

## UC Irvine

### UC Irvine Previously Published Works

**Title**

Nodular Sarcoidosis Masquerading as Cancer

**Permalink**

<https://escholarship.org/uc/item/7dx9h9rf>

**Authors**

Sweidan, Alexander J

Singh, Navneet K

Stein, Alexander

et al.

**Publication Date**

2017

**DOI**

10.1177/1179548417703123

Peer reviewed

# Nodular Sarcoidosis Masquerading as Cancer

Alexander J Sweidan<sup>1</sup>, Navneet K Singh<sup>1</sup>, Alexander Stein<sup>2</sup> and Maged Tanios<sup>2</sup>

<sup>1</sup>Department of Internal Medicine, University of California, Los Angeles and St. Mary Medical Center Long Beach, Long Beach, CA, USA. <sup>2</sup>Pulmonary and Critical Care Medicine, St. Mary Medical Center Long Beach, Long Beach, CA, USA.

Clinical Medicine Insights: Circulatory, Respiratory and Pulmonary Medicine  
Volume 11: 1–3  
© The Author(s) 2017  
Reprints and permissions:  
sagepub.co.uk/journalsPermissions.nav  
DOI: 10.1177/1179548417703123



**ABSTRACT:** Nodular lung disease is a rare pulmonary manifestation of sarcoidosis and resembles metastatic neoplasm disease. Nodular sarcoidosis is rare, varying from 1.6% to 4% of patients with sarcoidosis. Radiographic nodules measure from 1 to 5 cm in diameter that typically consist of coalescent granulomas. There is limited data on this form of sarcoidosis and its presentation can mimic primary or metastatic pulmonary neoplasms. Nodular sarcoidosis has a favorable prognosis, and resolution can be seen with oral corticosteroids. Herein, we present such a case of nodular pulmonary sarcoidosis with a lung nodule measured up to 6 cm.

**KEYWORDS:** Sarcoidosis, nodular sarcoidosis, noncaseating granuloma, hilar adenopathy, mediastinal adenopathy

**RECEIVED:** December 5, 2016. **ACCEPTED:** March 1, 2017.

**PEER REVIEW:** Five peer reviewers contributed to the peer review report. Reviewers' reports totaled 351 words, excluding any confidential comments to the academic editor.

**TYPE:** Case Report

**FUNDING:** The author(s) received no financial support for the research, authorship, and/or publication of this article.

**DECLARATION OF CONFLICTING INTERESTS:** The author(s) declared no potential conflicts of interest with respect to the research, authorship, and/or publication of this article.

**PREVIOUS PRESENTATION:** UCLA Solomon Scholar's Symposium: June, 2016.

**CORRESPONDING AUTHOR:** Maged Tanios, Pulmonary and Critical Care Medicine, St. Mary Medical Center, 1050 Linden Ave., Long Beach, CA 90813, USA. Email: mtanios@yahoo.com

## Introduction

Lung masses are usually suspected to represent a malignant process, especially if larger in size than 3 cm. Clinicians rely on radiologic characteristics of the mass to direct their diagnostic approach.<sup>1–3</sup> Positron emission tomography (PET) or integrated computed tomography and PET (PET/CT), when available, is often considered in the evaluation of lung nodules and masses. The positive predictive value of a positive PET scan exceeds 80%.<sup>4</sup> However, a positive PET scan can also be associated with inflammatory masses or pulmonary sarcoidosis.<sup>5,6</sup> The most common initial presentations of pulmonary sarcoidosis in adults are bilateral hilar adenopathy or reticulo-nodular opacities. Although the initial presentation of sarcoidosis as lung nodules is not uncommon, it rarely presents as large lung mass. We report a case of pulmonary sarcoidosis presenting with initial presentation as a lung mass.

## Case Report

A 39-year-old African-American woman with a history of ulcerative colitis and tobacco abuse was referred for pulmonary consultation for atypical chest pain and abnormal chest x-ray (CXR). Her symptoms started 3 months prior to the presentation and her review of systems was unrevealing except for a decrease in appetite but without weight loss. Her physical examination was essentially normal and she had no lymphadenopathy or skin lesions. Initial CXR (Figure 1) found bilateral hilar adenopathy. Therefore, a chest CT scan was done which found a concerning mass. Therefore, a PET/CT scan of the chest was done and found mediastinal and hilar lymphadenopathy (Figure 2) and a right lower lobe lung mass (Figure 3) measured 4 cm × 3 cm mass all with significant fluorodeoxyglucose uptake.



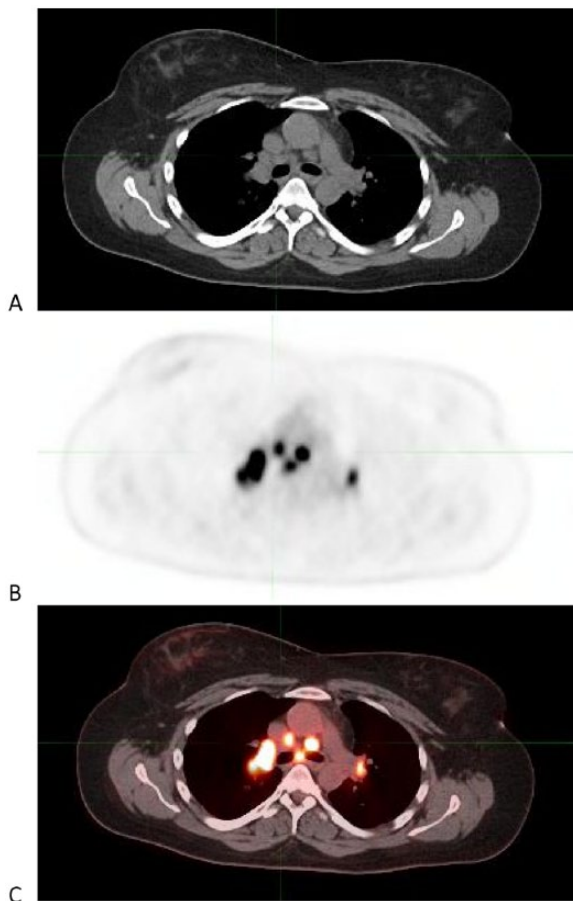
**Figure 1.** Portable chest x-ray. Bilateral hilar adenopathy.

Pulmonary function testing was performed and interpreted as follows: no defects, normal diffusion, and minimal air trapping. A CT-guided biopsy of the mass was consistent with nodular, noncaseous granulomas with background fibrous histiocytic infiltration and chronic inflammatory cells in the right lower lung. Based on these findings, the patient underwent video-assisted thoracoscopic surgery that revealed noncaseating granulomas consistent with sarcoidosis. Acid-fast bacilli stain, fungal, and tissue cultures were negative. A bronchoalveolar lavage was not performed. A diagnosis of sarcoidosis was made based on pathologic and radiologic evidence. The patient's symptoms resolved spontaneously without systemic glucocorticoids.

## Discussion

Sarcoidosis is uncommon with an unknown etiology. In North America, the incidence of sarcoidosis is highest among black

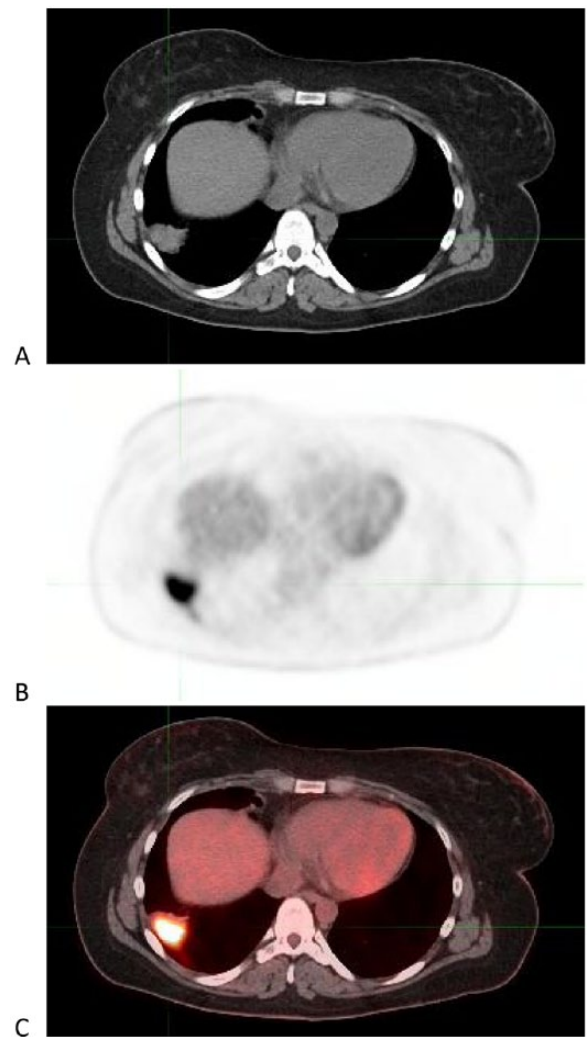




**Figure 2.** Positron emission tomography with computed tomographic (PET/CT) scan of mediastinal and hilar lung region. (A) Chest CT exhibiting mediastinal and hilar lymphadenopathy, (B) PET scan exhibiting uptake in mediastinal and hilar lymph nodes, and (C) fusion scan exhibiting uptake in mediastinal and hilar lymph nodes.

women, whereas in Europe, it is highest among white women. Age of onset is between 30 and 45 years of age.<sup>7</sup> Typically, the diagnosis is straightforward based on pathognomonic signs and symptoms. But an atypical presentation often beguiles the medical community and can lead to misdiagnosis. Herein, we present an atypical case of sarcoidosis as a lung mass with no extrapulmonary manifestations.

Diagnosis of sarcoidosis requires 3 elements: (a) radiographic and clinical findings consistent with sarcoidosis, (b) exclusion of diseases that present similarly, and (c) biopsy of the most accessible lesion, demonstrating noncaseating granulomas on histopathology.<sup>8</sup> Sarcoidosis can present with atypical findings on chest radiography and CT scanning of nodules (<3 cm) or masses (>3 cm) that resemble primary or metastatic cancer.<sup>9</sup> Radiographic nodules measure from 1 to 5 cm in diameter that typically consist of coalescent granulomas.<sup>10</sup> These nodules usually tend to be peripheral. Imaging also can consist of bilateral hilar and mediastinal nodal enlargement, which is frequently seen in approximately 75% of the patients.<sup>11</sup> Despite these criteria, sarcoidosis is an everlasting diagnostic challenge.



**Figure 3.** Positron emission tomography with computed tomographic (PET/CT) scan of lower lung fields. (A) Chest CT exhibiting a large right pleural density measured to be 4 cm × 3 cm, (B) PET scan exhibiting uptake in a large right pleural density, and (C) fusion scan exhibiting uptake in a large right pleural density.

Nodular sarcoidosis is an uncommon form of sarcoidosis and is prevalent in 2.4% to 4% of cases.<sup>12</sup> The first case of nodular sarcoidosis was reported by McCord and Hyman in 1952 with multiple bilateral nodules imitating metastatic disease.<sup>13</sup> Most of the patients with nodular sarcoidosis are African-American women between 20 and 40 years of age.<sup>14</sup>

The spontaneous resolution of the disease is common; however, up to 10% of the patients can progress to respiratory impairment and organ failure. There are no established criteria to determine the indications of treatment. The treatment is based on severity of symptoms, evidence of impairment in lung function, and disease with extensive fibrosis and bullae formation.<sup>15</sup> Oral glucocorticoids are the most commonly used medication in the treatment of sarcoidosis. Other alternative therapies such as immunosuppressive and cytotoxic agents have been suggested, but there is limited evidence regarding

efficacy of these agents. Nodular sarcoidosis presenting as lung mass is exceedingly rare. Most of the identified patients are women and smokers. These solitary masses are believed to be a coalescence of smaller nodules and prove to be even more misleading and suggestive of a primary cancer. Patients with nodular sarcoidosis have a favorable prognosis with significant improvement in radiographic findings with systemic corticosteroids.<sup>16</sup>

### Author Contributions

AJS, NKS, AS, and MT contributed substantially to the authorship of this case report. AS and MT were directly involved in the patient's care.

### REFERENCES

1. Tanner NT, Aggarwal J, Gould MK, et al. Management of pulmonary nodules by community pulmonologists: a multicenter observational study. *Chest*. 2015;148:1405–1414. doi:10.1378/chest.15-0630.
2. Gould MK, Tang T, Liu IL, et al. Recent trends in the identification of incidental pulmonary nodules. *Am J Respir Crit Care Med*. 2015;192:1208–1214. doi:10.1164/rccm.201505-0990OC.
3. Ost D, Fein AM, Feinsilver SH. Clinical practice. The solitary pulmonary nodule. *N Engl J Med*. 2003;348:2535–2542.
4. Bar-Shalom R, Kagna O, Israel O, Guralnik L. Noninvasive diagnosis of solitary pulmonary lesions in cancer patients based on 2-fluoro-2-deoxy-D-glucose avidity on positron emission tomography/computed tomography. *Cancer*. 2008;113:3213–3221. doi:10.1002/cncr.23928.
5. Gould MK, Maclean CC, Kuschner WG, Rydzak CE, Owens DK. Accuracy of positron emission tomography for diagnosis of pulmonary nodules and mass lesions: a meta-analysis. *JAMA*. 2001;285:914–924.
6. Chun EJ, Lee HJ, Kang WJ, et al. Differentiation between malignancy and inflammation in pulmonary ground-glass nodules: the feasibility of integrated (18)F-FDG PET/CT. *Lung Cancer*. 2009;65:180–186. doi:10.1016/j.lungcan.2008.11.015.
7. Hamzeh N. Sarcoidosis. *Med Clin N Am*. 2011;95:1223–1234. doi:10.1016/j.mcna.2011.08.004.
8. Hunninghake GW, Costabel U, Ando M, et al. Statement on sarcoidosis. Joint statement of the American Thoracic Society (ATS), the European Respiratory Society (ERS) and the World Association of Sarcoidosis and Other Granulomatous Disorders (WASOG) adopted by the ATS Board of Directors and by the ERS Executive Committee, February 1999. *Am J Respir Crit Care Med*. 1999;160:736–755.
9. Kwar E, Saraf SY, Braman SS, Healey TT. Nodular pulmonary sarcoidosis. *Med Health R I*. 2012;95:139–140.
10. Ma Y, Gal A, Koss MN. The pathology of pulmonary sarcoidosis: update. *Semin Diagn Pathol*. 2007;24:150–161.
11. Naidich DP, Srichai MB, Krinsky GA. *Computed Tomography and Magnetic Resonance of the Thorax*. Lippincott Williams & Wilkins; 2007.
12. Malaisamy S, Dalal B, Bimenyuy C, Soubani A. The clinical and radiologic features of nodular pulmonary sarcoidosis. *Lung*. 2008;187:9–15. doi:10.1007/s00408-008-9118-2.
13. Nakamura H, Kashiwabara K, Watanabe T, Yagyu H, Kiguchi T, Matsuoka K. Sarcoidosis with multiple nodular shadows in bilateral lung fields. *Intern Med*. 1995;34:1144–1145. doi:10.2169/internalmedicine.34.1144.
14. Shahzad H, Ur-Rehman S, Fatima K, Sharif N, Zubairi A. Case series and literature review of multiple nodular sarcoidosis. *BMC Res Notes*. 2013;6:394. doi:10.1186/1756-0500-6-394.
15. Sharma OP. Pulmonary sarcoidosis and corticosteroids. *Am Rev Respir Dis*. 1993;147:1598–1600.
16. Romer FK. Sarcoidosis with large nodular lesions simulating pulmonary metastases. An analysis of 126 cases of intrathoracic sarcoidosis. *Scand J Respir Dis*. 1977;58:11–16.