

# UCSF

## UC San Francisco Previously Published Works

### Title

SEC14 and Spectrin Domains 1 (Sestd1), Dishevelled 2 (Dvl2) and Dapper Antagonist of Catenin-1 (Dact1) co-regulate the Wnt/Planar Cell Polarity (PCP) pathway during mammalian development

### Permalink

<https://escholarship.org/uc/item/7f73w50t>

### Journal

Communicative & Integrative Biology, 6(6)

### ISSN

1942-0889

### Authors

Yang, XiaoYong  
Fisher, Daniel A  
Cheyette, Benjamin NR

### Publication Date

2013-11-09

### DOI

10.4161/cib.26834

Peer reviewed

# SEC14 and Spectrin Domains 1 (Sestd1), Dishevelled 2 (Dvl2) and Dapper Antagonist of Catenin-1 (Dact1) co-regulate the Wnt/Planar Cell Polarity (PCP) pathway during mammalian development

XiaoYong Yang, Daniel A Fisher, and Benjamin NR Cheyette\*

The Nina Ireland Laboratory of Developmental Neurobiology; Department of Psychiatry; University of California San Francisco; San Francisco, CA USA

**Keywords:** Sestd1, Dvl2, Dact1, Rho GTPase, Vangl2, planar cell polarity

**Abbreviations:** CE, convergent-extension cell movements; co-IP, co-immunoprecipitation; Dact1, Dapper Antagonist of Catenin 1; Dvl2, Dishevelled 2; KO, genetically engineered knock-out; PCP, planar cell polarity; Sestd1, SEC14 and Spectrin Domains 1; Vangl2, Van Gogh-like 2

We previously reported that *Sestd1* KO phenocopies *Dact1* KO in mice, consistent with a model in which Sestd1 and Dact1 form a crucial functional complex that regulates Vangl2 in the Wnt/Planar Cell Polarity (PCP) pathway. Here, we show that Dvl2, a binding partner of Dact1, also forms complexes with Sestd1, and does so independently of both Dact1 and Vangl2. In cell-based assays, whereas Sestd1 does not alter Dvl2 activation of the Wnt/ $\beta$ -catenin signaling pathway, Dvl2 enhances activation of Rho family GTPases by Dact1 and Sestd1, consistent with a role in the PCP pathway. In mice, although *Dvl2* KO is recessive in an otherwise wild type background, it leads to dominant embryonic lethality in either the *Sestd1* or *Dact1* KO background. This genetic synergy stands in contrast to the epistasis we have previously reported between *Sestd1* and *Dact1* KO, and suggests independent or semi-independent functions for Dvl2 vs. Sestd1/Dact1 in the regulation of the PCP pathway during development. In conclusion, biochemical and genetic interactions between Dvl2, Sestd1, and Dact1, in addition to prior reported interactions between these same molecules and Vangl2, suggest that all these gene products can form complexes together and regulate the PCP pathway during mammalian development. However, Sestd1 and Dact1 have a closely allied function in the post-translational regulation of Vangl2 that is at least partially distinct from the functions of Dvl2 in this pathway.

## Introduction

The Planar Cell Polarity (PCP) pathway is a major form of  $\beta$ -catenin-independent signaling that can occur in cells downstream of extracellular Wnt ligands and/or other intercellular interactions including between Wnt co-receptors and Van Gogh like (Vangl) 4-pass transmembrane proteins.<sup>1,2</sup> The PCP pathway contributes to cell polarity and to polarized cell movements during development; one key developmental process to which it contributes in vertebrates is convergent-extension (CE) movement of cells in the primary germ layers and their immediate tissue derivatives that lengthen and narrow the embryo and close the neural tube. Although much remains to be elucidated mechanistically, it has been established that the PCP pathway coordinately regulates the subcellular localization of several transmembrane and

associated intracellular proteins, and stimulates cytoskeletal rearrangements and presumably changes in cell adhesion that facilitate and promote this class of morphogenetic movements. Among several downstream PCP pathway effectors are the Rho family of small GTPases (comprised of the Rho, Rac, and Cdc42 subfamilies), whose activity serves to mobilize actin and other cytoskeletal components.<sup>1,3,4</sup> The PCP pathway contrasts with the “canonical”  $\beta$ -catenin-dependent Wnt pathway (Wnt/ $\beta$ -catenin signaling), whose primary cell biological target is the transcriptional regulation of genes to alter cell proliferation and cell fate.<sup>5</sup>

Dishevelled (Dvl), a scaffold protein with 3 conserved motifs (DIX, PDZ, and DEP), is involved in virtually all described types of Wnt signaling.<sup>6-9</sup> There are 3 Dvl loci (*Dvl1*, 2, and 3) in the genomes of mice and humans, each with widespread and

\*Correspondence to: Ben Cheyette; Email: bc@ucsf.edu

Submitted: 08/19/2013; Revised: 10/15/2013; Accepted: 10/16/2013

Citation: Yang X, Fisher DA, Cheyette BN. SEC14 and Spectrin Domains 1 (Sestd1), Dishevelled 2 (Dvl2) and Dapper Antagonist of Catenin-1 (Dact1) co-regulate the Wnt/Planar Cell Polarity (PCP) pathway during mammalian development. *Communicative & Integrative Biology* 2013; 6:e26834; <http://dx.doi.org/10.4161/cib.26834>

**Table 1.** Loss of the *Dvl2* gene leads to dominant embryonic lethality in a *Sestd1* null background

Genotype	<i>Sestd1</i> <sup>-/+</sup> <i>Dvl2</i> <sup>+/-</sup>	<i>Sestd1</i> <sup>-/+</sup>	<i>Dvl2</i> <sup>+/-</sup>	<i>Sestd1</i> <sup>-/+</sup> <i>Dvl2</i> <sup>-/-</sup>	<i>Sestd1</i> <sup>-/-</sup> <i>Dvl2</i> <sup>+/-</sup>	<i>Sestd1</i> <sup>-/-</sup>	<i>Dvl2</i> <sup>-/-</sup>	WT	<i>Sestd1</i> <sup>-/-</sup> <i>Dvl2</i> <sup>-/-</sup>
<b>Neonatal Phenotype</b>	Normal	Normal	Normal	Normal	embryonic lethality	Short tail No genital tubercle	Normal	Normal	embryonic lethality
<b>Neonates Observed</b>	13	6	7	4	0	4	2	2	0
<b>Neonates Expected</b>	9.5	4.75	4.75	4.75	4.75	2.375	2.375	2.375	2.375
<b>Predicted Mendelian Ratio</b>	1/4	1/8	1/8	1/8	1/8	1/16	1/16	1/16	1/16

*Sestd1*<sup>+/-</sup>; *Dvl2*<sup>+/-</sup> X *Sestd1*<sup>-/-</sup>; *Dvl2*<sup>+/-</sup> (total = 38)

highly overlapping expression patterns during development and in the adult.<sup>10-12</sup> Genetically engineered *Dvl1* knockout (KO) mice develop grossly normally but display defects in communal and maternal behavior.<sup>13</sup> In contrast, *Dvl2* KO mice have complex birth defects that include cardiac, skeletal, and neural tube defects reflective of PCP pathway disruption during development.<sup>14</sup> Genetic combination of the *Dvl1* and *Dvl2* KO in mice leads to more severe neural tube defects than the *Dvl2* KO alone,<sup>15</sup> suggesting partially redundant functions of these Dvl proteins in the PCP pathway. Mice and humans also have 3 *Dact* (Dapper Antagonist of Catenin, also known simply as “Dapper” or “Frodo”) loci (*Dact1*, 2, and 3), which encode Dvl-interacting regulators of Wnt signaling.<sup>16-21</sup> *Dact1* KO mice usually die within a day of birth from a spectrum of posterior malformations, including neural tube defects, reflecting abnormalities in the PCP pathway during embryonic development.<sup>22,23</sup> Biochemical analyses support that the PCP pathway is disrupted in developing tissues of *Dact1* KO animals. Moreover, the levels and localization of some components of the PCP pathway, notably the Vangl2 transmembrane protein, are misregulated in affected tissues of *Dact1* KO embryos.<sup>22</sup>

We recently identified SEC14 and spectrin domains 1 (*Sestd1*) as a *Dact1* binding partner. Remarkably, *Sestd1* KO mice display a phenotypic spectrum identical to *Dact1* KO mice.<sup>24</sup> Biochemical studies show that loss of *Sestd1*, like loss of *Dact1*, leads to disruption of cellular PCP pathway readouts. Based on this and other

evidence, we concluded that in developing tissues where they are required, *Sestd1* and *Dact1* form a complex that regulates Vangl2 post-translational stability and/or trafficking and the PCP pathway.<sup>24</sup> Given that *Dact1* can bind *Dvl2* that has been implicated separately in the same pathway and in overlapping developmental events,<sup>14</sup> we speculated that *Sestd1* and *Dvl2* might also be partners during embryogenesis. Here we provide biochemical and genetic evidence that supports complex formation and functional interactions among the *Sestd1*, *Dact1*, and *Dvl2* proteins, while also demonstrating that there are likely to be important differences in the roles these proteins play in the PCP pathway and in post-translational Vangl2 regulation.

## Results

### *Dvl2* can form a complex with *Sestd1* independently of *Dact1* and Vangl2

To test the hypothesis that *Sestd1* can form a complex with Dvl proteins, murine *Sestd1* was recombinantly coexpressed in an immortalized human cell line with one of the murine Dvl paralogs, *Dvl2*. Co-immunoprecipitation (co-IP) assays demonstrated that the full-length *Sestd1* and *Dvl2* proteins form complexes when expressed in this manner (Fig. 1A, lane 1 vs. control lane 2). However, as *Dact* proteins are shared binding partners of both *Dvl2* and *Sestd1*,<sup>24,25</sup> it remained possible that the *Sestd1*-*Dvl2* complex formation observed in these cells might occur indirectly

**Table 2.** Loss of the *Dvl2* gene leads to dominant embryonic lethality in a *Dact1* null background

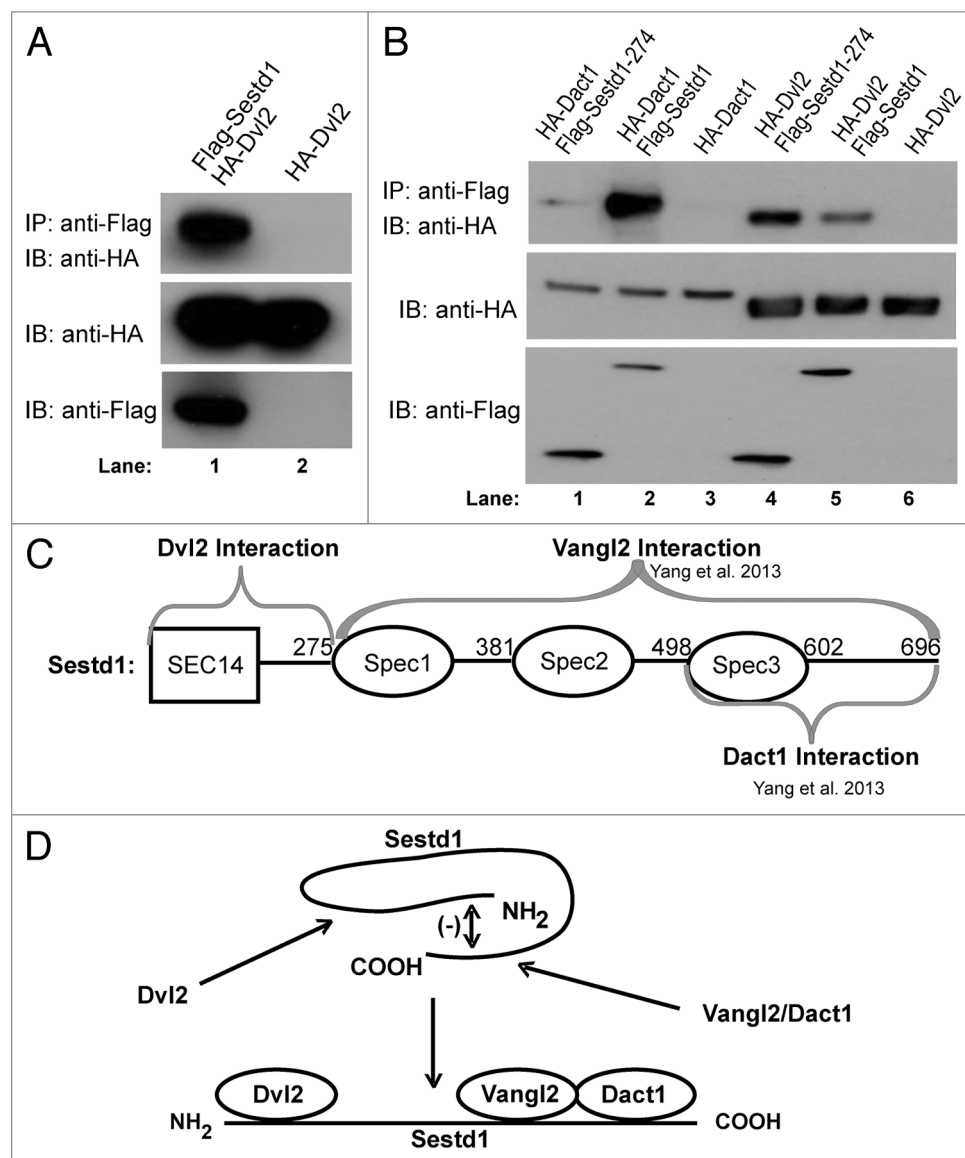
Genotype	<i>Dact1</i> <sup>+/-</sup> <i>Dvl2</i> <sup>+/-</sup>	<i>Dact1</i> <sup>+/-</sup>	<i>Dvl2</i> <sup>+/-</sup>	<i>Dact1</i> <sup>+/-</sup> <i>Dvl2</i> <sup>-/-</sup>	<i>Dact1</i> <sup>-/-</sup> <i>Dvl2</i> <sup>+/-</sup>	<i>Dact1</i> <sup>-/-</sup>	<i>Dvl2</i> <sup>-/-</sup>	WT	<i>Dact1</i> <sup>-/-</sup> <i>Dvl2</i> <sup>-/-</sup>
<b>Neonatal Phenotype</b>	Normal	Normal	Normal	Normal	Short tail No genital tubercle	Short tail No genital tubercle	Normal	Normal	Embryonic lethality
<b>Neonates Observed</b>	14	8	13	9	4	3	7	2	0
<b>Neonates Expected</b>	15	7.5	7.5	7.5	7.5	3.75	3.75	3.75	3.75
<b>Predicted Mendelian Ratio</b>	1/4	1/8	1/8	1/8	1/8	1/16	1/16	1/16	1/16

*Dact1*<sup>+/-</sup>; *Dvl2*<sup>+/-</sup> X *Dact1*<sup>-/-</sup>; *Dvl2*<sup>+/-</sup> (total = 60)

via mutual binding to endogenous Dact proteins. To eliminate this possibility, a murine Sestd1 deletion mutant (Sestd1 (1–274)), which does not interact with Dact proteins,<sup>24</sup> was recombinantly coexpressed with either Dvl2 or Dact1 (as a negative control) in the same cell line and co-IP assays performed. In confirmation of our previously published finding,<sup>24</sup> this portion of Sestd1, comprised of the SEC14-homology region and other N-terminal sequence, is stably expressed in these cells but does not form a complex above background immunoprecipitation levels with full-length Dact1 (Fig. 1B, lane 1 vs. lanes 2 and 3); nevertheless, this same N-terminal region of Sestd1 does form a complex with Dvl2 (Fig. 1B, lane 4). In fact, this region of Sestd1 associates with Dvl2 more robustly than the full-length Sestd1 protein (Fig. 1B, lane 4 vs. lane 5), suggesting that the C-terminal region of Sestd1 including the spectrin repeats, which is necessary and sufficient for association with Dact1 and Vangl2,<sup>24</sup> *inhibits* association with Dvl2. This is intriguing given that the converse is true with regard to Sestd1 complex formation with Vangl2: We previously reported that the N-terminal region of Sestd1, which we show here associates with Dvl2, *inhibits* association with Vangl2.<sup>24</sup> To summarize, the co-IP data suggest that Sestd1 can associate with Dvl2 independently of the Sestd1-Dact1 interaction and of the Sestd1-Vangl2 interaction (Fig. 1C), and further suggest the possibility of mutual regulatory interactions between these halves of the Sestd1 protein in scaffold formation (Fig. 1D).

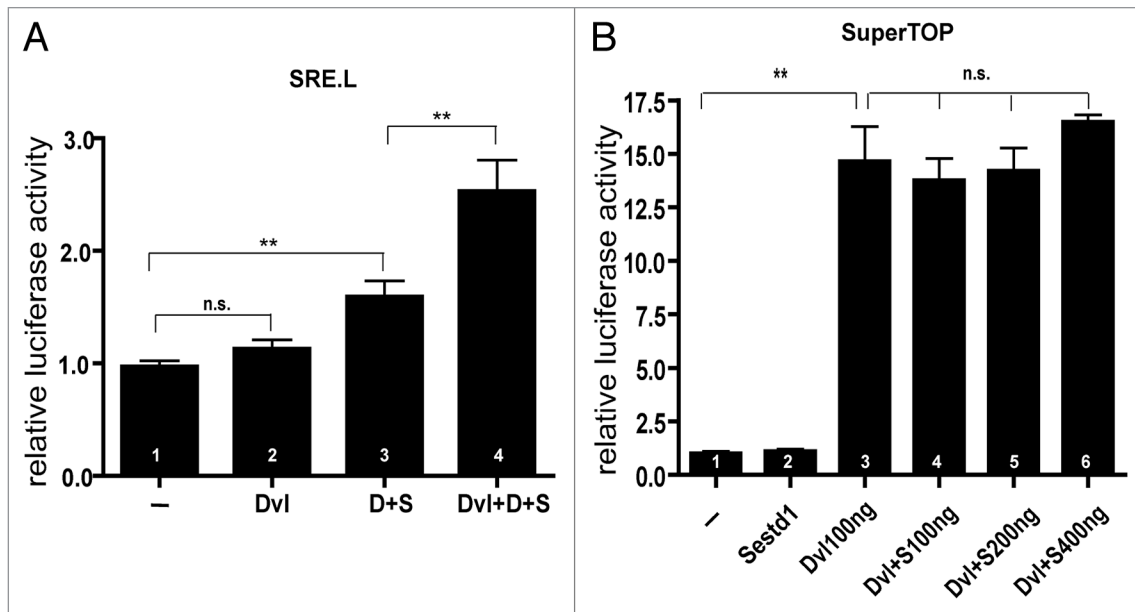
#### Dvl2 cooperates with Dact1 and Sestd1 in activating Rho GTPase activity

Genetic and biochemical evidence strongly suggests that Sestd1 and Dact1 act together in the PCP pathway during mouse development.<sup>22,24</sup> Dvl2 is a key regulator of the PCP pathway and is a binding partner of both Sestd1 and Dact1.<sup>15,20,24</sup> On this basis we reasoned that Dvl2 might affect the ability of a Sestd1-Dact1 complex to activate Rho GTPases, downstream effectors of the PCP pathway.<sup>22,24</sup> To measure this, we employed SRE.L,<sup>26</sup> a plasmid-based luciferase reporter containing the Serum Response Element



**Figure 1.** Dvl2 forms a complex with Sestd1 independent of Dact1 or Vangl2. (A) Sestd1 interacts with Dvl2 in a human cell line. Flag-Sestd1 was expressed with or without HA-Dvl2, protein complexes immunoprecipitated (IP) with anti-FLAG agarose beads, and associated proteins detected by immunoblot (IB) with anti-HA antibody. (B) The interaction between Sestd1 and Dvl2 is independent of Dact1. Flag-Sestd1 or Flag-Sestd1 (1–274) was expressed with or without HA-Dact1 or HA-Dvl2, and co-IP assays performed as in A. (C) Schematic summary of complex formation between Sestd1 and Dvl2. Interacting regions are indicated by gray braces. (D) Schematic diagram of regulatory interactions between the N-terminal and C-terminal halves of the Sestd1 protein inferred from co-IP data with Dvl2, Dact1, and Vangl2.

upstream of the luciferase cDNA, using conditions in an immortalized mammalian cell line that we have previously validated as a read-out of Rho GTPase activity.<sup>24</sup> Although expression of Dvl2 alone had no effect on Rho GTPase activity based on this reporter (Fig. 2A, bar 2 vs. bar 1: Dvl2: 1.13 ± 0.078 vs. SRE: 0.97 ± 0.05,  $P = 0.1054$ ), expression of Dvl2 significantly increased activity elicited in the presence of both Dact1 and Sestd1 (Fig. 2A, bar 4 vs. bar 3: Dvl2 + Dact1 + Sestd1: 2.53 ± 0.28 vs. Dact1 + Sestd1: 1.59 ± 0.14,  $P = 0.0086$ ). These data suggest that Dvl2 can synergize with the Sestd1-Dact1 complex in Rho GTPase activation.



**Figure 2.** Dvl2 cooperates with Dact1 and Sestd1 in stimulating cellular Rho GTPase activity. (A) Dvl2, Sestd1 and Dact1 synergistically elevate Rho GTPase activity. The SRE.L reporter and Renilla plasmids were co-transfected into cells alone (-) or with Dvl2, Dact1-2A-Sestd1 (D+S) or both plasmids, and luciferase activity measured 24 h later. The graph represents relative luciferase activity, calculated as the ratio of the firefly to Renilla luciferase activity (mean  $\pm$  SEM [n = 4]). (B) Dvl2 does not synergize with Sestd1 in Wnt/ $\beta$ -catenin-dependent luciferase reporter assay. The SuperTOP flash reporter and Renilla plasmids were co-transfected into cells alone (-) or with Sestd1, Dvl2, or both, and luciferase activity measured 24 h post-transfection. n.s., not significant ( $P > 0.05$ ); \*\*,  $P < 0.01$ .

In addition to its activity in the PCP pathway, Dvl2 can also regulate the Wnt/ $\beta$ -catenin signaling pathway. Unlike Dact1, which when recombinantly expressed can antagonize Wnt/ $\beta$ -catenin signaling by inducing degradation of co-expressed Dvl2,<sup>25,27</sup> Sestd1 does not induce degradation of co-expressed Dvl2 in cells (Fig. 1B, lane 5 vs. 6 anti-HA blot). It has also been demonstrated that a Dact1 paralog can synergize with a co-expressed Dvl protein to activate the Wnt/ $\beta$ -catenin signal pathway under some conditions.<sup>21</sup> To test whether Sestd1 can similarly potentiate or otherwise affect Dvl2-mediated Wnt/ $\beta$ -catenin signal pathway activation, we employed an assay in an immortalized mammalian cell line based on a plasmid-based reporter (SuperTOP) containing multiple T-cell factor binding sites upstream of the luciferase cDNA.<sup>28,29</sup> As expected from previous studies,<sup>27</sup> recombinant expression of Dvl2 significantly activated the Wnt/ $\beta$ -catenin signaling pathway as measured by this assay (Fig. 2B, bar 3 vs. bar 1: Dvl2:  $14.64 \pm 1.63$  vs. SuperTOP only (-):  $1.0 \pm 0.10$ ,  $P < 0.0001$ ). However, recombinant expression of Sestd1 did not activate this reporter by itself (Fig. 2B, bar 2 vs. bar 1: Sestd1:  $1.1 \pm 0.09$  vs. SuperTOP only (-):  $1.0 \pm 0.10$ ,  $P = 0.47$ ), nor did it affect activation of this reporter by Dvl2 (100ng) regardless of Sestd1 dose (Fig. 2B, bars 4, 5, 6 each compared vs. bar 3: Dvl2+Sestd1 100ng,  $13.76 \pm 1.01$ ,  $P = 0.66$ ; Dvl2+Sestd1 200ng,  $14.20 \pm 1.07$ ,  $P = 0.83$ ; Dvl2+Sestd1 400ng,  $16.49 \pm 0.34$ ,  $P = 0.31$ ; each compared vs. Dvl2 only,  $14.64 \pm 1.63$ ). Together, the signaling reporter data suggest that Sestd1 functionally interacts with Dvl2 in the PCP, but not the Wnt/ $\beta$ -catenin, pathway.

**Sestd1 and Dact1 KO display similar synergistic genetic interactions with Dvl2 KO in mice**

Mutation of PCP pathway components, including Dact1, Sestd1, and Dvl2, lead to a CE deficit during embryonic axis elongation and to neural tube defects.<sup>14,22,24</sup> Biochemical interactions between the Dvl2 and Sestd1 proteins suggest that mutations at the corresponding loci may genetically interact in functionally revealing ways. To test this hypothesis, an intercross was made between *Sestd1*<sup>-/-</sup>; *Dvl2*<sup>-/-</sup> mice, and neonatal offspring genotyped and phenotyped (Table 1). Although *Dvl2* is recessive (*i.e.*, *Dvl2* heterozygotes are viable and phenotypically wild type), and although mice that are null for either *Dvl2* or *Sestd1* can survive to birth, *Sestd1*<sup>-/-</sup>; *Dvl2*<sup>-/-</sup> (*Sestd1* null in a *Dvl2* heterozygous background) and *Sestd1*<sup>-/-</sup>; *Dvl2*<sup>-/-</sup> (*Sestd1* null in a *Dvl2* null background) neonates are never observed. This indicates that loss of *Sestd1* combined with loss of either one or both copies of *Dvl2* leads to embryonic lethality. This is similar to data we obtained by intercrossing *Dact1*<sup>-/-</sup>; *Dvl2*<sup>-/-</sup> mice. Here again, although mice that are null for either *Dvl2* or *Dact1* can survive to birth, and although *Dvl2* is recessive, *Dact1*<sup>-/-</sup>; *Dvl2*<sup>-/-</sup> (*Dact1* null in a *Dvl2* heterozygous background) neonates are reduced in number by half, and *Dact1*<sup>-/-</sup>; *Dvl2*<sup>-/-</sup> (*Dact1* null in a *Dvl2* null background) neonates are never observed, indicating that simultaneous loss of Dact1 and Dvl2 leads to embryonic lethality (Table 2).

## Discussion

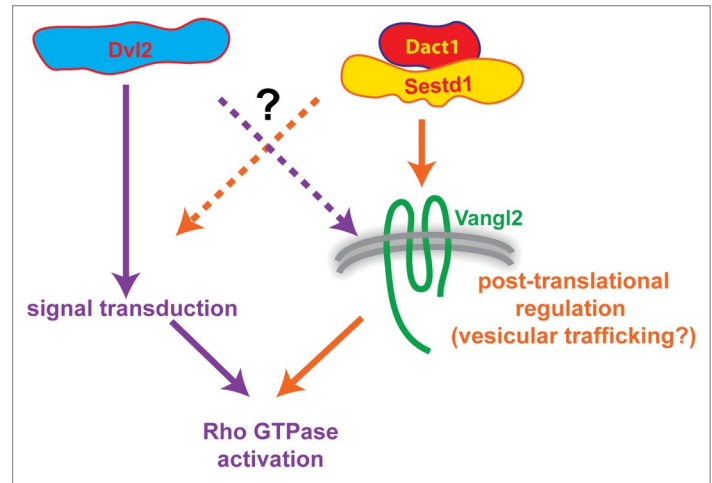
We have shown here that Dvl2 forms complexes with Sestd1 independently of interactions with Dact1 and Vangl2. We have also shown in cells that recombinantly expressed Dvl2 can stimulate Rho GTPase activity cooperatively with Dact1 and Sestd1,



consistent with these proteins all contributing to the PCP pathway. Our genetic data in mice, demonstrating synergistic (phenotypically super-additive) developmental interactions between KO mutations at the *Dvl2* and *Sestd1* loci as well as between KO mutations at the *Dvl2* and *Dact1* loci, similarly suggest that the Dvl2, Sestd1, and Dact1 proteins functionally converge on a key developmental process (i.e., PCP) in the embryo—but indicate that Dvl2 also contributes in some fashion that is not entirely dependent on either Dact1 or Sestd1. This contrasts with the completely epistatic genetic relationship between mutations in *Dact1* and *Sestd1*: KO of both of these loci together leads to precisely the same phenotype as KO of either locus by itself,<sup>24</sup> indicating that the Dact1 and Sestd1 proteins act in a single (linear) biochemical pathway such that a loss of either protein alone has the same functional consequence as loss of both proteins together. Further supporting such a model, the *Dvl2*, *Dact1*, and *Sestd1* loci substantially differ in their genetic interactions with the *Vangl2* locus in mice: *Dvl2* mutations synergize with,<sup>15</sup> whereas *Dact1* and *Sestd1* mutations rescue, *Vangl2* mutations.<sup>22,24</sup>

Several lines of evidence suggest that all 3 of these scaffold proteins—Dact1, Sestd1, and Vangl2—participate in the trafficking of Vangl2. Sestd1 has a SEC14 domain that by homology implicates this protein in lipid signaling and membrane trafficking.<sup>30,31</sup> In previous work, we have linked the unique *Dact1* and *Sestd1* KO phenotypic spectrum and genetic interactions to increased Vangl2 protein levels at the plasma membrane in the affected tissue of mutant embryos.<sup>22</sup> Conversely, *Vangl2* missense mutations that reduce Vangl2 protein at the plasma membrane also interfere with the ability of the corresponding Vangl2 mutant proteins to form complexes with Dvl proteins.<sup>32,33</sup> Supporting a link between Dact, Dvl, and protein trafficking or turnover, loss of individual Dact family members has been reported to increase Dvl protein levels in some models,<sup>23,27</sup> whereas recombinantly overexpressed Dact family members reproducibly reduce Dvl protein levels in many cell lines.<sup>25,27</sup> Finally, both Dvl and Dact family members display a punctate intracellular distribution,<sup>20,27,34,35</sup> and although controversial,<sup>25,36</sup> in both cases these puncta have been equated with a membrane-bound compartment in some studies.<sup>37,38</sup>

In sum, genetic, developmental, cell biological, and biochemical data suggest a model in which Dvl2, Dact1, and Sestd1 all contribute to the PCP pathway during embryonic development—but that Dact1 and Sestd1 have a relatively unique functional alliance in Vangl2 trafficking that is not wholly shared by Dvl2, whereas Dvl2 participates in another aspect of PCP pathway signal transduction that is not entirely dependent on either Dact1 or Sestd1 (Fig. 3). This model, clearly incomplete in its details, is nonetheless useful in that it highlights gaps in our understanding and questions that remain: Does a Dact1/Sestd1 complex participate primarily in the biochemical regulation of Vangl2 stability, in Vangl2 endocytosis and associated degradation or recycling, or in Vangl2 trafficking from the Golgi to the plasma membrane? Does Dvl2 participate in the same Dact1/Sestd1 complex or in some separate aspect of Vangl2 cell biology? How might scaffolding interactions between these proteins relate mechanistically to



**Figure 3.** Working model of inferred PCP pathway relationships and cell biological functions to be explored through further experimentation. Although Dvl2 can form a complex with Sestd1 and Dact1 as well as with Vangl2, genetic and other evidence suggest that Dact1 and Sestd1 work closely together in Vangl2 trafficking (right side, orange arrows), whereas Dvl2 makes at least partially independent contributions to signal transduction (left side, purple arrows). Both sets of proteins may nevertheless contribute to both processes (dashed arrows), which may indeed be functionally intertwined.

these and other steps in the PCP pathway, including activation of downstream effectors such as Rho GTPases? These and other questions can be addressed through further experiments making use of existing KO mouse lines and novel transgenic models, combined with state-of-the-art cell biological, developmental, signaling, and molecular imaging techniques.

## Methods

### Immunoprecipitation

A human embryonic kidney (HEK293T) cell line was transfected with HA-Dvl2 or HA-Dact1 expressing plasmid either with or without Flag-Sestd1 or Flag-Sestd1 (1–274) expressing plasmid using Lipofectamine 2000 (Life Technologies). After 48 h, transfected cells were lysed, pre-cleared, and incubated with anti-FLAG M2 beads for 3 h. Beads were collected and washed as described previously.<sup>25</sup> Protein complexes were separated by SDS-PAGE followed by detection using anti-HA antibody.

### Luciferase reporter activity assays

To measure Rho family GTPase activity, an immortalized mouse fibroblast (NIH3T3) cell line was transfected in triplicate with the SRE.Luciferase reporter plasmid, a Renilla plasmid, and either empty vector, HA-Dvl2, FlagDact1–2A-HASestd1,<sup>24</sup> or the HA-Dvl2 and FlagDact1–2A-HASestd1 plasmids together, using Lipofectamine 2000 (Life Technologies). In previous work, we showed that stimulation of this reporter by Dact1 + Sestd1 in low serum conditions is blocked by co-expression of the C3 ADP ribosyltransferase, indicating that it reflects activation of the Rho subfamily of small GTPases.<sup>24,39</sup> To measure Wnt/ $\beta$ -catenin signaling activity, HEK293T cells were transfected in triplicate with the SuperTOPflash reporter plasmid, a Renilla plasmid, and

either empty vector, Flag-Sestd1, HA-Dvl2 or the Flag-Sestd1 and HA-Dvl2 plasmids together, using Lipofectamine 2000 (Life Technologies). One day after transfection, luciferase activity was measured by a luminometer (Veritas) as previously described.<sup>24,40</sup>

### Statistical analyses

Prism software (GraphPad) was used for all data analysis; *P* values were calculated by unpaired, parametric, 2-tailed *t* test.

### Disclosure of Potential Conflicts of Interest

No potential conflicts of interest were disclosed.

### References

- Tada M, Kai M. Planar cell polarity in coordinated and directed movements. *Curr Top Dev Biol* 2012; 101:77-110; PMID:23140626; <http://dx.doi.org/10.1016/B978-0-12-394592-1.00004-1>
- Wu J, Mlodzik M. The frizzled extracellular domain is a ligand for Van Gogh/Stbm during nonautonomous planar cell polarity signaling. *Dev Cell* 2008; 15:462-9; PMID:18804440; <http://dx.doi.org/10.1016/j.devcel.2008.08.004>
- Hall A. Rho GTPases and the control of cell behaviour. *Biochem Soc Trans* 2005; 33:891-5; PMID:16246005; <http://dx.doi.org/10.1042/BST20050891>
- Schlessinger K, Hall A, Tolwinski N. Wnt signaling pathways meet Rho GTPases. *Genes Dev* 2009; 23:265-77; PMID:19204114; <http://dx.doi.org/10.1101/gad.1760809>
- Huang H, He X. Wnt/beta-catenin signaling: new (and old) players and new insights. *Curr Opin Cell Biol* 2008; 20:119-25; PMID:18339531; <http://dx.doi.org/10.1016/j.ccb.2008.01.009>
- Klingensmith J, Nusse R, Perrimon N. The *Drosophila* segment polarity gene *dishevelled* encodes a novel protein required for response to the wingless signal. *Genes Dev* 1994; 8:118-30; PMID:8288125; <http://dx.doi.org/10.1101/gad.8.1.118>
- Wallingford JB, Harland RM. Neural tube closure requires Dishevelled-dependent convergent extension of the midline. *Development* 2002; 129:5815-25; PMID:12421719; <http://dx.doi.org/10.1242/dev.00123>
- Gao C, Chen YG. Dishevelled: The hub of Wnt signaling. *Cell Signal* 2010; 22:717-27; PMID:20006983; <http://dx.doi.org/10.1016/j.cellsig.2009.11.021>
- Wynshaw-Boris A. Dishevelled: in vivo roles of a multifunctional gene family during development. *Curr Top Dev Biol* 2012; 101:213-35; PMID:23140631; <http://dx.doi.org/10.1016/B978-0-12-394592-1.00007-7>
- Sussman DJ, Klingensmith J, Salinas P, Adams PS, Nusse R, Perrimon N. Isolation and characterization of a mouse homolog of the *Drosophila* segment polarity gene *dishevelled*. *Dev Biol* 1994; 166:73-86; PMID:7958461; <http://dx.doi.org/10.1006/dbio.1994.1297>
- Klingensmith J, Yang Y, Axelrod JD, Beier DR, Perrimon N, Sussman DJ. Conservation of dishevelled structure and function between flies and mice: isolation and characterization of Dvl2. *Mech Dev* 1996; 58:15-26; PMID:8887313; [http://dx.doi.org/10.1016/S0925-4773\(96\)00549-7](http://dx.doi.org/10.1016/S0925-4773(96)00549-7)
- Tsang M, Lijam N, Yang Y, Beier DR, Wynshaw-Boris A, Sussman DJ. Isolation and characterization of mouse *dishevelled-3*. *Dev Dyn* 1996; 207:253-62; PMID:8922524; [http://dx.doi.org/10.1002/\(SICI\)1097-0177\(199611\)207:3<253::AID-AJA2>3.0.CO;2-G](http://dx.doi.org/10.1002/(SICI)1097-0177(199611)207:3<253::AID-AJA2>3.0.CO;2-G)

- Lijam N, Paylor R, McDonald MP, Crawley JN, Deng CX, Herrup K, Stevens KE, Maccaferri G, McBain CJ, Sussman DJ, et al. Social interaction and sensorimotor gating abnormalities in mice lacking Dvl1. *Cell* 1997; 90:895-905; PMID:9298901; [http://dx.doi.org/10.1016/S0092-8674\(00\)80354-2](http://dx.doi.org/10.1016/S0092-8674(00)80354-2)
- Hamblet NS, Lijam N, Ruiz-Lozano P, Wang J, Yang Y, Luo Z, Mei L, Chien KR, Sussman DJ, Wynshaw-Boris A. Dishevelled 2 is essential for cardiac outflow tract development, somite segmentation and neural tube closure. *Development* 2002; 129:5827-38; PMID:12421720; <http://dx.doi.org/10.1242/dev.00164>
- Wang J, Hamblet NS, Mark S, Dickinson ME, Brinkman BC, Segil N, Fraser SE, Chen P, Wallingford JB, Wynshaw-Boris A. Dishevelled genes mediate a conserved mammalian PCP pathway to regulate convergent extension during neurulation. *Development* 2006; 133:1767-78; PMID:16571627; <http://dx.doi.org/10.1242/dev.02347>
- Waxman JS, Hocking AM, Stoick CL, Moon RT. Zebrafish Dapper1 and Dapper2 play distinct roles in Wnt-mediated developmental processes. *Development* 2004; 131:5909-21; PMID:15539487; <http://dx.doi.org/10.1242/dev.01520>
- Fisher DA, Kivimäe S, Hoshino J, Suriben R, Martin PM, Baxter N, Cheyette BN. Three Dact gene family members are expressed during embryonic development and in the adult brains of mice. *Dev Dyn* 2006; 235:2620-30; PMID:16881060; <http://dx.doi.org/10.1002/dvdy.20917>
- Jiang X, Tan J, Li J, Kivimäe S, Yang X, Zhuang L, Lee PL, Chan MT, Stanton LW, Liu ET, et al. DACT3 is an epigenetic regulator of Wnt/beta-catenin signaling in colorectal cancer and is a therapeutic target of histone modifications. *Cancer Cell* 2008; 13:529-41; PMID:18538736; <http://dx.doi.org/10.1016/j.ccr.2008.04.019>
- Okerlund ND, Kivimäe S, Tong CK, Peng IF, Ullian EM, Cheyette BN. Dact1 is a postsynaptic protein required for dendrite, spine, and excitatory synapse development in the mouse forebrain. *J Neurosci* 2010; 30:4362-8; PMID:20335472; <http://dx.doi.org/10.1523/JNEUROSCI.0354-10.2010>
- Cheyette BN, Waxman JS, Miller JR, Takemaru K, Sheldahl LC, Khlebtsova N, Fox EP, Earnest T, Moon RT. Dapper, a Dishevelled-associated antagonist of beta-catenin and JNK signaling, is required for notochord formation. *Dev Cell* 2002; 2:449-61; PMID:11970895; [http://dx.doi.org/10.1016/S1534-5807\(02\)00140-5](http://dx.doi.org/10.1016/S1534-5807(02)00140-5)
- Gloy J, Hikasa H, Sokol SY. Frodo interacts with Dishevelled to transduce Wnt signals. *Nat Cell Biol* 2002; 4:351-7; PMID:11941372
- Suriben R, Kivimäe S, Fisher DA, Moon RT, Cheyette BN. Posterior malformations in Dact1 mutant mice arise through misregulated Vangl2 at the primitive streak. *Nat Genet* 2009; 41:977-85; PMID:19701191; <http://dx.doi.org/10.1038/ng.435>

### Acknowledgments

We thank our colleagues Anthony Wynshaw-Boris, Randall T Moon, and Kozo Kaibuchi for providing the *Dvl2* KO mouse line, pSuperTOP, and pSRE.L respectively.

### Funding

Supported by National Institutes of Health Grants R01HD055300 (Cheyette BNR) and T32 MH089920 (Yang XY), and also by the Department of Psychiatry and the Center for Neurobiology and Psychiatry at the University of California San Francisco.

- Wen J, Chiang YJ, Gao C, Xue H, Xu J, Ning Y, Hodes RJ, Gao X, Chen YG. Loss of Dact1 disrupts planar cell polarity signaling by altering dishevelled activity and leads to posterior malformation in mice. *J Biol Chem* 2010; 285:11023-30; PMID:20145239; <http://dx.doi.org/10.1074/jbc.M109.085381>
- Yang X, Cheyette BN. SEC14 and spectrin domains 1 (Sestd1) and Dapper antagonist of catenin 1 (Dact1) scaffold proteins cooperatively regulate the Van Gogh-like 2 (Vangl2) four-pass transmembrane protein and planar cell polarity (PCP) pathway during embryonic development in mice. *J Biol Chem* 2013; 288:20111-20; PMID:23696638; <http://dx.doi.org/10.1074/jbc.M113.465427>
- Kivimäe S, Yang XY, Cheyette BNR. All Dact (Dapper/Frodo) scaffold proteins dimerize and exhibit conserved interactions with Vangl, Dvl, and serine/threonine kinases. [Epub]. *BMC Biochem* 2011; 12:33; PMID:21718540; <http://dx.doi.org/10.1186/1471-2091-12-33>
- Sah VP, Seasholtz TM, Sagi SA, Brown JH. The role of Rho in G protein-coupled receptor signal transduction. *Annu Rev Pharmacol Toxicol* 2000; 40:459-89; PMID:10836144; <http://dx.doi.org/10.1146/annurev.pharmtox.40.1.459>
- Zhang L, Gao X, Wen J, Ning Y, Chen YG. Dapper 1 antagonizes Wnt signaling by promoting dishevelled degradation. *J Biol Chem* 2006; 281:8607-12; PMID:16446366; <http://dx.doi.org/10.1074/jbc.M600274200>
- Korinek V, Barker N, Morin PJ, van Wichen D, de Weger R, Kinzler KW, Vogelstein B, Clevers H. Constitutive transcriptional activation by a beta-catenin-Tcf complex in APC-/- colon carcinoma. *Science* 1997; 275:1784-7; PMID:9065401; <http://dx.doi.org/10.1126/science.275.5307.1784>
- DasGupta R, Kaykas A, Moon RT, Perrimon N. Functional genomic analysis of the Wnt-wingless signaling pathway. *Science* 2005; 308:826-33; PMID:15817814; <http://dx.doi.org/10.1126/science.1109374>
- Miehe S, Bieberstein A, Arnould I, Ihedeno O, Rütten H, Strübing C. The phospholipid-binding protein SESTD1 is a novel regulator of the transient receptor potential channels TRPC4 and TRPC5. *J Biol Chem* 2010; 285:12426-34; PMID:20164195; <http://dx.doi.org/10.1074/jbc.M109.068304>
- Mousley CJ, Tyeryar KR, Vincent-Pope P, Bankaitis VA. The Sec14-superfamily and the regulatory interface between phospholipid metabolism and membrane trafficking. *Biochim Biophys Acta* 2007; 1771:727-36; PMID:17512778; <http://dx.doi.org/10.1016/j.bbaliip.2007.04.002>
- Torban E, Wang HJ, Groulx N, Gros P. Independent mutations in mouse Vangl2 that cause neural tube defects in looptail mice impair interaction with members of the Dishevelled family. *J Biol Chem* 2004; 279:52703-13; PMID:15456783; <http://dx.doi.org/10.1074/jbc.M408675200>

33. Iliescu A, Gravel M, Horth C, Kibar Z, Gros P. Loss of membrane targeting of Vangl proteins causes neural tube defects. *Biochemistry* 2011; 50:795-804; PMID:21142127; <http://dx.doi.org/10.1021/bi101286d>
34. Itoh K, Antipova A, Ratcliffe MJ, Sokol S. Interaction of dishevelled and Xenopus axin-related protein is required for wnt signal transduction. *Mol Cell Biol* 2000; 20:2228-38; PMID:10688669; <http://dx.doi.org/10.1128/MCB.20.6.2228-2238.2000>
35. Miller JR, Rowning BA, Larabell CA, Yang-Snyder JA, Bates RL, Moon RT. Establishment of the dorsal-ventral axis in Xenopus embryos coincides with the dorsal enrichment of dishevelled that is dependent on cortical rotation. *J Cell Biol* 1999; 146:427-37; PMID:10427095; <http://dx.doi.org/10.1083/jcb.146.2.427>
36. Schwarz-Romond T, Merrifield C, Nichols BJ, Bienz M. The Wnt signalling effector Dishevelled forms dynamic protein assemblies rather than stable associations with cytoplasmic vesicles. *J Cell Sci* 2005; 118:5269-77; PMID:16263762; <http://dx.doi.org/10.1242/jcs.02646>
37. Zhang L, Zhou H, Su Y, Sun Z, Zhang H, Zhang L, Zhang Y, Ning Y, Chen YG, Meng A. Zebrafish Dpr2 inhibits mesoderm induction by promoting degradation of nodal receptors. *Science* 2004; 306:114-7; PMID:15459392; <http://dx.doi.org/10.1126/science.1100569>
38. Capelluto DG, Kutateladze TG, Habas R, Finkielstein CV, He X, Overduin M. The DIX domain targets dishevelled to actin stress fibres and vesicular membranes. *Nature* 2002; 419:726-9; PMID:12384700; <http://dx.doi.org/10.1038/nature01056>
39. Wilde C, Genth H, Aktories K, Just I. Recognition of RhoA by Clostridium botulinum C3 exoenzyme. *J Biol Chem* 2000; 275:16478-83; PMID:10748216; <http://dx.doi.org/10.1074/jbc.M910362199>
40. Louie SH, Yang XY, Conrad WH, Muster J, Angers S, Moon RT, Cheyette BN. Modulation of the beta-catenin signaling pathway by the dishevelled-associated protein Hipk1. *PLoS One* 2009; 4:e4310; PMID:19183803; <http://dx.doi.org/10.1371/journal.pone.0004310>