

UC San Diego

UC San Diego Previously Published Works

Title

Synchronous dynamics of zooplankton competitors prevail in temperate lake ecosystems

Permalink

<https://escholarship.org/uc/item/7g53q8fq>

Journal

Proceedings of the Royal Society B: Biological Sciences, 281(1788)

ISSN

0962-8452

Authors

Vasseur, DA

Fox, JW

Gonzalez, A

et al.

Publication Date

2014-06-25

DOI

10.1098/rspb.2014.0633

Peer reviewed



CrossMark
click for updates

Research

Cite this article: Vasseur DA *et al.* 2014
Synchronous dynamics of zooplankton
competitors prevail in temperate lake
ecosystems. *Proc. R. Soc. B* **281**: 20140633.
<http://dx.doi.org/10.1098/rspb.2014.0633>

Received: 14 March 2014

Accepted: 4 June 2014

Subject Areas:

ecology

Keywords:

synchrony, compensatory dynamics,
zooplankton, wavelet

Author for correspondence:

David A. Vasseur

e-mail: david.vasseur@yale.edu

Electronic supplementary material is available
at <http://dx.doi.org/10.1098/rspb.2014.0633> or
via <http://rspb.royalsocietypublishing.org>.

Synchronous dynamics of zooplankton competitors prevail in temperate lake ecosystems

David A. Vasseur¹, Jeremy W. Fox², Andrew Gonzalez³, Rita Adrian⁴,
Beatrix E. Beisner⁵, Matthew R. Helmus⁶, Catherine Johnson⁷,
Pavel Kratina⁸, Colin Kremer^{9,10}, Claire de Mazancourt¹¹,
Elizabeth Miller^{9,10}, William A. Nelson¹², Michael Paterson¹³,
James A. Rusak¹⁴, Jonathan B. Shurin¹⁵ and Christopher F. Steiner¹⁶

¹Department of Ecology and Evolutionary Biology, Yale University, New Haven, CT 06520, USA

²Department of Biological Sciences, University of Calgary, Calgary, Alberta, Canada T2N 1N4

³Department of Biology, McGill University, Montreal, Quebec, Canada

⁴Leibniz-Institute of Freshwater Ecology and Inland Fisheries, Berlin, Germany

⁵Department of Biological Sciences, University of Quebec at Montreal, Montreal, Quebec, Canada H3C 3P8

⁶Department of Animal Ecology, Amsterdam Global Change Institute, Vrije Universiteit, Amsterdam 1081 HV, Netherlands

⁷Fisheries and Oceans Canada, Bedford Institute of Oceanography, Dartmouth, Nova Scotia, Canada B2Y 4A2

⁸School of Biological and Chemical Sciences, Queen Mary University of London, London E1 4NS, UK

⁹W. K. Kellogg Biological Station and Department of Plant Biology, Michigan State University, Hickory Corners, MI 49060, USA

¹⁰Department of Plant Biology, Michigan State University, East Lansing, MI 48824, USA

¹¹Centre for Biodiversity Theory and Modelling, Station d'Ecologie Expérimentale du Centre National de la Recherche Scientifique à Moulis, Moulis 09200, France

¹²Department of Biology, Queen's University, Kingston, Ontario, Canada K7L 3N6

¹³IISD-Experimental Lakes Area, 161 Portage Ave East 6th Floor, Winnipeg, MB, Canada R3B 0Y4

¹⁴Ontario Ministry of the Environment, Dorset Environmental Science Centre, Dorset, Ontario, Canada P0A 1E0

¹⁵Section of Ecology, Behavior and Evolution, University of California-San Diego, 9500 Gilman Drive #0116, La Jolla, CA 92093, USA

¹⁶Department of Biological Sciences, Wayne State University, Detroit, MI 48202, USA

Although competing species are expected to exhibit compensatory dynamics (negative temporal covariation), empirical work has demonstrated that competitive communities often exhibit synchronous dynamics (positive temporal covariation). This has led to the suggestion that environmental forcing dominates species dynamics; however, synchronous and compensatory dynamics may appear at different length scales and/or at different times, making it challenging to identify their relative importance. We compiled 58 long-term datasets of zooplankton abundance in north-temperate and subtropical lakes and used wavelet analysis to quantify general patterns in the times and scales at which synchronous/compensatory dynamics dominated zooplankton communities in different regions and across the entire dataset. Synchronous dynamics were far more prevalent at all scales and times and were ubiquitous at the annual scale. Although we found compensatory dynamics in approximately 14% of all combinations of time period/scale/lake, there were no consistent scales or time periods during which compensatory dynamics were apparent across different regions. Our results suggest that the processes driving compensatory dynamics may be local in their extent, while those generating synchronous dynamics operate at much larger scales. This highlights an important gap in our understanding of the interaction between environmental and biotic forces that structure communities.

1. Introduction

The extent to which communities of interspecific competitors exhibit synchronized fluctuations over time is intrinsically linked to community stability and moreover

may reflect important attributes of the functional diversity of communities [1,2] and of the processes structuring community composition [3–5]. Synchrony and its alternative pattern, compensation (or compensatory dynamics), are mutually exclusive phenomenological features of community dynamics that can arise from many underlying mechanisms [6,7]. Compensation may reflect a reciprocal negative interaction among competitors [4]; however, it also can arise when species respond oppositely to changes in an environmental factor [8], or when they respond to different environmental factors which are themselves negatively correlated through time. By contrast, species that exist in a temporally variable environment must also be qualitatively similar in their ability to tolerate the environment's extremes (e.g. phosphorus is essential for plankton but some species better tolerate phosphorus depletion), suggesting that the environment may select species with similar traits, which in turn predisposes species to exhibit synchronized dynamics [1]. The extent of synchronous and compensatory dynamics in competitive communities may therefore reflect differences in the relative strength of environmental forcing and competition [1,3].

Synchronous and compensatory dynamics are also of fundamental interest in community ecology because they regulate the relationship between population and temporal community variability. At the scale of populations, temporal variability is an indicator of stability which is often linked to extinction probability [9,10]. Similarly, temporal variability at the aggregate or community level, 'community variability' [7,11], is of fundamental interest as an index of community stability [12,13] and is of applied interest as a potential leading indicator of nonlinear changes in ecosystem state [14,15]. When species contribute additively to a particular community attribute (e.g. total biomass), the temporal variability of the attribute is given by the sum of all terms in the community variance–covariance matrix. All else being equal, communities with species dynamics that negatively covary over time (compensatory dynamics) will exhibit lower community variability than communities whose covariance terms are positive on average (synchronous dynamics) [7]; however, the same processes that generate negative covariation can also destabilize communities by increasing species fluctuations [16].

Many studies have measured the synchrony of competitors in experiments and nature [3,7,17–20] and some have attempted to infer the relative contributions of competition and environmental factors in these communities [1,3,20]. For example, using annual census of terrestrial plants and animals, Houlahan *et al.* [3] found that species are on average synchronized and suggested that environmental drivers were relatively more important than competition for shaping community dynamics. Although appealing, the argument that synchronous dynamics result when environmental drivers are relatively more important than density-dependent biotic feedbacks is challenging to verify, because the drivers leading to synchronous and compensatory dynamics need not necessarily be in conflict. Synchronous and compensatory dynamics may operate on different timescales [20,21] or during different periods [21] in which case the frequency and temporal extent of sampling largely dictates which drivers are perceived to be the most critical. For example, if competing species are commonly and uniformly affected by environmental variation, it simply generates a temporally changing arena in which the outcomes of competition are enacted. If species are sampled once annually as in [3], the

signature of competition may be entirely obscured by the synchronizing effect of 'good' versus 'bad' years (e.g. drought versus wet), even if it is an important driver of species' relative fitness and persistence [22]. Furthermore, it has been shown that embedding competitors in a food web context can cause them to respond synchronously to environmental disturbance even when the underlying dynamics are compensatory [23], highlighting the challenge of identifying the mechanisms underlying dynamics. Measuring and interpreting synchrony and compensation thus requires, at a minimum, refined estimators of synchrony and compensation across different timescales [17–21].

Freshwater plankton communities have been a focus of recent work on the scale-dependence of compensatory and synchronous dynamics. In phytoplankton and zooplankton communities in Lake Constance (Bodensee), compensatory dynamics have been shown to occur regularly at scales ranging from six months to 1 year while synchronous dynamics dominate at most other scales [17,21]. Synchrony of zooplankton communities in Little Rock Lake intensified at the annual scale during experimental acidification, with no apparent alteration of covariation patterns at other scales [18,19]. Freshwater plankton are ideal for analyses of community variability due to their short generation times and importance in long-term monitoring programmes worldwide. In temperate regions, lakes experience environmental fluctuations on timescales ranging from short-term weather fluctuations (e.g. solar irradiance and wind-driven mixing) to long-term trends in nutrient loading, pH, temperature and other factors.

In addition to timescale, communities may transition between synchrony to compensation over time at fixed scales. In Little Rock Lake, experimental acidification altered the expression of synchronization at the annual scale in a zooplankton community [18] and elsewhere, natural and anthropogenic changes in long-term nutrient loads have been shown to impact community composition [24,25]. Within the growing season, the intensity of competition among zooplankton can vary greatly as nutrients become depleted and well-edible algae are replaced by colonial forms [26]. Transitions between synchrony and compensatory dynamics may be common at a variety of scales and yield important insight into the mechanisms structuring the distribution of temporal dynamics of species in competitive communities; however, detecting such transitions requires advanced statistical machinery capable of resolving patterns in both time and scale.

Here, we quantify patterns of dynamics within communities in long-term time series (mean 17 years) of crustacean zooplankton species from 58 study sites originating from 52 North American and European temperate lakes and two sub-tropical lakes (figure 1). We employ a wavelet analysis, which estimates the amount of variation in a time series attributable to a particular frequency (scale) at a particular point in time [27], to generate a scale and time-resolved binary metric of synchronous/compensatory dynamics among zooplankton assemblages within each of our study sites. Our extensive dataset allows us to then overlay this information from various lakes to determine the relative prevalence of synchronous and compensatory dynamics over a wide range of temporal scales (monthly to decadal) and across a large span of time (1971–2008) in a large sample of 58 study sites (54 lakes). The objective of this work is to (i) provide a critical assessment and frame of reference for

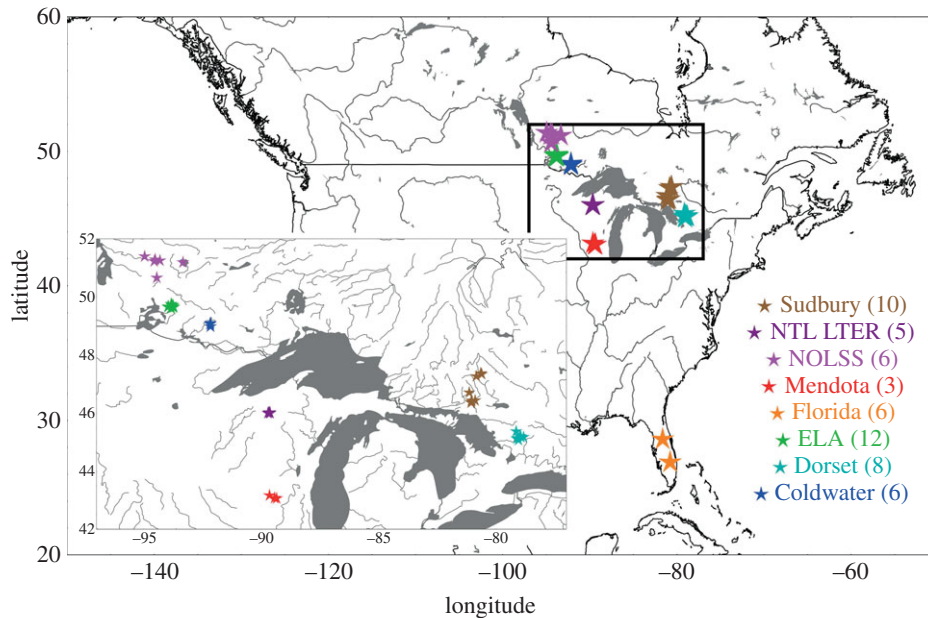


Figure 1. Geographical locations of study sites grouped by region. The inset map shows an enlargement of the region in the black box. Numbers in parentheses indicate the number of study sites in each region. Study sites represent individual lakes in all regions except Florida, where Lake Okechobee was sampled in five basins within the lake. In addition to North American lakes, our study included two European sites: Muggelsee, Germany, (52.43° N, 13.65° E) and Lake Zürich, Switzerland (47.37° N, 8.55° E).

the prevalence of synchronous and compensatory dynamics in competitive communities and (ii) to highlight potentially important scales and times at which transitions in community dynamics occur and may help to identify the mechanisms structuring competitor dynamics.

2. Material and methods

(a) Data

Temporal data were compiled from a number of long-term monitoring programmes of temperate zone lakes in North America and Europe. Crustacean zooplankton data from the following regions were included: eight lakes from WI, USA North Temperate Lakes Region LTER and Mendota region (University of Wisconsin Center for Limnology); eight lakes from the Dorset region of Muskoka, Ontario, Canada (Ontario Ministry of Environment Dorset Environmental Science Centre); 10 lakes from the Sudbury region, Ontario, Canada (Laurentian University Cooperative Freshwater Ecology Unit); 12 lakes from the Experimental Lakes Area (Department of Fisheries and Oceans Freshwater Institute) near Kenora, Ontario, Canada and six lakes from the Coldwater Lakes Project in northwestern Ontario, Canada (Ontario Ministry of Natural Resources); six lakes from the Northwest Ontario Lake Size Series project [28]; Lake Apopka, FL, USA (Mike Coveney, St. Johns River Water Management District); Lake Okechobee, FL, USA (five basin sites on this, the largest of our lakes); Karl Havens, Florida Sea Grant College Program; Müggelsee in Berlin, Germany [29]; and Lake Zürich in the southwestern part of the canton of Zürich, Switzerland [30]. This resulted in a total of 58 sample sites in 54 different lakes distributed across North America and Europe (figure 1).

Surveys varied in their frequency of sampling and period of temporal coverage (electronic supplementary material, figure S3); however, our methods (see below) select the scales and time periods during which a particular sampling site can reliably contribute information. Zooplankton were sampled, depending on the survey, using nets, Schindler-Patalas traps or tube samplers, with identification to species. A total of 250 to more than 1000

individuals were counted in each sample. In this analysis, we only consider crustaceans (cladocerans and copepods) and exclude unidentifiable juvenile stages. Species belonging to the genera *Bosmina*, *Chydorus* and *Alona/Alonella* were aggregated within each of those genera due to variable taxonomic resolution among the surveys. A more detailed description of the sampling methods is given in [31]. The average number of species present per sampling site was 27 (range 11–40).

(b) Wavelet analysis

To provide a scale- and time-resolved metric of synchronization, we began by calculating the continuous wavelet transformation $W_{k,l}$ of the time series $x_{k,l}$ for each zooplankton species (k) in each lake (l) as the convolution of $x_{k,l}$ with the conjugate of the scaled and translated Morlet wavelet $\psi(\cdot)$ [27,32]

$$W_{k,l}(n, s) = s^{-0.5} \sum_{i=1}^N x_{k,l}(\tau_i) \cdot \psi^* \left(\frac{n - t_i}{s} \right). \quad (2.1)$$

In expression (2.1), t_i represents the set of Julian dates on which $x_{k,l}$ was sampled and N is the total number of samples of $x_{k,l}$. The parameters n and s represent the time and scale localization, respectively, of the Morlet wavelet, which is the product of a Gaussian distribution and a complex waveform, $\psi(\tau) = \pi^{-1/4} e^{i\omega_0 \tau} e^{-\tau^2/2}$. We set the wavenumber of the Morlet wavelet, ω_0 , which controls the number of oscillations within the effective width of the Gaussian distribution, equal to 6 as in previous studies [18,27].

In order to facilitate comparison across our study sites, we chose standardized arrays of times (n) and scales (s) at which to sample the wavelet transformation and we subset these depending on the limitations of each time series. In the temporal dimension, we sampled the wavelet on every 10th Julian day provided that it fell within the ‘cone of influence’, which is defined as the range of points further than $\sqrt{2}s$ from the start and end of the time series [27]. In the scale dimension, we generated an array of scales according to

$$s = 365.25 \times 2^{j\delta}, \quad (2.2)$$

where $\delta = 0.1$ and j is a sequence of integers. We set the minimum value of j such that the smallest scale was not less than

three times the average time between successive samples in the time series. We set the maximum value of j such that the largest scale did not exceed half the total period of sampling in the time series; however, only scales smaller than this threshold included samples that were admissible based upon the ‘cone of influence’.

Most of our time series were unevenly sampled through time, potentially producing combinations time and scale which were unreliable within the boundaries defined above. For example, if sampling was discontinued during winter (which is common in temperate lakes), there may be few or no data points in the neighbourhood of the wavelet at shorter scales during winter. To deal with this, we further discarded any wavelet samples for which fewer than 10 observations occurred within $\pm\sqrt{2}s$ of the centre of the Morlet wavelet.

(c) Measuring synchrony

We first quantified the relative amplitude of zooplankton crustacean species dynamics within each of l sites using the localized wavelet modulus ratio [18]

$$\rho_l(n, s) = \frac{\Lambda_{n,s} \left(\left| \sum_k W_{k,l}(n, s) \right| \right)}{\Lambda_{n,s} \left(\sum_k |W_{k,l}(n, s)| \right)}, \quad (2.3)$$

where $|\cdot|$ denotes the complex modulus and $\Lambda_{n,s}(\cdot) = \int e^{-(1/2)((n-t)/s)^2} (\cdot) dt$ is a Gaussian localization function in time n . The localized wavelet modulus ratio computes the ratio of the actual amplitude of community fluctuations against the cumulative amplitude of population fluctuations at each time and scale. The numerator in equation (2.3) uses the modulus of the sum of the wavelet transform; by summing wavelet coefficients prior to computing the modulus, the realized amplitude is discounted by species whose dynamics have opposite phases. The denominator, the sum of species’ moduli, is the maximum possible amplitude given a perfect alignment of phases. Thus, the wavelet modulus ratio is bounded between values of zero and one. A value of zero indicates that compensatory dynamics result in a community variance equal to zero, whereas a value of one indicates perfect synchronization of population dynamics and a maximum value of the community variance. The modulus ratio is akin to a family of multivariate indices of synchronization [7] that measure the sum or mean of pairwise species covariances (or here co-amplitudes) by comparing realized variances or amplitudes of communities to the values that would be achieved under perfect synchronization, thus superseding the need to compute pairwise relationships directly using correlative or co-spectral techniques. Although uneven sampling can generate bias in the estimates of wavelet power (W^2), this bias is consistent within each sampling site because sampling occurred for all zooplankton species at the same points in time, making our measure of synchronization (based on relative amplitude) unbiased in the presence of uneven sampling.

To measure synchronization, we generated 1000 null-model outcomes in each site (l), at each scale (s) and time (n) by attributing a random phase-shift on the interval $(0, 2\pi)$ to each of the k species and recalculating the modulus ratio (2.3) [18]. Because this procedure retains the distribution of amplitudes of variation expressed by different species, it generates an accurate distribution for the value of the local wavelet modulus ratio under the assumption that species’ dynamics are unrelated. Although it is possible to use this distribution of outcomes to statistically differentiate synchronous and compensatory dynamics from independent fluctuations [18], the p -value adjustment required by the combined number of scales, times and lakes to which we would apply this test would require on the order of 10^6 randomizations at each of the *ca* 1.1 million combinations of time, scale and sample site, an operation that is computationally infeasible. Instead, we generate a binary response metric at each combination of scale, time and lake by assigning a value

of one to cases where $\rho_l(n, s)$ exceeded the median value of the 1000 bootstrapped realizations and a zero otherwise. We then summarized this metric across our study regions and across the entire dataset to determine the fraction of all lakes demonstrating synchronized dynamics at any particular time and scale.

For the entire dataset, we determined whether the set of lakes contributing information to a particular time and scale were more or less synchronized than expected by chance using a binomial test. Given the large number of tests performed (all combinations of time and scale), we applied a Benjamini–Hochberg–Yekutieli correction to control the false discovery rate [33]. Similar analyses were not possible at the regional scale due to small sample sizes (number of lakes). The wavelet analysis was performed using custom code in R v. 2.6.0 (R development core team), and summary statistics and plots were generated using MATHEMATICA v. 9.0. A summary schematic of our analysis is available (electronic supplementary material, figure S1).

3. Results

Synchronous dynamics are common in freshwater zooplankton communities. Considering all temporal scales (approximately monthly to decadal scales of variation), times (sampling dates ranging from 1971 to 2008) and study sites (58 sites in 54 lakes), we found that zooplankton communities were more synchronized than the median of our null model in 85.8% of these combinations (14.2% showed compensatory dynamics) (figure 2). The vast majority of incidences (79%) were associated with a q -value equal to 1, meaning that the observed dynamics were more synchronized than all 1000 of our null-model realizations (result not shown). Values of the wavelet modulus ratio less than approximately 0.4 were predominantly compensatory, whereas those greater than approximately 0.4 were predominantly synchronous. This implies that communities that were more synchronized than the median of null-model realizations still expressed substantial variation in their extent of synchronization. Strong synchrony (wavelet modulus ratios close to 1) mainly occurred at scales near 1 year; shorter and longer scales tended to exhibit weaker synchronization (*cf.* figure 2*b–d*).

We searched for the consistency of dynamics (synchrony or compensation) across study sites by region (using six different study regions) and across the entire 58-site dataset (figure 3). With the entire dataset, we applied a binomial test to determine whether lakes exhibited similar dynamics at each combination of time and scale. At the regional scale, smaller sample sizes precluded the use of statistical tests. Synchronous dynamics are pervasive at the annual scale in all regions and across the entire dataset ($p < 0.0066$); however, there are no combinations of time and scale at which a significant fraction of sites exhibit compensatory dynamics across the entire dataset ($p > 0.05$). Rather, times and scales at which compensatory dynamics are predominant tend to differ across regions; while both the Experimental Lakes Area (ELA) and Sudbury area lakes (figure 3*a,e*) show periods of compensatory zooplankton dynamics at scales greater than 1 year, these are expressed at different times in the two areas and thus are not visible in the aggregate plot (figure 3*m*). Similar mismatches among regions are also evident at scales smaller than 1 year.

At longer timescales (2–10 years), the entire dataset exhibits a larger fraction of lakes with synchronized dynamics after *ca* 1984, but not prior ($p < 0.0066$; figure 3*m*). This temporal transition is echoed at the regional scale in the Sudbury

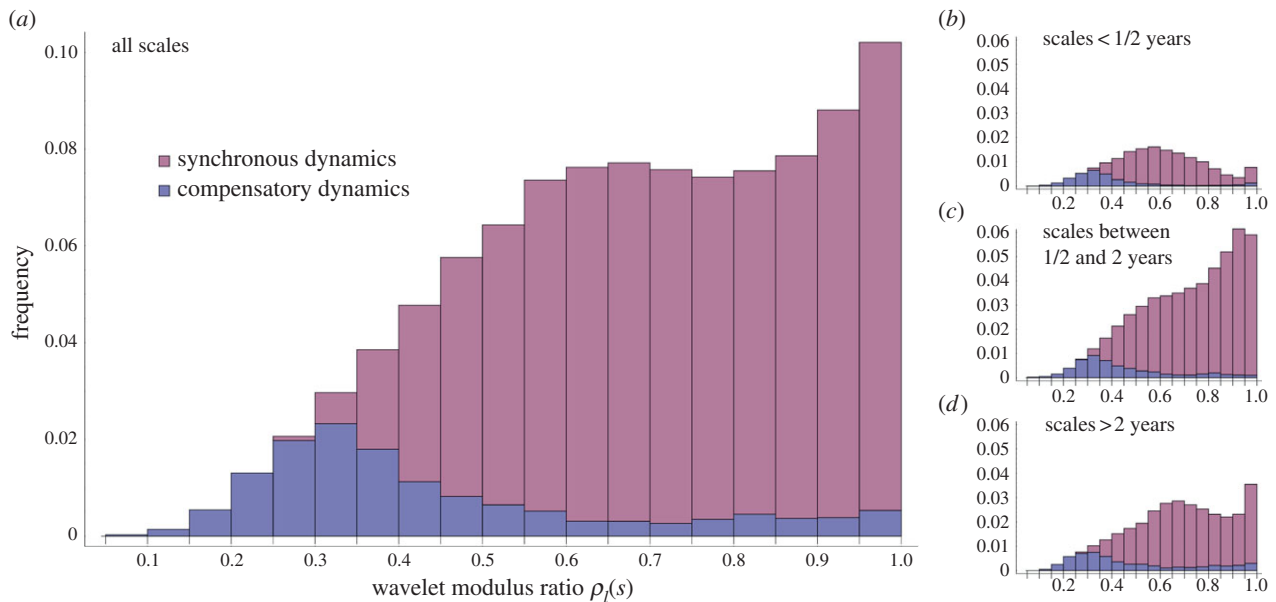


Figure 2. (a) The frequency of values of the wavelet modulus ratios observed across all combinations of time, scale and site in the analysis; a value of 0.3 indicates that the amplitude of biomass variability in the community is 30% the amount it would express if species' dynamics were perfectly synchronized. Colours demarcate how common synchronous and compensatory dynamics are at each value of the wavelet modulus ratio—as determined by comparison against the null model that assumed no correlation among species dynamics. In total, the relative incidence of synchronous dynamics was 85.8% (compensatory dynamics 14.2%). Panels (b–d) further partition this result by different scales of variation (axes are the same as panel (a)); relatively more contributions come from intermediate scales (between 1/2 and 2 years) because many sites were sampled at frequencies commensurate with this range.

and Dorset areas (figure 3*e,g*) suggesting that important and widespread changes that yielded greater long-term synchronization of zooplankton dynamics within lakes occurred at this time.

4. Discussion

Characterizing patterns across all combinations of timescale, sampling date and study site, we found that synchronous dynamics were far more prevalent in lake zooplankton communities than compensatory dynamics. Although we found a range of scales over which a significant fraction of our study lakes demonstrated synchronized dynamics, we found no scales at which a significant fraction demonstrated compensatory dynamics. Furthermore, we detected a significant change over time in the fraction of study sites demonstrating synchronized dynamics at long timescales, an effect that may be caused by recovery from anthropogenic disturbance in a subset of our study lakes.

It is no surprise that we find a predominance of strong synchronization of zooplankton species at and around the scale of 1 year in our analysis (figures 2 and 3) and that this predominance is unchanged through time. Seasonal variation drives strong patterns in both the abiotic (e.g. temperature and nutrients) and biotic (e.g. resources and predators) factors that determine zooplankton abundance [26,34] and the extent to which the prevailing factors seasonally vary in temperate systems leads to synchronous variation among a large fraction of zooplankton species [26]. More interesting, is the rarity of compensatory dynamics at scales below and above 1 year. Below the 1-year scale, we expect resource competition to be ongoing and species may exhibit compensatory dynamics via their temporal partitioning of the growing season [26]; above 1 year and competitive exclusion and species replacement may be important processes driving compensatory dynamics [7].

Given the wealth of theory suggesting that compensatory dynamics should be a common facet of coexisting competitors [4,6–8,35,36], the rarity of compensatory dynamics in our analysis is surprising. A possible explanation is that freshwater zooplankton species are highly differentiated and therefore only weak interspecific competitors. However, this is unlikely given that co-occurring species of zooplankton are known to demonstrate little variation in life-history traits suggesting use of common resources [37] and negative reciprocal interactions among zooplankton taxa common to our study lakes have been previously demonstrated [38,39]. A more likely hypothesis explaining the rarity of compensatory dynamics is that the period during which intense competition occurs may be confined to a rather short portion of the seasonal cycle [21,26]; detecting compensatory dynamics would therefore then require sampling frequencies greater than those employed in most of our study lakes. In addition, our analysis of the complete assemblage of zooplankton species includes interactions other than competition. Larger bodied crustacean zooplankton are known to prey on smaller cladocerans and copepods and although these species make up a relatively small fraction of the zooplankton biomass in most lakes they may have important impacts on the expression of patterns in the dynamics.

Although our analysis revealed compensatory dynamics in 14.2% of all scales and times in our 58 zooplankton communities, we detected no times or scales at which compensatory dynamics co-occurred in the majority of these lakes and very few instances where compensatory dynamics dominated any particular region. This suggests that the mechanisms driving compensatory dynamics may be local in their extent and/or vary substantially in their strength across lakes. Because compensatory dynamics are more likely to occur during periods where resources are limiting for a subset of species [4,7,21], and such periods occur only during certain parts of the seasonal succession [26], differences in the physical and biological

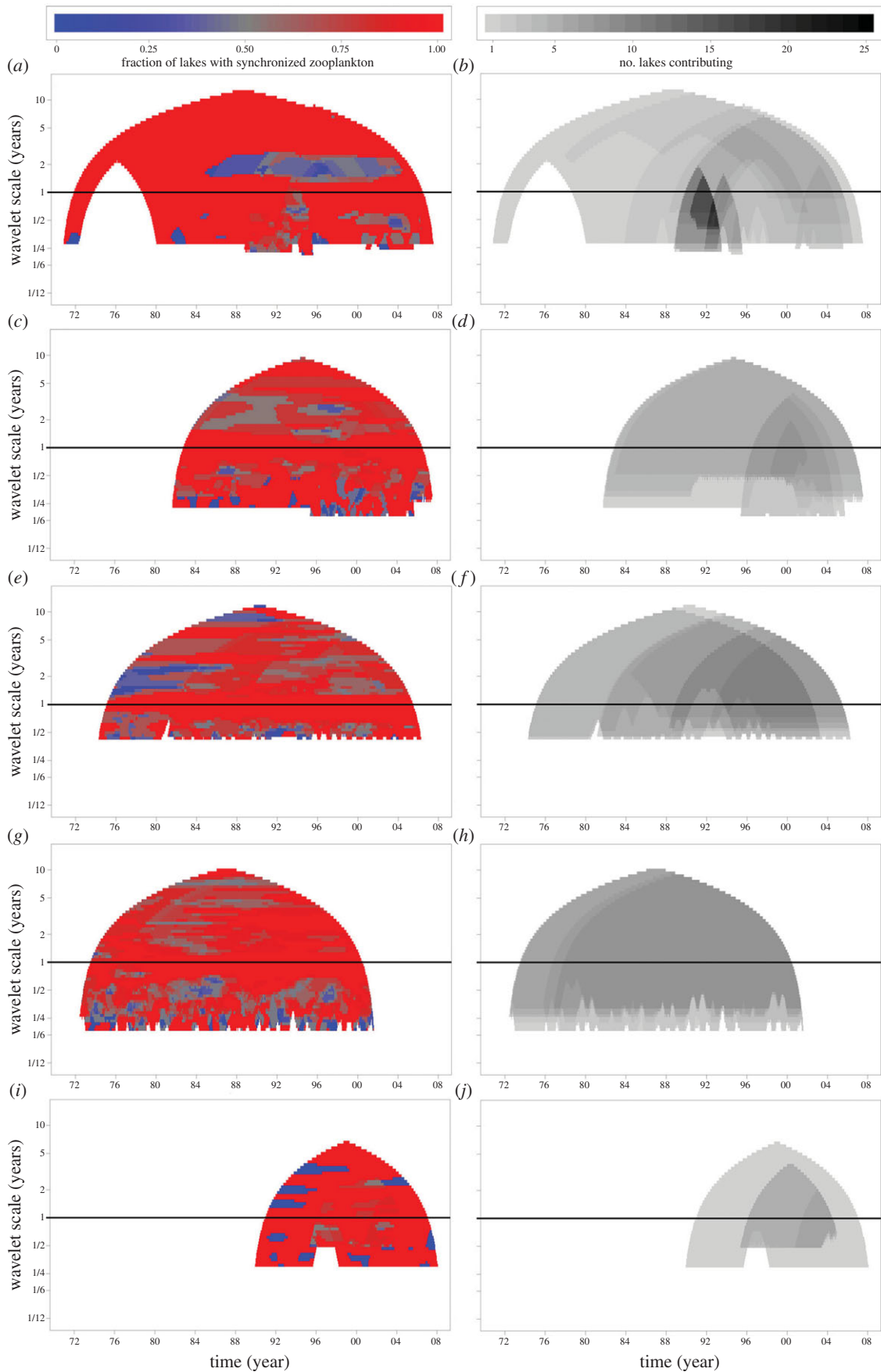


Figure 3. The fraction of study sites demonstrating synchronized zooplankton dynamics (left-side panels) and the number of lakes contributing information (right-side panels) at each time and scale, broken down by region. Panels (a,b) show aggregated information for the ELA, NOLSS and Coldwater lakes; panels (c,d) show NTL and Mendota lakes; panels (e,f) show Sudbury lakes; panels (g,h) show Dorset lakes; panels (i,j) show Florida lakes; panels (k,l) show Lake Zürich and Muggelsee and panels (m,n) show aggregated information from all study lakes. In panel (m), the black etching encloses a domain in which synchronized dynamics are more common across sites than expected by chance ($\alpha = 0.025$; $p < 0.0066$). There are no domains on this plot in which compensatory dynamics are more common across sites than expected by chance. Typically, between 10 and 25 study sites contributed information at each combination of time and scale; however, as many as 44 sites contributed at certain combinations. The conical shape of these figures arises because longer scales require longer time series to generate reliable Wavelet transformations.

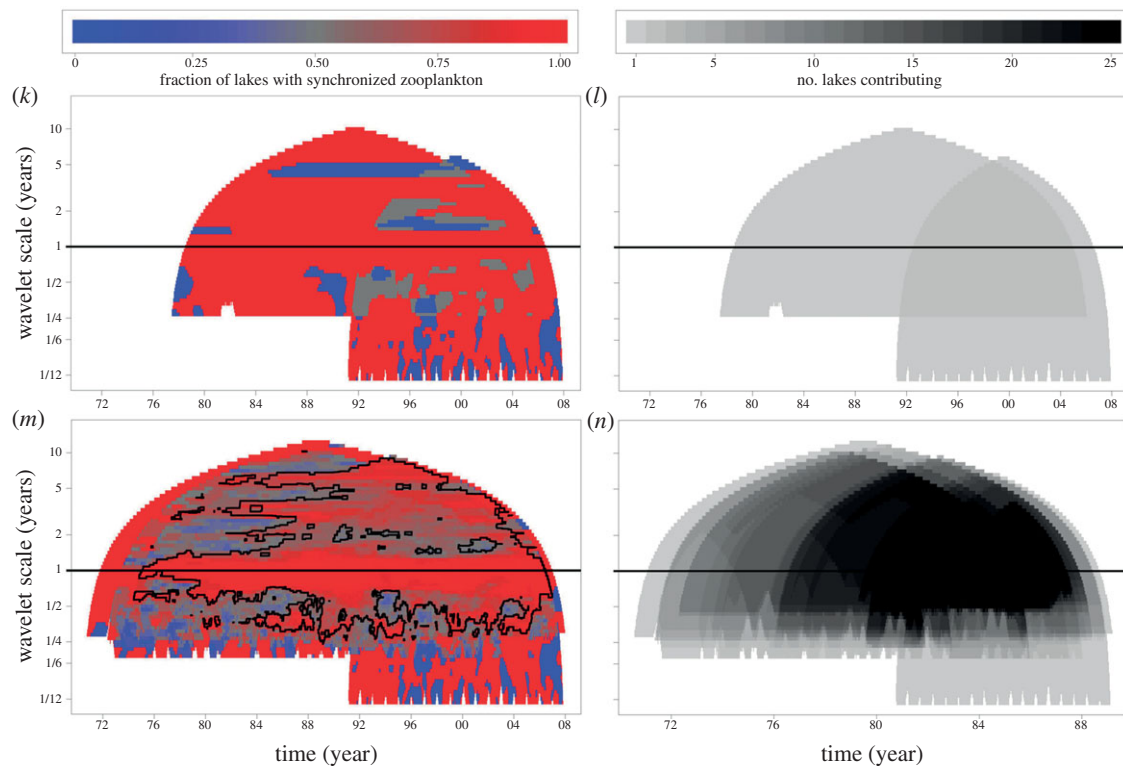


Figure 3. (Continued.)

characteristics of nearby lakes, and differences in the seasonal forcing regime of spatially distant lakes, may ensure that compensatory dynamics lack coherence across study sites and/or regions. In addition, metacommunity models have shown that locally driven compensatory dynamics can be quickly overcome by environmental- and dispersal-driven synchronization [40] suggesting that compensatory dynamics may be unstable in the presence of other regional factors.

In addition to these broader patterns, our method also revealed scale-specific temporal changes in synchrony and compensation. Although we find no consistent temporal changes at short scales (less than 1 year), we find that zooplankton communities in the Sudbury and Dorset regions became more synchronized at longer scales (more than 1 year) from *ca* 1984 onwards. This shift towards long-term synchronization of the zooplankton communities in these lakes is potentially a result of biological restructuring and recovery from anthropogenic disturbances such as lake acidification and eutrophication. In the Sudbury region, it has been well established that the growth of acid-sensitive species was substantially impaired prior to 1980, but as pH increased over the mid-1980s the biomass of acid-sensitive species increased [41]. The shift towards synchronized dynamics at long timescales suggests that there was no compensating decline in the biomass of acid-tolerant species in this system, but rather that both acid-tolerant and acid-intolerant species exhibited slowly increasing biomass (albeit at different rates), during the recovery period. In the Dorset area lakes, larger zooplankton body sizes have increased biomass due to a variety of factors stemming from acidification recovery [42]. Similar results have been witnessed in response to eutrophication in Lake Constance from 1920 to 1980 (Southern Germany); during eutrophication, crustacean species that did not go extinct all increased in biomass but at relatively different rates [25]. Previous work has shown that whole-lake acidification induced synchronized dynamics at the annual scale in

the zooplankton community in Little Rock Lake, because cold-tolerant species were more greatly affected, thereby selecting differentially for warm-season growers [18]. By contrast, we find that synchronous dynamics are prevalent at the annual scale and across most other scales even in the absence of anthropogenic disturbances.

Our results provide a new and detailed baseline against which the study of zooplankton community dynamics, and the dynamics of competitive communities in general, can be compared and contrasted. For example, the compensatory dynamics described in the acidified basin of Little Rock Lake [18] are an anomaly relative to not only the reference basin of the same lake, but to our entire set of study lakes, suggesting that anthropogenic disturbances may be possible to detect by identifying anomalies against (or within) our reference data. Additionally, contrasting our results to zooplankton communities from lakes without fish, with introduced top predators such as rainbow trout, or where fish are anadromous, could provide important insight into the top-down structuring forces of predators. Furthermore, coupling our results with lake hydrology, water chemistry and climate data may provide insight into the mechanisms linking the environment to the dynamics of competitors.

Although we find a predominance of synchronized dynamics, our results also demonstrate that synchronized communities can have an aggregate (e.g. total biomass) variance that is relatively low. For example, synchrony was more prevalent than compensatory dynamics when the modulus ratio varied between 0.35 and 1.0 (figure 2) but at the lower end of this range the community variance is more than four times smaller than that of a perfectly synchronized community. Thus, the widespread synchronization we detect in our analysis still represents a significant reduction in community variability and therefore may not be as detrimental to ecosystem stability and population persistence as is commonly thought [6,17,43].

Unlike previous work that used methods sensitive to only the dominant mode of variation and produced a measure of variability averaged across time, our analysis parses out the effect of variation occurring at different timescales and during different time periods. Although scale- and time-resolving methods have become commonplace in understanding patterns of species covariation [17,18,20,44], ours is the first analysis to seek patterns across broad spatial and temporal scales. We found evidence for widespread synchronous dynamics at a broad range of times and scales, while compensatory dynamics were relatively rare and incoherently distributed among different times and scales in our study lakes. Although, we found only few regionally consistent changes in zooplankton synchronization over time, this result is itself important—indicating that local drivers of zooplankton dynamics and heterogeneity among lakes are strong enough to obscure larger scale patterns. The rarity of compensatory dynamics, which are assumed to be an essential feature of competitive coexistence, brings into

question our understanding of the mechanisms maintaining coexistence of competitors. Future theoretical and experimental work should aim to address how diverse species assemblages persist despite their tendency to display synchronous dynamics across long reaches of time and scale.

Acknowledgements. Toni Klausichs assisted in the development and execution of programs in R.

Data accessibility. Data can be made available upon request.

Funding statement. This paper emerged as part of the *Predicting Ecological Change: Multi-Scale Analysis of Plankton Diversity and Dynamics* working group funded by the Canadian Institute for Ecology and Evolution (CIEE/ICEE). This is Kellogg Biological Station contribution no. 1718. R.A. was funded by Limnotip (O1LC1207A; Biodiversa) founded under the FP7 ERA-Net Scheme and the DFG-LakeRisk Project; W.A.N. and B.E.B. acknowledge support of NSERC discovery grants; A.G. is supported by the Canada Research Chair programme; D.A.V. acknowledges support of NSF DEB grant no. 1050803.

References

- Rocha MR, Gaedke U, Vasseur DA. 2011 Functionally similar species have similar dynamics. *J. Ecol.* **99**, 1453–1459. (doi:10.1111/j.1365-2745.2011.01893.x)
- Olden JD, LeRoy Poff N, Douglas MR, Douglas ME, Fausch KD. 2004 Ecological and evolutionary consequences of biotic homogenization. *Trends Ecol. Evol.* **19**, 18–24. (doi:10.1016/j.tree.2003.09.010)
- Houlahan JE *et al.* 2007 Compensatory dynamics are rare in natural ecological communities. *Proc. Natl Acad. Sci. USA* **104**, 3273–3277. (doi:10.1073/pnas.0603798104)
- Loreau M, de Mazancourt C. 2008 Species synchrony and its drivers: neutral and nonneutral community dynamics in fluctuating environments. *Am. Nat.* **172**, E48–E66. (doi:10.1086/589746)
- Haegeman B, Loreau M. 2011 A mathematical synthesis of niche and neutral theories in community ecology. *J. Theor. Biol.* **269**, 150–165. (doi:10.1016/j.jtbi.2010.10.006)
- Micheli F *et al.* 1999 The dual nature of community variability. *Oikos* **85**, 161–169. (doi:10.2307/3546802)
- Gonzalez A, Loreau M. 2009 The causes and consequences of compensatory dynamics in ecological communities. *Annu. Rev. Ecol. Syst.* **40**, 393–414. (doi:10.1146/annurev.ecolsys.39.110707.173349)
- Ives AR, Gross K, Klug JL. 1999 Stability and variability in competitive communities. *Science* **286**, 542–544. (doi:10.1126/science.286.5439.542)
- Pimm SL, Jones HL, Diamond J. 1988 On the risk of extinction. *Am. Nat.* **132**, 757–785. (doi:10.1086/284889)
- Inchausti P, Halley J. 2003 On the relation between temporal variability and persistence time in animal populations. *J. Anim. Ecol.* **72**, 899–908. (doi:10.1046/j.1365-2656.2003.00767.x)
- Cottingham KL, Brown BL, Lennon JT. 2001 Biodiversity may regulate the temporal variability of ecological systems. *Ecol. Lett.* **4**, 72–85. (doi:10.1046/j.1461-0248.2001.00189.x)
- Petchey OL, Gaston KJ. 2002 Functional diversity (FD), species richness and community composition. *Ecol. Lett.* **5**, 402–411. (doi:10.1046/j.1461-0248.2002.00339.x)
- Steiner CF, Long ZT, Krumsin JA, Morin PJ. 2005 Temporal stability of aquatic food webs: partitioning the effects of species diversity, species composition and enrichment. *Ecol. Lett.* **8**, 819–828. (doi:10.1111/j.1461-0248.2005.00785.x)
- Carpenter SR, Brock WA. 2006 Rising variance: a leading indicator of ecological transition. *Ecol. Lett.* **9**, 311–318. (doi:10.1111/j.1461-0248.2005.00877.x)
- Scheffer M *et al.* 2012 Anticipating critical transitions. *Science* **338**, 344–348. (doi:10.1126/science.1225244)
- Loreau M, de Mazancourt C. 2013 Biodiversity and ecosystem stability: a synthesis of underlying mechanisms. *Ecol. Lett.* **16**, 106–115. (doi:10.1111/ele.12073)
- Vasseur DA, Gaedke U. 2007 Spectral analysis unmasks synchronous and compensatory dynamics in plankton communities. *Ecology* **88**, 2058–2071. (doi:10.1890/06-1899.1)
- Keitt TH. 2008 Coherent ecological dynamics induced by large-scale disturbance. *Nature* **454**, 331–334. (doi:10.1038/nature06935)
- Keitt TH, Fischer J. 2006 Detection of scale-specific community dynamics using wavelets. *Ecology* **87**, 2895–2904. (doi:10.1890/0012-9658(2006)87[2895:DOSCDU]2.0.CO;2)
- Downing AL, Brown BL, Perrin EM, Keitt TH, Leibold MA. 2008 Environmental fluctuations induce scale-dependent compensation and increase stability in plankton ecosystems. *Ecology* **89**, 3204–3214. (doi:10.1890/07-1652.1)
- Vasseur DA, Gaedke U, McCann KS. 2005 A seasonal alternation of coherent and compensatory dynamics occurs in phytoplankton. *Oikos* **110**, 507–514. (doi:10.1111/j.0030-1299.2005.14006.x)
- Haegeman B, Etienne RS. 2008 Relaxing the zero-sum assumption in neutral biodiversity theory. *J. Theor. Biol.* **252**, 288–294. (doi:10.1016/j.jtbi.2008.01.023)
- Vasseur DA, Fox JW. 2007 Environmental fluctuations can stabilize food web dynamics by increasing synchrony. *Ecol. Lett.* **10**, 1066–1074. (doi:10.1111/j.1461-0248.2007.01099.x)
- Jeppesen E, Peder Jensen J, Søndergaard M, Lauridsen T, Landkildehus F. 2000 Trophic structure, species richness and biodiversity in Danish lakes: changes along a phosphorus gradient. *Freshw. Biol.* **45**, 201–218. (doi:10.1046/j.1365-2427.2000.00675.x)
- Straille D, Geller W. 1998 Crustacean zooplankton in Lake Constance from 1920 to 1995: Response to eutrophication and re-oligotrophication. *Adv. Limnol.* **53**, 255–274.
- Sommer U, Gliwicz ZM, Lampert W, Duncan A. 1986 The PEG-model of seasonal succession of planktonic event in fresh waters. *Arch. Hydrobiol.* **106**, 433–471.
- Torrence C, Compo GP. 1998 A practical guide to wavelet analysis. *Bull. Am. Meteorol. Soc.* **79**, 61–78. (doi:10.1175/1520-0477(1998)079<0061:APGTWA>2.0.CO;2)
- Fee EJ, Hecky RE. 1992 Introduction to the northwest Ontario lake size series (NOLSS). *Can. J. Fish. Aquat. Sci.* **49**, 2434–2444. (doi:10.1139/f92-269)
- Straille D, Adrian R. 2000 The North Atlantic Oscillation and plankton dynamics in two European lakes—two variations on a general theme. *Glob. Change Biol.* **6**, 663–670. (doi:10.1046/j.1365-2486.2000.00350.x)
- Pomati F, Matthews B, Jokela J, Schildknecht A, Ibelings BW. 2012 Effects of re-oligotrophication and climate warming on plankton richness and community stability in a deep mesotrophic lake. *Oikos* **121**, 1317–1327. (doi:10.1111/j.1600-0706.2011.20055.x)

31. Shurin JB *et al.* 2010 Environmental stability and lake zooplankton diversity: contrasting effects of chemical and thermal variability. *Ecol. Lett.* **13**, 453–463. (doi:10.1111/j.1461-0248.2009.01438.x)
32. Foufoula-Georgiou E, Kumar P. 1994 *Wavelets in geophysics*. San Diego, CA: Academic Press.
33. Benjamini Y, Yekutieli D. 2001 The control of the false discovery rate in multiple testing under dependency. *Ann. Stat.* **29**, 1165–1188. (doi:10.1214/aos/1013699998)
34. Vanni MJ, Temte J. 1990 Seasonal patterns of grazing and nutrient limitation of phytoplankton in a eutrophic lake. *Limnol. Oceanogr.* **35**, 697–709. (doi:10.4319/lo.1990.35.3.0697)
35. Chesson P. 2000 Mechanisms of maintenance of species diversity. *Annu. Rev. Ecol. Syst.* **31**, 343–366. (doi:10.1146/annurev.ecolsys.31.1.343)
36. Hubbell SP. 2001 *The unified neutral theory of species abundance and diversity*, vol. 79, pp. 96–97. Princeton, NJ: Princeton University Press.
37. Hebert PDN. 1982 Competition in zooplankton communities. *Annales Zoologici Fennici* **19**, 349–356.
38. Vanni MJ. 1986 Competition in zooplankton communities: suppression of small species by *Daphnia pulex*. *Limnol. Oceanogr.* **31**, 1039–1056. (doi:10.4319/lo.1986.31.5.1039)
39. Gilbert JJ. 1988 Suppression of rotifer populations by *Daphnia*: a review of the evidence, the mechanisms, and the effects on zooplankton community structure. *Limnol. Oceanogr.* **33**, 1286–1303. (doi:10.4319/lo.1988.33.6.1286)
40. Gouhier TC, Guichard F, Gonzalez A. 2010 Synchrony and stability of food webs in metacommunities. *Am. Nat.* **175**, E16–E34. (doi:10.1086/649579)
41. Keller W, Yan ND, Somers KM, Heneberry JH. 2002 Crustacean zooplankton communities in lakes recovering from acidification. *Can. J. Fish. Aquat. Sci.* **59**, 726–735. (doi:10.1139/f02-042)
42. Yan ND *et al.* 2008 Long-term trends in zooplankton of Dorset, Ontario, lakes: the probable interactive effects of changes in pH, total phosphorus, dissolved organic carbon, and predators. *Can. J. Fish. Aquat. Sci.* **65**, 862–877. (doi:10.1139/f07-197)
43. Peterson CH. 1975 Stability of species and of community for the benthos of two lagoons. *Ecology* **56**, 958–965. (doi:10.2307/1936306)
44. Fischer JM, Frost TM, Ives AR. 2001 Compensatory dynamics in zooplankton community responses to acidification: measurement and mechanisms. *Ecol. Appl.* **11**, 1060–1072. (doi:10.1890/1051-0761(2001)011[1060:CDIZCR]2.0.CO;2)