

Lawrence Berkeley National Laboratory

Molecular Biophys & Integ Bi

Title

Swapping the N- and C-terminal domains of human apolipoprotein E3 and AI reveals insights into their structure/activity relationship

Permalink

<https://escholarship.org/uc/item/7q72j8xf>

Journal

PLOS ONE, 12(6)

ISSN

1932-6203

Authors

Lek, Mark T
Cruz, Siobanth
Ibe, Nnejiuwa U
[et al.](#)

Publication Date

2017

DOI

10.1371/journal.pone.0178346

Peer reviewed

RESEARCH ARTICLE

Swapping the N- and C-terminal domains of human apolipoprotein E3 and AI reveals insights into their structure/activity relationship

Mark T. Lek¹✉, Siobanth Cruz¹✉, Nnejiuwa U. Ibe¹, Wendy H. J. Beck¹, John K. Bielicki², Paul M. M. Weers¹, Vasanthi Narayanaswami¹*

1 Department of Chemistry and Biochemistry, California State University Long Beach, Long Beach, California, United States of America, **2** Donner Laboratory, Lawrence Berkeley National Laboratory, Berkeley, California, United States of America

✉ These authors contributed equally to this work.

* vas.narayanaswami@csulb.edu



OPEN ACCESS

Citation: Lek MT, Cruz S, Ibe NU, Beck WHJ, Bielicki JK, Weers PMM, et al. (2017) Swapping the N- and C-terminal domains of human apolipoprotein E3 and AI reveals insights into their structure/activity relationship. PLoS ONE 12(6): e0178346. <https://doi.org/10.1371/journal.pone.0178346>

Editor: Ying-Mei Feng, Beijing Key Laboratory of Diabetes Prevention and Research, CHINA

Received: January 11, 2017

Accepted: May 11, 2017

Published: June 23, 2017

Copyright: © 2017 Lek et al. This is an open access article distributed under the terms of the [Creative Commons Attribution License](https://creativecommons.org/licenses/by/4.0/), which permits unrestricted use, distribution, and reproduction in any medium, provided the original author and source are credited.

Data Availability Statement: All relevant data are within the paper and its Supporting Information file.

Funding: Funded by VN: National Institutes of Health/ National Institute of General Medical Sciences (GM105561) <https://www.nigms.nih.gov/Pages/default.aspx>. The funders had no role in study design, data collection and analysis, decision to publish, or preparation of the manuscript VN & NUI: National Institutes of Health/ National Institute

Abstract

Apolipoprotein (apo) E3 and apoAI are exchangeable apolipoproteins that play a dominant role in regulating plasma lipoprotein metabolism. ApoE3 (299 residues) is composed of an N-terminal (NT) domain bearing a 4-helix bundle and a C-terminal (CT) domain bearing a series of amphipathic α -helices. ApoAI (243 residues) also comprises a highly helical NT domain and a less structured CT tail. The objective of this study was to understand their structural and functional role by generating domain swapped chimeras: apoE3-NT/apoAI-CT and apoAI-NT/apoE-CT. The bacterially overexpressed chimeras were purified by affinity chromatography and their identity confirmed by immunoblotting and mass spectrometry. Their α -helical content was comparable to that of the parent proteins. ApoE3-NT/apoAI-CT retained the denaturation profile of apoE3 NT domain, with apoAI CT tail eliciting a relatively unstructured state; its lipid binding ability improved dramatically compared to apoE3 indicative of a significant role of apoAI CT tail in lipid binding interaction. The LDL receptor interaction and ability to promote ABCA1-mediated cholesterol efflux of apoE3-NT/apoAI-CT was comparable to that of apoE3. In contrast, apoAI-NT/apoE-CT elicited an unfolding pattern and lipid binding ability that were similar to that of apoAI. As expected, DMPC/apoAI-NT/apoE-CT discoidal particles did not elicit LDLr binding ability, and promoted SR-B1 mediated cellular uptake of lipids to a limited extent. However, apoAI-NT/apoE-CT displayed an enhanced ability to promote cholesterol efflux compared to apoAI, indicative of a significant role for apoE CT domain in mediating this function. Together, these results indicate that the functional attributes of apoAI and apoE3 can be conferred on each other and that NT-CT domain interactions significantly modulate their structure and function.

of General Medical Sciences (GM008074) <https://www.nigms.nih.gov/Pages/default.aspx>. The funders had no role in study design, data collection and analysis, decision to publish, or preparation of the manuscript. PMMW: National Institutes of Health/ National Institute of General Medical Sciences (GM089564) <https://www.nigms.nih.gov/Pages/default.aspx>. The funders had no role in study design, data collection and analysis, decision to publish, or preparation of the manuscript.

Competing interests: The authors have declared that no competing interests exist.

Abbreviations: ΔG_D , free energy change of unfolding; $[GdnHCl]_{1/2}$, midpoint of guanidine hydrochloride denaturation; apoAI, apolipoprotein AI; apoE3, apolipoprotein E3; CT, C-terminal; DMPC, 1,2-Dimyristoyl-*sn*-glycero-3-phosphocholine; DTT, dithiothreitol; HDL, high density lipoprotein; LUV, large unilamellar vesicles; NT, N-terminal; PAGE, polyacrylamide gel electrophoresis; PBS, phosphate buffered saline; SDS, sodium dodecyl sulfate; SR-BI/SR-BII, Scavenger receptor class B type I/type II; TCEP, tris (2-carboxyethyl)phosphine.

Introduction

Apolipoprotein E3 (apoE3) and apolipoprotein AI (apoAI) are exchangeable apolipoproteins that are key players in cardiovascular disease predominantly due to their abilities to maintain and regulate plasma triglyceride and cholesterol homeostasis [1–4]. Both show broadly similar functional characteristics with an ability to bind and transport lipids as large lipoprotein complexes, which serve as a vehicle for other amphipathic and hydrophobic proteins, lipid and nucleic acid moieties in an aqueous environment such as the plasma. Nonetheless, there are critical differences between the two from a functional, molecular and physiological perspective.

ApoE is considered anti-atherogenic predominantly due to its ability to interact with lipoproteins and serve as a ligand for the low density lipoprotein receptor (LDLR) family of proteins, a process that leads to receptor mediated endocytosis and consequent lowering of atherogenic lipoproteins and their clearance from plasma. There is a body of evidence that established this view, with early studies demonstrating that apoE-null mice exhibit massive accumulation of remnant lipoproteins and develop severe atherosclerosis [5]; conversely, transgenic mice over expressing apoE manifest marked resistance to diet-induced hypercholesterolemia [6]. In addition, apoE's role gains prominence during atherosclerosis, when it participates in reverse cholesterol transport with macrophages secreting large amounts of lipid-free apoE [7], which in turn promotes cholesterol efflux and formation of high density lipoproteins (HDL) containing apoE. In the plasma, apoE resides predominantly on VLDL, chylomicron remnants and a sub species of HDL; in the brain, it is one of the major apolipoproteins that has been identified to play a crucial role in brain cholesterol metabolism, and is located on HDL-like particles [8].

ApoAI is considered atheroprotective primarily due to its role in promoting cholesterol efflux from macrophages and in modulating immune cell response [9]. In humans, apoAI deficiency is associated with coronary heart disease [10], and like apoE, transgenic mice overexpressing apoAI are protected against atherogenesis [11]. It is the main protein component of plasma HDL, the levels and functionality of which are associated with protection against atherosclerosis. ApoAI plays a critical role in HDL metabolism participating in the process of particle maturation such as activation of lecithin cholesterol acyltransferase leading to formation of cholesterylester core and in eventual delivery of cholesterylester via interaction with SR-BI located on sites such as liver and adrenal tissue. As a high-affinity lipid binding protein, its ability to promote ATP-binding cassette A1 (ABCA1)-mediated cholesterol and phospholipid efflux is associated with the lipid-free or lipid-poor form of apoAI, which results in biogenesis of the nascent HDL particle.

In humans the apoE gene is polymorphic with three major alleles: *APOE* ϵ 2, *APOE* ϵ 3, and *APOE* ϵ 4 coding for apoE2, apoE3, and apoE4 isoforms, respectively. These isoforms differ only at the amino acid at positions 112 and 158 in the NT domain: apoE3 contains a Cys and Arg, respectively at these locations, while apoE2 contains Cys, and apoE4 has Arg at both locations. While apoE3 is considered anti-atherogenic, apoE4 has been associated with cardiovascular disease and is a major risk factor for Alzheimer's disease [2, 12]. ApoE3 is a 34 kDa protein (299 residues) that is organized as a 22 kDa N-terminal (NT) domain (residues 1–191) with four amphipathic α -helices organized in an anti-parallel manner as a helix bundle, and, a 10 kDa C-terminal (CT) domain (residues 201–299) that also bears a series of amphipathic α -helices; the 2 domains are linked by a flexible protease sensitive hinge. X-ray crystal analysis of apoE3(1–191) reveal that the α -helices of the NT domain are arranged such that the hydrophobic residues of each helix are localized towards the interior, and the polar residues face the exterior aqueous environment [13]. The helix bundle is stabilized by hydrophobic interactions

(including aromatic stacking and leucine zippers) and intra- and inter-helix salt bridges. Together, they impose tremendous stability on this domain with the free energy of unfolding of 10–12 kcal/mol [14] and a mid-point of denaturation of ~ 2.5 M guanidine-HCl (GdnHCl) [15]. When associated with a lipid surface, helix 4 of the NT domain, which has an abundance of positively charged residues, serves as the high-affinity ligand for binding the LDLr along with Arg 172 [16]. The NT domain retains its stability, lipid binding capability and ability to interact with the LDLr in isolation. The helices of the CT domain have a high affinity for lipid binding and promote apoE3 oligomerization [17]. Within its CT domain, apoE3 also bears a potent ability to promote ABCA1-mediated cholesterol efflux, a feature that is under intense scrutiny for development of cholesterol-lowering peptide mimetic agents [18–22]. NMR analysis of a variant form of apoE3 bearing multiple mutations at the CT domain (F257A/W264R/V269A/L279Q/V287E) [23] also reveal a 4-helix bundle in the NT domain; in addition, it shows that the CT helices C1, C2 and C3 are wrapped around the helix bundle. While it is possible that the apposition of the CT domain with the NT domain is a consequence of the engineered mutations, it is not known if the interaction between the two domains alters the functional behavior of the individual domains. To obtain further insight into this interaction, a chimera was designed in the current study by swapping the CT tail with that from the structurally closely related apoAI.

Having evolved from a common ancestral gene, both apoE and apoAI show similar structural characteristics, characterized by Pro-punctuated tandem repeats of 22-mers [24] that form amphipathic α -helices [25, 26]. Although a high-resolution structure of apoAI is not available, there are several lines of evidence from a variety of biophysical studies [9] which suggests that the NT domain bears a 4-helix bundle, similar to apoE3. However, the NT domain of apoAI is not as stable as that of apoE3, with a free energy of unfolding of 2–4 kcal/mol, and a mid point of denaturation of ~ 1.0 M GdnHCl [14]. Further, truncation of residues 185–243 results in an NT domain that appears to be a double belt [27], as noted by X-ray analysis. The notion that the structure of the isolated NT domain may not resemble that in the context of the intact protein, raises questions about the dependency of this domain on the CT end of the protein from a functional perspective. Helices 1, 9 and 10 are believed to play a major role in high-affinity lipid binding of apoAI, while helix 10 has been reported to be involved in ABCA1-mediated cholesterol efflux capability of the protein. To gain further understanding of the interaction between these two domains, a second chimera was designed by swapping the CT tail of apoAI with that from apoE3. The objective of the current study was to examine the structure-function behavior of apoE3 and apoAI, each NT domain bearing the CT tail of the other.

Materials and methods

Design and generation of chimeric DNA constructs

Two chimeric apolipoproteins were generated (Fig 1): one bearing the NT domain of apoE3 and the CT domain of apoAI, referred to as apoE3-NT/apoAI-CT, and the other bearing the NT domain of apoAI and the small linker loop and the CT domain of apoE3, referred to as apoAI-NT/apoE-CT (the CT domain of apoE is shown without the isoform designation since the amino acid sequence is identical for the apoE isoforms in this domain). The two parent wild type and two chimeric constructs were housed in a pET-20b(+) vector containing ampicillin and chloramphenicol resistance genes for increased target expression and bear a hexa-His tag at the N-terminal end to facilitate purification. The codon-optimized sequence of apoE3-NT/apoAI-CT was generated by the overlap extension polymerase chain reaction method using overhang primers [28, 29] (details of the amplification step and ligation are provided in (Fig A and Table I in S1 File)).

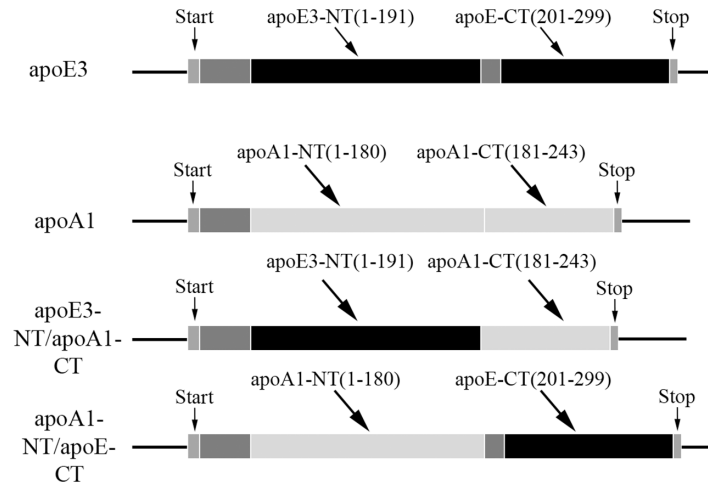


Fig 1. Schematic representation illustrating design and generation of apoE3-NT/apoA1-CT and apoA1-CT/apoE-NT chimeras. The NT and CT domains of the parent apoE3 (black) and apoA1 (light grey) are shown; the boundaries for the individual domains represent consensus from various labs: apoE3 NT domain (residues 1–191) and apoE CT domain (201–299), with residues 192–200 encompassing the protease sensitive linker loop; apoA1 NT domain (residues 1–185) and CT domain (residues 186–243). The apoE3-NT/apoA1-CT chimera encompassed residues 1–191 from apoE3 and 181–243 from apoA1, while apoA1-NT/apoE-CT chimera was composed of residues 1–180 from apoA1 and 192–299 from apoE. The start and stop sites of the coding region are indicated. A His-tag and protease cleavage sites (dark grey) were placed immediately upstream of the first residue. For sake of convenience and clarity, residue numbering of the parent proteins was retained for the chimeras.

<https://doi.org/10.1371/journal.pone.0178346.g001>

Overexpression and purification of chimeric and parent apolipoproteins

The pET-20b(+) plasmid bearing the coding sequence for apoE3, apoA1, apoE3-NT/apoA1-CT or apoA1-NT/apoE-CT was used to transform *E. coli* BL21-Gold (DE3) pLys competent cells (Agilent Technologies, Santa Clara, CA). The proteins were overexpressed, isolated and purified as described previously [30]. In select cases (apoA1 and apoA1-NT/apoE-CT), the affinity-purified proteins were subjected to gel filtration chromatography using Superdex 200 (Sigma-Aldrich, St. Louis, MO) packed in an XK-26/70 column (GE Healthcare Life Sciences, Piscataway, NJ) at a flow rate of 0.7 ml/min.

The purified proteins were quantified by UV-Vis spectrometry using a NanoDrop 2000 UV-Vis spectrophotometer (Thermo Scientific, Wilmington, DE) using the following molar extinction coefficient at 280 nm: apoE3-NT/apoA1-CT: 30,940; apoA1-NT/apoE-CT: 47,440; apoE3: 45,950; and, apoA1: 33,920 $M^{-1}cm^{-1}$ or by the D_c protein assay kit (Bio-Rad Laboratories Company, Hercules, CA). The purity of the samples was assessed by SDS-PAGE using 4–20% acrylamide gradient Tris-glycine gels (Invitrogen Life Technologies, Carlsbad, CA) under reducing or non-reducing conditions. For Western blot analysis, HRP conjugated polyclonal goat anti-human apoA1 or anti-human apoE antibody (Abcam Company, Cambridge, MA) was employed at a 1:3000 or 1:4000 dilution, respectively. The bands were visualized using Amersham ECL Plus Western Blotting Detection Reagent (GE Healthcare Life Sciences, Piscataway, NJ).

Secondary structural analysis

The secondary structure of the chimeric proteins was assessed by far UV circular dichroism (CD) spectroscopy. The details of the CD experiments are described in S1 File.

Guanidine-HCl-induced unfolding

GdnHCl induced denaturation studies were performed to determine protein stability and unfolding pattern, and the percent maximal change was calculated from the ellipticity value at 222 nm as described previously [31]. About 0.2 mg/ml protein was incubated for 16 h at 24°C in the presence of increasing concentration (0 to 6 M) of ultra-pure grade GdnHCl (MP Bio-medicals, Solon, OH) and 5x molar excess of tris(2-carboxyethyl)phosphine (TCEP) in 10 mM ammonium bicarbonate, pH 7.4. The midpoint of denaturation (the concentration of GdnHCl required to cause a 50% decrease in the maximal change) $[GdnHCl]_{1/2}$ was determined for each construct.

Fluorescence spectroscopy

The binding of 1-anilinonaphthalene-8-sulfonate (ANS) to the chimeric and parent proteins was monitored by following the fluorescence emission spectra of 250 μ M ANS in 10 mM ammonium bicarbonate, pH 7.4 in the absence or presence of 5 μ M protein at 24°C. Fluorescence measurements were made in a Perkin-Elmer spectrofluorometer (model LS 50B). An average of 3 scans were recorded for 3 freshly folded samples, at a scan speed of 100 nm/min. The excitation wavelength was set at 395 nm, and the emission spectra were scanned between 400 and 600 nm (excitation and emission slit widths at 6 nm).

Lipid binding assay

The ability of the chimeric apolipoproteins to bind lipids and cause vesicle solubilization was determined as described previously [32] using multilamellar vesicles (MLVs) of 1,2-Dimyristoyl-*sn*-glycero-3-phosphocholine (DMPC) (Avanti Polar Lipids, Alabaster, AL), with slight modifications (details provided in [S1 File](#)). The time required for initial absorbance to decrease by 50% ($T_{1/2}$) and the rate constant (k , reciprocal of $T_{1/2}$) were determined for the chimeras and the parent proteins.

Preparation of DMPC- and DMPC/DiI-bound complexes of chimera or parent proteins is described in [S1 File](#).

LDLr binding assay

The ability of the lipid-associated chimeras to bind to the soluble LDLr with a c-Myc epitope was assessed using a co-immunoprecipitation assay as described previously [32, 33] with 0 or 10 μ g DMPC/chimera complexes, 10 μ g of sLDLr, 2 mM Ca^{+2} in PBS. ApoE was detected by Western blot using HRP-conjugated polyclonal apoE antibody. A replica experiment was conducted wherein an anti-c-Myc antibody (9E10) was utilized.

Cellular uptake of DMPC/chimera particles by glioblastoma cells

Cellular uptake of DMPC-bound complexes of chimera was determined using human glioblastoma cell line A-172 [34] (details provided in [S1 File](#)). Human brain A-172 glioblastoma cells were obtained from ATCC (Manassas, VA).

Cholesterol efflux assay

The ability of apolipoproteins to mediate cellular cholesterol efflux was assessed using J774 mouse macrophages. Cells were treated with and without a cAMP analog to modulate ABCA1 expression as described previously [19]; apolipoprotein acceptors were used in lipid-free form (details provided in [S1 File](#)).

Statistical analysis

Where appropriate, data were expressed as mean \pm SD of at least three independent experiments and statistical analyses performed using Student's t-test.

Results

Design and characterization of chimeric apolipoproteins

To determine the structural basis of the functional differences between the NT and CT domains of apoE3 and apoAI, chimeric apolipoproteins were generated by swapping the CT domain of each other, Fig 1. The splice sites broadly aligned with the limits of the domain organization of each apolipoprotein. The DNA construct of apoE3-NT/apoAI-CT codes for residues 1–191 of apoE3 immediately followed by residues 181–243 of apoAI (Fig A and details in S1 File), while that of apoAI-NT/apoE-CT codes for residues 1–180 of apoAI followed by 192–299 of apoE3. In both cases the nucleotide sequence was verified to confirm the presence of the desired segments of the parent proteins in the spliced DNA.

SDS-PAGE analysis of the chimeric and their parent proteins under reducing conditions, Fig 2, Panel A, revealed molecular masses of ~32 and 35 kDa for apoE3-NT/apoAI-CT and apoAI-NT/apoE-CT, respectively, (expected masses: 30,975 and 34,864 Da, respectively). This suggests that the chimeras contain the designed individual components of the parent apolipoproteins. The molecular masses of apoE3 and apoAI were ~ 34 and 29 kDa, respectively. Western blot analysis using mouse HRP-conjugated apoE polyclonal antibody, Fig 2, Panel B, Left, yielded robust bands at ~32 and 35 kDa for apoE3-NT/apoAI-CT and apoAI-NT/apoE-CT, respectively, confirming the presence of apoE3 epitopes in both chimeras. The absence of a band for apoAI confirms that the apoE polyclonal antibody does not cross react with apoAI.

When mouse HRP-conjugated apoAI polyclonal antibody was used, Fig 2, Panel B, Right, a strong band of ~ 35 kDa was noted for apoAI-NT/apoE-CT, confirming the presence of apoAI epitope in this chimera. A band (albeit less robust) was noted for apoE3-NT/apoAI-CT, which confirms the presence of the apoAI epitope in this chimera as well. Taken together, the nucleotide sequence, SDS-PAGE and Western blot confirm the presence and correct splicing of the desired swapped domain components in the two chimeras, and the purity of the preparations.

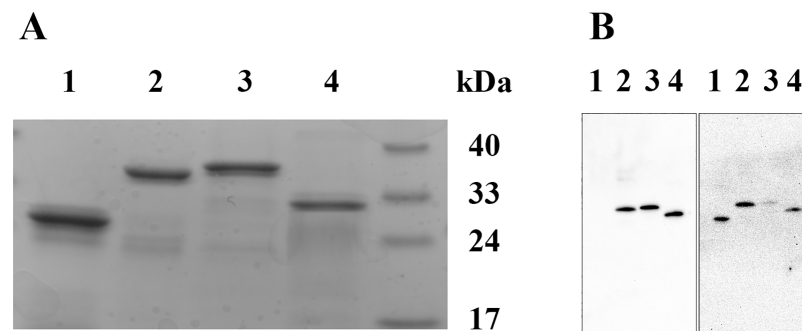


Fig 2. Characterization of chimeric apolipoproteins. Panel A. SDS-PAGE analysis of the chimeric apolipoproteins. Electrophoresis of chimeric and parent proteins (20 μ g protein) was carried out using a 4–20% acrylamide gradient Tris-glycine gel under reducing conditions in the presence of BME. Panel B. Western blot analysis of chimeras (0.5 μ g protein) using mouse HRP-conjugated apoE polyclonal antibody (Left) or apoAI antibody (Right). Lane assignments are as follows: Lane 1, apoAI; Lanes 2, apoAI-NT/apoE-CT; Lanes 3, apoE3; Lanes 4, apoE3-NT/apoAI-CT.

<https://doi.org/10.1371/journal.pone.0178346.g002>

Secondary and tertiary structural analysis, GdnHCl-induced unfolding and cross-linking studies

CD spectroscopy was carried out to assess the secondary structure of the chimeras. The ellipticity of both chimeras was measured in the far UV range and compared with those of the parent proteins (**Fig B in S1 File**); both reveal profiles with troughs at 208 and 222 nm, a signature feature of an α -helix, similar to that noted for the parent proteins. The α -helical content for both apoE3-NT/apoAI-CT and apoAI-NT/apoE-CT was 45%, while that for apoE3 and apoAI was \sim 40%, the differences noted were within the error limit of CD measurements and variations between preparations.

GdnHCl-induced denaturation was carried out to examine the effect of appending the CT tail of one on the NT domain of the other apolipoprotein and to obtain an estimate of the overall protein stability, in comparison with that of the parent proteins under reducing conditions, **Fig 3, Panels A and B**. ApoAI shows a single transition with a midpoint of denaturation (concentration of GdnHCl required to cause a 50% decrease in the maximal change, $[GdnHCl]_{1/2}$) of \sim 1.2 M. The unfolding behavior of the chimeric apoAI-NT/apoE-CT ($[GdnHCl]_{1/2}$ of \sim 1.3 M) was broadly similar to that of apoAI. In contrast apoE3 shows a biphasic denaturation profile [35, 36], with the first transition attributed to the unfolding of the CT domain ($[GdnHCl]_{1/2}$ of \sim 0.75 M) followed by that of the NT domain ($[GdnHCl]_{1/2}$ of \sim 2.50 M). The denaturation profile of apoE3-NT/apoAI-CT showed a biphasic pattern as well; however, the initial transition showed a lower $[GdnHCl]_{1/2}$ of \sim 0.1 M, reflective of a segment highly susceptible to denaturation, likely corresponding to the unfolding of apoAI CT tail; the second transition showed a strong overlap corresponding to the unfolding of apoE3 NT domain ($[GdnHCl]_{1/2}$ of \sim 2.6 M GdnHCl). This suggests that the individual domains of the apoE3-NT/apoAI-CT chimera recapitulate their fold in the context of their parent proteins. Under non-reducing conditions, the unfolding behavior of both chimeras did not alter significantly from that noted under reducing conditions (data not shown).

To determine if swapping the CT domains altered the overall fold or exposure of hydrophobic core segments of the protein, ANS fluorescence emission was monitored, **Fig 3, Panel C**. ANS is an amphiphilic probe that fluoresces upon binding to hydrophobic pockets or cores in proteins leading to changes in the wavelength of maximal fluorescence emission (λ_{max}) and to an enhancement in emission intensity [37]. In buffer, ANS was relatively non-fluorescent with

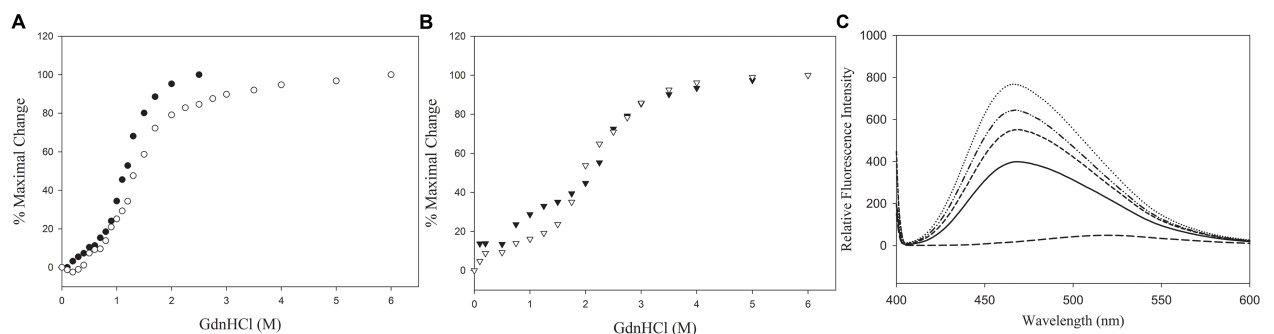


Fig 3. Unfolding and folding behavior of chimeras. Panels A and B. GdnHCl-induced denaturation profiles of apoAI-NT/apoE-CT (**A**) and apoE3-NT/apoAI-CT (**B**). The samples (0.2 mg/ml) were incubated with increasing concentration of GdnHCl and 5x molar excess of TCEP for 16 h at 24°C. The ellipticity value at 222 nm was measured and protein unfolding plotted as % maximal change in which 100% represents completely unfolded protein. ApoAI (filled circles); apoAI-NT/apoE-CT (open circles); apoE3 (closed inverted triangles); and apoE3-NT/apoAI-CT (open inverted triangles). **Panel C.** ANS fluorescence emission spectra of chimeric and parent proteins. About 50 μ g of each protein sample was excited at 395 nm and the emission spectra were recorded at 100 nm/min from 400 to 600 nm. ApoAI (—); apoAI-NT/apoE-CT (·····); apoE3 (-----); apoE3-NT/apoAI-CT (·····) and ANS (____).

<https://doi.org/10.1371/journal.pone.0178346.g003>

a λ_{max} of 519 nm; in the presence of apoE3, a large increase in ANS fluorescence emission was noted, with a λ_{max} of ~467 nm, indicative of a folded state; swapping its CT domain with that from apoAI resulted in a small increase in intensity by ~18%, with the λ_{max} remaining at ~467 nm. In the case of apoAI as well, a large increase in intensity compared to ANS alone was noted, which was accompanied by a blue shift to 468 nm; upon swapping the CT domain of apoAI with that from apoE, the λ_{max} remains at 466 nm while the intensity increased further by almost 2-fold. The increase was likely due to the presence of the structured segment of apoE CT tail (107 residues), although we cannot exclude the possibility of the contribution of the larger surface area it offers compared to apoAI CT tail (62 residues).

Lipid binding characteristics

The lipid binding ability of the chimeras were compared to that of the parent proteins using the DMPC vesicle solubilization assay [32]. This assay involves incubation of apolipoproteins with MLVs prepared with DMPC at 1:1 ratio (w/w). At the transition temperature of DMPC (23.9°C), apolipoproteins typically convert the vesicular structures (~200 nm diameter) to small discoidal complexes (10–20 nm diameter), which is observed as a decrease in absorbance due to light scattering at 325 nm. Fig 4 shows a plot of change in absorbance at 325 nm as a function of time. ApoAI elicits a rapid decrease in absorbance with a $T_{1/2}$ of ~260 s and k value $3.6 \times 10^{-3} \text{ s}^{-1}$ in agreement with previous studies carried out under similar conditions [38]. In contrast, apoE3 shows a very poor ability to solubilize the vesicles, with $T_{1/2}$ of >1800 s. Such behavior by apoE3 and apoAI is has been noted by us and other researchers previously [32, 38, 39]. Interestingly, the $T_{1/2}$ and k value for apoE3-NT/apoAI-CT chimera were 298 ± 3 s and

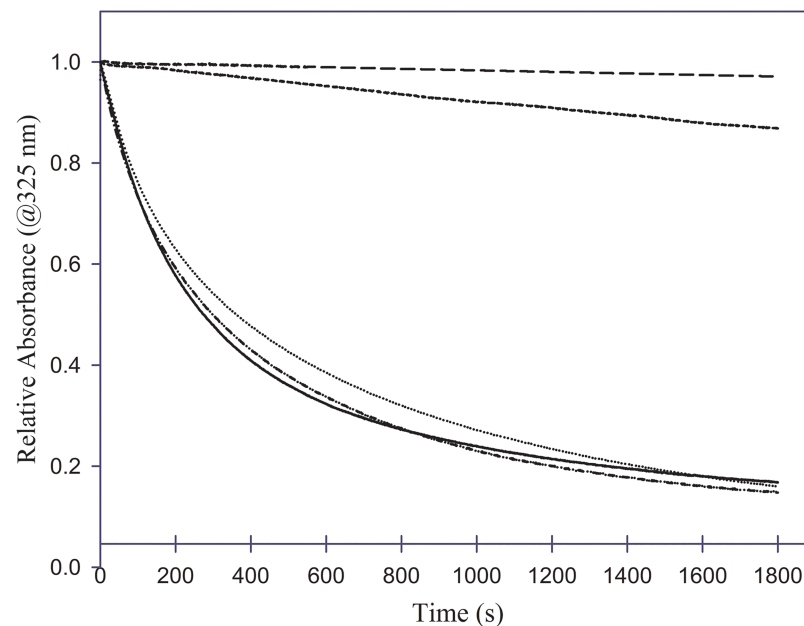


Fig 4. Phospholipid vesicle solubilization capability of chimeras. About 125 μg of DMPC MLVs were equilibrated in 400 μl of PBS in a cuvette at 23.7°C in a Peltier-controlled spectrophotometer. Vesicle solubilization was initiated by addition of 125 μg of apolipoprotein, mixed rapidly and the change in absorbance at 325 nm measured for 30 min. Data were normalized to initial absorbance immediately following addition of protein. ApoAI (—); apoAI-NT/apoE-CT (.....); apoE3 (-----); apoE3-NT/apoAI-CT (-.-.-.-.); and DMPC vesicles alone in the absence of apolipoproteins (____).

<https://doi.org/10.1371/journal.pone.0178346.g004>

Table 1. Characterization of DMPC/chimera particle size and protein/lipid composition.

DMPC complex	Lipid/protein ratio (m/m)	Approximate Molecular mass (Da)	# of proteins/particle
ApoAI	40:1	200,000	3
ApoAI-NT/apoE-CT	100:1	200,000	2
ApoE3	70:1	300,000	4
		500,000	6
ApoE3-NT/apoAI-CT	50:1	200,000	3
		500,000	8

<https://doi.org/10.1371/journal.pone.0178346.t001>

$3.3 \times 10^{-3} \pm 3.2 \times 10^{-5} \text{ s}^{-1}$, respectively, which is comparable to that apoAI; and those for apoAI-NT/apoE-CT are $\sim 319 \pm 90 \text{ s}$ and $3.3 \times 10^{-3} \pm 1.1 \times 10^{-3} \text{ s}^{-1}$, respectively.

It should be noted that prolonged overnight incubation of apoE3 with DMPC vesicles under these conditions eventually causes transformation of vesicular to discoidal structures, with the assumption that the entire apoE3 molecule interacts with phospholipids. These DMPC-bound complexes are discoidal in shape and are referred to as reconstituted HDL; they recapitulate all the functional features of native apoE3 in terms of their ability to bind and interact with the LDLr and facilitate cellular uptake of lipoprotein particles. The lipid/protein ratios, approximate molecular mass of the DMPC complexes, and estimated number of proteins per particle are shown in Table 1. In general, non-denaturing PAGE analysis shows that apoE3 forms larger reconstituted complexes compared to apoAI, Fig C in S1 File; complexes bearing the NT domain of apoE3 resulted in two bands (200,000–300,00 Da band with 3–4 proteins/particle, and ~500,000 Da band with 6–8 proteins/particle. In contrast, those with the NT domain of apoAI resulted in smaller bands of ~ 200,000 Da mass with 2–3 proteins/particle.

LDLr binding ability and cellular uptake

Blacklow and colleagues devised a convenient method to assess the LDLr binding capability of lipoproteins using a soluble extracellular segment of the receptor [33]. The soluble LDLr (sLDLr) used in our study is composed of consecutive LA modules LA3-LA6 bearing a c-Myc tag that displays all the functional features of receptor-ligand binding. We have used this construct previously to capture the LDLr/rHDL complex [40, 41] and detect apoE via Western blot analysis. We deployed the same approach to initially assess the functionality of the lipid-associated forms of the chimeras in terms of their ability to recognize and bind the sLDLr. Western blot analysis using anti-c-Myc antibody to detect the presence of LDLr showed a band in all samples incubated with LDLr, Fig 5, confirming the presence of the receptor in all incubations. The absence of a band for apoE3 incubated without LDLr confirmed no cross reactivity between the anti-c-Myc-agarose antibody with apoE3. Of the two chimeras generated, only that which had the NT domain of apoE3 (apoE3-NT/apoAI-CT) displayed sLDLr-binding ability, as expected. This observation indicated that the presence of the CT domain of apoAI did not alter the ability of the apoE3 NT domain to bind lipid and attain the proper conformation to recognize and dock with the ligand binding module of the LDLr. It is known that even isolated apoE3 NT domain is capable of binding the LDLr in its lipid-bound state. Our findings further showed that the nature of the CT tail is irrelevant for the LDLr binding capability of apoE3. The apoAI-NT/apoE-CT chimera does not elicit any sLDLr binding ability.

Subsequently, the ability of the chimeras to be internalized by A-172 glioblastoma cells was evaluated. Initial experiments were aligned with the sLDLr binding results above, wherein apoE-facilitated cellular uptake was followed by immunofluorescence using 1D7 and 3H1

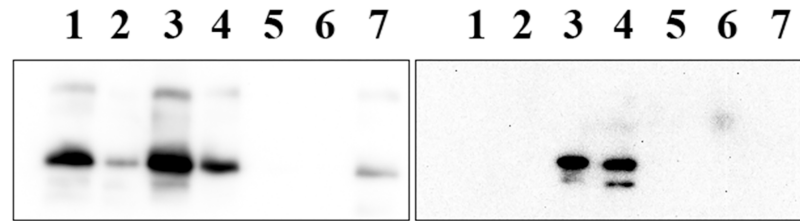


Fig 5. LDLr binding ability of chimeras. DMPC/chimera complexes (10 μ g protein) were incubated with 10 μ g of sLDLr, followed by co-IP with anti-c-Myc-agarose. sLDLr-bound apoE was detected by Western blot using HRP-conjugated polyclonal apoE antibody (*Top*); the lane assignments are: Lane 1, apoAI; lane 2, apoAI-NT/apoE-CT; lane 3, apoE3; lane 4, apoE3-NT/apoAI-CT; lane 5, apoAI added in the absence of sLDLr; lane 6, apoE3 added in the absence of LDLr; lane 7, LDLr alone in the absence of added proteins. A replica experiment was conducted wherein an anti-c-Myc antibody (9E10) was utilized to identify the presence of LDLr in each reaction (*Bottom*).

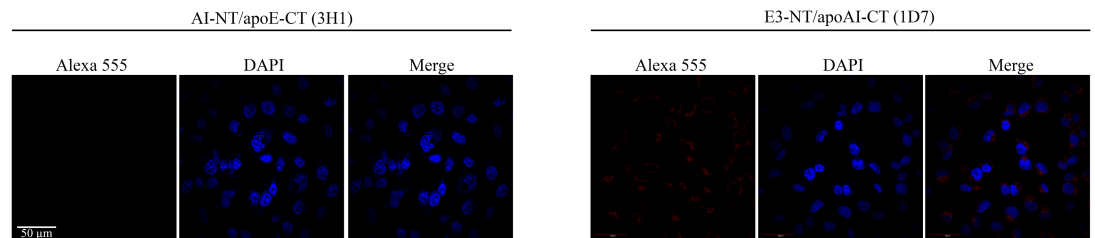
<https://doi.org/10.1371/journal.pone.0178346.g005>

monoclonal antibody, to detect the NT and CT domains of apoE, respectively, [Fig 6A](#). DMPC/apoE3-NT/apoAI-CT chimera was internalized in a robust manner, showing punctate perinuclear endocytic vesicles. No visible uptake of DMPC/apoAI-NT/apoE-CT was observed, in agreement with the lack of the NT domain of apoE3 that houses the LDLr and proteoglycan binding sites. While this strongly suggested the involvement of the LDLr in the case of apoE3-NT containing particles, we cannot rule out the possibility of the involvement of HDL receptors such as SR-B1 in the binding and uptake of lipids. Therefore, in a complementary approach, we followed the uptake by labeling the lipid component of the lipoprotein complexes by using DMPC/DiI/chimeras or DMPC/DiI/parents in the absence and presence of SR-BI/SR-BII antibody, [Fig 6B](#). DiI fluorescence was noted to a limited extent in cells treated with lipid-associated apoAI or apoAI-NT/apoE-CT; in the presence of SR-BI/SR-BII antibody, the intracellular DiI fluorescence was abolished. In contrast, cells treated with DMPC/DiI/apoE3 and DMPC/DiI/apoE3-NT/apoAI-CT displayed significant intra-cellular DiI fluorescence. In the presence of SR-BI/SR-BII antibody, the DiI fluorescence appeared to have decreased to a limited extent.

Cholesterol efflux

Lastly, the relative ability of the lipid-free chimeras to promote ABCA1-mediated cholesterol efflux was examined. ABCA1 is a member of the ATP-binding cassette (ABC) family of transmembrane transporters, which mediates active transport of cholesterol. It bears phospholipid translocase activity that leads to simultaneous efflux of phospholipid and cholesterol to lipid-free or lipid-poor apoAI [42] leading to HDL biogenesis. In the current assay, cholesterol loaded J774 cells were treated with or without cpt-cAMP to modulate expression of ABCA1, followed by treatment with the lipid-free apolipoproteins. In general, both chimeras retained the ability to mediate cholesterol efflux in an ABCA1 dependent manner, [Fig 7, Panel A](#); the presence of β -mercaptoethanol (BME) did not have a major influence on the efflux ability, [Fig 7, Panel B](#). Interestingly, apoAI-NT/apoE-CT appeared to bear a greater capacity to mediate efflux, compared to either apoE3-NT/apoAI-CT or both parent proteins. With both chimeras, the efflux ability was dose dependent, [Fig 7, Panel C](#), and increased as a function of time, [Fig 7, Panel D](#). The K_m values for apoE3-NT/apoAI-CT and apoAI-NT/apoE-CT are 20 and 32 μ g/mL, respectively, and the corresponding V_{max} values are 17 and 19% / 4h. The K_m values of the chimeras are 6–7 fold higher compared to the parent proteins, while the V_{max} is twice as high compared to apoAI or apoE3 reported previously [19, 43]. This is indicative of a lower

A



B

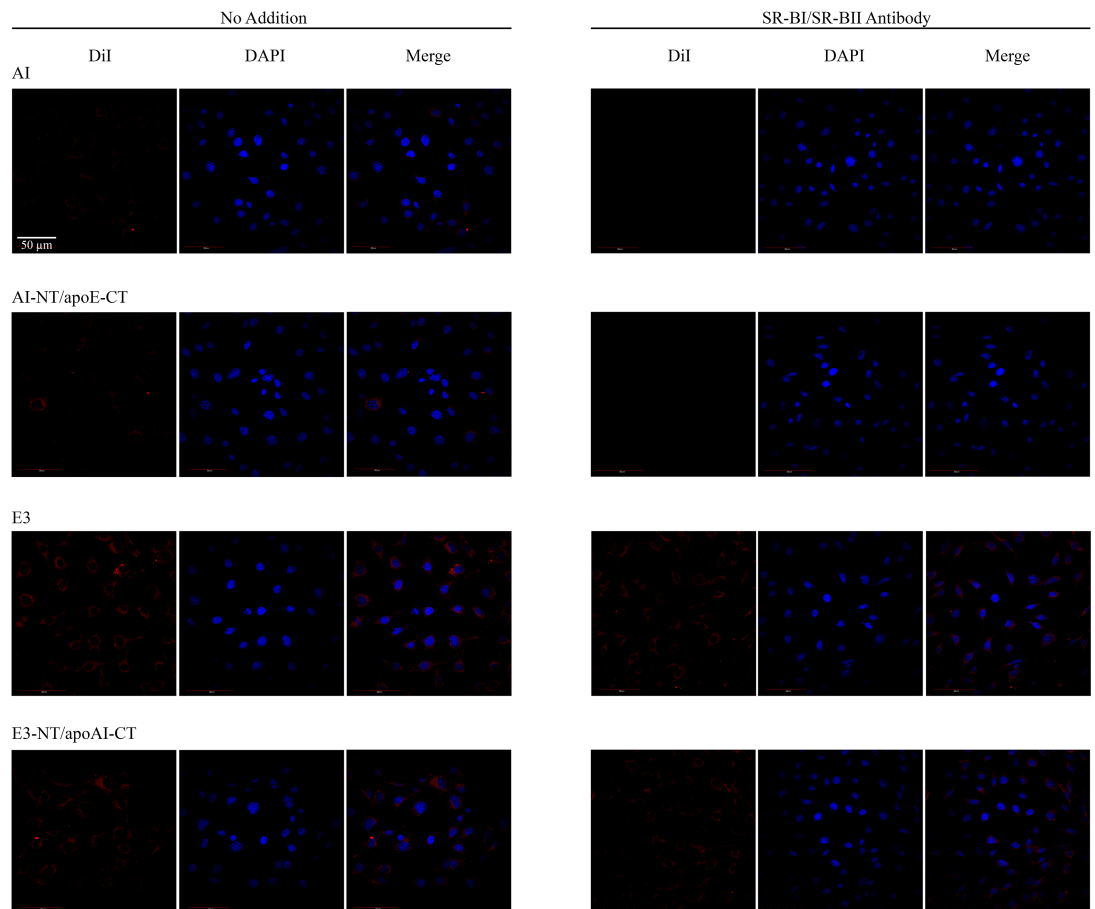


Fig 6. Uptake of rHDL/chimera by glioblastoma cells. Panel A. Uptake of apoE component of rHDL/chimera monitored by immunofluorescence. DMPC/chimera complexes (10 $\mu\text{g/ml}$) were incubated with glioblastoma cells for 2h at 37°C. Cellular uptake of the lipoprotein particles was followed by immunofluorescence under a confocal laser scanning microscope using monoclonal antibodies against apoE CT domain (3H1) or NT domain (1D7) and Alexa555-labeled secondary antibody. **Panel B. Uptake of lipid component of rHDL/Dil/chimera monitored by direct fluorescence.** The chimeric and parent proteins were reconstituted with DMPC and Dil as described under S1 File. DMPC/Dil/chimera or parent complexes (0.5 $\mu\text{g/ml}$) were incubated with cells as above in the absence or presence of SR-B1/SR-BII antibody (1:500 dilution) and cellular uptake of the lipoprotein particles followed by direct fluorescence at 559 nm. The cells were stained with DAPI to visualize the nuclei. The scale bar represents 50 μm .

<https://doi.org/10.1371/journal.pone.0178346.g006>

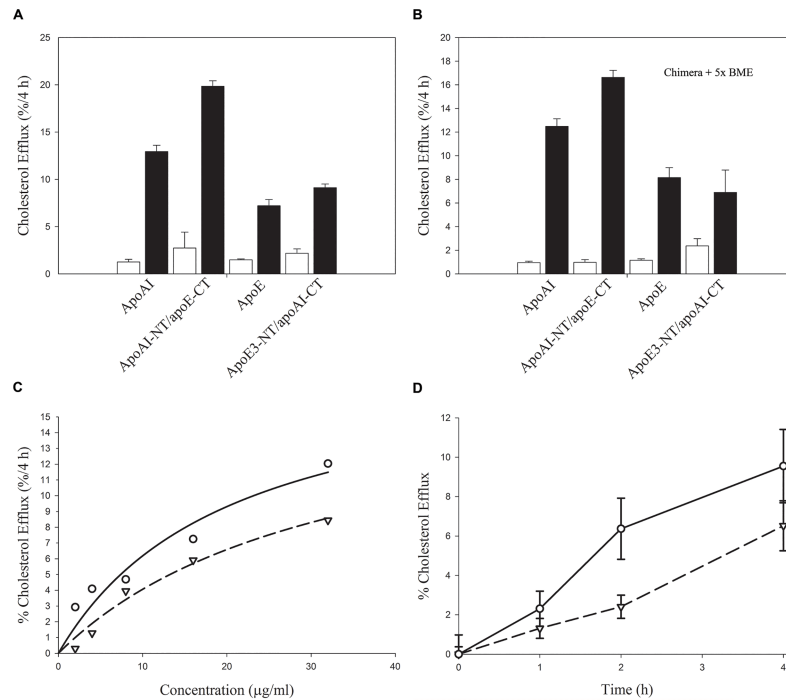


Fig 7. Chimeric apolipoproteins mediated cholesterol efflux from J774 macrophages. Panels A and B. J774 macrophages were labeled with [³H]cholesterol, and treated in the absence (open bars) or presence (closed bars) of cAMP. Lipid-free chimeras or parent apolipoproteins (10 μg/ml) were added to cells in serum-free RPMI-1640 medium, and amount of cholesterol efflux determined at 4 h. Conditions of time and dose were within a linear response range to allow for potential differences (if any) to be observed with and without treatment of acceptors in the absence (**Panel A**) or presence (**Panel B**) of 5x molar excess of BME. **Panel C.** Dependence of cholesterol efflux on chimera concentration. The cells were treated with the indicated concentrations of the chimeras for 4 h. **Panel D.** Kinetics of chimera-mediated cholesterol efflux. Chimera-mediated cholesterol efflux was followed at the indicated time points using 32 μg/μl of each protein. Values are means ±SD from triplicate determinations within a single experiment representative of two. For **Panel C** and **Panel D**, apoE3-NT/apoAI-CT (open inverted triangles); apoAI-NT/apoE-CT (open circles).

<https://doi.org/10.1371/journal.pone.0178346.g007>

specificity for the chimeras, but suggest the potential to operate at higher concentrations at which apoAI and apoE would have reached saturation.

Discussion

The strategy of generating chimeras has been adopted widely in protein engineering to examine structure-function relationships and to define regions within a domain or at the subdomain level in closely related proteins. In the case of the family of exchangeable apolipoproteins, the presence of amphipathic α -helices is a defining feature among the members; from a structural perspective the amphipathic α -helices offer the ability for these proteins to exist in a lipid-free or lipid associated state by undergoing a reversible conformational change, for which lipids are believed to be triggers. From a functional perspective, they serve a variety of functions such as interaction with lipids, lipoproteins and lipoprotein receptors, facilitation of cholesterol efflux promoted by membrane transporters and as enzyme activators. The focus of this study was on apoE3 and apoAI, two key members of the exchangeable apolipoprotein family; the former bears two defined NT and CT domains; the latter also has an NT and CT domain, though the CT domain may remain relatively unstructured at low concentrations (lower than that used in this study), thereby deviating from the conventional definition of a domain. Despite their

broad structural similarity, there are significant differences in functionality between the two proteins: whereas apoE3 can bind and mediate cellular uptake of lipoproteins via the LDLr, apoAI lacks this ability. Conversely, whereas apoAI mediates phospholipid vesicle solubilization to yield discoidal particles very rapidly, apoE3 is relatively slow in its ability to cause this transformation, though it would do so given time and under specified experimental conditions. Both proteins show significant ability to promote ABCA1-mediated cholesterol efflux. Our objective was to understand the interaction between and influence of the domains on each other in the two proteins. To achieve this, the CT domain or tail of each protein was swapped to generate apoE3-NT/apoAI-CT and apoAI-NT/apoE-CT.

Design of chimeric apoE3-NT/apoAI-CT and apoAI-NT/apoE-CT

The splice site for apoE3 was determined based on consensus from a series of biochemical and biophysical studies involving susceptibility to protease cleavage, protein unfolding studies using chemical and heat denaturation, kinetic and equilibrium studies of association-dissociation behavior of apoE [44] and, C-terminal truncation analysis [14, 45, 46]; in addition, it was guided by the high resolution X-ray structure of residues 1–191 [13], NMR structure of 1–183 [47] and, to a limited extent from the NMR analysis of an engineered form of apoE3 (F257A/W264R/V269A/L279Q/V287E) [23] that was generated to obtain a monomeric protein for structural analysis. Taken together, apoE3 NT domain was defined to encompass residues 1–191, and the CT domain to encompass residues 201–299 and the protease sensitive loop residues 192–200.

For apoAI, the splice site was determined broadly based on the boundaries defined by HDX studies on lipid free apoAI carried out by other researchers [48] due to lack of availability of a high resolution structure of the full length protein. X-ray analysis of apoAI truncated at the CT end to yield 1–185 [49] or at the NT end to yield 44–243 [50] provided limited guidance, both suggesting an organization resembling the lipid-associated conformation of the protein in a discoidal complex with phospholipids. Further, truncation at both ends appears to yield a stable helix bundle conformation [51]. The rationale for using HDX data is that it was obtained by non-invasive means and the studies were performed at relatively low concentrations (50–60 $\mu\text{g}/\text{ml}$) wherein the protein was monomeric, comparable and relevant to that used in the current study. At concentrations $> 1\text{mg}/\text{ml}$, apoAI self-associates and acquires increased secondary structure [52, 53], presumably due to adoption of helical structure by the CT domain. Taken together, the NT domain was broadly defined to encompass residues 1–180, and the CT domain residues 181–243.

Biophysical analysis of apoE3-NT/apoAI-CT and apoAI-NT/apoE-CT

Secondary structural analysis revealed that the chimeras are predominantly α -helical, similar to the parent proteins. In both cases, the NT domain appears to play a dominant role in driving the overall fold of the protein. The NT domain of apoE3 bears a helix bundle that is unusually stable among apolipoproteins, showing resistance to GdnHCl-induced unfolding, with a ΔG of unfolding of ~ 10 kcal/mol [14]. Typically, apoAI and other exchangeable apolipoproteins, including insect apolipoporphins, unfold with a $[\text{GdnHCl}]_{1/2}$ of ~ 1 M or less, and a ΔG of unfolding of 1–4 kcal/mol. The single transition elicited by apoAI makes it difficult to dissect out the differential folding of its NT and CT domains. By appending the CT tail of apoAI to apoE3 NT domain, which has a much higher stability with a mid point of ~ 2.5 M, the unfolding of apoAI CT tail could be dissected, revealing a less structured state with a low mid point of denaturation (~ 0.1 M GdnHCl). At the concentration used for the unfolding studies (~ 0.2 mg/ml) it is possible that a small fraction of apoAI exists as a dimer, in which case, the low

values could also represent dissociation of dimeric CT tail. ANS fluorescence analysis further confirmed the presence of less structured CT tail; appending the CT domain of apoE3 to apoAI NT domain, resulted in a much larger increase in ANS fluorescence emission (~100%) compared to that seen when appending the CT tail of apoAI to apoE3 NT domain (~18%). This suggests that the CT domain of apoE3 is far more structured than that of apoAI, a conclusion also supported by the GdnHCl-induced unfolding that revealed a small shift towards a more stable overall structure. The structural flexibility of apoAI CT domain bears direct relevance to its tendency to seek stability with higher lipid-binding propensity compared to apoE3 as discussed later.

Currently available information about apoAI suggests that the CT tail of apoAI bears the propensity to adopt an α -helical structure based on algorithms for secondary structural predictions. This predisposition leads to reference of apoAI CT tail as an additional domain despite its unfolding behavior, which shows a single transition, a characteristic feature of a one-domain protein. The trigger for the transition from flexible to α -helical structure may include: (i) increased protein concentration, which has been shown to lead to apoAI oligomerization, increase in α -helical content and increased cross-linking [48, 52, 53]; (ii) the presence of lipids, which induces helix formation, consistent with the inverse correlation between protein stability and lipid binding ability: unstructured segments seek stability by interacting rapidly with lipids [54]; (iii) truncation of apoAI at the N-terminal end by removing residues 1–43; this resulted in the rest of the protein, including the CT tail, adopting an extended helical structure as noted by X-ray analysis [50]. It is not known if this is due to the high protein concentrations required for X-ray analysis or removal of residues 1–43 that caused the trigger; nonetheless, it points to the facile ability of the CT tail to adopt an α -helical structure.

Insights obtained from functional analysis of apoE3-NT/apoAI-CT and apoAI-NT/apoE-CT

We, and others, have shown that the isolated CT domain of apoE encompassing residues 201–299, displays significant lipid binding ability [38], whereas the lipid binding behavior of isolated apoE3-NT domain (residues 1–191) resembles that of intact apoE3, showing a poor ability to cause DMPC vesicle solubilization [15]. It is possible that an interaction exists between apoE3 NT and CT domains, wherein the CT domain likely wraps around the NT domain in intact apoE3; such an interaction would either prevent the NT domain helix bundle from opening and interacting with lipids, and/or mask the sites involved in initiating lipid interaction. This conclusion also derives support from the NMR structure of monomeric apoE3, which reveals 3 helices: C1 (W210-S223); C2 (V236-E266); and, C3 (D271-W276) [55, 56]. Nevertheless, if this inference is true, then deleting the CT domain should release the ‘inhibitory’ attenuating effect of the CT domain on the NT domain. The observation that the isolated NT domain displays a poor ability to solubilize DMPC vesicles under these conditions [15] suggests that there are other mechanisms involved in triggering the opening of the NT domain helix bundle.

The apoE3-NT/apoAI-CT chimera offered further insight into the above issue; prior studies from other labs have suggested that residues 44–65 and 220–241 of apoAI bear high lipid binding affinity [3, 57]. Indeed, appending the CT tail of apoAI conferred tremendous lipid binding ability to apoE3 as inferred from the efficiency with which apoE3-NT/apoAI-CT solubilized lipid vesicles, attaining rate constants resembling that of intact apoAI. This indicates that apoAI CT domain plays a role not only in initiating lipid interaction but also in triggering the opening of an otherwise stable apoE3 NT helix bundle. Interestingly, the apoAI-NT/apoE-CT chimera displays robust vesicle solubilization ability comparable to that of intact apoAI. This

may be attributed to the contributory role of helix 1 in apoAI, supporting early studies that indicate that the high hydrophobicity is linked to its high lipid binding affinity [57, 58]. Also, the presence of several aromatic and hydrophobic residues towards the N-terminal end of apoAI may contribute towards initiating lipid-binding interaction. Alternately, the CT domain of apoE may offer more surface area in terms of binding of more phospholipid molecules, which would aid in solvation of more free cholesterol, a phenomenon suggested to explain the larger discoidal particles formed by apoE3 [42, 59].

Domain swapping also revealed interesting new information regarding the relative cholesterol efflux abilities of apoAI and apoE3; both have the ability to carry out this function [42], albeit to different extents: apoAI shows significantly higher ability to promote efflux compared to apoE3, with several studies pointing to the critical role of the CT tail, especially helix 10, of apoAI in promoting ABCA1-mediated cholesterol efflux [60, 61]. Appending the apoAI CT tail to apoE3 NT domain however did not result in a significant increase in efflux capability compared to apoE3. Conversely, appending apoE CT tail to apoAI conferred superior cholesterol efflux ability to apoAI; this is indicative of a significant role of apoE3 CT domain in cholesterol efflux reaction, corroborating previous studies that demonstrate that the entire CT domain of apoE was able to efflux with the same efficiency as intact apoAI and apoE3 [43, 62]. Indeed, this was the rationale for the development and design of an apoE3 mimetic peptide that used residues 238–266 of apoE3 as a template with modifications to increase the hydrophobicity and acidic nature of the peptide [19, 22, 62]. These studies underscore the importance of apoE CT domain in promoting cholesterol efflux. Our current study further extends its role by demonstrating the possibility of a synergistic effect between apoAI NT domain and apoE-CT domain, since this chimera's ability was better than either of the parent proteins. Other studies used chimeric constructs of mouse and human apoAI with their NT domains swapped to obtain insight into mechanism of cholesterol efflux ability [63]. They report that swapping the NT domain of human apoAI with that of the NT domain of mouse apoAI increased the efficiency of ABCA1-mediated cholesterol efflux ability of the former and increased the uptake rate of cholesterol by the liver. They attributed the gain of function to the lower stability of mouse NT domain. An independent study reported that a loss noted in the efflux capacity of apoAI C-terminal deletion mutant (Δ 190–243) was recovered when a pair of helices from apoAII (1–77) was substituted to generate an apoAI/AII chimera [64]. Together, these studies lend support to the suggestion that the tertiary structure and the organization of helices, and not the amino acid sequence *per se*, is influential in cholesterol efflux.

It is well established that apoE-containing lipoproteins interact with both the LDLr and related family members, and, HDL receptor SR-BI [65], in addition to cell surface proteoglycans such as heparan sulfate proteoglycans. This was reflected in the significantly high level of intracellular immuno- and DiI fluorescence noted for lipid-associated apoE3 and apoE3-NT/apoAI-CT chimera. Since only a very small decrease was noted in DiI fluorescence in the presence of SR-BI/SR-BII antibody, we believe that the LDLr family mediated pathway is a major route for cellular uptake of lipid-associated apoE3 and apoE3-NT/apoAI-CT, with the SR-BI/SR-BII mediated pathway playing a small role in uptake of DMPC/DiI associated apoE3 and apoE3-NT/apoAI-CT. The presence of apoAI-CT tail does not significantly alter intracellular DiI related fluorescence. Using LDLr-deficient CHO cells that were stably transfected with SR-BI, previous reports have shown that the N-terminal region of apoE3 encompassing residues 1–165 bears sufficient determinants for binding SR-BI receptor in the lipid-associated state [66]. Our current studies indicate that the LDLr mediated pathway is the preferred uptake route for apoE3 containing lipoprotein particles. In the case of DMPC/DiI/apoAI and DMPC/DiI/apoAI-NT/apoE-CT, the intracellular DiI fluorescence was visible albeit to a significantly lesser extent compared to apoE3, which was

abolished in the presence of SR-BI/SR-BII antibody. This suggests cellular uptake of DMPC/DiI /apoAI and DMPC/DiI/apoAI-NT/apoE-CT via SR-BI/ SR-BII to a small extent. These observations are consistent with previous reports that suggest that the C-terminal tail (186–243) of apoAI does not appear to significantly affect the binding interaction with SR-BI in the POPC-associated state [65, 67]. Taken together, the chimeric approach indicates that the amphipathic helical motif in apoAI or apoE3 is sufficient for interaction with SR-BI/SR-BII interaction, consistent with previous reports that employed truncated variants [65].

The domain swapping data allows us to reflect on the structural and functional basis of the physiological role of apoE3 and apoAI, two key exchangeable apolipoproteins that are both considered as anti-atherogenic proteins. With its structural flexibility and inherently disordered nature of the CT domain, apoAI is well adapted to bind cholesterol, form small lipoprotein complexes that can be rapidly removed from peripheral tissues. The limited ability of apoE3 to bind small vesicles and cause vesicle solubilization under similar conditions is reflective of its inherent preference for binding large lipoprotein particles, with the high stability of the NT domain helix bundle bearing a regulatory role in clearance of the large atherogenic lipoproteins. The helix bundle opening, which confers LDLr binding competency to the particle, is likely triggered by changes in the particle lipid content, signaling its readiness for clearance. More studies are needed to determine the clearance rate of lipoproteins in the plasma following injection of the chimeric apolipoproteins and investigating the reverse cholesterol transport pathways mediated by the chimeras.

Supporting information

S1 File. Fig A: Schematic representation illustrating generation of apoE3-NT/apoAI-CT chimera; Table I. Primer sequences for the construction of apoE3-NT/apoAI-CT chimera; Fig B: Far UV CD spectra of chimeras; Fig C: Non-denaturing PAGE analysis of DMPC/chimeras. (DOCX)

Author Contributions

Conceptualization: MTL NUI WHJB PMMW VN.

Funding acquisition: JKB PMMW VN.

Investigation: MTL SC NUI WHJB JKB PMMW VN.

Methodology: MTL NUI SC WHJB JKB PMMW VN.

Project administration: JKB PMMW VN.

Resources: JKB PMMW VN.

Supervision: JKB PMMW VN.

Validation: MTL SC NUI WHJB JKB PMMW VN.

Visualization: MTL SC NUI WHJB JKB.

Writing – original draft: MTL NUI SC WHJB JKB PMMW VN.

Writing – review & editing: MTL NUI SC WHJB JKB PMMW VN.

References

1. Getz GS, Reardon CA (2009) Apoprotein E as a lipid transport and signaling protein in the blood, liver, and artery wall. *J Lipid Res.* 50 (Suppl): S156–161.
2. Mahley RW, Rall SC Jr (2000) Apolipoprotein E: Far more than a lipid transport protein. *Annu Rev Genomics Hum Genet.* 1: 507–537. <https://doi.org/10.1146/annurev.genom.1.1.507> PMID: 11701639
3. Phillips MC (2013) New insights into the determination of HDL structure by apolipoproteins: Thematic review series: High density lipoprotein structure, function, and metabolism. *J Lipid Res.* 54: 2034–2048. <https://doi.org/10.1194/jlr.R034025> PMID: 23230082
4. Castellani LW, Lusis AJ (2001) ApoA-II versus ApoA-I: two for one is not always a good deal. *Arterioscler Thromb Vasc Biol.* 21: 1870–1872. PMID: 11742857
5. Zhang SH, Reddick RL, Piedrahita JA, Maeda N (1992) Spontaneous hypercholesterolemia and arterial lesions in mice lacking apolipoprotein E. *Science* 258: 468–471. PMID: 1411543
6. Shimano H, Ohsuga J, Shimada M, Namba Y, Gotoda T, Harada K, et al. (1995) Inhibition of diet-induced atheroma formation in transgenic mice expressing apolipoprotein E in the arterial wall. *J Clin Invest.* 95: 469–476. <https://doi.org/10.1172/JCI117687> PMID: 7860728
7. von Eckardstein A, Nofer JR, Assmann G (2001) High density lipoproteins and arteriosclerosis. Role of cholesterol efflux and reverse cholesterol transport. *Arterioscler Thromb Vasc Biol.* 21: 13–27. PMID: 11145929
8. Vitali C, Wellington CL, Calabresi L (2014) HDL and cholesterol handling in the brain. *Cardiovasc Res.* 103: 405–413. <https://doi.org/10.1093/cvr/cvu148> PMID: 24907980
9. Thomas MJ, Bhat S, Sorci-Thomas MG (2008) Three-dimensional models of HDL apoA-I: Implications for its assembly and function. *J Lipid Res.* 49: 1875–1883. <https://doi.org/10.1194/jlr.R800010-JLR200> PMID: 18515783
10. Ng DS, Vezina C, Wolever TS, Kuksis A, Hegele RA, Connelly PW (1995) Apolipoprotein A-I deficiency: Biochemical and metabolic characteristics. *Arterioscler Thromb Vasc Biol.* 15: 2157–2164. PMID: 7489237
11. Rubin EM, Krauss RM, Spangler EA, Verstuyft JG, Clift SM (1991) Inhibition of early atherogenesis in transgenic mice by human apolipoprotein A1. *Nature* 353: 265–267. <https://doi.org/10.1038/353265a0> PMID: 1910153
12. Liu CC, Kanekiyo T, Xu H, Bu G (2013) Apolipoprotein E and Alzheimer disease: risk, mechanisms and therapy. *Nat Rev Neurol.* 9: 106–118. <https://doi.org/10.1038/nrneuro.2012.263> PMID: 23296339
13. Wilson C, Wardell MR, Weisgraber KH, Mahley RW, Agard DA (1991) Three-dimensional structure of the LDL receptor-binding domain of human apolipoprotein E. *Science* 252: 1817–1822. PMID: 2063194
14. Wetterau JR, Aggerbeck LP, Rall SC Jr, Weisgraber KH (1988) Human apolipoprotein E3 in aqueous solution. I. Evidence for two structural domains. *J Biol Chem.* 263: 6240–6248. PMID: 3360781
15. Weers PMM, Narayanaswami V, Choy N, Luty R, Hicks L, Kay CM, et al. (2002) Lipid binding ability of human apolipoprotein E N-terminal domain isoforms: correlation with protein stability? *Biophys Chem.* 100: 481–492.
16. June E, Eichner STD, Ghazala P, Thompson DM, Stewart KE, Stroehla BC (2002) Apolipoprotein E Polymorphism and Cardiovascular Disease: A HuGE Review. *Am J Epidemiol.* 155: 487–495. PMID: 11882522
17. Huang RY, Garai K, Frieden C, Gross ML (2011) Hydrogen/deuterium exchange and electron-transfer dissociation mass spectrometry determine the interface and dynamics of apolipoprotein E oligomerization. *Biochemistry* 50: 9273–9282. <https://doi.org/10.1021/bi2010027> PMID: 21899263
18. Bielicki JK (2016) ABCA1 agonist peptides for the treatment of disease. *Curr Opin Lipidol.* 27: 40–46. <https://doi.org/10.1097/MOL.0000000000000258> PMID: 26655293
19. Bielicki JK, Zhang H, Cortez Y, Zheng Y, Narayanaswami V, Patel A, et al. (2010) A new HDL mimetic peptide that stimulates cellular cholesterol efflux with high efficiency greatly reduces atherosclerosis in mice. *J Lipid Res.* 51: 1496–1503. <https://doi.org/10.1194/jlr.M003665> PMID: 20075422
20. Hafiane A, Bielicki JK, Johansson JO, Genest J (2015) Novel Apo E-Derived ABCA1 Agonist Peptide (CS-6253) Promotes Reverse Cholesterol Transport and Induces Formation of prebeta-1 HDL In Vitro. *PloS One* 10: e0131997. <https://doi.org/10.1371/journal.pone.0131997> PMID: 26207756
21. Zheng Y, Kim SH, Patel AB, Narayanaswami V, Iavarone AT, Hura GL, et al. (2012) The positional specificity of EXXK motifs within an amphipathic alpha-helix dictates preferential lysine modification by acrolein: implications for the design of high-density lipoprotein mimetic peptides. *Biochemistry* 51: 6400–6412. <https://doi.org/10.1021/bi300626g> PMID: 22800301

22. Zheng Y, Patel AB, Narayanaswami V, Hura GL, Hang B, Bielicki JK. (2011) HDL mimetic peptide AT1-5261 forms an oligomeric assembly in solution that dissociates to monomers upon dilution. *Biochemistry* 50: 4068–4076. <https://doi.org/10.1021/bi2002955> PMID: 21476522
23. Chen J, Li Q, Wang J (2011) Topology of human apolipoprotein E3 uniquely regulates its diverse biological functions. *Proc Natl Acad Sci USA*. 108: 14813–14818. <https://doi.org/10.1073/pnas.1106420108> PMID: 21873229
24. Li WH, Tamimura M, Luo CC, Datta S, Chant L (1988) The apolipoprotein multigene family: biosynthesis, structure, structure-function relationships, and evolution. *J Lipid Res*. 29: 245–271. PMID: 3288703
25. Segrest JP, Garber DW, Brouillette CG, Harvey SC, Anantharamaiah GM (1994) The amphipathic alpha helix: a multifunctional structural motif in plasma apolipoproteins. *Adv Protein Chem* 45: 303–369. PMID: 8154372
26. Segrest JP, Jones MK, De Loof H, Brouillette CG, Venkatachalapathi YV, Anantharamaiah GM (1992) The amphipathic helix in the exchangeable apolipoproteins: a review of secondary structure and function. *J Lipid Res*. 33: 141–166. PMID: 1569369
27. Gursky O (2013) Crystal structure of Delta(185–243)ApoA-I suggests a mechanistic framework for the protein adaptation to the changing lipid load in good cholesterol: From flatland to sphereland via double belt, belt buckle, double hairpin and trefoil/tetrafoil. *J Mol Biol*. 425: 1–16. <https://doi.org/10.1016/j.jmb.2012.09.027> PMID: 23041415
28. Perez K, Yeam I, Jahn MM, Kang BC (2006) Megaprimer-mediated domain swapping for construction of chimeric viruses. *J Virol Methods* 135: 254–262. <https://doi.org/10.1016/j.jviromet.2006.03.020> PMID: 16701906
29. Wei D, Li M, Zhang X, Xing L (2004) An improvement of the site-directed mutagenesis method by combination of megaprimer, one-side PCR and DpnI treatment. *Anal Biochem*. 331: 401–403. <https://doi.org/10.1016/j.ab.2004.04.019> PMID: 15265749
30. Choy N, Raussens V, Narayanaswami V (2003) Inter-molecular coiled-coil formation in human apolipoprotein E C-terminal domain. *J Mol Biol*. 334: 527–539. PMID: 14623192
31. Patel AB, Khumsupan P, Narayanaswami V (2010) Pyrene fluorescence analysis offers new insights into the conformation of the lipoprotein-binding domain of human apolipoprotein E. *Biochemistry* 49: 1766–1775. <https://doi.org/10.1021/bi901902e> PMID: 20073510
32. Tran TN, Kosaraju MG, Tamamizu-Kato S, Akintunde O, Zheng Y, Bielicki JK, et al. (2014) Acrolein modification impairs key functional features of rat apolipoprotein E: identification of modified sites by mass spectrometry. *Biochemistry* 53: 361–375. <https://doi.org/10.1021/bi401404u> PMID: 24325674
33. Fisher C, Abdul-Aziz D, Blacklow SC (2004) A two-module region of the low-density lipoprotein receptor sufficient for formation of complexes with apolipoprotein E ligands. *Biochemistry* 43: 1037–1044. <https://doi.org/10.1021/bi035529y> PMID: 14744149
34. Maletinska L, Blakely EA, Bjornstad KA, Deen DF, Knoff LJ, Forte TM. (2000) Human glioblastoma cell lines: levels of low-density lipoprotein receptor and low-density lipoprotein receptor-related protein. *Cancer Res*. 60: 2300–2303. PMID: 10786698
35. Narayanaswami V, Szeto SS, Ryan RO (2001) Lipid association-induced N- and C-terminal domain reorganization in human apolipoprotein E3. *J Biol Chem*. 276: 37853–37860. <https://doi.org/10.1074/jbc.M102953200> PMID: 11483594
36. Nguyen D, Dhanasekaran P, Nickel M, Mizuguchi C, Watanabe M, Saito H, et al. (2014) Influence of domain stability on the properties of human apolipoprotein E3 and E4 and mouse apolipoprotein E. *Biochemistry* 53: 4025–4033. <https://doi.org/10.1021/bi500340z> PMID: 24871385
37. Johnson JD, El-Bayoumi MA, Weber LD, Tulinsky A (1979) Interaction of alpha-chymotrypsin with the fluorescent probe 1-anilinonaphthalene-8-sulfonate in solution. *Biochemistry* 18: 1292–1296. PMID: 427115
38. Fabilane CS, Nguyen PN, Hernandez RV, Nirudodhi S, Duong M, Maier CS, et al. (2016) Mechanism of Lipid Binding of Human Apolipoprotein E3 by Hydrogen/Deuterium Exchange/Mass Spectrometry and Fluorescence Polarization. *Protein Pept Lett*. 23: 404–413. PMID: 26902251
39. Vedhachalam C, Duong PT, Nickel M, Nguyen D, Dhanasekaran P, Saito H, et al. (2007) Mechanism of ATP-binding cassette transporter A1-mediated cellular lipid efflux to apolipoprotein A-I and formation of high density lipoprotein particles. *J Biol Chem*. 282: 25123–25130. <https://doi.org/10.1074/jbc.M704590200> PMID: 17604270
40. Khumsupan P, Ramirez R, Khumsupan D, Narayanaswami V (2011) Apolipoprotein E LDL receptor-binding domain-containing high-density lipoprotein: a nanovehicle to transport curcumin, an antioxidant and anti-amyloid bioflavonoid. *Biochim Biophys Acta* 1808: 352–359. <https://doi.org/10.1016/j.bbamem.2010.09.007> PMID: 20851099

41. Kim SH, Adhikari BB, Cruz S, Schramm MP, Vinson JA, Narayanaswami V (2015) Targeted intracellular delivery of resveratrol to glioblastoma cells using apolipoprotein E-containing reconstituted HDL as a nanovehicle. *PLoS One* 10: e0135130. <https://doi.org/10.1371/journal.pone.0135130> PMID: 26258481
42. Phillips MC (2014) Molecular mechanisms of cellular cholesterol efflux. *J Biol Chem*. 289: 24020–24029. <https://doi.org/10.1074/jbc.R114.583658> PMID: 25074931
43. Vedhachalam C, Narayanaswami V, Neto N, Forte TM, Phillips MC, Lund-Katz S, et al. (2007) The C-terminal lipid-binding domain of apolipoprotein E is a highly efficient mediator of ABCA1-dependent cholesterol efflux that promotes the assembly of high-density lipoproteins. *Biochemistry* 46: 2583–2593. <https://doi.org/10.1021/bi602407r> PMID: 17305370
44. Garai K, Frieden C (2010) The association-dissociation behavior of the ApoE proteins: kinetic and equilibrium studies. *Biochemistry* 49: 9533–9541. <https://doi.org/10.1021/bi101407m> PMID: 20923231
45. Aggerbeck LP, Wetterau JR, Weisgraber KH, Wu CS, Lindgren FT (1988) Human apolipoprotein E3 in aqueous solution. II. Properties of the amino- and carboxyl-terminal domains. *J Biol Chem*. 263: 6249–6258. PMID: 3360782
46. Westerlund JA, Weisgraber KH (1993) Discrete carboxyl-terminal segments of apolipoprotein E mediate lipoprotein association and protein oligomerization. *J Biol Chem*. 268: 15745–15750. PMID: 8340399
47. Sivashanmugam A, Wang J (2009) A unified scheme for initiation and conformational adaptation of human apolipoprotein E N-terminal domain upon lipoprotein binding and for receptor binding activity. *J Biol Chem*. 284: 14657–14666. <https://doi.org/10.1074/jbc.M901012200> PMID: 19307174
48. Chetty PS, Mayne L, Lund-Katz S, Stranz D, Englander SW, Phillips MC (2009) Helical structure and stability in human apolipoprotein A-I by hydrogen exchange and mass spectrometry. *Proc Natl Acad Sci USA* 106: 19005–19010. <https://doi.org/10.1073/pnas.0909708106> PMID: 19850866
49. Mei X, Atkinson D (2011) Crystal structure of C-terminal truncated apolipoprotein A-I reveals the assembly of high density lipoprotein (HDL) by dimerization. *J Biol Chem*. 286: 38570–38582. <https://doi.org/10.1074/jbc.M111.260422> PMID: 21914797
50. Borhani DW, Rogers DP, Engler JA, Brouillette CG (1997) Crystal structure of truncated human apolipoprotein A-I suggests a lipid-bound conformation. *Proc Natl Acad Sci USA* 94: 12291–12296. PMID: 9356442
51. Beckstead JA, Block BL, Bielicki JK, Kay CM, Oda MN, Ryan RO (2005) Combined N- and C-terminal truncation of human apolipoprotein A-I yields a folded, functional central domain. *Biochemistry* 44: 4591–4599. <https://doi.org/10.1021/bi0477135> PMID: 15766290
52. Swaney JB, O'Brien K (1978) Cross-linking studies of the self-association properties of apo-A-I and apo-A-II from human high density lipoprotein. *J Biol Chem*. 253: 7069–7077. PMID: 211137
53. Donovan JM, Benedek GB, Carey MC (1987) Self-association of human apolipoproteins A-I and A-II and interactions of apolipoprotein A-I with bile salts: quasi-elastic light scattering studies. *Biochemistry* 26: 8116–8125. PMID: 3126797
54. Chetty PS, Nguyen D, Nickel M, Lund-Katz S, Mayne L, Englander SW, et al. (2013) Comparison of apoA-I helical structure and stability in discoidal and spherical HDL particles by HX and mass spectrometry. *J Lipid Res*. 54: 1589–1597. <https://doi.org/10.1194/jlr.M034785> PMID: 23580759
55. Fan D, Li Q, Korando L, Jerome WG, Wang J (2004) A monomeric human apolipoprotein E carboxyl-terminal domain. *Biochemistry* 43: 5055–5064. <https://doi.org/10.1021/bi035958w> PMID: 15109264
56. Zhang Y, Vasudevan S, Sojitrawala R, Zhao W, Cui C, Xu C, et al. (2007) A monomeric, biologically active, full-length human apolipoprotein E. *Biochemistry* 46: 10722–10732. <https://doi.org/10.1021/bi700672v> PMID: 17715945
57. Frank PG, Marcel YL (2000) Apolipoprotein A-I: structure-function relationships. *J Lipid Res*. 41: 853–872. PMID: 10828078
58. Palgunachari MN, Mishra VK, Lund-Katz S, Phillips MC, Adeyeye SO, Alluri S, et al. (1996) Only the two end helices of eight tandem amphipathic helical domains of human apo A-I have significant lipid affinity. Implications for HDL assembly. *Arterioscler Thromb Vasc Biol*. 16: 328–338. PMID: 8620350
59. Krimbou L, Denis M, Haidar B, Carrier M, Marcil M, Genest J Jr. (2004) Molecular interactions between apoE and ABCA1: impact on apoE lipidation. *J Lipid Res*. 45: 839–848. <https://doi.org/10.1194/jlr.M300418-JLR200> PMID: 14754908
60. Leman LJ, Maryanoff BE, Ghadir MR (2014) Molecules that mimic apolipoprotein A-I: potential agents for treating atherosclerosis. *J Med Chem*. 57: 2169–2196. <https://doi.org/10.1021/jm4005847> PMID: 24168751
61. Panagotopoulos SE, Witting SR, Horace EM, Hui DY, Maiorano JN, Davidson WS (2002) The role of apolipoprotein A-I helix 10 in apolipoprotein-mediated cholesterol efflux via the ATP-binding cassette

- transporter ABCA1. *J Biol Chem.* 277: 39477–39484. <https://doi.org/10.1074/jbc.M207005200> PMID: 12181325
62. Hafiane A, Bielicki JK, Johansson JO, Genest J (2014) Apolipoprotein E derived HDL mimetic peptide ATI-5261 promotes nascent HDL formation and reverse cholesterol transport in vitro. *Biochim Biophys Acta* 1842: 1498–1512. <https://doi.org/10.1016/j.bbaliip.2014.07.018> PMID: 25091998
 63. Alexander ET, Vedhachalam C, Sankaranarayanan S, de la Llera-Moya M, Rothblat GH, Rader DJ, et al. (2011) Influence of apolipoprotein A-I domain structure on macrophage reverse cholesterol transport in mice. *Arterioscler Thromb Vasc Biol.* 31: 320–327. <https://doi.org/10.1161/ATVBAHA.110.216226> PMID: 21071688
 64. Holvoet P, Danloy S, Deridder E, Lox M, Bernar H, Dhoest A, et al. (1998) Substitution of the carboxyl-terminal domain of apo A1 with apo AII sequences restores the potential of HDL to reduce the progression of atherosclerosis in apo E knockout mice. *J Clin Invest.* 102: 79–385.
 65. Thuahnai ST, Lund_Katz S, Anatharamaiah GM, Williams DL, Phillips MC (2003) A quantitative analysis of apolipoprotein binding to SR-BI: Multiple binding sites for lipid-free and lipid-associated apolipoproteins. *J. Lipid Res.* 44: 1132–1142. <https://doi.org/10.1194/jlr.M200429-JLR200> PMID: 12671027
 66. Li X, Kan HY, Lavrentiadou S, Krieger M, Zannis V (2002) Reconstituted discoidal apoE-phospholipid particles are ligands for the scavenger receptor BI. The amino terminal 1–165 domain of apoE suffices for receptor binding. *J. Biol. Chem.* 277: 21149–21157. <https://doi.org/10.1074/jbc.M200658200> PMID: 11861652
 67. Liadaki KN, Liu T, Xu S, Ishida B, Duchateaux PN, Krieger JP, et al. (2000) Binding of high density lipoprotein (HDL) and discoidal HDL to the HDL receptor scavenger receptor Class B Type I. *J. Biol. Chem.* 275: 21262–21271.