

# UCLA

## UCLA Previously Published Works

### Title

Hot Topics in Research: Preventive Neuroradiology in Brain Aging and Cognitive Decline

### Permalink

<https://escholarship.org/uc/item/7m37z0x4>

### Journal

American Journal of Neuroradiology, 36(10)

### ISSN

0195-6108

### Authors

Raji, CA

Eyre, H

Wei, SH

et al.

### Publication Date

2015-10-01

### DOI

10.3174/ajnr.a4409

Peer reviewed

# Hot Topics in Research: Preventive Neuroradiology in Brain Aging and Cognitive Decline

C.A. Raji, H. Eyre, S.H. Wei, D.E. Bredesen, S. Moylan, M. Law, G. Small, P.M. Thompson, R.M. Friedlander, D.H. Silverman, B.T. Baune, T.A. Hoang, N. Salamon, A.W. Toga, and M.W. Vernooij



**SUMMARY:** Preventive neuroradiology is a new concept supported by growing literature. The main rationale of preventive neuroradiology is the application of multimodal brain imaging toward early and subclinical detection of brain disease and subsequent preventive actions through identification of modifiable risk factors. An insightful example of this is in the area of age-related cognitive decline, mild cognitive impairment, and dementia with potentially modifiable risk factors such as obesity, diet, sleep, hypertension, diabetes, depression, supplementation, smoking, and physical activity. In studying this link between lifestyle and cognitive decline, brain imaging markers may be instrumental as quantitative measures or even indicators of early disease. The purpose of this article is to provide an overview of the major studies reflecting how lifestyle factors affect the brain and cognition aging. In this hot topics review, we will specifically focus on obesity and physical activity.

**ABBREVIATIONS:** AD = Alzheimer disease; APOE = Apolipoprotein E; BMI = body mass index; MCI = mild cognitive impairment

Preventive neuroradiology is an emerging discipline that has the potential to contribute substantially to human health. Preventive neuroradiology is the application of multimodal brain imaging toward early identification of subclinical brain disease prevention through the influence of modifiable risk factors. Positioned at the intersection of neurology and psychiatry, it has applications in a multitude of diseases including age-related cognitive decline, mood and psychotic disorders, and a variety of other neuropsychiatric conditions. Preventive neuroradiology also has application to the recently proposed field of health neuroscience,<sup>1</sup> a concept that studies the interplay between the brain and physical health during the life span.<sup>1</sup>

A specific area where preventive neuroradiology is having an

impact is in the area of age-related cognitive decline. As populations age, the burden of age-related cognitive decline is rising. Globally, the number of older individuals (60 years of age or older) is expected to more than double, from 841 million in 2013 to >2 billion in 2050,<sup>2</sup> with rates of dementia expected to increase from an estimated 44 million worldwide in 2013<sup>3</sup> to an estimated 75.6 million in 2030, and 136 million in 2050.

The expected precipitous rise in rates of age-related cognitive decline has not, to date, been met with a substantial expansion in treatment options. In fact, current pharmacologic therapies for the most common form of dementia, Alzheimer disease (AD), appear to provide some symptomatic relief but do not influence the underlying pathophysiology.<sup>4</sup> This problem signifies the need to focus on increasing our understanding of preventive lifestyle modifications and their neurobiologic underpinnings of the disease. For example, with AD, a recent study has highlighted the important role of risk-factor reduction for decreasing prevalence.<sup>5</sup> Barnes and Yaffe<sup>5</sup> explored the role of 7 potentially modifiable AD risk factors: diabetes, midlife hypertension, midlife obesity, smoking, depression, low educational attainment, and physical inactivity. They determined that these factors contributed to up to half of AD cases globally (17.2 million), and a 10%–25% reduction in all risk factors could potentially prevent as many as 1.1–3.0 million cases. An emerging literature currently explores the effect of these risk factors on neurobiologic factors. Other lifestyle factors that have been found to reduce the risk of AD include mind-body exercise (eg, yoga, tai chi, qi gong<sup>6</sup>), conventional physical activity (eg, aerobic, strength training<sup>6</sup>), nutritional supplements (eg,  $\omega$ -3 fatty acids, flavonols<sup>7</sup>), stress-reduction techniques (eg, Mindfulness-Based Stress Reduction<sup>8</sup>),

Received February 15, 2015; accepted after revision February 23.

From the Departments of Radiology (C.A.R., S.H.W., T.A.H., N.S.), Psychiatry (H.E., G.S.), Neurology (D.E.B.), and Nuclear Medicine (D.H.S.), University of California at Los Angeles Medical Center, University of California at Los Angeles, Los Angeles, California; Discipline of Psychiatry (H.E., B.T.B.), University of Adelaide, Adelaide, South Australia, Australia; School of Medicine (S.M.), Deakin University, Geelong, Victoria, Australia; Department of Radiology (M.L.) and Laboratory of Neuroimaging (P.M.T., A.W.T.), University of Southern California, Los Angeles, California; Department of Neurosurgery (R.M.F.), University of Pittsburgh, Pittsburgh, Pennsylvania; and Departments of Radiology and Epidemiology (M.W.V.), Erasmus University Medical Center, Rotterdam, the Netherlands.

This work was supported by the National Institute of Biomedical Imaging and Bioengineering (grant P41EB015922) and the National Institutes of Health (grant U01AG024904).

Please address correspondence to Cyrus A. Raji, MD, PhD, Department of Radiology, UCLA Medical Center, 757 Westwood Blvd, Los Angeles, CA 90095; e-mail: cyrusraji@gmail.com; @cyrusraji

Indicates open access to non-subscribers at [www.ajnr.org](http://www.ajnr.org)

<http://dx.doi.org/10.3174/ajnr.A4409>

sleep-modification strategies,<sup>9</sup> and dietary interventions (eg, fish consumption, Mediterranean diet).<sup>10</sup>

Classic risk-factor studies in dementia are hampered by the difficult phenotyping of the disease with large heterogeneity in severity and presentation, and by the fact that once symptomatic, irreversible brain damage is already present. The paradigm shift in medicine from cure toward prevention calls for identification of potentially modifiable factors that affect disease in an earlier stage. During the past decades, brain imaging has proved instrumental as a means of studying brain changes in aging and age-related cognitive decline.<sup>11–14</sup> Many new imaging markers have been identified that either serve as quantifiable intermediate factors in the pathway of lifestyle and age-related cognitive decline or could even indicate disease in an early stage. For example, the hippocampal structure has been shown to be affected both positively and negatively by lifestyle factors by using structural, functional, and molecular forms of neuroimaging.<sup>15,16</sup> Neuroradiology as a discipline is hence highly important in better understanding the role of these lifestyle factors in positively or negatively affecting structural, functional, and molecular radiologic correlates.

In this hot topics in research review, we explore the potential role for “preventive neuroradiology” in the risk reduction of neuropsychiatric disorders, by using age-related cognitive decline as an example.

## **OBESITY AND AGE-RELATED COGNITIVE DECLINE**

### ***Insights from Clinical Trials and Epidemiology***

There is evidence of an association between midlife obesity and increased risk of dementia. The Barnes and Yaffe model<sup>5</sup> suggests a pooled relative risk estimate of 1.60 (95% CI, 1.34–1.92) and approximately 2% (677,000) of AD cases worldwide are potentially attributable to midlife obesity. A recent systematic review<sup>17</sup> identified 10 prospective studies that examined the association between various measures of body weight and dementia, of which 7 were suitable for inclusion in a meta-analysis. Three of 4 studies found that body mass index (BMI) (as a continuous measure) was associated with an increased risk of all-cause dementia; 2 of 5 studies indicated that obesity (BMI  $\geq$  30) was associated with an increased risk of all-cause dementia; and 2 of 5 studies found that obesity was associated with an increased risk for AD.

### ***Insights from Neurobiology***

Commonly proposed mediators for the relationship between higher body tissue adiposity and brain structure at any age include hypercortisolemia, reduced exercise, impaired respiratory function, inflammation, oxidative stress, cardiovascular disease, hypertension and/or hyperlipidemia, and type 2 diabetes mellitus.<sup>18,19</sup> The co-occurrence of at least 3 of the following cardiovascular factors including large waist circumference (or adiposity), increased triglycerides, elevated blood pressure, and fasting hyperglycemia has been referred to as “the metabolic syndrome.”<sup>20</sup> Adiposity is also associated with insulin resistance and subsequent type 2 diabetes, hypertension, dyslipidemia, cardiovascular disease, degenerative joint disease, cancer, and lung disease.<sup>21</sup> Moreover, an elevated BMI is significantly correlated with a reduction in neuronal fiber bundle length, which is believed to contribute to brain atro-

phy. Finally, greater brain atrophy may occur in people with central leptin insufficiency, a marker of obesity.<sup>18</sup>

### ***Insights from Neuroradiology: Structural Imaging***

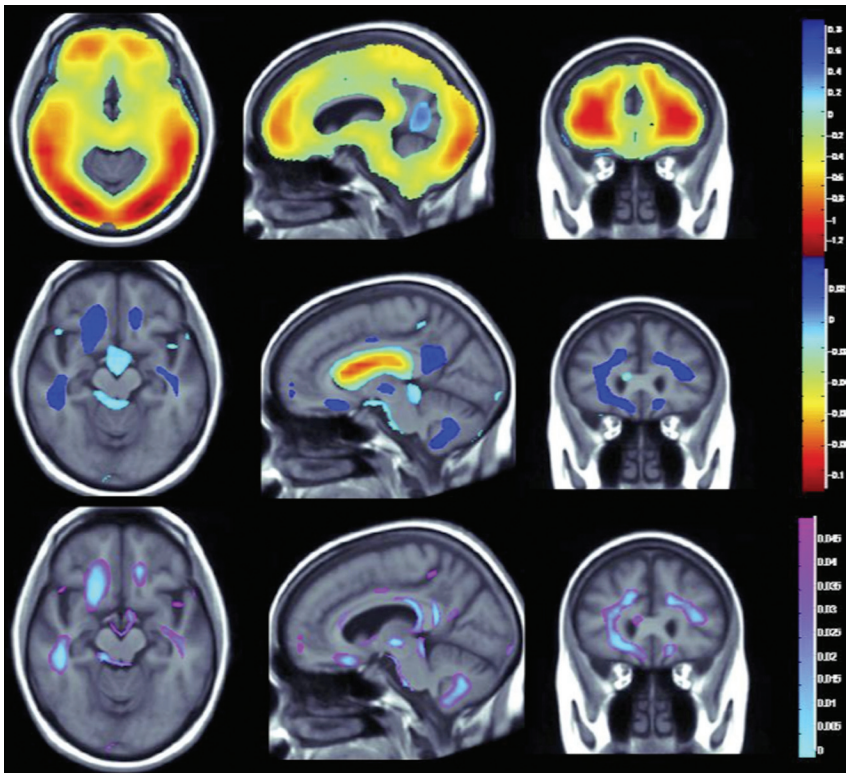
**Volumetric MR Imaging.** Several studies have investigated the relationship between BMI and brain atrophy. In an early study,<sup>18</sup> tensor-based morphometry was used to examine gray matter and white matter volume differences in 94 elderly subjects who remained cognitively healthy for at least 5 years after their scan. When controlling for age, sex, and race, subjects with obesity with a high BMI (BMI of  $>$ 30) showed atrophy in the frontal lobes, anterior cingulate gyrus, hippocampus, and thalamus compared with individuals with a normal BMI (18.5–25). Overweight subjects (BMI of 25–30) had atrophy in the basal ganglia and corona radiata of the WM. Overall brain volume did not differ between overweight and obese persons. In a similar study, Bobb et al<sup>22</sup> explored 5-year longitudinal associations between change in BMI and gray matter with time, in a cohort of 247 former heavy-metal workers and community controls. Higher baseline BMI was associated with greater decline in temporal and occipital GM ROI volumes. Change in BMI during the 5-year period was only associated with a change in hippocampal volume and not other ROIs. Overall, higher BMI was associated with declines in volume in temporal and occipital GM with time.

A recent study<sup>23</sup> explored the associations among physical activity, BMI, and brain structure in normal aging, mild cognitive impairment (MCI), and AD dementia. This study included 963 participants from the multisite Cardiovascular Health Study including healthy controls ( $n = 724$ ), patients with Alzheimer dementia ( $n = 104$ ), and individuals with MCI ( $n = 135$ ). Physical activity was independently associated with greater whole-brain and regional brain volumes and reduced ventricular dilation. Those with higher BMI had lower whole-brain and regional brain volumes. A physical activity–BMI conjunction analysis showed brain preservation with physical activity and volume loss with increased BMI in overlapping brain regions (Fig 1).

A study by Driscoll et al<sup>24</sup> explored the influence of midlife obesity on brain atrophy. In this study, associations between global (BMI) and central (waist circumference) midlife obesity and subsequent trajectories of regional brain atrophy in 152 individuals [M (age) = 69  $\pm$  7.8 years] were examined. After follow-up, 21 individuals became cognitively impaired. Results suggest that midlife obesity may be an important modifier of brain atrophy in individuals who are developing cognitive impairment and dementia, while it has little effect on structural brain integrity in older adults without dementia.

**Brain Tissue Integrity.** MR imaging advancements such as diffusion tensor imaging have more recently been used to quantify subtle changes in WM tract microstructure and connectivity in senescent and developing adolescent brains. Furthermore, the use of tractography and diffusion pattern statistical analyses is instrumental in determining the spatial definition of individual tracts. Research has shown that cerebral WM integrity is decreased in the aging brain, particularly affecting the prefrontal regions.<sup>25</sup>

A recent study by Stanek et al<sup>26</sup> examined the association between BMI and WM integrity. The authors used a diffusion



**FIG 1.** Relationship between obesity and physical activity on brain structure (adapted with permission from Boyle et al<sup>23</sup>). The top panel shows whole-brain 3D maps in which regional brain volumes are inversely correlated with BMI. The middle panel shows where regional brain volumes positively correlate with physical activity. The lower panel shows regions of significant brain volume differences from both higher BMI and physical activity in a conjunction analysis that identifies brain areas that are independently influenced by these factors.

tensor imaging index of tract coherence—fractional anisotropy to examine the structure of the corpus callosum and fornix. This study classified 103 adult participants between 21 and 86 years of age without a history of neurologic, medical, or psychiatric illness according to BMI. Individuals with obesity demonstrated lower fractional anisotropy than healthy and overweight persons for all WM indexes, but no fractional anisotropy differences emerged between overweight and healthy individuals.

**Functional Imaging.** Functional MR imaging may provide an efficacious method for assessing the impact of adiposity in cognitively intact middle-aged adults because it can identify altered brain activation patterns indicative of cognitive vulnerability.<sup>27</sup> Prior work has identified changes in brain activation during cognition in association with elevated BMI.<sup>28–30</sup> One recent study explored how a centralized distribution of adiposity relates to brain activation during a working memory task in a cognitively intact middle-aged sample.<sup>31</sup> Seventy-three adults, 40–60 years of age, completed a verbal working memory task during fMRI. Central adiposity was assessed with waist circumference. Larger waist circumference was associated with a diminished working memory–related blood oxygen level–dependent response in the right superior frontal gyrus and left middle frontal gyrus. Reduced task-related activation in the right superior frontal gyrus and left middle frontal gyrus was related to slower reaction time on the task, controlling for age and education.

## PHYSICAL ACTIVITY AND AGE-RELATED COGNITIVE DECLINE

### Insights from Clinical Trials and Epidemiology

Conventional physical activity is one of the most promising therapies for the treatment and prevention of age-related cognitive decline and dementia.<sup>4</sup> Most important, there are a variety of subtypes of physical activity, from aerobic activity, to resistance, to stretching and toning. A recent randomized controlled trial<sup>32</sup> examined the efficacy of resistance and aerobic training in the improvement of cognitive functions in subjects with subjective MCI. The study occurred during 6 months and involved 86 community-dwelling women 70–80 years of age. Physical activity protocols included twice-weekly resistance training, twice-weekly aerobic training, or twice-weekly balance and toning training (ie, control). Resistance training improved selective attention/conflict resolution and associated memory compared with balance and toning training. In contrast, aerobic physical activity improved general balance and mobility and cardiovascular capacity. The study also found that aerobic physical activity improved verbal memory

and both resistance and aerobic physical activity improved spatial memory.

A recent meta-analysis<sup>33</sup> examined the efficacy of exercise on cognition in older adults with MCI. MCI was diagnosed based on documented criteria or via the Mini-Mental State Examination. Fourteen randomized controlled trials with 1695 participants 65–95 years of age were used. These studies had a duration of 6–52 weeks. Overall, 42% of effect sizes were potentially clinically relevant (effect size of >0.20) with only 8% of cognitive outcomes statistically significant. The meta-analysis revealed negligible but significant effects of exercise on verbal fluency (effect size: 0.17 [range, 0.04–0.30]). No significant benefit was found for additional executive measures, memory, or information processing. The authors critically appraised randomized controlled trial methods and concluded that they had moderate quality, with most trial samples being too small for sufficient power. They suggested that there is clearly some effect of exercise at moderate-to-high levels of exertion.

Physical activity is on a continuum with physical inactivity. Worldwide, approximately 13% (nearly 4.3 million) of AD cases may be attributable to physical inactivity.<sup>5</sup> A recent systematic review and meta-analysis identified 16 prospective studies on the association between physical activity and dementia that included 163,797 older adults without dementia at baseline and 3219 individuals with dementia at follow-up.<sup>34</sup> The combined relative risk in the highest-versus-lowest physical activity groups was 0.72 for

all-cause dementia and 0.55 for AD. The previously mentioned Barnes and Yaffe<sup>5</sup> model suggests a relative risk of 1.82 for AD.

### **Insights from Neurobiology**

The biologic mechanisms by which cognition is enhanced through physical exercise remain to be completely elucidated, though the number of studies that have tried to identify these mechanisms has increased in the past 10 years. For the most part, the studies that support the notion that physical exercise has an impact on brain functions have focused on the direct biologic effects of exercise by using both animal and human models.<sup>6</sup> However, exercise may enhance cognition indirectly by improving health conditions (ie, stress, sleep), reducing chronic diseases (ie, coronary heart disease) that impact neurocognitive functions, and offering psychological and social effects.<sup>35</sup> The molecular mechanisms by which exercise induces angiogenesis, neurogenesis, and synaptogenesis have received growing attention in recent years.<sup>6</sup>

From a mechanistic perspective, sedentary behaviors may contribute to the risk of AD and dementia by 2 main factors.<sup>5,36</sup> First, they are associated with an increased risk of cardiometabolic risk factors—diabetes, hypertension, obesity<sup>37</sup>—that are associated with an increased risk of dementia.<sup>38,39</sup> Second, sedentary behaviors appear to have direct effects on neurobiologic processes. A recent review<sup>40</sup> outlines evidence to suggest that sedentary behaviors may have detrimental effects on the brain via reducing neurogenesis, synaptic plasticity, neurotrophin production, and angiogenesis and by increasing inflammation. Most important however, no studies have integrated objective measurements of both sedentary behavior and physical activity with measures of cognition or potential mechanistic outcomes such as neurogenesis and synaptic plasticity, regional fat deposits including visceral fat and pericardial fat, disrupted glucose metabolism, and/or inflammation.<sup>40</sup>

### **Insights from Neuroradiology: Structural Brain Imaging**

**Volumetric MR Imaging.** Imaging studies corroborate the findings of the beneficial effects of exercise on brain structure and function. Higher gray and white matter cortical volumes were present on MR volumetric imaging in individuals with and without dementia with better aerobic fitness (maximal oxygen consumption, maximal oxygen uptake, peak oxygen uptake, or maximal aerobic capacity).<sup>41,42</sup> MR imaging studies in elderly populations without dementia also found that bilateral hippocampal volumes are better maintained in fit individuals, with resultant superior performance in tasks related to spatial memory.<sup>43</sup> A cross-sectional study by Makizako et al<sup>44</sup> examined associations between light- and moderate-intensity physical activity (measured with accelerometers), total duration of physical activity, hippocampal volume, and memory in older adults with MCI. Moderate physical activity was associated with hippocampal volume after controlling for age, but light and total physical activity were not. Both light and moderate physical activity groups were not associated with memory performance. Structural equation modeling demonstrated that moderate physical activity was not directly associated with memory but significantly contributed to hippocampal volume; hippocampal volume loss was significantly

and directly associated with poor memory performance. This finding suggests that the benefits of moderate physical activity on memory among older adults with MCI may be mediated by hippocampal volume. Most intriguing, reversal of age-related hippocampal volume loss by 2%, equivalent to 1–2 years of volume loss, was observed after exercise training during late adulthood; this finding was accompanied by a concomitant increased serum brain-derived neurotrophic factor and improved memory function.<sup>45</sup>

Randomized controlled trials have demonstrated the neuroprotective effects of exercise on brain aging in elderly populations, including in those with dementia, leading to positive effects on brain structure and cognitive performance. Some studies also suggested that these effects may be dependent on the duration, quality, and variety of exercise.<sup>46</sup>

No studies have examined the relationship between sedentary behavior and brain structure.<sup>40</sup> We hypothesize that sedentary behaviors are associated with atrophy of numerous brain regions, particularly the hippocampus. Faster rates of hippocampal volume decay are associated with MCI and AD.<sup>47,48</sup>

**Functional Imaging.** We are aware of 1 study exploring hippocampal physiology (blood flow) in sedentary older adults.<sup>49</sup> In this study, investigators used resting hippocampal cerebral blood flow measures (via arterial spin-labeling MR imaging) and sedentary time/physical activity (via accelerometry) on 33 cognitively healthy adults (52–81 years of age), 9 of whom were *Apolipoprotein E (APOE) ε4* carriers. Results indicated that the relationship between sedentary time and cerebral blood flow in the left hippocampus differs by *APOE* status, whereby *APOE ε4* carriers show higher cerebral blood flow as a function of longer sedentary time compared with noncarriers, possibly suggesting a cerebral blood flow regulatory response to compensate for metabolic alterations in dementia risk. These data suggest that the relationship between cerebral blood flow and sedentary time is different in *APOE ε4* carriers and noncarriers and that sedentary time may act as a behavioral risk factor for cerebral blood flow dysregulation in those at genetic risk for developing AD.

Types of physical activity other than cardiovascular have also been shown to help improve cognitive function. Strength training frequency of at least once per week was associated with greater cerebrovascular perfusion in older women compared with those who those who did not engage in strength-training activities.<sup>50</sup> A 12-month long, twice-weekly resistance training program in elderly women found functional changes in the regions of the cerebral cortex, most strikingly in the left middle temporal gyrus and the left anterior insula to the lateral orbital frontal cortex, associated with improved hemodynamics and response inhibition based on the Flanker test performance.<sup>51</sup> In addition, a 12-month randomized trial of exercise, including both cardiovascular and coordination training, in older adults showed that improved motor fitness was associated with retained or improved hippocampal volumes.<sup>52</sup>

**Brain Tissue Integrity.** Life-long aerobic fitness in a small number of elderly athletes was also associated with findings of reduced white matter hyperintensities by 83% compared with sedentary individuals and higher fractional anisotropy within multiple

white matter tracts related to motor control and coordination.<sup>53</sup> White matter hyperintensities are a marker of vascular damage. Active exercise in the elderly is associated with lower mean diffusivity in the cingulate cortex and medial temporal lobe, suggestive of improved microstructural integrity within memory and executive function networks.<sup>54</sup> A 1-year exercise program showed a promising association between improved fitness and increased white matter integrity in the frontal and temporal lobes and improved short-term memory, though the cognitive improvements were not independently associated with imaging findings.<sup>55</sup> Improvements in temporal lobe connectivity are associated with changes in levels of serum growth factors such as brain-derived neurotrophic factor, vascular endothelial growth factor, and insulin-like growth factor-1; these molecules may serve as biomarkers for neurologic function and may underlie the biochemical regulation of white matter plasticity.<sup>46,56</sup>

### **Molecular Imaging**

Emerging evidence suggests that higher levels of physical exercise/fitness are associated with reduced amyloid  $A\beta$  burden<sup>57-59</sup> and potentially lowered intracellular  $\tau$  protein<sup>58</sup>; however, there are some null findings.<sup>60,61</sup> A recent study<sup>59</sup> aimed to see if plasma  $A\beta$  and  $A\beta$  brain deposition were associated with physical activity levels and whether these associations differed between carriers and noncarriers of the *APOE*  $\epsilon 4$  allele. Five-hundred forty-six cognitively intact participants (60–95 years of age) were included in these analyses, with physical activity assessed by questionnaire. A subgroup ( $n = 116$ ) underwent <sup>11</sup>C Pittsburgh compound-B positron-emission tomography scanning to quantify brain amyloid load. After stratification of the cohort based on *APOE*  $\epsilon 4$  allele carriage, it was evident that only noncarriers received the benefit of reduced plasma  $A\beta$  from physical activity. Conversely, lower levels of Pittsburgh compound-B were observed in higher exercising *APOE*  $\epsilon 4$  carriers. Lower plasma  $A\beta_{1-42/1-40}$  and brain amyloid were observed in those reporting higher levels of physical activity.

Another recent study<sup>62</sup> explored whether engagement in physical activity might favorably alter the age-dependent evolution of AD-related brain and cognitive changes in a cohort of at-risk, late-middle-aged adults. In this study, 317 enrollees underwent an MR imaging acquisition; a subset also underwent <sup>11</sup>C Pittsburgh compound-B PET ( $n = 186$ ) and [<sup>18</sup>F] fluorodeoxyglucose PET ( $n = 152$ ). There were significant age  $\times$  physical activity interactions for  $A\beta$  burden, glucose metabolism, and hippocampus volume. This finding suggested that with advancing age, physically active individuals exhibited a lesser degree of biomarker alterations compared with the physically inactive ones.

## **DISCUSSION**

### **Summary**

Overall, the results from this work highly suggest that the effects of lifestyle factors on cognitive function in aging act through impact on brain structure and function. Neuroimaging studies increasingly reveal structural and functional brain changes in relation to lifestyle factors that translate to measurable cognitive differences. This finding implies that these quantitative neuroimaging metrics

may be effective surrogate markers that can be utilized in trials or can help identify novel pathways for intervention.

### **Clinical and Public Health Implications**

There are some more immediate clinical implications for this field. Two relevant areas include rapid, automated quantitation of brain volume.<sup>63</sup> This provides a relatively inexpensive means to track brain atrophy and the effects of lifestyle interventions; the lower cost compared with analysis by neuroradiologists may make this more available to the community. Additionally, the need for lifestyle modification advice and interventions for adult and late-life individuals is highly relevant to this field, given their noted effects on the brain. The global mental health implications of neuroscience were more broadly outlined recently.<sup>64</sup>

### **Future Directions**

In this review, we have focused on obesity and physical activity and their effects on the brain. We are aware of a number of other lifestyle factors that require investigation across the neuroimaging modalities. For example, more recent studies have begun to parse out the potential effects of aerobic, resistance, and coordinative exercises and dual-task interventions in improving structural, functional, and cognitive aspects of aging.<sup>65</sup> Other lifestyle factors that may positively affect the brain include mind-body therapies (eg, yoga, qi gong, tai chi<sup>6</sup>), supplements (eg,  $\omega$ -3 fatty acids,<sup>66</sup> flavonols<sup>67</sup>), stress-reduction techniques (eg, Mindfulness-Based Stress Reduction<sup>6</sup>), sleep-modification strategies,<sup>9</sup> and dietary interventions (eg, fish consumption,<sup>15</sup> Mediterranean diet<sup>68</sup>). Other lifestyle factors that impact the brain include smoking, alcohol consumption, sleep, and hypertension. Continuing this work is critical for the development of treatment plans and may affect health care policy and personal philosophies on preventive and therapeutic lifestyle modification. By taking a multifaceted approach to lifestyle modification, one may reap additive or synergistic benefits, even at an early age.

Future studies may help elucidate the mechanism underlying cognitive improvements and identify target populations in which a longitudinal regimen of nonpharmacologic lifestyle modifications may yield significant health benefits. Furthermore, the lifestyle modification may be tailored to individuals with specific illnesses or genetic predispositions with a feasible, preventive goal in mind. Most important, there are coexisting lifestyle factors and a relative lack of premorbid conditions associated with a healthy lifestyle that may act as confounds. These must be carefully considered in future studies.

Developing literature is exploring the role of preventive neuroradiology in other psychiatric disorders. In depression, a meta-analysis confirmed a direct correlation between increasing depressive episode numbers and decreased hippocampal volume.<sup>69</sup> The hippocampus is, therefore, a potential target for preventive interventions. In schizophrenia, a group of ultra-high-risk subjects was followed longitudinally with structural MR imaging.<sup>70</sup> This study found both groups of subjects who subsequently developed psychosis (schizophrenia and affective psychosis) showed reductions in the frontal cortex relative to ultra-high-risk subjects who did not develop psychosis. The subgroup that subsequently developed schizophrenia also showed smaller volumes in the pa-

rietal cortex and, at trend level, in the temporal cortex, whereas those who developed an affective psychosis had significantly smaller subgenual cingulate volumes. This finding also raises targets for preventive interventions.

In preventive neuroradiology, imaging doctors act as actionable information consultants to both referring physicians and their patients in delivering the added value of quantitative neuroimaging. For example, if a neuroradiologist can provide quantitative measurements of hippocampal volume to a geriatric psychiatrist, thereby identifying significant hippocampal volume decrease in a patient with subtle memory loss, it gives that referring physician improved confidence as to the potential etiology of patient symptoms and subsequent management. Such actionable information can also be used to engage patients in brain-directed lifestyle programs that can then be reassessed with a combination of clinical evaluations and follow-up quantitative neuroimaging.<sup>71</sup> In such a new clinic model, neuroradiologists can act as visible team members for improving patient outcomes. This aspect of preventive neuroradiology is also an illustrative example of value-based imaging that is promoted as important for the future of radiology.<sup>72</sup>

Disclosures: Cyrus A. Raji—UNRELATED: Consultancy: Brainreader ApS, Change Your Brain Change Your Life Foundation. Dale E. Bredsen—UNRELATED: Employment: Muses Labs. Steven Moylan—UNRELATED: Employment: Barwon Health (clinical psychiatrist work); Other: Deakin University, Comments: employed as a clinical lecturer. Meng Law—RELATED: Grant: Toshiba\*; Consulting Fee or Honorarium: Guebert; Consultancy: Bracco.\* Gary Small—UNRELATED: Consultancy: Forum Pharmaceuticals,\* Herbalife,\* Novartis,\* Lilly,\* Pfizer,\* Janssen\*; Grants/Grants Pending: Pom Wonderful\*; Payment for Lectures (including service on Speakers Bureaus): Novartis\*; Patents (planned, pending or issued): FDDNP-PET; Royalties: HarperCollins, Workman Publishing Company, NewsMax Media; Stock/Stock Options: TauMark. Paul M. Thompson—RELATED: Grant: National Institutes of Health grants.\* Dan H. Silverman—OTHER RELATIONSHIPS: Dr Dan Silverman is the inventor of NeuroQ, which is now licensed and sold separately by SynterMed (<http://www.syntermed.com/>). Bernhard T. Baune—UNRELATED: Board Membership: Lundbeck; Employment: University of Adelaide; Grants/Grants Pending: National Health and Medical Research Council Australia; Payment for Lectures (including service on Speakers Bureaus): Lundbeck. Arthur W. Toga—RELATED: Grant: National Institute of Biomedical Imaging and Bioengineering,\* National Institutes of Health,\* Comments: Laboratory of Neuro Imaging-Resource, Award No. P41EB015922; The Alzheimer's Disease Neuroimaging Initiative, Award No. U01AG024904. \*Money paid to the institution.

## REFERENCES

- Erickson KI, Creswell JD, Verstynen TD, et al. **Health neuroscience: defining a new field.** *Curr Dir Psychol Sci* 2014;23:446–53
- United Nations, Department of Economic and Social Affairs, Population Division. *World Population Ageing 2013.* ST/ESA/SER.A/348. New York: United Nations; 2013
- Prince M, Prina M, Guerchet M; Alzheimer's Disease International. *World Alzheimer Report 2013: Journey of Caring—An Analysis of Long-Term Care for Dementia.* London: Alzheimer's Disease International; 2013
- Selkoe DJ. **Preventing Alzheimer's disease.** *Science* 2012;337:1488–92
- Barnes DE, Yaffe K. **The projected effect of risk factor reduction on Alzheimer's disease prevalence.** *Lancet Neurol* 2011;10:819–28
- Eyre HA, Baune BT. **Assessing for unique immunomodulatory and neuroplastic profiles of physical activity subtypes: a focus on psychiatric disorders.** *Brain Behav Immun* 2014;39:42–55
- Varteresian T, Lavretsky H. **Natural products and supplements for geriatric depression and cognitive disorders: an evaluation of the research.** *Curr Psychiatry Rep* 2014;16:456
- Wells RE, Kerr CE, Wolkin J, et al. **Meditation for adults with mild cognitive impairment: a pilot randomized trial.** *J Am Geriatr Soc* 2013;61:642–45
- Coogan AN, Schutová B, Husung S, et al. **The circadian system in Alzheimer's disease: disturbances, mechanisms, and opportunities.** *Biol Psychiatry* 2013;74:333–39
- Di Marco LY, Marzo A, Muñoz-Ruiz M, et al. **Modifiable lifestyle factors in dementia: a systematic review of longitudinal observational cohort studies.** *J Alzheimers Dis* 2014;42:119–35
- Hua X, Leow AD, Parikshak N, et al; Alzheimer's Disease Neuroimaging Initiative. **Tensor-based morphometry as a neuroimaging biomarker for Alzheimer's disease: an MRI study of 676 AD, MCI, and normal subjects.** *Neuroimage* 2008;43:458–69
- Mueller SG, Weiner MW, Thal LJ, et al. **The Alzheimer's Disease Neuroimaging Initiative.** *Neuroimaging Clin N Am* 2005;15:869–77, xi–xii
- DeCarli C, Mungas D, Harvey D, et al. **Memory impairment, but not cerebrovascular disease, predicts progression of MCI to dementia.** *Neurology* 2004;63:220–27
- Morra JH, Tu Z, Apostolova LG, et al; Alzheimer's Disease Neuroimaging Initiative. **Automated mapping of hippocampal atrophy in 1-year repeat MRI data from 490 subjects with Alzheimer's disease, mild cognitive impairment, and elderly controls.** *Neuroimage* 2009;45:S3–15
- Raji CA, Erickson KI, Lopez OL, et al. **Regular fish consumption and age-related brain gray matter loss.** *Am J Prev Med* 2014;47:444–51
- Ho AJ, Raji CA, Becker JT, et al. **The effects of physical activity, education, and body mass index on the aging brain.** *Hum Brain Mapp* 2011;32:1371–82
- Beydoun MA, Beydoun HA, Wang Y. **Obesity and central obesity as risk factors for incident dementia and its subtypes: a systematic review and meta-analysis.** *Obes Rev* 2008;9:204–18
- Raji CA, Ho AJ, Parikshak NN, et al. **Brain structure and obesity.** *Hum Brain Mapp* 2010;31:353–64
- Moylan S, Berk M, Dean OM, et al. **Oxidative & nitrosative stress in depression: why so much stress?** *Neurosci Biobehav Rev* 2014;45:46–62
- Yaffe K, Haan M, Blackwell T, et al. **Metabolic syndrome and cognitive decline in elderly Latinos: findings from the Sacramento Area Latino Study of Aging study.** *J Am Geriatr Soc* 2007;55:758–62
- Poirier P, Després JP, Bertrand OF. **Identifying which patients with diabetes should be tested for the presence of coronary artery disease—the importance of baseline electrocardiogram and exercise testing.** *Can J Cardiol* 2006;22(suppl A):9A–15A
- Bobb JF, Schwartz BS, Davatzikos C, et al. **Cross-sectional and longitudinal association of body mass index and brain volume.** *Hum Brain Mapp* 2014;35:75–88
- Boyle CP, Raji CA, Erickson KI, et al. **Physical activity, body mass index, and brain atrophy in Alzheimer's disease.** *Neurobiol Aging* 2015;36(suppl 1):S194–202
- Driscoll I, Beydoun MA, An Y, et al. **Midlife obesity and trajectories of brain volume changes in older adults.** *Hum Brain Mapp* 2012;33:2204–10
- Marks BL, Madden DJ, Bucur B, et al. **Role of aerobic fitness and aging on cerebral white matter integrity.** *Ann N Y Acad Sci* 2007;1097:171–74
- Stanek KM, Grieve SM, Brickman AM, et al. **Obesity is associated with reduced white matter integrity in otherwise healthy adults.** *Obesity* 2011;19:500–04
- Bondi MW, Houston WS, Eyster LT, et al. **fMRI evidence of compensatory mechanisms in older adults at genetic risk for Alzheimer disease.** *Neurology* 2005;64:501–08
- Braskie MN, Small GW, Bookheimer SY. **Vascular health risks and fMRI activation during a memory task in older adults.** *Neurobiol Aging* 2010;31:1532–42
- Gonzales MM, Tarumi T, Miles SC, et al. **Insulin sensitivity as a mediator of the relationship between BMI and working memory-related brain activation.** *Obesity* 2010;18:2131–37
- Volkow ND, Wang GJ, Telang F, et al. **Inverse association between**

- BMI and prefrontal metabolic activity in healthy adults.** *Obesity* 2009;17:60–65
31. Gonzales MM, Kaur S, Eagan DE, et al. **Central adiposity and the functional magnetic resonance imaging response to cognitive challenge.** *Int J Obes (Lond)* 2014;38:1193–99
  32. Nagamatsu LS, Handy TC, Hsu CL, et al. **Resistance training promotes cognitive and functional brain plasticity in seniors with probable mild cognitive impairment.** *Arch Intern Med* 2012;172:666–68
  33. Gates N, Fiatarone Singh MA, Sachdev PS, et al. **The effect of exercise training on cognitive function in older adults with mild cognitive impairment: a meta-analysis of randomized controlled trials.** *Am J Geriatr Psychiatry* 2013;21:1086–97
  34. Hamer M, Chida Y. **Physical activity and risk of neurodegenerative disease: a systematic review of prospective evidence.** *Psychol Med* 2009;39:3–11
  35. Bherer L, Erickson KI, Liu-Ambrose T. **A review of the effects of physical activity and exercise on cognitive and brain functions in older adults.** *J Aging Res* 2013;2013:657508
  36. Barnes DE, Whitmer RA, Yaffe K. **Physical activity and dementia: the need for prevention trials.** *Exerc Sport Sci Rev* 2007;35:24–29
  37. de Rezende LF, Rey-López JP, Matsudo VK, et al. **Sedentary behavior and health outcomes among older adults: a systematic review.** *BMC Public Health* 2014;14:333
  38. Profenno LA, Porsteinsson AP, Faraone SV. **Meta-analysis of Alzheimer's disease risk with obesity, diabetes, and related disorders.** *Biol Psychiatry* 2010;67:505–12
  39. Kennelly SP, Lawlor BA, Kenny RA. **Blood pressure and the risk for dementia: a double edged sword.** *Ageing Res Rev* 2009;8:61–70
  40. Voss MW, Carr LJ, Clark R, et al. **Revenge of the "sit" II: does lifestyle impact neuronal and cognitive health through distinct mechanisms associated with sedentary behavior and physical activity?** *Ment Health Physical Act* 2014;7:9–24
  41. Colcombe SJ, Kramer AF, McAuley E, et al. **Neurocognitive aging and cardiovascular fitness: recent findings and future directions.** *J Mol Neurosci* 2004;24:9–14
  42. Colcombe SJ, Erickson KI, Scalf PE, et al. **Aerobic exercise training increases brain volume in aging humans.** *J Gerontol A Biol Sci Med Sci* 2006;61:1166–70
  43. Erickson KI, Prakash RS, Voss MW, et al. **Aerobic fitness is associated with hippocampal volume in elderly humans.** *Hippocampus* 2009;19:1030–39
  44. Makizako H, Liu-Ambrose T, Shimada H, et al. **Moderate-intensity physical activity, hippocampal volume, and memory in older adults with mild cognitive impairment.** *J Gerontol A Biol Sci Med Sci* 2015;70:480–86
  45. Erickson KI, Voss MW, Prakash RS, et al. **Exercise training increases size of hippocampus and improves memory.** *Proc Natl Acad Sci U S A* 2011;108:3017–22
  46. Kirk-Sanchez NJ, McGough EL. **Physical exercise and cognitive performance in the elderly: current perspectives.** *Clin Interv Aging* 2014;9:51–62
  47. Fein G, Di Sclafani V, Tanabe J, et al. **Hippocampal and cortical atrophy predict dementia in subcortical ischemic vascular disease.** *Neurology* 2000;55:1626–35
  48. Mueller SG, Schuff N, Yaffe K, et al. **Hippocampal atrophy patterns in mild cognitive impairment and Alzheimer's disease.** *Hum Brain Mapp* 2010;31:1339–47
  49. Zlatar ZZ, Wierenga CE, Bangen KJ, et al. **Increased hippocampal blood flow in sedentary older adults at genetic risk for Alzheimer's disease.** *J Alzheimers Dis* 2014;41:809–17
  50. Xu X, Jerskey BA, Cote DM, et al. **Cerebrovascular perfusion among older adults is moderated by strength training and gender.** *Neurosci Lett* 2014;560:26–30
  51. Liu-Ambrose T, Nagamatsu LS, Voss MW, et al. **Resistance training and functional plasticity of the aging brain: a 12-month randomized controlled trial.** *Neurobiol Aging* 2012;33:1690–98
  52. Niemann C, Godde B, Voelcker-Rehage C. **Not only cardiovascular, but also coordinative exercise increases hippocampal volume in older adults.** *Front Aging Neurosci* 2014;6:170
  53. Tseng BY, Gundapuneedi T, Khan MA, et al. **White matter integrity in physically fit older adults.** *Neuroimage* 2013;82:510–16
  54. Tian Q, Erickson KI, Simonsick EM, et al. **Physical activity predicts microstructural integrity in memory-related networks in very old adults.** *J Gerontol A Biol Sci Med Sci* 2014;69:1284–90
  55. Voss MW, Heo S, Prakash RS, et al. **The influence of aerobic fitness on cerebral white matter integrity and cognitive function in older adults: results of a one-year exercise intervention.** *Hum Brain Mapp* 2013;34:2972–85
  56. Voss MW, Erickson KI, Prakash RS, et al. **Neurobiological markers of exercise-related brain plasticity in older adults.** *Brain Behav Immun* 2013;28:90–99
  57. Head D, Bugg JM, Goate AM, et al. **Exercise engagement as a moderator of the effects of APOE genotype on amyloid deposition.** *Arch Neurol* 2012;69:636–43
  58. Liang KY, Mintun MA, Fagan AM, et al. **Exercise and Alzheimer's disease biomarkers in cognitively normal older adults.** *Ann Neurol* 2010;68:311–18
  59. Brown BM, Peiffer JJ, Taddei K, et al. **Physical activity and amyloid- $\beta$  plasma and brain levels: results from the Australian Imaging, Biomarkers and Lifestyle Study of Ageing.** *Mol Psychiatry* 2013;18:875–81
  60. Vemuri P, Lesnick TG, Przybelski SA, et al. **Effect of lifestyle activities on Alzheimer disease biomarkers and cognition.** *Ann Neurol* 2012;72:730–38
  61. Bugg JM, Head D. **Exercise moderates age-related atrophy of the medial temporal lobe.** *Neurobiol Aging* 2011;32:506–14
  62. Okonkwo OC, Schultz SA, Oh JM, et al. **Physical activity attenuates age-related biomarker alterations in preclinical AD.** *Neurology* 2014;83:1753–60
  63. Rathakrishnan BG, Doraiswamy PM, Petrella JR. **Science to practice: translating automated brain MRI volumetry in Alzheimer's disease from research to routine diagnostic use in the work-up of dementia.** *Front Neurol* 2014;4:216
  64. Stein DJ, He Y, Phillips A, et al. **Global mental health and neuroscience: potential synergies.** *Lancet Psychiatry* 2015;2:178–85
  65. Gregory MA, Gill DP, Petrella RJ. **Brain health and exercise in older adults.** *Curr Sports Med Rep* 2013;12:256–71
  66. Cederholm T, Salem N Jr, Palmblad J.  **$\omega$ -3 fatty acids in the prevention of cognitive decline in humans.** *Adv Nutr* 2013;4:672–76
  67. Brickman AM, Khan UA, Provenzano FA, et al. **Enhancing dentate gyrus function with dietary flavanols improves cognition in older adults.** *Nat Neurosci* 2014;17:1798–803
  68. Mosconi L, Murray J, Tsui WH, et al. **Mediterranean diet and magnetic resonance imaging-assessed brain atrophy in cognitively normal individuals at risk for Alzheimer's disease.** *J Prev of Alzheimers Dis* 2014;1:23–32
  69. Videbech P, Ravnkilde B. **Hippocampal volume and depression: a meta-analysis of MRI studies.** *Am J Psychiatry* 2004;161:1957–66
  70. Dazzan P, Soulsby B, Mechelli A, et al. **Volumetric abnormalities predating the onset of schizophrenia and affective psychoses: an MRI study in subjects at ultrahigh risk of psychosis.** *Schizophr Bull* 2012;38:1083–91
  71. MacIntosh BJ, Swardfager W, Crane DE, et al. **Cardiopulmonary fitness correlates with regional cerebral grey matter perfusion and density in men with coronary artery disease.** *PLoS One* 2014;9:e91251
  72. Norbash A, Bluth E, Lee CI, et al. **Radiologist manpower considerations and Imaging 3.0: effort planning for value-based imaging.** *J Am Coll Radiol* 2014;11:953–58