

UC Merced

UC Merced Previously Published Works

Title

Genome sequence of Ensifer medicae Di28; an effective N₂-fixing microsymbiont of Medicago murex and M. polymorpha

Permalink

<https://escholarship.org/uc/item/7nc030rz>

Journal

Environmental Microbiome, 9(1)

ISSN

2524-6372

Authors

Garau, Giovanni

Terpolilli, Jason

Hill, Yvette

et al.

Publication Date

2014

DOI

10.1186/1944-3277-9-4

Peer reviewed

SHORT GENOME REPORT

Open Access

Genome sequence of *Ensifer medicae* Di28; an effective N₂-fixing microsymbiont of *Medicago murex* and *M. polymorpha*

Giovanni Garau¹, Jason Terpolilli², Yvette Hill², Rui Tian², John Howieson², Lambert Bräu³, Lynne Goodwin⁴, James Han⁵, TBK Reddy⁵, Marcel Huntemann⁵, Amrita Pati⁶, Tanja Woyke⁵, Konstantinos Mavromatis⁶, Victor Markowitz⁶, Natalia Ivanova⁴, Nikos Kyrpides^{4,7} and Wayne Reeve^{2*}

Abstract

Ensifer medicae Di28 is an aerobic, motile, Gram-negative, non-spore-forming rod that can exist as a soil saprophyte or as a legume microsymbiont of *Medicago* spp. Di28 was isolated in 1998 from a nodule recovered from the roots of *M. polymorpha* growing in the south east of Sardinia (Italy). Di28 is an effective microsymbiont of the annual forage legumes *M. polymorpha* and *M. murex* and is capable of establishing a partially effective symbiotic association with the perennial *M. sativa*. Here we describe the features of *E. medicae* Di28, together with genome sequence information and its annotation. The 6,553,624 bp standard draft genome is arranged into 104 scaffolds of 104 contigs containing 6,394 protein-coding genes and 75 RNA-only encoding genes. This rhizobial genome is one of 100 sequenced as part of the DOE Joint Genome Institute 2010 Genomic Encyclopedia for Bacteria and Archaea-Root Nodule Bacteria (GEBA-RNB) project.

Keywords: Root-nodule bacteria, Nitrogen fixation, Rhizobia, *Alphaproteobacteria*

Introduction

Legumes are key components of sustainable agricultural systems owing to their ability to form nitrogen (N₂)-fixing symbioses with specific soil bacteria referred to as rhizobia (or root nodule bacteria). These rhizobia are housed within legume root nodules, where they receive a source of carbon from the legume and in return supply the host with reduced nitrogen (N) in the form of ammonia [1]. The provision of this bioavailable N to the host fuels legume growth and development without the requirement for supplementation with industrially synthesized N-based fertilizers. Furthermore, some of this biologically fixed N remains in the soil after plant harvest or senescence, resulting in an increase in soil fertility. Growing legumes in rotation with a cereal crop or as a source of forage or fodder is therefore an environmentally sustainable way of improving soil fertility and boosting agricultural productivity [2].

The legume genus *Medicago* is of prime importance globally as a source of forage or fodder. The perennial *M. sativa* (alfalfa or lucerne) is the most widely cultivated member of this genus, with over 35 million hectares grown annually. Other important species include the annuals *M. polymorpha* (burr medic), *M. truncatula*, (barrel medic) and *M. murex* [2-4]. In order to maximise the agronomic success of these forage legumes, it is imperative that they are well-matched with an effective N₂-fixing microsymbiont [5,6]. While *Ensifer meliloti* and *E. medicae* are two species of rhizobia both able to nodulate and fix N₂ with *Medicago* spp., differences exist between these species with regard to their host range and effectiveness. Specifically, *E. medicae* is an effective N₂-fixing symbiont of the acid tolerant annual *Medicago* spp. (e.g. *M. polymorpha*, *M. murex* and *M. arabica*), whereas *E. meliloti* adapted to nodulate and fix N₂ with the neutral or slightly alkaline-favoring *M. truncatula*, *M. littoralis* and *M. tornata* [7-9].

The strain *E. medicae* Di28 was isolated in 1998 from a nodule collected from *M. polymorpha* growing in the south east of Sardinia (Italy) [10]. In common with many

* Correspondence: W.Reeve@murdoch.edu.au

²Centre for Rhizobium Studies, Murdoch University, Murdoch, WA, Australia
Full list of author information is available at the end of the article

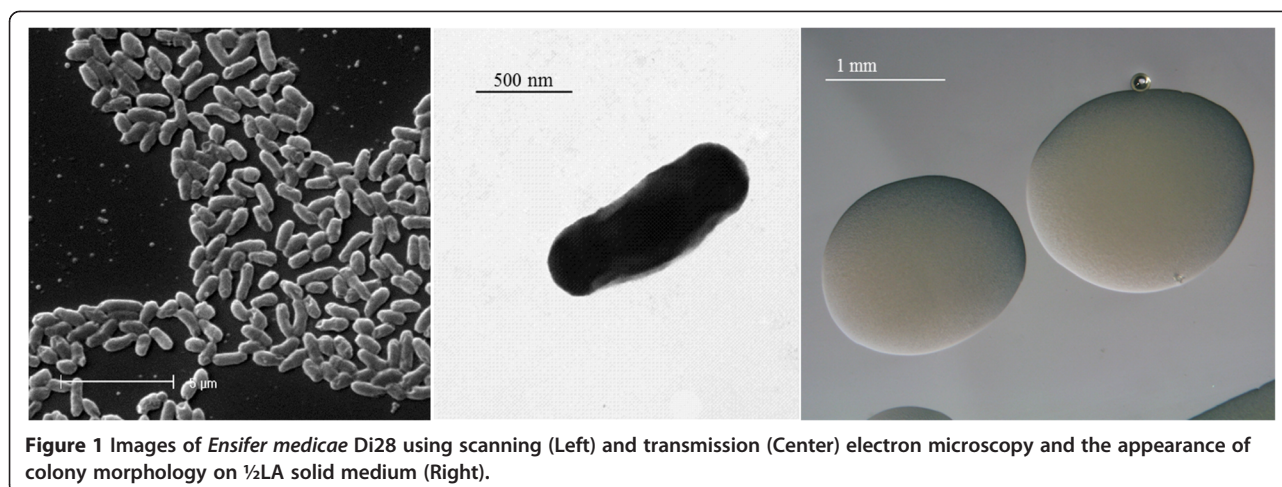
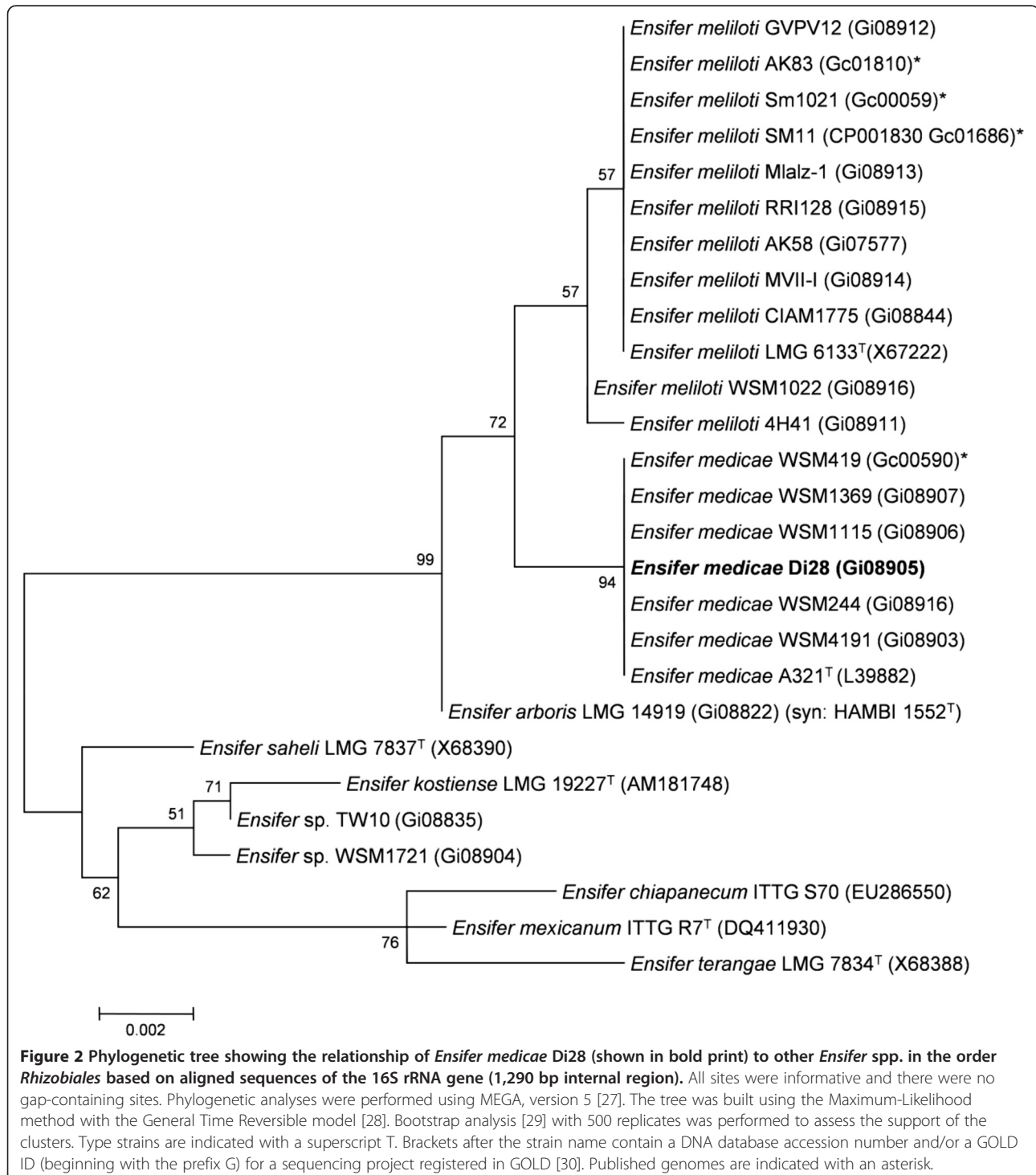


Table 1 Classification and general features of *Ensifer medicae* Di28 according to the MIGS recommendations [15]

MIGS ID	Property	Term	Evidence code
	Current classification	Domain <i>Bacteria</i>	TAS [16]
		Phylum <i>Proteobacteria</i>	TAS [17]
		Class <i>Alphaproteobacteria</i>	TAS [18,19]
		Order <i>Rhizobiales</i>	TAS [19,20]
		Family <i>Rhizobiaceae</i>	TAS [21,22]
		Genus <i>Ensifer</i>	TAS [23-25]
		Species <i>Ensifer medicae</i>	TAS [24]
		Strain Di28	
	Gram stain	Negative	IDA
	Cell shape	Rod	IDA
	Motility	Motile	IDA
	Sporulation	Non-sporulating	NAS
	Temperature range	Mesophile	NAS
	Optimum temperature	28°C	IDA
	Salinity	Non-halophile	NAS
MIGS-22	Oxygen requirement	Aerobic	TAS [8]
	Carbon source	Varied	NAS
	Energy source	Chemoorganotroph	NAS
MIGS-6	Habitat	Soil, root nodule, on host	NAS
MIGS-15	Biotic relationship	Free living, symbiotic	TAS [8]
MIGS-14	Pathogenicity	Non-pathogenic	NAS
	Biosafety level	1	TAS [26]
	Isolation	Root nodule	TAS [10]
MIGS-4	Geographic location	Sardinia, Italy	TAS [10]
MIGS-5	Soil collection date	March-May 1998	TAS [10]
MIGS-4.1	Longitude	9.517034	TAS [10]
MIGS-4.2	Latitude	39.11260	TAS [10]
MIGS-4.3	Depth	0-10 cm	TAS [10]
MIGS-4.4	Altitude	10 m above sea level	TAS [10]

E. medicae strains, *E. medicae* Di28 is only moderately effective as a microsymbiont with *M. sativa* [8]. However, Di28 is capable of effective N₂ fixation with *M. murex* and *M. polymorpha* [8]. Therefore, this strain is a valuable resource in improving our understanding of the genetic determinants of highly efficient N₂-fixing

symbioses and host range, which would complement information already gained from the sequencing of the genomes of other *Medicago*-nodulating microsymbionts [11-13]. Here we present a summary classification and a set of general features for this microsymbiont together with a description of its genome sequence and annotation.



Organism information

Classification and general features

E. medicae Di28 is a motile, Gram-negative rod (Figure 1 Left and Center) in the order *Rhizobiales* of the class *Alphaproteobacteria*. It is fast growing, forming colonies within 3–4 days when grown on half strength Lupin Agar (½LA) [14] at 28°C. Colonies on ½LA are white-opaque, slightly domed and moderately mucoid with smooth margins (Figure 1 Right).

Minimum Information about the Genome Sequence (MIGS) is provided in Table 1. Figure 2 shows the phylogenetic neighborhood of *E. medicae* Di28 in a 16S rRNA sequence based tree. This strain shares 100% sequence identity (over 1,290 bp) to the 16S rRNA of the *E. medicae* A321 type strain and the fully sequenced *E. medicae* WSM419 [11].

Evidence codes – IDA: Inferred from Direct Assay; TAS: Traceable Author Statement (i.e., a direct report exists in the literature); NAS: Non-traceable Author Statement (i.e., not directly observed for the living, isolated sample, but based on a generally accepted property for the species, or anecdotal evidence). These evidence codes are from the Gene Ontology project [31].

Symbiotaxonomy

E. medicae strain Di28 was isolated during a germplasm collection carried out in 1998 [10] from a nodule collected from the annual *M. polymorpha* growing near Villasimius, South East Sardinia (Italy). The site of collection contained ruderal plant species, with soil properties of 1.69% (w/w) organic matter, 0.09% (w/w) total nitrogen and a near-neutral pH. Along with *M. polymorpha*, other *Medicago* spp. present at the sampling site were *M. rugosa*, *M. littoralis* and *M. rigidula*. Di28 forms nodules and fixes N₂ with *M. sativa*, *M. polymorpha* and *M. murex*. However, while Di28 is fully effective for N₂ fixation with *M. murex* and *M. polymorpha*, it is only partially effective as a microsymbiont of *M. sativa*.

Genome sequencing and annotation information

Genome project history

This organism was selected for sequencing on the basis of its environmental and agricultural relevance to issues in global carbon cycling, alternative energy production, and biogeochemical importance, and is part of the Community Sequencing Program at the U.S. Department of Energy, Joint Genome Institute (JGI) for projects of relevance to agency missions. The genome project is deposited in the Genomes OnLine Database [30] and a standard draft genome sequence in IMG. Sequencing, finishing and annotation were performed by the JGI. A summary of the project information is shown in Table 2.

Table 2 Genome sequencing project information for *E. medicae* Di28

MIGS ID	Property	Term
MIGS-31	Finishing quality	Standard draft
MIGS-28	Libraries used	One Illumina fragment library
MIGS-29	Sequencing platforms	Illumina HiSeq 2000
MIGS-31.2	Sequencing coverage	Illumina: 374x
MIGS-30	Assemblers	Velvet version 1.1.04; Allpaths-LG version r39750
MIGS-32	Gene calling methods	Prodigal 1.4
	Genbank accession	ATTL000000000
	Genbank Registration Date	December 12, 2013
	GOLD ID	Gi08905
	NCBI project ID	162987
	Database: IMG	2513237089
	Project relevance	Symbiotic N ₂ fixation, agriculture

Growth conditions and genomic DNA preparation

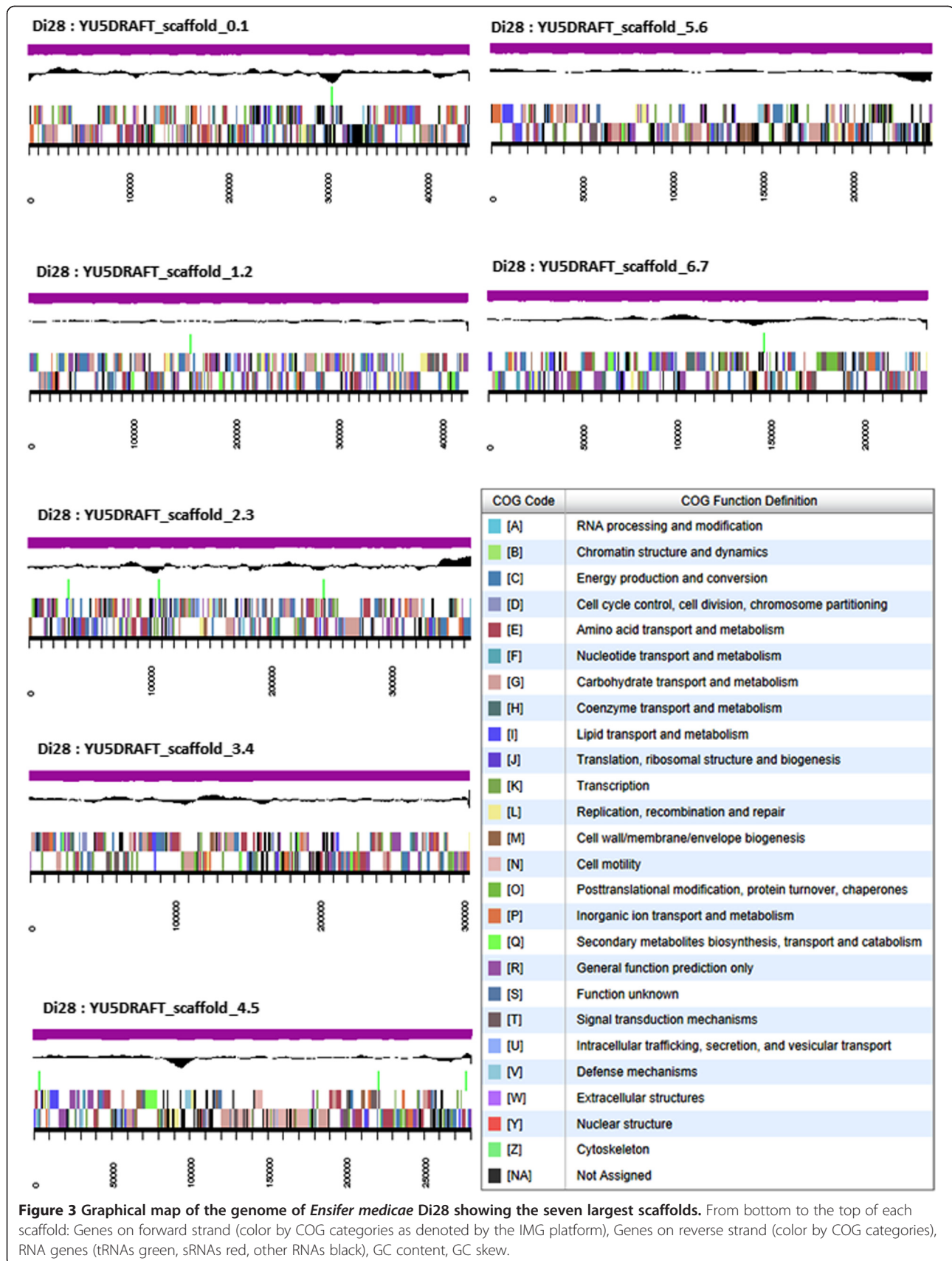
E. medicae Di28 was cultured to mid logarithmic phase in 60 ml of TY rich media [32] on a gyratory shaker at 28°C at 250 rpm. DNA was isolated from the cells using a CTAB (Cetyl trimethyl ammonium bromide) bacterial genomic DNA isolation method [33].

Genome sequencing and assembly

The genome of *Ensifer medicae* Di28 was sequenced at the Joint Genome Institute (JGI) using Illumina technology [34]. An Illumina standard paired-end library was constructed and sequenced using the Illumina HiSeq

Table 3 Genome Statistics for *Ensifer medicae* Di28

Attribute	Value	% of total
Genome size (bp)	6,553,624	100.00
DNA coding region (bp)	5,702,238	87.03
DNA G + C content (bp)	4,007,255	61.15
Number of scaffolds	104	
Number of contigs	104	
Total gene	6,469	100.00
RNA genes	75	1.16
rRNA operons	1	0.02
Protein-coding genes	6,394	98.84
Genes with function prediction	5,088	78.65
Genes assigned to COGs	5,052	78.10
Genes assigned Pfam domains	5,259	81.30
Genes with signal peptides	534	8.25
Genes with transmembrane helices	1,449	22.40
CRISPR repeats	0	



2000 platform which generated 16,333,536 reads totaling 2,450 Mbp.

All general aspects of library construction and sequencing performed at the JGI can be found at DOE Joint Genome Institute user homepage. All raw Illumina sequence data was passed through DUK, a filtering program developed at JGI, which removes known Illumina sequencing and library preparation artifacts (Mingkun, L., Copeland, A. and Han, J., unpublished). The following steps were then performed for assembly: (1) filtered Illumina reads were assembled using Velvet [35] (version 1.1.04), (2) 1–3 Kb simulated paired end reads were created from Velvet contigs using wgsim [36], (3) Illumina reads were assembled with simulated read pairs using Allpaths-LG [37] (version r39750). Parameters for assembly steps were: 1) Velvet (velveth: 63 –shortPaired

and velvetg: –veryclean yes –exportFiltered yes –min-contiglth 500 –scaffolding no –covcutoff 10) 2) wgsim (–e 0–1 76–2 76 –r 0 –R 0 –X 0) 3) Allpaths-LG (PrepareAllpathsInputs:PHRED64 = 1 PLOIDY = 1 FRAGCOVER-AGE = 125 JUMPCOVERAGE = 25 LONGJUMPCOV = 50, RunAllpath-sLG: THREADS = 8 RUN = stdshredpairs TARGETS = standard VAPIWARNONLY = True OVERWRITE = True). The final draft assembly contained 104 contigs in 104 scaffolds. The total size of the genome is 6.5 Mbp and the final assembly is based on 2,450 Mbp of Illumina data, which provides an average 374× coverage of the genome.

Genome annotation

Genes were identified using Prodigal [38] as part of the DOE-JGI annotation pipeline [39]. The predicted CDSs were translated and used to search the National Center for Biotechnology Information (NCBI) nonredundant database, UniProt, TIGRFam, Pfam, PRIAM, KEGG, COG, and InterPro databases. The tRNAScanSE tool [40] was used to find tRNA genes, whereas ribosomal RNA genes were found by searches against models of the ribosomal RNA genes built from SILVA [41]. Other non-coding RNAs such as the RNA components of the protein secretion complex and the RNase P were identified by searching the genome for the corresponding Rfam profiles using INFERNAL [42]. Additional gene prediction analysis and manual functional annotation was performed within the Integrated Microbial Genomes (IMG-ER) platform [43].

Genome properties

The genome is 6,553,624 nucleotides with 61.15% GC content (Table 3) and comprised of 104 scaffolds (Figure 3) of 104 contigs. From a total of 6,469 genes, 6,394 were protein encoding and 75 RNA only encoding genes. The majority of genes (78.65%) were assigned a putative function whilst the remaining genes were annotated as hypothetical. The distribution of genes into COGs functional categories is presented in Table 4.

Conclusions

Di28 was isolated from a nodule of *M. polymorpha* found in Sardinian soil of near-neutral pH. The genome size, gene count, GC content and COG profile of Di28 is comparable to that of the sequenced *E. medicae* strains WSM244, WSM419, WSM1115, WSM1369 and WSM4191. Of particular interest is the finding that Di28, WSM244 and WSM1369 have a relatively low pseudogene percentage (0.03-0.06%) in comparison to the other strains (4.29-6.83%). One stand-out feature from the genome of Di28 is the absence of the acid-activated *lpiA* gene (11,32), which is found in all other *E. meliloti* and *E. medicae* strains sequenced to date. Furthermore, the regulatory genes *tcsA*, *trcA* and *fsrR*, which are required for the full acid-activated

Table 4 Number of protein coding genes of *Ensifer medicae* Di28 associated with the general COG functional categories

Code	Gene count	% age	Description
J	188	3.34	Translation, ribosomal structure and biogenesis
A	0	0.00	RNA processing and modification
K	491	8.73	Transcription
L	222	3.95	Replication, recombination and repair
B	1	0.02	Chromatin structure and dynamics
D	40	0.71	Cell cycle control, mitosis and meiosis
Y	0	0.00	Nuclear structure
V	61	1.08	Defense mechanisms
T	226	4.02	Signal transduction mechanisms
M	279	4.96	Cell wall/membrane biogenesis
N	68	1.21	Cell motility
Z	0	0.00	Cytoskeleton
W	1	0.02	Extracellular structures
U	104	1.85	Intracellular trafficking and secretion
O	178	3.16	Posttranslational modification, protein turnover, chaperones
C	339	6.03	Energy production conversion
G	594	10.56	Carbohydrate transport and metabolism
E	630	11.20	Amino acid transport metabolism
F	109	1.94	Nucleotide transport and metabolism
H	192	3.41	Coenzyme transport and metabolism
I	212	3.77	Lipid transport and metabolism
P	286	5.08	Inorganic ion transport and metabolism
Q	160	2.84	Secondary metabolite biosynthesis, transport and catabolism
R	690	12.26	General function prediction only
S	555	9.86	Function unknown
-	1417	21.90	Not in COGS

expression of *lpiA*, are present in all other sequenced *E. medicae* strains, but are absent in Di28. The unique attributes of Di28 in comparison to other *Ensifer* strains, make this an ideal candidate for future work.

Competing interests

The authors declare that they have no competing interests.

Authors' contributions

GG and JH supplied the strain and background information for this project, TR supplied DNA to JGI and performed all imaging, GG and JT drafted the paper, YH performed phylogenetic analysis, WR coordinated the project and all other authors were involved in either sequencing the genome and/or editing the paper. All authors read and approved the final manuscript.

Acknowledgements

This work was performed under the auspices of the US Department of Energy Office of Science, Biological and Environmental Research Program, and by the University of California, Lawrence Berkeley National Laboratory under contract No. DE-AC02-05CH11231, Lawrence Livermore National Laboratory under Contract No. DE-AC52-07NA27344, and Los Alamos National Laboratory under contract No. DE-AC02-06NA25396. We gratefully acknowledge Early Career Research funding for J. Terpolilli awarded by the School of Veterinary and Life Sciences at Murdoch University.

Author details

¹Dipartimento di Agraria, S.T.A.A., University of Sassari, Sassari, Italy. ²Centre for Rhizobium Studies, Murdoch University, Murdoch, WA, Australia. ³School of Life and Environmental Sciences, Deakin University, Deakin, VIC, Australia. ⁴Los Alamos National Laboratory, Bioscience Division, Los Alamos, NM, USA. ⁵DOE Joint Genome Institute, Walnut Creek, CA, USA. ⁶Biological Data Management and Technology Center, Lawrence Berkeley National Laboratory, Berkeley, CA, USA. ⁷Department of Biological Sciences, King Abdulaziz University, Jeddah, Saudi Arabia.

Received: 13 June 2014 Accepted: 16 June 2014

Published: 8 December 2014

References

1. Terpolilli JJ, Hood GA, Poole PS: What determines the efficiency of N₂-fixing *Rhizobium*-Legume symbioses? *Adv Microb Physiol* 2012, **60**:325–89. PubMed <http://dx.doi.org/10.1016/B978-0-12-398264-3.00005-X>.
2. Howieson JG, O'Hara GW, Carr SJ: Changing roles for legumes in Mediterranean agriculture: developments from an Australian perspective. *Field Crops Res* 2000, **65**:107–22. [http://dx.doi.org/10.1016/S0378-4290\(99\)00081-7](http://dx.doi.org/10.1016/S0378-4290(99)00081-7).
3. Radović J, Sokolović D, Marković J: Alfalfa-most important perennial forage legume in animal husbandry. *Biotech Anim Husbandry* 2009, **25**:465–75. <http://dx.doi.org/10.2298/BAH0906465R>.
4. Howieson JG, Ewing MA: Acid tolerance in the *Rhizobium meliloti*-*Medicago* symbiosis. *Aust J Agric Res* 1986, **37**:55–64. <http://dx.doi.org/10.1071/AR9860055>.
5. Sessitsch A, Howieson JG, Perret X, Antoun H, Martinez-Romero E: Advances in *Rhizobium* research. *Crit Rev Plant Sci* 2002, **21**:323–78. <http://dx.doi.org/10.1080/0735-260291044278>.
6. Evans PM, Howieson JG, Nutt BJ: Increased yield and persistence of several annual medic species and *Medicago sativa* by inoculation with selected strains of *Sinorhizobium meliloti* and *S. medicae*. *Aust J Exp Agric* 2005, **45**:217–24. <http://dx.doi.org/10.1071/EA03128>.
7. Rome S, Brunel B, Normand P, Fernandez M, Cleyet-Marel JC: Evidence that two genomic species of *Rhizobium* are associated with *Medicago truncatula*. *Arch Microbiol* 1996, **165**:285–8. PubMed <http://dx.doi.org/10.1007/s002030050328>.
8. Garau G, Reeve WG, Brau L, Yates RJ, James D, Tiwari R, O'Hara GW, Howieson JG: The symbiotic requirements of different *Medicago* spp. suggest the evolution of *Sinorhizobium meliloti* and *S. medicae* with hosts differentially adapted to soil pH. *Plant Soil* 2005, **276**:263–77. <http://dx.doi.org/10.1007/s11104-005-0374-0>.
9. Terpolilli JJ, O'Hara GW, Tiwari RP, Dilworth MJ, Howieson JG: The model legume *Medicago truncatula* A17 is poorly matched for N₂ fixation with the sequenced microsymbiont *Sinorhizobium meliloti* 1021. *New Phytol* 2008, **179**:62–6. PubMed <http://dx.doi.org/10.1111/j.1469-8137.2008.02464.x>.
10. Brundu G, Camarda I, Caredda M, Garau G, Maltoni S, Deiana P: A contribution to the study of the distribution of *Medicago-Sinorhizobium* symbiosis in Sardinia (Italy). *Agricoltura Mediterranea* 2004, **134**:33–48.
11. Reeve W, Chain P, O'Hara G, Ardley J, Nandesena K, Brau L, Tiwari R, Malfatti S, Kiss H, Lapidus A, et al: Complete genome sequence of the *Medicago* microsymbiont *Ensifer (Sinorhizobium) medicae* strain WSM419. *Stand Genomic Sci* 2010, **2**:77–86. PubMed <http://dx.doi.org/10.4056/signs.43526>.
12. Terpolilli J, Hill Y, Tian R, Howieson J, Bräu L, Goodwin L, Han J, Liolios K, Huntemann M, Pati A, et al: Genome sequence of *Ensifer meliloti* strain WSM1022; a highly effective microsymbiont of the model legume *Medicago truncatula* A17. *Stand Genomic Sci* 2013, **9**:315–324.
13. Terpolilli J, Garau G, Hill Y, Tian R, Howieson J, Bräu L, Goodwin L, Han J, Liolios K, Huntemann M, et al: Genome sequence of *Ensifer medicae* strain WSM1369; an effective microsymbiont of the annual legume *Medicago sphaerocarpos*. *Stand Genomic Sci* 2013, **9**:420–430.
14. Howieson JG, Ewing MA, D'antunio MF: Selection for acid tolerance in *Rhizobium meliloti*. *Plant Soil* 1988, **105**:179–88. <http://dx.doi.org/10.1007/BF02376781>.
15. Field D, Garrity G, Gray T, Morrison N, Selengut J, Sterk P, Tatusova T, Thomson N, Allen MJ, Angiuoli SV, et al: Towards a richer description of our complete collection of genomes and metagenomes "Minimum Information about a Genome Sequence" (MIGS) specification. *Nat Biotechnol* 2008, **26**:541–7. PubMed <http://dx.doi.org/10.1038/nbt1360>.
16. Woese CR, Kandler O, Wheelis ML: Towards a natural system of organisms: proposal for the domains Archaea, Bacteria, and Eucarya. *Proc Natl Acad Sci USA* 1990, **87**:4576–9. PubMed <http://dx.doi.org/10.1073/pnas.87.12.4576>.
17. Garrity GM, Bell JA, Lilburn T: Phylum XIV. *Proteobacteria* phyl. nov. In *Bergey's Manual of Systematic Bacteriology, Second Edition, Volume 2, Part B*. Edited by Garrity GM, Brenner DJ, Krieg NR, Staley JT. New York: Springer; 2005: 1.
18. Garrity GM, Bell JA, Lilburn T: Class I. *Alphaproteobacteria* class. In *Bergey's Manual of Systematic Bacteriology, Second ed.* Edited by Garrity GM, Brenner DJ, Krieg NR, Staley JT. New York: Springer - Verlag; 2005.
19. Validation List No. 107. List of new names and new combinations previously effectively, but not validly, published. *Int J Syst Evol Microbiol* 2006, **56**:1–6. PubMed <http://dx.doi.org/10.1099/ijs.0.064188-0>.
20. Kuykendall LD: Order VI: *Rhizobiales* ord. nov. In *Bergey's Manual of Systematic Bacteriology, Second ed.* Edited by Garrity GM, Brenner DJ, Krieg NR, Staley JT. New York: Springer - Verlag; 2005: 324.
21. Skerman VBD, McGowan V, Sneath PHA: Approved lists of bacterial names. *Int J Syst Bacteriol* 1980, **30**:225–420. <http://dx.doi.org/10.1099/00207713-30-1-225>.
22. Conn HJ: Taxonomic relationships of certain non-sporeforming rods in soil. *J Bacteriol* 1938, **36**:320–1.
23. Casida LE: *Ensifer adhaerens* gen. nov., sp. nov.: a bacterial predator of *Rhizobium* in soil. *Int J Syst Bacteriol* 1982, **32**:339–45. <http://dx.doi.org/10.1099/00207713-32-3-339>.
24. Young JM: The genus name *Ensifer* Casida 1982 takes priority over *Sinorhizobium* Chen et al. 1988, and *Sinorhizobium morelense* Wang et al. 2002 is a later synonym of *Ensifer adhaerens* Casida 1982. Is the combination *Sinorhizobium adhaerens* (Casida 1982) Willems et al. 2003 legitimate? Request for an Opinion. *Int J Syst Evol Microbiol* 2003, **53**:2107–10. PubMed <http://dx.doi.org/10.1099/ijs.0.02665-0>.
25. Judicial Commission of the International Committee on Systematics of Prokaryotes: The genus name *Sinorhizobium* Chen et al. 1988 is a later synonym of *Ensifer* Casida 1982 and is not conserved over the latter genus name, and the species name '*Sinorhizobium adhaerens*' is not validly published. Opinion 84. *Int J Syst Evol Microbiol* 2008, **58**:1973. PubMed <http://dx.doi.org/10.1099/ijs.0.2008/005991-0>.
26. Biological Agents: Technical rules for biological agents. TRBA; (<http://www.baua.de>):466.
27. Tamura K, Peterson D, Peterson N, Stecher G, Nei M, Kumar S: MEGA5: molecular evolutionary genetics analysis using maximum likelihood, evolutionary distance, and maximum parsimony methods. *Mol Biol Evol* 2011, **28**:2731–9. PubMed <http://dx.doi.org/10.1093/molbev/msr121>.
28. Nei M, Kumar S: *Molecular Evolution and Phylogenetics*. New York: Oxford University Press; 2000.
29. Felsenstein J: Confidence limits on phylogenies: an approach using the bootstrap. *Evolution* 1985, **39**:783–91. <http://dx.doi.org/10.2307/2408678>.
30. Liolios K, Mavromatis K, Tavernarakis N, Kyrpidis NC: The Genomes On Line Database (GOLD) in 2007: status of genomic and metagenomic projects

- and their associated metadata. *Nucleic Acids Res* 2008, **36**:D475-9. PubMed <http://dx.doi.org/10.1093/nar/gkm884>.
31. Ashburner M, Ball CA, Blake JA, Botstein D, Butler H, Cherry JM, Davis AP, Dolinski K, Dwight SS, Eppig JT, *et al*: **Gene ontology: tool for the unification of biology. The Gene Ontology Consortium.** *Nat Genet* 2000, **25**:25-9. PubMed <http://dx.doi.org/10.1038/75556>.
 32. Reeve WG, Tiwari RP, Worsley PS, Dilworth MJ, Glenn AR, Howieson JG: **Constructs for insertional mutagenesis, transcriptional signal localization and gene regulation studies in root nodule and other bacteria.** *Microbiology* 1999, **145**:1307-16. PubMed <http://dx.doi.org/10.1099/13500872-145-6-1307>.
 33. DOE Joint Genome Institute user homepage. <http://my.jgi.doe.gov/general/index.html>.
 34. Bennett S: **Solexa Ltd.** *Pharmacogenomics* 2004, **5**:433-8. PubMed <http://dx.doi.org/10.1517/14622416.5.4.433>.
 35. Zerbino DR: **Using the Velvet *de novo* assembler for short-read sequencing technologies.** *Current Protocols in Bioinformatics* 2010, **Chapter 11**:Unit 11.5.
 36. wgsim. <https://github.com/lh3/wgsim>.
 37. Gnerre S, MacCallum I, Przybylski D, Ribeiro FJ, Burton JN, Walker BJ, Sharpe T, Hall G, Shea TP, Sykes S, *et al*: **High-quality draft assemblies of mammalian genomes from massively parallel sequence data.** *Proc Natl Acad Sci USA* 2011, **108**:1513-8. PubMed <http://dx.doi.org/10.1073/pnas.1017351108>
 38. Hyatt D, Chen GL, Locascio PF, Land ML, Larimer FW, Hauser LJ: **Prodigal: prokaryotic gene recognition and translation initiation site identification.** *BMC Bioinformatics* 2010, **11**:119. PubMed <http://dx.doi.org/10.1186/1471-2105-11-119>.
 39. Mavromatis K, Ivanova NN, Chen IM, Szeto E, Markowitz VM, Kyrpides NC: **The DOE-JGI Standard operating procedure for the annotations of microbial genomes.** *Stand Genomic Sci* 2009, **1**:63-7. PubMed <http://dx.doi.org/10.4056/sigs.632>.
 40. Lowe TM, Eddy SR: **tRNAscan-SE: a program for improved detection of transfer RNA genes in genomic sequence.** *Nucleic Acids Res* 1997, **25**:955-64. PubMed <http://dx.doi.org/10.1093/nar/25.5.0955>.
 41. Pruesse E, Quast C, Knittel K, Fuchs BM, Ludwig W, Peplies J, Glöckner FO: **SILVA: a comprehensive online resource for quality checked and aligned ribosomal RNA sequence data compatible with ARB.** *Nucleic Acids Res* 2007, **35**:7188-96. PubMed <http://dx.doi.org/10.1093/nar/gkm864>.
 42. INFERNAL. <http://infernal.janelia.org>.
 43. Markowitz VM, Mavromatis K, Ivanova NN, Chen IM, Chu K, Kyrpides NC: **IMG ER: a system for microbial genome annotation expert review and curation.** *Bioinformatics* 2009, **25**:2271-8. PubMed <http://dx.doi.org/10.1093/bioinformatics/btp393>.

doi:10.1186/1944-3277-9-4

Cite this article as: Garau *et al.*: Genome sequence of *Ensifer medicae* Di28; an effective N₂-fixing microsymbiont of *Medicago murex* and *M. polymorpha*. *Standards in Genomic Sciences* 2014 **9**:4.

Submit your next manuscript to BioMed Central and take full advantage of:

- Convenient online submission
- Thorough peer review
- No space constraints or color figure charges
- Immediate publication on acceptance
- Inclusion in PubMed, CAS, Scopus and Google Scholar
- Research which is freely available for redistribution

Submit your manuscript at
www.biomedcentral.com/submit

