

UC Davis

UC Davis Previously Published Works

Title

Genome Wide Conditional Mouse Knockout Resources.

Permalink

<https://escholarship.org/uc/item/7t4927g7>

Authors

Kaloff, C

Anastassiadis, K

Ayadi, A

et al.

Publication Date

2016

DOI

10.1016/j.ddmod.2017.08.002

Peer reviewed



HHS Public Access

Author manuscript

Drug Discov Today Dis Models. Author manuscript; available in PMC 2024 August 09.

Published in final edited form as:

Drug Discov Today Dis Models. 2016 ; 20: 3–12. doi:10.1016/j.ddmod.2017.08.002.

Genome Wide Conditional Mouse Knockout Resources

A full list of authors and affiliations appears at the end of the article.

Abstract

The International Knockout Mouse Consortium (IKMC) developed high throughput gene trapping and gene targeting pipelines that produced mostly conditional mutations of more than 18,500 genes in C57BL/6N mouse embryonic stem (ES) cells which have been archived and are freely available to the research community as a frozen resource. From this unprecedented resource more than 6,000 mutant mouse strains have been produced by the IKMC and mostly the International Mouse Phenotyping Consortium (IMPC). In addition, a cre-driver resource was established including 250 inducible cre-driver mouse strains in a C57BL/6 background. Complementing the cre-driver resource, a collection of comprising 27 cre-driver rAAVs has also been produced. The resources can be easily accessed at the IKMC/IMPC web portal (www.mousephenotype.org). The IKMC/IMPC resource is a standardized reference library of mouse models with defined genetic backgrounds that enables the analysis of gene-disease associations in mice of different genetic makeup and should therefore have a major impact on biomedical research.

Introduction

Comparative analyses of mouse and human genomes have provided in depth knowledge on gene and genome organization and, in combination with disease specific genetic alterations discovered by genome wide association studies (GWAS), exome sequencing and entire genome sequence, paved the way for generating mouse models of human disease. As mice and humans share many physiological and pathological features and have similar genome structures mouse models are favorite tools for the functional annotation of the human genome. In most cases disease underlying genetic alterations are missense mutations, splice site mutations or deletions. Corresponding mutations can now be easily copied into the mouse genome to study their molecular and phenotypic consequences. However, functional gene annotation requires a null mutation first to reveal the phenotypic consequences of a complete loss of function in the context of an entire organism. On top of this, as many common diseases occur later in life due to localized tissue specific gene dysfunctions and about one third of null mutations result in embryonic lethality conditional mutations enabling spatially and temporally restricted gene inactivation are essential to fully understand gene function and its impact on human disease. To address

Publisher's Disclaimer: This is a PDF file of an unedited manuscript that has been accepted for publication. As a service to our customers we are providing this early version of the manuscript. The manuscript will undergo copyediting, typesetting, and review of the resulting proof before it is published in its final form. Please note that during the production process errors may be discovered which could affect the content, and all legal disclaimers that apply to the journal pertain.

Conflict of interest:

EMS, and the University of British Columbia have filed for US patent protection on a subset of the MiniPs used in cre-driver strains developed by Pleiades/CanEuCre.

this challenge, a comprehensive international project aimed at inactivating and archiving all 20,000 protein coding genes in ES cells was launched in 2003 [1,2]. Up to now, the International Knockout Mouse Consortium (IKMC, www.knockoutmouse.org) comprising the European Conditional Mouse Mutagenesis Program (EUCOMM), the Knockout Mouse Project (KOMP), the North American Conditional Mouse Mutagenesis Project (NorCOMM) and the Texas A&M Institute for Genomic Medicine (TIGM) [1–4] has created a repository of mutant ES cells, most of them conditionals in a C57BL/6N inbred background for nearly 18,500 genes using a combination of gene trapping and targeting complemented more recently by designer endonucleases [5–12]. The ES cell-based mutations are typically converted into mice by blastocyst injection and phenotypic alterations analyzed in heterozygous or homozygous offspring [13–15]. In parallel, the International Mouse Phenotyping Consortium (IMPC, see www.mousephenotype.org) was established to produce mutant mice from the IKMC ES cell resource and lately by direct nuclease mediated mutagenesis in zygotes for large scale primary phenotyping. Thus far, for the systematic analysis of gene function, the establishment of a large collection of mouse mutants by high-throughput reverse genetics turned out to be the most productive [14–16].

High throughput knockout resources

Because at the time when the IKMC was established it was uncertain whether gene targeting by homologous recombination could be successfully up-scaled, gene targeting and trapping were performed in parallel. The ease of establishing mutant gene trap libraries paved the way for the generation of a large collection of gene trapped ES cell lines carrying mutations in most protein-coding genes expressed in ES cells. Gene trapping introduces random insertional mutations throughout the genome and is performed with either viral or plasmid gene trap vectors [6–10]. Their integration into an intron or exon simultaneously disrupts and reports the expression of a trapped gene [17] and provides a molecular tag enabling easy identification of the disrupted gene by various PCR strategies [18,19]. By employing the Flip-Excision (FLEX) system classic gene trap vectors were converted into conditional vectors enabling the induction of spatially and temporary restricted mutations by crossing the mutant strains to Flpe and/or Cre site-specific recombinase expressing deleter mice [20].

Figure 1 shows the FlipRosabgeo conditional gene trap vector used by the IKMC. It contains a typical gene trap cassette (splice acceptor (SA)-reporter (bgeo) –polyadenylation sequence (polyA) flanked by heterotypic flpe and cre recombinase target sites that enable directional cassette inversions by the corresponding flpe and cre recombinases. Thus, gene trap mutations can be repaired and re-induced by the successive delivery of flpe and cre recombinases [21,22]. Gene trap mutagenesis can be easily scaled-up so that thousands of mutations can be generated rapidly in one experiment. However, gene trap mutagenesis is generally biased towards expressed genes and genes with longer reading frames [23]. While targeted mutagenesis does not have these biases and is definitely more precise, in some cases involving the disruption of multiple isoforms, conditional gene trapping proved superior [21]. Collectively, the IKMC has generated gene trap mutations in more than 11,000 ES cell genes (Table 1, www.genetrap.org, www.informatics.jax.org/allele). As there is some overlap within the IKMC gene trap resource allelic variants can be established. Moreover,

about 4,600 mutations are also available in 129Sv ES cells allowing the comparative analysis of the same mutation in different genetic backgrounds.

Unlike gene trapping, gene targeting by homologous recombination in ES cells is a precise technology enabling the induction any desired mutation ranging from single base-pair substitutions to large deletions [5]. However, in contrast to random gene trapping, gene targeting requires targeting vectors for each individual gene and screening for rare homologous recombinants which is laborious and time consuming. Nonetheless, the IKMC succeeded to develop a high throughput gene targeting strategy by combining serial BAC recombineering for vector generation with high throughput gene targeting in C57BL6/N ES cells [24–29]. Most importantly, IKMC targeting vectors induce reporter tagged conditional ready null mutations which like the conditional gene trap vectors enable spatial and temporal control of gene activity which is essential for distinguishing between pleiotropic gene functions during embryogenesis and adulthood [27,29]. IKMC's most commonly employed targeting vector is the knock-out first conditional ready vector [29,30]. It consists of homology arms embedding a gene trap (SA-bgal-pA) and selectable marker gene (pgk-neo-pA) cassette flanked by *frt* sites and a critical exon flanked by *loxP* sites whose deletion causes a frameshift mutation (tm1a allele; Figure 2). Following homologous recombination, the reporter is spliced into the endogenous transcript resulting in a fusion transcript from which a truncated endogenous protein fused to the reporter is translated (tm1a). Removal of the gene trap and selectable marker cassettes with FLPe converts the knockout-first tm1a allele into a conditional allele (tm1c) (Figure 2). Subsequent deletion of the critical exon from the tm1c allele induces a null mutation by frameshift-mediated nonsense-mediated mRNA decay (tm1d). With these “knockout first conditional ready” targeting vectors the IKMC generated about 13,000 conditional gene mutations in ES cells (Table 2). While most of the conditional targeting vectors successfully mutated the respective genes, a set of about 1,800 genes were not amenable to targeting even after several attempts, possibly due non-permissive chromatin conformation. These genes were pursued further within the framework of EUCOMMTOOLS (a successor project of EUCOMM) by employing CRISPR/Cas9 genome editing technology. We could demonstrate that Cas9-assisted targeting combined with the IKMC conditional targeting vectors resource successfully mutated most genes previously inaccessible to conventional targeting [31]. To accelerate the adoption of Cas9 assisted conditional mutagenesis, we implemented a new search function within the EUMMCR website (www.eummcr.org) enabling direct access to Cas9-amenable vectors and matching sgRNAs (www.eummcr.org/crispr/search). Most of the 13,000 conditional targeting vectors of the IKMC resource have suitably located protospacer (PAM) sequences for Cas9-assisted targeting, suggesting that the conditional mutant resource can now be readily completed [31]. Furthermore, more than 6,000 mutant mouse strains generated from the IKMC ES cell resource by the IKMC and IMPC and their primary phenotypes are available at www.mousephenotype.org [14–16]; see also article in this issue).

Cre driver transgenic mouse strains

To take full advantage of the IKMC conditional *loxP* alleles, a complementary resource of inducible cre recombinase expressing transgenic mouse strains (cre-drivers) is required [32]. Ideally, cre expressing transgenic mouse strains should be at hand for every adult cell type

in order to dissect pleiotropic gene functions related to human disease. To achieve spatial control of cre expression either entire bacterial artificial chromosomes [33], or cre knock-ins into the endogenous loci [34] were used to provide highest fidelity of cre expression.

About 30% of all homozygous null mutations lead to embryonic lethality and therefore temporal control of gene inactivation is required for the analysis of postnatal gene function. Temporal control of cre activity is achieved by employing fusion proteins of cre with modified versions of the ligand binding estrogen receptor domain (cre/ER or cre/ERT2) which also binds the synthetic estrogen receptor antagonist -tamoxifen [35–37]. Without ligand cre/ER or cre/ERT2 are sequestered in the cytoplasm in an inactive state. After ligand binding following exposure to tamoxifen cre/ER translocates to the nucleus and excises floxed sequences from the genome. There are various sophisticated approaches available for generating Cre-driver mice; all of which have advantages and disadvantages. EUCOMMTOOLS exploited a knock-in strategy based on past experience with large-scale vector production and on the existing IKMC vector resource as well as previously characterized cre-knock-ins faithfully mirroring endogenous gene expression.

EUCOMMTOOLS produced 223 inducible cre-driver lines in a C57BL/6N genetic background. The demand for cell type specific cre-drivers was determined in a large scale survey of the scientific community and based on this 639 candidate genes for chosen.

Figure 3 illustrates the knock-in strategy employed by EUCOMMTOOLS which takes advantage of gene cassettes encoding EGFP-Cre/ERT2 separated by a T2A polyprotein cleavage sequence where EGFP provides a convenient reporter for tracking endogenous gene expression. After excluding haploinsufficient genes, a total of 459 Cre knock-in vectors and 374 recombinant C57BL/6 ES cell clones were produced of which 223 were converted into mice. Cre-driver lines were validated by crossing to Rosa26-loxPlacZ, or Rosa26-loxPAil4Tdtomato reporter mice [38,39] and monitoring tamoxifen induced cre activity in progeny tissue samples by histochemistry at 14 (P14) and 56 (P56) days after birth. Cre expression was annotated to various cells and tissues by monitoring EGFP together with lacZ or Tdtomato-reporter gene expression. Presently the following 74 cre-driver strains have been annotated: *Tns1*, *Krt17*, *Acan*, *Mb*, *Tshb*, *Prdm16*, *Cpne*, *Ucp1*, *Gpx3*, *Heatr8*, *Tle6*, *Trpv1*, *Smyd3*, *Hoxa2*, *Tac2*, *Pou2f1*, *Rbpjl*, *Spp2*, *ROSAL2/WT*, *Ptprcap*, *Cd3e*, *Atp6v1g2*, *Ccl25*, *Hes5*, *Myo1a*, *Insl3*, *Csk/Csktm1*, *Dmbx1*, *Mia*, *Spink8*, *Entp5*, *Acsm4*, *Dbx1*, *Cdx2*, *Gnai2*, *Pkd2l1*, *Sfrp1*, *Cnp*, *P2rx7*, *Pdgfrb*, *Gast*, *Cd63*, *Cpne6*, *Nefh*, *Amhr2*, *Rbfox3*, *Wnt9a*, *Barhl1*, *Zfp819*, *cldn7*, *Sgca*, *Pbx2*, *Zbtb32*, *A830010M20F*, *Lztf11*, *Ttl25*, *Sds*, *Aqp3*, *Eomes*, *Spic*, *Zfp629*, *Slc26a5*, *Fga*, *Tbx2*, *Tff1*, *Cmtm5*, *Ttr*, *Myh4*, *aldh3a2*, *Igf*, *Slc26a4*, *Mog*, *Cdh2*, and *Sost*. All brain and body annotations as well as selected images of tissue specific cre expression can be found at www.imib.es/AnotadorWeb/public.jsf. Representative images of whole body and brain cre-activity annotations are shown in Figures 4 and 5, respectively.

All recovered expression patterns have been integrated into an anatomical ontology atlas with cellular resolution I which illustrates the body and brain structures of P14 and P56 mice (www.imib.es/AnotadorWeb/public.jsf). Based on the Allen Brain Atlas (www.brain-map.org) ontology, regional brain annotation was performed at cellular

resolution. For whole body annotation, EUCOMMTOOLS developed its own ontology tree for each organ at cellular resolution. This novel cre-driver resource significantly increases the value of the IKMC resource as it provides mice amenable to tamoxifen-inducible cre expression in a wide range of organs, tissues and cell types. In this context it is of note that the CanEuCre (successor project of Pleiades Promoters program in cooperation with EUCOMMTOOLS and IKMC) produced more than 27 Cre/ERT2-driver strains mostly targeting the brain and 27 recombinant adeno-associated viral iCre constructs for in vitro and in vivo applications (www.jax.org/mouse-search?searchTerm=icre%20Simpson, www.addgene.org/Elizabeth_Simpson [40]). Furthermore, the successor of the NorCOMM project, NorCOMM2LS is performing transposon-based enhancer trapping strategy to identify novel loci suitable for spatially restricted cre-recombinase expression (www.norcomm2.org).

The IKMC cre-driver program and other international large-scale cre-driver initiatives are jointly aiming to assemble a complete cre-driver zoo. Accordingly, the Allen Institute for Brain Science is generating brain-specific cre-driver strains by taking advantage of their comprehensive atlas of brain-specific expression patterns [38]. Moreover, the GENSAT (Gene Expression Nervous System Atlas) program produced and characterized 289 nervous system specific cre-driver strains mainly for the forebrain (www.gensat.org/cre.jsp). However, with few exceptions [33,41] the majority of these cre driver lines express Cre constitutively precluding a temporal control. An additional neural cre-driver resource was established by the Neuroscience Blueprint Cre-Driver Network which produced and validated over 100 cre-driver strains ([42], www.credrivermice.org). The JAX Cre Repository, which currently distributes over 365 cre-driver strains, many of which are maintained as live colonies, implemented a web resource documenting the characteristics of over 100 highly-used cre-driver strains distributed by the JAX Repository (www.jax.org/research-and-faculty/tools/cre-repository). All data generated in this pipeline are routinely updated and disseminated through Mouse Genome Informatics (MGI's) Creportal resource (www.informatics.jax.org/home/recombinase; [43], see below). Finally, cre-driver efforts have also been recently described by Murray et al. [44], and are currently being extended by using CRISPR/Cas9 based approaches (Murray, personal communication).

IKMC/IMPC and cre-driver web portal.

With the expansion of IMPC phenotyping activities the IKMC/IMPC web portals have been merged to create one stop and shop site for genetic and phenotypic data. The public IMPC/IKMC web portal (www.mousephenotype.org) provides updated information on the conditional genetic resources including detailed description of targeting vectors, targeted alleles, ES cell clones, mouse mutants and mutant phenotypes [45,46]. For each product there is a link directing users to the appropriate repository from which the desired product can be ordered (see repository article in this issue). The gene trap alleles are displayed at www.informatics.jax.org/ahele. The EUCOMMTOOLS' Cre driver resource is accessible from the IMPC web portal (www.mousephenotype.org/data/order/creline, www.imib.es/AnotadorWeb/public.jsf) and partly from MGI www.informatics.jax.org/home/recombinase. These portals contain comprehensive information about cre-drivers, including constructs,

promoters, strategies for cre-driver strain establishment and anatomical annotation with images.

IKMC, other repositories and distribution

Large scale international projects have provided mutant alleles for almost every protein-coding gene and made them available to the scientific community via public repositories. The gene trapping and targeting vectors as well as mutant ES cells are freely available via EuMMCR (www.eummcr.org) or KOMP (www.komp.org), and the mutant mice produced from IKMC material by Infrafrontier (www.infrafrontier.eu) CMMR (www.phenogenomics.ca) and KOMP (www.komp.org) for a nominal fee. In addition, the large scale cre-driver projects such as EUCOMMTOOLS, GENSAT, Allen Brain Institute and Blueprint Cre Driver Network deposited all their cre-driver strains in public repositories (www.infrafrontier.eu, www.mmrrc.org, and www.jax.org). Moreover, the International Mouse Strain Resource (IMSR; www.informatics.jax.org/home/recombinase) contains records for more than 2,700 cre-driver strains produced by the scientific community (see repository article in this issue).

Future perspectives

1. The IKMC vector- and ES cell resource is an unprecedented asset for the seamless generation of mutant mice and for the functional annotation of the mammalian genome. It forms the core for large-scale mutant mouse line production, phenotyping and archiving which is being performed by several mouse phenotyping consortia such as IMPC (www.mousephenotype.org), Infrafrontier (www.infrafrontier.eu) and KOMP2 (commonfund.nih.gov/KOMP2). Although the IKMC resource is quite comprehensive it is not yet complete (1,800 protein coding genes are still missing). However, by combining IKMC conditional gene targeting vectors with CRISPR/Cas9 genome editing whole genome coverage is within reach [31]. More than 6,000 mutant mouse strains have been produced from the IKMC resource and are presently being phenotyped by the IMPC [14–16]. It is conceivable that the IKMC/IMPC mutations in combination with nuclease mediated gene editing will lead to the establishment of a functional encyclopedia comprising the entire mammalian genome within the next decade.
2. The IKMC derived mouse models represent standardized references to which future mutant alleles in different genetic backgrounds can be referred to. This is important because analysis of null alleles in a defined inbred mouse strain is a first step in understanding any *in vivo* gene function. Together with streamlined phenotyping - as performed by the IMPC - the IKMC resource will have a major impact on the characterization of complex genetic traits. Moreover, the IKMC library also provides a guide for the generation of mutations by designer endonucleases in the future. Using the IKMC/IMPC resource as reference, the scientific community will be able to determine the contribution of genes and genetic backgrounds to the various disease-associated phenotypes [47,48].

3. To unravel pleiotropic gene functions it is necessary to inactivate genes in cell type-specific and temporally restricted manner. As the majority of IKMC alleles are conditional simple crossing to cre-driver strains will yield the correct answer. Conditionality is a major advantage of the resource because the generation of conditional alleles by CRISPR/Cas technology is still a major challenge.
4. IKMC products contain multipurpose alleles amenable to recombinase-mediated cassette exchange (RMCE) enabling virtually any locus modifications including the insertion of reporter genes for live cell imaging, optogenetic gene cassettes for cell activation or repression, Ca²⁺ -sensors for monitoring neuronal activity, alternative recombinases such as flp, human orthologues of genes of interest and disease-associated missense mutations for allelic series generation [49,50]. The modular approaches employed by the IKMC for vector construction enable re-use of existing targeting vector intermediates for making new alleles as exemplified by the EUCCOMMTOOLS cre knock-ins. Most importantly in future endeavors would be the examination of patient-specific sequence variants in the context of an entire organism. An amazing number of such variations have been already identified. Thus, by inserting disease gene variants into mouse orthologs by RMCE or alternatively, by oligonucleotide-mediated CRISPR/Cas9 mediated insertion into one-cell embryos [51] their characterization could be seamlessly achieved.
5. Finally, IKMC conditional mouse ES cells combined with CRISPR/Cas9 technology could be used to identify genes responsible for ES cell pluripotency and lineage differentiation by generating inducible homozygous mutant ES cell lines.

Authors

C Kaloff¹, K Anastassiadis², A Ayadi³, R Baldock⁴, J Beig¹, M-C Birling³, A Bradley⁵, S Brown⁶, A Bürger¹, W Bushell⁵, F Chiani⁷, FS Collins⁸, B Doe⁵, JT Eppig⁹, RH Finnel¹⁰, C Fletcher¹¹, P Flicek¹², M Fray⁶, RH Friedel¹, A Gambadoro⁷, H Gates⁶, J Hansen¹, Y Herault^{13,14,15,16}, GG Hicks¹⁷, A Hörlein¹, M Hrabé de Angelis¹⁸, V Iyer⁵, PJ de Jong¹⁹, G Koscielny¹², R Kühn¹, P Liu⁵, KC Lloyd²⁰, RG Lopez²¹, S Marschall¹⁸, S Martínez²¹, C McKerlie²², T Meehan¹², H von Melchner²³, M Moore²⁴, SA Murray⁹, A Nagy²⁵, LMJ Nutter²², G Pavlovic³, A Pombero²¹, H Prosser⁵, R Ramirez-Solis⁵, M Ringwald⁹, B Rosen⁵, N Rosenthal⁹, J Rossant²⁶, P Ruiz Noppinger²⁷, E Ryder⁵, WC Skarnes⁵, J Schick¹, F Schnütgen²³, P Schofield²⁸, C Seisenberger¹, M Selloum³, D Smedley^{12,29}, EM Simpson^{30,31,32}, AF Stewart², L Teboul⁶, GP Tocchini Valentini⁷, D Valenzuela³³, A West⁵, W Wurst^{1,34,35,36}

Affiliations

¹Institute of Developmental Genetics, Helmholtz Zentrum Muenchen, D-85764 Neuherberg, Germany

²Biotechnology Center (BIOTEC) of the Technische Universität Dresden, 01307 Dresden, Germany

³CELPEDIA, PHENOMIN, Institut Clinique de la Souris (ICS), CNRS, INSERM, University of Strasbourg, 1 rue Laurent Fries, F-67404 Illkirch-Graffenstaden, France

⁴MRC Human Genetics Unit, Institute of Genetics and Molecular Medicine, University of Edinburgh, College of Medicine and Veterinary Medicine, Edinburgh, Scotland EH4 2XU, UK

⁵The Wellcome Trust Sanger Institute, Wellcome Trust Genome Campus, Hinxton, Cambridge CB101HH, UK

⁶Mammalian Genetics Unit, MRC Harwell, Harwell Science and Innovation Campus, Oxfordshire, OX110RD, UK

⁷Istituto di Biologia Cellulare, Consiglio Nazionale delle Ricerche (CNR), Monterotondo-Scalo, I-00015 Rome, Italy

⁸Office of the Director, National Institutes of Health, Bethesda, Maryland, 20892, USA

⁹The Jackson Laboratory, Bar Harbor, ME 04609, USA

¹⁰The Texas A&M Institute for Genomic Medicine, College Station, Texas, 77843-4485 USA; University of Texas at Austin, Austin, Texas, 78712, USA

¹¹National Institutes of Health, Bethesda, Maryland, 20205, USA

¹²European Bioinformatics Institute (EBI), Hinxton, Cambridge, CB101ST, UK

¹³Institut de Génétique et de Biologie Moléculaire et Cellulaire, Université de Strasbourg, 1 rue Laurent Fries, 67404 Illkirch, France

¹⁴Centre National de la Recherche Scientifique, UMR7104, Illkirch, France

¹⁵Institut National de la Santé et de la Recherche Médicale, U964, Illkirch, France

¹⁶Université de Strasbourg, 1 rue Laurent Fries, 67404 Illkirch, France

¹⁷University of Manitoba, Manitoba Institute of Cell Biology, Winnipeg, MB, R3EOV9, Canada

¹⁸Institute of Experimental Genetics, Helmholtz Zentrum Muenchen, D-85764 Neuherberg, Germany

¹⁹Children's Hospital Oakland Research Institute, CHORI, Oakland, CA, 94609, USA

²⁰Mouse Biology Program, School of Veterinary Medicine, University of California, Davis, California 95616, USA

²¹Instituto de Neurociencias (UMH-CSIC), San Juan de Alicante

²²The Centre for Phenogenomics and Translation Medicine, The Hospital for Sick Children, Toronto, CANADA

²³Department of Molecular Haematology, University of Frankfurt Medical School, 60590 Frankfurt am Main, Germany

²⁴IMPC, San Anselmo, California, US

²⁵Samuel Lunenfeld Research Institute, Mount Sinai Hospital, Joseph and Wolf Lebovic Health Complex, Toronto, ON, M5G1X5, Canada

²⁶Research Institute, The Hospital for Sick Children, SickKids Foundation, Toronto, ON, M5G2L3, Canada

²⁷Department of Vertebrate Genomics, Charité, 10115 Berlin, Germany

²⁸Department of Physiology, Development and Neuroscience, University of Cambridge, Cambridge, CB23EG, UK

²⁹Clinical Pharmacology, Queen Mary, University of London, Gower Street, London WC1E 6BT, UK

³⁰Centre for Molecular Medicine and Therapeutics at the BC Children's Hospital, University of British Columbia, Vancouver, British Columbia, Canada

³¹Department of Medical Genetics, University of British Columbia, Vancouver, British Columbia, Canada

³²Department of Psychiatry, University of British Columbia, Vancouver, British Columbia, Canada

³³Velocigene Division, Regeneron Pharmaceuticals Inc., Tarrytown, New York, 10591, USA

³⁴Deutsches Zentrum für Neurodegenerative Erkrankungen e. V. (DZNE), Standort München - Feodor-Lynen-Str. 17, 81377 München Germany

³⁵Munich Cluster for Systems Neurology (SyNergy), Feodor-Lynen-Str. 17, 81377 Munich, Germany

³⁶Technische Universität München-Weihenstephan, Lehrstuhl für Entwicklungsgenetik, c/o Helmholtz Zentrum München, Ingolstädter Landstr. 1, 85764 Neuherberg, Germany

Acknowledgements:

The authors thank all members of EUCCOMM/EUCCOMMTOOLS and the IKMC for their hard work and constant support in establishing this comprehensive resource. The authors are supported by the EUCCOMMTOOLS project which is funded by the European Commission [FP7-HEALTH-F4-2010-261492] and UM1-HG006370-06 (TFM, JW); NorCommTSL (MRI, Government of Ontario) and Genome Canada (OG-090) (LMJN); CM); the Manitoba Research Innovation Fund (GGH); Genome British Columbia AGCP-CanEuCre-01 award (EMS). National Centre for Scientific Research (CNRS), the French National Institute of Health and Medical Research (INSERM), the University of Strasbourg (UDS), the "Centre Européen de Recherche en Biologie et en Médecine" the French state funds through the "Agence Nationale de la Recherche", Investissements d'Avenir labelled ANR-10-IDEX-0002-02, ANR-10-LABX-0030-INRT, ANR-10-INBS-07 PHENOMINto YH.

References

1. Austin CP et al. (2004) The knockout mouse project. *Nat Genet* 36 (9), 921–924 [PubMed: 15340423]
2. Auwerx J et al. (2004) The European dimension for the mouse genome mutagenesis program. *Nat Genet* 36 (9), 925–927 [PubMed: 15340424]
3. Collins FS et al. (2007) A Mouse for All Reasons. *Cell* 128 (1), 9–13 [PubMed: 17218247]
4. Collins FS et al. (2007) A new partner for the international knockout mouse consortium. *Cell* 129 (2), 235 [PubMed: 17448981]
5. Capecchi MR (1989) The new mouse genetics: altering the genome by gene targeting. *Trends Genet* 5 (3), 70–76 [PubMed: 2660363]
6. Gossler A et al. (1989) Mouse embryonic stem cells and reporter constructs to detect developmentally regulated genes. *Science* 244 (4903), 463–465 [PubMed: 2497519]
7. Friedrich G and Soriano P (1991) Promoter traps in embryonic stem cells: a genetic screen to identify and mutate developmental genes in mice. *Genes Dev* 5 (9), 1513–1523 [PubMed: 1653172]
8. Wurst W et al. (1995) A large-scale gene-trap screen for insertional mutations in developmentally regulated genes in mice. *Genetics* 139 (2), 889–899 [PubMed: 7713439]
9. Wiles MV et al. (2000) Establishment of a gene-trap sequence tag library to generate mutant mice from embryonic stem cells. *Nat Genet* 24 (1), 13–14 [PubMed: 10615117]
10. Skarnes WC et al. (2004) A public gene trap resource for mouse functional genomics. *Nat Genet* 36 (6), 543–544 [PubMed: 15167922]
11. Yang H et al. (2013) One-step generation of mice carrying reporter and conditional alleles by CRISPR/Cas-mediated genome engineering. *Cell* 154 (6), 1370–1379 [PubMed: 23992847]
12. Hsu PD et al. (2014) Development and applications of CRISPR-Cas9 for genome engineering. *Cell* 157 (6), 1262–1278 [PubMed: 24906146]
13. Capecchi MR (2005) Gene targeting in mice: functional analysis of the mammalian genome for the twenty-first century. *Nat Rev Genet* 6 (6), 507–512 [PubMed: 15931173]
14. Hrabe de Angelis M et al. (2015) Analysis of mammalian gene function through broad-based phenotypic screens across a consortium of mouse clinics. *Nat Genet* 47 (9), 969–978 [PubMed: 26214591]
15. Dickinson ME et al. (2016) High-throughput discovery of novel developmental phenotypes. *Nature* 537 (7621), 508–514 [PubMed: 27626380]
16. Meehan TF et al. (2017) Disease model discovery from 3,328 gene knockouts by The International Mouse Phenotyping Consortium. *Nat Genet*
17. Skarnes WC et al. (1992) A gene trap approach in mouse embryonic stem cells: the lacZ reported is activated by splicing, reflects endogenous gene expression, and is mutagenic in mice. *Genes Dev* 6 (6), 903–918 [PubMed: 1592261]
18. Horn C et al. (2007) Splinkerette PCR for more efficient characterization of gene trap events. *Nat Genet* 39 (8), 933–934 [PubMed: 17660805]
19. Townley DJ et al. (1997) Rapid sequence analysis of gene trap integrations to generate a resource of insertional mutations in mice. *Genome Res* 7 (3), 293–298 [PubMed: 9074932]
20. Schnutgen F et al. (2005) Genomewide production of multipurpose alleles for the functional analysis of the mouse genome. *Proc Natl Acad Sci U S A* 102 (20), 7221–7226 [PubMed: 15870191]
21. Nechiporuk T et al. (2016) The REST remodeling complex protects genomic integrity during embryonic neurogenesis. *Elife* 5, e09584 [PubMed: 26745185]
22. Strassman A et al. (2017) Generation of a multipurpose Prdm16 mouse allele by targeted gene trapping. *Dis Model Mech* 10 (7), 909–922 [PubMed: 28424158]
23. Nord AS et al. (2007) Modeling insertional mutagenesis using gene length and expression in murine embryonic stem cells. *PLoS One* 2 (7), e617 [PubMed: 17637833]
24. Zhang Y et al. (1998) A new logic for DNA engineering using recombination in *Escherichia coli*. *Nat Genet* 20 (2), 123–128 [PubMed: 9771703]

25. Angrand PO et al. (1999) Simplified generation of targeting constructs using ET recombination. *Nucleic Acids Res* 27 (17), e16 [PubMed: 10446259]
26. Valenzuela DM et al. (2003) High-throughput engineering of the mouse genome coupled with high-resolution expression analysis. *Nat Biotechnol* 21 (6), 652–659 [PubMed: 12730667]
27. Testa G et al. (2004) A reliable lacZ expression reporter cassette for multipurpose, knockout-first alleles. *Genesis* 38 (3), 151–158 [PubMed: 15048813]
28. Pettitt SJ et al. (2009) Agouti C57BL/6N embryonic stem cells for mouse genetic resources. *Nat Methods* 6 (7), 493–495 [PubMed: 19525957]
29. Skarnes WC et al. (2011) A conditional knockout resource for the genome-wide study of mouse gene function. *Nature* 474 (7351), 337–342 [PubMed: 21677750]
30. Bradley A et al. (2012) The mammalian gene function resource: the International Knockout Mouse Consortium. *Mamm Genome* 23 (9-10), 580–586 [PubMed: 22968824]
31. Schick JA et al. (2016) CRISPR-Cas9 enables conditional mutagenesis of challenging loci. *Sci Rep* 6, 32326 [PubMed: 27580957]
32. Nagy A (2000) Cre recombinase: the universal reagent for genome tailoring. *Genesis* 26 (2), 99–109 [PubMed: 10686599]
33. Gerfen CR et al. (2013) GENSAT BAC cre-recombinase driver lines to study the functional organization of cerebral cortical and basal ganglia circuits. *Neuron* 80 (6), 1368–1383 [PubMed: 24360541]
34. He W et al. (2013) Generation of a tenascin-C-CreER2 knockin mouse line for conditional DNA recombination in renal medullary interstitial cells. *PLoS One* 8 (11), e79839 [PubMed: 24244568]
35. Logie C and Stewart AF (1995) Ligand-regulated site-specific recombination. *Proc Natl Acad Sci U S A* 92 (13), 5940–5944 [PubMed: 7597057]
36. Indra AK et al. (1999) Temporally-controlled site-specific mutagenesis in the basal layer of the epidermis: comparison of the recombinase activity of the tamoxifen-inducible Cre-ER(T) and Cre-ER(T2) recombinases. *Nucleic Acids Res* 27 (22), 4324–4327 [PubMed: 10536138]
37. Feil R et al. (1997) Regulation of Cre recombinase activity by mutated estrogen receptor ligand-binding domains. *Biochem Biophys Res Commun* 237 (3), 752–757 [PubMed: 9299439]
38. Madisen L et al. (2010) A robust and high-throughput Cre reporting and characterization system for the whole mouse brain. *Nat Neurosci* 13 (1), 133–140 [PubMed: 20023653]
39. Soriano P (1999) Generalized lacZ expression with the ROSA26 Cre reporter strain. *Nat Genet* 21 (1), 70–71 [PubMed: 9916792]
40. de Leeuw CN et al. (2014) Targeted CNS delivery using human MiniPromoters and demonstrated compatibility with adeno-associated viral vectors. *Mol Ther Methods Clin Dev* 1, 5-
41. Gong S et al. (2007) Targeting Cre recombinase to specific neuron populations with bacterial artificial chromosome constructs. *J Neurosci* 27 (37), 9817–9823 [PubMed: 17855595]
42. Taniguchi H et al. (2011) A resource of Cre driver lines for genetic targeting of GABAergic neurons in cerebral cortex. *Neuron* 71 (6), 995–1013 [PubMed: 21943598]
43. Heffner CS et al. (2012) Supporting conditional mouse mutagenesis with a comprehensive cre characterization resource. *Nat Commun* 3, 1218 [PubMed: 23169059]
44. Murray SA et al. (2012) Beyond knockouts: cre resources for conditional mutagenesis. *Mamm Genome* 23 (9-10), 587–599 [PubMed: 22926223]
45. Ringwald M et al. (2011) The IKMC web portal: a central point of entry to data and resources from the International Knockout Mouse Consortium. *Nucleic Acids Res* 39 (Database issue), D849–855 [PubMed: 20929875]
46. Koscielny G et al. (2014) The International Mouse Phenotyping Consortium Web Portal, a unified point of access for knockout mice and related phenotyping data. *Nucleic Acids Res* 42 (Database issue), D802–809 [PubMed: 24194600]
47. Wurst W (2016) Animal Models Are Valid to Uncover Disease Mechanisms. *PLoS Genet* 12 (5), e1006013 [PubMed: 27227339]
48. Justice MJ and Dhillon P (2016) Using the mouse to model human disease: increasing validity and reproducibility. *Dis Model Mech* 9 (2), 101–103 [PubMed: 26839397]

49. Osterwalder M et al. (2010) Dual RMCE for efficient re-engineering of mouse mutant alleles. *Nat Methods* 7 (11), 893–895 [PubMed: 20953177]
50. Schebelle L et al. (2010) Efficient conditional and promoter-specific in vivo expression of cDNAs of choice by taking advantage of recombinase-mediated cassette exchange using FIEEx gene traps. *Nucleic Acids Res* 38 (9), e106 [PubMed: 20139417]
51. Inui M et al. (2014) Rapid generation of mouse models with defined point mutations by the CRISPR/Cas9 system. *Sci Rep* 4, 5396 [PubMed: 24953798]

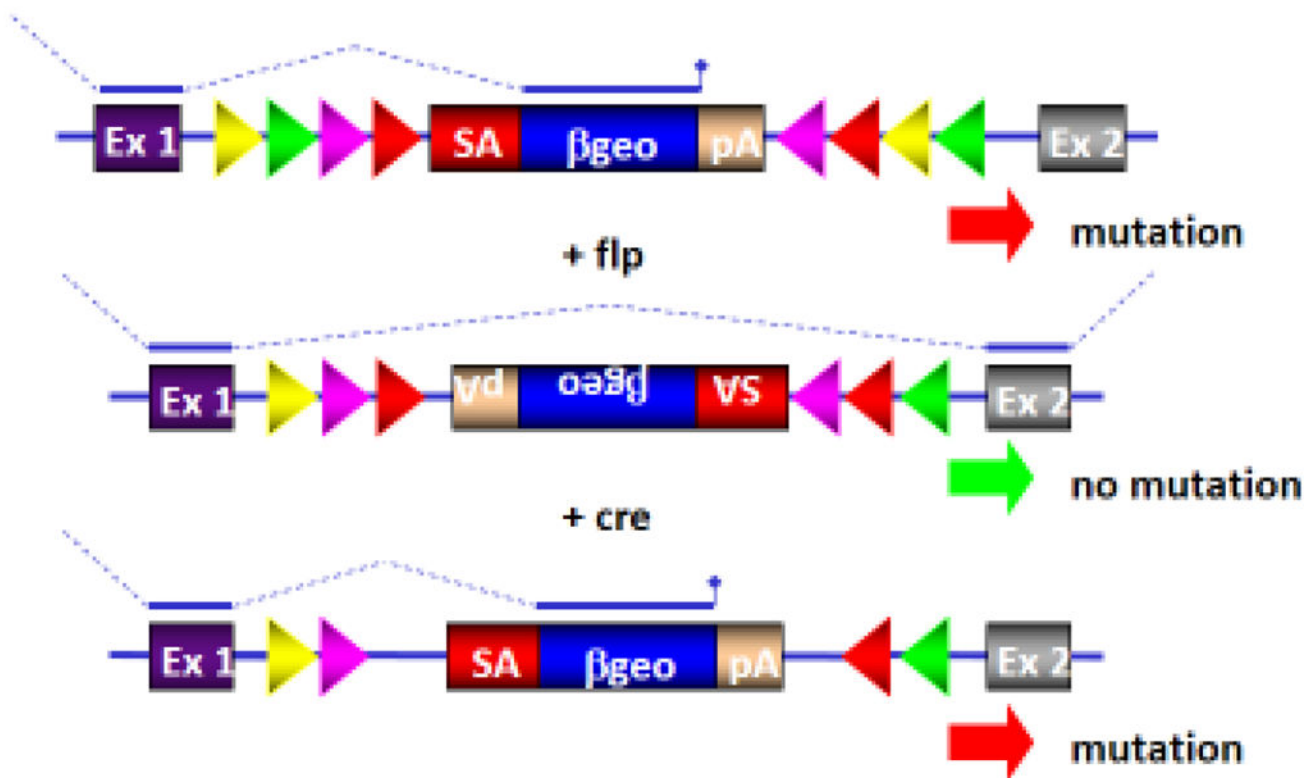


Figure 1:

Conditional gene inactivation by a SAbgeopA cassette. **A.** The SAbgeopA cassette flanked by recombinase target sites (RTs) in a FIEx configuration is illustrated after integration into an intron of an expressed gene. Transcripts (shown as gray arrows) initiated at the endogenous promoter are spliced from the splice donor (SD) of an endogenous exon (here exon 1) to the splice acceptor (SA) of the SAbgeopA cassette and terminate prematurely at the gene trap's polyadenylation (pA) site thereby causing a mutation. Exposure to flpo inverts the SAbgeopA cassette onto the non-coding strand, which reactivates normal splicing. This repairs the mutation by restoring normal gene expression. A second, Cre mediated re-inversion positions the SAbgeopA cassette back onto the coding strand and re-induces the mutation. Arrows indicate primer positions within FlipRosabgeo used to diagnose inversions. Frt (yellow triangles) and F3 (green triangles), heterotypic target sequences for the flpe- and flpo-recombinases; loxP (purple triangles) and lox5171 (red triangles), heterotypic target sequences for the cre-recombinase; SA splice acceptor; bgeo, b-galactosidase-neomycin-phosphotransferase fusion gene; pA, polyadenylation sequence.

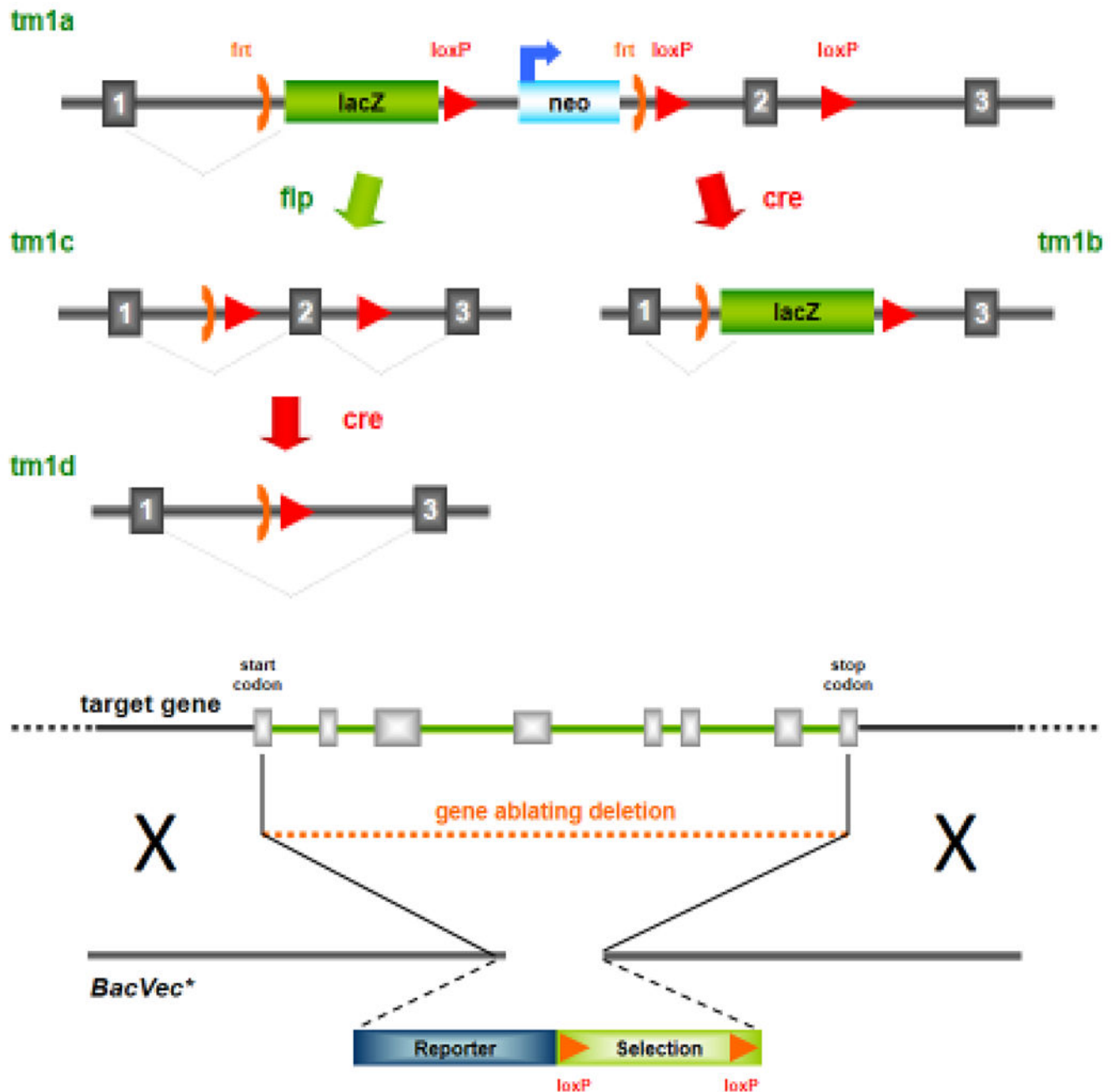


Figure 2:

IKMC gene targeting strategies. **A)** Knock-out first conditional ready targeting strategy. The targeting vector contains a splice-acceptor carrying *lacZ* reporter and neomycin selector cassette flanked by *frt* and *loxP* sites followed by a critical exon flanked by *loxP* site. After integration into the genome this allele is named tm1a allele. Exposure to *flp* recombinase deletes the reporter and selector cassette resulting in a wild type conditional floxed allele (tm1c). The critical exon can be deleted by *cre* recombinase expression (tm1d). Exposure of the tm1a allele first to *cre* recombinase deletes neomycin cassette and the critical exon

leading to a reporter null allele (tm1b). **B**) Represents the generation of entire gene deletions using large BAC targeting vectors integrating a reporter and loxP flanked selector cassette.

Author Manuscript

Author Manuscript

Author Manuscript

Author Manuscript

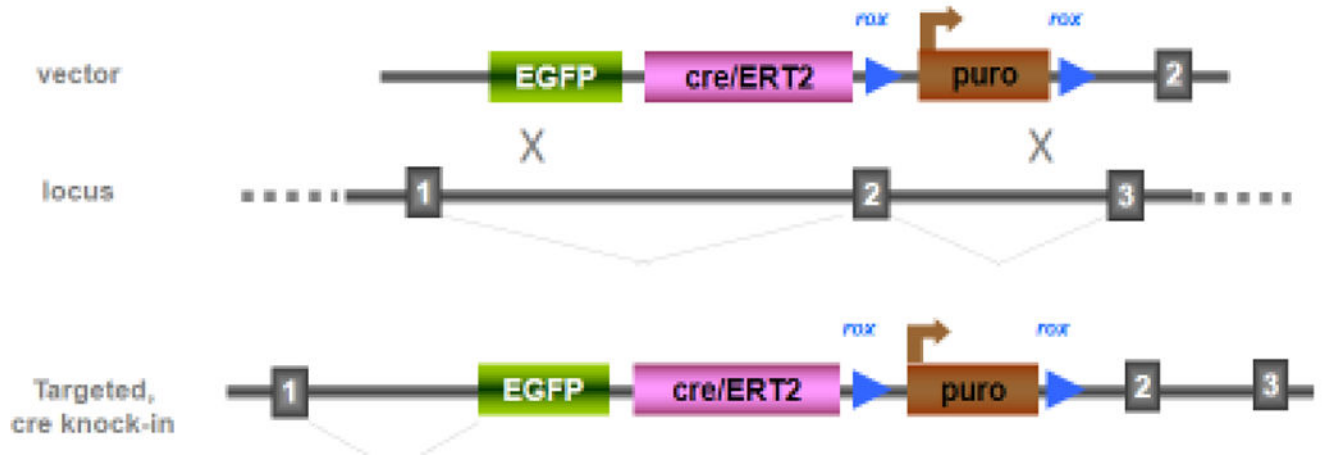


Figure 3: EUCOMMTOOLS cre/ERT2 targeting vectors. The targeting vectors contain green fluorescent protein and cre/ERT2 separated with a T2A peptide sequence. The selection cassette is flanked with rox sites and is removable using dre recombinase.

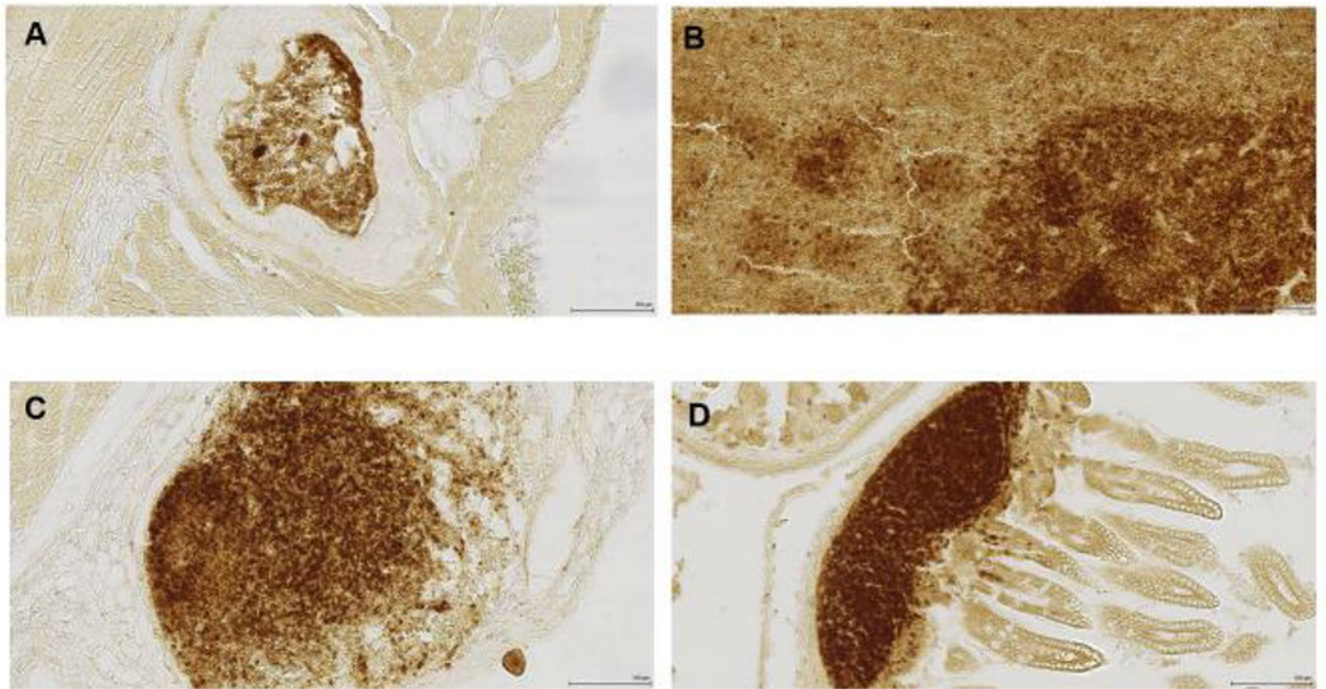


Figure 4:

Cre-activity annotation of PbPrcap promoter driving cre-recombinase strain in the bone marrow (A), thymus (B), lymph node (C) and the peyer's patch of the midgut (D) in P14 mice. The expression was detected in the entire lymphatic system from lymphoblastic precursors in the bone marrow to mature lymphocytes in the lymphatic nodes. Therefore, the inducible cre-driver system will allow gene inactivation at different stages of lymphocyte differentiation.

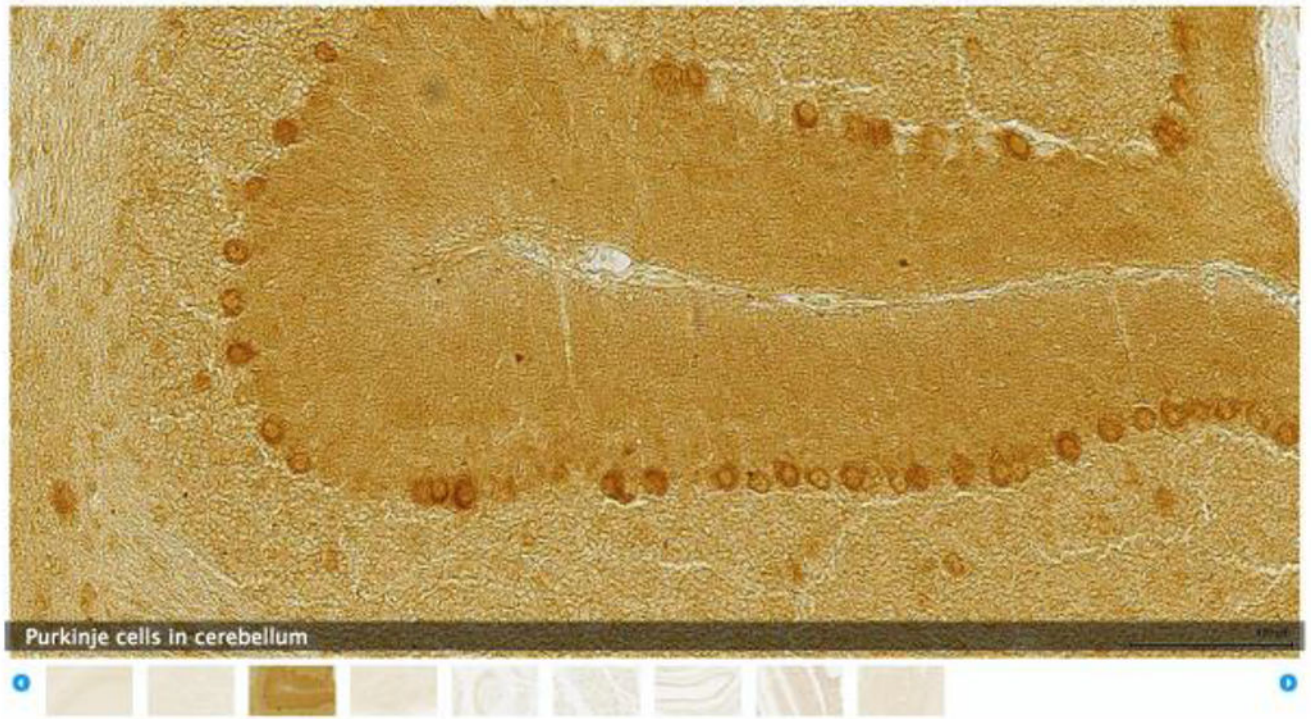


Figure 5:
Cre-activity of the TRpv1 promoter cre-driver strain in Purkinje cells of the cerebellar cortex of P14 mice.

Table 1:

Gene trap mutations generated by the IKMC consortium.

	EUComm/EUComm-TOOLS	KOMP-CSD	KOMP-REGN	NorCOMM	TIGM	total
Gene trap mutations	4.412			3.832	9.882	11.390

Author Manuscript

Author Manuscript

Author Manuscript

Author Manuscript

Table 2:

Targeted mutations in ES cells generated by the IKMC consortium (*Note: the NorCOMM allele represents a null allele convertible into a conditional allele (see NorCOMM web site).

	EUCOMM/EUCOMM-TOOLS	KOMP-CSD	KOMP-REGN	NorCOMM	TIGM	Total
Targeted conditional mutations	8.333	4.252		32		12.406
Targeted deletion mutations	325	1.197	4.134	569		5.829
						14.975

Author Manuscript

Author Manuscript

Author Manuscript

Author Manuscript