

UC Irvine

UC Irvine Previously Published Works

Title

mRNAs encoding neurodevelopmental regulators have equal N6-methyladenosine stoichiometry in Drosophila neuroblasts and neurons

Permalink

<https://escholarship.org/uc/item/7t75716j>

Journal

Neural Development, 17(1)

ISSN

1749-8104

Authors

Sami, Josephine D
Spitale, Robert C
Cleary, Michael D

Publication Date

2022-10-01

DOI

10.1186/s13064-022-00166-4

Peer reviewed

RESEARCH

Open Access



mRNAs encoding neurodevelopmental regulators have equal N⁶-methyladenosine stoichiometry in *Drosophila* neuroblasts and neurons

Josephine D. Sami¹, Robert C. Spitale² and Michael D. Cleary^{1*}

Abstract

N⁶-methyladenosine (m⁶A) is the most prevalent internal mRNA modification in metazoans and is particularly abundant in the central nervous system. The extent to which m⁶A is dynamically regulated and whether m⁶A contributes to cell type-specific mRNA metabolism in the nervous system, however, is largely unknown. To address these knowledge gaps, we mapped m⁶A and measured mRNA decay in neural progenitors (neuroblasts) and neurons of the *Drosophila melanogaster* larval brain. We identified 867 m⁶A targets; 233 of these are novel and preferentially encode regulators of neuroblast proliferation, cell fate-specification and synaptogenesis. Comparison of the neuroblast and neuron m⁶A transcriptomes revealed that m⁶A stoichiometry is largely uniform; we did not find evidence of neuroblast-specific or neuron-specific m⁶A modification. While m⁶A stoichiometry is constant, m⁶A targets are significantly less stable in neuroblasts than in neurons, potentially due to m⁶A-independent stabilization in neurons. We used in vivo quantitative imaging of m⁶A target proteins in *Mettl3* methyltransferase null brains and *Ythdf* m⁶A reader overexpressing brains to assay metabolic effects of m⁶A. Target protein levels decreased in *Mettl3* null brains and increased in *Ythdf* overexpressing brains, supporting a previously proposed model in which m⁶A enhances translation of target mRNAs. We conclude that m⁶A does not directly regulate mRNA stability during *Drosophila* neurogenesis but is rather deposited on neurodevelopmental transcripts that have intrinsic low stability in order to augment protein output.

Background

N⁶-methyladenosine or “m⁶A” is the most common nucleotide modification within eukaryotic mRNAs. This epitranscriptome mark is recognized by reader proteins that affect multiple mRNA metabolic processes, including splicing, decay and translation [1]. m⁶A is highly enriched in the nervous system of multiple organisms, including mammals, and has been implicated in events

ranging from neural stem cell differentiation [2] to synaptic plasticity [3]. While multiple lines of evidence support the importance of m⁶A in neural development, a comprehensive understanding of neurodevelopmental processes affected by m⁶A is still lacking. In particular, whether or not m⁶A targets and the metabolic effects of m⁶A vary by neural cell type or neurodevelopmental stage is largely unknown. This information is important for determining the degree to which m⁶A influences the diversity of cellular fates and functions in the nervous system.

In mammals, cytoplasmic m⁶A is primarily found in the 3'UTR or at stop codons and is recognized by three

*Correspondence: mcleary4@ucmerced.edu

¹ Department of Molecular and Cell Biology, Quantitative and Systems Biology Graduate Program, University of California, Merced, CA, USA
Full list of author information is available at the end of the article



© The Author(s) 2022. **Open Access** This article is licensed under a Creative Commons Attribution 4.0 International License, which permits use, sharing, adaptation, distribution and reproduction in any medium or format, as long as you give appropriate credit to the original author(s) and the source, provide a link to the Creative Commons licence, and indicate if changes were made. The images or other third party material in this article are included in the article's Creative Commons licence, unless indicated otherwise in a credit line to the material. If material is not included in the article's Creative Commons licence and your intended use is not permitted by statutory regulation or exceeds the permitted use, you will need to obtain permission directly from the copyright holder. To view a copy of this licence, visit <http://creativecommons.org/licenses/by/4.0/>. The Creative Commons Public Domain Dedication waiver (<http://creativecommons.org/publicdomain/zero/1.0/>) applies to the data made available in this article, unless otherwise stated in a credit line to the data.

readers: YTHDF1, YTHDF2, and YTHDF3. Early work assigned distinct roles to each reader (YTHDF1 and 3 promote translation, YTHDF2 promotes mRNA degradation) and suggested that each “DF” protein bound distinct mRNAs [4]. However, recent studies strongly suggest that all DF proteins target the same set of mRNAs and act redundantly via a single mechanism to induce mRNA decay [5]. There may be exceptions to this rule; for example, rare 5'UTR m6A promotes translation by directly recruiting the initiation factor eIF3 [6]. Dynamic regulation of m6A target metabolism could conceivably occur via variation in m6A stoichiometry (the fraction of transcripts that contain the modification), but quantitative analyses of m6A across cell types supports a model in which m6A targeting and frequency is uniform regardless of cell type or physiology [4].

Here we investigate m6A dynamics within the developing central nervous system of *Drosophila melanogaster*. *Drosophila* provides multiple advantages for m6A research: m6A is present at high levels in the embryonic, larval and adult nervous system; deletion of the *Mettl3* methyltransferase gene is not lethal, thus allowing molecular and phenotypic analyses in m6A-null animals; and the *Drosophila* genome encodes a single cytoplasmic reader, Ythdf, simplifying experiments aimed at manipulating the m6A system. The m6A methyltranscriptome has previously been mapped in *Drosophila* cell lines [7], embryos [8], and adult heads [9]. Multiple genetic approaches have demonstrated that m6A is involved in *Drosophila* sex determination [10], locomotion [11], learning and memory [9], and axon growth [7]. As in mammals, several molecular mechanisms have been assigned to m6A in *Drosophila*. In the nucleus, m6A regulates splicing [10] and m6A at the 5' end of nascent transcripts relieves RNA polymerase II pausing to promote transcription [12]. In mature cytoplasmic transcripts, m6A is almost exclusively found in the 5' UTR (in contrast to the 3' UTR and stop codon localization found in mammals). *Drosophila* 5' UTR m6A is thought to affect translation in one of two ways. First, m6A *decreases* translation of a subset of targets that are bound, in a Ythdf-dependent manner, by the translation repressor Fmr1 [7]. Second, 5' UTR m6A has been shown to *increase* translation based on reporter assays and the observation that *Mettl3* loss-of-function causes a widespread decrease in nascent protein production [9]. 5' UTR m6A is enriched among transcripts with low translation efficiency and Kan et al. proposed a model in which an m6A-dependent mechanism counteracts inefficient translation to augment target protein production [9].

While previous work in *Drosophila* identified m6A targets and molecular mechanisms, several knowledge

gaps remain, especially with respect to neural development. First, it is unclear to what degree prior m6A mapping efforts identified targets relevant to neural progenitors; previous mapping in embryos included all cell types (of which neural progenitors are a tiny fraction) and adult heads lack neural progenitors. Second, while prior work ruled out a correlation between m6A and mRNA decay [9], this was based on aligning adult head m6A targets with embryonic central nervous system half-life data; m6A targets and mRNA half-lives were not compared in equivalent neural cell populations. Finally, experiments aimed at measuring the effects of m6A on target protein output in the nervous system, *in vivo*, are lacking and could help identify mechanisms relevant to specific neural cell types.

This work addresses the above knowledge gaps by obtaining methyltranscriptome maps that are representative of the neural progenitor and neuron populations in the *Drosophila* larval brain. The larval brain contains a well-defined population of neural stem cells, called neuroblasts, that undergo multiple rounds of asymmetric self-renewing divisions to ultimately produce neurons and glia. Using genetic manipulation and RNA profiling techniques, we obtained neurodevelopmental m6A maps that allowed comparisons of m6A stoichiometry between neuroblasts and neurons as well as investigation of how m6A influences mRNA stability in neuroblasts and neurons. We found extensive m6A targeting of neurodevelopmental regulators, including m6A modification of progenitor-specific transcripts. However, among transcripts expressed in both neuroblasts and neurons, we did not find any evidence of differential m6A stoichiometry. We confirmed the previously described correlation between m6A and translation efficiency and found a neuroblast-specific correlation between m6A and mRNA decay. Finally, we used *in vivo* imaging to demonstrate that m6A enhances target protein output in neuroblasts and neurons. Our findings support a model in which m6A is uniformly deposited on neurodevelopmental transcripts with intrinsic low stability and low translation efficiency and serves to augment protein production from those target mRNAs.

Methods

Drosophila genetics

The following lines were obtained from the Bloomington *Drosophila* Stock Center: Oregon-R-P2 (wildtype) (stock # 2376), *insc-Gal4* (stock # 8751), *nSyb-Gal4* (stock #51635), and *UAS-CD:UPRT* (stock # 77120). *UAS-aPKC^{CAAX}* was a gift from C.Y. Lee. *UAS-Ythdf* and *Mettl3* null flies were gifts from E. Lai.

meRIP

m6A-RNA immunoprecipitation was performed as previously described [13]. Biological replicate experiments were performed for all three genotypes (wildtype, *insc>aPKC^{CAAX}*, and *Mettl3* null). Purified m6A-RNA was used to make sequencing libraries using the NuGen Ovation Universal RNA-Seq protocol, including adapter ligation and ribosomal RNA depletion using a *Drosophila*-specific AnyDeplete rRNA primer mixture. Libraries were amplified and purified according to the NuGen protocol and quality was assessed using an Agilent Bioanalyzer DNA high-sensitivity chip.

EC-tagging pulse-chase

5-ethynylcytosine was synthesized as previously described [14]. Biological triplicate samples were prepared by carrying out 5EC feeding and RNA processing independently. Larvae were reared at 25 °C and fed 1 mM 5EC from 72 – 84 h after hatching prior to RNA extraction (pulse samples) or transferred to media with 10 mM uridine for 3, 6, or 12 h prior to RNA extraction (chase samples). Crudely dissected central nervous system RNA was extracted using Trizol. For each genotype and timepoint, duplicate 20 mg RNA samples were biotinylated using Click-iT Nascent RNA Capture reagents (ThermoFisher), purified on Dynabeads MyOne Streptavidin T1 magnetic beads (ThermoFisher) and used for “on bead” RNA-seq library synthesis, as previously described [15].

RNA-sequencing and bioinformatics

Sequencing was performed on a HiSeq 2500. Sequence data were pre-processed with *FastQC*. Reads were trimmed using Trimmomatic to discard any reads with adaptor contamination and low-quality bases. We used *STAR* to map reads to the Ensembl gene annotation for *Drosophila melanogaster* (BDGP6). Peaks were identified by running MACS2 [16] with default parameters. For input RNA-seq and pulse-chase RNA-seq, reads were mapped using *kallisto* [17]. meRIP-seq data were quantified and mapped using *featureCounts* and those data were used in differential expression analysis with *limma-voom* [18]. *Limma-voom* was used to identify genes with significantly higher meRIP-seq counts in wildtype brains compared to *Mettl3* null brains. All candidates that lacked significant counts above *Mettl3* null were visually inspected in IGV to determine if the gene should be considered a m6A target. *PeakAnnotator* was used to annotate m6A position, as previously described [19]. Gene ontology analysis was performed using GO TermFinder [20] with the full *Drosophila*

melanogaster gene set as background and default settings.

RT-qPCR

First strand cDNA was made using the SuperScript VILO cDNA Synthesis Kit (Invitrogen). Real-time PCR quantitation was performed on a Rotor-Gene Q (Qiagen) in 20 mL reactions using SYBR green detection. Custom PCR oligonucleotides (Integrated DNA Technologies) were used for all targets: *run* forward (TAGGACAAA GGACCCCAATC), *run* reverse (TCGTCGCACGAT TTTATGAG), *Sp1* forward (TTGAAGCTATCTTGC GGTG), *Sp1* reverse (ATAGAGCGGGCGTTTCTT TC), *5S rRNA* forward (GCCAACGACCATAACCAG CT), *5S rRNA* reverse (AGGCCAACAAACACGCGGT ATTCCCA). Triplicate RT-qPCR experiments (starting at the m6A immunoprecipitation step) were performed for all target transcripts.

Imaging and quantification of target proteins

The following antibodies were used: guinea pig anti-Runt (gift of C. Desplan) at 1:400, rabbit anti-CycD (Santa Cruz Biotech, sc-25765) at 1:250, and rabbit anti-Ase (gift of Y.N. Jan) at 1:1,000. Alexa-fluor conjugated secondary antibodies (ThermoFisher) were used. Brain imaging was performed using a Zeiss LSM 880 confocal microscope. Immunostaining was performed in parallel for all targets and genotypes with confocal settings kept constant. Pixel intensity measurements were made using ImageJ and the “measure” tool applied to an identical size area of interphase nuclei of neuroblasts, individual neurons, and multiple brain regions lacking expression of the protein of interest to calculate background signal.

Results

Transcripts encoding neurodevelopmental regulators are m6A modified in neuroblasts and neurons

Near the end of *Drosophila* larval neurogenesis, the combined brain lobes contain approximately 10,000 neurons, roughly 500 glia, and only 200 neuroblasts [21, 22]. To increase representation of the neuroblast methyltranscriptome, we used a genetic modification that causes neuroblasts to undergo symmetric self-renewing divisions, thus generating larval brains with abundant ectopic neuroblasts and relatively few neurons [21]. In these experiments, we used *insc-Gal4* to drive expression of *UAS-aPKC^{CAAX}* in neuroblasts and harvested larval brains at 96–102 h after larval hatching (ALH) as a source of “neuroblast-biased RNA”. In contrast, we used wildtype larval brains at 96–102 h ALH as a source of “neuron-biased RNA” since neurons are vastly more abundant than any other cell type at this stage. In addition to collecting RNA samples that cover the neuron

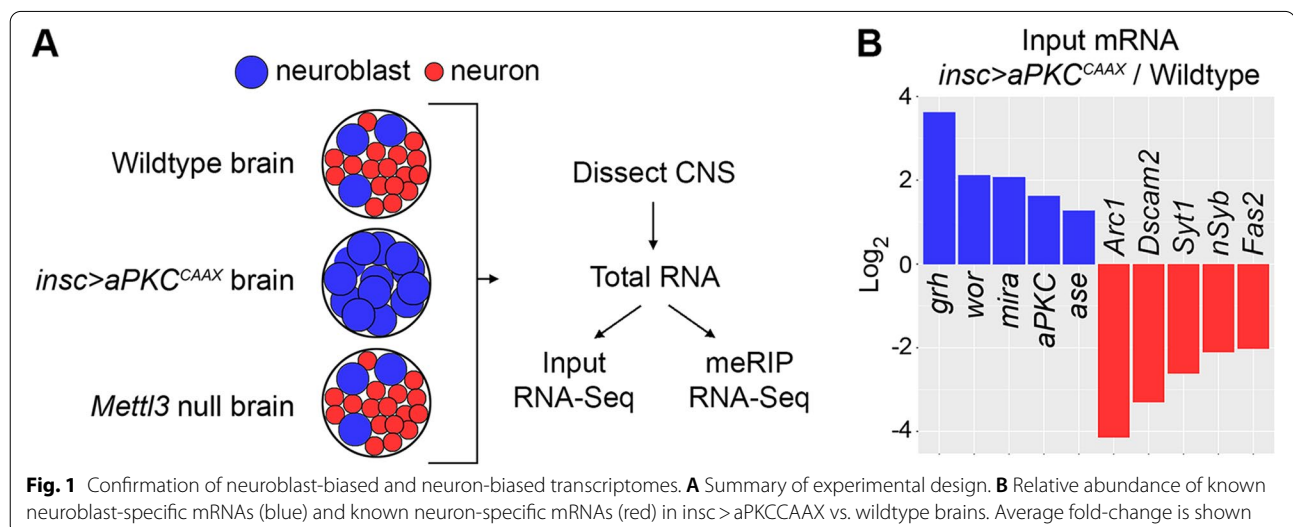
and neuroblast methyltranscriptomes, we collected RNA from stage-matched brains of *Mettl3* null larvae to obtain negative control “m6A null RNA”. Brain RNA from each genotype was split in two; half was used for quantification of total mRNA abundance (input RNA-seq) and half was used for methyltranscriptome purification using anti-m6A immunoprecipitation (meRIP-seq) [13]. This experimental design is summarized in Fig. 1A. As a first step, we used input RNA to test for differential abundance of known neuroblast or neuron-specific mRNAs in the neuron-biased and neuroblast-biased samples. We confirmed that *insc-Gal4 > UAS-aPKC^{CAAX}* samples are enriched in neuroblast-specific transcripts and depleted of neuron-specific transcripts (Fig. 1B).

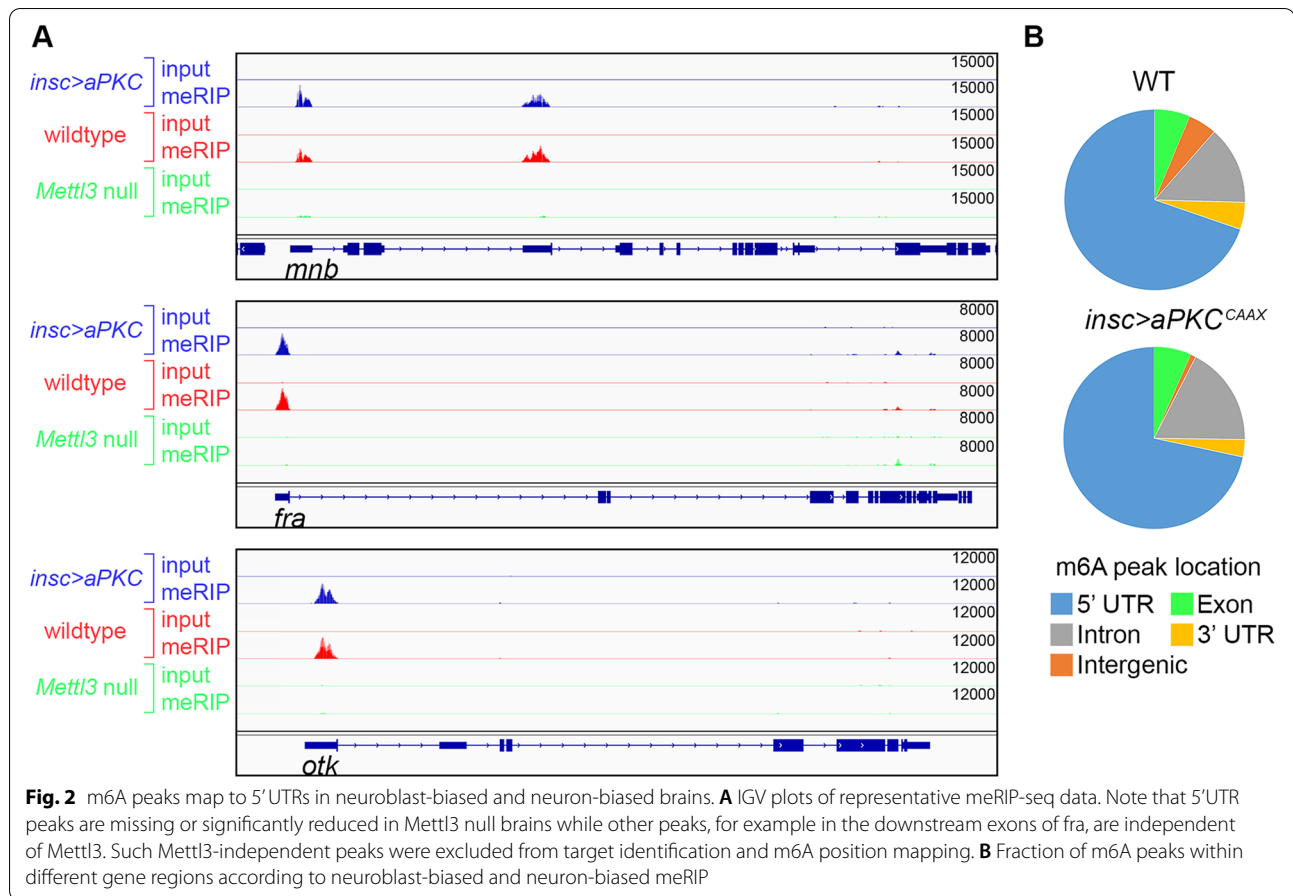
Subsequent meRIP-seq analysis of neuroblast-biased, neuron-biased and m6A-null RNA samples identified 867 m6A targets in the larval brain (Fig. 2A and Supplemental Table 1). 634 of these targets (73%) were also identified in adult *Drosophila* heads by Kan et al., revealing a high degree of m6A conservation across life cycle stages. As previously described, the m6A-null meRIP-seq data were useful for identifying “background” signal. This allowed high-confidence target identification and more accurate mapping of m6A peaks along a transcript: only peaks that were significantly enriched compared to m6A-null meRIP were included. Using this approach, we found that the vast majority of m6A peaks in the neuroblast-biased and neuron-biased transcriptomes map to the 5' UTR (Fig. 2B). We used sequences from the combined neuron-biased and neuroblast-biased datasets to search for motifs associated with m6A and found significant enrichment of an AAACV motif. This motif contains the invariant AAAC core identified in other *Drosophila* m6A mapping studies [7, 9].

To gain insight into the potential roles of m6A in larval brain development, we used gene ontology analysis to identify functional categories overrepresented among m6A targets. This revealed significant enrichment of transcripts encoding regulators of essential neurodevelopmental processes, such as “synapse organization”, “dendrite development”, “neuroblast proliferation” and “neuron fate specification” in addition to processes known to be broadly important for development, such as “cell death”, “cytoskeleton organization”, and “Wnt signaling pathway” (Table 1). As expected, the combined profiling of neuroblast-biased and neuron-biased brains allowed identification of a large number of m6A targets (233 genes) that were not identified by previous m6A mapping in adult heads [9]. This novel set of m6A targets.

includes many genes known to regulate neuroblast proliferation, asymmetric cell division, neuron fate specification and axon pathfinding (Fig. 3A).

Comparing neuron-biased and neuroblast-biased meRIP-seq data revealed several genes with higher m6A peaks in one genotype or the other, potentially indicating cell type-specific differences in m6A stoichiometry (Fig. 3B). To test this possibility, we normalized meRIP-seq ratios (neuron-biased / neuroblast-biased) to input ratios (neuron-biased / neuroblast-biased). This identified cases where differential m6A peaks could be explained by differences in total transcript abundance. Following normalization for input reads and filtering for genes with statistically significant differences, we did not identify any evidence of differential m6A stoichiometry (Fig. 3C). 135 genes had approximately equal input expression levels (fold-change ≤ 1.5 and no statistically significant difference between neuroblast-biased and neuron-biased input





mRNA abundance), but none of these “uniformly” expressed transcripts showed evidence of elevated m6A frequency in neuroblast-biased or neuron-biased brains. This suggests that elevated m6A peaks in neuroblast-biased brains, as shown for *Sp1* and *run* in Fig. 3B, are due to elevated expression of the corresponding transcripts in neuroblasts. The converse is true for elevated m6A counts in neuron-biased brains. We further tested this conclusion using m6A immunoprecipitation and RT-qPCR of *Sp1* and *run* (Fig. 3D). 5S rRNA served as a negative control in these experiments as it was not identified as a m6A target in our experiments and is known to lack methyladenosine in metazoans [23]. meRIP and RT-qPCR confirmed *Sp1* and *run* as m6A targets and ruled out differential m6A between neuroblast-biased and neuron-biased brains. Overall, our m6A mapping indicates that m6A is selectively targeted to neurodevelopmental genes in neuroblasts and neurons and that for transcripts present in both cell types, the degree of m6A modification is largely constant.

m6A correlates with low translation efficiency and low mRNA stability

Given that m6A has been implicated in a range of mRNA metabolic processes, we next sought clues to the molecular function of m6A during larval brain development. Akhtar et al. identified a role for m6A and the nuclear m6A reader in enhancing transcription by relieving RNAP II pausing at target genes. This was demonstrated in *Drosophila* S2 cells and the phenomena has not been described in vivo or in a developmental context. To test this possible function, we used RNA-seq measurements of total mRNA abundance from wildtype brains and *Mettl3* null brains. We reasoned that if m6A significantly enhances transcription in larval brains, the absence of m6A would result in decreased target abundance due to increased RNAP II pausing. As previously shown for adult *Drosophila* heads [9], this analysis failed to identify a strong directional relationship between m6A and transcript abundance (Fig. 4A). We also tested for a relationship between m6A and translation efficiency (TE). Using the adult head ribosome profiling data analyzed by Kan et al. [9], we found a similar significant enrichment of m6A in mRNAs with low translation efficiency (Fig. 4B).

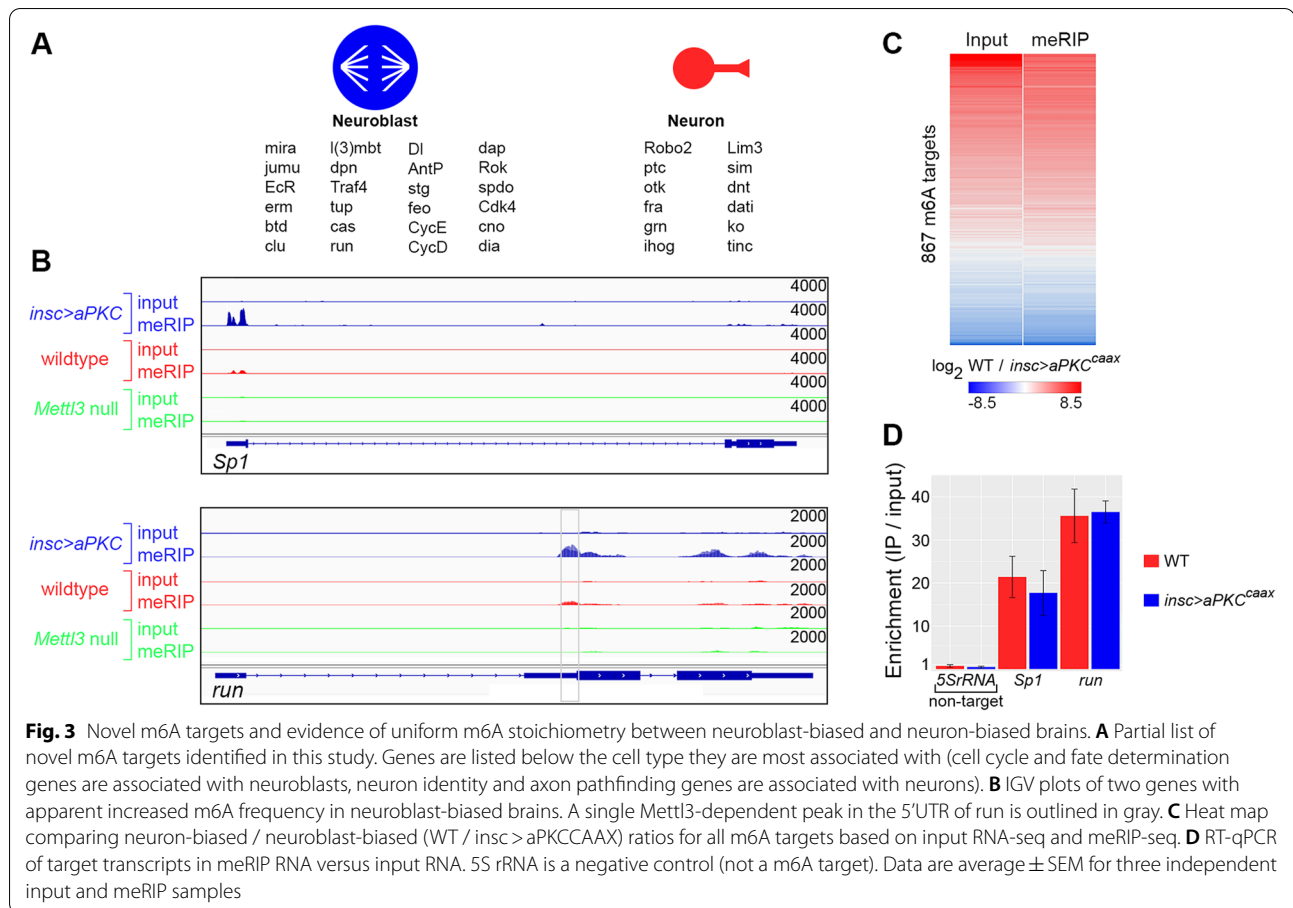
Table 1 Top 20 GO categories enriched among m6A targets, ranked by *p*-value. Count is the number of m6A targets in that category. Enrichment is the observed frequency of targets in that category (count / 867 total m6A targets) divided by the expected frequency (all genes in that category / total *Drosophila* genes)

GO Term	Definition	<i>P</i> value	Count	Enrichment
GO:0022008	neurogenesis	2.0×10^{-112}	233	5.5
GO:0007154	cell communication	1.2×10^{-92}	291	3.6
GO:0048812	neuron projection morphogenesis	1.0×10^{-60}	125	6.1
GO:0006355	regulation of transcription	1.2×10^{-46}	171	3.5
GO:0007611	learning or memory	3.1×10^{-16}	41	5.5
GO:0,050,808	synapse organization	4.1×10^{-15}	54	4.0
GO:0016358	dendrite development	4.9×10^{-14}	41	4.9
GO:0008219	cell death	6.0×10^{-13}	59	3.3
GO:0007010	cytoskeleton organization	6.5×10^{-13}	79	2.7
GO:0042063	gliogenesis	9.8×10^{-13}	28	6.7
GO:0008039	synaptic target recognition	1.4×10^{-11}	20	9.3
GO:0008356	asymmetric cell division	2.7×10^{-11}	28	6.0
GO:0007405	neuroblast proliferation	8.0×10^{-11}	26	6.2
GO:0016055	Wnt signaling pathway	1.6×10^{-10}	30	5.2
GO:0050795	regulation of behavior	1.5×10^{-09}	26	5.5
GO:0007268	chemical synaptic transmission	1.1×10^{-08}	45	3.2
GO:0030509	BMP signaling pathway	1.3×10^{-07}	18	6.9
GO:0048665	neuron fate specification	2.6×10^{-07}	13	10.1
GO:0000165	MAPK cascade	3.6×10^{-06}	26	4.0
GO:0055057	neuroblast division	6.4×10^{-05}	13	6.9

Next, we tested for any relationship between m6A and mRNA stability. We obtained mRNA half-life measurements for neural progenitors and neurons using EC-tagging pulse-chase [14]. Briefly, this approach uses targeted expression of a cytosine deaminase-uracil.

phosphoribosyltransferase (CD:UPRT) fusion enzyme to convert 5-ethynylcytosine (EC) into 5-ethynyluridine (EU)-monophosphate in specific cell types. EU is incorporated into nascent mRNAs of target cells and the tagged RNAs can be purified after “pulse” feeding 5EC and at subsequent “chase” timepoints in which excess uridine is provided to ensure no new tagged transcripts are made. We used *insc-Gal4* to express *UAS-CD:UPRT* in neural progenitors and *nSyb-Gal4* to express *UAS-CD:UPRT* in neurons. Globally, neural progenitor and neuron transcriptomes had similar half-life distributions (Fig. 4C and Supplemental Table 2), indicating that transcriptome-wide mRNA decay kinetics do not significantly differ between neural progenitors and neurons. However, differences were revealed when we analyzed the half-lives of m6A targets: there was no relationship between m6A and mRNA stability in neurons (Fig. 4D), while m6A targets were significantly less stable in neuroblasts (Fig. 4E).

To further investigate the different relationships between m6A and stability in neuroblasts and neurons, we directly compared the half-lives of m6A targets in each cell type and found that 185 m6A targets are at least 1.5-fold more stable in neurons (Fig. 5A). If one assumes m6A directly affects mRNA stability, this differential decay is surprising given that our data suggest m6A is constant between neuroblasts and neurons. Differential stability could be caused by varied Ythdf expression, however; prior transcriptome profiling of purified neuroblasts and neurons found that Ythdf mRNA is present at equally high levels in progenitors and neurons [24]. Alternatively, these data agree with a model in which the difference between neuroblasts and neurons is due to m6A-independent stabilization of target mRNAs in neurons. GO analysis of the neuron-stabilized m6A targets revealed enrichment of transcripts involved in neuron-specific functions such as “synapse assembly”, “dendrite development” and “axon guidance” (Fig. 5B), supporting the model that these transcripts are likely selectively stabilized to support the needs of mature neurons. We conclude that neuron-specific stabilization of m6A targets explains the lack of correlation between m6A and half-life in neurons.

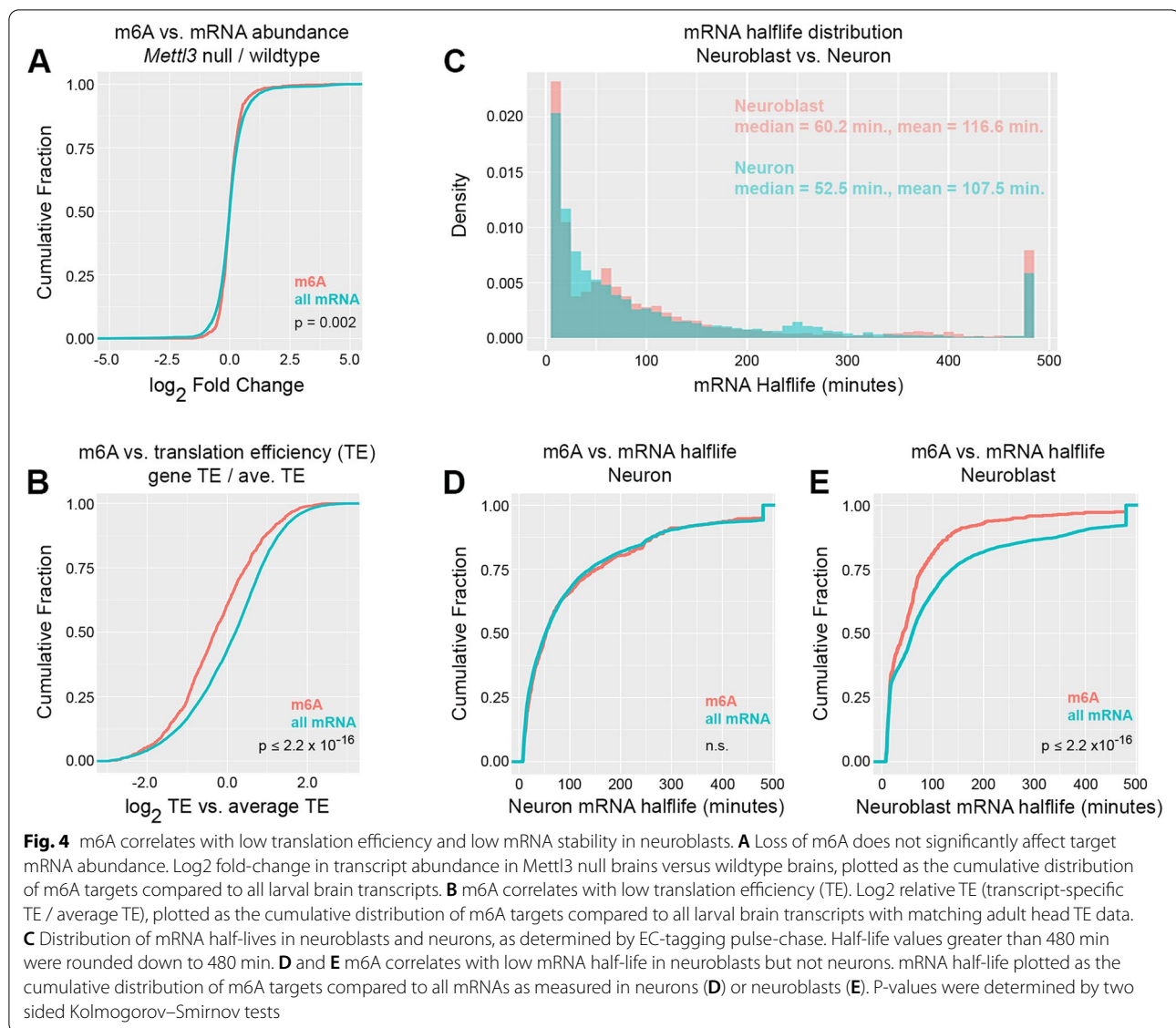


m6A and *Ythdf* enhance target protein expression in larval brains

The analyses described above reveal correlations between m6A, mRNA translation and mRNA decay, but these findings do not reveal underlying mechanisms or causal relationships. With respect to translation, two mechanisms have been described in *Drosophila*: translation inhibition that requires *Fmr1* [7] and *Ythdf*-dependent translation enhancement [9]. Comparing our m6A targets with previously identified m6A-dependent *Fmr1* targets in the larval central nervous system revealed an overlap of only 5.8% (50 genes). Since the majority of our targets are not predicted to be regulated by *Fmr1*, we conclude that the translation enhancing effect may be more relevant. With respect to mRNA stability, 3' UTR m6A in mammalian transcripts induces decay via DF proteins recruiting the CCR4-NOT deadenylase complex [5] but a decay pathway triggered by 5'UTR m6A has not been described in any species. Instead, we predict that the relationship between m6A and mRNA is indicative of a compensatory mechanism, similar to that described for translation efficiency. In this case, we predict that 5'UTR m6A enhances translation of low stability

transcripts whose decay is regulated by m6A-independent mechanisms.

According to the translation enhancement model, *Mettl3* deletion should decrease target protein production and *Ythdf* overexpression should increase target protein production. To test this model in the developing larval brain, we performed quantitative immunofluorescent imaging of proteins encoded by m6A targets in wildtype brains, *Mettl3* null brains and *Ythdf* overexpressing brains (overexpressing *Ythdf* in neural progenitors using *insc-Gal4 > UAS-Ythdf*). We measured immunofluorescent signal for two m6A targets, the transcription factor Runt (Run) and the cell cycle regulator Cyclin D (*CycD*), in addition to one non-target, the transcription factor Asense (*Ase*). Translation efficiency data are not available for *run* and *ase*, likely because these genes are not expressed or are only expressed at low levels in adult brains, but the TE value for *CycD* in adult heads is 1.17 compared to an average value of 1.37 [25]. In contrast to the TE data, mRNA stability data are available for each of these genes. In neural progenitors *run* decays very rapidly (half-life of 5.1 min) and is more stable in neurons (half-life of 17.6 min). In larval brains,



CycD and *ase* expression is primarily restricted to neural progenitors and we therefore only obtained progenitor-specific decay measurements for these transcripts: *CycD* has a half-life of 136.3 min and *ase* has a half-life of 16.1 min.

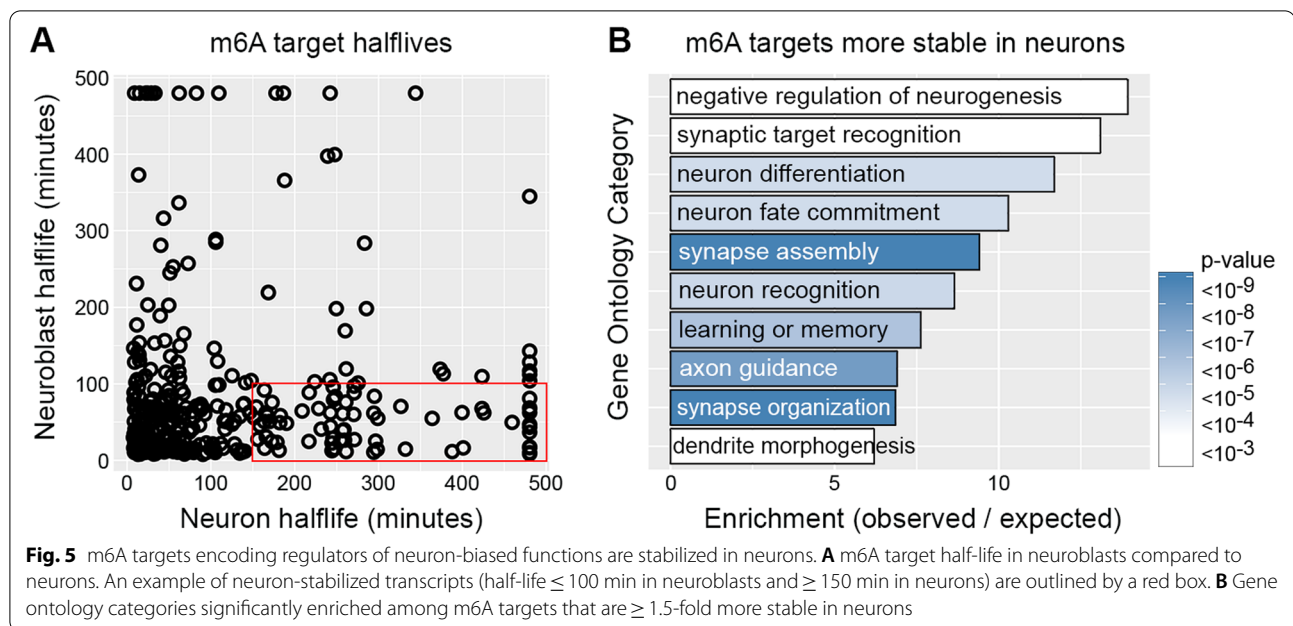
Runt expression in neuroblasts changed in a manner corresponding to the translation enhancement model: Runt signal decreased in *Mettl3* null neuroblasts and increased in *Ythdf* overexpressing neuroblasts (Fig. 6A). In neurons, Runt signal was unaffected by loss of *Mettl3* but increased in *Ythdf* overexpressing brains. Similar to Runt, *CycD* protein levels decreased in *Mettl3* null neuroblasts, but *Ythdf* overexpression did not alter *CycD* abundance (Fig. 6B). Finally, as expected, neither *Mettl3* loss-of-function or *Ythdf* overexpression altered.

the abundance of the non-target *Asense* (Fig. 6C). The *run* and *CycD* data support our prediction that m6A does not induce mRNA decay; if this were the case, *Mettl3* deletion would.

most likely increase protein levels (we observe the opposite effect) and *Ythdf* overexpression would decrease protein levels (again, we see the opposite). Instead, these results support the model that 5'UTR m6A enhances translation of target mRNAs in the developing nervous system.

Discussion

Precise deployment of genetic information during neurogenesis requires multiple layers of post-transcriptional control. m6A provides one such layer, but the full



diversity of cell types and pathways affected by m6A, and the degree to which m6A modification and target metabolism are dynamically regulated, is not fully understood. We investigated these questions of m6A dynamics in the context of *Drosophila* larval brain development. The m6A profiles we obtained from neuroblast-biased and neuron-biased brains expand the list of known m6A targets in the *Drosophila* nervous system, contributing to a deeper understanding of m6A targeting during neurodevelopment. Importantly, our results lend support to the model that m6A stoichiometry of individual transcripts is largely uniform and does not vary according to cell type. In spite of this uniformity, we show that m6A targets may be metabolized in a cell type-specific manner, particularly if target mRNA processing pathways vary by cell type. Finally, we provide neural-specific *in vivo* evidence to support the translation enhancement model proposed by Kan et al. [9]. Altogether our results point to m6A as an important modifier of protein output from key neurodevelopmental transcripts.

While *insc > aPKC^{CAAX}* brains are not exclusively composed of neuroblasts and wildtype brains are not exclusively composed of neurons, the transcriptomes of each are heavily biased toward one cell type or the other and have a high likelihood of revealing differential m6A stoichiometry. However, no significant differential m6A targeting was indicated by our analyses. This outcome agrees with the theory that differential m6A stoichiometry is rare [4]. Part of this theory is based on the mechanics of m6A deposition and removal; the enzymes that write and erase m6A appear to be ubiquitous and it is unclear how

their activity might be conditionally modified to alter only a subset of targets. In the context of *Drosophila* neural differentiation, dynamic m6A targeting would require selective alteration of methyltransferase activity between neuroblasts and neurons in a way that targeted specific genes, or transcript-specific demethylase activity in one cell type versus the other. While such mechanisms may exist and could involve differences in RNAP II pausing at target genes, we interpret our results as supporting the “non-dynamic m6A” model, at least along the neural differentiation axis in *Drosophila*.

In addition to identifying novel m6A targets, we also obtained transcriptome-wide mRNA decay measurements in neural progenitors and neurons. A link between m6A and mRNA decay in *Drosophila* was previously ruled out by comparing adult head m6A targets and embryonic central nervous system mRNA half-lives. A limitation of this prior analysis is that the embryo mRNA decay data were mainly derived from neurons; neural progenitor-specific measurements were missing. Our cell type-specific mRNA half-life data revealed a correlation between m6A and short half-life in neuroblasts but no correlation between m6A and half-life in neurons. It is important to recognize that our m6A – mRNA decay results demonstrate a correlation (or lack thereof) and not causation. Given that m6A stoichiometry is constant between neuroblasts and neurons, that the Ythdf reader is expressed at equal levels in both cell types [24], and that a molecular pathway linking 5' UTR m6A to mRNA decay is not known, we interpret these results as evidence of m6A-independent stabilization of target

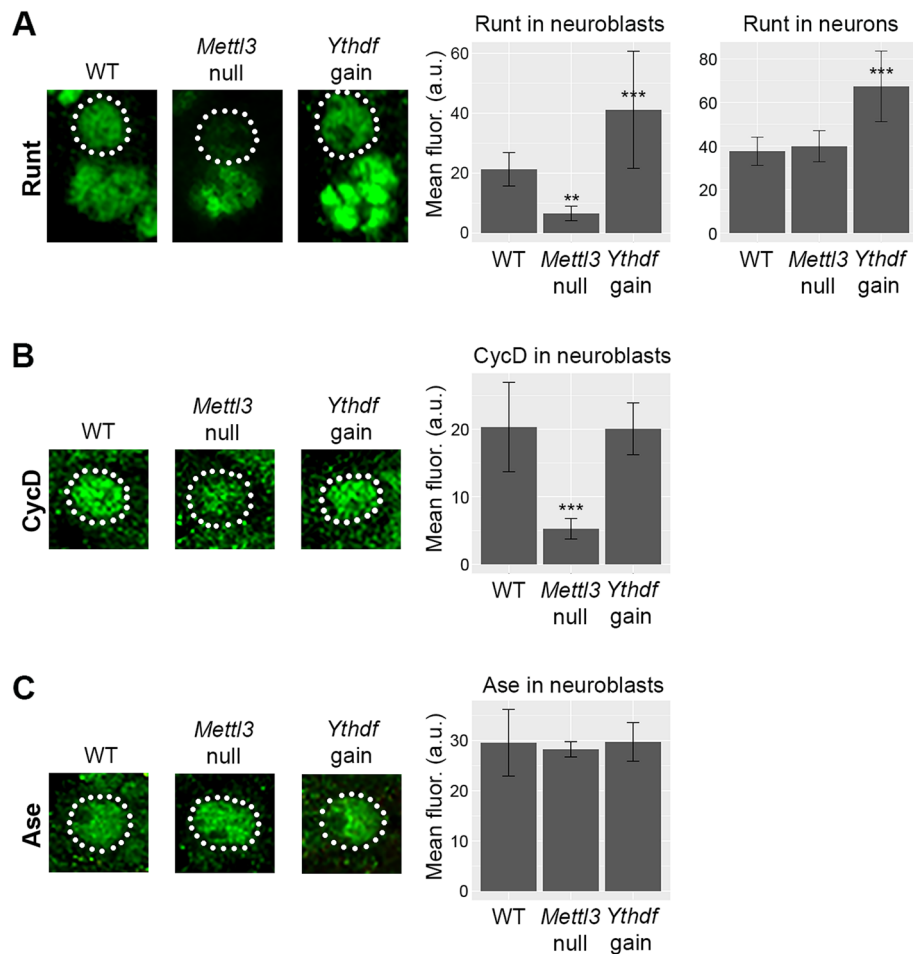


Fig. 6 m6A and Ythdf increase target protein abundance in neuroblasts and neurons. **A** Representative images of Runt in neuroblasts (outlined by white dotted line) and neurons (cells clustered below neuroblast) in wildtype, *Mettl3* null and *Ythdf* overexpressing brains. The fluorescent signal intensity (mean and standard deviation) for Runt in each genotype and cell type is shown at right. **B** Representative images of CycD in neuroblasts (outlined by white dotted line) in wildtype, *Mettl3* null and *Ythdf* overexpressing brains. CycD was not detected in neurons. The fluorescent signal intensity (mean and standard deviation) for CycD in each genotype is shown at right. **C** Representative images of Ase in neuroblasts (outlined by white dotted line) in wildtype, *Mettl3* null and *Ythdf* overexpressing brains. Ase was not detected in neurons. The fluorescent signal intensity (mean and standard deviation) for Ase in each genotype is shown at right. All fluorescent intensity measurements are derived from analysis of ≥ 20 cells from ≥ 6 different brain lobes. Statistical significance was determined by one way ANOVA followed by Tukey post-test. P -values: ** = 1×10^{-4} , *** $\leq 1 \times 10^{-7}$

transcripts in neurons. Neuron-specific stabilization of m6A targets may occur via canonical mRNA decay pathways. For example, loss of a destabilizing RNA-binding protein during differentiation could increase target mRNA stability in neurons relative to neuroblasts. In this scenario, increased stability would synergize with the translation enhancing effect of m6A to optimize expression of proteins necessary for post-mitotic functions like synapse assembly. Such a mechanism aligns with the concept that m6A is a modifier of protein output from target transcripts but not the main driver of target mRNA metabolism.

A major question in developmental biology is how varying rates of transcription, decay and translation combine to determine gene expression dynamics. Short mRNA half-life and inefficient translation favor low protein output, but the m6A pathway may have evolved to fine-tune protein levels of targets with these properties. For example, rapid decay of *run* in neuroblasts is expected to result in very low protein levels. m6A-dependent enhancement of *run* translation could increase the output of each transcript prior to degradation and may help achieve expression levels appropriate for Runt activity in neuroblasts. Our quantitative

imaging of Runt in neuroblasts supports this model: Runt levels decrease in *Mettl3* null brains and increase in *Ythdf* overexpressing brains. *Runt* mRNA half-life increases threefold in neurons and there is a corresponding increase in Runt signal in neurons compared to neuroblasts. Loss of *Mettl3* in neurons does not result in a quantifiable decrease in Runt levels, perhaps because neuron-specific stabilization of *run* mRNA compensates for the loss of m6A. Surprisingly, *Ythdf* overexpression in neural progenitors significantly increased Runt signal in neurons. This may be due to elevated Runt production in progenitors and excess Runt being actively or passively inherited by neurons. Alternatively, *Ythdf* itself may be inherited by neurons where it is sufficient to increase Runt production. While *Mettl3* loss-of-function decreased *CycD* signal in neuroblasts, *Ythdf* overexpression had no effect. This may indicate a role for m6A position in affecting translation: the largest *Mettl3*-dependent peak in *run* is concentrated near the start codon, while *CycD* has two *Mettl3*-dependent peaks distributed more broadly over the 5' UTR (data not shown). Whether m6A position along a transcript determines the degree to which *Ythdf* enhances translation remains to be determined.

Our finding that m6A is targeted to neurodevelopmental regulatory genes in neuroblasts and neurons raises the question of how target specificity is achieved. A recently described targeting mechanism in *Drosophila* provides an intriguing answer that could also explain the relationships between m6A, mRNA half-life and translation efficiency. In *Drosophila*, the m6A methyltransferase complex is selectively recruited to promoters where RNA polymerase II is bound in a paused, non-elongating state [12]. It is well established that genes involved in developmental transitions and dynamic cellular processes have high levels of paused RNAP II in *Drosophila* [12, 26, 27]. Additionally, we and others have shown that transcripts involved in developmental transitions and dynamic cellular processes tend to have short half-lives [28, 29], and in many instances those transcripts become more stable in neurons [30]. Finally, transcripts encoding developmental regulators are also known to contain sequence features like uORFs [25] or secondary structures [31] that influence translation efficiency. The fact that genes encoding developmental regulators are transcriptionally-regulated by paused RNAP II (the signal for m6A methylation) and are post-transcriptionally regulated via dynamic mRNA decay and translation provides a parsimonious explanation for the m6A – mRNA decay – TE relationships we identified.

Conclusions

This work expands our understanding of the role of m6A in neural development by providing a detailed view of m6A targeting and target metabolism in neural progenitors and neurons. The use of neuroblast-biased brains allowed identification of m6A targets missed by prior profiling efforts and allowed comparison of m6A stoichiometry between neuroblast-biased and neuron-biased transcriptomes. We found that there is little variation in m6A stoichiometry between these transcriptomes. Our neuroblast and neuron mRNA half-life data revealed a strong correlation between m6A and low mRNA stability in neuroblasts but not neurons. We conclude that the lack of correlation in neurons is due to m6A-independent stabilization of those targets, in accordance with evidence that 5'UTR m6A in *Drosophila* affects translation and not stability. Finally, we provide neural-specific *in vivo* evidence to support the translation enhancement model. Overall, our findings contribute to the view that m6A is important for fine-tuning gene expression during neural development and that dynamic changes in m6A stoichiometry are rare.

Abbreviations

m6A: N6-methyladenosine; 3'UTR: 3-Prime untranslated region; 5'UTR: 5-Prime untranslated region; ALH: After larval hatching; meRIP: Anti-m6A RNA immunoprecipitation; RNA-seq: RNA sequencing; meRIP-seq: RNA sequencing of anti-m6A immunoprecipitated RNA; RT-qPCR: Reverse transcription of RNA followed by quantitative polymerase chain reaction; rRNA: Ribosomal RNA; mRNA: Messenger RNA; WT: Wildtype; RNAPII: RNA polymerase II; TE: Translation efficiency; EC: 5-Ethynylcytosine; GO: Gene ontology; uORF: Upstream Open Reading Frame.

Supplementary Information

The online version contains supplementary material available at <https://doi.org/10.1186/s13064-022-00166-4>.

Additional file 1: Supplemental Table 1. Neuroblast and neuron m6A targets.

Additional file 2: Supplemental Table 2. Neuroblast and neuron mRNA half-lives.

Acknowledgements

We thank Eric Lai, Cheng-Yu Lee, Claude Desplan, and Yuh Nung Jan for reagent gifts. Mohamed Aboukilila (UCM), Jingtian Wang (UCI) and Whitney England (UCI) provided technical assistance and advice. We thank members of the UC Irvine Genomic High Throughput Facility for technical assistance. Stocks obtained from the Bloomington *Drosophila* Stock Center (NIH P40OD018537) were also used in this study. Imaging data were collected with a confocal microscope acquired through the National Science Foundation MRI Award Number DMR-1625733.

Authors' contributions

MDC and RCS conceptualized the main aims of the project. JDS, MDC and RCS designed experiments. JDS performed all experiments and analyzed results, with assistance from MDC and RCS. JDS and MDC wrote the manuscript, with feedback from RCS. All authors approved the final manuscript.

Funding

This work was supported by a grant from the National Institutes of Health to MDC and RCS (R21MH116415).

Availability of data and materials

RNA-seq data underlying the results presented in this study are available from the NCBI Gene Expression Omnibus (series records GSE214058 and GSE214062).

Declarations**Ethics approval and consent to participate**

Not applicable.

Consent for publication

Not applicable.

Conflict of interest

The authors declare no conflict of interest.

Author details

¹Department of Molecular and Cell Biology, Quantitative and Systems Biology Graduate Program, University of California, Merced, CA, USA. ²Department of Pharmaceutical Sciences and Department of Chemistry, University of California, Irvine, CA, USA.

Received: 7 September 2022 Accepted: 26 September 2022

Published online: 15 October 2022

References

- He PC, He C. m6A RNA methylation: from mechanisms to therapeutic potential. *EMBO J*. 2021;40(3):e105977. <https://doi.org/10.15252/embj.2020105977>.
- Wang Y, Li Y, Yue M, Wang J, Kumar S, Wechsler-Reya RJ, Zhang Z, Ogawa Y, Kellis M, Duester G, Zhao JC. N6-methyladenosine RNA modification regulates embryonic neural stem cell self-renewal through histone modifications. *Nat Neurosci*. 2018;21(2):195–206. <https://doi.org/10.1038/s41593-017-0057-1>.
- Merkurjev D, Hong WT, Iida K, Omoto I, Goldie BJ, Yamaguti H, Ohara T, Kawaguchi SY, Hirano T, Martin KC, Pellegrini M, Wang DO. Synaptic N6-methyladenosine (m6A) epitranscriptome reveals functional partitioning of localized transcripts. *Nat Neurosci*. 2018;21(7):1004–14. <https://doi.org/10.1038/s41593-018-0173-6>.
- Murakami S, Jaffrey SR. Hidden codes in mRNA: Control of gene expression by m6A. *Mol Cell*. 2022;82(12):2236–51. <https://doi.org/10.1016/j.molcel.2022.05.029>.
- Zaccara S, Jaffrey SR. A Unified Model for the Function of YTHDF Proteins in Regulating m6A-Modified mRNA. *Cell*. 2020;181(7):1582–1595.e18. <https://doi.org/10.1016/j.cell.2020.05.012>.
- Meyer KD, Patil DP, Zhou J, Zinoviev A, Skabkin MA, Elemento O, Pestova TV, Qian SB, Jaffrey SR. 5' UTR m(6)A Promotes Cap-Independent Translation. *Cell*. 2015;163(4):999–1010. <https://doi.org/10.1016/j.cell.2015.10.012>.
- Worpenberg L, Paolantoni C, Longhi S, Mulorz MM, Lence T, Wessels HH, Dassi E, Aiello G, Sutandy FXR, Scheibe M, Edupuganti RR, Busch A, Möckel MM, Vermeulen M, Butter F, König J, Notarangelo M, Ohler U, Dietrich C, Quattrone A, Soldano A, Roignant JY. Ythdf is a N6-methyladenosine reader that modulates Fmr1 target mRNA selection and restricts axonal growth in Drosophila. *EMBO J*. 2021;40(4):e104975. <https://doi.org/10.15252/embj.2020104975>.
- Kan L, Grozhik AV, Vedanayagam J, Patil DP, Pang N, Lim KS, Huang YC, Joseph B, Lin CJ, Despic V, Guo J, Yan D, Kondo S, Deng WM, Dedon PC, Jaffrey SR, Lai EC. The m6A pathway facilitates sex determination in Drosophila. *Nat Commun*. 2017;4(8):15737. <https://doi.org/10.1038/ncomms15737>.
- Kan L, Ott S, Joseph B, et al. A neural m6A/Ythdf pathway is required for learning and memory in Drosophila. *Nat Commun*. 2021;12:1458. <https://doi.org/10.1038/s41467-021-21537-1>.
- Hausmann IU, Bodi Z, Sanchez-Moran E, Mongan NP, Archer N, Fray RG, Soller M. m6A potentiates Sxl alternative pre-mRNA splicing for robust Drosophila sex determination. *Nature*. 2016;540(7632):301–4. <https://doi.org/10.1038/nature20577>.
- Lence T, Akhtar J, Bayer M, Schmid K, Spindler L, Ho CH, Kreim N, Andrade-Navarro MA, Poeck B, Helm M, Roignant JY. m⁶A modulates neuronal functions and sex determination in Drosophila. *Nature*. 2016;540(7632):242–7. <https://doi.org/10.1038/nature20568>.
- Akhtar J, Renaud Y, Albrecht S, Ghavi-Helm Y, Roignant JY, Silies M, Junion G. m6A RNA methylation regulates promoter-proximal pausing of RNA polymerase II. *Mol Cell*. 2021;81(16):3356–3367.e6. <https://doi.org/10.1016/j.molcel.2021.06.023>.
- Meyer KD, Saletore Y, Zumbo P, Elemento O, Mason CE, Jaffrey SR. Comprehensive analysis of mRNA methylation reveals enrichment in 3' UTRs and near stop codons. *Cell*. 2012;149(7):1635–46. <https://doi.org/10.1016/j.cell.2012.05.003>.
- Hida N, Aboukabila MY, Burow DA, Paul R, Greenberg MM, Fazio M, Beasley S, Spitale RC, Cleary MD. EC-tagging allows cell type-specific RNA analysis. *Nucleic Acids Res*. 2017;45(15):e138. <https://doi.org/10.1093/nar/gkx551>.
- Aboukabila MY, Sami JD, Wang J, England W, Spitale RC, Cleary MD. Identification of novel regulators of dendrite arborization using cell type-specific RNA metabolic labeling. *PLoS ONE*. 2020;15(12):e0240386. <https://doi.org/10.1371/journal.pone.0240386>.
- Zhang Y, Liu T, Meyer CA, Eeckhoute J, Johnson DS, Bernstein BE, Nusbaum C, Myers RM, Brown M, Li W, Liu XS. Model-based analysis of ChIP-Seq (MACS). *Genome Biol*. 2008;9(9):R137. <https://doi.org/10.1186/gb-2008-9-9-r137>.
- Bray NL, Pimentel H, Melsted P, Pachter L. Near-optimal probabilistic RNA-seq quantification. *Nat Biotechnol*. 2016;34(5):525–7. <https://doi.org/10.1038/nbt.3519>.
- Law CW, Chen Y, Shi W, Smyth GK. voom: Precision weights unlock linear model analysis tools for RNA-seq read counts. *Genome Biol*. 2014;15(2):R29.
- Dominissini D, Moshitch-Moshkovitz S, Salmon-Divon M, Amariglio N, Rechavi G. Transcriptome-wide mapping of N(6)-methyladenosine by m(6)A-seq based on immunocapturing and massively parallel sequencing. *Nat Protoc*. 2013;8(1):176–89. <https://doi.org/10.1038/nprot.2012.148>.
- Boyle EI, Weng S, Gollub J, Jin H, Botstein D, Cherry JM, Sherlock G. GO:TermFinder—open source software for accessing Gene Ontology information and finding significantly enriched Gene Ontology terms associated with a list of genes. *Bioinformatics*. 2004;20(18):3710–5. <https://doi.org/10.1093/bioinformatics/bth456>.
- Carney TD, Miller MR, Robinson KJ, Bayraktar OA, Osterhout JA, Doe CQ. Functional genomics identifies neural stem cell sub-type expression profiles and genes regulating neuroblast homeostasis. *Dev Biol*. 2012;361(1):137–46. <https://doi.org/10.1016/j.ydbio.2011.10.020>.
- Pereanu W, Shy D, Hartenstein V. Morphogenesis and proliferation of the larval brain glia in Drosophila. *Dev Biol*. 2005;283(1):191–203. <https://doi.org/10.1016/j.ydbio.2005.04.024>.
- Dannfald A, Favory JJ, Deragon JM. Variations in transfer and ribosomal RNA epitranscriptomic status can adapt eukaryote translation to changing physiological and environmental conditions. *RNA Biol*. 2021;18(sup1):4–18. <https://doi.org/10.1080/15476286.2021.1931756>.
- Yang CP, Fu CC, Sugino K, Liu Z, Ren Q, Liu LY, Yao X, Lee LP, Lee T. Transcriptomes of lineage-specific Drosophila neuroblasts profiled by genetic targeting and robotic sorting. *Development*. 2016;143(3):411–21. <https://doi.org/10.1242/dev.129163>.
- Zhang H, Dou S, He F, Luo J, Wei L, Lu J. Genome-wide maps of ribosomal occupancy provide insights into adaptive evolution and regulatory roles of uORFs during Drosophila development. *PLoS Biol*. 2018;16(7):e2003903. <https://doi.org/10.1371/journal.pbio.2003903>.
- Lagha M, Bothma JP, Esposito E, Ng S, Stefanik L, Tsui C, Johnston J, Chen K, Gilmour DS, Zeitlinger J, Levine MS. Paused Pol II coordinates tissue morphogenesis in the Drosophila embryo. *Cell*. 2013;153(5):976–87. <https://doi.org/10.1016/j.cell.2013.04.045>.
- Zeitlinger J, Stark A, Kellis M, Hong JW, Nechaev S, Adelman K, Levine M, Young RA. RNA polymerase stalling at developmental control genes in the Drosophila melanogaster embryo. *Nat Genet*. 2007;39(12):1512–6. <https://doi.org/10.1038/ng.2007.26>.

28. Burow DA, Umeh-Garcia MC, True MB, Bakhaj CD, Ardell DH, Cleary MD. Dynamic regulation of mRNA decay during neural development. *Neural Dev.* 2015;21(10):11. <https://doi.org/10.1186/s13064-015-0038-6>.
29. Thomsen S, Anders S, Janga SC, Huber W, Alonso CR. Genome-wide analysis of mRNA decay patterns during early *Drosophila* development. *Genome Biol.* 2010;11(9):R93. <https://doi.org/10.1186/gb-2010-11-9-r93>.
30. Burow DA, Martin S, Quail JF, Alhusaini N, Collier J, Cleary MD. Attenuated Codon Optimality Contributes to Neural-Specific mRNA Decay in *Drosophila*. *Cell Rep.* 2018;24(7):1704–12. <https://doi.org/10.1016/j.celrep.2018.07.039>.
31. Jackson RJ, Hellen CU, Pestova TV. The mechanism of eukaryotic translation initiation and principles of its regulation. *Nat Rev Mol Cell Biol.* 2010;11(2):113–27. <https://doi.org/10.1038/nrm2838>.

Publisher's Note

Springer Nature remains neutral with regard to jurisdictional claims in published maps and institutional affiliations.

Ready to submit your research? Choose BMC and benefit from:

- fast, convenient online submission
- thorough peer review by experienced researchers in your field
- rapid publication on acceptance
- support for research data, including large and complex data types
- gold Open Access which fosters wider collaboration and increased citations
- maximum visibility for your research: over 100M website views per year

At BMC, research is always in progress.

Learn more biomedcentral.com/submissions

