

UC Irvine

UC Irvine Previously Published Works

Title

Subcortical Brain Volume, Regional Cortical Thickness, and Cortical Surface Area Across Disorders: Findings From the ENIGMA ADHD, ASD, and OCD Working Groups

Permalink

<https://escholarship.org/uc/item/7vw6s3mw>

Journal

American Journal of Psychiatry, 177(9)

ISSN

0002-953X

Authors

Boedhoe, Premika SW
van Rooij, Daan
Hoogman, Martine
[et al.](#)

Publication Date

2020-09-01

DOI

10.1176/appi.ajp.2020.19030331

Peer reviewed



HHS Public Access

Author manuscript

Am J Psychiatry. Author manuscript; available in PMC 2021 September 01.

Published in final edited form as:

Am J Psychiatry. 2020 September 01; 177(9): 834–843. doi:10.1176/appi.ajp.2020.19030331.

Subcortical brain volume, regional cortical thickness and cortical surface area across attention-deficit/hyperactivity disorder (ADHD), autism spectrum disorder (ASD), and obsessive-compulsive disorder (OCD)

A full list of authors and affiliations appears at the end of the article.

These authors contributed equally to this work.

Abstract

Objective: Attention-deficit/hyperactivity disorder (ADHD), autism spectrum disorder (ASD), and obsessive-compulsive disorder (OCD) are common neurodevelopmental disorders that frequently co-occur. We aimed to directly compare all three disorders. The ENIGMA consortium is ideally positioned to investigate structural brain differences across these disorders.

Methods: Structural T1-weighted whole-brain MRI of controls ($n=5,827$) and patients with ADHD ($n=2,271$), ASD ($n=1,777$), and OCD ($n=2,323$) from 151 cohorts worldwide were analyzed using standardized processing protocols. We examined subcortical volume, cortical thickness and surface area differences within a mega-analytical framework, pooling measures extracted from each cohort. Analyses were performed separately for children, adolescents, and adults using linear mixed-effects models adjusting for age, sex and site (and intra-cranial volume (ICV) for subcortical and surface area measures).

Results: We found no shared differences among all three disorders, while shared differences between any two disorders did not survive multiple comparisons correction. Children with ADHD compared to those with OCD had smaller hippocampal volumes, possibly influenced by IQ. Children and adolescents with ADHD also had smaller ICV than controls and those with OCD or ASD. Adults with ASD showed thicker frontal cortices compared to adult controls and other clinical groups. No OCD-specific differences across different age-groups and surface area differences among all disorders in childhood and adulthood were observed.

Conclusion—Our findings suggest robust but subtle differences across different age-groups among ADHD, ASD, and OCD. ADHD-specific ICV and hippocampal differences in children and adolescents, and ASD-specific cortical thickness differences in the frontal cortex in adults support previous work emphasizing structural brain differences in these disorders.

Corresponding author: Daan van Rooij, PhD d.vanrooij@donders.ru.nl.

see excel sheet for full list of authors

All other authors from the ENIGMA ADHD working group have no conflicts of interest related to this study.

Introduction

Attention-deficit/hyperactivity disorder (ADHD), autism spectrum disorder (ASD), and obsessive-compulsive disorder (OCD) are common neurodevelopmental disorders with a lifetime prevalence of 2.5–5%, ~1%, and 2.3%, respectively (1–3). Symptoms mostly develop early in life (ADHD, ASD) or later in childhood (OCD) and often persist into adulthood. Characteristic symptoms include inattentiveness, impulsivity and hyperactivity for ADHD; impairments in social communication and restricted and stereotyped behaviors for ASD; and repetitive thoughts (obsessions) and behaviors or mental acts (compulsions) that cause distress or anxiety for OCD. Although each disorder is distinguished by its own core symptoms, the disorders frequently co-occur and share overlap in phenomenology and pathophysiology (4,5).

There are parallels between the uncontrollable impulsive behaviors of ADHD and the excessive and compulsive rituals of OCD and ASD. Impaired response inhibition and cognitive control processes may underlie the cross-disorder traits within the impulsive-compulsive spectrum (6), implicating cortico-striato-thalamo-cortical and fronto-parietal networks (7). It remains unclear which morphological brain abnormalities within these networks are shared (non-specific) versus distinct (specific to one disorder).

Imaging studies, including meta-analyses, have generally compared one of the three disorders to healthy controls (8–12). Large-scale studies generally yielded small to moderate effect sizes, indicating that disorder-associated differences are subtle (13–17). Few structural imaging studies have directly compared these three disorders (18,19), mostly in small numbers and with inconsistent results (20). A meta-analysis including 931 patients with ADHD and 928 with OCD reported shared smaller ventromedial prefrontal cortex gray matter volume, ADHD-specific smaller gray matter volume in basal ganglia and insula, and OCD-specific smaller volume of rostral and dorsal anterior cingulate and medial prefrontal cortex (21). Another meta-analysis comparing structural brain differences in 911 patients with ASD and 928 with OCD reported shared differences in the dorsal medial prefrontal cortex and OCD-specific differences in the basal ganglia (22). However, despite their clinical overlap, no structural gray matter study so far compared all three disorders.

The ENIGMA consortium (23) includes the largest samples for ADHD, ASD, and OCD worldwide (13–17). The consortium also improves on earlier meta-analyses by using harmonized protocols for brain segmentation and quality control procedures across ENIGMA working groups, and by pooling extracted individual participant data. The ENIGMA consortium is therefore ideally positioned to investigate overlap and specificity of structural brain differences across disorders.

Here, we present the largest comparative study investigating subcortical and cortical differences across ADHD, ASD, and OCD. We extracted subcortical volumes, cortical thickness, and cortical surface area estimates of 12,198 individuals from 151 cohorts worldwide, using harmonized data processing protocols. Based on previous meta- and mega-analyses, we expected to find ADHD-specific differences in frontal and temporal surface areas and basal ganglia volumes in children (14,15), ASD-specific differences in frontal and

temporal cortical thickness (13), and OCD-specific differences in the thalamus of pediatric patients and the pallidum of adult patients (16). We expected that differences in the striatum and dorsomedial prefrontal cortex would be observed across disorders (21,22).

Methods

Samples

The ENIGMA-ADHD working group includes 48 cohorts from 34 research institutes, with neuroimaging and clinical data from patients with ADHD and healthy controls. The ENIGMA-ASD working group includes 56 cohorts from 38 research institutes, with neuroimaging and clinical data from patients with ASD and healthy controls. The ENIGMA-OCD working group includes 47 cohorts from 34 research institutes, with neuroimaging and clinical data from patients with OCD and healthy controls..

All working groups included data from subjects across the lifespan. As prior results suggested differential effects between pediatric (<12 years), adolescent (12–18 years), and adult (≥ 18 years) patients, we performed separate mega-analyses for these three age-groups. In total, we analyzed data from 2,271 patients with ADHD, 1,777 with ASD, 2,323 with OCD, and 5,827 healthy controls. All local institutional review boards permitted the use of measures extracted from the coded data for mega-analyses.

Image Acquisition and Processing

Structural T₁-weighted whole-brain Magnetic Resonance Spectroscopy (MRI) was acquired and processed locally. Image acquisition parameters for each cohort are listed in Supplementary Tables S1–S3. All cortical parcellations were performed with the fully automated segmentation program FreeSurfer, version 5.3, following standardized ENIGMA protocols to harmonize analyses and quality control (QC) procedures across multiple sites (<http://enigma.ini.usc.edu/protocols/imaging-protocols/>). Segmentations of seven bilateral subcortical and 34 bilateral cortical regions of interest according to the Desikan-Killiany atlas were statistically evaluated for outliers, and subsequently visually inspected for segmentation success. Individual volumes with poor segmentation were removed, as well as subjects with overall poor segmentation quality. All the quality control was performed locally on each site, and only data of sufficient quality was sent for inclusion in the ENIGMA cohorts. All reported group sizes in this manuscript are after QC. Details on image exclusion criteria and quality control are presented in Supplementary Information S11. All cohorts of each working group underwent identical processing and quality control procedures.

Statistical Analysis

We pooled extracted subcortical volumes, cortical thickness and cortical surface area measures from individual subjects across all cohorts from the different working groups into one database to perform a mega-analysis. We examined differences among patients groups and controls using linear mixed-effects models in STATA; mixed models are used to take into account the differences between sites. The means of the left and right hemisphere of 34 cortical regions (separately for cortical thickness and cortical surface area), whole-

hemisphere measures (average thickness and total surface area), and seven subcortical regions were used in the mega-analyses. To obtain comparable standardized regression coefficients (effect sizes) for all comparisons the z-scores for each of the cortical and subcortical regions-of-interest served as the outcome measures, and the diagnoses (ADHD, ASD, OCD, and HC) were included as separate independent variables of interest, using three dummy variables. Disorder specific differences were assessed by alternating the different diagnoses as reference category. Shared differences were assessed using the HC as a reference category. A random intercept for cohort was entered to account for clustering within cohorts; if necessary (i.e. when there was a significant improvement of the model fit), a random slope for diagnosis*cohort was included to account for different effect sizes between cohorts within the different working groups (24). Age and sex were included as covariates (25,26); for the surface area and subcortical volume analyses, ICV was also added as a covariate, since these measures scale with head size (27). The standard formula with a putative random slope therefore looks as follows: *MRI_feature_zscore* ~ *Dx1* + *Dx2* + *Dx3* + *Age* + *Sex* + (*Dx*cohort*), with *Dx1–3* referring to *Diagnostic groups*.

To detect potentially different effects of disorder with age, we performed all analyses separately for pediatric, adolescent, and adult patients. Because only a limited number of cohorts had data on IQ and medication use, sensitivity analyses were performed to investigate how IQ and psychotropic medication use might have influenced the disorder differences. For medication use (yes/no at time of scanning), stratified analyses according to medication status were performed. With respect to IQ, we included the variable as an additional covariate in the analyses. The Benjamini-Hochberg false discovery rate (FDR) was used to control for multiple comparisons within each model, with p-values adjusted separately for each age-group and for each modality (cortical thickness, surface area and subcortical volume). Results were considered significant if the FDR-corrected p-value (q) was 0.05.

To quantify the robustness of the main between group comparisons, additional leave-one-site-out cross validation was performed for each of the models (see supplementary table 3–13). For this cross-validation, the same model was repeatedly performed, each time removing one of the individual sites from the cohort. We report the distribution of the p-values (mean, min and max p-value after all iterations), indicating how strongly the p-value of the comparison was influenced by single-site effects.

Results

The demographic and clinical characteristics of participants are summarized per age category in Table 1a–c (entire sample Supplementary Table S4), these are also the final numbers of subjects used in each of the analyses. Results not surviving multiple comparison correction, but with p-values <0.05 were considered trends and are described for the main analyses in Supplemental Information SI2. Based on our statistical tests, indicating an effect is *specific* means we observe a significant difference between a diagnostic group and the control group but not necessarily between a diagnostic group, and each of the three other groups, but not the others. It should be noted this is distinct from diagnostic specificity based on a full interaction model as recommended in (43)”

Shared subcortical and cortical differences across clinical groups compared to healthy controls

Children with ADHD and those with ASD showed some overlap in *subcortical volume* and *cortical thickness* differences compared to controls (Supplementary Information S12), however none of these results survived multiple comparison correction (Supplementary Tables S5–S6). In *adolescents*, we did not observe shared *subcortical and cortical* differences among any of the disorders (Supplementary Tables S7–S9). *Adult* patients with OCD and those with ASD showed smaller hippocampal volumes compared to adult controls, however this finding did not survive multiple comparison correction in adults with ASD (Supplementary Table S10). Adult patient groups showed no overlap in *cortical* differences (Supplementary Tables S11–S12). Details on differences compared to healthy controls per patient group can be found in Supplementary Tables S5–S13.

Disease-specific subcortical and cortical differences

Children: Figure 1a depicts the pattern of *subcortical volume* differences in children. Children with ADHD showed significantly smaller ICV compared to those with ASD (effect size=–0.23) or OCD (effect size=–0.28). Children with ADHD (effect size=–0.22) also showed smaller hippocampal volumes compared to children with OCD. No significant *cortical* differences among disorders survived multiple comparison correction (Supplementary Tables S15–S16 & Supplementary Information S12).

Adolescents: Adolescents with ADHD had significantly smaller ICV compared to those with ASD (effect size=–0.22) or OCD (effect size=–0.19), shown in Figure 1b (Supplementary Table S17). However, the latter did not survive multiple comparison correction. Group differences in *cortical thickness* did not survive multiple comparison correction (Supplementary Table S18 & Supplementary Information S12). *Surface area* analysis revealed significantly lower surface area of the medial orbitofrontal cortex (effect size=–0.22) in patients with OCD compared to patients with ADHD (Supplementary Table S19).

Adults: None of the *subcortical* volumes differed significantly among adult patient groups (Figure 1c & Supplementary Table S20). *Cortical thickness* analysis revealed significantly thicker cortical gray matter in several frontal regions in adults with ASD compared to adults with OCD or ADHD (Figure 2) with effect sizes varying between 0.17 and 0.30. Adults with OCD did not differ significantly from those with ADHD (Supplementary Table S21). *Surface area* analysis revealed that none of the regions differed significantly among patient groups (Supplementary Table S22).

Influence of medication on cross-disorder effects

Medication status information was incomplete. Table 1a–c lists the numbers of patients for whom information about medication status at the time of scanning was available.

Children: The smaller ICV between children with ADHD and those with OCD (effect size=–0.32) or those with ASD (effect size=–0.19) may be driven by the unmedicated children (Supplementary Table S23) since ICV did not significantly differ among

disorders when comparing the medicated children (Supplementary Tables S24). No *cortical* differences survived multiple comparison correction when comparing unmedicated children among disorders (Supplementary Tables S25 and S26).

Medicated children with OCD had larger amygdala volumes than medicated children with ADHD (effect size=0.43) (Supplementary Table S24). Medicated children with ASD showed a thicker cuneus cortex (effect size=0.60) compared to medicated children with OCD and a thinner middle temporal gyrus (effect size=-0.44) compared to medicated children with ADHD (Supplementary Table S27). No differences in *surface area* differences survived multiple comparison correction when comparing medicated children among disorders (Supplementary Tables S28).

Adolescents & Adults: Except for significantly larger *surface area* of the parahippocampal gyrus in unmedicated adults with ASD (effect size=0.33) compared to unmedicated adults with ADHD (Supplementary Table S29), no significant *subcortical* and *cortical* differences survived multiple comparison correction when comparing unmedicated (Supplementary Tables S30–S34) or medicated (Supplementary Tables S35–S40) adults and adolescents among disorders. Details on disease-specific differences for unmedicated or medicated patients compared to controls can be found in Supplementary Tables S41–S58.

Adjusting for Individual Differences in IQ

Information about IQ was incomplete. Table 1a-c shows the number of patients for whom IQ scores were available. We did not have sufficient IQ data to include *adult* patients with OCD into the analysis (Table 1a). Therefore, results for *adults* are based on ASD, ADHD, and HC only.

Adjusting for IQ resulted in similar findings as the main results across all age-groups (Supplementary Tables S59–S67). However, *subcortical volume* analysis did not show smaller hippocampal volumes in children with ADHD and children with ASD compared to those with OCD (Supplementary Table S59). *Cortical thickness* analysis additionally revealed significant thicker cortices of pars orbitalis (effect size=0.20), superior frontal gyrus (effect size=0.22), and frontal pole (effect size=0.23) in adults with ASD compared to adults with ADHD (Supplementary Table S67). Details on disease-specific differences compared to healthy controls adjusted for IQ can be found in Supplementary Tables S65–S73.

Supplementary robustness analyses

The leave-one-site-out cross-validation analyses (supplementary table 3–13) indicated that the main effects of diagnostic group in all age-bins was not influenced by single outlying site effects. Further scatterplots with polynomial age-fits for several selected key MRI features can be viewed in SI3, demonstrating the full distribution of data points over the lifespan for each diagnostic group.

SI4 shows for several key MRI features the Estimated Marginal Means for each diagnostic group after the main group comparisons model has been run, as well as full distributions of the residuals (with and without correction for site). These figures demonstrate that the inclusion of random slopes per site leads to more normally distributed residuals.

SI5–7 show meta-analytic results for several key MRI features for each age-bin, containing both forest plots per site as well as the average meta-analytic results. These plots demonstrate considerable heterogeneity in the effect size between site, as well as overall smaller effect sizes in the mean meta-analysis result per MRI feature than those reported in our main mega-analysis.

As previous studies have shown field-strength may influence FreeSurfer segmentations (42), we have repeated the main between-group comparisons, split by sites employing either 1.5T or 3T scanner. As demonstrated in supplementary table 75, we mostly have a much larger sample of 3T scans. The results of these comparisons (see supplementary tables 75–84) indicate that the between-group results are mostly stable across field-strengths.

Discussion

This study comprised the largest neuroimaging investigation to date of structural brain alterations across ADHD, ASD and OCD. Results revealed differing patterns of subcortical and cortical differences among the disorders across childhood, adolescence, and adulthood. We found ADHD-specific smaller ICV in children and adolescents, and ASD-specific thicker frontal cortices in adults. We did not find OCD-specific differences across the different age-groups. No brain differences were shared among all three disorders.

Previous ENIGMA disease working group results, comparing patients with distinct disorders to controls, were mostly replicated, albeit not always using an FDR-corrected threshold. The current study included more patients and considerably more controls than the previously published working group studies (13–17). Accordingly, the present investigation may more accurately represent the normal heterogeneity in the control population. Importantly, our method allowed different mean control group outcomes per cohort, meaning that it statistically accounted for the heterogeneity amongst controls from different cohorts (24).

Overall, results were subtle with small to moderate effect sizes. These effect sizes emerge even after combining dozens of different scanner types and rise above the noise. Large-scale studies like those of the ENIGMA consortium convey another important message mainly by not replicating the extremely large effect sizes that have been found in previous research with smaller samples. Small clinical samples are often rather homogeneous samples carefully selected on the basis of a specific set of in- and exclusion criteria. Homogeneous samples can increase statistical power to discover larger effect sizes, but are typically not representative of the broader population, and such effect sizes are less likely to generalize to the population where patient groups are highly heterogeneous.

Smaller amygdala volume and thinner frontal and temporal cortices might be shared differences in children with ASD and ADHD (Supplementary Information SI2). We did not observe similar shared differences in the adolescents and adults with ASD and ADHD. These findings may be indicative of a more general delayed brain development (18,29). Smaller hippocampus volume might be a shared alteration in adults with ASD and OCD (Supplementary Information SI2). Hippocampal differences are also described in other psychiatric disorders, such as major depressive disorder, schizophrenia and bipolar disorder

(30,31). Decreased hippocampal volume may reflect a disorder non-specific effect, potentially related to chronic stressors (32).

Deficits in social communication and interaction are hypothesized to be related to a thinner temporal cortex (33). Our results fit with the involvement of the temporal cortex in ASD compared to controls, but we did not detect temporal cortex differences in patients with ASD compared to those with ADHD or OCD. A thicker cortex of several frontal regions was specific to patients with ASD and has been linked to impaired cognitive control and executive dysfunction (13,34). The pattern of thinner temporal and thicker frontal cortices in patients with ASD has been reported in longitudinal studies and suggests accelerated expansion in early childhood, accelerated thinning in later childhood and adolescence, and decelerated thinning in adulthood (35). Although executive dysfunction is present in all three patient groups (4,5), diagnostic categories might differ in executive functioning profiles. Future studies, such as the COMPULS study (36), that focus on neural correlates of executive functioning in all three patient groups will give more insight in this.

Inattention, hyperactivity and impulsivity are the main symptoms of ADHD, presumably modulated by abnormal fronto-striatal circuits (37). Our study confirms frontal surface area and striatal volume differences in children with ADHD compared to controls, but we did not detect these fronto-striatal differences in patients with ADHD compared to those with ASD or OCD. Smaller ICV did appear specific to children and adolescents with ADHD. These results support the hypothesis that differences in ADHD may be due to a delay in brain maturation (29), which possibly normalizes in adulthood. These results are also in line with the genetic correlation between risk for ADHD and smaller ICV (38).

Children with ASD (Supplementary Info SI2) and ADHD seemed to have smaller hippocampal volumes compared to children with OCD. This effect was not detected when adjusting for IQ. Although the sensitivity analysis adjusting for IQ was performed in a smaller subgroup, these findings indicate that the hippocampal volume differences may be driven by IQ differences among patient groups. Indeed, previous studies have shown an association between IQ and hippocampal volume (39). Further cross-disorder analyses adjusted for IQ revealed similar results as the main analyses across all age-groups.

Cross-disorder main effects were not detected when comparing medicated patients and unmedicated patients separately. However, these analyses may have been underpowered to detect the small effect sizes we observed in the larger combined group due to smaller sample sizes when stratifying patients according to medication status.

Two studies performed VBM meta-analyses and reported shared differences and disease specific differences between patients with ASD and OCD, and patients with ADHD and OCD, respectively (21,22). Our findings do not corroborate with these findings. This inconsistency might reflect reporting bias in these meta-analyses of published studies and/or differences in analytical methods. FreeSurfer segments brain regions based on probabilistic information from a predefined atlas compared to VBM's voxel-wise registration. The differences in these methodological approaches may lead to diverging results. Mainly global or regional differences in structure can be inferred from atlas-based FreeSurfer analyses, as

opposed to voxel-level morphology with VBM. Thus local morphological differences may not be detected when averaging across regions (40).

Strengths and Limitations of the study

This study has several strengths and limitations. As the largest mega-analysis to date, sample size is an obvious strength. Another strength is harmonization of segmentation protocols across all participating sites, reducing variation caused by differences in methods. QC procedures were also harmonized across site, however, given the large datasets involved, QC was largely based on automated outlier detection before visual inspection. This means that more subtle biases (for instance limited head motion) may have remained unnoticed.

Another key limitation is the variation attributable to different scanners and acquisition protocols across cohorts. This issue was mitigated by the formal consideration of potential site differences in all statistical analyses. We have included comparisons of 1.5 vs 3 Tesla field strength in the supplement (see SI2), indicating that our main group effects are largely unaffected by field strength. However, other acquisition parameters like RF coil or imaging sequence were not available from sufficient sites to run sensitivity analyses, which must be considered a limitation of the current study, as these factors may influence segmentation results (41).

Another strength of the study was the use of mega- as opposed to meta-analysis. The comprehensive evaluation of missing data and greater flexibility in control of confounds at the level of individual patients and specific studies are significant advantages. Mega-analyses are also recommended as they avoid the assumptions of within-study normality and known within-study variances, which are especially problematic when including small samples. Within supplementary materials 5–7 we demonstrate forest plots of the main group effects split by site, together with overall meta-analysis effects and I² heterogeneity statistics. These results indicate substantial heterogeneity in the effect sizes between individual sites. Indeed our recent study comparing meta- and mega-analytical methods showed that the mega-analytical framework appears to be the better approach for investigating structural neuroimaging data in multi-center studies (24).

We did not perform stratified analyses for reported sex even though ADHD and ASD have a strong sex bias. This issue was mitigated by adjusting for sex in all statistical analyses. Moreover the independent working groups did not observe sex specific effects in their patient groups (13–17).

We chose to differentiate children, adolescents, and adults; cut-offs might not have been optimal, given different disorder onsets. Our rationale was to minimize differences in average age among disorders – in addition to age as a nuisance covariate – and thus to minimize the detection of age effects rather than disease effects. Separate analysis by age group also avoids the difficulties in modeling possibly complex – yet unknown, a priori – nonlinear age effects that might also differ among groups. The primary focus of this manuscript was cross-disorder comparisons. Yet such analyses of age effects are of great interest and should be addressed in future research using multivariate pattern recognition

e.g., the support vector machine that can detect informative patterns in the data that may not be identified by traditional linear analyses.

Structural differences among disorders did not show any significant association with medication use and IQ. Nonetheless, we did not have data on medication use and IQ for all patients, indicating insufficient statistical power to address this issue with confidence. We also lacked detailed information on psychotropic treatment. Further efforts are required to draw valid conclusions on the impact of psychotropic medication use on brain structure.

Effects of comorbidity or general phenotypic overlap among ADHD, ASD, and OCD could not be analyzed, because this was not systematically addressed across the cohorts of the different working groups. Presence of comorbidities might have reduced disorder-specific findings. However, excluding comorbid conditions would have ignored complex interactions that are often integral to the disorder. Future studies should test to what extent the comorbid cases differ from the “pure” disorders. Greater consideration of how data may be used in international collaborations such as ENIGMA may influence the collection of data in future studies, which may increase their impact beyond their primary focus.

Conclusion

To conclude, we found subcortical and cortical differences across different age categories among ADHD, ASD and OCD. We found ASD-specific cortical thickness differences in the frontal cortex of adult patients and ADHD-specific subcortical differences in children and adolescents. We did not find shared differences among the three disorders and shared differences across any two disorders did not survive multiple comparison corrections. Further work, e.g., multivariate pattern recognition analyses and normative modeling incorporating neural correlates, cognitive and genetic variables will be useful in understanding the mechanisms underlying distinct and shared deficits in these neurodevelopmental disorders.

Supplementary Material

Refer to Web version on PubMed Central for supplementary material.

Authors

Premika S.W. Boedhoe, Ph.D.[#], Daan van Rooij, Ph.D.[#], Martine Hoogman, Ph.D., Jos W.R. Twisk, Ph.D., Lianne Schmaal, Ph.D., Yoshinari Abe, M.D., Ph.D., Pino Alonso, M.D., Ph.D., Stephanie H. Ameis, M.D., M.Sc., Anatoly Anikin, Ph.D., Alan Anticevic, Ph.D., Celso Arango, M.D., Ph.D., Paul D. Arnold, M.D., Ph.D., Philip Asherson, Ph.D., Francesca Assogna, Ph.D., Guillaume Auzias, Ph.D., Tobias Banaschewski, M.D., Ph.D., Alexander Baranov, Ph.D., Marcelo C. Batistuzzo, Ph.D., Sarah Baumeister, Ph.D., Ramona Baur-Streubel, Ph.D., Marlene Behrmann, Ph.D., Mark A. Bellgrove, Ph.D., Francesco Benedetti, M.D., Jan C. Beucke, Ph.D., Joseph Biederman, M.D., Irene Bollettini, Ph.D., Anushree Bose, Ph.D., Janita Bralten, Ph.D., Ivanei E. Bramati, Ph.D., Daniel Brandeis, Ph.D., Silvia Brem, Ph.D., Brian P. Brennan, M.D., M.M.Sc., Geraldo F. Busatto, Ph.D., Sara Calderoni, M.D.,

Ph.D., Anna Calvo, M.Sc., Rosa Calvo, M.D., Ph.D., Francisco X. Castellanos, M.D., Mara Cercignani, Ph.D., Tiffany M. Chaim-Avancini, Ph.D., Kaylita C. Chantiluke, Ph.D., Yuqi Cheng, Ph.D., Kang Ik K. Cho, Ph.D., Anastasia Christakou, Ph.D., David Coghill, M.D., Annette Conzelmann, M.D., Ph.D., Ana I. Cubillo, Ph.D., Anders M. Dale, Ph.D., Sara Dallaspezia, M.D., Eileen Daly, Ph.D., Damiaan Denys, M.D., Ph.D., Christine Deruelle, Ph.D., Adriana Di Martino, Ph.D., Ilan Dinstein, Ph.D., Alysa E. Doyle, Ph.D., Sarah Durston, Ph.D., Eric A. Earl, B.Sc., Christine Ecker, Ph.D., Stefan Ehrlich, M.D., Ph.D., Benjamin A. Ely, B.S., Jeffrey N. Epstein, Ph.D., Thomas Ethofer, Ph.D., Damien A. Fair, Ph.D., Andreas J. Fallgatter, M.D., Stephen V. Faraone, Ph.D., Jennifer Fedor, B.Sc., Xin Feng, M.Sc., Jamie D. Feusner, M.D., Jackie Fitzgerald, Ph.D., Kate D. Fitzgerald, M.D., Jean-Paul Fouche, M.Sc., Christine M. Freitag, Ph.D., Egill A. Fridgeirsson, M.Sc., Thomas Frodl, M.D., Ph.D., Matt C. Gabel, Ph.D., Louise Gallagher, M.D., Ph.D., Tinatin Gogberashvili, Ph.D., Ilaria Gori, M.Sc., Patricia Gruner, Ph.D., Deniz A. Gürsel, M.Sc., Shlomi Haar, Ph.D., Jan Haavik, M.D., Ph.D., Geoffrey B. Hall, Ph.D., Neil A. Harrison, Ph.D., Catharina A. Hartman, Ph.D., Dirk J. Heslenfeld, Ph.D., Yoshiyuki Hirano, Ph.D., Pieter J. Hoekstra, M.D., Ph.D., Marcelo Q. Hoexter, M.D., Ph.D., Sarah Hohmann, M.D., Marie F. Høvik, M.D., Hao Hu, Ph.D., Chaim Huyser, M.D., Ph.D., Neda Jahanshad, Ph.D., Maria Jalbrzikowski, Ph.D., Anthony James, M.R.C.P., M.R.Psych., Joost Janssen, Ph.D., Fern Jaspers-Fayer, Ph.D., Terry L. Jernigan, Ph.D., Dmitry Kapilushniy, Ph.D., Bernd Kardatzki, M.Sc., Georgii Karkashadze, Ph.D., Norbert Kathmann, Ph.D., Christian Kaufmann, Ph.D., Clare Kelly, Ph.D., Sabin Khadka, M.Sc., Joseph A. King, Ph.D., Kathrin Koch, Ph.D., Gregor Kohls, Ph.D., Kerstin Kohls, Ph.D., Masaru Kuno, M.D., Ph.D., Jonna Kuntsi, Ph.D., Gerd Kvale, Ph.D., Jun Soo Kwon, M.D., Ph.D., Luisa Lázaro, M.D., Ph.D., Sara Lera-Miguel, Ph.D., Klaus-Peter Lesch, M.D., Ph.D., Liesbeth Hoekstra, M.Sc., Yanni Liu, Ph.D., Christine Lochner, Ph.D., Mario R. Louza, M.D., Ph.D., Beatriz Luna, Ph.D., Astri J. Lundervold, Ph.D., Charles B. Malpas, Ph.D., Paulo Marques, Ph.D., Rachel Marsh, Ph.D., Ignacio Martínez-Zalacaín, M.Sc., David Mataix-Cols, Ph.D., Paulo Mattos, M.D., Ph.D., Hazel McCarthy, Ph.D., Jane McGrath, Ph.D., Mitul A. Mehta, Ph.D., José M. Menchón, M.D., Ph.D., Maarten Mennes, Ph.D., Mauricio Moller Martinho, M.D., M.S., Pedro S. Moreira, M.Sc., Astrid Morer, M.D. Ph.D., Pedro Morgado, M.D., Ph.D., Filippo Muratori, Ph.D., Clodagh M. Murphy, M.R.C.Psych., Ph.D., Declan G.M. Murphy, M.D., F.R.C.Psych., Akiko Nakagawa, M.D., Ph.D., Takashi Nakamae, M.D., Ph.D., Tomohiro Nakao, M.D., Ph.D., Leyla Namazova-Baranova, Ph.D., Janardhanan. C. Narayanaswamy, M.D., Rosa Nicolau, B.Sc., Joel T. Nigg, Ph.D., Stephanie E. Novotny, M.Sc., Erika L. Nurmi, M.D., Ph.D., Eileen Oberwelland Weiss, Ph.D., Ruth L. O’Gorman Tuura, Ph.D., Kirsten O’Hearn, Ph.D., Joseph O’Neill, Ph.D., Jaap Oosterlaan, Ph.D., Bob Oranje, Ph.D., Yannis Paloyelis, Ph.D., Mara Parellada, M.D., Ph.D., Paul Pauli, Ph.D., Chris Perriello, B.Sc., John Piacentini, Ph.D., Fabrizio Piras, Ph.D., Federica Piras, Ph.D., Kerstin J. Plessen, M.D., Ph.D., Olga Puig, Ph.D., J. Antoni Ramos-Quiroga, M.D., Ph.D., Y.C. Janardhan Reddy, M.D., Andreas Reif, M.D., Liesbeth Reneman, M.D., Ph.D., Alessandra Retico, Ph.D., Pedro G.P. Rosa, M.D., Katya Rubia, Ph.D., Oana Georgiana Rus, Ph.D., Yuki Sakai, M.D., Ph.D., Anouk Schranter, Ph.D., Lena

Schwarz, M.D., Lizanne J.S. Schveren, Ph.D., Jochen Seitz, M.D., Philip Shaw, M.D., Ph.D., Devon Shook, Ph.D., Tim J. Silk, Ph.D., H. Blair Simpson, M.D., Ph.D., Norbert Skokauskas, M.D., Ph.D., Juan Carlos Soliva Vila, Ph.D., Anastasia Solovieva, Ph.D., Noam Soreni, M.D., Carles Soriano-Mas, Ph.D., Gianfranco Spalletta, M.D., Ph.D., Emily R. Stern, Ph.D., Michael C. Stevens, Ph.D., S. Evelyn Stewart, M.D., Gustavo Sudre, Ph.D., Philip R. Szeszko, Ph.D., Leanne Tamm, Ph.D., Margot J. Taylor, Ph.D., David F. Tolin, Ph.D., Michela Tosetti, Ph.D., Fernanda Tovar-Moll, M.D., Ph.D., Aki Tsuchiyagaito, Ph.D., Theo G.M. van Erp, Ph.D., Guido A. van Wingen, Ph.D., Alasdair Vance, M.D., Ganesan Venkatasubramanian, M.D., Ph.D., Oscar Vilarroya, Ph.D., Yolanda Vives-Gilabert, Ph.D., Georg G. von Polier, M.D., Susanne Walitza, M.D., M.Sc., Gregory L. Wallace, Ph.D., Zhen Wang, M.D., Ph.D., Thomas Wolfers, M.Sc., Yuliya N. Yoncheva, Ph.D., Je-Yeon Yun, M.D., Ph.D., Marcus V. Zanetti, Ph.D., Fengfeng Zhou, Ph.D., Georg C. Ziegler, M.D., Kathrin C. Zierhut, Ph.D., Marcel P. Zwiers, Ph.D., ENIGMA-ADHD working group[#], ENIGMA-ASD working group[#], ENIGMA-OCD working group[#], Paul M. Thompson, Ph.D., Dan J. Stein, M.D., Ph.D., Jan Buitelaar, M.D., Ph.D., Barbara Franke, Ph.D., Odile A. van den Heuvel, M.D., Ph.D., ENIGMA-ADHD, -ASD, and -OCD working groups

Affiliations

Disclosures and acknowledgements

ADHD working group

Disclosures

David Coghill served in an advisory or consultancy role for Lilly, Medice, Novartis, Oxford outcomes, Shire and Viforpharma. He received conference support or speaker's fee by Janssen McNeil, Lilly, Medice, Novartis, Shire and Sunovion. He is/has been involved in clinical trials conducted by Lilly & Shire. The present work is unrelated to the above grants and relationships. *Jonna Kuntsi* has given talks at educational events sponsored by Medice; all funds are received by King's College London and used for studies of ADHD. *Anders Dale* is a Founder of CorTechs Labs, Inc. He serves on the Scientific Advisory Boards of CorTechs Labs and Human Longevity, Inc., and receives research funding through a Research Agreement with General Electric Healthcare. *Paulo Mattos* was on the speakers' bureau and/or acted as consultant for Janssen-Cilag, Novartis, and Shire in the previous five years; he also received travel awards to participate in scientific meetings from those companies. The ADHD outpatient program (Grupo de Estudos do Déficit de Atenção/Institute of Psychiatry) chaired by Dr. Mattos has also received research support from Novartis and Shire. The funding sources had no role in the design and conduct of the study; collection, management, analysis, or interpretation of the data; or preparation, review, or approval of the manuscript. *Tobias Banaschewski* served in an advisory or consultancy role for Actelion, Hexal Pharma, Lilly, Lundbeck, Medice, Neurim Pharmaceuticals, Novartis and Shire. He received conference support or speaker's fee by Lilly, Medice, Novartis and Shire. He is/has been involved in clinical trials conducted by Shire & Viforpharma. He received royalties from Hogrefe, Kohlhammer, CIP Medien, Oxford University Press. The present work is unrelated to the above grants and relationships. *Katya Rubia* received speaker's fees from Shire, Medice and a grant from Shire pharmaceuticals for another project. *Jan Haavik* has received speaker fees from Eli Lilly, Shire, Medice and Biocodex. *Stephen V. Faraone*, in the past year, received income, potential income, travel expenses continuing education support and/or research support from Tris, Otsuka, Arbor, Ironshore, Shire, Akili Interactive Labs, VAYA, Ironshore, Sunovion, Supernus and Genomind. With his institution, he has US patent US20130217707 A1 for the use of sodium-hydrogen exchange inhibitors in the treatment of ADHD. *Joseph Biederman* is currently receiving research support from the following sources: AACAP, Feinstein Institute for Medical Research, Food & Drug Administration, Genentech, Headspace Inc., Lundbeck AS, Neurocentria Inc., NIDA, Pfizer Pharmaceuticals, Roche TCRC Inc., Shire Pharmaceuticals Inc., Sunovion Pharmaceuticals Inc., and NIH. Dr. Biederman has a financial interest in Avekshan LLC, a company that develops treatments for attention deficit hyperactivity disorder (ADHD). His interests were reviewed and are managed by Massachusetts General Hospital and Partners HealthCare in accordance with their conflict of interest policies. Dr. Biederman's program has received departmental royalties from a copyrighted rating scale used for ADHD diagnoses, paid by Bracket Global, Ingenix, Prophase, Shire,

Sunovion, and Theravance; these royalties were paid to the Department of Psychiatry at MGH. In 2019, Dr. Biederman is a consultant for Akili, Jazz Pharma, and Shire. Through MGH corporate licensing, he has a US Patent (#14/027,676) for a non-stimulant treatment for ADHD, and a patent pending (#61/233,686) on a method to prevent stimulant abuse. In 2018, Dr. Biederman was a consultant for Akili and Shire. *Kerstin Konrad* received speaking fees from Medice, Lilly and Shire. *Josep-Antoni Ramos-Quiroga* was on the speakers' bureau and/or acted as consultant for Eli-Lilly, Janssen-Cilag, Novartis, Shire, Lundbeck, Almirall, Braingaze, Sincrolab, Medice and Rubió in the last 5 years. He also received travel awards (air tickets + hotel) for taking part in psychiatric meetings from Janssen-Cilag, Medice, Rubió, Shire, and Eli-Lilly. The Department of Psychiatry chaired by him received unrestricted educational and research support from the following companies in the last 5 years: Eli-Lilly, Lundbeck, Janssen-Cilag, Actelion, Shire, Ferrer, Oryzon, Roche, Psious, and Rubió. *Klaus-Peter Lesch* served as a speaker for Eli Lilly and received research support from Medice, and travel support from Shire, all outside the submitted work. *Jan Buitelaar* has been in the past 3 years a consultant to / member of advisory board of / and/or speaker for Janssen Cilag BV, Eli Lilly, Medice, Shire, Roche, and Servier. He is not an employee of any of these companies, and not a stock shareholder of any of these companies. He has no other financial or material support, including expert testimony, patents, royalties. *Barbara Franke* has received educational speaking fees from Shire and Medice. *Susanne Walitza* has received lecture honoraria from Eli-Lilly, Opopharma in the last five years. *Daniel Brandeis* serves as an unpaid scientific consultant for an EU-funded neurofeedback trial. *Georgii Karkashadze* received payment for the authorship of the article and speaker fees from Sanofi and from Pikfarma. *Mario Louza* was on the speakers' bureau and/or acted as consultant for Janssen-Cilag and Shire in the previous five years; he also received travel awards to participate in scientific meetings from those companies. The present work is unrelated to the above grants and relationships. *Mark Bellgrove* has received speakers fees and travel expenses from Shire within the last 5 years. He is on the Scientific Advisory Board of Novita Healthcare. He is President of the Australian ADHD Professionals Association (AADPA).

Grant support

ENIGMA: received funding from the National Institutes of Health (NIH) Consortium grant U54 EB020403, supported by a cross-NIH alliance that funds Big Data to Knowledge Centers of Excellence (BD2K). We also are supported by the European College for Neuropsychopharmacology (ECNP) by a grant for the ECNP Network ADHD across the lifespan. *ADHD-WUE*: Data collection and analysis was supported by the Deutsche Forschungsgemeinschaft (KFO 125, TRR 58/A1 and A5, SFB-TRR 58/B01, B06 and Z02, RE1632/5-1) and the research leading to these results also received funding from the European Union's Seventh Framework Programme for research, technological development and demonstration under grant agreement no 602805 (Aggressotype) and the Horizon 2020 research and innovation programme under Grant no. 728018 (Eat2beNICE). *ADHD-DUB1 and DUB2*: The ADHD-DUB1 and DUB2 studies received funding from the Health Research Board Ireland. *ADHD-Mattos*: Ivanei Bramati, Paulo Mattos and Fernanda Tovar-Moll were supported by an IDOR intramural grant. *ADHD200-KKI*: We would like to acknowledge Lindsey Koenig, Michelle Talley, Jessica Foster, Deana Crocetti, Lindsey MacNeil, Andrew Gaddis, Marin Ranta, Anita Barber, Mary Beth Nebel, John Muschelli, Suresh Joel, Brian Caffo, Jim Pekar, Stacy Suskauer. Research was made possible due to the following funding sources: The Autism Speaks Foundation and NIH (R01 NS048527, R01MH078160 and R01MH085328), Johns Hopkins General Clinical Research Center (M01 RR00052), National Center for Resource (P41 RR15241), Intellectual and Developmental Disabilities Research Center (HD-24061) *ADHD200-NYU*: We would like to acknowledge Amy Roy, Andrea McLaughlin, Ariel Schvarcz, Camille Chabernaud, Chiara Fontani, Christine Cox, Daniel Margulies, David Anderson, David Gutman, Devika Jutagir, Douglas Slaughter, Dylan Gee, Emily Brady, Jessica Raithe, Jessica Sunshine, Jonathan Adelstein, Kristin Gotimer, Leila Sadeghi, Lucina Uddin, Maki Koyama, Natan Potler, Nicoletta Adamo, Rebecca Grzadzinski, Rebecca Lange, Samantha Adelsberg, Samuele Cortese, Saroja Bangaru, Xinian Zuo, Zarrar Shehzad and Zoe Hyde. Data collection was made possible thanks to funding from NIMH (R01MH083246), Autism Speaks, The Stavros Niarchos Foundation, The Leon Levy Foundation, and an endowment provided by Phyllis Green and Randolph C wen. *ADHD200-Peking*: we would like to acknowledge Jue-jing Ren, De-yi Wang, Su-fang Li, Zu-lai Peng, Peng Wang, Yun-yun Zhu, Zhao Qing. Research was made possible due to the following funding sources: The Commonwealth Sciences Foundation, Ministry of Health, China (200802073), The National Foundation, Ministry of Science and Technology, China (2007BAI17B03), The National Natural Sciences Foundation, China (30970802), The Funds for International Cooperation of the National Natural Science Foundation of China (81020108022), The National Natural Science Foundation of China (8100059), Open Research Fund of the State Key Laboratory of Cognitive Neuroscience and Learning. *ADHD200-OHSU*: We would like to acknowledge the Advanced Imaging Research Center, Bill Rooney, Kathryn L. Mills, Taciana G. Costa Dias, Michelle C. Fenesy, Bria L. Thurlow, Corrine A. Stevens, Samuel D. Carpenter, Michael S. Blythe, Colleen F. Schmitt. Research was made possible due to the following funding resources: K99/R00 MH091238 (Fair), R01 MH086654 (Nigg), Oregon Clinical and Translational Research Institute (Fair), Medical Research Foundation (Fair), UNCF/Merck (Fair), Ford Foundation (Fair). *ADHD-UKA*: KFO-112 and IRTG1328 was supported by the German Research Foundation (DFG). *DAT-London*: This work was supported in part by UK Medical Research, Council Grant G03001896 to J Kuntsi and NIH grants, R01MH62873 and R01MH081803 to SV Faraone. *IMPACT*: The IMPACT study was supported by a grant from the Brain & Cognition Excellence Program and a personal Vici grant (to Barbara Franke) of the Netherlands Organization for Scientific Research (NWO, grant numbers 433-09-229 and 016-130-669) and in part by the Netherlands Brain Foundation (grant number, 15F07[2]27) and the BBMRI-NL (grant CP2010-33). Funding was also provided by a pilot grant of the Dutch

National Research Agenda for the NeuroLabNL project. The research leading to these results also received funding from the European Community's Seventh Framework Programme (FP7/2007–2013) under grant agreement no. 602805 (Aggressotype), no. 278948 (TACTICS), and no. 602450 (IMAGEMEND). In addition, the project received funding from the European Union's Horizon 2020 research and innovation programme under the Marie Skłodowska-Curie grant agreement no. 643051 (MiND), under grant agreement no. 667302 (CoCA) and the grant agreement no. 728018 (Eat2beNICE). *NYU ADHD*: NYU data collection and sharing was supported by NIH grants T32MH67763, R01MH083246, K23MH087770, R01MH094639, and U01MH099059 and a grant from the Stavros S. Niarchos Foundation. *UAB-ADHD*: The study and its contributors received funding from the Ministerio de Economía y Competitividad under research grant SAF2012–32362 and : PI12/01139 from the Department of Health of the Government of Catalonia. Additional funding was obtained from the Generalitat de Catalunya. *ZI-CAPS*: The Neurofeedback study was partly funded by the project D8 of the Deutsche Forschungsgesellschaft collaborative research center 636. *ADHD-Rubia*: The study was funded by the UK Department of Health via the National Institute of Health Research Centre (BRC) for Mental Health South London and the Maudsley NHS Foundation Trust and the Institute of Psychiatry, King's College London. *CAPS_UZH*: The data contributed to this study were collected in two projects on ADHD and OCD in children and adolescents, supported by the Swiss National Science Foundation (projects No. 136249 Sinergia and No. 320030_130237) and the Hartmann Müller Foundation (No. 1460). *NeuroIMAGE*: This work was supported by NIH Grant R01MH62873, NWO Large Investment Grant 1750102007010 and grants from Radboud University Medical Center, University Medical Center Groningen and Accare, and VU University Amsterdam. This work was also supported by grants from NWO Brain & Cognition (433–09-242 and 056–13-015) and from ZonMW (60–60600-97–193). Further support was received from the European Union FP7 programmes TACTICS (278948) and IMAGEMEND (602450). *MTA*: Data collection and sharing for this project was funded by the NIDA MTA Neuroimaging Study (National Institute on Drug Abuse Grant Contract #: HHSN271200800009C). *NIH*: studies were supported by intramural grants at the National Institute of Mental Health and National Human Genome Research Institute. *OHSU*: The OHSU work was supported by NIMH grants R01MH86654, MH099064, and MH115357. *UCHZ*: This work was supported by the University Research Priority Program “Integrative Human Physiology” at the University of Zurich. *ACPU*: This research was conducted within the Academic Child Psychiatry Unit, University of Melbourne, Royal Children's Hospital and the Developmental Imaging research group, Murdoch Children's Research Institute, Melbourne, Victoria. National Health and Medical Research Council of Australia (NHMRC) project grants 384419 and 569533 provided funds for the data collection. It was also supported by the Murdoch Children's Research Institute, the Royal Children's Hospital and the Children's MRI Centre, The Royal Children's Hospital Foundation, and the RCH Mental Health Service, Department of Paediatrics The University of Melbourne and the Victorian Government's Operational Infrastructure Support Program. Tim Silk was supported by a NHMRC Career Development Award. *NICAP*: The Neuroimaging of the Children's Attention Project was funded by the National Medical Health and Research Council of Australia (NHMRC; project grant #1065895). Earlier funding of the Children's Attention Project was as funded by an NHMRC project grant #1008522 and a grant from the Collier Foundation. This research was conducted within the Developmental Imaging research group, Murdoch Children's Research Institute and the Children's MRI Centre, The Royal Children's Hospital, Melbourne, Victoria. It was supported by the Murdoch Children's Research Institute, The Royal Children's Hospital, The Royal Children's Hospital Foundation, Department of Paediatrics at The University of Melbourne and the Victorian Government's Operational Infrastructure Support Program. *Tübingen*: The recruitment of the Tübingen sample was funded by the Deutsche Forschungsgemeinschaft (DFG grant: ET 112/5–1). *Dundee*: This work was supported by a grant from TENOVUS SCOTLAND and was conducted in collaboration with the Dundee site of the ADHD Drugs Use Chronic Effects (ADDUCE) study (EU FP7 agreement No. **260576**). *ePOD*: The neuroimaging studies of the ePOD-MPH trial (NTR3103) were supported by faculty resources of the Academic Medical Center, University of Amsterdam, and by grant 11.32050.26 from the European Research Area Network Priority Medicines for Children (Sixth Framework Programme) to Liesbeth Reneman. *Sao Paulo*: The present investigation was supported by a 2010 NARSAD Independent Investigator Award (NARSAD: The Brain and Behavior Research Fund) awarded to Geraldo F. Busatto. Geraldo F. Busatto is also partially funded by CNPq-Brazil. *Sussex*: This study was supported by funding from Brighton and Sussex Medical School and the Dr. Mortimer and Dame Theresa Sackler Foundation. *Clinic Barcelona*: This work has received financial support from two grants, *Fundació la Marató de TV3–2009* (project number: 091810) and *Fondo de Investigaciones Sanitarias*, of the Spanish Ministry of Health (project number: PI11/01419). *Maarten Mennes*: supported by a Marie Curie International Incoming Fellowship within the 7th European Community Framework Programme, grant agreement n° 327340. *Jan Haavik*: Stiftelsen Kristian Gerhard Jebsen (SKGJ-MED 02). *Steve Faraone*: K.G. Jebsen Centre for Research on Neuropsychiatric Disorders, University of Bergen, Bergen, Norway

ASD working group

Disclosures

Dr. Anagnostou has served as a consultant or advisory board member for Roche and Takeda; she has received funding from the Alva Foundation, Autism Speaks, Brain Canada, the Canadian Institutes of Health Research, the Department of Defense, the National Centers of Excellence, NIH, the Ontario Brain Institute, the Physicians' Services Incorporated (PSI) Foundation, Sanofi-Aventis, and SynapDx, as well as in-kind research support from AMO Pharma; she receives royalties from American Psychiatric Press and Springer and an editorial honorarium

from Wiley. *Dr. Arango* has served as a consultant for or received honoraria or grants from Acadia, Abbott, Amgen, CIBERSAM, Fundación Alicia Koplowitz, Instituto de Salud Carlos III, Janssen-Cilag, Lundbeck, Merck, Instituto de Salud Carlos III (co-financed by the European Regional Development Fund “A way of making Europe,” CIBERSAM, the Madrid Regional Government [S2010/BMD-2422 AGES], the European Union Structural Funds, and the European Union Seventh Framework Programme under grant agreements FP7-HEALTH-2009–2.2.1–2-241909, FP7-HEALTH-2009–2.2.1–3-242114, FP7-HEALTH-2013–2.2.1–2-603196, and FP7-HEALTH-2013–2.2.1–2-602478), Otsuka, Pfizer, Roche, Servier, Shire, Takeda, and Schering-Plough. *Dr. Freitag* has served as a consultant for Desitin regarding issues on ASD. *Dr. De Martino* is a coauthor of the Italian version of the Social Responsiveness Scale, for which she may receive royalties. *Dr. Rubia* has received speaking honoraria from Eli Lilly, Medice, and Shire. *Dr. Buitelaar* has served as a consultant, advisory board member, or speaker for Eli Lilly, Janssen-Cilag, Lundbeck, Medice, Novartis, Servier, Shire, and Roche, and he has received research support from Roche and Vifor. *Dr. Gallagher* received funding from the Meath Foundation and The National Childrens Research Centre in Ireland. The other authors report no financial relationships with commercial interests.

Grant support

ENIGMA received funding from NIH Consortium grant U54 EB020403 to *Dr. Paul Thompson*, supported by a cross-NIH alliance that funds Big Data to Knowledge Centers of Excellence (BD2K). This research was further supported by the European Community’s Seventh Framework Programme (FP7/2007–2013) under grant agreement number 278948 (TACTICS), and the Innovative Medicines Initiative Joint Undertaking under grant agreement number 115300 (EU-AIMS), resources of which are composed of financial contributions from the European Union’s Seventh Framework Programme (FP7/2007–2013) and the European Federation of Pharmaceutical Industries and Associations companies’ in-kind contribution. The Canadian samples were collected as part of the Province of Ontario Neurodevelopmental Disorders (POND) Network, funded by the Ontario Brain Institute (grant IDS-I1-02 to *Dr. Anagnostou* and *Dr. Lerch*). *Dr. Calvo* has received The Marató TV3 Foundation Grant No.091710, the Carlos III Health Institute (PI091588) co-funded by FEDER funds/European Regional Development Fund (ERDF), “a way to build Europe”. *Declan Murphy* has received funding from the Innovative Medicines Initiative 1 and 2 Joint Undertaking under grant agreement no.115300 (EU AIMS) and no. 777394 (AIMS-2-TRIALS), the National Institute for Health Research (NIHR) Biomedical Research Centre at South London and Maudsley NHS Foundation Trust and King’s College London, and a Medical Research Council grant no. G0400061.

OCD working group

Disclosures

Dr. Baker has received research support from the National Institute of Mental Health (NIMH) and Valera Health. *Dr. Brennan* has received consulting fees from Rugen Therapeutics and Nobilis Therapeutics and research grant support from Eli Lilly, Transcept Pharmaceuticals, and Biohaven Pharmaceuticals. *Dr. Mataix-Cols* receives royalties for contributing articles to UpToDate, Wolters Kluwer Health and fees from Elsevier for editorial tasks (all unrelated to the submitted work). *Dr. Simpson* received research support for multi-site clinical trial from Biohaven, Inc; royalties from UpToDate, Inc and Cambridge University Press. *Dr. Stein* has received research grants and/or consultancy honoraria from AMBRF, Biocodex, Cipla, Lundbeck, National Responsible Gambling Foundation, Novartis, Servier, and Sun in the past 3 years. *Dr. Walitza* has received lecture honoraria Opopharma in the last 3 years. Her work was supported in the last 3 years by the Swiss National Science Foundation (SNF), diverse EU FP7s, HSM Hochspezialisierte Medizin of the Kanton Zurich, Switzerland, Bfarm Germany, Zinep, Hartmann Müller Stiftung, Olga Mayenfisch. All other authors from the ENIGMA OCD working group have no conflicts of interest related to this study.

Grant support

The **ENIGMA-Obsessive Compulsive Disorder Working-Group** gratefully acknowledges support from the NIH BD2K award U54 EB020403 (PI: *Dr. Thompson*) and Neuroscience Amsterdam, IPB-grant to *Dr. Schmaal* & *Dr. van den Heuvel*. Supported by the Japan Society for the Promotion of Science (JSPS; KAKENHI Grants No. 18K15523 to *Dr. Abe*, No. 16K19778, No. 18K07608 to *Dr. Nakamae*, No. 16K04344 to *Dr. Hirano*, and No. 26461762 to *Dr. Nakagawa*); Ontario Mental Health Foundation Research Training Fellowship to *Dr. Ameis*; the Fundação de Amparo à Pesquisa do Estado de São Paulo (FAPESP, São Paulo Research Foundation; Grant No. 2011/21357–9; the EU FP7 project TACTICS (Grant No. 278948 to *Dr. Buitelaar*); the National Natural Science Foundation of China (No. 81560233 to *Dr. Cheng*); the International Obsessive-Compulsive Disorder Foundation (IOCDF) Research Award to *Dr. Gruner*; the Dutch Organization for Scientific Research (NWO) (grants 912–02-050, 907–00-012, 940–37-018, and 916.86.038); the Netherlands Society for Scientific Research (NWO-ZonMw VENI grant 916.86.036 to *Dr. van den Heuvel*; NWO-ZonMw AGIKO stipend 920–03-542 to *Dr. de Vries*), a NARSAD Young Investigator Award to *Dr. van den Heuvel*, and the Netherlands Brain Foundation (2010(1)-50 to *Dr. van den Heuvel*); the Federal Ministry of Education and Research of Germany (No. BMBF-01GW0724 to *Dr. Kathmann*); the Alberta Innovates Translational Health Chair in Child and Youth Mental Health and the Ontario Brain Institute funding *Dr. Arnold*; the Deutsche Forschungsgemeinschaft (DFG; Grant No.

KO 3744/7-1 to *Dr. Koch*); the Helse Vest Health Authority (No. 911754, 911880 to *Dr. Kvale*) and the Norwegian Research Council (No. HELSEFORSK 243675 to *Dr. Kvale*); the Wellcome Trust and a pump priming grant from the South London and Maudsley Trust, London, UK (Project Grant No. 064846 to *Dr. Mataix-Cols*); the Generalitat de Catalunya (AGAUR 2017 SGR 1247 to *Dr. Menchón*); the PhD-iHES program (FCT fellowship Grant No. PDE/BDE/113601/2015 to *Dr. Moreira*); the Japanese Ministry of Education, Culture, Sports, Science and Technology (Grant-in-Aid for Scientific Research (C) 22591262, 25461732, 16K10253 to *Dr. Nakao*); the Italian Ministry of Health (No. RC13-14-15-16-17-18A to *Dr. Spalletta, Dr. Piras Fabrizio, Dr. Piras Federica*); the National Center for Advancing Translational Sciences (Grant No. UL1TR000067/KL2TR00069) and the NIMH (Grant No. R33MH107589 & R01MH111794) grants to *Dr. Stern*; the SA MRC funding and the National Research Foundation of South Africa *Dr. Stein and Dr. Lochner*; the Canadian Institutes of Health Research, and British Columbia Provincial Health Services Authority funding *Dr. Stewart*; the Netherlands Organization for Scientific Research (NWO/ZonMW Vidi 917.15.318 to *Dr. van Wingen*); the Wellcome-DBT India Alliance (Grant No. 500236/Z/11/Z to *Dr. Venkatasubramanian*); the National Natural Science Foundation of China (No. 81371340) and the Shanghai Key Laboratory of Psychotic Disorders (No. 13dz2260500) to *Dr. Wang*; the Government of India grants from the Department of Science and Technology (Grants No. SR/SO/HS/0016/2011 to *Prof. Y.C. Janardhan Reddy*, and DST INSPIRE faculty grant -IFA12-LSBM-26 to *Dr. Janardhanan C. Narayanaswamy*) and from the Department of Biotechnology (Grants No. BT/PR13334/Med/30/259/2009 to *Prof. Y.C. Janardhan Reddy*, and No. BT/06/IYBA/2012 to *Dr. Janardhanan C. Narayanaswamy*); the Dana Foundation and NARSAD to *Dr. Fitzgerald*; the NIMH (Grant No. R01MH107419 and K23MH082176 to *Dr. Fitzgerald*; Grant No. R21MH101441 to *Dr. Marsh*; Grant No. R21MH093889 to *Drs. Marsh & Simpson*; Grant No. K23-MH104515 to *Dr. Baker*; Grant No. R01MH081864 to *Drs. O'Neill, Piacentini*; and Grant No. R01MH085900 to *Drs. O'Neill and Feusner*); the NIMH and the David Judah Fund at the Massachusetts General Hospital (Grant No. K23-MH092397 to *Dr. Brennan*); the Marató TV3 Foundation (Grants No. 01/2010 and 091710 to *Dr. Lazaro*); the Carlos III Health Institute (PI040829 to *Dr. Lazaro*, Grant CPII16/00048 and Project Grants PI13/01958 & PI16/00889 to *Dr. Soriano-Mas*), co-funded by FEDER funds/European Regional Development Fund (ERDF), a way to build Europe; the AGAUR (2017 SGR 881 to *Dr. Lazaro*); the Michael Smith Foundation for Health Research funding *Dr. Jaspers-Fayer and Dr. Stewart*; the Carlos III Health Institute (PI14/00419 to *Dr. Alonso*, Grant No. FI17/00294 to Ignacio Martínez-Zalacain, Project Grant No. PI16/00950 to *Dr. Menchón*); and the Japan Agency for Medical Research and Development (AMED Grant Number JP18dm0307002 to *Dr. Hirano*).

References

1. Faraone SV, Asherson P, Banaschewski T, Biederman J, Buitelaar JK, Ramos-Quiroga JA, & Franke B. (2015). Attention-deficit/hyperactivity disorder. *Nature Rev. Dis. Primers*, 1, 15020. [PubMed: 27189265]
2. Elsabbagh M, Divan G, Koh YJ, Kim YS, Kauchali S, Marcín C, ... Yasamy MT & Fombonne E. (2012). Global prevalence of autism and other pervasive developmental disorders. *Autism research*, 5(3), 160–179. [PubMed: 22495912]
3. Ruscio AM, Stein DJ, Chiu WT, & Kessler RC (2010). The epidemiology of obsessive-compulsive disorder in the National Comorbidity Survey Replication. *Molecular psychiatry*, 15(1), 53–63. [PubMed: 18725912]
4. Anholt GE, Cath DC, van Oppen P, Eikelenboom M, Smit JH, van Megen H, & van Balkom AJ (2010). Autism and ADHD symptoms in patients with OCD: are they associated with specific OC symptom dimensions or OC symptom severity?. *Journal of Autism and Developmental Disorders*, 40(5), 580–589. [PubMed: 20039111]
5. Antshel KM, Zhang-James Y, & Faraone SV (2013). The comorbidity of ADHD and autism spectrum disorder. *Expert review of neurotherapeutics*, 13(10), 1117–1128. [PubMed: 24117274]
6. Dalley JW, Everitt BJ, & Robbins TW (2011). Impulsivity, compulsivity, and top-down cognitive control. *Neuron*, 69(4), 680–694. [PubMed: 21338879]
7. van den Heuvel OA, van Wingen G, Soriano-Mas C, Alonso P, Chamberlain SR, Nakamae T, ... & Veltman DJ (2016). Brain circuitry of compulsivity. *European Neuropsychopharmacology*, 26(5), 810–827. [PubMed: 26711687]
8. Haar S, Berman S, Behrmann M, & Dinstein I. (2014). Anatomical abnormalities in autism?. *Cerebral cortex*, 26(4), 1440–1452. [PubMed: 25316335]
9. Nakao T, Radua J, Rubia K, & Mataix-Cols D. (2011). Gray matter volume abnormalities in ADHD: voxel-based meta-analysis exploring the effects of age and stimulant medication. *American Journal of Psychiatry*, 168(11), 1154–1163.

10. Shaw P, Malek M, Watson B, Greenstein D, de Rossi P, & Sharp W. (2013). Trajectories of cerebral cortical development in childhood and adolescence and adult attention-deficit/hyperactivity disorder. *Biological psychiatry*, 74(8), 599–606. [PubMed: 23726514]
11. De Wit SJ, Alonso P, Schweren L, Mataix-Cols D, Lochner C, Menchón JM, ... & Hoexter MQ (2014). Multicenter voxel-based morphometry mega-analysis of structural brain scans in obsessive-compulsive disorder. *American journal of psychiatry*, 171(3), 340–349.
12. Fouche JP, du Plessis S, Hattingh C, Roos A, Lochner C, Soriano-Mas C, ... & Jung WH (2017). Cortical thickness in obsessive-compulsive disorder: Multisite mega-analysis of 780 brain scans from six centres. *The British Journal of Psychiatry*, 210(1), 67–74. [PubMed: 27198485]
13. Van Rooij D, Anagnostou E, Arango C, Auzias G, Behrmann M, Busatto GF, ... & Dinstein I. (2018). Cortical and subcortical brain morphometry differences between patients with autism spectrum disorder and healthy individuals across the lifespan: results from the ENIGMA ASD working group. *American Journal of Psychiatry*, 175(4), 359–369.
14. Hoogman M, Bralten J, Hibar DP, Mennes M, Zwiers MP, Schweren LS, ... & deZeeuw P. (2017). Subcortical brain volume differences in participants with attention deficit hyperactivity disorder in children and adults: a cross-sectional mega-analysis. *The Lancet Psychiatry*, 4(4), 310–319. [PubMed: 28219628]
15. Hoogman et al. Brain Imaging of the cortex in ADHD: A coordinated analysis of large-scale clinical and population-based samples. *American Journal of Psychiatry*; under review
16. Boedhoe PS, Schmaal L, Abe Y, Ameis SH, Arnold PD, Batistuzzo MC, ... & Brem S (2017). Distinct subcortical volume abnormalities in pediatric and adult OCD: a worldwide meta-and mega-analysis. *American Journal of Psychiatry*, 174(1), 60–69.
17. Boedhoe PS, Schmaal L, Abe Y, Alonso P, Ameis SH, Anticevic A, ... & Bollettini I (2017). Cortical abnormalities associated with pediatric and adult obsessive-compulsive disorder: Findings from the ENIGMA Obsessive-Compulsive Disorder Working Group. *American Journal of Psychiatry*, 175(5), 453–462.
18. Brieber S, Neufang S, Bruning N, Kamp-Becker I, Remschmidt H, Herpertz-Dahlmann B, ... & Konrad K. (2007). Structural brain abnormalities in adolescents with autism spectrum disorder and patients with attention deficit/hyperactivity disorder. *Journal of Child Psychology and Psychiatry*, 48(12), 1251–1258. [PubMed: 18093031]
19. Lim L, Chantiluke K, Cubillo AI, Smith AB, Simmons A, Mehta MA, & Rubia K. (2015). Disorder-specific grey matter deficits in attention deficit hyperactivity disorder relative to autism spectrum disorder. *Psychological medicine*, 45(5), 965–976. [PubMed: 25229248]
20. Dougherty CC, Evans DW, Myers SM, Moore GJ, & Michael AM (2016). A comparison of structural brain imaging findings in autism spectrum disorder and attention-deficit hyperactivity disorder. *Neuropsychology review*, 26(1), 25–43. [PubMed: 26482248]
21. Norman LJ, Carlisi C, Lukito S, Hart H, Mataix-Cols D, Radua J, & Rubia K. (2016). Structural and functional brain abnormalities in attention-deficit/hyperactivity disorder and obsessive-compulsive disorder: a comparative meta-analysis. *JAMA psychiatry*, 73(8), 815–825. [PubMed: 27276220]
22. Carlisi CO, Norman LJ, Lukito SS, Radua J, Mataix-Cols D, & Rubia K. (2017). Comparative multimodal meta-analysis of structural and functional brain abnormalities in autism spectrum disorder and obsessive-compulsive disorder. *Biological psychiatry*, 82(2), 83–102. [PubMed: 27887721]
23. Thompson PM, Stein JL, Medland SE, Hibar DP, Vasquez AA, Renteria ME, ... & Wright MJ (2014). The ENIGMA Consortium: large-scale collaborative analyses of neuroimaging and genetic data. *Brain imaging and behavior*, 8(2), 153–182. [PubMed: 24399358]
24. Boedhoe PSW, Heymans MW, Schmaal L.... van den Heuvel OA & Twisk JWR et al (2018) An Empirical Comparison of Meta- and Mega-Analysis With Data From the ENIGMA Obsessive-Compulsive Disorder Working Group. *Front. Neuroinform.* 12, 102. [PubMed: 30670959]
25. Westlye LT, Walhovd KB, Dale AM, Bjørnerud A, Due-Tønnessen P, Engvig A, ... & Fjell AM (2010). Differentiating maturational and aging-related changes of the cerebral cortex by use of thickness and signal intensity. *Neuroimage*, 52(1), 172–185. [PubMed: 20347997]

26. Im K, Lee J-M, Lyttelton O, Kim SH, Evans AC, Kim SI, 2008. Brain size and cortical structure in the adult human brain. *Cereb. Cortex* 18 (9), 2181–2191. [PubMed: 18234686]
27. Barnes J, Ridgway GR, Bartlett J, Henley SM, Lehmann M, Hobbs N, ... & Fox NC (2010). Head size, age and gender adjustment in MRI studies: a necessary nuisance? *Neuroimage*, 53(4), 1244–1255. [PubMed: 20600995]
28. Boedhoe PS, Schmaal L, Mataix-Cols D, Jahanshad N, ENIGMA OCD Working Group, Thompson PM, ... & van den Heuvel OA (2017). Association and Causation in Brain Imaging in the Case of OCD: Response to McKay et al. *American Journal of Psychiatry*, 174(6), 597–599.
29. Shaw P, Eckstrand K, Sharp W, Blumenthal J, Lerch JP, Greenstein DEEA, ... & Rapoport JL (2007). Attention-deficit/hyperactivity disorder is characterized by a delay in cortical maturation. *Proceedings of the National Academy of Sciences*, 104(49), 19649–19654.
30. van Erp TG, Hibar DP, Rasmussen JM, Glahn DC, Pearlson GD, Andreassen OA, ... & Melle I. (2016). Subcortical brain volume abnormalities in 2028 individuals with schizophrenia and 2540 healthy controls via the ENIGMA consortium. *Molecular psychiatry*, 21(4), 547. [PubMed: 26033243]
31. Hibar DP, Westlye LT, van Erp TG, Rasmussen J, Leonardo CD, Faskowitz J, ... & Dale AM (2016). Subcortical volumetric abnormalities in bipolar disorder. *Molecular psychiatry*, 21(12), 1710. [PubMed: 26857596]
32. Kassem MS, Lagopoulos J, Stait-Gardner T, Price WS, Chohan TW, Arnold JC, ... & Bennett MR (2013). Stress-induced grey matter loss determined by MRI is primarily due to loss of dendrites and their synapses. *Molecular neurobiology*, 47(2), 645–661. [PubMed: 23138690]
33. Weisberg J, Milleville SC, Kenworthy L, Wallace GL, Gotts SJ, Beauchamp MS, & Martin A. (2012). Social perception in autism spectrum disorders: impaired category selectivity for dynamic but not static images in ventral temporal cortex. *Cerebral Cortex*, 24(1), 37–48. [PubMed: 23019245]
34. Ecker C, Ginestet C, Feng Y, Johnston P, Lombardo MV, Lai MC, ... & Williams SC (2013). Brain surface anatomy in adults with autism: the relationship between surface area, cortical thickness, and autistic symptoms. *JAMA Psychiatry*, 70(1), 59–70. [PubMed: 23404046]
35. Zielinski BA, Prigge MB, Nielsen JA, Froehlich AL, Abildskov TJ, Anderson JS, ... & Alexander AL (2014). Longitudinal changes in cortical thickness in autism and typical development. *Brain*, 137(6), 1799–1812. [PubMed: 24755274]
36. Naaijen J, de Ruiter S, Zwiers MP, Glennon JC, Durston S, Lythgoe DJ, ... & Buitelaar JK (2016). COMPULS: design of a multicenter phenotypic, cognitive, genetic, and magnetic resonance imaging study in children with compulsive syndromes. *BMC psychiatry*, 16(1), 361. [PubMed: 27782808]
37. Cubillo A, Halari R, Smith A, Taylor E, & Rubia K. (2012). A review of fronto-striatal and fronto-cortical brain abnormalities in children and adults with Attention Deficit Hyperactivity Disorder (ADHD) and new evidence for dysfunction in adults with ADHD during motivation and attention. *Cortex*, 48(2), 194–215. [PubMed: 21575934]
38. Klein M, Walters RK, Demontis D, Stein JL, Hibar DP, Adams HH, ... & Mattheisen M. (2017). Genetic markers of ADHD-related variations in intracranial volume. *bioRxiv*, 184192.
39. Amat JA, Bansal R, Whiteman R, Haggerty R, Royal J, & Peterson BS (2008). Correlates of intellectual ability with morphology of the hippocampus and amygdala in healthy adults. *Brain and Cognition*, 66(2), 105–114. [PubMed: 17651879]
40. Clarkson MJ, Cardoso MJ, Ridgway GR, Modat M, Leung KK, Rohrer JD, ... & Ourselin S. (2011). A comparison of voxel and surface based cortical thickness estimation methods. *Neuroimage*, 57(3), 856–865. [PubMed: 21640841]
41. Tardif CL, Collins DL, & Pike GB (2010). Regional impact of field strength on voxel-based morphometry results. *Human brain mapping*, 31(7), 943–957. [PubMed: 19862698]
42. Han X, Jovicich J, Salat D, van der Kouwe A, Quinn B, Czanner S, ... & Maguire P. (2006). Reliability of MRI-derived measurements of human cerebral cortical thickness: the effects of field strength, scanner upgrade and manufacturer. *Neuroimage*, 32(1), 180–194 [PubMed: 16651008]

43. Nieuwenhuis S, Forstmann BU, & Wagenmakers EJ (2011). Erroneous analyses of interactions in neuroscience: a problem of significance. *Nature neuroscience*, 14(9), 1105–1107. [PubMed: 21878926]

Author Manuscript

Author Manuscript

Author Manuscript

Author Manuscript

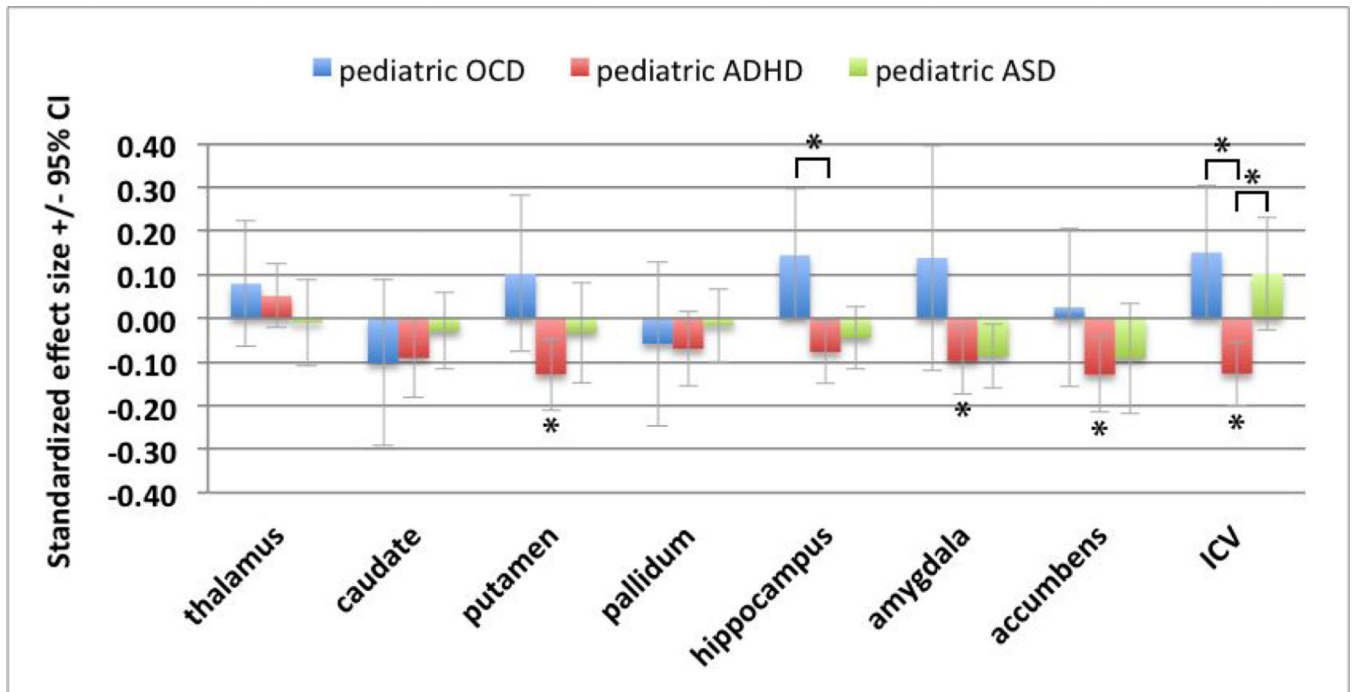


Figure 1a:

Subcortical volume differences in children with ADHD, ASD, or OCD compared to controls

Significant results (FDR $q < 0.05$) are indicated by an asterisk (Supplementary Table S5).

For Effect size values across disorders see Supplementary Table S14. Abbreviations:

Confidence Interval (CI); Intracranial volume (ICV)

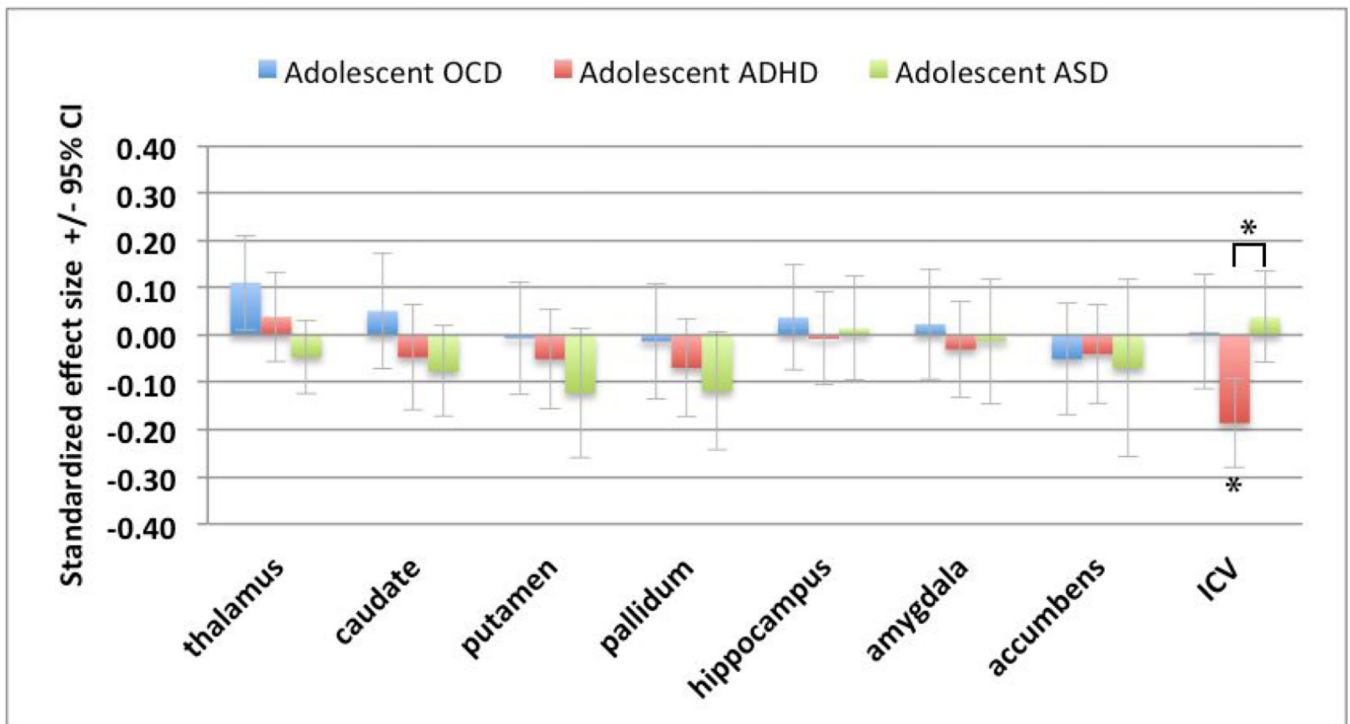


Figure 1b:

Subcortical volume differences in adolescents with ADHD, ASD, or OCD compared to controls

Significant results (FDR $q < 0.05$) are indicated by an asterisk (Supplementary Table S7).

For Effect size values across disorders see Supplementary Table S17. Abbreviations: Confidence Interval (CI); Intracranial volume (ICV)

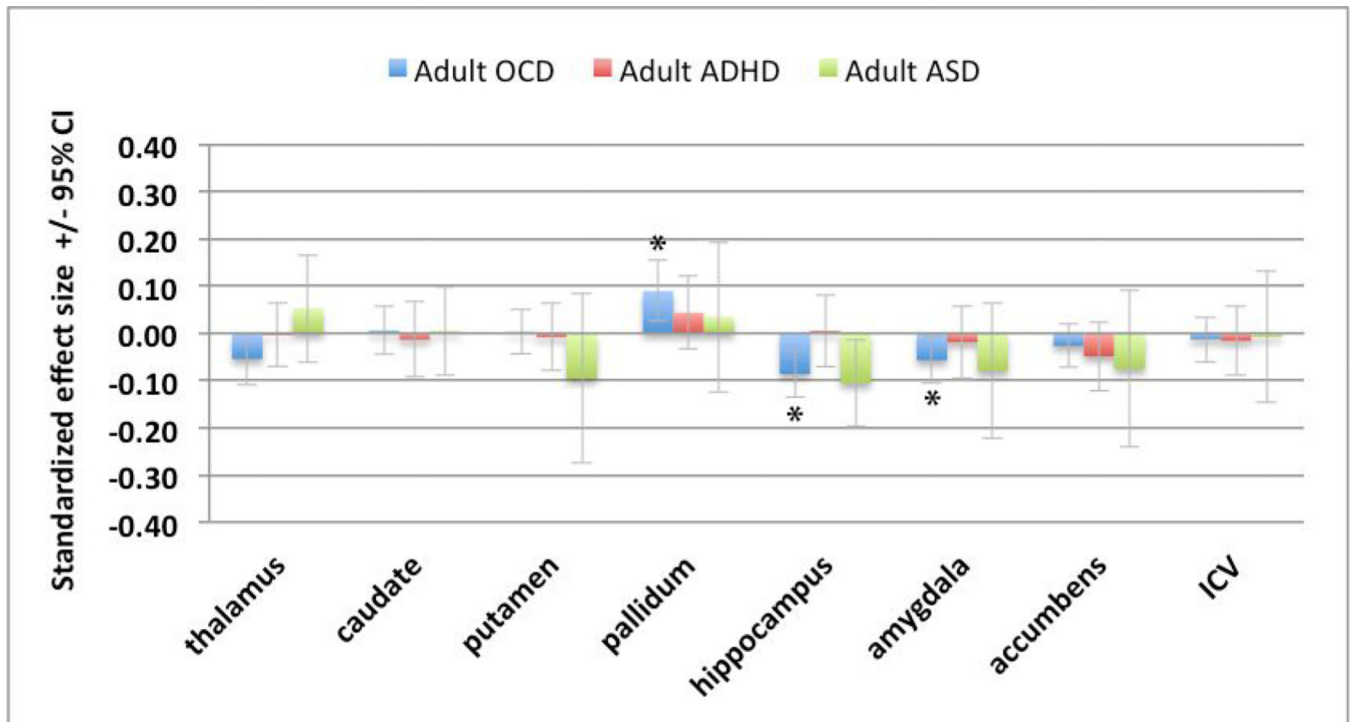
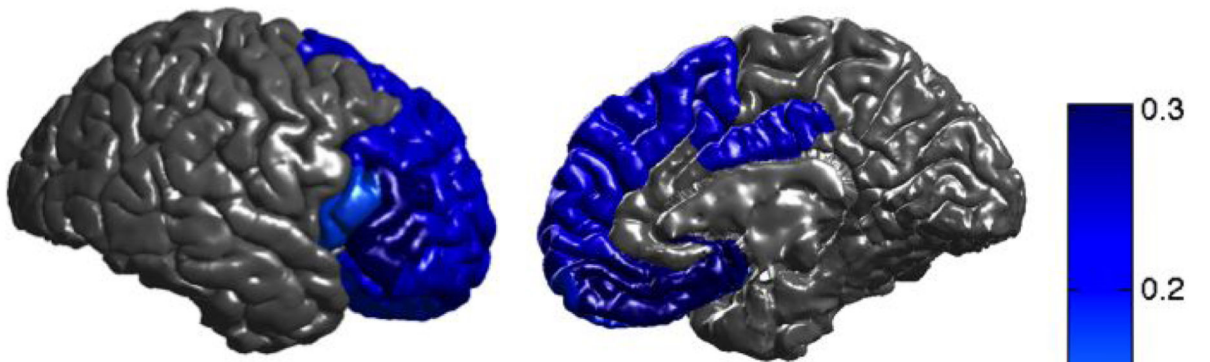


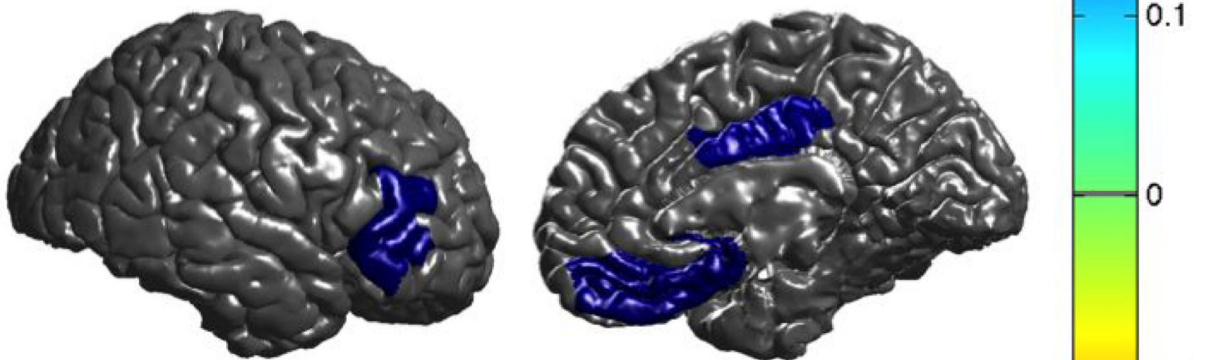
Figure 1c:

Subcortical volume differences in adults with ADHD, ASD, or OCD compared to controls. Significant results (FDR $q < 0.05$) are indicated by an asterisk (Supplementary Table S10). For Effect size values across disorders see Supplementary Table S20. Abbreviations: Confidence Interval (CI); Intracranial volume (ICV)

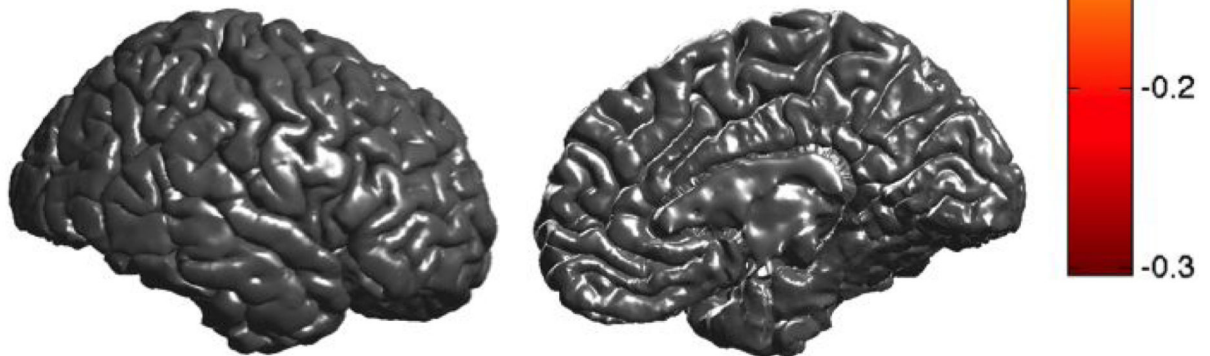
ASD vs OCD



ASD vs ADHD



ADHD vs OCD

**Figure 2:**

Thicker cortices of several frontal regions in adults with ASD compared to those with OCD or ADHD

Regions that showed a significant (FDR $q = 0.05$) difference in cortical thickness among adults with ASD, ADHD or OCD. Positive effect sizes d (blue) indicate thicker cortices in adults with ASD patients compared to those with ADHD or OCD.

Table 1. demographics, clinical characteristics, age, sex, and numbers breakdown separately for pediatric patient groups and control subjects

children	OCD (N total patients=140)			ADHD (N total patients=709)			ASD (N total patients=723)			controls (N total controls= 1590)		
	number of sites included (14)	mean	sd	number of sites included (26)	mean	sd	number of sites included (35)	mean	sd	number of sites included (69)	mean	sd
age	140	10.28	1.22	709	9.41	1.33	723	8.64	2.46	1590	9.35	1.72
IQ	70	108.75	16.50	648	106.09	15.20	526	100.02	21.49	1302	111.23	15.37
	data available for N patients	N	%	data available for N patients	N	%	data available for N patients	N	%	data available for N subjects	N	%
male	140	76	54.29	709	530	74.75	723	588	81.33	1590	997	62.70
medication	140	38	27.14	438	126	28.77	413	97	23.49			
comorbid	-	-	-	408	0	0.00	73	0	0.00			
ADHD	126	14	11.11	-	-	-	73	8	10.96			
ASD	126	3	2.38	271	0	0.00	-	-	-			
TD	119	12	10.08	240	1	0.42	73	0	0.00			
Anx	129	41	31.78	408	21	5.15	73	4	5.48			
Dep	129	7	5.43	404	0	0.00	73	1	1.37			

Abbreviations: sd= standard deviation; TD = Tourette's Disorder; Anx = Anxiety Disorder; Dep= Major Depressive Disorder

demographics, clinical characteristics, age, sex, and numbers breakdown separately for adolescent patient groups and control subjects

Table 2.

adolescents	OCD (N total patients=359)			ADHD (N total patients=633)			ASD (N total patients=565)			controls (N total controls= 1368)		
	number of sites included (16)		sd	number of sites included (27)		sd	number of sites included (39)		sd	number of sites included (79)		sd
	data available for N patients	mean		data available for N patients	mean		data available for N patients	mean		data available for N subjects	mean	
age	359	14.91	1.72	633	14.00	1.65	565	14.40	1.66	1368	14.37	1.71
IQ	136	106.75	14.31	608	102.41	14.63	467	103.02	18.26	1085	110.07	12.79
	data available for N patients	N	%	data available for N patients	N	%	data available for N patients	N	%	data available for N subjects	N	%
male	359	195	54.32	633	514	81.20	565	492	87.08	1368	937	68.49
medication	357	172	48.18	487	212	43.53	227	74	32.60			
comorbid	-	-	-	452	0	0.00	68	0	0.00			
ADHD	314	27	8.60	-	-	-	68	13	19.12			
ASD	299	10	3.34	316	7	2.22	-	-	-			
TD	314	17	5.41	272	1	0.37	68	1	1.47			
Anx	316	109	34.49	452	8	1.77	68	3	4.41			
Dep	317	24	7.57	452	5	1.11	68	2	2.94			

Abbreviations: sd= standard deviation; TD = Tourette's Disorder; Anx = Anxiety Disorder; Dep= Major Depressive Disorder

demographics, clinical characteristics, age, sex, and numbers breakdown separately for adult patient groups and control subjects

Table 3.

adults	OCD (N total patients=1824)			ADHD (N total patients=929)			ASD (N total patients=489)			controls (N total controls= 2869)		
	number of sites included (33)		sd	number of sites included (28)		sd	number of sites included (36)		sd	number of sites included (91)		sd
	data available for N patients	mean		data available for N patients	mean		data available for N patients	mean		data available for N subjects	mean	
age	1824	31.69	9.66	929	29.82	10.19	489	26.03	9.00	2869	29.74	9.88
IQ	408	105.99	13.22	765	106.91	14.52	439	108.96	16.01	1449	112.20	13.36
male	1824	923	50.60	929	622	66.95	489	432	88.34	2869	1634	56.95
medication	1803	829	45.98	650	119	18.31	226	46	20.35			
comorbid	-	-	-	787	3	0.38	116	3	2.59			
ADHD	1142	51	4.47	-	-	-	116	3	2.59			
ASD	1079	1	0.09	343	0	0.00	-	-	-			
TD	1182	22	1.86	389	4	1.03	116	0	0.00			
Anx	1491	276	18.51	768	13	1.69	116	0	0.00			
Dep	1513	193	12.76	731	7	0.96	116	6	5.17			

Abbreviations: sd= standard deviation; TD = Tourette's Disorder; Anx = Anxiety Disorder; Dep= Major Depressive Disorder