

UC Berkeley

UC Berkeley Previously Published Works

Title

A hybrid absorption-adsorption method to efficiently capture carbon

Permalink

<https://escholarship.org/uc/item/7w92q401>

Journal

Nature Communications, 5(1)

ISSN

2041-1723

Authors

Liu, Huang

Liu, Bei

Lin, Li-Chiang

et al.

Publication Date

2014

DOI

10.1038/ncomms6147

Peer reviewed

ARTICLE

Received 11 Jul 2014 | Accepted 5 Sep 2014 | Published 9 Oct 2014

DOI: 10.1038/ncomms6147

OPEN

A hybrid absorption-adsorption method to efficiently capture carbon

Huang Liu^{1,*}, Bei Liu^{1,*}, Li-Chiang Lin^{2,*}, Guangjin Chen¹, Yuqing Wu¹, Jin Wang¹, Xueting Gao¹, Yining Lv¹, Yong Pan¹, Xiaoxin Zhang¹, Xianren Zhang³, Lanying Yang¹, Changyu Sun¹, Berend Smit^{2,4} & Wenchuan Wang³

Removal of carbon dioxide is an essential step in many energy-related processes. Here we report a novel slurry concept that combines specific advantages of metal-organic frameworks, ion liquids, amines and membranes by suspending zeolitic imidazolate framework-8 in glycol-2-methylimidazole solution. We show that this approach may give a more efficient technology to capture carbon dioxide compared to conventional technologies. The carbon dioxide sorption capacity of our slurry reaches 1.25 mol l^{-1} at 1 bar and the selectivity of carbon dioxide/hydrogen, carbon dioxide/nitrogen and carbon dioxide/methane achieves 951, 394 and 144, respectively. We demonstrate that the slurry can efficiently remove carbon dioxide from gas mixtures at normal pressure/temperature through breakthrough experiments. Most importantly, the sorption enthalpy is only -29 kJ mol^{-1} , indicating that significantly less energy is required for sorbent regeneration. In addition, from a technological point of view, unlike solid adsorbents slurries can flow and be pumped. This allows us to use a continuous separation process with heat integration.

¹State Key Laboratory of Heavy Oil Processing, China University of Petroleum, Beijing 102249, P. R. China. ²Department of Chemical and Biomolecular Engineering, University of California, Berkeley, California 94720, USA. ³State Key Laboratory of Organic-Inorganic Composites, Beijing University of Chemical Technology, Beijing 100029, P. R. China. ⁴Laboratory of Molecular Simulation, Institut des Sciences et Ingénierie Chimiques, Ecole Polytechnique Fédérale de Lausanne (EPFL), CH-1015 Lausanne, Switzerland. * These authors contributed equally to this work. Correspondence and requests for materials should be addressed to G.C. (email: gjchen@cup.edu.cn) or to C.S. (email: cysun@cup.edu.cn) or to B.S. (email: berend-smit@berkeley.edu).

Reduction of CO₂ emission is directly influenced by the efficiency with which we are able to capture carbon from flue gas and other gas mixtures related to energy generation, such as biogas, integrated gasification combined cycle gas, syngas, shift gas produced from steam reforming of natural gas or coal and natural gas^{1–4}. Motivated by the staggering energy costs associated with these gas separations, finding the optimal material for a given separation has become a very active area of modern chemistry^{5–7}. In particular, metal-organic frameworks (MOFs)⁸, a new class of crystalline nanoporous materials, are regarded as promising candidates for CO₂ separations. MOFs are three-dimensional networks of metal clusters that are connected with organic linkers; by changing the metal and/or linker we can synthesize millions of different materials. Moreover, one can use this tunability to synthesize a material that has exactly the right pore volume, surface area and selectivity to efficiently separate CO₂ (refs 9–11). The enthusiasm of the scientific community about MOFs and other nanoporous materials as solid adsorbents, however, does not yet resonate in the process engineering community¹². To understand why not, consider a simple solid-adsorption separation process for carbon capture from flue gas. The first step involves an adsorber, containing the nanoporous material, which selectively adsorbs CO₂ from the flue gas. Once the adsorber is saturated, regeneration is required, which is typically done by supplying heat (temperature swing adsorption) or applying vacuum (pressure swing adsorption) to the adsorbent. This process needs at least two columns, which alternate between the adsorption and the regeneration mode. Liquid absorption uses a similar process, replacing the nanoporous material with, for example, an amine solution. If we now compare one of the most promising MOFs with commercially available amine solutions, the energy required to regenerate the amine solutions is about one order of magnitude larger than the energy required to regenerate this MOF^{4,13}. This is because in amine solutions, the CO₂ is so strongly bound that one needs to boil the amine solution to reverse the chemical bonding; as the amine solution contains 70% water, most of this energy is actually used for boiling water. Nevertheless, liquid absorption is the current state-of-the-art process for carbon capture and, surprisingly, solid adsorption is not considered as such a promising alternative. The fact is due to two significant advantages of the use of liquids. First, the liquid phase allows us to use advanced heat integrations to recover a large fraction of the heat. In solid adsorption by contrast, efficient heat integration is very difficult. Without heat recovery, the energy efficiency of a solid-adsorption process will be low. Second, pumping allows liquid absorption to be carried

out in a continuous process, whereas the solid adsorbent is typically used in a less efficient batch process. To take full advantage of the exciting developments in the field of MOFs, it is essential to remove these intrinsic difficulties related to a solid-adsorbent process.

The approach we develop in this work is based on the idea that we can make slurries by suspending solid adsorbents in a liquid adsorbent. From a process engineering point of view, slurries are very similar to liquids. Hence, with slurries we can develop a continuous process and use heat integration. For conventional adsorbents, slurries would be a terrible idea, as the liquid would fill the pores. The beauty of MOFs is, however, that we can use their tunability to select a material with pores that are sufficiently small to prevent liquid-adsorbent molecules from entering the materials, but sufficiently large for the gas molecules to be adsorbed. A carefully chosen adsorbent/adsorbent combination may lead to a significantly enhanced separation performance, which is denoted as the absorption-adsorption system.

Results

Separation with ZIF-8/glycol slurry. As a proof of concept, we first studied slurries of ZIF-8 (zeolitic imidazolate framework-8) suspended in liquid glycol (see Fig. 1). ZIFs are a sub-class of MOFs¹⁴, and generally possess excellent solution, chemical and thermal stability^{15–17}. ZIF-8 has narrow six-membered ring pore windows (3.4 Å), which are smaller than the kinetic diameter of glycol molecules (4.5 Å)¹⁸, and hence glycol is unlikely to influence the adsorption capacity of CO₂ in suspended ZIF-8. To demonstrate that our ZIF-8/glycol slurry can separate different CO₂ mixtures, we performed adsorption measurements on different CO₂ gas mixtures (that is, CO₂ with CH₄, N₂ or H₂, see Supplementary Tables 1–5). Figure 2 shows the selectivity as a function of pressure for these three mixtures (that is, up to ~745 for CO₂/H₂, ~286 for CO₂/N₂ and ~37 for CO₂/CH₄), which are sufficiently large for an effective separation. No remarkable loss of separation ability was observed after several times of cycling use of the slurry (Supplementary Table 2), where the slurry was regenerated by applying vacuum. Further characterization of the solid ZIF-8, recovered from the slurry after these cycles showed that the ZIF-8 structure remained intact (see scanning electron microscopy images, X-ray diffraction (XRD) patterns, Fourier transform infrared spectra, Fourier transform Raman spectra and energy dispersive X-ray spectroscopy patterns in Supplementary Figs 1–5). In addition to glycol, other liquids such as ethanol, cyclohexane, normal hexane, methylbenzene, tetrachloromethane and triethylene glycol have been tested to form slurries with ZIF-8 to separate a CO₂/N₂ gas mixture (Supplementary Table 6). It was found that only triethylene glycol is effective with a selectivity higher than 50. Compared with triethylene glycol, the other studied liquids consist of smaller molecules that can enter into ZIF-8 frameworks. Note that, to provide a reference for showing the superiority of the slurry approach proposed in this work, absorption separation using pure glycol or water for the CO₂/N₂ and CO₂/CH₄ gas mixtures (Supplementary Table 7) and adsorption separation using solid ZIF-8 for the CO₂/N₂, CO₂/H₂ and CO₂/CH₄ gas mixtures (Fig. 2, Supplementary Tables 8–10) were also performed.

Separation with ZIF-8/glycol-2-methylimidazole slurry.

Though we have obtained promising CO₂ selectivities, Fig. 3a indicates that, as in most application the partial CO₂ pressure is low, the solubility coefficient of ZIF-8/glycol slurry at these conditions is too low for practical applications. We further tuned the adsorbent by adding 2-methylimidazole (mIm) to the glycol.

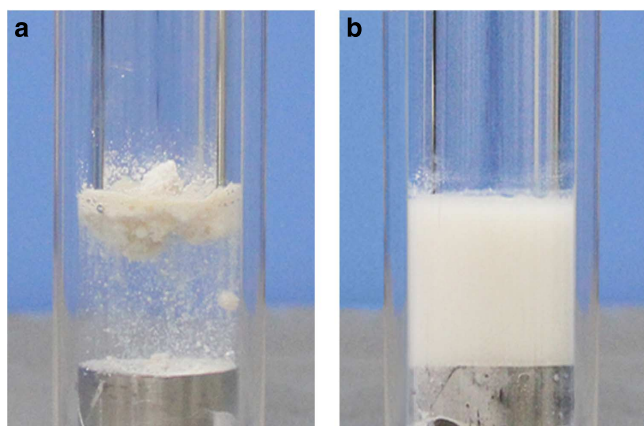


Figure 1 | Formation of ZIF-8/glycol slurries. Photographs of experimentally prepared slurries with solid ZIF-8 suspended in liquid glycol: (a) before mixing, (b) after mixing.

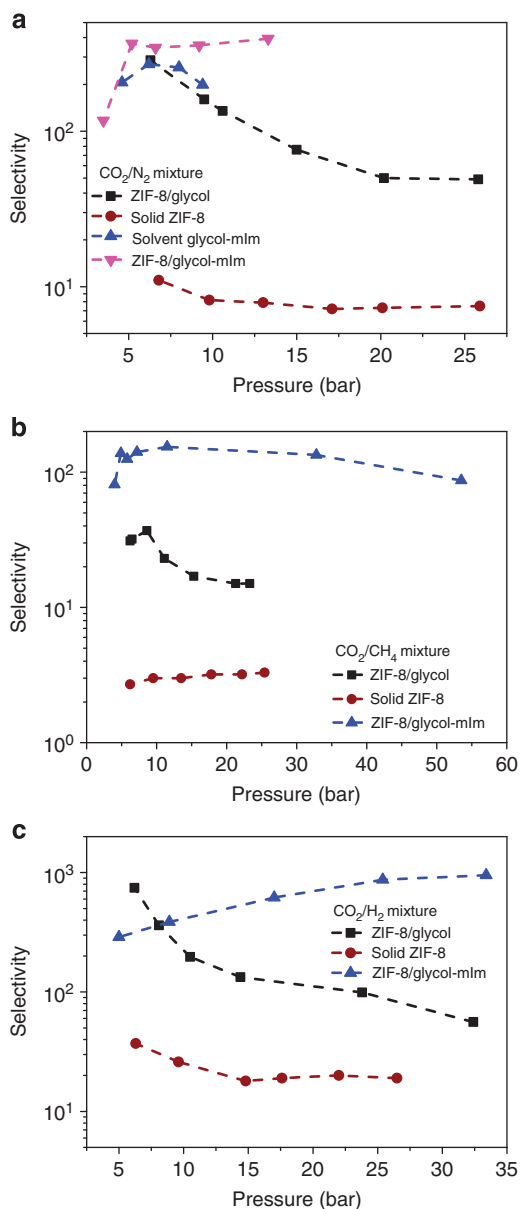


Figure 2 | Separation performance of different media. This figure shows the selectivity of CO₂ over (a) N₂, (b) CH₄ and (c) H₂ as a function of pressure in the solid ZIF-8, ZIF-8/glycol slurry at 293.15 K and in liquid glycol-mlm, ZIF-8/glycol-mlm slurry at 303.15 K.

The solubility of CO₂ in glycol-mlm (3:2) solution is 0.64 mol l⁻¹ at 303.15 K and 1 bar (see Fig. 3a) and the selectivity of CO₂ over N₂ is higher than 200 (Supplementary Table 11). The CO₂ absorption enthalpy in glycol-mlm solution is only about -34 kJ mol⁻¹ at 303.15 K (Fig. 3b), which can lead to a much lower regeneration cost compared with many of the aqueous alkanolamines (around -100 kJ mol⁻¹)¹² and ion liquids¹⁹.

For the ZIF-8/glycol-mlm slurry system, we now obtain a solubility coefficient, S_o , in (ZIF-8 15 wt% + mlm 34 wt% + glycol 51 wt%) of 1.63 mol l⁻¹ per bar (Fig. 3a, Supplementary Fig. 6 and Supplementary Table 12). Such solubility is sufficiently high at low CO₂ partial pressures to ensure a good sorption capacity at these conditions of practical interest. Although this solubility is still slightly smaller than that in MEA²⁰ and MDEA²¹ solutions that are used in the current technologies, it is much higher than some promising ion liquids for CO₂ capture: about 33 times higher than that in ion liquid [p₅mim][bFAP] (0.048 mol l⁻¹ per

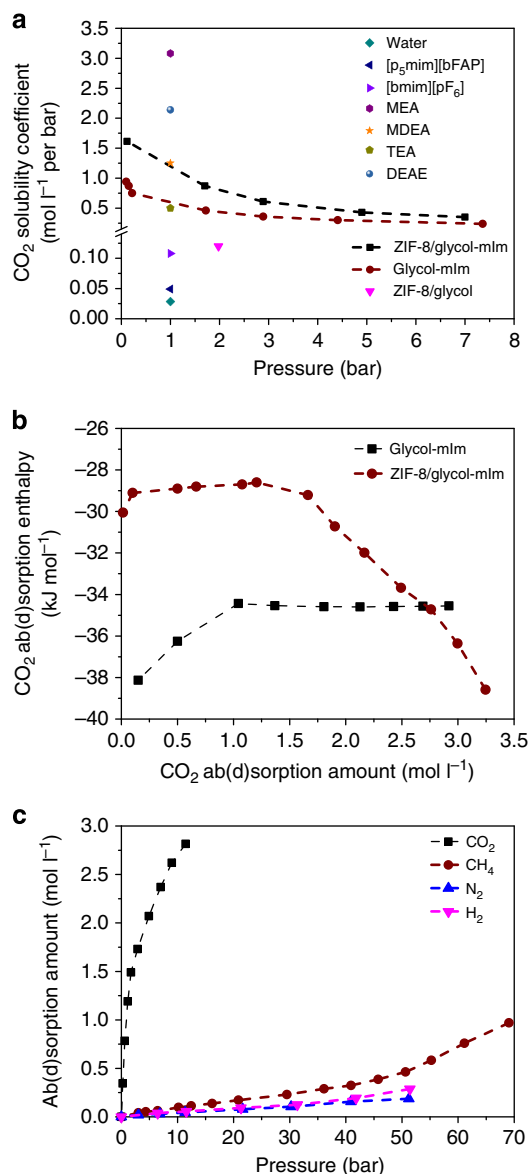


Figure 3 | Ab(d)sorption solubility and enthalpies. (a) The comparison of CO₂ solubility coefficients in ZIF-8/glycol-mlm slurry at 303.15 K with that in ZIF-8/glycol at 293.15 K and that reported in the literature ((MEA (mass fraction 30%), MDEA (mass fraction 30%), TEA (mass fraction 30%), DEAE (mass fraction 30%)) at 313.15 K, ([p₅mim][bFAP], [bmim][PF₆]) at 298.15 K)^{4,20-23}, (b) sorption enthalpies of CO₂ in glycol-mlm liquid and ZIF-8/glycol-mlm slurry at 303.15 K (c) isotherms of CO₂, CH₄, N₂ and H₂ at 303.15 K in ZIF-8/glycol-mlm slurry.

bar at 298.15 K)⁴ and about 15 times higher than that in ion liquid [bmim][PF₆] (~0.108 mol l⁻¹ per bar at 298.15 K)²². We anticipate that the solubility might further increase with higher ZIF-8 fraction (indicated by Supplementary Table 13). Furthermore, the CO₂ absorption-adsorption enthalpy in the slurry is only about -29 kJ mol⁻¹ (see Fig. 3b, which was obtained from Supplementary Fig. 7). Compared with the pure glycol-mlm liquid, the prepared slurry has an enhanced CO₂ solubility with a reduced energy requirement for CO₂ desorption. One can expect that an efficient CO₂ capture process at lower energy cost can be achieved by using this advanced slurry in this regard.

Another important result is that the selectivity of the ZIF-8/glycol-mlm slurry is significantly higher than the selectivities

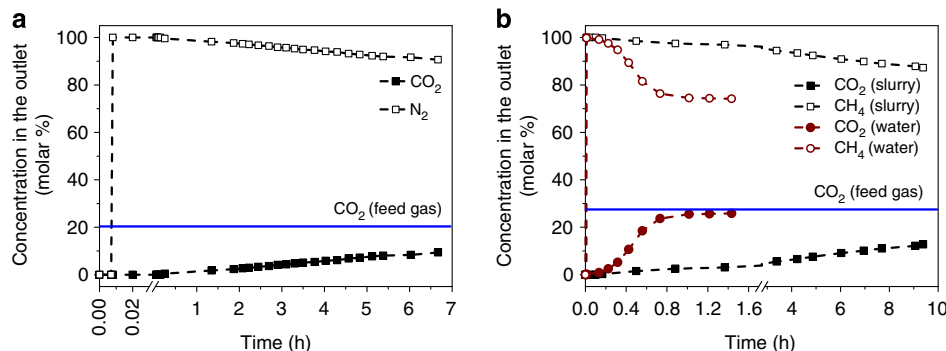


Figure 4 | Breakthrough experiment. (a) Bubble column breakthrough experiment for a CO_2/N_2 gas mixture ($z_1 = 0.2065$) (303.15 K, 1 bar) carried out in ZIF-8/glycol-mIm slurry, (b) Column breakthrough experiments for a CO_2/CH_4 gas mixture ($z_1 = 0.276$) (303.15 K, 1 bar) carried out in both ZIF-8/glycol-mIm slurry and pure water. The x axis is the time of the breakthrough experiment, the left y axis represents the concentration of gas components in outlet gas.

observed in both ZIF-8/glycol slurry and glycol-mIm solution (see Fig. 2, Supplementary Tables 12–15). The highest selectivity for CO_2/H_2 , CO_2/N_2 and CO_2/CH_4 reaches 951, 394 and 144, respectively, which are sufficiently large for an effective separation. To the best of our knowledge, these selectivities are better than those reported in MOFs^{23,24}. Moreover, as shown in Fig. 2, such a high selectivity was obtained for a large pressure range, which demonstrates that this kind of slurry is suitable for the CO_2 capture from different kinds of feed gases such as flue gas (CO_2/N_2 , ~ 1 bar), biogas (CO_2/CH_4 , ~ 1 bar), integrated gasification combined cycle gas (CO_2/H_2 , 3–5 MPa) or natural gas (CO_2/CH_4 , > 5 MPa). To further quantify the performance of the ZIF-8/glycol-mIm slurry in a separation, we measured the absorption-adsorption isotherms for single gas components (CO_2 , CH_4 , N_2 and H_2). As seen from Fig. 3c, the uptake of CO_2 in the slurry is much higher than those of other components, especially in lower pressure range. It should be noted that all measurements for both solubility and selectivity in the ZIF-8/glycol-mIm slurry shown in Figs 2 and 3 were performed using the same slurry through cycles of sorption/desorption (that is, apply vacuum for desorption). We observed no remarkable loss of the mass and separation ability of the slurry during these measurements. Similar to the ZIF-8/glycol system, further characterization of the solid ZIF-8, which were recovered from the slurry that has been reused by 33 times in 25 days, showed that the ZIF-8 structure remained intact (Supplementary Figs 1e and 2c). Supplementary Movie 1 illustrates the CO_2 capture process (fresh slurry, equilibrium slurry, gas desorption process and recovered slurry).

Column breakthrough tests. To mimic an actual separation process for capturing carbon in ZIF-8/glycol-mIm slurry, column breakthrough tests using two binary mixtures, CO_2/N_2 ($z_{\text{CO}_2} = 0.2065$) and CO_2/CH_4 ($z_{\text{CO}_2} = 0.276$), at 303.15 K were performed in a stainless bubbling column (Supplementary Fig. 8). For the CO_2/N_2 ($z_{\text{CO}_2} = 0.2065$) mixture, N_2 breakthrough occurred within 1 min, whereas CO_2 breakthrough occurred after about 17 min for CO_2/N_2 (Fig. 4a and Supplementary Table 16). After the breakthrough of CO_2 , notably, the concentration of CO_2 in the outlet gas still kept low for a long time; even after 6.7 h, the concentration of CO_2 in the outlet gas was still less than half of the CO_2 concentration in the feed gas. Similar results were obtained for CO_2/CH_4 (Fig. 4b and Supplementary Table 17). It should be noted that the slurry used for CO_2/N_2 was regenerated by purging with Helium at 318.15 K and atmospheric pressure, and then used for CO_2/CH_4 . As the height of slurry in the column is only 1.31 m, the contact time of gas bubbles with slurry is very

short. That suggests that this simple bubbling operation gives a high absorption rate as most of CO_2 in the inlet gas can be removed despite the short contacting time.

At this point, it is instructive to compare our ZIF-8/glycol-mIm slurry approach with the water-based technology that is currently used to separate CO_2 from biogas. Biogas is a gas mixture of CO_2 and CH_4 coming from the breakdown of organic matter in the absence of oxygen²⁵. To illustrate the superior performance of the absorption-adsorption approach compared with water, CO_2/CH_4 ($z_{\text{CO}_2} = 0.276$) mixture breakthrough experiment using the slurry was compared with the conventional process based on water. Figure 4b (and Supplementary Table 18) shows that CO_2 breakthrough occurred in the water-based system within 1 min, much faster than that in ZIF-8/glycol-mIm slurry (10 min). In addition, after about 1 h, the concentration of CO_2 in the outlet gas nearly equalled to that in the inlet gas (27.6 mol%) for the water-based system, while for our slurry the CO_2 concentration was only 3.04 mol%, and it increased to only 12.73 mol% after 9.4 h.

Discussion

A better understanding of the slurry system can play an important role in further improving the proposed slurry approach. It is interesting to compare selectivities in the slurry with those in the pure solid. Let us first, take a purely thermodynamic look and assume that gases in the three phases are in equilibrium. At equilibrium, there is equal temperature and equal chemical potentials of each of the components in the gas, liquid and solid phases. If we further assume that the liquid adsorbent and solid adsorbent in the slurry do not influence each other, the expected selectivity of a particular mixture will be the weighted average of the selectivities in the (pure) liquid adsorbent or (pure) solid adsorbent²⁶. Surprisingly, Fig. 5a shows that the selectivity of the slurry phase for all mixtures are significantly higher than the selectivity observed in the pure solid ZIF-8 phase, the pure liquid phase as well as the weighted average value of them.

To explain these observations, we have plotted in Fig. 5b the pure component isotherms inside the pure solid ZIF-8 and the ZIF-8 suspended in the slurry phase. These isotherms show that the adsorption of CO_2 in the solid ZIF-8 suspended in a slurry is similar to adsorption observed in pure solid ZIF-8, but the corresponding adsorption of CH_4 , N_2 and H_2 is significantly lower. From the Henry constants of these gases in glycol at 293.15 K (Supplementary Table 19), we see that, compared with CO_2 , the solubility of the other gases is much lower. In the slurry, all gases that enter the solid phase need to first pass through the

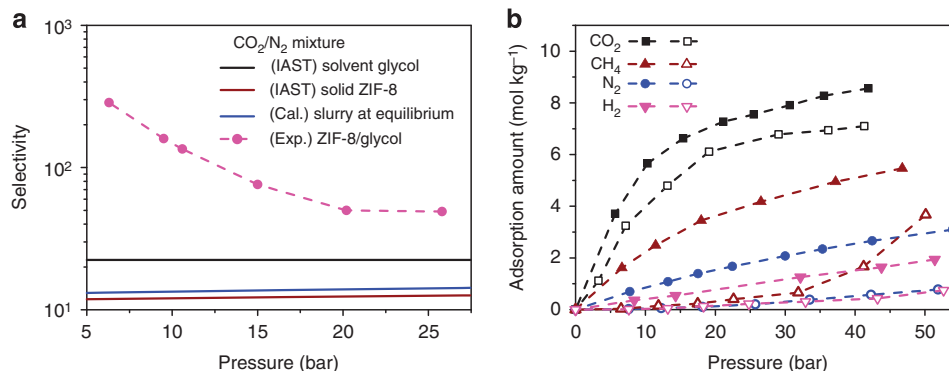


Figure 5 | Enhanced selectivity in ZIF-8/glycol slurries. (a) The experimentally measured CO₂/N₂ selectivity at 293.15 K in ZIF-8/glycol slurries (solid circles). For comparison, we have calculated the expected selectivities in the pure solid ZIF-8 phase (black lines), the pure liquid glycol phase (red lines) and the corresponding weighted average (blue lines). In these calculations, we used the ideal adsorbed solution theory (IAST)²⁶ to predict the mixture adsorption isotherm from the experimental single-component adsorption isotherms. For these calculations, we used 15% CO₂ concentration in gas phase and a mass fraction of ZIF-8 equals to 0.152 in liquid glycol for the weighted average, (b) adsorption isotherms of CO₂, CH₄, N₂ and H₂ at 293.15 K in pure solid ZIF-8 (closed symbols) and the ZIF-8 suspended in ZIF-8/glycol slurry (open symbols).

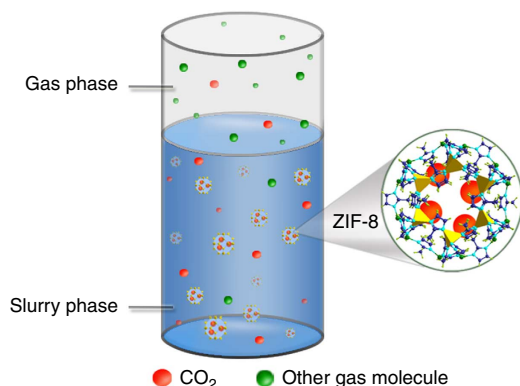


Figure 6 | Hybrid absorption-adsorption process. Schematic of the hybrid absorption-adsorption separation process for CO₂ gas mixtures in the slurry formed by ZIF-8 suspended in glycol solution.

liquid film formed by glycol molecules surrounding solid particle. Therefore the low solubilities of CH₄, N₂ and H₂ create significant mass-transfer limitations. The flux of these molecules is so low that on the relevant timescale the adsorption of these gases in ZIF-8 is far less than one can expect from equilibrium consideration and hence the selectivity in the slurry at low pressures is enhanced. Or stated differently, the liquid absorbent functions as a semipermeable membrane for which the permeability of those components other than CO₂ is so low that, on the timescale of the separation, these components never reach the equilibration loading in the ZIF-8 suspended in the absorbent. A schematic diagram of the system can be seen in Fig. 6. If we increase the pressure (Fig. 2), we observe a decrease in the selectivity. These observations are consistent with an increase of the gas concentration in the liquid phase. On the other hand, if we decrease the temperature we see a further increase in selectivity (Supplementary Table 3). When we used glycol-mIm solution instead of pure glycol as solvent, we observed higher selectivity (Fig. 2a–c) as the solubility of CO₂ in the glycol-mIm solution is much higher than that in pure glycol. At this point, it is instructive to point out that mIm is the single ligand used for synthesizing ZIF-8 and usually becomes the primary impurity of the product. Such an impurity has been shown to impose a seriously negative effect on the adsorption ability of solid ZIF-8

(ref. 27). However, as we have seen from this study, it has strong positive effect when ZIF-8 is used in slurry state. The lessened demand of product purity makes the production of ZIF-8 much less expensive, because the removal of surplus mIm by vapourizing the product requires high cost of energy.

To interpret the high CO₂ absorbing ability of the glycol-mIm solution, we propose a mechanism as illustrated in Supplementary Fig. 9. We suggest that there is a quasi-chemisorptive formation of rather unstable N–C bonded carbamate species between CO₂ and mIm. The rather unstable carbamate leads to a smaller CO₂ absorption enthalpy in glycol-mIm solution, as it is usually much larger in typical chemical absorption¹² or chemical adsorption²⁸ processes. In aqueous amine, carbamate can further react with water and subsequently lead to quite stable carbonate species²⁹. In the glycol-mIm solution, however, the carbamate species cannot further react with glycol. The mechanism is indirectly supported by experimental observations that the presence of CO₂ can obviously increase the quantity of mIm dissolved in glycol. It should be noted that other researchers also proposed a similar mechanism for the absorption of CO₂ in ion liquids that have function groups of –NH or –NH₂ (refs 30,31). In addition, there might be a structural interplay between glycol and mIm, which effectively lower the absorption enthalpy. A more detailed investigation, however, is required to validate the proposed mechanism and to better understand the fundamental physics/chemistry behind the system. In particular, as a future work, experimental characterizations, start-of-the-art quantum mechanical calculations and molecular simulations will be carried out to study the pure solvent and slurry systems in detail.

Three important insights emerge from this work. The unique properties of MOFs allow us to develop a slurry-based process to mitigate the main difficulties in the conventional solid-adsorption processes. As the slurry can be pumped, we can carry out a process very similar to liquid absorption. Second, the absorbent-adsorbent combination gives a surprisingly extra dimension for optimizing the design of a separation. The absorbent can act as a semipermeable membrane, preventing equilibration of one of the components and hence enhancing the selectivity of the separation. Finally, the single ligand mIm used in ZIF-8 synthesis (that is, also the main impurity of ZIF-8) could substantially increase the carbon capture capacity of the MOF/solvent-ligand slurry. It suggests a lower requirement on the MOF purities as well as a reduced cost in their production while using the slurry approach.

In fact, in our example, we have chosen ZIF-8 that has a very modest selectivity towards CO₂, yet in the slurry shows excellent separation performance because of this enhancement of the selectivity caused by the absorbent and mIm that is a general ligand in the synthesis of MOFs and ion liquids, yet in the slurry significantly increases the slurry's carbon capture and separation efficiency. All of the above suggests that this work opens up many exciting possibilities to further optimize CO₂ removal process by combining the specific advantages of MOFs, ion liquids, amines and membranes.

Methods

Materials. Materials used in this work include ZIF-8, mIm, glycol, ethanol, *n*-hexane, cyclohexane, methylbenzene, tetrachloromethane, triethylene glycol, water and feed gases. Among them, both ZIF-8 and mIm were purchased from Sigma-Aldrich. The scanning electron microscopy images (Supplementary Fig. 1a) and XRD patterns of the purchased ZIF-8 sample (Supplementary Fig. 2a) are in good agreement with the ones reported in the literature³². Glycol, ethanol, *n*-hexane, cyclohexane, methylbenzene, tetrachloromethane and triethylene glycol were purchased from Beijing Chemical Reagents Company, China. Analytical grade carbon dioxide (99.99%), nitrogen (99.99%), methane (99.99%) and hydrogen (99.999%) were purchased from Beijing AP Beifen Gas Industry Company, China. The synthetic gases CO₂/N₂, CO₂/H₂ and CO₂/CH₄ were prepared in our own laboratory. A Hewlett-Packard gas chromatograph (HP 7890) was used to analyze the composition of the prepared gases.

Ab(d)sorption measurements. All the ab(d)sorption measurement experiments were performed using the experimental apparatus as schematically illustrated in Supplementary Fig. 10. A detailed description of the setup can be found in our previous report³³. The key parts of the apparatus are a transparent sapphire cell and a steel-made blind cell, which are both installed in an air bath. The effective volume of the sapphire cell is 60 cm³ and that of the blind cell plus connected tubes is 112 cm³. The maximum working pressures of these two cells are designed to be 20 MPa. To directly observe samples in the cell, a lamp with luminescence source (type LG100H) is mounted on the outside of the cell. A secondary platinum resistance thermometer (type-pt100) is used as the temperature sensor. A calibrated Heise pressure gauge and differential pressure transducers are used to measure the system pressure. The uncertainties of pressure and temperature measurements are ± 0.01 MPa and ± 0.1 K, respectively. Real-time readings of the system temperature and pressure are recorded.

Before the experiments, the sapphire cell was dismantled from the apparatus, washed with distilled water and dried, then loaded with a known quantity of dry porous material. After that, a known amount of solvent was immersed into the sapphire cell slowly and evenly. Both the used dry porous material and solvent were weighed by an electrical balance with a precision of ± 0.1 mg. The mixture of porous material and liquid solvent was stirred to form a suspension mixture (that is, slurry). Subsequently, the cell was installed back into the apparatus. The system (sapphire cell + blind cell + tubes connecting two cells) was then purged through vacuuming. Enough amount of synthetic gas was injected into the blind cell, then the desired value of temperature was set through the air bath. Once both temperature and pressure of the blind cell were kept constant, the pressure of gas mixture in the blind cell was recorded as the initial pressure P_0 . The top valve of the sapphire cell was opened slowly then, letting the desired amount of synthetic gas flow into the sapphire cell from the blind cell. Afterwards, this valve was closed and the magnetic stirrer was turned on. The pressure of the residual gas mixture in the blind cell was recorded as P_1 . With the sorption of gas mixture by the slurry, the system pressure in the sapphire cell decreased gradually. During each measurement, the pressure in the sapphire cell as a function time was recorded. When the system pressure remained as a constant for at least 2 h, we considered the equilibrium of system was achieved. The equilibrium pressure of the sapphire cell was recorded as P_E . Gas mixture in the equilibrium gas phase of the sapphire cell was sampled under constant pressure by pushing the connected hand pump and analysed by a HP 7890 gas chromatograph. The volume of the slurry in the sapphire cell can be obtained by measuring the height of the equilibrium liquid phase. The inner radius of the sapphire cell is known to be 1.27 cm. In this work, the amount of each gas species absorbed and adsorbed in the measured sample was determined through mass balance as described below.

The total mole number of gas mixtures (n_t) that was injected into the sapphire cell is calculated by the following formula:

$$n_t = \frac{P_0 \times V_t}{Z_0 \times R \times T} - \frac{P_1 \times V_t}{Z_1 \times R \times T} \quad (1)$$

where T is the system temperature, P_0 is the initial pressure of the blind cell, P_1 is the equilibrium pressure of the blind cell after injecting gases into the sapphire cell, V_t is the total volume of the blind cell plus tubes connecting to it and R is the gas constant. Compressibility factors Z_0 and Z_1 were calculated using the Benedict-Webb-Rubin-Starling equation of state. The total gas amount (n_E)

in the equilibrium gas phase of the sapphire cell after absorption and adsorption equilibrium is determined by:

$$n_E = \frac{P_E \times V_g}{Z_E \times R \times T} \quad (2)$$

where P_E is the equilibrium pressure of the sapphire cell and Z_E is the compressibility factor corresponding to T , P_E and gas composition. V_g is the volume of equilibrium gas phase in the sapphire cell at the end of each experimental run. The total uptake of CO₂ (n_1) and that of N₂ (CH₄ or H₂) (n_2) in slurry are calculated as follows:

$$n_1 = n_t \times z_1 - n_E \times y_1 \quad (3)$$

$$n_2 = n_t \times z_2 - n_E \times y_2 \quad (4)$$

where z_1 and y_1 are the mole fraction of CO₂ in the synthetic gas and equilibrium gas phase, respectively; z_2 and y_2 are the mole fraction of N₂ (CH₄ or H₂) in the synthetic gas and equilibrium gas phase, respectively.

Accordingly, the apparent mole fractions of CO₂ (x_1) and N₂ (CH₄ or H₂) (x_2) in the equilibrium slurry phase can be obtained by the following formulas:

$$x_1 = \frac{n_1}{n_1 + n_2} \quad (5)$$

$$x_2 = \frac{n_2}{n_1 + n_2} \quad (6)$$

In an equilibrium-based separation process, a good indication of the CO₂ separation efficiency is the sorption selectivity³⁴. In this study, the apparent selectivity of CO₂ over other component in slurry (β) is calculated as:

$$\beta = \frac{x_1/y_1}{x_2/y_2} \quad (7)$$

To provide a reference for showing the superiority of the proposed absorption-adsorption hybrid method, the selectivity of CO₂ in solid ZIF-8 (β') is also provided, which is calculated as:

$$\beta' = \frac{x'_1/y'_1}{x'_2/y'_2} \quad (8)$$

where x'_1 and x'_2 are the mole fractions of CO₂ and N₂ (CH₄ or H₂) in adsorbed phase (ZIF-8), respectively.

The solubility coefficient (S_c) of CO₂ in sorbents, an important indication of the separation capacity, is calculated as follows:

$$S_c = \frac{n_1}{V_s \times P_E \times y_1} \quad (9)$$

where V_s is the volume of sorbents (liquid or slurry).

The apparent volumetric solubility of CO₂ in slurry (S_v) is defined as:

$$S_v = \frac{n_1}{V_s} \quad (10)$$

The initial gas-slurry volume ratio (Φ) and gas-solid adsorbent volume ratio (Φ') are defined as:

$$\Phi = \frac{n_t \times R \times T_{STP}/P_{STP}}{V_s} \quad (11)$$

$$\Phi' = \frac{n_t \times R \times T_{STP}/P_{STP}}{V'_s} \quad (12)$$

where V'_s is the volume of solid adsorbent. T_{STP} and P_{STP} are standard temperature and pressure, respectively.

The adsorption capacity of solid ZIF-8 suspended in liquid absorbents for gas components is calculated as follows:

$$n'_1 = n_1 - \frac{p_1 \times m_s}{H_1} \quad (13)$$

$$n'_2 = n_2 - \frac{p_2 \times m_s}{H_2} \quad (14)$$

where n'_1 and n'_2 are the total uptake of CO₂ and that of N₂ (CH₄ or H₂) in ZIF-8 that is suspended in slurry, H_1 and H_2 are their Henry constants in liquid absorbents, and p_1 and p_2 are the corresponding equilibrium partial pressure, respectively. m_s is the mass of absorbents. Henry constants of CO₂, CH₄, N₂ and H₂ in glycol at 293.15 K are experimentally determined and reported in Supplementary Table 19.

The mass balance method stated above has been used in our previous work^{33,35}. To validate our measurement approach, the adsorption isotherm of pure CO₂ and the gas selectivity obtained for CO₂/N₂ ($z_1 = 0.2286$) mixture in solid ZIF-8 at 303.15 K were measured using this method and compared with the literature data (Supplementary Figs 11 and 12).

Characterization. The adsorbents (solid ZIF-8) were characterized by XRD (SIMADU XRD 6000) with Cu K α radiation (0.1542 nm, 40 kV and 400 mA) at a

scanning rate of 2 °C per minute. The morphologies and energy dispersive X-ray spectroscopy measurements were obtained using a FEI Quanta 200F scanning electron microscope. Fourier transform infrared spectra were obtained using a Bruker 80v spectrometer. Fourier transform Raman spectra were obtained using a HORIBA XploRA spectrometer. The thermogravimetric measurements were carried out at a NETZSCH STA 409 PC/PG instrument.

Column breakthrough tests. The experimental setup used for dynamic breakthrough measurements is shown in Supplementary Fig. 8. The gas manifold consists of two lines, A and B, equipped with mass flow controllers. From line 'A', an inert gas (that is, helium) is injected to purge air out of the column and pipelines before experiment and to regenerate the slurry after each experiment. From line 'B', a gas mixture containing CO₂ is injected with a constant flow rate for the breakthrough experiment. Both lines 'A' and 'B' are connected to the column using a three-way valve. The stainless column is 165 cm high with a jacket that is connected to a water bath for the temperature control. The inner diameter of the column is 2 cm. About 400 ml absorbent such as ZIF-8/glycol-mIm slurry is loaded in the column. A gas distributor was fixed at the bottom of the column. The designed maximum working pressure of this apparatus is 5 MPa. The outlet gas from the top of the column is sampled and analysed by a HP 7890 gas chromatograph.

References

- Chu, S. & Majumdar, A. Opportunities and challenges for a sustainable energy future. *Nature* **488**, 294–303 (2012).
- Chu, S. Carbon capture and sequestration. *Science* **325**, 1599 (2009).
- Metz, B., Davidson, O., de Coninck, H., Loos, M. & Meyer, L. *IPCC special report on Carbon Dioxide Capture and Storage* (Intergovernmental Panel on Climate Change (IPCC), 2005).
- Wilcox, J. *Carbon Capture* (Springer, 2012).
- D'Alessandro, D. M., Smit, B. & Long, J. R. Carbon dioxide capture: prospects for new materials. *Angew. Chem. Int. Ed.* **49**, 6058–6082 (2010).
- Férey, G. Hybrid porous solids: past, present, future. *Chem. Soc. Rev.* **37**, 191–214 (2008).
- Dawson, R., Cooper, A. I. & Adams, D. J. Chemical functionalization strategies for carbon dioxide capture in microporous organic polymers. *Polym. Int.* **62**, 345–352 (2013).
- Yaghi, O. M. *et al.* Reticular synthesis and the design of new materials. *Nature* **423**, 708–714 (2003).
- Li, J.-R., Sculley, J. & Zhou, H.-C. Metal–organic frameworks for separations. *Chem. Rev.* **112**, 869–932 (2012).
- Furukawa, H., Cordova, K. E., O'Keeffe, M. & Yaghi, O. M. The chemistry and applications of metal–organic frameworks. *Science* **341**, 974 (2013).
- Sumida, K. *et al.* Carbon dioxide capture in metal–organic frameworks. *Chem. Rev.* **112**, 724–781 (2012).
- Rochelle, G. T. Amine scrubbing for CO₂ capture. *Science* **325**, 1652–1654 (2009).
- Lin, L.-C. *et al.* *In silico* screening of carbon-capture materials. *Nat. Mater.* **11**, 633–641 (2012).
- Banerjee, R. *et al.* High-throughput synthesis of zeolitic imidazolate frameworks and application to CO₂ capture. *Science* **319**, 939–943 (2008).
- Küsgens, P. *et al.* Characterization of metal–organic frameworks by water adsorption. *Micropor. Mesopor. Mat.* **120**, 325–330 (2009).
- Park, K. S. *et al.* Exceptional chemical and thermal stability of zeolitic imidazolate frameworks. *Proc. Natl Acad. Sci. USA* **103**, 10186–10191 (2006).
- Cychosz, K. A. & Matzger, A. J. Water stability of microporous coordination polymers and the adsorption of pharmaceuticals from water. *Langmuir* **26**, 17198–17202 (2010).
- Hu, C. *et al.* Development of novel mordenite-filled chitosan-poly(acrylic acid) polyelectrolyte complex membranes for pervaporation dehydration of ethylene glycol aqueous solution. *J. Membr. Sci.* **293**, 142–150 (2007).
- Wang, C. *et al.* Turning the basicity of ion liquids for equimolar CO₂ capture. *Angew. Chem. Int. Ed.* **50**, 4918–4922 (2011).
- Jou, F. Y., Mather, A. E. & Otto, F. D. The solubility of CO₂ in a 30 mass percent monoethanolamine solution. *Can. J. Chem. Eng.* **73**, 140–147 (1995).
- Chowdhury, F. A., Yamada, H., Higashii, T., Goto, K. & Onda, M. CO₂ capture by tertiary amine absorbents: A performance comparison study. *Ind. Eng. Chem. Res.* **52**, 8323–8331 (2013).
- Anthony, J. L., Maginn, E. J. & Brennecke, J. F. Solubilities and thermodynamic properties of gases in the ionic liquid 1-n-butyl-3-methylimidazolium hexafluorophosphate. *J. Phys. Chem. B* **106**, 7315–7320 (2002).
- Nugent, P. *et al.* Porous materials with optimal adsorption thermodynamics and kinetics for CO₂ separation. *Nature* **495**, 80–84 (2013).
- Babarao, R. & Jiang, J. Unprecedentedly high selective adsorption of gas mixtures in rho zeolite-like metal-organic framework: a molecular simulation study. *J. Am. Chem. Soc.* **131**, 11417–11425 (2009).
- Abatzoglou, N. & Boivin, S. A review of biogas purification processes. *Biofuel, Bioprod. Biorefin.* **3**, 42–71 (2009).
- Myers, A. L. & Prausnitz, J. M. Thermodynamics of mixed-gas adsorption. *AIChE J.* **11**, 121–127 (1965).
- Kida, K., Okita, M., Fujita, K., Tanaka, S. & Miyake, Y. Formation of high crystalline ZIF-8 in an aqueous solution. *CrystEngComm* **15**, 1794–1801 (2013).
- McDonald, T. M., D'Alessandro, D. M., Krishna, R. & Long, J. R. Enhanced carbon dioxide capture upon incorporation of N,N'-dimethylethylenediamine in the metal-organic framework CuBTTri. *Chem. Sci.* **2**, 2022–2028 (2011).
- Vaidya, P. D. & Kening, E. Y. CO₂-alkanolamine reaction kinetics: a review of recent studies. *Chem. Eng. Technol.* **30**, 1467–1474 (2007).
- Li, X. *et al.* Absorption of CO₂ by ionic liquid/polyethylene glycol mixture and the thermodynamic parameters. *Green Chem.* **10**, 879–884 (2008).
- Gutowski, K. E. & Maginn, E. J. Amine-functionalized task-specific ionic liquids: A mechanistic explanation for the dramatic increase in viscosity upon complexation with CO₂ from molecular simulation. *J. Am. Chem. Soc.* **130**, 14690–14704 (2008).
- Pan, Y., Liu, Y., Zeng, G., Zhao, L. & Lai, Z. Rapid synthesis of zeolitic imidazolate framework-8 (ZIF-8) nanocrystals in an aqueous system. *Chem. Commun.* **47**, 2071–2073 (2011).
- Liu, H. *et al.* Separation of ethylene from refinery dry gas via forming hydrate in w/o dispersion system. *Sep. Purif. Technol.* **116**, 342–350 (2013).
- Keskin, S. Atomistic simulations for adsorption, diffusion, and separation of gas mixtures in zeolite imidazolate frameworks. *J. Phys. Chem. C* **115**, 800–807 (2011).
- Mu, L. *et al.* A novel method to improve the gas storage capacity of ZIF-8. *J. Mater. Chem.* **22**, 12246–12252 (2012).

Acknowledgements

The financial supports received from the National Natural Science Foundation of China (U1162205, 21276272), the National 973 Project of China (No. 2012CB215005), the Research Fund of China University of Petroleum, Beijing (2462013YXB05) and the Program for New Century Excellent Talents from Ministry of Education (NCET-12-0968) are gratefully acknowledged. L.-C.L. and B.S. were supported as part of the Center for Gas Separations Relevant to Clean Energy Technologies, an Energy Frontier Research Center funded by the U.S. Department of Energy, Office of Science, Office of Basic Energy Sciences under Award Number DE-SC0001015.

Author contributions

G.C., C.S. and B.S. designed the experiments; B.S. and G.C. led data analysis. H.L., Y.W., J.W., X.G., Y.L., Y.P., X.X.Z. and L.Y. performed laboratory experiments. B.L., L.-C.L., H.L., G.C., B.S., C.S., X.R.Z. and W.W. performed data analysis. H.L. and L.-C.L. prepared figures and tables. G.C., B.S., B.L., L.-C.L. and C.S. developed the project concept. L.-C.L., B.L., H.L., G.C., B.S., C.S. and W.W. wrote the manuscript.

Additional information

Supplementary Information accompanies this paper at <http://www.nature.com/naturecommunications>

Competing financial interests: The authors declare no competing financial interests.

Reprints and permission information is available online at <http://www.nature.com/reprints/index.html>.

How to cite this article: Liu, H. *et al.* A hybrid absorption–adsorption method to efficiently capture carbon. *Nat. Commun.* 5:5147 doi: 10.1038/ncomms6147 (2014).



This work is licensed under a Creative Commons Attribution 4.0 International License. The images or other third party material in this article are included in the article's Creative Commons license, unless indicated otherwise in the credit line; if the material is not included under the Creative Commons license, users will need to obtain permission from the license holder to reproduce the material. To view a copy of this license, visit <http://creativecommons.org/licenses/by/4.0/>