

Lawrence Berkeley National Laboratory

LBL Publications

Title

LBL Computing Newsletter Vol 20 No 11

Permalink

<https://escholarship.org/uc/item/7wg0g0hr>

Author

Lawrence Berkeley National Laboratory

Publication Date

1983-11-01

Copyright Information

This work is made available under the terms of a Creative Commons Attribution License, available at <https://creativecommons.org/licenses/by/4.0/>

DISCLAIMER

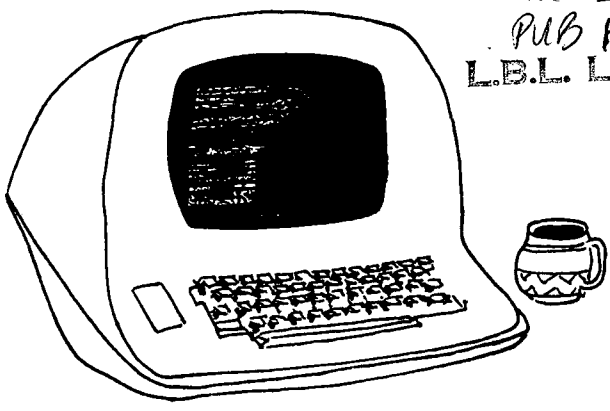
This document was prepared as an account of work sponsored by the United States Government. While this document is believed to contain correct information, neither the United States Government nor any agency thereof, nor the Regents of the University of California, nor any of their employees, makes any warranty, express or implied, or assumes any legal responsibility for the accuracy, completeness, or usefulness of any information, apparatus, product, or process disclosed, or represents that its use would not infringe privately owned rights. Reference herein to any specific commercial product, process, or service by its trade name, trademark, manufacturer, or otherwise, does not necessarily constitute or imply its endorsement, recommendation, or favoring by the United States Government or any agency thereof, or the Regents of the University of California. The views and opinions of authors expressed herein do not necessarily state or reflect those of the United States Government or any agency thereof or the Regents of the University of California.

PUB-429

RECEIVED

NOV 1 1983

PUB FILE
LBL. LIBRARY



LBL COMPUTING NEWSLETTER

Lawrence Berkeley Laboratory
University of California, Berkeley

Vol. 20, No. 11

November, 198

TABLE OF CONTENTS

- Names and Numbers to Know2
- Kerth Appointed New Division Head3
- 50B User Area Changes3
- Protection of Difficult-to-replace Files3
- Powerful Conversational Graphics Available on the IGM4
 - CUECHART4
 - TELL-A-GRAF4
 - TELL-A-PLAN4
- Carpool to SICBIG Anyone?5
- Voice Integration Discussed at ACM Dinner Meeting5
- Terminal Switch Access Names6
- News of Local User Groups7
 - STARTING UP a Local User Group7
 - November Datatrieve LUG meeting7
 - TEKTRONIX Demo at December Graphics LUG meeting7
 - RSX LUG News7
 - RT-11 LUG Meeting in November7
 - First Personal Computer LUGmeeting at LBL7
 - VAX LUG News7
- PM Schedule effective 11/1/838
- Systems Performance in September 19838
- Interactive Statistics9
- LBL DECNET Configuration10

To get on the mailing list for the LBL Computing Newsletter, contact Dortha Hines, 50B/1129, x6094.

Newsletter Closing Date is November 16, 1983.

Address all communications for the Newsletter too Maggie Morley, Editor, 50B/1245, (415) 486-5529; or to login **mam** on VAX and/or UNIX.

PUB-429

NAMES AND NUMBERS TO KNOW

From on-site, dial <xxxx> From off-site, dial (415) 486-<xxxx> From FTS line, dial 451-<xxxx>

50B/2262.....x5871,2	Central Office Number
50B/1245Ax5981	Consulting Office
50B/1245.....x5529	Computation Department Library
50B/1215.....x6211	Operations
.....x5311	Coke/Cope Operator
50B/2249.....x6205	Expediter Services
50B/2215Ax6256	Keypunch Service
50B/2249.....x6219	PSS (Program Storage System): Tape Services
50B/1245.....x6094	GSS Tape Repair Service
50B/1245.....x6094	Sticky Label Service
90 /3136x6494	Building 90 Remote Job Entry (RJE) Station
50B/4224B.....x6310	To open or change an account
50B/2262.....x5654	Guest cards, locker space, & parking permits
50B/2249Ax7444	To connect a remote terminal (RJE or interactive)
50B/2259.....x5354	Terminal or Port Repair: Electronics Maintenance
50B/2276.....x7005	UNIX System Manager
50B/2276.....x6720	VAX System Manager
50B/2262Ax5234	VAX System Manager
50B/1245.....x5529	Introductory seminars: UNIX
50B/1245.....x6094	WRITEUPS & HANDBOOK on fiche

PUB-429 11-83/1150

Prepared for the U.S. Department of Energy under Contract DE-AC03-76SF00098

KERTH APPOINTED HEAD OF NEW DIVISION

I am pleased to announce the formation of the new Computing Division and the appointment of Dr. Leroy Kerth in an interim capacity as Associate Director and Division Head, effective October 15, 1983, and extending for a two-year period.

This is a time of critical change and growth in the Lawrence Berkeley Laboratory's computing capability. Dr. Kerth will have responsibility for organizing and directing the Laboratory's diverse computing facilities to assure that they provide the level and quality of support necessary for Laboratory programs. He will also be responsible for research in the computer science area.

Dr. Kerth received his B.S. and Ph.D. degrees from the University of California, Berkeley, and joined the faculty in 1961. He is a Group Leader in the Physics Division and Director of Facilities Operations for the Time Projection Chamber (TPC). He is currently involved in experimental work with the Fermilab multimion spectrometer.

... Dr. David A. Shirley
Director, LBL

50B USER AREA CHANGES

Increased LBL space requirements coupled with a reduction in batch and outside usage dictate that we reduce the ready room space even further.

Room 1237 will become a combined interactive and graphics terminal room. Interactive terminals have been moved from 50B/4224 to 50B/1237, and Room 4224 has been converted to office space.

We will no longer have space for user lockers. Removal of the lockers began on Friday, October 14th. We have tried to reach all locker assignees requesting them to remove their materials from the lockers. We will remove materials belonging to those assignees we could not contact and will store them on-site for 90 days.

UNCLAIMED MATERIALS WILL BE THROWN OUT AFTER 90 DAYS. Please call Lisa Long or Peggy Yamada at x5947 to retrieve stored materials.

... F. Marvin Atchley, x5455

PROTECTION OF

DIFFICULT-TO-REPLACE FILES

Users who have files which would be difficult or costly to replace are urged to back these files up on tape. Back-up files should be stored in a secure place, remote from the Computer Center.

For assistance in preparing and storing these backup tapes, please call Roger Cochran, x5565.

... James A. Baker, x5739
LBL Computer Protection Manager

A computer can rattle off the Manhattan telephone directory unerringly, time after time -- which no human can do; but it cannot begin to distinguish one face from another, as babies do.

... Lee Dembart (NY Times)

POWERFUL CONVERSATIONAL GRAPHICS AVAILABLE ON THE IGM

Two widely used, and very popular, computer-aided chartmaking systems, produced by ISSCO, are currently available on the IGM VAX.

CUECHART

For the computer novice, or for the person who wants to make a quality graph in a hurry, at a graphics or non-graphics terminal, there is CUECHART. Through a prompting session with CUECHART, the user can easily create quality bar charts, line or scatter plots, pie charts, or word charts. There are over a dozen standard variations on each of these types of charts, and these standards can be expanded to include useful original designs. Currently the CUECHART user can obtain hardcopy on the Zeta 1453 at the Computer Center by typing

\$ CUEZETA

and by responding to the prompts. Procedures are being developed which will enable the user to

- 1) view the charts on a terminal (even if it is not a graphics terminal!) before requesting hardcopy.
- 2) choose from a number of hardcopy devices.
- 3) send charts directly to TID for publication.

TELL-A-GRAF

For the user who wants more flexibility in developing a presentation quality graph, there is TELL-A-GRAF. It may be run in a time sharing or batch mode using English-like commands. TELL-A-GRAF receives input from the user and sends output to devices. Thus, the user must provide information about the devices required for the task, by responding to a Profile Prompter session with TELL-A-GRAF, which in turn creates a file called TAGPRO.DAT. Default TAGPRO.DAT files are being created for the various devices supported by TELL-A-GRAF on the IGM. These device profile files will be made available to the novice user in order to expedite the initial sessions with TELL-A-GRAF.

Currently the TELL-A-GRAF environment includes the following devices:

AED 512 and 767 terminals
 HP 2623 terminal
 Printer (any terminal without graphics
 can be used as a debugging tool)
 Tektronix 4010 series terminals
 (ADM3A-Retrographics)
 VT125 (GIGI) terminal
 VT100 terminal with retrographics
 Zeta 1453 4-pen plotter

As new devices are added to the TELL-A-GRAF environment on the IGM, they will also appear in the Profile Prompter session. The environment is soon to be

expanded to include:

Calcomp 84 8-pen plotter
 DICOMED film recorder
 IBM Personal Computer
 FR 80 film recorder
 Tektronix 4100 series terminals
 Zeta 8 8-pen plotter
 Zeta 3600 4-pen plotter

In addition to defining the environment (through a file called TAGPRO.DAT), the user need only provide the name of the chart (bar, line, pie, or word) and the data to be used. All other information is optional.

The Data Connection

However, even the input data can be automated in TELL-A-GRAF with another ISSCO product called The Data Connection, which is soon to be installed on the IGM.

The Data Connection is an integrated portfolio of tools that enables TELL-A-GRAF to connect with, retrieve, store, and manipulate data from virtually any computer source reachable by the IGM VAX. In particular it:

- Extracts data from "flat" files (the most common type).
- Extracts data from files stored in nonstandard formats.
- Selects data from a file and summarizes and aggregates the data.
- Reads data from any report print file.
- Extracts data from tables stored in any format.
- Accesses data bases and "browses" for the data.
- Accepts data directly from application programs.
- Performs sophisticated calculations on data acquired from any source.

TELL-A-PLAN

In response to an International ISSCO User's Group request for a project management and planning graphics tool, ISSCO has developed TELL-A-PLAN. Planning systems such as this are used to aid in the design, implementation, and control of simple as well as complex project plans. These modern systems help ensure that all the necessary steps in the planning and control cycles are executed in a systematic fashion, thereby increasing the likelihood that the project will be completed on schedule and that the objectives will be met.

Tell-A-Plan can build detailed plans for ongoing projects and then aid in the control of their progress. Plans can be regularly updated, new tasks can be added, timing can be adjusted, and "What if?" analysis can be performed. Using the Critical Path Method, "Gantt" type horizontal bar project-planning charts can be produced

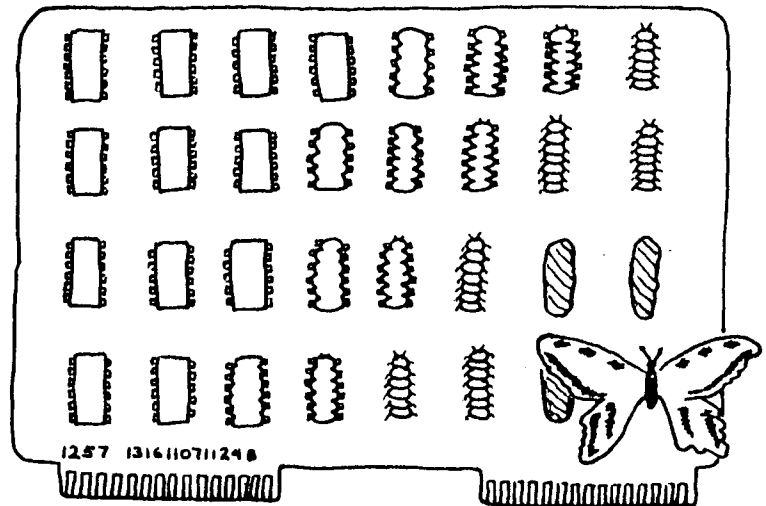
in a number of predefined and user-variable formats. Over 25 types of cost/resource plots in histogram, line, bar, and pie chart formats are available.

TELL-A-PLAN operates through the use of English-like commands, and as in the above products, the user does not have to know programming to do project planning or presentation-quality graphics.

TELL-A-PLAN is on order for a free trial period, and when it is received it will be installed on the IGM VAX for a period **ENDING DECEMBER 15, 1983**. (Carpe diem !)

Documentation on any of the above ISSCO products can be obtained from the Computer Center Library, x5529. Help as well as information on the various aspects of the ISSCO software is available at the Consulting Office, 50B/1245A, x5981.

... Claudette Lederer, x6945



There will be a special meeting of the Graphics Local User Group on Tuesday, Nov. 15 at 1:30 PM in the Bldg. 50B Conference Room (Rm. 4205). An Issco Corp. instructor will give an instructional overview of TELL-A-PLAN.

...Jim Miller, x6255

SICBIG NEWS

SICBIG, the Special Interest Committee on Large High-Speed Computers (established in the Golden Gate Chapter of the Association of Computing Machinery) meets on the first Wednesday of each month.

Those who would like to participate in a carpool to the meeting should contact Frank Olken (LBL, x5891)

For more info, contact Frank or

Mary Fowler
Technology Development of America,
Advanced Computation Facility,
233-3 NASA Ames Research Center
Moffett Field, CA 94035

(415) 965-6515

VOICES IN THE OFFICE . . .

ACM DINNER MEETING

Bob Nicholson (**Sydis, Inc.**), will speak at the Nov. 10 meeting of the San Francisco Peninsula Chapter of the Association for Computing Machinery. His topic: *How Voice Integration is Changing the Office Computer*.

Particulars: **Location** - The Bold Knight, 769 North Mathilda, Sunnyvale. **Schedule** - 5 PM, Council Meeting. 6 PM, No-host cocktails. 7 PM, Dinner. 8 PM, Speaker. **Cost for the Dinner**, \$13.00/members -- \$14.00/non-members. (No charge to hear speaker). To reserve, call (408) 739-9882 before Tuesday, Nov. 8. For more info, contact Mary Fowler (415) 965-6515 or .

... Frank Olken, x5891

LAWRENCE BERKELEY LABORATORY IS LOCATED IN THE HILLS ABOVE THE U.C. BERKELEY CAMPUS. THE (CHOCOLATE-COLORED) BUILDING 50 COMPLEX IS LOCATED ACROSS FROM THE (RED & WHITE SHUTTLE) BUS STOP. YOU CAN GET A FREE RIDE TO THE LAB ON THE SHUTTLE BUS : PICKUP POINT IS AT SHATTUCK & CENTER IN DOWNTOWN BERKELEY.

TERMINAL SWITCH ACCESS NAMES

COMPUTER	DEVELCON DIRECTORY NAME	--- GANDALF CLASS CODE ---		
		300 bps	1200 bps	9600 bps
VAX Program Development Machine	PDM	na	na	na
VAX Numerical Modeling Machine	NMM	na	na	71
VAX Interactive Graphics Machine	IGM	na	na	73
PDP 11/70 (UNIX 1)	UNX1	15	na	11
PDP 11/70 (UNIX 3)	UNX3	55	na	51
CDC 6600B, 6400C	RECC	05	03	01
IBM 4341 (UCB)	CCDB	na	na	na

(1) **na** means NO DIRECT ACCESS. However, Indirect access from GANDALF to all computers is available via DEVELCON.

GANDALF class code **67** connects you to DEVELCON.

(Then) enter **return** (<cr>) so that DEVELCON can determine your terminal speed.

DEVELCON responds with **Request:**

(Then) you enter your DEVELCON directory name and a carriage return.

(If you use this method more than occasionally, please contact Sig Rogers, x6713).

Note: There are many additional hosts operated by other groups that are available on the terminal switches. To gain access, you should make arrangements directly with the appropriate group representative.

(2) ACCESS FROM GANDALF/DEVELCON

GANDALF -- with TSB †

1. Turn on terminal.
2. Push button on TSB.
3. When green light comes on, hit <cr> (return).
GANDALF will prompt with an asterisk (*)
5. Enter class code (e.g., "51" for UNX3) & <cr>
GANDALF will prompt with **SERVICE XX START**
6. Another <cr> will get you the host prompt.

GANDALF -- without TSB †

1. Turn on terminal.
2. Hit **BREAK** key.
GANDALF will prompt with an asterisk (*)
3. Enter class code (e.g., "11" for UNX1) & <cr>
GANDALF will prompt with **SERVICE XX START**
4. Another <cr> will get you the host prompt.

DEVELCON

1. Turn on terminal.
2. Push button on TSB †. When green light comes on, hit <cr>.
3. When you get a **Request:** prompt, enter host directory name (e.g., **unx1**), followed by a <cr>.

(3) **DIAL-UP ACCESS** to DEVELCON is available.

486-4959 -- 300 BPS

486-4979 -- 1200 BPS

VA-3400 & 212A equivalent.

... Sig Rogers, x6713

† (Blue) Terminal Support Box

NEWS OF LOCAL USER GROUPS

Lab folks who are interested in establishing a Local User Interest Group on site should contact Dennis Hall, x6053.

>> DATATRIEVE LUG NEWS <<

NOVEMBER LUG MEETING

The next meetings of the Datatrieve User Group will be held from 1:30 to 3 PM on November 7 & 21, in the Bldg. 50B Conference Room (50B/4205). Bert Albrecht will present advanced Datatrieve tutorials on topics suggested by users.

For more information, contact LUG facilitator . . .

. . . Valerie Sherriffe, x5362 or x4460

= = = = =

>> GRAPHICS LUG NEWS <<

TEKTRONIX DEMO AT NEXT LUG MEETING

The third meeting of the GRAPHICS Local User Group will be at 2:30 PM Friday, December 9 in the Bldg. 50A Conference Rm., (Rm. 5123.) Representatives from TEKTRONIX will give an instructional hardware presentation of their Model 4105 & 4115 terminals and Model 4691 printer and their PLOT10 software package for that hardware.

A Computer Graphics Survey Questionnaire, vendor documentation, reference cards, pocket guides, color media presentations, and 'Getting Started' documentation will be available.

. . . *Travelling Show*

On November 15, there will be a demonstration of the TEKTRONIX terminal and plotters in their bus, which will be on-site from 9 AM to 1 PM at the Cafeteria Parking lot. For more info, contact . . .

For the GUG information service, type GUGNEWS (or GUG) on the IGM VAX, or contact . . .

. . . Jim Miller, x6255
(JMILLER on IGM)

= = = = =

RSX LUG NEWS

The RSX-11 Local User Group normally meets at 2 PM on the fourth Thursday of the month in the Bldg. 46A Conference Room. Each meeting has a topic (SYS-GENs, etc.), but there are also general discussions open to whatever people need. Come and find out what these meetings are like.

Users interested in attending the November meeting of the RSX Local User Group should contact . . .

. . . Everett Harvey, x6411

>> RT-11 LUG NEWS <<

MEETING OF RT-11 LUNCH BUNCH

The RT-11 User (Lunch) Group meets on the first Thursday of each month at noon in the Bldg. 46A (RTSG) Conference Room. On November 3, Mark Rivers will talk on RTNET file transfer utility & communication programs, a serial interface device handler, and a stepping motor controller code.

For more info, contact . . .

. . . Mike I. Green, x4607
or x6411

= = = = =

>> PERSONAL COMPUTER LUG NEWS <<

FIRST MEETING OF PC USER GROUP

The first PERSONAL COMPUTER Local User Group meeting will be at 12 noon Thursday, November 17 in the Bldg. 70A Conference Rm. (3377).

At the behest of LUGmembers, the agenda will include an informal discussion of current personal computer topics with Al Biocca, Jim Guggemos and Fred Goulding, followed by a short organizational meeting.

For the PCLUG information service, type PCLUGNEWS (or PCLUG) on the IGM VAX machine.

For more information, contact . . .

. . . Jim Miller, x6255
(JMILLER on IGM)
. . . Will Siri
. . . Mark Strovink
. . . Henry Ruderman

[The contact person at UCB for pricelists and discount packets is Penny Gee, 642-5205; the contact person at LBL is Kathleen Handron, x5474].

= = = = =

VAX LUG NEWS

The next meeting of the VAX Local User Group, will be held at 2 PM Tuesday, November 1, in Bldg. 50B, Rm. 3228. For more information, contact LUG facilitator . . .

. . . Nancy Deerinck, x4691

UCLBL COMPUTER CENTER

PM SCHEDULE

Effective NOVEMBER 1, 1983

7600 (CDC) Mondays
 CDC 0500 - 0800
 Thursdays
 CDC 0600 - 0800

6600B (CDC) Tuesdays
 CDC 0500 - 0800

6400C (CDC) Mondays
 CDC 0500 - 0800

UNIX1 Saturday, November 12
 RTSG 0030 - 0600
 Sunday, November 13
 RTSG 0030 - 0600
 Monday, November 14
 RTSG 0030 - 0600

UNIX2 Saturday, November 19
 RTSG 0030 - 0600

UNIX3 Sunday, November 20
 RTSG 0030 - 0600

IGM Tuesday, November 22
 RTSG 0030 - 0800

NMM Monday, November 28
 RTSG 0030 - 0800

PDM Thursday, November 10
 RTSG 0030 - 1200
 Friday, November 11
 RTSG 0030 - 1200
 Saturday, November 12
 RTSG 0030 - 0800

ATL Thursdays
 Maint ... 0600 - 0800

COM Tuesdays
 Maint ... 0700 - 0900

PSS Wednesdays
 CDC 0600 - 0800

SYSTEMS PERFORMANCE
 IN SEPTEMBER/1983**7600**

Systems Availability 94.28%
 Median Service Interval 5.67 (hrs)

6000B

Systems Availability 91.42%
 Median Service Interval 36.48 (hrs)

6400

Systems Availability 98.66%
 Median Service Interval 47.98 (hrs)

UNIX1

Systems Availability 96.66%
 Median Service Interval 33.77 (hrs)

UNIX3

Systems Availability 96.99%
 Median Service Interval 34.75 (hrs)

PDM

Systems Availability 97.07%
 Median Service Interval 49.83 (hrs)

NMM

Systems Availability 97.56%
 Median Service Interval 41.25 (hrs)

IGM

Systems Availability 93.00%
 Median Service Interval 28.92 (hrs)

 Total No. of Jobs Processed: **48,240**
 6000's - **19,575** : 7600 - **28,665**

7600 TURNAROUND TIME

% of RUSH jobs returned
20 min 2 hrs 4 hrs
 87.65 98.95 99.76

% of ALL jobs returned
20 min 2 hrs 4 hrs
 79.24 91.24 94.12

% returned, CU limit = 100
20 min 2 hrs 4 hrs
 88.14 97.74 98.31

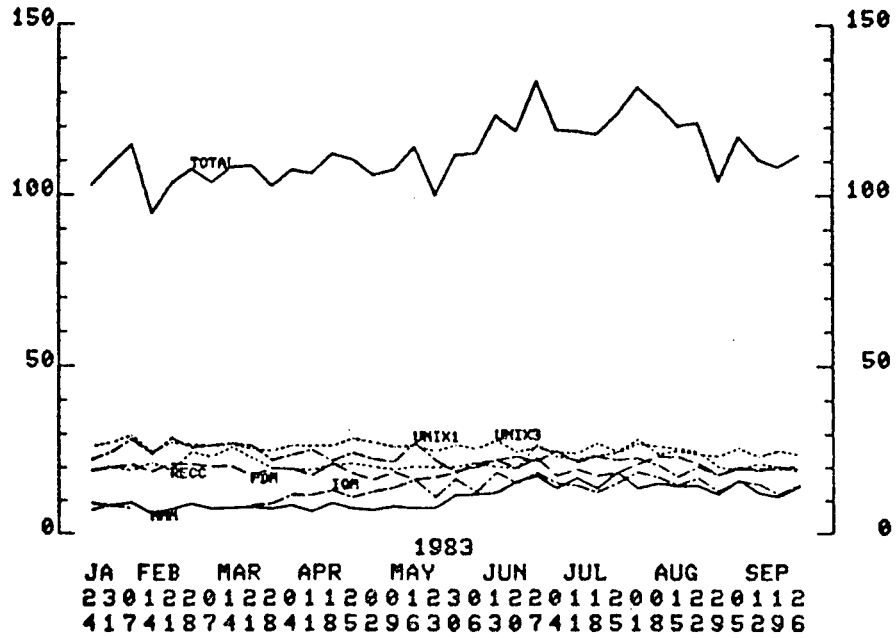
% returned, CU limit = 500
20 min 2 hrs 4 hrs
 91.71 99.06 99.69

% returned, CU limit \geq 1000
20 min 2 hrs 4 hrs
 36.45 61.45 70.98

INTERACTIVE STATISTICS

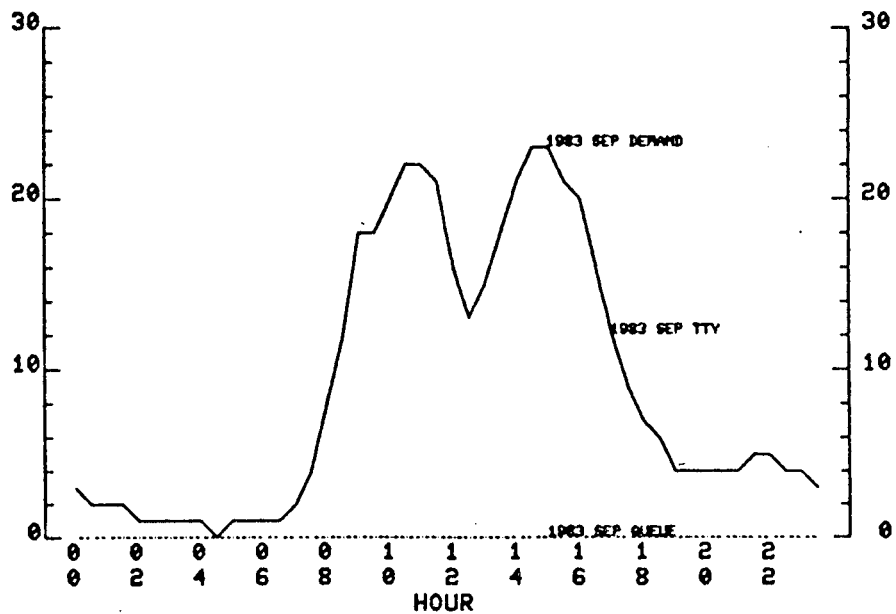
INTERACTIVE TERMINAL ACTIVITY

AVERAGE NUMBER OF TERMINALS CONNECTED
 SAMPLED AT HOURLY INTERVALS, PRIME USE PERIODS, WORKDAYS



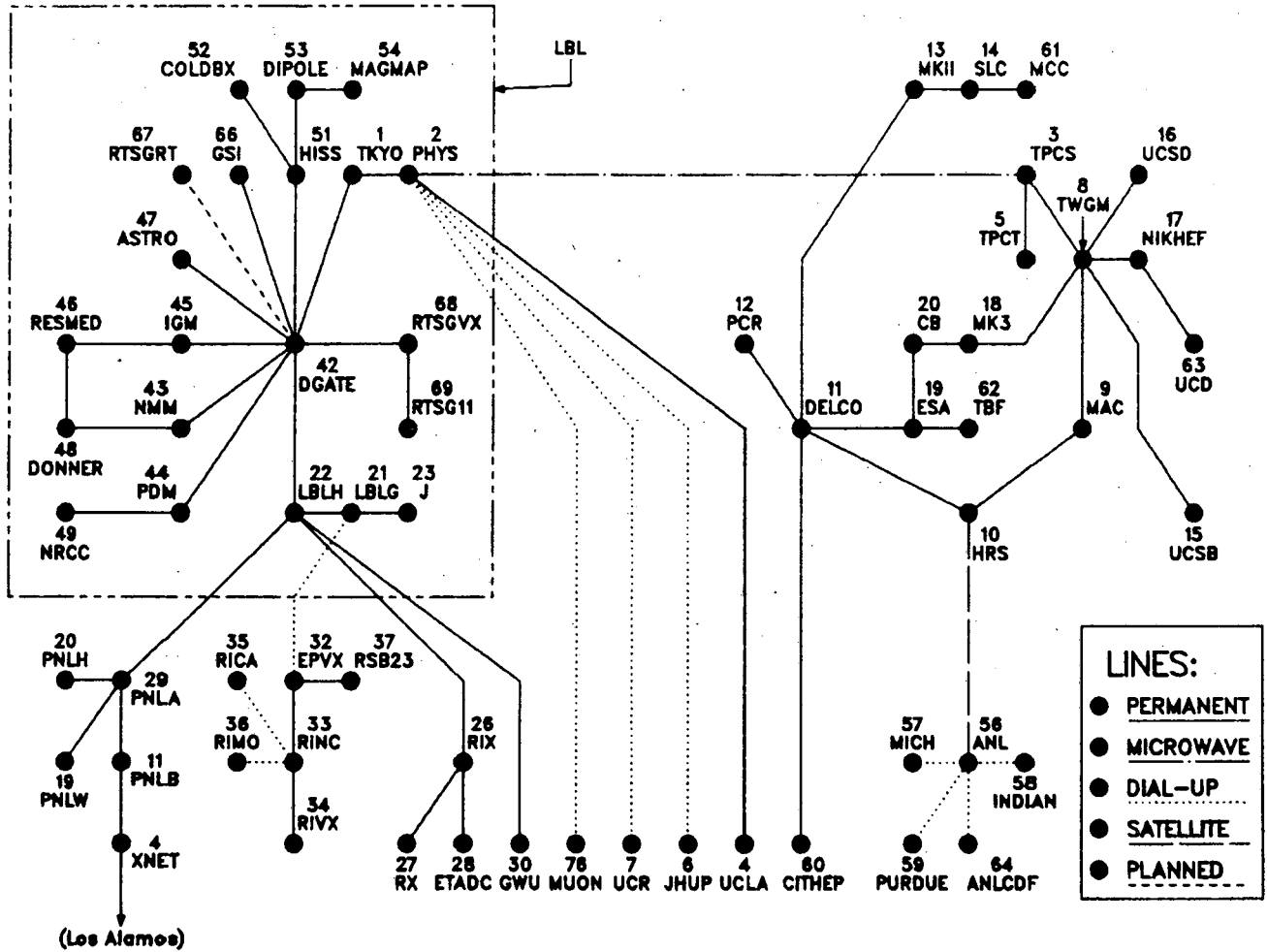
RECC CONNECTIONS AND UNSATISFIED DEMAND
 6600 AND 6400 COMPUTERS

SEP 1983 WORKDAYS



LBL DECNET CONFIGURATION

REVISED JULY 1983
STEVE LEWIS UC/LBL



YES I would like to receive the Computing Newsletter

NAME

FIRM.....

CITY

STATE.....

ZIP

PHONE.....

COMMENTS.....

.....

.....

.....

.....

.....

.....

Return to:.....Newsletter - Bldg. 50 B, Rm 1245
Lawrence Berkeley Laboratory - One Cyclotron Road
Berkeley, CA 94720
Attention: **DORTHA HINES**

.....
"Thou hast seen nothing yet."
... Miguel de Cervantes

The Computing Newsletter, published monthly, provides much useful current information to our users and is mailed to them free, upon request.

If you would like to have it sent to you, simply fill out the form inside and your name will be added to our mailing list.

Computer Center Library
UC Lawrence Berkeley Laboratory
Bldg. 50B, Rm. 1245
One Cyclotron Road
Berkeley, CA 94720