

## **UC Davis**

### **UC Davis Previously Published Works**

**Title**

Cajal, Retzius, and Cajal–Retzius cells

**Permalink**

<https://escholarship.org/uc/item/8125w5vc>

**Journal**

Frontiers in Neuroanatomy, 8(JUN)

**ISSN**

1662-5129

**Authors**

Martínez-Cerdeño, Verónica  
Noctor, Stephen C

**Publication Date**

2014

**DOI**

10.3389/fnana.2014.00048

Peer reviewed



# Cajal, Retzius, and Cajal–Retzius cells

Verónica Martínez-Cerdeño<sup>1,2,3</sup> \* and Stephen C. Noctor<sup>3,4</sup>

<sup>1</sup> Institute for Pediatric Regenerative Medicine, University of California at Davis, Sacramento, CA, USA

<sup>2</sup> Medical Pathology and Laboratory Medicine, University of California at Davis, Sacramento, CA, USA

<sup>3</sup> MIND Institute, University of California at Davis, Sacramento, CA, USA

<sup>4</sup> Department of Psychiatry and Behavioral Sciences, University of California at Davis, Sacramento, CA, USA

## Edited by:

Fernando De Castro, Hospital Nacional de Paraplégicos – Servicio de Salud de Castilla-La Mancha, Spain

## Reviewed by:

Alessandra Angelucci, University of Utah, USA

Kenji Shimamura, Kumamoto University, Japan

## \*Correspondence:

Verónica Martínez-Cerdeño, Institute for Pediatric Regenerative Medicine, Medical Pathology and Laboratory Medicine, University of California at Davis, 2425 Stockton Boulevard, Sacramento, CA 95817, USA  
e-mail: vmartinezcerdeno@ucdavis.edu; vmc@ventricular.org

The marginal zone (MZ) of the prenatal cerebral cortex plays a crucial role in cellular migration and laminar patterning in the developing neocortex and its equivalent in the adult brain – layer I, participates in cortical circuitry integration within the adult neocortex. The MZ/layer I, which has also been called the plexiform layer and cell-poor zone of Meynert, among others, is home to several cell populations including glia, neurons, and Cajal–Retzius (CR) cells. Cajal once said that the MZ is one of the oldest formations in the phylogenetic series, and that the characteristics of layer I in human are similar in all vertebrates except fish (Ramon y Cajal, 1899). Despite the presence of CR cells in the MZ/layer I of all developing and adult vertebrate brains, and more than one hundred years of research, the phenotype and function of layer I cells have still not been clearly defined. Recent technological advances have yielded significant progress in functional and developmental studies, but much remains to be understood about neurons in MZ/layer I. Since the time of Retzius and Cajal, and continuing with modern era research from the likes of Marín-Padilla, the study of CR cells has been based on their morphological characteristics in Golgi staining. However, since Cajal's initial description, the term "CR cell" has been applied differently and now is often used to indicate reelin (Reln)-positive cells in MZ/layer I. Here we review the history of work by Cajal, Retzius, and others pertaining to CR cells. We will establish a link between original descriptions of CR cell morphology by Cajal, Retzius, and others, and current understandings of the cell populations that reside in MZ/layer I based on the use of cellular markers. We propose to use the term "CR cell" for the class of neurons that express Reln in the MZ/layer I in both prenatal, developing and adult cerebral cortex.

**Keywords:** Ramón y Cajal, Cajal–Retzius cells, marginal zone, layer I, horizontal cells, short axon cells, Reelin

## POSTNATAL MAMMALIAN LAYER I BY CAJAL

Neurons in layer I were first described by Ramon y Cajal (1890). After several years of work using a variety of staining protocols including the Golgi method, Cajal concluded that there were two types of cells in layer I of the postnatal mammalian cerebral cortex: large horizontally oriented neurons, and neurons with a short axon [also called "Golgi corpuscle cells" by Ramon y Cajal (1897)]. Cajal also noted that other cellular structures were present in layer I including terminal dendritic bouquets, ascending axonal arborizations, and glial cells. This review will focus on neurons that have their soma within layer I: Cajal's horizontal cells, and cells with a short axon. We will contrast the description of these cells by Cajal and his colleagues more than one hundred years ago with current information.

In 1890, Cajal described a new type of large fusiform neuron in layer I of neonatal rabbit cerebral cortex that had a horizontal orientation. He collected additional data from the neonatal cerebral cortex of cat, rabbit, rat, and dog to show that in each species these cells were scarce and positioned at different levels in layer I, particularly deeper portions of layer I and superficial portions of layer II. These horizontal cells possessed processes that were parallel to the pia and from which originated thin branches, one

of which was an axon. The axonal process of these cells was very long and thick with ascending collaterals that extended at right or obtuse angles to terminate exclusively within layer I (Ramon y Cajal, 1895).

In 1895, Cajal described a second distinct population of layer I neurons that possessed a short axon. These cells were distributed equally at different levels within layer I – superficial, intermediate and deeper portions – in neonatal rabbit and rat. The short axon cells exhibited several different morphological shapes and sizes, but tended to be larger in deeper portions of layer I, and gave rise to a large number of dendrites extending from the perikarion in all directions, but primarily toward the pial surface (Ramon y Cajal, 1895). The dendrites of short axon cells were usually very short, branched near the soma, and did not exit layer I (Ramon y Cajal, 1899). Based on morphology, he described at least two subtypes of short axon cells in mammals and at least four principle subtypes in human. He used the terms common type or medium-sized, large type, small type, and neurogliaform type to distinguish these cell subtypes. He determined that the medium-sized cells were the most abundant of the short axon cells in layer I and were positioned within intermediate and deep portions of layer I. The medium-sized cells were characterized by ascending dendrites and

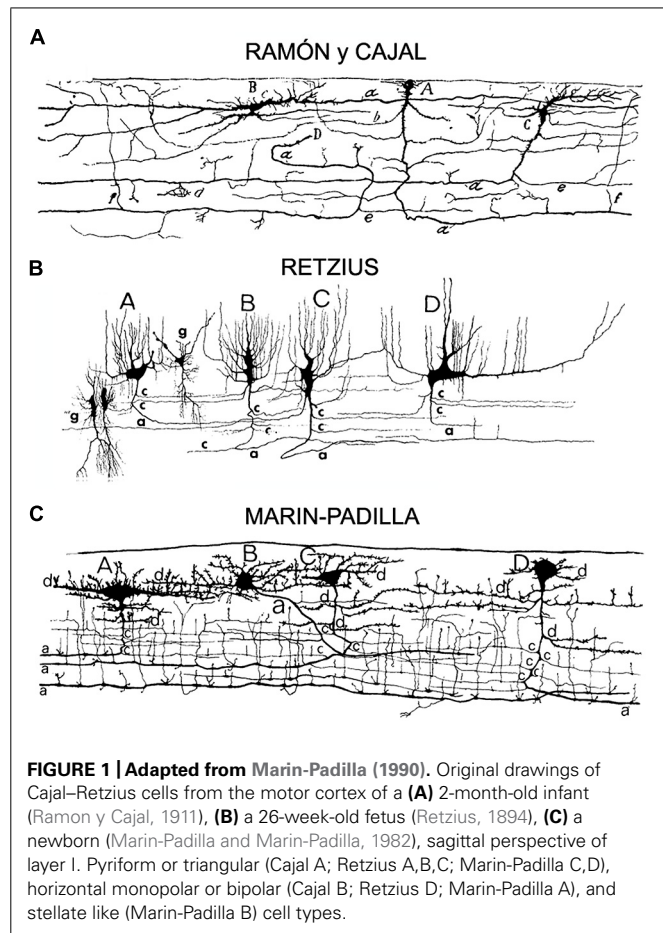
an axon that coursed parallel to the pial surface of the cortex. The large type possessed long, thick dendrites that descended into layers II and III, and a thick axon that ran parallel to the pia within layer I. The small cell type had small oval or piriform soma and a thin axon that ramified near the cell body. Some of the small cells were positioned very close to the pia. Finally, Ramon y Cajal (1895) described the neurogliaform type as dwarf cells in the deepest portion of layer I that elaborated very complex and dense terminal arborizations.

### PRENATAL HUMAN MARGINAL ZONE BY RETZIUS

In 1891, one year after Cajal described horizontal cells in layer I of the postnatal rabbit cortex, Retzius described cells located within the outer layer of the cerebral cortex in human fetuses at six to eight months of gestation. In his writings, Retzius commented that layer I cells had previously been noted by many other neuroanatomists using Golgi and other techniques, including Meynert, Henle, Schwalbe, Krause, Ranvier, Toldt, Kahler, and Obersteiner. However, due to the difficulty of impregnating these cells with the Golgi technique, and since some of these researchers thought that Golgi-labeled structures in layer I were artifacts, and other thought that they were glial cells, these layer I cells were not described in any detail. Therefore, it was Cajal and then Retzius who first dedicated time to study these complex layer I cells (Retzius, 1893).

Retzius first studied the MZ in the developing cerebral cortex using Golgi stained material from late gestation fetal human, and later in prenatal mouse, rat, cat, and dog. He noted that it was difficult to obtain good results using the Golgi method, that he was only able to stain a small proportion of MZ cells in third-trimester human cortex, and that he was not able to stain these cells in fetal human cortex younger than 6 months of gestation, nor in the brains from young children. His first opinion was that the cells he stained within the human MZ were very different both in form and orientation from the cells described one year earlier by Cajal in postnatal rabbit. Retzius initially thought that these cells were glial cells, but later agreed with Cajal that they were neurons, and also concluded that the human cells shared much in common and were potentially related to those described by Cajal. He initially referred to these cells as carrots cells since its body resembled a carrot, but later suggested the name “Cajal cells.” Therefore, it was Retzius who first used the term “Cajal cells” for cells of layer I in postnatal animals and fetal human. He described how the “Cajal cells” in humans exhibited soma with different morphological shapes and had cellular processes that were more numerous and elaborate than in other mammals. It is important to note that the cells first described by Cajal had a precisely positioned horizontal soma, but this was not the case for the cells described by Retzius (1893). Furthermore, if we were to stain the cells described by Cajal and by Retzius with somatic markers available today, such as ReIn, they may not appear to be related cell types based on morphology.

Retzius described human fetal Cajal cells as having round, oval, carrot-like, polygonal, or unevenly shaped soma of different sizes positioned at different levels within layer I, in some cases displaying a parallel orientation and in other cases a perpendicular orientation with respect to the pia (see **Figure 1A**). Retzius showed that



**FIGURE 1 | Adapted from Marin-Padilla (1990).** Original drawings of Cajal–Retzius cells from the motor cortex of a **(A)** 2-month-old infant (Ramon y Cajal, 1911), **(B)** a 26-week-old fetus (Retzius, 1894), **(C)** a newborn (Marin-Padilla and Marin-Padilla, 1982), sagittal perspective of layer I. Pyriform or triangular (Cajal A; Retzius A,B,C; Marin-Padilla C,D), horizontal monopolar or bipolar (Cajal B; Retzius D; Marin-Padilla A), and stellate like (Marin-Padilla B) cell types.

these cells had several processes that emanated in various directions from the soma: superficially toward the pial surface, deep into the underlying cortex, or horizontally via small thick processes that often lead toward the surface. They had a total of 6–8 horizontal branches, each elaborating multiple processes extending to the surface and forming a characteristic mesh pattern (Retzius, 1893; Koelliker, 1896).

In a later publication, Cajal again described his two types of layer I cells – the horizontal and short axon cells – and also referred to a third type as “special cells of the cortex named by Retzius as Cajal cells.” This emphasizes that, at that point in history, Ramon y Cajal (1897) did not think that his horizontal cells and the layer I cells described by Retzius were homologous. Soon after Veratti proposed the idea of including the “Cajal cells” described by Retzius within Cajal’s horizontal cell category. Cajal came to accept this proposal, saying “with time I feel less repugnancy toward this idea” (Ramon y Cajal, 1897). In his later publications, Cajal referred to his horizontal cells and to the “Cajal cells” that were described by Retzius as one and the same.

### CAJAL–RETZIUS CELLS BY KOELLIKER

While Retzius was not able to label Cajal cells with the Golgi method in cortical tissue obtained from children, Koelliker (1896) used Golgi and clearly detected such cells in cortical tissue from both children and adults and agreed with Retzius’ descriptions.

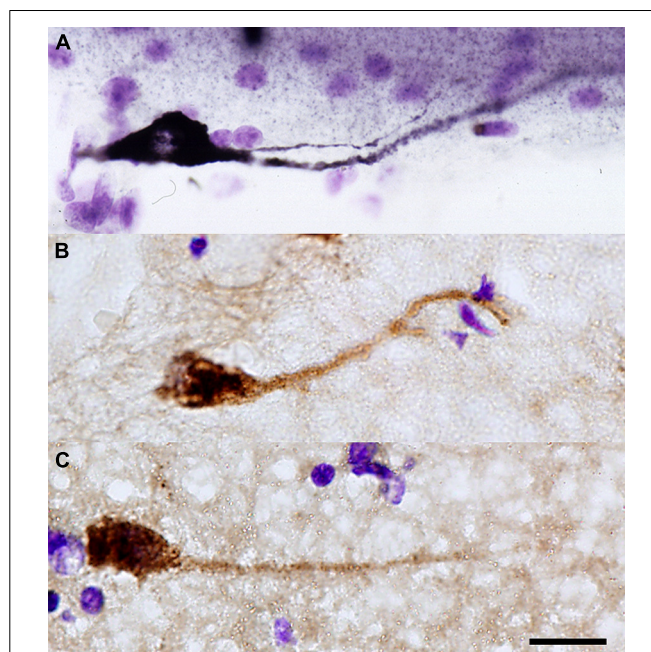
Koelliker (1896) thought it difficult to discern the function of Cajal cells (in postnatal animals) and Retzius cells (in prenatal human). His opinion was that both cell types were to be kept separate and for this purpose he named them differently. He wrote that Cajal cells were much simpler and that there were fewer Cajal cells than Retzius cells in the MZ/layer I. The characteristic features of Cajal cells were so similar to neurons that he assumed they were indeed nerve cells. In contrast, he believed that the Retzius cells were glial by nature, and he suggested that they were “special glial transitory” cells. He stated that if Retzius cells were nerve cells, he could not explain the function of the multiple extensions ending at the surface, and the function/meaning of the entire structure would be in question. He reasoned that all of the superficial extensions of the Retzius cells ended in the upper surface glial layer of the brain, which is located above the stratum zonale that does not contain any nerve fibers (Koelliker, 1896). Nonetheless, some researchers have suggested that it was Koelliker who coined the term CR cells to describe the layer I cells described by Cajal in neonatal brain, and by Retzius in fetal brain (Huntley and Jones, 1990).

### PRENATAL MARGINAL ZONE AND POSTNATAL LAYER I IN HUMAN BY CAJAL

Cajal followed his discoveries and those of Retzius by carefully studying the morphological similarities and differences between horizontal neurons in fetal MZ and neonatal and adult layer I in human. He concluded that horizontal cells were more abundant and larger in human. Cajal used the Golgi method to examine layer I cells in tissue obtained from seven- to nine-month human fetuses, and reported that horizontal cells were distributed through the entire thickness of the MZ, but were more numerous in close proximity to the pia (Ramon y Cajal, 1899). Agreeing with the descriptions by Retzius, he reported that the morphology of fetal horizontal cells varied, and included cells with fusiform, triangular, stellar, and piriform morphologies. The most characteristic features of these cells were horizontal processes that branched, yielding an extraordinary number of long, varicose horizontal fibers from which sprung at right angles innumerable ascending processes that terminated in rounded knobs near the surface of the cortex. After giving rise to a large number of ascending processes, the horizontal processes became thinner and finally subdivided into terminal branches that extended under the pia or in the most superficial region of the MZ (Ramon y Cajal, 1899). Cajal compared the data he obtained from humans with that obtained from rabbit, cat and other animal species. He concluded that in non-human mammals, fetal horizontal cells give rise to a comparatively smaller number of horizontal branches and that these extended shorter distances than those in human. Cajal compared the MZ in several cortical areas and came to the conclusion that it was populated by the same elements across cortical areas. The only potential difference he noted was that in some areas, for example motor cortex, the MZ was thicker than in others, and Ramon y Cajal (1899) proposed that this resulted from an increased number of pyramidal neuron dendritic terminations and horizontal cells. Cajal also compared the morphological features of cortical CR cells to those in the MZ of cerebellum, hippocampus and

dentate gyrus and found them to be similar (Ramon y Cajal, 1899).

After examining neonatal layer I in tissue obtained from 15- to 30-day-old human brains, Cajal reported that most of the ascending branches described by Retzius in the fetal brain were no longer present after birth, and that the remaining fibers changed directions and ramified within layer I (see **Figure 1**). He determined that layer I cell bodies were smaller in the neonatal brain, and that horizontal projections were thinner in diameter but notably longer when compared to fetal cells (Ramon y Cajal, 1899). These long horizontal branches formed a system of parallel fibers that retained their original orientation. They had a thick myelinated axon that ran parallel to the pial surface for long distances, and issued collateral processes that ramified around the soma of short axon cells in layer I (Ramon y Cajal, 1895). Basing his work on Retzius' description of horizontal cells in the human fetus, Cajal identified three main morphologies of adult CR cells, unipolar or marginal cells, bipolar cells, and stellate or triangular cells. Cajal was not able to stain adult layer I cells with Golgi but used other techniques, including methylene blue, to describe the presence of short axon cells in adult layer I (“cilindro-eje” cells in Spanish). Cells exhibiting a morphology equivalent to Cajal's large horizontal cells have since been reported in vertebrates including crocodiles, lizards, non-primate mammals, non-human primates, and human (see **Figure 2**; Ramon y Cajal, 1896; Bernier et al., 1999; Goffinet et al., 1999; Perez-Garcia et al., 2001; Martínez-Cerdeño and Clasca, 2002; Martínez-Cerdeño et al., 2002, 2003; Tissir et al., 2003; Molnar et al., 2006; Ramos-Moreno et al., 2006; Meyer, 2010).



**FIGURE 2 | ReIn+ horizontal cells in the temporal cortex of adult macaque (A) and human (B,C).** Scale bar: 10  $\mu$ m.



Cajal hypothesized that the function of layer I cells was probably to establish connections between the terminal arborizations of Martinotti cell axons and/or association fibers coming from the white matter, with the terminal branches of the pyramidal neuron apical dendrites. He further proposed that the function of the large horizontal cells was to establish connections between layer I elements that were separated by considerable distances, while short axon cells performed the same function for elements separated by short or moderate distances (Ramon y Cajal, 1899).

### ADULT HUMAN LAYER I BY MARÍN-PADILLA

Neither Retzius nor Cajal were able to Golgi-stain layer I cells in the adult cortex. However, one century later Marín-Padilla successfully used the Golgi method to perform detailed characterizations of cells within layer I of human neocortex (Marin-Padilla and Marin-Padilla, 1982). Marín-Padilla described the presence of cells in layer I of infants (eight-month-old), children (eight-year-old), young adults (16-year-old), and adult (26-year-old; Marín-Padilla, 1990; see **Figure 1B**). Until Marín-Padilla demonstrated the presence of both horizontal and short axons cells in adult layer I, the concept that these cells do not exist in the adult human brain had become widely accepted. The idea that CR cells are not present in the adult may have been initially proposed by Connel (1941, 1947, 1951). This hypothesis was supported by work that showed degenerating CR cells in the MZ of both rodents and humans (Derer and Derer, 1990; Meyer and Gonzalez-Hernandez, 1993; Super et al., 1998; Zecevic and Rakic, 2001; Abraham and Meyer, 2003; Tissir et al., 2009). But, recent work has shown that layer I horizontal neurons that express Reln (CR cells) persist in the adult layer I (see **Figure 2**; Pesold et al., 1999; Martínez-Cerdeño and Clasca, 2002; Martínez-Cerdeño et al., 2002, 2003; Chowdhury et al., 2010). Several factors may have contributed to the concept that CR cells were absent from layer I in adult human neocortex. First, the progressive postnatal expansion of the cerebral cortex dilutes the CR cell population within layer I (Marin-Padilla, 1990). Marín-Padilla studied adult CR cells in detail and concluded that the cortical expansion that occurs during postnatal development impacts the location of CR cell soma and principal dendrites, but does not alter the distribution of the long horizontal axonal processes. As a result, CR cell bodies are only found in specific locations, while the axonal processes are distributed throughout layer I in the entire cerebral cortex (Marin-Padilla, 1990). Furthermore, Marín-Padilla demonstrated that the axonal processes in layer I of any given cortical area represent those of all the CR cells in that area. Therefore, CR cell numbers are low in some cortical regions and the study of many consecutive sections is required to encounter CR cell bodies and principle dendrites. Despite the apparent change in layer I cell density, Marín-Padilla (1990) emphasized that CR cells persist in the adult cerebral cortex with essentially unchanged morphological properties, especially of axonal processes. Second, additional cell populations are present in high numbers in the MZ of the prenatal and developing brain, but are absent or reduced in the adult, contributing to the progressive cell loss in the MZ/layer I. Many cortical interneurons migrate through the MZ en route from the ganglionic eminences to the

dorsal neocortex, but leave the MZ to enter the underlying cortical plate (Kriegstein and Noctor, 2004). Cortical microglia are also concentrated in the pial meninges and MZ during development, but achieve an even distribution throughout cortical tissue in the mature brain (Cunningham et al., 2013). Both migrating cortical interneurons and microglia can present with horizontal profiles in the MZ, temporarily adding to the overall population of horizontally oriented cells in the MZ/layer I during development.

### MODERN ERA CAJAL–RETZIUS CELL RESEARCH

The first neurochemical characterization of CR cells was performed by Huntley and Jones (1990), who showed that CR cells express calcium-binding proteins such as calbindin and parvalbumin. More recent work has shown that the expression of calcium binding proteins within layer I cell populations is heterogeneous and depends on the species and stage of development (Martínez-Galan et al., 2014). CR cells are glutamatergic (Imamoto et al., 1994; Alcántara et al., 1998; Marín-Padilla, 1998; Meyer et al., 1998; Ina et al., 2007) and best known for their expression of Reln and a series of transcription factors including Tbr1, Tbr2, and P73 (Hevner et al., 2001, 2003; Meyer et al., 2002; Hodge et al., 2013). Reln is synthesized and secreted into the extracellular matrix of the MZ, diffusing through the developing cortex. Reln binds to the ApoR2 and VLDLR receptors expressed by radial glial cells and newborn neurons migrating to the cortical plate (Rice et al., 1998; D’Arcangelo et al., 1999; Rice and Curran, 2001; Tissir and Goffinet, 2003). Reln activates the adapter protein Dad1, and PIK3, leading to serine 3 phosphorylation of cofilin, an actin-depolymerizing protein that promotes the disassembly of F-actin. Phosphorylation at serine 3 renders cofilin unable to depolymerize F-actin, thereby stabilizing the cytoskeleton (Frotscher et al., 2009). CR cells are believed to be crucial for both the development and the evolution of a laminated pattern in the pallium (Trommsdorff et al., 1999; Howell et al., 2000; Kuo et al., 2005; Abellan et al., 2010). In addition, it has been suggested that CR cells signal to ventricular zone progenitors and function as modulators of early cortical patterning (Griveau et al., 2010). For a comprehensive review on the function of Reln protein, see Frotscher et al. (2009).

Recent studies have determined that layer I cells are derived from extracortical sites, including the cortical hem, septum, retrobulbar area, and thalamic eminence (Grove et al., 1998; Meyer and Wahle, 1999; Meyer et al., 1999; Meyer et al., 2002; Abraham et al., 2004; Takiguchi-Hayashi et al., 2004; Bielle et al., 2005; Yoshida et al., 2006; Cabrera-Socorro et al., 2007; Ceci et al., 2010; Gu et al., 2011). The newly generated CR cells migrate tangentially within layer I to reach their destination. Some evidence suggests that the CR cells generated at different sites populate different cortical regions and may thus play distinct, region-specific roles and function in neocortical development (Bielle et al., 2005; Gu et al., 2011). On the other hand, CR cells of different ontogenetic origins display comparable functional properties in the early postnatal cortex and may therefore perform similar functions within the transient neuronal networks of the developing cortex (Sava et al., 2010). The distinct origins of CR cells are likely an additional factor that contributes to the heterogeneity

of layer I cell types. For more detail on CR cell origins, see Meyer (2010).

Recent studies have also expanded our knowledge of CR cell physiology. CR cells, together with GABAergic interneurons, form a dense network in layer I throughout various neocortical areas, exhibit characteristic membrane patterns and firing patterns, and receive both GABAergic and non-GABAergic input (Anstötz et al., 2013). Modern studies propose, as Cajal did one century earlier, that the source of CR cell inputs include layer I-targeting Martinotti-like interneurons, which express functional group I mGluRs (Cosgrove and Maccaferri, 2012). This suggests that enhanced glutamate release is critical for the establishment of an mGlu1 $\alpha$ -dependent micro-circuit, which leads to the activation of CR cells (Cosgrove and Maccaferri, 2012). It has also been shown that GABAergic subplate neurons innervate CR cells. These synaptic connections are thought to be transient and therefore important for neocortical development (Myakhar et al., 2011). For more details, see Luhmann et al. (2014).

DeFelipe together with other 42 experts in cortical cytoarchitecture recently classified cortical interneurons using the “gardener” method for classification and found high consensus for some terms such as Chandellier cell and Martinotti cell. However, this approach found low consensus among experts for the term CR cell (DeFelipe et al., 2013), demonstrating that defining CR cells is not consistent across the field. It is clear that MZ/layer I cells are heterogeneous in morphology, size, location, age, molecular expression, origin, and species. This apparent heterogeneity presents challenges and can potentially seed confusion in reporting results. This is not a new problem as the term “CR cell” has been applied differently for over the last 100 years. For example, CR cells may refer to horizontal cells present only during fetal development (Bradford et al., 1977), or to short axon cells in embryos and adult (Marin-Padilla, 1990), or MZ/layer I cells that express AChE but not GABA (Huntley and Jones, 1990; Soda et al., 2003), or more commonly as the MZ cells that express Reelin (Meyer and Goffinet, 1998). Cell classification can be approached as lumping or splitting. We suggest a definition of CR cells that is more inclusive. In considering the most basic question: what is a Cajal Retzius cell? It is useful to take into account how difficult it is to arrive at an answer:

- (1) Cajal, Retzius, Koelliker, Verati, and others disagreed on the identity of CR cells and changed their opinion on this matter.
- (2) Cajal first described horizontal cells in layer I of postnatal animals, while Retzius described horizontal cells in human fetuses.
- (3) Not all the cells described by Cajal or Retzius were horizontal.
- (4) Cajal described multiple morphological categories and sub-categories and classifications for cells in layer I (not included in this manuscript).
- (5) The cells described by Cajal and Retzius in their original work could be viewed as similar or different, based on morphological criteria.
- (6) Original studies used the Golgi method as a principal approach for cell labeling, while current research often uses immunohistochemistry.

- (7) Only the Golgi method, rarely used today, labels the entire dendritic arbor of MZ/layer I cells.
- (8) The Golgi method may not label all cell types in the MZ or layer I.
- (9) Horizontally oriented cells in the MZ of the developing brain will include migrating interneurons originating from the ganglionic eminences, and microglia. Therefore the termination of interneuron migration, and the dispersal of microglia contribute to the decreased cell number in layer I during the postnatal period. These normal developmental processes are distinct from the cell death of CR cells.
- (10) Neurons in MZ/layer I originate from a variety of anatomical regions.
- (11) The adult cerebral cortex also has Reelin-expressing horizontally oriented neurons.
- (12) CR cells express pallial and subpallial markers.
- (13) Reelin is the main protein used to label CR cells. However, Reelin does not label all horizontal neurons in layer I, while at the same time labels cells with a morphology matching that of the short axon cells described by Cajal.
- (14) The function of adult layer I cells has not been completely determined.
- (15) Cajal proposed that both horizontal cells and short axon cells serve similar connective functions.

To avoid discrepancy due to the heterogeneous nature of cell types in layer I based on measures such as morphology, we propose to use the term “CR cell” to describe a *class* of cells, rather than a single cell type. In the same way that the term “pyramidal neuron” refers to a class of cortical neurons that includes distinct subtypes, we propose to use the term ‘CR cell’ to refer to a class of neurons that includes multiple subtypes based on specific cell morphology, location, age, origin, and marker expression. In this scheme, the term “CR cell” will describe any Reelin+ neuron present in the developing MZ and the postnatal/adult layer I of the cerebral cortex. The term “CR cell” will not include the pioneer-neurons of Fairén that emit the earliest descending axonal projection from the cerebral cortex to the subpallium (Morante-Oria et al., 2003), nor will it include migrating interneurons derived from the ganglionic eminences. This approach will create a single class of neurons, CR cells, that comprise multiple heterogeneous subtypes based on molecular and morphological considerations.

## ACKNOWLEDGMENTS

The authors thank Anna Kreutz, Bernhard Kreutz, and Uwe Rossbach for their translation of original German manuscripts into English. Funding for this manuscript was provided by the National Institutes of Health grants MH094681 to Verónica Martínez-Cerdeño, and MH101188 to Stephen C. Noctor, and by the Shriners hospitals.

## REFERENCES

- Abellan, A., Menuet, A., Dehay, C., Medina, L., and Retaux, S. (2010). Differential expression of LIM-homeodomain factors in Cajal–Retzius cells of primates, rodents, and birds. *Cereb. Cortex* 20, 1788–1798. doi: 10.1093/cercor/bhp242
- Abraham, H., and Meyer, G. (2003). Reelin-expressing neurons in the postnatal and adult human hippocampal formation. *Hippocampus* 13, 715–727. doi: 10.1002/hipo.10125

- Abraham, H., Perez-Garcia, C. G., and Meyer, G. (2004). p73 and Reelin in Cajal–Retzius cells of the developing human hippocampal formation. *Cereb. Cortex* 14, 484–495. doi: 10.1093/cercor/bhh010
- Alcantara, S., Ruiz, M., D'Arcangelo, G., Ezan, F., de Lecea, L., Curran, T., et al. (1998). Regional and cellular patterns of reelin mRNA expression in the forebrain of the developing and adult mouse. *J. Neurosci.* 18, 7779–7799.
- Anstötz, M., Cosgrove, K. E., Hack, I., Mugnaini, E., Maccaferri, G., and Lubke, J. H. (2013). Morphology, input–output relations and synaptic connectivity of Cajal–Retzius cells in layer I of the developing neocortex of CXCR4-EGFP mice. *Brain Struct. Funct.* doi: 10.1007/s00429-013-0627-2 [Epub ahead of print].
- Bernier, B., Bar, I., Pieau, C., Lambert De Rouvroit, C., and Goffinet, A. M. (1999). Reelin mRNA expression during embryonic brain development in the turtle *Emys orbicularis*. *J. Comp. Neurol.* 413, 463–479. doi: 10.1002/(SICI)1096-9861(19991025)413:3<463::AID-CNE8>3.0.CO;2-F
- Bielle, F., Griveau, A., Narboux-Neme, N., Vigneau, S., Sigrist, M., Arber, S., et al. (2005). Multiple origins of Cajal–Retzius cells at the borders of the developing pallium. *Nat. Neurosci.* 8, 1002–1012. doi: 10.1038/nn1511
- Bradford, R., Parnavelas, J. G., and Lieberman, A. R. (1977). Neurons in layer I of the developing occipital cortex of the rat. *J. Comp. Neurol.* 176, 121–132. doi: 10.1002/cne.901760108
- Cabrera-Socorro, A., Hernandez-Acosta, N. C., Gonzalez-Gomez, M., and Meyer, G. (2007). Comparative aspects of p73 and Reelin expression in Cajal–Retzius cells and the cortical hem in lizard, mouse and human. *Brain Res.* 1132, 59–70. doi: 10.1016/j.brainres.2006.11.015
- Ceci, M. L., Lopez-Mascaraque, L., and de Carlos, J. A. (2010). The influence of the environment on Cajal–Retzius cell migration. *Cereb. Cortex* 20, 2348–2360. doi: 10.1093/cercor/bhp305
- Chowdhury, T. G., Jimenez, J. C., Bomar, J. M., Cruz-Martin, A., Cattle, J. P., and Portera-Cailliau, C. (2010). Fate of Cajal–Retzius neurons in the postnatal mouse neocortex. *Front. Neuroanat.* 4:10. doi: 10.3389/neuro.05.010.2010
- Connel, J. L. (1941). *The Postnatal Development of the Human Cerebral Cortex*. Cambridge: Harvard University Press, 97–128.
- Connel, J. L. (1947). *The Postnatal Development of the Human Cerebral Cortex. The Cortex of a Three-Month Infant*. Cambridge: Harvard University Press, 132–148. doi: 10.4159/harvard.9780674187672
- Connel, J. L. (1951). *The Postnatal Development of the Human Cerebral Cortex. The Cortex of a Six-Month Infant*. Cambridge Harvard University Press, 158–177.
- Cosgrove, K. E., and Maccaferri, G. (2012). mGlu1alpha-dependent recruitment of excitatory GABAergic input to neocortical Cajal–Retzius cells. *Neuropharmacology* 63, 486–493. doi: 10.1016/j.neuropharm.2012.04.025
- Cunningham, C. L., Martinez-Cerdeno, V., and Noctor, S. C. (2013). Microglia regulate the number of neural precursor cells in the developing cerebral cortex. *J. Neurosci.* 33, 4216–4233. doi: 10.1523/JNEUROSCI.3441.12.2013
- D'Arcangelo, G., Homayouni, R., Keshvara, L., Rice, D. S., Sheldon, M., and Curran, T. (1999). Reelin is a ligand for lipoprotein receptors. *Neuron* 24, 471–479. doi: 10.1016/S0896-6273(00)80860-0
- DeFelipe, J., Lopez-Cruz, P. L., Benavides-Piccione, R., Bielza, C., Larranaga, P., Anderson, S., et al. (2013). New insights into the classification and nomenclature of cortical GABAergic interneurons. *Nat. Rev. Neurosci.* 14, 202–216. doi: 10.1038/nrn3444
- Derer, P., and Derer, M. (1990). Cajal–Retzius cell ontogenesis and death in mouse brain visualized with horseradish peroxidase and electron microscopy. *Neuroscience* 36, 839–856. doi: 10.1016/0306-4522(90)90027-2
- Frotscher, M., Chai, X., Bock, H. H., Haas, C. A., Forster, E., and Zhao, S. (2009). Role of Reelin in the development and maintenance of cortical lamination. *J. Neural Transm.* 116, 1451–1455. doi: 10.1007/s00702-009-0228-7
- Goffinet, A. M., Bar, I., Bernier, B., Trujillo, C., Raynaud, A., and Meyer, G. (1999). Reelin expression during embryonic brain development in lacertilian lizards. *J. Comp. Neurol.* 414, 533–550. doi: 10.1002/(SICI)1096-9861(19991129)414:4<533::AID-CNE8>3.0.CO;2-V
- Griveau, A., Borello, U., Causseret, E., Tissir, F., Boggetto, N., Karaz, S., et al. (2010). A novel role for Dbx1-derived Cajal–Retzius cells in early regionalization of the cerebral cortical neuroepithelium. *PLoS Biol.* 8:e1000440. doi: 10.1371/journal.pbio.1000440
- Grove, E. A., Tole, S., Limon, J., Yip, L., and Ragsdale, C. W. (1998). The hem of the embryonic cerebral cortex is defined by the expression of multiple Wnt genes and is compromised in Gli3-deficient mice. *Development* 125, 2315–2325.
- Gu, X., Liu, B., Wu, X., Yan, Y., Zhang, Y., Wei, Y., et al. (2011). Inducible genetic lineage tracing of cortical hem derived Cajal–Retzius cells reveals novel properties. *PLoS ONE* 6:e28653. doi: 10.1371/journal.pone.0028653
- Hevner, R. F., Neogi, T., Englund, C., Daza, R. A., and Fink, A. (2003). Cajal–Retzius cells in the mouse: transcription factors, neurotransmitters, and birthdays suggest a pallial origin. *Brain Res. Dev. Brain Res.* 141, 39–53. doi: 10.1016/S0165-3806(02)00641-7
- Hevner, R. F., Shi, L., Justice, N., Hsueh, Y., Sheng, M., Smiga, S., et al. (2001). Tbr1 regulates differentiation of the preplate and layer 6. *Neuron* 29, 353–366. doi: 10.1016/S0896-6273(01)00211-2
- Hodge, R. D., Garcia, A. J. III, Elsen, G. E., Nelson, B. R., Mussar, K. E., Reiner, S. L., et al. (2013). Tbr2 expression in Cajal–Retzius cells and intermediate neuronal progenitors is required for morphogenesis of the dentate gyrus. *J. Neurosci.* 33, 4165–4180. doi: 10.1523/JNEUROSCI.4185-12.2013
- Howell, B. W., Herrick, T. M., Hildebrand, J. D., Zhang, Y., and Cooper, J. A. (2000). Dab1 tyrosine phosphorylation sites relay positional signals during mouse brain development. *Curr. Biol.* 10, 877–885. doi: 10.1016/S0960-9822(00)00608-4
- Huntley, G. W., and Jones, E. G. (1990). Cajal–Retzius neurons in developing monkey neocortex show immunoreactivity for calcium binding proteins. *J. Neurocytol.* 19, 200–212. doi: 10.1007/BF01217298
- Imamoto, K., Karasawa, N., Isomura, G., and Nagatsu, I. (1994). Cajal–Retzius neurons identified by GABA immunohistochemistry in layer I of the rat cerebral cortex. *Neurosci. Res.* 20, 101–105. doi: 10.1016/0168-0102(94)90027-2
- Ina, A., Sugiyama, M., Konno, J., Yoshida, S., Ohmomo, H., Nogami, H., et al. (2007). Cajal–Retzius cells and subplate neurons differentially express vesicular glutamate transporters 1 and 2 during development of mouse cortex. *Eur. J. Neurosci.* 26, 615–623. doi: 10.1111/j.1460-9568.2007.05703.x
- Koelliker, A. (1896). *Handbuch der Gewebelehre des Menschen, Vol. II. Nervensystem des Menschen und der Tiere*. Leipzig: Engelmann, 659–663.
- Kriegstein, A. R., and Noctor, S. C. (2004). Patterns of neuronal migration in the embryonic cortex. *Trends Neurosci.* 27, 392–399. doi: 10.1016/j.tins.2004.05.001
- Kuo, G., Arnaud, L., Kronstad-O'Brien, P., and Cooper, J. A. (2005). Absence of Fyn and Src causes a reeler-like phenotype. *J. Neurosci.* 25, 8578–8586. doi: 10.1523/JNEUROSCI.1656-05.2005
- Luhmann, H. J., Kirischuk, S., Sinning, A., and Kilb, W. (2014). Early GABAergic circuitry in the cerebral cortex. *Curr. Opin. Neurobiol.* 26C, 72–78. doi: 10.1016/j.conb.2013.12.014
- Marin-Padilla, M. (1990). Three-dimensional structural organization of layer I of the human cerebral cortex: a Golgi study. *J. Comp. Neurol.* 299, 89–105. doi: 10.1002/cne.902990107
- Marin-Padilla, M. (1998). Cajal–Retzius cells and the development of the neocortex. *Trends Neurosci.* 21, 64–71. doi: 10.1016/S0166-2236(97)01164-8
- Marin-Padilla, M., and Marin-Padilla, T. M. (1982). Origin, prenatal development and structural organization of layer I of the human cerebral (motor) cortex. A Golgi study. *Anat. Embryol.* 164, 161–206. doi: 10.1007/BF00318504
- Martinez-Cerdeno, V., and Clasca, F. (2002). Reelin immunoreactivity in the adult neocortex: a comparative study in rodents, carnivores, and non-human primates. *Brain Res. Bull.* 57, 485–488. doi: 10.1016/S0361-9230(01)00718-3
- Martinez-Cerdeno, V., Galazo, M. J., Cavada, C., and Clasca, F. (2002). Reelin immunoreactivity in the adult primate brain: intracellular localization in projecting and local circuit neurons of the cerebral cortex, hippocampus and subcortical regions. *Cereb. Cortex* 12, 1298–1311. doi: 10.1093/cercor/12.12.1298
- Martinez-Cerdeno, V., Galazo, M. J., and Clasca, F. (2003). Reelin-immunoreactive neurons, axons, and neuropil in the adult ferret brain: evidence for axonal secretion of reelin in long axonal pathways. *J. Comp. Neurol.* 463, 92–116. doi: 10.1002/cne.10748
- Martinez-Galan, J. R., Moncho-Bogani, J., and Caminos, E. (2014). Expression of calcium-binding proteins in layer I reelin-immunoreactive cells during rat and mouse neocortical development. *J. Histochem. Cytochem.* 62, 60–69. doi: 10.1369/0022155413509381

- Meyer, G. (2010). Building a human cortex: the evolutionary differentiation of Cajal–Retzius cells and the cortical hem. *J. Anat.* 217, 334–343. doi: 10.1111/j.1469-7580.2010.01266.x
- Meyer, G., and Goffinet, A. M. (1998). Prenatal development of reelin-immunoreactive neurons in the human neocortex. *J. Comp. Neurol.* 397, 29–40. doi: 10.1002/(SICI)1096-9861(19980720)397:1<29::AID-CNE3>3.0.CO;2-K
- Meyer, G., Goffinet, A. M., and Fairen, A. (1999). What is a Cajal–Retzius cell? A reassessment of a classical cell type based on recent observations in the developing neocortex. *Cereb. Cortex* 9, 765–775. doi: 10.1093/cercor/9.8.765
- Meyer, G., and Gonzalez-Hernandez, T. (1993). Developmental changes in layer I of the human neocortex during prenatal life: a DiI-tracing and AChE and NADPH-d histochemistry study. *J. Comp. Neurol.* 338, 317–336. doi: 10.1002/cne.903380302
- Meyer, G., Perez-Garcia, C. G., Abraham, H., and Caput, D. (2002). Expression of p73 and Reelin in the developing human cortex. *J. Neurosci.* 22, 4973–4986.
- Meyer, G., Soria, J. M., Martínez-Galan, J. R., Martín-Clemente, B., and Fairen, A. (1998). Different origins and developmental histories of transient neurons in the marginal zone of the fetal and neonatal rat cortex. *J. Comp. Neurol.* 397, 493–518. doi: 10.1002/(SICI)1096-9861(19980810)397:4<493::AID-CNE4>3.0.CO;2-X
- Meyer, G., and Wahle, P. (1999). The paleocortical ventricle is the origin of reelin-expressing neurons in the marginal zone of the foetal human neocortex. *Eur. J. Neurosci.* 11, 3937–3944. doi: 10.1046/j.1460-9568.1999.00818.x
- Molnar, Z., Metin, C., Stoykova, A., Tarabykin, V., Price, D. J., Francis, F., et al. (2006). Comparative aspects of cerebral cortical development. *Eur. J. Neurosci.* 23, 921–934. doi: 10.1111/j.1460-9568.2006.04611.x
- Morante-Oria, J., Carleton, A., Ortino, B., Kremer, E. J., Fairen, A., and Lledo, P. M. (2003). Subpallial origin of a population of projecting pioneer neurons during corticogenesis. *Proc. Natl. Acad. Sci. U.S.A.* 100, 12468–12473. doi: 10.1073/pnas.1633692100
- Mykhar, O., Unichenko, P., and Kirischuk, S. (2011). GABAergic projections from the subplate to Cajal–Retzius cells in the neocortex. *Neuroreport* 22, 525–529. doi: 10.1097/WNR.0b013e32834888a4
- Perez-García, C. G., Gonzalez-Delgado, F. J., Suarez-Sola, M. L., Castro-Fuentes, R., Martín-Trujillo, J. M., Ferrer-Torres, R., et al. (2001). Reelin-immunoreactive neurons in the adult vertebrate pallium. *J. Chem. Neuroanat.* 21, 41–51. doi: 10.1016/S0891-0618(00)00104-6
- Pesold, C., Liu, W. S., Guidotti, A., Costa, E., and Caruncho, H. J. (1999). Cortical bitufted, horizontal, and Martinotti cells preferentially express and secrete reelin into perineuronal nets, nonsynaptically modulating gene expression. *Proc. Natl. Acad. Sci. U.S.A.* 96, 3217–3222. doi: 10.1073/pnas.96.6.3217
- Ramon y Cajal, S. (1890). Sobre la existencia de células nerviosas especiales en la primera capa de las circunvoluciones cerebrales. *Gaceta Medica Catalana* 13, 23.
- Ramon y Cajal, S. (1895). *Histology of the Nervous System*, trans. Swanson, N. and Swanson, L. W. Oxford: Oxford University Press, 805.
- Ramon y Cajal, S. (1896). Estructura del Encéfalo del camaleón. *Revista Trimestral Micrográfica* 1, 131–167.
- Ramon y Cajal, S. (1897). Las células de cilindro-eje corto de la capa molecular del cerebro. *Revista Trimestral Micrográfica* 2, 153–162.
- Ramon y Cajal, S. (1899). Estudios sobre la corteza cerebral humana I: corteza visual. *Rev. Trim. Micrográf. Madrid* 4, 117–200.
- Ramon y Cajal, S. (1911). *Histologie du Systeme Nerveux de l'Homme et des Vertébrés*, Vol. 11. Paris: Maloine, 519–646 (Reprinted in 1995 by Oxford University Press, New York).
- Ramos-Moreno, T., Galazo, M. J., Porrero, C., Martínez-Cerdeno, V., and Clasca, F. (2006). Extracellular matrix molecules and synaptic plasticity: immunomapping of intracellular and secreted Reelin in the adult rat brain. *Eur. J. Neurosci.* 23, 401–422. doi: 10.1111/j.1460-9568.2005.04567.x
- Retzius, G. (1893). Die Cajal'schen Zellen der Grosshirnrinde beim Menschen und bei Säugerthieren. *Biologisches Untersuchungen* 5:1.
- Retzius, G. (1894). Weitere beitrage zur kenntniss der Cajal'schen Zellen der grosshirnrinde des menschen. *Biol. Unters* 6, 29–34.
- Rice, D. S., and Curran, T. (2001). Role of the reelin signaling pathway in central nervous system development. *Annu. Rev. Neurosci.* 24, 1005–1039. doi: 10.1146/annurev.neuro.24.1.1005
- Rice, D. S., Sheldon, M., D'Arcangelo, G., Nakajima, K., Goldowitz, D., and Curran, T. (1998). Disabled-1 acts downstream of Reelin in a signaling pathway that controls laminar organization in the mammalian brain. *Development* 125, 3719–3729.
- Sava, B. A., David, C. S., Teissier, A., Pierani, A., Staiger, J. F., Luhmann, H. J., et al. (2010). Electrophysiological and morphological properties of Cajal–Retzius cells with different ontogenetic origins. *Neuroscience* 167, 724–734. doi: 10.1016/j.neuroscience.2010.02.043
- Soda, T., Nakashima, R., Watanabe, D., Nakajima, K., Pastan, I., and Nakanishi, S. (2003). Segregation and coactivation of developing neocortical layer 1 neurons. *J. Neurosci.* 23, 6272–6279.
- Super, H., Soriano, E., and Uylings, H. B. (1998). The functions of the preplate in development and evolution of the neocortex and hippocampus. *Brain Res. Brain Res. Rev.* 27, 40–64. doi: 10.1016/S0165-0173(98)00005-8
- Tagiguchi-Hayashi, K., Sekiguchi, M., Ashigaki, S., Takamatsu, M., Hasegawa, H., Suzuki-Migishima, R., et al. (2004). Generation of reelin-positive marginal zone cells from the caudomedial wall of telencephalic vesicles. *J. Neurosci.* 24, 2286–2295. doi: 10.1523/JNEUROSCI.4671-03.2004
- Tissir, F., and Goffinet, A. M. (2003). Reelin and brain development. *Nat. Rev. Neurosci.* 4, 496–505. doi: 10.1038/nrn1113
- Tissir, F., Lambert De Rouvroit, C., Sire, J. Y., Meyer, G., and Goffinet, A. M. (2003). Reelin expression during embryonic brain development in *Crocodylus niloticus*. *J. Comp. Neurol.* 457, 250–262. doi: 10.1002/cne.10573
- Tissir, F., Ravni, A., Achouri, Y., Riethmacher, D., Meyer, G., and Goffinet, A. M. (2009). DeltaNp73 regulates neuronal survival in vivo. *Proc. Natl. Acad. Sci. U.S.A.* 106, 16871–16876. doi: 10.1073/pnas.0903191106
- Trommsdorff, M., Gotthardt, M., Hiesberger, T., Shelton, J., Stockinger, W., Nimpf, J., et al. (1999). Reeler/Disabled-like disruption of neuronal migration in knockout mice lacking the VLDL receptor and ApoE receptor 2. *Cell* 97, 689–701. doi: 10.1016/S0092-8674(00)80782-5
- Yoshida, M., Assimacopoulos, S., Jones, K. R., and Grove, E. A. (2006). Massive loss of Cajal–Retzius cells does not disrupt neocortical layer order. *Development* 133, 537–545. doi: 10.1242/dev.02209
- Zecevic, N., and Rakic, P. (2001). Development of layer I neurons in the primate cerebral cortex. *J. Neurosci.* 21, 5607–5619.

**Conflict of Interest Statement:** The authors declare that the research was conducted in the absence of any commercial or financial relationships that could be construed as a potential conflict of interest.

Received: 12 March 2014; accepted: 29 May 2014; published online: 17 June 2014.

Citation: Martínez-Cerdeño V and Noctor SC (2014) Cajal, Retzius, and Cajal–Retzius cells. *Front. Neuroanat.* 8:48. doi: 10.3389/fnana.2014.00048

This article was submitted to the journal *Frontiers in Neuroanatomy*.

Copyright © 2014 Martínez-Cerdeño and Noctor. This is an open-access article distributed under the terms of the Creative Commons Attribution License (CC BY). The use, distribution or reproduction in other forums is permitted, provided the original author(s) or licensor are credited and that the original publication in this journal is cited, in accordance with accepted academic practice. No use, distribution or reproduction is permitted which does not comply with these terms.