

UCLA

Contemporary Music Score Collection

Title

音靈法 (Otodamahō)

Permalink

<https://escholarship.org/uc/item/83t4h31r>

Author

Monier, Yannick

Publication Date

2020

音靈法

Otodamahō

For piano, violin (with wind chimes) and cello

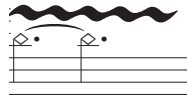
Duration : 6-7 minutes

Composed by Yannick Monier (2018)

Performance notes

Violin

The violinist should have wind chimes (if not, any other high chimes is a possibility) placed nearby to be easily accessible.



: very slow vibrato with a quarter tone span on each side



: mute strings with the left hand

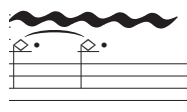
Cello



: bow on the bridge



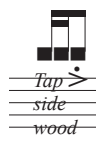
: knock with knuckles on the back wood



: very slow vibrato with a quarter tone span on each side



: mute strings with the left hand



: tap the side wood



: "pitchless" glissando with the left hand slightly pressing with the nails

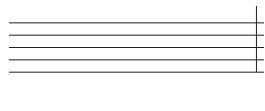


: note as high as possible

Piano



: knock the wood with knuckles



: hit the soft pedal loudly to create a heartbeat effect

音靈法 (Otodamahō)

Yannick Monier

rubato, around ♩ = 42

flautando ●
(sul tasto —
light press.)

circular bowing -----|

let ring

Violin

Cello

Piano

mf *pp* *ff*

Bow on the bridge

pp *pp*

f *f* *f* *f*

p *p*

Ped.

//

Vln.

Vc.

Pno.

pp *p*

ff *f* *p* *p*

f *f* *f* *f*

p *p* *p* *p*

RH *f*

(Pedal continues)

RH *f*

Knock with knuckles on the back wood

circular bowing - |

very slow vibrato with a 1/4 tone freq. diff.

Vln. *mp p mp ppp f ppp p pp* *harm. gliss.*

Vc. *p f mp mf* *Bow on the bridge* *Slap with palms on the side wood*

Pno. *p p mf f* *8va* *RH*

//

Vln. *p p p mf p* *very slow vibrato with a 1/4 tone freq. diff.*

Vc. *p mf p p f p p* *sul ponti.* *toward tasto* *slow circular bowing -* *harm. gliss.* *pizz. tremolo on muted str. at the octave* *arco (high note Sul G)* *col legno battuto gliss.*

Pno. *p p mp f* *8va* *RH*

18

Vln. *slow port. Gliss.* *I* *p < mp > p* *mp* *p* *sul ponticello*

Vc. *sim* *Bow on the bridge* *p* *pitchless gliss. with nails* *mf* *Tap side wood*

Pno. *mf* *mp* *mp* *mf* *f* *p* *p* *p* *p* *δva-*

//

22

Vln. *slow port. Gliss.* *I* *fp* *ppp* *f* *p* *ricochet* *p* *mf* *p*

Vc. *(high note Sul G)* *col legno battuto gliss.* *sim.* *I* *p* *f* *sul ponticello* *mp* *p*

Pno. *Roll* *knock the wood with knuckles* *p* *mf* *f* *mf* *p* *δva-*

RH *f*

Vln. *p* *pp < f > p* *fp*

Vc. *mp* *pp < f > p* *pp < f*

Pno. *f* *pp < mf > p* *mf* *pp < f*

p crescendo

Annotations: *sul tasto*, *slow port. Gliss.*, *closer to the middle*, *col legno battuto gliss.*, *Sul C*, *sim.*, *(high note Sul C)*, *sul tasto*, *muted gliss. light press. L.H. moving*, *knock the wood with knuckles*, *(Roll the chord)*

//

Vln. *molto vib.* *pp* *fp* *pp fp* *pp mp* *no vibrato*

Vc. *fp < f > p* *fp < f > p* *f > p mp*

Pno. *pp* *pp < f > pp* *pp < mf > pp* *f* *rit.* *mp*

RH *mf*

Annotations: *closer del ponticello*, *sul ponticello*, *closer to the middle*, *closer del ponticello*, *sul ponticello*

Slow irreg.
Circular bow.
(♩.=♩) *LH mute str. at octave*

34

Vln.

W. Ch.

Vc.

Pno.

pp

pp *mf* *p*

pp *mf* *p*

sim.

sim. Ped. Continues

RH *p*

//

flautando
(light bowing
sul tasto) II

38

Vln.

W. Ch.

Vc.

Pno.

p *mp* *pp* *f*

mp

mp *mf*

p

RH *p*

Bow on the bridge

Knock with knuckles on the side wood

42

Vln. *I*

W. Ch.

Vc.

Pno.

p *mp* *pp* *f* *p*

pp *f* *pp* *p* *pp*

III V IV Har Gliss III V

//

46

Vln.

W. Ch.

Vc.

Pno.

mp *p* *ff* *subito mf* *f* *p* *sfz*

mp

Bow on the bridge Sul Ponticello

ff *f* *pp* *mf*

8va *8va* *mp*

Ricochet martelé Ricochet

Vln. *pp* *mf* *p* *sfz* *p* *mp* *p* *mp* *p* *mp* *p* *mp*

Vc. *p* *f* *p* *f* *pp* *f* *pp* *f* *p*

Pno. *f* *p* *mf* *p* *mf* *p*

High note Sul D
Sul Ponticello --|
Scratch Tone
Gliss
Ricochet
sul ponticello
 I----- II III----- IV
Sul Tasto *Sul Pont.* *Sul Tasto*

Vln. *p* *rit.* *pp* *ff* *pp* *ff*

Vc. *p* *rit.* *pp* *ff* *pp*

Pno. *mf* *p* *pp*

Sul Tasto *Sul Pont.*
very slow vibrato with a 1/4 tone freq. diff. *normale*
 I III
Sul I Pont. *Middle* *Sul Tasto* *normale* III
very slow vibrato with a 1/4 tone freq. diff.

Vln. *ppp* *f* *ppp* *f* *ppp* *mf* *pp* *f* G.P.

Vc. *ff* *pp* *ff* *pp* *mf* *ppp* *mf* *pp* *f* G.P.

Pno. *pp* G.P.

//

Slow irreg.

Circular bow. btw all 4 str. rit. poco a poco

LH mute str. at oct.

Vln. *irr. between ppp and mf*

Vc. *irr. between ppp and mf*

Pno. *pppp (as soft as possible) rit. poco a poco*

pppp (as soft as possible)

Ped.

hit the soft pedal loudly
to create a heartbeat

