

# UC Berkeley

## UC Berkeley Previously Published Works

### Title

CD46 targeted  $^{212}\text{Pb}$  alpha particle radioimmunotherapy for prostate cancer treatment

### Permalink

<https://escholarship.org/uc/item/85s37870>

### Journal

Journal of Experimental & Clinical Cancer Research, 42(1)

### ISSN

0392-9078

### Authors

Li, Jun  
Huang, Tao  
Hua, Jun  
[et al.](#)

### Publication Date

2023

### DOI

10.1186/s13046-023-02636-x

Peer reviewed

RESEARCH

Open Access



# CD46 targeted $^{212}\text{Pb}$ alpha particle radioimmunotherapy for prostate cancer treatment

Jun Li<sup>1,2†</sup>, Tao Huang<sup>1†</sup>, Jun Hua<sup>1,3</sup>, Qiong Wang<sup>4,5</sup>, Yang Su<sup>6</sup>, Ping Chen<sup>1,2</sup>, Scott Bidlingmaier<sup>6</sup>, Allan Li<sup>6</sup>, Zhongqiu Xie<sup>5</sup>, Anil P. Bidkar<sup>7</sup>, Sui Shen<sup>8</sup>, Weibin Shi<sup>1</sup>, Youngho Seo<sup>7,9</sup>, Robert R. Flavell<sup>7,9</sup>, Daniel Gioeli<sup>10,11</sup>, Robert Dreicer<sup>11,12</sup>, Hui Li<sup>5,11</sup>, Bin Liu<sup>6,9\*</sup> and Jiang He<sup>1,11\*</sup>

## Abstract

We recently identified CD46 as a novel prostate cancer cell surface antigen that shows lineage independent expression in both adenocarcinoma and small cell neuroendocrine subtypes of metastatic castration resistant prostate cancer (mCRPC), discovered an internalizing human monoclonal antibody YS5 that binds to a tumor selective CD46 epitope, and developed a microtubule inhibitor-based antibody drug conjugate that is in a multi-center phase I trial for mCRPC (NCT03575819). Here we report the development of a novel CD46-targeted alpha therapy based on YS5. We conjugated  $^{212}\text{Pb}$ , an in vivo generator of alpha-emitting  $^{212}\text{Bi}$  and  $^{212}\text{Po}$ , to YS5 through the chelator TCMC to create the radioimmunoconjugate,  $^{212}\text{Pb}$ -TCMC-YS5. We characterized  $^{212}\text{Pb}$ -TCMC-YS5 in vitro and established a safe dose in vivo. We next studied therapeutic efficacy of a single dose of  $^{212}\text{Pb}$ -TCMC-YS5 using three prostate cancer small animal models: a subcutaneous mCRPC cell line-derived xenograft (CDX) model (subcu-CDX), an orthotopically grafted mCRPC CDX model (ortho-CDX), and a prostate cancer patient-derived xenograft model (PDX). In all three models, a single dose of 0.74 MBq (20  $\mu\text{Ci}$ )  $^{212}\text{Pb}$ -TCMC-YS5 was well tolerated and caused potent and sustained inhibition of established tumors, with significant increases of survival in treated animals. A lower dose (0.37 MBq or 10  $\mu\text{Ci}$   $^{212}\text{Pb}$ -TCMC-YS5) was also studied on the PDX model, which also showed a significant effect on tumor growth inhibition and prolongation of animal survival. These results demonstrate that  $^{212}\text{Pb}$ -TCMC-YS5 has an excellent therapeutic window in preclinical models including PDXs, opening a direct path for clinical translation of this novel CD46-targeted alpha radioimmunotherapy for mCRPC treatment.

**Keywords** CD46 epitope, Human monoclonal antibody, Targeted alpha therapy,  $^{212}\text{Pb}$ , Radioimmunotherapy, Prostate cancer, mCRPC, Prostate cancer patient-derived xenograft model

<sup>†</sup>Jun Li and Tao Huang contributed equally to this work.

\*Correspondence:

Bin Liu

bin.liu@ucsf.edu

Jiang He

jh6qv@virginia.edu

Full list of author information is available at the end of the article



## Significance

This study reports a novel CD46 targeted  $^{212}\text{Pb}$  alpha particle radioimmunotherapy,  $^{212}\text{Pb}$ -TCMC-YS5, that is well tolerated and shows potent anti-tumor activity (tumor growth inhibition and increase of animal survival) in vivo in three prostate cancer small animal models, i.e., a subcutaneous and an intraprostate orthotopic mCRPC cell line-derived xenograft models, and a prostate cancer patient-derived xenograft model. Given that YS5 is a clinical stage human antibody, this YS5-based  $^{212}\text{Pb}$  alpha particle therapy has potential of translation to the clinic for treatment of mCRPC patients.

## Introduction

Targeted radiotherapy with  $\alpha$ -particle emitting radionuclides is a promising approach to eliminate microscopic clusters of malignant cells due to the short path length (50–80  $\mu\text{m}$ ), high linear energy transfer (LET; 100 keV/ $\mu\text{m}$ ), and high relative biological effectiveness of  $\alpha$ -particles [1].  $\alpha$ -particles are known to induce cell death or proliferation arrest regardless of the cell's oxygen levels or sensitivity to chemotherapy or low LET (0.1–1 keV/ $\mu\text{m}$ ) radiotherapy treatment (external beam or  $\beta$ -particle radioimmunotherapy (RIT)).  $^{212}\text{Pb}$  has a half-life ( $t_{1/2}$ ) of 10.6 h that acts as an in vivo generator for the high LET  $\alpha$ -emitting daughter isotopes  $^{212}\text{Bi}$  with  $t_{1/2} = 60.6$  min and  $^{212}\text{Po}$  with  $t_{1/2} = 0.3$  microseconds. RIT with  $^{212}\text{Pb}$ -TCMC-trastuzumab has been clinically tested in ovarian cancer (local delivery by intra-peritoneal injection), which showed an antitumor activity and was well tolerated [2, 3]. Several preclinical studies and a recent clinical trial with  $^{212}\text{Pb}$  also showed promising therapeutic efficacy in different cancers [4–8].

Current efforts on targeted radio-ligand delivery in prostate cancer are centered on prostate-specific membrane antigen (PSMA) for the adenocarcinoma subtype using anti-PSMA antibodies (e.g.,  $^{177}\text{Lu}$ -J591 and  $^{225}\text{Ac}$ -J591), or radio-labeled small molecule PSMA-617 (e.g.,  $^{177}\text{Lu}$ -PSMA-617 [9, 10],  $^{225}\text{Ac}$ -PSMA-617 and  $^{212}\text{Pb}$ -PSMA-617 [11, 12]). In 2022, the FDA approved Pluvicto<sup>™</sup> ( $^{177}\text{Lu}$ -PSMA-617 or lutetium Lu 177 vipivotide tetraxetan) for the treatment of adult patients with PSMA-positive mCRPC who have been treated with androgen receptor pathway inhibition and taxane-based chemotherapy [13]. Despite these exciting development of PSMA targeted radio-ligand therapies, there are several limitations: (1) Radio-labeled PSMA-617 causes persistent xerostomia in patients, impairing quality of life [14]; (2) PSMA is heterogeneously expressed, especially in treatment emergent small cell neuroendocrine prostate cancer [15]. Not surprisingly, the success of current PSMA-targeted RITs is predicated on patient stratification using PET that detects high levels of PSMA

expression [10]. In addition, PSMA negative cases have been observed in prostate cancer patients [16, 17]. Thus there is a clinical need to identify and target new prostate cancer antigens to further improve outcome.

We have previously developed a non-gene expression-based approach to identify tumor cell surface epitopes including those formed by conformational change and post-translational modifications [18, 19]. We selected billion-member human antibody phage display libraries on patient samples with the aid of laser capture microdissection and identified tumor-binding antibodies following counter-selection on normal tissues [19]. Following further characterization including tissue specificity [19] and in vivo tumor targeting by imaging methods [20], we used these tumor selective antibodies to pull down target antigens and establish their molecular identity by mass spectrometry analysis. We discovered a new lineage independent cell surface antigen CD46 that is homogeneously expressed in both adenocarcinoma and small cell neuroendocrine subtypes [15]. We further developed a novel human monoclonal antibody YS5 that binds to a tumor selective epitope on CD46 and generated an antibody-drug conjugate (ADC) by conjugating auristatin derivatives to YS5 [15]. The ADC is in a multi-center phase I trial (NCT03575819) and a phase I/II combination trial (NCT05011188) for mCRPC. Our recent work also demonstrated that the  $^{89}\text{Zr}$  radiolabeled YS5 ( $^{89}\text{Zr}$ -DFO-YS5) can detect prostate cancer in vivo in both PSMA positive and PSMA negative mCRPC cell line xenograft (CDX) models and patient derived xenograft (PDX) models of both the adenocarcinoma and neuroendocrine subtypes [21], and a first-in-human study of this novel PET agent is ongoing in mCRPC patients (NCT05245006).

In this study, we report the synthesis and evaluation of tolerability and therapeutic efficacy of the  $^{212}\text{Pb}$ -radiolabeled human antibody YS5 ( $^{212}\text{Pb}$ -TCMC-YS5) in multiple prostate cancer small animal models, including subcutaneous CDX, intraprostate orthotopic CDX, and prostate cancer PDX models.

## Materials and methods

### Reagents and instrumentation

Hydrochloric acid (Trace Metal Grade) was purchased from Fisher Chemical. Pb-resin<sup>™</sup> (100–150  $\mu\text{m}$ ) was purchased from Eichrom Technologies LLC (Lisle, IL USA). The fully human CD46-targeted monoclonal antibody, YS5, was produced and purified as described previously [15]. The radiolabeling chelator, p-SCN-Bn-DFO (1-(4-isothiocyanatophenyl)-3-[6,17-dihydroxy-7,10,18,21-tetraoxo-27-(N-acetylhydroxylamino)-6,11,17,22-tetraazaheptaicosine]thiourea) (catalog No. B-705), and p-SCN-Bn-TCMC (S-2-(4-Isouthiocyanatobenzyl)-1,4,7,10-tetraaza-1,4,7,10-

tetra(2-carbamoylmethyl)cyclododecane) (catalog No. B-1005) were purchased from Macrocyclics, Inc.  $^{89}\text{Zr}$  oxalate was purchased from the Cyclotron Laboratory at University of Wisconsin, Madison (Madison, WI). The  $^{224}\text{Ra}/^{212}\text{Pb}$  generators used for these studies were purchased through the Isotopes Program, US Department of Energy, Oak Ridge National Laboratory (ORNL; Oak Ridge, TN USA). All other chemical reagents and materials were the highest grade available from Sigma-Aldrich and used as received without further purification (unless otherwise described). Radioactivity measurements of samples from the in vitro and in vivo experiments were performed on a calibrated Capintec CRC<sup>®</sup>-55tR Dose Calibrator (Florham Park, NJ) with dial setting at 101 or 158 at equilibrium, or the calibrated Hidex Automatic Gamma Counters using an energy window centered on the main gamma peak from  $^{212}\text{Pb}$  at 238.6 keV. Radioactivity analyses were corrected for radioactive decay. (Note: Gamma counters are used for measuring lower activity levels in cell and biodistribution studies; dose calibrators are mostly used for assessing moderate-high activity levels. Different models of dose calibrators differ with respect to chamber gas pressure, chamber wall thickness and material, resulting in different output responses, especially for  $^{212}\text{Pb}$  in equilibrium with progeny. It is recommended to verify the validity of the dial setting on each system as described by Napoli et al. [22] and follow the manufacturer's instruction). Size-exclusion HPLC were performed for radiolabeled YS5 on Agilent Technologies 1260 Infinity system (Santa Clara, CA, USA) equipped with the software, Laura, from PETLablogic Inc. (LabLogic Systems, Inc., Tampa, FL, USA), Zenix-C-SEC-300 column (3  $\mu\text{m}$ , 300  $\text{Å}$ ,  $4.6 \times 300$  mm), UV detector, and a Flow-Ram radio-HPLC detector (NaI detector). UV absorbance for the TCMC assay was measured on a Nanodrop Spectrophotometer (Thermo Scientific Inc., Waltham, USA).

### **$^{89}\text{Zr}$ radiolabeling of YS5**

Conjugation of YS5 with the chelator DFO and subsequent  $^{89}\text{Zr}$  labeling of DFO-YS5 were performed as described [21].

### **$^{212}\text{Pb}$ radiolabeling of YS5**

YS5 was first conjugated with the bi-functional chelator 2-(4-isothiocyanatobenzyl)-1,4,7,10-tetraaza-1,4,7,10-tetra-(2-carbamoylmethyl)-cyclododecane (TCMC; Macrocyclics, Plano, TX) at the molar ratio of TCMC/YS5 at 10:1. The average TCMC chelator/mAb ratios were determined by a spectrophotometric assay [23].  $^{212}\text{Pb}$  radiolabeling of YS5-TCMC and purification of the  $^{212}\text{Pb}$ -TCMC-YS5 were performed as previously described [24] with modifications. Briefly,  $^{212}\text{Pb}$  was

eluted with 2 M HCl from the  $^{224}\text{Ra}$ - $^{212}\text{Pb}$  generator and pre-concentrated by passing a column loaded with the Pb-resin. Following the pre-concentration step, about  $7.4 \times 10^7$  Bq (2 mCi) to  $1.85 \times 10^8$  Bq (5 mCi)  $^{212}\text{Pb}^{2+}$  was eluted from the Pb-resin column into a reaction vessel with pH=6 NaOAc buffer as the radiolabeling reaction. The reaction vessel was pre-loaded with 200  $\mu\text{g}$  to 500  $\mu\text{g}$  YS5-TCMC in 500  $\mu\text{L}$  pH=5.4 NaOAc buffer and 50  $\mu\text{L}$  human serum albumin (10 mg/ml) and the reaction vessel was heated at 37 °C for 1 h.  $^{212}\text{Pb}$ -TCMC-YS5 was purified by using a PD-10 column with 0.1 M phosphate buffer with human serum albumin (10 mg/ml) and used right after for in vitro and in vivo animal studies. Radiolabeling efficiency (the percentage of incorporated radionuclide from radiolabeling reaction) and radiochemical purity of  $^{212}\text{Pb}$ -YS5 was analyzed using size-exclusion HPLC using a Zenix-C-SEC-300 column (Sepax Technologies, Inc.) with 0.1 M phosphate buffer (pH 7.2) at the eluting rate of 1 ml/min. Fractions were collected and  $^{212}\text{Pb}$  activity was determined by a Capintec CRC<sup>®</sup>-55tR Dose Calibrator and the radioactivity recovery yield of all combined eluted fractions against injected radioactivity was calculated [22].

### **In vitro cell binding affinity**

The apparent  $K_D$  value of  $^{212}\text{Pb}$ -TCMC-YS5 binding to the CD46-expressing mCRPC cell line PC3 was determined by a saturation binding assay with concentrations at 5, 10, 25, 50, and 100 nM as previously described [20]. Radioactivity bound on tumor cells were measured on the calibrated Hidex Automatic Gamma Counters by using an energy window centered on the main gamma peak from  $^{212}\text{Pb}$  at 238.6 keV.

### **Animal subjects and husbandry**

CDX studies were performed using 5–7 week old male athymic nude mice (Nu/Nu Nude mice, Charles River, Wilmington, MA). PDX studies were performed using 6–8 weeks old male NSG mice (NOD/SCID/IL-2R $\gamma^{-/-}$ ) (The Jackson Laboratory, Bar Harbor, ME). Animal studies were approved by the University of Virginia Institutional Animal Care and Use Committee and performed in compliance with guidelines from the Public Health Service Policy and Animal Welfare Act of the United States.

### **In vivo $^{89}\text{Zr}$ -DFO-YS5 PET imaging and biodistribution studies**

Approximately 3–5 weeks after tumor implantation, animals with PC3 xenografts reaching 100 mm<sup>3</sup> in volume were anesthetized by isoflurane inhalation. For  $^{89}\text{Zr}$ -DFO-YS5 PET imaging, 3.70–5.55 MBq (100–150  $\mu\text{Ci}$ , 30  $\mu\text{g}/\text{mouse}$ ) of  $^{89}\text{Zr}$ -DFO-YS5 in saline was administered through the tail vein, and animals

were imaged at 24, 72, and 120 h post injection, with a 20-min acquisition time by using microPET/CT Albira Trimodal PET/SPECT/CT Scanner (Bruker Corporation). PET imaging data were acquired in list mode and reconstructed using Albira Software Suite provided by the manufacturer. The resulting image data were then normalized to the administered activity to parameterize images in terms of %IA/g. Imaging data were viewed and processed using an open source Amide software. CT images were acquired following PET, and the CT data were used for attenuation correction for PET reconstruction, and anatomic reference.

#### **Dose study of $^{212}\text{Pb}$ -TCMC-YS5**

To determine the safe dose for therapy study, a dose escalation study was performed in nude mice without tumor to determine toxicity. Groups of nude mice ( $n=5-7/\text{group}$ ) were given doses of  $^{212}\text{Pb}$ -TCMC-YS5 at 0, 0.185 MBq, 0.37 MBq, 0.74 MBq, and 1.85 MBq (0, 5, 10, 20, and 50  $\mu\text{Ci}$ ) per mouse. Mice were monitored for health status, signs of stress and body weight twice weekly. Mice were sacrificed when loss of body weight was more than 20%, or if the mice showed visible signs of distress, including lack of appetite, excessive lethargy, or formation of sores and rashes.

#### **Blood analysis for hematology and clinical chemistry**

To evaluate the potential toxicity of  $^{212}\text{Pb}$ -TCMC-YS5, hematological analysis and clinical chemistry were performed as reported [5]. CD-1 mice (Charles River Laboratories, Wilmington, MA) were administered with 0.74 MBq (20  $\mu\text{Ci}$ ) of  $^{212}\text{Pb}$ -TCMC-YS5 as study group. The control group received no treatment. Blood was collected via the orbital sinus into EDTA coated tubes and analyzed immediately using the Heska Element HT5 hematology analyzer (Barrie, Ontario, Canada). For blood chemistry, plasma was separated from blood by centrifugation (12,000 rpm, 10 min, at 4 °C) and was either studied immediately or stored at -80 °C for later analysis. Biomarkers for organ function such as albumin, blood urea nitrogen (BUN), creatinine, alanine aminotransferase (ALT) and aspartate aminotransferase (AST) were measured using enzyme-linked immunosorbent assay (ELISA) kits (ELISA kits for albumin, blood urea nitrogen, creatinine, alanine aminotransferase were purchased from MyBioSource, San Diego, CA; and ELISA kit for aspartate aminotransferase were purchased from Abcam, Boston, MA).

#### **In vivo $^{212}\text{Pb}$ -YS5 therapy studies in a subcutaneous PC3 xenograft model**

For the therapeutic study, mice bearing PC3 tumors about 100 mm<sup>3</sup> in volume were given a single i.v. dose

of  $^{212}\text{Pb}$ -TCMC-YS5 at 20  $\mu\text{Ci}$  (740 kBq) ( $n=5$ ) or the unlabeled YS5 antibody ( $n=7$ ) or no treatment ( $n=4$ ). Animal number per group was based on past experience with prostate cancer models, not power calculation. Graft failures (i.e., no palpable tumor) at the time of randomization were excluded from the study. Tumor dimensions were measured and recorded 3 times weekly with a digital caliper, and tumor volumes were calculated using the following modified ellipsoid equation: volume =  $0.5 \times \text{length} \times \text{width} \times \text{width}$  [21]. Tumor growth was calculated as mean percent change in volume relative to the initial volume at the time of dosing. Animal survival data was analyzed by Kaplan–Meier analysis (GraphPad Prism 9). Body weight was measured twice weekly, and the mice were monitored for signs of distress. Mice were sacrificed if any one of the situations occurred: tumors reached 2.0 cm in diameter, loss of body weight more than 20%, or if the mice showed visible signs of distress, including lack of appetite, excessive lethargy, or formation of sores and rashes. The same health/humane endpoint applies to all our animal studies (subcu- and ortho-CDXs and PDX).

#### **In vivo $^{212}\text{Pb}$ -TCMC-YS5 therapy studies in an intraprostate orthotopic PC3-Luc model**

PC3-luc cells were derived from PC3 cells transfected with the firefly luciferase expressing plasmid from Addgene (Ubc.Luc.IRES.Puro, RRID:Addgene 33307) [25]. PC3-luc cells ( $3 \times 10^5$ ) were injected into the murine prostate in 30  $\mu\text{L}$  of PBS, as previously described [26–28]. Tumor growth was monitored weekly by in vivo bioluminescent imaging (BLI) using a Lago X (Spectral Instruments Imaging, Tucson, AZ, USA). Images were acquired 10 min after intraperitoneal injection of 3 mg d-Luciferin Potassium Salt (Gold Biotechnology, Inc., St Louis MO, USA) in 200  $\mu\text{L}$  0.1 M phosphate buffered saline. Signals were quantified using Aura (Spectral Instruments Imaging) with the manual ROI tool to determine the amount of photons emitted for a given time.

For the therapeutic study, 30 days after PC3-luc cells were inoculated and tumor engraftment were confirmed by in vivo BLI, the mice were given a single i.v. dose of  $^{212}\text{Pb}$ -TCMC-YS5 at 0.74 MBq (20  $\mu\text{Ci}$ ) ( $n=4$ ) or the unlabeled YS5 antibody ( $n=5$ ). Tumor growth was monitored by in vivo BLI. Animal survival data was analyzed by Kaplan–Meier analysis.

#### **In vivo $^{212}\text{Pb}$ -TCMC-YS5 therapy study in a prostate cancer PDX model**

PDX mice with subcutaneously grafted tumor (Cat#: TM00298 PR1996) were purchased from The Jackson Laboratory (Bar Harbor, ME USA). Animal number

per group was based on past experience, not power calculation. When tumors size reaches about 100 mm<sup>3</sup>, mice were given a single i.v. dose of <sup>212</sup>Pb-TCMC-YS5 at 0.74 MBq (20 μCi) (*n* = 6), 0.37 MBq (10 μCi) (*n* = 8) or the unlabeled YS5 antibody (*n* = 4), each along with non-binding human IgG (0.5 mg per mouse) for blocking Fc receptors. The PDX is carried in NSG mice that are known to have a high background antibody binding compared with nude mice used in the CDX study, which can be reduced by injection of Fc blocking agents [29]. To confirm the tumor targeting in these PDX model, <sup>89</sup>Zr-DFO-YS5 PET imaging was performed using microPET/CT Albira Trimodal PET/SPECT/CT Scanner (Bruker Corporation) 3 days post i.v. injection of 3.70 – 5.55 MBq (100 – 150 μCi, 30 μg/mouse) of <sup>89</sup>Zr-DFO-YS5 in saline along with non-binding human IgG (0.5 mg per mouse) for blocking Fc receptors. In the blocking control group, the cold YS5 antibody was administered 2 days prior to <sup>89</sup>Zr-DFO-YS5 injection. Tumor dimensions were measured twice weekly with a digital caliper. Tumor growth was calculated as mean percent change in volume relative to the initial volume

at the time of dosing. Animal survival data was analyzed by Kaplan–Meier analysis. Body weight and signs of distress were assessed twice weekly.

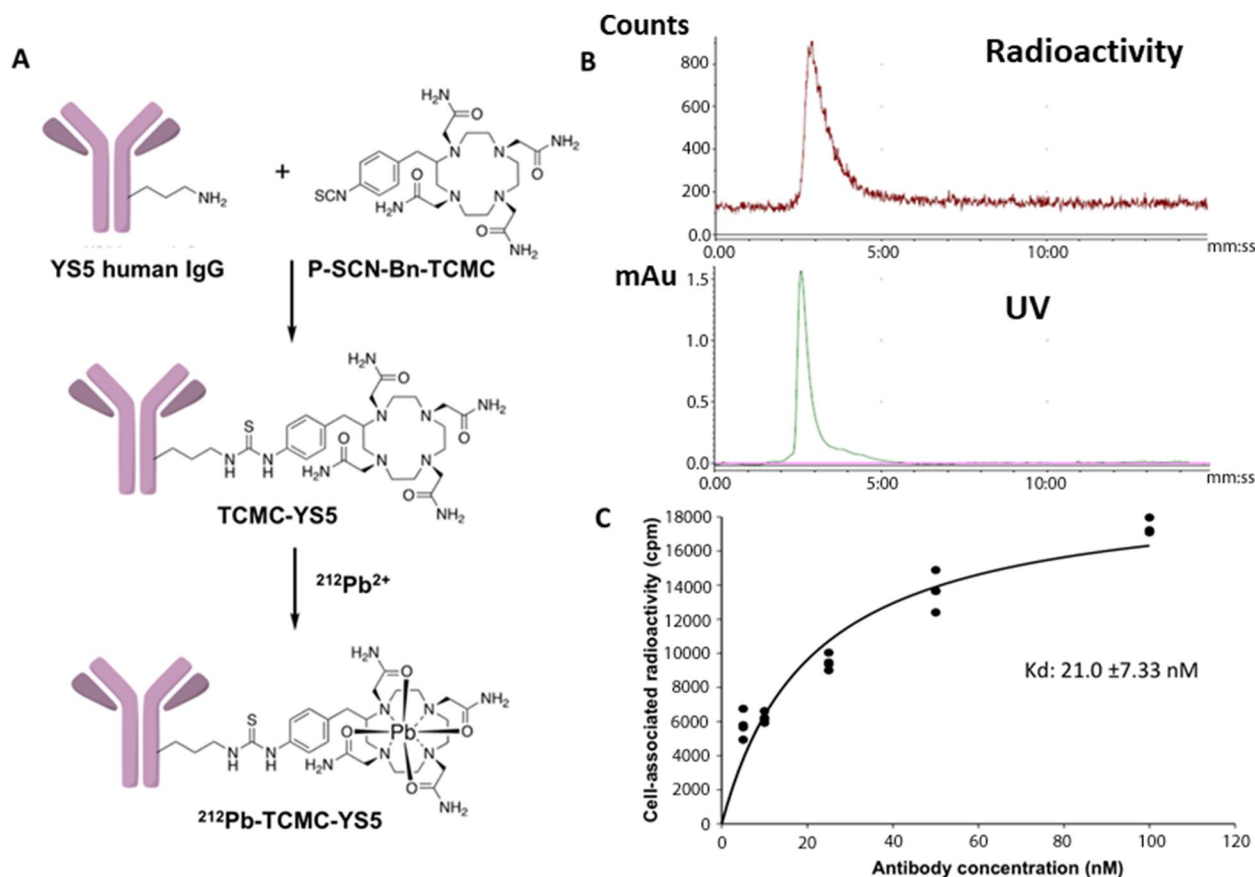
### Statistical analyses

Two-tailed Student's t-test and one-way analysis of variance (ANOVA) were used for analysis of two and multiple (more than two) groups, respectively. *P* < 0.05 was considered significant. Survival was analyzed by Kaplan–Meier analysis. The significance of median survival (treatment group vs. saline control) was determined by a Log-rank (Mantel-Cox) test.

## Results

### Radiochemistry and in vitro cell studies

The chemistry for <sup>212</sup>Pb radiolabeling of the YS5 antibody was performed as shown in Fig. 1A. The <sup>212</sup>Pb radiolabeling process was adopted from the Pb-resin pre-concentration and column extraction method described previously, with modifications [24]. This process simplifies the handling of the isotope, and shortens the whole process to only 1.5 – 2 h with a labeling yield around 70%. The radiochemistry



**Fig. 1** Synthesis of <sup>212</sup>Pb-TCMC-YS5 and in vitro cell binding study. **A** Reaction scheme for <sup>212</sup>Pb-TCMC-YS5 synthesis. **B** Size-exclusion HPLC analysis of <sup>212</sup>Pb-TCMC-YS5. **C** In vitro cell binding assay of <sup>212</sup>Pb-TCMC-YS5 on PC3 cells. Triplicates. Apparent binding affinity (*K<sub>D</sub>*) was calculated by curve fitting

purity of the final  $^{212}\text{Pb}$ -TCMC-YS5 was >98% by size-exclusion HPLC (Fig. 1B). On average each YS5 antibody bears about 2 TCMC molecules as determined by a spectrophotometric assay [23] (Supplemental Fig. S1). The apparent binding affinity (apparent  $K_D$ )  $^{212}\text{Pb}$ -TCMC-YS5 to PC3 cells was determined by an in vitro cell binding assay and found to be  $21.7 \pm 7.3$  nM (Fig. 1C).

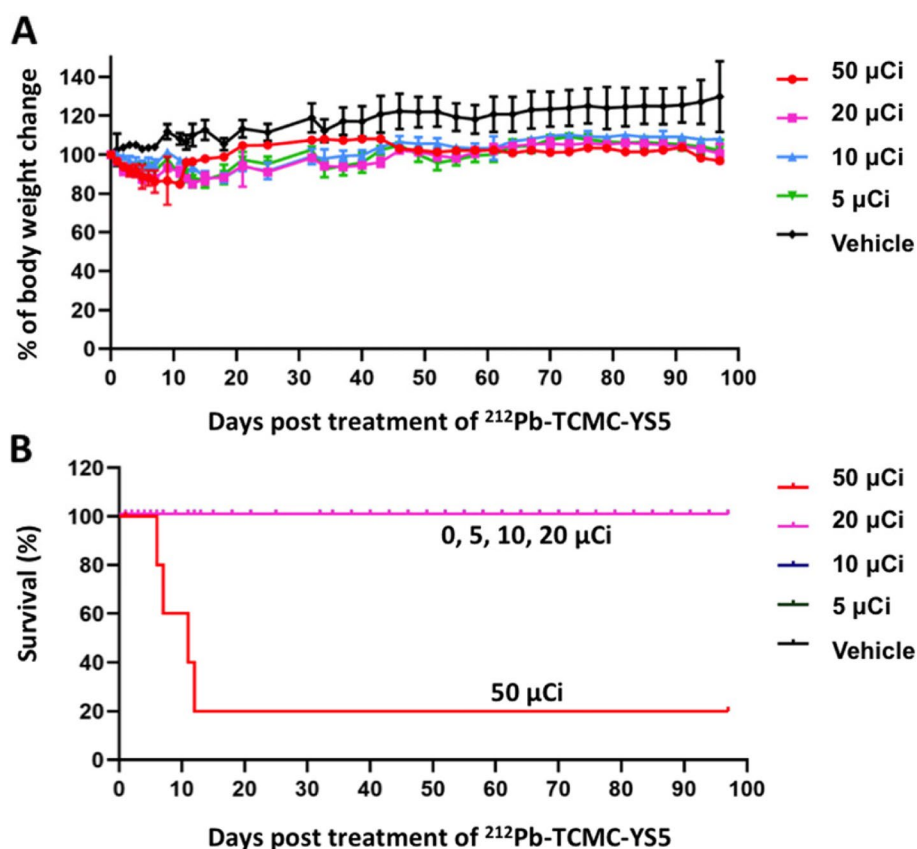
#### Dose and toxicity study

We performed a dose escalation study to identify the safe dose range using non-tumor bearing nude mice. The study included 4 dose groups ( $n=5$  per group) of 0.185 MBq (5  $\mu\text{Ci}$ ), 0.37 MBq (10  $\mu\text{Ci}$ ), 0.74 MBq (20  $\mu\text{Ci}$ ), 1.85 MBq (50  $\mu\text{Ci}$ ) and one control group receiving “cold” YS5 (radioactivity defined as 0  $\mu\text{Ci}$ ,  $n=7$ ). As shown in Fig. 2A, at the highest dose of 1.85 MBq (50  $\mu\text{Ci}$ ), there was 80% death and profound loss of body weight within 10 days. Other groups receiving 0.185 MBq (5  $\mu\text{Ci}$ ), 0.37 MBq (10  $\mu\text{Ci}$ ), or 0.74 MBq (20  $\mu\text{Ci}$ ) exhibit dose-dependent body weight loss within the first two weeks followed by a rebound and stabilization throughout the investigation period and have a 100% survival rate (Fig. 2B). The control group showed gain of body weight

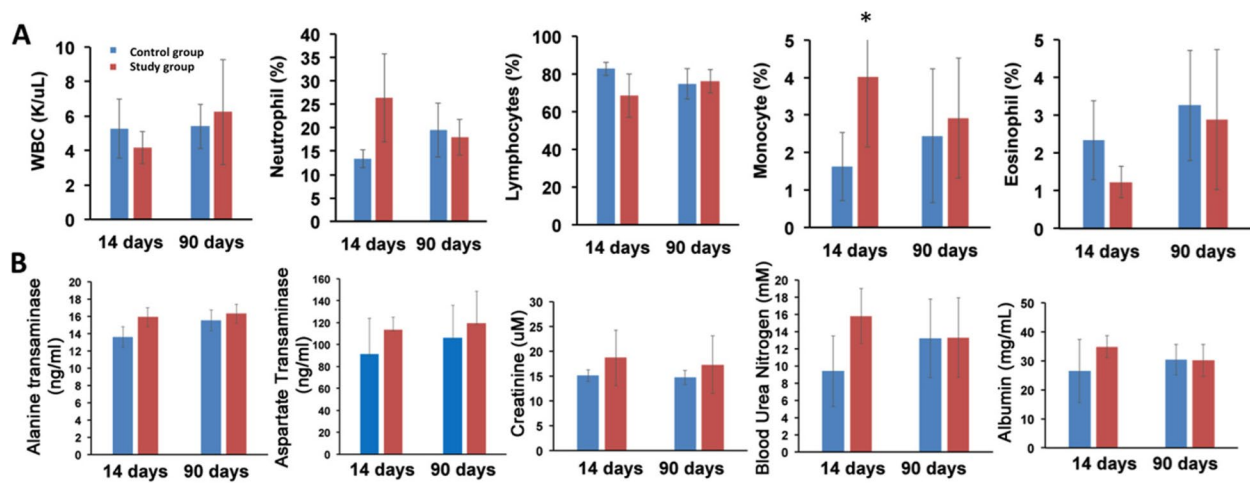
in a slow but steady manner and no death. From this data, the tolerated dose range is 0.185–0.74 MBq (5 – 20  $\mu\text{Ci}$ ), and 0.74 MBq (20  $\mu\text{Ci}$ ) was chosen as the dose for therapeutic study in tumor-bearing mice.

#### Hematological and clinical chemistry study

We performed additional studies, blood cell count and blood chemistry, to evaluate both acute (day-14 post treatment) and long-term (day-90 post treatment) toxicity in mice receiving 0.74 MBq (20  $\mu\text{Ci}$ ) of  $^{212}\text{Pb}$ -TCMC-YS5. As shown in Fig. 3A and Supplemental Table S1, there is no significant difference between treatment vs. control group on either day-14 and Day-90 for any of the cell types studied, except for neutrophil that showed a significant increase on day-14 for the treatment group, suggesting an acute but not long-term neutrophil reaction to treatment. The blood chemistry analysis from albumin, creatinine, BUN, AST, ALT were in the normal range and exhibit no significant difference between the treatment vs. the control group (Fig. 3B and Supplemental Table S2). Those data suggest that 0.74 MBq (20  $\mu\text{Ci}$ ) of  $^{212}\text{Pb}$ -TCMC-YS5 is well tolerated and an appropriate dose to use for therapy study.



**Fig. 2**  $^{212}\text{Pb}$ -TCMC-YS5 dose selection study in non-tumor bearing nude mice. **A** Body weight changes post  $^{212}\text{Pb}$ -TCMC-YS5 treatment. **B** Survival of mice post treatment



**Fig. 3** Acute and long-term toxicity assessment by blood analysis. CD-1 normal mice received 0.74 MBq (20  $\mu$ Ci)  $^{212}\text{Pb}$ -TCMC-YS5 (study group) or no treatment (control group). **A** Hematology analysis of mice 14 days and 90 days post-treatment. **B** Blood clinical chemistry analysis of mice 14 days and 90 days post-treatment

### Therapy study in a subcutaneous mCRPC CDX model

We first studied anti-tumor efficacy of  $^{89}\text{Zr}$ -DFO-YS5 in the PC3 subcu-CDX model. We showed, by PET imaging (Fig. 4A) and biodistribution (Fig. 4B), that  $^{89}\text{Zr}$ -DFO-YS5 targeted the PC3 tumor in vivo, with similar tumor uptake and tumor/non-target ratios compared with other prostate cancer CDX models in our previous study [21]. We performed a single dose efficacy study of  $^{212}\text{Pb}$ -TCMC-YS5 using the PC3 subcu-CDX. A significant tumor inhibition in all treated mice was observed (100%, a complete response): tumor reduction began within the first week with a volume decrease up to 70%, and the inhibitory effect lasted over 40 days post administration of  $^{212}\text{Pb}$ -TCMC-YS5 (Fig. 5A, with individual mouse data shown in Fig. 5B). Tumor growth resumed in 3/5 mice after 40 days post treatment (Supplemental Fig. S2). Only a transient body weight reduction was observed over the duration of the experiment (Fig. 5C), consistent with the result of the dose escalation study in non-tumor bearing mice. All mice recovered to their initial weights within 2 weeks post treatment. 80% mice in the treatment group survived 55 days post treatment (Fig. 5D). In contrast, the control groups (cold YS5 antibody and untreated) showed rapid tumor growth (Fig. 5A) and 100% death within 37 days (Fig. 5D). There is no significant difference between the two controls. There is a significant difference between the study and control groups ( $p=0.001$ ).

### Therapy study in an intraprostate orthotopic mCRPC CDX model

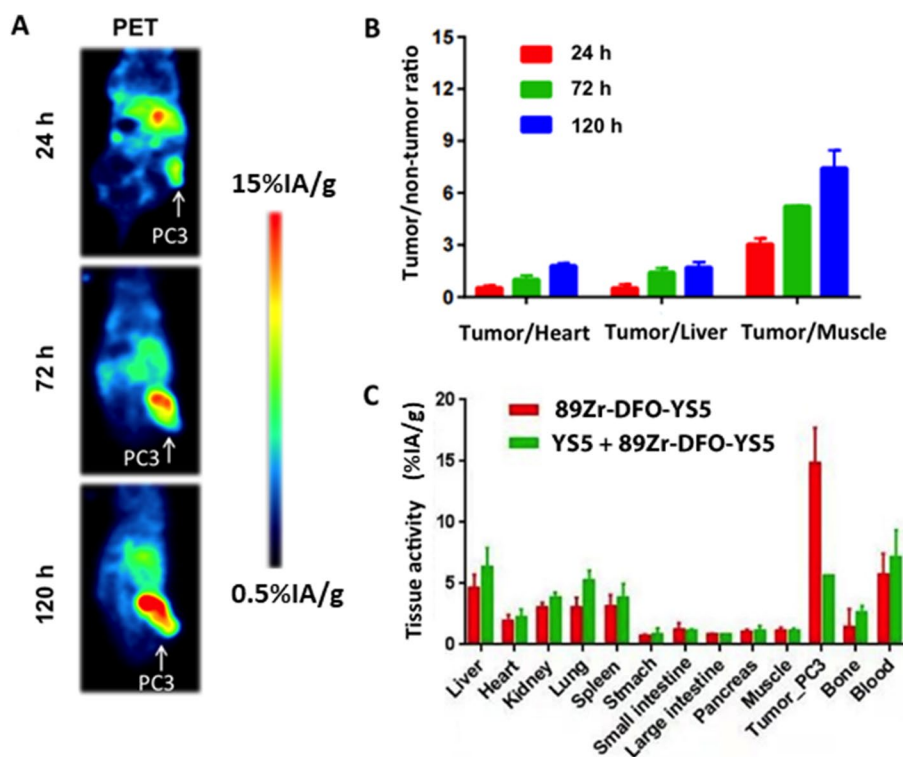
We further studied the therapeutic effect of a single dose  $^{212}\text{Pb}$ -TCMC-YS5 in an intraprostate orthotopic

mCRPC CDX (Fig. 6A). The PC3 cell line expressing the firefly luciferase reporter gene was used to create the ortho-CDX model. As shown in Fig. 6B, tumor growth, as measured by BLI (representative images shown in Supplemental Fig. S3), was significantly inhibited up to 70% and the duration of inhibition was over 60 days for the study group treated with 0.74 MBq (20  $\mu$ Ci)  $^{212}\text{Pb}$ -TCMC-YS5, while tumors in the control group continuously grew. Body weight remained steady for the treatment group for the duration of the study (141 days post treatment) (Fig. 6C). Survival data is shown in Fig. 6D. The mice in the study group survived up to 141 days post treatment (end of experiment) with no death within the first 60 days post treatment. In contrast, no mice survived for the control group 36 days post treatment. The median survival was 100.5 days for the study group, which is significantly longer than the control group that is only 23 days ( $p=0.005$ ).

### Therapy study in a subcutaneous prostate cancer PDX model

To broaden clinical applicability, we performed therapy study using a prostate cancer PDX model. We first used PET imaging with  $^{89}\text{Zr}$ -DFO-YS5 to confirm tumor targeting by YS5 in vivo. The result showed a clear evidence of tumor targeting by YS5 (Fig. 7A) with tumor uptake above 20%IA/g from PET images (Fig. 7B). Uptake in other organs and tissues was minimal, consistent with our previous study using different PDX models [21]. We next studied the therapeutic efficacy of  $^{212}\text{Pb}$ -TCMC-YS5. The PDX tumor was implanted subcutaneously, allowing ready tumor size measurement by caliper. We studied two doses, 0.74 MBq (20  $\mu$ Ci),





**Fig. 4** PET imaging and biodistribution of <sup>89</sup>Zr-DFO-YS5 in PC3 subcu-CDX model. **A** PET/CT images of PC3 tumors at 24, 72 and 120 h post-administration of <sup>89</sup>Zr-DFO-YS5. **B** Tumor/non-tumor ratio derived from PET images at 24, 72 and 120 h post-administration of <sup>89</sup>Zr-DFO-YS5. **C** Biodistribution of <sup>89</sup>Zr-DFO-YS5 at 120 h post-administration

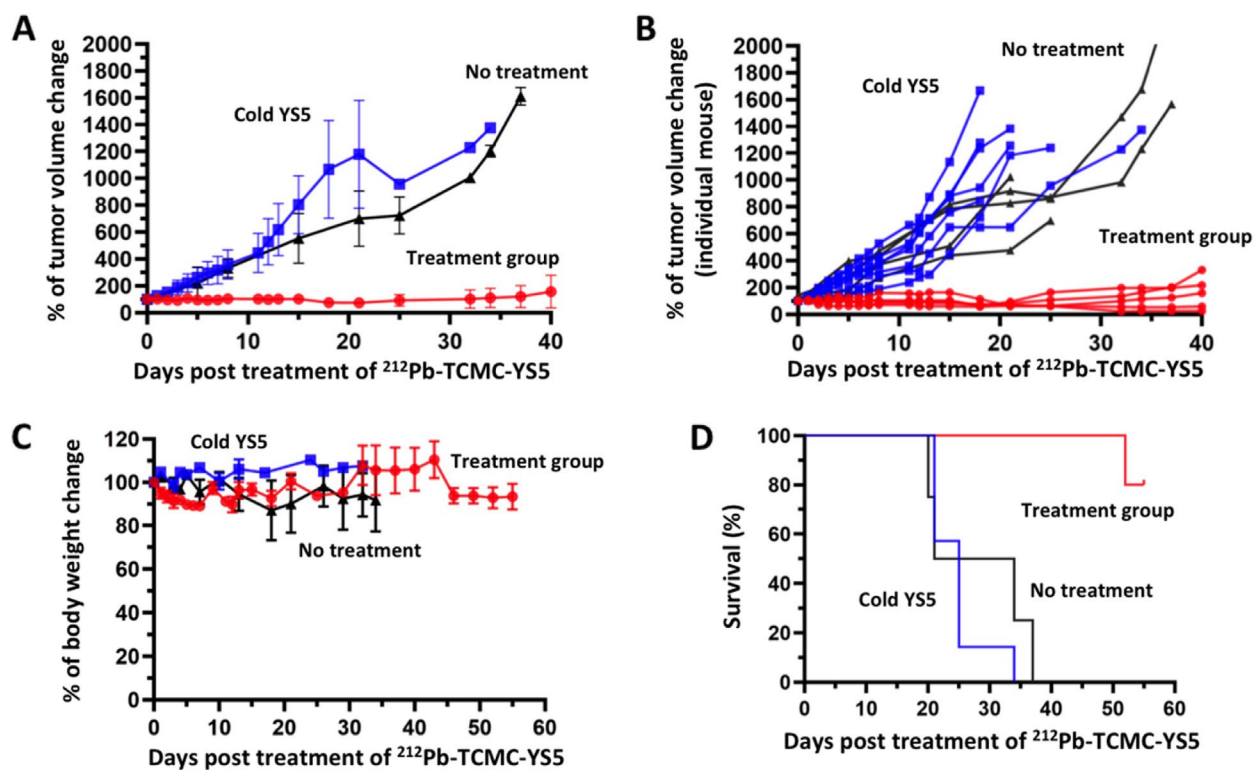
and the lower dose of 0.37 MBq (10 μCi). As shown in Fig. 8A (normalized tumor volume) and Supplemental Fig. S4 (actual tumor volume of individual PDX), both doses inhibited tumor growth, with the higher dose of 0.74 MBq (20 μCi) showing a longer duration of inhibition. Body weight remained steady for the two treatment groups (0.37 MBq (10 μCi) and 0.74 MBq (20 μCi)) for the duration of the study (Fig. 8B). The median survival was at 34 days, 56 days and 99 days respectively for the control, 0.37 MBq (10 μCi), and 0.74 MBq (20 μCi) groups (Fig. 8C), showing a significant improvement over the control for both treatment groups ( $p < 0.0001$  for the two study groups vs. the control group;  $p < 0.001$  between the two study groups).

**Discussion**

CD46 is a new prostate cancer cell surface target that we identified and validated, which shows lineage independent homogeneous expression in both adenocarcinoma and small cell neuroendocrine mCRPC [15], differentiating from commonly targeted antigens such as PSMA. YS5, the human antibody that we developed and used to construct the CD46 targeting ADC (FOR46) that is in multiple clinical trials, binds to a

tumor selective conformational epitope, enabling therapeutic targeting of CD46 [15, 30]. In this study we developed a YS5-based CD46-targeted <sup>212</sup>Pb radiotherapy and studied efficacy in three prostate cancer animal models. We optimized the <sup>212</sup>Pb labeling process that produced <sup>212</sup>Pb-YS5 with high yield that retained high affinity binding to tumor cells. For therapeutic evaluation, we found that a single i.v. dose of 20 μCi of <sup>212</sup>Pb-TCMC-YS5 was well tolerated without causing either acute or long-term toxicity as assessed by body weight change, general health condition, blood cell count and blood chemistry analysis. We next studied efficacy of this dose (a single injection) in three mouse models (i.e., subcutaneous and intraprostate orthotopic CDX models and a PDX model), and found potent tumor inhibition with an increase in animal survival in all three models.

Despite the relatively short half-life of <sup>212</sup>Pb (10.6 h), the tumor inhibition effect from a single dose treatment lasted over 40 days post treatment, suggesting that <sup>212</sup>Pb-TCMC-YS5 could be a promising candidate for prostate cancer therapy development. Several other studies also showed that <sup>212</sup>Pb labeled full-length monoclonal antibodies were effective in tumor inhibition in



**Fig. 5** Therapeutic effect of a single dose of  $^{212}\text{Pb-TCMC-YS5}$  in the PC3 subcu-CDX model. Red: study group receiving  $^{212}\text{Pb-TCMC-YS5}$ . Blue: control group receiving cold YS5 antibody only. Black: no treatment. **A** Tumor growth within 40 days post treatment of  $^{212}\text{Pb-TCMC-YS5}$  (averaged tumor volumes normalized against tumor volume at day 0). **B** Tumor growth of individual mouse xenografts within 40 days post treatment of  $^{212}\text{Pb-TCMC-YS5}$  (normalized against tumor volume at day 0). **C** Body weight post treatment of  $^{212}\text{Pb-TCMC-YS5}$  (averaged body weights normalized against body weight at day 0). **D** Survival of mice post treatment of  $^{212}\text{Pb-TCMC-YS5}$  ( $p = 0.001$  between the study group and the control group)

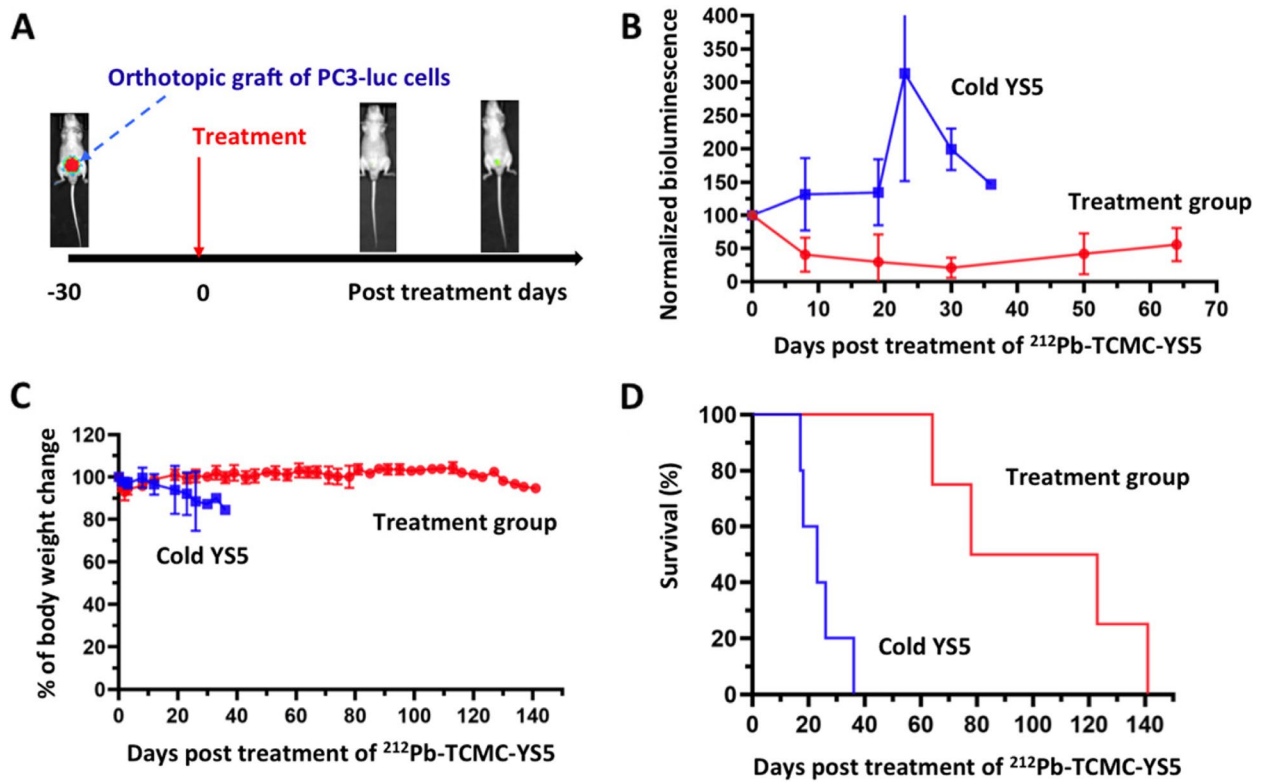
animal models [4, 5, 31–33] and in early phase clinical trials in ovarian cancer patients with intra-peritoneal injection [2, 3], again supporting therapy development with  $^{212}\text{Pb}$ . Thus,  $^{212}\text{Pb}$  radio-ligand therapy may be a promising approach not only for small molecule ligands [8] but also large molecules such as a full-length monoclonal antibody including an IgG molecule. With the recently improved production of  $^{224}\text{Ra-}^{212}\text{Pb}$  and  $^{203}\text{Pb}$  as the imaging theranostic pair, the pace of  $^{212}\text{Pb}$ -based radio-ligand therapy development is expected to accelerate [34–37].

It should be noted that the  $^{212}\text{Pb}$  radiolabeling process employed in this study can be readily incorporated into an automatic synthesizer for clinical production.  $^{212}\text{Pb}$  eluted by strong acids from the  $^{224}\text{Ra-}^{212}\text{Pb}$  generator requires further process before labeling [23, 33]. The short half-life (10.6 h) of  $^{212}\text{Pb}$  also puts a time constraint on the preparation protocol. As such, a more facile and rapid process may facilitate clinical translation. Pre-concentration of  $^{212}\text{Pb}$  via extraction chromatography resin was reported recently [24], bypassing the strong acid requirement. A similar approach for peptide radiolabeling has been developed into a cassette-based system

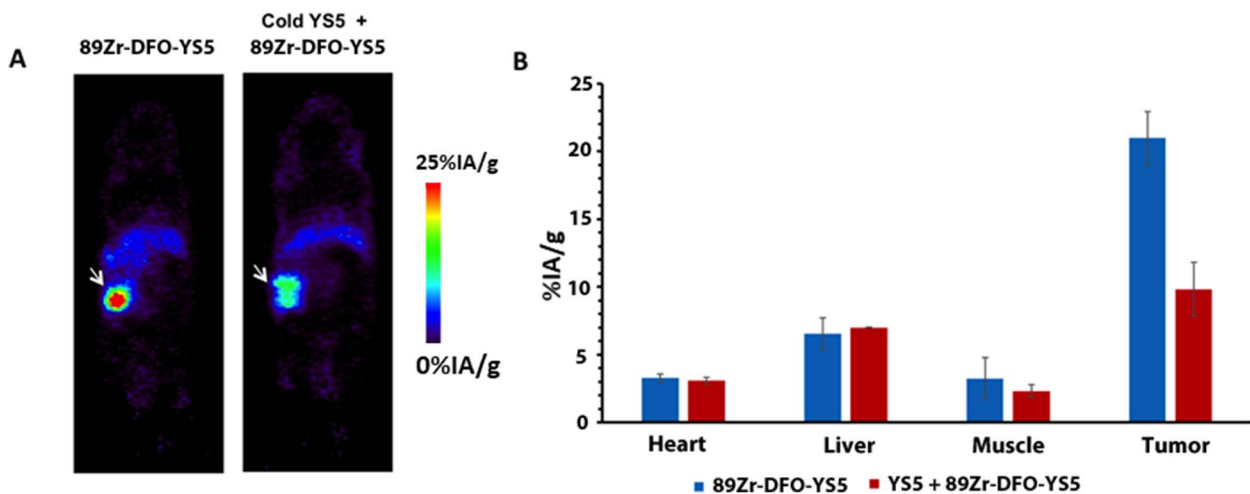
customized for clinical radiopharmaceutical production by the Schultz group [24]. We adopted and modified the above methods, enabling completion of the whole labeling process for  $^{212}\text{Pb-TCMC-YS5}$  within 2 h, suggesting that this method of  $^{212}\text{Pb-TCMC-YS5}$  preparation could be further scaled for clinical production.

We studied the therapeutic effect of  $^{212}\text{Pb-TCMC-YS5}$  in two mCRPC CDXs and one PDX – in all three models efficacy is evident for a single dose of 0.74 MBq (20  $\mu\text{Ci}$ ) and a single treatment cycle, with excellent tolerability and no clear toxicity detected by blood analysis 90 days post treatment. A single treatment of a lower dose (0.37 MBq or 10  $\mu\text{Ci}$ ) of  $^{212}\text{Pb-TCMC-YS5}$  also showed efficacy in the PDX model, suggesting opportunities for further optimization. Additional dosing schemes and multiple treatment cycles in future studies could further improve efficacy over toxicity and increase the therapeutic window.

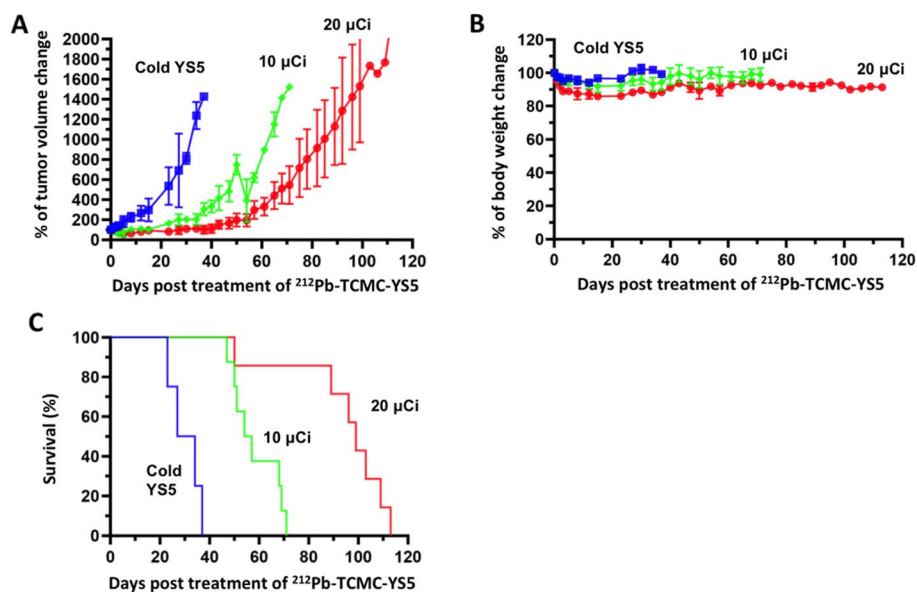
We have shown previously that CD46 is expressed in both adenocarcinoma and small cell neuroendocrine prostate cancer [15]. Nearly homogeneous CD46 mRNA expression was found in 10/10 small cell neuroendocrine and about 36/36 adenocarcinoma mCRPC



**Fig. 6** Therapeutic effect of a single dose of  $^{212}\text{Pb}$ -TCMC-YS5 in the intraprostate PC3-Luc ortho-CDX model. **A** Illustration of study design. **B** Tumor growth measured by BLI. Red: treatment group. Blue: Cold YS5 control. **C** Body weight post treatment of  $^{212}\text{Pb}$ -TCMC-YS5 (normalized against body weight at day 0). **D** Survival of mice post treatment of  $^{212}\text{Pb}$ -TCMC-YS5 ( $p = 0.005$ )



**Fig. 7**  $^{89}\text{Zr}$ -DFO-YS5 PET imaging of a prostate cancer PDX model. **A** PET images of PDX, with (right) or without (left) competition with cold YS5 antibody 3 days post-injection of  $^{89}\text{Zr}$ -DFO-YS5 PET. The cold YS5 antibody was administered 2 days prior to  $^{89}\text{Zr}$ -DFO-YS5 in the blocking control group. **B** Standardized uptake values (SUVs) derived from PET images for tumor and normal organs (heart, liver and muscle). Blue bar: SUV derived from  $^{89}\text{Zr}$ -DFO-YS5 PET images without cold YS5. Orange bar: SUV derived from  $^{89}\text{Zr}$ -DFO-YS5 PET images with cold YS5



**Fig. 8** Therapeutic effect of a single dose of <sup>212</sup>Pb-TCMC-YS5 in a prostate cancer PDX model. Blue: cold YS5 control. Green: a single dose of 0.37 MBq (10 μCi). Red: a single dose of 0.74 MBq (20 μCi). **A** Normalized tumor volume change (against day 0) post treatment. **B** Normalized body weight change (against day 0) post treatment. **C** Normalized animal survival rate (against day 0) post treatment ( $p < 0.0001$  for the two study groups vs. the control group;  $p < 0.001$  between the two study groups)

patient samples. The CDX and PDX models that we used in this study are of the adenocarcinoma subtype. Future study will expand to small cell neuroendocrine models to determine if our <sup>212</sup>Pb-TCMC-YS5 is applicable to this subtype.

The clinical stage human antibody YS5 is compatible with the development of radioimmunotherapy based on other alpha particles. For example, we have also conjugated YS5 with <sup>225</sup>Ac and found potent anti-tumor activity in other prostate cancer models (BioRxiv 2022.10.13.512165). Further studies will compare efficacy and toxicity of those YS5 alpha particle therapies to select a candidate for clinical testing in human patients.

Finally, the YS5 human antibody binds to cynomolgus monkey CD46 but not mouse CD46 [15], preventing us from fully investigating toxicity in mouse models. Future study will address toxicity in non-human primates as we have done for the YS5 ADC [15].

## Conclusion

The result from this first of its kind CD46-targeted <sup>212</sup>Pb radioimmunotherapy study demonstrates that <sup>212</sup>Pb-TCMC-YS5 is well tolerated and efficacious against prostate cancer in both CDX and PDX models. Given that CD46 is becoming a credentialed target in mCRPC, an YS5-based antibody–drug conjugate is in multiple clinical trials (NCT03575819 and NCT05011188) with an

established safety profile, and an YS5–PET imaging agent is in a first-in-human study (NCT05245006), our YS5-conjugated radioimmunotherapy has potential for rapid translation into the clinic for prostate cancer treatment.

## Supplementary Information

The online version contains supplementary material available at <https://doi.org/10.1186/s13046-023-02636-x>.

**Additional file 1: Table S1.** Hematology parameters of acute (day-14) and long-term (day-90) toxicity studies. RBC: Red blood cell; WBC: White blood cell; PLT: Platelet; HCT: Hematocrit test (proportion of RBC in blood); HGB: Hemoglobin; Neu: Neutrophil; Lym: Lymphocyte; Mon: Monocyte; and Eos: Eosinophil. Mean  $\pm$  SD,  $n = 5$ . **Table S2.** Blood clinical chemistry tests for liver and kidney function for acute and long-term toxicity studies. **Figure S1.** The calibration curve of Pb-Arsenazo (Pb-AAIII) spectrophotometric assay for determining the TCMC chelator number per antibody. The standard curve of UV (upper panel) is constructed by plotting the absorbance at 656 nm against Pb<sup>2+</sup> concentration at various dilutions from a stock solution of Pb(II)-AA(III). The stock solution was prepared in a 0.15 M NH<sub>4</sub>OAc buffer at pH 7.0, containing 10 mM AAIII and 4.83 mM Pb(II). The titration curve (bottom panel) is constructed by plotting the change of UV absorbance at 656 nm (%) against the mass of TCMC added to 100 μl of the Pb(II)-AA(III) complex solution. The stock solution had a Pb<sup>2+</sup> concentration of 192 μM. **Figure S2.** Therapeutic effects of a single dose <sup>212</sup>Pb-TCMC-YS5 in the PC3 subcutaneous CDX model. Tumor growth of individual mice within 55 days post treatment of <sup>212</sup>Pb-TCMC-YS5 (normalized against tumor volume at day 0). Red: Study group receiving <sup>212</sup>Pb-TCMC-YS5. Blue: Control group receiving unlabeled YS5 antibody only. **Figure S3.** BLI images of the PC3-Luc orthotopic CDX model treated by a single dose <sup>212</sup>Pb-TCMC-YS5 (top), and the cold YS5 control (bottom). Two animals died in the control group on day-19 post treatment and were not imaged. **Figure S4:** Change (days post injection) of actual tumor volume of individual PDX mouse treated with a single dose of 0.37 MBq (10 μCi) and 0.74 MBq (20 μCi) of <sup>212</sup>Pb-TCMC-YS5.

### Acknowledgements

This study was supported by NIH/NCI R01CA223767 (JH and BL) and CCSG P30 CA44579 (University of Virginia Comprehensive Cancer Center). The PET imaging data and the bioluminescence data were acquired through the University of Virginia Molecular Imaging Core Lab, with NIH S10OD021672 funding for the Albira Si trimodal scanner. The CDX orthotopic model was performed through University of Virginia Molecular Assessments and Preclinical Studies (MAPS) Core. The isotope  $^{212}\text{Pb}$  used in this research was supplied by US Department of Energy Isotope Program managed by the Office of Isotope R&D and Production. The authors are grateful to Dr. Martin Brechbiel for providing advice on translational development, Drs. Michael Schultz and Mengshi Li for providing advice on the Pb resin, and Dr. Kevin Lynch at University of Virginia for the use of Heska Element HT5 hematology analyzer.

### Authors' contributions

JL performed in vitro cell studies and in vivo imaging and therapy studies on CDX subcutaneous model, analyzed the data. T.H. performed in vivo studies on CDX orthotopic model and PDX model, analyzed the data. J. Hua. performed in vitro cell studies and in vivo therapy studies on CDX subcutaneous model, analyzed the data. Q.W. performed the PC3-luc tumor cell study. Y.Su optimized the Y5S antibody purification process and participated in data analysis. P.C. performed the HPLC analysis of radiolabeled antibodies S.B. performed antibody purification and characterization, and data analysis. A.L. performed antibody purification and characterization. Z.X. performed cell culture of PC3-luc cells A.B. provided in vivo therapy antibody dose guidance. S.S. provided guidance on in vivo therapy and revised the manuscript. W.S. provided guidance on in vivo therapy. Y.S. provided experimental guidance. R.R.F. provided experimental guidance. D.G. provided experimental guidance and revise the manuscript. R.D. provided experimental guidance and revise the manuscript. H.L. provided experimental guidance and support on PC3-luc cell studies. B.L. conceptualized the study, designed, funded, guided the project, and wrote the manuscript. J.H. conceptualized the study, designed, funded, guided the project, and wrote the manuscript. The author(s) read and approved the final manuscript.

### Funding

National Institute of Health, National Cancer Institute: NIH/NCI R01CA223767 (JH and BL) and CCSG P30 CA44579 (University of Virginia Comprehensive Cancer Center).

### Availability of data and materials

All data generated or analyzed during this study are included in this published article [and its supplementary information files].

### Declarations

#### Ethics approval and consent to participate

Animal studies were approved by the University of Virginia Institutional Animal Care and Use Committee and performed in compliance with guidelines from the Public Health Service Policy and Animal Welfare Act of the United States.

#### Consent for publication

Not applicable.

#### Competing interests

YSu is an inventor of intellectual properties around the CD46 epitope, the CD46 targeting human antibody, and therapeutic targeting of CD46, which were licensed to Fortis Therapeutics, Inc. SB is an inventor of intellectual properties around the CD46 epitope, the CD46 targeting human antibody, and therapeutic targeting of CD46, which were licensed to Fortis Therapeutics, Inc. YSeo holds equity of Molecular Imaging and Therapeutics, Inc., which were converted to equity of Fortis Therapeutics that licensed intellectual properties from the University of California. RRF reports prior grant funding from Fukushima SiC, outside the existing work. RD received honoraria for consulting from Astellas, Astra Zeneca, Aveo, Bayer, BMS, Exelixis, EMD Serono, Gilead, Hengrui, Hinova, Janssen, Merck, Myovant, Pfizer, Propella, Sanofi Genzyme, Seattle Genetics, Tavanta, outside of the submitted work.

BL is a founder, board member and equity holder of Fortis Therapeutics, Inc., which licensed intellectual properties from the University of California and is conducting clinical trials on CD46 targeting agents. BL also holds equity of Molecular Imaging and Therapeutics, Inc., which were converted to equity of Fortis Therapeutics. BL is an inventor of intellectual properties around the CD46 epitope, the CD46 targeting human antibody, and therapeutic targeting of CD46.

JH holds equity of Molecular Imaging and Therapeutics, Inc., which were converted to equity of Fortis Therapeutics that licensed intellectual properties from the University of California.

The other authors declare no potential conflict of interest.

### Author details

<sup>1</sup>Department of Radiology and Medical Imaging, University of Virginia, Charlottesville, VA 22903, USA. <sup>2</sup>Department of Nuclear Medicine, Peking University Shenzhen Hospital, Guangdong 518036, China. <sup>3</sup>Department of Nuclear Medicine, Chongqing Cancer Hospital, Chongqing University, Chongqing, China. <sup>4</sup>Department of Urology, Nanfang Hospital, Southern Medical University, Guangzhou 510515, China. <sup>5</sup>Department of Pathology, University of Virginia, Charlottesville, VA 22903, USA. <sup>6</sup>Department of Anesthesia, University of California, San Francisco, CA 94110, USA. <sup>7</sup>Department of Radiology and Biomedical Imaging, University of California, San Francisco, CA 94110, USA. <sup>8</sup>Department of Radiation Oncology, University of Alabama, Birmingham, AL 35233, USA. <sup>9</sup>UCSF Helen Diller Family Comprehensive Cancer Center, University of California, San Francisco, CA 94110, USA. <sup>10</sup>Department of Microbiology, Immunology and Cancer Biology, University of Virginia, Charlottesville, VA 22903, USA. <sup>11</sup>UVA Comprehensive Cancer Center, University of Virginia, Charlottesville, VA 22903, USA. <sup>12</sup>Department of Medicine, University of Virginia, Charlottesville, VA 22903, USA.

Received: 29 December 2022 Accepted: 1 March 2023

Published online: 11 March 2023

### References

1. Sgouros G, Bodei L, McDevitt MR, Nedrow JR. Radiopharmaceutical therapy in cancer: clinical advances and challenges. *Nat Rev Drug Discovery*. 2020;19:589–608.
2. Meredith RF, Torgue JJ, Rozgaja TA, Banaga EP, Bunch PW, Alvarez RD, et al. Safety and Outcome Measures of First-in-Human Intraperitoneal  $\alpha$  Radioimmunotherapy With  $^{212}\text{Pb}$ -TCMC-Trastuzumab. *Am J Clin Oncol*. 2018;41:716–21.
3. Meredith RF, Torgue J, Azure MT, Shen S, Saddekni S, Banaga E, et al. Pharmacokinetics and imaging of  $^{212}\text{Pb}$ -TCMC-trastuzumab after intraperitoneal administration in ovarian cancer patients. *Cancer Biother Radiopharm*. 2014;29:12–7.
4. Kasten BB, Oliver PG, Kim H, Fan J, Ferrone S, Zinn KR, et al.  $^{212}\text{Pb}$ -Labeled Antibody 225.28 Targeted to chondroitin sulfate proteoglycan 4 for triple-negative breast cancer therapy in mouse models. *Int J Mol Sci*. 2018;19:925.
5. Maaland AF, Saidi A, Torgue J, Heyerdahl H, Stallons TAR, Kolstad A, et al. Targeted alpha therapy for chronic lymphocytic leukaemia and non-Hodgkin's lymphoma with the anti-CD37 radioimmunoconjugate  $^{212}\text{Pb}$ -NNV003. *PLoS ONE*. 2020;15:e0230526.
6. Banerjee SR, Minn I, Kumar V, Josefsson A, Lisok A, Brummet M, et al. Preclinical Evaluation of  $^{203}\text{Tl}$ -Labeled Low-Molecular-Weight Compounds for Targeted Radiopharmaceutical Therapy of Prostate Cancer. *J Nucl Med*. 2020;61:80–8.
7. Durand-Panteix S, Monteil J, Sage M, Garot A, Clavel M, Saidi A, et al. Preclinical study of  $^{212}\text{Pb}$  alpha-radioimmunotherapy targeting CD20 in non-Hodgkin lymphoma. *Br J Cancer*. 2021;125:1657–65.
8. Delpassand ES, Tworowska I, Esfandiari R, Torgue J, Hurt J, Shafie A, et al. Targeted  $\alpha$ -Emitter Therapy with  $^{212}\text{Pb}$ -DOTAMTATE for the Treatment of Metastatic SSTR-Expressing Neuroendocrine Tumors: First-in-Humans Dose-Escalation Clinical Trial. *J Nucl Med*. 2022;63:1326–33.
9. Wester HJ, Schottelius M. PSMA-Targeted Radiopharmaceuticals for Imaging and Therapy. *Semin Nucl Med*. 2019;49:302–12.
10. Sartor O, de Bono J, Chi KN, Fizazi K, Herrmann K, Rahbar K, et al. Lutetium-177-PSMA-617 for Metastatic Castration-Resistant Prostate Cancer. *N Engl J Med*. 2021;385:1091–103.

11. Rosar F, Krause J, Bartholomä M, Maus S, Stemler T, Hierlmeier I, et al. Efficacy and safety of [(225)Ac]Ac-PSMA-617 augmented [(177)Lu]Lu-PSMA-617 radioligand therapy in patients with highly advanced mCRPC with poor prognosis. *Pharmaceutics* 2021;13:722.
12. Stenberg VY, Larsen RH, Ma LW, Peng Q, Juzenas P, Bruland Ø S, et al. Evaluation of the PSMA-Binding Ligand (212)Pb-NG001 in Multicellular Tumour Spheroid and Mouse Models of Prostate Cancer. *International journal of molecular sciences* 2021;22.
13. Keam SJ. Lutetium Lu 177 Vipivotide Tetraxetan: First Approval. *Mol Diagn Ther*. 2022;26:467–75.
14. Heynickx N, Herrmann K, Vermeulen K, Baatout S, Aerts A. The salivary glands as a dose limiting organ of PSMA- targeted radionuclide therapy: A review of the lessons learnt so far. *Nucl Med Biol*. 2021;98–99:30–9.
15. Su Y, Liu Y, Behrens CR, Bidlingmaier S, Lee NK, Aggarwal R, et al. Targeting CD46 for both adenocarcinoma and neuroendocrine prostate cancer. *JCI Insight*. 2018;3:e121497.
16. Alberts I, Sachpekidis C, Fech V, Rominger A, Afshar-Oromieh A. PSMA-negative prostate cancer and the continued value of choline-PET/CT. *Nuklearmedizin*. 2020;59:33–4.
17. Mannweiler S, Amersdorfer P, Trajanoski S, Terrett JA, King D, Mehes G. Heterogeneity of prostate-specific membrane antigen (PSMA) expression in prostate carcinoma with distant metastasis. *Pathol Oncol Res*. 2009;15:167–72.
18. Su Y, Bidlingmaier S, Lee NK, Liu B. Combine Phage Antibody Display Library Selection on Patient Tissue Specimens with Laser Capture Microdissection to Identify Novel Human Antibodies Targeting Clinically Relevant Tumor Antigens. *Methods Mol Biol*. 2018;1701:331–47.
19. Ruan W, Sassoon A, An F, Simko JP, Liu B. Identification of clinically significant tumor antigens by selecting phage antibody library on tumor cells in situ using laser capture microdissection. *Mol Cell Proteomics*. 2006;5:2364–73.
20. He J, Wang Y, Feng J, Zhu X, Lan X, Iyer AK, et al. Targeting prostate cancer cells in vivo using a rapidly internalizing novel human single-chain antibody fragment. *J Nucl Med*. 2010;51:427–32.
21. Wang S, Li J, Hua J, Su Y, Beckford-Vera DR, Zhao W, et al. Molecular Imaging of Prostate Cancer Targeting CD46 Using ImmunoPET. *Clin Cancer Res*. 2021;27:1305–15.
22. Napoli E, Stenberg VY, Juzeniene A, Hjellum GE, Bruland ØS, Larsen RH. Calibration of sodium iodide detectors and reentrant ionization chambers for (212)Pb activity in different geometries by HPGe activity determined samples. *Appl Radiat Isot*. 2020;166:109362.
23. Baidoo KE, Milenic DE, Brechbiel MW. Methodology for labeling proteins and peptides with lead-212 (212Pb). *Nucl Med Biol*. 2013;40:592–9.
24. Li M, Zhang X, Quinn TP, Lee D, Liu D, Kunkel F, et al. Automated cassette-based production of high specific activity [(203/212)Pb]peptide-based theranostic radiopharmaceuticals for image-guided radionuclide therapy for cancer. *Appl Radiat Isot*. 2017;127:52–60.
25. Jang YY, Ye Z, Cheng L. Molecular imaging and stem cell research. *Mol Imaging*. 2011;10:111–22.
26. McGovern JA, Shafiee A, Wagner F, Lahr CA, Landgraf M, Meinert C, et al. Humanization of the prostate microenvironment reduces homing of pc3 prostate cancer cells to human tissue-engineered bone. *Cancers*. 2018;10:438.
27. Burrell JS, Walker-Samuel S, Boulton JK, Baker LC, Jamin Y, Halliday J, et al. Investigating the Vascular Phenotype of Subcutaneously and Orthotopically Propagated PC3 Prostate Cancer Xenografts Using Combined Carbon-13 Ultrasmall Superparamagnetic Iron Oxide MRI. *Top Magn Reson Imaging*. 2016;25:237–43.
28. Park SI, Kim SJ, McCauley LK, Gallick GE. Pre-clinical mouse models of human prostate cancer and their utility in drug discovery. *Curr Protoc Pharmacol*. 2010;51:14.15.1–14.15.27.
29. Sharma SK, Chow A, Monette S, Vivier D, Pourat J, Edwards KJ, et al. Fc-Mediated Anomalous Biodistribution of Therapeutic Antibodies in Immunodeficient Mouse Models. *Can Res*. 2018;78:1820–32.
30. Sherbenou DW, Aftab BT, Su Y, Behrens CR, Wiita A, Logan AC, et al. Antibody-drug conjugate targeting CD46 eliminates multiple myeloma cells. *J Clin Investig*. 2016;126:4640–53.
31. Milenic DE, Baidoo KE, Kim YS, Barkley R, Brechbiel MW. Targeted  $\alpha$ -Particle Radiation Therapy of HER1-Positive Disseminated Intra-peritoneal Disease: An Investigation of the Human Anti-EGFR Monoclonal Antibody. Panitumumab Translational oncology. 2017;10:535–45.
32. Tan Z, Chen P, Schneider N, Glover S, Cui L, Torgue J, et al. Significant systemic therapeutic effects of high-LET immunoradiation by 212Pb-trastuzumab against prostatic tumors of androgen-independent human prostate cancer in mice. *Int J Oncol*. 2012;40:1881–8.
33. Westrøm S, Generalov R, Bønsdorff TB, Larsen RH. Preparation of (212)Pb-labeled monoclonal antibody using a novel (224)Ra-based generator solution. *Nucl Med Biol*. 2017;51:1–9.
34. Kokov KV, Egorova BV, German MN, Klabukov ID, Krashennikov ME, Larkin-Kondrov AA, et al. (212)Pb: Production approaches and targeted therapy applications. *Pharmaceutics*. 2022;14:189.
35. Li RG, Stenberg VY, Larsen RH. A novel experimental generator for production of high purity lead-212 for use in radiopharmaceuticals. *J Nucl Med*. 2023;64:173–6.
36. McNeil BL, Robertson AKH, Fu W, Yang H, Hoehr C, Ramogida CF, et al. Production, purification, and radiolabeling of the (203)Pb/(212)Pb therapeutic pair. *EJNMMI radiopharmacy and chemistry*. 2021;6:6.
37. Yang J, Xu J, Cheuy L, Gonzalez R, Fisher DR, Miao Y. Evaluation of a Novel Pb-203-Labeled Lactam-Cyclized Alpha-Melanocyte-Stimulating Hormone Peptide for Melanoma Targeting. *Mol Pharm*. 2019;16:1694–702.

## Publisher's Note

Springer Nature remains neutral with regard to jurisdictional claims in published maps and institutional affiliations.

**Ready to submit your research? Choose BMC and benefit from:**

- fast, convenient online submission
- thorough peer review by experienced researchers in your field
- rapid publication on acceptance
- support for research data, including large and complex data types
- gold Open Access which fosters wider collaboration and increased citations
- maximum visibility for your research: over 100M website views per year

**At BMC, research is always in progress.**

Learn more [biomedcentral.com/submissions](https://biomedcentral.com/submissions)

