

UC San Diego

UC San Diego Previously Published Works

Title

The costimulatory immunogen LPS induces the B-Cell clones that infiltrate transplanted human kidneys

Permalink

<https://escholarship.org/uc/item/88q8p41c>

Journal

Proceedings of the National Academy of Sciences of the United States of America, 109(16)

ISSN

0027-8424

Authors

Grover, Rajesh K
Cheng, Julong
Peng, Yingjie
et al.

Publication Date

2012-04-17

DOI

10.1073/pnas.1202214109

Peer reviewed

The costimulatory immunogen LPS induces the B-Cell clones that infiltrate transplanted human kidneys

Rajesh K. Grover^{a,b}, Julong Cheng^a, Yingjie Peng^a, Teresa M. Jones^a, Diana I. Ruiz^a, Richard J. Ulevitch^c, John I. Glass^d, Edward A. Dennis^e, Daniel R. Salomon^f, and Richard A. Lerner^{a,b,1}

^aDepartments of Molecular Biology, ^cImmunology and Microbial Sciences, ^fMolecular and Experimental Medicine, and ^bChemistry, The Scripps Research Institute, La Jolla, CA 92037; ^dDepartments of Chemistry and Biochemistry and Pharmacology, University of California, San Diego, 9500 Gilman Drive MC 0601, La Jolla, CA 92093-0601; and ^eSynthetic Biology and Bioenergy Group, J Craig Venter Research Institute, 9704 Medical Center Drive, Rockville, MD 20850

Contributed by Richard A. Lerner, February 14, 2012 (sent for review January 6, 2012)

The mechanism of chronic rejection of transplanted human kidneys is unknown. An understanding of this process is important because, chronic rejection ultimately leads to loss of the kidney allograft in most transplants. One feature of chronic rejection is the infiltration of ectopic B-cell clusters that are clonal into the transplanted kidney. We now show that the antibodies produced by these B-cells react strongly with the core carbohydrate region of LPS. Since LPS is a costimulatory immunogen that can react with both the B-cell receptor (BCR) and the Toll-like receptor 4 (TLR4), these results suggest a mechanism for the selective pressure that leads to clonality of these B-cell clusters and opens the possibility that infection and the attendant exposure to LPS plays a role in the chronic rejection of human kidney transplants. If confirmed by clinical studies, these results suggest that treating patients with signs of chronic rejection with antibiotics may improve kidney allograft survival.

anti-LPS antibody | antibody library | immunochemistry | kidney rejection | transplantation

Kidney transplantation is considered to be the treatment of choice for patients with end stage renal disease. However, in spite of improvements in treating acute rejection, the incidence of chronic rejection remains largely unchanged and most kidney allografts are ultimately lost (1). While the mechanism of chronic kidney rejection is far from certain, recent studies have suggested that a large set of genes that encode proteins of the innate and adaptive immune system are expressed in the host during rejection (2). Another interesting immunological feature of transplanted kidneys is the appearance of highly organized ectopic B-cell clusters in the transplant (3–14).

Recently we prepared combinatorial antibody libraries from these infiltrating B-cell clusters and showed that they are clonal. However, the nature of the selective antigenic pressure(s) that led to the clonality of these B-cell clusters is not known. We now report that the antibodies produced by the B-cells within these clusters, as well as those in the serum of patients who were rejecting transplants, react strongly with the core carbohydrate epitopes of bacterial lipopolysaccharide (LPS). LPS is an immunogen that can react with both the B-cell receptor (BCR) and the Toll-like receptor 4 (TLR4). This combined engagement of the BCR and the TLR4 can lead to selective replication of members of the B-cell repertoire and ultimately to clonality (15–25). These results raise the possibility that bacterial infection may play a role in chronic allograft rejection.

Results

Search for the Immunogen. The search for antigens and immunogens after one encounters an interesting antibody can be difficult. For example, we have known about the presence of oligoclonal antibodies in the spinal fluid of patients with multiple sclerosis for almost fifty years, yet the nature of the antigen(s) with which the antibodies react remains unproven (26). Also, with only a few ex-

ceptions, the antigen, if any, that reacts with the clonal immunoglobulins produced by lymphomas and myelomas is not known.

In the case of transplanted human kidneys, a search for the antigen(s) that drives the replication of the B-cells that have infiltrated the allograft should be simpler because one knows the perturbations that initiated the process. These include the introduction of a foreign organ with a revised anatomy and a mechanically compromised urinary tract into an immunosuppressed patient. Given that the most obvious perturbation was the placement of a foreign organ into a patient, we felt initially that the immunogen was likely an alloantigen. However, our early studies with HLA and MICA alloantigens suggested that this was not the case and we turned our attention to infectious agents. We utilized the *H. Pylori*. induced MALT lymphomas as a precedent because studies of their pathogenesis has taught us that the sustained interaction between bacteria and/or their products and immunocompetent cells in a confined space can lead to clonal proliferation of B-cells and even malignancy. In most cases of MALT lymphomas the malignancy disappears when the inciting *H. Pylori*. infection is cured by antibiotics (27–30). By analogy, in the transplanted kidney there is the potential for continuous exposure to bacterial antigens by a urinary reflux mechanism in the setting of induced immunosuppression.

To determine whether antibodies produced by the ectopic B-cell clones react with bacterial antigens, we prepared single chain and Fab components of the antibody molecules encoded by the genes that we determined to be expressed by the clonal infiltrates. We tested the ability of these antibody constructs to bind to molecules in the total cellular extracts of continuously growing human lymphocytes (Wil2), yeast (*Saccharomyces cerevisiae*), and *Escherichia coli* (K12) cells as well as BSA by Western blot analysis (Fig. 1A). The ponceau red protein staining is shown in panel 5. Remarkably, these experiments showed that the antibodies reacted with a ladder of molecules present in the *E. coli* cytoplasmic extracts, but did not react specifically with the human or yeast cell extracts. The reactive antigens in the *E. coli* extracts had molecular sizes ranging between 10 to 150 kD relative to the protein markers. In addition, these antibodies also reacted with a low molecular weight molecule that is present in the set of commercial *E. coli* derived protein molecular weight markers (Fig. S1). No reaction was observed with control unrelated ScFv antibodies (panel 3) or the secondary anti-tag antibody (panel 4). Importantly, antibodies from two distinct B-cell clones from different patients that used different germ line genes (VH 1-69

Author contributions: R.K.G., J.C., Y.P., T.M.J., D.I.R., R.J.U., J.I.G., E.A.D., D.R.S., and R.A.L. designed research; R.K.G., J.C., Y.P., T.M.J., D.I.R., D.R.S., and R.A.L. performed research; R.K.G., D.R.S., and R.A.L. contributed new reagents/analytic tools; R.K.G., J.C., Y.P., T.M.J., D.I.R., R.J.U., J.I.G., E.A.D., D.R.S., and R.A.L. analyzed data; and R.K.G., D.R.S., and R.A.L. wrote the paper.

The authors declare no conflict of interest.

¹To whom correspondence should be addressed. E-mail: rlerner@scripps.edu.

This article contains supporting information online at www.pnas.org/lookup/suppl/doi:10.1073/pnas.1202214109/-DCSupplemental.

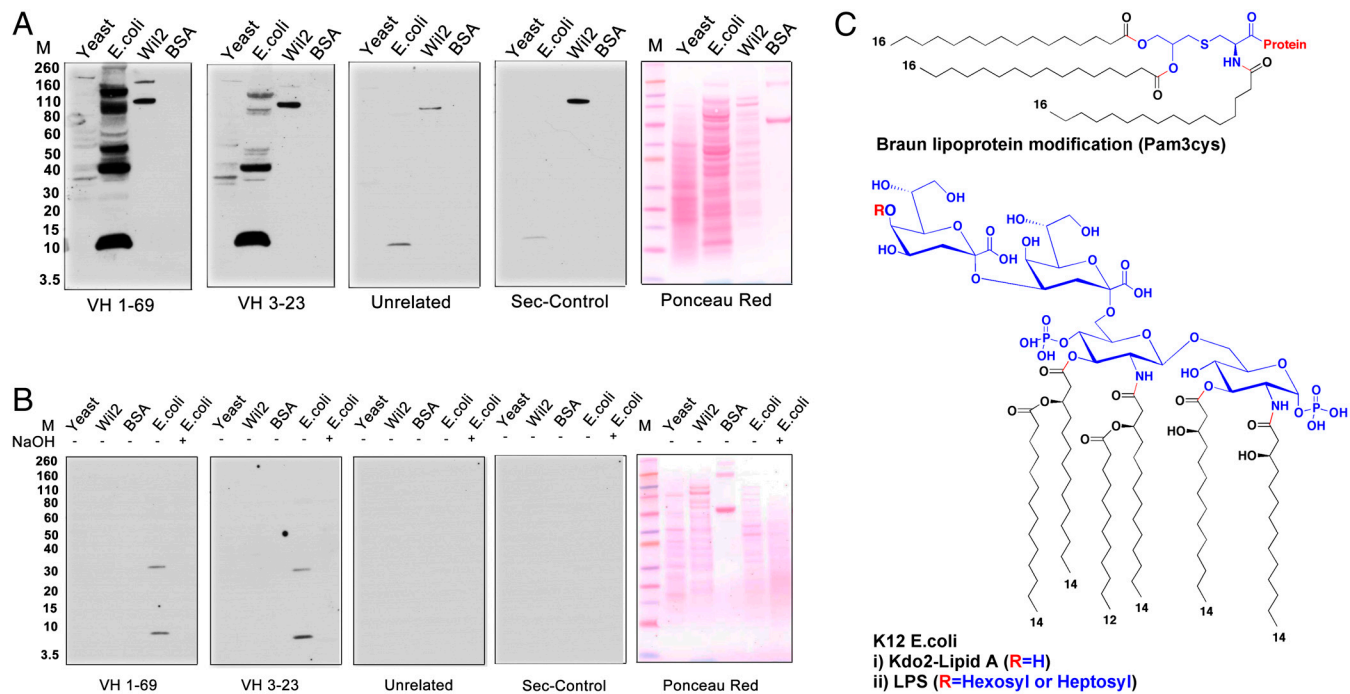


Fig. 1. (A) Western blot analysis of the reactivity of kidney-derived ScFv antibodies VH169 and VH323 with Yeast, K12 strain of *E. coli*, Wil2 cell extracts, and BSA. Control antibodies were an unrelated ScFv antibody against the IL1-RA protein and the secondary anti-flag antibody (Sigma) alone. *E. coli* and yeast cells were grown in appropriate media and after centrifugation the cells were lysed according to the manufacturer's protocol using lysis buffer from Sigma Aldrich. Nucleic acids were degraded by treatment with DNAase and RNAase. A Protease inhibitor cocktail (Roche) was added to prevent proteolytic degradation. The extracts were separated on SDS-page gels and transferred to nitrocellulose membranes for Western blot analysis. (B) Western blot analysis of antibody reactivity after treatment of the extracts with 0.05 N NaOH (lane 5 all panels). The *E. coli* extract was treated with 0.05 NaOH for 2 h and neutralized to pH 7.0 with HCl. The extracts were separated on SDS-page gels as described in Fig. 1A. (C) Molecular structures of (i) Braun N-terminal (pam3cys) modification of bacterial lipoproteins and (ii) LPS and kdo2-Lipid A from k12 *E. coli*.

and VH 3-23) and CDR3 regions gave the same pattern of reactivity (Fig. 1A). These experiments constrained the antigen hunt to molecules that are unique to *E. coli*. Such molecules could occur either because of a common posttranslational modification of multiple distinct proteins or because the molecule itself occurs as a set of subspecies. To determine whether the antigen was a protein or a nonpeptide entity, we determined its alkali sensitivity under conditions that did not disrupt amide bonds. When the *E. coli* extracts were treated with sodium hydroxide (0.05 N) prior to performing the Western blot analysis, the reactivity of the antibodies from the kidney was totally abrogated (Fig. 1B) (panels 1–4). This result strongly suggested that the interacting antigen was not a protein but rather was a molecule present in *E. coli* that was susceptible to ester hydrolysis. Studies on the alkali sensitivity of antigens are usually designed to determine whether certain types of chemical bonds are present in the antigen. However, when such studies are combined with gel electrophoresis and Western blotting, there are two different mechanisms by which the apparent binding may be lost. In one case the actual epitope is destroyed by alkaline hydrolysis of a sensitive bond; alternatively the migration of the target molecule can change, causing it to be lost or appear at a different position on the gel. In either case, alkali sensitivity yields some information about the chemical nature of the target molecule, but determining which mechanism is operative is important for the analysis of the fine specificity of antibody binding. We were able to determine which of the two mechanisms were operative by treating the actual Western blots post migration with alkali. Under these conditions the reactivity with antibody is retained, indicating that the alkali sensitive portion of the molecule while present in the parent structure, is not part of the actual epitope.

There are two prominent alkaline sensitive molecules that are uniquely present in bacteria that present a ladder pattern on gel electrophoresis either because of an intrinsic property of

the molecule itself or because they occur as a posttranslational modification of multiple distinct proteins. These are the Braun (Pam3Cys) modification of lipoproteins and lipopolysaccharide (LPS) (Fig. 1C). To determine whether the (Pam3Cys) molecule was the antigen, we studied by Western blot analysis the *E. coli* lipoprotein Lip12 (M.W 14 kD) (Fig. S2) that carries the Pam3Cys modification and a mutant of Lip12 that lacks the Braun modification (Fig. 2A) (31). The VH169 antibody from the kidney again reacted strongly and selectively with an antigen present in the protein markers (marker lane), the *E. coli* cell extract (lane 3), and a band that did not stain with ponceau red that was present in both the wild type Lip12-Pam3cys and mutant Lip12 preparations (lanes 5 and 6) but not with yeast or Wil2 cell extracts or with BSA (lane 1, 2 and 4). The reactive bands did not correspond to the Lip 12 proteins at approximately 14 kD (ponceau red panel 2) and appeared to contain molecules that copurified with the affinity selected Lip 12 proteins or the *E. coli* derived marker proteins. The reactive antigens had molecular sizes of approximately 10 and 35 kD relative to the protein markers (Fig. 2A). Thus, affinity chromatography turned out to be a convenient method to enrich for the immunoreactive molecule that copurifies with either Lip 12 or the marker proteins.

Since, the Pam3Cys functionality was not the antigen, we turned our attention to LPS. To confirm the molecular identity of the reactive antigen, Western blot analysis of SDS gels of *E. coli* extracts and highly purified Kdo2-lipid A were used to compare the reactivity of the antibodies produced in the kidney to that of a commercial monoclonal anti-LPS antibody (Fig. 2B). The gels were also stained with zinc imidazole which is relatively specific for LPS (Fig. S3). The commercial anti-LPS antibody reacted with a band on the gel that stained with zinc imidazole and appeared identical to that recognized by the antibodies produced by the clonal B-cells that had infiltrated the transplanted kidneys (Fig. 2B). This low molecular weight band corresponds in size

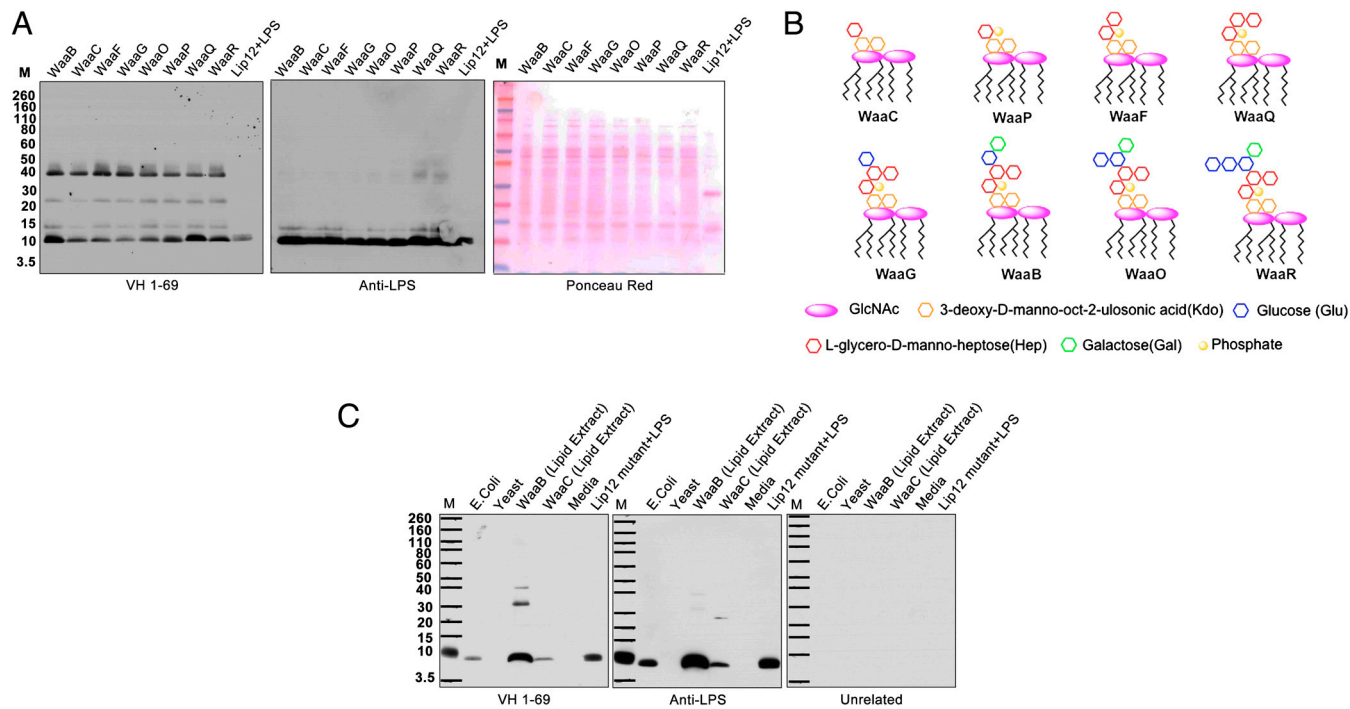


Fig. 3. (A) Western blot analysis of cell extracts of K12 *E. coli* strains that are mutant in the biosynthesis pathway of LPS. Details about the mutations are given in Fig. S2 A and B. Mutant *E. coli* cells were grown and after centrifugation the cells were lysed using lysis buffer from Sigma Aldrich. Nucleic acids were removed by treatment with DNAase and RNAase. The extracts were separated on SDS-page gels and transferred to nitrocellulose membranes for western blot analysis. (B) A cartoon depicting the chemical composition of the expected core LPS structure in the various mutants. (C) Western Blot analysis of purified LPS components from mutants WaaB and WaaC extracted by a chloroform:methanol mixture (2:1) and separated on SDS gels. Washed bacterial pellets were stirred in chloroform:methanol for 12 h in a closed container and centrifuged to separate the organic phase. Equal volumes were evaporated and loaded onto SDS-page gels. The reactivities of the kidney-derived VH-169 and anti-LPS antibodies were compared. The unrelated control antibody was a ScFv antibody against the IL1-RA protein. The *E. coli* K12 Keio Collection (34) mutants were provided by the late Professor Christian R. H. Raetz and his laboratory at Duke University.

trend towards significant ($P < 0.07$). Most patients with well-functioning allografts and those experiencing acute rejection had anti-LPS titers that were similar to those of normal individuals, but two patients in the latter two cohorts had higher titers. These studies are in agreement with the work of others that showed that, while some “normal” individuals have antibodies to LPS, the titers are generally much lower than those seen in patients with known infections (35). The patients with multiple myeloma were interesting because, for reasons that are presently obscure, none of them had detectable antibodies to LPS. These ELISA results were confirmed by Western blot analysis using cytoplasmic extracts of *E. coli*, human Wil2, and yeast cells as antigens. Again, as with the purified immunoglobulins from the infiltrating B-cell clones, the antibodies from the plasma of patients with acute rejection and chronic allograft nephropathy showed strong and selective binding to the low molecular weight *E. coli* band (Fig. 4B). As reported by others, some normal individuals have antibodies that react with a “ladder” of LPS adducts. Unlike what we observed in the transplant patients, we also observed this “laddered” pattern of reactivity in some of our normal individuals, thereby indicating that our Western blot gel system would allow identification of this pattern of reactivity if it was present (Fig. S7).

The Antibodies Produced by the B-cell Clusters Neutralize LPS. The antibodies produced by the B-cell clones that infiltrate transplanted kidneys could simply bind to LPS or they could both bind and neutralize its immunostimulatory activity. To determine whether the kidney-derived antibodies were functional, they were tested for their ability to block the LPS mediated stimulation of TLR4 HEK cells expressing TLR4 (Fig. 5, Fig. S8). On addition of antibody LPS stimulation of the cells was inhibited, suggesting that the antibody is able to block the interaction of the lipid com-

ponent of LPS with the TLR4 binding pocket. Apparently, antibody binding to the core sugars of LPS is sufficient to neutralize its function, presumably by steric effects.

Discussion

The most important aspect of the present study is the finding that the special circumstances that surround human kidney transplantation may have opened a window into the consequences of a sustained interaction between the microbiome and the immune repertoire in man. The unique features of the transplant patient include the presence of a foreign organ, a mechanically compromised urogenital tract, immunosuppression, and chronic inflammation. We expect that there may be other as yet unrecognized situations where encounters between the microbiome and members of the immune repertoire lead to proliferation of clonal populations of immune-competent cells and even malignancies. Thus, these findings may relate to the pathogenesis of the clonal proliferation of B-cells in other diseases such as lymphomas and myelomas where the driving forces may not be as transparent because the interactions are taking place in a less confined space. Indeed, we already know that MALT lymphomas arise because of the interaction between *H. Pylori* and certain B-cells in a situation not too dissimilar from that of human transplantation in terms of anatomical confinement and mechanisms that allow for enrichment of the bacterial pathogen (27–30). While many more clones from infiltrating B-cells will have to be studied to generalize these findings, our results from the serum already suggest that antibody reactivity with LPS in transplant patients may be a very common phenomena.

In terms of antigenic specificity, the reactivity of the kidney-derived antibodies are in agreement with the studies of Pollack et al., who demonstrated that human monoclonal antibodies react with the core oligosaccharides in a low molecular weight ad-

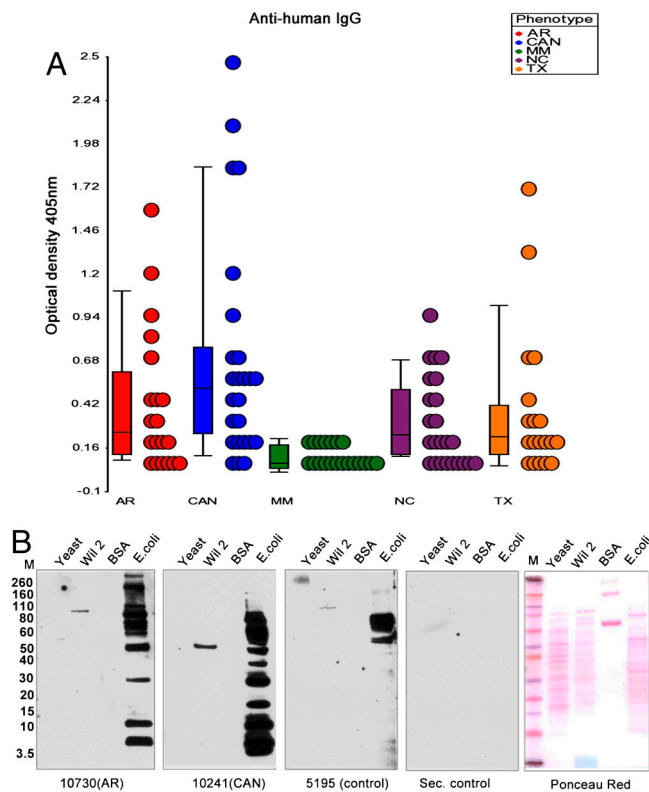


Fig. 4. (A) Analysis of anti-LPS titers in patients and normal controls. Plasma samples were obtained from control normal individuals (NC), patients with chronic allograft rejection (CAN), acute rejection (AR), well-functioning transplants (TX), and multiple myeloma (MM). Twenty samples from each cohort were analyzed by ELISA using the affinity-purified LPS- Lip12Pam3Cys preparation as an antigen. (B) Western blot analysis of Yeast, Wli2, K12 *E. coli* cell extracts and BSA with the sera from the different cohorts. The antigens were prepared as in Fig. 1A. The extracts were separated on SDS-page gels and transferred to nitrocellulose membranes for Western blot analysis of the plasma. Binding was detected using a secondary antihuman IgG antibody. The control antibodies were normal plasma and antihuman IgG (Southern biotech.) alone (Sec. control).

duct of LPS that is similar to the species described here (36). Also, Di Padova et al. were able to generate broadly cross-reactive murine monoclonal antibodies that react with the LPS core and neutralize its activity, and Cross et al. demonstrated that antibodies against the “uncapped core regions” of LPS are generated in bacteremic patients (37, 38). Finally, the structural studies of Brooks et al. showed that murine monoclonal antibodies to LPS could achieve reasonable binding energy ($K_D \sim 3.0 \times 10^8$ M) by recognizing only a limited number of core sugars (39). In these studies and ours, the likely reason that the antibodies are selective for the lower molecular weight species is because the appended O antigen irrespective of serotype may sterically hinder reactivity with the core portion of LPS.

The identification of LPS as the immunogen immediately suggests a mechanism for the observed clonality of the B-cell clusters that infiltrate kidney transplants. The B-cells in these clusters may become clonal because they have a selective advantage for replication in that LPS can engage both the BCR and Toll-4 receptors and is, thus, capable of costimulation of cells bearing both receptors (15–25). In this model, one starts with a population of B-cells where all cells have Toll-4 like receptors on their cellular surface for which LPS is the ligand, but only a very few have BCRs that react with LPS. In the simplest case, the BCR and TLRs react with different regions of the LPS and are, thus, simultaneously engaged. Such costimulation will lead to the production of lymphokines and cytokines that give selectable growth advan-

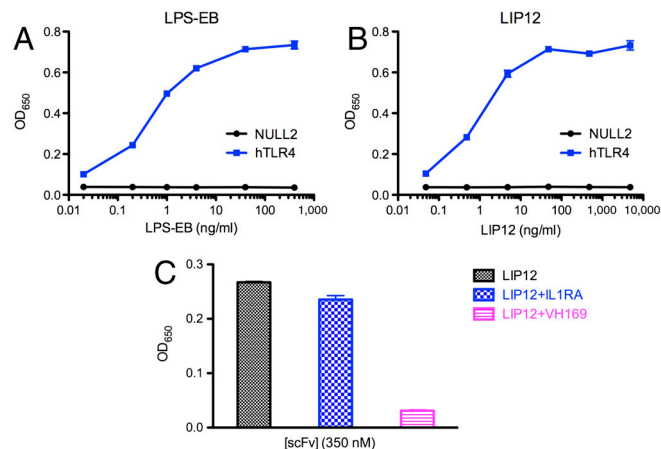


Fig. 5. Inhibition of LPS stimulation of HEK cells. (A) Dose response curves for the stimulation of hTLR4 expressed on Hek-Blue-hTLR4 cells (Invivogen). Cells were stimulated for 24 h with either purified LPS (closed circles) or (B) affinity-purified LPS prepared as in Fig. 2A. After 7 and 20 h the cell culture supernatant was analyzed for production of secreted embryonic alkaline phosphatase (SEAP) using a spectrophotometric measurement at 650 nm. The lines were obtained by a nonlinear regression analysis where the data was fit to a four-parameter logistic equation based on a simple binding model. Error bars represent standard deviation of triplicate measurements. (C) The ScFv VH 1-69 kidney-derived antibody versus an unrelated ScFv antibody (anti-IL1RA) were tested for their ability to inhibit induction of SEAP by LPS by incubating the affinity-purified LPS antigen and the antibodies for 30 min prior to adding the mixture to the cells. Approximately 1 ng/mL (approximately 0.2 nM) of LPS antigen was incubated with 350 nM of antibody.

tage to the cells that produce them. Indeed, this costimulation mechanism has been recently studied and discussed by others, both in the context of immune responses to LPS and systemic autoimmunity (15–25).

The clinical course of chronic kidney rejection seems to be event driven. Thus, in the face of no obvious change in the status of the alloantigen or immunosuppressive therapy, the rejection process accelerates. Our study suggests that stochastic infection and exposure to LPS or an antigenically related molecule might be one of the events that drives the chronic rejection process. Urinary tract infection is common in transplant patients and animal studies of pyelonephritis have shown that morphological changes in the kidney are associated with antibodies against lipid A (40–42). Also, Misselwitz et al. and Mattsby-Baltzer et al. showed that children with urinary tract infections had antibodies against lipid A and patients with the highest titers had an increased risk of renal scarring (42, 43). We do not know which strain of *E. coli* induced the clonal B-cell infiltration of the kidney transplants that we studied. Since the antibodies are to the more conserved core region of LPS, the range of bacterial strains that could induce the response is much larger than if the antibodies were directed to the more variable O-antigen. Nevertheless, some studies have suggested that certain uropathogenic *E. coli* strains are overrepresented as the risk factor for renal transplant patient population (44, 45).

The determination of the antigen with which the antibodies produced by the infiltrating B-cells reacts is the in situ equivalent of classical serology that informs about the nature of an infectious process irrespective of whether the antibody itself is pathogenic. Thus, although one can debate the pathophysiologic consequences of the appearance of the B-cell clusters themselves in the kidney, the infectious process that initiates their homing and proliferation is very likely to be harmful by a variety of mechanisms including production of proinflammatory cytokines and chemokines when the TLR is activated (46). While much study will be necessary to validate the role, if any, of infection in chronic kidney rejection, such confirmation would be important because

it would suggest that in patients who have rising titers of anti-LPS antibodies, the graft might be saved by a course of antibiotics.

Material and Methods

The methods used for immunochemical analysis, analytical procedures and inhibition of LPS activity are detailed in *SI Material and Methods*.

1. Meier-Kriesche HU, Schold JD, Kaplan B (2004) Long-term renal allograft survival: have we made significant progress or is it time to rethink our analytic and therapeutic strategies? *Am J Transplant* 4:1289–1295.
2. Naesens M, et al. (2011) Progressive histological damage in renal allografts is associated with expression of innate and adaptive immunity genes. *Kidney Int* 80:1364–1376.
3. Cheng J, et al. (2011) Ectopic B-cell clusters that infiltrate transplanted human kidneys are clonal. *Proc Natl Acad Sci USA* 108:5560–5565.
4. Zarkhin V, Chalasani G, Sarwal MM (2010) The yin and yang of B cells in graft rejection and tolerance. *Transplant Rev (Orlando)* 24:67–78.
5. Li L, et al. (2009) Identifying compartment-specific non-HLA targets after renal transplantation by integrating transcriptome and “antibodyome” measures. *Proc Natl Acad Sci USA* 106:4148–4153.
6. Nath DS, Basha HI, Mohanakumar T (2010) Antihuman leukocyte antigen antibody-induced autoimmunity: role in chronic rejection. *Curr Opin Organ Transplant* 15:16–20.
7. Zarkhin V, et al. (2008) Characterization of intra-graft B cells during renal allograft rejection. *Kidney Int* 74:664–673.
8. Heller F, et al. (2007) The contribution of B cells to renal interstitial inflammation. *Am J Pathol* 170:457–468.
9. Thauunat O, Patey N, Morelon E, Michel JB, Nicoletti A (2006) Lymphoid neogenesis in chronic rejection: the murderer is in the house. *Curr Opin Immunol* 18:576–579.
10. Segerer S, Schlondorff D (2008) B cells and tertiary lymphoid organs in renal inflammation. *Kidney Int* 73:533–537.
11. Thauunat O, et al. (2010) Chronic rejection triggers the development of an aggressive intragraft immune response through recapitulation of lymphoid organogenesis. *J Immunol* 185:717–728.
12. Carragher DM, Rangel-Moreno J, Randall TD (2008) Ectopic lymphoid tissues and local immunity. *Semin Immunol* 20:26–42.
13. Sarwal M, et al. (2003) Molecular heterogeneity in acute renal allograft rejection identified by DNA microarray profiling. *N Engl J Med* 349:125–138.
14. Moreso F, et al. (2007) Immunophenotype of glomerular and interstitial infiltrating cells in protocol renal allograft biopsies and histological diagnosis. *Am J Transplant* 7:2739–2747.
15. Eckl-Dorna J, Batista FD (2009) BCR-mediated uptake of antigen linked to TLR9 ligand stimulates B-cell proliferation and antigen-specific plasma cell formation. *Blood* 113:3969–3977.
16. Lopatin DE, Mangan DF, Horner IS, Peebles FL (1980) Mitogen-induced amplification of blastogenesis in lipopolysaccharide-precultured lymphocytes. *Infect Immun* 29:512–519.
17. Sieling PA, Chung W, Duong BT, Godowski PJ, Modlin RL (2003) Toll-like receptor 2 ligands as adjuvants for human Th1 responses. *J Immunol* 170:194–200.
18. Marshak-Rothstein A (2006) Toll-like receptors in systemic autoimmune disease. *Nat Rev Immunol* 6:823–835.
19. Minguet S, et al. (2008) Enhanced B-cell activation mediated by TLR4 and BCR cross-talk. *Eur J Immunol* 38:2475–2487.
20. Lau CM, et al. (2005) RNA-associated autoantigens activate B cells by combined B cell antigen receptor/Toll-like receptor 7 engagement. *J Exp Med* 202:1171–1177.
21. Viglianti GA, et al. (2003) Activation of autoreactive B cells by CpG dsDNA. *Immunity* 19:837–847.
22. Leadbetter EA, et al. (2002) Chromatin-IgG complexes activate B cells by dual engagement of IgM and Toll-like receptors. *Nature* 416:603–607.
23. Brightbill HD, et al. (1999) Host defense mechanisms triggered by microbial lipoproteins through toll-like receptors. *Science* 285:732–736.
24. Quintana FJ, Solomon A, Cohen IR, Nussbaum G (2008) Induction of IgG3 to LPS via Toll-like receptor 4 co-stimulation. *PLoS One* 3:e3509.
25. Vordermeier M, Stab K, Bessler WG (1986) A defined fragment of bacterial protein I (OmpF) is a polyclonal B-cell activator. *Infect Immun* 51:233–239.
26. Yao SY, Stratton CW, Mitchell WM, Sriram S (2001) CSF oligoclonal bands in MS include antibodies against Chlamydomonas antigens. *Neurology* 56:1168–1176.
27. Wotherspoon AC, et al. (1993) Regression of primary low-grade B-cell gastric lymphoma of mucosa-associated lymphoid tissue type after eradication of Helicobacter pylori. *Lancet* 342:575–577.
28. Wundisch T, et al. (2003) Etiology and therapy of Helicobacter pylori-associated gastric lymphomas. *Ann Hematol* 82:535–545.
29. Bertoni F, Zucca E (2006) Delving deeper into MALT lymphoma biology. *J Clin Invest* 116:22–26.
30. Zullo A, et al. (2009) Eradication therapy for Helicobacter pylori in patients with gastric MALT lymphoma: A pooled data analysis. *Am J Gastroenterol* 104:1932–1937 quiz 1938.
31. Lee HK, Lee J, Tobias PS (2002) Two lipoproteins extracted from Escherichia coli K-12 LCD25 lipopolysaccharide are the major components responsible for Toll-like receptor 2-mediated signaling. *J Immunol* 168:4012–4017.
32. Raetz CR, Reynolds CM, Trent MS, Bishop RE (2007) Lipid A modification systems in gram-negative bacteria. *Annu Rev Biochem* 76:295–329.
33. Raetz CR, et al. (2006) Kdo2-Lipid A of Escherichia coli, a defined endotoxin that activates macrophages via TLR-4. *J Lipid Res* 47:1097–1111.
34. Baba T, et al. Construction of Escherichia coli K-12 in-frame, single-gene knockout mutants: The Keio collection. *Mol Syst Biol* 2:20060008.
35. Porat YB, Zan-Bar I, Ravid A (1995) Quantitative dot-blot assay for low titer anti-lipopolysaccharide antibodies in human plasma. *J Immunol Methods* 180:213–218.
36. Pollack M, Raubitschek AA, Larrick JW (1987) Human monoclonal antibodies that recognize conserved epitopes in the core-lipid A region of lipopolysaccharides. *J Clin Invest* 79:1421–1430.
37. Cross AS, Sidberry H, Sadoff JC (1989) The human antibody response during natural bacteremic infection with gram-negative bacilli against lipopolysaccharide core determinants. *J Infect Dis* 160:225–236.
38. Di Padova FE, et al. (1993) A broadly cross-protective monoclonal antibody binding to Escherichia coli and Salmonella lipopolysaccharides. *Infect Immun* 61:3863–3872.
39. Brooks CL, et al. (2010) Antibodies raised against chlamydial lipopolysaccharide antigens reveal convergence in germline gene usage and differential epitope recognition. *Biochemistry (Mosc)* 49:570–581.
40. Saemann M, Horl WH (2008) Urinary tract infection in renal transplant recipients. *Eur J Clin Invest* 2(38 Suppl):58–65.
41. Mattsby-Baltzer I, et al. (1982) Experimental Escherichia coli ascending pyelonephritis in rats: Changes in bacterial properties and the immune response to surface antigens. *Infect Immun* 35:639–646.
42. Misselwitz J, Neubert H, Horn A, Erlen W (1986) Lipid-A-antibodies—indicators for the risk of renal scarring in children with urinary tract infection. *Acta Paediatr Scand* 75:982–987.
43. Mattsby-Baltzer I, et al. (1981) Antibodies to lipid A during urinary tract infection. *J Infect Dis* 144:319–328.
44. Marrs CF, Zhang L, Foxman B (2005) Escherichia coli mediated urinary tract infections: Are there distinct uropathogenic E. coli (UPEC) pathotypes? *FEMS Microbiol Lett* 252:183–190.
45. Johnson JR, et al. (2010) Escherichia coli sequence type ST131 as an emerging fluoroquinolone-resistant uropathogen among renal transplant recipients. *Antimicrob Agents Chemother* 54:546–550.
46. Gluba A, et al. (2010) The role of Toll-like receptors in renal diseases. *Nat Rev Nephrol* 6:224–235.