

## **UC Merced**

### **Journal of California and Great Basin Anthropology**

#### **Title**

Front Cover

#### **Permalink**

<https://escholarship.org/uc/item/88r540v3>

#### **Journal**

Journal of California and Great Basin Anthropology, 2(2)

#### **ISSN**

0191-3557

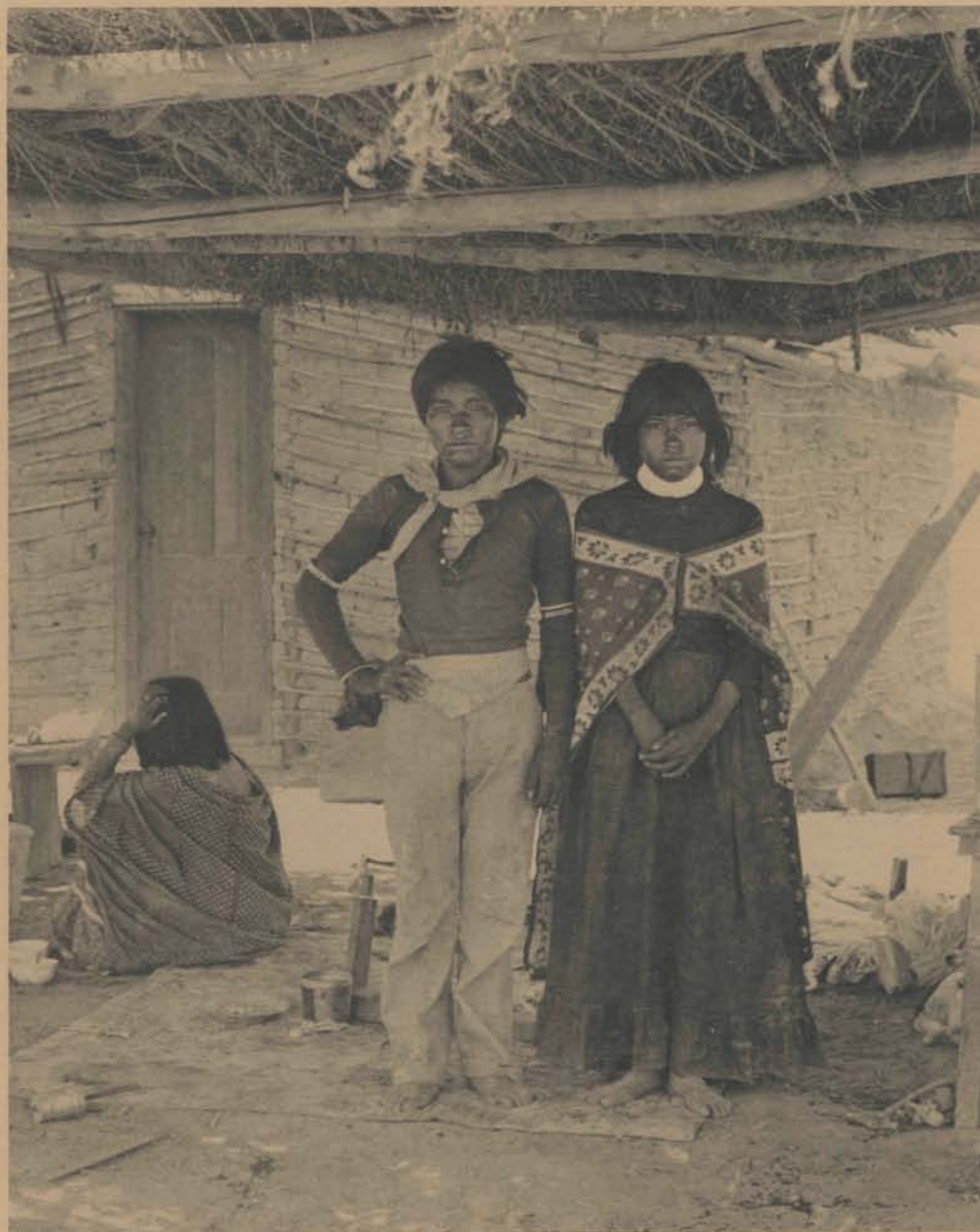
#### **Publication Date**

1980-12-01

Peer reviewed

Journal of  
California and Great Basin  
Anthropology

Vol. 2, No. 2 Winter 1980





# JOURNAL OF CALIFORNIA AND GREAT BASIN ANTHROPOLOGY

(Formerly The Journal of California Anthropology)

*Editor:*

Harry W. Lawton  
University of California, Riverside

*Managing Editor:*

Philip J. Wilke  
University of California, Riverside

*Assistant Editors:*

Matthew C. Hall  
University of California, Riverside

James D. Swenson  
University of California, Riverside

*Reviews Editor:*

Helen McCarthy  
University of California, Davis

*Photography Editor:*

Robert A. Hicks  
University of California, Riverside

*Photo History Editor:*

Peter E. Palmquist  
Humboldt State University, Arcata



*Circulation Staff:*

Jean Fenne  
Anne B. Jennings  
Mary A. Sartin

*Board of Editors:*

C. Melvin Aikens  
University of Oregon

Martin A. Baumhoff  
University of California, Davis

Lowell John Bean  
California State University, Hayward

Don D. Fowler  
University of Nevada, Reno

David A. Fredrickson  
Sonoma State University, Rohnert Park

Margaret Langdon  
University of California, San Diego

Katherine Siva Saubel  
Malki Museum, Banning

*Art Editor:*

Georgia Lee  
Santa Barbara, California

*Circulation Manager:*

Amy Henderson

Articles appearing in this journal are abstracted in *America: History and Life*.

The *Journal of California and Great Basin Anthropology* is published by Malki Museum, Inc., 11-795 Fields Road, Morongo Indian Reservation, Banning, CA 92220, under the auspices of the Malki Museum Press Editorial Board, and in cooperation with the Department of Anthropology, University of California, Riverside. Editorial offices are at the University of California, Riverside, except for the office of the Reviews Editor, which is at the Department of Anthropology, University of California, Davis. The *Journal* is typeset and laid out by the Byrnes Company, Riverside, California, and printed by BookCrafters, Inc., Chelsea, Michigan. The publisher, Malki Museum, Inc., is a non-profit educational institution incorporated by the State of California.

The *Journal of California and Great Basin Anthropology* gratefully acknowledges support from the College of Humanities and Social Sciences and the Department of Anthropology, University of California, Riverside.

**Journal of California and Great Basin Anthropology**

Copyright© 1980 by Malki Museum, Inc.

Morongo Indian Reservation

Banning, CA 92220

Cover Photograph Copyright© 1980 by Kristina W. Foss

Printed in the United States of America

ISSN 0191-3557