

# UC Irvine

## UC Irvine Previously Published Works

### Title

A digital PCR-based protocol to detect and quantify RNA editing events at hotspots

### Permalink

<https://escholarship.org/uc/item/89q420vb>

### Journal

STAR Protocols, 3(1)

### ISSN

2666-1667

### Authors

Oh, Sunwoo  
Buisson, Rémi

### Publication Date

2022-03-01

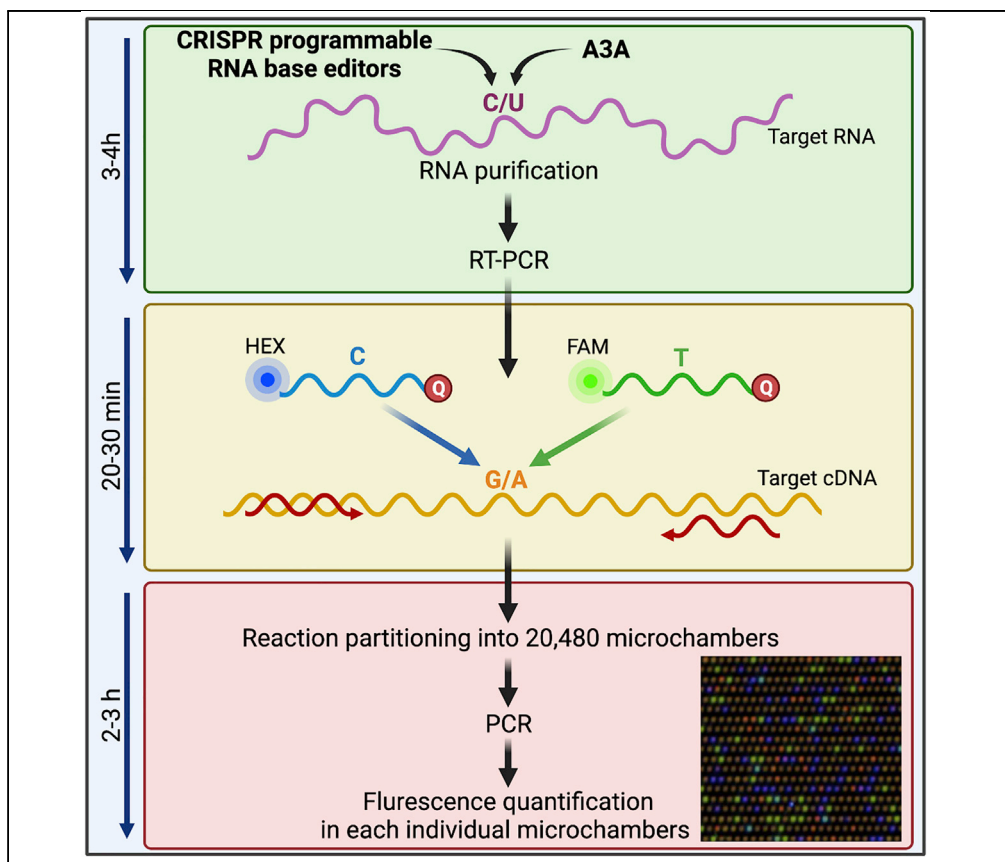
### DOI

10.1016/j.xpro.2022.101148

Peer reviewed

## Protocol

# A digital PCR-based protocol to detect and quantify RNA editing events at hotspots



Sunwoo Oh, Rémi Buisson

rbusson@uci.edu

### Highlights

Absolute quantification of RNA-editing events at hotspots

Sensitive assay to detect rare RNA-editing events in a sample

Adaptable to any type of cell lines or patient samples

Technique compatible with samples containing low amounts of RNA

APOBEC3A, CRISPR programmable RNA base editors, or other enzymes can edit RNA transcripts at specific locations or hotspots. Precise quantification of these RNA-editing events is crucial to determine the activity and efficiency of these enzymes in cells. We have developed a quick method to quantify RNA-editing activity using digital PCR, a sensitive and quantitative technique to detect rare mutations by micro-partitioning bulk PCR reactions. This assay allows rapid absolute quantification of RNA editing events in cell lines or patient samples.

Oh & Buisson, STAR Protocols  
3, 101148

March 18, 2022 © 2022 The Authors.

<https://doi.org/10.1016/j.xpro.2022.101148>



## Protocol

## A digital PCR-based protocol to detect and quantify RNA editing events at hotspots

Sunwoo Oh<sup>1,2</sup> and Rémi Buisson<sup>1,2,3,4,5,\*</sup><sup>1</sup>Department of Biological Chemistry, School of Medicine, University of California Irvine, Irvine, CA 92697, USA<sup>2</sup>Chao Family Comprehensive Cancer Center, University of California Irvine, Irvine, CA 92697, USA<sup>3</sup>Department of Pharmaceutical Sciences, School of Pharmacy and Pharmaceutical Sciences, University of California Irvine, Irvine, CA 92697, USA<sup>4</sup>Technical contact<sup>5</sup>Lead contact\*Correspondence: [rbuisson@uci.edu](mailto:rbuisson@uci.edu)  
<https://doi.org/10.1016/j.xpro.2022.101148>

## SUMMARY

**APOBEC3A, CRISPR programmable RNA base editors, or other enzymes can edit RNA transcripts at specific locations or hotspots. Precise quantification of these RNA-editing events is crucial to determine the activity and efficiency of these enzymes in cells. We have developed a quick method to quantify RNA-editing activity using digital PCR, a sensitive and quantitative technique to detect rare mutations by micro-partitioning bulk PCR reactions. This assay allows rapid absolute quantification of RNA editing events in cell lines or patient samples. For complete details on the use and execution of this protocol, please refer to Jalili et al. (2020) and Oh et al. (2021).**

## BEFORE YOU BEGIN

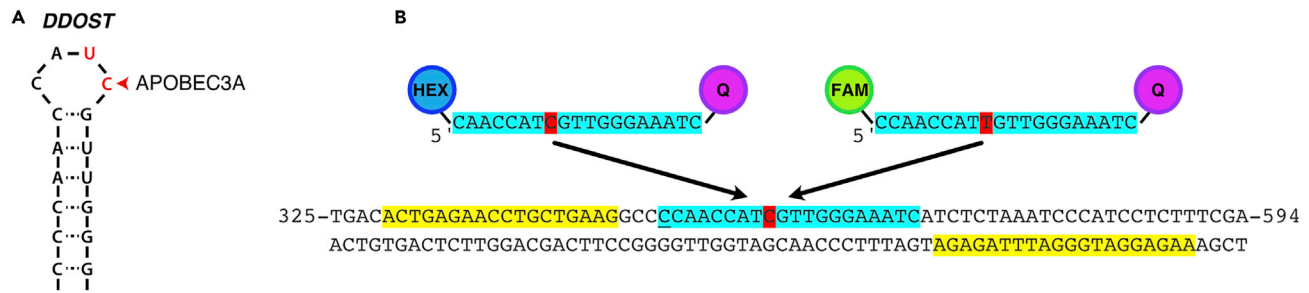
This protocol aims to detect and quantify RNA editing events in culture cells or patient tumor samples using a digital PCR-based method. To illustrate this assay, we focus here on a specific RNA editing event caused by APOBEC3A activity in cells (Jalili et al., 2020; Isozaki et al., 2021; Oh et al., 2021). However, this protocol can be applied to monitor any RNA editing events from other types of enzymes or CRISPR programmable RNA base editors (Cox et al., 2017; Rees and Liu, 2018) that induce RNA mutations at a specific location.

## Overview

APOBEC3A, a DNA and RNA cytidine deaminase that contributes to mutagenesis in tumors, is transiently expressed in cancer cells after viral infection or many other different genotoxic stresses (Stenglein et al., 2010; Sharma et al., 2015; Buisson et al., 2019; Oh et al., 2021). We have previously shown that APOBEC3A uniquely generates RNA mutations by promoting the deamination of C to U in specific RNA stem-loop structures (Jalili et al., 2020). Contrary to DNA mutations, RNA mutations are not inherited through genome duplications and are rapidly degraded. Thus, monitoring RNA mutations at hotspots provides a unique opportunity to measure the ongoing activities of APOBEC3A in cells or patient tumor samples (Jalili et al., 2020).

We previously found that the point mutation  $DDOST^{558C>U}$  is the most frequent RNA hotspot mutation generated by APOBEC3A in patient tumors (Jalili et al., 2020).  $DDOST^{558C>U}$  point mutation is located inside a loop of a stem-loop structure formed by *DDOST* mRNA and creates an optimal substrate for APOBEC3A activity (Figure 1A) (Jalili et al., 2020). For this reason, we selected  $DDOST^{558C>U}$  as a target to monitor APOBEC3A-mediated RNA editing activity and developed a





**Figure 1. APOBEC3A promotes RNA editing at a specific stem-loop structure in the gene DDOST**

(A) Schematic representation of the stem-loop structure in the mRNA of *DDOST*, the most highly APOBEC-edited RNA site in patient tumor samples. (B) Design of the PCR primers and probes used to monitor *DDOST*<sup>T558C>U</sup> RNA editing event. The primer and probe sequences are designed from the genomic sequence of *DDOST*.

digital PCR (dPCR) assay to specifically and quantitatively measure the level of this RNA editing event in cancer cells or patient tumors (Jalili et al., 2020).

dPCR is a sensitive and quantitative method to detect SNPs, rare mutations, copy number variations, and gene rearrangements. dPCR is based on the PCR reaction being partitioned into thousands of individual microchambers, making it equivalent to running thousands of PCR reactions simultaneously. After PCR amplification, the microchambers are individually assessed for fluorescence, and following the Poisson distribution that describes incidence rate, an absolute quantification of the template sequence is determined. Importantly, two or more fluorescent probes can be used simultaneously to determine the absolute proportions of two sequence variants in a population of molecules (Dobnik et al., 2018; Quan et al., 2018).

To quantify RNA editing induced by APOBEC3A or other types of RNA editing systems, we have developed a dPCR-based method in which we explain how to (1) purify RNAs and reverse transcribe to DNA; (2) combine the sample with two fluorescence probes that recognize either the wild-type or the edited sequence of the region of interest; (3) run the digital PCR to partition the reactions into thousands of individual micro-reactions and individually assess the fluorescence in each of these reactions; (4) analyze the fluorescent signal to quantify the level of edited RNA in the samples using a Poisson correction.

### Primer and probe design for digital PCR

⌚ Timing: 1–3 weeks before the experiment

The dPCR assay to quantify RNA editing activity consists of a set of primers and a set of fluorescent probes. The primers amplify the full region surrounding the edited event. For example, the primer sequences used to amplify the surrounding region of the *DDOST* edited site by APOBEC3A (*DDOST*<sup>T558C>U</sup>) are highlighted in yellow (Figure 1B). Meanwhile, the fluorescent probes (highlighted in blue) bind directly to the sequence including the edited site (distinguished in red). These probes are designed to specifically recognize either the wild-type (WT) or mutated sequence and have a reporter dye (HEX or FAM) attached at the 5' end and a quencher dye (Q: Iowa Black) attached at the 3' end of it. (Figure 1B). During the PCR reaction, the DNA polymerase will degrade the probes that are hybridized to the target sequence through its 5'-exonuclease activity. When the FAM or HEX dye molecules are released from the probes and thus no longer in close proximity to the quencher, they can be detected and quantified.

⚠ **CRITICAL:** Both probes need to be very specific to their respective target sequences that differ in only one nucleotide. We recommend testing several sets of probes on a synthetic substrate (e.g. 200 nucleotides synthetic oligonucleotide) (see "primer and probe

optimization for digital PCR” section for an example of how to test the specificity of the probes and to determine false positive signal).

**Note:** We recommend that the probes have less than 30 nucleotides between the fluorophore and the quencher to avoid affecting baseline signal intensity. The probe must not have a G at its 5' end because this may quench the fluorescent signal even after hydrolysis. When possible, it is recommended that the fluorescent probes targeting the point mutation have a higher melting temperature ( $T_m$ ) than the primers used to amplify the region of interest. The sequence length of the probes can be slightly different to increase the specificity of each probe [e.g. underlined C at the 5' end of the probe targeting DDOST<sup>T558</sup> (Figure 1B)]

### Culture cell lines and cell treatment

⌚ Timing: 1–3 days before the experiment

To mimic the induction of APOBEC3A expression by exogenous or endogenous stresses, we transfect cells with 3p-hpRNA oligonucleotide, a well-characterized agonist of RIG-I. RIG-I activation triggers APOBEC3A expression through an interferon response by recruiting STAT2 to APOBEC3A promoter (Oh et al., 2021). Cells overexpressing APOBEC3A can be used as a positive control when monitoring its activity in samples with unknown APOBEC3A levels.

1. Plate cell line of interest in a 20 mm culture dish (180,000 cells).

**Note:** The number of cells needs to be adjusted in the function of the cell line used to obtain between 60% and 70% confluency the following day.

2. The next day, transfect the cells with 3p-hpRNA (e.g., 400 ng/mL for BICR6 cells)

**Note:** We adjust the concentration of 3p-hpRNA according to each cell line. We have found that MCF10A is more sensitive to 3p-hpRNA, so we have lowered the concentration of 3p-hpRNA to 40 ng/mL.

- a. Change the media of the cells about 1 h before transfection with 2 mL of fresh culture media without penicillin/streptomycin.

**Note:** We established this protocol with the BICR6 or the MCF10A cell lines. BICR6 are cultured in DMEM/F12 GlutaMAX-I supplemented with 10% fetal bovine serum (FBS) and 1% penicillin/streptomycin. MCF10A are cultured in DMEM/F12 GlutaMAX-I supplemented with 5% horse serum, 20 ng/mL epidermal growth factor, 0.5 µg/mL hydrocortisone, 100 ng/mL cholera toxin, 10 µg/mL insulin, and 1% penicillin/streptomycin.

**Note:** We have found that culture media with penicillin/streptomycin affects the transfection efficiency of 3p-hpRNA.

**Alternatives:** Other types of oligonucleotides such as poly(I:C) can be used to trigger APOBEC3A expression. However, we have noticed that the transfection of poly(I:C) causes higher level of cell death.

- b. Transfect each well with 3p-hpRNA oligonucleotide by using Lipofectamine 2000 (Thermo Fisher Scientific) per manufacturer's instruction. Per reaction:
  - i. Mix 250 µL of Opti-MEM medium and 5 µL of Lipofectamine 2000 in Tube 1
  - ii. Mix 250 µL of Opti-MEM medium and 3p-hpRNA in Tube 2
  - iii. Add Tube 1 to Tube 2 and mix well by pipetting or slowly vortexing for 5s

- iv. Incubate for 20 min at room temperature (18°C–22°C)
- v. Add drop by drop the transfection complex to the cells
- c. Exchange the cell media with fresh media containing penicillin/streptomycin 8 h–16 h after transfection.

**Note:** We have found that APOBEC3A expression is optimal between 24 h and 48 h following 3p-hpRNA transfection.

**Alternatives:** To overexpress APOBEC3A, cells can be also transiently transfected with a plasmid or through the use of an integrated doxycycline (DOX)-inducible system. We have previously generated doxycycline (DOX)-inducible U2OS-derived cell lines that express wild-type A3A (A3A<sup>WT</sup>) or catalytically inactive APOBEC3A mutant (A3A<sup>E72A</sup>) to demonstrate the specificity of APOBEC3A RNA editing activity at the DDOST<sup>558</sup> hotspot (Buisson et al., 2017; Jalili et al., 2020).

**Note:** Similar cell culture and transfection methods can be used for other CRISPR programmable RNA base editors or other RNA editing enzymes but have not yet been tested.

## KEY RESOURCES TABLE

REAGENT or RESOURCE	SOURCE	IDENTIFIER
<b>Chemicals, peptides, and recombinant proteins</b>		
3p-hpRNA	InvivoGen	Cat#tlrl-hprna
Lipofectamine 2000	Thermo Fisher Scientific	Cat#11668-019
RNAse free ddH <sub>2</sub> O	Thermo Fisher Scientific	Cat#AM9937
Fetal bovine serum	Thermo Fisher Scientific	Cat#10437-036
Penicillin/streptomycin	Corning	Cat#30-002-CI
Opti-MEM	Thermo Fisher Scientific	Cat# 31985070
DMEM/F12 GlutaMAX-I	Thermo Fisher Scientific	Cat#10565-018
Horse serum	Thermo Fisher Scientific	Cat#16050-122
Epidermal growth factor	PeptoTech	Cat#af-100-15
Hydrocortisone	Millipore Sigma	Cat#H0888
Cholera toxin from <i>Vibrio cholerae</i>	Millipore Sigma	Cat#C8052
Insulin from bovine pancreas	Millipore Sigma	Cat#I-1882
<b>Critical commercial assays</b>		
Quick-RNA MiniPrep Kit	Zymo Research	Cat# R1055
High-Capacity cDNA Reverse Transcription Kit	Thermo Fisher Scientific	Cat#4368813
QuantStudio Absolute Q Isolation Buffer	Thermo Fisher Scientific	Cat#A52730
Absolute Q DNA Digital PCR Master Mix	Thermo Fisher Scientific	Cat#A52490
<b>Experimental models: Cell lines</b>		
BICR6	Millipore Sigma	Cat#05070501
MCF10A	Daniel Haber laboratory	n/a
U2OS complemented with A3A wild-type	Buisson et al. (2017)	n/a
U2OS complemented with A3A E72A	Buisson et al. (2017)	n/a
<b>Oligonucleotides</b>		
DDOST Forward	Bio-Rad	n/a
DDOST Reverse	Bio-Rad	n/a
DDOST <sup>C558</sup> Probe	Bio-Rad	n/a
DDOST <sup>T558</sup> Probe	Bio-Rad	n/a
<b>Software and algorithms</b>		
QuantStudio Absolute Q Analysis Software	Thermo Fisher Scientific	Cat# A52864
<b>Other</b>		
QuantStudio Absolute Q Digital PCR System	Thermo Fisher Scientific	Cat# A52864
QuantStudio MAP16 Digital PCR Plate and Gasket Strips	Thermo Fisher Scientific	Cat# A52865

## MATERIALS AND EQUIPMENT

### DDOST primer and probe sequences

DDOST Forward Sequence: ACTGAGAACCTGCTGAAG

DDOST Reverse Sequence: AAGAGGATGGGATTTAGAGA

DDOST<sup>C558</sup> Probe Sequence: 5'-(HEX)-CAACCATCGTTGGGAAATC-(Q)-3'

DDOST<sup>T558</sup> Probe Sequence: 5'-(FAM)-CCAACCATTGTTGGGAAATC-(Q)-3'

**Note:** Primers and probes with fluorophores and quenchers can be obtained directly from different manufacturers such as IDT, Bio-Rad, or Thermo Fisher Scientific.

### Synthetic DDOST oligonucleotide sequences

DDOST<sup>C558</sup>: 5-AAACGGCTGCATTGACCATCACAACCTATGACATCTCAGACCTTGGCCAGCATA CGCTCATCGTGGCTGACACTGAGAACCTGCTGAAGGCCCAACCATCGTTGGGAAATCATCTCT AAATCCCATCCTCTTTTCGAGGTGTTGGGATGGTGGCCGATCCTGATAACCCTTTGGTGCTGGAC ATCCTGACGGGCTCTTCCA-3'

DDOST<sup>T558</sup>: 5'-AAACGGCTGCATTGACCATCACAACCTATGACATCTCAGACCTTGGCCAGCATA CGCTCATCGTGGCTGACACTGAGAACCTGCTGAAGGCCCAACCATTGTTGGGAAATCATCTCT AAATCCCATCCTCTTTTCGAGGTGTTGGGATGGTGGCCGATCCTGATAACCCTTTGGTGCTGGAC ATCCTGACGGGCTCTTCCA-3'

#### Reverse transcription (RT) reaction mix

Reagent	Final concentration	Amount
RT buffer (10×)	2×	2 μL
RT Random Primers (10×)	2×	2 μL
dNTP Mix (25×)	2×	0.8 μL
ddH <sub>2</sub> O	n/a	4.2 μL
MultiScribe Reverse Transcriptase (20×; 50 U/μL)	2×	1 μL
<b>Total</b>	<b>n/a</b>	<b>10 μL</b>

△ **CRITICAL:** The 2× RT-PCR reaction mix needs to be made just before starting the PCR reaction and maintained at 4°C before use.

**Note:** The given reaction mix is for one sample. We recommend preparing a master mix for the number of samples to analyze plus one. 10 μL of RNA will be added to this 2× reaction mixture as described in step 2 under “RNA purification and generation of complementary DNA” section.

**Alternatives:** In this protocol, we used High-Capacity cDNA Reverse Transcription Kit (Thermo Fisher Scientific). However, other types of RT-PCR master mix can be used but have not been tested.

#### Digital PCR (dPCR) reaction mix

Reagent	Final concentration	Amount
Absolute Q DNA Digital PCR Master Mix (5×)	1×	1.8 μL
DDOST WT target probe (HEX) (10×)	1×	0.9 μL
DDOST mutant target probe (FAM) (10×)	1×	0.9 μL
ddH <sub>2</sub> O	n/a	4.4 μL
cDNA	n/a	1 μL
<b>Total</b>	<b>n/a</b>	<b>9 μL</b>

△ **CRITICAL:** The dPCR reaction mix needs to be made just before starting the dPCR reaction and maintained at 4°C before use.

△ **CRITICAL:** The probes are light-sensitive. It is important to minimize exposure to light.

**Note:** We recommend preparing a master mix (8 µL per sample without cDNA) for all the samples to analyze plus one. cDNA (1 µL) will be added later in step 4 under “digital PCR reaction mix” section.

**Note:** The final concentration (1 ×) of the primers is 900 nM each and 250 nM for each probe.

**Alternatives:** In this protocol, we used Absolute Q DNA Digital PCR Master Mix (Thermo Fisher Scientific). However, other types of digital PCR master mix can be used but have not been tested.

## STEP-BY-STEP METHOD DETAILS

**Note:** The method described below has been specifically optimized for the QuantStudio Absolute Q Digital PCR platform from Thermo Fisher Scientific.

**Alternatives:** The method described below can be successfully adapted to other commercially available digital PCR systems such as the QIAcuity dPCR platform from Qiagen or the droplet digital PCR platform from Bio-Rad. The QIAcuity dPCR platform uses similar technology as the one described here with the QuantStudio Absolute Q Digital PCR platform but has not been tested. Additional information on how to adapt this method to the QX200 Droplet Digital PCR (ddPCR) System from Bio-Rad can be found in [Jalili et al. \(2020\)](#).

## RNA purification and generation of complementary DNA

⌚ **Timing:** 3–4 h

This step describes how to purify RNAs from cells and perform reverse transcription to generate the cDNA required for the dPCR reaction step.

1. Collect the cells for RNA purification.
  - a. Wash the cells twice with 2 mL of PBS.
  - b. Add 300 µL of RNA lysis buffer (R1060-1-100; Zymo) directly onto the cells, mix, and collect lysed cells in a Non-Stick RNase-free 1.5 mL microfuge tube.

⏸ **Pause point:** Lysed cells can be stored at –80°C for at least a month without compromising the results.

- c. Perform RNA purification according to the manufacturer’s protocol. This protocol uses a Zymo Quick RNA mini-prep kit.

**Alternatives:** RNA purification using a TRIzol-based method as well as RNA purification kits from other manufacturers can also be used but have not been tested.

- d. Quantify purified RNA using a Nanodrop spectrometer (Thermo Fisher Scientific) or equivalent.

**Note:** We recommend using a Qubit fluorometer (Thermo Fisher Scientific) or equivalent to determine the RNA concentration for samples with low RNA concentrations (below 10 ng/µL).



△ **CRITICAL:** When working with RNA, it is important to avoid contamination with RNases. We recommend adopting laboratory practices that minimize contamination with RNases such as wearing gloves and using RNase-free tubes, filter tips, water, and other reagents. We also recommend using RNase decontamination solution to clean the workspace.

▮▮ **Pause point:** Purified RNA can be stored at  $-80^{\circ}\text{C}$  for at least a month without compromising the results.

2. Perform a reverse transcription reaction on the purified RNA samples.
  - a. Add 500 ng of purified RNA diluted in 10  $\mu\text{L}$  of RNase free ddH<sub>2</sub>O to 10  $\mu\text{L}$  RT-PCR reaction mix (total volume 20  $\mu\text{L}$ ). This protocol uses a High-Capacity cDNA Reverse Transcription Kit (Thermo Fisher Scientific).

**Note:** While we recommend using 500 ng of purified RNA in the RT reaction, it is possible to use less RNA from a few ng to 500 ng without compromising the results.

- b. Start the RT-PCR reaction (step 1: 10 min at  $20^{\circ}\text{C}$ , step 2: 2h at  $37^{\circ}\text{C}$ , step 3: 5 min at  $85^{\circ}\text{C}$ , step 4: hold at  $4^{\circ}\text{C}$ ).

**Note:** The generation of cDNA may be verified by performing PCR or qPCR with primers targeting the gene of interest or a housekeeping gene.

▮▮ **Pause point:** cDNA can be stored at  $-20^{\circ}\text{C}$  or  $-80^{\circ}\text{C}$  for at least a month without compromising the results.

### Digital PCR reaction mix

⌚ **Timing:** 20–30 min

This step describes how to prepare a digital PCR reaction and properly load the samples into a digital PCR plate.

3. Dilute the cDNA 4 to 32-fold in RNase free ddH<sub>2</sub>O.

△ **CRITICAL:** Samples that are not sufficiently diluted will result in a saturation of the micro-chambers with the target DNA that will preclude calculating an accurate percentage of editing events in the sample. [Troubleshooting 1](#)

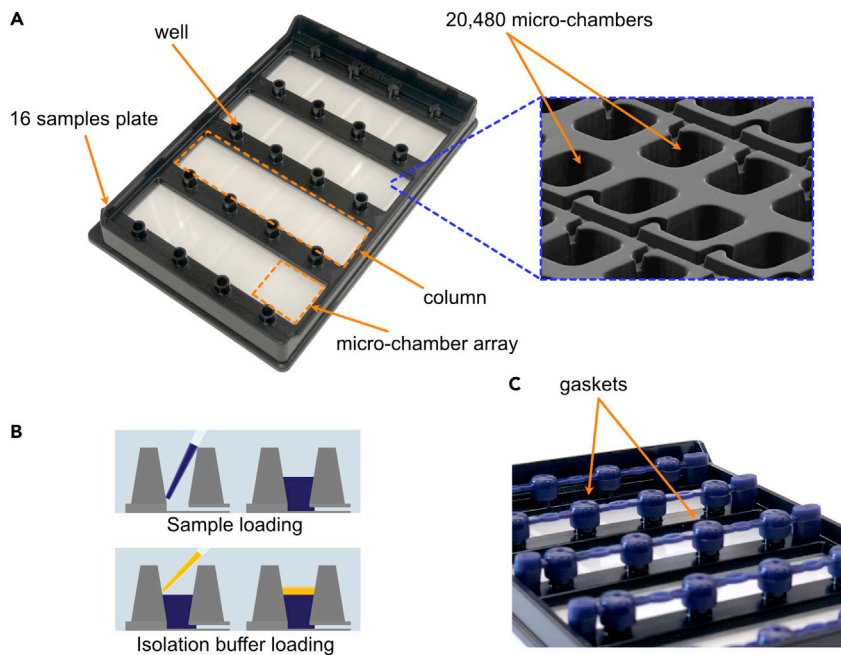
**Note:** This dilution factor has been optimized for cDNA obtained from BICR6 cells (see step 2). Because the expression level of *DDOST* mRNA may vary between cell lines, we recommend adjusting the dilution when using other cell lines.

4. Add 1  $\mu\text{L}$  of diluted cDNA to 8  $\mu\text{L}$  of dPCR reaction mix.

△ **CRITICAL:** Probes are light-sensitive. Avoid exposure to light.

5. Load 9  $\mu\text{L}$  of the PCR mix to the bottom of the well of the dPCR plate following the steps described in [Figures 2A](#) and [2B](#).

△ **CRITICAL:** Centrifuge the PCR mix at 10,000g for 1–2 minutes before loading in the plate. We have found that centrifuging the samples eliminates any micro debris that potentially affects the micro-partitioning of the PCR reactions. [Troubleshooting 2](#)



**Figure 2. Samples loading on a digital PCR plate**

(A) Right; Picture of a digital PCR plate and its indicated compartments. Left; Zoom in on some of the 20,480 microchambers present in the partition array.

(B) Schematic explanation of how to load a sample in a well of the digital PCR plate.

(C) Picture of a digital PCR plate with the gaskets.

6. Load 15  $\mu$ L of the isolation buffer overlay for each well (Figure 2B).

△ **CRITICAL:** Do not puncture the thin membrane at the bottom of the well.

△ **CRITICAL:** Use a new tip to load the isolation buffer for each well to avoid cross-contamination between wells and load the samples in the wells using a 45° angle to avoid the formation of bubbles.

△ **CRITICAL:** A minimum of 1 full column (Figure 2A) needs to be filled with samples in a dPCR plate. For any unused well in a column to be run, add 24  $\mu$ L of isolation buffer.

7. Apply 5 gaskets to close all the wells from the plates (Figure 2C)

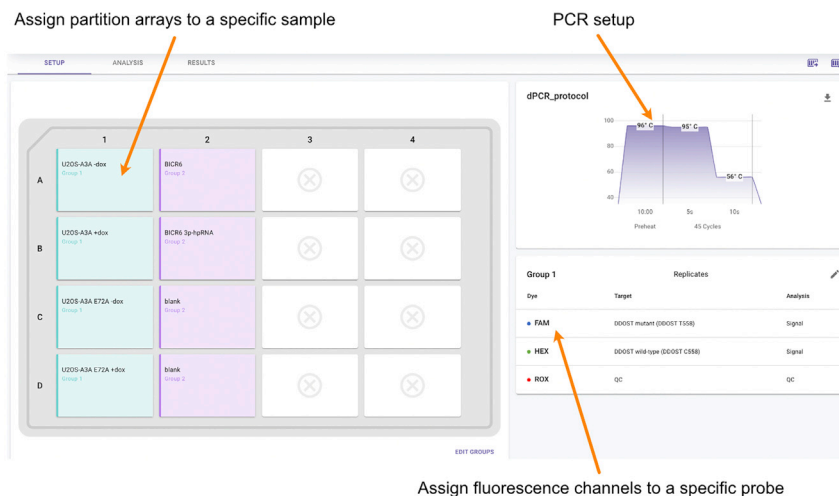
△ **CRITICAL:** Even if not all columns are used, apply gaskets across all of the wells of the plate as shown in Figure 2C. There are 4 columns of wells plus a last column in the plate (that is not used to load samples) that need to be capped with gaskets.

### Digital PCR set up

⌚ Timing: 1.5–2 h

This step describes how to load a digital PCR plate and use the QuantStudio Absolute Q Digital PCR System to analyze the samples by digital PCR.

8. Insert the plates into the QuantStudio Absolute Q Digital PCR System.



**Figure 3. Digital PCR set up**

Example of a setup page obtained from QuantStudio Absolute Q Digital PCR Software to assign the samples to be analyzed on the digital plate, the fluorescence dyes associated with the probes, and the PCR conditions.

- Open the QuantStudio Absolute Q Digital PCR Software and select the column(s) to be run and assign each partition array on the software to a specific sample (Figure 3).
- Select Preheat Two-Step and set up the reaction as below (Table 1):

**Note:** The PCR steps for this digital PCR-based method differ from a regular PCR reaction with both the annealing and extension steps merged into a single step. Moreover, the time for the annealing/extension step is very short due to the close proximity of the 2 primers (separated by only 24 base pairs) (Figure 1B).

△ **CRITICAL:** The annealing/extension temperature and time must be optimized for every set of primers and probes.

**Note:** The PCR condition has been optimized for DDOST probes on a QuantStudio Absolute Q Digital PCR platform (Thermo Fisher Scientific). Optimization of the PCR reaction is required if different dPCR platforms are used. For example, the PCR reaction for the DDOST probes needs to be modified to: 5 min at 95°C, 40 cycles of 94°C for 30 s, 53°C for 1 min and then 98°C for 10 min (ramp rate: 2°C s<sup>-1</sup>) when used in a droplet-based digital PCR equipment from Bio-Rad.

- Assign a fluorescence (e.g., FAM or HEX) channel to each probe (Figure 3).

△ **CRITICAL:** Make sure to select ROX (a reference dye) in the channels section. While there are no probes with a ROX fluorophore, ROX is a component of the Digital PCR Mastermix (5x) and is important for quality control to confirm the proper sample partitioning. Partitions with negative ROX signals are eliminated to reduce the incidence of false negatives. [Troubleshooting 2](#)

**Alternatives:** Other channels such as VIC and Cy5 can be selected instead of FAM and HEX depending on the fluorophores present on the probes of interest.

- Assign a name of the run and start the reaction.

**Table 1. Digital PCR steps**

Steps	Temperature	Time	Cycles
Preheat	96°C	10 min	1
Denaturation	95°C	5 s	45 cycles
Annealing/extension	56°C	10 s	

### Data analysis

- Once the PCR reaction is completed, open QuantStudio Absolute Q Digital PCR Software.
- Select the run to be analyzed.
- Assign the samples into groups if running different sets of samples that need to be analyzed independently.
- Adjust the thresholds on the x and y-axis to assign positive FAM and HEX signals as shown in [Figure 4](#).

**△ CRITICAL:** Select the group to analyze the samples together. The same thresholds on the x and y-axis need to be assigned when comparing samples from the same group.

- The data can be exported as an Excel spreadsheet or generated as a report ([Figure 5](#)).

**Note:** During a digital PCR, the target DNAs in the samples are randomly partitioned into the 20,480 microchambers ([Figure 2A](#)). As the result of this random distribution, microchambers will contain zero, one, or several copies of the target DNA depending on the overall concentration. The microchambers are assigned as positive or negative based on their fluorescence amplitude (partitions with two identical templates of DNAs cannot be differentiated from those with one template DNA). To account for the fraction of partitions with one or more copies (where both cases are assigned as positive microchambers), the concentration of samples is corrected using Poisson modeling ([Whale et al., 2013](#); [Dobnik et al., 2018](#); [Quan et al., 2018](#)). The formula used for Poisson modeling is:

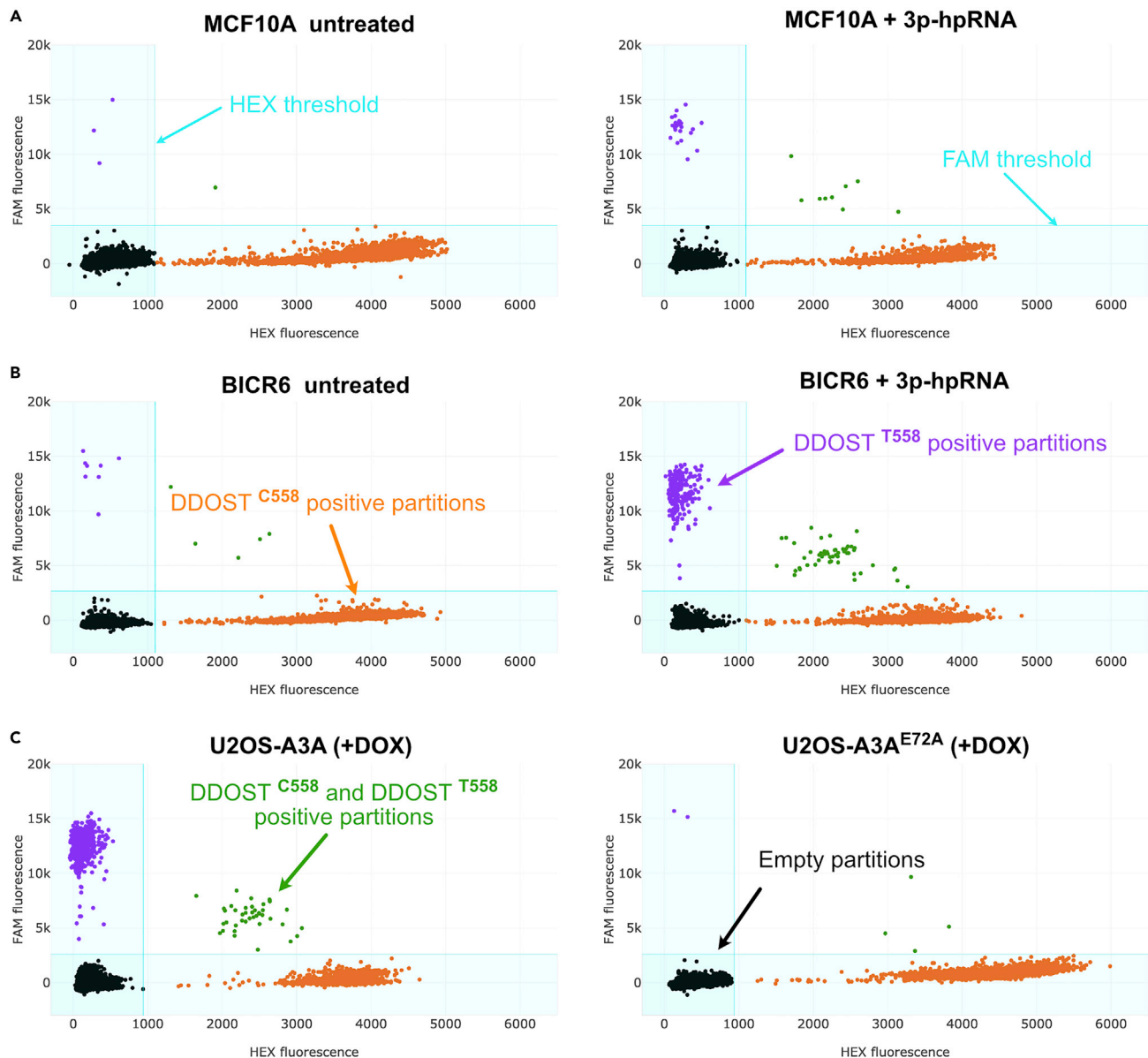
$$\text{Poisson corrected copy / } \mu\text{L or cp/}\mu\text{L} = \left( \frac{-\ln\left(1 - \frac{\text{number of positive partitions}}{\text{total partitions}}\right)}{\text{total partition volumes}} \right)$$

**△ CRITICAL:** When there are no negative microchambers and all the microchambers contain fluorescence signals, the Poisson correction cannot be applied. [Troubleshooting 1](#)

- Calculate the percentage of RNA editing events present in each sample ([Figure 6](#)). The formula used for calculating the fraction of editing events is:

$$\text{Percentage of RNA editing events} = \frac{\text{mutated cp/}\mu\text{L}}{\text{mutated cp/}\mu\text{L} + \text{WT cp/}\mu\text{L}} \times 100\%$$

**Note:** The dynamic range of the dPCR extends from around 0.25 copies/ $\mu\text{L}$  to several thousands of copies/ $\mu\text{L}$  without affecting the absolute quantification of the fraction of the target DNA in the samples as illustrated in [Figure 6C](#) for DDOST. The strong advantage of having an extended dynamic range is the direct comparison of samples with different levels of concentration of the target DNA.



**Figure 4. Quantification of the positive and negative micro-chambers**

(A–C) Example of scatter plots displaying HEX (WT) signals shown in orange and FAM (Mutant) signals shown in purple in MCF10A (A) and BICR6 (B) cell lines transfected with 3p-hpRNA for 48 h and 36 h respectively, or U2OS-A3A/A3A<sup>E72A</sup> DOX-inducible cell lines (C) treated with doxycycline (DOX) (200 ng/mL) for 48 h. Partitions with double-positive signals are shown in green and partitions without any amplification are shown in black. The thresholds to determine positive HEX and FAM signals are applied uniformly among samples from the same group.

△ **CRITICAL:** For a sample to be considered positive for RNA editing events, the measured signal must be higher than the Limit of Detection (LoD) and have more than 1000 partitions with positive fluorescence signal (see “[quantification and statistical analysis](#)” section).

**Alternatives:** Similar analysis and calculation can be performed when using other dPCR platforms such as the QX200 Droplet Digital PCR System from Bio-Rad (Jalili et al., 2020; Oh et al., 2021).

Total number of partitions analyzed in each sample

Number of positive partitions with edited or wild-type target

Group	Name	Well	Total	● FAM					● HEX						
				Target	Conc. cp/μL	SD	CV%	95%CI	Positives	Target	Conc. cp/μL	SD	CV%	95%CI	Positives
Group 1 (4)	Average		20385.50	DDOST Mutant	21.77	36.42	167.29	1.52	182	DDOST Wildtype	392.34	145.78	37.16	6.86	3045
	U2OS-A3A-dox	A1	20381		1.29			0.58	11		383.35			13.47	3011
	U2OS-A3A+dox	B1	20364		84.86			6.03	708		160.08			8.42	1315
	U2OS-A3A E72A-dox	C1	20365		0.24			0.18	2		543.67			16.36	4131
	U2OS-A3A E72A+dox	D1	20432		0.70			0.39	6		482.24			15.27	3722

Poisson corrected copies/μL of the edited or wild-type target

**Figure 5. Example of a table generated after the digital PCR reaction is completed**

The positive FAM and HEX signals in the microchambers are assigned based on their fluorescence amplitude.

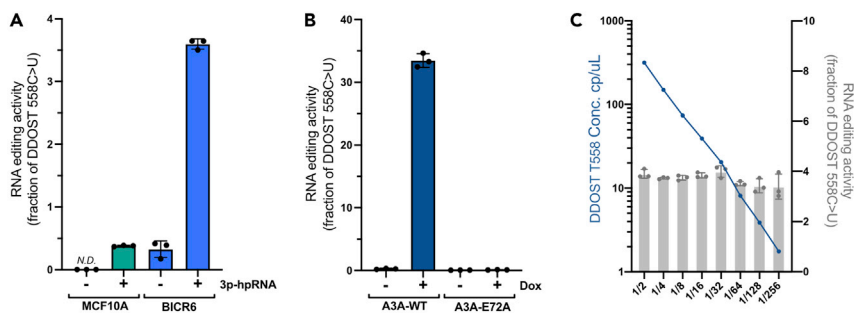
### Primer and probe optimization for digital PCR

This protocol can be readily adapted to monitor additional RNA editing events induced by A3A or by other RNA editing systems. To successfully detect RNA editing events, it is important to first test the primers and probes to verify their specificity to their respective target sequences as they differ in only one nucleotide. This is crucial when determining false-positive signals.

To test the specificity of the primers and probes, we advise synthesizing two oligonucleotides of 200 nucleotides containing the wild-type or mutated sequence of the region of interest. Then, use these two oligonucleotides as templates instead of adding cDNA as described in step 4.

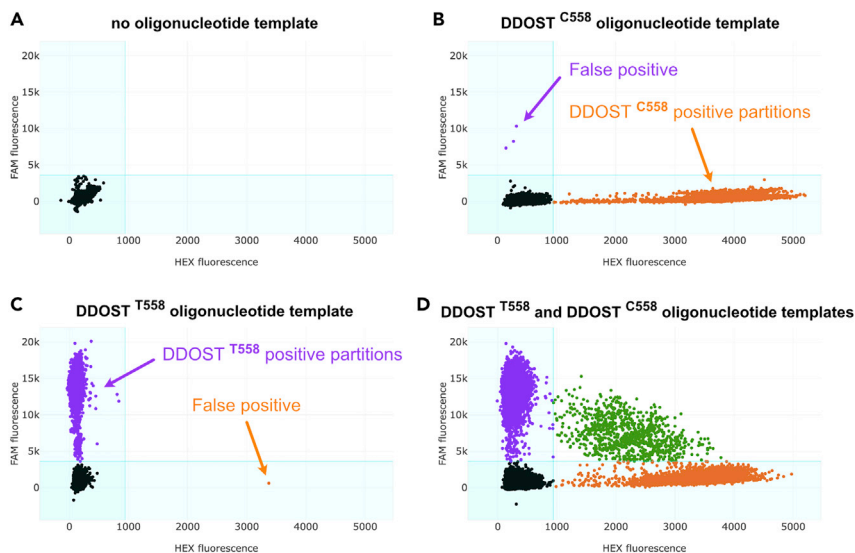
As shown in Figure 7, we recommend testing the probes in 4 different dPCR reactions with (A) no templates, (B) wild-type oligonucleotide template only (DDOST<sup>C558</sup>), (C) mutated oligonucleotide template only (DDOST<sup>T558</sup>), and (D) both wild-type and mutated oligonucleotide template. Specific probes should only amplify their respective target (Figures 7B and 7C) and equal fluorescence signal (50%) should be obtained when both oligonucleotides are equally mixed together (Figures 7D and 8). In these reactions, using 0.1–1 pg/mL of oligonucleotides is recommended.

Additionally, the annealing/extension temperature and time must be optimized for every set of primers/probes to limit non-specific amplification of the target. We suggest increasing or decreasing the annealing/extension temperature to improve the specificity of the primers and probes and limit false positive if such results are not obtained. Troubleshooting 3, 4, and 5.



**Figure 6. Quantification of RNA editing at DDOST<sup>558C>U</sup>**

(A) RNA editing events at DDOST<sup>558C>U</sup> were quantified in MCF10A or BICR6 cells after 3p-hpRNA transfection for 48 h and 36 h, respectively. Error bar: S.D. (n = 3). N.D.: not detected (signal below LoD).  
 (B) U2OS-derived cell lines inducibly expressing A3A or A3A-E72A were induced with doxycycline (DOX) for 48h or left uninduced. The level of edited DDOST<sup>558C>U</sup> in U2OS cells was quantified by dPCR assay. Error bar: S.D. (n = 3).  
 (C) Indicated serial dilution of cDNA obtained from BICR6 cell line transfected with 3p-hpRNA for 36 h. The Poisson corrected concentration of DDOST<sup>T558</sup> (left y-axis) and the fraction of RNA-editing event DDOST<sup>558C>U</sup> (right y-axis) were monitored. Error bar: S.D. (n = 3).



**Figure 7. Example of dPCR results used to determine the specificity of the DDOST primers and probes** (A–D) No templates (A), DDOST<sup>C558</sup> oligonucleotide template (B), DDOST<sup>T558</sup> oligonucleotide template (C), or both DDOST<sup>C558</sup> and DDOST<sup>T558</sup> oligonucleotide templates (D) were added to the dPCR mix containing the DDOST primers and probes as indicated in step 4. The dPCR reactions were then run as described in steps 5 to 18.

Other than testing for the specificity of the probes, this optimization step is also crucial for determining the Limit of Detection (LoD) or the threshold for significance to establish the level of false-positive signals generated by each probe, which allows to separate positive signals from background noises (see [quantification and statistical analysis](#) section for more details).

## EXPECTED OUTCOMES

Successful detection of RNA editing events should result in a clear separation of FAM fluorescence from the HEX fluorescence as well as from the partition without amplification. The percentage of RNA editing events detected using this dPCR method will fluctuate depending on the enzyme activity or the efficiency of the CRISPR programmable RNA base editor used. In the example of monitoring the endogenous expression of APOBEC3A in cancer cells, we expect to detect between 2% and 6% of DDOST<sup>558C>U</sup> events (Figure 6A). When APOBEC3A is expressed using a DOX-inducible system (Buisson et al., 2017), higher levels of RNA edited events are expected (>30% of DDOST<sup>558C>U</sup> events) (Figure 6B).

## QUANTIFICATION AND STATISTICAL ANALYSIS

To distinguish positive signals from background noise, it is important to establish a threshold for significance or limit of detection (LoD). The LoD for a given target is the highest number of partitions that can be detected in a sample with no target DNA. The LoD needs to be calculated for every set of probes and adjusted in the function of the number of partitions analyzed.

Oligonucleotides concentration	Replicate 1			Replicate 2			Replicate 3			Mean Ratio (%)	S.D.
	Conc.cp/uL DDOST T558	Conc.cp/uL DDOST C558	Ratio (%)	Conc.cp/uL DDOST T558	Conc.cp/uL DDOST C558	Ratio (%)	Conc.cp/uL DDOST T558	Conc.cp/uL DDOST C558	Ratio (%)		
1e-12 g/mL	620.6	606.2	50.6	755.99	745.23	50.4	758.7	720.21	51.3	50.7	0.49
1e-13 g/mL	125.24	119.06	51.3	68.99	72.99	48.6	57.64	58.96	49.4	49.8	1.37

**Figure 8. Quantification of the DDOST<sup>C558</sup> and DDOST<sup>T558</sup> oligonucleotides ratio by dPCR** DDOST<sup>C558</sup> and DDOST<sup>T558</sup> oligonucleotides were mixed together (1:1 ratio) at different concentrations and quantified by dPCR. The concentrations and the ratio highlighted in blue were obtained from the panel shown in Figure 6D. S.D.: Standard deviation.



**Table 2. Example of limit of detection calculation for DDOST probes**

Samples	LoD for DDOST <sup>T558</sup> (using DDOST C558 oligonucleotide template)	LoD for DDOST <sup>C558</sup> (using DDOST T558 oligonucleotide template)
Replicate 1	0.049%	0.020%
Replicate 2	0.000%	0.078%
Replicate 3	0.130%	0.058%
Mean	0.060%	0.052%

Three independent dPCR were run using the DDOST C558 oligonucleotide template only, or the DDOST T558 oligonucleotide template only. dPCR results for replicate 1 were shown as an example in Figures 6B and 6C and Table 2. For each dPCR, the LoD is calculated from the fraction of DDOST<sup>C558</sup> or DDOST<sup>T558</sup> cp/μL divided by the total Poisson corrected cp/μL (e.g., DDOST<sup>T558</sup> LoD obtained from the replicate 1 shown in Figure 6B: Poisson corrected 0.35 cp/μL (from 3 DDOST<sup>C558</sup> positive partitions) divided by total Poisson corrected 712.02 cp/μL (from 5232 total positive partitions) = 0.049%.

Run three or more dPCR reactions on a control sample (e.g., a synthetic oligonucleotide containing the wild type sequence only or mutant sequence only as described in Figures 7B and 7C) and calculate the LoD using the following formula:

$$\text{LoD for DDOST}^{C558}(\%) = \frac{\text{DDOST C558 Poisson corrected cp}/\mu\text{L}}{\text{Total Poisson correct cp}/\mu\text{L}} \times 100\%$$

$$\text{LoD for DDOST}^{T558}(\%) = \frac{\text{DDOST T558 Poisson corrected cp}/\mu\text{L}}{\text{Total Poisson correct cp}/\mu\text{L}} \times 100\%$$

Any concentration with positive signals less than or equal to this calculated mean should be considered as negative or false positive. For example, the LoD for DDOST<sup>T558</sup> is 0.060% (Table 2). It means that APOBEC3A-induced RNA editing activity below 0.060% for the fraction of DDOST<sup>558 C>U</sup> (or below 0.060% of DDOST<sup>T558</sup>) will be considered as negative for RNA editing events.

In addition to calculating the LoD of each probe and determining the level of false positives, it is also essential to obtain enough partitions with positive fluorescence signals to accurately calculate the fraction of RNA editing events in a sample. Because we observed a loss of linearity when a sample had a low level of positive partitions, we recommend having at least 1000 positive partitions in each sample and excluding samples that do not reach this abundance.

## LIMITATIONS

The specific location of the RNA editing events can be a limitation for the design of the PCR primers and probes because the sequence around the RNA editing events may not be optimal for the PCR reaction (e.g., high GC content or sequences forming secondary structures) and will directly affect the efficiency of the amplification of the target sequence or the specificity of the set of probes for the point mutation. Troubleshooting 4 and 5

## TROUBLESHOOTING

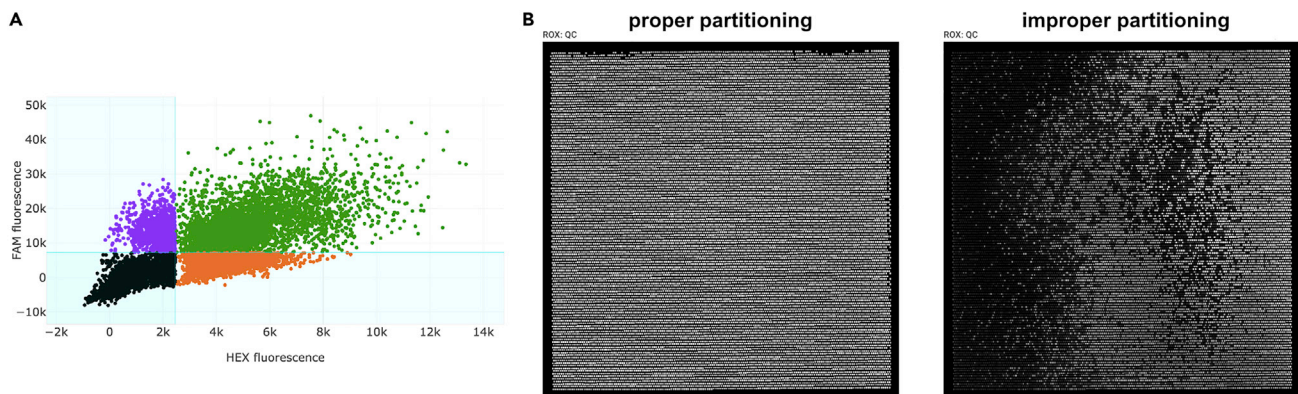
### Problem 1

Absence of partition without any fluorescence signal on the scatter plots.

### Potential solution

The sample was not sufficiently diluted in step 3 and all the microchambers contain one or several DNA targets. The Poisson correction cannot be applied if all the partitions contain a fluorescence signal. Increase the dilution factor of the cDNA before starting the dPCR reaction.





**Figure 9. Examples of bad partitioning during the loading of the samples**

(A) Example of a sample without a clear separation of the FAM and HEX fluorescence signal in the scatter plot graph.

(B) Examples of a proper (left) or improper (right) sample partitioning across a partition array. The quality of the partitioning is determined by monitoring the even distribution of the ROX fluorescence.

### Problem 2

A cluster of signals across the scatter plot (e.g., Figure 9A) without clear separation of FAM and HEX fluorescence signals in step 16.

#### Potential solution

A cluster of negative signals without any separation of FAM and HEX signals may appear when the partitioning in the 20,480 microchambers of the partition array is not performed properly. Check the ROX-QC array on the analysis software to determine whether the sample was improperly loaded in the partition array (Figure 9B). Improper filling of the microchambers may be caused by any micro debris in the sample. This may be solved by centrifuging the samples at 10,000g for 1–2 min to pellet any micro debris that may be present in the samples before their loading.

### Problem 3

Positive partition on the scatter plots in the no template control sample in step 16.

#### Potential solution

Digital PCR is a very sensitive method and can detect very low levels of target DNA. Positive fluorescence signal in the no template control sample is often caused by cross-contamination between samples or the reagents used for the dPCR reaction. It is advised to use fresh buffers and dedicated pipettes and filter tips, and prepare the samples under a PCR workstation or PCR hood to prevent any undesired contamination.

### Problem 4

The HEX or FAM Fluorescence is not detected in step 16.

#### Potential solution

The amplification primers are not working properly. Optimize the sequence of the primers to increase the amplification efficiency. We recommend testing first the different sets of primers on cDNA to identify the ones that amplify the region of interest most efficiently.

RNA or cDNA samples were too diluted (see steps 2 and 3). Increase the amount of RNA used in the reverse transcription reaction or dilute less the cDNA before starting the dPCR reaction.

### Problem 5

The HEX or FAM Fluorescence signals are curved on the scatter plots in step 16.

### Potential solution

HEX or FAM Fluorescence signals are curved when the two probes (that recognize the WT sequence or the mutated sequence) are not specific enough and start hybridizing to the wrong sequence. Increasing the annealing/extension temperature will limit the unspecific hybridization of the probes. Alternatively, modify the sequence of the probes to increase sequence specificity (e.g., sequence with a lower Melting temperature, longer probe, or higher GC content).

### RESOURCE AVAILABILITY

#### Lead contact

Further information and requests for resources and reagents should be directed to and will be fulfilled by the lead contact, Rémi Buisson ([rbuisson@uci.edu](mailto:rbuisson@uci.edu)).

#### Materials availability

This study did not generate new unique reagents.

#### Data and code availability

This study did not generate/analyze datasets

### ACKNOWLEDGMENTS

We thank Andrew Babbin, Elodie Bournique, and Pedro Ortega for their helpful discussions. We thank Christina Bouwens and Adam Langston (Thermo Fisher Scientific) for technical advice. R.B. is supported by an NIH MERIT Award (R37-CA252081), an NIH Pathway to Independence Award (R00-CA212154), the California Breast Cancer Research Program, the Concern Foundation, and a University of California Cancer Research Coordinating Committee (CRCC) award grant. This work was also made possible, in part, through access to the Genomics High Throughput Facility Shared Resource of the Chao Family Comprehensive Cancer Center Support Grant (P30-CA062203). Cartoons in the Graphical abstract were created with [BioRender.com](https://www.biorender.com). Image captions included in the Graphical Abstract (bottom right), [Figure 2A](#) (right), and [Figure 2B](#) were used by permission of Thermo Fisher Scientific, the copyright owner.

### AUTHOR CONTRIBUTIONS

S.O. performed all the experiments. S.O. and R.B. developed the method and wrote the manuscript.

### DECLARATION OF INTERESTS

The authors declare no competing interests.

### REFERENCES

- Buisson, R., Lawrence, M.S., Benes, C.H., and Zou, L. (2017). APOBEC3A and APOBEC3B activities render cancer cells susceptible to ATR inhibition. *Cancer Res.* 77, 4567–4578. <https://doi.org/10.1158/0008-5472.CAN-16-3389>.
- Buisson, R., Langenbucher, A., Bowen, D., Kwan, E.E., Benes, C.H., Zou, L., and Lawrence, M.S. (2019). Passenger hotspot mutations in cancer driven by APOBEC3A and mesoscale genomic features. *Science* 364, eaaw2872. <https://doi.org/10.1126/science.aaw2872>.
- Cox, D.B., Gootenberg, J.S., Abudayyeh, O.O., Franklin, B., Kellner, M.J., Joung, J., and Zhang, F. (2017). RNA editing with CRISPR-Cas13. *Science* 358, 1019–1027. <https://doi.org/10.1126/SCIENCE.AAQ0180>.
- Dobnik, D., Spilsberg, B., Štebih, D., Morisset, D., Holst-Jensen, A., and Žel, J. (2018). Multiplex droplet digital PCR protocols for quantification of GM maize events. In *Methods in Molecular Biology, George Karlin-Neumann and Francisco Bizouarn, eds.* (Springer), pp. 69–98.
- Isozaki, H., Abbasi, A., Nikpour, N., Langenbucher, A., Su, W., Stanzione, M., Frisco-Cabanos, H., Siddiqui, F.M., Phan, N., Jalili, P., and Oh, S. (2021). APOBEC3A Drives Acquired Resistance to Targeted Therapies in Non-small Cell Lung Cancer. *bioRxiv*. <https://doi.org/10.1101/2021.01.20.426852>.
- Jalili, P., Bowen, D., Langenbucher, A., Park, S., Aguirre, K., Corcoran, R.B., Fleischman, A.G., Lawrence, M.S., Zou, L., and Buisson, R. (2020). Quantification of ongoing APOBEC3A activity in tumor cells by monitoring RNA editing at hotspots. *Nat. Commun.* 11, 2971. <https://doi.org/10.1038/s41467-020-16802-8>.
- Oh, S., Bournique, E., Bowen, D., Jalili, P., Sanchez, A., Ward, I., Dananberg, A., Manjunath, L., Tran, G.P., Semler, B.L., and Maciejowski, J. (2021). Genotoxic stress and viral infection induce transient expression of APOBEC3A and pro-inflammatory genes through two distinct pathways. *Nat. Commun.* 12, 1–17. <https://doi.org/10.1038/S41467-021-25203-4>.
- Quan, P.-L., Sauzade, M., and Brouzes, E. (2018). dPCR: a technology review. *Sensors* 18, 1271. <https://doi.org/10.3390/S18041271>.
- Rees, H.A., and Liu, D.R. (2018). Base editing: precision chemistry on the genome and transcriptome of living cells. *Nat. Rev. Genet.* 19, 770. <https://doi.org/10.1038/S41576-018-0059-1>.

Sharma, S., Patnaik, S.K., Taggart, R.T., Kannisto, E.D., Enriquez, S.M., Gollnick, P., and Baysal, B.E. (2015). APOBEC3A cytidine deaminase induces RNA editing in monocytes and macrophages. *Nat. Commun.* *6*, 6881. <https://doi.org/10.1038/ncomms7881>.

Stenglein, M.D., Burns, M.B., Li, M., Lengyel, J., Harris, R.S., Stenglein, M.D., Burns, M.B., Li, M., Lengyel, J., and Harris, R.S. (2010). APOBEC3 proteins mediate the clearance of foreign DNA from human cells. *Nat. Struct. Mol. Biol.* *17*, 222–229. <https://doi.org/10.1038/nsmb.1744>.

Whale, A.S., Cowen, S., Foy, C.A., and Huggett, J.F. (2013). Methods for applying accurate digital PCR analysis on low copy DNA samples. *PLoS ONE* *8*, e58177. <https://doi.org/10.1371/journal.pone.0058177>.