

# UC San Diego

## UC San Diego Previously Published Works

### Title

Discovery and Functional Characterization of Two Regulatory Variants Underlying Lupus Susceptibility at 2p13.1

### Permalink

<https://escholarship.org/uc/item/8bh008p1>

### Journal

Genes, 13(6)

### ISSN

2073-4425

### Authors

Fazel-Najafabadi, Mehdi  
Rallabandi, Harikrishna-Reddy  
Singh, Manish K  
[et al.](#)

### Publication Date

2022

### DOI

10.3390/genes13061016

Peer reviewed

## Article

# Discovery and Functional Characterization of Two Regulatory Variants Underlying Lupus Susceptibility at 2p13.1

Mehdi Fazel-Najafabadi <sup>1,†</sup> , Harikrishna-Reddy Rallabandi <sup>1,†</sup>, Manish K. Singh <sup>1,†</sup>, Guru P. Maiti <sup>1</sup> ,  
Jacqueline Morris <sup>2</sup>, Loren L. Looger <sup>2,3,\*</sup>  and Swapan K. Nath <sup>1,\*</sup> 

<sup>1</sup> Arthritis and Clinical Immunology Research Program, Oklahoma Medical Research Foundation, Oklahoma City, OK 73104, USA; mehdi-fazel@omrf.org (M.F.-N.); harikrishnareddy-rallabandi@omrf.org (H.-R.R.); manishkumar-singh@omrf.org (M.K.S.); guru-maiti@omrf.org (G.P.M.)

<sup>2</sup> Department of Neurosciences, University of California, San Diego, CA 92121, USA; jfmorris@health.ucsd.edu

<sup>3</sup> Howard Hughes Medical Institute, University of California, San Diego, CA 92121, USA

\* Correspondence: loogerl@hhmi.org (L.L.L.); swapan-nath@omrf.org (S.K.N.)

† These authors are the first author.

‡ These authors contributed equally to this work.

**Abstract:** Genome-wide association studies have identified 2p13.1 as a prominent susceptibility locus for systemic lupus erythematosus (SLE)—a complex, multisystem autoimmune disease. However, the identity of underlying causal variant (s) and molecular mechanisms for increasing disease susceptibility are poorly understood. Using meta-analysis (cases = 10,252, controls = 21,604) followed by conditional analysis, bioinformatic annotation, and eQTL and 3D-chromatin interaction analyses, we computationally prioritized potential functional variants and subsequently experimentally validated their effects. Ethnicity-specific meta-analysis revealed striking allele frequency differences between Asian and European ancestries, but with similar odds ratios. We identified 20 genome-wide significant ( $p < 5 \times 10^{-8}$ ) variants, and conditional analysis pinpointed two potential functional variants, rs6705628 and rs2272165, likely to explain the association. The two SNPs are near *DGUOK*, mitochondrial deoxyguanosine kinase, and its associated antisense RNA *DGUOK-AS1*. Using luciferase reporter gene assays, we found significant cell type- and allele-specific promoter activity at rs6705628 and enhancer activity at rs2272165. This is supported by ChIP-qPCR showing allele-specific binding with three histone marks (H3K27ac, H3K4me3, and H3K4me1), RNA polymerase II (Pol II), transcriptional coactivator p300, CCCTC-binding factor (CTCF), and transcription factor ARID3A. Transcriptome data across 28 immune cell types from Asians showed both SNPs are cell-type-specific but only in B-cells. Splicing QTLs showed strong regulation of *DGUOK-AS1*. Genotype-specific *DGUOK* protein levels are supported by Western blots. Promoter capture Hi-C data revealed long-range chromatin interactions between rs2272165 and several nearby promoters, including *DGUOK*. Taken together, we provide mechanistic insights into how two noncoding variants underlie SLE risk at the 2p13.1 locus.

**Keywords:** lupus; Post-GWAS; *DGUOK*; Luciferase; enhancer



**Citation:** Fazel-Najafabadi, M.; Rallabandi, H.-R.; Singh, M.K.; Maiti, G.P.; Morris, J.; Looger, L.L.; Nath, S.K. Discovery and Functional Characterization of Two Regulatory Variants Underlying Lupus Susceptibility at 2p13.1. *Genes* **2022**, *13*, 1016. <https://doi.org/10.3390/genes13061016>

Academic Editors: F. Yesim Demirci and Timothy B. Niewold

Received: 16 April 2022

Accepted: 2 June 2022

Published: 5 June 2022

**Publisher's Note:** MDPI stays neutral with regard to jurisdictional claims in published maps and institutional affiliations.



**Copyright:** © 2022 by the authors. Licensee MDPI, Basel, Switzerland. This article is an open access article distributed under the terms and conditions of the Creative Commons Attribution (CC BY) license (<https://creativecommons.org/licenses/by/4.0/>).

## 1. Introduction

Systemic lupus erythematosus (SLE or lupus) is an autoimmune disease characterized by abnormal B- and T-cell responses, production of numerous pathogenic autoantibodies, and immune complex deposition, among other phenomena—leading to myriad clinical manifestations [1,2]. These range from relatively mild manifestations (e.g., skin rash or non-erosive arthritis) to seriously disabling or even life-threatening complications, such as lupus nephritis, neuropsychiatric disorders, and other major organ involvement [3–5]. In the US alone, over 200,000 individuals are currently afflicted with active SLE [6], mostly women (~90%), with prevalence 3–5 times higher in individuals of African, Asian, and Hispanic

ancestries compared to Caucasian ancestry. In addition, non-Caucasian patients tend to manifest clinical disease earlier and show accelerated and more severe organ damage [7–9].

While SLE etiopathogenesis is not fully understood, there is a substantial genetic contribution, as exemplified by frequent familial aggregation [7], high heritability [10], striking monozygotic twin-concordance (a 10-fold increase over dizygotic twins) [11], and large sibling recurrence risk ( $\lambda_s \sim 29$ ) [7]. To date, several large-scale genome-wide association studies (GWAS) and meta-analyses from our lab and others have identified over 100 genome-wide significant ( $p < 5 \times 10^{-8}$ ) lupus-associated risk loci, mostly linked to single nucleotide polymorphisms (SNPs) located in non-coding regions [12,13]. However, given that credible intervals responsible for GWAS loci typically consist of hundreds of variants with similar statistical support, discerning ‘true’ causal SNP(s) underlying association is difficult [14]—but necessary for a mechanistic understanding of disease development, progression, and involved pathways.

The SLE susceptibility locus at 2p13.1 was first identified in a meta-analysis of Asian (Chinese and Thai) populations [15]. However, despite strong genetic association with SLE, the identities of causal variant(s) and their underlying molecular mechanisms at this locus are unknown. In this study, using extensive bioinformatic analysis followed by diverse in vitro experimental assays across SLE-relevant cell lines, we thoroughly characterized relevant SNPs and molecular involvement at this locus. Our study provides mechanistic insight into how two non-coding variants interact to modulate the expression of their cognate target genes (*DGUOK* and the nearby antisense non-coding RNA *DGUOK-AS1*). We find that these two SNPs fully explain SLE susceptibility at the 2p13.1 locus.

## 2. Materials and Methods

### 2.1. Meta-Analysis and Conditional Analysis

For this study, we used summary data available from six cohorts, four from Asian [16,17] and two from European [16–18] ancestries. For each cohort, sample sizes used for SLE cases and controls are shown in Table 1. This study was approved by the Institutional Review Board of the Oklahoma Medical Research Foundation (OMRF) IRB# 10-23).

**Table 1.** Meta-analysis of rs6705628 and rs2272165 at 2p13.1 using Asian and European cohorts.

Ethnicity	Cohort	PMID	# Cases	# Controls	rs6705628 (T/C)				rs2272165 (A/G)			
					FU(A1)	FA(A1)	OR (95% CI)	p-Value	FU(A1)	FA(A1)	OR (95% CI)	p-Value
ASN	Meta-analysis		4144	11,014	0.19	0.16	0.79 (0.72–0.87)	$5.56 \times 10^{-10}$	0.19	0.16	0.79 (0.71–0.86)	$3.48 \times 10^{-10}$
	HC: Morris et al., 2016	27399966	1659	3398	0.18	0.15	0.72 (0.63–0.81)	$3.23 \times 10^{-8}$	0.18	0.15	0.71 (0.63–0.80)	$1.86 \times 10^{-8}$
	Korean: Sun et al., 2016	26808113	1710	6836	0.20	0.17	0.86 (0.77–0.961)	$6.42 \times 10^{-3}$	0.20	0.17	0.86 (0.77–0.96)	$7.63 \times 10^{-3}$
	HC: Sun et al., 2016	26808113	490	493	0.22	0.20	0.85 (0.67–1.07)	$1.49 \times 10^{-1}$	0.22	0.20	0.84 (0.67–1.06)	$1.40 \times 10^{-1}$
	Malaysian: Sun et al., 2016	26808113	285	287	0.17	0.11	0.66 (0.46–0.93)	$1.36 \times 10^{-2}$	0.17	0.11	0.67 (0.47–0.94)	$1.72 \times 10^{-2}$
EUR	Meta-analysis		6108	10,590	0.01	—	0.78 (0.55–1.0)	$1.88 \times 10^{-2}$	0.01	—	0.78 (0.55–1.0)	$1.90 \times 10^{-2}$
	EUR: Bentham et al., 2015	26502338	5201	9066	0.01	—	0.84 (0.65–1.08)	$1.68 \times 10^{-1}$	0.01	—	0.84 (0.65–1.08)	$1.69 \times 10^{-1}$
	SPN: Julia et al., 2018	29848360	907	1524	0.01	—	0.57 (0.31–1.04)	$7.21 \times 10^{-2}$	0.01	—	0.57 (0.31–1.04)	$7.19 \times 10^{-2}$

Abbreviations: FU: Minor allele frequency in unaffected individuals. FA: Minor allele frequency in affected individuals. OR: Odds Ratio. ASN: Asian ancestry. EUR: European ancestry.

To identify associated SNPs from the SLE susceptibility locus at 2p13.1, we extracted all relevant information (SNP, position, allele frequencies, effect sizes). We began with our published Asian cohorts [16,17] and augmented with data from another study [18]. SNP quality control for our initial Asian cohort has been described elsewhere [16,17]. All SNPs in the study were in Hardy-Weinberg equilibrium ( $p > 1 \times 10^{-6}$ ) and had minor allele frequency  $>1\%$ . Association analysis for both studies was performed using PLINK v1.9 [19]. Ethnicity-specific meta-analysis for four Asian and two European cohorts was performed by METAL [20], using the weighted inverse variance method—based on regression coefficients



### 2.3. Non-Coding RNA Interaction Analysis

We used the DIANA-LncBase (v3) database [27] to collate experimentally validated miRNA targets of lncRNAs. At the time of our search, DIANA-LncBase v3 included ~250,000 miRNA-lncRNA pairs, collected from 243 distinct human and mouse tissues and cell types. The entries were derived from manual curation of publications and >300,000 publicly available datasets, across 14 different experimental methodologies. We used default settings for our searches.

For prediction of non-miRNA interactions of lncRNAs, we used lncRRISearch [28] (lncRRISearch). lncRRISearch uses RIBlast to predict RNA–RNA interactions. We used default settings for our searches.

### 2.4. Expression Level Analysis of *DGUOK* and *DGUOK-AS1* in Four B-lymphocyte Lines

The single-cell expression matrix files containing UMI counts for expressed genes in matrix market exchange format output by the 10× Cell Ranger pipeline were downloaded from GEO for samples GSM3596321 (Coriell cell line GM12878) and GSM3596320 (Coriell cell line GM18502) [29]. This process was repeated for GEO samples GSM4796271 and GSM4796272, for which sequencing samples and subsequent UMI counts were generated in the same manner as the previous reference but from patient-derived EBV-transformed lymphoblastoid B-cell lines using B95-8 or M81 strains of EBV, respectively [30]. UMI counts for *DGUOK* and *DGUOK-AS1* were retrieved from the matrix files and the number of cells counted for each unique combination of *DGUOK/DGUOK-AS1* expression levels. Cell counts were log-transformed and displayed as a heatmap (see calibration bar below figure panels) for each combination to visualize co-regulation of expression as a function of expression value. The value “–1” represents pairs of expression values for which no cells were found; this was chosen to aid in visualization.

### 2.5. Luciferase Reporter Assay

The Dual-Luciferase Reporter Assay System (Biotium) was used to assess potential allele-specific enhancer/promoter activity of the sequences containing rs67056278 and rs2272165. Briefly, ~400 bp regions surrounding rs67056278 and rs2272165 were cloned into the pGL4.14 vector (for promoter assays) and the pGL4.26 vector (for enhancer assays) (both from Promega). HEK293 (human embryonic kidney cells), U937 (monocyte), and LCL (B-lymphoblastoid) cell lines were cultured and grown up to ~70% confluence, and each plasmid was transiently co-transfected with pGL4.74 (internal control). Enhancer/promoter activity of each construct was measured after 24 h, using the Dual-Luciferase Reporter Assay.

### 2.6. Allele-Specific ChIP–qPCR

Chromatin immunoprecipitation (ChIP) assays were performed using a Magnify ChIP assay kit (Cat No. 492024, Thermo-Fisher, Waltham, MA, USA) according to manufacturer guidelines to test allele-specific binding of the homozygous risk and non-risk genotypes of the rs67056278 and rs2272165 regions to histone marks (H3K27ac, H3K4me1, and H3K4me3), RNA Pol II, P300, CTCF, and ARID3A. Briefly, 1.5–2 × 10<sup>6</sup> homozygous rs67056278/rs2272165 (both) risk and non-risk haplotype-containing Epstein–Barr virus-transduced B-lymphoblastoid cell lines (from the Coriell collection) were first crosslinked with 1% paraformaldehyde. Cells were thoroughly washed with cold PBS, pelleted, and sonicated (Covaris S1 sonicator, No. E220) in 130 µL of lysis buffer containing protein inhibitor cocktail. Antibodies against the individual histone (H3K27ac, H3K4me1, and H3K4me3) and other DNA-binding proteins (RNA Pol II, P300, and CTCF), as well as a control mouse IgG, were pre-incubated with Dynamag magnetic A+G beads for 2 h at 4 °C. Sheared chromatin–protein complexes were then incubated overnight at 4 °C with mild agitation for immunoprecipitation. DNA was reverse cross-linked by incubating with proteinase K at 55 °C for 25 min and eluted from the immunoprecipitated chromatin complexes. Eluted samples were subjected to real-time qPCR analysis with SYBR Green and primers flanking the rs67056278 and rs2272165 SNP regions, using an Applied Biosystems

7900HT qPCR machine. Experiments were performed in triplicate, and statistical significance was assessed by Student's *t*-test using GraphPad PRISM software. *p*-value < 0.05 was considered as significant.

### 2.7. Western Blotting

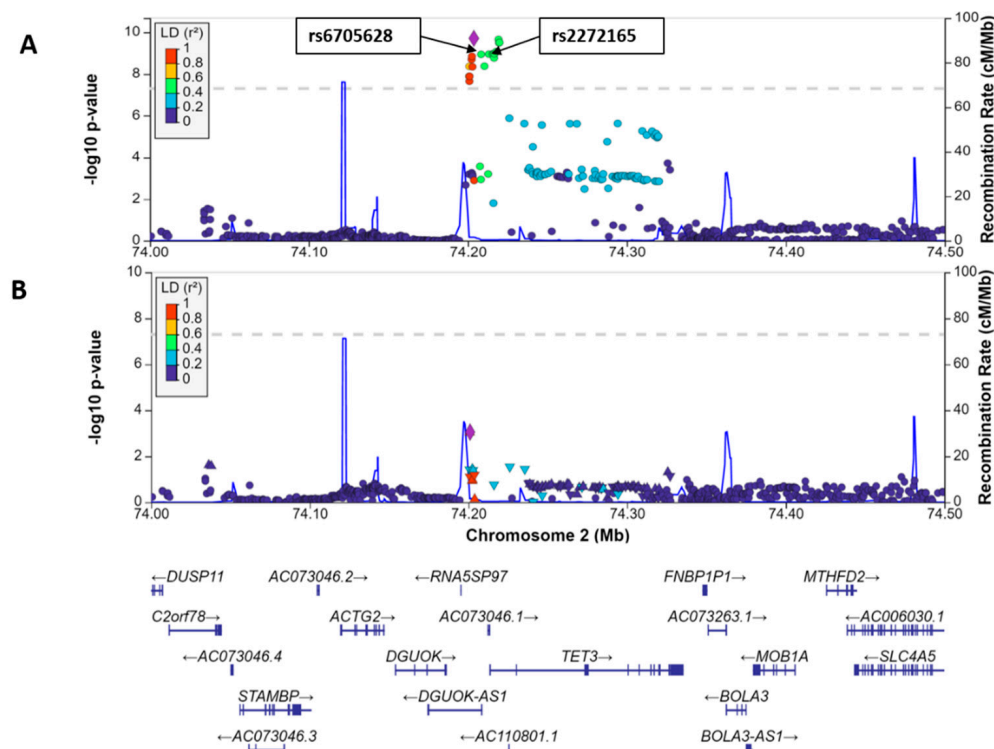
Three lymphoblastoid cell lines (LCLs; 2 homozygous risk/risk and 1 homozygous non-risk/non-risk) from Coriell were used for Western blots. Two non-risk (GM18553, GM18561) and two risk (GM18572, GM18592) lines were lysed in NP40 buffer (50 mM Tris, pH 8.0, 150 mM NaCl, 1% NP40, 1% SDS, 1 mM protease inhibitor cocktail) on ice for 15 min. The prepared lysates were centrifuged at 20,000× *g* at 4 °C for 10 min. Supernatants were collected and used for protein quantification. Further, 100 µg supernatant from each sample (non-risk and risk) was separated on an SDS-PAGE gel and transferred onto a PVDF membrane. The membranes were blocked with 5% BSA in Tris-buffered saline with Tween-20 (TBST) for 1 h at room temperature. Upon completion of incubation, blotting membranes were washed three times with buffer. Next, the blots were incubated with anti-DGUOK (Santa Cruz Biotechnology, SC-376267) and anti-GAPDH (SC-47724) primary antibodies overnight at 4 °C, on a shaker. The next day, blotting membranes were incubated with anti-mouse IgG secondary antibody for 1 h at room temperature on a shaker. Finally, the bands were detected by an ECL-plus Western blotting detection system (Cat No. 32209, Thermo-Fisher, Waltham, MA, USA) following manufacturer guidelines.

## 3. Results

### 3.1. Meta-Analysis of Genome-Wide Association Studies

We first performed two ethnicity-specific meta-analyses across published Asian and European GWAS studies covering the 2p13.1 region (Table 1). The Asian cohorts included individuals from Han Chinese, Malaysian Chinese, and Korean populations, and the European cohorts included individuals from Spanish and European ancestries. The total number of individuals in our meta-analysis was 31,856 (10,252 cases; 21,604 controls). The association signal mapped almost exclusively to the *TET3* region, with particular accumulation at the intergenic region between *TET3* (5' to it) and *DGUOK* (3' to it—also the overlapping lncRNA *DGUOK-AS1*) (Figure 2a). Among the 1741 qualified (MAF > 1% in East Asians) SNPs within ~1 megabase (hg19-Chr2: 73,708,783-74,705,126) region, 20 SNPs (18 substitutions and 2 indels) from Asian-specific meta-analysis passed genome-wide significance ( $p < 5 \times 10^{-8}$ ) (Table S1). Signal localized to several SNPs near the association peak (Figure 2a). Of these, only rs2272165 was highly conserved (Methods), and we began conditional analysis with this SNP. Conditional analysis localized signal to rs2272165 and rs6705628, with further conditioning on these SNPs essentially removing association signal (Figure 2b). Thus, the association is well explained by these two SNPs.

For these two SNPs, each risk allele occurred at around 20% frequency in the Asian populations, and around 1% in the Europeans, reflecting a profound difference in underlying allelic prevalence. The meta-analysis yielded similar statistics for both SNPs (unsurprising given their close distance—4883 bases—and strong LD between them— $r^2 = 0.99$ —in Asians.) We analyzed our data on Asian and European ancestries both separately and jointly. The *p*-value and odds ratio (OR) with 95% confidence interval were  $p = 5.56 \times 10^{-10}$  and 0.79 (0.72–0.87) for rs6705628; and  $p = 3.48 \times 10^{-10}$  and 0.79 (0.71–0.86) for rs2272165. Despite the much lower incidence, computed odds ratios were identical (0.91) in European populations. The rs6705628 SNP just achieved statistical significance ( $p = 4.99 \times 10^{-2}$ ), whereas the rs2272165 SNP just missed it. Taken together, this meta-analysis indicates that these two SNPs (whose effects are difficult to separate due to nearly compete LD) strongly contribute to SLE susceptibility, especially pronounced in Asians. Thus, we moved forward with experiments to determine mechanistic aspects of risk arising at these two SNPs in the 2p13.1 region.



**Figure 2.** Ethnicity-specific meta-analysis, conditional analysis, and bioinformatics. (A) Plot shows  $-\log_{10} p$ -value from the Asian cohorts on the left  $y$ -axis and physical position on the  $x$ -axis. The SNPs selected for conditional analysis are shown in boxes. Dots identify individual SNP  $p$ -values, colored by their LD strength ( $r^2$ ) with the lead SNP. Blue line indicates pre-calculated recombination rates (in cM/Mb, right  $y$ -axis) at each position. (B) SNP association after conditional analysis with the two selected SNPs.

### 3.2. Bioinformatics of the Region

We evaluated the potential pathogenicity of the SNPs by running PredictSNP2 [23] on this genomic region. Several SNPs including rs2272165 were identified as potentially deleterious (Table S2).

Both SNPs (rs2272165 and rs6705628) are in chromatin that is annotated as quite active (ENCODE data in UCSC Genome Browser). rs6705628 is annotated as an active promoter in GM12878 (B-lymphocyte) cells, and as a strong enhancer in K562 cells (erythroleukemia cells resembling granulocytes). ENCODE project data show very strong histone marking (particularly H3K4me3 and H3K27ac) in both cell lines, and the region is annotated as open chromatin in both, as well. ENCODE ChIP-seq data show a remarkable number of bound transcription factors and chromatin regulators at this locus: JUN, MYC, MAX, KDM5B, SIX5, ZBTB33, ELF1, PHF8, E2F1, TAF1, HMGN3, CHD2, TBP, TFAP2C, CTCF, CREB1, EBTF, ZBTB7A, SP4, IRF1, E2F4, MAX, TEAD4, TBL1XR1, ARID3A, and NR2F2. This base is 100% conserved as the risk C in primates.

rs2272165 is annotated as a strong enhancer in both GM12878 and K562 cells. Histone marking (particularly H3K4me3) is strong in K562 cells, and both cells show this region as open chromatin. ChIP-seq shows binding of MAX, SMARCB1, BHLHE40, MYC, KDM5B, MXI1, E2F6, TBP, NFIC, STAT3, UCTF, and SP1 to the region. Consensus recognition motifs for MZF1 and RREB1 occur directly adjacent to this base. This base is 100% conserved as the risk G in primates.

Based on 3D-chromatin interaction analysis with the PCHiC data, we found that the rs2272165 region strongly interacts with the promoters of neighboring genes (including both *DGUOK* and *DGUOK-AS1*) in both GM12878 cells and monocytes, as well as all other immune cells together (Figure 1). This suggests a potential regulatory role.

### 3.3. Non-Coding RNA Interactions

The *DGUOK-AS1* antisense RNA presents fascinating connections with the immune system. In addition to targeting its namesake *DGUOK* itself, *DGUOK-AS1* regulates many microRNAs with immune involvement. *DGUOK-AS1* regulates the microRNA miR-204-5p, whose principal downstream target is interleukin-11; in this context, the RNA was found to promote IL-11 secretion, breast cancer cell migration, angiogenesis, and macrophage migration [31,32]. It appears that *DGUOK-AS1* may bind to multiple miRNA species and affect their function. Other experimentally validated miRNA targets of *DGUOK-AS1* (Table S3) included miR-1-3p, miR-138-5p, miR-148a-3p and miR-148b-3p, miR-151a-3p, miR-653-5p, and miR-876-3p. Remarkably, all interacting miRNAs are primarily annotated as immune modulators.

We next performed a search for non-miRNA targets of *DGUOK-AS1* (Table S4). The top hits included the inflammatory peptide bradykinin, which is upregulated in SLE, rheumatoid arthritis, and Hashimoto's thyroiditis [33]; pattern recognition receptor 36, which is involved in the innate immune system [34]; and the lncRNA *Xist*, the principal mediator of X chromosome inactivation in females [35]—*Xist* has been shown to strongly contribute to B-cell modulation and sex bias in SLE and arthritis [36].

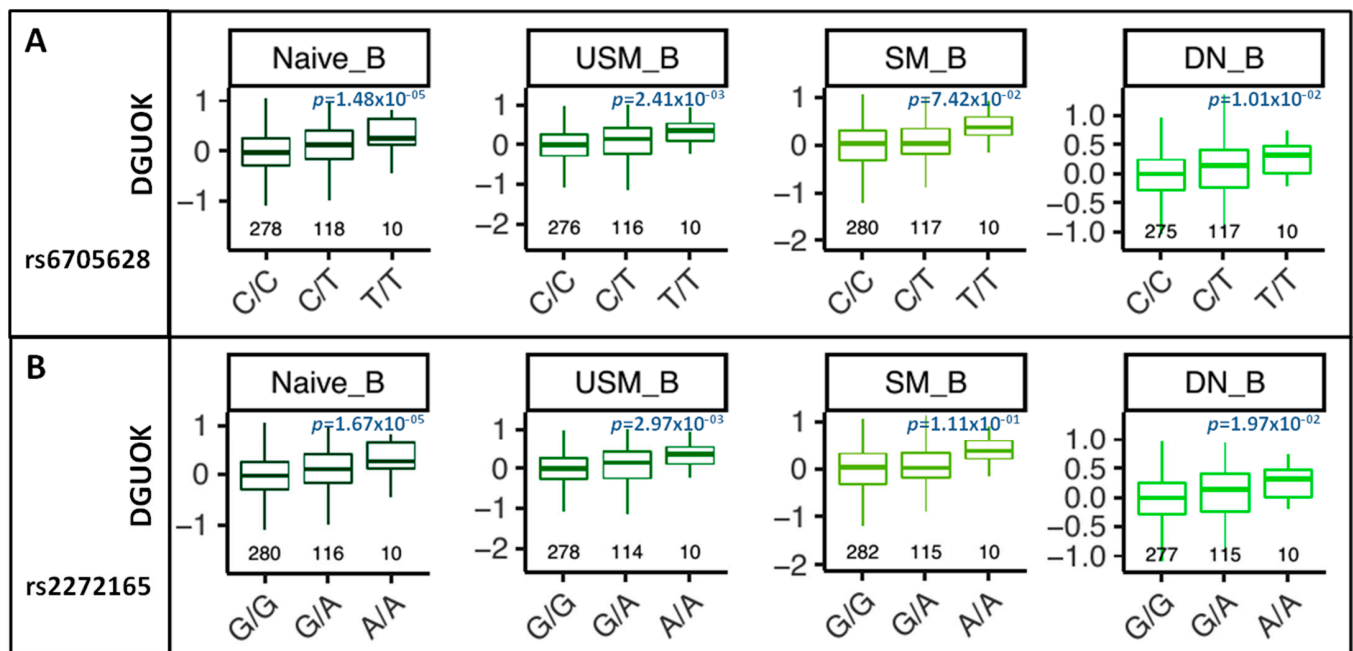
### 3.4. Relationship of *DGUOK* and *DGUOK-AS1*

The lncRNA *DGUOK-AS1* was discovered through RNA-seq on cervical cancer tissues. The lncRNA consists of two exons, one of which overlaps the penultimate coding exon of *DGUOK* (exon 4 or 6, depending on splice isoform) by 60 bases—this is the origin of the name of the lncRNA. We explored existing single-cell RNA-seq data for B-lymphocytes (Coriell lines GM18502, GM12878, LCL\_777\_B958, and LCL\_777\_B958\_M81) and discovered that levels of *DGUOK* and *DGUOK-AS1* are indeed largely negatively correlated (Figure S1), as would be expected if *DGUOK-AS1* is targeting *DGUOK* for inhibition (as do most, but not all, lncRNA-target gene pairs). Thus, the two genes appear to be transcriptionally co-regulated, as predicted from genome structure.

### 3.5. eQTL and sQTL Analysis

To better establish the effects of the SNPs on gene expression, we searched publicly available expression quantitative trait locus (eQTL) databases (based on patient-derived primary cells) for the two SNPs. A detailed eQTL analysis across essentially all blood cell types [24] showed that both rs6705628 and rs2272165 were powerful determinants of *DGUOK* expression levels (Figure 3), particularly in naïve B-cells ( $p = 1.48 \times 10^{-5}$  and  $1.67 \times 10^{-5}$ , respectively), unswitched memory B-cells (USM\_B,  $p = 2.41 \times 10^{-3}$  and  $2.97 \times 10^{-3}$ , respectively), and double-negative effector memory B-cells (DN\_B,  $p = 1.01 \times 10^{-2}$  and  $1.97 \times 10^{-2}$ , respectively). Changes were smaller and less significant in switched memory B-cells (SM\_B). We also found that both SNPs are strong sQTLs for *DGUOK-AS1* in multiple tissues:  $p = 2.1 \times 10^{-24}$  for esophageal mucosa and  $1.7 \times 10^{-15}$  for skin (Figure S2).

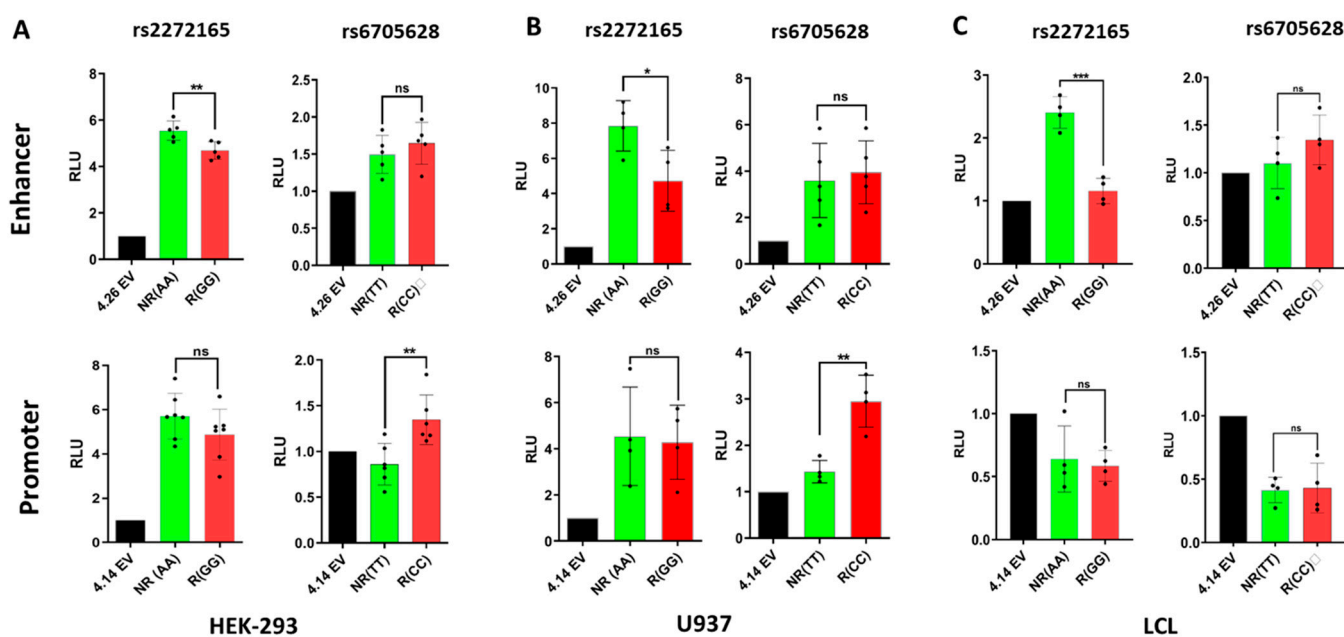




**Figure 3.** Immune cell type-specific eQTL analysis of the influence of rs6705628 (A) and rs2272165 (B) on target gene DGUOK (the only target gene) using transcriptome data from Asian samples. The genotypes and their corresponding sample sizes are shown at the bottom of each box plot. (C/C) is the risk for rs6705628 and (G/G) is the risk for rs2272165. USM = unstimulated, SM = stimulated, DN = double negative.

### 3.6. Validation of Allele-Specific Regulatory Effects of SNPs

To assess allele-specific promoter/enhancer effects of the two SNPs, we performed luciferase reporter assays in three cell lines by transient transfection (HEK293 kidney cells, U937 monocytes, and the Coriell lymphoblastoid B-cell line GM18572—“LCL”; see Methods). In HEK293 cells, the rs2272165 locus showed strong promoter and enhancer activity (~6-fold over the empty vector for both)—the risk G SNP lowered activity ~10% over the non-risk A SNP for both—the difference was significant ( $p = 0.009$ ) for enhancer activity (Figure 4a). The rs6705628 locus showed modest promoter and enhancer activity—the risk C SNP increased activity ~40% ( $p = 0.007$ ) for promoter activity. In U937 cells (Figure 4b), the rs2272165 locus showed stronger promoter and enhancer activity (~4-fold and ~8-fold over the empty vector, respectively), and the risk G SNP had a more profound effect on enhancer activity (40% decrease,  $p = 0.03$ ). The rs6705628 locus also showed much stronger promoter and enhancer activity than in HEK293 cells (40% increase and 4x increase over empty vector)—the risk C SNP increased promoter activity ~2.5-fold ( $p = 0.002$ ). In LCL (Figure 4c), both regions were strong, SNP-independent silencers of promoter activity (~2x less than empty vector). Meanwhile, the rs2272165 locus was a strong enhancer (~2.5x over empty vector)—an effect that was completely abolished by the risk G SNP ( $p = 0.002$ ). Taken together, both genomic loci exhibit strong effects on both promoter and enhancer activities—and a single base pair substitution significantly modulates these effects. Overall, the risk genotype at rs2272165 decreased enhancer and promoter activity across all three cell types, whereas the rs6705628 risk genotype increased enhancer and promoter activity across all cell types.

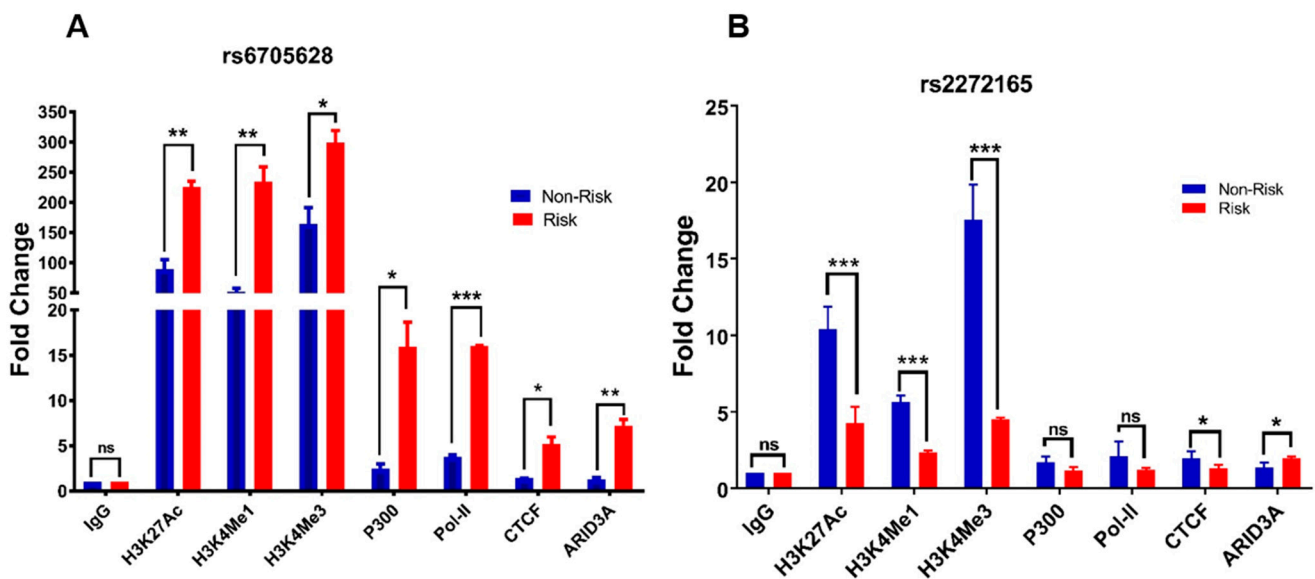


**Figure 4.** Allele-specific promoter and enhancer activity of the two SNPs, using luciferase reporter assays across (A) HEK293 (embryonic kidney cells), (B) U937 (monocyte), and (C) LCL GM18572 (B-lymphocytes). Empty vector pGL4.21 (EV) was used as reference. NR: non-risk and R: risk alleles;  $p$ -values are for Student's  $t$ -test. \*  $p < 0.05$ , \*\*  $p < 0.01$ , \*\*\*  $p < 0.001$ .

### 3.7. Differential Allele-Specific Binding of Regulatory Proteins to SNP Regions

To better understand the allele-specific regulatory activity of both SNP regions, we first sought to establish the set of histone marks and other proteins interacting with the two loci. To recapitulate *in vivo* conditions, we measured binding at the regions in their endogenous chromatin state—with proteins expressed at native levels—by making use of genotyped cells (Coriell B-cell lines) homozygous at the two SNPs. From Coriell lines with the appropriate genetic background (Han Chinese in Beijing, CHB HapMap group), we selected (from published genotyping) two homozygous-risk and six homozygous-non-risk lines for verification by TaqMan. Of these verified lines, we chose GM18572 and GM18553, respectively, to represent the risk and non-risk haplotypes.

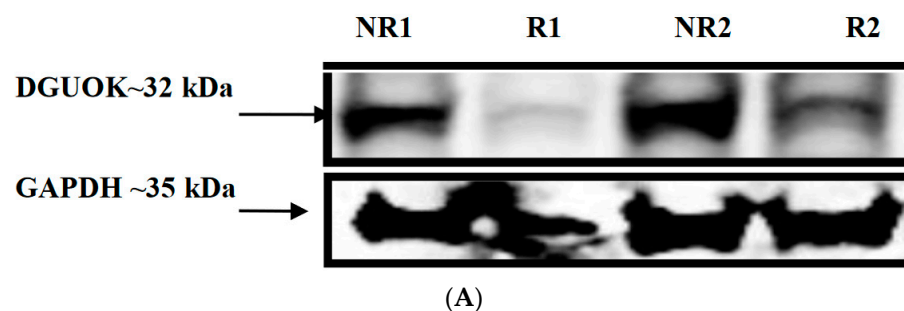
Using ChIP-grade antibodies (Abcam), we measured *in situ* allele-specific binding of the histone marks H3K27ac, H3K4me1, and H3K4me3 to each SNP genotype, quantifying binding with ChIP-qPCR (Figure 5). For rs6705628, all three marks bound significantly more in GM18572 (i.e., the risk CC genotype) than in GM18553 (i.e., the non-risk TT genotype) (H3K27ac:  $p = 0.009$ ,  $\sim 2.3\times$  increase; H3K4me1:  $p = 0.009$ ,  $\sim 5\times$  increase; H3K4me3:  $p = 0.03$ ,  $\sim 2\times$  increase). Conversely, for rs2272165, significantly lower binding was seen for all three marks in GM18572 (i.e., the risk GG genotype) than in GM18553 (i.e., the non-risk AA genotype) (H3K27ac:  $p < 0.001$ ,  $\sim 2.5\times$  decrease; H3K4me1:  $p < 0.001$ ,  $\sim 2.5\times$  decrease; H3K4me3:  $p < 0.001$ ,  $\sim 4\times$  decrease). In general, H3K27ac and H3K4me3 mark active promoters, particularly near transcription start sites, whereas H3K4me1 marks active enhancers. The risk rs2272165 genotype decreased promoter and enhancer activity across cell types (Figure 4); thus ChIP-qPCR results are in complete agreement. Similarly, the risk rs6705628 genotype increased promoter activity in monocytes and HEK293 cells; thus, the rs6705628 ChIP-qPCR results are also consistent. Binding of several other proteins was also dramatically increased in the risk rs6705628 genotype (P300:  $p = 0.021$ ,  $\sim 7\times$  increase; Pol II:  $p < 0.001$ ,  $\sim 4\times$  increase; CTCF:  $p = 0.018$ ,  $\sim 4\times$  increase; ARID3A:  $p = 0.007$ ,  $\sim 6\times$  increase). It is likely that a complex interaction between RNA polymerase, histone marks, chromatin modulators, and cell type-specific components controls transcription from these loci.



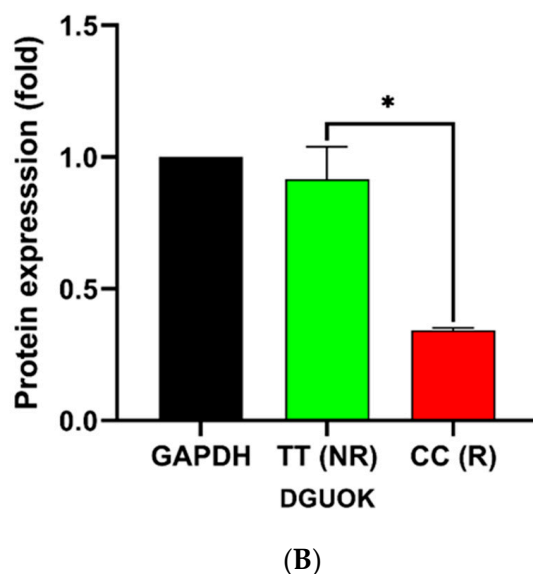
**Figure 5.** Allele-specific ChIP-qPCR of sequences containing SNPs (A) rs6705628 and (B) rs2272165 with histone marks and binding proteins (x-axis) using risk (GM18572) and non-risk (GM18553) LCL lines. *p*-values are for Student's *t*-test. \* *p* < 0.05, \*\* *p* < 0.01, \*\*\* *p* < 0.001.

### 3.8. Western Blot Analysis of DGUOK

Given the large allele-specific effects that we observed from the luciferase and ChIP-seq experiments, we sought to determine if the SNP genotypes dictated protein expression levels as well. Using an antibody specific against the DGUOK protein, we performed Western blots on three LCL lysates, from the homozygous rs2272165/rs6705628 risk/risk genotype (GM18572 and GM18555) and the homozygous non-risk/non-risk genotype (GM18553 and GM18561) (Figure 6). The non-risk GM18553 line showed much higher levels of DGUOK protein expression than the risk 101739 and 101972 lines (~50% and 4.5× higher, respectively). These results are consistent with the luciferase experiments, wherein promoter and enhancer activity were lower for risk than non-risk genotype at all 8 measurements (significantly lower at 3 of them). Thus, the transcriptional effects mediated by these two SNPs translate directly into protein levels—importantly, in relevant white blood cell lines from endogenous chromosomal expression, likely mirroring the *in vivo* situation.



**Figure 6.** *Cont.*



**Figure 6.** Western blot analysis of DGUOK protein in two risk (R1-GM18555, R2-GM18572) and two non-risk (NR1-GM18553, NR2-GM18561) genotype-specific LCLs (B-lymphoblastoid cells). DGUOK protein level was normalized to levels of glyceraldehyde 3-phosphate dehydrogenase (GAPDH). (A) Variation in DGUOK band intensity in genotype-specific LCLs. (B) Densitometry analysis showed that the normalized DGUOK expression was significantly reduced by ~3 fold in risk (R1 and R2; average R) compared to non-risk (NR1 and NR2; average NR) LCLs. *P*-value was determined by Student's *t*-test. \* *p* < 0.05.

#### 4. Discussion

Here we have performed a meta-analysis of the 2p13.1 lupus susceptibility locus across six cohorts from Asian and European populations. The meta-analysis greatly strengthened and refined the association signal in both ancestries, especially predominant in Asian populations. Subsequent conditional analysis localized the association to two non-coding SNPs in the *DGUOK/DGUOK-AS1* locus. Since the allele effects were found in Asians, we used cell type-specific eQTL data from a Japanese population. These two SNPs have strong eQTL signals from primary B-cells, modulating the expression of *DGUOK* significantly. We carried out a series of in vitro experiments on three immortalized cell lines that demonstrated strong promoter and enhancer activity of the local regions around these two SNPs, with the two SNPs greatly modulating activity. The risk allele (G) at rs2272165 decreased enhancer activity across all three cell types. Western blots verified that this decreased transcriptional activity carried over to protein expression, which was several-fold lower in risk genotype cells. For rs2272165, chromatin marks and transcription factor binding were lower in the risk genotype, consistent with the above results. The risk allele (C) at rs6705628 increased promoter and enhancer activity across all three cell types. Consistently, rs6705628 chromatin marks and polymerase residency were significantly higher in the risk genotype. The observation from Western blots that DGUOK protein levels decrease in the risk-risk genotype suggests that the effects of the rs2272165 SNP perhaps outweigh those of the rs6705628 SNP.

Notably, ARID3A—which binds significantly more to the rs6705628 risk genotype—is broadly involved in the development and progression of SLE [37]. ARID3A expression levels in white blood cells correlated with disease activity in patients and were specifically linked to autoantibody production by B-cells. ARID3A expression also drives lineage fate in hematopoiesis, with high expression leading to greater numbers of B-cells, neutrophils, and plasmacytoid dendritic cells in SLE patients. The substantial binding of ARID3A specifically to the risk rs6705628 genotype (consistent with ENCODE data) may modulate downstream disease processes.

This locus was first reported in a meta-analysis, and the rs6705628 was flagged as a risk SNP for SLE in Chinese (odds ratio 0.71,  $p = 3 \times 10^{-8}$ ) [16] and in Chinese and Thai (OR 0.75,  $p = 7 \times 10^{-17}$ ) [15]. It was also noted as a risk locus for rheumatoid arthritis in East Asians and Europeans (OR 0.88,  $p = 7 \times 10^{-9}$ ) [38]. Intriguingly, both risk alleles are the major and ancestral alleles; the derived non-risk alleles are very low abundance in European populations but quite common (~20%) in Asians, suggestive of positive selection for some desirable trait such as infection resistance. In fact, many SLE risk loci are targets of recent positive selection in this manner [39].

The two primary loci regulated by the two SNPs are *DGUOK* (mitochondrial deoxyguanosine kinase), which regulates mitochondrial DNA replication; and *DGUOK-AS1*, an antisense RNA directed against *DGUOK* [15]. *DGUOK* does not have an obvious immune system role and has been primarily studied in the context of mitochondrial DNA depletion and neurodevelopmental disorders [40]. Mitochondria are profoundly involved in the healthy function of the immune system (notably reactive oxygen generation and phagocytosis), though, and many of the most SLE-associated risk genes encode mitochondrial proteins [41], particularly components of mitochondrial NADPH oxidase [42,43], which produces reactive oxygen species. It is not unreasonable that alterations in the level of a critical mediator of mitochondrial DNA copy number and intactness would modulate oxidative phosphorylation (OxPhos), with knock-on effects on the immune system. The risk alleles are associated with lower *DGUOK* levels, potentially leading to less error correction in mitochondrial genomes, with potential downstream effects on other mitochondrial components. Indeed, SLE patients with high disease activity exhibit substantially decreased mitochondrial genome copy number and increased sequence heteroplasmy [44], indicative of error-correction failures.

We found that the *DGUOK-AS1* antisense RNA targets several immune-relevant microRNAs—in addition to the *DGUOK* transcript itself. *DGUOK-AS1* targets miR-1-3p (which facilitates Th17 differentiation [45]), miR-138-5p (which promotes TNF $\alpha$ -induced apoptosis through PTEN/PI3K/Akt signaling [46]), miR-148a-3p and miR-148b-3p (the primary biomarker for lupus nephritis [47] and a potent PTEN activator), miR-151a-3p (another biomarker of lupus nephritis [48]), miR-653-5p (an miRNA active in Behçet's syndrome inflammation [49]), and miR-876-3p (which modulates proliferation and apoptosis in lymphocytic leukemia through JNK signaling [50]). A separate search for non-miRNA genes targeted by *DGUOK-AS1* revealed bradykinin—a key inflammatory mediator—and the lncRNA *Xist*, the primary determinant of X-inactivation and autoimmune sex bias. The fact that *DGUOK-AS1* is predicted to bind to the three most prominent lupus nephritis biomarkers is quite suggestive, although further experiments will be required to validate these predictions and establish mechanisms connecting the function of these miRNAs to SLE and nephritis progression. Similarly, the roles of bradykinin and *Xist*, and their regulation by *DGUOK-AS1* and *DGUOK*, will require further study.

Taken together, we have conclusively demonstrated the association of two SNPs near *DGUOK/DGUOK-AS1* with SLE, established transcriptional regulatory mechanisms and protein-binding effects of the risk alleles, and laid out potential downstream signaling pathways, mediated primarily through mitochondrial OxPhos activity and phagocytosis, and separately through competition with the function of myriad immune-involved microRNAs and *Xist*, the principal determinant of X chromosome inactivation and autoimmune sex bias. In-depth mechanistic studies will further delineate these functional targets for SLE susceptibility.

**Supplementary Materials:** The following supporting information can be downloaded at: <https://www.mdpi.com/article/10.3390/genes13061016/s1>, Figure S1: Relationship between expression levels of *DGUOK* and *DGUOK-AS1* across four Coriell lines studied with single-cell RNA-seq. Figure S2: Splicing QTL (sQTL) interactions of *DGUOK-AS1*. Table S1: Meta-analysis and relevant information for four Asian and two European cohorts. Table S2: Predicted deleteriousness and pathogenicity of the SNPs. Table S3: Experimentally validated microRNA interactions with the

lncRNA *DGUOK-AS1*. Table S4: Predicted coding gene and lncRNA interactions with the lncRNA *DGUOK-AS1*.

**Author Contributions:** Conceptualization, S.K.N.; methodology, S.K.N. and L.L.L.; software, M.F.-N. and S.K.N.; validation, M.K.S. and H.-R.R.; formal analysis, M.F.-N.; investigation, H.-R.R., M.K.S. and J.M.; resources, S.K.N. and L.L.L.; data curation, M.F.-N. and J.M.; writing—original draft preparation, H.-R.R., M.K.S., M.F.-N., L.L.L. and S.K.N.; writing—review and editing, L.L.L. and S.K.N.; visualization, G.P.M.; supervision, L.L.L. and S.K.N.; funding acquisition, S.K.N. All authors have read and agreed to the published version of the manuscript.

**Funding:** This research was funded by the National Institutes of Health grant number AR060366 (S.K.N.).

**Institutional Review Board Statement:** The study was conducted in accordance with the Declaration of Helsinki and approved by the Institutional Review Board of the Oklahoma Medical Research Foundation, IRB 10-23, 5 August 2010.

**Informed Consent Statement:** Informed consent was obtained from all subjects involved in the study.

**Data Availability Statement:** Publicly available datasets were analyzed in this study. The study references and PMIDs are shown in Table 1.

**Acknowledgments:** We thank all patients with SLE and healthy controls who participated in this study. We also thank the research assistants, coordinators, and physicians who helped in the recruitment of subjects for this project.

**Conflicts of Interest:** The authors declare no conflict of interest.

## References

- Karrar, S.; Graham, D.S.C. Abnormal B Cell Development in Systemic Lupus Erythematosus: What the Genetics Tell Us. *Arthritis Rheumatol.* **2018**, *70*, 496–507. [[CrossRef](#)] [[PubMed](#)]
- Morawski, P.A.; Bolland, S. Expanding the B Cell-Centric View of Systemic Lupus Erythematosus. *Trends Immunol.* **2017**, *38*, 373–382. [[CrossRef](#)]
- García-Carrasco, M.; Mendoza Pinto, C.; Solís Poblano, J.C.; Morales, I.E.; Cervera, R.; Anaya, J.M. Systemic lupus erythematosus. In *Autoimmunity: From Bench to Bedside*; Shoenfeld, Y., Anaya, J.M., Rojas-Villarraga, A., Levy, R.A., Cervera, R., Eds.; El Rosario University Press: Bogota, Colombia, 2013.
- Moulton, V.R.; Suarez-Fueyo, A.; Meidan, E.; Li, H.; Mizui, M.; Tsokos, G.C. Pathogenesis of Human Systemic Lupus Erythematosus: A Cellular Perspective. *Trends Mol. Med.* **2017**, *23*, 615–635. [[CrossRef](#)]
- Tsokos, G.C. Autoimmunity and organ damage in systemic lupus erythematosus. *Nat. Immunol.* **2020**, *21*, 605–614. [[CrossRef](#)]
- Izmirly, P.M.; Parton, H.; Wang, L.; McCune, W.J.; Lim, S.S.; Drenkard, C.; Ferucci, E.D.; Dall’Era, M.; Gordon, C.; Helmick, C.G.; et al. Prevalence of Systemic Lupus Erythematosus in the United States: Estimates From a Meta-Analysis of the Centers for Disease Control and Prevention National Lupus Registries. *Arthritis Rheumatol.* **2021**, *73*, 991–996. [[CrossRef](#)]
- Alarcon-Segovia, D.; Alarcón-Riquelme, M.E.; Cardiel, M.H.; Caeiro, F.; Massardo, L.; Villa, A.R.; Pons-Estel, B.A.; on behalf of the Grupo Latinoamericano de Estudio del Lupus Eritematoso (GLADEL). Familial aggregation of systemic lupus erythematosus, rheumatoid arthritis, and other autoimmune diseases in 1177 lupus patients from the GLADEL cohort. *Arthritis Rheum.* **2005**, *52*, 1138–1147. [[PubMed](#)]
- Drenkard, C.; Lim, S.S. Update on lupus epidemiology: Advancing health disparities research through the study of minority populations. *Curr. Opin. Rheumatol.* **2019**, *31*, 689–696. [[CrossRef](#)]
- Maningding, E.; Dall’Era, M.; Trupin, L.; Murphy, L.B.; Yazdany, J. Racial and Ethnic Differences in the Prevalence and Time to Onset of Manifestations of Systemic Lupus Erythematosus: The California Lupus Surveillance Project. *Arthritis Care Res.* **2020**, *72*, 622–629. [[CrossRef](#)]
- Deapen, D.; Escalante, A.; Weinrib, L.; Horwitz, D.; Bachman, B.; Roy-Burman, P.; Walker, A.; Mack, T.M. A revised estimate of twin concordance in systemic lupus erythematosus. *Arthritis Rheum.* **1992**, *35*, 311–318. [[PubMed](#)]
- Kuo, C.F.; Grainge, M.J.; Valdes, A.M.; See, L.; Luo, S.; Yu, K.; Zhang, W.; Doherty, M. Familial Aggregation of Systemic Lupus Erythematosus and Coaggregation of Autoimmune Diseases in Affected Families. *JAMA Intern. Med.* **2015**, *175*, 1518–1526. [[CrossRef](#)]
- Yin, X.; Kim, K.; Suetsugu, H.; Bang, S.; Wen, L.; Koido, M.; Ha, E.; Liu, L.; Sakamoto, Y.; Jo, S. Meta-analysis of 208370 East Asians identifies 113 susceptibility loci for systemic lupus erythematosus. *Ann. Rheum. Dis.* **2020**, *80*, 632–640. [[CrossRef](#)]
- Ha, E.; Bae, S.C.; Kim, K. Recent advances in understanding the genetic basis of systemic lupus erythematosus. *Semin. Immunopathol.* **2021**, *44*, 29–46. [[CrossRef](#)]
- Cannon, M.E.; Mohlke, K.L. Deciphering the Emerging Complexities of Molecular Mechanisms at GWAS Loci. *Am. J. Hum. Genet.* **2018**, *103*, 637–653. [[CrossRef](#)]

15. Yang, W.; Tang, H.; Zhang, Y.; Tang, X.; Zhang, J.; Sun, L.; Yang, J.; Cui, Y.; Zhang, L.; Hirankarn, N.; et al. Meta-analysis followed by replication identifies loci in or near CDKN1B, TET3, CD80, DRAM1, and ARID5B as associated with systemic lupus erythematosus in Asians. *Am. J. Hum. Genet.* **2013**, *92*, 41–51. [[CrossRef](#)]
16. Morris, D.L.; Sheng, Y.; Zhang, Y.; Wang, Y.; Zhu, Z.; Tombleson, P.; Chen, L.; Cunninghame Graham, D.S.; Bentham, J.; Roberts, A.L.; et al. Genome-wide association meta-analysis in Chinese and European individuals identifies ten new loci associated with systemic lupus erythematosus. *Nat. Genet.* **2016**, *48*, 940–946. [[CrossRef](#)] [[PubMed](#)]
17. Sun, C.; Molineros, J.E.; Looger, L.L.; Zhou, X.; Kim, K.; Okada, Y.; Ma, J.; Qi, Y.; Kim-Howard, X.; Motghare, P.; et al. High-density genotyping of immune-related loci identifies new SLE risk variants in individuals with Asian ancestry. *Nat. Genet.* **2016**, *48*, 323–330. [[CrossRef](#)] [[PubMed](#)]
18. Julià, A.; López-Longo, F.J.; Venegas, J.J.P.; Bonàs-Guarch, S.; Olivé, À.; Andreu, J.L.; Aguirre-Zamorano, M.Á.; Vela, P.; Nolla, J.M. Genome-wide association study meta-analysis identifies five new loci for systemic lupus erythematosus. *Arthritis Res. Ther.* **2018**, *20*, 100. [[CrossRef](#)]
19. Purcell, S.; Neale, B.; Todd-Brown, K.; Thomas, L.; Ferreira, M.A.R.; Bender, D.; Maller, J.; Sklar, P.; de Bakker, P.I.W.; Daly, M.J.; et al. PLINK: A tool set for whole-genome association and population-based linkage analyses. *Am. J. Hum. Genet.* **2007**, *81*, 559–575. [[CrossRef](#)]
20. Willer, C.J.; Li, Y.; Abecasis, G.R. METAL: Fast and efficient meta-analysis of genomewide association scans. *Bioinformatics* **2010**, *26*, 2190–2191. [[CrossRef](#)]
21. Yang, J.; Ferreira, T.; Morris, A.P.; Medland, S.E.; Madden, P.A.F.; Heath, A.C.; Martin, N.G.; Montgomery, G.W.; Weedon, M.N.; Loos, R.J.; et al. Conditional and joint multiple-SNP analysis of GWAS summary statistics identifies additional variants influencing complex traits. *Nat. Genet.* **2012**, *44*, 369–375. [[CrossRef](#)]
22. Ward, L.D.; Kellis, M. HaploReg: A resource for exploring chromatin states, conservation, and regulatory motif alterations within sets of genetically linked variants. *Nucleic Acids Res.* **2012**, *40*, D930–D934. [[CrossRef](#)] [[PubMed](#)]
23. Bendl, J.; Musil, M.; Štourač, J.; Zendulka, J.; Damborský, J.; Brezovský, J. PredictSNP2: A Unified Platform for Accurately Evaluating SNP Effects by Exploiting the Different Characteristics of Variants in Distinct Genomic Regions. *PLoS Comput. Biol.* **2016**, *12*, e1004962. [[CrossRef](#)]
24. Ota, M.; Nagafuchi, Y.; Hatano, H.; Ishigaki, K.; Terao, C.; Takeshima, Y.; Yanaoka, H.; Kobayashi, S.; Okubo, M.; Shirai, H.; et al. Dynamic landscape of immune cell-specific gene regulation in immune-mediated diseases. *Cell* **2021**, *184*, 3006–3021. [[CrossRef](#)] [[PubMed](#)]
25. Li, D.; Purushotham, D.; Harrison, J.K.; Hsu, S.; Zhuo, X.; Fan, C.; Liu, S.; Xu, V.; Chen, S.; Xu, J.; et al. WashU Epigenome Browser update 2022. *Nucleic Acids Res.* **2022**. [[CrossRef](#)]
26. Javierre, B.M.; Burren, O.; Wilder, S.P.; Kreuzhuber, R.; Hill, S.; Sewitz, S.; Cairns, J.; Wingett, S.W.; Várnai, C.; Thiecke, M.J.; et al. Lineage-Specific Genome Architecture Links Enhancers and Non-coding Disease Variants to Target Gene Promoters. *Cell* **2016**, *167*, 1369–1384. [[CrossRef](#)] [[PubMed](#)]
27. Karagkouni, D.; Paraskevopoulou, M.D.; Tastsoglou, S.; Skoufos, G.; Karavangeli, A.; Pierros, V.; Zacharopoulou, E.; Hatzigeorgiou, A.G. DIANA-LncBase v3: Indexing experimentally supported miRNA targets on non-coding transcripts. *Nucleic Acids Res.* **2019**, *48*, D101–D110. [[CrossRef](#)]
28. Fukunaga, T.; Iwakiri, J.; Ono, Y.; Hamadae, M. LncRRlsearch: A Web Server for lncRNA-RNA Interaction Prediction Integrated With Tissue-Specific Expression and Subcellular Localization Data. *Front. Genet.* **2019**, *10*, 462. [[CrossRef](#)]
29. Osorio, D.; Yu, X.; Serpedin, E.; Cai, J.J. Single-cell RNA sequencing of a European and an African lymphoblastoid cell line. *Sci. Data* **2019**, *6*, 112. [[CrossRef](#)]
30. SoRelle, E.D.; Dai, J.; Bonglack, E.N.; Heckenberg, E.M.; Zhou, J.Y.; Giambardino, S.N.; Bailey, J.A.; Gregory, S.G.; Chan, C.; Luftig, M.A. Single-cell RNA-seq reveals transcriptomic heterogeneity mediated by host-pathogen dynamics in lymphoblastoid cell lines. *eLife* **2021**, *10*, e62586. [[CrossRef](#)] [[PubMed](#)]
31. Li, Y.; Liang, Y.; Ma, T.; Yang, Q. Identification of DGUOK-AS1 as a Prognostic Factor in Breast Cancer by Bioinformatics Analysis. *Front. Oncol.* **2020**, *10*, 1092. [[CrossRef](#)]
32. Liang, Y.; Ye, F.; Wang, Y.; Li, Y.; Li, Y.; Song, X.; Luo, D.; Long, L.; Han, D.; Liu, Y.; et al. DGUOK-AS1 acts as a tumor promoter through regulating miR-204-5p/IL-11 axis in breast cancer. *Mol. Ther. Nucleic Acids* **2021**, *26*, 1079–1091. [[CrossRef](#)]
33. Vanarsa, K.; Henderson, J.; Soomro, S.; Qin, L.; Zhang, T.; Jordan, N.; Putterman, C.; Blanco, I.; Saxena, R.; Mohan, C. Upregulation of Proinflammatory Bradykinin Peptides in Systemic Lupus Erythematosus and Rheumatoid Arthritis. *J. Immunol.* **2020**, *205*, 369–376. [[CrossRef](#)]
34. Brubaker, S.W.; Bonham, K.S.; Zanoni, I.; Kagan, J.C. Innate Immune Pattern Recognition: A Cell Biological Perspective. *Annu. Rev. Immunol.* **2015**, *33*, 257–290. [[CrossRef](#)]
35. Penny, G.D.; Kay, G.F.; Sheardown, S.A.; Rastan, S.; Brockdorff, N. Requirement for Xist in X chromosome inactivation. *Nature* **1996**, *379*, 131–137. [[CrossRef](#)]
36. Bost, C.; Arleevskaya, M.I.; Brooks, W.H.; Plaza, S.; Guery, J.-C.; Renaudineau, Y. Long non-coding RNA Xist contribution in systemic lupus erythematosus and rheumatoid arthritis. *Clin. Immunol.* **2022**, *236*, 108937. [[CrossRef](#)]
37. Garton, J.; Barron, M.D.; Ratliff, M.L.; Webb, C.F. New Frontiers: ARID3a in SLE. *Cells* **2019**, *8*, 1136. [[CrossRef](#)]

38. Ha, E.; Bae, S.-C.; Kim, K. Large-scale meta-analysis across East Asian and European populations updated genetic architecture and variant-driven biology of rheumatoid arthritis, identifying 11 novel susceptibility loci. *Ann. Rheum. Dis.* **2021**, *80*, 558–565. [[CrossRef](#)]
39. Ramos, P.S.; Shaftman, S.R.; Ward, R.C.; Langefeld, C.D. Genes Associated with SLE Are Targets of Recent Positive Selection. *Autoimmune Dis.* **2014**, *2014*, 203435. [[CrossRef](#)]
40. Freisinger, P.; Fütterer, N.; Lankes, E.; Gempel, K.; Berger, T.M.; Spalinger, J.; Hoerbe, A.; Schwantes, C.; Lindner, M.; Santer, R.; et al. Hepatocerebral Mitochondrial DNA Depletion Syndrome Caused by Deoxyguanosine Kinase (DGUOK) Mutations. *Arch. Neurol.* **2006**, *63*, 1129–1134. [[CrossRef](#)]
41. Chen, P.-M.; Tsokos, G.C. Mitochondria in the Pathogenesis of Systemic Lupus Erythematosus. *Curr. Rheumatol. Rep.* **2022**, *24*, 88–95. [[CrossRef](#)]
42. Jacob, C.O.; Eisenstein, M.; Dinauer, M.C.; Ming, W.; Liu, Q.; John, S.; Quismorio, F.P.; Reiff, A.; Myones, B.L.; Kaufman, K.M.; et al. Lupus-associated causal mutation in neutrophil cytosolic factor 2 (NCF2) brings unique insights to the structure and function of NADPH oxidase. *Proc. Natl. Acad. Sci. USA* **2012**, *109*, E59–E67. [[CrossRef](#)] [[PubMed](#)]
43. Olsson, L.M.; Johansson, Å.C.; Gullstrand, B.; Jönsen, A.; Saevarsdottir, S.; Rönnblom, L.; Leonard, D.; Wetterö, J.; Sjöwall, C.; Svenungsson, E.; et al. A single nucleotide polymorphism in the NCF1 gene leading to reduced oxidative burst is associated with systemic lupus erythematosus. *Ann. Rheum. Dis.* **2017**, *76*, 1607–1613. [[CrossRef](#)] [[PubMed](#)]
44. Lee, H.-T.; Lin, C.-S.; Chen, W.-S.; Liao, H.-T.; Tsai, C.-Y.; Wei, Y.-H. Leukocyte Mitochondrial DNA Alteration in Systemic Lupus Erythematosus and Its Relevance to the Susceptibility to Lupus Nephritis. *Int. J. Mol. Sci.* **2012**, *13*, 8853–8868. [[CrossRef](#)]
45. Li, L.; Ma, X.; Zhao, Y.-F.; Zhang, C. MiR-1-3p facilitates Th17 differentiation associating with multiple sclerosis via targeting ETS1. *Eur. Rev. Med. Pharm. Sci.* **2020**, *24*, 6881–6892.
46. Wang, B.; Wang, D.; Yan, T.; Yuan, H. MiR-138-5p promotes TNF- $\alpha$ -induced apoptosis in human intervertebral disc degeneration by targeting SIRT1 through PTEN/PI3K/Akt signaling. *Exp. Cell Res.* **2016**, *345*, 199–205. [[CrossRef](#)] [[PubMed](#)]
47. Alkhateeb, D.M.; Altamemi, A. Circulating Microna (148b and 150) as Potential Biomarker in Iga Nephropathy and Lupus Nephritis. *Ann. Rom. Soc. Cell Biol.* **2021**, *25*, 6294–6309.
48. Xiao, H.; Wei, N.; Su, M.; Xiong, Z. Down-regulation of serum miR-151a-3p is associated with renal tissue activity in class IV lupus nephritis. *Clin. Exp. Rheumatol.* **2019**, *37*, 67–72. [[PubMed](#)]
49. Emmi, G.; Bagni, G.; Lastraioli, E.; di Patti, F.; Bettioli, A.; Fiorillo, C.; Becatti, M.; Silvestri, E.; Urban, M.L.; Emmi, L.; et al. A unique circulating miRNA profile highlights thrombo-inflammation in Behçet’s syndrome. *Ann. Rheum. Dis.* **2022**, *81*, 386–397. [[CrossRef](#)] [[PubMed](#)]
50. Mao, J.; Gao, W.; Xue, L.; Wang, J.; Zhao, L. The lncRNA SLCO4A1-AS1/miR-876-3p/RBBP6 axis regulates cell proliferation and apoptosis in acute lymphocytic leukemia via the JNK signaling pathway. *Int. J. Lab. Hematol.* **2021**, *43*, 1050–1061. [[CrossRef](#)]