

UC Davis

UC Davis Previously Published Works

Title

Reemergence of St. Louis Encephalitis Virus, California, 2015 - Volume 22, Number 12—December 2016 - Emerging Infectious Diseases journal - CDC

Permalink

<https://escholarship.org/uc/item/8d96n0w9>

Journal

Emerging Infectious Diseases, 22(12)

ISSN

1080-6040

Authors

White, Gregory S

Symmes, Kelly

Sun, Pu

et al.

Publication Date

2016-12-01

DOI

10.3201/eid2212.160805

Copyright Information

This work is made available under the terms of a Creative Commons Attribution License, available at <https://creativecommons.org/licenses/by/4.0/>

Peer reviewed

Reemergence of St. Louis Encephalitis Virus, California, 2015

Gregory S. White,¹ Kelly Symmes,¹ Pu Sun, Ying Fang, Sandra Garcia, Cody Steiner, Kirk Smith, William K. Reisen, Lark L. Coffey

St. Louis encephalitis virus infection was detected in summer 2015 in southern California after an 11-year absence, concomitant with an Arizona outbreak. Sequence comparisons showed close identity of California and Arizona isolates with 2005 Argentine isolates, suggesting introduction from South America and underscoring the value of continued arbovirus surveillance.

St. Louis encephalitis virus (SLEV; family *Flaviviridae*, genus *Flavivirus*) was recognized in California in 1937 and caused periodic epidemics in humans and equines until 1989, including a 1984 outbreak in Los Angeles (1–3). Even though US epidemics have not occurred since 1989, SLEV activity was documented continually in California until 2003, the year West Nile virus (WNV) activity was detected in the state. During 2003–2015, no SLEV activity was detected in California despite ongoing SLEV surveillance and a 6-fold statewide increase in mosquito pool testing in response to the invasion of WNV. The absence of SLEV activity suggested its elimination from California (4,5).

In Arizona, SLEV has been detected less frequently than in California, with low enzootic activity reported most years during 1972–2006 (Arizona State Public Health Laboratory, unpub. data) and a single human case during 2010–2014 (6). In Maricopa County, which includes Phoenix, a human SLEV outbreak during July–October 2015 resulted in 23 confirmed cases and 1 death (Arizona State Public Health Laboratory, unpub. data).

Beginning in July 2015, SLEV activity was detected in mosquito pools, and sentinel chicken seroconversions were detected in the Coachella Valley in Riverside County, California. Given the reemergence of SLEV in California and Arizona in summer 2015, the purpose of this study was to describe the temporal and spatial detection

of SLEV in California, compare its circulation intensity with that of WNV in California in 2015, and define the genetic relatedness of SLEV from both states to SLEV from elsewhere to infer a possible origin and pattern of spread.

The Study

Mosquito and arbovirus surveillance was conducted in the Coachella Valley in 2015 (Figure 1, panel A). SLEV RNA was first detected in a pool of *Culex tarsalis* mosquitoes by quantitative reverse transcription PCR on July 28, 2015, and subsequently in 37 more pools of the same species through October 6 (7). The number of SLEV-positive pools peaked at 23 during the first 2 weeks of August. WNV was detected in mosquitoes during April–November 2015, with a peak in the week of June 21. Although SLEV was detected only in *Cx. tarsalis* pools, WNV RNA was detected in 83 *Cx. quinquefasciatus* pools during April 24–November 5 and in 16 *Cx. tarsalis* pools during May 19–September 29. During the period of co-detection of both viruses (July–November), peak minimum infection rates were higher for WNV than for SLEV.

Vector abundance did not parallel peak infection rates (June for WNV and August for SLEV). Instead, vector abundance in 2015 was lower at most times than the 5-year average, calculated as the geometric mean of female *Cx. tarsalis* and *Cx. quinquefasciatus* mosquitoes collected bimonthly in traps at the same locations during 2010–2014 (8). The trend of decreasing mosquito abundance in midsummer in southern California (especially in the Coachella Valley), concurrent with increasing arbovirus activity, has been well documented (9). This trend most likely relates to changes in age structure, with progressively more parous female mosquitoes tested as overall vector population numbers decline. Sentinel chicken seroconversion to SLEV, detected by enzyme immunoassay and confirmed by plaque-reduction neutralization test, was detected during August 28–November 9, with a total of 9 seroconversions in 104 chickens (8.7% seropositive) (10,11). WNV seropositive chicken serum samples were also reported starting on August 28, but with fewer ($n = 6$ [5.7%] of serum specimens tested) seroconversions to WNV than to SLEV.

Although most mosquito pools contained detectable RNA for only WNV or SLEV, 4 pools tested positive for both viruses. Both viruses were circulating in the summer

Author affiliations: Coachella Valley Mosquito and Vector Control District, Indio, California, USA (G.S. White); School of Veterinary Medicine, University of California, Davis, California (K. Symmes, P. Sun, Y. Fang, S. Garcia, C. Steiner, W.K. Reisen, L.L. Coffey); Environmental Services Department, Maricopa County, Phoenix, Arizona, USA (K. Smith)

DOI: <http://dx.doi.org/10.3201/eid2212.160805>

¹These authors contributed equally to this article.

of 2015 at the north and west shores of the Salton Sea in the Coachella Valley (Figure 1, panel B). SLEV activity was more focal than WNV activity and was limited to *Cx. tarsalis* mosquitoes collected in a 20-km radius near

wetlands and agricultural habitats by the Salton Sea, whereas WNV activity spanned >80 km and was concentrated in *Cx. quinquefasciatus* mosquitoes collected in more densely populated residential habitats in the central part of the Coachella Valley. Co-circulation of both viruses in ecologically diverse habitats near the Salton Sea at the same time shows that early-season WNV activity did not preclude later SLEV circulation.

Unlike California, where continual SLEV testing has been conducted since 1969, the absence of SLEV activity in mosquitoes in Arizona during 2010–2014 may have been due to a lack of recent SLEV testing. Maricopa County began testing mosquito pools for SLEV RNA during the 2015 human epidemic and then retrospectively detected SLEV in an archived WNV-positive mosquito pool from November 2014. We sequenced complete genomes of 1 SLEV isolate from California in 2015 and two isolates from Arizona in 2015, and partial genomes of the 2014 isolate from Arizona and 1 additional 2015 California isolate from reverse transcription PCR amplicons using SLEV primers (Table; GenBank accession nos. KX258460–62 [California], KX965720 [Arizona]). We further determined the phylogenetic relationships of the sequenced isolates with each other and with complete SLEV genomes from GenBank, including another 2015 Arizona isolate (strain 121B, GenBank accession no. KT823415) sequenced by the Centers for Disease Control and Prevention (Figure 2). The 2014 and 2015 California and Arizona SLEV isolates share >99% nucleotide identity with each other and also with their closest published relative, isolated from *Cx. quinquefasciatus* mosquitoes collected in Cordoba, Argentina, in 2005. The 2015 SLEV isolates are genetically distinct from the 2003 Imperial Valley California strain that was isolated before the 11-year absence of SLEV activity in the state. These results suggest that there was likely a single introduction of SLEV into the United States from South America (possibly Argentina) no later than November 2014, the earliest dated sample from which SLEV was isolated in Arizona, and that the virus spread in the summer of 2015 from Arizona to California. Notably, 1,710 mosquito pools representing 65,287 individual mosquitoes from the Coachella Valley were negative for SLEV during 2014.

Because human SLEV viremia levels are low and insufficient to infect mosquitoes, the virus may have been introduced into the United States from South or Central America by a viremic migratory bird or possibly by an infected mosquito exploiting human transportation (12). Earlier US SLEV strains from Tennessee and Texas isolated in 1974 and 2001, respectively, are most closely related to 1969 and 1978 Guatemalan strains (Figure 2). A similar ancestral topology of Brazil and Peru strains from the 1970s to the 2003 California isolate also suggests

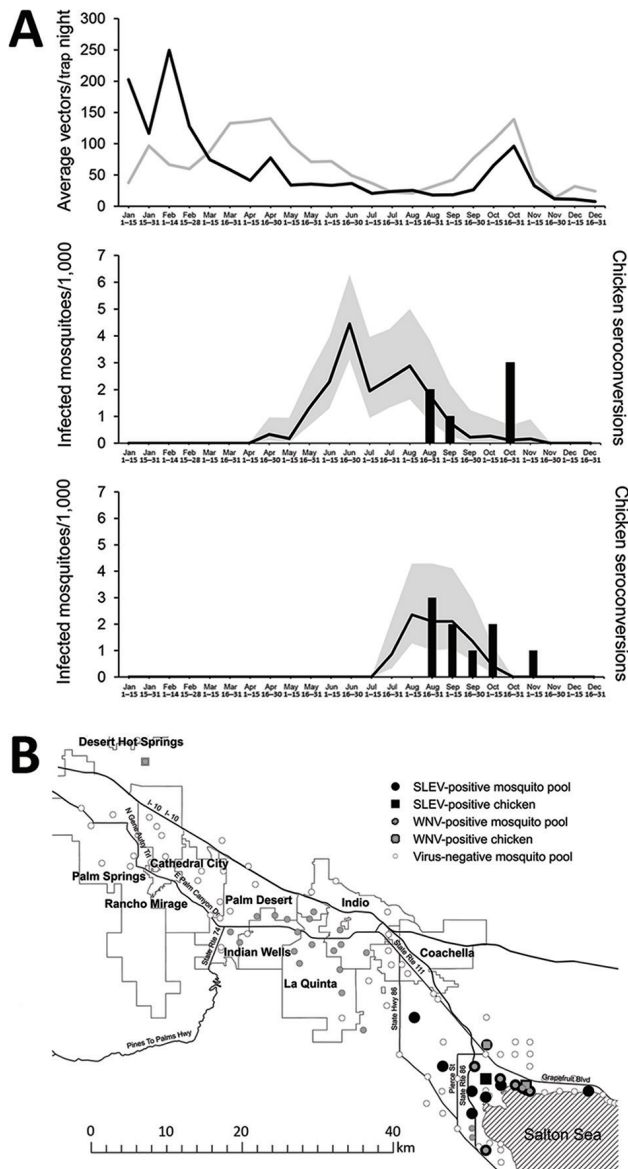


Figure 1. St. Louis encephalitis virus (SLEV) and West Nile virus (WNV) surveillance in mosquitoes and sentinel chickens in Coachella Valley, Riverside County, California, USA, 2015. A) Vector abundance (upper panel) from the same locations in all of Riverside County at bimonthly intervals during 2010–2014 (gray line) and in 2015 (black line), and infection rates for WNV (middle) and SLEV (lower) based on maximum likelihood estimates (black lines) with 95% CI (gray shading) in female *Culex tarsalis* and *Cx. quinquefasciatus* mosquitoes collected in CO₂ and gravid traps and number of sentinel chicken seroconversions (black bars). B) Geographic locations of SLEV (black) and WNV (gray) activity identified by viral RNA detection in mosquito pools (circles) or sentinel chicken seroconversions (squares), July–October 2015.

Table. Primers used to sequence complete genomes of SLEV in study of reemergence of the virus in Arizona and California, USA, 2015*

Name	Sequence, 5' → 3'	Location of primer binding site at 5' nucleotide on SLEV 2005 isolate CbAr4005†
2300F	GGATTACACAGGGACTACTTGG	2339
2300R	TCTGTATGCTCTCCCACATTAAG	2672
2700F	CCTGAAGAAGCTGGAAGATGAG	2786
2700R	CGCTTCAATAACGCCATCAC	3175
5700F	GGTGATTCAGCTAAACAGGAAGA	5753
5700R	GTGATTGCCATGGGTCCATTA	5936
800F	CAATCCTGGATATGCCCTAGTT	852
800R	ACGGTCCACAACATCTCTTT	1241
9000F	CCAAAGTTCTGGAAATGGTTG	8981
9000R	CATAGGAATTCTCACGGCTCAT	9189
F1	GAGCGGAGAGGAAACAGATTT	17
F10	CGGAGCTGTGACTCTTGATTT	4976
F11	AGGCCGTATTGGAGAAATC	5981
F12	CACGACGCAGTATGTGAACT	7099
F13	GGAGTGGACGTGTTCCATAA	8069
F15	GAGTGAACACCATGCCAAATC	9099
F16	TGGTAGGAGGAGTCTGTAA	10393
F2	GGAGAAGTCATGGCTGGTAAA	1584
F3	CCCTGGAGTGAAGGAGAAATAAC	3276
F4	GGTTCCCAACTACCAAGTTTA	5431
F7	GTTGAGTGGCTAAGGAAGAA	9635
F8	CATTCTTGGCGGGTTTGTTT	3796
F9	GCAATAGCTGGGCTGATGTA	4315
R1	CGCTGGTCGCTAGAAAGATTAG	2488
R10	CGGAGCTGTGACTCTTGATTT	5418
R12	CAGATAGCCCTGCTTCTTTAG	9099
R2	AGCACACAAGATGGGAAGAG	3985
R3	GAAGCTGGTGATCCACTCATAC	5651
R4	ACGATTCCGCTTTTCTGTATG	7761
R5	GCCCACTCCTGTTCTTTTATC	8417
R6	CATCCTGCTCCTGGTGAAT	9924
R7	CCTGTCTTTCCAGGTGTCAATA	3185
R8	GGGATTGACCGTAACCAATCT	2023

*SLEV, St. Louis encephalitis virus.

†GenBank accession no. FJ753286.2.

movement from South to North America. The Salton Sea and associated habitats possess diverse avifauna and may serve as a resting point for SLEV-infected migratory birds that traverse the Pacific flyway (13). Alternately, SLEV may have come from elsewhere in the United States after being introduced from South or Central America, but sequences from US states reporting SLEV activity in recent years are not publicly available. In the case of east-to-west movement across the United States, postnesting birds may have mediated spread by way of agricultural areas of northern Mexico. However, it is unknown whether SLEV is active in Mexico or the Imperial Valley, which lies between Phoenix and the Coachella Valley, because surveillance is not performed in those regions.

Conclusions

Our findings highlight how mosquito-borne viruses are emerging and reemerging to establish autochthonous transmission, including SLEV in southern California that produced severe and fatal human disease in 2015 in Arizona (6). Prospective surveillance can identify viruses circulating in mosquitoes even in the absence of human cases of

infection, as in Coachella Valley in 2015, and may provide an early warning of future outbreaks.

A stipend to support K.S. was provided by a Veterinary Medicine Students Training in Advanced Research (STAR) fellowship at the University of California, Davis, School of Veterinary Medicine. The research was supported by start-up funds provided to L.L.C. by the Department of Pathology, Microbiology, and Immunology, at the University of California, Davis, School of Veterinary Medicine.

Dr. White has worked at the Coachella Valley Mosquito and Vector Control District for the past 6 years, studying the transmission of arboviruses and mosquito control methods.

References

1. Murray R, Habel L, Mackey K, Wallace, Peck BA, Mora SJ, et al. Epidemiologic aspects of the 1984 St. Louis encephalitis epidemic in southern California. *Proceedings of the California Mosquito and Vector Control Association*. 1985;53:5–9.
2. Reisen WK, Meyer RP, Milby MM, Presser SB, Emmons RW, Hardy JL, et al. Ecological observations on the 1989 outbreak of St. Louis encephalitis virus in the southern San Joaquin Valley of California. *J Med Entomol*. 1992;29:472–82. <http://dx.doi.org/10.1093/jmedent/29.3.472>

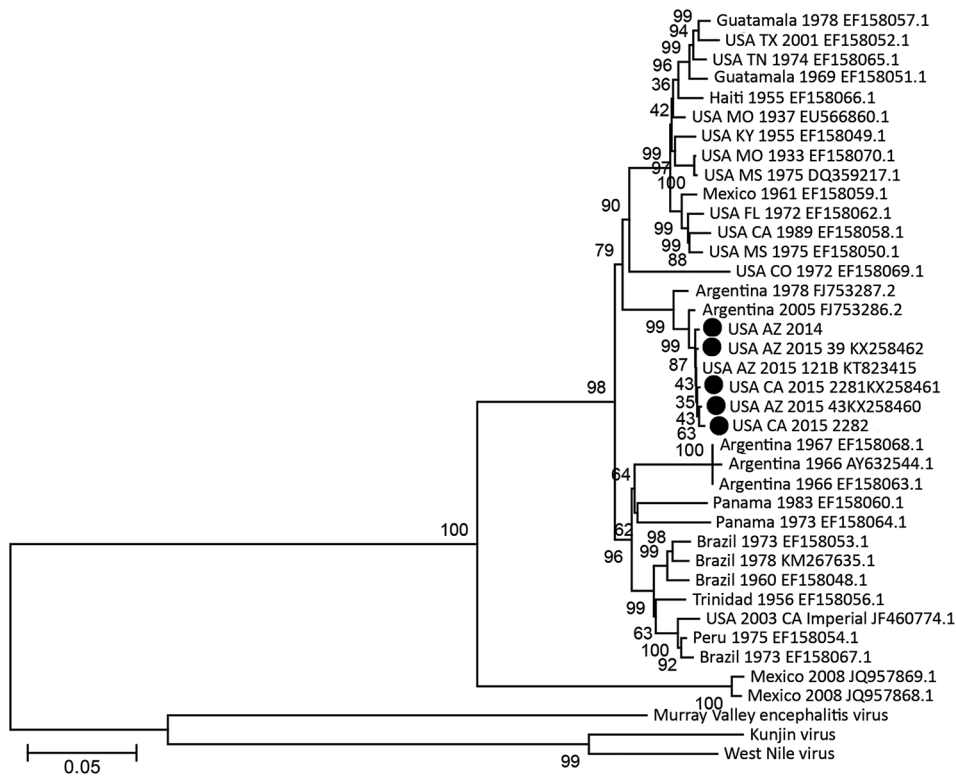


Figure 2. St. Louis encephalitis virus phylogeny with 2015 California (USA CA) and 2014 and 2015 Arizona (USA AZ) genomes (black circles). Complete nucleotide genomes (except for isolate 2282, which included only the E gene) were compared by using a neighbor-joining algorithm and 1,000 bootstrap replicates (support numbers at nodes) by using MEGA 7 (14). Isolates are named according to location, year of isolation, strain name, and GenBank accession number. Scale bar indicates nucleotide substitutions per site.

- Howitt BF. Viruses of equine and of St. Louis encephalitis in relationship to human infections in California, 1937–1938. *Am J Public Health Nations Health.* 1939;29:1083–97. <http://dx.doi.org/10.2105/AJPH.29.10.1083>
- Reisen WK, Lothrop HD, Wheeler SS, Kennington M, Gutierrez A, Fang Y, et al. Persistent West Nile virus transmission and the apparent displacement St. Louis encephalitis virus in south-eastern California, 2003–2006. *J Med Entomol.* 2008;45:494–508.
- Fang Y, Reisen WK. Previous infection with West Nile or St. Louis encephalitis viruses provides cross protection during reinfection in house finches. *Am J Trop Med Hyg.* 2006;75:480–5.
- Venkat H, Krow-Lucal E, Hennessey M, Jones J, Adams L, Fischer M, et al. Concurrent outbreaks of St. Louis encephalitis virus and West Nile virus disease—Arizona, 2015. *MMWR Morb Mortal Wkly Rep.* 2015;64:1349–50.
- Brault AC, Fang Y, Reisen WK. Multiplex qRT-PCR for the detection of western equine encephalomyelitis, St. Louis encephalitis, and West Nile viral RNA in mosquito pools (Diptera: Culicidae). *J Med Entomol.* 2015;52:491–9. <http://dx.doi.org/10.1093/jme/tjv021>
- California Department of Public Health, UC Davis Arbovirus Research and Training, Mosquito and Vector Control Association of California. Latest West Nile virus activity in California [cited 2016 Oct 7]. <http://www.westnile.ca.gov>
- Zimmer C. Scientists investigate how viruses like Zika cause birth defects. *New York Times.* 2016 Feb 9. p. D6.
- Taketa-Graham M, Powell Pereira JL, Baylis E, Cossen C, Ocegüera L, Patiris P, et al. High throughput quantitative colorimetric microneutralization assay for the confirmation and differentiation of West Nile virus and St. Louis encephalitis virus. *Am J Trop Med Hyg.* 2010;82:501–4. <http://dx.doi.org/10.4269/ajtmh.2010.09-0297>
- Patiris PJ, Ocegüera LF III, Peck GW, Chiles RE, Reisen WK, Hanson CV. Serologic diagnosis of West Nile and St. Louis encephalitis virus infections in domestic chickens. *Am J Trop Med Hyg.* 2008;78:434–41.
- Monath TPS. *St. Louis encephalitis virus.* Washington (DC): American Public Health Association; 1980.
- Reisen WK, Wheeler SS, Garcia S, Fang Y. Migratory birds and the dispersal of arboviruses in California. *Am J Trop Med Hyg.* 2010;83:808–15. <http://dx.doi.org/10.4269/ajtmh.2010.10-0200>
- Kumar S, Stecher G, Tamura K. MEGA7: Molecular Evolutionary Genetics Analysis version 7.0 for bigger datasets. *Mol Biol Evol.* 2016;33:1870–4. <http://dx.doi.org/10.1093/molbev/msw054>

Address for correspondence: Lark L. Coffey, Davis Arbovirus Research and Training, Center for Vectorborne Diseases, Department of Pathology, Microbiology and Immunology, School of Veterinary Medicine, University of California Davis, 1 Shields Ave, 5327 VM3A, Davis, CA 95616, USA; email: lcoffey@ucdavis.edu