

UC Santa Barbara

UC Santa Barbara Previously Published Works

Title

Signal detectability and boldness are not the same: the function of defensive coloration in nudibranchs is distance-dependent.

Permalink

<https://escholarship.org/uc/item/8fh3z8x4>

Journal

Proceedings of the Royal Society B: Biological Sciences, 290(2003)

Authors

Cheney, Karen
van den Berg, Cedric
Endler, John

Publication Date

2023-07-26

DOI

10.1098/rspb.2023.1160

Peer reviewed



Cite this article: van den Berg CP, Endler JA, Cheney KL. 2023 Signal detectability and boldness are not the same: the function of defensive coloration in nudibranchs is distance-dependent. *Proc. R. Soc. B* **290**: 20231160.
<https://doi.org/10.1098/rspb.2023.1160>

Received: 26 May 2023

Accepted: 28 June 2023

Subject Category:

Ecology

Subject Areas:

behaviour, cognition, ecology

Keywords:

aposematism, crypsis, visual modelling, secondary defences, predator psychology, signalling honesty

Author for correspondence:

Cedric P. van den Berg
 e-mail: c.vandenberg@bristol.ac.uk

[†]Present address: Ecology of Vision Laboratory, School of Biological Sciences, The University of Bristol, Bristol BS81TQ, UK.

Electronic supplementary material is available online at <https://doi.org/10.6084/m9.figshare.c.6730004>.

Signal detectability and boldness are not the same: the function of defensive coloration in nudibranchs is distance-dependent

Cedric P. van den Berg^{1,†}, John A. Endler^{2,3} and Karen L. Cheney¹

¹Marine Sensory Ecology Group, The University of Queensland, School of Biological Sciences, Brisbane, QLD 4072, Australia

²Centre for Integrative Ecology, School of Life and Environmental Sciences, Deakin University, Geelong, Victoria 3216, Australia

³Zoology and Ecology Tropical Environments Sciences, College of Science and Engineering, James Cook University, Smithfield Cairns, QLD 4878, Australia

CPvdB, 0000-0001-6422-7237; JAE, 0000-0002-7557-7627; KLC, 0000-0001-5622-9494

Aposematic signals visually advertise underlying anti-predatory defences in many species. They should be detectable (e.g. contrasting against the background) and bold (e.g. using internal pattern contrast) to enhance predator recognition, learning and memorization. However, the signalling function of aposematic colour patterns may be distance-dependent: signals may be undetectable from a distance to reduce increased attacks from naïve predators but bold when viewed up close. Using quantitative colour pattern analysis, we quantified the chromatic and achromatic detectability and boldness of colour patterns in 13 nudibranch species with variable strength of chemical defences in terms of unpalatability and toxicity, approximating the visual perception of a triggerfish (*Rhinecanthus aculeatus*) across a predation sequence (detection to subjugation). When viewed from an ecologically relevant distance of 30 cm, there were no differences in detectability and boldness between well-defended and undefended species. However, when viewed at closer distances (less than 30 cm), well-defended species were more detectable and bolder than undefended species. As distance increased, detectability decreased more significantly than boldness for defended species. For undefended species, boldness and detectability remained comparatively consistent, regardless of viewing distance. We provide evidence for distance-dependent signalling in aposematic nudibranchs and highlight the importance of distinguishing signal detectability from boldness in studies of aposematism.

1. Introduction

Conspicuous colour patterns displayed by aposematic species educate predators about underlying defences during prey encounters [1,2] or via eavesdropping (e.g. [3]). Aposematic colour patterns should be readily detectable against their visual background, and detectability is crucial to the initial evolution of aposematism [4,5]. Most aposematic signals are also bold, defined as being bright and colourful, which includes exhibiting high internal colour and luminance contrast [6,7] and striking colour pattern geometry [1,2,8,9]. This enhances the formation and maintenance of predator avoidance behaviour [10]. Theoretically, aposematic animal colours and patterns should be most efficient when they are both easily detected and bold [4].

However, it is essential to differentiate between detectability and boldness to understand the appearance of a visual signal in the context of its background and the pattern itself. Evidence for and against the relative contribution of each to signal quality and efficacy is mixed [11,12]. For example, Sillén-Tullberg [13]

demonstrated that chicks (*Gallus gallus domesticus*) learned to avoid coloured artificial prey independent of background contrast. By contrast, Aronsson and Gamberale-Stille [14] failed to find an effect of internal patterning on the strength of avoidance behaviour in chicks. A key benefit of increased detectability in aposematic species may be to reduce predator recognition errors by allowing more time for accurate decision-making [15]. However, Gamberale-Stille *et al.* [16] demonstrated that increased detectability in chickens (*Gallus gallus domesticus*) did not improve the survival of aposematic prey. In fact, if detectable, aposematic species are attacked more frequently by naïve predators or those capable and willing to tolerate secondary defences (e.g. [17,18]). Detectability can therefore be a potential handicap of bold aposematic signals rather than a fitness benefit [4,19–23] and could be under conflicting selection pressures for and against increased levels of conspicuousness.

Aposematic species may benefit from distance-dependent signalling [21,24], which would allow optimal levels of detectability while maintaining high signal boldness. This shift in colour pattern functionality could reduce the detectability of bold colour patterns from a distance while enabling predator deterrence up close. Multiple theoretical and empirical studies support this principle (e.g. [25–31]). For example, Barnett & Cuthill [22] demonstrated that, when searched for by human observers, camouflaged stimuli with boldly contrasting markings were detected at the same distance compared to camouflaged stimuli without bold markings. This combination of colour pattern boldness and camouflage was later confirmed using artificial stimuli and avian predators [32–34].

Distance-dependent signalling can be investigated by considering the visual perception of a signal in its ecological context, including the spatial acuity of a visual system and the distance from which it is observed [21,35,36]. As viewing distances increase, the perception of higher spatial frequencies in visual backgrounds and animal colour patterns is lost. Smaller-scale colour pattern elements blur together, leading to the additive blending of colour pattern elements [37]. How, and if, such blending happens is influenced by the size, shape and colour of individual colour pattern elements [38]. As a result, individual or multiple colour pattern design elements can be subject to single or multiple selective pressures depending on the contextual relevance of their perception [39,40]. Therefore, despite being influenced by the loss of spatial detail as viewing distances increase, colour pattern boldness and detectability in aposematic animals may not be subject to equal selective pressures at varying viewing distances (e.g. [34]).

In the predator sequence, prey detection precedes prey identification and subsequent decisions by predators to further engage with prey [41,42]. Therefore, context-specific signal processing is used by predators as they proceed from detection to discrimination and subsequent attack [12,39,43]. The relative importance of primary and secondary defences likely shifts along such a predation sequence (see [44] for review). For example, visual defences relying on the avoidance of detection precede bold deimatic displays by threatened prey warning a predator of underlying secondary defences (see [44,45] for reviews). However, it is unknown how detectability and boldness change along an escalating predation sequence in the context of permanently displayed warning signals. Few studies have differentiated between the detectability and boldness of aposematic animals (but see [46]) and done so at different viewing distances while considering the

physiological limitations of ecologically relevant observers (but see [26]). This is partly due to the challenge of capturing spatiochromatic properties of complex visual backgrounds according to observer-specific physiological limitations, such as spatial acuity and chromatic/achromatic contrast perception under natural illumination.

In this study, we investigated the detectability and boldness of defensive animal coloration in 13 species of nudibranch molluscs with differing chemical defences (figure 1). Nudibranch molluscs display a stunning diversity of defensive coloration and secondary defences, and are a valuable model system in the study of the ecology and evolution of aposematic signals [46–49]. We used quantitative colour pattern analysis (QCPA) [50] and considered the distance from which nudibranchs would be perceived by an ecologically relevant observer, a triggerfish (*Rhinecanthus aculeatus*). We hypothesized that when viewed from larger distances, the detectability of nudibranchs against their backgrounds should be low for all species, irrespective of their bold colour patterns or the strength of chemical defences. However, when viewed up close, we hypothesized that species with strong chemical defences would show significantly greater visual contrasts against their backgrounds than undefended species. Lastly, we expected an unequal change in the relationship of boldness and detectability between chemically defended and undefended species across different viewing distances.

2. Material and methods

(a) Image collection

We took calibrated digital images of 13 Dorid nudibranch species ($n = 226$ individuals): *Aphelodoris varia* ($n = 24$), *Chromodoris elisabethina* ($n = 21$), *Chromodoris kuiteri* ($n = 17$), *Discodoris* sp. ($n = 15$), *Doriprismatica atromarginata* ($n = 27$), *Glossodoris vespa* ($n = 15$), *Goniobranchus collingwoodi* ($n = 15$), *Goniobranchus splendidus* ($n = 25$), *Hypselodoris bennetti* ($n = 10$), *Phyllidia elegans* ($n = 8$), *Phyllidia ocellata* ($n = 23$), *Phyllidia varicosa* ($n = 8$) and *Phyllidiella pustulosa* ($n = 18$). Species were visually identified using various taxonomic books [51–53]. We grouped individuals that visually resembled *Sebadoris fragilis* and were found in the same locations as *Discodoris* sp.; however, these individuals could be a mixture of *Sebadoris fragilis*, *Thayuva lilacina*, *Jorunna pantheris* and perhaps other undescribed species that cannot be identified without molecular sequencing.

Fieldwork was conducted on SCUBA between October 2017 and July 2021 at dive sites along the east coast of Australia: Sunshine Coast (SE Queensland), Gold Coast (SE Queensland) and Nelson Bay (New South Wales). Individual nudibranchs were located and photographed underwater at depths of 2–18 m against their natural habitat using a calibrated digital Olympus EPL-5 with a 60 mm macro lens in an Olympus PT-EP10 underwater housing. We used white LED illumination from a combination of VK6r and PV62 Scubalamp video lights for illumination (as per [50]). All images were taken at roughly a 90° angle (top-down) relative to the animal and its background, with the animals in a naturally stretched-out, straight, forward-moving position (figure 1). All pictures were taken with a colour and size standard placed next to the animal (see the Supplement of [47]). As the images were taken with a prime lens, the distance from which photographs were taken varied as a function of nudibranch size: larger animals were photographed from further away (approx. 60 cm) compared to smaller ones (approx. 30 cm). At such close distances, scattering by water was assumed to be negligible and thus did not impact image analysis.

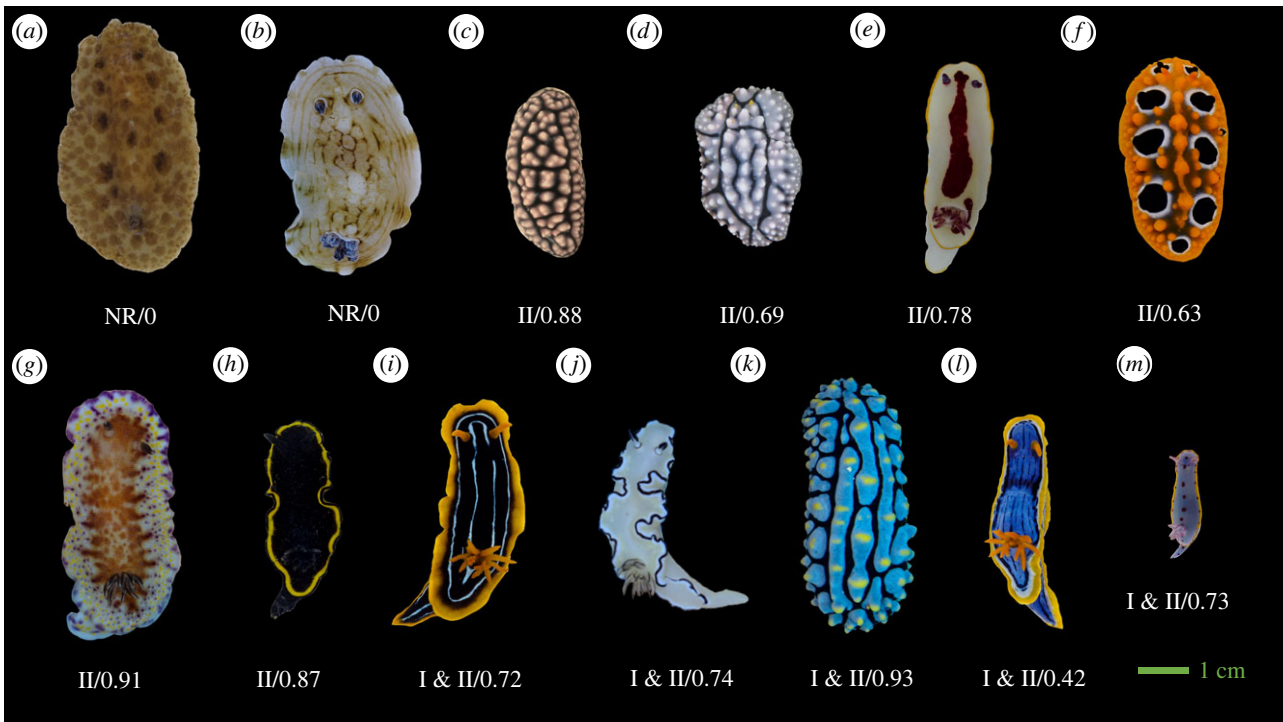


Figure 1. Representative images of species used in this study grouped by their chemical defences (scaled approximately according to size): (a) *Discodoris* sp.; (b) *Aphelodoris varia*; (c) *Phyllidiella pustulosa*; (d) *Phyllidia elegans*; (e) *Goniobranchus splendidus*; (f) *Phyllidia ocellata*; (g) *Goniobranchus collingwoodi*; (h) *Glossodoris vespa*; (i) *Chromodoris kuiteri*; (j) *Doriprismatica atromarginata*; (k) *Phyllidia varicosa*; (l) *Chromodoris elisabethina*; (m) *Hypselodoris bennetti*. The level of chemical defence is provided as values below each image determined from toxicity and unpalatability assays in Winters *et al.* [49,56]. The first value indicates the class of chemical defence: 'NR' indicates no response in assays and therefore nudibranch species that have limited or no chemical defences; class 'II' indicates highly unpalatable but weakly toxic species; and class 'I & II' indicates species that are highly unpalatable and highly toxic. The second value is ED_{50} data from unpalatability feeding assays with *Palaemon* shrimp. ED_{50} refers to the median effective dose at which 50% of pellets are rejected, presented here as $1 - ED_{50}$ values normalized to range from 0–1, where 1 indicates the least palatable species.

(b) Aposematism and chemical defences

We quantified chemical defences using previously published measures of toxicity (causing injury and harm) and deterrence (unpalatability) [48]. These measures of defence are only sometimes correlated [49,54,55] and thus should be disentangled in the aposematism literature. First, we used both measures of toxicity and unpalatability using the classification from [49]. Species belonged to the following three classes: no response 'NR', nudibranch species that have limited or no chemical defences; 'Class II', species that are only weakly toxic but highly unpalatable; 'Class I & II', highly toxic and highly unpalatable. *Glossodoris vespa* was classified as Class II from assay data reported in [56]. In [56], only one species belonged to Class I (highly toxic and weakly unpalatable) and we did not have sufficient colour pattern data for this species. Our second measure was unpalatability alone. Here, we ranked our study species from 0 to 1, according to the average ED_{50} (Effective Dose, 50%) response in *Palaemon* shrimp feeding assays reported in [49,56], calculated as $1 - ED_{50}$ and normalized so that 1 represented the most unpalatable species (figure 1).

Except for *Discodoris* sp. and *Aphelodoris varia*, we consider these species to be aposematic as they harbour potent chemical defences and display bold colour signals ([49,56], figure 1). *Aphelodoris varia* has no known chemical defences [49] and likely relies on crypsis via background matching for their primary defence. *Sebadoris fragilis* has no known chemical defences [49] and we therefore classified *Discodoris* sp. as non-toxic and palatable.

(c) Quantification of detectability and boldness

Image analysis was conducted with visual modelling parameter choices as per [38] at the following viewing distances: 2 cm, 5 cm, 10 cm and 30 cm. At distances beyond 30 cm, the majority of small nudibranchs and much of the internal patterning in

larger individuals are unlikely to be visible to a triggerfish (*R. aculeatus*) due to its spatial acuity of about three cycles per degree (cpd) [57].

To quantify detectability (i.e. a measure of background matching), we calculated the absolute difference of the abundance-weighted coefficient of variation of achromatic ($Lum.CoV$) and chromatic ($Col.CoV$) local edge contrast (LEIA, measured in ΔS) for each animal relative to that of its respective visual background. Thus, by considering the difference in the overall appearance of an animal by itself relative to its immediate background, we specifically quantify background matching. The coefficient of variation of chromatic and achromatic boundary contrast between colour pattern elements has previously been shown to indicate mate choices in guppies (*Poecilia reticulata*) [58,59]. Instead of using the boundary strength analysis (BSA) [60], we make use of the non-parametric approach of LEIA and its ability to consider colour pattern contrast at roughly the scale of an edge-detecting receptive field of a triggerfish [61]. Unlike BSA, LEIA does not rely on image segmentation. After applying Gaussian acuity modelling, we use receptor noise limited (RNL) ranked filtering [50] with settings chosen as per [38].

The RNL model [62] allows us to estimate the perceived colour and luminance contrast of non-human observers and, in addition to RNL ranked filtering, is used to describe the contrast of edges within each animal and its corresponding natural background. This contrast measure is expressed as ΔS and reflects the distance between two contrasting points in the RNL colour space [63]. We used the mean LEIA contrast across the vertical, horizontal and diagonal filter axis to describe the colour and luminance contrast at each location in the image. For a detailed description of LEIA parameters, see [50].

To quantify boldness, we used $Lum.CoV$ and $Col.CoV$ of each animal without considering their respective visual backgrounds,

as we define the boldness of an aposematic signal as the strength of the signal once prey detection has taken place. High values for each pattern statistic indicate the presence of highly contrasting colour pattern elements, whereas low values indicate a pattern with no or weakly contrasting colour pattern elements.

(d) Statistical analysis

All colour pattern statistics were normalized to range from 0 to 1 using the 'range' argument of the `PreProcess` function (caret package, [64], v. 6.0-90) using R Software ([65], v. 4.1.2). When we considered differences between species without considering the class of their chemical defences, detectability and boldness data did not meet the assumptions of normality due to large variation in the number of individuals and individual trait data, so we used a Kruskal-Wallis test [66]. This analysis was performed using the `stats` package and *post hoc* analyses comparing individuals was done using Dunn tests [67] with a Bonferroni correction [68] in the `FSA` package ([69], v. 0.9.3).

When considering differences between species with their class of chemical defence at different viewing distances, we applied a linear mixed effect (lme) model using the `lme4` ([70], v. 1.1-28) and `lmerTest` ([71], v. 3.1-3) packages and type III ANOVA tables using Satterwaite's method in the `stats` package after applying a square-root transform to the left-skewed data. The meeting of assumptions was assessed for each model fit. We further ran independent lme models for chemical defence and viewing distance. Species was treated as a random effect for all lme models.

To determine the relationship between unpalatability data and colour pattern statistics, we used a Pearson product-moment correlation (R) in the `stats` package ([65], v. 4.1.2). Detectability and boldness were measured as the median species value of *Lum.CoV* and *Col.CoV* at each viewing distance. For this analysis, we applied an ordered quantile normalization to the raw data using the `bestNormalize` package ([72], v. 1.8.2) to ensure normality throughout the dataset. The distance-dependent change in the correlation between unpalatability and visual defences was then assessed by fitting linear regressions to the obtained Pearson product-moment correlations.

3. Results

(a) Detectability

We first considered differences in detectability between species (i.e. the difference between each animal and its background) at different distances without considering chemical defences. We found significant differences in achromatic detectability (*Lum.CoV*) among species at all viewing distances (Kruskal-Wallis 2 cm: $\chi^2_{(12)} = 126.35$, $p < 0.001$; 5 cm: $\chi^2_{(12)} = 111.44$, $p < 0.001$; 10 cm: $\chi^2_{(12)} = 75.389$, $p < 0.001$; 30 cm: $\chi^2_{(12)} = 24.94$, $p = 0.015$). However, only one species remained significantly more detectable than others at 30 cm, with *H. bennetti* being more detectable than *G. vespa* (Dunn test: $p_{\text{adj}} = 0.021$, electronic supplementary material, table S1). Similarly, there were significant differences in chromatic detectability among species at close viewing distances (Kruskal-Wallis 2 cm: $\chi^2_{(12)} = 95.23$, $p < 0.001$; 5 cm: $\chi^2_{(12)} = 97.69$, $p < 0.001$; 10 cm: $\chi^2_{(12)} = 76.81$, $p < 0.001$) but not at 30 cm (Kruskal-Wallis: $\chi^2_{(12)} = 16.62$, $p = 0.164$, electronic supplementary material, table S2).

When considering the class of chemical defence, species without chemical defences (NR) had higher achromatic detectability (*Lum.CoV*) at larger viewing distances (30 cm) than up close (less than 30 cm; $F_{4,189} = 6.27$, $p < 0.001$). By

contrast, chemically defended species were less detectable when viewed from a distance, with the most defended species (Class I and II) displaying the largest differences between viewing distances (weakly toxic/highly unpalatable (Class II): $F_{4,510} = 12.31$, $p < 0.001$; highly toxic/highly unpalatable (Class I & II): $F_{4,406} = 31.38$, $p < 0.001$; figure 2a).

For species without chemical defences (NR), there was no difference in chromatic detectability (*Col.CoV*) among viewing distances ($F_{4,190} = 0.50$, $p = 0.734$). By contrast, chemically defended species showed a significant reduction in chromatic detectability with increased viewing distances, and again this was most pronounced in the most defended species (weakly toxic/highly unpalatable (Class II): $F_{4,510} = 12.24$, $p < 0.001$; highly toxic/highly unpalatable (Class I & II): $F_{4,509.98} = 16.13$, $p < 0.001$; figure 2b).

There was no significant difference in achromatic or chromatic detectability among chemical defence groups at viewing distances of 5, 10 or 30 cm (achromatic detectability [*Lum.CoV*]: 5 cm, $F_{2,9.94} = 2.07$, $p = 0.178$; 10 cm, $F_{2,10.17} = 0.27$, $p = 0.771$; 30 cm, $F_{2,8.58} = 0.07$, $p = 0.937$; chromatic detectability [*Col.CoV*]: 2 cm, $F_{2,9.82} = 1.09$, $p = 0.374$; 5 cm, $F_{2,9.88} = 1.03$, $p = 0.391$; 10 cm, $F_{2,9.95} = 0.75$, $p = 0.498$; 30 cm: $F_{2,8.68} = 0.22$, $p = 0.807$). However, at 2 cm, achromatic detectability of highly defended species (Class I & II) were more detectable than species without chemical defences (Class NR) or unpalatable ones (Class II; $F_{2,9.8} = 4.26$, $p = 0.047$).

When considering chemical defences on a continuous scale using unpalatability data, there was a weak positive relationship between unpalatability and both achromatic ($R = 0.18$ – 0.28) and chromatic detectability ($R = 0.18$ – 0.22) at close viewing distances (2 cm–10 cm). By contrast, no or weakly negative relationships ($R = -0.077$ – -0.18) were observed at larger viewing distances (30 cm, figure 3a). Both achromatic ($r^2 = 0.98$, $F_{1,2} = 117.7$, $p = 0.008$) and chromatic ($r^2 = 0.98$, $F_{1,2} = 110$, $p = 0.009$) detectability showed a significant reduction in their relationship with unpalatability over increasing viewing distances (figure 3b).

(b) Boldness

When we considered differences in boldness (i.e. analysing each animal without its background) without considering chemical defences, we found significant differences in achromatic boldness among species at all viewing distances (Kruskal-Wallis 2 cm: $\chi^2_{(12)} = 159.94$, $p < 0.001$; 5 cm: $\chi^2_{(12)} = 161.11$, $p < 0.001$; 10 cm: $\chi^2_{(12)} = 148.26$, $p < 0.001$; 30 cm: $\chi^2_{(12)} = 74.27$, $p < 0.001$). At 30 cm, significant differences between multiple species remained (figure 2c; electronic supplementary material, table S3). Similarly, there were significant differences in chromatic boldness among species across all viewing distances (Kruskal-Wallis 2 cm: $\chi^2_{(12)} = 165.46$, $p < 0.001$; 5 cm: $\chi^2_{(12)} = 163.55$, $p < 0.001$; 10 cm: $\chi^2_{(12)} = 147.8$, $p < 0.001$, 30 cm: $\chi^2_{(12)} = 88.89$, $p < 0.001$; electronic supplementary material, table S4).

When considering the class of chemical defence, species with and without chemical defences showed decreased achromatic boldness at larger viewing distances, with highly defended species displaying the largest differences between distances (undefended (Class NR): $F_{4,189} = 38.34$, $p < 0.001$; weakly toxic/highly unpalatable (Class II): $F_{4,510.05} = 244.74$, $p < 0.001$; highly toxic/highly unpalatable (Class I & II): $F_{4,406} = 324.83$, $p < 0.001$; figure 2).

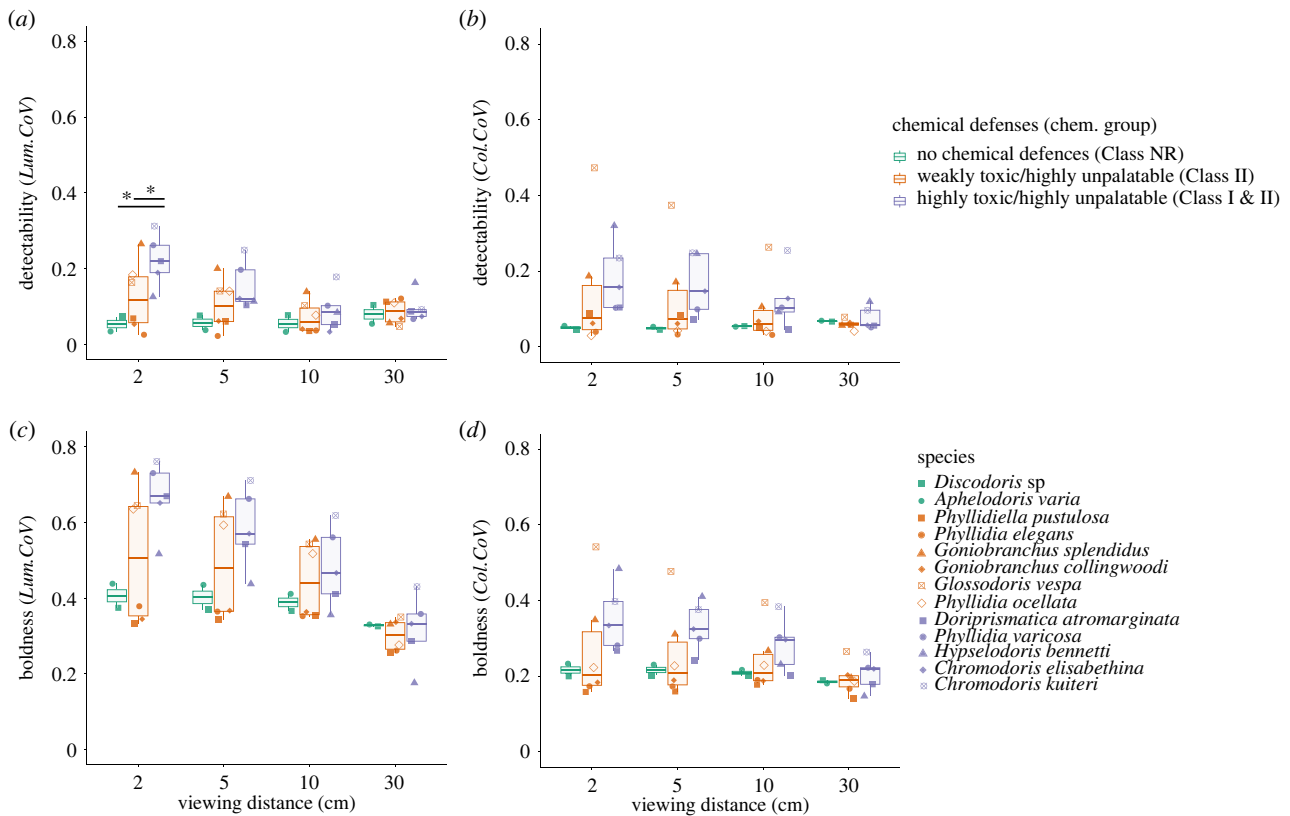


Figure 2. Relative detectability and boldness of 13 dorid nudibranch species. The strength of chemical defences is indicated by colours relative to the class of chemical defence. (a) Species median detectability quantified as the abundance-weighted coefficient of variation of achromatic local edge contrast (*Lum.CoV*) measured relative to the natural background of every individual. (b) Species median detectability quantified as the abundance-weighted coefficient of variation of chromatic local edge contrast (*Col.CoV*) measured relative to the natural background of every individual. (c) Species median achromatic pattern boldness measured as the abundance weighted coefficient of variation of each animal's achromatic local edge contrast (*Lum.CoV*). (d) Species median chromatic pattern boldness measured as the abundance-weighted coefficient of variation of each animal's chromatic local edge contrast (*Col.CoV*).

Similarly, species with and without chemical defences showed decreased chromatic boldness at larger viewing distances, with highly defended species displaying the largest differences between distances (undefended (Class NR): $F_{4,189} = 6.27$, $p < 0.001$; weakly toxic/highly unpalatable (Class II): $F_{4,510} = 12.31$, $p < 0.001$; highly toxic/highly unpalatable (Class I & II): $F_{4,406} = 31.38$, $p < 0.001$; figure 2d).

There were no significant differences in either achromatic (*Lum.CoV*, 2 cm: $F_{2,9.95} = 2.43$, $p = 0.139$, 5 cm: $F_{2,9.92} = 1.33$, $p = 0.309$, 10 cm: $F_{2,9.87} = 0.34$, $p = 0.721$, 30 cm: $F_{2,9.48} = 0.19$, $p = 0.828$) or chromatic boldness (*Col.CoV*, 2 cm: $F_{2,9.95} = 1.08$, $p = 0.375$, 5 cm: $F_{2,9.97} = 1.28$, $p = 0.320$, 10 cm: $F_{2,9.80} = 0.70$, $p = 0.519$, 30 cm: $F_{2,9.77} = 0.05$, $p = 0.947$) between chemical defence groups at either viewing distance.

When considering chemical defences on a continuous scale using unpalatability data, both achromatic ($R = 0.06$ – 0.20) and chromatic boldness ($R = 0.11$ – 0.15) showed a weak positive relationship with unpalatability at all distances (2 cm–30 cm, figure 3a). However, neither achromatic ($r^2 = 0.84$, $F_{1,2} = 10.38$, $p = 0.084$) nor chromatic ($r^2 = 0.19$, $F_{1,2} = 0.48$, $p = 0.560$) boldness showed a significant reduction in their relationship with unpalatability over increasing viewing distances (figure 3b).

4. Discussion

Our study demonstrates that the appearance of nudibranch colour patterns, both in the context of natural backgrounds

(detectability) or the colour pattern alone (boldness), depends on the distance from which an animal is viewed. For highly defended nudibranchs, both achromatic and chromatic detectability and boldness significantly reduced as viewing distance increased. By contrast, the detectability and boldness of apparently undefended species remained relatively consistent over viewing distances. Our results support predictions [21,24] and empirical findings [e.g. 22] suggesting that colour patterns with bold markings can be camouflaged at a distance, at a similar level to camouflaged species using background matching.

We first considered animal appearance across viewing distances, irrespective of underlying chemical defences. We found significant differences in chromatic and achromatic detectability between species at 2–10 cm, but little variation between species at 30 cm. However, for achromatic and chromatic boldness, significant differences remained among species at 30 cm. This indicates that some species, including those that are well-defended, may appear bold at larger viewing distances where the likelihood of detection is reduced but still possible. Using animals observed in their natural habitat, our findings support the idea that detectability and signalling function of defensive coloration can be differentially influenced by viewing distance, and that a reduction in detectability does not necessarily mean a reduction in signal quality [31,34].

We then investigated the detectability and boldness of species considering the strength of underlying chemical defences. Aposematic species should balance the costs and

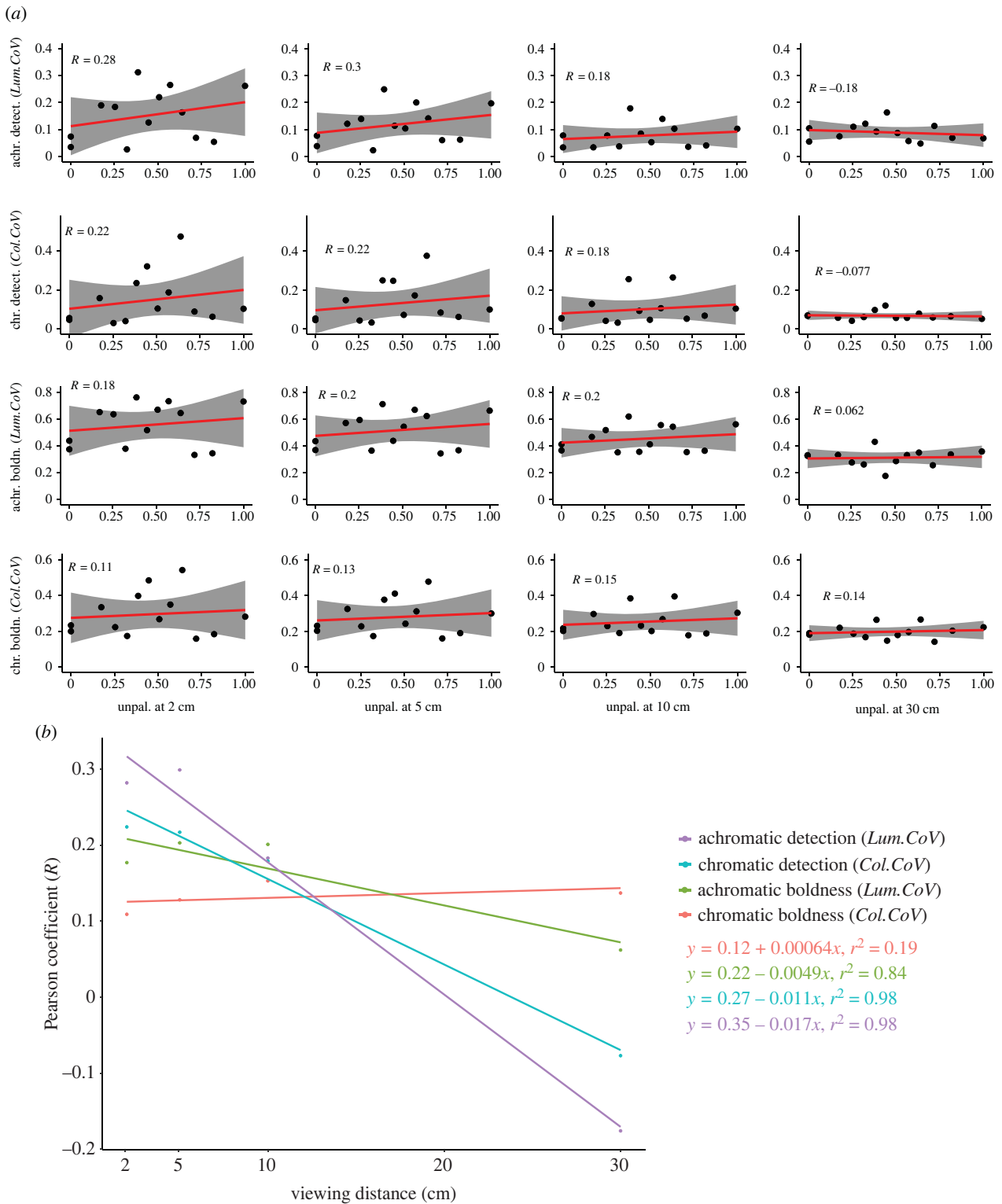


Figure 3. Summary of the correlation of the median chromatic (chr., *Col.CoV*) and achromatic (achr., *Lum.CoV*) boldness (boldn.) and detectability (detect.) of each species with the normalized strength of chemical defences ($1 - ED_{50}$) across different viewing distances. (a) Individual Pearson product–moment correlations (R) for each viewing distance and colour pattern statistic. Grey shading shows 95% confidence intervals; (b) Linear regressions fitted to the Pearson product–moment correlations (R) show variable distance-dependent decreases in the correlation between colour pattern statistics.

benefits of increased detectability induced by bold coloration [21,31,34]. Indeed, increased detectability and boldness at close viewing distances should enhance aposematic signals; however, aposematic species may likely benefit from being camouflaged at a distance [21,24]. Using our categorical measures of chemical defences, we found that species that were both toxic and unpalatable were more detectable at close viewing distances compared to unpalatable (but non-toxic) species or those lacking chemical defences

(figure 2a). At 30 cm, we did not find significant differences in detectability between species with or without chemical defences (figure 2), which supports the assumption that both aposematic and cryptic species may profit from being camouflaged at larger viewing distances. Interestingly, detectability for undefended species was slightly greater at 30 cm compared to smaller distances (figure 2). This is likely due to the non-uniform differential blending of colours and patterns within the animals and their respective

backgrounds, leading to a decrease in background matching at larger viewing distances. For boldness, variations in chromatic and achromatic measures were present between defended and undefended species (figure 2; electronic supplementary material, table S3 and S4); however, these differences were insignificant.

When considering chemical defences on a continuous scale (unpalatability), our results demonstrated that there was a sharper decline in detectability compared to boldness in chemically defended nudibranchs as viewing distance increased (figure 3). This finding aligns with predictions from the literature [31,34]. Specifically, both chromatic and achromatic detectability significantly decreased in unpalatable species. We did not observe a significant decrease in either chromatic or achromatic boldness in unpalatable species. Interestingly, highly unpalatable species are no longer more detectable than undefended species at around 10 cm (figure 3). At this distance, many of the more intricate colour pattern details are no longer visible to triggerfish, possibly making many animals more similar in appearance. Such distance-dependent effects on the perception of colour patterns could be crucial in the ecology and evolution of mimicry systems [73]. For example, the bold, outline-enhancing yellow rims displayed by some species in this study will likely be more detectable at a distance than the finer internal patterning. The loss of fine spatiochromatic detail at a distance could explain the presence and constancy of such outline-enhancing yellow rims [9] found on many aposematic nudibranch species and their putative mimics [40]. Indeed, the inability of ecologically relevant observers to resolve finer detail in animal coloration has been suggested to contribute to the evolution of imperfect mimicry (e.g. [73]).

Perceptual mechanisms underlying prey detection, identification and assessment are complex and remain insufficiently quantified in studies of visual ecology [38,44,50,74]. In this study, we quantified detectability and boldness using a pre-determined selection of image statistics based on existing literature, as per other studies in the field of visual ecology (e.g. [75,76]), rather than considering the entire colour pattern space available in QCPA. To further guide parameter choices, we must identify relevant visual features and modelling parameters in different behavioural contexts in future studies [38,74]. Furthermore, our study looks at relative differences of a specific colour pattern metric in a normalized dataset. As with most (if not all) colour pattern descriptors in the literature, we have yet to learn how absolute differences in these metrics relate to actual biological effect size for this particular context beyond literature-based assumptions (see [38,50,77] for discussion).

Furthermore, animal coloration and, therefore, colour patterns often serve more than just one function, thus often making them complex phenotypes resulting from the interplay of various selective forces (see [1,50,78,79] for discussion). In addition to neutral selection, this includes adaptive purposes of visual signalling other than for defence against visual predators, such as territorial and sexual signalling (e.g. [80]). It also includes purposes unrelated to vision, such as thermoregulation (e.g. [81,82]), and physical properties of pigmentation, such as abrasion resistance and pathogen defence (see [79] for discussion). This cumulative add-mixture of potential selective pressures acting on observed phenotypes makes it challenging to pinpoint causal relationships underlying the ecology and evolution of defensive animal coloration in even the best-understood

animal systems used to study aposematic coloration. Nudibranch molluscs are particularly interesting as their diversity in visual defences is likely less confounded by various selective pressures. Most importantly, nudibranchs are aquatic hermaphrodites and lack visual abilities beyond mere phototaxis [83]. Therefore, nudibranchs provide a highly informative system for observing broadly generalizable causal relationships between prey morphology and visual predation, including those presented in this study.

Notably, our results show that the definition and quantification of primary and secondary defences influence the strength of correlations found between them (figures 2 and 3). For example, when considering unpalatability on a continuous scale, we found that the correlation between detectability and the strength of chemical defences decreases significantly with increasing viewing distances, whereas this does not happen for boldness (figure 3). However, when looking at chemical defences defined as categories, we find significant decreases in boldness for chemically defended species with increasing viewing distances (figure 2). Furthermore, when considering categories of chemical defences, the effect size for the decrease in achromatic boldness with increasing viewing distance is much larger than that for the decrease in chromatic boldness, highlighting the importance of considering multiple measures of colour pattern appearance.

It is essential to acknowledge that the quantification of colour patterns according to animal vision is constantly advancing (see [50] for discussion). Therefore, how colour pattern detectability and boldness are considered in our study is guided by modelling choices on colour, luminance, spatial and spatiochromatic contrast perception according to a specific selection of methods and literature. However, independently of how physiologically defined sensory limitations of ecologically relevant observers are considered, they remain relevant for all visually guided animal behaviour. For example, the blurring and fusion of spatiochromatic information with increasing viewing distances will occur for all species in all habitats due to physical optics [38,50,84]. Thus, the importance of distinguishing between signal detectability and signal boldness in any predator-prey system is not guided by the intricacies of how their characterization is achieved but simply by acknowledging the possibility of considering them as distinct perceptual properties.

In summary, our findings highlight that when investigating aposematic signals, it is important to distinguish between signal detectability and boldness in the context of ecologically relevant viewing distances, and the term 'conspicuousness' should therefore be well-defined. We suggest that many aposematic nudibranchs are cryptic when viewed at larger viewing distances, and levels of detectability are similar to undefended species that use background matching. However, differential, distance-dependent selection on detectability and colour pattern boldness likely also applies to other forms of visual signalling in prey animals, such as sexual or territorial signalling, suggesting a significant area of investigation for future studies.

Data accessibility. The data are available on UQ e space: <https://doi.org/10.48610/03c56dd> [85] and in the electronic supplementary material [86].

Authors' contributions. C.P.vdB.: conceptualization, data curation, formal analysis, funding acquisition, investigation, methodology, project administration, resources, software, validation, visualization, writing—original draft, writing—review and editing; J.A.E.: validation,

writing—review and editing; K.L.C.: funding acquisition, project administration, resources, supervision, validation, writing—review and editing.

All authors gave final approval for publication and agreed to be held accountable for the work performed therein.

Conflict of interest declaration. We declare we have no competing interests.

Funding. This work was supported by the Australian Research Council (grant numbers FT190199313, DP180102363), the Holsworth Wildlife

Research Endowment (awarded to CPvdB) and the Australasian Society for the Study of Animal Behaviour (awarded to CPvdB).

Acknowledgements. We thank Dr Nicholas Condon for his assistance with creating automated QCPA scripts and various volunteers for assistance with image analysis and fieldwork. We also thank the staff running the High-Performance Computing infrastructure at The University of Queensland (Wiener & Awoonga) and Dr Simone Blomberg, who provided infrastructure that contributed to the computing of image statistics.

References

- Cott HB. 1940 Animal coloration and natural selection. *Nature* **146**, 144–145. (doi:10.1038/146144a0)
- Poulton EB. 1890 *The colours of animals, their meaning and use, especially considered in the case of insects*, 2nd edn. London, UK: Kegan Paul, Trench, Trubner.
- Hämäläinen L, Hoppitt W, Rowland HM, Mappes J, Fulford AJ, Sosa S, Thorogood R. 2021 Social transmission in the wild can reduce predation pressure on novel prey signals. *Nat. Commun.* **12**, 1–11. (doi:10.1038/s41467-021-24154-0)
- Endler JA, Mappes J. 2004 Predator mixes and the conspicuousness of aposematic signals. *Am. Nat.* **163**, 532–547. (doi:10.1086/382662)
- Gittleman JL, Harvey PH. 1980 Why are distasteful prey not cryptic? *Nature* **286**, 149–150. (doi:10.1038/286149a0)
- Cook SE, Roper TJ. 1989 Responses of chicks to brightly coloured insect prey. *Behaviour* **110**, 276–293. (doi:10.1163/156853989X00510)
- Prudic KL, Skemp AK, Papaj DR. 2007 Aposematic coloration, luminance contrast, and the benefits of conspicuousness. *Behav. Ecol.* **18**, 41–46. (doi:10.1093/beheco/arl046)
- Kenward B, Wachtmeister CA, Ghirlanda S, Enquist M. 2004 Spots and stripes: the evolution of repetition in visual signal form. *J. Theor. Biol.* **230**, 407–419. (doi:10.1016/j.jtbi.2004.06.008)
- Green NF, Urquhart HH, van den Berg CP, Marshall NJ, Cheney KL. 2018 Pattern edges improve predator learning of aposematic signals. *Behav. Ecol.* **29**, 1481–1486. (doi:10.1093/beheco/ary089)
- Speed M. 2000 Warning signals, receiver psychology and predator memory. *Anim. Behav.* **60**, 269–278. (doi:10.1006/anbe.2000.1430)
- Rowe C. 2013 Receiver psychology: a receiver's perspective. *Anim. Behav.* **85**, 517–523. (doi:10.1016/j.anbehav.2013.01.004)
- Guilford T, Dawkins MS. 1993 Receiver psychology and the design of animal signals. *Trends Neurosci.* **16**, 430–436. (doi:10.1016/S0003-3472(05)80600-1)
- Sillén-Tullberg B. 1985 The significance of coloration per se, independent of background, for predator avoidance of aposematic prey. *Anim. Behav.* **33**, 1382–1384. (doi:10.1016/S0003-3472(85)80211-6)
- Aronsson M, Gamberale-Stille G. 2009 Importance of internal pattern contrast and contrast against the background in aposematic signals. *Behav. Ecol.* **20**, 1356–1362. (doi:10.1093/beheco/arp141)
- Guilford T. 1986 How do 'warning colours' work? Conspicuousness may reduce recognition errors in experienced predators. *Anim. Behav.* **34**, 286–288. (doi:10.1016/0003-3472(86)90034-5)
- Gamberale-Stille G, Bragée C, Tullberg BS. 2009 Higher survival of aposematic prey in close encounters with predators: an experimental study of detection distance. *Anim. Behav.* **78**, 111–116. (doi:10.1016/j.anbehav.2009.04.015)
- Sherratt TN, Speed MP, Ruxton GD. 2004 Natural selection on unpalatable species imposed by state-dependent foraging behaviour. *J. Theor. Biol.* **228**, 217–226. (doi:10.1016/j.jtbi.2003.12.009)
- Aubier TG, Sherratt TN. 2020 State-dependent decision-making by predators and its consequences for mimicry. *Am. Nat.* **196**, E127–E144. (doi:10.1086/710568)
- Sherratt TN. 2002 The coevolution of warning signals. *Proc. R. Soc. B* **269**, 741–746. (doi:10.1098/rspb.2001.1944)
- Barnett CA, Skelhorn J, Bateson M, Rowe C. 2012 Educated predators make strategic decisions to eat defended prey according to their toxin content. *Behav. Ecol.* **23**, 418–424. (doi:10.1093/beheco/arr206)
- Endler JA. 1978 A predator's view of animal color patterns. *Evol. Biol.* **11**, 320–364. (doi:10.1007/978-1-4615-6956-5_5)
- Barnett JB, Cuthill IC. 2015 Distance-dependent defensive coloration. *Curr. Biol.* **24**, R1157–R1158. (doi:10.1016/j.cub.2014.11.015)
- Speed MP, Ruxton GD. 2007 How bright and how nasty: explaining diversity in warning signal strength. *Evolution* **61**, 623–635. (doi:10.1111/j.1558-5646.2007.00054.x)
- Rothschild M. 1964 A note on the evolution of defensive and repellent odours of insects. *Entomol.* **97**, 276–280.
- Barnett JB, Cuthill IC, Scott-Samuel NE. 2018 Distance-dependent aposematism and camouflage in the cinnabar moth caterpillar (*Tyria jacobaeae*, Erebididae). *R. Soc. Open Sci.* **5**, 171396. (doi:10.1098/rsos.171396)
- Barnett JB, Michalis C, Scott-Samuel NE, Cuthill IC. 2018 Distance-dependent defensive coloration in the poison frog *Dendrobates tinctorius*, Dendrobatidae. *Proc. Natl Acad. Sci. USA* **115**, 201800826. (doi:10.1073/pnas.1800826115)
- Honma A, Mappes J, Valkonen JK. 2015 Warning coloration can be disruptive: aposematic marginal wing patterning in the wood tiger moth. *Ecol. Evol.* **5**, 4863–4874. (doi:10.1002/ece3.1736)
- Marples NM, Kelly DJ, Thomas RJ. 2005 The evolution of warning coloration is not paradoxical. *Evolution* **59**, 933–940. (doi:10.1111/j.0014-3820.2005.tb01032.x)
- Sherratt TN, Beatty CD. 2003 The evolution of warning signals as reliable indicators of prey defense. *Am. Nat.* **162**, 377–389. (doi:10.1086/378047)
- Caro T, Stankowich T, Kiffner C, Hunter J. 2013 Are spotted skunks conspicuous or cryptic? *Ethol. Ecol. Evol.* **25**, 144–160. (doi:10.1080/03949370.2012.744359)
- Tullberg BS, Merilaita S, Wiklund C. 2005 Aposematism and crypsis combined as a result of distance dependence: functional versatility of the colour pattern in the swallowtail butterfly larva. *Proc. R. Soc. B* **272**, 1315–1321. (doi:10.1098/rspb.2005.3079)
- Barnett JB, Scott-Samuel NE, Cuthill IC. 2016 Aposematism: balancing salience and camouflage. *Biol. Lett.* **12**, 20160335. (doi:10.1098/rsbl.2016.0335)
- Barnett JB *et al.* 2016 Stripes for warning and stripes for hiding: spatial frequency and detection distance. *Behav. Ecol.* **28**, 373–381. (doi:10.1093/beheco/arw168)
- Barnett JB, Cuthill IC, Scott-Samuel NE. 2017 Distance-dependent pattern blending can camouflage salient aposematic signals. *Proc. R. Soc. B* **284**, 20170128. (doi:10.1098/rspb.2017.0128)
- Campbell FW, Green DG. 1965 Optical and retinal factors affecting visual resolution. *J. Physiol.* **181**, 576–593. (doi:10.1113/jphysiol.1965.sp007784)
- Mottram JC. 1915 Some observations on pattern-blending with reference to obliterative shading and concealment of outline. *Proc. Zool. Soc. Lond.* **85**, 679–692. (doi:10.1111/j.1469-7998.1915.00679.x)
- Marshall NJ. 2000 Communication and camouflage with the same 'bright' colours in reef fishes. *Phil. Trans. R. Soc. B* **355**, 1243–1248. (doi:10.1098/rstb.2000.0676)
- van den Berg CP, Endler JA, Papinczak DEJ, Cheney KL. 2022 Using colour pattern edge contrast statistics to predict detection speed and success in triggerfish (*Rhinecanthus aculeatus*). *J. Exp. Biol.* **225**, jeb.244677. (doi:10.1242/jeb.244677)
- Hebets EA, Papaj DR. 2005 Complex signal function: developing a framework of testable hypotheses. *Behav. Ecol. Sociobiol.* **57**, 197–214. (doi:10.1007/s00265-004-0865-7)
- Winters AE, Green NF, Wilson NG, How MJ, Garson MJ, Marshall NJ, Cheney KL. 2017 Stabilizing

- selection on individual pattern elements of aposomatic signals. *Proc. R. Soc. B* **284**, 20170926. (doi:10.1098/rspb.2017.0926)
41. Endler JA. 1991 Interactions between predators and prey. In *Behavioural ecology* (eds JR Krebs, NB Davies), pp. 169–196. Oxford, UK: Blackwell Scientific.
 42. Mappes J, Marples N, Endler JA. 2005 The complex business of survival by aposematism. *Trends Ecol. Evol.* **20**, 598–603. (doi:10.1016/j.tree.2005.07.011)
 43. Rowe C. 1999 Receiver psychology and the evolution of multicomponent signals. *Anim. Behav.* **58**, 921–931. (doi:10.1006/anbe.1999.1242)
 44. Ruxton GD, Allen WL, Sherratt TN, Speed MP. 2018 *Avoiding attack*. New York: Oxford University Press.
 45. Drinkwater E *et al.* 2022 A synthesis of deimatic behaviour. *Biol. Rev.* **3**, 2237–2267. (doi:10.1111/brv.12891)
 46. Cortesi F, Cheney KL. 2010 Conspicuousness is correlated with toxicity in marine opisthobranchs. *J. Evol. Biol.* **23**, 1509–1518. (doi:10.1111/j.1420-9101.2010.02018.x)
 47. Winters AE, Wilson NG, van den Berg CP, How MJ, Endler JA, Marshall NJ, White AM, Garson MJ, Cheney KL. 2018 Toxicity and taste: unequal chemical defences in a mimicry ring. *Proc. R. Soc. B* **285**, 20180457. (doi:10.1098/rspb.2018.0457)
 48. Rudman WB. 1991 Purpose in pattern: the evolution of color in chromodorid nudibranchs. *J. Molluscan Stud.* **57**, 5–21. (doi:10.1093/mollus/57.Supplement_Part_4.5)
 49. Winters AE, Chan W, White AM, Berg CP, Garson MJ, Cheney KL. 2022 Weapons or deterrents? Nudibranch molluscs use distinct ecological modes of chemical defence against predators. *J. Anim. Ecol.* **91**, 831–844. (doi:10.1111/1365-2656.13643)
 50. van den Berg CP, Troscianko J, Endler JA, Marshall NJ, Cheney KL. 2020 Quantitative Colour Pattern Analysis (QCPA): A comprehensive framework for the analysis of colour patterns in nature. *Methods Ecol. Evol.* **11**, 316–332. (doi:10.1111/2041-210X.13328)
 51. Coleman N, Cobb G, Mullins D. 2015 *Nudibranchs encyclopedia*. Oakland, CA: Thomas Slone, Masalai Press and Tim Hochgrebe.
 52. Debelius H, Kuitert RH. 2007 *Nudibranchs of the world*. Frankfurt, Germany: IKAN-Unterwasserarchiv.
 53. Gosliner TM, Valdes A, Behrens DW. 2018 *Nudibranch & Sea slug identification: Indo-Pacific*, 2nd edn. Jacksonville, FL: New World Publications.
 54. La Barre SC, Coll JC, Sammarco PW. 1986 Defensive strategies of soft corals (Coelenterata: Octocorallia) of the Great Barrier Reef. II. The relationship between toxicity and feeding deterrence. *Biol. Bull.* **171**, 565–576. (doi:10.2307/1541624)
 55. Pawlik J, Chanas B, Toonen R, Fenical W. 1995 Defenses of Caribbean sponges against predatory reef fish. I. Chemical deterrence. *Mar. Ecol. Prog. Ser.* **127**, 183–194. (doi:10.3354/meps127183)
 56. Winters AE, White AM, Dewi AS, Mudianta IW, Wilson NG, Forster LC, Garson MJ, Cheney KL. 2018 Distribution of Defensive Metabolites in Nudibranch Molluscs. *J. Chem. Ecol.* **44**, 384–396. (doi:10.1007/s10886-018-0941-5)
 57. Champ CM, Wallis G, Vorobyev M, Siebeck U, Marshall J. 2014 Visual acuity in a species of coral reef fish: *Rhinecanthus aculeatus*. *Brain. Behav. Evol.* **83**, 31–42. (doi:10.1159/000356977)
 58. Sibeaux A, Cole GL, Endler JA. 2019 The relative importance of local and global visual contrast in mate choice. *Anim. Behav.* **154**, 143–159. (doi:10.1016/j.anbehav.2019.06.020)
 59. Sibeaux A, Camduras T, Endler JA. 2021 The role of boundary length and adjacent patch contrast in guppy mate choice. *Behav. Ecol.* **32**, 30–40. (doi:10.1093/beheco/raaa097)
 60. Endler JA, Cole GL, Kranz AM. 2018 Boundary strength analysis: Combining colour pattern geometry and coloured patch visual properties for use in predicting behaviour and fitness. *Methods Ecol. Evol.* **9**, 2334–2348. (doi:10.1111/2041-210X.13073)
 61. Hubel DH, Wiesel TN. 1962 Receptive fields, binocular interaction and functional architecture in the cat's visual cortex. *J. Physiol.* **160**, 106–154. (doi:10.1113/jphysiol.1962.sp006837)
 62. Vorobyev M, Osorio D. 1998 Receptor noise as a determinant of colour thresholds. *Phil. Trans. R. Soc. B* **265**, 351–358. (doi:10.1098/rspb.1998.0302)
 63. Hempel de Ibarra N, Giurfa M, Vorobyev M. 2001 Detection of coloured patterns by honeybees through chromatic and achromatic cues. *J. Comp. Physiol. A Sensory. Neural. Behav. Physiol.* **187**, 215–224. (doi:10.1007/s003590100192)
 64. Kuhn M. 2021 caret: Classification and Regression Training. R package version 6.0-90. See <https://CRAN.R-project.org/package=caret>
 65. R Core Team. 2021 R: A Language and Environment for Statistical Computing.
 66. Hollander M, Wolfe DA. 1973 *Nonparametric statistical methods*. New York: John Wiley & Sons Ltd.
 67. Dunn OJ. 1964 Multiple comparisons using rank sums. *Technometrics* **6**, 241. (doi:10.2307/1266041)
 68. Bland JM, Altman DG. 1995 Statistics notes: Multiple significance tests: the Bonferroni method. *BMJ* **310**, 170. (doi:10.1136/bmj.310.6973.170)
 69. Ogle H. D, Doll J, Wheeler P, Dino A. 2022 FSA: Fisheries Stock Analysis.
 70. Bates D, Maechler M, Bolker B, Walker S. 2015 Fitting Linear Mixed-Effects Models Using lme4. *J. Stat. Softw.* **67**, 1–48. (doi:10.18637/jss.v067.i01)
 71. Kuznetsova A, Brockhoff PB, Christensen RHB. 2017 lmerTest Package: Tests in Linear Mixed Effects Models. *J. Stat. Softw.* **82**, 1–26. (doi:10.18637/JSS.V082.i13)
 72. Peterson RA, Cavanaugh JE. 2020 Ordered quantile normalization: a semiparametric transformation built for the cross-validation era. *J. Appl. Stat.* **47**, 2312–2327. (doi:10.1080/02664763.2019.1630372)
 73. Stevens M. 2007 Predator perception and the interrelation between different forms of protective coloration. *Proc. R. Soc. B* **274**, 1457–1464. (doi:10.1098/rspb.2007.0220)
 74. Troscianko J, Skelhorn J, Stevens M. 2017 Quantifying camouflage: how to predict detectability from appearance. *BMC Evol. Biol.* **17**, 7. (doi:10.1186/s12862-016-0854-2)
 75. Nokelainen O, Scott-Samuel NE, Nie Y, Wei F, Caro T. 2021 The giant panda is cryptic. *Sci. Rep.* **11**, 1–10. (doi:10.1038/s41598-021-00742-4)
 76. Rohr VA, Volkmer T, Metzler D, Küpper C. 2021 Neoptile feathers contribute to outline concealment of precocial chicks. *Sci. Rep.* **11**, 5483. (doi:10.1038/s41598-021-84227-4)
 77. Santiago C, Green NF, Hamilton N, Endler JA, Osorio DC, Marshall NJ, Cheney KL. 2020 Does conspicuousness scale linearly with colour distance? A test using reef fish. *Proc. R. Soc. B* **287**, 20201456. (doi:10.1098/rspb.2020.1456)
 78. Briolat ES, Burdfield-Steel ER, Paul SC, Katja HR, Seymoure BM, Stankowich T, Stuckert AMM. 2019 Diversity in warning coloration: selective paradox or the norm? *Biol. Rev.* **94**, 388–414. (doi:10.1111/brv.12460)
 79. Cuthill IC *et al.* 2017 The biology of color. *Science* **357**, 1–7. (doi:10.1126/science.aan0221)
 80. Nokelainen O, Hegna RH, Reudler JH, Lindstedt C, Mappes J. 2012 Trade-off between warning signal efficacy and mating success in the wood tiger moth. *Proc. R. Soc. B* **279**, 257–265. (doi:10.1098/rspb.2011.0880)
 81. Hegna RH, Nokelainen O, Hegna JR, Mappes J. 2013 To quiver or to shiver: Increased melanisation benefits thermoregulation, but reduces warning signal efficacy in the wood tiger moth. *Proc. R. Soc. B* **280**, 20122812. (doi:10.1098/rspb.2012.2812)
 82. Lindstedt C, Lindström L, Mappes J. 2009 Thermoregulation constrains effective warning signal expression. *Evolution* **63**, 469–478. (doi:10.1111/j.1558-5646.2008.00561.x)
 83. Cobb G, Willan RC. 2006 *Undersea Jewels*. Canberra, Australia: Advance Press Pty Ltd.
 84. Caves EM, Brandley NC, Johnsen S. 2018 Visual acuity and the evolution of signals. *Trends Ecol. Evol.* **33**, 358–372. (doi:10.1016/j.tree.2018.03.001)
 85. van den Berg C, Endler JA, Cheney KL. 2023 Data from: Signal detectability and boldness are not the same: the function of defensive coloration in nudibranchs is distance-dependent. Dryad Digital Repository. (doi:10.48610/03c56dd)
 86. van den Berg C, Endler JA, Cheney KL. 2023 Signal detectability and boldness are not the same: the function of defensive coloration in nudibranchs is distance-dependent. Figshare. (doi:10.6084/m9.figshare.c.6730004)