

# UC Irvine

## UC Irvine Previously Published Works

### Title

A high throughput bispecific antibody discovery pipeline

### Permalink

<https://escholarship.org/uc/item/8fs1g0vp>

### Journal

Communications Biology, 6(1)

### ISSN

2399-3642

### Authors

Segaliny, Aude I  
Jayaraman, Jayapriya  
Chen, Xiaoming  
et al.

### Publication Date



2023

### DOI

10.1038/s42003-023-04746-w

Peer reviewed

## A high throughput bispecific antibody discovery pipeline

Aude I. Segaliny<sup>1,9</sup>, Jayapriya Jayaraman<sup>2,9</sup>, Xiaoming Chen<sup>1,9</sup>, Jonathan Chong<sup>1,9</sup>, Ryan Luxon<sup>1,9</sup>, Audrey Fung<sup>1</sup>, Qiwei Fu<sup>1</sup>, Xianzhi Jiang<sup>1</sup>, Rodrigo Rivera<sup>1</sup>, Xiaoya Ma<sup>1</sup>, Ci Ren<sup>1</sup>, Jan Zimak<sup>3</sup>, Per Niklas Hedde<sup>2</sup>, Yonglei Shang<sup>1</sup>, George Wu<sup>1</sup>  <sup>✉</sup> & Weian Zhao<sup>2,3,4,5,6,7,8</sup> 

Bispecific antibodies (BsAbs) represent an emerging class of immunotherapy, but inefficiency in the current discovery has limited their broad clinical availability. Here we report a high throughput, agnostic, single-cell-based functional screening pipeline, comprising molecular and cell engineering for efficient generation of BsAb library cells, followed by functional interrogation at the single-cell level to identify and sort positive clones and downstream sequence identification and functionality characterization. Using a CD19xCD3 bispecific T cell engager (BiTE) as a model, we demonstrate that our single-cell platform possesses a high throughput screening efficiency of up to one and a half million variant library cells per run and can isolate rare functional clones at a low abundance of 0.008%. Using a complex CD19xCD3 BiTE-expressing cell library with approximately 22,300 unique variants comprising combinatorially varied scFvs, connecting linkers and VL/VH orientations, we have identified 98 unique clones, including extremely rare ones (~ 0.001% abundance). We also discovered BiTEs that exhibit novel properties and insights to design variable preferences for functionality. We expect our single-cell platform to not only increase the discovery efficiency of new immunotherapeutics, but also enable identifying generalizable design principles based on an in-depth understanding of the inter-relationships between sequence, structure, and function.

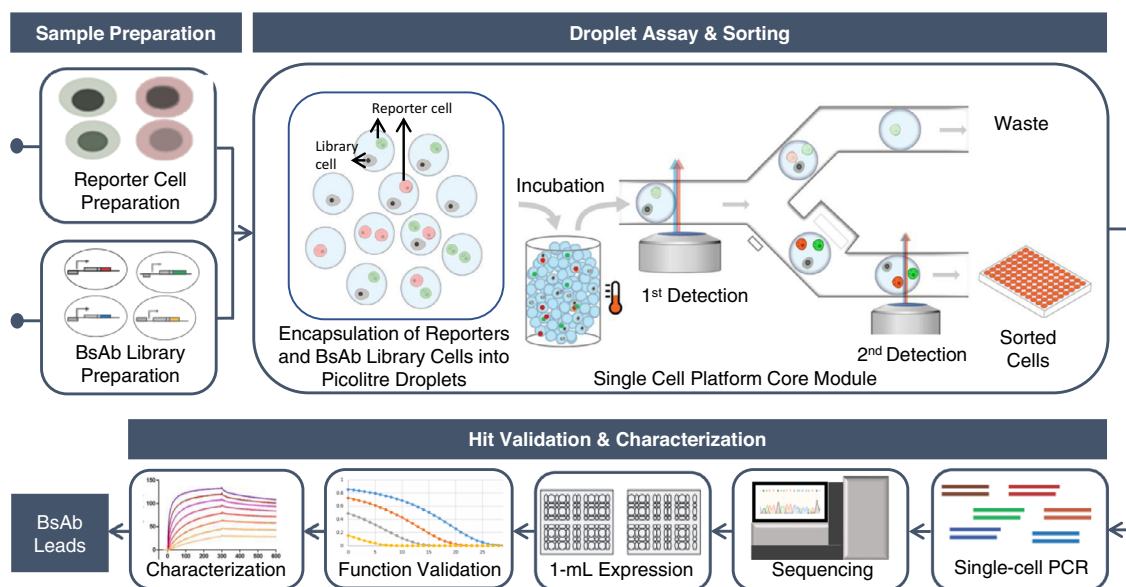
<sup>1</sup>Amberstone Biosciences, Inc., Irvine, CA 92618, USA. <sup>2</sup>Department of Biomedical Engineering, University of California, Irvine, Irvine, CA 92697, USA. <sup>3</sup>Department of Pharmaceutical Sciences, University of California, Irvine, Irvine, CA 92697, USA. <sup>4</sup>Sue and Bill Gross Stem Cell Research Center, University of California, Irvine, Irvine, CA 92697, USA. <sup>5</sup>Chao Family Comprehensive Cancer Center, University of California, Irvine, Irvine, CA 92697, USA. <sup>6</sup>Edwards Life Sciences Center for Advanced Cardiovascular Technology, University of California, Irvine, Irvine, CA 92697, USA. <sup>7</sup>Department of Biological Chemistry, University of California, Irvine, Irvine, CA 92697, USA. <sup>8</sup>Institute for Immunology, University of California, Irvine, Irvine, CA 92697, USA. <sup>9</sup>These authors contributed equally: Aude I. Segaliny, Jayapriya Jayaraman, Xiaoming Chen, Jonathan Chong, Ryan Luxon. ✉email: [george@amberstonebio.com](mailto:george@amberstonebio.com); [weianz@uci.edu](mailto:weianz@uci.edu)

Bispecific antibodies (BsAbs) represent a highly attractive class of antibodies and immunotherapeutics that hold great potential to treat many disorders, including cancer and autoimmunity<sup>1–5</sup>. They are unnatural biologics that are engineered to recognize two different epitopes either on the same or different target antigens. BsAbs offer unique therapeutic modes of action, such as activating and engaging immune cells to kill tumor cells and simultaneously acting on two synergizing therapeutic targets<sup>5–8</sup>. Therefore, BsAbs can exhibit superior therapeutic advantages over traditional monoclonal antibodies (mAbs) with respect to specificity, efficacy, toxicity, and drug resistance. T cell activating BsAbs (TABs) represent the largest subclass of BsAbs and account for over 50% of the BsAb preclinical and clinical pipeline<sup>9</sup>, including clinically approved Blinatumomab (CD3xCD19), Tebentafusp-tebn (CD3xGP100), Mosunetuzumab (CD3xCD20), and Teclistamab (CD3xBCMA)<sup>9,10</sup>. TABs can directly link T cells and tumor cells for killing and hold great potential to treat many types of cancer. There are currently over 45 CD3-based TABs, including BCMAxCD3, Her2xCD3, CEAxCD3, and PSMAxCD3, being clinically tested for the treatment of solid and hematological cancers<sup>1,6</sup>. TABs can be designed in several formats, including bispecific T cell engagers (BiTEs), which use tandemly linked single-chain fragment variable fragments (scFvs) targeting a T cell epitope and tumor antigen and common-light-chain IgG with a full-size immunoglobulin configuration where each variable heavy chain targets either a T-cell receptor or a tumor antigen<sup>1,6</sup>.

Unfortunately, developing therapeutic BsAbs, including TABs, remains to be an extremely challenging, slow, and costly process, limiting their clinical availability for a broad range of diseases. We attribute this bottleneck largely to the complexity and inefficiency of the current BsAb discovery methods. The conventional workflow for BsAb discovery commonly starts with characterizing a pool of mAb binders for two respective antigens or epitopes. Then a panel of mAbs is selected for engineering BsAb variants individually by joining two antigen-binding domains derived from each parental mAb via subunit heterodimerization or direct genetic fusion (e.g., BiTEs)<sup>11–23</sup>. Then a limited number of BsAb variants are expressed, purified, and subsequently tested individually in a dual-target binding assay and/or a functional assay to

identify positive clones. Of note, despite that BsAb construction usually starts with two pre-characterized antigen binders, integrating them to become a functional BsAb is much less straightforward. Indeed, the binding activity of a BsAb to its targets is only a prerequisite, which does not always translate into functional activity. For instance, Emicizumab (a clinically approved BsAb to treat hemophilia A) was discovered by a ‘brute-force’ approach where approximately 40,000 candidates had to be individually expressed, characterized, and optimized<sup>11</sup>. For TABs, specifically, the T cell activation and tumor-killing functions of resulting BsAbs depend crucially on numerous factors, including epitope location and distance to cell membrane<sup>24–29</sup>, antigen size and density<sup>27–36</sup>, antibody/antigen binding affinity<sup>31–35,37,38</sup>, the size, valency, folding, structural orientation and mechanics of BsAbs, and the linker length and flexibility<sup>27,36,39–42</sup>. While it is well recognized that small variations in BsAbs’ formats and characteristics can be critical determinants of functionality, the relationships among these factors are complicated, and currently, there is no general design principle that can inform BsAb function. Practically, therefore, the field has been relying on a trial-and-error process in which BsAbs are empirically designed and constructed from existing mAb binders and must then be evaluated individually for their functionality. This conventional approach, typically involving a microtiter plate and liquid handling system, is biased and significantly limits BsAb discovery throughput, success rate, and turnaround time to identify a therapeutic lead for further development.

In this work, we describe a high throughput, single-cell-based BsAb functional screening pipeline (Fig. 1) that can directly interrogate the functions of a large number of individual BsAb variants from an unbiased library. The single-cell pipeline integrates several modules, including a molecular and cell engineering module for efficient generation of BsAb-variant cell libraries and reporter cells, an opto-electro-mechanical module for droplet-based single-cell functional screening to identify and sort desired BsAb clones, and a downstream molecular analysis and validation module to determine the sequences and functionality of the candidate BsAbs (Fig. 1). At its core, the single cell platform employs a droplet microfluidic-based system to compartmentalize and interrogate individual BsAb-producing cells with



**Fig. 1 Overview of single-cell-based BsAb discovery pipeline.** The schematics depicts the different steps of the microfluidics platform used for BsAb discovery, from sample preparation (reporter cell and BsAb library cells), droplet assay and detection/sorting followed by downstream single-cell PCR, sequencing, protein expression and functional validation/characterization of sorted clones.

co-encapsulated cell reporters. Functional BsAb clones will be able to activate cell reporters to produce fluorescence, which allows “positive” droplets to be detected and sorted from a heterogeneous population. Of note, we have implemented innovative multiplexed orthogonal assay chemistry, multi-point detection, and droplet-indexing strategy to ensure screening fidelity. Using an established CD19xCD3 BiTE as a model system, we describe below how each module is constructed in a streamlined workflow. We have demonstrated that our single-cell platform can accommodate one and half million library cells in a single run, which is 2–3 orders of magnitude higher in throughput than that of conventional methods (10s–100s of clones for manual microtiter-plate handling methods or 1000s–10,000s of clones for robotics-liquid handling systems). Using a spiked library prepared with HEK293 cells that express human CD19 at a comparable level to lymphoma cell lines and secretes a functional CD19xCD3 BiTE, we characterized the analytical performance, including screening efficiency, and demonstrated the single cell platform is capable of isolating  $\geq 1$  copies of a rare functional clone (0.008% abundance) with 95% confidence in a single run. Using a complex CD19xCD3 BiTE library with approximately 22,300 unique variants where we combinatorially varied scFv binders encompassing different epitopes and affinities, VL/VH orientations, and length and flexibility of scFv connecting linkers, we have identified 98 unique functional clones including extremely rare clones ( $\sim 0.001\%$  abundance) and clones bearing rigid scFv connecting peptide linkers that are against conventional wisdom. Sequence analysis of sorted clones further interrogated preferences of different design variables for functionality and discovered that the CD19<sub>VL-VH</sub>-CD3<sub>VH-VL</sub> and CD19<sub>VH-VL</sub>-CD3<sub>VH-VL</sub> arrangements are the most favored orientation. Sequence analysis further revealed the sequence composition of the CDRH3 domain at single residue resolution and identified amino acid residues conserved or promiscuous for function.

## Results

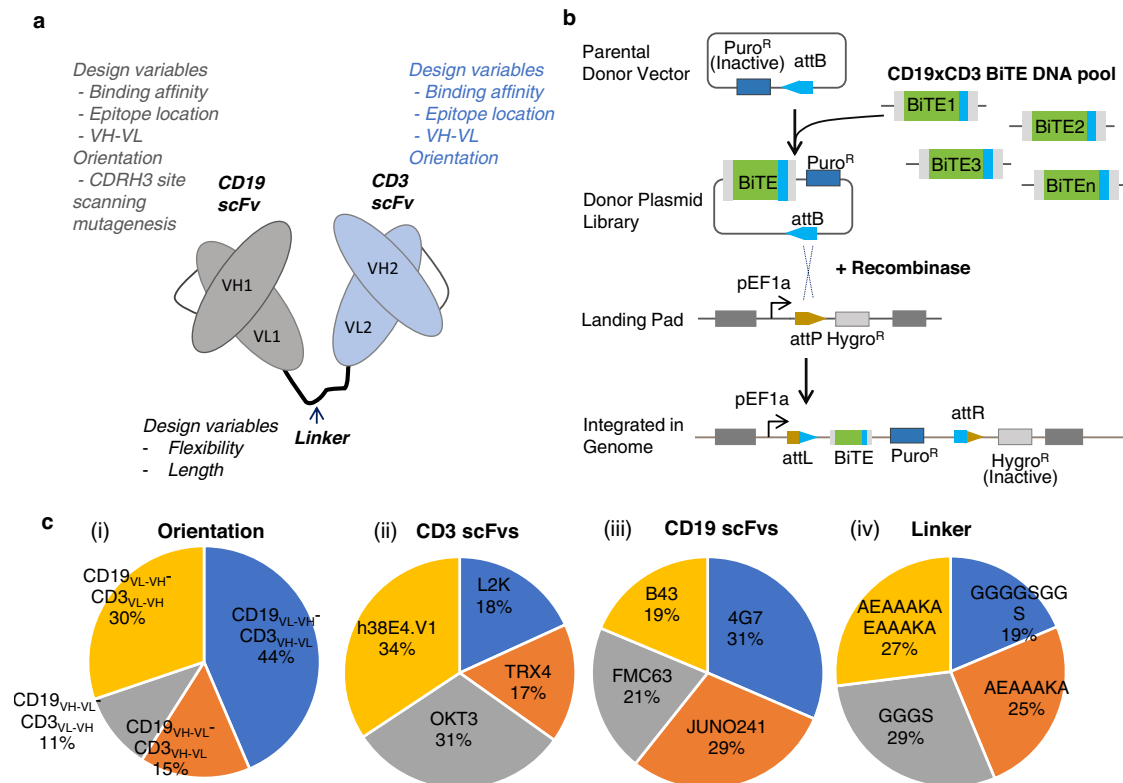
**BsAb structural and compositional considerations, and combinatorial library design.** The structural and compositional attributes of BsAb design have a significant impact on their functionalities. Unlike the trial-and-error approach used in conventional methods, we can conduct unbiased interrogation of many structural and compositional variables (e.g., affinity, epitope location, linker design, and relative orientations of the binding antibody moieties) combinatorially without prior knowledge owing to our single-cell platform’s high throughput. In this study, we sought to develop and validate the platform using CD19xCD3 BiTE as a model because it has been clinically validated and widely studied (i.e., Blinatumomab) before we expand its utility to other BsAbs in the future. BiTEs consist of tandem single-chain fragment variables (scFvs), with one scFv binding to a T cell receptor subunit (most commonly CD3 $\epsilon$ ) and the other to a target antigen (e.g., a tumor-associated antigen) (Fig. 2a). The two scFvs are linked by a peptide linker. Each scFv comprises a VH and a VL domain derived from mAb binders, which are linked by a short peptide linker. Engaging T cells with tumor cells in close proximity using BiTEs activates T cells to release cytokines and apoptotic factors (mainly perforins and granzymes) that subsequently can kill tumor cells.

Our library design incorporates multiple variables, including choice of scFv targeting various epitopes, scFv binding affinities, length and flexibility of linkers, and orientation of scFvs, all known determinants of BiTE functionality (Fig. 2a). For CD19 binders, we chose scFv sequences based on mAb 4G7, mAb FMC63, mAb B43 and mAb Juno241 (listed Supplementary Table 1 with their characteristics). mAb B43 is the basis of

Blinatumomab<sup>43,44</sup>. mAb 4G7 and mAb FMC63 bind to a conformationally similar epitope on hCD19, but distinct from that of B43 binding epitope<sup>45</sup>. While 4G7 and B43 reportedly have similar affinities, FMC63 has at least one order of magnitude higher affinity<sup>43,46–48</sup>. Juno241 has been shown to have strong binding to CD19<sup>49</sup>. We also similarly adapted four CD3 mAb binders, OKT3, L2K, h38E4.v1, and TRX4 (listed in Supplementary Table 2 with their characteristics). L2K, for instance, shares over 90% sequence identity with OKT3 and recognizes the same epitope on CD3 $\epsilon$  but differs in affinity by about 100-fold<sup>50,51</sup>. L2K is the basis of clinically approved Blinatumomab molecule<sup>43</sup>, while OKT3 and TRX4 are commercially available as mAb formats for treatment of certain auto-immune conditions<sup>52</sup>. TRX4 and h38E4.v1 have a higher affinity to CD3 compared to OKT3 and L2K<sup>43,51,53,54</sup>. To increase library diversity, we performed a site scanning mutagenesis with NNW degenerate codons on the CDRH3 region of the CD19 scFv candidates (see Methods). For peptide linkers that connect the two scFvs, we chose flexible short and long linkers based on the GGGGS motif as well as rigid short and long linkers based on the EAAAK motif (Supplementary Table 3)<sup>55,56</sup>. The theoretical diversity of our combinatorial library, calculated as the product of the number of distinct CD19 and CD3 variants, number of scFv interconnecting linkers, and number of different VL/VH orientations, is 47,880 (Supplementary Table 4). A mammalian cell-based BiTE expression system incorporating this diverse library is then constructed (below) to prepare input BsAb-variant expressing cell library for the single cell screening pipeline.

**Construction of mammalian cell-based BsAb-variant expressing library cells encoding a single copy each for a BsAb variant and expressing target antigens.** We conceived a screening strategy where reporter T-cells will be encapsulated in droplets with a single BiTE-secreting cell that also expresses the target antigen of interest, human CD19, on the surface at levels comparable to common lymphoma cell lines. Having CD19 and BiTE expressed in the same cell, rather than in two different cells, allows us to achieve adequate droplet co-encapsulation efficiency with the reporter cell due to Poisson distribution<sup>57</sup>. We expect that functional BiTEs secreted from the CD19 expressing cells will crosslink the cell surface CD19 and TCR-CD3 complex on the T cell reporter cells and produce an optically detectable intradroplet reporter signal. To ensure that we can connect the intradroplet reporter signal (phenotype) to a specific BiTE sequence (genotype), it is crucial that only one type of BiTE variant is expressed from each CD19-expressing cell. To accomplish this, we sought to develop a mammalian (HEK293) cell-based BiTE variant library expression platform where each cell in the library is genetically integrated with a landing-pad expression vehicle that encodes a single copy each for a BsAb variant. HEK293 was chosen here in part because of its ease of use for small-scale expression as well as scaled production for recombinant proteins, including BsAbs. Specifically, we adopted a commercially available HEK293 landing-pad parental line (“HEK293\_LP”) that has an integrated “landing-pad” component in the genome (i.e., single BxB1 recombinase-attP attachment site in Hipp11 (H11) safe-harbor locus on Chromosome 22 in the human genome)<sup>58</sup>. The compatibility of this HEK293 landing-pad line for efficient integration (up to 38%) of an exogenous gene-of-interest is validated by mCherry gene insertion in the landing-pad locus (Supplementary Fig. 1a).

We next prepared a target cell line that expresses human CD19 and a functional CD19xCD3 BiTE. We first stably integrated a CD19 expression cassette in a safe harbor locus on Chromosome 1 using CRISPR-Cas9 in the HEK293\_LP cell line<sup>59</sup>. We then



**Fig. 2** BiTE library generation and characterization of integrated library diversity. **a** Design variables interrogated for the CD19 scFvs CD3 scFvs, and peptide linker connecting the scFvs. **b** Schematic representation of the integration of single copy BiTE variant in landing pad harboring HEK293 cell line (HEK293\_LP) with promoterless BiTE gene encoding donor plasmid library. **c** Representation of diversity of BiTE design features obtained from long-read amplicon sequencing (PacBio SMRT) of PCR amplified BiTE genes from genomic DNA of BiTE integrated HEK293\_LP cells, distribution of relative orientation of scFvs (i), Distribution of relative CD3 scFvs (ii), Distribution of CD19 scFvs (iii) and Distribution of scFv interconnecting linkers (iv). ~22,300 unique BiTE sequences obtained from long-read amplicon sequencing were used for analyzing the distribution of design parameters (relative scFv orientation, CD3 scFv type, CD19 scFv type, and scFv interconnecting linker type). The genomic DNA template used for amplifying integrated BiTE genes was obtained from  $3 \times 10^6$  HEK\_LP<sup>CD19/BiTE</sup> cells obtained from  $n = 1$  integration experiment.

clonally selected CD19-engineered HEK293\_LPs for CD19 expression levels comparable to other standard CD19+ cells, including Raji, NALM-6, and SU-DHL-6 (Supplementary Fig. 1b). Lastly, we created a BiTE-expressing cell library with size and diversity that recapitulate those of typical antibody germline alleles and epitopes for a given target. For this, we first generated a “donor” plasmid library pool which harbored combinatorially combined BiTE variants downstream an “attB” attachment site (See Methods). The combinatorial elements for making the library have been discussed in the previous section and in Supplementary Tables 1–4. The BiTE harboring donor plasmid library was then integrated using integrase-mediated recombination into the landing pad of the HEK293\_LP<sup>CD19</sup> cells to obtain a BiTE-expression cell library (HEK293\_LP<sup>CD19/BiTE</sup>). A schematic of the donor plasmid integration into the landing pad attachment site is illustrated in Fig. 2b. Following integration, antibiotic selection ensures enrichment of single copy BiTE variant integrated HEK\_LP<sup>CD19/BiTE</sup> cells. Genomic DNA from BiTE-integrated cells was selectively PCR amplified with BiTE gene-specific primers, and PCR amplicons were analyzed by long-read amplicon sequencing (PacBio, SMRT). We were able to obtain ~22,300 unique, full-length BiTE variants integrated into the mammalian cell library. Additionally, we also confirmed a well-distributed representation of design parameters such as scFv clones, linkers, and orientations in the integrated BiTE variants

(Fig. 2c). We also engineered a single copy Blnatumomab integrated HEK293\_LP<sup>CD19</sup> cell line (HEK293\_LP<sup>CD19/Blin</sup>) using the same integrase mediated approach described above with a donor plasmid containing an expression cassette of the Blnatumomab BiTE which bears the identical amino acid sequences as the FDA-approved Blnatumomab, including the same C-terminal 6XHis tag. We verified the expression of Blnatumomab by flow cytometry using intracellular staining of the engineered cells with an anti-his tag antibody (Supplementary Fig. 1c).

**Single-cell-based BsAb functional assay.** The core of our single-cell platform is the opto-electro-mechanical module for droplet-based single-cell assay (Fig. 1). This module is capable of highly efficient cell-encapsulation, cell droplet incubation (off-chip in this study), sensitive and efficient detection of intra-droplet live cells using photomultiplier tubes (PMTs), and highly efficient droplet sorting via fluorescence-activated droplet sorting using dielectrophoresis (DEP). Of note, our single-cell platform employs innovative multi-point, sequential detections coupled with kinetic droplet indexing, wherein the second-point detection can employ a PMT or serial droplet imaging using a camera to provide spatial resolution. We have demonstrated that individual target and reporter cells can be co-encapsulated with an adequate efficiency of ~20% (due to Poisson distribution<sup>57</sup>) into uniform,

stable water-in-oil droplets using a flow-focusing device at a throughput of 1000 s of droplets per second. The droplet size (240 pL used in this study), medium composition, and droplet incubation conditions have been tuned to accommodate commonly used cells, including Jurkat, HEK293, and primary T cells with  $\geq 90\%$  viability over 9 hours (Supplementary Fig. 2). Of note, based on the density of the media, target, and reporter cells tend to settle to the bottom of a spherical droplet, where they would then be in physical contact to facilitate interactions. Intra-droplet fluorescent particles (cells or microbeads) can be detected with approx. 90% detection efficiency (Supplementary Fig. 3a, b), and the positive droplets can be sorted efficiently even for low-abundance ( $<0.1\%$ ) clones with a sorting throughput of 100s–1000 Hz. For example, as a demonstration, Supplementary Fig. 3c showed efficient sorting enrichment of positive droplets from a starting pool of droplets with 10% positive droplets containing  $\geq 1$  fluorescent cell. The sorted droplets can be individually dispensed into microtiter plates for downstream molecular analyses and validations.

A key innovation of our single-cell platform is the ability to directly screen for functionalities that confer therapeutic modes of action to circumvent the need to identify binders first and then evaluate their individual functions as required in conventional assays. Specifically, to screen for functional BiTEs based on T cell activation, we employed a T-cell reporter system (“Jurkat-ZsG”) derived from Jurkat cell (E6.1) that expresses ZsGreen fluorescent protein downstream of TCR activation pathway driven by a promoter with 6 $\times$  nuclear factor of activated T-cell (NFAT) transcriptionally responsive elements (TREs)<sup>60</sup> to interrogate BiTE mediated T-cell/tumor cell interaction and T-cell activation (Fig. 3a). We first functionally validated Jurkat-ZsG in a coculture assay with CD19+ Raji cell in bulk using a recombinant BiTE with a sequence identical to that of Blinatumomab and conditioned media from our engineered HEK293<sub>LP<sup>CD19/Blin</sup></sub> (Supplementary Fig. 4a). Using this bulk assay, we further validated our HEK293<sub>LP<sup>CD19/BiTE</sup></sub> library secreting functional CD19 $\times$ CD3 BiTE clones using purified supernatant from HEK293<sub>LP<sup>CD19/BiTE</sup></sub> cells (Supplementary Fig. 4b). T cell reporter activation mediated by Blinatumomab-BiTE exhibited high activation efficiency (40%) with a false positive rate of 1% and fast kinetics (signal detectable in 3 h and peaking in 6–9 h) in droplets (Fig. 3b, c). These data support that the T cell/target cell interaction mediated by BiTEs can be functionally and efficiently assayed in a compartmentalized droplet format at the single cell level. Similarly, we have developed and characterized a second Jurkat reporter system that expresses a far-red fluorescent protein E2-Crimson (“Jurkat-E2C”) which was used to improve BiTE screening fidelity and reduce false positives. The reporter signal threshold for sorting is typically set to be  $(\mu^{\text{negative}} + 4\sigma)$ , where  $\mu^{\text{negative}}$  and  $\sigma$  respectively, refer to the mean signal intensity and the standard deviation in unstimulated reporter cells. Of note, the Jurkat reporter cells express very little or no Perforin (a key apoptotic factor) upon T cell activation, and therefore they do not kill the target cells, which can hence be retrieved for downstream analyses<sup>61</sup>.

**Assessment of analytical performance of the single cell BsAb discovery platform.** We next characterized the throughput, screening efficiency, reproducibility, and false positive rate of our single-cell BsAb discovery platform using a spiked library prepared with Blinatumomab expressing HEK293<sub>LP<sup>CD19/Blin</sup></sub>. Briefly, HEK293<sub>LP<sup>CD19/Blin</sup></sub> was spiked into a pool of parental HEK293<sub>LP<sup>CD19</sup></sub> cells at different ratios ranging from 0.003 to 1%. Each spiked cell sample is co-encapsulated with the Jurkat-ZsG reporter cells to generate assay droplets using a droplet

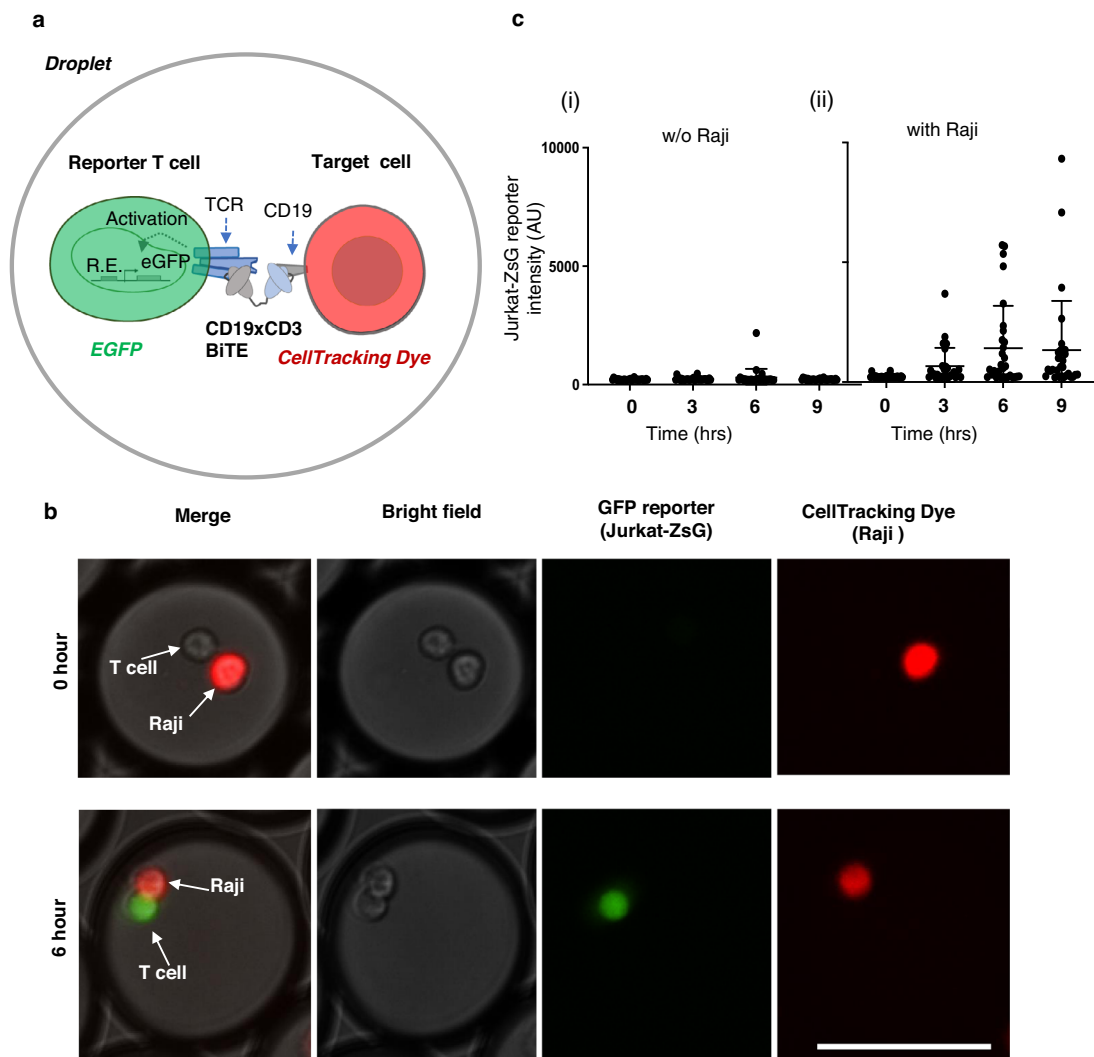
generation module, where (a) the average number of HEK293 cells per droplet is about 0.3, ensuring that  $\geq 96\%$  droplets contain either zero or one library cell, and (b)  $\sim 78\%$  droplets each have at least one reporter cell, with a theoretically maximal positive-droplet rate of about 31%. Upon six-hour incubation, the assay droplets are subject to detection and sorting with the single-cell platform’s core module. Recovered HEK293<sub>LP<sup>CD19/Blin</sup></sub> cells are verified by single-cell PCR (success rate 75–80%), followed by Sanger sequencing. Overall, we found that up to 1.5 million cells can be effectively screened per run in a single day. Dispensed droplets can be directly processed or stored at  $-80^\circ\text{C}$  for batch processing at a later time for downstream molecular biology and functional validation.

We observed that, with the HEK293<sub>LP<sup>CD19/Blin</sup></sub>-spiked cell samples, in a total number of 40 experimental runs over different spiking ratios ranging from 0.003% to 1%, our platform can consistently recover up to about 25–30% of all copies of this clone within each of the individual samples, given the theoretical upper limit of recovery rate ( $p$ ) of about 31% (Fig. 4a). With spiked samples of varying HEK293<sub>LP<sup>CD19/Blin</sup></sub> abundance (as low as 0.003%), we consistently recovered  $\geq 1$  copies of the clone from every run. Through multiple regression modeling (linear and 4- or 5-parameter logistical), a linear model was selected, which has a significant  $R^2$  (0.34) with a  $p$ -value of 0.0002 and fulfills the statistical assumptions (e.g., stable residual variance; independence and normality of the residuals). The prediction model with a 90% confidence interval is shown (Fig. 4b). With this prediction model, the screening efficiency ( $P$ ), defined as the probability of isolating at least one copy of a positive clone, is given by a binomial probability:  $P = 1 - (1 - p)^N$  (Fig. 4c), where the Bernoulli probability “ $p$ ” refers to the recovery rate. The binomial model predicts that our platform is well capable of isolating  $\geq 1$  copy of any rare functional clone (as low as 80 copies in one million cells, or 0.008%) with a 95% confidence level.

An additional key factor in efficient high throughput screening is to control the false-positive rate (FPR), which will impact the downstream workload as well as the operational cost. Reporter cells typically exhibit a certain basal level of inherent, false-positive activation. The main source of the false-positive activation appears to be non-specific or tonic signaling, which may, in part, be attributed to promoter leakiness. For our screening, we typically set a sorting threshold that tolerates 0.1–1% false positives (Supplementary Fig. 5a). To reduce FPR, we have employed an orthogonal assay chemistry where both the Jurkat-ZsG and Jurkat-E2C are co-encapsulated with HEK293<sub>LP<sup>CD19/BiTE</sup></sub>, and where only the droplets with dual reporter activation (both ZsGreen and E2-Crimson positive) are sorted. Such orthogonal assay readouts have been found to be highly useful in drastically reducing the false positive rate to  $<0.01\%$  (Supplementary Fig. 5b).

### Discover functional BsAbs using single cell discovery platform from a complex library.

We next assessed the performance of our single-cell BsAb discovery platform for functional BiTE screening from a complex library (HEK293<sub>LP<sup>CD19/BiTE</sup></sub>). As an internal reference, our positive control HEK293<sub>LP<sup>CD19/Blin</sup></sub> cells were spiked in HEK293<sub>LP<sup>CD19/BiTE</sup></sub> library cells at 0.1% abundance. All BiTE-expressing cells were stained with cell tracking dye (CellTrace<sup>TM</sup> Violet) (CTV). As described previously, the BiTE-expressing cells are co-encapsulated in droplets with Jurkat reporter cells such that the average number of BiTE-expressing HEK cells was 0.3 per droplet. For this experiment, we employed a 1:1 mixture of Jurkat-ZsG and Jurkat-E2C in order to reduce false positives. The average number of reporter cells per droplet was about three. Each of the “Positive” droplets contains a library

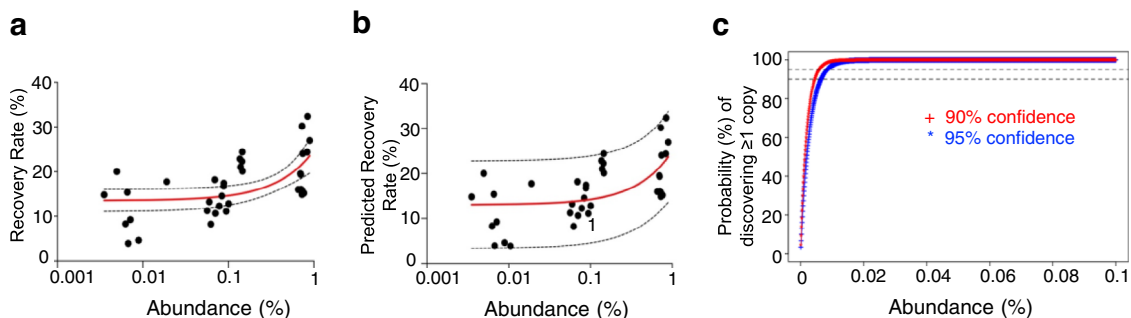


**Fig. 3** BiTE mediated activation of Jurkat-ZsG reporter cells in droplets. **a** Illustrative mechanism of CD19xCD3 BiTE mediated T cell activation in the droplet assay. R.E. responsive element. **b** Microscopic images of activated Jurkat-ZsG reporter cells (expressing a GFP reporter) in the presence of Raji cell (CD19+) and a research-grade recombinant Blinatumomab in droplets; scale bar, 100  $\mu$ m. Green, ZsGreen reporter signal; Red, a cell tracking dye pre-labeled for Raji. **c** ZsGreen signal intensity change in Jurkat-ZsG cells added with 100 ng/ml Blinatumomab, without Raji cells (i) and with Raji cells (ii) over 0–9 h time-points post-incubation. ZsGreen intensity was quantified for randomly chosen droplets (obtained from one encapsulation experiment) at each time point. Data for each timepoint is presented as a scatterplot with mean  $\pm$  SD error bars.

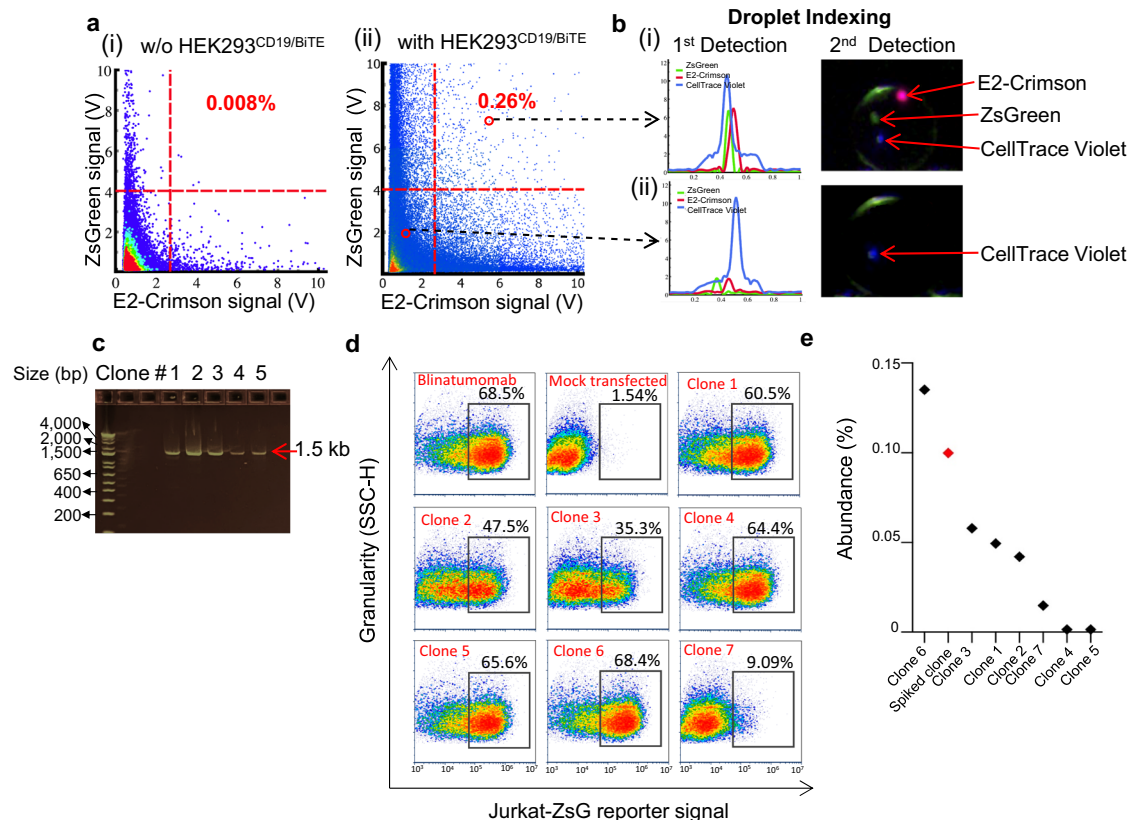
cell (CTV<sup>+</sup>, blue peak) and double reporter signals (Jurkat-ZsG and Jurkat-E2C, green and red peaks) after incubating the droplets for about 6 hours (Fig. 5a, b). The ability to interrogate multiple different signals in a multiplex fashion enables us to reduce false positive rate (resulting from tonic signaling and non-specific activation of reporter cells by e.g., aggregated BiTEs) to obtain rare clones of optimal quality. Each individual droplet was initially scanned at the first point of detection (Fig. 1). When a droplet containing double reporter signals (Jurkat-ZsG and Jurkat-E2C) and a HEK293\_LP<sup>CD19/BiTE</sup> library cell signal (CTV) was detected (Fig. 5b), the droplet was pulled into the sorting channel. After that, the sorted droplet moved downstream toward the second point of detection for further confirmation of the fluorescent signals. The second point of detection can employ a PMT or serial droplet imaging using a camera to provide spatial resolution (Fig. 5b). When the sorted droplet passed the thresholds at the second point of detection, a dispensing module was triggered to dispense the single sorted droplet into a PCR tube. The signals of each positive droplet from the first point and second point of detection can be matched with the PCR tube

number so that the signals can be further analyzed after sorting to determine if the sorted droplets are false positive ones. The multiple points of detection and indexing methods can further reduce the false-positive rate, thereby reducing the overall cost for downstream analysis.

We screened a total of 1.5 million BiTE expressing library cells in two independent runs and dispensed sorted positive droplets each into individual PCR tubes. Of note, the single-cell platform consistently recovered the HEK293\_LP<sup>CD19/Blin</sup> (positive control) in each run, where we spiked the cells at different ratios among HEK293\_LP<sup>CD19</sup> cells. Fig. 5a shows a representative screening experiment where 0.26% positive hits are detected with a low FPR of 0.008%. Figure 5b shows representative PMT profiles and images corresponding to a positive and negative droplet, respectively, using our tri-color assay (CellTrace<sup>TM</sup> Violet+ ZsG+ E2C+). We then performed downstream functional characterization of the sorted candidates. For this, we first subcloned BiTE gene fragments obtained by gene-specific PCR of cDNA synthesized from each sorted well into expression plasmids (See Methods, Supplementary Fig. 6). Fig. 5c shows representative

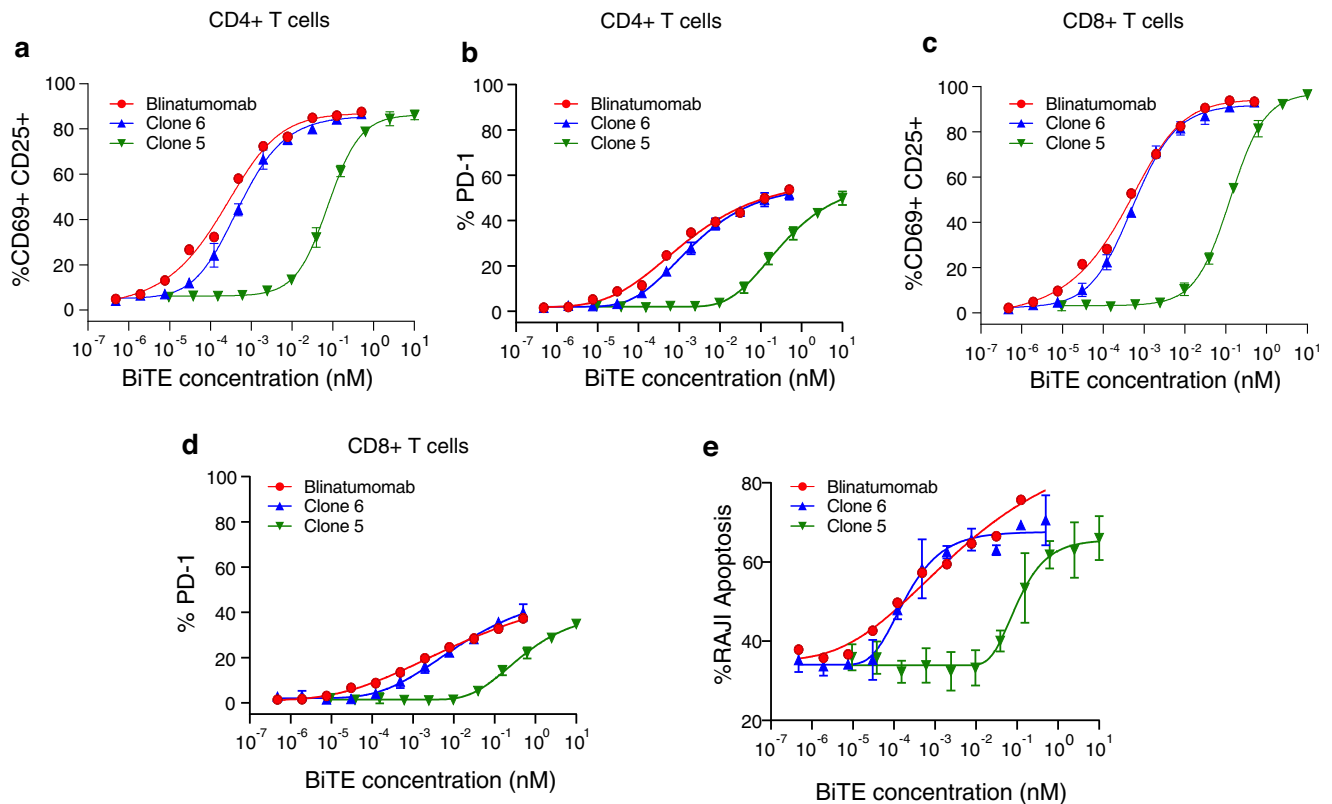


**Fig. 4 Determination of the screening efficiency for single-cell platform-based BsAb functional screening, using HEK293<sub>LP</sub><sup>CD19/Blin</sup>-spiked cell samples.** **a** Scatterplot showing the observed recovery rate versus the abundance of HEK293<sub>LP</sub><sup>CD19/Blin</sup> spiked in bulk negative cells (one million HEK<sub>LP</sub><sup>CD19</sup>). The recovery rate is defined as the isolated copy number divided by the total copy number initially spiked into a sample. Each data point (“dot”) is derived from the mix of *n* = 3 analytical replicates of spiked samples. The solid red line is derived from linear regression with one standard deviation bounds (dotted lines). **b** Predicted recovery rate based on a linear regression model and its 90% confidence interval (*R*<sup>2</sup> = 0.34; *p*-value = 0.0002; statistical assumptions largely fulfilled, e.g., stable residual variance). **c** Prediction of screening efficiency (“*P*”), defined as the probability of discovering ≥1 copy of a positive clone from a cell pool. This model is based on a binomial probability, where the Bernoulli probability “*p*” refers to the predicted recovery rate in the foregoing regression model, corresponding to a selected confidence lower bound (90%-solid red line or 95%-solid blue line).



**Fig. 5 Functional screening of the complex BiTE cell library HEK293<sub>LP</sub><sup>CD19/BiTE</sup> spiked with 0.1% HEK293<sub>LP</sub><sup>CD19/Blin</sup> using a double-reporter based orthogonal assay chemistry on the single cell screening platform.** **a** Representative scatterplots from two independent screening runs showing detected droplet signals after 6-h incubation. Jurkat-ZsG and Jurkat-E2C reporter cells were co-encapsulated without the BiTE library cells (i) or with the BiTE library cells (ii). HEK293<sub>LP</sub><sup>CD19/BiTE</sup> was pre-labeled with CellTrace<sup>TM</sup> Violet dye. Gating zones and activation rates are also shown. **b** Representative droplet signal (PMT) profiles and images corresponding to a positive cell (i) and negative cell (ii): HEK293<sub>LP</sub><sup>CD19/BiTE</sup> cell (CellTrace<sup>TM</sup> Violet, blue), an activated Jurkat-ZsG cell (ZsGreen, green), and an activated Jurkat-E2C cell (E2-Crimson, red). **c** Representative DNA agarose gel image showing single-cell PCR products from a panel of isolated CD19<sup>+</sup>CD3<sup>+</sup> BiTE clones. **d** Representative flow cytometry plots for bulk functional validation of seven recovered BiTE clones (obtained from two screening runs). Jurkat-ZsG reporter cells were co-cultured with CD19<sup>+</sup> Raji in the presence of a day-3 condition medium harvested from the 1-mL-scale expression from Expi293<sup>FM</sup> cells transfected with BiTE gene harboring expression plasmids. After 24-h incubation, the Jurkat-ZsG reporter cells were profiled by flow cytometry to measure the activation rate. Blinatumomab-BiTE was also transfected and expressed in parallel as a positive control. A total of 265 BiTE clones were tested for functionality using Jurkat-ZsG reporter activation assay (only seven clones are represented here). **e** Estimated abundance of select sequence-verified recovered BiTEs. Note that Clones 4 and 5 are extremely rare (~0.001% abundance). The abundance estimation is based on individual clones’ respective counts in the NGS sequences, assuming that these clones are proportionally amplified during the NGS library preparation.





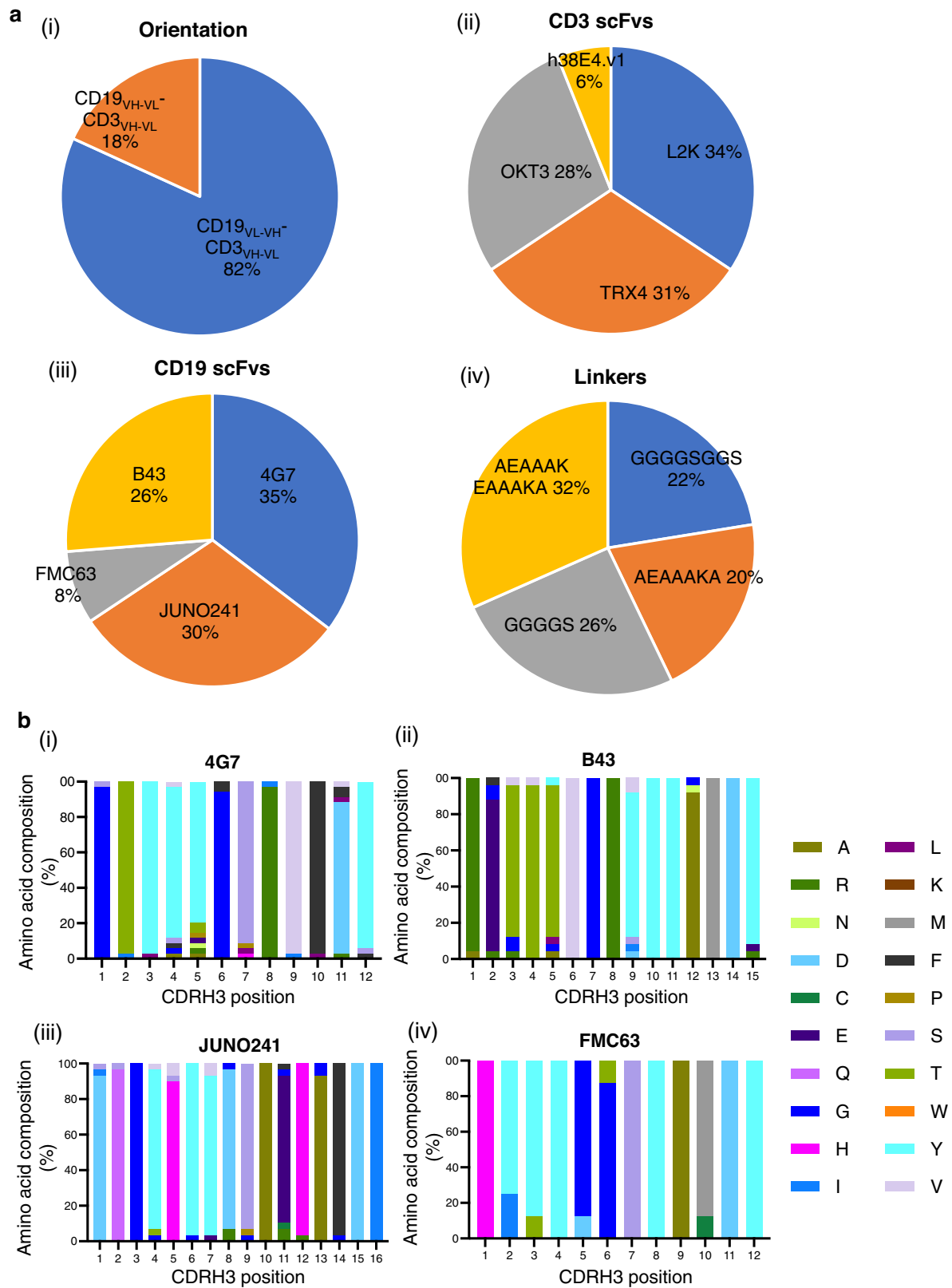
**Fig. 6** Characterization of activity of purified Clone 5 and Clone 6 with primary T cells. **a** Activation profile of CD4+ T cells (assessed by the percentage of double-positive CD69+ CD25+ population) in the presence of Raji cells and purified BiTE clones at varying concentrations. **b** Percentage of PD-1 expressing CD4+ T cells in the presence of Raji cells and purified BiTE clones at varying concentrations. **c** Activation profile of CD8+ T cells (assessed by the percentage of double-positive CD69+ CD25+ population) in the presence of Raji cells and purified BiTE clones at varying concentrations. **d** Percentage PD-1 expressing CD8+ T cells in the presence of Raji cells and purified BiTE clones at varying concentrations. **e** Apoptosis of Raji cells in the presence of pan T cells (E:T = 10:1), isolated from donor PBMCs and purified BiTE clones at different concentrations assessed by Annexin V/7AAD staining of Raji cells. Data are presented as XY plots, and each data point is obtained as a mean of  $n = 3$  replicates (in the case of Clone 5 and Clone 6) for pan T cells isolated from  $n = 1$  donor PBMCs. Mean  $\pm$  SD error bars are plotted for each data point. In the case of Blinatumomab, data is obtained from  $n = 2$  replicates, and error bars are not shown.

agarose gel image of PCR amplified product from cDNA of representative sorted droplets. We then expressed BiTE clones in a 1-mL scale Expi293F culture in a 96-well plate format. Two-hundred sixty-five successfully recovered clones following single-cell PCR and expression were then functionally validated using our reporter cell assay in a conventional bulk format in the presence of Jurkat-ZsG cells and Raji cells (a representative subset of data are shown in Fig. 5d). Using this assay, we confirmed that among the tested 265 clones, 213 clones were true positives (corresponding to true and false positive rates of approximately 80% and 20%, respectively), which were then subject to sequencing and further functional characterization including primary T cell activation and tumor cell killing. In addition to the successful isolation of the Blinatumomab analog BiTE (an internal positive control) from the complex library samples, 98 unique CD19xCD3 BiTE sequences were discovered. For example, two clones (Clones 4 and 5) are very rare ones (each at  $\sim 0.001\%$  abundance) (Fig. 5e). Of note, multiple clones, including representative Clones 1, 2, and 6, contain a rigid linker (AEAAAKA or AEAAAKEAAKA). This is quite a surprise, given the conventional wisdom that a flexible linker is generally preferred at the inter-scFv domain interface<sup>62</sup>. Two representative clones, 4G7<sub>VL-VH</sub>-GGGGS-hu38E4.v1<sub>VH-VL</sub> (Clone 5) and 4G7<sub>VL-VH</sub>-AEAAAKA-L2K<sub>VH-VL</sub> (Clone 6) with a short flexible and a rigid linker, respectively, were further characterized using a primary T cell and Raji coculture assay (Fig. 6a–d) and

functionally validated for tumor killing with an efficiency comparable to recombinant Blinatumomab (Fig. 6e). Clone 6 potentiates similar activation and cytotoxic profile from primary T cells as Blinatumomab. Again, Clone 6 possesses a short, rigid linker (AEAAAKA) which to date has not been reported in functional BiTE sequences (though rigid linkers have been reported in multi-specific DARPin design<sup>63</sup>). These data demonstrate that the high throughput and agnostic nature of our single-cell discovery platform enable efficient isolation of rare functional BsAb clones with unique properties, which would otherwise be impossible using conventional low-throughput, trial-and-error methods.

**Toward design principles for BsAbs.** To elucidate the distribution of design variables (which were well distributed in the initial library, Fig. 2c) in the sorted clones that enabled functionality of BiTE variants, we sequenced functional BiTE clones based on the bulk reporter assay using direct bacterial colony sequencing with BiTE gene-specific primers and discovered 98 unique sequences (plus the spiked Blinatumomab clone). Interestingly, only two relative orientations of CD19 and CD3 scFvs:

(CD19<sub>VL-VH</sub>-CD3<sub>VH-VL</sub> and CD19<sub>VH-VL</sub>-CD3<sub>VH-VL</sub>) were represented in the sorted functional candidates, indicating a specific orientational preference for activity (Fig. 7a). Of note, the clinically approved Blinatumomab employs the (CD19<sub>VL-VH</sub>-CD3<sub>VH-VL</sub>) orientation. It is possible that other



**Fig. 7** Distribution of design parameters in the functionally active BiTE clones sorted using the single cell discovery platform. **a** Distribution of relative orientation of CD19 and CD3 scFvs (i), Distribution of CD3 scFvs (ii), Distribution of CD19 scFvs (iii), and linkers (iv) in the functionally active sorted library. The sequence of 99 functional BiTE clones (98 unique clones+1 Blinatumomab sequence) elucidated by sanger sequencing was used for analyzing the distribution of design parameters. **b** CDRH3 composition of sorted BiTEs having a 4G7 (i), B43(ii), JUNO241 (iii) or FMC63 (iv) aCD19 scFv. CDRH3 compositions for each CD19 scFv type were analyzed from  $n = 34$  4G7 containing BiTEs,  $n = 25$  B43 containing BiTEs,  $n = 29$  JUNO241 containing BiTEs, and  $n = 8$  FMC63 containing BiTEs. Three clones were excluded from the CDRH3 analysis due to sequence ambiguity in the CDRH3 region.

VH–VL relative orientations, including CD19<sub>VL–VH</sub>–CD3<sub>VL–VH</sub> and CD19<sub>VH–VL</sub>–CD3<sub>VL–VH</sub> are structurally unfavorable for binding and/or expression<sup>64,65</sup>. Additionally, we also note the underrepresentation (6–8%) of h38E4.v1 CD3 scFv and FMC63 CD19 scFv in the sorted functional library (Fig. 7a) despite their significant representation in the original library. In particular, we do not see any functional BiTE comprising an h38E4.v1 CD3 scFv and FMC63 CD19 scFv in our sorted functional library, irrespective of orientation or linker type (Supplementary Table 5). The underrepresentation of FMC63 CD19 scFv is particularly surprising in that it is the basis for approved CAR-T therapies<sup>47,60,61</sup>, implying that BiTE and CAR-T employ different MOA even with the same scFv potentially due to differences in expression or folding between soluble protein form in BiTE and cell surface protein form in CAR. Furthermore, the association of underrepresentation of FMC63 CD19 with binding epitope or affinity remains to be determined, as 4G7 CD19 scFv, which shares a similar binding epitope on CD19 as FMC63 and possesses almost 10-fold lower affinity than FMC63<sup>46,47</sup>, is represented at a level of 36% in the functionally sorted library. This observed differential representation could potentially be due to the protein expression efficiency of different molecular formats from host cells (HEK293) in the droplet assay, which will be examined in future work. If true, our single-cell discovery platform could not only screen for functionality but also the “developability” (e.g., efficient expression) of candidate molecules in the same assay, thereby further accelerating downstream drug development. We will be particularly interested in evaluating if such “developability” screening can be applied to other formats of full-length, multi-chain BsAbs (e.g., IgG format) that can produce mispaired molecules. Furthermore, the four linker types used in the library are well distributed in the sorted clones. Again, rigid linkers are equally functional, contrary to previously thought. We also note that functional screening using the single cell discovery platform can identify key conserved residues in the CDRH3 domain necessary to maintain BsAb functions (Fig. 7b). For instance, we identify residues such as Y10 and Y11 on B43 CDRH3 which are not permissive to mutations and critical for the functionality of the BiTE (Fig. 7b). Collectively, these data suggest that our single-cell discovery pipeline that interrogates multiple variables in a combinatorial, high throughput fashion can, for the first time, inform design principles of BsAbs and reveal the relationship between BsAb sequences at single-residue resolution and resulting function.

## Discussion

Immunotherapeutics are currently revolutionizing the treatments of many disorders, including cancer. BsAbs represent one of the fastest-growing sub-sectors in immunotherapy due to their novel modes of action. However, the inefficiency in the current immunotherapeutic discovery paradigm has limited BsAbs’ clinical availability for a broad range of diseases. The conventional trial-and-error approach, in which BsAbs are empirically designed and then must be evaluated individually for their functionality, is generally biased, tedious, time-consuming, and expensive. The single-cell BsAb discovery pipeline reported here differs from conventional microtiter-plate-based methods in its working principles by employing a highly parallel, high throughput, unbiased, single-cell-based screening, which directly interrogates therapeutically relevant functionalities of the candidate molecules. Our platform can accelerate immunotherapeutic pipeline development to potentially make more and better BsAbs quickly available and affordable to patients, enabled by the following superior features compared to conventional methods: (a) Adaptability and scalability: our platform is agnostic, meaning

independent BsAb formats can be directly screened for functionality without the need of prior knowledge of BsAb/antigen binding characteristics; (b) Throughput and screening efficiency: our platform can accommodate millions of individual BsAb clones per run, compared to 10s–100s of clones (manual microtiter-plate handling methods) or 1000s–10,000s of clones (robotics-liquid handling systems) in conventional methods (i.e., 100–1000× increase in throughput); A higher throughput means that one can start with a much bigger library with higher diversity of variants, which therefore increases the success rate in obtaining desired clones, including low-abundance high-quality clones from a large heterogeneous pool; (c) Rapid turnaround: Excluding transitions (e.g., outsourced NGS services), the estimated turnaround for major processes in a BsAb discovery campaign will comprise: (i) library preparation: 5–6 weeks (wks); and in parallel, reporter cell preparation/validation: 3–5 wks; (ii) 1–2× screening runs: 1–2 days; (iii) downstream validation for ≤96 hits: 3–4 wks. The overall process typically takes 8–10 wks to interrogate 10,000s–100,000s of BsAb variants, compared to ≥10–12 wks required for 100s–1000 BsAbs using a sophisticated liquid-handling system. (d) Reduced cost: our single-cell assay is performed in sub-nanoliter droplets and only requires a small sample volume with a significantly lower cost of reagents and biological samples.

Other droplet microfluidic systems<sup>66–70</sup>, microwell assays<sup>71</sup>, optofluidics<sup>72</sup>, and microcapillary arrays<sup>73</sup> have been applied previously for antibody discovery, but they either operate with binding-based assays with a moderate throughput or otherwise focused on other areas of discovery not directly applicable to BsAb. A recent study employed single-cell-based functional screening but required multiple rounds of enrichment<sup>74</sup>, whereas innovations in the single-cell BsAb discovery platform reported here, including single variant library construction via a modular, site-directed landing-pad system, multiplexed orthogonal assay chemistry, and multi-point detection and droplet-indexing strategy enable us to minimize false positives and interrogate large libraries at a much greater depth and lower abundance (0.001%). We have demonstrated that our platform can discover extremely rare clones with unique properties that would otherwise be untractable using conventional low-throughput, biased, and trial-and-error methods. Our reporter assay is used as a “yes or no” assay to enrich functional clones for further downstream characterization. Future work will determine the correlation between reporter signal intensity and potency of the hit molecules; if the reporter assay can quantitatively “rank” the candidates based on their potency, this technology will further improve the discovery efficiency.

Structural and compositional parameters in BsAb design may each affect the BsAb function in a delicate yet integral manner. Our droplet indexing could link functional and phenotypic readouts of individual hits to downstream single-cell genetics (e.g., BsAb sequences). Furthermore, since our single-cell discovery platform can simultaneously interrogate multiple design variables in a combinatorial, high throughput fashion, we can, for the first time, begin to decipher the design principles of BsAbs and obtain an in-depth understanding of the inter-relationships among BsAb sequence structure and function. We acknowledge the analysis of 98 sorted clones in the current proof-of-concept study is insufficient, but the sequence and function relationship can be revealed with additional experiments and a large dataset to be generated in the future. Gaining relevant insight into these inter-relationships would enable us to transform the development of BsAbs and potentially other immunotherapeutics from a trial-and-error process to a rational engineering practice. While this pilot study was only able to characterize two molecules from the positive hits for their effects on T cell activation and tumor

killing, we plan to further investigate more clones of the CD19xCD3 BiTEs discovered from our complex library screening, which can potentially lead to more optimal therapeutic candidates than the Blinatumomab benchmark. We will further interrogate the role and mechanism of rigid linkers, preferred VL/VH orientations, scFv's binding affinity and epitope, conserved residues, and expression efficiency in BiTE functionality. Additional single-cell-based functional assays may further enhance the usefulness of our platform technology, which includes immune cell effector function assays relevant to cytokine secretion, metabolism, and/or tumor killing. Such multi-faceted evaluation can facilitate the development of BsAbs that exhibit optimal therapeutic functions for clinical translation. Our single-cell platform-based BsAb approach represents a unique approach to broadly targeting highly sought-after yet complex and challenging targets such as multi-subunit cell-surface receptors.

## Methods

**Preparation of plasmid library of BiTE variants.** In order to generate a DNA library pool of BiTE variants in an “attB” containing donor plasmid, we first prepared a plasmid DNA sub-library of orientationally switched CD19 and CD3 scFvs (Supplementary Table 1, Supplementary Table 6). Each sub-library candidate was normalized in terminal six residues of the N-terminal and C-terminal portions of both VH and VL domains (Supplementary Table 6). Next, using defined primer pools designed with “NNW” mutations at each CDRH3 position of the CD19 scFvs, we prepared CDRH3 variants of each sub-library candidate in the CD19 scFv sub-library pool (CD19-NNW-sublibrary). Primer sequences encoding for NNW mutations in each residue of CDRH3 of CD19 scFvs are shown in Supplementary Table 7. We next prepared a base plasmid vector which had a multiple cloning site (MCS) consisting of EcoRI and KpnI restriction sites sandwiched between a signal sequence (5′ – ATGGGCTGGTCCATCATCC TGTTCCTGGTGGCCACAGCCACAGCGCCTATGCT – 3′) and histag-2A sequence (5′ – CACCACCACCATCCATGCCACGCAACTTCTCTCTGTTAAAGCAAGCAGGA GACGTGGAAGAAAACCCCGTCTCT – 3′). The base plasmid vector additionally had a HindIII restriction enzyme recognition site upstream of the signal sequence and a BamHI recognition site downstream of histag-2A sequence, to allow for extraction of full BiTE expression cassette (signal sequence-BiTE gene-histag-2A). Using a panel of 16 ssOligos (linker oligos) to encode for the four-member linker library (Supplementary Table 3, Supplementary Table 8) with appropriate annealing ends to accommodate all the four possible relative orientations of CD19 and CD3 scFvs and four additional oligos annealing to the normalized N-terminal and C-terminal residues of VH or VL domains, we PCR amplified the CD3 variants from CD3-scFv-sublibrary as well as CD19 variants from the CD19-NNW-scFv sublibrary. Primers used for PCR of CD19 variants from the CD19-NNW-scFv sublibrary and PCR of CD3 variants from CD3-scFv-sublibrary are shown in Supplementary Table 8. After gel purification and quantification, the PCR products were mixed in equimolar ratios and assembled into the linearized base plasmid vector described above using an in-house Gibson mastermix. Specifically, 100 ng of PCR fragments were assembled with 250 ng of linearized plasmid vector (EcoRI/KpnI digested base plasmid vector) in 200 μL Gibson reaction, transformed in 220 μL of DH5α competent cells, and recovered in 1 mL SOC media for 1 hr without selection. The 1 mL recovered cultures were scaled up to 30 mL TB media with 100 μg/ml Ampicillin. DNA extracted from the 30 mL culture was digested with HindIII-HF (#R3104S, New England Biolabs) and BamHI-HF (#R3136S, New England Biolabs), and full-length BiTE fragments (~1.6 kb) were extracted using agarose gel extraction. The gel-purified full-length BiTE fragments were then assembled into a promoterless “attB” donor plasmid. The promoterless “attB” donor plasmid contained the signal Sequence- (EcoRI/KpnI) MCS-histag-2A-Puromycin cassette downstream of the “attB” attachment site. Linearization of promoterless donor plasmid with EcoRI/KpnI restriction enzymes allowed for Gibson assembly of gel purified BiTE fragments in-frame with a signal sequence and downstream Puromycin sequence. Additionally, we also prepared a Blinatumomab BiTE encoding “attB” donor plasmid vector using B43 encoding CD19 sublibrary plasmid, L2K sequence encoding CD3 plasmid and a ssOligo encoding a short “GGGGS” linker and annealing ends to VH-Cterm and VL-Nterm. The sequence of Blinatumomab used is shown in Supplementary Table 6.

## Engineering HEK293 landing pad cell lines with cell surface expression of

**CD19.** We obtained HEK293 cell lines integrated with a single copy of “attB” attachment site specific to BxB1 recombinase (HEK\_LP) from Applied Stem Cell (#AST-1305, Applied Stem Cell). We co-transfected our in-house generated Cas9(pCas9) expression plasmid and gRNA plasmid (pGRNA) (specific for integration into Chr 1 locus) with CD19 expression plasmid containing a CAG promoter (pCD19) into the HEK293\_LP cell lines. The mass ratio of the plasmids was maintained at 0.33:0.66:1 (pCas9: pGRNA: pCD19). The transfections were done using Fugene® HD transfection reagent using standard manufacturers protocol.

Specifically, 2 μg total DNA was transfected into 1 × 10<sup>6</sup> million HEK293\_LP cells. Cells were selected using hygromycin, and the stable population was sorted on our single-cell platform for CD19 expression levels by staining transfected cells with AlexaFluor® 647 anti-CD19 antibody (#302222, Biologend). Cells were sorted for different expression levels of CD19, and clonal cell lines with expression levels comparable to that of standard CD19 positive cell lines, such as Raji, NALM-6, and SUDH, were chosen for downstream experiments. These cells are referred to as HEK293\_LP<sup>CD19</sup>.

**Integration of BiTE library into HEK293\_LP<sup>CD19</sup> cells.** Totally, 3 × 10<sup>6</sup> HEK293\_LP<sup>CD19</sup> cells were transfected with 60 μg BxB1 recombinase expression plasmid (#AST 3201, Applied Stem Cell) and BiTE gene integrated “attB” donor plasmid library described above, in the ratio 1:3. Transfection was carried out with using Xfect transfection reagent (#631318, Takara Bio) as per manufacturer's protocol. After transfection, the BiTE integrated cells were enriched with selection with 1 μg/ml Puromycin for 48 h and were used for downstream droplet sorting and screening or bulk assay.

**Integration of Blinatumomab into HEK293\_LP<sup>CD19</sup>.** Totally, 3 × 10<sup>5</sup> HEK293\_LP<sup>CD19</sup> cells were transfected with 2.5 μg BxB1 recombinase expression plasmid (#AST 3201, Applied Stem Cell) and Blinatumomab gene integrated “attB” donor plasmid in the ratio 1:3. The transfection was carried out with using Xfect transfection reagent (#631318, Takara Bio) as per manufacturer's protocol. After transfection, the Blinatumomab integrated cells were enriched with selection with 1 μg/ml Puromycin for 48 h and was used for downstream droplet sorting and screening or bulk assay.

## Analysis of diversity of BiTE variants integrated in HEK293\_LP<sup>CD19</sup> cells.

Genomic DNA was extracted from 3 × 10<sup>6</sup> HEK293\_LP<sup>CD19</sup>/BiTE cells using Quick-DNA midprep kit (#D4075, Zymo Research). Gene-specific primers annealing to the signal sequence (5′ – CTGGCTGCATCATCTGTTC – 3′) and P2A sequence (5′ – GTTAAAGCAAGCAGGAGACGTGG – 3′) were used to amplify BiTE variants from the genomic DNA. The amplification was carried out with 500 ng of template genomic DNA (corresponding to a gene copy number of 145,000) with an annealing temperature of 69 °C and extension time of 1 min 30 s, using NEB Q5 High-Fidelity DNA Polymerase (#MO491, New England Biolabs Inc.). The genomic region containing integrated BiTE sequences amplified by PCR was gel purified and analyzed by long-read amplicon sequencing (PacBio, SMRT). The circular consensus reads (~3 million CCS reads) from long-read amplicon sequencing was parsed for gene sequences containing both N-terminal signal sequence and C-terminal his-tag sandwiching the BiTE region using bioinformatics services provided by vendor FornaxBio (Worcester, MA). These gene sequences were translated and analyzed for unique and duplicated sequences. The unique BiTE sequences were additionally sorted by linker type, VH-VL orientation of CD19 and CD3 scFvs, and representation of scFv candidates. The sequence analysis was carried out using scripts generated in R using standard library packages (*stringr*, *Biostrings*).

## Droplet encapsulation of Jurkat reporter cells and HEK293\_LP<sup>CD19</sup>/BiTE cells and sorting.

For droplet encapsulation, we used a standard Poisson distribution ( $P_{\lambda,k} = \frac{e^{-\lambda} \lambda^k}{k!}$ ) where  $\lambda$  is the mean number of cells in a droplet,  $k$  is the number of cells in the droplets and  $P_{\lambda,k}$  is the probability that a droplet contains  $k$  cells, to model the distribution of cells in droplets. The concentration of cells is calculated based on the  $\lambda$  needed and average size of droplets (77 μm). We conducted two screening runs on our platform. One sample containing Jurkat-ZsG and Jurkat-E2C reporter cells was mixed in a 1:1 ratio ( $\lambda = 3$ ) with the other sample containing HEK293\_LP<sup>CD19</sup>/BiTE library cells ( $\lambda = 0.3$ ) were dispersed into droplets by an immiscible carrier oil using a flow-focusing droplet generator (fabricated in a cleanroom facility at UC Irvine). The carrier oil was Novex HFE7500 fluorinated oil (3 M) containing 2% (wt/wt) 008-FluoroSurfactant (Ran Biotechnologies). The HEK\_LP<sup>CD19</sup>/BiTE cells were prestained with CellTrace™ Violet (#C34571, ThermoFisher Scientific) as per the manufacturer's protocol. The flow rates were adjusted to generate droplets with a diameter of about 77 μm. Droplets were collected into a capped syringe and incubated at 37 °C for 6 h. After incubation, droplets were reinjected into another microfluidic chip for detecting and sorting on the single-cell platform. The single-cell platform includes four lasers of wavelength 405, 488, 561, and 638 nm at the first point of detection and two lasers of wavelength 488 and 638 nm at the second point of detection. Droplet fluorescent signals were detected using photomultiplier tubes. The sorting algorithm was programmed by LabVIEW. When a droplet passed the thresholds, a high voltage was triggered to pull the droplet into the sorting channel. The sorted droplet moved downstream toward the second point of detection for double confirmation of the fluorescent signals. When the sorted droplet passed the thresholds at the second point of detection, a dispensing module was triggered to dispense the single sorted droplet into a PCR tube. The peak profiles of each target droplet detected from PMTs are matched with the PCR tube number containing the target droplet so that the peak profiles can be manually reviewed to decide whether to perform downstream analysis, i.e., single-cell PCR or not. This droplet indexing method further reduces



8. Lee, D. et al. Simultaneous blockade of VEGF and Dll4 by HD105, a bispecific antibody, inhibits tumor progression and angiogenesis. *mAbs* **8**, 892–904 (2016).
9. Kaplon, H. et al. Antibodies to watch in 2023. *mAbs* **15**, e2153410 (2023).
10. Clynes, R. A. & Desjarlais, J. R. Redirected T cell cytotoxicity in cancer therapy. *Annu. Rev. Med.* **2019** **70**, 437–450 (2019).
11. Sampei, Z. et al. Identification and multidimensional optimization of an asymmetric bispecific IgG antibody mimicking the function of factor VIII cofactor activity. *PLoS ONE* **8**, e57479 (2013).
12. Krahl, S. et al. Engineering bispecific antibodies with defined chain pairing. *N. Biotechnol.* **39**, 167–173 (2017).
13. Eigenbrot, C. & Fuh, G. Two-in-One antibodies with dual action Fabs. *Curr. Opin. Chem. Biol.* **17**, 400–405 (2013).
14. Segal, D. M. et al. Cytokine release by peripheral blood lymphocytes targeted with bispecific antibodies, and its role in blocking tumor growth. *Ann. N. Y. Acad. Sci.* **636**, 288–294 (1991).
15. Jackman, J. et al. Development of a two-part strategy to identify a therapeutic human bispecific antibody that inhibits IgE receptor signaling. *J. Biol. Chem.* **285**, 20850–20859 (2010).
16. Weiner, L., Alpaugh, R. & von Mehren, M. Redirected cellular cytotoxicity employing bispecific antibodies and other multifunctional binding proteins. *Cancer Immunol. Immunother.* **45**, 190–192 (1997).
17. Linke, R., Klein, A. & Seimetz, D. Catumaxomab: clinical development and future directions. *mAbs* **2**, 129–136 (2010).
18. Klein, C. et al. Progress in overcoming the chain association issue in bispecific heterodimeric IgG antibodies. *mAbs* **4**, 653–663 (2012).
19. Asano, R. et al. Domain order of a bispecific diabody dramatically enhances its antitumor activity beyond structural format conversion: the case of the hEx3 diabody. *Protein Eng. Des. Sel.* **26**, 359–367 (2013).
20. Nuñez-Prado, N. et al. The coming of age of engineered multivalent antibodies. *Drug Discov. Today* **20**, 588–594 (2015).
21. Stieglmaier, J., Benjamin, J. & Nagorsen, D. Utilizing the BiTE (bispecific T-cell engager) platform for immunotherapy of cancer. *Expert. Opin. Biol. Ther.* **15**, 1093–1099 (2015).
22. Sugiyama, A. et al. A semi high-throughput method for screening small bispecific antibodies with high cytotoxicity. *Sci. Rep.* **7**, 2862 (2017).
23. Dengli, S. et al. Format chain exchange (FORCE) for high-throughput generation bispecific antibodies in combinatorial binder-format matrices. *Nat. Commun.* **11**, 4974 (2020).
24. Li, J. et al. Membrane-proximal epitope facilitates efficient T cell synapse formation by anti-FcRH5/CD3 and is a requirement for myeloma cell killing. *Cancer Cell* **31**, 383–395 (2017).
25. James, S. E. et al. Antigen sensitivity of CD22-specific chimeric TCR is modulated by target epitope distance from the cell membrane. *J. Immunol.* **180**, 7028–7038 (2008).
26. Root, A. et al. Development of PF-06671008, a highly potent anti-P-cadherin/anti-CD3 bispecific DART molecule with extended half-life for the treatment of cancer. *Antibodies* **5**, 6 (2016).
27. Bluemel, C. et al. Epitope distance to the target cell membrane and antigen size determine the potency of T cell-mediated lysis by BiTE antibodies specific for a large melanoma surface antigen. *Cancer Immunol. Immunother.* **59**, 1197–1209 (2010).
28. Qi, J. et al. Potent and selective antitumor activity of a T cell-engaging bispecific antibody targeting a membrane-proximal epitope of ROR1. *Proc. Natl Acad. Sci. USA* **115**, E5467–E5476 (2018).
29. Ma, J. S. et al. Versatile strategy for controlling the specificity and activity of engineered T cells. *Proc. Natl Acad. Sci. USA* **113**, E450–E458 (2016).
30. Goebeler, M. E. et al. Bispecific T-cell engager (BiTE) antibody construct Blinatumomab for the treatment of Patients with relapsed/refractory non-Hodgkin lymphoma: Final results from a phase I study. *J. Clin. Oncol.* **34**, 1104–1111 (2016).
31. Moore, G. L. et al. A novel bispecific antibody format enables simultaneous bivalent and monovalent co-engagement of distinct target antigens. *mAbs* **3**, 546–57 (2011).
32. Moore, G. L. et al. Tuning T cell affinity improves efficacy and safety of Anti-CD38 × Anti-CD3 bispecific antibodies in monkeys—a potential therapy for multiple myeloma. *Blood* **126**, 1798–1798 (2015).
33. Bacac, M. et al. CD20 Tcb (RG6026), a Novel “2:1” T cell bispecific antibody for the treatment of B cell malignancies. *Blood* **128**, 1836–1836 (2016).
34. Ahmed, M. et al. TCR-mimic bispecific antibodies targeting LMP2A show potent activity against EBV malignancies. *JCI Insight* **3**, e97805 (2018).
35. Mandikian, D. et al. Relative target affinities of T-cell-dependent bispecific antibodies determine biodistribution in a solid tumor mouse model. *Mol. Cancer Ther.* **17**, 776–785 (2018).
36. Mølhøj, M. et al. CD19-/CD3-bispecific antibody of the BiTE class is far superior to tandem diabody with respect to redirected tumor cell lysis. *Mol. Immunol.* **44**, 1935–1943 (2007).
37. Reusch, U. et al. A tetravalent bispecific TandAb (CD19/CD3), AFM11, efficiently recruits T cells for the potent lysis of CD19+ tumor cells. *mAbs* **7**, 584–604 (2015).
38. Dushkek, O. et al. Antigen potency and maximal efficacy reveal a mechanism of efficient T cell activation. *Sci. Signal* **44**, ra39 (2011).
39. Moore, P. A. et al. Application of dual affinity retargeting molecules to achieve optimal redirected T-cell killing of B-cell lymphoma. *Blood* **117**, 4542–4551 (2011).
40. Hoseini, S. S., Guo, H., Wu, Z., Hatano, M. N. & Cheung, N. K. V. A potent tetravalent T-cell-engaging bispecific antibody against CD33 in acute myeloid leukemia. *Blood Adv.* **2**, 1250–1258 (2018).
41. Ellerman, D. Bispecific T-cell engagers: towards understanding variables influencing the in vitro potency and tumor selectivity and their modulation to enhance their efficacy and safety. *Methods* **154**, 102–117 (2019).
42. Dickopf, S., Georges, G. J. & Brinkmann, U. Format and geometries matter: structure based design defines the functionality of bispecific antibodies. *Comput. Struct. Biotechnol. J.* **18**, 1221–1227 (2020).
43. Dreier, T. et al. Extremely potent, rapid and costimulation-independent cytotoxic T-cell response against lymphoma cells catalyzed by a single-chain bispecific antibody. *Int. J. Cancer* **100**, 690–697 (2002).
44. Teplyakov, A., Obmolova, G., Luo, J. & Gilliland, G. L. Crystal structure of B-cell co-receptor CD19 in complex with antibody B43 reveals an unexpected fold. *Proteins* **86**, 495–500 (2018).
45. Klesmith, J. R., Wu, L., Lobb, R. R., Rennert, P. D. & Hackel, B. J. Fine epitope mapping of the CD19 extracellular domain promotes design. *Biochemistry* **58**, 4869–4881 (2019).
46. Kügler, M. et al. Stabilization and humanization of a single-chain Fv antibody fragment specific for human lymphocyte antigen CD19 by designed point mutations and CDR-grafting onto a human framework. *Protein Eng. Des. Sel.* **22**, 135–147 (2009).
47. Ghorashian, S. et al. Enhanced CAR T cell expansion and prolonged persistence in pediatric patients with ALL treated with a low-affinity CD19 CAR. *Nat. Med.* **25**, 1408–1414 (2019).
48. Meeker, T. C. et al. A unique human B lymphocyte antigen defined by a monoclonal antibody. *Hybridoma* **3**, 305–320 (1984).
49. Chen, Y. et al. Antibodies and chimeric antigen receptors specific for CD19. Patent WO 2016/033570 A1 (2016).
50. Amann, M. et al. Therapeutic window of MuS110, a single-chain antibody construct bispecific for murine EpCAM and murine CD3. *Cancer Res.* **68**, 143–151 (2008).
51. Chen, B. M. et al. The affinity of elongated membrane-tethered ligands determines potency of T cell receptor triggering. *Front. Immunol.* **8**, 793 (2017).
52. Kuhn, C. & Weiner, H. L. CD3 antibodies. *Immunotherapy* **8**, 889–906 (2016).
53. Page, K. R. et al. Temporal pharmacokinetic/pharmacodynamic interaction between human CD3ε antigen-targeted monoclonal antibody otilixizumab and CD3ε binding and expression in human peripheral blood mononuclear cell static culture. *J. Pharmacol.* **355**, 199–205 (2015).
54. Chen, X. et al. Anti-CD3 antibodies and Methods of use. Patent WO 2015/095392 A1 (2016).
55. Chen, X., Zaro, J. L. & Shen, W. C. Fusion protein linkers: property, design and functionality. *Adv. Drug Deliv. Rev.* **65**, 1357–1369 (2013).
56. Arai, R., Ueda, H., Kitayama, A., Kamiya, N. & Nagamune, T. Design of the linkers which effectively separate domains of a bifunctional fusion protein. *Protein Eng.* **14**, 529–532 (2001).
57. Abate, A. R., Chen, C. H., Agresti, J. J. & Weitz, D. A. Beating Poisson encapsulation statistics using close-packed ordering. *Lab Chip* **9**, 2628–2631 (2009).
58. Chi, X., Zheng, Q., Jiang, R., Chen-Tsai, R. Y. & Kong, L. J. A system for site-specific integration of transgenes in mammalian cells. *PLoS ONE* **14**, e0219842 (2019).
59. Sadelain, M., Papapetrou, E. P. & Bushman, F. D. Safe harbours for the integration of new DNA in the human genome. *Nat. Rev. Cancer* **12**, 51–58 (2012).
60. Segaliny, A. I. et al. Functional TCR T cell screening using single-cell droplet microfluidics. *Lab Chip* **18**, 3733–3749 (2018).
61. Pipkin, M. E., Rao, A. & Lichtenheld, M. G. The transcriptional control of the perforin locus. *Immunol. Rev.* **235**, 55–72 (2010).
62. Wolf, E., Hofmeister, R., Kufer, P., Schlereth, B. & Baeuerle, P. A. BiTEs: bispecific antibody constructs with unique anti-tumor activity. *Drug Discov. Today* **10**, 1237–1244 (2005).
63. Wu, Y. et al. Rigidly connected multispecific artificial binders with adjustable geometries. *Sci. Rep.* **7**, 11217 (2017).
64. Stamova, S. et al. Unexpected recombinations in single chain bispecific anti-CD3-anti-CD33 antibodies can be avoided by a novel linker module. *Mol. Immunol.* **49**, 474–482 (2011).
65. Lu, D., Jimenez, X., Witte, L. & Zhu, Z. The effect of variable domain orientation and arrangement on the antigen-binding activity of a recombinant

- human bispecific diabody. *Biochem. Biophys. Res. Commun.* **318**, 507–513 (2004).
66. Ding, R. et al. Rapid isolation of antigen-specific B-cells using droplet microfluidics. *RSC Adv.* **10**, 27006–27013 (2020).
  67. Guo, M. T., Rotem, A., Heyman, J. A. & Weitz, D. A. Droplet microfluidics for high-throughput biological assays. *Lab Chip* **12**, 2146–2155 (2012).
  68. Shembekar, N., Hu, H., Eustace, D. & Merten, C. A. Single-cell droplet microfluidic screening for antibodies specifically binding to target cells. *Cell Rep.* **22**, 2206–2215 (2018).
  69. Mazutis, L. et al. Single-cell analysis and sorting using droplet-based microfluidics. *Nat. Prot.* **8**, 870–891 (2013).
  70. Gérard, A. et al. High-throughput single-cell activity-based screening and sequencing of antibodies using droplet microfluidics. *Nat. Biotechnol.* **38**, 715–721 (2020).
  71. Kiguchi, Y. et al. Clonal array profiling of scFv-displaying phages for high-throughput discovery of affinity-matured antibody mutants. *Sci. Rep.* **10**, 14103 (2020).
  72. Winters, A. et al. Rapid single B cell antibody discovery using nanopens and structured light. *mAbs* **11**, 1025–1035 (2019).
  73. Chen, B. et al. High-throughput analysis and protein engineering using microcapillary arrays. *Nat. Chem. Biol.* **12**, 76–81 (2016).
  74. Wang, Y. et al. High-throughput functional screening for next-generation cancer immunotherapy using droplet-based microfluidics. *Sci. Adv.* **7**, eabe3839 (2021).

### Acknowledgements

This work is supported by NSF/SBIR grants (#1913404 and #2051931). We acknowledge Dr. Melanie Oaks (UCI Genomics High Throughput facility) for helpful discussions on processing NGS sequencing data.

### Author contributions

A.S., Y.S., G.W., and W.Z. designed the study. X.C., P.N.H., J.C., and Q.F. developed the droplet microfluidic system. Y.S., G.W., A.S., J.Z., and J.J. designed the CD19xCD3 BiTE library. J.J., J.Z., and X.J. generated the DNA library; J.J. and A.S. engineered the mammalian cell library, CD19+, and Blinatumomab+ cells. J.C., A.F., X.C., and A.S. performed the spiking experiments. J.C., A.F., X.C., Q.F., and A.S. performed the library screening experiment. R.L. and J.J. did the downstream analysis (scPCR, DNA recovery, and assembly for expression, sequence analysis, small-scale expression). J.J. and A.S. ran the functional validations of sorted clones, and J.J. did the sequence analysis. A.F. and

R.R. expressed and purified the BiTEs. A.S., X.M., and C.R. did the primary T-cell assays for sorted BiTE validation. A.S., J.J., X.C., G.W., and W.Z. analyzed the data and wrote the paper.

### Competing interests

W.Z. is a cofounder of Amberstone Biosciences, Inc., and a cofounder and officer of Aureka Biotechnologies, Inc. The remaining authors declare no competing interests.

### Additional information

**Supplementary information** The online version contains supplementary material available at <https://doi.org/10.1038/s42003-023-04746-w>.

**Correspondence** and requests for materials should be addressed to George Wu or Weian Zhao.

**Peer review information** *Communications Biology* thanks the anonymous reviewers for their contribution to the peer review of this work. Primary Handling Editor: Anam Akhtar.

**Reprints and permission information** is available at <http://www.nature.com/reprints>

**Publisher's note** Springer Nature remains neutral with regard to jurisdictional claims in published maps and institutional affiliations.



**Open Access** This article is licensed under a Creative Commons Attribution 4.0 International License, which permits use, sharing, adaptation, distribution and reproduction in any medium or format, as long as you give appropriate credit to the original author(s) and the source, provide a link to the Creative Commons license, and indicate if changes were made. The images or other third party material in this article are included in the article's Creative Commons license, unless indicated otherwise in a credit line to the material. If material is not included in the article's Creative Commons license and your intended use is not permitted by statutory regulation or exceeds the permitted use, you will need to obtain permission directly from the copyright holder. To view a copy of this license, visit <http://creativecommons.org/licenses/by/4.0/>.

© The Author(s) 2023