

UCLA

Presentations

Title

Data, data, everywhere: How many drops to drink? Symposium panel on Scholarly Communication: Changes, Challenges, & Initiatives

Permalink

<https://escholarship.org/uc/item/8ft4b25n>

Author

Borgman, Christine L.

Publication Date

2011

Copyright Information

This work is made available under the terms of a Creative Commons Attribution-NonCommercial-NoDerivatives License, available at <https://creativecommons.org/licenses/by-nc-nd/4.0/>

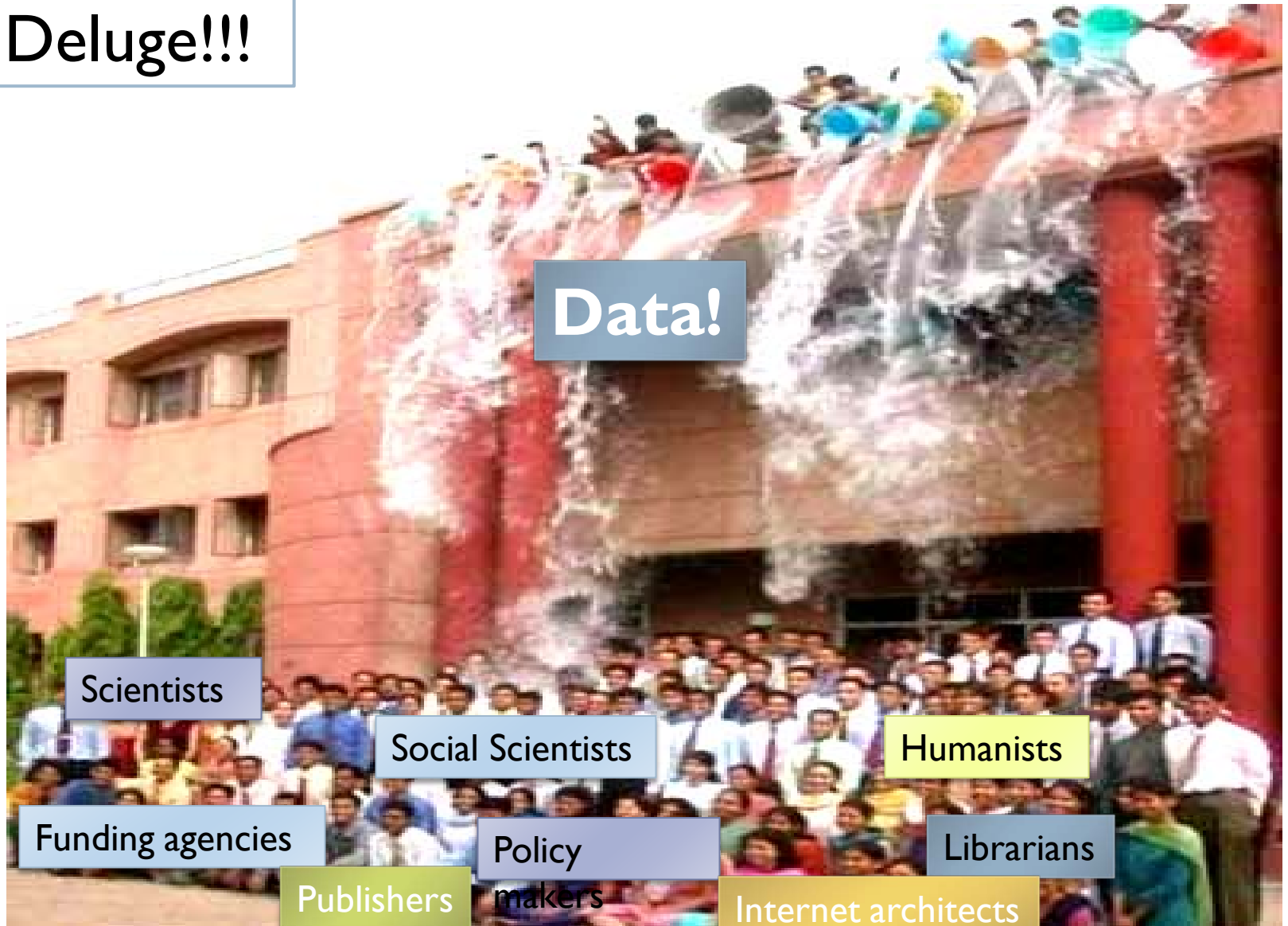
**Scholarly Communication:
Changes, Challenges, & Initiatives
Symposium panel**

**Data, data, everywhere:
How many drops to drink?***

Christine L. Borgman, UCLA

Samuel Taylor Coleridge, *The Rime of the Ancient Mariner**

Deluge!!!



Infrastructure for digital objects

- ▶ **Social practice**
- ▶ **Usability**
- ▶ Identity
- ▶ Persistence
- ▶ Discoverability
- ▶ Provenance
- ▶ Relationships
- ▶ **Intellectual property**
- ▶ **Policy**



http://datalib.ed.ac.uk/GRAPHICS/blue_data.gif

Social practice for research data

- ▶ **Why cite data?**
 - ▶ Reproduce research
 - ▶ Replicate findings
 - ▶ Reuse data
- ▶ **Why attribute data?**
 - ▶ Social expectation
 - ▶ Legal responsibility
- ▶ **How to cite data?**
 - ▶ Bibliographic reference
 - ▶ Identifier
 - ▶ Link



http://farm2.static.flickr.com/1207/707625876_46aa44851f_o.jpg

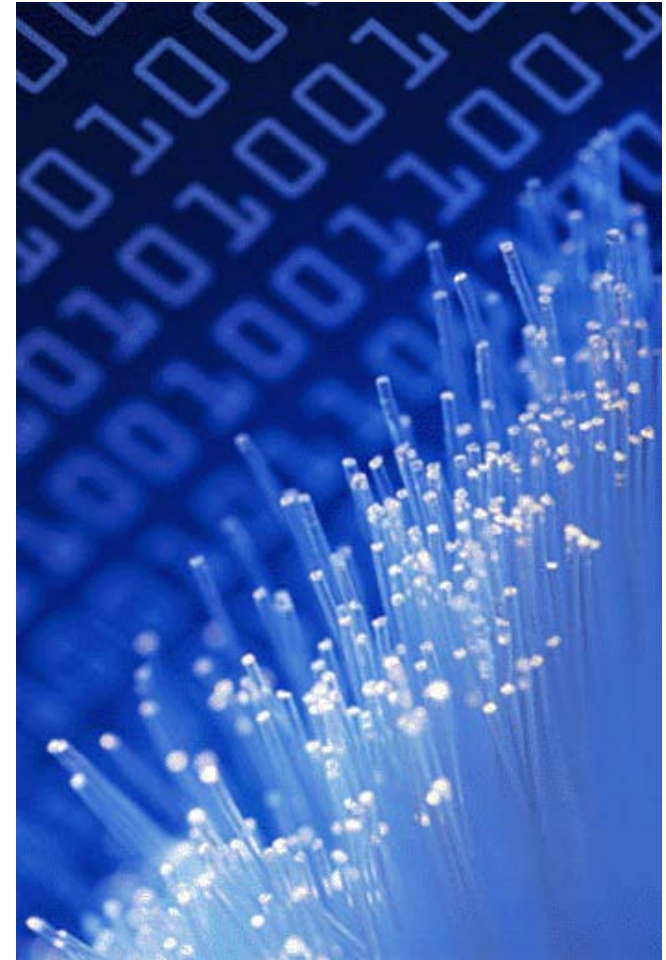
Usability of cited objects

- ▶ Identify the form and content
- ▶ Interpret
- ▶ Evaluate
- ▶ Open
- ▶ Read
- ▶ Compute upon
- ▶ Reuse
- ▶ Combine
- ▶ Describe
- ▶ Annotate...



Intellectual property

- ▶ What can I do with this object?
- ▶ What rights are associated?
 - ▶ Reuse
 - ▶ Reproduce
 - ▶ Attribute
- ▶ Who owns the rights?
- ▶ How open are data?
 - ▶ Open data
 - ▶ Open bibliography



http://datalib.ed.ac.uk/GRAPHICS/blue_data.gif

Policy for digital objects

▶ Whose policy?

- ▶ Funding agencies
- ▶ Publishers
- ▶ Data repositories
- ▶ Universities
- ▶ Investigators...

▶ Types of policy

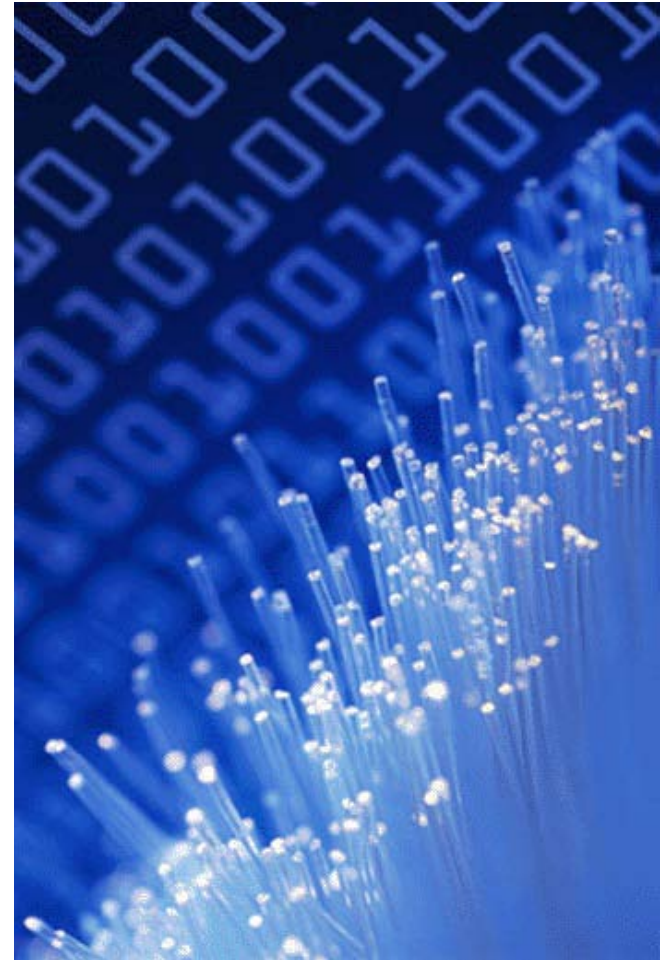
- ▶ What to release
- ▶ What description
- ▶ What citation
- ▶ What attribution
- ▶ Who can describe, annotate...



<http://www.dlorg.eu/index.php/publications/ec-policy/ec-publications-policy>

Infrastructure for digital objects

- ▶ Social practice
- ▶ Usability
- ▶ Identity
- ▶ Persistence
- ▶ Discoverability
- ▶ Provenance
- ▶ Relationships
- ▶ Intellectual property
- ▶ Policy



http://datalib.ed.ac.uk/GRAPHICS/blue_data.gif

For more on this topic

- ▶ **Developing Data Attribution and Citation Practices and Standards: An International Symposium and Workshop, Berkeley, CA,**
 - ▶ US CODATA and the Board on Research Data and Information, in collaboration with CODATA-ICSTI Task Group on Data Citation Standards and Practices
 - ▶ http://sites.nationalacademies.org/PGA/brdi/PGA_064019
 - ▶ Borgman, C. L. (2011). Why are the attribution and citation of scientific data important? (keynote).

