

UC Berkeley

UC Berkeley Previously Published Works

Title

The enduring legacy of Marie Curie: impacts of radium in 21st century radiological and medical sciences

Permalink

<https://escholarship.org/uc/item/8hj368c7>

Journal

International Journal of Radiation Biology, 98(3)

ISSN

0955-3002

Authors

Abergel, Rebecca
Aris, John
Bolch, Wesley E
et al.

Publication Date

2022-03-04

DOI

10.1080/09553002.2022.2027542

Peer reviewed



Published in final edited form as:

Int J Radiat Biol. 2022 ; 98(3): 267–275. doi:10.1080/09553002.2022.2027542.

The Enduring Legacy of Marie Curie: Impacts of Radium in 21st Century Radiological and Medical Sciences

Rebecca Abergel¹, John Aris², Wesley E. Bolch², Shaheen A. Dewji³, Ashley Golden⁴, David A. Hooper⁵, Dmitri Margot³, Carly G. Menker⁶, Tatjana Paunesku⁶, Dörthe Schae⁷, Gayle E. Woloschak^{6,*}

¹Nuclear Engineering Department, University of California, Berkeley; Chemical Sciences Division, Lawrence Berkeley National Laboratory, Berkeley, California, USA

²J. Crayton Pruitt Family Department of Biomedical Engineering, Herbert Wertheim College of Engineering, University of Florida, Gainesville, Florida, USA

³Nuclear and Radiological Engineering and Medical Physics Programs, George W. Woodruff School of Mechanical Engineering, Georgia Institute of Technology, Atlanta, Georgia, USA

⁴Oak Ridge Associated Universities, Oak Ridge, Tennessee, USA

⁵Nuclear Nonproliferation Division, Oak Ridge National Laboratory, Oak Ridge, Tennessee, USA

⁶Departments of Radiation Oncology, Radiology, and Cell and Molecular Biology, Robert H. Lurie Comprehensive Cancer Center, Feinberg School of Medicine, Northwestern University, Chicago, Illinois, USA

⁷Department of Radiation Oncology, David Geffen School of Medicine, University of California at Los Angeles, Los Angeles, California, USA

Abstract

Purpose: This review is focused on radium and radionuclides in its decay chain in honor of Marie Curie, who discovered this element.

Materials and methods: We conglomerated current knowledge regarding radium and its history predating our present understanding of this radionuclide.

Results: An overview of the properties of radium and its dose assessment is shown followed by discussions about both the negative detrimental and positive therapeutic applications of radium with this history and its evolution reflecting current innovations in medical science.

Conclusions: We hope to remind all those who are interested in the progress of science about the vagaries of the process of scientific discovery. In addition, we raise the interesting question of whether Marie Curie's initial success was in part possible due to her tight alignment with her husband Pierre Curie who pushed the work along.

*Corresponding Author: g-woloschak@northwestern.edu.

Declaration of Interest

For this study, there is no indicated conflict of interest.

Keywords

radionuclides; radium; radon; risk

1. Discoverer of Radium

Many detailed and authoritative books have been written about Marie Curie whose remarkable life can be viewed from many perspectives. Polish-born and French naturalized, Curie was: (1) the first woman to earn a doctorate in France, (2) the first woman to receive a Nobel Prize (Physics, 1903, shared between Henri Becquerel, and Marie and her husband, Pierre Curie, “in recognition of the extraordinary services they have rendered by their joint research on the radiation phenomena discovered by Professor Henri Becquerel” (Physics 1903) (3) the only woman to win two Nobel Prizes in science (Chemistry, 2011, won on her own “in recognition of her services to the advancement of chemistry by the discovery of the elements radium and polonium, by the isolation of radium and the study of the nature and compounds of this remarkable element” (Chemistry 1911) (4) the only person (man or woman) to win two Nobel Prizes in different fields (1903 for Physics and 1911 for Chemistry), (5) the first person to coin the term ‘radioactivity,’ (6) the first to invent isotope separation techniques, (7) the person to discover the elements polonium and radium, (8) the first and only female member of the seven International Solvay Physics conferences organized from 1911 to 1933 which gathered the most renowned physicists and chemists of the day, (9) the first person to demonstrate the utility of radiation in the treatment of cancer, (10) the first person to head the Red Cross Radiology Service and to develop mobile X-ray and radiation therapy units for World War I military medical use (using her own personal supply of radium to do so), (11) the person who founded the Curie Institute in both France and Poland, (12) the person who wrote her late husband’s biography, (13) a person who served on the International Atomic Weights Committee, and (14) a person who raised a Nobel-winning daughter (Irène Joliot-Curie, Chemistry, 1935).

Her lifelong journey with radium (among other radioactive materials) began with Henri Becquerel’s discovery of natural radiation in 1896. Inspired to further investigate pitchblende – a uranium source that was found to be more radioactive than uranium itself – they eventually discovered and isolated both radium and polonium as sources of the excess radioactivity. Her 1903 PhD thesis, *Recherches sur les substances radioactives* ((Curie 1903); (Curie 1961); (Wolke 1988)), secured her share of the Nobel Prize *in the same year* and struck a death blow to the concept of the atom as indivisible. If there were questions about the Nobel worthiness of a PhD candidate, they were erased in 1911 when she was the sole winner of the Nobel Prize in Chemistry for the discovery of radium and polonium and isolation of radium.

In 1898, Marie and Pierre Curie discovered radium, although the experiments were done by both examining radium chloride ore mined from the spa town of Jáchymov (which at that time was called Joachimsthal) in today’s Czech Republic (for more information, see below). While both were credited with the discovery Marie actually did the experiments that led to the finding, while Pierre added his own interpretation to the results. In 1911, Marie

followed up on this finding with electrolysis of radium chloride performed in collaboration with André-Louis Debierne for the final isolation of radium itself.

During the first World War, Marie designed mobile X-ray stations for field diagnosis of injuries, donating her own effort to obtain funding and train imaging staff. Even her death from aplastic anaemia was most likely due to internal and external exposures to radiation during her career and echoed her achievements in unlocking atomic mysteries and advancing physics, chemistry, and medicine. Marie was the first woman to be enshrined in the Paris Pantheon where her and her husband's ashes were transferred to in 1995. Her life's work had profound global impacts – for good and for ill – from her time through to present day as highlighted in this report which was prepared for a special issue of IJRB.

2. Properties of Radium

The unit of radioactivity, the “curie”, was named for Marie and Pierre Curie and is defined as the activity from 1 gram of radium decay, about 3.7×10^{10} decays per second. Radium has 33 known isotopes ranging from ^{202}Ra to ^{234}Ra (Figure 1), of which seven are of interest in radiation dosimetry given in Table 1. Radium is found in the form of oxides, nitrates, chlorides, sulphates and luminescing residues in industrial settings and as trace amounts in uranium ores. Mixtures of beryllium and radium as $^{226}\text{RaBe}$ form neutron sources through (α, n) and (γ, n) interactions. Occupational radium originates from ^{224}Ra , ^{226}Ra , and ^{228}Ra . As radium behaves similarly to calcium (Ca) and barium (Ba), ^{223}Ra has become an emerging modality for targeted alpha therapy for bone cancer metastases.

3. Dose Assessment

In radiation protection from radium, most consideration is given to radon and thoron (^{220}Rn) progeny because they comprise the main sources of exposure. Exposure to radon, whether occupational (e.g., uranium mining) or environmental (e.g., home), depends on local geology, building composition and construction and household lifestyles. According to the United Nations Scientific Committee on the Effects of Atomic Radiation (UNSCEAR), natural radiation comprises 80% of the total average annual dose of ionizing radiation to the global population, from which half (1.2 mSv) is attributable to the inhalation of radon gas (UNSCEAR 2010).

The most prevalent dosimetric impact from radium through the inhalation pathway comes from the radium progeny as radon (Rn). Radon gas is formed during the decay of natural uranium in the soil and rock of the earth and seeps into interior dwellings. Radiological uptake of radon is typically through the inhalation of airborne radon and its progeny, from which the predominant dose is due to its radioactive decay products (or progeny) and not the inhalation of radon gas itself. The isotopes of radon considered range from the primordial radionuclides, ^{238}U giving rise to radon (as ^{222}Rn) from ^{226}Ra , ^{232}Th giving rise to thoron from ^{224}Ra , and ^{235}U giving rise to actinon (^{219}Rn) from ^{223}Ra .

Radon, thoron and actinon gases decay into solid progeny comprised of radionuclides that emit alpha particles. These progenies deliver > 95% of the dose received by the lung airway epithelia. As progeny decay, they form 1 nm clusters, termed the “unattached fraction”

alongside larger particles (10 nm to > 1 μ m), termed the “attached fraction.” The difference in concentration between radon gas and solid progeny is given by the “equilibrium factor,” its value depends on the radon progeny rather than the radon gas. Radon gas is chemically inert, but can be absorbed into the pulmonary, arterial and venous blood. Measurement of the radium radionuclide, typically from gamma spectroscopy of the progeny of the ^{238}U and ^{232}Th series (Figure 1), can be used to calculate the activity concentration and dose coefficient models to determine internalized dose. Effective dose from the inhalation of radon is attributed mostly to lung equivalent doses from the deposition in the respiratory airway of solid aerosol particles (Figure 2), which is dependent on the particle size distribution. Physiologically, breathing rate is additionally a core factor in determining the intake and subsequent lung dose.

ICRP Publication 115 (ICRP 2010) provides updated risks of lung cancer from radon and its progeny based on estimates derived from epidemiological studies of miner cohorts exposed to low levels of radon and lung cancer risk associated with indoor radon exposure. ICRP Publication 137 (ICRP 2017), iterated on ICRP Publication 103 (ICRP 2007) detriment, ICRP Publication 115 risk coefficients, and epidemiological evidence to derive effective dose coefficients given in Table 12.6 of ICRP Publication 137 for indoor workplaces, mines and tourist caves for radon progeny ($^{218}\text{Po}/^{214}\text{Pb}/^{214}\text{Bi}$) and thoron progeny ($^{212}\text{Pb}/^{212}\text{Bi}$). Figure 3 depicts the fractional retention from uptakes of radium progeny from ^{226}Ra inhalation and ingestion for those concentrations that are relevant to occupational or environmental exposures ((Clark 1997); (ICRP 2010); (Gunderman and Gonda 2015); (Cohen and Kim 2017); (Martinez, Jokisch et al. 2021)) and ^{223}Ra for targeted radiopharmaceutical therapy (Höllriegl, Petoussi-Henss et al. 2021).

With *in-situ* decay time and biological excretion, the displayed total activity in Figure 3 can fall below the intake value (percentages below 100%), but in other cases, the accumulation of multiple short-lived decay products (radioactive progeny) will give us a total body activity (across all radioisotopes) that exceeds the intake value (percentages above 100%). As given in transfer coefficients defining the biokinetic model in ICRP Publication 137 (ICRP 2017), inhalation of ^{226}Ra results in < 50% initial total activity retention for radium and its progeny (Figure 1). In the lungs, biological and physical decay result in retention of less than 10% of the total activity retention in the first 12 days. Meanwhile, uptake to the bone surface and marrow drops to less than 1% of the total activity retention in first 12 days. Ingestion of ^{226}Ra leads to accumulation primarily in the stomach (100% parent activity). The total activity peaks in the body within 17 hours of ingestion with different retention in the small intestine, colon, and bone as detailed by Martinez et al. (Martinez, Jokisch et al. 2021). Injection of ^{223}Ra results in a peak total activity exceeding the initial activity of the ^{223}Ra parent six-fold within the first four hours of injection, migrating initially from the blood (20%) and liver (6.4%), accumulating in the colon (221.7%) and bone (173%) due to progeny ingrowth of physically short-lived radionuclides including ^{219}Rn ($t_{1/2} = 3.96\text{s}$), ^{215}Po ($t_{1/2} = 1.78\text{ms}$), ^{211}Pb ($t_{1/2} = 36.1\text{min}$), ^{211}Bi ($t_{1/2} = 2.14\text{min}$), ^{211}Po ($t_{1/2} = 0.516\text{s}$), and ^{207}Tl ($t_{1/2} = 4.77\text{min}$) with ^{223}Ra pharmacokinetics described by Höllriegl et al. (Höllriegl, Petoussi-Henss et al. 2021). Total body retention drops below 10% of the initial parent activity within 30 days of injection.

4. Detrimental Health Effects and Possible Treatments

Following Marie Curie's discovery of radium, this radioactive element was soon combined with paint to create luminescent dye that could be used to identify items in the dark. These included airplane dials and watch dials, and the painting process required precision. Many of the individuals hired by Luminous Processes and several other companies were young women who were unaware of the risks from exposure. They would typically make the tip of the paint brush fine by licking it thereby ingesting this radionuclide ((Clark 1997); (Gunderman and Gonda 2015); (Cohen and Kim 2017); (Martinez, Jokisch et al. 2021)). As noted before, radium is chemically similar to calcium and targets bone; the most common isotope ^{226}Ra releases alpha particles (and to a lesser extent gamma-rays). Once lodged in bone it causes damage to the nearby cells.

Bone cancer (skull, jaw) often resulted from the ingested radiation ((Stebbing 1984); (Carnes 1997); (Polednak 1978); (Spiers 1983); (Adams 1980)). Some other cancers were also shown to be increased in these women (for example multiple myeloma, which is thought to be due to the gamma-ray exposure; leukemias; breast cancer; and others). These "Radium Girls" from the recently released movie of the same title were also exposed to inhalation hazards since some of the radiation became airborne in flakes or dust and resulted in lung cancer. Dose-response relationships were also examined in several studies ((Rowland 1983); (Bijwaard 2006)). Reviews have examined results from these studies ((Fry 1998); (Boice 2019)), and there is significant information about them in the literature.

The numerous studies performed on the radium dial workers generated a rich source of information that continues to inform an understanding of radiation carcinogenesis in the world today. Studies of this exposed population enhanced a broad scientific understanding of health effects of internally deposited radionuclides, basic modeling of internal emitters and understanding of molecular mechanisms of cancers induced by internal emitters.

Because of the large amount of radioactivity, many of the bodies of these radium workers remain buried at a site at the Argonne National Laboratory.

There is no specific decorporation treatment currently available to promote the targeted removal of radium from contaminated patients. However, administration of calcium is recommended and may be beneficial (Hickman 2010), as both calcium and radium are alkaline earth metals and a mass effect could help calcium interfere with the absorption and deposition of radium. Large doses of calcium can be provided as common, over-the-counter oral calcium supplements, or through the repeated intravenous administration of the calcium salt of gluconic acid, calcium gluconate, a medication frequently used in the management of hypocalcemia (Fong and Khan 2012), cardiac arrest (Kette, Ghuman et al. 2013), and cardiotoxicity due to hyperkalemia or hypermagnesemia (Vanden Hoek, Morrison et al. 2010). An additional potential treatment option is the use of sodium alginate, a kelp derivative known to bind another alkaline earth metal (Gao, Guo et al. 2020), strontium, in the gastrointestinal tract, thereby preventing radium absorption.

Recent studies have begun to re-assess the work done with radium dial painters, and a new review by Martinez et al. (Martinez, Jokisch et al. 2021) examines the history and the

updates that are on-going with the epidemiological cohort. This work is being done as part of the Million Person Study of American workers and veterans; updates have included new dosimetric analyses as well as modeling. In late 2021, the National Council on Radiation Protection and Measurements (NCRP) formally established Scientific Committee 6–13 to explore a systematic reassessment of the radium intakes of the Dial Painters and their resulting organ doses over time.

5. Therapeutic Health Effects

Radon Spa - Is every radon dose dangerous?

The idea to use radon as a therapeutic agent and the rise of radon spas came to prominence during the period of heavy uranium mining that took place in the cold war but can be traced back much further than that, perhaps even to the Roman empire (Trott 2005). The first major mines were in former Czechoslovakia and East Germany in central Europe, isolating more than 300,000 tons of uranium ore between the end of WWII until recently (Miloš 2017). Marie Curie's initial source of pitchblende and radium are famously linked to that area along the Czech/German border. As Mathew Vickery (BBC) noted, there was a dark side to uranium mining during that time which was its connection to forced labor of political prisoners. With time, the uranium mining stopped, but the spas are still in use. The "Radium Palace" in Jáchymov (Czech Republic) that first opened in 1912 still runs to this day. Similar radon spas or radium-rich springs still exist in Austria, Germany, Poland, Romania, Bulgaria, Russia, Italy, France, Serbia, Greece, Chile and Japan ((Deetjen, Falkenbach et al. 2005); (Zdrojewicz and Strzelczyk 2006)).

The dose of radon in the air in the European mines can range from about 37 Bq/L up to 167 Bq/L, which is about 1000 times the US EPA's recommendations for maximum home exposure (Erickson 2006). Bad Gastein Spa in Austria reports <1000 Bq/L for their radon water, while Jáchymov's radioactive water baths measure around 2500 Bq/L, which in turn is a magnitude below that on the German side in Bad Brambach ((Miloš 2017); (Erickson 2006)). In the US, whether out of caution, or because of competing interests, radon treatment has never been approved by the American Medical Association and is not covered by insurance companies. Instead, patients have to rely on their own good judgment and initiative, when visiting places such as the old uranium mines around Boulder and Basin in Montana (Erickson 2006). There, the general suggestion is to follow a 10-day treatment course and a total of 32h spent in the mine with no oversight, no personnel, patient records or any inspection by governmental health agencies. Similarly, patients who travel to Safaga in Egypt and bury their rheumatic joints in radioactive sands during "vacations with benefit" or climatotherapy are left to their own devices (Nuzzo 2007). With regard to the 'radon at homes' even, a few of the recent studies found that the relative number of lung cancers decreases with increasing radon concentrations in the air for radon concentrations up to 200–300 Bq/m³ (Thompson, Nelson et al. 2008); (Dobrzy ski, Fornalski et al. 2017); (Pylak, Fornalski et al. 2021).

Radon therapy was historically tried for a variety of ailments, including painful joints, skin problems, respiratory illness and allergies. In present day, radon therapy is primarily used to treat painful degenerative or inflammatory joint diseases, particularly rheumatoid arthritis

and ankylosing spondylitis (Bechterew's disease) – conditions that tend to have strong inflammatory and often autoimmune components. Exposure takes place within warm radon water baths, steam baths or by inhalation of radon gas/steam and in some rarer cases through ingestions of radon-infused water. The route of uptake is therefore generally transcutaneous or through pulmonary or intestinal mucosal resorption. The elevated temperature of water and steam tends to aid this process through increasing blood circulation. A typical treatment of 9–10 independent 20 min baths in 600–1600 Bq/L radon water over three weeks might result in an estimated epidermal skin dose of about 2 mGy, and as an alpha emitter with only a weak gamma component, the amount reaching the circulation and inner organs is likely in the order of a few μGy or 0.2–0.5mSv (Deetjen, Falkenbach et al. 2005). The low fluence of radon emission suggests that resultant cellular ionization events can be dense but very localized, although they may be potentially amplified through bystander effects. This is where exploration of the mechanism of action becomes interesting (Figure 4).

The clinical experience with radon therapy, including in more recent prospective, randomized, double-blind and placebo-controlled settings has been one of fairly consistent anti-inflammatory and prolonged analgesic effects ((Deetjen, Falkenbach et al. 2005); (Franke, Reiner et al. 2000); (Rühle, Wunderlich et al. 2017)). Compared to other treatments, these benefits are slow to develop and tend not to reach a level of significance until months later, but can be long-lasting ((Falkenbach A 2005); (Rühle, Klein et al. 2019)). Even though the reports of reduction in painkiller usage by many radon-treated patients appear at first sight to be fairly trivial, they should not be dismissed too easily as side effects of prolonged drug treatment and can be especially severe in the elderly. The fact that treatment-induced pain reduction can coincide with a rise in circulating TGF- β and/or a fall in TNF- β adds some weight to the general concept as does the drop in activation markers on lymphocytes and reduced reactive oxygen species (ROS) output by phagocytes ((Kullmann, Rühle et al. 2019); (Rühle, Wunderlich et al. 2017); (Shehata M 2004); (Reinisch 1999)). Those familiar with the topic will recognize parallels to the use of low-dose radiotherapy for the treatment of chronic benign conditions of different disease etiology, using low linear energy transfer (LET) and slightly higher radiation dose levels than radon therapy.

Cancer Treatment and Radiopharmaceutical Therapy

Radium was in use for treatment of different types of topical cancers (uterine, cervical, rectal, etc.) from early 1900's and "radium institutes" opened not only in France and Poland where Marie Curie was engaged as one of the contributors, but also in other parts of the world ((Lenz 1973)). A PubMed search in August 2021 on radium and cancer brings over 11,000 references.

Over the past two decades, the radiological and chemical properties of radium isotopes have re-gained prominence in medical physics and radiation oncology through the development of $^{223}\text{RaCl}_2$ as a radiopharmaceutical for alpha-therapy (Marques, Neves et al. 2018). Alpha therapy (referred to as α -emitter radiopharmaceutical therapy) holds great potential as a cancer treatment: It promises the delivery of a highly cytotoxic dose to cancer cells while lessening damage to surrounding tissue, due to the short range and high linear energy transfer (LET) of alpha particles (Parker, Lewington et al. 2018). In addition, alpha therapy

could help circumvent adaptive resistance and cell cycle progression, which are hurdles associated with conventional radiation therapy. Ra-223, commercialized as Xofigo is the first alpha emitter approved by both the U.S. Food and Drug Administration (FDA) and the European Medicines Agency (EMA) to treat bone metastatic tumors that originated from castration resistant prostate cancer ((Kluetz, Pierce et al. 2014, Gourd 2018)). The relatively short half-life of ^{223}Ra (11.4 days, vide supra) is ideal for a radiotherapeutic treatment, with up to 27.9 MeV released from the four alpha and two beta particles sequentially emitted throughout its decay pathway down to ^{207}Pb . New therapies with Ra are being explored in the cancer treatment literature almost daily. Further studies are needed to investigate the beneficial or adverse biological effects of radon overall.

6. Conclusion

As a discoverer of radium, Marie Curie can be at least partially credited for all the radium associated topics discussed in this review. We can also expand this statement and, in this special issue of the IJRB say that these discoveries should be attributed to the joint work done by the women in science. The discoveries of Marie Curie have changed the world—from therapy of diseases to imaging of diseases to mechanistic understandings of our environment. Her example and prominence have inspired young people, male and female alike, influencing generations to study physics, chemistry, biology, and more.

Despite the importance of Marie Curie in this, we also must consider the question of the role of women in science differently. For example, we could ask ourselves – would Marie accomplish all she did if she was not working with a male colleague (her husband) who had much fewer barriers on his path compared to a woman working on her own? Isn't it logical to assume that there were and perhaps still are other women with knowledge and capacity whose path to scientific discoveries was blocked by obstacles arising from everyday prejudice and whose potential discoveries the world will never see? This special issue is prepared to honor women scientists who were fortunate enough to contribute to science; we should try to leverage a fuller understanding about the challenges of research to decrease some of the barriers still faced by female scientists.

Acknowledgements

This work was funded by DoD award W81XWH-20-PRMRP-FPA (PD GEW; PIs WB, SD, GEW, RA, AG, DH) and by NCI R01CA226875 (PI DS); NIAID U01AI1148322 (PI DS).

It was also partially funded by Georgia Institute of Technology Award, AWD-002993 under Prime Grant Number GR00013131 with Sandia National Laboratories.

We thank Susan Brand and Caitlin Youngquist for creating new artwork for this manuscript, which was supported by the University of California Contractor Supporting Research Program at Lawrence Berkeley National Laboratory under U.S. Department of Energy Contract No. DE-AC02-05CH11231.

Biographies

Rebecca J. Abergel is an Associate Professor of Nuclear Engineering at the University of California, Berkeley, and a Faculty Scientist at the Lawrence Berkeley National Laboratory, where she leads the Heavy Element Chemistry group.

John Aris, PhD is an Associate Professor in the Department of Anatomy and Cell Biology at the University of Florida, Gainesville, Florida, USA.

Wesley E. Bolch, PhD is a Distinguished Professor in the J. Crayton Pruitt Family Department of Biomedical Engineering at the University of Florida, Gainesville, Florida USA, and Director of ALRADS – Advanced Laboratory for Radiation Dosimetry Studies.

Shaheen Azim Dewji, PhD, is an Assistant Professor in the Nuclear and Radiological Engineering and Medical Physics Programs at the George W. Woodruff School of Mechanical Engineering, Georgia Institute of Technology, Atlanta, GA, USA.

Ashley P. Golden, PhD, is the Director of ORISE Health Studies and Senior Biostatistician in Epidemiology and Exposure Science at Oak Ridge Associated Universities, Oak Ridge Tennessee.

David A. Hooper, PhD, is a Senior R&D Staff Member and the Interim Group Leader for the Detonation Forensics and Response group at Oak Ridge National Laboratory, Oak Ridge, Tennessee.

Dmitri Margot is a PhD student in the Nuclear and Radiological Engineering and Medical Physics Programs at the George W. Woodruff School of Mechanical Engineering, Georgia Institute of Technology, Atlanta, GA, USA.

Carly G. Menker is a Researcher in the Department of Radiation Biology, at Northwestern University Lurie Comprehensive Cancer Center, Feinberg School of Medicine, Chicago, IL.

Tatjana Paunesku, PhD, is a Research Associate Professor in the Department of Radiation Biology, at Northwestern University Lurie Comprehensive Cancer Center, Feinberg School of Medicine, Chicago, IL.

Dörthe Schaeue, PhD, is an Associate Professor in the Department of Radiation Oncology, David Geffen School of Medicine at the University of California at Los Angeles (UCLA), Los Angeles, California, USA.

Gayle E. Woloschak, PhD, is Professor of Radiation Oncology at Northwestern University Lurie Comprehensive Cancer Center, Feinberg School of Medicine, Chicago, IL.

References:

- Adams E, Brues AM (1980). "Breast cancer in female radium dial workers first employed before 1930." *J Occup Med*: 22(29):583–587. [PubMed: 7452380]
- Bijwaard H (2006). "Mechanistic models of bone cancer induction by radium and plutonium in animals compared to humans." *Radiat Prot Dosimetry*: 122(121–124):340–124. [PubMed: 17166879]
- Boice J, Held KD, Shore RE (2019). "Radiation epidemiology and health effects following low-level radiation exposure." *J Radiol Prot*: 39(34):S14–S27. [PubMed: 31272090]
- Carnes B, Groer PG, Kotek TJ (1997). "Radium dial workers: issues concerning dose response and modeling." *Radiat Res*: 147(146):707–114. [PubMed: 9189169]

- Chemistry T. N. P. i. (1911). “Nobel Prize Outreach AB 2021” [NobelPrize.org](https://www.nobelprize.org).
- Clark C (1997). Radium girls, women and industrial health reform: 1910–1935, Univ of North Carolina Press.
- Cohen DE and Kim RH (2017). “The legacy of the radium girls.” *JAMA dermatology* 153(8): 801–801. [PubMed: 28793169]
- Curie M (1903). “Recherches sur les substances radioactives.” PhD Thesis presented to the Faculty of Sciences in Paris
- Curie M (1961). “Radioactive Substances: A Translation from the French of the Classical Thesis Presented to the Faculty of Sciences in Paris by the Distinguished Nobel Prize Winner Marie Curie”
- Deetjen P, Falkenbach A, Harder D, Jöckel H, Kaul A and H. v. Philipsborn (2005). Radon als Heilmittel. Therapeutische Wirksamkeit, biologischer Wirkungsmechanismus und vergleichende Risikobewertung Hamburg, Verlag Dr. Kova .
- Dobrzy ski L, Fornalski KW and Reszczy ska J (2017). “Meta-analysis of thirty-two case–control and two ecological radon studies of lung cancer.” *Journal of Radiation Research* 59(2): 149–163.
- Erickson BE (2006). “The therapeutic use of radon: a biomedical treatment in Europe; an “alternative” remedy in the United States.” Dose-response : a publication of International Hormesis Society 5(1): 48–62. [PubMed: 18648554]
- Falkenbach A, K. J., Franke A, Jörgens K, Ammer K(2005). “Radon therapy for the treatment of rheumatic diseases--review and meta-analysis of controlled clinical trials..” *Rheumatol Int Apr*: 25(23):205–210. [PubMed: 14673618]
- Fong J and Khan A (2012). “Hypocalcemia: updates in diagnosis and management for primary care.” *Canadian family physician* 58(2): 158–162. [PubMed: 22439169]
- Franke A, Reiner L, Pratzel HG, Franke T and Resch KL (2000). “Long-term efficacy of radon spa therapy in rheumatoid arthritis--a randomized, sham-controlled study and follow-up.” *Rheumatology (Oxford)* 39(8): 894–902. [PubMed: 10952746]
- Fry SA (1998). “Studies of U.S. radium dial workers: an epidemiological classic.” *Radiat Res*: 150(155 Suppl):S121–159. [PubMed: 9806615]
- Gao X, Guo C, Hao J, Zhao Z, Long H and Li M (2020). “Adsorption of heavy metal ions by sodium alginate based adsorbent-a review and new perspectives.” *International journal of biological macromolecules*
- Gourd E (2018). “EMA guidance on radium-223 dichloride in prostate cancer.” *The Lancet Oncology* 19(4): e190. [PubMed: 29551361]
- Gunderman RB and Gonda AS (2015). Radium girls, Radiological Society of North America
- Hickman DP (2010). Management of persons contaminated with radionuclides: NCRP report no. 161 (Volume 1), Oxford University Press.
- Höllriegl V, Petoussi-Hens N, Hürkamp K, Ramos JCO and Li WB (2021). “Radiopharmacokinetic modelling and radiation dose assessment of 223Ra used for treatment of metastatic castration-resistant prostate cancer.” *EJNMMI physics* 8(1): 1–18. [PubMed: 33409746]
- ICRP (2007). “ICRP Publication 103: Recommendations of the International Commission on Radiological Protection.” *Ann ICRP* 37(2–4): 1–332.
- ICRP (2010). “ICRP Publication 115: Lung Cancer Risk from Radon and Progeny and Statement on Radon.” *Ann ICRP* 40(1).
- ICRP (2017). “ICRP Publication 137: Occupational intakes of radionuclides: Part 3.” *Ann ICRP* 46(3–4): 1–486.
- Kette F, Ghuman J and Parr M (2013). “Calcium administration during cardiac arrest: a systematic review.” *European Journal of Emergency Medicine* 20(2): 72–78. [PubMed: 22990036]
- Kluetz PG, Pierce W, Maher VE, Zhang H, Tang S, Song P, Liu Q, Haber MT, Leutzinger EE and Al-Hakim A (2014). “Radium Ra 223 dichloride injection: US Food and Drug Administration drug approval summary.” *Clinical cancer research* 20(1): 9–14. [PubMed: 24190979]
- Kullmann M, Rühle PF, Harrer A, Donaubaue A, Becker I, Sieber R, Klein G, Fournier C, Fietkau R, Gaipf US and Frey B (2019). “Temporarily increased TGFβ following radon spa correlates with reduced pain while serum IL-18 is a general predictive marker for pain sensitivity.” *Radiat Environ Biophys* 58(1): 129–135. [PubMed: 30456560]

- Lenz M (1973). "The early workers in clinical radiotherapy of cancer at the Radium Institute of the Curie Foundation, Paris, France." *Cancer Sep*: 32(33):519–523. [PubMed: 4580228]
- Marques I, Neves A, Abrantes A, Pires A, Tavares-da-Silva E, Figueiredo A and Botelho M (2018). "Targeted alpha therapy using Radium-223: From physics to biological effects." *Cancer treatment reviews* 68: 47–54. [PubMed: 29859504]
- Martinez NE, Jokisch DW, Dauer LT, Eckerman KF, Goans RE, Brockman JD, Tolmachev SY, Avtandilashvili M, Mumma MT and Boice JD Jr (2021). "Radium dial workers: back to the future." *International Journal of Radiation Biology*: 1–19.
- Miloš R (2017). *History of Uranium Mining in Central Europe. Uranium - Safety, Resources, Separation and Thermodynamic Calculation*. N. S. Awwad, IntechOpen.
- Nuzzo R (2007). *Vacations with benefits*. Los Angeles Times
- Parker C, Lewington V, Shore N, Kratochwil C, Levy M, Lindén O, Noordzij W, Park J, Saad F and Group TATW (2018). "Targeted alpha therapy, an emerging class of cancer agents: a review." *JAMA oncology* 4(12): 1765–1772. [PubMed: 30326033]
- Physics T. N. P. i. (1903). "Nobel Prize Outreach AB 2021" [NobelPrize.org](https://www.nobelprize.org).
- Polednak AP (1978). "Bone cancer among female radium dial workers. Latency periods and incidence rates by time after exposure: brief communication." *J Natl Cancer Inst*: 60(61):77–82. [PubMed: 628024]
- Pylak M, Fornalski KW, Reszczy ska J, Kukulski P, Waligórski MPR and Dobrzy ski L (2021). "Analysis of Indoor Radon Data Using Bayesian, Random Binning, and Maximum Entropy Methods." *Dose-Response* 19(2): 15593258211009337. [PubMed: 34035781]
- Reinisch N (1999). *Reduktion der Sauerstoffradikalfreisetzung aus Neutrophilen bei Patienten mit ankylosierender Spondylitis durch eine kombinierte Radon- und Hyperthermietherapie*. Radon und Gesundheit Deetjen P and Falkenbach A Frankfurt am Main, Peter Lang, Europäischer Verlag der Wissenschaften: 75–81.
- Rowland R, Stehney AF, Lucas HF (1983). "Dose-response relationships for radium-induced bone sarcomas." *Health Phys*: 44 Suppl 41:15–31. [PubMed: 6862895]
- Rühle PF, Klein G, Rung T, Tiep Phan H, Fournier C, Fietkau R, Gaipl US and Frey B (2019). "Impact of radon and combinatory radon/carbon dioxide spa on pain and hypertension: Results from the explorative RAD-ON01 study." *Mod Rheumatol* 29(1): 165–172. [PubMed: 29451048]
- Rühle PF, Wunderlich R, Deloch L, Fournier C, Maier A, Klein G, Fietkau R, Gaipl US and Frey B (2017). "Modulation of the peripheral immune system after low-dose radon spa therapy: Detailed longitudinal immune monitoring of patients within the RAD-ON01 study." *Autoimmunity* 50(2): 133–140. [PubMed: 28263099]
- Shehata M, S. J., Hilgarth M, Hubmann R, Duechler M, Gisslinger H (2004). "TGF-beta1 induces bone marrow reticulin fibrosis in hairy cell leukemia." *J Clin Invest Mar*: 113(115):676–185. [PubMed: 14991065]
- Spiers F, Lucas HF, Rundo J, Anast GA (1983). "Leukaemia incidence in the U.S. dial workers." *Health Phys*: 44 Suppl 41:65–72.
- Stebbins J, Lucas HF, Stehney AF (1984). "Mortality from cancers of major sites in female radium dial workers." *Am J Ind Med*: 5(6):435–459. [PubMed: 6731445]
- Thompson RE, Nelson DF, Popkin JH and Popkin Z (2008). "CASE-CONTROL STUDY OF LUNG CANCER RISK FROM RESIDENTIAL RADON EXPOSURE IN WORCESTER COUNTY, MASSACHUSETTS." *Health Physics* 94(3): 228–241. [PubMed: 18301096]
- Trott K-R (2005). "Radon als Heilmittel. Therapeutische Wirksamkeit, biologischer Wirkungsmechanismus und vergleichende Risikobewertung (Radon therapy. Therapeutic effects, biological mechanism, and relative risk assessment)." *Radiation and Environmental Biophysics* 44(2): 157–158.
- UNSCEAR (2010). *UNSCEAR 2008 Report: "Sources and effects of ionizing radiation"*. U. Nations. New York, United Nations. I.
- Vanden Hoek TL, Morrison LJ, Shuster M, Donnino M, Sinz E, Lavonas EJ, Jeejeebhoy FM and Gabrielli A (2010). "Part 12: cardiac arrest in special situations: 2010 American Heart Association guidelines for cardiopulmonary resuscitation and emergency cardiovascular care." *Circulation* 122(18_suppl_3): S829–S861. [PubMed: 20956228]

- Wolke RL (1988). "Marie Curie's doctoral thesis: Prelude to a Nobel Prize." *Journal of Chemical Education* 65 (67), 561
- Zdrojewicz Z and Strzelczyk JJ (2006). "Radon treatment controversy." *Dose-response : a publication of International Hormesis Society* 4(2): 106–118. [PubMed: 18648641]

Author Manuscript

Author Manuscript

Author Manuscript

Author Manuscript

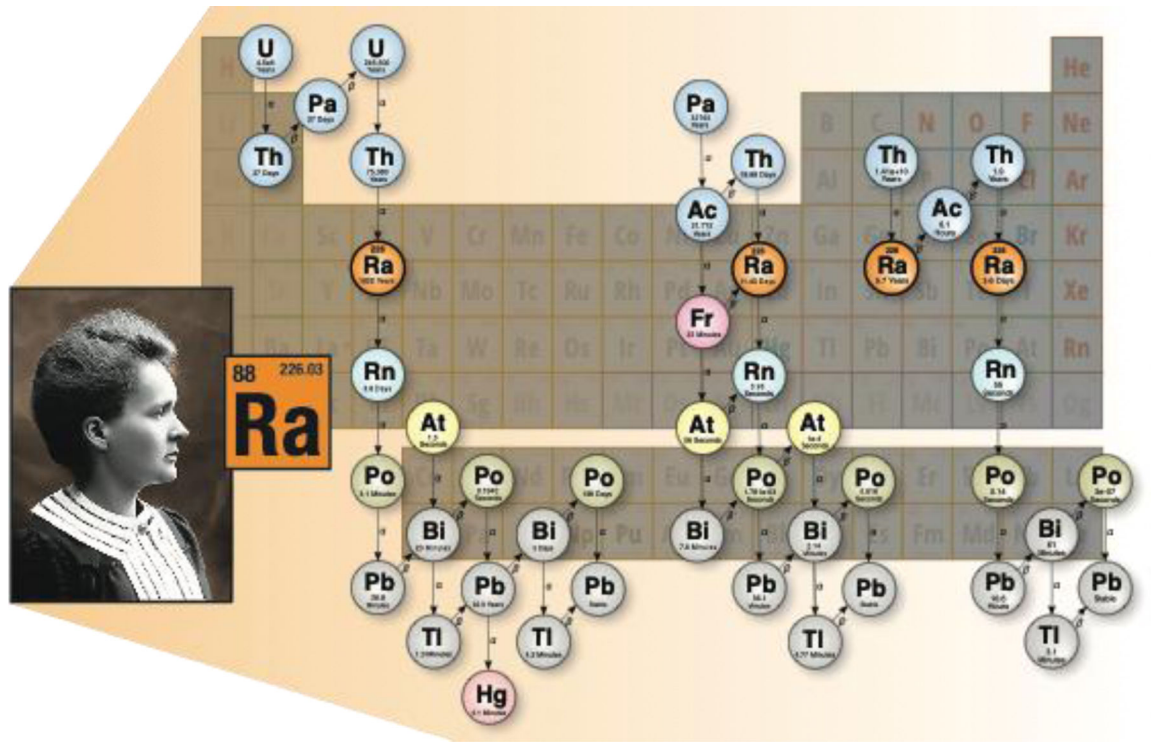


Figure 1. Production and decay of ^{226}Ra (left), ^{223}Ra (center), and ^{228}Ra and ^{224}Ra (right).

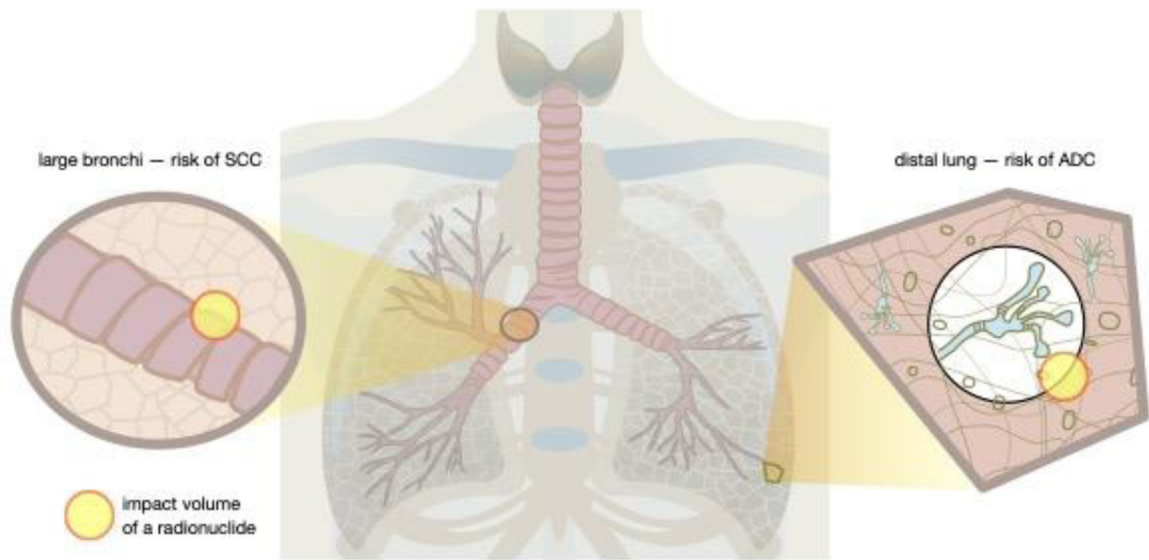


Figure 2.

Different areas of lung give rise to different types of lung cancer. For example, squamous cell carcinoma (SCC) occurs mostly in large bronchi, while adenocarcinomas (ADC) affect distal lung. Radium radionuclides that emit alpha and beta particles cause ionization of biological molecules within a spherical volume that changes over time with the decay progression. The position of radium inside the lung, however, depends on the chemical form and size distribution of particulate matter that contains radium. Consequently, DNA damage resulting in mutations occurs in different areas of the lung depending on radionuclide distribution. Therefore, placement of the same radionuclide close to cells lining large vs. small and distal lung airways will result in development of different cancer types. In other words, physical objects that regulate radionuclide distribution and biological properties of the targeted cells are more important for determination of cancer type than the radionuclide itself.

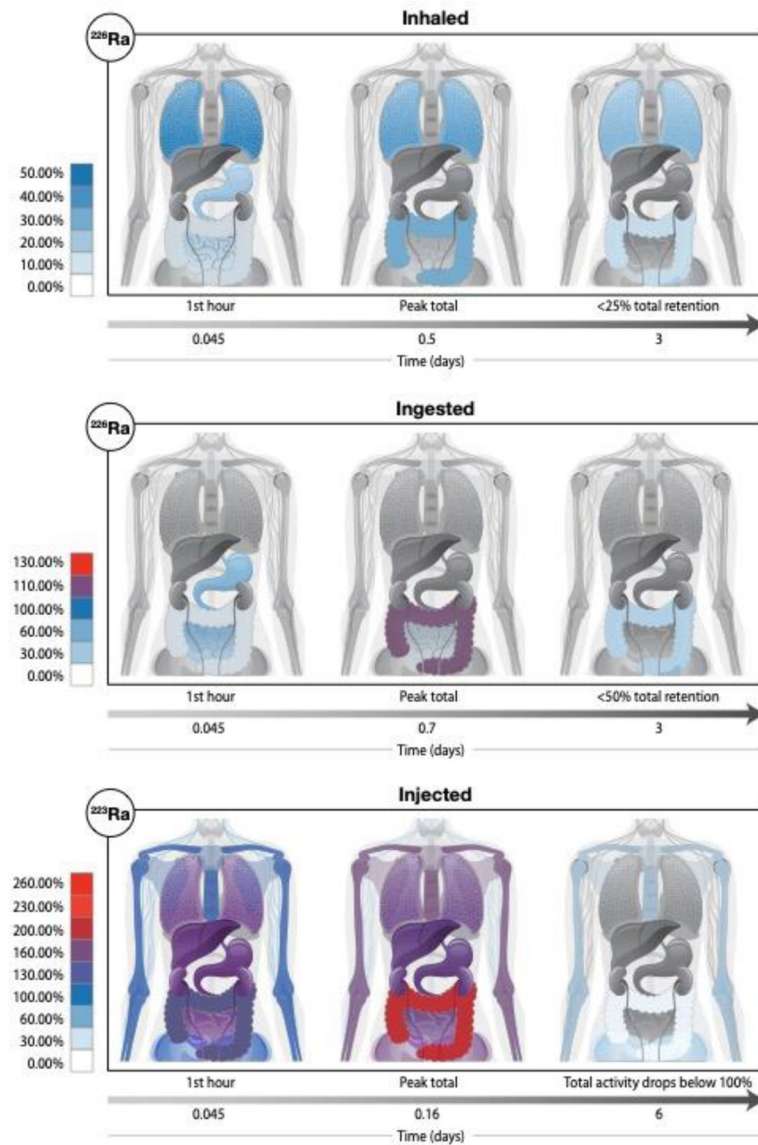


Figure 3.

The anatomical location and the total magnitude of radioactivity of radium and its various progeny is depicted following three intake scenarios: (top row) inhalation of the radioisotope ^{226}Ra , (middle row) ingestion of the radioisotope ^{226}Ra , and (bottom row) injection of the radioisotope ^{223}Ra . For each scenario, we show graphically the biodistribution of total activity (parent plus ingrown daughter radionuclides) at three time points since the intake (at $t=0$). The colored scale is normalized to 100% which represents a unit intake (say 1 Bq) of the radium isotope by either inhalation, ingestion, or injection. We note that with *in-situ* decay time and biological excretion, the displayed total activity can fall below the intake value (percentages below 100%), but in other cases, the accumulation of multiple short-lived decay products (radioactive progeny) will give us a total body activity (across all radioisotopes) that exceeds the intake value (percentages above 100%).

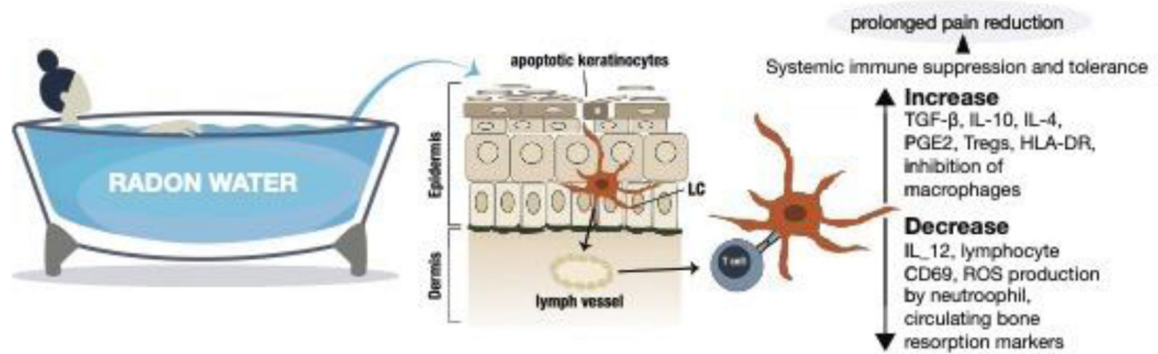


Figure 4.

Mechanisms of action. The current school of thought suggests that there is enough alpha particle damage to cause apoptosis in a few keratinocytes or other epithelial cells, which in turn get phagocytosed by Langerhans cells (LC) or similar antigen presenting cells that migrate to the lymph nodes where they can modulate the immune balance systemically away from the pro-inflammatory Th1 bias (Deetjen et al. 2005). Much of this seems to rely on anti-inflammatory cytokines such as TGF- β and IL-10 either directly from dying cells or following uptake by neighboring phagocytes with the assumption that these cytokines are potent inhibitors of inflammatory processes such as leukocyte infiltration and macrophage/neutrophil function. This concept is largely an extrapolation from studies on ultraviolet (UV) radiation or low dose ionizing radiation. Nonetheless, there is growing evidence from clinical and pre-clinical studies that would support this therapeutic radon concept of rebalancing inflammatory/immune networks.

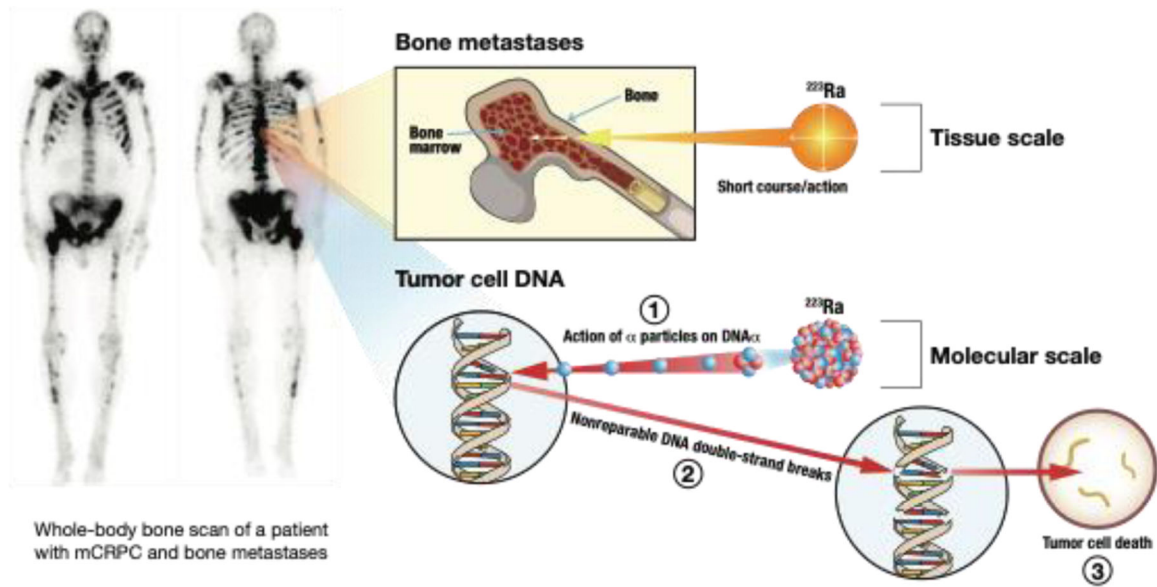


Figure 5. Alpha therapy is an effective treatment for bone metastases. Radionuclides such as radium which home to the bone inherently execute targeted therapy of bone metastases.

Table 1.

Properties of radium isotopes in radiation dosimetry.

Isotope	Physical Half-Life	Decay Mode
²²³ Ra	11.43 d	α
²²⁴ Ra	3.66 d	α
²²⁵ Ra	14.9 d	β ⁻
²²⁶ Ra	1600 y	α
²²⁷ Ra	42.2 min	β ⁻
²²⁸ Ra	5.75 y	β ⁻
²³⁰ Ra	93 min	β ⁻

Author Manuscript

Author Manuscript

Author Manuscript

Author Manuscript