

# UC San Diego

## UC San Diego Previously Published Works

### Title

Dissecting the significance of ACP1 gene alterations in prostate cancer (PCa).

### Permalink

<https://escholarship.org/uc/item/8k1035dt>

### Journal

Journal of Clinical Oncology, 42(16\_suppl)

### ISSN

0732-183X

### Authors

Abdallah, Nour

Elliott, Andrew

Nabhan, Chadi

et al.

### Publication Date

2024-06-01

### DOI

10.1200/jco.2024.42.16\_suppl.5025







### Copyright Information

This work is made available under the terms of a Creative Commons Attribution-NonCommercial-ShareAlike License, available at

<https://creativecommons.org/licenses/by-nc-sa/4.0/>

Peer reviewed

# Dissecting the Significance of Acid Phosphatase 1 Gene Alterations in Prostate Cancer

Nour Abdallah, MD<sup>1</sup> ; Andrew Elliott, PhD<sup>2</sup>; Norm Smith, MD<sup>2</sup>; Stephanie M. Stanford, PhD<sup>3</sup>; Neeraj Agarwal, MD<sup>4</sup> ; Aditya Bagrodia, MD<sup>5</sup> ; Rohan Garje, MD<sup>6</sup> ; Nunzio Bottini, MD, PhD<sup>3</sup> ; and Rana R. McKay, MD<sup>3</sup> 

DOI <https://doi.org/10.1200/PO-24-00444>

## ABSTRACT

**PURPOSE** The acid phosphatase 1 (*ACP1*) gene encodes low-molecular-weight protein tyrosine phosphatase, which is overexpressed in prostate cancer (PC) and a potential therapeutic target. We analyzed *ACP1* expression in primary/metastatic PC and its association with molecular profiles and clinical outcomes.

**METHODS** NextGen sequencing of DNA (592-gene/whole-exome sequencing)/RNA(whole-transcriptome sequencing) was performed for 5,028 specimens. *ACP1*-High/*ACP1*-Low expression was defined as quartile (Q<sub>4</sub>/1) of RNA transcripts per million (TPM). DNA mutational profiles were analyzed for *ACP1*-quartile-stratified samples. Gene set enrichment analysis was used for Hallmark collection of pathways. PD-L1+ (≥2+, ≥5%; SP14.2) was tested by immunohistochemistry. Tumor microenvironment's (TME) immune cell fractions were estimated by RNA deconvolution/quantIseq. Overall survival (OS) was assessed from initial diagnosis/treatment initiation to death/last follow-up.

**RESULTS** We included 3,058 (60.8%) samples from the prostate, 634 (12.6%) from lymph node metastases (LNMs), and 1,307 (26.0%) from distant metastases (DMs). *ACP1* expression was higher in LNM/DM than prostate (49.8/47.9 v 44.1 TPM;  $P < .0001$ ). *TP53* mutations were enriched in *ACP1*-Q<sub>4</sub> (37.9%[Q<sub>4</sub>] v 27.0%[Q<sub>1</sub>];  $P < .001$ ) among prostate samples. Pathways associated with cell cycle regulation and oxidative phosphorylation were enriched in *ACP1*-Q<sub>4</sub>, whereas epithelial-mesenchymal transition and tumor necrosis factor- $\alpha$  signaling via nuclear factor kappa-light-chain-enhancer of activated B-cell pathways were enriched in *ACP1*-Q<sub>1</sub>. Neuroendocrine and androgen receptor signaling was increased in *ACP1*-Q<sub>4</sub>. M2 macrophages and natural killer cell fractions were increased, whereas T cells and M1 macrophages were decreased in *ACP1*-Q<sub>4</sub>. While OS differences between *ACP1*-Q<sub>1</sub>/Q<sub>4</sub> were not statistically significant, there was a trend for worse OS among *ACP1*-Q<sub>4</sub> prostate samples (Q<sub>4</sub> v Q<sub>1</sub>: hazard ratio [HR], 1.19 [95% CI, 0.99 to 1.42];  $P = .06$ ) and DM (HR, 1.12 [95% CI, 0.93 to 1.36];  $P = .22$ ) but not LNM (HR, 0.98 [95% CI, 0.74 to 1.29];  $P = .87$ ).

**CONCLUSION** *ACP1*-High tumors exhibit a distinct molecular profile and cold TME, highlighting *ACP1*'s potential role in PC pathogenesis and novel therapeutic targeting.

## ACCOMPANYING CONTENT

 Appendix

Accepted August 26, 2024

Published October 2, 2024

JCO Precis Oncol 8:e2400444

© 2024 by American Society of Clinical Oncology

## INTRODUCTION

Prostate cancer (PC) is the most common cancer among men in the United States.<sup>1</sup> Most patients present with local disease and are cured with definitive local treatment.<sup>2</sup> However, some patients develop disease recurrence or present with de novo metastatic disease.<sup>3</sup> The backbone of systemic therapy for patients with recurrent or advanced disease is androgen deprivation therapy (ADT).<sup>4</sup> While most patients respond to ADT, some develop metastatic castration-resistant PC,

which is universally fatal.<sup>5</sup> An increased understanding of disease progression drivers is needed to ultimately improve patient outcomes and enhance therapeutic strategies in advanced settings.

Recently, there has been increased enthusiasm about protein tyrosine phosphatases as potential oncologic therapeutic targets, given their role in cancer progression and metastasis.<sup>6-9</sup> Low-molecular-weight protein tyrosine phosphatase (*LMPTPs*) are 18-kDa enzymes expressed in

## CONTEXT

### Key Objective

To understand the association of acid phosphatase 1 (*ACP1*) expression with molecular profiles and clinical outcomes in prostate cancer (PC).

### Knowledge Generated

In this study involving over 5,000 patients who underwent in-depth molecular profiling, we observed varying patterns of *ACP1* expression across tumor sites, with higher levels in lymph nodes and distant metastases, notably in the liver. In addition, we found that *TP53* alterations, *AR-V7* alterations, and genomic loss of heterozygosity were enriched among *ACP1*-High tumors. We also identified, through gene expression analysis, an upregulated cell cycle signaling and increased neuroendocrine PC and androgen receptor signaling in *ACP1*-High tumors. Moreover, the tumor microenvironment of *ACP1*-High tumors was immunosuppressive.

### Relevance

The molecular insights collectively indicate that high *ACP1* expression is associated with worse clinical outcomes. Thus, our work provides a rationale for investigating low-molecular-weight protein tyrosine phosphatase–targeting therapies in advanced PC and aggressive phenotypes.

many tissues.<sup>10</sup> Recent reports demonstrate that *LMPTP* is highly expressed in PC tumors and its expression is associated with increased resistance and inferior survival.<sup>9,11</sup>

Preclinical studies from our group demonstrate that *LMPTP* promotes PC growth, invasiveness, tumorigenesis, and bone metastasis development.<sup>12</sup> Through metabolomics, *LMPTP* was found to promote PC cell glutathione synthesis by dephosphorylating glutathione synthetase. PC cells lacking *LMPTP* showed reduced glutathione, enhanced activation of eukaryotic initiation factor 2–mediated stress response, and enhanced reactive oxygen species (ROS) when exposed to taxane chemotherapy. In addition, Ruela-de-Sousa et al<sup>9</sup> reported that *LMPTP* plays a role in promoting anchorage-independent growth of cancer cells by enhancing the activation of Src family kinases and focal adhesion kinase, leading to increased cell survival and proliferation in the absence of cell–matrix interactions. These mechanisms likely contribute to increased tumor aggressiveness and metastatic potential, providing a rationale for our investigation of *LMPTP* in PC.

*LMPTP* is encoded by the acid phosphatase 1 (*ACP1*) gene, which is upregulated in several malignancies.<sup>13</sup> Data from the Cancer Genome Atlas Program (TCGA) revealed that *ACP1* expression is increased in PC compared with normal prostate tissue and expression appears to be associated with higher Gleason score.<sup>12</sup> Furthermore, studies have demonstrated that *ACP1* expression was higher in lymph node metastases (LNMs) compared with the primary prostate.<sup>12</sup> While these data have been informative in identifying *ACP1* and *LMPTP* significance in PC, these studies have been limited in scope and sample.

Given the potential implications of *ACP1* and *LMPTP* in PC pathogenesis and with *LMPTP* emerging as a potential

therapeutic target, we analyzed a large multi-institutional clinic–genomics database to dissect the significance of *ACP1* expression in primary and metastatic prostate adenocarcinomas. We also characterized the DNA mutational profile, gene expression profile, tumor microenvironment (TME), and clinical outcomes in primary and metastatic prostate adenocarcinomas among tumors with high versus low *ACP1* expression.

## METHODS

### Study Cohort

The study cohort included patients with PC (N = 5,028) with formalin-fixed paraffin-embedded (FFPE) samples submitted to a commercial Clinical Laboratory Improvement Amendments–certified laboratory for molecular profiling (Caris Life Science, Phoenix, AZ). Eligible patients included those with a requisition diagnosis of prostatic adenocarcinoma (PRAD) with the availability of next-generation sequencing (NGS) through Caris Life Sciences. This study was led conformally to the guidelines of the Declaration of Helsinki, Belmont Report, and US Common Rule.

### DNA NGS and Genomic Loss of Heterozygosity

Genomic DNA was isolated for NGS using the NextSeq platform (Illumina, Inc, San Diego, CA) for 592 cancer-relevant genes (n = 1,004 samples) or the Illumina Nova-Seq 6000 platform (Illumina, Inc, San Diego, CA) for whole-exome sequencing (n = 4,024 samples). Targeted tissue was harvested using manual microdissection techniques to maximize tumor enrichment before molecular testing. Sequencing was performed as previously described.<sup>14</sup> Board-certified molecular geneticists followed the criteria

established by the American College of Medical Genetics and Genomics to characterize genomic variants. Pathogenic and likely pathogenic variants were included, whereas benign, likely benign, and variants of unknown significance were excluded. Tumor mutational burden (TMB)-High was defined as  $\geq 10$  mutations per megabase.<sup>15</sup> Genomic loss of heterozygosity (gLOH) was determined as previously described.<sup>16</sup>

## RNA Whole-Transcriptome Sequencing and Fusion Detection

Tumors were characterized as having high or low *ACP1* expression on the basis of the percentile of RNA transcripts per million (TPM;  $\geq 75$ th v  $< 25$ th) to allow for more granularity in data analysis across quartiles. All *LMPTP* transcripts were captured. FFPE specimens underwent pathology review to assess percent tumor content; a minimum of 10% of tumor content in the area for microdissection was required to enable enrichment and extraction of tumor-specific RNA. Illumina NovaSeq 6500 was used to sequence the whole transcriptome from patients to an average of 60M reads, as previously described.

## Gene Expression Profiling

Deconvolution of RNA expression was performed using *quATseq*<sup>17</sup> to estimate immune cell fractions comprising the TME. Pathway analysis was performed using gene set enrichment analysis<sup>18</sup> to assess the Hallmark collection of cancer pathways (MSigDB)<sup>19</sup> in *ACP1*-High (*Q4*) versus *ACP1*-Low (*Q1*) tumors. Potential sensitivity to immunotherapy (IO) treatment was assessed using a transcriptional signature previously shown to be predictive of response to the *PD-1* checkpoint blockade.<sup>20</sup>

## Immunohistochemistry

*PD-L1* protein expression was tested by immunohistochemistry (IHC; SP142 antibody). Staining was scored for intensity (0 = no staining; 1+ = weak, 2+ = moderate, 3+ = strong) and percentage (0%-100%). *PD-L1* positivity was determined if  $\geq 5\%$  of cancer cells demonstrated moderate (2+) membranous protein expression.

## Survival Analysis

Real-world overall survival (OS) data were sourced from an insurance claims repository, with calculations spanning from the date of initial diagnosis (on the basis of the first cancer-related International Classification of Diseases-10 code used) to either death or last contact or from the time of treatment initiation to either death or last contact. The stage of disease was not available in the database. Cox proportional hazard ratios (HRs) were calculated for each comparison group, and significance was determined by log-rank test  $P < .05$ .

## Statistical Analysis

The JMP V13.2.1 (SAS Institute, New York, NY), R Version 3.6.1 (R-project<sup>21</sup>), and standard Python packages (Pandas, NumPy, and SciPy) were used. Continuous data were analyzed using a Mann-Whitney *U* test, and categorical data were analyzed using chi-square or Fisher's exact test, with *P* values adjusted for multiple hypothesis testing using the Benjamini-Hochberg procedure, where appropriate.

## RESULTS

### Study Cohort and Patient Characteristics

The study cohort comprised 5,028 patients with a median age at specimen collection of 68 years (range, 35 to 90+). The majority of samples were derived from the prostate ( $n = 3,058$ , 60.8%), followed by distant metastasis (DM) sites ( $n = 1,307$ , 26%), LNM ( $n = 634$ , 12.6%), and 29 samples (0.6%) with an undetermined sequencing site. Appendix Tables A1 and A2 show the distribution of tumor biopsy sites.

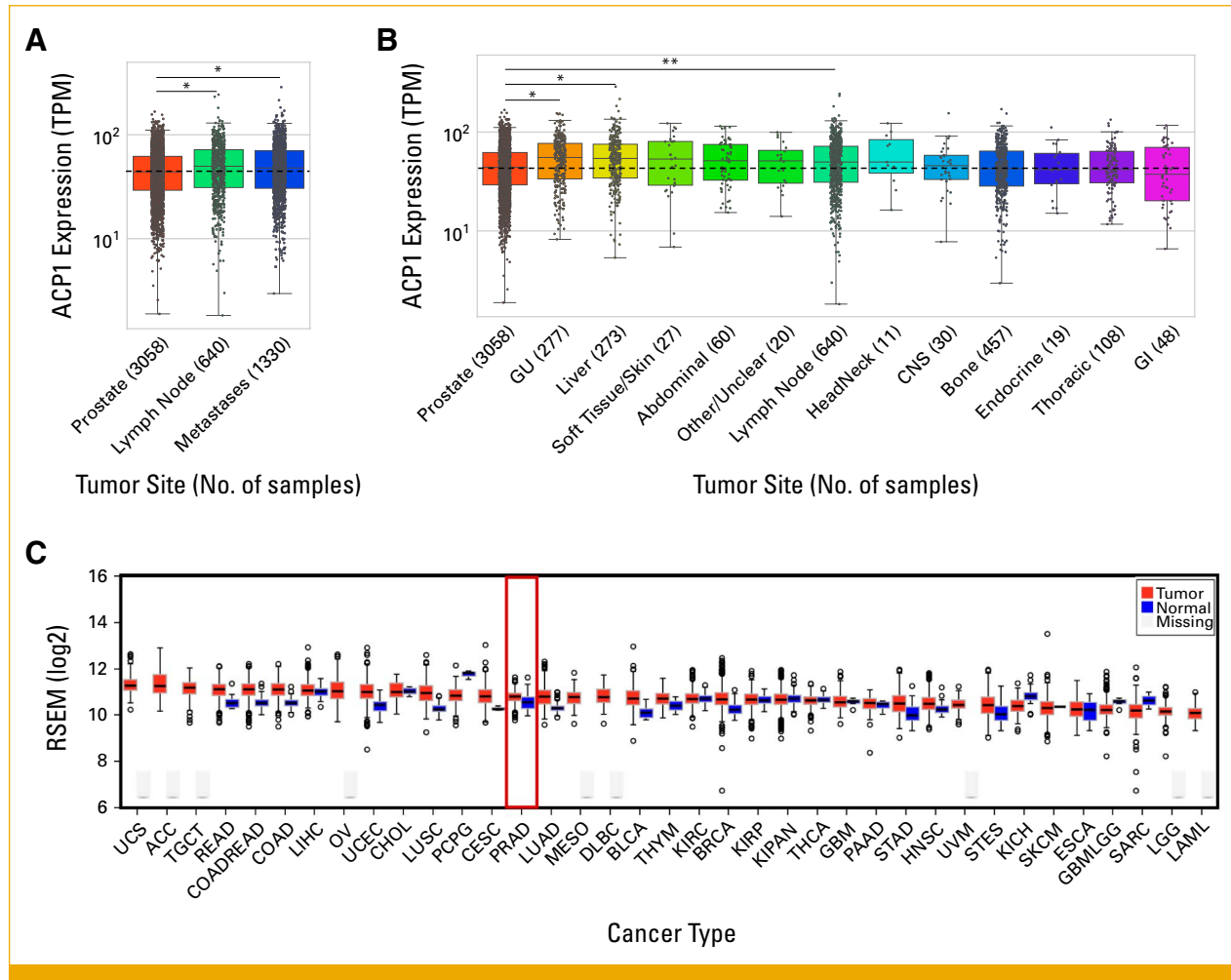
### ACP1 Expression Varies Across Tumor Biopsy Sites

*ACP1* expression varied by specimen site and was increased in LNM and DM compared with prostate tissue (49.8 and 47.9, respectively, v 44.1 TPM;  $P < .0001$  each; Fig 1A). Further analysis of DM sites revealed significantly higher *ACP1* expression in genitourinary and hepatic metastases compared with the primary prostate (55.4 and 54.1, respectively, v 44.1 TPM;  $P < .0001$  each) and the lowest median expression observed among GI metastases (37.4 v 44.1 TPM in prostate;  $P = .68$ ; Fig 1B). Among 29 patients who had a biopsy profiled from both the prostate and a metastatic site, *ACP1* expression was also higher in the metastatic site compared with the prostate sample (Appendix Table A3).

Analysis of various tumor types represented in the TCGA database suggests robust *ACP1* expression across several normal tissues (as seen in Fig 1C) and numerous tumor types (including pheochromocytoma/paranglioma, cholangiocarcinoma, liver hepatocellular carcinoma), with higher *ACP1* expression observed in many tumor types (including rectum adenocarcinoma, colon adenocarcinoma, uterine corpus endometrial carcinoma, and PRAD) compared with normal tissue (Fig 1C).

### DNA Mutational Profiles Associated With ACP1 Expression

We analyzed the DNA mutational profiles of prostate, LNM, and DM samples stratified by *ACP1* expression quartiles. Among the most frequent recurrent mutations observed in PC ( $> 3\%$  overall prevalence), *TP53* mutations were enriched in *ACP1*-*Q4* (37.9% v 27.0% in *ACP1*-*Q1*;  $P < .001$ ) among prostate samples but not LNM or DM (Fig 2). Most other DNA gene alterations were not significantly associated with *ACP1* expression. Prevalence of *AR*-*V7* alterations increased with *ACP1*



**FIG 1.** Transcriptional expression of *ACP1* in prostate cancer across tumor biopsy sites. (A) Differential expression of *ACP1* in tumor samples collected from prostate, lymph node, and any distant metastatic site (Metastases); (B) *ACP1* expression across individual metastatic sites. For (A) and (B), sample sizes are noted in parentheses for each tumor site. (C) Differential expression of *ACP1* across various cancer and normal tissues from the TCGA database (FireBrowse). TCGA abbreviations legend can be found in Appendix Table A5. *ACP1*, acid phosphatase 1; GU, genitourinary; RSEM, RNA-Seq by expectation-maximization; TCGA, the Cancer Genome Atlas Program; TPM, transcripts per million. \* $P < .0001$ , \*\* $P < .001$ .

expression in prostate samples (9.6% Q<sub>4</sub> v 2.9% Q<sub>1</sub>;  $P < .001$ ), with similar trends observed for LNM (46.8% Q<sub>4</sub> v 33.8% Q<sub>1</sub>;  $P = .75$ ) and DM samples (38.3% Q<sub>4</sub> v 26.7% Q<sub>1</sub>;  $P = .10$ ). *gLOH* was more frequent with increasing *ACP1* expression in DM (51.9% Q<sub>4</sub> v 34.3% Q<sub>1</sub>;  $P < .05$ ).

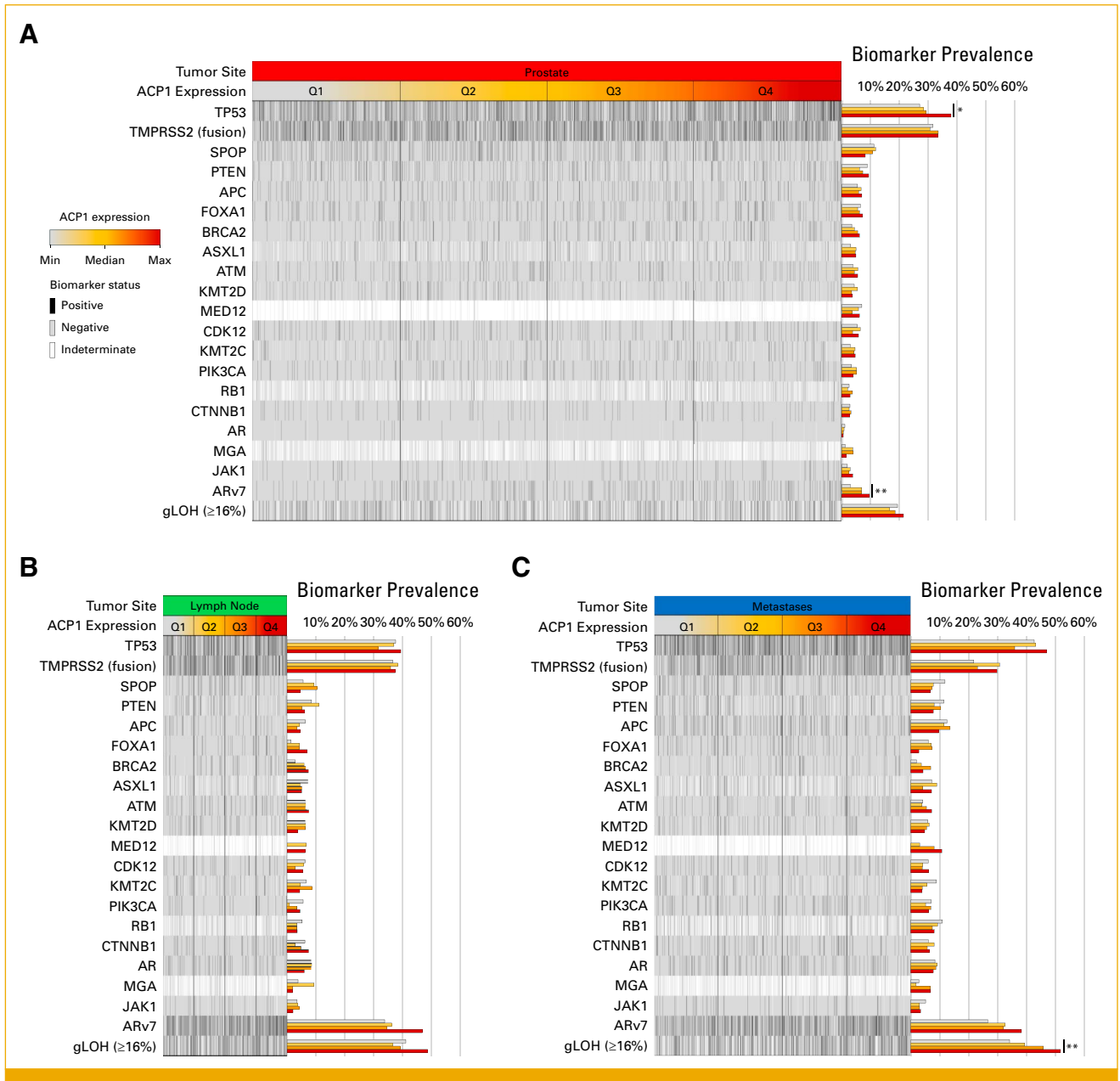
### Gene Expression Profiles Associated With *ACP1* Expression

Gene expression was similar across tumor sites, with most transcript levels increased among *ACP1*-High (Q<sub>4</sub>) compared with *ACP1*-Low (Q<sub>1</sub>) tumors (Figs 3A–3C). Pathways associated with cell cycle regulation (*E2F* targets, G<sub>2</sub>M checkpoint, myelocytomatosis oncogene [*MYC*] targets, and mitotic spindle) were enriched in *ACP1*-High tumors, along with oxidative phosphorylation and androgen response pathways. However, myogenesis, epithelial-mesenchymal transition, and tumor necrosis factor- $\alpha$  signaling via

the nuclear factor kappa-light-chain-enhancer of activated B-cell pathways were enriched in *ACP1*-Low tumors (Fig 3D). Transcriptomic signatures of neuroendocrine prostate cancer (*NEPC*) and androgen receptor (*AR*) signaling also increased with *ACP1* expression (Figs 3E and 3F).

### TMEs Associated With *ACP1* Expression

We then performed RNA deconvolution to estimate immune cell fractions in the TME. The total immune cell fraction increased with *ACP1* expression in prostate samples, with significantly increased fractions of macrophage M2, natural killers cells, and neutrophils, among others (Fig 4A). Among the cell types examined, the strongest positive and negative correlation with *ACP1* expression was observed for macrophage M2 and M1 cell fractions, respectively, suggestive of an immunosuppressive TME, and consistent with the strong negative correlation between *ACP1* expression and a T-cell–



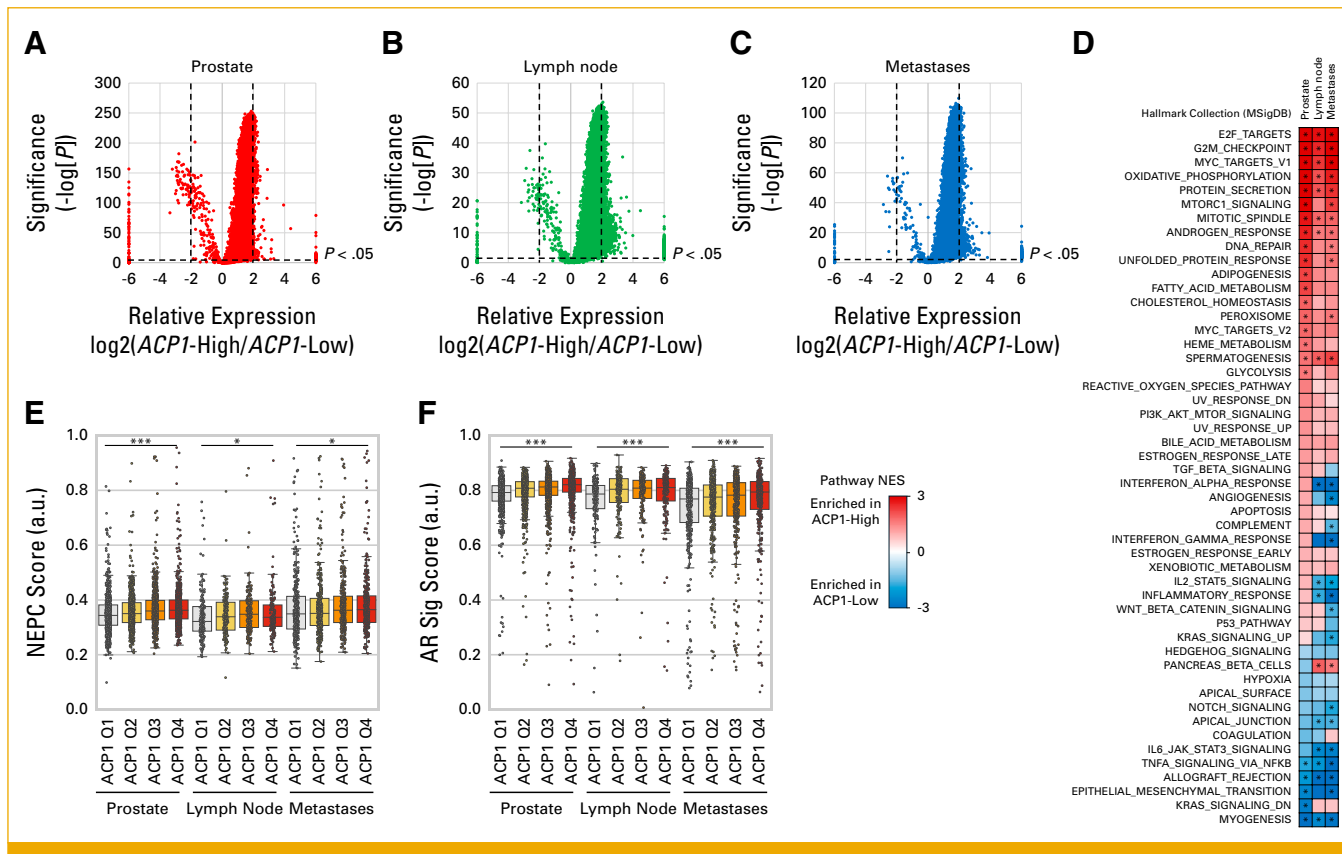
**FIG 2.** Genomic landscape associated with *ACP1* expression in prostate cancer by tumor site. Oncoprint of recurrent alterations occurring in >3% of the overall study among (A) prostate, (B) lymph node, and (C) metastasis subpopulations stratified by *ACP1* expression. *ACP1*, acid phosphatase 1; *AR*, androgen receptor; gLOH, genomic loss of heterozygosity. \* $P < .001$ , \*\* $P < .05$ .

inflamed transcriptional signature that is predictive of response to IO<sup>20</sup> (Fig 4B). Similar associations with *ACP1* expression were observed for LNM and DM. However, across tumor sites, the prevalence of IO-related biomarkers, such as *PD-L1* IHC, TMB, and mismatch repair deficient/microsatellite instability-high, was not significantly different among *ACP1* expression quartiles (Fig 4C).

### Clinical Outcomes Associated With *ACP1* Expression

To determine the potential prognostic and predictive utility of *ACP1* expression in PC, we evaluated real-world clinical

outcomes among patients with available insurance claim data to infer OS from the date of initial diagnosis or the start of treatment (Appendix Table A4). Although not statistically significant, patients with high *ACP1* expression had worse OS from the date of initial diagnosis among those with prostate tissue samples (Q4 v Q1: HR, 1.19 [95% CI, 0.99 to 1.42];  $P = .06$ ), with a similar trend observed among DM (HR, 1.12 [95% CI, 0.93 to 1.36];  $P = .22$ ) but not LNM (HR, 0.98 [95% CI, 0.74 to 1.29];  $P = .87$ ; Fig 5A). Across tumor sites, *ACP1* expression was not associated with differences in OS from the start of first taxane chemotherapy (total n = 883; docetaxel or cabazitaxel) or AR pathway inhibitor (total n = 1,149;



**FIG 3.** *ACP1* expression is associated with changes in cell cycle and metabolic pathways. (A-C) Volcano plot of differentially expressed genes in *ACP1*-High versus *ACP1*-Low samples across tumor sites. (D) Gene set enrichment analysis of the Hallmark collection of gene sets (MSigDB). (E and F) NEPC and AR signaling transcriptional expression scores across *ACP1* quartile subgroups by tumor site. *ACP1*, acid phosphatase 1; *AR*, androgen receptor; MSigDB, Molecular Signatures Database; NEPC, neuroendocrine prostate cancer; NES, not elsewhere specified; NK, natural killers.

abiraterone or enzalutamide) or IO (pembrolizumab [most common], nivolumab, ipilimumab; total n = 98; Fig 5B).

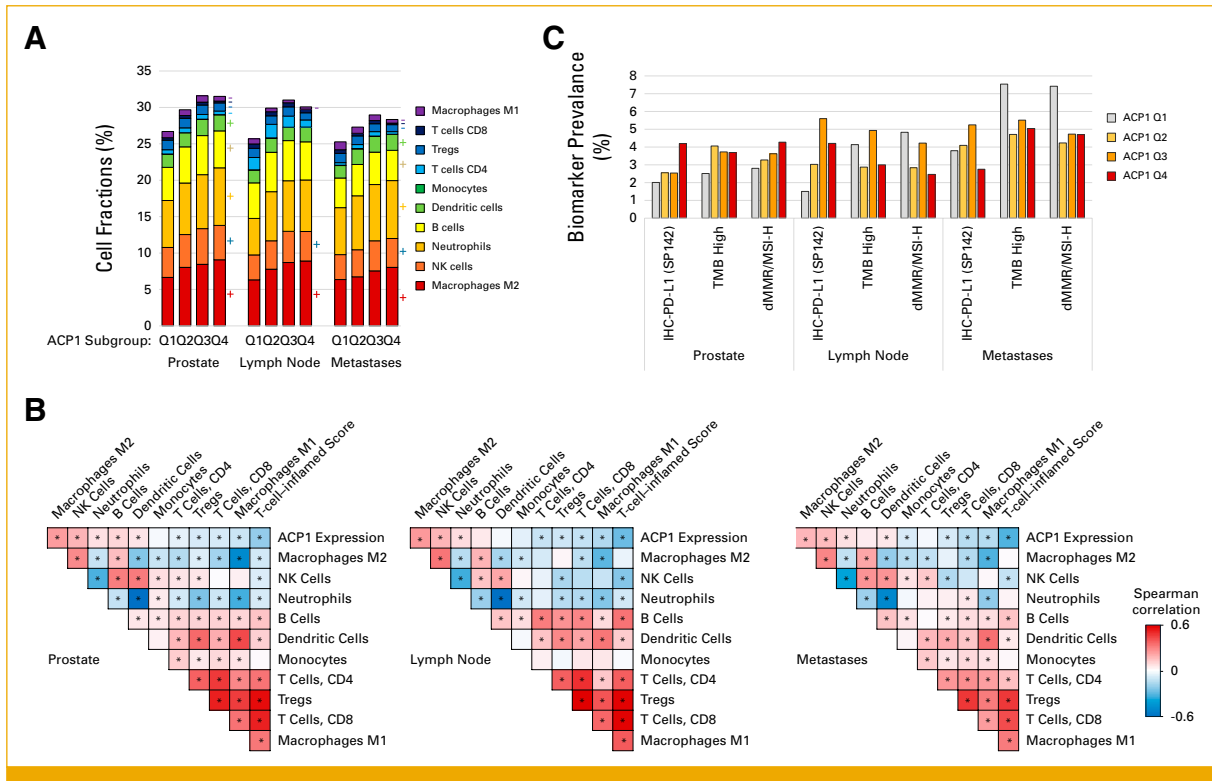
## DISCUSSION

In this study, we comprehensively evaluate *ACP1* expression across PC tumors and its impact on disease outcomes. To our knowledge, this is the largest study to date investigating *ACP1* expression in PC with a data set comprising over 5,000 patients having undergone in-depth molecular profiling.

First, we demonstrate that *ACP1* expression was higher in PC tissue compared with normal prostate tissue, concordant with a previous study.<sup>9</sup> We also found that *ACP1* expression was increased in LNM and DM compared with primary prostate tissue. This suggests that *ACP1* expression is associated with more aggressive disease. Indeed, higher *ACP1* expression was demonstrated to be significantly associated with aggressive behavior, such as an increased biochemical, local recurrence, castration resistance, and cancer-related death.<sup>9,11</sup> The association between a high *ACP1* and PC severity was also concluded in previous studies as a higher *ACP1* reflected higher Gleason scores and the presence of metastasis.<sup>12</sup> Moreover, we found that *ACP1* expression was

significantly higher in hepatic metastases. This further highlights the association of *ACP1* with worse outcomes in PC, given that the liver is the most lethal metastatic PC site with an ominous prognosis and a median OS of 10-14 months.<sup>22-25</sup> Liver metastases in PC were found to have aggressive genomic features, including *MYC* amplification, *PTEN* deletion, *PIK3CB* amplification, *RB-1* loss, and *APC* mutations, leading to poor outcomes.<sup>26,27</sup> Other studies also highlighted the re-expression of E-cadherin (epithelial) in the liver because of the interaction of metastatic PC cells and hepatocytes that increases the chemoresistance of cancerous cells and thus the poor prognosis of patients with liver metastasis.<sup>28,29</sup> While the presence of liver metastasis is associated with worse outcomes, it is still understudied, and standard treatments offer few benefits for these patients.<sup>30</sup> Thus, given the association of higher *ACP1* expression with advanced and more aggressive disease, notably in the liver, it is mechanistically logical for future projects to investigate *ACP1* function and implications of therapeutic targeting in this aggressive phenotype.

Second, we demonstrate that *TP53* alterations were enriched in *ACP1*-High prostate tumors. However, we did not observe the same correlation for LNM and DM. This discrepancy is



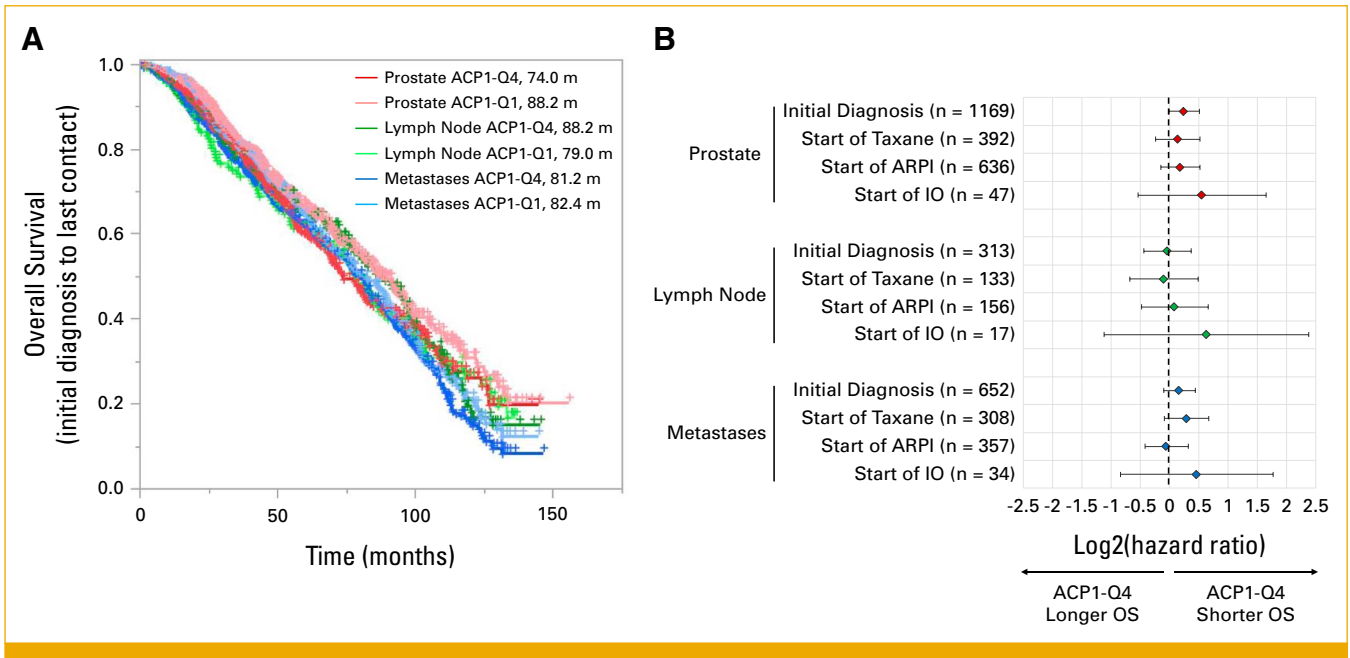
**FIG 4.** *ACP1* expression is associated with cold tumor microenvironments and infiltration of immunosuppression cell types. (A) Median immune cell fractions for populations estimated by RNA deconvolution (quantIseq); + and - indicate statistically significant ( $P < .05$ ) increases or decreases, respectively, among *ACP1* Q4 compared with *ACP1* Q1 subpopulations. (B) Matrix of Spearman correlations for *ACP1* expression, immune cell types, and a T-cell-inflamed score predictive of response to IO. (C) Prevalence of common IO-related biomarkers across *ACP1* quartile subgroups by tumor site. *ACP1*, acid phosphatase 1; dMMR/MSI-H, mismatch repair-deficient/microsatellite instability-high; IHC, immunohistochemistry; IO, immunotherapy; TMB, tumor mutational burden. \* $P < .05$ .

likely due to the differing prevalence of *TP53* alterations across these tissue types. In DM, the *TP53* alteration rate was 40%-50% across *ACP1* expression quartiles and 30%-40% across *ACP1* expression quartiles in LNM. However, in prostate tumors, except for the highest *ACP1* expression quartile, *TP53* prevalence was generally  $<30\%$ . This suggests that *TP53* alterations may play a more prominent role in metastatic progression, regardless of *ACP1* expression levels, whereas in primary prostate tumors, high *ACP1* expression may be associated with an increased likelihood of *TP53* alterations. Indeed, a comprehensive analysis of *TP53* mutations and their impact on survival of patients with PC concluded a negative prognosis of these mutations.<sup>31</sup> While *TP53* mutations are detected in about 10% of primary PC samples, their frequency may be as high as 50% in advanced or metastatic PC samples.<sup>32,33</sup> In addition, one of the most common mutations detected in liver metastasis of PC is *TP53*,<sup>34</sup> which is the most lethal site of metastasis, as previously discussed. Genomic interrogation also detected increased *AR-V7* prevalence among increasing quartiles of *ACP1* expression. This mutation has been linked to more aggressive disease, castration resistance, and shorter survival.<sup>35,36</sup> *AR-V7* is typically an acquired mutation that has been associated with resistance to enzalutamide and

abiraterone.<sup>37-40</sup> In our data set, 10% of primary prostate tumors had *AR-V7* and prevalence increased among increasing quartiles of *ACP1* expression, suggesting inherent ADT resistance in such tumors. Additional studies are warranted to further investigate the relevance of such alterations and strategies to therapeutically target them. Finally, we found that *gLOH* was more frequent with increasing *ACP1* expression in DMs. Previous studies concluded that *gLOH* is often detected in patients with PC having a mutation in homologous recombination repair<sup>41,42</sup> and could be a marker of response to PARP inhibition or platinum chemotherapy.<sup>43-46</sup>

Next, we demonstrated that *ACP1* expression is associated with cell cycle pathway alterations (*E2F* targets, *G2M* checkpoint, *MYC* targets, and mitotic spindle). This is especially intriguing as new molecular target agents have been recently investigated in the setting of advanced PC, such as the use of cyclin-dependent kinase 4 and 6 inhibitors.<sup>47,48</sup> Current strategies to target this pathway have proven to be unsuccessful in PC, and alternative methods or biomarker-based strategies are warranted to yield clinically meaningful results. Thus, the importance of increasing the knowledge of the mutational profile in PC is guiding the development of





**FIG 5.** Real-world OS among patients stratified by *ACP1* expression and tumor biopsy site. (A) OS from the date of biopsy for patients with *ACP1*-High (Q4) and *ACP1*-Low (Q1) tumors by biopsy site. (B) Forest plot of overall survival from the date of biopsy (same as (A)), the start of taxane therapy, the start of ARPI, and the start of IO. *ACP1*, acid phosphatase 1; ARPI, androgen receptor pathway inhibitors; IO, immunotherapy; OS, overall survival. \* $P < .05$ , \*\* $P < .001$ .

targeted treatments. Furthermore, we see elevated AR and NEPC signature scores in *APC1*-High tumors, suggesting an admixture of these tumors, which can be seen in later stages.

We also concluded that *ACP1* expression is associated with an immunosuppressive environment, which was consistent with the strong negative correlation between *ACP1* expression and a T-cell-inflamed transcriptional signature predictive of IO response. However, our analysis is crude and lacks single-cell level and spatial assessment within the TME.

Finally, patients with high *ACP1* expression had worse OS, concordant with previous studies.<sup>9,49</sup> The analysis of two large independent data sets showed that high *ACP1* expression correlated with substantially lower survival probability.<sup>12</sup> These findings align with molecular insights we previously discussed, such that higher *ACP1* was associated with an increase in liver metastasis, *TP53* alterations, and NEPC signature. These conclusions emphasize the potential prognostic function of *ACP1* and potential predictability for survival.

Overall, our findings provide a rationale for novel therapeutic targeting of *ACP1*-High tumors through *LMPTP* inhibition, a landscape that has been recently evolving rapidly. Initially, *LMPTP* was identified as a promising treatment target for metabolic diseases, particularly type 2 diabetes.<sup>50</sup> Thereafter, several promising small-molecule inhibitors have been identified and are in various stages of preclinical

development for metabolic disorders and cancer. The development of *LMPTP* inhibitors has faced several challenges, including achieving high selectivity for *LMPTP* over other phosphatases and optimizing pharmacokinetic properties. However, recent advances in structure-based drug design and high-throughput screening have led to the discovery of more potent and selective compounds, such as compound 13, a purine-based *LMPTP* inhibitor with favorable pharmacokinetic properties, including good oral bioavailability in mice and over 100-fold selectivity for *LMPTP* compared with other phosphatases.<sup>51</sup>

In the context of PC, Stanford et al<sup>12</sup> recently showed promising results for *LMPTP* inhibition as a potential therapeutic strategy as *LMPTP* deletion and pharmacologic inhibition reduced the in vitro invasiveness, anchorage-independent growth, and growth in the bone of the PC cells. Furthermore, targeting *LMPTP* could sensitize PC cells to taxane chemotherapy by impairing the cells' ability to respond to drug-induced ROS-dependent insults,<sup>12</sup> opening up new avenues for combination treatments. The researchers used both genetic and pharmacologic approaches to inhibit *LMPTP*,<sup>12</sup> including the application of the small-molecule inhibitor developed in their previous work.<sup>51</sup>

These advancements in *LMPTP* inhibitor development, from initial applications in metabolic disorders to recent findings in cancer research, highlight the versatility and potential of these compounds. The ability to modulate both cellular metabolism and signaling pathways makes *LMPTP* an

attractive target for further development, notably in clinical trials for PC.

There are several limitations to our study. Given the retrospective nature of our work, selection bias might have occurred. We used insurance claims as a surrogate for clinical outcomes, and the population might be skewed to advanced/metastatic disease. Future prospective studies with larger populations and longer follow-up are warranted to establish the usefulness of the *ACP1* gene as a prognostic factor in PC.

## AFFILIATIONS

<sup>1</sup>Glickman Urological and Kidney Institute, Cleveland Clinic, Cleveland, OH

<sup>2</sup>Caris Life Sciences, Phoenix, AZ

<sup>3</sup>Department of Medicine, University of California San Diego School of Medicine, La Jolla, CA

<sup>4</sup>Huntsman Cancer Institute, Salt Lake City, UT

<sup>5</sup>Department of Urology, University of California, San Diego, La Jolla, CA

<sup>6</sup>Miami Cancer Institute, Baptist Health South Florida, Miami, FL

## CORRESPONDING AUTHOR

Rana R. McKay, MD; Twitter: @DrRanaMcKay; e-mail: rmckay@health.ucsd.edu.

## PRIOR PRESENTATION

Presented in part at ASCO Annual Meeting 2024, May 31-June 4, 2024, Chicago, IL.

## AUTHOR CONTRIBUTIONS

**Conception and design:** Stephanie M. Stanford, Neeraj Agarwal, Nunzio Bottini, Rana R. McKay

**Administrative support:** Neeraj Agarwal

**Provision of study materials or patients:** Neeraj Agarwal, Rohan Garje

**Collection and assembly of data:** Andrew Elliott, Neeraj Agarwal, Rohan Garje, Rana R. McKay

**Data analysis and interpretation:** Nour Abdallah, Andrew Elliott, Norm Smith, Stephanie M. Stanford, Neeraj Agarwal, Aditya Bagrodia, Rohan Garje, Rana R. McKay

**Manuscript writing:** All authors

**Final approval of manuscript:** All authors

**Accountable for all aspects of the work:** All authors

## AUTHORS' DISCLOSURES OF POTENTIAL CONFLICTS OF INTEREST

The following represents disclosure information provided by authors of this manuscript. All relationships are considered compensated unless otherwise noted. Relationships are self-held unless noted. I = Immediate Family Member, Inst = My Institution. Relationships may not relate to the subject matter of this manuscript. For more information

In conclusion, to our knowledge, in the largest study investigating the significance of *ACP1* expression in PC, we demonstrate that a higher *ACP1* expression is associated with a distinct molecular profile enriched for *TP53*, *AR-V7*, and *gLOH* alterations and with a cold TME. Patients with *ACP1*-High tumors also had worse clinical outcomes. While we provide a rationale for the novel therapeutic targeting of *ACP1*, future studies are warranted to further explore its potential for the treatment of primary and metastatic prostate tumors.

about ASCO's conflict of interest policy, please refer to [www.asco.org/rwc](http://www.asco.org/rwc) or [ascopubs.org/po/author-center](http://ascopubs.org/po/author-center).

Open Payments is a public database containing information reported by companies about payments made to US-licensed physicians ([Open Payments](http://OpenPayments.org)).

**Andrew Elliott**

**Employment:** Caris Life Sciences

**Norm Smith**

**Employment:** Caris Life Sciences

**Stephanie M. Stanford**

**Employment:** Knoubis Bio, Inc

**Stock and Other Ownership Interests:** Knoubis Bio, Inc

**Consulting or Advisory Role:** Nerio Therapeutics, Knoubis Bio, Inc

**Other Relationship:** Nerio Therapeutics

**Neeraj Agarwal**

**Research Funding:** Bayer (Inst), Bristol Myers Squibb (Inst), Takeda (Inst), Pfizer (Inst), Exelixis (Inst), Amgen (Inst), AstraZeneca (Inst), Calithera Biosciences (Inst), Celldex (Inst), Eisai (Inst), Genentech (Inst), Immunomedics (Inst), Janssen (Inst), Merck (Inst), Lilly (Inst), Nektar (Inst), ORIC Pharmaceuticals (Inst), CRISPR Therapeutics (Inst), Arvinas (Inst), Gilead Sciences (Inst)

**Travel, Accommodations, Expenses:** Pfizer, Exelixis

**Aditya Bagrodia**

**Consulting or Advisory Role:** Veracyte

**Rohan Garje**

**Research Funding:** Exelixis (Inst), Janssen Oncology (Inst)

**Nunzio Bottini**

**Consulting or Advisory Role:** Nerio Therapeutics, Thirona Biosciences

**Patents, Royalties, Other Intellectual Property:** Patents and patent applications unrelated to this work

**Rana R. McKay**

**Consulting or Advisory Role:** Janssen, Novartis, Tempus, Exelixis, Pfizer, Bristol Myers Squibb, Astellas Medivation, Dendreon, Bayer, Sanofi, Merck, Vividion Therapeutics, Calithera Biosciences, AstraZeneca, Myovant Sciences, Caris Life Sciences, Sorrento Therapeutics, AVEO, Seagen, Telix Pharmaceuticals, Lilly, Blue Earth Diagnostics, Ambrx, Arcus Biosciences, Sumitomo Pharma Oncology, Eisai, NeoMorph

**Research Funding:** Bayer (Inst), Tempus (Inst), AstraZeneca (Inst), Exelixis (Inst), Bristol Myers Squibb (Inst), Oncternal Therapeutics (Inst), Artera (Inst)

No other potential conflicts of interest were reported.

## REFERENCES

1. Siegel RL, Miller KD, Wagle NS, et al: Cancer statistics, 2023. *CA Cancer J Clin* 73:17-48, 2023
2. Keyes M, Crook J, Morton G, et al: Treatment options for localized prostate cancer. *Can Fam Physician* 59:1269-1274, 2013
3. Lowrance W, Dreicer R, Jarrard DF, et al: Updates to advanced prostate cancer: AUA/SUO guideline (2023). *J Urol* 209:1082-1090, 2023
4. Merseburger AS, Alcaraz A, von Klot CA: Androgen deprivation therapy as backbone therapy in the management of prostate cancer. *Onco Targets Ther* 9:7263-7274, 2016
5. Karantanos T, Corn PG, Thompson TC: Prostate cancer progression after androgen deprivation therapy: Mechanisms of castrate resistance and novel therapeutic approaches. *Oncogene* 32:5501-5511, 2013

6. Alho I, Costa L, Bicho M, et al: The role of low-molecular-weight protein tyrosine phosphatase (LMW-PTP ACP1) in oncogenesis. *Tumour Biol* 34:1979-1989, 2013
7. Ferreira PA, Ruela-de-Sousa RR, Queiroz KC, et al: Knocking down low molecular weight protein tyrosine phosphatase (LMW-PTP) reverts chemoresistance through inactivation of Src and Bcr-Abl proteins. *PLoS One* 7:e44312, 2012
8. Hoekstra E, Kodach LL, Das AM, et al: Low molecular weight protein tyrosine phosphatase (LMWPTP) upregulation mediates malignant potential in colorectal cancer. *Oncotarget* 6:8300-8312, 2015
9. Ruela-de-Sousa RR, Hoekstra E, Hoogland AM, et al: Low-molecular-weight protein tyrosine phosphatase predicts prostate cancer outcome by increasing the metastatic potential. *Eur Urol* 69: 710-719, 2016
10. Malentacchi F, Marzocchini R, Gelmini S, et al: Up-regulated expression of low molecular weight protein tyrosine phosphatases in different human cancers. *Biochem Biophys Res Commun* 334: 875-883, 2005
11. Miyoshi Y, Ohtaka M, Kawahara T, et al: Prediction of time to castration-resistant prostate cancer using low-molecular-weight protein tyrosine phosphatase expression for men with metastatic hormone-naïve prostate cancer. *Urol Int* 102:37-42, 2019
12. Stanford SM, Nguyen TP, Chang J, et al: Targeting prostate tumor low-molecular weight tyrosine phosphatase for oxidation-sensitizing therapy. *Sci Adv* 10:eadg7887, 2024
13. Caselli A, Paoli P, Santi A, et al: Low molecular weight protein tyrosine phosphatase: Multifaceted functions of an evolutionarily conserved enzyme. *Biochim Biophys Acta* 1864:1339-1355, 2016
14. Florou V, Elliott A, Bailey MH, et al: Comparative genomic analysis of pancreatic acinar cell carcinoma (PACC) and pancreatic ductal adenocarcinoma (PDAC) unveils new actionable genomic aberrations in PACC. *Clin Cancer Res* 29:3408-3417, 2023
15. Marabelle A, Fakih M, Lopez J, et al: Association of tumour mutational burden with outcomes in patients with advanced solid tumours treated with pembrolizumab: Prospective biomarker analysis of the multicohort, open-label, phase 2 KEYNOTE-158 study. *Lancet Oncol* 21:1353-1365, 2020
16. Akinjayan FA, Morecroft R, Phillipps J, et al: Homologous recombination deficiency (HRD) in cutaneous oncology. *Int J Mol Sci* 24:10771, 2023
17. Finotello F, Mayer C, Plattner C, et al: Molecular and pharmacological modulators of the tumor immune contexture revealed by deconvolution of RNA-seq data. *Genome Med* 11:34, 2019
18. Subramanian A, Tamayo P, Mootha VK, et al: Gene set enrichment analysis: A knowledge-based approach for interpreting genome-wide expression profiles. *Proc Natl Acad Sci U S A* 102: 15545-15550, 2005
19. Liberzon A, Birger C, Thorvaldsdóttir H, et al: The Molecular Signatures Database (MSigDB) hallmark gene set collection. *Cell Syst* 1:417-425, 2015
20. Cristescu R, Mogg R, Ayers M, et al: Pan-tumor genomic biomarkers for PD-1 checkpoint blockade-based immunotherapy. *Science* 362:ear3593, 2018
21. R Project for Statistical Computing. <https://www.R-project.org>
22. Halabi S, Kelly WK, Ma H, et al: Meta-analysis evaluating the impact of site of metastasis on overall survival in men with castration-resistant prostate cancer. *J Clin Oncol* 34:1652-1659, 2016
23. Ma B, Wells A, Wei L, et al: Prostate cancer liver metastasis: Dormancy and resistance to therapy. *Semin Cancer Biol* 71:2-9, 2021
24. Pezaro C, Omlin A, Lorente D, et al: Visceral disease in castration-resistant prostate cancer. *Eur Urol* 65:270-273, 2014
25. Shou J, Zhang Q, Wang S, et al: The prognosis of different distant metastases pattern in prostate cancer: A population based retrospective study. *Prostate* 78:491-497, 2018
26. Alshalalfa M, Seldon C, Franco I, et al: Clinicogenomic characterization of prostate cancer liver metastases. *Prostate Cancer Prostatic Dis* 25:366-369, 2022
27. Nguyen B, Fong C, Luthra A, et al: Genomic characterization of metastatic patterns from prospective clinical sequencing of 25,000 patients. *Cell* 185:563-575.e11, 2022
28. Ma B, Wheeler SE, Clark AM, et al: Liver protects metastatic prostate cancer from induced death by activating E-cadherin signaling. *Hepatology* 64:1725-1742, 2016
29. Yates CC, Shepard CR, Stolz DB, et al: Co-culturing human prostate carcinoma cells with hepatocytes leads to increased expression of E-cadherin. *Br J Cancer* 96:1246-1252, 2007
30. Shiner A, Sperandio RC, Naimi M, et al: Prostate cancer liver metastasis: An ominous metastatic site in need of distinct management strategies. *J Clin Med* 13:734, 2024
31. Zhou J, Lai Y, Peng S, et al: Comprehensive analysis of TP53 and SPOP mutations and their impact on survival in metastatic prostate cancer. *Front Oncol* 12:957404, 2022
32. Robinson D, Van Allen EM, Wu YM, et al: Integrative clinical genomics of advanced prostate cancer. *Cell* 162:454, 2015
33. Cancer Genome Atlas Research Network: The molecular taxonomy of primary prostate cancer. *Cell* 163:1011-1025, 2015
34. Casado C, Caputo S, Jaeger EB, et al: Genomic alterations in patients with prostate cancer with liver metastases. *J Clin Oncol* 41, 2023 (suppl 6; abstr 248)
35. Li H, Wang Z, Tang K, et al: Prognostic value of androgen receptor splice variant 7 in the treatment of castration-resistant prostate cancer with next generation androgen receptor signal inhibition: A systematic review and meta-analysis. *Eur Urol Focus* 4:529-539, 2018
36. Hörnberg E, Ylitalo EB, Crmalic S, et al: Expression of androgen receptor splice variants in prostate cancer bone metastases is associated with castration-resistance and short survival. *PLoS One* 6: e19059, 2011
37. Sobhani N, Neeli PK, D'Angelo A, et al: AR-V7 in metastatic prostate cancer: A strategy beyond redemption. *Int J Mol Sci* 22:5515, 2021
38. Nakazawa M, Antonarakis ES, Luo J: Androgen receptor splice variants in the era of enzalutamide and abiraterone. *Horm Cancer* 5:265-273, 2014
39. Zhu Y, Dalrymple SL, Coleman I, et al: Role of androgen receptor splice variant-7 (AR-V7) in prostate cancer resistance to 2nd-generation androgen receptor signaling inhibitors. *Oncogene* 39: 6935-6949, 2020
40. Antonarakis ES, Lu C, Wang H, et al: AR-V7 and resistance to enzalutamide and abiraterone in prostate cancer. *N Engl J Med* 371:1028-1038, 2014
41. Pritchard CC, Mateo J, Walsh MF, et al: Inherited DNA-repair gene mutations in men with metastatic prostate cancer. *N Engl J Med* 375:443-453, 2016
42. Chung JH, Dewal N, Sokol E, et al: Prospective comprehensive genomic profiling of primary and metastatic prostate tumors. *JCO Precis Oncol* 10.1200/PO.18.00283
43. Mateo J, Carreira S, Sandhu S, et al: DNA-repair defects and olaparib in metastatic prostate cancer. *N Engl J Med* 373:1697-1708, 2015
44. Cheng HH, Pritchard CC, Boyd T, et al: Biallelic inactivation of BRCA2 in platinum-sensitive metastatic castration-resistant prostate cancer. *Eur Urol* 69:992-995, 2016
45. Pomerantz MM, Spisák S, Jia L, et al: The association between germline BRCA2 variants and sensitivity to platinum-based chemotherapy among men with metastatic prostate cancer. *Cancer* 123: 3532-3539, 2017
46. De Sarkar N, Dasgupta S, Chatterjee P, et al: Genomic attributes of homology-directed DNA repair deficiency in metastatic prostate cancer. *JCI Insight* 6:e152789, 2021
47. Piombino C, Oltrecchi M, Tonni E, et al: De novo metastatic prostate cancer: Are we moving toward a personalized treatment? *Cancers (Basel)* 15:4945, 2023
48. Jani C, Abdallah N, Chrysafis P, et al: New drug approvals in prostate cancer and their effect on the treatment landscape. *Clin Adv Hematol Oncol* 21:321-340, 2023
49. Ohtaka M, Miyoshi Y, Kawahara T, et al: Low-molecular-weight protein tyrosine phosphatase expression as a prognostic factor for men with metastatic hormone-naïve prostate cancer. *Urol Oncol* 35:607.e9-607.e14, 2017
50. Stanford SM, Aleshin AE, Zhang V, et al: Diabetes reversal by inhibition of the low-molecular-weight tyrosine phosphatase. *Nat Chem Biol* 13:624-632, 2017
51. Stanford SM, Diaz MA, Ardecky RJ, et al: Discovery of orally bioavailable purine-based inhibitors of the low-molecular-weight protein tyrosine phosphatase. *J Med Chem* 64:5645-5653, 2021

## APPENDIX

**TABLE A1.** Distribution of Tumor Biopsy Sites and Corresponding Median Age

Tumor Biopsy Site	Total Samples, No. (%)	Age, Years, Median (range)	<i>P</i>
Overall	5,028 (100)	68 (35 to 90+)	—
Prostate	3,058 (60.8)	67 (35 to 90+)	<.0001
Lymph node	634 (12.6)	69 (43 to 90+)	
Metastases	1,307 (26.0)	71 (39 to 90+)	
Unclear	29 (0.6)	72.5 (45 to 90+)	

**TABLE A2.** Distribution of Tumor Biopsy Sites

Tumor Biopsy Site	Total Samples, No.	Total, %
Prostate	3,058	60.82
Lymph node	640	12.73
Bone	457	9.09
GU	277	5.51
Liver	273	5.43
Thoracic	108	2.15
Abdominal	60	1.19
GI	48	0.96
CNS	30	0.60
Soft tissue/skin	27	0.54
Other/unclear	20	0.40
Endocrine	19	0.38
Head neck	11	0.22

Abbreviation: GU, genitourinary.

**TABLE A3.** Average Fold Change of *ACP1* Expression in the Metastatic Sample Relative to the Prostate Sample

Metastatic Site	Patients, No.	<i>ACP1</i> Fold Change Relative to Prostate
Bone	11	1.48
Lymph node	8	1.31
Liver	7	1.45
Genitourinary	3	2.36

Abbreviation: *ACP1*, acid phosphatase 1.

**TABLE A4.** Overall Survival of Patients From the Date of Initial Diagnosis or the Start of Treatment According to *ACP1* Expression

Site	Metric	Samples, No.	Hazard Ratio	Lower	Upper	<i>P</i>
Prostate	Initial diagnosis	1,169	1.19	0.99	1.42	.06
	Taxane	392	1.10	0.85	1.44	.46
	ARPI	636	1.14	0.90	1.44	.27
	IO	47	1.47	0.69	3.14	.32
Lymph node	Initial diagnosis	313	0.98	0.74	1.29	.87
	Taxane	133	0.93	0.62	1.40	.74
	ARPI	156	1.06	0.72	1.58	.76
	IO	17	1.55	0.46	5.23	.48
Metastases	Initial diagnosis	652	1.12	0.93	1.36	.22
	Taxane	308	1.22	0.94	1.59	.13
	ARPI	357	0.97	0.75	1.25	.79
	IO	34	1.38	0.56	3.41	.48

Abbreviations: *ACP1*, acid phosphatase 1; ARPI, androgen receptor pathway inhibitor; IO, immunotherapy.

**TABLE A5. TCGA Abbreviations**

TCGA Abbreviation	Cancer Type
ACC	Adrenocortical carcinoma
BLCA	Bladder urothelial carcinoma
BRCA	Breast invasive carcinoma
CESC	Cervical squamous cell carcinoma and endocervical adenocarcinoma
CHOL	Cholangiocarcinoma
COAD	Colon adenocarcinoma
COADREAD	Colorectal adenocarcinoma
DLBC	Lymphoid neoplasm diffuse large B-cell lymphoma
ESCA	Esophageal carcinoma
GBM	Glioblastoma multiforme
GBMLGG	Glioma
HNSC	Head and neck squamous cell carcinoma
KICH	Kidney chromophobe
KIRC	Kidney renal clear cell carcinoma
KIPAN	Pan-kidney cohort (KICH + KIRC + KIRP)
KIRP	Kidney renal papillary cell carcinoma
LAML	Acute myeloid leukemia
LGG	Brain lower grade glioma
LIHC	Liver hepatocellular carcinoma
LUAD	Lung adenocarcinoma
LUSC	Lung squamous cell carcinoma
MESO	Mesothelioma
OV	Ovarian serous cystadenocarcinoma
PAAD	Pancreatic adenocarcinoma
PCPG	Pheochromocytoma and paraganglioma
PRAD	Prostate adenocarcinoma
READ	Rectum adenocarcinoma
SARC	Sarcoma
SKCM	Skin cutaneous melanoma
STAD	Stomach adenocarcinoma
STES	Stomach and esophageal carcinoma
TGCT	Testicular germ cell tumors
THCA	Thyroid carcinoma
THYM	Thymoma
UCEC	Uterine corpus endometrial carcinoma
UCS	Uterine carcinosarcoma
UVM	Uveal melanoma

Abbreviation: TCGA, the Cancer Genome Atlas Program.