

# UC Berkeley

## Technical Completion Reports

### Title

Development of Biosensors for Real Time Analysis of Perchlorate in Water

### Permalink

<https://escholarship.org/uc/item/8mv9988f>

### Authors

Frankenberger, William T  
Okeke, Benedict C  
Cheng, Quan Jason

### Publication Date

2006-09-01

## **Development of Biosensors for Real Time Analysis of Perchlorate in Water**

### **William T. Frankenberger Jr. (P.I.)**

Department of Environmental Sciences, University of California, Riverside CA

*Phone: 951- 827-3405*

*Fax 951-827-2954*

[william.frankenberger@ucr.edu](mailto:william.frankenberger@ucr.edu)

<http://envisci.ucr.edu/faculty/frankenberger/default.html>

### **Benedict C. Okeke (Co. P.I.)**

Environmental Sciences, UC, Riverside.

### **Quan Jason Cheng (Co. P.I.)**

Department of Chemistry, UC, Riverside

**Project No. W-985**

**September, 2006**

## Abstract

Perchlorate ( $\text{ClO}_4^-$ ) contamination of ground water is a widespread problem in the U.S., which can adversely affect human health and wildlife. Current methods for detecting and quantifying  $\text{ClO}_4^-$  in water are time consuming, expensive, and subject to error due to complex procedures and various interferences. Thus, there is an urgent need to develop a method that can accurately detect and measure low concentrations of  $\text{ClO}_4^-$  in the field. This study reports the construction of a  $\text{ClO}_4^-$ -reductase based biosensor for rapid determination of  $\text{ClO}_4^-$  in water. Using a 3 mm GCE (glass carbon electrode), we successfully constructed a  $\text{ClO}_4^-$  sensing bio-electrode by coating an aliquot of the enzyme on nafion (ion-exchange matrix) layer pre-coated on the polished surface of the GCE. Amperometric [i/t] measurements revealed linear increases in current in relation to time and  $\text{ClO}_4^-$  concentration. The biosensor responded strongly to  $\text{ClO}_4^-$  at concentrations as low as 1  $\mu\text{g/L}$  and the sensor displayed a linear response to  $\text{ClO}_4^-$  concentrations in the range 25 to 100  $\mu\text{g/L}$ . Linear response time to  $\text{ClO}_4^-$  at 100  $\mu\text{g/L}$  was approximately  $111 \pm 28$  seconds. Kinetic evaluation of the sensor response to  $\text{ClO}_4^-$  revealed linear increases ( $r^2 > 99\%$ ) in 10 min with k values of 10.3, 24.2, 33.9 and 48.2 at 25, 50, 75 and 100  $\mu\text{g/L}$ , respectively. A strong linear correlation was established between biosensor response (nA) and ion-chromatography conductivity readings ( $\mu\text{S}$ ) in the 25 to 100  $\mu\text{g/L}$  linear domain of the biosensor. Biosensor response to  $\text{ClO}_4^-$  was maximal at applied potential range of  $-0.6$  to  $-1.0\text{V}$ .  $\text{ClO}_4^-$  reduction current increased with an increase in pH and was maximal in the range of 7.6 to 8.0. The  $\text{ClO}_4^-$  biosensor was significantly stable after repeated use (24 analyses conducted on day 1 over a 10-h period at room temperature). This study indicates great potential for the development of a portable biosensor for real time analysis of  $\text{ClO}_4^-$  in water in the field.

## Introduction and Problem Statement

Perchlorate ( $\text{ClO}_4^-$ ), a strong oxidizing agent, is a major component of rocket and missile propellants as well as explosives and various pyrotechnics. Past industrial usage and disposal procedures have resulted in the release of  $\text{ClO}_4^-$  into the environment and led to significant contamination of groundwater (Urbanski and Schock, 1999). Wastewater generated from the manufacturing, maintenance, and testing of solid rocket propellants can contain  $\text{NH}_4\text{ClO}_4$  concentrations in the grams per liter range (Herman and Frankenberger, 1998).  $\text{ClO}_4^-$  has been detected at high concentrations in surface and ground waters in the U.S and has been estimated to potentially affect the potable water supplies of millions of people in the United States.

$\text{ClO}_4^-$  is potentially toxic to various forms of life (Lamm et al., 1999). Recent studies revealed that low concentrations of  $\text{ClO}_4^-$  in drinking water can inhibit iodide uptake in humans and wildlife (Lawrence et al. 2000), and  $\text{ClO}_4^-$  contamination of vegetation can have adverse effects on the growth of amphibians (Goleman et al., 2002).  $\text{ClO}_4^-$  has also been detected in vegetables subjected to irrigation with  $\text{ClO}_4^-$ -impacted water. Known human health risks associated with  $\text{ClO}_4^-$  are related to adverse effects on the thyroid gland (Capen, 1994; von Burg, 1995), which has spurred the regulation of  $\text{ClO}_4^-$  in drinking water. A public health goal (PHG) of 6  $\mu\text{g L}^{-1}$  was recently established by the California Department of Health Services (DHS 2004). This PHG is currently being used in development of an enforceable maximum contaminant level, expected later this year. In addition, the U.S. Environmental Protection Agency (EPA) is currently developing a federal drinking water standard, and various site-specific cleanup levels have been imposed ranging down to 1.5  $\mu\text{g L}^{-1}$  (Logan, 2001).

The increasing need to measure  $\text{ClO}_4^-$  in water has prompted the development of analytical methods such as ion chromatography (IC), capillary electrophoresis (CE) and  $\text{ClO}_4^-$  ion selective electrodes. These methods are time consuming, expensive, sometimes cumbersome, and subject to

error due to complex procedures and various interferences. Thus, there is an urgent need to develop a rapid method that can accurately detect and quantify low concentrations of  $\text{ClO}_4^-$  in the field in real time. Biosensors are analytical devices that utilize biomolecules or intact cells in conjunction with a transducer such as an electrode or an optical device. Biosensors are now attracting considerable attention as potential successors to a wide range of analytical techniques due to their unique properties of specificity. Biosensors are based on a system whereby, a biocatalyst converts a substrate to a product and the reaction is detected by a transducer, which converts it to an electrical signal. The output from the transducer is amplified, processed and displayed. Biosensors have been developed for the detection and determination of numerous compounds including: glucose (Delvaux and Demoustier-Champagne, 2003; Pandey et al., 2003), creatine (Stefan et al., 2003), urea (Glab et al., 1994, Walcerz et al., 1996, Kuswandi and Narayanaswamy, 1998), nitrate (Aylott et al., 1997), alcohols (de Prada et al., 2003), chitosan (Wang et al., 2003), asparagine (Li et al., 2002), phenols (Kulys and Vidziunaite, 2003), chromate (Michel et al., 2003) and other compounds.

Biosensors offer many advantages in comparison to the conventional analytical approaches due to their simplicity, real-time output, lower detection limits and sensitivity (CBC, 2004). The simplicity of biosensors often allows for their use by untrained personnel eliminating many human sources of error. Biosensors normally allow information to be recorded electronically, which enables signal processing and potentially remote monitoring with the transmission of data to a central facility via telemetry.

The mechanism of microbial breakdown of  $\text{ClO}_4^-$  is believed to proceed through the following pathway:  $\text{ClO}_4^- \rightarrow \text{ClO}_3^- \rightarrow \text{ClO}_2^- \rightarrow \text{Cl}^- + \text{O}_2$  (Logan et al. 2000). The first two reactions are catalyzed by (per)chlorate reductase. Chlorite dismutase catalyzes the disproportionation of chlorite into chloride and oxygen. Thus,  $\text{ClO}_4^-$  reductase is a key enzyme in the pathway of  $\text{ClO}_4^-$  breakdown.

## **Objectives**

The overall objective was construction of a highly sensitive amperometric biosensor for  $\text{ClO}_4^-$  using the  $\text{ClO}_4^-$  reductase of a novel perchlorate-respiring bacterium, *Dechlorosoma* sp. *perclace*, and application of the sensor to monitor  $\text{ClO}_4^-$  in water.

## **Procedures**

### ***Cultivation of Dechlorosoma sp. perclace***

*Dechlorosoma* sp. *perclace* (ATCC 202172) isolated by Herman and Frankenberger (1999) was used in this study. The bacterial culture was pre-grown in 100 ml FTW mineral elements medium using 125 ml Erlenmeyer flasks. The FTW mineral salts medium was comprised of the following (in g/L):  $\text{K}_2\text{HPO}_4$ , 0.225;  $\text{KH}_2\text{PO}_4$ , 0.225;  $(\text{NH}_4)_2\text{SO}_4$ , 0.225;  $\text{MgSO}_4 \cdot 7\text{H}_2\text{O}$ , 0.05;  $\text{CaCO}_3$ , 0.005;  $\text{FeCl}_2 \cdot 4\text{H}_2\text{O}$ , 0.005,  $\text{NaC}_2\text{H}_3\text{O}_4$ , 1.39 and 1 ml of trace elements solution (Focht, 1994). The medium was supplemented with 0.100 g/L  $\text{ClO}_4^-$  and incubated at room temperature (about 22°C) for five days. The 200 ml culture was used to inoculate sterile 1800 ml FTW mineral medium in a 2L Erlenmeyer flask (Herman and Frankenberger, 1999) and further incubated at room temperature for one week. Cells were washed by centrifugation (4,500 x g, 15 min, 4°C) and washed using nitrogen saturated buffer (25 mM phosphate buffer pH 7.6, 2 mM dithiothreitol).

### ***Enzyme extraction***

*Dechlorosoma* sp. *perclace* cells were re-suspended in 25 mM phosphate buffer pH 7.6, 2 mM DTT, and lysed in a pre-chilled French pressure cell at 20,000 psi. Cellular debris was separated by centrifugation (4,800 x g, 15 min, 4°C) and a reddish supernatant fraction was passed through a 0.22  $\mu\text{m}$  filter. The filtrate served as the cell-free enzyme (CFE).  $\text{ClO}_4^-$  reductase for biosensor

construction was then prepared as follows. The cell-free enzyme extract was concentrated by passing it through a Centricon Plus-20 (polyethersulfone 300, 000 MWCO) centrifugal filter device concentrator (Millipore Corporation, Bedford, MA, USA) to approximately 0.5 ml. The concentrate was applied to a Sephadex ion-exchange column (1.5 x 12.5 cm), previously equilibrated with HEPES (N-Cyclohexyl-2-aminoethanesulfonic acid) buffer at pH 8.5, to which 2 mM DTT was added. Proteins were eluted with 25 ml HEPES buffer at pH 8.5 followed with a linear gradient of 0-1 M NaCl in HEPES buffer at pH 8.5, at a flow rate of 1.25ml/min. One-milliliter fractions were collected at 4°C and assessed for  $\text{ClO}_4^-$  reductase activity (Okeke and Frankenberger, 2003). Active fractions (6 to 11) were pooled and dialyzed by passing it through Centricon Plus-20. The purity of the enzyme fractions were examined by sodium dodecyl sulfate (SDS)-polyacrylamide gel electrophoresis (PAGE) using 8 % polyacrylamide. Broad range molecular mass markers (BIO-RAD, Hercules, CA) ranging from 210,199 to 6,461 Da were used. Gels were stained with Coomassie brilliant blue G-250.  $\text{ClO}_4^-$  reductase was assayed in a capped cuvette by monitoring the oxidation of reduced methyl viologen at 578 nm (Kengen et al., 1999) as described by Okeke and Frankenberger (2003). Protein concentration was quantified using Coomassie<sup>R</sup> protein assay reagent (Pierce, Rockford, IL).

### ***Fabrication of electrodes***

A 3-mm glassy carbon electrode, GCE (Bioanalytical system Inc., IN, cat. No. MF-2012) was used to construct the  $\text{ClO}_4^-$  sensing bioelectrode. The electrode surface was first polished by sequentially rubbing over a BUEHLER<sup>R</sup> LTD (Lake Bluff, IL) GAMMA micropolish II (0.05 micron de-agglomerated alumina) on nanocloth PSA polish paper from BUEHLER<sup>R</sup> LTD. The polished GCE was then sonicated for 5 min in a sonic water bath (AQUASONIC model 75D, VWR Scientific Products). Thereafter, the sensing element was sequentially cast on the surface of the glass electrode. Firstly, 4  $\mu\text{l}$  of nafion (5% nafion, Aldrich, Milwaukee, WI) stock solution (20% v/v in absolute ethanol) was used to coat the surface of the electrode and allowed to air-dry at room temperature for 10 min. Secondly, a 2  $\mu\text{l}$  aliquot of the  $\text{ClO}_4^-$  reductase preparation (6.7 methyl viologen units/mg protein/ml) was deposited on the nafion layer and air dried for 15 min. Finally, the enzyme adsorbed to the nafion coating was firmly held by using a Spectra/Por<sup>R</sup> dialysis membrane (6-8,000 MWCO).

### ***Amperometric measurements of $\text{ClO}_4^-$ using the biosensor***

Amperometric measurements were conducted in 10 ml of 25 mM potassium phosphate buffer pH 7.6. The buffer was initially de-aerated by sonication in a sonic bath for 30 min. Aliquots (10 ml) were transferred to a clean 20 ml electrochemical cell and purged with oxygen-free nitrogen for 5 min. An Ag/AgCl electrode (BAS MF- 2052) was used as the reference and a platinum wire was the counter electrode. Before insertion into the analytical buffer solution, the GCE  $\text{ClO}_4^-$  biosensor was soaked in a solution of 1mM methyl viologen in 25 mM phosphate buffer for 5 min to saturate the sensing layer. Anoxic condition was maintained by spiking the buffer (pH 7.6) with 10  $\mu\text{l}$  of a 0.25 g/ml cysteine hydrochloride mono hydrate (Atlas, 1993) to give a final concentration of 0.25 mg/ml. Reactions were initiated by spiking the reaction buffer with 10  $\mu\text{l}$  from  $\text{ClO}_4^-$  stock solutions (1, 5, 25, 50, 75, 100, 125, 150, 175, 200 mg/L) to give the respective final concentrations in  $\mu\text{g/L}$ . Electrochemical measurements were then conducted using a CH Model 650A Electrochemical Workstation (CH Instruments, Inc., Austin, TX). The program was an amperometric i-t curve using the following parameters: sample interval: 0.1 sec, run time: 600 sec, sensitivity (A/V):  $1 \text{ E}^{-6}$  and applied potential (E) was -0.8V except for the study on effect of applied potential tested in the range -0.4 to -1.2 V." Experiments were conducted at ambient temperature (approximately 24°C). Biosensor response (change in current;  $\Delta i$ ) was calculated as the difference in current from 2 min to

10 min. In the linear range, the reaction was zero order and  $k = di/dt$  was calculated from the curve ( $i = kt + c$ ).

### ***Effect of applied potential***

Applied potential was applied from -400 to -1200 mV. Amperometric measurements were conducted as described above. The 10 ml analytical phosphate buffer (pH 7.6) solution was spiked with  $\text{ClO}_4^-$  to a final concentration of 100  $\mu\text{g/L}$ .

### ***Effect of pH***

The effect of pH on the performance of the biosensor was tested using 25 mM phosphate buffer at pH 6.0, 6.4, 6.8, 7.0, 7.2, 7.6 and 8.0. Amperometric measurements were conducted as described above. The 10 ml buffer solutions were spiked with  $\text{ClO}_4^-$  to a final concentration of 100  $\mu\text{g/L}$ .

### ***Effect of nitrate on $\text{ClO}_4^-$ detection***

The effect of nitrate on  $\text{ClO}_4^-$  detection in water was evaluated using 100  $\mu\text{g/L}$  in 25 mM phosphate buffer pH 7.6. The analytical buffer was then spiked with varying nitrate levels to give final concentrations of 100  $\mu\text{g/L}$  to 100 mg/L. Amperometric measurements were conducted as described above.

### ***Ion chromatography analysis of $\text{ClO}_4^-$***

Samples were filtered using a 0.2  $\mu\text{m}$  membrane filter (PALL Corporation, Ann Arbor).  $\text{ClO}_4^-$  was analyzed using a Dionex ion-chromatography 600 system (Dionex, Sunnyvale, CA), equipped with a GP40 gradient pump, an AS40 automated sampler, 1000  $\mu\text{l}$  injection loop, an AS16 analytical column and an ED40 conductivity detector. The eluent was 50 mM NaOH at 0.4 ml  $\text{min}^{-1}$ . An ASRS-II suppressor, operated by external regeneration with 50 mM  $\text{H}_2\text{SO}_4$  was used to suppress the eluent.

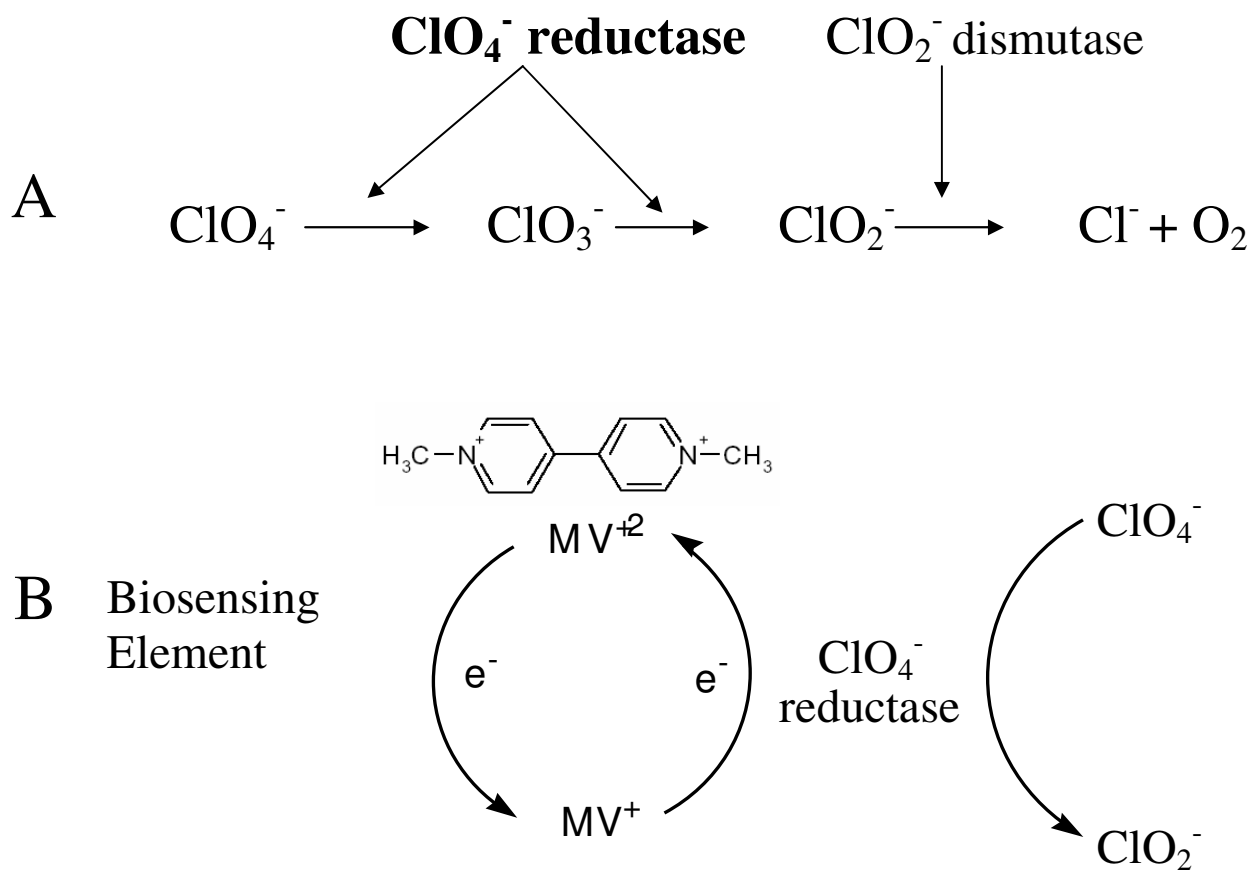
### ***Statistical analysis of data***

The means and standard errors of replicates were calculated. Linear regression analysis was performed on relevant data sets. The significance ( $p < 0.05$ ) or non-significance ( $p > 0.05$ ) of variable effect was analyzed by Mann-Whitney non-parametric test using the InStat 3 statistical software (GraphPad Software, Inc., San Diego, CA, USA).

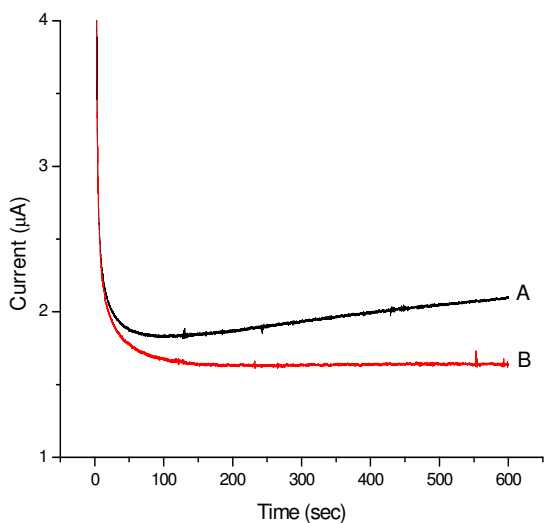
## **Results**

### ***$\text{ClO}_4^-$ biosensor***

We successfully constructed a  $\text{ClO}_4^-$  sensing bioelectrode by coating aliquots of a perchlorate reductase enzyme on a nafion layer (ion-exchange matrix) on the surface of a 3 mm GCE. The  $\text{ClO}_4^-$  biosensor is based on the mixed function redox property of the system in which the immobilized sensing element ( $\text{ClO}_4^-$  reductase) oxidizes the mediator (an electrochemically reduced methyl viologen) and the reduced enzyme consequently reduces  $\text{ClO}_4^-$  (Fig. 1). Thus, at an applied potential, increases in reduction current can be used to measure  $\text{ClO}_4^-$ . With the initiation of the reaction by adding aliquots of predetermined concentrations of  $\text{ClO}_4^-$ , the background current was initially high, but rapidly decayed to stable readings. The current subsequently increased due to  $\text{ClO}_4^-$  reduction. The average response time (defined as the onset of steady increases in reduction current) to  $\text{ClO}_4^-$  at 100  $\mu\text{g/L}$  was  $111 \pm 28$  seconds. The biosensor chronoamperogram for  $\text{ClO}_4^-$  with and without  $\text{ClO}_4^-$  reductase in the linear response range is presented in Fig. 2.



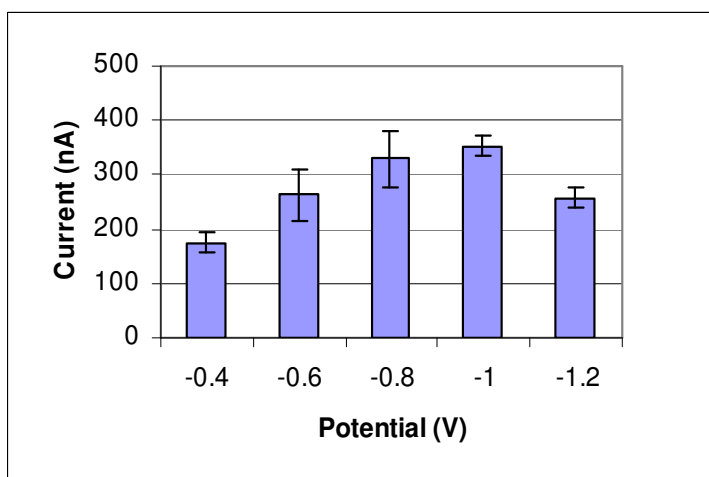
**Fig. 1. Operation of the  $\text{ClO}_4^-$  biosensor. A: enzymatic pathway for  $\text{ClO}_4^-$  reduction. B: mechanism of  $\text{ClO}_4^-$  reduction at the sensing layer (GCE-Nafion- $\text{ClO}_4^-$  reductase-MV complex).**



**Fig. 2. Chronoamperogram for  $\text{ClO}_4^-$  with  $\text{ClO}_4^-$  reductase (A) and without  $\text{ClO}_4^-$  reductase (B).**

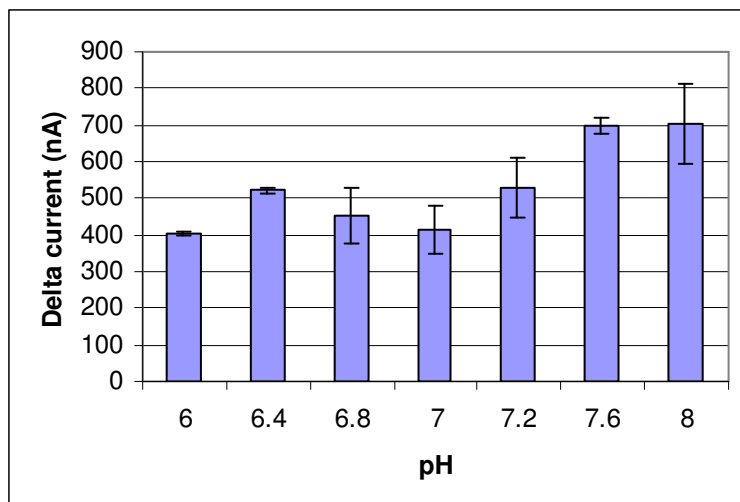
***Effect of applied potential and matrix pH on sensor response to  $\text{ClO}_4^-$***

The effects of applied potential and matrix pH on sensor response to  $\text{ClO}_4^-$  were tested. The effect of applied potential on sensor response to  $\text{ClO}_4^-$  was examined at  $-0.4$ ,  $-0.6$ ,  $-0.8$ ,  $-1.0$  and  $-1.2$  V (Fig. 3). Biosensor response to  $\text{ClO}_4^-$  was maximal in the range  $-0.6$  to  $-1.0$  V. Slightly lower reduction current was observed at  $-1.2$  V and the lowest reduction current was recorded at a potential of  $-0.4$ . Biosensor response at  $-0.8$  V and  $-1.0$  V was significantly ( $p < 0.05$ ) higher than the response recorded at  $-0.4$  V. The influence of sample pH was tested at pH 6.0, 6.4, 6.8, 7.0, 7.2, 7.6 and 8.0 (Fig. 4).  $\text{ClO}_4^-$  reduction current increased with increasing pH and was maximal in the range 7.6 to 8.0. Neutral pH displayed the lowest change in current. The sensor response at pH 6.8 to 7.0 was significantly ( $p < 0.05$ ) less than the response recorded at pH 7.6 to 8.



**Fig. 3. Effect of applied potential (E) on biosensor response to  $\text{ClO}_4^-$ . Results are means of two independent experiments.**

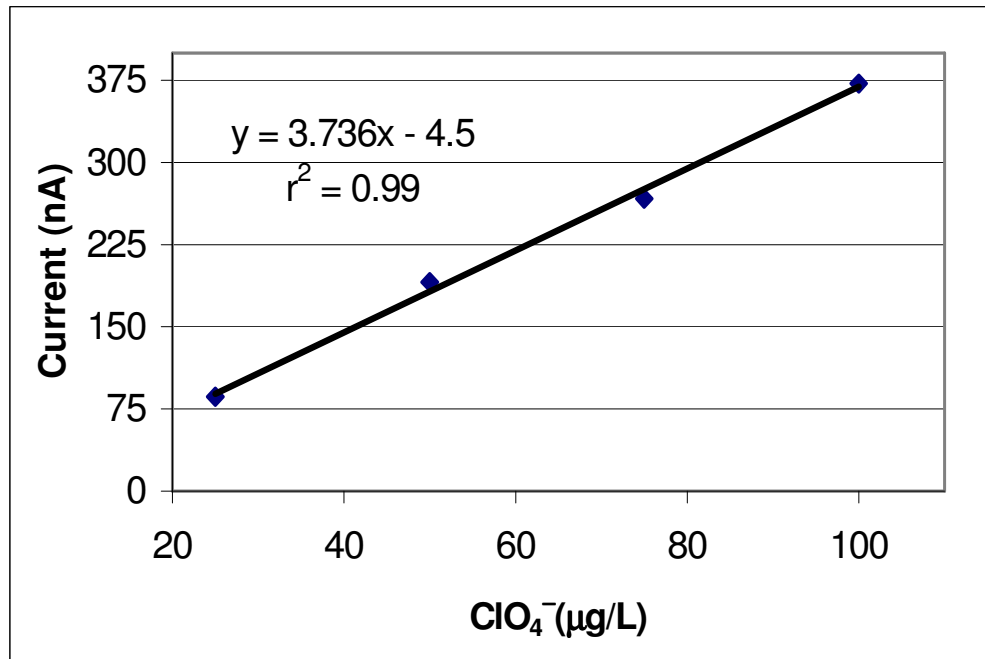




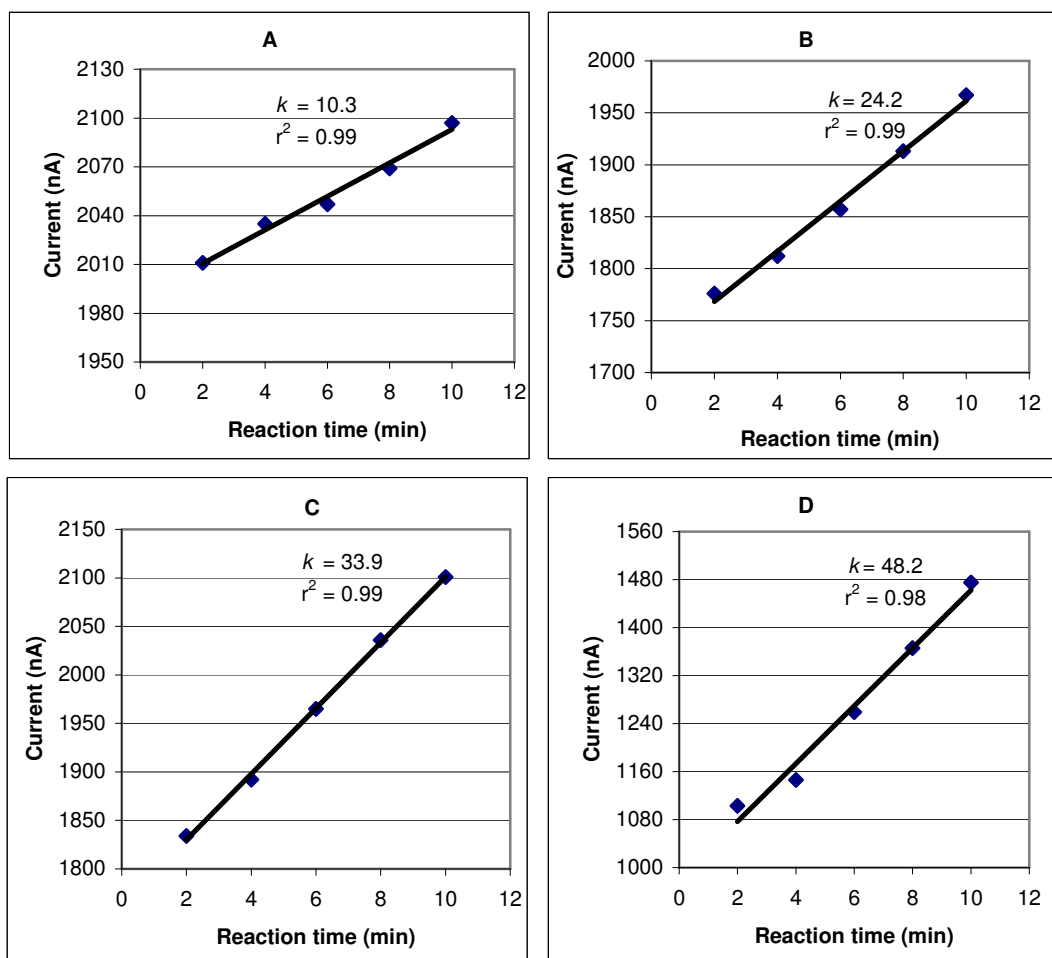
**Fig. 4. Effect of matrix pH on biosensor response to  $\text{ClO}_4^-$ . Results are means of two independent experiments.**

#### ***Calibration of the $\text{ClO}_4^-$ biosensor***

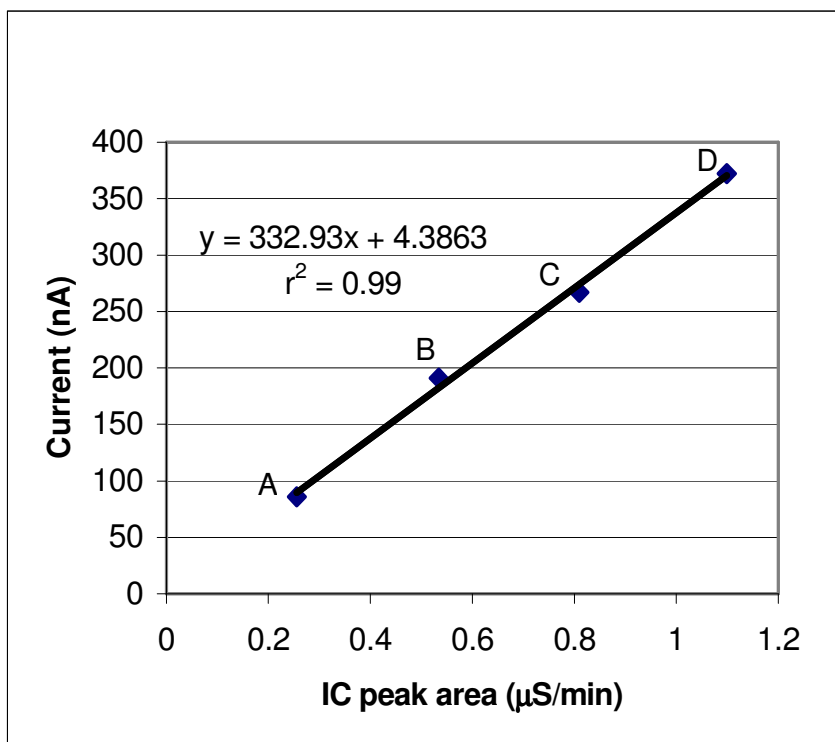
The  $\text{ClO}_4^-$  biosensor construct was tested at different concentrations (1 to 200  $\mu\text{g/L}$ ). The  $\text{ClO}_4^-$  biosensor responded to  $\text{ClO}_4^-$  at as low as 1  $\mu\text{g/L}$   $\text{ClO}_4^-$ . A linear response was obtained in the range 25 to 100  $\mu\text{g/L}$   $\text{ClO}_4^-$  (Fig. 5). Kinetic evaluation of the sensor response to  $\text{ClO}_4^-$  at 25 to 100  $\mu\text{g/L}$   $\text{ClO}_4^-$  revealed a zero order reaction ( $r^2 > 99\%$ ) with k values of 10.3, 24.2, 33.9 and 48.2 at 25, 50, 75 and 100  $\mu\text{g/L}$   $\text{ClO}_4^-$ , respectively (Fig. 6). Correlation between the biosensor response (change in current) and ion-chromatography conductivity readings in the linear domain of the biosensor (25 to 100  $\mu\text{g/L}$ ) is presented in Fig. 7. A very strong correlation between the responses of the two instruments with a coefficient of determination ( $r^2$ ) of 0.997 was observed. The closeness of this curve fit is an indication that the  $\text{ClO}_4^-$  biosensor produced a reliable set of data. The sensitivity of the biosensor was dependent upon the concentration of  $\text{ClO}_4^-$  reductase immobilized on the sensing layer. Reduction of enzyme concentration decreased the sensitivity.



**Fig. 5. Standard curve for  $\text{ClO}_4^-$ . Concentrations tested were in increments of 25  $\mu\text{g/L}$  (1, 25, 50, 75, 100, 125, 150, 175, 200  $\mu\text{g/L}$ ). Linear range for this sensor was 25 to 100ppb and was used for the calibration.**



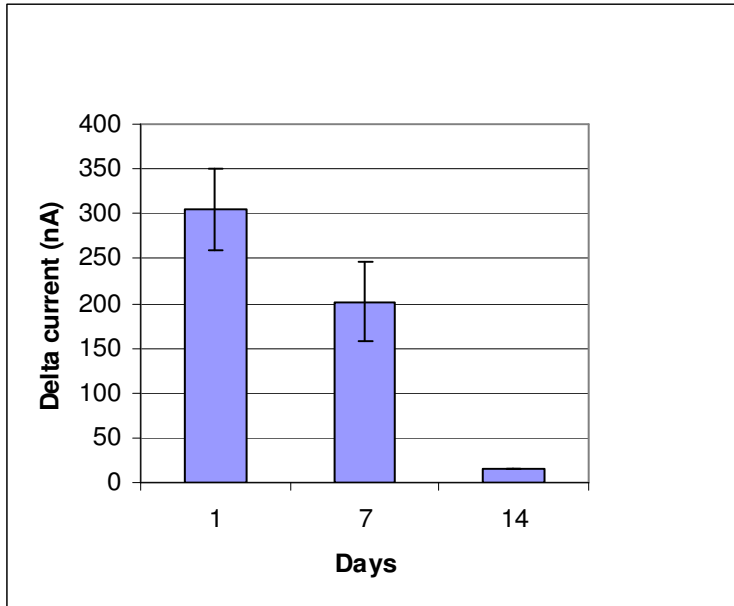
**Fig. 6.** Kinetics of biosensor response to  $\text{ClO}_4^-$  at concentrations of  $25 \mu\text{g/L}$  (A),  $50 \mu\text{g/L}$  (B),  $75 \mu\text{g/L}$  (C) and  $100 \mu\text{g/L}$  (D) in 10 min.  $k = di/dt$  and was calculated from the curve ( $i = kt + c$ ).



**Fig. 7. Correlation between biosensor response (nA) and ion chromatography (IC) response (μS) at  $25 \mu\text{g L}^{-1}$  (A),  $50 \mu\text{g L}^{-1}$  (B),  $75 \mu\text{g L}^{-1}$  (C) and  $100 \mu\text{g L}^{-1}$  (D).**

### ***ClO<sub>4</sub><sup>-</sup> biosensor stability***

The ClO<sub>4</sub><sup>-</sup> biosensor displayed excellent stability after repeated use (24 times on day 1 over an 8-h period at room temperature). Upon further storage at 4°C for 7 days and subsequent analysis of 18 water samples for ClO<sub>4</sub><sup>-</sup>, 30% loss of activity (ClO<sub>4</sub><sup>-</sup> reduction current) was observed (Fig. 8). The sensor lost approximately 95% of its activity after further storage at 4°C for 7 days.



**Fig. 8. Stability of the ClO<sub>4</sub><sup>-</sup> biosensor over 14 days of its construction. Sensor was stored at 4 °C after each day of analysis.**

### ***Effect of NO<sub>3</sub><sup>-</sup> on ClO<sub>4</sub><sup>-</sup> sensor response***

We examined the effects of different concentrations of nitrate on the biosensor response to ClO<sub>4</sub><sup>-</sup> (Table 1). Addition of nitrate to the 100 µg/L ClO<sub>4</sub><sup>-</sup> solution did not cause any substantial interference to the biosensor response readings and kinetic constant. At 0.1 and 50 mg/L NO<sub>3</sub><sup>-</sup>, the biosensor response and *k* values were 681±163 and 710±96, respectively and the *k* values were 170±38 and 182±22, respectively. Addition of high concentration of NO<sub>3</sub><sup>-</sup> (100 mg/L), however, substantially (*p* < 0.05) interfered with the sensor response to NO<sub>3</sub><sup>-</sup>.

**Table 1. NO<sub>3</sub><sup>-</sup> interference with ClO<sub>4</sub><sup>-</sup> measurements in buffer at 100 µg/L ClO<sub>4</sub><sup>-</sup>.**

NO <sub>3</sub> <sup>-</sup> (mg/L)	Response (Δ <i>i</i> , nA )	<i>k</i>	<i>r</i> <sup>2</sup>
0	681±116	170±27	0.97±0.01
0.1	671±59	168±15	0.98±0.01
1	652±21	163± 4	0.97±0.02
25	699±95	172±15	0.96±0.02
50	710±69	182±16	0.99±0.01
100	389±31	139±36	0.99±0.01

Kinetic constant (*k*) = *di/dt* and was calculated from the curve (*i* = *kt* + *c*).

## Discussion

Enzymatic electrodes integrated with nitrate reductase as the recognizing element and redox colorants, particularly methyl viologen (dication 1,1'-dimethyl-4,4'-bipyridinium) (MV) as artificial regenerators have been reported as successful biosensors (Moretto et al., 1998; Ferreya et al., 2000). The reduced form of the methyl viologen (MV<sup>2+</sup>) is used as a redox regenerator mainly due to its redox potential, which is one of the most negative found in electrochemically reversible organic systems (Moretto et al., 1998). Enzymes and organic molecules that are not themselves electroactive can be reduced by mediators. In our study, sequential coating of the GCE with a nafion layer followed with a ClO<sub>4</sub><sup>-</sup> reductase layer and saturation with electrochemically reduced MV as the enzyme regenerator produced an efficient, sensitive and stable biosensor for ClO<sub>4</sub><sup>-</sup>. With the initiation of the reaction, the background current decayed rapidly reaching a steady state baseline in < 2 min. A nitrate reductase based nitrate biosensor reached a steady state baseline current within 3-4 min (Glazier, 1998). In our study, the magnitude of the background current varied between measurements with the ClO<sub>4</sub><sup>-</sup> biosensor. This was, however, normalized by calculating the change in current (2-10 min) and a linear response with respect to time and concentration was observed. The linear increase in ClO<sub>4</sub><sup>-</sup> reduction current over the reaction time as well as the linear relationship at different concentrations demonstrates that the enzyme was active and to specifically ClO<sub>4</sub><sup>-</sup>. Moreover, the bare electrode (without the enzyme immobilized) displayed no response to ClO<sub>4</sub><sup>-</sup> as no increases in current was observed. Attempts to immobilize the enzyme by mixing the nafion-ethanol solution before casting it on the GCE surface resulted in precipitation and the sensor made with this procedure retained a weak response to ClO<sub>4</sub><sup>-</sup>.

Based on response time, the ClO<sub>4</sub><sup>-</sup> biosensor was similar to the amperometric nitrate biosensor developed by Glazier et al. (1998), which displayed a response time of approximately 240-300 seconds (including the background current decay time). Higher response time (10-60 min) was reported for a urease-based biosensor (Krawczynski vel Krawczyk et al., 2000). Methods for the determination of low concentrations of ClO<sub>4</sub><sup>-</sup> such as ion chromatography (IC) and capillary electrophoresis (CE) are time consuming due to sample processing, run time and equipment breakdown. Interestingly, the response time of the ClO<sub>4</sub><sup>-</sup> biosensor was remarkably very short. Although a linear response was not achieved at 1 to 25 µg/L, current data strongly indicates that ultra-low concentrations of ClO<sub>4</sub><sup>-</sup> can be at least qualitatively measured using the ClO<sub>4</sub><sup>-</sup> reductase-based biosensor. Further efforts will be directed towards obtaining a linear response at ultra low concentrations of ClO<sub>4</sub><sup>-</sup>. This can be achieved by improving the electrochemical device, the signal/noise ratio and enzyme loading.

Catalytic properties of enzymes are pH dependent. As the pH of environmental sample matrices are likely to vary, we investigated the performance of the biosensor at different pH values. The optimal pH profile of the biosensor mirrors the pH profile of the purified enzyme (Okeke and Frankenberger, 2003) with maximal activity at pH 7.5 – 8.0. The high maximal pH would be an advantage in that chlorite dismutase characterized from a similar organism was optimally active at pH 6.0 and with minimal activity in the range 7.5 to 8.0 (van Ginkel et al., 1996). Thus it is possible to construct a microbial biosensor for  $\text{ClO}_4^-$  without the potential interference from chlorite dismutase. The biosensor responded to  $\text{ClO}_4^-$  at an applied potential as low as 0.4V. The low operating potential of this biosensor is useful in that interferences from electroactive contaminants common in ground water can be greatly reduced when operated at low potentials (Lei et al., 2004; Mulchandani et al., 2001).

Oxygen can create a serious interference through increases in background current. Glazier et al. (1998) reported that the reduction of oxygen at the electrode surface can cause large amounts of background currents. We successfully eliminated this potential interference from residual oxygen by spiking the analytical buffer solution with L-cysteine hydrochloride to a final concentration of 0.25 mg/ml. The capacity of L-cysteine•HCl to remove oxygen had been reported by Atlas (1993). Logan et al. (2004) similarly showed that 0.5 mg/L of L-cysteine.HCl can create and sustain anoxic conditions.

$\text{ClO}_4^-$  reductase has been reported to reduce nitrate (Kengen et al., 1999, Okeke and Frankenberger, 2003). Nitrate is a common ground water contaminant and the presence of high concentrations of nitrate in the sample matrix would be expected to substantially interfere with  $\text{ClO}_4^-$  detection using the  $\text{ClO}_4^-$  reductase-based biosensor. Thus we investigated the possible interference of nitrate with  $\text{ClO}_4^-$  measurements. Surprisingly, the addition of nitrate in the range 0.1 to 50 mg/L to a 100  $\mu\text{g/L}$   $\text{ClO}_4^-$  solution did not significantly affect the rate constant (Table 1). Thus, water samples that meet the nitrate regulatory limit (<45 mg/L nitrate) apparently may not pose serious interference problems to the  $\text{ClO}_4^-$  reductase-based biosensor. A higher concentration of nitrate (100 mg/L), however, caused significant interference. Nitrate interference could be alleviated by pretreatment with a nitrate specific nitrate reductase. A nitrate reductase based biosensor (Glazier et al., 1998) did not reduce  $\text{ClO}_4^-$ , a higher oxidation analogue. Halide analogues of nitrate such as chlorate and bromate are all substrates for nitrate reductase (Glazier et al., 1998) and thus, can be removed by pretreatment with nitrate reductase.

Studies on the stability of our  $\text{ClO}_4^-$  biosensor showed substantial decreases in the degree or magnitude of the biosensor response with use and aging of the enzyme electrode. This can be attributed to decay in enzyme activity over time (Glazier et al., 1998). It was, however, interesting that the  $\text{ClO}_4^-$  biosensor constructed in this study was substantially stable after several measurements at room temperature (24 °C) and upon storage at 4 °C for 1 week.

## Conclusion

In conclusion, enzyme-based biosensors are currently emerging as important environmental analytical tools. A microbial enzyme-based biosensor has been developed for amperometric detection of  $\text{ClO}_4^-$  in water. A  $\text{ClO}_4^-$  reductase-based biosensor will be suitable for rapid quantification of  $\text{ClO}_4^-$  in the environment with the possibility of on-line monitoring of  $\text{ClO}_4^-$  in automated bioreactor systems. The amperometric sensor reported is portable, inexpensive, easy to operate and responds in real time. High concentrations of  $\text{NO}_3^-$  showed some degree of interference in the measurement. Future studies will study  $\text{ClO}_4^-$  biosensing in natural ground water from different sites impacted with  $\text{ClO}_4^-$ , examine pre-treatment of water samples with  $\text{NO}_3^-$  reductases that are not active on  $\text{ClO}_4^-$  and improve on sensor design to allow for analysis of ultra low concentrations of  $\text{ClO}_4^-$  in the presence of nitrate.

## List of Publications

1. **Okeke Benedict C.**, Guangyu Ma, Quan Cheng, Mark E. Losi and William T. Frankenberger Jr Development of a Perchlorate Reductase Based Biosensor for Real Time Analysis of Perchlorate in Water. *J. Microbiol. Method.*
2. **Okeke B. C.**, Guangyu Ma, Quan Cheng, Mark E. Losi and William T. Frankenberger Jr. (2006). Perchlorate Detection in Water by a Microbial Enzyme-Based Biosensor. Abstracts of the 106<sup>th</sup> General Meeting of the American Society for Microbiology, Orlando, FL USA.

## References

- Aylott, J.W., D.J. Richardson, Russell, D.A., 1997. Optical sensing of nitrate ions using a sol-gel immobilized nitrate reductase. *Analyst* 122, 77-80.
- Brinker, C.J., Scherer, G.W., 1990. Sol-Gel Science. Academic Press, San Diego.
- Capen, C.C. 1994. Mechanisms of chemical injury of thyroid gland. *Progress in Clinical and Biological Research. Receptor mediated Biological Processes: Implications for evaluation Carcinogenesis.* Wiley-Liss, New York.
- CBC (Cranfield Biotechnology Center). 2004. Biosensors, [http://www.cranfield.ac.uk/biotech/sensors/what\\_are\\_biosensors.htm](http://www.cranfield.ac.uk/biotech/sensors/what_are_biosensors.htm)
- CDHS, 2004. Perchlorate drinking water action level and regulation. Department of Health Services, Sacramento, CA. <http://www.dhs.ca.gov/ps/ddwem/chemicals/perchl/actionlevel.htm>.
- De Prada, A.G.V., N. Pena, M.L. Mena, A.J. Reviejo, Pingarron J.M., 2003. Graphite-Teflon composite bienzyme amperometric biosensors for monitoring of alcohols. *Biosens. Bioelect.* 18, 1279-1288.
- Delvaux, M., Demoustier-Champagne, S., 2003. Immobilisation of glucose oxidase within metallic nanotubes arrays for application to enzyme biosensors. *Biosens. Bioelect.* 18, 943-951.
- Ferreya, N.F., S.A. Dassie, Solis, V.M., 2000. Electroreduction of methyl viologen in the presence of nitrite. Its influence on enzymatic electrodes. *J. Electroanal. Chem.* 486,126-132.
- Focht, D.D. 1994. Microbiological procedures for biodegradation research. In *Methods of Soil Analysis, Part 2 - Microbiological and Biochemical Properties* (Weaver, R.W. et al., Eds.) Soil Science Society of America, Book Series 5. SSSA, Madison, WS, pp. 407-426.
- Glab, S., R. Koncki, E. Kopczewska, I. Walcerz, Ans Hulanicki, A., 1994. Urea sensors based on pvc membrane pH electrode. *Talanta* 4, 1201-1205.
- Glazier, S.A., Campbell, E.R., Campbell W.H., 1998. Construction of and characterization of nitrate reductase-based amperometric electrode and nitrate assay of fertilizers and drinking water. *Anal. Chem.* 70, 1511-1515.
- Goleman, W.L., Urquidi, L.J., Anderson, T.A., Smith, E.E., Kendall, R.J., Carr J.A., 2002. Environmentally relevant concentrations of ammonium perchlorate inhibit development and metamorphosis in *Xenopus laevis*. *Environ. Toxicol. Chem.* 21, 424-430.
- Herman, D.C., Frankenberger Jr., W.T., 1998. Microbial-mediated reduction of perchlorate in groundwater. *J. Environ. Qual.* 27, 750-754.
- Herman, D.C., Frankenberger Jr., W.T., 1999. Bacterial reduction of perchlorate and nitrate in water. *J. Environ. Qual.* 28, 1018-1024.
- Kengen, S.W.M., Rikken, G.B., Hagen, W.R., van Ginkel, C.G., van Ginkel, A.J.M., 1999. Purification and characterization of perchlorate reductase from the chlorate- respiring strain GR-1. *J. Bact.* 181, 6706-6711.
- Krawczynski Vel Krawczyk, T., Trojanowicz, M., Lewenstam, A., 1994. Enzymatic flow-injection determination of urea in blood serum using potentiometric gas sensor with internal nonactin based ISE. *Talanta* 41, 1229-1236.



- Kulys, J., Vidziunaite, R., 2003. Amperometric biosensors based on recombinant laccases for phenols determination. *Biosens. Bioelect.* 18, 319-325.
- Kuswandi, B., Narayanaswamy, R., 1998. A simple optical flow injection ammonia sensor. *Anal. Lett.* 3, 395-410.
- Lamm, S.H., Braverman, L.E., Li, F.X., Pino, S., Howarth, G., 1999. Thyroid health status of ammonium perchlorate workers: a cross sectional occupational health study. *J. Occup. Env. Med.* 41, 248-260.
- Lawrence, J.E., Lamm, S.H., Pino, S., Richman, K., Braverman, L.E., 2000. The effect of short-term low-dose perchlorate on various aspects of thyroid function. *Thyroid* 10, 659-663.
- Li, J., Wang, J., Bachas, L.G., 2002. Biosensor for Asparagine Using a Thermostable Recombinant Asparaginase from *Archaeoglobus fulgidus*. *Anal. Chem.* 74, 3336-3341.
- Logan, B.E., 1998. A review of chlorate- and perchlorate-respiring microorganisms. *Bioresour. J.* 2, 69-79.
- Logan, B.E., Zhang, H., Wu, J., Unz, R., Koenigsberg, S.S., 2000. The potential for in situ perchlorate degradation. p. 87-92. In G.B. Wickramanayake et al. (ed.). *Case Studies in the Remediation of Chlorinated and Recalcitrant Compounds*, Battelle Press, Columbus, OH.
- Michel, C., Battaglia-Brunet, F., Minh, C.T., Bruschi, M., Ignatiadis, I., 2003. Amperometric cytochrome C3-based biosensor for chromate determination. *Biosens. Bioelect.* 19, 345-352.
- Moretto, L.M., Ugo, P., Zanata, M., Guerriero, P., Martin, C.R., 1998. Nitrate biosensor based on the ultrathin-film composite membrane concept. *Anal. Chem.* 70, 2163-2166.
- Mulchandani, P., Chen, W., Mulchandani, A., Wang, J., Chen, L., 2001. Amperometric microbial biosensor for direct determination of organophosphate pesticides using recombinant microorganism with surface expressed organophosphorus hydrolase. *Biosens. Bioelect.* 16, 433-437.
- Okeke, B.C., Frankenberger, W.T. 2003. Molecular analysis of a perchlorate reductase from a novel perchlorate respiring bacterium, *perclace*. *Microbiol. Res.* 158, 337-344.
- Pandey, P.C., Upadhyay, S., Shukla, N.K., Sharma, S., 2003. Studies on the electrochemical performance of glucose biosensor based on ferrocene encapsulated ORMOSIL and glucose oxidase modified graphite paste electrode. *Biosens. Bioelect.* 18, 1257-1268.
- Parks, L.C., 1993. *Handbook of Microbiological Media*. BocaRaton, CRC Press, Inc, FL.
- Stefan, R.I., Bokretson, R.G., van Staden, J.F. 2003. Simultaneous determination of creatine and creatinine using amperometric biosensors. *Talanta* 60, 1223-1228.
- Song, Y., Logan, B.E. 2004. Inhibition of aerobic respiration and dissimilatory perchlorate reduction using cyanide. *FEMS Microbiol. Lett.* 239, 229-234.
- Urbansky, E.T., Schock, M.R., 1999. Issues in managing the risks associated with perchlorate in drinking water. *J. Environ. Manag.* 56, 79-95.
- Van Ginkel, C.G., Rikken, G.B., Kengen, S.W.M., 1996. Purification and characterization of chlorite dismutase: a novel oxygen-generating enzyme. *Arch Microbiol.* 166, 321-326.
- Von Burg, R., 1995. Toxicology Update-Perchlorates. *J. Appl. Toxicol.* 15, 237-241.
- Walcerz, I., Koncki, R., Leszczynska, E., Salamonowicz, B., Glab, S., 1996. Urea biosensors based on pvc membrane ion-selective electrodes. *Anal. Lett.* 29, 1939-1953.
- Wang, Y.T., Zhu, J.Z., Zhu, R.J., Zhu, Z.Q., Lai, Z.S., and Chen, Z.Y., 2003. Chitosan/Prussian blue-based biosensors. *Meas. Sci. Technol.* 14, 831-836.
- Xu, J., Song, Y., Min, Y., Steinberg, B. L., Logan B.E., 2003. Microbial Degradation of perchlorate: principles and applications. *Environ. Eng. Sci.* 20, 405-422.
- Yu, L., Mulchandani, P., Chen, W., Wang, J., Mulchandani, A., 2004. *Arthrobacter* sp. JS443-Based Whole Cell Amperometric Biosensor for *p*-Nitrophenol. *Electroanalysis* 6, 2030-2032.