

UC Davis

UC Davis Previously Published Works

Title

Genome-wide screening of mouse knockouts reveals novel genes required for normal integumentary and oculocutaneous structure and function

Permalink

<https://escholarship.org/uc/item/8nb949hf>

Journal

Scientific Reports, 9(1)

ISSN

2045-2322

Authors

Moore, Bret A
Flenniken, Ann M
Clary, Dave
et al.

Publication Date

2019

DOI

10.1038/s41598-019-47286-2

Peer reviewed

OPEN

Genome-wide screening of mouse knockouts reveals novel genes required for normal integumentary and oculocutaneous structure and function

Bret A. Moore¹, Ann M. Flenniken^{2,3}, Dave Clary⁴, Ata S. Moshiri⁵, Lauryl M. J. Nutter^{2,6}, Zorana Berberovic^{2,3}, Celeste Owen^{2,3}, Susan Newbigging^{2,6}, Hibret Adissu^{2,6}, Mohammad Eskandarian^{2,3}, Colin McKerlie², International Mouse Phenotyping Consortium*, Sara M. Thomas^{7,8}, K. C. Kent Lloyd⁴, Christopher J. Murphy^{7,8} & Ala Moshiri⁸

Oculocutaneous syndromes are often due to mutations in single genes. In some cases, mouse models for these diseases exist in spontaneously occurring mutations, or in mice resulting from forward mutagenesis screens. Here we present novel genes that may be causative for oculocutaneous disease in humans, discovered as part of a genome-wide screen of knockout-mice in a targeted single-gene deletion project. The International Mouse Phenotyping Consortium (IMPC) database (data release 10.0) was interrogated for all mouse strains with integument abnormalities, which were then cross-referenced individually to identify knockouts with concomitant ocular abnormalities attributed to the same targeted gene deletion. The search yielded 307 knockout strains from unique genes with integument abnormalities, 226 of which have not been previously associated with oculocutaneous conditions. Of the 307 knockout strains with integument abnormalities, 52 were determined to have ocular changes attributed to the targeted deletion, 35 of which represent novel oculocutaneous genes. Some examples of various integument abnormalities are shown, as well as two examples of knockout strains with oculocutaneous phenotypes. Each of the novel genes provided here are potentially relevant to the pathophysiology of human integumentary, or oculocutaneous conditions, such as albinism, phakomatoses, or other multi-system syndromes. The novel genes reported here may implicate molecular pathways relevant to these human diseases and may contribute to the discovery of novel therapeutic targets.

Phakomatoses traditionally comprise the group of genetic disorders with structural abnormalities found in tissues that arise from embryonic ectoderm, namely the central nervous system, eyes and skin, and are thus dubbed neuro-oculo-cutaneous syndromes¹. Most of these entities are single gene disorders. Examples of human phakomatoses with heritable mutations include, tuberous sclerosis (autosomal dominant mutations in *TSC1* or *TSC2*), neurofibromatosis (autosomal dominant mutations in *NF1* or *NF2*), von Hippel-Lindau disease

¹William R. Pritchard Veterinary Medical Teaching Hospital, School of Veterinary Medicine, University of California Davis, Davis, CA, United States. ²The Centre for Phenogenomics, Toronto, ON, M5T 3H7, Canada. ³Lunenfeld-Tanenbaum Research Institute, Mount Sinai Hospital, Toronto, ON, M5G 1X5, Canada. ⁴Department of Surgery, School of Medicine, and Mouse Biology Program, University of California Davis, Davis, CA, United States. ⁵Division of Dermatology, Department of Medicine, University of Washington, Seattle, WA, United States. ⁶The Hospital for Sick Children, Toronto, ON, M5G 1X8, Canada. ⁷Department of Surgical and Radiological Sciences, School of Veterinary Medicine, University of California Davis, Davis, CA, United States. ⁸Department of Ophthalmology & Vision Science, School of Medicine, University of California Davis, Sacramento, CA, United States. *A comprehensive list of consortium members appears at the end of the paper. Correspondence and requests for materials should be addressed to A.M. (email: amoshiri@ucdavis.edu)

(autosomal dominant mutations in *VHL*), basal cell nevus syndrome (autosomal dominant mutations in *PTCH*), incontinentia pigmenti (*X*-linked dominant mutations in *NEMO*), and ataxia telangiectasia (autosomal recessive mutations in *ATM*). Some phakomatoses, such as Sturge-Weber syndrome (a nonhereditary congenital disorder resulting from a somatic activating mutation in *GNAQ*) and Wyburn-Mason syndrome (a nonhereditary congenital and sporadic condition) occur with no known pattern of inheritance or incidence. Yet other syndromes affecting these same organ systems but with abnormalities derived from mesenchymal or endodermal (rather than ectodermal) tissues are thought by some to be included in the phakomatoses. An example of such a disease is PHACES (posterior fossa malformations, hemangiomas, arterial anomalies, cardiac anomalies or aortic coarctation, eye abnormalities, sternal clefting or supraumbilical raphe), a congenital syndrome with similar incidence to Sturge-Weber that currently has no known cause.

Similar to phakomatoses, albinism refers to a set of genetic disorders caused by autosomal recessive mutations in genes relevant to pigmentation, often resulting in abnormalities either in the eyes alone (ocular albinism, OA), or the eyes and integument (oculocutaneous albinism, OCA)². To date, only one locus has been associated with OA (mutations in *GPR143*); by contrast, seven types of OCA have been described with mutations in six genes identified to date (*TYR*, *OCA2*, *TYRP1*, *SLC45A2*, *SLC24A5*, *C10orf11*). OCA has also been observed as part of several broader syndromes, including Hermansky-Pudlak (*HPS1*, *AP3B1*, *HPS3*, *HPS4*, *HPS5*, *HPS6*, *DTNBP1*, *BLOC1S3*, and *BLOC1S6* genes), Chediak-Higashi (*LYST*), and Griscelli (*MYO5A*, *RAB27A*, and *MLPH*) syndromes. Despite recent advances in sequencing, approximately 20 percent of patients with OA and/or OCA still have no identified mutation accounting for their phenotype.

Given the ample number of known single gene disorders that have overlapping integument and ocular involvement, as well as the number of oculocutaneous syndromes with possible genetic mutations that have not yet been identified, we sought to query the International Mouse Phenotyping Consortium (IMPC) database for novel single-gene targeted loss of function (knockout) mouse strains with integument and ocular abnormalities. The IMPC was established in 2011 as a coordinated program of highly specialized academic health sciences centers with expertise in high-throughput mouse mutagenesis and/or comprehensive phenotyping³. The goal of the IMPC is to create the first functional catalogue of the mammalian genome, as represented by the laboratory mouse^{4,5}. Now encompassing 19 centers in 15 countries on 5 continents, the IMPC has, as of April 3, 2018, produced fully validated knockout mouse strains for 6,000 genes and completed phenotyping across 11 body systems for over 5,000 of these genes. Phenotyping was conducted on cohorts of 7 male and 7 female mutant mice on a C57BL/6N genetic background beginning at 4 weeks of age with weekly body weights, sequential non-invasive or minimally invasive phenotyping tests, and a panel of terminal tests at 16 weeks of age. Testing and data collection at all centers was done using IMPC standardized phenotyping protocols (<http://www.mousephenotype.org/impress>), that enable uniform principles of scientific rigor and reproducibility⁶. Approximately 30% of strains were homozygous lethal⁷. All data and images captured and curated by the phenotyping centers are uploaded to the IMPC Data Coordination Center (DCC), quality-controlled, and analyzed using a robust statistical analysis pipeline⁸, then posted to the IMPC portal (www.impc.org). All of the raw and analyzed data are viewable online and accessible for download and manipulation.

We report here the genes that are likely causative for oculocutaneous disease in mice, each of which are potentially relevant to the pathophysiology of human OA, OCA, and/or phakomatoses. Any genetic underpinnings of these diseases are of interest not only for further understanding of their etiologies, but also for identification of potential targets for gene or drug therapy.

Results

Integumentary data base search. All wild-type mice produced on the C57BL/6N background had a uniform black coat colour. Searching the IMPC database for knockout strains with integument defects identified 307 knockout strains (Supplementary Table 1). Phenotype details of the abnormalities are reported in the phenotype descriptions available on the IMPC web portal for some strains. Among the 307 knockout strains identified as having an integument phenotype, 81 have a previously described role in cutaneous biology (*Abcb6*, *Abcd4*, *Acer1*, *Actg1*, *Acvr1b*, *Acvr2b*, *Aldh2*, *Alg1*, *Alg8*, *Ankle1*, *Arpc2*, *Arpc4*, *Ash1l*, *B2m*, *Barx2*, *Bms1*, *Cadm1*, *Carmil2*, *Cast*, *Cd109*, *Cd248*, *Cd5l*, *Cdc7*, *Chst8*, *Cog6*, *Cxcl17*, *Dbn1*, *Dct*, *Def6*, *Dgat2l6*, *Dnase1l2*, *Dnm1l*, *Dsg1b*, *Dtnbp1*, *Eif2s2*, *Far2*, *Foxn1*, *Furin*, *Gdap1*, *Gpr65*, *Gsta4*, *Igf3bp3*, *Il33*, *Ing4*, *Kdm4c*, *Krt31*, *Krtap17-1*, *Lama4*, *Lor*, *Lrig1*, *Lst1*, *Lyst*, *Mc1r*, *Mcub*, *Mplkip*, *Mpz*, *Myo10*, *Myo5a*, *Mysm1*, *Nacc1*, *Nampt*, *Nfkb1*, *Ovol1*, *P3h1*, *Per2*, *Ppl*, *Prss53*, *Ptprd*, *Rad18*, *Rassf8*, *Reql4*, *Ripk3*, *Rspo1*, *Sema3f*, *Slc17a9*, *Slc24a5*, *Smc3*, *Sparc*, *Svep1*, *Tmem79*, and *Ywhaz*). A total of 58 of these 81 genes have published knockout mouse models, while a knockout strain for the remaining genes with a cutaneous phenotype have not been reported. A total of 134 of the 307 genes have published knockout mouse models, 76 of which have no reported integument phenotype. For example, one of the genes that does not have a published knockout mouse strain, *structural maintenance of chromosomes 3* (*Smc3*), is known to be associated with hair abnormalities as part of the constellation of abnormalities seen in Cornelia de Lange syndrome in humans, characterized by bushy eyebrows and long curly eyelashes⁹. In total, 226 of the genes reported here have no published integument phenotype information and therefore represent novel integument disease genes.

Oculocutaneous data base search. To determine if any of the knockout strains with integument phenotypes also had ocular phenotypes, the 307 genes with cutaneous and/or hair coat colour phenotypes were searched in the IMPC database for coexisting ocular abnormalities detected during the eye test of the IMPC phenotyping pipeline. A total of 52 of these knockout strains were found to have concomitant ocular phenotypes (Supplementary Table 2). Seventeen of these 52 genes have previously described ocular and integumentary associations (e.g. *Sparc*^{10,11} and *Slc24a5*^{12–14}), and 22 genes have a previously described knockout mouse model (e.g. *Barx2*^{15,16}). In total, 35 genes with oculocutaneous phenotypes were novel findings (*Acvr2b*, *Alg10b*, *Anapc15*,

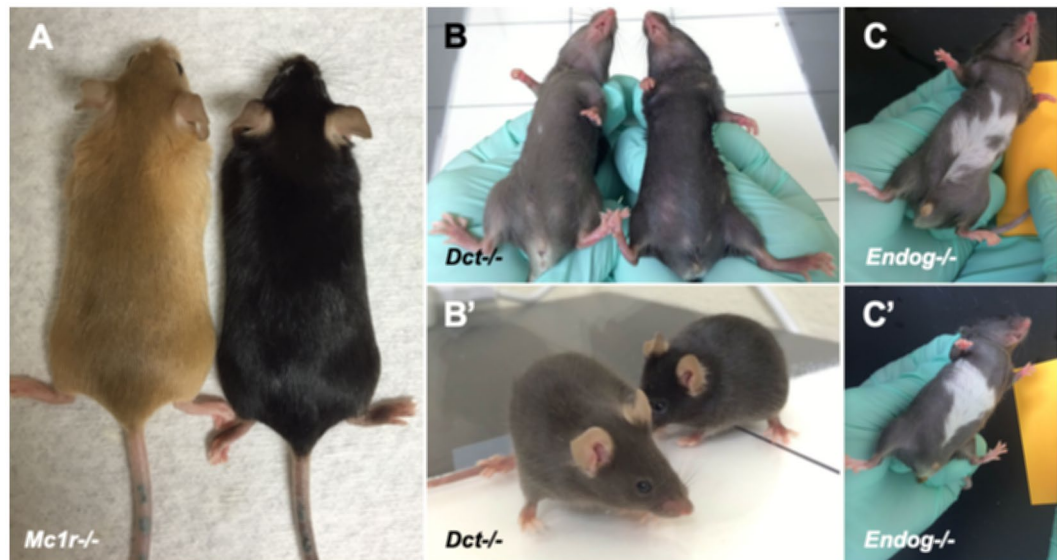


Figure 1. Examples of various types of coat color abnormalities seen in knockout mice. *Mc1r* knockout mice (A, left) have uniformly hypopigmented strawberry blonde coat color compared with wild type C57BL/6N (A, right) control mice. Mice with targeted deletion of the *Dct* gene have a brown-colored coat (B,B', left) compared with wild type C57BL/6N (B,B', right) control mice. Knockout mice with a white patch on the abdomen have been observed with variable penetrance. Just three of eight *Endog* knockout mice were found to have a white patch on the belly (C,C'), which may be sporadic, or may represent reduced penetrance related to the targeted deletion.

Ash1l, Bms1, Carmil2, Chic2, Chst8, Clk1, Cog6, Cotl1, Cox6b1, Dbn1, Dcp2, Dnase1l2, Dsg1b, Ggps1, Gp6, Hdglf3, Kdm8, Klhdc2, Mogs, Mym1, Nadk2, Nfkb1, Plac8, Rcc2, Sdr42e1, Sgip1, Sik3, Slc17a9, Slc38a10, Tcf7, Tmem30b, Tuft1). Several genes have been widely reported to be involved with normal function of both integumentary and ocular tissues. Other genes have described integument involvement but no reported ocular function (e.g. *Nfkb1, Mym1, Dsg1b, Dnase1l2, Dbn1, Cog6, Chst8, Carmil2, Bms1, Ash1l, Acvr2b*).

Discussion

Integument phenotypes. Among the 307 mouse strains that were found to have integument phenotypes, several coat pigmentation abnormalities were observed. Homogenous alteration in coat coloration was noted in some cases, such as in homozygous null *Mc1r*^{tm1.1(KOMP)Vlg} and *Dct*^{tm1b(KOMP)Mbp} mice (hereafter defined as *Mc1r*^{-/-} and *Dct*^{-/-} respectively) (Fig. 1A,B). *Mc1r*^{-/-} mice (Fig. 1A, left) have a uniformly hypopigmented coat color of strawberry blonde compared to uniformly black hair coat color of wild-type C57BL/6N controls (Fig. 1A, right). *Dct*^{-/-} mice have a gray coat color (Fig. 1B,B', left) compared to C57BL/6N controls (Fig. 1B,B', right). Heterogenous coat color changes were also noted, such as a white patch of hair coat on the abdomen. An example, homozygous null *Endog*^{tm1.1(KOMP)Vlg} mice (hereafter defined as *Endog*^{-/-}), were observed and annotated to have a white patch on the ventral abdomen (Fig. 1C,C'). However, only 3 out of 8 *Endog*^{-/-} had a white patch, which may either represent reduced penetrance of the *Endog*^{-/-} phenotype or a nonspecific phenotype unrelated to this gene. A total of 76 of the 307 knockout mouse strains reported here have previously described knockout mouse models but no integument phenotypes were reported. Allelic differences in the approach of the knockout strategy, strain-specific differences, and possible lack of careful attention to integument phenotypes may in part explain these discrepancies.

Oculocutaneous phenotypes. Of the 52 genes found to have both integument and eye phenotypes, 3 had ocular pigmentation abnormalities. Wild-type C57BL/6N controls had normal ocular fundus appearance (Fig. 2A), darkly pigmented choroidal melanocytes and retinal pigmented epithelium (RPE) (Fig. 2B), expected cutaneous pigmentation and black hair coat (Fig. 2C), and brown irides (Fig. 2D). Homozygous null *Dtnbp1*^{tm1a(EUCOMM)Hmgw} (hereafter *Dtnbp1*^{-/-}) mice have a lightly pigmented fundus with clearly visible choroidal vasculature (Fig. 2E), RPE and choroidal melanocyte hypopigmentation detectable in histological section (Fig. 2F), hypopigmentation of the skin and hair (Fig. 2G), and transillumination defects of the iris due to reduced pigmentation (Fig. 2H). These findings are consistent with human patients with mutations in *DTNBP1*, who are affected with cutaneous albinism, iris and retinal ocular albinism on eye exam, and RPE hypopigmentation apparent on histology¹⁷. The targeted deletion of the *Dtnbp1* gene produced by the IMPC recapitulates the main features of Hermansky-Pudlak syndrome (HPS), a rare autosomal recessive genetic disorder affecting roughly 1/500,000 individuals worldwide, but disproportionately present in 1/1800 people in Puerto Rico^{18,19}. The disease causes a constellation of oculocutaneous albinism, in addition to platelet abnormalities, and accumulation of ceroid lipofuscin²⁰. The pathophysiological basis of Hermansky-Pudlak syndrome is thought to be secondary to lysosomal dysfunction²¹. Mutations in at least nine different genes can cause this disorder, including *HPS1*,

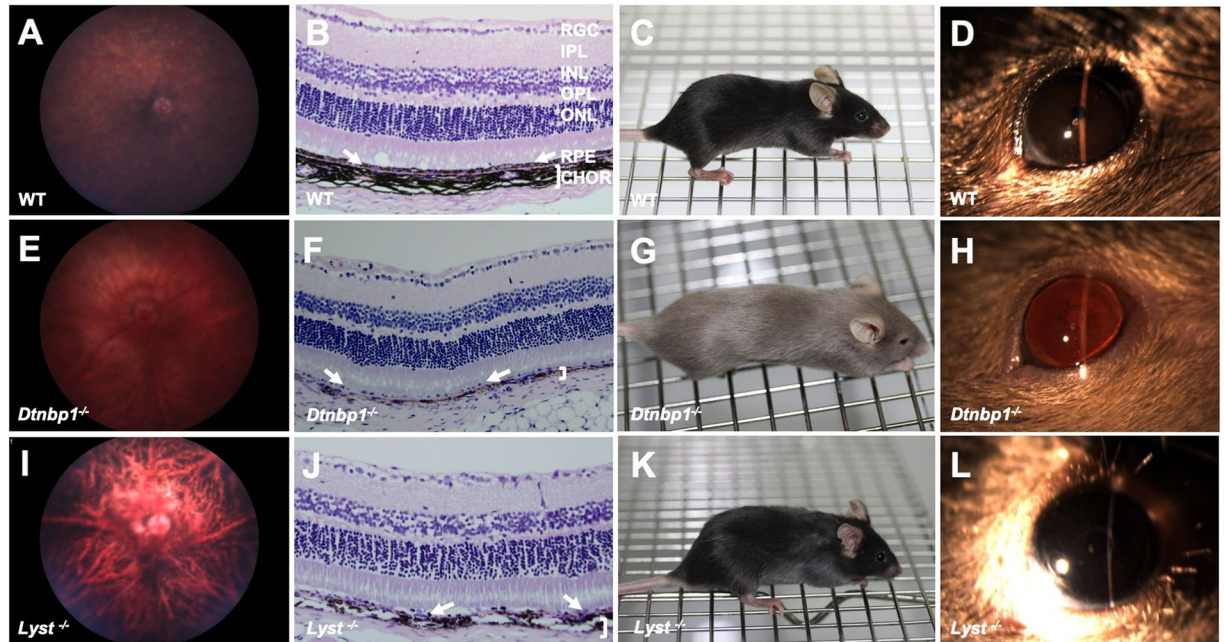


Figure 2. Mouse models of syndromic oculocutaneous albinism. Wild type control C57BL/6N mouse with normal retinal pigmentation (A), normal pigmentation of the retinal pigmented epithelium (arrows) and choroid (bracket) (B), normal black coat and cutaneous pigmentation (C), and normal iris pigmentation (D). In contrast, *Dtnbp1*^{-/-} mice, which recapitulate features of Hermansky-Pudlak syndrome, have severe hypopigmentation of the ocular fundus (E), marked RPE (arrows) and choroidal hypopigmentation (bracket) seen on histology (F), marked cutaneous and hair hypopigmentation (G), and transillumination defects of the iris due to severely reduced pigmentation (H). Mice with targeted deletion of *Lyst*, which recapitulate features of Chediak-Higashi syndrome, have moderately reduced fundus pigmentation (I), moderately reduced pigmentation of the RPE (arrows) and choroid (bracket) on histology (J), gray coat color (K), and a gray iris appearance (L). RGC (retinal ganglion cell layer), IPL (inner plexiform layer), INL (inner nuclear layer), IPL (inner plexiform layer), ONL (outer nuclear layer), RPE (retinal pigmented epithelium layer, arrows pointing to this monolayer of cells in B,F,J), CHOR (choroidal layer, demarcated by bracket in B,F,J).

HPS2 (aka *AP3B1*), *HPS3*, *HPS4*, *HPS5*, *HPS6*, *HPS7* (aka *DTNBP1*), *BLOC1S3*, and *BLOC1S6*^{2,22}. Diagnosis of HPS is based on the presence of hypopigmentation of the skin, hair, and eyes, as well as decreased dense bodies in platelets. Molecular testing is commercially available for *HPS1*, *HPS3*, and *HPS4*.

Dtnbp1^{-/-} produced by the IMPC is also similar to the phenotype of the spontaneously-occurring *Sdy* mouse¹⁸. *Sdy* mice have a large (~38 kb) deletion eliminating exons 6 and 7 of the *Dtnbp1* gene, which codes for Dysbindin protein²³. Some human patients with HPS harbor mutations in this gene, and Dysbindin is a component of the biogenesis of lysosome-related organelles complex 1 (BLOC-1). The BLOC-1 complex includes the proteins Pallidin, Muted, and Cappuccino, which are associated with HPS in mice. These proteins act in a coordinated fashion to regulate trafficking to lysosome associated organelles. Melanosomes are one such organelle, depending on BLOC-1 function. Both RPE cells and choroidal melanocytes in *Sdy* mouse eyes have pigmented granules that are abnormal in appearance and fewer in number compared to wild-type controls²³. The findings reported here strongly resemble the previously described phenotype of the spontaneous mutation of *Dtnbp1* in *Sdy* mice, and also supports the role of dysbindin protein in HPS.

The beige mutant mouse strain, originally reported in 1967, has a lighter coat color than wild-type mice²⁴. The mutation associated with this strain's coat color phenotype is located in the *Lyst* gene. *Lyst* mutations are associated with Chediak-Higashi syndrome (CHS) in humans, an oculocutaneous albinism syndrome analogous to HPS. The IMPC has produced a targeted homozygous null *Lyst* mutation (*Lyst*^{tm1b(EUCOMM)Wtsi}, hereafter *Lyst*^{-/-}). *Lyst*^{-/-} mice have reduced pigmentation of the RPE and thus highly visible underlying choroidal vasculature (Fig. 2I). The choroidal melanocytes beneath the RPE appear to be moderately hypopigmented (Fig. 2J) compared to C57BL/6N wild-type control animals (Fig. 2B). The hair coat color is slightly less pigmented resulting in a gray color (Fig. 2K) compared to wild-type C57BL/6N littermates (Fig. 2C). The iris is dark gray in *Lyst*^{-/-} mice, with no other obvious iris abnormalities noted (Fig. 2L).

Chediak-Higashi syndrome is a very rare autosomal recessive disease with less than 500 cases reported in the literature²⁵. The clinical syndrome consists of oculocutaneous albinism, in addition to immunodeficiency, and neuropathy, and is considered primarily to be a lysosomal disorder^{26,27}. It has been described in many mammalian species, including rats²⁸, cows²⁹⁻³¹, cats³², mink²⁹, foxes^{33,34}, and orca³⁵. Spontaneous mutations in mice, which recapitulate the main features of CHS were originally published more than 60 years ago³⁶⁻³⁸. The coat color of these mice is hypopigmented, so the name “beige” was adopted to describe their phenotype³⁹. “Beige” mice have reduced pigmentation in hair, skin, and eyes⁴⁰. A second “beige” mutation occurred on a non-agouti background,

and these animals have a charcoal gray coat color. The coat color is dependent on the genetic background of the animal⁴¹. “Beige” mice have pigment granules, but they are much larger and fewer in number than in control mice, and they are clumped together, giving the animals an overall hypopigmented appearance. Similarly, white blood cells and various cells of the lungs and kidneys also have giant granules^{24,41}. A progressive, insidious neurological disease affects the mice as they age⁴¹. Immunodeficiency has also been described in “beige” mice, specifically altering natural killer cell function, T-cell response to tumors, and decreased ability to kill bacteria, making these mice susceptible to infection^{42,43}. “Beige” mice weigh less and die younger than controls⁴¹.

Genetic analysis of a spontaneous mutation of “beige” mice revealed that the “beige” allele causes a deletion of a single amino acid (isoleucine) from the WD40 domain of the *Lyst* (lysosomal trafficking regulator) protein⁴⁴. Another spontaneous *Lyst* deletion was the result of an insertion of a LINE-1 element resulting in expression of a predicted truncated protein lacking the C-terminus, including the WD40 domain^{45,46}. The location within the WD40 domain suggests that the mutation may disrupt a protein-protein interaction⁴⁷. A total of 9 spontaneously occurring *Lyst* mutations are reported in the MGI mouse mutant index (data release 7.0).

CHS in humans is caused by mutations in the *CHS1*⁴⁸. Runkel *et al.* reported another mutation in the *Lyst* gene which they discovered in an ENU mutagenesis screen, resulting in a mouse with gray coat color which they named *Lyst*(bg-gray)⁴⁹. Similar to studies in “beige” mice, the authors reported enlarged and irregular melanosomes in all pigmented cell types. The knockout mutation produced by the IMPC and reported here was made on the C57BL/6N background strain. This mutant strain has a gray rather than beige coat color due to the dark coat pigmentation of the background strain. The cutaneous and ocular pigmentation abnormalities identified in *Lyst*^{-/-} mice by the IMPC are similar to those reported previously⁵⁰⁻⁵⁵. The *Lyst*^{-/-} mice in this report have gray coat color but no detectable iris pigmentation abnormalities (Fig. 2L), in agreement with a previous report, that demonstrated only very subtle iris transillumination defects⁴⁴. Ultrastructural analysis of the iris has shown enlarged melanosomes in beige mice⁴⁴. The fundus images of IMPC *Lyst*^{-/-} mice showed a reduced pigmentation pattern (Fig. 2I) that makes the choroidal vasculature more apparent compared to wild-type C57BL/6N control fundus (Fig. 2A). This distinctive pattern of choroidal vasculature can be described as tigroid, and is a feature of albinism⁵⁶ and some other pathological retinal states in human patients⁵⁷.

Novel oculocutaneous genes. The advantages of searching the IMPC data base to identify candidate genes for human syndromes are that mammalian genes can be targeted in mice but not in humans. Furthermore, the IMPC aims to knockout all genes in the mouse genome making it an unbiased approach to discover novel disease genes. This approach is particularly valuable for discovering genes relevant to multi-systemic human syndromes since the phenotyping process in knockout mice spans all organ systems and is harmonized between IMPC centers. Although there are distinct biological similarities between mouse and human eyes, the obvious differences between human and mouse are potential disadvantages, and disease genes in mice may not correlate to similar pathologies in humans in every case. The fact that a significant number of disease genes discovered through this study agrees with previously published phenotypes in mice and human patients validates the overall approach of the IMPC program in general. It is important to emphasize that only statistically significant phenotypes are reported by the IMPC, and partially penetrant phenotypes not meeting statistical significance such as the hypopigmented belly patch in the *Endog*^{-/-} mice may be sporadic and unrelated to the function of this gene.

We report here 226 novel genes associated with integument phenotypes using the power of reverse genetic screening in mouse strains with knockout mutations. Among these 226 novel cutaneous genes, 35 also had novel ocular phenotypes. These genes may eventually prove to be relevant in human phakomatoses, albinism, or other syndromes. If these genes are relevant to human patient populations, then these knockout strains may be useful animal models for testing pharmacologic, genetic, or cell-based therapies. All of the IMPC knockout strains reported here are readily available to the scientific community from IMPC repositories as frozen germplasm (e.g. www.mmrrc.org). Furthermore, the phenotype findings reported here in mice may help clinicians identify a more complete clinical picture of human patients found to have disease-causing mutations in these genes. Lastly, the molecular pathways in which these targeted genes function may shed light onto the mechanisms underlying dermatologic and oculocutaneous diseases.

Materials and Methods

Animals. Strict ethical review licensing and accrediting bodies were used by all IMPC centers that are reflective of their national legislation (Institutional Animal Care and Usage Committees, Regierung von Oberbayern, Com’Eth, Animal Welfare and Ethical Review Bodies, RIKEN Tsukuba Animal Experiments Committee, and Animal Care Committee). Phenotyping procedures were routinely assessed for animal welfare to minimize suffering.

An initial list of integument phenotypes was developed by searching the IMPC site under the ‘phenotypes’ tab for all integument phenotypes. This enabled the widest possible net to be populated, encompassing non-specific integument abnormalities (e.g. hair, skin, nails, etc.). A complete gene list from each phenotype was then exported to a spreadsheet, and a total gene population with all associated integument phenotypes was curated. The IMPC dataset returned a list of 307 genes associated with cutaneous phenotypes. These 307 genes were then cross-referenced with phenotypes related to ocular (eye) morphology, as well as other systemic phenotypes, by searching each gene individually. A total of 52 genes were identified to have both integument and ocular phenotypes. All genes with an integument phenotype were then queried in a literature search, specifically by searching www.pubmed.gov and www.google.com/scholar for each gene and the search term “skin,” “hair,” and “integument,” and similarly for the oculocutaneous genes for “eye” and/or the anatomical structure within the eye affected by the reported phenotype, such as “retina”. Each gene was then categorized as having no known

association with a mouse integument or ocular abnormality, or a human integument or ocular abnormality. An additional search was then completed for each gene using the search term “knockout” to evaluate if a mouse knockout model has been produced for any of the identified genes outside of the IMPC.

Ophthalmic phenotyping. Complete ophthalmic examinations were done on both eyes of each mouse at 15–16 weeks of age. A standardized phenotyping protocol for evaluation of ocular and adnexal structures was followed by all phenotyping centers. Examinations were carried out by highly trained and experienced technical staff using ocular imaging equipment that was overseen by lead site scientists. Examiners were trained to identify and annotate background lesions common in the C57BL/6N strain.

As described in prior publications from the IMPC, examinations were carried out in a randomized fashion, and examiners were masked to the genotype and zygosity of mice before and during examination⁵⁸. Each cohort of knockout mice was examined with wild-type animals serving as controls mixed into the cohort. If ocular phenotypes were discovered in a cohort of mice, they were considered to be due to the knockout genotype only if they were exclusively identified in the knockouts. Each examiner was presented with a varying number of mice of different knockout strains on a given examination day, ultimately totaling at least 7 male and 7 female homozygous (viable lines) or heterozygous (non-viable lines) knockout mice and 2 male and 2 female wild-type littermates per knockout strain. At some centers, pupillary light reflexes were evaluated, and the eyelids, third eyelid, conjunctiva, sclera, cornea, iris, and anterior chamber were examined using broad beam illumination at the highest intensity setting (Kowa SL-15, Kowa, Tokyo, Japan) with magnification set at 16×. The irides of all mice were then pharmacologically dilated with a solution of 1:7 10% phenylephrine HCl (Akorn Inc., Lake Forest, IL, USA); 1% tropicamide (Bausch & Lomb Inc., Tampa, FL, USA). The anterior segment was examined using a 0.1 mm slit beam at the highest intensity setting to evaluate the cornea, anterior chamber, and lens, followed by posterior segment evaluation including the vitreous chamber. Fundus examination was performed via indirect ophthalmoscopy using a 60 diopter double aspheric handheld lens (Volk Optical Inc, Mentor, OH, USA).

Background lesions were identified based on expected changes associated with the strain-specific C57BL/6N and retinal degeneration 8 (*rd8*) mutations⁵⁹. Findings in both categories were excluded from the study’s dataset. Background lesions occurred at approximately equal frequencies among knockout and wild-type strains⁶⁰.

Histology. Mice were euthanized according to IMPC protocols and both eyes were immediately collected and immersion fixed in 10% neutral-buffered formalin. Parasagittal sections were processed routinely, embedded in paraffin, sectioned (4–5 μm), and stained with hematoxylin and eosin. The histopathology was evaluated by a veterinary pathologist. Focal retinal dysplasia observed during histopathology analysis were considered background strain changes attributed to C57BL/6N genetic background and were not included as genotype-associated findings.

Ocular imaging. At some centers, mice with an ocular lesion suspected to be related to genotype were flagged for further examination using advanced imaging techniques. These mice were anesthetized with an intraperitoneal injection of ketamine/midazolam (50–75/1–2 mg/kg). Eyes were dilated with tropicamide 1% and phenylephrine 2.5% drops and lubricated with artificial tears containing methylcellulose. Slit lamp anterior segment and fundus images were acquired with a Micron III or IV retinal imaging microscope (Phoenix Research Laboratories).

References

1. Neau, J. P., Godeneche, G., Mathis, S. & Guillet, G. Neurodermatology. *Handb. Clin. Neurol* **121**, 1561–1594 (2014).
2. Montoliu, L. *et al.* Increasing the complexity: new genes and new types of albinism. *Pigment Cell Melanoma Res* **27**, 11–18 (2014).
3. Brown, S. D. & Moore, M. W. Towards an encyclopaedia of mammalian gene function: the International Mouse Phenotyping Consortium. *DisModel Mech* **5**, 289–292 (2012).
4. Brown, S. D. & Moore, M. W. The International Mouse Phenotyping Consortium: past and future perspectives on mouse phenotyping. *Mamm. Genome* **23**, 632–640 (2012).
5. Koscielny, G. *et al.* The International Mouse Phenotyping Consortium Web Portal, a unified point of access for knockout mice and related phenotyping data. *Nucleic Acids Res.* **42** (Database issue), D802–809 (2014).
6. Karp, N. A. *et al.* Applying the ARRIVE Guidelines to an *In Vivo* Database. *PLoS Biol.* **13**, e1002151 (2015).
7. Dickinson, M. E. *et al.* High-throughput discovery of novel developmental phenotypes. *Nature*. **537**, 508–514 (2016).
8. Kurbatova, N., Mason, J. C., Morgan, H., Meehan, T. F. & Karp, N. A. PhenStat: A Tool Kit for Standardized Analysis of High Throughput Phenotypic Data. *PLoS One*. **10**, e0131274 (2015).
9. Park, K. H., Lee, S. T., Ki, C. S. & Byun, S. Y. Cornelia de Lange Syndrome with NIPBL gene mutation: a case report. *J. Korean Med. Sci.* **25**, 1821–1823 (2010).
10. Haddadin, R. I. *et al.* SPARC-null mice exhibit lower intraocular pressures. *Invest Ophthalmol Vis Sci* **50**, 3771–3777 (2009).
11. Bradshaw, A. D. *et al.* SPARC-null mice display abnormalities in the dermis characterized by decreased collagen fibril diameter and reduced tensile strength. *J Invest Dermatol* **120**, 949–955 (2003).
12. Basu Mallick, C. *et al.* The light skin allele of SLC24A5 in South Asians and Europeans shares identity by descent. *PLoS Genet.* **9**, e1003912 (2013).
13. Wei, A. H. *et al.* Exome sequencing identifies SLC24A5 as a candidate gene for nonsyndromic oculocutaneous albinism. *J Invest Dermatol* **133**, 1834–1840 (2013).
14. Vogel, P. *et al.* Ocular albinism and hypopigmentation defects in *Slc24a5*^{-/-} mice. *Vet Pathol.* **45**, 264–279 (2008).
15. Olson, L. E., Zhang, J., Taylor, H., Rose, D. W. & Rosenfeld, M. G. Barx2 functions through distinct corepressor classes to regulate follicle remodeling. *Proc. Natl. Acad. Sci. USA.* **102**, 3708–3713 (2005).
16. Tsau, C. *et al.* Barx2 and Fgf10 regulate ocular branching morphogenesis by controlling extracellular matrix remodeling. *Development.* **138**, 3307–3317 (2011).
17. Bryan, M. M. *et al.* Clinical and molecular phenotyping of a child with Hermansky-Pudlak syndrome-7, an uncommon genetic type of HPS. *Mol. Genet. Metab.* **120**, 378–383 (2017).
18. Swank, R. T., Sweet, H. O., Davisson, M. T., Reddington, M. & Novak, E. K. Sandy: a new mouse model for platelet storage pool deficiency. *Genet. Res.* **58**, 51–62 (1991).

19. Santiago Borrero, P. J. *et al.* Genetic testing for oculocutaneous albinism type 1 and 2 and Hermansky-Pudlak syndrome type 1 and 3 mutations in Puerto Rico. *J. Invest. Dermatol.* **126**, 85–90 (2006).
20. El-Chemaly, S. & Young, L. R. Hermansky-Pudlak Syndrome. *Clin. Chest. Med.* **37**, 505–511 (2016).
21. Takahashi, A. & Yokoyama, T. Hermansky-Pudlak syndrome with special reference to lysosomal dysfunction. A case report and review of the literature. *Virchows Arch. A. Pathol. Anat. Histopathol* **402**, 247–258 (1984).
22. Loredana Asztalos, M. *et al.* Hermansky-Pudlak syndrome: Report of two patients with updated genetic classification and management recommendations. *Pediatr. Dermatol.* **34**, 638–646 (2017).
23. Li, W. *et al.* Hermansky-Pudlak syndrome type 7 (HPS-7) results from mutant dysbindin, a member of the biogenesis of lysosome-related organelles complex 1 (BLOC-1). *Nat. Genet.* **35**(1), 84–9. Epub 2003 Aug 17 (2003).
24. Lutzner, M. A., Lowrie, C. T. & Jordan, H. W. Giant granules in leukocytes of the beige mouse. *J. Hered* **58**, 299–300 (1967).
25. Kaplan, J., De Domenico, I. & Ward, D. M. Chediak-Higashi syndrome. *Curr. Opin. Hematol.* **15**, 22–29 (2008).
26. White, J. G. The Chediak-Higashi syndrome: a possible lysosomal disease. *Blood.* **28**, 143–156 (1966).
27. Shiflett, S. L., Kaplan, J. & Ward, D. M. Chediak-Higashi Syndrome: a rare disorder of lysosomes and lysosome related organelles. *Pigment Cell Res* **15**, 251–257 (2002).
28. Mori, M. *et al.* A new beige mutant rat ACI/N-Lystbg-Kyo. *Exp. Anim.* **52**, 31–36 (2003).
29. Padgett, G. A., Leader, R. W., Gorham, J. R. & O'Mary, C. C. The familial occurrence of the Chediak-Higashi syndrome in mink and cattle. *Genetics.* **49**, 505–512 (1964).
30. Kunieda, T. *et al.* Localization of the locus responsible for Chediak-Higashi syndrome in cattle to bovine chromosome 28. *Anim. Genet.* **31**, 87–90 (2000).
31. Ayers, J. R., Leipold, H. W. & Padgett, G. A. Lesions in Brangus cattle with Chediak-Higashi syndrome. *Vet. Pathol.* **25**, 432–436 (1988).
32. Kramer, J. W., Davis, W. C., Prieur, D. J., Baxter, J. & Norsworthy, G. D. An inherited disorder of Persian cats with intracytoplasmic inclusions in neutrophils. *J. Am. Vet. Med. Assoc.* **166**, 1103–1104 (1975).
33. Nes, N., Lium, B., Braend, M. & Sjaastad, O. A Chediak-Higashi-like syndrome in Arctic blue foxes. *Finsk Veterinaertidsskrift* **89**, 313 (1983).
34. Sjaastad, O. V., Blom, A. K., Stormorken, H. & Nes, N. Adenine nucleotides, serotonin, and aggregation properties of platelets of blue foxes (*Alopex lagopus*) with the Chediak-Higashi syndrome. *Am. J. Med. Genet.* **35**, 373–378 (1990).
35. Taylor, R. F. & Farrell, R. K. Light and electron microscopy of peripheral blood neutrophils in a killer whale affected with Chediak-Higashi syndrome. *Fed. Proc* **32**, 822 (1973).
36. Kelley, E. M. *Mouse News Lett.* **16**, 36 (1957).
37. Lane, P. W. Bg<2>-beige-2J. *Mouse News Lett* **26**, 35 (1962).
38. Davisson, M. T. & Lewis, S. E. Chromosome aberrations associated with induced mutations: effect on mapping new mutations. *Branbury Report 34: Biology of Mammalian Germ Cell Mutagenesis*, 195–206 (Cold Spring Harbor Laboratory Press, 1990).
39. Witham, B. & Lane, P. W. Why C57BL/6J-bg¹ mice are not beige. *JAX Notes* **445**, 4 (1991).
40. Sundberg, J. P. The Beige (BGJ) Mutation. *JAX Notes* (1992).
41. Murphy, E. D., Harrison, D. E. & Roths, J. B. Giant granules of beige mice. A quantitative marker for granulocytes in bone marrow transplantation. *Transplantation.* **15**, 526–530 (1973).
42. Roder, J. C. The beige mutation in the mouse. I. A stem cell predetermined impairment in natural killer cell function. *J. Immunol.* **123**, 2168–2173 (1979).
43. Roder, J. C. *et al.* A new immunodeficiency disorder in humans involving NK cells. *Nature.* **284**, 553–555 (1980).
44. Trantow, C. M. *et al.* Lyst Mutation in Mice Recapitulates Iris Defects in Human Exfoliation Syndrome. *Invest. Ophthalmol. Vis. Sci.* **50**, 1205–1214 (2009).
45. Perou, C. M. *et al.* Identification of the murine beige gene by YAC complementation and positional cloning. *Nat. Genet.* **13**, 303–308 (1996).
46. Perou, C. M., Pryor, R. J., Naas, T. P. & Kaplan, J. The bg allele mutation is due to a LINE1 element retrotransposition. *Genomics* **42**, 366–368 (1997a).
47. Smith, T. F., Gaitatzes, C., Saxena, K. & Neer, E. J. The WD repeat: a common architecture for diverse functions. *Trends Biochem. Sci.* **24**, 181–185 (1999).
48. Jackson, I. J. Homologous pigmentation mutations in human, mouse and other model organisms. *Hum. Mol. Genet* **6**, 1613–1624 (1997).
49. Runkel, F. *et al.* Grey, a novel mutation in the murine Lyst gene, causes the beige phenotype by skipping of exon 25. *Mamm. Genome.* **17**, 203–210 (2006).
50. Collier, L. L., Bryan, G. M. & Prieur, D. J. Ocular manifestations of the Chediak-Higashi syndrome in four species of animals. *J. Am. Vet. Med. Assoc.* **175**, 587–590 (1979).
51. Collier, L. L., Prieur, D. J. & King, E. J. Ocular melanin pigmentation anomalies in cats, cattle, mink, and mice with Chediak-Higashi syndrome: histologic observations. *Curr. Eye Res.* **3**, 1241–1251 (1984).
52. Robison, W. G. Jr. & Kuwabara, T. Light-induced alterations of retinal pigment epithelium in black, albino, and beige mice. *Exp. Eye Res.* **22**, 549–557 (1976).
53. Robison, W. G. Jr., Kuwabara, T. & Cogan, D. G. Lysosomes and melanin granules of the retinal pigment epithelium in a mouse model of the Chediak-Higashi syndrome. *Invest. Ophthalmol* **14**, 312–317 (1975).
54. Valenzuela, R. & Morningstar, W. A. The ocular pigmentary disturbance of human Chediak-Higashi syndrome: a comparative light- and electron-microscopic study and review of the literature. *Am. J. Clin. Pathol.* **75**, 591–596 (1981).
55. Anderson, M. G., Hawes, N. L., Trantow, C. M., Chang, B. & John, S. W. M. Iris phenotypes and pigment dispersion caused by genes influencing pigmentation. *Pigment Cell Melanoma Res* **21**, 565–578 (2008).
56. Shibuya, K., Hirai, T., Nunoya, T. & Sugimoto, K. Unilateral ocular subalbinism in a laboratory Beagle dog. *Vet. Ophthalmol.* **6**, 169–172 (2003).
57. van den Born, L. I. *et al.* Thr4Lys rhodopsin mutation is associated with autosomal dominant retinitis pigmentosa of the cone-rod type in a small Dutch family. *Ophthalmic Genet* **15**, 51–60 (1994).
58. Moore, B. A. *et al.* Identification of genes required for eye development by high through-put screening of mouse knockouts. *Nature Communications Biology* **2**, 97 (2019).
59. Mattapallil, M. J. *et al.* The Rd8 mutation of the Crb1 gene is present in vendor lines of C57BL/6N mice and embryonic stem cells, and confounds ocular induced mutant phenotypes. *Invest. Ophthalmol. Vis. Sci.* **53**, 2921–2927 (2012).
60. Moore, B. A. *et al.* A Population Study of Common Ocular Abnormalities in C57BL/6N Rd8 Mice. *Invest. Ophthalmol. Vis. Sci.* **59**, 2252–2261 (2018).

Acknowledgements

The authors thank all the various funding agencies supporting the IMPC. The authors gratefully acknowledge their funding sources, including the Government of Canada through Genome Canada/Ontario Genomics OGI-051 (C.M.) and NIH K08EY027463 (A.M.), and NIH U54HG006364, U42OD011175, 5UM1OD023222, and UM1OD023321 (K.C.K.L. and C.M.).

Author Contributions

Bret A. Moore performed gene analysis, wrote the manuscript, created the figures, and was directly and indirectly involved in ocular phenotyping and data procurement. Ala Moshiri performed gene analysis, wrote the manuscript, and created the figures. Ann M. Flenniken created the figures and was indirectly involved in ocular phenotyping and data procurement. Zorana Berberovic, Celeste Owen, Susan Newbigging, Hibret Adissu, Mohammad Eskandarian, Sara M. Thomasy, Colin McKerlie, Lauryl M.J. Nutter, K.C. Kent Lloyd, and Christopher J. Murphy were directly or indirectly involved in ocular phenotyping and data procurement. Ata S. Moshiri was involved with writing the manuscript. David Clary was involved with data procurement. The IMPC produced the data used in this study. All authors read and approved the final manuscript.

Additional Information

Supplementary information accompanies this paper at <https://doi.org/10.1038/s41598-019-47286-2>.

Competing Interests: The authors declare no competing interests.

Publisher's note: Springer Nature remains neutral with regard to jurisdictional claims in published maps and institutional affiliations.



Open Access This article is licensed under a Creative Commons Attribution 4.0 International License, which permits use, sharing, adaptation, distribution and reproduction in any medium or format, as long as you give appropriate credit to the original author(s) and the source, provide a link to the Creative Commons license, and indicate if changes were made. The images or other third party material in this article are included in the article's Creative Commons license, unless indicated otherwise in a credit line to the material. If material is not included in the article's Creative Commons license and your intended use is not permitted by statutory regulation or exceeds the permitted use, you will need to obtain permission directly from the copyright holder. To view a copy of this license, visit <http://creativecommons.org/licenses/by/4.0/>.

© The Author(s) 2019

Consortia International Mouse Phenotyping Consortium

Steve Brown⁹, Sara Wells⁹, Ann-Marie Mallon⁹, Arthur L. Beaudet¹⁰, Martin Hrabe de Angelis¹¹, Natasha Karp¹², Bob Braun¹³, Yann Herault^{14,15,16,17,18}, Xiang Gao¹⁹, Yuichi Obata²⁰, Paul Flicek²¹, Terrence Meehan²¹, Helen Parkinson²¹, Damian Smedley²², J. K. Seong²³, Glauco Tocchini-Valentini²⁴ & Fabio Mammano²⁴

⁹Medical Research Council Harwell Institute (Mammalian Genetics Unit and Mary Lyon Centre), Harwell, Oxfordshire, OX11 0RD, UK. ¹⁰Department of Molecular and Human Genetics, Baylor College of Medicine, Houston, TX, 77030, USA. ¹¹German Mouse Clinic, Institute of Experimental Genetics, Helmholtz Zentrum München, German Research Center for Environmental Health, Ingolstädter Landstraße 1, 85764, Neuherberg, Germany. ¹²The Wellcome Trust Sanger Institute, Wellcome Genome Campus, Hinxton, Cambridge, CB10 1SA, UK. ¹³The Jackson Laboratory, Bar Harbor, ME, 04609, USA. ¹⁴Institut de Génétique et de Biologie Moléculaire et Cellulaire, Université de Strasbourg, 1 rue Laurent Fries, 67404, Illkirch, France. ¹⁵Centre National de la Recherche Scientifique, UMR7104, Illkirch, France. ¹⁶Institut National de la Santé et de la Recherche Médicale, U1258, Illkirch, France. ¹⁷Université de Strasbourg, 1 rue Laurent Fries, 67404, Illkirch, France. ¹⁸CELPEDIA, PHENOMIN, Institut Clinique de la Souris (ICS), CNRS, INSERM, University of Strasbourg, 1 rue Laurent Fries, 67404, Illkirch, Graffenstaden, France. ¹⁹SKL of Pharmaceutical Biotechnology and Model Animal Research Center, Collaborative Innovation Center for Genetics and Development, Nanjing Biomedical Research Institute, Nanjing University, Nanjing, 210061, China. ²⁰RIKEN BioResource Center, Tsukuba, Ibaraki, 305-0074, Japan. ²¹European Molecular Biology Laboratory, European Bioinformatics Institute, Wellcome Genome Campus, Hinxton, Cambridge, CB10 1SD, UK. ²²Clinical Pharmacology, Charterhouse Square, Barts and the London School of Medicine and Dentistry, Queen Mary University of London, London, EC1M 6BQ, UK. ²³Korea Mouse Phenotyping Consortium (KMPC) and BK21 Program for Veterinary Science, Research Institute for Veterinary Science, College of Veterinary Medicine, Seoul National University, 599 Gwanangno, Gwanak-gu, Seoul, 08826, South Korea. ²⁴Monterotondo Mouse Clinic, Italian National Research Council (CNR), Institute of Cell Biology and Neurobiology, Adriano Buzzati-Traverso Campus, Via Ramarini, I-00015, Monterotondo Scalo, Italy.