

UCLA

UCLA Previously Published Works

Title

Viscosity and viscosity anomalies of model silicates and magmas: A numerical investigation

Permalink

<https://escholarship.org/uc/item/8p23p0gm>

Journal

Chemical Geology, 346

ISSN

0009-2541

Authors

Bauchy, M
Guillot, B
Micoulaut, M
[et al.](#)

Publication Date

2013-05-07

DOI

10.1016/j.chemgeo.2012.08.035

Peer reviewed

Viscosity and viscosity anomalies of model silicates and magmas: a numerical investigation

M. Bauchy, B. Guillot, M. Micoulaut*, N. Sator

Laboratoire de Physique Théorique de la Matière Condensée,
Université Pierre et Marie Curie, 4 Place Jussieu, F-75252 Paris Cedex 05, France

(Dated: September 17, 2012)

We present results for transport properties (diffusion and viscosity) using computer simulations. Focus is made on a densified binary sodium disilicate $2\text{SiO}_2\text{-Na}_2\text{O}$ (NS2) liquid and on multicomponent magmatic liquids (MORB, basalt). In the NS2 liquid, results show that a certain number of anomalies appear when the system is densified: the usual diffusivity maxima/minima is found for the network-forming ions (Si,O) whereas the sodium atom displays three distinct régimes for diffusion. Some of these features can be correlated with the obtained viscosity anomaly under pressure, the latter being fairly well reproduced from the simulated diffusion constant. In model magmas (MORB liquid), we find a plateau followed by a continuous increase of the viscosity with pressure. Finally, having computed both diffusion and viscosity independently, we can discuss the validity of the Eyring equation for viscosity which relates diffusion and viscosity. It is shown that it can be considered as valid in melts with a high viscosity. On the overall, these results highlight the difficulty of establishing a firm relationship between dynamics, structure and thermodynamics in complex liquids.

PACS numbers:

Keywords:

I. INTRODUCTION

Viscosity is one of the key properties influencing the overall behavior of magmatic liquids. It is a fundamental property in Earth Sciences and has therefore led after nearly five decades of intensive research to a huge body of experimental and theoretical studies and data base (Giordano et al., 2008; Mysen and Richet, 2005). Systematic investigations with composition and temperature in simple or complex silicates have been performed, and some generic trends have been identified that have become quite popular. For instance, it has been found that numerous systems were displaying an Arrhenius behavior (Micoulaut, 2010) with temperature of the form $\eta = \eta_0 \exp[E_A/k_B T]$ where E_A represents the activation energy for viscous flow. When properly rescaled with a reference temperature, T_g , at which the viscosity is 10^{12} Poise, two categories of liquids have been identified (Angell, 1995): those which remain Arrhenius-like in the super-cooled liquid over the entire range of temperatures implying that E_A does not depend on T , and those which display a curvature in the Arrhenius representation (a semi-log plot as a function of inverse temperature) indicating that one has a temperature dependence in the activation energy for viscous flow (Wang et al., 2006). Usually, such liquids are fitted quite successfully with a Tamman-Vogel-Fulcher (TVF) law (Pathmanathan and Johari, 1990; Giordano and Dingwell, 2003a,b): $\eta = \eta_0 \exp(A/(T - T_0))$, A and T_0 being constants.

There has been a continuing effort to measure viscosity as function of pressure (Scarfe, 1973; Kushiro, 1976, 1978; 1986; Kushiro et al., 1976; Scarfe et al., 1979; Brearley et al., 1986; Dunn and Scarfe, 1986; Mori et al., 2000; Suzuki et al., 2002, 2005, 2011; Reid et al., 2001; 2003; Tinker et al., 2004; Liebske et al., 2005; Ardia et al., 2008; Del Gaudio

and Behrens, 2009). At constant temperature, the evolution of viscosity with pressure is complex and depends on the composition of the silicate melt, in particular on its degree of depolymerization. With highly polymerized melts (e.g. albite and dacite) the viscosity decreases continuously with pressure, though its behavior above the maximal pressure of investigation ($\simeq 7$ GPa for albite and dacite) cannot be clearly anticipated. However, it is observed that the decrease of the viscosity with pressure becomes more gradual when the temperature is raised and can lead to a plateau value at high pressure (e.g. jadeite). When the melt is less polymerized (e.g. albite-diopside system), after an initial decrease, and according to the temperature, the viscosity exhibits a plateau value or a weakly pronounced minimum with the pressure. With depolymerized melts (e.g. diopside and peridotite) a different situation occurs. The viscosity first increases with rising pressure and reaches a maximum value prior to decrease at higher pressure, but higher the degree of depolymerization of the melt more pronounced is the viscosity maximum. Moreover, in a more general way, the pressure evolution of the viscosity has been found to be (anti-) correlated with that of the oxygen and silicon diffusion coefficients (Shimizu and Kushiro, 1991; Poe et al., 1997; Reid et al., 2001; Tinker et al., 2003), a finding which has been interpreted as the signature of a pressure-induced structural rearrangement.

The understanding of changes in the viscous flow with applied pressure can be suitably investigated by molecular dynamics (MD) simulations. There are several ways to compute viscosity. Readers should refer to Allen and Tildesley (1987) for a detailed discussion and presentation. At equilibrium, the computation of viscosity from MD simulations can be performed by using the Green-Kubo (GK) formalism which is based on the calculation of the stress auto-correlation function (Boon and Yip, 1980) given by:

$$F(t) = \langle P_{\alpha\beta}(t)P_{\alpha\beta}(0) \rangle \quad (1)$$

where $P_{\alpha\beta}(t)$ is the $\alpha\beta$ component ($\alpha, \beta = (x, y, z)$) of the molec-

*Corresponding author: mmi@lptmc.jussieu.fr

ular stress tensor defined by:

$$P_{\alpha\beta} = \sum_{i=1}^N m_i v_i^\alpha v_i^\beta + \sum_{i=1}^N \sum_{j>i}^N F_{ij}^\alpha r_{ij}^\beta \quad \alpha \neq \beta, \quad (2)$$

where F_{ij}^α is the component α of the force between the ions i and j , r_{ij}^β and v_i^β being the β component of the distance between two atoms i and j , and the velocity of atom i , respectively. Alternative forms for $P_{\alpha\beta}$ exist (Allen and Tildesley, 1987) but these are found to lead to spurious effects when periodic boundary conditions are considered (Lee, 2007) or when the Ewald sum is not performed in a neat way (Alejandre et al., 1995; Allen et al., 1994). In this case, $F(t)$ is found to not decay to zero in the long-time limit, as expected (Lee, 2007; Green, 1957; Kubo, 1957). One other possibility is to compute the viscosity within the framework of Non-Equilibrium Molecular Dynamics (Lees and Edwards, 1972). Here, the ratio of shear stress to a strain rate is computed and extrapolated to the limit of zero driving force (Borodin et al., 2009; Fernandez et al. 2004; Cherne and Deymier, 1998).

Coming back to the GK formalism commonly used with MD simulations, the viscosity is calculated from the time integral of the stress auto-correlation function $F(t)$ (see eqs. (1) and (2)),

$$\eta = \frac{1}{k_B T V} \int_0^\infty F(t) dt. \quad (3)$$

The viscosity of a few silicate melts has been evaluated by MD simulation in following this route. Ogawa et al. (1990) were the first to evaluate the viscosity of a silicate melt (a sodium disilicate) by MD simulation but their results are uncertain due to a poor statistics. For silica, Horbach and Kob (1999) determined the temperature behavior and Barrat et al. (1997) studied the pressure dependence at high temperatures but without pointing out explicitly that their results showed a viscosity minimum at about 20 GPa. More recently Lacks et al. (2007) in investigating by MD the properties of silicate liquids along the MgO-SiO₂ join found a viscosity minimum at about 20 GPa in pure silica, a viscosity minimum which disappears progressively with increasing MgO content. Since then, these results have been confirmed by the MD studies of Adjaoud et al. (2008, 2011) on Mg₂SiO₄ melts, those of Spera et al. (2011) on molten enstatite and also by first-principles MD calculations of Karki and Stixrude (2010a,b) on liquid silica and on liquid enstatite. We finally mention the recent studies of Karki et al. (2011) and Gosh and Karki (2011) on anorthite liquid and Mg₂SiO₄ liquid, respectively.

II. MODELING SILICATES

A. Simulation details

To complement the above MD studies and to bring some new information, we have investigated in the present study two silicate melts exhibiting comparable NBO/T ratio ($\simeq 0.8$ and 1) but with very different chemical compositions;

a sodium disilicate (NS2) and a mid-ocean ridge basalt (MORB). The molecular dynamics (MD) simulations were performed with the DL_POLY 2.0 code (Smith and Forrester, 1996) in NPT Ensemble. The equations of motions for atoms were solved with a time step of 1-2 fs (10^{-15} s) by the leap-frog algorithm.

Liquid Na₂O-2SiO₂ has been simulated by placing 666 silicon, 666 sodium, and 1668 oxygen atoms in a cubic box with periodic boundary conditions. As the atoms are bearing charges (ions), the long range coulombic forces are evaluated by a Ewald sum. The atoms interact via a two-body potential (Born-Majer type) parametrized by Teter (2003, see also Cormack et al., 2003), which writes

$$V_{ij}(r) = A_{ij} \cdot \exp(-r/\rho_{ij}) - C_{ij}/r^6 + z_i z_j / r, \quad (4)$$

where r is the distance between atoms i and j , z_i is the effective charge associated with the ion i , and where A_{ij} , ρ_{ij} and C_{ij} are parameters describing repulsive and dispersive forces between the ions i and j . In the present report, we do not focus on structure and thermodynamic properties of liquid NS2 simulated with this potential and for a detailed analysis and comparison with experimental data we refer the reader to Du and Cormack (2004, 2005). Notice that at zero pressure and 300K the density of the simulated NS2 glass is equal to 2.45 g/cm³, i.e. quite close to the experimental value (Vaills et al., 2001) 2.37 g/cm³.

The mid-ocean ridge basalt (MORB), a nine component system (0.13 wt% K₂O, 2.94 wt% Na₂O, 11.87 wt% CaO, 7.77 wt% MgO, 8.39 wt% FeO, 1.15 wt% Fe₂O₃, 15.11 wt% Al₂O₃, 1.52 wt% TiO₂ and 50.59 wt% SiO₂), has been simulated with a two-body potential of the same form as eq. (4). The chemical composition of the MORB melt and the potential parameters are those given by Guillot and Sator (2007a) in their simulation study of natural silicate melts (see Tables 1 and 2 therein). The simulated sample of MORB was composed of 3,000 atoms (555 Si, 12 Ti, 195 Al, 9 Fe³⁺, 60 Fe²⁺, 126 Mg, 141 Ca, 63 Na, 3 K, and 1,836 O) contained in a cubic box with periodic boundary conditions. The control parameters (time step, Ensemble, etc.) of the simulation are the same as for liquid NS2. The density of MORB at liquidus temperature and its equation of state (i.e. density versus pressure) are well reproduced by the MD calculation (for a detailed description of the properties of the MORB melt, see Guillot and Sator 2007a,b). Notice that long simulation runs ($\simeq 10$ ns or 10^7 time steps) were performed to reach a good statistics when evaluating the viscosity by the Green-Kubo integrand.

Before presenting results, it is worthwhile to keep in mind some key data when one is about to calculate the viscosity of a supercooled melt. In using a high performance computer, the longest MD run that can be performed (in a reasonable time) for a system composed of $\simeq 3,000$ atoms is about 1 μ s (or 10^9 MD steps). To observe on this timescale the diffusion of atoms in the simulation box, the mean square displacement of each atom after 1 μ s has to be (on average) of the order of $\simeq 10$ \AA^2 (the mean distance between two nearest neighbors is roughly 3 \AA in a melt, so the diffusive regime is reached when each atom has interchanged its position with a nearest neighbor).

Therefore, the smallest diffusion coefficient that can be evaluated over a $1 \mu\text{s}$ MD run is equal to $\simeq 2 \times 10^{-14} \text{ m}^2/\text{s}$ (from Einstein relation $D_{\min} = \langle r_{\min}^2 \rangle / 6t_{\max}$ where $\langle r_{\min}^2 \rangle = 10 \text{ \AA}^2$ and $t_{\max} = 10^{-6} \text{ s}$). In applying the Eyring theory to viscous flow, the viscosity η can be deduced from the diffusion coefficient D of network forming ions through the equation,

$$\eta = \frac{k_B T}{\lambda D} \quad (5)$$

where T is the temperature and λ a jump distance in the viscous flow. Experimentally it has been shown (Shimizu and Kushiro, 1984) that this equation works well with viscous liquids (e.g. silicates with high silica contents) provided that the D value is assigned to that of O or Si atoms and $\lambda \simeq 2.8 \text{ \AA}$, the oxygen-oxygen mean distance in silicate melts. Using equ. (5), a value of D_O equal to $2 \times 10^{-14} \text{ m}^2/\text{s}$ leads to a corresponding viscosity of about $3000 \text{ Pa}\cdot\text{s}$ at 1473 K . We can use the Maxwell relation for which the relaxation time for viscous flow is related to the viscosity through the equation, $\tau_{\text{relax}} = \eta / G_\infty$, where $G_\infty \simeq 10^{10} \text{ Pa}$ is the shear modulus at infinite frequency (Dingwell and Webb, 1989). So to fully relax a viscous melt of viscosity $\eta \simeq 10^4 \text{ Pa}\cdot\text{s}$ one needs to perform a MD run longer than $\tau_{\text{relax}} = 1 \mu\text{s}$, a finding consistent with the evaluation based on the diffusion. Although qualitative, these estimates are useful because they point out that only the low viscosity regime (i.e. $\eta \ll 10^4 \text{ Pa}\cdot\text{s}$) can be investigated by MD simulation, the highly viscous regime ($10^4 - 10^{12} \text{ Pa}\cdot\text{s}$) being unreachable with usual numerical resources. In the present study our MD runs did not exceed $\simeq 10 \text{ ns}$, which means that only a viscosity value smaller than $\simeq 10 \text{ Pa}\cdot\text{s}$ (100 Poise) could be investigated (notice that most of the MD studies published in the literature often do not exceed 1 ns run intervals).

B. Diffusion coefficients

We first compute the mean-square displacement of a tagged atom of type α in the melt, given by

$$\langle r^2(t) \rangle = \frac{1}{N_\alpha} \sum_{i=1}^{N_\alpha} \langle |\mathbf{r}_i(t) - \mathbf{r}_i(0)|^2 \rangle, \quad (6)$$

and extract from the dependence of $\langle r^2(t) \rangle$ the long time behavior where the dynamics becomes diffusive. Using the Einstein relation $\lim_{t \rightarrow \infty} \langle r^2(t) \rangle / 6t = D$, one can indeed have access to the diffusion constants D_i ($i = \text{Si, O, Na}$) from the mean square displacement. These quantities are plotted for NS2 and MORB in Fig. 1 as a function of inverse temperature. Because of the slowing down of the dynamics at low temperature, the computation of D_i is here restricted to $T > 1500 \text{ K}$ with NS2 and $T > 1173 \text{ K}$ with MORB. For NS2, the diffusion of sodium atoms is found to be remarkably close to the experimental data obtained by Gupta and King (1967) and Negodaev et al. (1972), with a very good agreement somewhere around $10^4/T \simeq 6$. For network forming ions (Si, O) an excellent agreement is found with the experimental data

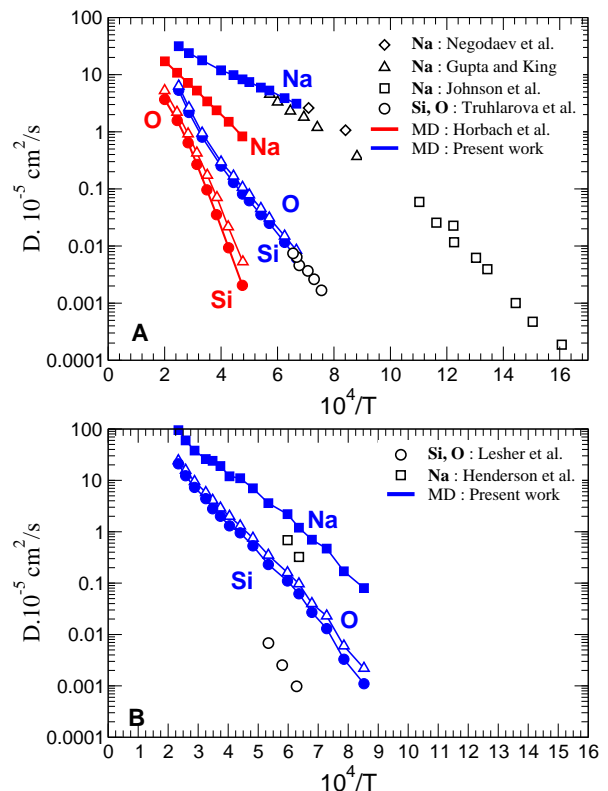


Figure 1: (Color online) A) Computed diffusion constants D_{Na} , D_{Si} and D_O in the NS2 liquid as a function of inverse temperature (blue curves and symbols), compared to experimental data for D_{Na} (Gupta and King, 1967; Negodaev et al. 1972; Johnson et al., 1951) and D_{Si} , D_O (Truhlarova et al., 1970), and to the simulated values of D_{Na} , D_{Si} and D_O using an alternative potential (red curves and symbols, Horbach et al., 2001). B) Computed diffusion constants D_{Na} , D_{Si} and D_O in the MORB liquid as a function of inverse temperature (blue curves and symbols), compared to experimental data for D_{Na} (Henderson et al.) and D_{Si} , D_O (Leshner et al. 1996).

of Truhlarova et al. (1970) who determined the (Si,O) diffusion from a SiO_2 dissolution reaction in a NS2 liquid. In this respect, the Teter potential appears to be very accurate for reproducing the diffusion of elements in the NS2 melt. We remark that the diffusion coefficients display an Arrhenius-like dependence when $10^4/T > 4$ with activation energies equal to 1.18 eV , 1.17 eV and 0.43 eV for Si, O and Na respectively.

To be complete, one should stress that alternative potentials (Kramer et al., 1991) lead to diffusion coefficients for (Na, Si, O) that are found (Horbach et al., 2001) to be at least one order of magnitude lower than the experimental values (for $10^4/T > 5$), and our own results on the MORB liquid as well (see below), whereas the corresponding activation energies also differ by a factor of $\simeq 2$ (Fig. 1). These findings illustrate how difficult the numerical reproduction of diffusion coefficients in silicate melts can be. This well-known feature has been highlighted for the case of silica by Hemmati and Angell (1997) who showed that diffusion is highly model dependent with differences between models increasing up to at least three orders of magnitude when the liquid is cooled

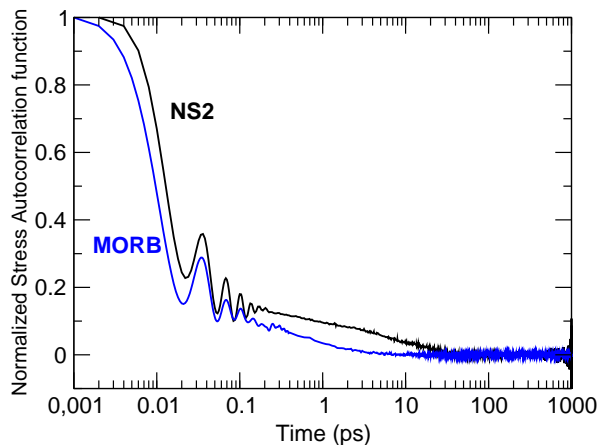


Figure 2: (Color online) Stress auto-correlation function $F(t)$ of a 2000 K liquid NS2 as a function of time for $\rho=2.5 \text{ g/cm}^3$, and a 2273 K MORB liquid at the same density.

down. So, the very good agreement between experimental and simulated ionic diffusivities in the NS2 melt, allows one to be reasonably confident in the ability of the Teter potential to describe accurately other transport properties as the melt viscosity. As for the MORB melt, the temperature dependence of the O, Si and Na diffusion coefficients is shown in panel B of Fig. 1 (among all the network modifying cations in MORB, only the diffusion coefficient of Na is shown because it is the most mobile ion and because it is common with the NS2 melt). Na is found to diffuse more slowly in MORB than in NS2 whereas Si and O atoms are diffusing faster. However, the agreement between simulated and experimental values is poorer with MORB than with NS2 (see Fig. 1 for a comparison). Actually, Na, Si and O atoms diffuse too rapidly in the simulated MORB (by a factor of $\simeq 5$ for Na and $\simeq 50$ for Si and O). So one may anticipate some deviation between calculated and experimental viscosities for the basaltic liquid, and a better agreement for liquid NS2.

C. Viscosity

In Figure 2, we represent the stress auto-correlation function $F(t)$ of NS2 and MORB at around zero pressure, computed following eqs. (1) and (2). As mentioned above, the stress auto-correlation function is indeed found to decay to zero. Typical oscillations which are found at the sub-picosecond timescale are associated with frequencies in the Terahertz range and above [10-300 THz] corresponding to the main band found in the vibrational density of states. This band is attributed to stretching motions of Si-O and Na-O bonds (and other cation-oxygen bonds in MORB). Note that these oscillations are damped as the pressure is increased (not shown). Following eq. (3), the time integration of the stress auto-correlation function leads to the viscosity (Fig. 3). The viscosity of NS2 exhibits an Arrhenius-like behavior over a broad temperature range ($2 < 10^4/T < 6$). The calculated activation energy for viscous flow is about $\simeq 1.33 \text{ eV}$ which is in a

reasonable agreement with Bockris data ($\simeq 1.65 \text{ eV}$) measured (Bockris et al., 1954) in the temperature range (1723-1373 K or $5.8 < 10^4/T < 7.3$). Furthermore, in the temperature range where calculated and experimental values can be compared with each other (i.e. $5.8 < 10^4/T < 6.7$) calculated values are smaller by a factor of $\simeq 2$ than the experimental data of Bockris et al. (1955). This deviation is surprising given the good agreement obtained for the diffusion coefficients (see Figure 1), and given the fact that η and D can be simply related (equ. 5).

In the case of MORB the temperature dependence of the calculated viscosity is found to be non Arrhenian and can be fitted accurately over a large temperature range by the TVF equation with $\eta_\infty = 6.5 \times 10^{-3} \text{ Poise}$, $A = 0.42 \text{ eV}$, and $T_0 = 670 \text{ K}$. Experimentally, the viscosity of basaltic melts is known to be non Arrhenian, so the simulation reproduces this feature, but the simulated MORB is much less viscous than the real one (a factor of 50 at 1673 K, see Fig. 3), this is why A and T_0 values are slightly different from those recommended for basalts by the regression formula of Giordano and Dingwell (2003a,b), and Giordano et al. (2008). In fact the MORB melt simulated at 1273 K corresponds, as far as the viscosity is concerned, to the real melt at about 1673K, this temperature deviation diminishing at higher temperatures where the viscosity of any silicate melt (whatever is its composition) tends to be very low (less than 0.1 Poise above 3000 K). More generally, the agreement between experimental and calculated viscosities for silicate melts is actually difficult to obtain because the viscosity seems to be even more sensitive to the details of the potential than the diffusion coefficients themselves (for a related discussion see Vuilleumier et al., 2009). Moreover, direct comparisons between experimental and simulated values of the viscosity are scarce in the literature (e.g. Lacks et al., 2007; Adjaoud et al., 2008; Karki and Stixrude, 2010b, Spera et al., 2011) and are usually done at very high temperature ($> 2500 \text{ K}$) where the viscosity is very low and its experimental value badly known or obtained from uncontrolled high-temperature extrapolations.

In the TVF equation, η_∞ represents the high temperature limit to silicate melt viscosity. By analyzing measured viscosity curves for a great number of silicate liquids, it has been shown that all silicate melts converge to a common value of viscosity at very high-T, about $10^{-2} - 10^{-3} \text{ Poise}$ (Russell et al., 2003; Giordano et al., 2008, Zheng et al., 2011). But it is difficult to test this conjecture because of a lack of viscosity data for silicate liquids at super-liquidus temperatures (i.e. for $T \geq 2000 \text{ K}$). In contrast, the simulation can shed some light on this topic because the high-T range is easily accessible in a numerical experiment. However it is worthwhile to clarify what means the concept of a high-temperature limit for a silicate liquid. When a silicate melt is heated isobarically (e.g. under atmospheric pressure) it vaporizes incongruently in forming a gaseous phase which is a complex mixture of atoms and molecules (e.g. the major vapor species above liquid silica are SiO, SiO₂, O₂ and O, and about thirty species compose the vapor phase above a basaltic lava, for a review see Schaefer and Fegley, 2004). Nevertheless this is not a real problem as long as the resulting vapor pressure remains

low, i.e. the temperature is not too high (e.g. the vapor pressure above basaltic lavas is 10^{-5} - 10^{-4} bar at 1900 K). This situation changes drastically at higher temperature where the vapor pressure becomes high (e.g. $\approx 10^{-2}$ bar at 2500K above for a tholeiitic liquid). Then the vaporized fraction becomes rapidly non-negligible (10% or more) and the composition of the residual melt deviates significantly from the original one. To avoid this problem, one only has to prevent vapor formation in applying on the liquid an isostatic pressure larger than the saturating vapor pressure. A convenient thermodynamic path consists to follow (or to be as close as possible) the liquid branch of the liquid-vapor coexistence curve up to the critical point. The critical point parameters for silicates have never been measured because of the very high temperatures involved (much beyond 5000 K, estimations for SiO_2 are given in Guissani and Guillot (1994) and Melosh (2007)). By imposing the pressure, we have been able to evaluate the viscosity of our simulated MORB along (or close by) the liquid branch of the liquid-vapor coexistence curve. However due to the density fluctuations generated by the MD calculation it becomes more and more difficult to preserve the cohesion of the liquid phase in rising the temperature because the liquid then tends to transform spontaneously into the corresponding vapor phase. So the highest temperature reached in keeping the cohesion of the liquid phase around 1 bar was 4673K, a temperature at which the density is equal to 1.47 g/cm^3 and the viscosity is evaluated to $10^{-2.8}$ Poise. This latter value matches rather well the estimated range for η_∞ (10^{-2} - 10^{-3} Poise, see above). It is certainly possible to pursue the calculation at higher temperature up to the critical point, but it is a tedious task to locate accurately the critical point of our model and we leave that to a future work. In using the same procedure with liquid NS2 we have reached 4500K, a temperature at which the liquid density is as low as 1.66 g/cm^3 and its viscosity $10^{-2.5}$ Poise. We anticipate that the common value of η_∞ for MORB and NS2 at the critical point could be about 10^{-3} Poise or slightly less. Notice that in approaching the critical point, the structure of a silicate liquid is quite different of the structure from the melt near the liquidus. The near critical liquid is indeed fully depolymerized and is composed of molecular clusters involving various species (oxides). So it is expected that all silicate liquids will exhibit similar flow behavior in the critical region, that of a regular molecular liquid.

We now follow both viscosity and diffusion with pressure in our two melts (NS2 and MORB). In Fig. 4 and 5, we plot the behavior of the diffusion constants with density and pressure. The most mobile atom, Na, is found to display the same behavior in the two melts: its diffusion coefficient is continuously decreasing with the pressure. In the case of MORB the other network modifying cations (Ca, K, Mg,...) show the same behavior with the pressure as Na does (Fig. 5).

The behavior of network forming ions (Si,O) is quite different as their diffusion coefficients go through a maximum value with the pressure. Furthermore this maximum is located at about 15 GPa in NS2 and about 50 GPa in MORB and it is much more pronounced in the NS2 melt than in the basaltic composition. Notice that a diffusivity maximum for network forming ions is also observed with silica (Shell et al.

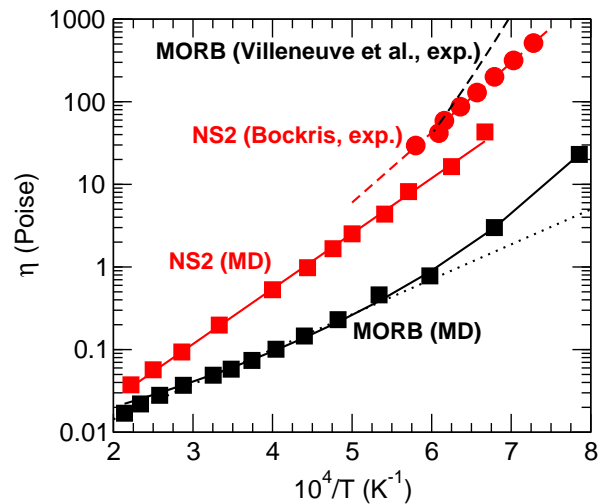


Figure 3: (Color online) Simulated viscosity of the NS2 liquid at zero pressure (filled red squares), compared to experimental data (red circles) from Bockris et al. (1955), together with simulated viscosity of the MORB liquid at zero pressure (filled black squares), compared to experimental data (broken black curve) from Villeneuve et al. (2008). The dotted line is a high temperature Arrhenius fit for the MORB data whereas the solid line is a TVF fit (see text for parameters).

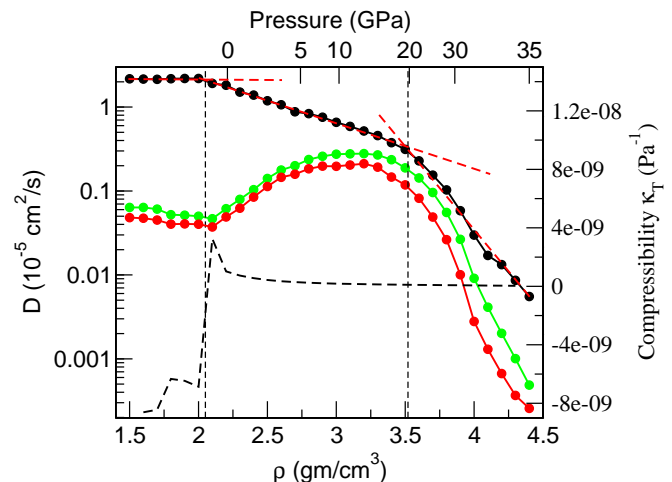


Figure 4: (Color online) Silicon (red), Oxygen (green), and sodium (black) diffusion constants of a NS2 liquid at $T=2000 \text{ K}$ as a function of system density (bottom axis) and pressure (top axis). Right axis: Isothermal compressibility of the liquid computed from the equation of state at 2000 K.

2002), germania (Dreyfus and Micoulaut, 2012), some sodo-aluminosilicates (Poe et al., 1997) and in water (Errington and Debenedetti, 2001).

Is such an anomaly also visible in the evolution of viscosity with pressure? Actually, for NS2 we do find that η displays a minimum of viscosity but in a pressure range 4-10 GPa which does not coincide with the diffusivity maximum for Si and O ($P_{max}=15 \text{ GPa}$). For MORB, the viscosity shows no minimum, it is nearly constant up to 5 GPa and increases progres-

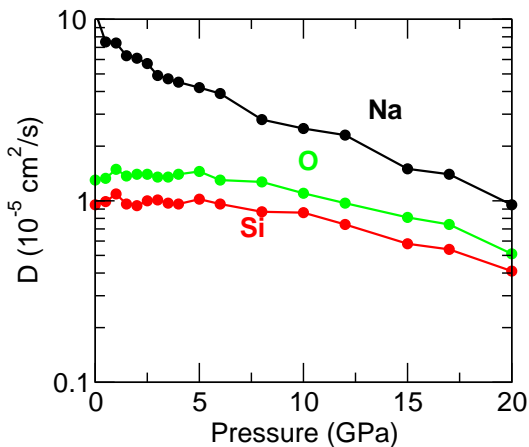


Figure 5: (Color online) Silicon (red), Oxygen (green), and sodium (black) diffusion constants of a MORB liquid at $T=2273$ K as a function of pressure.

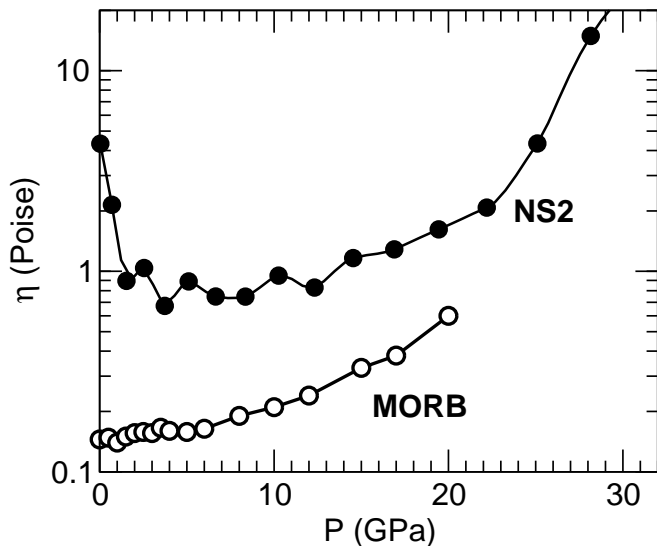


Figure 6: (Color online) Simulated viscosity of a NS2 liquid at $T=2000$ K (filled circles) and a MORB liquid at $T=2273$ K (open circles) as a function of pressure.

sively at a higher pressure. These simple findings suggest that the diffusivities of network forming ions are not the only ones responsible of the viscous flow, network modifying cations play also a role.

III. DISCUSSION

As briefly recalled in the introduction, the pressure dependence of the viscosity has been reported experimentally for a number of silicates (Scarfe, 1973; Kushiro, 1976, 1978; 1986; Kushiro et al., 1976; Brearley et al., 1986; Dunn and Scarfe, 1986; Mori et al., 2000; Suzuki et al., 2002, 2005, 2011; Reid et al., 2003; Tinker et al., 2004; Liebske et al., 2005; Ardia et al., 2008). The analysis

of these data along the sequence of composition albite \rightarrow jadeite \rightarrow rhyolite \rightarrow andesite \rightarrow basalts \rightarrow albite $_x$ -diopside $_{1-x}$ \rightarrow jadeite $_x$ -diopside $_{1-x}$ \rightarrow diopside \rightarrow peridotite, which covers a large NBO/T range (from 0 to 2.8), leads to a contrasted picture. In the initial pressure range (0-2 GPa), the slope $(d\eta/dP)_T$ is negative for composition with $NBO/T \leq 1.2$ and is positive for higher NBO/T value. Although the NBO/T ratio is a good indicator of melt polymerization, its use for predicting the pressure evolution of viscosity requires some caution (e.g. Toplis and Dingwell, 2004). For instance, albite and jadeite melts are both considered as fully polymerized ($NBO/T=0$) but the pressure behavior of their viscosity is different (a viscosity curve presenting a weak minimum located about 2-3 GPa for jadeite as compared with a continuous decrease of the viscosity over several decades up to 7 GPa for albite, see Suzuki et al. 2002, 2011). In keeping in mind this information, and according to the above data analysis, the viscosity of NS2 and MORB composition ($NBO/T=1$ and 0.8) should exhibit a negative slope. For instance, Scarfe et al. (1987) notice that the viscosity of the NS2 melt is decreasing between 0 and 2 GPa. In the same way, the viscosity of oceanic basalts (Kushiro et al., 1976; Kushiro, 1986; Ando, 2003) maintained at fixed temperature decreases slightly with increasing pressure up to 3 GPa where it reaches a minimum value prior increase upon further compression. But as an increase of the temperature tends to decrease the viscosity of a melt maintained at a fixed pressure, the weak minimum of viscosity in basalts is expected to disappear in increasing the temperature. This is why a viscosity minimum is barely visible with our MORB melt simulated at 2273K, especially as the latter one describes the viscous flow of a real MORB at a higher temperature, may be as high as 2600-2700 K (see Fig. 3). In contrast the viscosity of the simulated NS2 melt at 2000 K presents a clear minimum as a function of pressure (notice that the temperature dependence of the viscosity of the NS2 melt is much better reproduced by the simulation than in the MORB case, see Fig. 3).

Since the first report of an anomalous pressure dependence of the viscosity ($(d\eta/dP)_T < 0$) by Kushiro (1976) and Kushiro et al. (1976), different authors have tried to explain the origin of this phenomenon. Using the Adam-Gibbs theory and a pressure dependence for the degree of melt polymerization, Bottinga and Richet (1995) have shown that the decrease of the specific volume with alkali content was leading to an increased sensitivity of the viscosity with pressure change. Gupta (1987) has proposed that a system having a thermal expansion coefficient in a glass larger than that of a liquid could display such anomalies. However, this does not seem to be verified experimentally (Knoche et al., 1994). A relationship with structural changes under pressure also has been proposed, in particular a pressure-induced coordination change of Si and Al or Si-O and Al-O bond weakening due to pressure-induced distortion of the liquid structure (Waff, 1975; Mysen et al., 1980). However, a study (Sharma et al., 1979) on dense liquid GeO_2 where both coordination change (Micoulaut et al. 2006) and a pressure induced viscosity anomaly occur could not establish the correlation. This does not rule out the possibility of a structural origin for the anomaly. For instance,

Suzuki et al. (2002) do find a correlation between the gradual decrease of the viscosity of albite with pressure up to 7 GPa and the increasing concentration of 5-coordinated Al.

The variation of η along an isotherm also suggests that the corresponding activation energy for viscous flow $E_A(P,T)$ is minimum. Here, for selected pressures in the NS2 system, we have computed η with temperature and find that the activation for viscous flow should minimize indeed in the pressure window, i.e. we obtain $E_A=1.33$, 1.09 and 1.34 eV for $P=0$, 6, and 22 GPa, respectively. The link between E_A minima and the presence of a stress-free state in corresponding low-temperature glassy networks has been established recently (Micoulaut, 2010), indicative of a flexible to rigid transition (Micoulaut and Phillips, 2003). Since it is known that at ambient pressure the NS2 is flexible (Vaills et al., 2005), one may obtain a pressure-induced flexible to rigid transition with increasing P (Trachenko et al. 2004), the minimum in E_A (and η) being one of the expected salient features.

In summary, all these studies point out the subtle interplay between structure, dynamics and thermodynamics of the silicate melt that leads to anomalous behavior in transport properties.

A. Viscosity versus diffusion

The connection between diffusion and viscosity can be realized in a simple way *via* the Eyring relationship given by eq. (5) involving λ which is a typical jump distance for the diffusing atom. According to Eyring, the relationship (5) holds (i.e. λ is constant and equal to the average interatomic distance) if the activated process for diffusion can be assumed identical with that of viscous flow. So for silicate melts the network forming ions (Si and O) are good candidates to fulfill this prerequisite. In fact the Eyring relationship has been tested over a large range of melt composition, from simple binary oxides to natural magma compositions (Oishi et al., 1975; Yinnon and Cooper, 1980; Dunn, 1982; Shimizu and Kushiro, 1984; Dunn and Scarfe, 1986; Leshner et al., 1996; Reid et al., 2003; Tinker et al., 2004). In polymerized melts of high viscosity (e.g. jadeite), it is observed that the diffusivity of oxygen ions and the melt viscosity are related to each other through the Eyring relation in introducing for the jump distance, λ , the average oxygen-oxygen distance in the melt ($\simeq 2.8\text{\AA}$). In depolymerized melts where the viscosity is generally lower (e.g. basalts and diopside), the Eyring relation is fulfilled with λ larger than 2-3 times the mean oxygen-oxygen distance. However even in polymerized melts, the Eyring relation fails to fully reproduce the correlated evolution of viscosity and oxygen self-diffusion coefficient. As a matter of fact it has been reported that oxygen self-diffusion coefficient in albite (Poe et al., 1997) and in dacite melts (Tinker and Leshner, 2001) reaches a maximum value at about 5 GPa whereas the viscosity of the corresponding liquids is continuously decreasing with the pressure and shows no viscosity minimum at 5 GPa (Suzuki et al., 2002; Tinker et al., 2004). In this context, we have evaluated the length, $\lambda = k_B T / \eta D_{O,Si}$ along two thermodynamic paths : the isobar $P=0$ (with varying temperature) and the isotherm

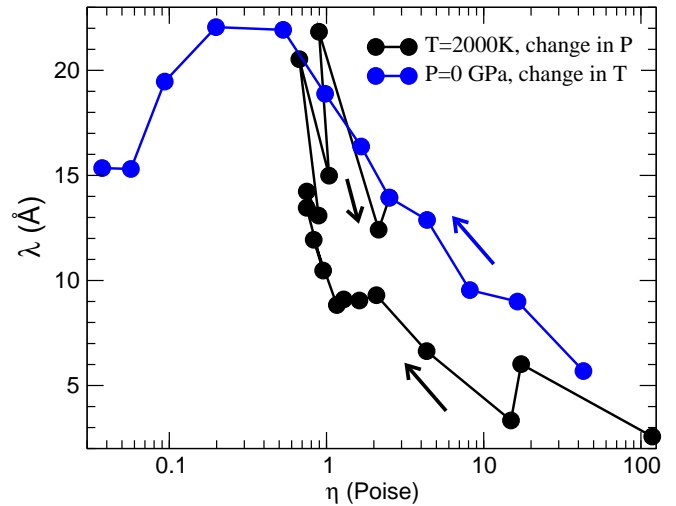


Figure 7: (Color online) Typical lengthscale λ associated with the Eyring relation (5) as a function of the melt viscosity of a NS2 liquid, computed either from the pressure variation (at 2000 K, black symbols) or from the temperature variation (at $P=0$, blue symbols).

$T=2000\text{K}$ for NS2 (with varying pressure). For convenience this length is represented in Fig. 7 as function of the calculated melt viscosity. Along each path (isobar or isotherm) the arrow indicates the direction of the increasing thermodynamic parameter (T or P). Notice that in the representation $\lambda(\eta)$ (Fig. 7), both curves exhibit a maximum value (22\AA) for both the isotherm and the isobar which expresses a non-trivial behavior of η with diffusivity. Clearly, for the two melt compositions and whatever the thermodynamic path, λ decreases when the melt viscosity increases. A simple extrapolation suggests that the Eyring relation should be verified only when the viscosity is sufficiently high (for $\eta > 100$ Poise), i.e. when λ becomes of the order of $\simeq 5\text{\AA}$. This conclusion is in agreement with the viscosity data discussed above. On the other hand, when the viscosity is becoming very low and the diffusion coefficients of network forming ions high ($> 10^{-9} \text{ m}^2/\text{s}$), the length λ matches better the values predicted by the Stokes-Einstein equation, $\lambda = 2\pi d$, where d is the diameter of the diffusing molecule ($\simeq 3\text{\AA}$ for oxygen). As the Stokes-Einstein relation works well with molecular liquids (Li and Chang, 1955) it is not too surprising that it also leads to reasonable values for silicate liquids at very high temperature (e.g. in approaching the critical point) where the melt is essentially depolymerized and shares some structural similarities with regular liquids. In summary, the Eyring relation is not adapted to the description of the transport properties of silicate melts at superliquidus temperatures. Alternative models have been proposed in the literature (see Mungall, 2002) but a quantitative theory is still lacking.

B. Structural correlations

As mentioned before, there have been many attempts to correlate structural features with the viscosity anomalies in sili-

cate liquids (Waff, 1975; Woodcock and Angell, 1976; Mysen et al., 1980, Suzuki et al., 2002). From the liquid structures obtained for the two melt compositions (NS2 and MORB), we have computed the fraction of silicon atoms that are 4-, 5- and 6-fold coordinated. Results are displayed in Fig. 8a. Here one sees that the melt structure evolves from roughly 100% 4-coordinated Si^{IV} to a growing proportion of Si^{V} and Si^{VI} , Si^{V} increasing substantially for P larger than 10 GPa and going through a maximum found at about 25 GPa in NS2 (and above this pressure for MORB) whereas Si^{VI} is becoming significant only above 15GPa.

From the probability distribution $\{p_i\}$ of Si^i species ($i=\text{IV},\text{V},\text{VI}$), one can compute a configurational entropy according to:

$$S_c = - \sum_i p_i \ln p_i, \quad (7)$$

which maximizes when the population of Si^{V} is maximum (≈ 30 GPa). This configurational entropy is represented in Fig. 8b as $\exp[1/S_c]$. In fact, if one assumes that the Adam-Gibbs relation for viscosity of the form: $\eta = \eta_0 \exp[A/TS_c]$ is valid, one may expect from a simple inspection of the relationship that a minimum in η is correlated with a maximum in S_c , as also suggested by Bottinga and Richet (1995). However, for NS2 a quick look at figure 8b clearly shows that $\eta(P)$ and $\exp[1/S_c]$ are not correlated as the location of the maximum in S_c does not coincide with the pressure range where a viscosity minimum is observed. In the case of MORB, the gradual increase of the viscosity with pressure could be correlated with that of S_c . So it is hard to firmly conclude that a structural reorganization through coordination changes of Si is directly responsible of the pressure evolution of the viscosity. To be complete, notice that Goel et al. (2011) have recently shown by MD simulations that the diffusion coefficient of Si atoms in silicate melts along the MgO-SiO_2 join, correlates well with the excess entropy when the latter one is evaluated from the knowledge of the pair distribution functions. But it is unclear if this correlation also holds with the viscosity as the relationship linking diffusivity and viscosity is far to be obvious (see the above discussion).

We have therefore calculated an excess entropy s_2 in using the expression of the two-body term (Baranyai and Evans, 1989), which writes:

$$s_2 = - \frac{k_B P}{2} \sum_i \sum_j x_i x_j \int \left[g_{ij} \ln g_{ij} - (g_{ij} - 1) \right] d\mathbf{r} \quad (8)$$

ρ being the density, and x_i the concentration of species i . Results of this calculation are shown in Fig. 8b (right axis). s_2 is found to decrease continuously with pressure and a corresponding Adam-Gibbs η does not show a viscosity minimum. This behavior is at variance with that obtained by Goel et al. (2011) in their MD simulation study of MgO-2SiO_2 (a system related to NS2) where S_2 is exhibiting an entropy maximum around 10 GPa, very well correlated with a diffusivity maximum, as also found by Jabes et al. (2010) for liquid SiO_2 , GeO_2 , BeFe_2 and H_2O . So our search for an eventual relationship between viscosity and configurational entropy at the single temperature 2000 K is inconclusive and certainly deserves

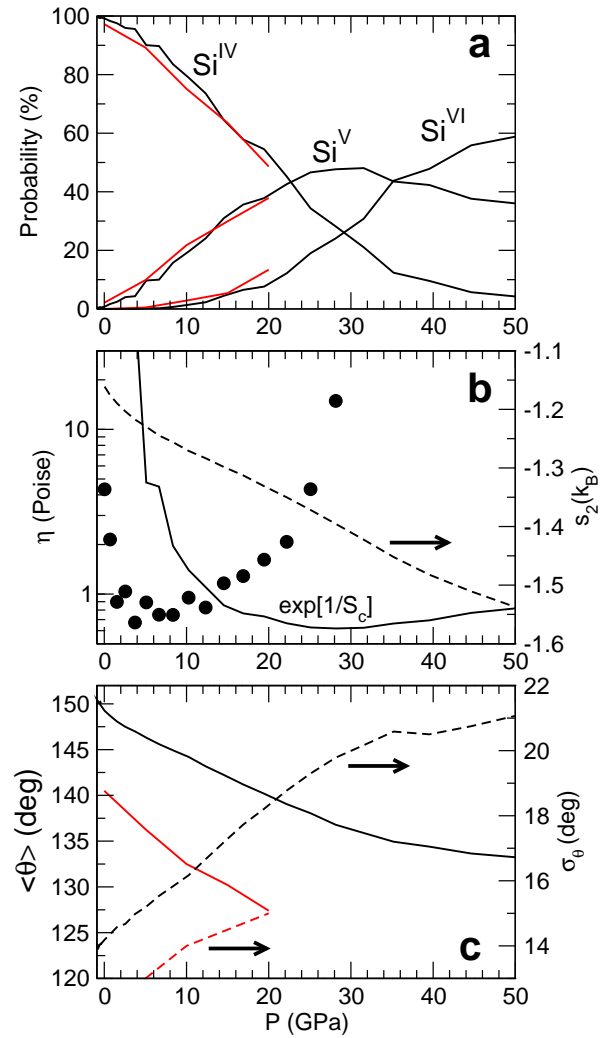


Figure 8: (Color online) a) Fraction of 4-, 5- and 6-fold silicon atoms as a function of pressure in the NS2(black curves) and MORB liquid (red curves). b) Simulated viscosity of the NS2 liquid at $T=2000$ K (filled black circles, same as Fig. 3), compared to an Adam-Gibbs viscosity computed from a structure-related configurational entropy S_c . Right axis: Entropy s_2 (broken line) computed from equ. (8). c) Mean angle around the bridging oxygen (BO) atom and corresponding second moment (standard deviation) of the bond angle distribution (right axis).

a further scrutiny. An alternative way to understand the trends of the viscosity with pressure may arise from the evolution of the T-O-T intertetrahedral bond angle distribution (BAD) as it is well known that bond angles are much more pressure sensitive than bonds themselves (Micoulaut, 2004). Figure 8c shows the evolution of the average value of the BAD between a bridging oxygen (BO) and its two $\text{SiO}_{4/2}$ tetrahedra, together with the second moment (standard deviation) of the BAD. The latter one quantifies the angular excursion around a mean value and it is expected to be pressure sensitive, as highlighted in the case of densified GeSe_2 (Bauchy et al., 2011). When the average value of the BAD decreases steadily in NS2 melt from 150° to 140° between $P=0$ and 20 GPa, it varies be-

tween 140° and 128° in MORB over the same pressure range. In the same way the angular excursion increases (with pressure) equally well in the NS2 and in MORB melt as shown by the standard deviation σ_θ evolution with pressure. So, here again, it is not clear that viscosity and diffusion anomalies (e.g. in NS2) induced by the pressure can be univoquely associated with a particular structural rearrangement even if there is no doubt that structural changes are taking place in the silicate melt under investigation.

IV. SUMMARY AND CONCLUSION

In summary, we have used Molecular Dynamics simulations to study the dynamics of two systems of importance in materials science and geology : the sodium disilicate (NS2) and a basaltic (MORB) liquid. Results show that the diffusion constant computed from a two-body Born-Majer type potential at ambient conditions exhibits a remarkable agreement with experimental data for all species (Na, Si, O) in the NS2 liquid. This contrasts with the level of agreement obtained for the MORB system which shows a deviation by at least one order of magnitude when compared to experimental findings. The same situation is nearly reproduced in the comparison of calculated viscosity using the Green-Kubo formalism (based on the stress auto-correlation function) with experimental data from Bockris et al; (1955) for NS2, and Villeneuve et al. (2008) for MORB.

We have then studied the behavior of both the diffusion constant and the viscosity with changing pressure in the two liquids with temperature close to 2000 K. In the NS2 system, a diffusivity maximum for the network forming species (Si,O) is obtained at around 15 GPa, a result which parallels similar findings for other densified tetrahedral liquids such as water, germania, or silica. The sodium cation is found to display three distinctive régimes for diffusion, the one corresponding to lower densities (negative pressure) being identified with a stretched melt (Bauchy and Micoulaut, 2011). These features are not found in the more depolymerized MORB liquid which shows for Si and O diffusion a steady behavior between 0 and 5 GPa, followed by a continuous decrease applied pressure. Interestingly, a pressure window is found in the NS2 liquid with a minimum at around 5 GPa that does not seem to be correlated with the maximum in the obtained diffusivity. Again, this contrasts with the steadily increase of the MORB liquid viscosity with pressure.

Having in hand both the computed diffusion and the viscosity, we have investigated the validity of the Eyring equation which relates both quantities and involves also a jump distance λ usually of the order of the average oxygen-oxygen bond distance (2.8 Å), as exemplified by numerous experimental studies. This investigation has been performed along two thermodynamic paths: at fixed pressure ($P=0$) and changing temperature, and at fixed temperature ($T \simeq 2000$ K) and changing pressure. We have shown that λ calculated from the simulated diffusion and viscosity was indeed of the order of a few Angstroms, but only in the high viscosity régime (here 100 Poise). It underscores the fact that the Eyring relationship

should hold only for deeply supercooled liquids as it fails for liquidus temperatures.

Finally, we have attempted to relate the obtained anomalies in viscosity with structural changes of the melt. With growing pressure, the population of higher coordinated silicon (Si^V , Si^{VI}) increases in a similar fashion in the NS2 and MORB liquid which rules out the possibility of a direct relationship between e.g. coordination increase and viscosity minimum. Moreover, in the NS2 liquid configurational entropies have been calculated and their behavior with pressure does not follow at all the trend obtained for the viscosity. More subtle structural and thermodynamic changes are clearly at play and one does not recover for NS2 the reported correlation between configurational entropy and diffusivity maxima found by Goel et al. (2011) in the MgO-SiO₂ system.

Our attempts to find out a quantitative link between pressure-induced structural rearrangement and viscosity anomalies is rather deceptive. Although some correlations between diffusivity, viscosity and excess entropy certainly do exist and are sometimes emphasized in the literature, their effectiveness depends strongly on the melt composition, a fact which makes risky a clear conclusion. On the other hand, a recent theoretical analysis by Schmelzer et al. (2005) seems to be promising. In this study the pressure dependence of the viscosity is analyzed from a thermodynamical point of view. The working equation expresses the derivative of the viscosity with respect to the pressure under the following form,

$$\left(\frac{d\eta}{dP}\right)_T = -\frac{\kappa_T}{\alpha_T} \left(\frac{\partial\eta}{\partial T}\right)_P + \left(\frac{\partial\eta}{\partial\xi}\right)_T \left(\frac{d\xi}{dP}\right)_T, \quad (9)$$

where ξ is an order parameter (e.g. the degree of polymerization given by $\text{BO}/(\text{BO}+\text{NBO})$ where BO and NBO are the numbers of bridging and nonbridging oxygen, respectively), κ_T is the compressibility and α_T the thermal expansion coefficient. If the order parameter is invariant with pressure (so $d\xi/dP=0$) then $d\eta/dP$ is governed by the first term in eq. (9) which expresses a free volume effect (η only varies with the total volume of the melt). But as κ_T is negative in a liquid at equilibrium, and $\partial\eta/\partial T$ is positive (the viscosity decreases when the temperature increases), the variation of η with P will be positive or negative according to the sign of the thermal expansion coefficient, α_T . If the latter one is negative then the viscosity will tend to decrease in increasing pressure and if α_T becomes positive after a further compression then the viscosity will go to a minimum value before to increase. As shown by Schmelzer et al. (2005) this behavior is encountered with the viscosity of liquid water. However the first term in eq. (9) is not sufficient to reproduce all the magnitude of the viscosity minimum and the contribution of structural changes induced by the pressure has to be accounted for (via the second term in eq. (9)). In the case of silicate melts it is well documented that the viscosity increases when the degree of polymerization of the melt increases (so $d\eta/d\xi > 0$) whereas for a given melt its degree of polymerization decreases when pressure increases (so $d\xi/dP < 0$). Therefore the second term of eq. (9) is generally negative. For NS2 and MORB we have checked that α_T is positive at liquid temperature and over a large pressure range which implies that the first term in eq. (9) is positive for

these two compositions. As our MD results for NS2 lead to a decrease of the viscosity between 0 and $\simeq 4$ GPa, this suggests that the second term in eq. (9) overbalances the first term. For MORB the viscosity is found virtually constant in the 0-4 GPa range so the two terms nearly compensate each other in eq. (9). At high pressures (e.g. above 10 or 20 GPa) the two melts are more and more depolymerized and $d\xi/dP$ becomes small because the degree of depolymerization does not evolve very much with the pressure due to melt densification. So the free volume effect (first term) is the dominant contribution to eq. (9) at high compression rates and the viscosity of the two melts increases steadily in the high pressure range. In summary it appears that eq. (9) is very useful to decipher the complex behavior exhibited by the viscosity of silicate melts as function of pressure. To be more quantitative and predictive it remains to make the link between the structural evolution of the melt and the variation of the order parameter with the pressure ($\xi(P)$). This will be done in a future publication.

Acknowledgments

The authors thank G. Henderson, D.R. Neuville, P. Richet for useful discussions.

Adjaoud O., Steinle-Neumann, Jahn S. (2008). Mg₂SiO₄ liquid under high pressure from molecular dynamics. *Chem. Geol.* 256, 185-192.

Adjaoud O., Steinle-Neumann, Jahn S. (2011). Transport properties of Mg₂SiO₄ liquid at high pressure: Physical state of a magma ocean. *Earth and Planet. Sci. Lett.* 312, 463-470.

Abramo M. C., Caccamo C., Pizzimenti G. (1992). Structural properties and medium-range order in metasilicate (CaSiO₃) glass: A molecular dynamics study. *J. Chem. Phys.* 96, 9083.

Alejandre J., Tildesley D., Chapela G. A. (1995). Molecular Dynamics simulation of the orthobaric densities and surface tension of water. *J. Chem. Phys.* 102, 4574.

Allen M. P., Tildesley D. J. (1987). *Computer Simulations of Liquids*, Oxford Univ. Press, p. 64.

Allen M. P., Brown D., Masters A. J. (1994). Use of the McQuarrie equation for the computation of shear viscosity via equilibrium molecular dynamics - comment. *Phys. Rev. E* 49, 2488.

Ando R., Ohtani E., Suzuki A., Rubie D.C., Funakoshi K. (2003). Pressure dependency of viscosities of MORB melts. AGU Fall Meeting 2003, abstract V31D-0958.

Angell C.A. (1995). Formation of Glasses from Liquids and Biopolymers. *Science* 267, 1924.

Ardia P., Giordano D., Schmidt M.W. (2008). A model for the viscosity of rhyolite as a function of H₂O-content and pressure: A calibration based on centrifuge piston cylinder experiments. *Geochim. Cosmochim. Acta* 72, 6103-6123.

Barrat J.-L., Badro J., Gillet P. (1997). Strong to Fragile transition in a model of liquid silica. *Mol. Simul.* 20, 17-25.

Bauchy M., Micoulaut M. (2011). From pockets to channels: density controlled diffusion in silicates. *Phys. Rev. B* 83, 184118.

Bauchy M., Micoulaut M., Celino M., Boero M., Le Roux S., Massobrio C. (2011). Angular rigidity in tetrahedral network glasses with changing composition. *Phys. Rev. B* 83, 054201.

Behrens H., Schulze F. (2003). Pressure dependence of melt viscosity in the system NaAlSi₃O₈-CaMgSi₂O₆. *Am. Mineral.* 88, 1351.

Bockris J.O'M., Mackenzie J.D., Kitchener J.A. (1955). Viscous flow in silica and binary liquid silicates. *Trans. Faraday Soc.* 51, 1734-1748.

Boon J. P., Yip S. (1980). *Molecular Hydrodynamics*. McGraw Hill.

Borodin O., Smith G. B., Kim H. (2009). Viscosity of a Room Temperature Ionic Liquid: Predictions from Nonequilibrium and Equilibrium Molecular Dynamics Simulations. *J. Phys. Chem. B* 113, 4771.

Bottinga Y., Richet P. (1995). Silicate melts: The "anomalous" pressure dependence of the viscosity. *Geochim. Cosmochim. Acta* 59, 2725-2731.

Brearley M., Dickinson Jr. J.E., Scarfe C.M. (1986). Pressure dependence of melt viscosities on the join diopside-albite. *Geochim. Cosmochim. Acta* 50, 2563-2570.

Cherne F. J., Deymier P. A. (1998). Calculation of Viscosity of Liquid Nickel by Molecular Dynamics Methods. *Scripta Mater* 39, 1613.

Cormack A. N., Du J., Zeitler T. R. (2003). Sodium ion migration mechanisms in silicate glasses probed by molecular dynamics simulations. *J. Non-Cryst. Solids* 323, 147.

Del Gaudio P., Behrens H. (2009). An experimental study on the pressure dependence of viscosity in silicate melts. *J. Chem. Phys.* 131, 044504-1-14.

Dingwell D.B., Webb S.L. (1989). Structural relaxation in silicate melts and non-newtonian melt rheology in geologic processes. *Phys. Chem. Minerals* 16, 508-516.

Dreyfus C., Micoulaut M. (2012), unpublished

Du J., Cormack A. N. (2004.) The medium range structure of sodium silicate glasses: a molecular dynamics simulation. *J. Non-Cryst. Solids* 349, 66.

Du J., Cormack A. N. (2005). Molecular Dynamics Simulation of the Structure and Hydroxylation of Silica Glass Surfaces. *J. Am. Ceram. Soc.* 88, 2532.

Du J., Corrales L. R. (2006). Compositional dependence of the first sharp diffraction peaks in alkali silicate glasses: A molecular dynamics study. *J. Non-Cryst. Solids*, 352, 3255.

Dunn T. (1982). Oxygen diffusion in three silicate melts along the join diopside-anorthite. *Geochim. Cosmochim. Acta* 46, 2293-2299.

Dunn T., Scarfe C.M. (1986). Variation of the chemical diffusivity of oxygen and viscosity of an andesite melt with pressure at constant temperature. *Chem. Geol.* 54, 203-215.

Errington J. R., Debenedetti P. G. (2001). Relationship Between Structural Order and the Anomalies of Liquid Water. *Nature* 410, 259.

Fernandez G. A., Vrabec J., Hasse H. (2004). A Molecular Simulation Study of Shear and Bulk Viscosity and Thermal

- Conductivity of Simple Real Fluids. *Fluid Phys. Equ.* 221, 157.
- Giordano D., Dingwell D.B. (2003a). The kinetic fragility of natural silicate melts. *J. Phys. Condens. Matter* 15, S945-S954.
- Giordano D., Dingwell D.B. (2003b). Non-Arrhenian multicomponent melt viscosity: a model. *Earth Planet. Sci. Letters* 208, 337-349.
- Giordano D., Russell J.K., Dingwell D.B. (2008). Viscosity of Magmatic Liquids: A Model. *Earth Sci. Planet. Sci. Lett.* 271, 123-134.
- Goel G., Lacks D.J., Van Orman J.A. (2011). Transport coefficients in silicate melts from structural data via a structure-thermodynamics-dynamics relationship; *Phys. Rev. E* 84, 051506-1-5.
- Ghosh D.B., Karki B.B. (2011). Diffusion and viscosity of Mg₂SiO₄ liquid at high pressure from first-principles simulations. *Geochim. Cosmochim. Acta* 75, 4591-4600.
- Green M. S. (1954). Markoff random process and the statistical mechanics of time-dependent phenomena 2: irreversible processes in fluids. *J. Chem. Phys.* 22, 398.
- Guillot B., Sator N. (2007a). A computer simulation study of natural silicate melts. Part I: Low pressure properties. *Geochim. Cosmochim. Acta* 71, 1249-1265.
- Guillot B., Sator N. (2007b). A computer simulation study of natural silicate melts. Part II: High pressure properties. *Geochim. Cosmochim. Acta* 71, 4538-4556.
- Guisani Y., Guillot B. (1994). A numerical investigation of the liquid-vapor coexistence curve of silica. *J. Chem. Phys.* 104, 7633-7644.
- Gupta Y. P., King T. B. (1967). Self-diffusion of sodium in sodium silicate liquids. *Trans. Metall. Soc. AIME* 239, 1701.
- Gupta P. K. (1987). Negative pressure dependence of viscosity. *J. Am. Ceram. Soc.* 70, C152.
- Hemmati M., Angell C.A. (1997) IR absorption of silicate glasses studied by ion dynamics computer simulation. I. IR spectra of SiO₂ glass in the rigid ion model approximation. *J. Non-Cryst. Solids*, 217 236.
- Henderson P., Nolan J., Cunningham G.C., Lowry R.K. (1985). Structural controls and mechanisms of diffusion in natural silicate melts. *Contrib. Mineral. Petrol.* 89, 263-272.
- Horbach J., Kob W. (1999). Static and dynamic properties of a viscous silica melt. *Phys. Rev. B* 60, 3169-3181.
- Horbach J., Kob W., Binder K. (2001) Structural and dynamical properties of sodium silicate melts: An investigation by molecular dynamics computer simulation. *Chem Geol.* 174, 87-101.
- Ispas S., Benoit M., Jund P., Jullien R. (2002). Structural properties of glassy and liquid sodium tetrasilicate: comparison between ab initio and classical molecular dynamics simulations. *J. Non-Cryst. Solids*, 307, 946.
- Jabes Shadrack B., Agarwal M., Chakravarty C. (2010). Tetrahedral order, pair correlation entropy, and waterlike liquid state anomalies: Comparison of GeO₂ with BeF₂, SiO₂, and H₂O. *J. Chem. Phys.* 132, 234507.
- Johnson J. R., Bristow R. H., Blau H. H. (1951). Diffusion of Ions in Some Simple Glasses. *J. Am. Ceram. Soc.* 34, 165.
- Karki B.B., Stixrude L. (2010). First-principles study of enhancement of transport properties of silica melt by water. *Phys. Rev. Lett.* 104, 215901-1-4.
- Karki B.B., Stixrude L. (2010). Viscosity of MgSiO₃ liquid at Earth's mantle conditions: Implications for an early magma ocean. *Science* 328, 740-742.
- Karki B.B., Bohara B., Stixrude L. (2011). First-principle study of diffusion and viscosity of anorthite (CaAl₂Si₂O₈) liquid at high pressure. *Am. Mineral.* 96, 744-751.
- Knoche R., Dingwell D. B., Seifert S. A., Webb S. L. (1994). Non-linear properties of supercooled liquids in the system Na₂O-SiO₂. *Chem. Geol.* 116, 1.
- Kramer G. J., de Man A. J. M., van Santen R. A. (1991). Zeolites versus aluminosilicate clusters: the validity of a local description. *J. Am. Chem. Soc.* 113, 6435.
- Kubo R. (1957). Statistical-mechanical theory of irreversible processes 1: General theory and simple applications to magnetic and conduction problems. *J. Phys. Soc. Jpn.* 12, 570.
- Kushiro I. (1976). Changes in viscosity and structure of melt of NaAlSi₂O₆ composition at high pressures. *J. Geophys. Res.* 81, 6347-6350.
- Kushiro I., Yoder Jr. H.S., Mysen B.O. (1976). Viscosities of basalt and andesite melts at high pressures. *J. Geophys. Res.* 81, 6351-6356.
- Kushiro I. (1978). Viscosity and structural changes of albite (NaAlSi₃O₈) melt at high pressures. *Earth Planet. Sci. Letters* 41, 87-90.
- Kushiro I. (1986). Viscosity of partial melts in the upper mantle. *J. Geophys. Res.* 91, 9343-9350.
- Lacks D.J., Rear D.B., Van Orman, J.A. (2007). Molecular dynamics investigation of viscosity, chemical diffusivities and partial molar volumes of liquids along the MgO-SiO₂ join as functions of pressure. *Geochim. Cosmochim. Acta* 71, 1312-1323.
- Lee S. H. (2007). Molecular Dynamics Simulation Study of the Transport Properties of Liquid Argon: The Green-Kubo Formula Revisited. *Bull. Korean Chem. Soc.* 28, 1371.
- Lees A. W., Edwards S. F. (1972). Computer study of transport processes under extreme conditions. *J. Phys. Chem. Solid State Phys.* 5, 1921.
- Leshner C.E., Hervig R.L., Tinker D. (1996). Self diffusion of network formers (silicon and oxygen) in naturally occurring basaltic liquid. *Geochim. Cosmochim. Acta* 60, 405-413.
- Li J.C.M., Chang P. (1955). Self-diffusion coefficient and viscosity in liquids. *J. Chem. Phys.* 23, 518-520.
- Liebske C., Schmickler B., Terasaki H., Poe B.T., Suzuki A., Funakoshi K.-I., Ando R., Rubie D.C. (2005). Viscosity of peridotite liquid up to 13 GPa: Implications for magma ocean viscosities. *Earth Planet. Sci. Lett.* 240, 589-604.
- Melosh H.J. (2007). A hydrocode equation of state for SiO₂. *Meteor. Planet. Science* 42, 2079-2098.
- Micoulaut M., Phillips J.C. (2003). Ring statistics and rigidity transitions in network glasses. *Phys. Rev. B* 67, 104204(1-9).
- Micoulaut M. (2004). Structure of densified amorphous germanium dioxide. *J. Phys. Cond. Matt.* 16, L131.

- Micoulaut M., Guissani Y., Guillot B. (2006). Simulated structural and thermal properties of glassy and liquid germania. *Phys. Rev. E* 73, 031504.
- Micoulaut M. (2010). Linking rigidity with enthalpic changes at the glass transition and the fragility of glass-forming liquids: insight from a simple oscillator model. *J. Phys. Cond. Matt.* 22, 285101.
- Mori S., Ohtani E., Suzuki A. (2000). Viscosity of the albite melt to 7 GPa at 2000 K. *Earth Planet. Sci. Letters* 175, 87-92.
- Mungall J.E. (2002). Empirical models relating viscosity and tracer diffusion in magmatic silicate melts. *Geochim. Cosmochim. Acta* 66, 125-143 (2002).
- Mysen B.O., Virgo D., Scarfe C.M. (1980). Relations between the anionic structure and viscosity of silicate melts- a Raman spectroscopic study. *Am. Mineral.* 65, 690-710.
- Mysen B.O., Richet P. (2005). *Silicate glasses and melts: properties and structure*, Elsevier.
- Negodaev G. D., Ivanov I. A., Evstop'ev K. K. (1972). *Elektrokhim.* 8, 234.
- Ogawa H., Shiraishi Y., Kawamura K., Yokokawa T. (1990). Molecular dynamics study on the shear viscosity of molten $\text{Na}_2\text{O}-2\text{SiO}_2$. *J. Non Crystal. Sol.* 119, 151-158.
- Oishi Y., Terai R., Ueda H. (1975). Oxygen diffusion in liquid silicates and relation to their viscosity. In *Mass Transport Phenomena in Ceramics* (eds. A.R. Cooper and A.H. Heuer) Plenum Press (N.Y.), 297-310.
- Pathmanathan K., Johari G.P. (1990). Temperature-dependence of molecular relaxation rates and of viscosity of glass-forming liquids. *Phil. Mag.* B 62, 225.
- Poe B.T., McMillan P.F., Rubie D.C., Chakraborty S., Yarger J., Diefenbacher J. (1997). Silicon and oxygen self-diffusivities in silicate liquids measured to 15 Gigapascals and 2800 Kelvin. *Science* 276, 1245-1248.
- Reid J.E., Poe B.T., Rubie D.C., Zotov N., Wiedenbeck M. (2001). The self-diffusion of silicon and oxygen in diopside ($\text{CaMgSi}_2\text{O}_6$) liquid up to 15 GPa. *Chem. Geol.* 174, 77-86.
- Reid J.E., Suzuki A., Funakoshi K.-I., Terasaki H., Poe B.T., Rubie D.C., Ohtani E. (2003). The viscosity of $\text{CaMgSi}_2\text{O}_6$ liquid at pressures up to 13 GPa. *Phys. Earth. Planet Int.* 139, 45-54.
- Russell J.K., Giordano D., Dingwell D.B. (2003). High-temperature limits on viscosity of non-Arrhenian silicate melts. *Am. Mineral.* 88, 1390-1394.
- Scarfe C.M. (1973). Viscosity of basic magmas at varying pressure. *Nature* 241, 101-102.
- Scarfe C.M., Mysen B.O., Virgo D. (1987). Pressure dependence of the viscosity of silicate melts. In *Magmatic processes: Physico-chemical processes* (Ed. B.O. Mysen, Spec. Publ. 1, 59-67, Geochem. Soc.)
- Schaefer L., Fegley Jr. B. (2004). A thermodynamic model of high temperature lava vaporization on Io. *Icarus* 169, 216-241.
- Schmelzer J.W.P., Zanutto E.D., Fokin V.M. (2005). Pressure dependence of viscosity. *J. Chem. Phys.* 122, 074511-1-11.
- Sharma S. K., Virgo D., Kushiro I. (1979). Relationship between density, viscosity and structure of GeO_2 melts at low and high pressures. *J. Non-Cryst. Solids* 33, 235.
- Shell M. S., Debenedetti P. G., Panagiotopoulos A. Z. (2002). Molecular Structural Order and Anomalies in Liquid Silica. *Phys. Rev. E* 66, 011202.
- Shimizu N., Kushiro I. (1984). Diffusivity of oxygen in jadeite and diopside melts at high pressures. *Geochim. Cosmochim. Acta* 48, 1295-1303.
- Shimizu N., Kushiro I. (1991). The mobility of Mg, Ca and Si in diopside-jadeite liquids at high pressures. In *Physical Chemistry of Magmas. Advances in Physical Geochemistry, Vol.9* (eds. L.L. Perchuk and I. Kushiro), pp. 192-212. Springer-Verlag, New York.
- Smith W., Forester T. (1996). DL_POLY_2.0: a general-purpose parallel molecular dynamics simulation package. *J. Mol. Graph.* 14, 136-141.
- Spera F.J., Ghiorso M.S., Nevins D. (2011). Structure, thermodynamic and transport properties of liquid MgSiO_3 : Comparison of molecular models and laboratory results. *Geochim. Cosmochim. Acta* 75, 1272-1296.
- Suzuki A., Ohtani E., Funakoshi K., Terasaki H. (2002). Viscosity of albite melt at high pressure and high temperature. *Phys. Chem. Minerals* 29, 159-165.
- Suzuki A., Ohtani E., Terasaki H., Funakoshi K. (2005). Viscosity of silicate melts in $\text{CaMgSi}_2\text{O}_6$ - $\text{NaAlSi}_2\text{O}_6$ system at high pressure. *Phys. Chem. Minerals* 32, 140-145.
- Suzuki A., Ohtani E., Terasaki H., Nishida K., Hayashi H., Sakamaki T., Shibazaki Y., Kikegawa T. (2011). Pressure and temperature dependence of the viscosity of a $\text{NaAlSi}_2\text{O}_6$. *Phys. Chem. Minerals* 38, 59-64.
- Teter J. (2003). unpublished results.
- Tinker T., Leshner C. E. (2001). Self diffusion of Si and O in dacitic liquid at high pressures. *Am. Mineral.* 86, 1.
- Tinker D., Leshner C.E., Hutcheon I.D. (2003). Self-diffusion of Si and O in diopside-anorthite melt at high pressures. *Geochim. Cosmochim. Acta* 67, 133-142.
- Tinker D., Leshner C.E., Baxter G.M., Uchida T., Wang Y. (2004). High-pressure viscometry of polymerized silicate melts and limitations of the Eyring equation. *Am. Mineral.* 89, 1701-1708.
- Toplis M.J., Dingwell D.B. (2004). Shear viscosities of $\text{CaO}-\text{Al}_2\text{O}_3-\text{SiO}_2$ and $\text{MgO}-\text{Al}_2\text{O}_3-\text{SiO}_2$ liquids: Implications for the structural role of aluminium and the degree of polymerisation of synthetic and natural aluminosilicate melts. *Geochim. Cosmochim. Acta* 68, 5169-5188.
- Trachenko K., Dove M.T., Brazhkin V.V., El'kin F.S. (2004) Network rigidity and properties of SiO_2 and GeO_2 glasses under pressure, *Phys. Rev. Lett.* 93, 135502.
- Truhlarova M., Veprek O. (1970). Dissolving of vitreous SiO_2 in various types of glass melts under conditions of free convection. *Silikaty* 14, 1-5.

- Vaills Y., Luspain Y., Hauret G. (2001) Annealing effects in SiO_2 - Na_2O glasses investigated by Brillouin scattering. *J. Non-Cryst. Solids* 286, 224.
- Vaills Y., Qu T., Micoulaut M., Chaimbault F., Boolchand B. (2005). Direct evidence of rigidity loss and self-organization in silicates. *J. Phys. Cond. Matt.* 17, 4889-4896.
- Vessal B., Greaves G.N., Marten P. T., Chadwick A. V., Mole R., Houde-Walter S. (1992). Cation microsegregation and ionic mobility in mixed alkali glasses. *Nature* 356, 504.
- Villeneuve N., Neuville D.R., Boivin P., Bachelery P., Richet P. (2008). Magma crystallization and viscosity: A study of molten basalts from the Piton de la Fournaise volcano (La Réunion island). *Chem. Geol.* 256, 242-251.
- Vuilleumier R., Sator N., Guillot B. (2009). Computer modeling of natural silicate melts: What can we learn from ab initio simulations. *Geochim. Cosmochim. Acta* 73, 6313-6339.
- Waff H. S. (1975). Pressure-induced coordination changes in magmatic liquids. *Geophys. Res. Lett.* 2, 193.
- Wang L.M., Angell C.A., Richert R. (2006). Fragility and thermodynamics in nonpolymeric glass-forming liquids. *J. Chem. Phys.* 125, 074505.
- Wodcock L.V., Angell C.A., Cheeseman P. (1976). Molecular dynamics studies of the vitreous state: Simple ionic systems and silica. *J. Chem. Phys.* 65, 1565.
- Wondraczek L., Behrens H., Yue Y., Deubener J., Scherer G.W. (2007). Relaxation and glass transition in an isostatically compressed diopside glass. *J. Am. Ceram. Soc.* 90, 1556.
- Yinnon H., Cooper A.R. Jr. (1980). Oxygen diffusion in multicomponent glass forming silicates. *Phys. Chem. Glasses* 21, 204-211.
- Yuan X., Cormack A.N. (2001). Local structures of MD-modeled vitreous silica and sodium silicate glasses. *J. Non-Cryst. Solids* 283, 69.
- Zhang L., Jahanshahi S. (1998). Review and modeling of viscosity of silicate melts: Part I. Viscosity of binary and ternary silicates containing CaO, MgO, and MnO. *Metall. Mat. Transactions B* 29, 177.
- Zhang L., Van Orman J.A., Lacks D.J. (2010). Molecular dynamics investigation of MgO-CaO-SiO₂ liquids: Influence of pressure and composition on density and transport properties. *Chem. Geol.* 275, 50-57.
- Zheng Q., Mauro J.C., Ellison A.J., Potuzak M., Yue Y. (2011). Universality of the high-temperature viscosity limit of silicate liquids. *Phys. Rev. B* 83, 212202-1-4.