

UC Irvine
ICTS Publications

Title

Recipient Related Predictors of Kidney Transplantation Outcomes in the Elderly

Permalink

<https://escholarship.org/uc/item/8q7714nh>

Journal

Clinical transplantation, 27(3)

ISSN

1399-0012

Authors

Hatamizadeh, Parta
Molnar, Miklos Z
Streja, Elani
[et al.](#)

Publication Date

2013-03-21

Peer reviewed



Published in final edited form as:

Clin Transplant. 2013 May ; 27(3): 436–443. doi:10.1111/ctr.12106.

Recipient Related Predictors of Kidney Transplantation Outcomes in the Elderly

Parta Hatamizadeh, MD^{1,2}, Miklos Z Molnar, MD, PhD^{1,3,4}, Elani Streja, MPH, PhD¹, Paungpaga Lertdumrongluk, MD¹, Mahesh Krishnan, MD, MPH, MBA⁵, Csaba P Kovcsdy, MD^{6,7}, and Kamyar Kalantar-Zadeh, MD, MPH, PhD^{1,8}

¹Harold Simmons Center for Chronic Disease Research & Epidemiology, University of California Irvine Medical Center, Irvine, California

²Division of Nephrology, University of Michigan, Ann Arbor, MI

³Institute of Pathophysiology, Semmelweis University, Budapest, Hungary

⁴Dept. of Medicine, Division of Nephrology, University Health Network, University of Toronto, Toronto, Ontario, Canada

⁵DaVita, Inc., Denver, Colorado

⁶Division of Nephrology, Memphis VA Medical Center, Memphis, TN, USA

⁷Division of Nephrology, University of Tennessee Health Science Center, Memphis, Tennessee

⁸Division of Nephrology & Hypertension, University of California Irvine Medical Center, Orange, CA

Abstract

Background—It is not clear whether in old people with end-stage renal disease kidney transplantation is superior to dialysis therapy.

Methods—We compared mortality rates between kidney transplant recipients (KTRs) and the general population across different age categories. We also examined patient and allograft survival in 15,667 elderly KTRs (65–<90 years old, 36% female) within 3 age subgroups (65–<70, 70–<75, 75 years).

Results—The rise in the relative risk of death in older age groups was substantially less in KTRs than in the general population, i.e., 1.8 and 2.0 vs. 21.4 and 76.6 in those 65–<75 and 75 years-old, respectively, compared to 15–<65 years-old people (reference group). In 65–<70 year old KTRs, obesity (BMI >30 kg/m²) was associated with 19% higher risk of graft failure (HR:1.19 [1.07–1.33], p = 0.002). Diabetes was a predictor of worse patient survival in all age groups but poorer allograft outcome in the youngest age group (65–<70 years-old) only. None of the examined risk factors affected allograft outcome in the oldest group (75 years-old) although there was a 49% lower trend of graft failure in very old Hispanic recipients (HR:0.51 [0.26–1.01], p = 0.05).

Correspondence: Kamyar Kalantar-Zadeh, MD, MPH, PHD, Harold Simmons Program for Kidney Disease Research & Epidemiology, Division of Nephrology & Hypertension, University of California Irvine, School of Medicine, 101 The City Drive South, City Tower, Suite 400 - ZOT: 4088, Orange, California 92868-3217, Tel: (714) 456-5142, Fax : (714) 456-6034, kkz@uci.edu.

Relevant Potential Conflict of Interest:

Dr. Krishnan is an employee of DaVita. Dr. Kalantar-Zadeh was the medical director of DaVita Harbor-UCLA/MFI in Long Beach, CA. Other authors have not declared any conflict of interest.

Conclusions—Kidney transplantation may attenuate the age-associated increase in mortality, and its superior survival gain is most prominent in the oldest recipients (> 75 years-old). The potential protective effect of kidney transplantation on longevity in the elderly deserves further investigation.

Keywords

elderly; senior; graft failure; kidney transplantation; longevity; mortality

Introduction

The senior population, aged 65 or older, is increasing rapidly all over the world including the United States. (1) According to the National Health and Nutrition Examination Survey (NHANES), the percentage of CKD stage 3 or 4 patients in population aged 60 and over increased from 1.3% (1988–1994) to 2.3% (2003–2006). (2) This finding corresponds to a rise in the number of senior kidney transplant recipients.

Several studies demonstrated a survival advantage with transplantation among the senior patients compared to dialysis patients. (3–7) The study by Wolfe and colleagues demonstrated that primary deceased donor transplantation, compared to maintenance hemodialysis, was associated with increased cumulative survival rate after the first year post-transplantation, with an increased projected life span of 5 years for patients aged 60 to 74 years without diabetes and 3 years for the same age group patients with diabetes. (7) In a study by Gill and colleagues, the expected survival rates for patients kidney transplant waitlisted patients > 70 years old was 4.5 years and 8.2 years for those who received a kidney transplant. (8) Senior patients also have a good quality of life after kidney transplantation (9) and lower rates of acute and chronic rejections compared with younger recipients. (10) However, the senior KTR survival at one, five, and ten years is approximately 80 to 90, 70 and 50 percents, respectively. (11–19)

Given the rapid growth of the number of senior patients undergoing kidney transplantation, it is important to be able to identify the appropriate senior candidates for kidney transplantation.

Published studies regarding the recipient factors that would predict outcomes in senior KTRs are scarce. In a recent study by Heldal et al, Charlson comorbidity index (CCI) scores could not predict mortality in patients > 75 years or older who had received their first transplanted kidney. However, CCI scores could do so in first KTRs of both age groups 60–69 years and 45–54 years. (20) Wu and colleagues found that a modified CCI score excluding age was a predictor of patient survival in recipients 60 years or older except in the subgroup of these patients who received kidneys from living donors. (21)

In the present study, we examined the effects of various recipient related factors on patient survival and kidney graft outcomes separately in different age groups of senior recipients. We also compared all-cause mortality rates among different age groups in the KTRs with those of the general population to compare age-induced increase in mortality risk in patients with and without kidney transplantation.

Patients and Methods

Patients

The study population consisted of KTRs listed in the SRTR from 2001 until June 2007. The SRTR data system includes data on all transplant donors, wait-listed candidates and

transplant recipients in the United States, which are submitted by members of the Organ Procurement and Transplantation Network (OPTN). The Health Resources and Services Administration (HRSA), U.S. Department of Health and Human Services provides oversight to the activities of the OPTN and SRTR contractors.

This study was approved by the Institutional Review Committees of the Los Angeles Biomedical Research Institute at Harbor-UCLA Medical Center. Because of the large sample size, the anonymity of the studied patients and the non-intrusive nature of the research, the requirement for informed consent was waived.

Clinical, Demographic and Laboratory Measures

Demographic data and details of medical history were collected, including age, gender, race, ethnicity and dialysis vintage. Dialysis vintage was defined as the duration of time between the first day of dialysis treatment and the day of kidney transplantation. Information on the recipients' serum creatinine, serum albumin, weight and height (for calculation of body mass index (BMI), and information on 7 co-morbidities, diabetes, angina (as an indicator of coronary artery disease), chronic obstructive pulmonary disease, hypertension, peptic ulcer, peripheral vascular disease and cerebrovascular disease was also collected. BMI >30 kg/m² was considered obese and was analyzed as a dichotomous variable. We analyzed data on senior KTRs, defined as those aged 65 years or older at the time of first transplantation. This study population was divided into 3 age groups (65–<70, 70–<75 and ≥75 years) for subgroup analyses.

Statistical Methods

Descriptive results are reported as Mean (± Standard Deviation [SD]), percentage (%), median and percentile when appropriate.

We compared the mortality rates and ratios across 4 age groups (15–<65, 65–<70, 70–<75 and ≥75 years old) between the kidney transplant recipients (derived from the SRTR 2001–2007) and the general population using United States population in 2005 (derived from the National Vital Statistics System). After calculating the crude mortality rates in the KTRs and the general population across 3 age groups, the relative risk (RR) of death was calculated for the 2 senior groups compared to the 15–<65 years old group (reference) and the ratio of mortality RR for kidney transplant patients to the general population was estimated in each group.

For survival analysis within our study population, we used Cox proportional hazard regression models separately across the different age groups. Our two primary outcomes were patient survival and kidney allograft survival. For graft survival analysis, graft failure was defined as re-initiation of dialysis treatment or re-transplantation. Imminent graft failure was defined as an estimated glomerular filtration rate (eGFR) <30 mL/min/1.73 m² using the modified diet in renal disease (MDRD) equation, provided there was no eGFR >40 mL/min/1.73 m² reported afterward, to exclude cases of acute rejection that had been treated successfully.

We used two different approaches for graft survival analysis. In death-censored graft survival analysis, patients who died before re-initiation of dialysis treatment or re-transplantation were censored regardless of the function of their transplanted kidney at the time of death. In combined graft failure-imminent graft failure analysis, patients were followed until either graft failure or imminent graft failure or until censoring (death or end of follow up period) whichever happened first.

For each analysis, 2 models were examined:

- I. Unadjusted model.
- II. Adjusted models that included age, gender, race-ethnicity (African Americans and other self-categorized Blacks, Caucasian (or Non-Hispanic Whites), Asians and Hispanics), dialysis vintage, co-morbidities, and pre-transplant parameters including serum creatinine, serum albumin and BMI.

All analyses were carried out by SAS version 9.1, SAS Institute Inc., Cary, North Carolina.

Results

In the comparison of KTRs with the general population, even though KTRs aged 65–<75 and 75 years old patients had 1.8 and 2.0 times higher mortality risk, respectively, compared to those 15–<65 years old, the age-related rise in mortality was substantially lower among KTRs as opposed to the general population (Figure 1). The rise in the relative risk of death in older age groups in the general population was 21.4 and 76.6 in those 65–<75 and 75 years-old, respectively, compared to 15–<65 years-old people (reference group); hence, there as 75% and 92% lower death risk ratio of KTRs to general population in these two elderly age groups (see Figure 1 and Table S1).

Within the study population, additional analysis was performed on 15,667 KTRs older than 65 years at the time of transplantation. The median follow-up time for all-cause mortality and graft failure was 1,425 days and that of combined graft failure-imminent graft failure was 1,242 days. There were 24,901 deaths (17%), 20,614 graft failures (14%) and 21,600 imminent graft failures (15%), some of whom eventually developed graft failure within the study period. Accordingly, there were a total of 34,438 combined graft failure-imminent graft failures (24%). Patients' ages ranged between 65 and 90 years and the number of cases decreased with increasing age. The majority (64%) of the patients were in the youngest age group (65–70 years), with only 8% older than 70 years (Table 1 and Figure S1). Table 1 presents the clinical, demographic, laboratory, and transplant data across 4 different age groups of KTRs, including the 3 study age groups as well as adults younger than 65 years old in one group for comparison. The majority of transplant recipients were Caucasians and men in all age groups particularly in the older groups. In contrast to the increase in crude mortality with advancing age, the combined graft failure-imminent graft failure rate was lower in seniors compared to non-senior recipients and was the lowest in the eldest group. Among the 3 senior age groups, the incidence of diabetes was lower in the older age groups.

Recipient related predictors of all-cause mortality in different senior age groups are demonstrated in Table 2 and Figure 2. Diabetes was a strong predictor of all-cause mortality in all 3 elderly groups both in unadjusted and adjusted analyses. Female gender was associated with lower all-cause mortality in age groups 65–<70 years. However, gender did not show significant association with patient survival in the eldest age group (>75 years). In 10,101 patients with ages 65–<70 years, Asian and Hispanic races were predictors of lower mortality and Black race was associated with a higher all-cause mortality in the adjusted model. Angina was also a predictor of higher mortality in this age group. However, although obesity was associated with a higher mortality in this age group in the unadjusted model, it was not a predictor of mortality after the adjustment. In 4,271 patients ages 70–<75 years, in addition to diabetes and female gender, Hispanic race was a predictor of lower all-cause mortality, whereas Black race and angina were predictors of higher all-cause mortality. Interestingly enough, only in transplant recipient patients 75 years or older, obesity was a predictor of all cause mortality after adjustment.

Figure 3 and Tables S2 through S4 display recipient related predictors of graft failure in the 3 elderly subgroups by two different approaches, the conventional death-censored graft

failure and the combined graft failure-imminent graft failure approach. As demonstrated in Figure 3 and Table S2, predictors of graft survival, as evaluated by combined graft failure-imminent graft failure approach, are similar to those of patient survival in the youngest elderly group (65–<70 year old) with the exception of Asian race and angina, which were not found to be predictors of graft survival in this age group. Additionally, female gender, which was a protective factor against all-cause mortality, was paradoxically associated with worse kidney transplant outcomes. Hispanic race was associated with a better graft survival and Black race, obesity and diabetes were associated with a higher combined graft failure-imminent graft failure in this age group. Indeed in 65–<70 year old KTRs, obesity (BMI >30 kg/m²) was associated with 19% higher risk of graft failure (adjusted HR: 1.19 [1.07–1.33], $p = 0.002$). With conventional death-censored graft survival analysis, however, obesity, diabetes and gender were not shown to be independent predictors of graft survival in this age subgroup.

In the 70 to 75 year-old KTRs, only female gender was found to be a predictor of poorer graft survival using the combined approach. The conventional approach was unable to reveal this association (Table S3). None of the studied parameters were shown to be a predictor of graft survival in the kidney transplant recipients older than 75 years in adjusted or unadjusted analyses by combined method. Nevertheless, the conventional death-censored analysis demonstrated a better graft survival for Hispanic patients in this age subgroup (Table S4). In the oldest KTRs (>75 years), there was a 49% lower trend of combined graft failure in the Hispanic recipients (HR: 0.51 [0.26–1.01], $p = 0.05$).

Discussion

Our study showed the following findings: (A) Increase in all-cause mortality with advancing age is dramatically attenuated in kidney transplant recipients compared to general population. (B) Kidney transplant outcome is better in the older than in younger KTRs and is the best in the eldest people (>75 years old). (C) Among senior KTRs, diabetes has a negative effect on patient survival in all patients but a negative effect on graft survival only in those between 65 and <70 years old. (D) Female senior KTRs generally survive better than their male counterparts but their transplanted kidneys survive less. (E) Obesity in the 65–70 year old recipients is associated with higher graft failure; and (F) in the very old recipients (>75 years), Hispanics tend to gain the best outcomes.

The remarkable reduction in all-cause mortality with advancing age in KTRs compared with general population deserves special attention. Further study in this regard can potentially open a new avenue for the study of longevity in addition to the information it can provide about the possible ways to improve kidney transplantation outcomes. It also underscores the fact that kidney transplantation needs to be encouraged in appropriate older patients. Of note however, potential effects of a selection bias needs to be considered. Older patients who are selected for kidney transplantation may be those who are relatively healthier compared to age-matched patients, whereas younger transplant candidates may not have the same advantage. Another potential explanation of this observation is that the lower increased mortality risk in older transplant recipients is related to a higher mortality in younger transplant recipients, relative to the general population within the same age group. Further studies are needed in this regard.

In a recent study by Tillius and colleagues on 108,188 recipients of deceased donor kidneys between 1995 and 2008, older recipients had a better graft survival compared to younger KTRs even with poorer quality of transplanted kidneys. (22) Our study revealed that after including imminent graft failure in the analysis, the rate of combined graft failure-imminent graft failure is less in seniors and is the least in the eldest subgroup. This further emphasizes

a potential desirable effect of advanced age on transplant survival, even after eliminating the effect of a potential bias imposed by conventional analysis due to overlooking graft failures in those who died. Therefore, the lower number of older recipients (as shown in Figure S1), should be revisited and kidney transplantation of those in the older subgroup should be encouraged for appropriate cases.

The current study also displayed the deleterious effect of diabetes on patient survival in all senior age groups. Even though it seems to be expected, some smaller scale studies were unable to show this effect. (20) Our study also demonstrated the harmful effect of diabetes on graft survival in the senior patients 65 to <70 years old but not in those 70 years or older. Interestingly, even though diabetes is more prevalent among senior recipients compared to younger individuals, within the senior recipients, its prevalence decreases by increasing age. This could be due to the fact that diabetic patients with very advanced age have less chance of being selected for transplantation. This is despite the existing evidence of improved survival with kidney transplantation compared to other renal replacement therapy (RRT) modalities even in the diabetic senior population. (7) A newly published study of diabetic kidney transplant recipients showed a decreased post-transplant survival in those who had a poor pre-transplant glycemic control; however, it did not show any effect of pre-transplant glycemic control on allograft outcomes. (23) Considering all of these findings, one should be cautious about kidney transplantation in younger groups of senior diabetic patients, particularly if they had a poor glycemic control. Notwithstanding, diabetes per se should not be a contraindication for kidney transplantation in the seniors, especially in those who are 70 years or older. However, this result might be biased due to small sample size. Further studies are needed.

In patients aged between 65 and <75 years, graft survival was shorter among women compared to men. Nonetheless, women survived longer. This could be due to the fact that women in general have a better life expectancy than men (24) but senior women may get less of a benefit from a kidney transplant compared to men of the same age.

Angina, as an indicator of coronary artery disease, also had no association with graft survival. Therefore, angina per se, should not keep the clinician from considering kidney transplantation.

Hispanic recipients generally had a better and African-Americans had a worse outcome, particularly in the younger senior age groups. Similar findings have been reported in other populations. (25) Putting this finding into consideration will help better selection of the appropriate cases for kidney transplantation.

In general, patient and graft survival in the oldest group demonstrated less association with any of the studied parameters. This could be due to the fact that these patients have a relatively short life, and therefore less time for different factors to express their effects. However, there were also less patients in that age group; hence lower chance of reaching statistically significant results.

This study is remarkable for its large sample size and for the multitude of important covariates, for which the analyses were adjusted. This is also one of the first studies that evaluated the effects of recipient characteristics on outcomes separately in different age subgroups of senior patients in a large study population.

We also used a novel approach for transplant kidney survival analysis, i.e. combined graft failure-imminent graft failure analysis. For kidney graft survival analysis, most studies perform either unadjusted graft survival analysis, in which patient death is considered an endpoint for graft survival regardless of the functional status of the transplanted kidney at

the time of death, and/or death- censored graft survival approach, whereas patients who die will be censored regardless of graft function at the time of death. (25–28) In the death-censored approach, patients with graft failure, who die before they have a chance to initiate another form of RRT, will not be considered as transplant failures. In the unadjusted approach, on the other hand, patient death is considered graft failure even if the transplanted kidney is functioning perfectly at the time of death. We defined the concept of “imminent graft failure” to include those who have not yet been started on another form of RRT, but their transplanted kidney is insufficiently functioning (Stage IV or more advanced CKD) and is imminent to become end stage. The combined graft failure-imminent graft failure approach provides a more accurate evaluation of longevity of the transplanted kidney and eliminates the mentioned potential biases incurred by the other two conventional methods.

Our study had some limitations. As with all registry-based observational studies, the current study suffered from certain limitations such as presence of missing data. Additionally, similar to all observational studies, the results cannot prove causality. Some information such as immunosuppressive and other therapeutic regimens, which have potential impacts on patient and graft survival, were not available in the SRTR database. The lower number of cases in the eldest subgroup of patients can potentially interfere with the statistical significance of the results. Furthermore, longer follow up time could have provided more accurate information in terms of optimal use of transplanted kidney in the older recipient population as compared to younger recipients. Using angina as an indicator of coronary artery disease may not be inclusive; however, the SRTR database lacks information regarding the other indicators of coronary artery disease, which might be more accurate.

Conclusions

The number of senior patients with advanced CKD in need of RRT is growing rapidly. Kidney transplantation may attenuate the effect of aging on longevity. Moreover, advanced age is associated with relatively better kidney allograft outcomes. (29) Additionally, most co-morbidities are not associated with poorer outcomes in the oldest kidney transplant recipients (> 75 years old). Therefore, kidney transplantation should be encouraged for the appropriate senior patients. Additional studies of the potential disproportional protective effect of kidney transplantation on patient longevity may bring new insights to the management of kidney transplantation as well as the aging phenomenon and survival.

Supplementary Material

Refer to Web version on PubMed Central for supplementary material.

Acknowledgments

The authors would like to thank DaVita Clinical Research (DCR) for providing patient data

Funding Source:

The study was supported by KKZ’s research grant from the American Heart Association grant (0655776Y). KKZ’s other funding sources include the National Institute of Diabetes, Digestive and Kidney Disease of the National Institute of Health (R01 DK078106); a research grant from DaVita Clinical Research and a philanthropic grant from Mr. Harold Simmons. MZM is recipient of the Hungarian Eötvös Scholarship (MÖB/77-2/2012).

References

1. U.S. Census Bureau. Statistical Abstract of the United States: 2011.

2. Bethesda: National Institutes of Health, National Institute of Diabetes and Digestive and Kidney Diseases; 2010. US Renal Data System: USRDS 2010 Annual Data Report: Atlas of Chronic Kidney Disease and End-Stage Renal Disease in the United States.
3. Giessing M, Budde K, Fritsche L, Slowinski T, Tuerk I, Schoenberger B, et al. "Old-for-old" cadaveric renal transplantation: surgical findings, perioperative complications and outcome. *European urology*. 2003; 44(6):701. [PubMed: 14644123]
4. Johnson DW, Herzig K, Purdie D, Brown AM, Rigby RJ, Nicol DL, et al. A comparison of the effects of dialysis and renal transplantation on the survival of older uremic patients. *Transplantation*. 2000; 69(5):794. [PubMed: 10755528]
5. Oniscu GC, Brown H, Forsythe JL. How great is the survival advantage of transplantation over dialysis in elderly patients? *Nephrol Dial Transplant*. 2004; 19(4):945. [PubMed: 15031354]
6. Rao PS, Merion RM, Ashby VB, Port FK, Wolfe RA, Kayler LK. Renal transplantation in elderly patients older than 70 years of age: results from the Scientific Registry of Transplant Recipients. *Transplantation*. 2007; 83(8):1069. [PubMed: 17452897]
7. Wolfe RA, Ashby VB, Milford EL, Ojo AO, Ettenger RE, Agodoa LY, et al. Comparison of mortality in all patients on dialysis, patients on dialysis awaiting transplantation, and recipients of a first cadaveric transplant. *The New England journal of medicine*. 1999; 341(23):1725. [PubMed: 10580071]
8. Gill JS, Tonelli M, Johnson N, Kiberd B, Landsberg D, Pereira BJ. The impact of waiting time and comorbid conditions on the survival benefit of kidney transplantation. *Kidney Int*. 2005; 68(5):2345. [PubMed: 16221239]
9. Humar A, Denny R, Matas AJ, Najarian JS. Graft and quality of life outcomes in older recipients of a kidney transplant. *Exp Clin Transplant*. 2003; 1(2):69. [PubMed: 15859911]
10. Pratschke J, Merk V, Reutzel-Selke A, Pascher A, Denecke C, Lun A, et al. Potent early immune response after kidney transplantation in patients of the European senior transplant program. *Transplantation*. 2009; 87(7):992. [PubMed: 19352117]
11. Velez RL, Brinker KR, Vergne-Marini PJ, Nesser DA, Long DL, Trevino G, et al. Renal transplantation with cyclosporine in the elderly population. *Transplantation proceedings*. 1991; 23(2):1749. [PubMed: 1905073]
12. Morris GE, Jamieson NV, Small J, Evans DB, Calne R. Cadaveric renal transplantation in elderly recipients: is it worthwhile? *Nephrol Dial Transplant*. 1991; 6(11):887. [PubMed: 1775255]
13. Doyle SE, Matas AJ, Gillingham K, Rosenberg ME. Predicting clinical outcome in the elderly renal transplant recipient. *Kidney Int*. 2000; 57(5):2144. [PubMed: 10792636]
14. Saudan P, Berney T, Leski M, Morel P, Bolle JF, Martin PY. Renal transplantation in the elderly: a long-term, single-centre experience. *Nephrol Dial Transplant*. 2001; 16(4):824. [PubMed: 11274281]
15. Bentas W, Jones J, Karaoguz A, Tilp U, Probst M, Scheuermann E, et al. Renal transplantation in the elderly: surgical complications and outcome with special emphasis on the Eurotransplant Senior Programme. *Nephrol Dial Transplant*. 2008; 23(6):2043. [PubMed: 18203840]
16. Oniscu GC, Brown H, Forsythe JL. How old is old for transplantation? *Am J Transplant*. 2004; 4(12):2067. [PubMed: 15575911]
17. Fabrizii V, Winkelmayr WC, Klauser R, Kletzmayer J, Saemann MD, Steininger R, et al. Patient and graft survival in older kidney transplant recipients: does age matter? *J Am Soc Nephrol*. 2004; 15(4):1052. [PubMed: 15034109]
18. Kauffman HM, McBride MA, Cors CS, Roza AM, Wynn JJ. Early mortality rates in older kidney recipients with comorbid risk factors. *Transplantation*. 2007; 83(4):404. [PubMed: 17318072]
19. Tesi RJ, Elkhammas EA, Davies EA, Henry ML, Ferguson RM. Renal transplantation in older people. *Lancet*. 1994; 343(8895):461. [PubMed: 7905959]
20. Heldal K, Hartmann A, Leivestad T, Svendsen MV, Foss A, Lien B, et al. Clinical outcomes in elderly kidney transplant recipients are related to acute rejection episodes rather than pretransplant comorbidity. *Transplantation*. 2009; 87(7):1045. [PubMed: 19352126]
21. Wu C, Shapiro R, Tan H, Basu A, Smetanka C, Morgan C, et al. Kidney transplantation in elderly people: the influence of recipient comorbidity and living kidney donors. *J Am Geriatr Soc*. 2008; 56(2):231. [PubMed: 18070005]

22. Tullius SGTH, Guleria I, Malek SK, Tilney NL, Milford E. The combination of donor and recipient age is critical in determining host immunoresponsiveness and renal transplant outcome. *Ann Surg.* 2010; 252(4):662. [PubMed: 20881773]
23. Molnar MZHE, Hoshino J, Krishnan M, Nissenson AR, Kovesdy CP, Kalantar-Zadeh K. Association of Pretransplant Glycemic Control With Posttransplant Outcomes in Diabetic, Kidney-Transplant Recipients. *Diabetes Care.* 2011
24. Prevention CfDCa. Life expectancy at birth, at 65 and 75 years of age by race and sex Health, United States 2010. 2010
25. Chakkera HAOHA, Johansen KL, Hynes D, Stroupe K, Colin PM, Chertow GM. Influence of race on kidney transplant outcomes within and outside the Department of Veterans Affairs. *J Am Soc Nephrol.* 2005; 16(1):269. [PubMed: 15563568]
26. Tullius SG, Tilney NL. Both alloantigen-dependent and -independent factors influence chronic allograft rejection. *Transplantation.* 1995; 59(3):313. [PubMed: 7871557]
27. Weiss ASSG, Wiseman AC. Twelve-month pancreas graft function significantly influences survival following simultaneous pancreas-kidney transplantation. *Clin J Am Soc Nephrol.* 2009; 4(5):988. [PubMed: 19406961]
28. Hariharan SJC, Bresnahan BA, Taranto SE, McIntosh MJ, Stablein D. Improved graft survival after renal transplantation in the United States, 1988 to 1996. *The New England journal of medicine.* 2000; 342(9):605. [PubMed: 10699159]
29. Molnar MZ, Streja E, Kovesdy CP, Shah A, Huang E, Bunnapradist S, et al. Age and the associations of living donor and expanded criteria donor kidneys with kidney transplant outcomes. *American journal of kidney diseases : the official journal of the National Kidney Foundation.* 2012; 59(6):841. [PubMed: 22305759]

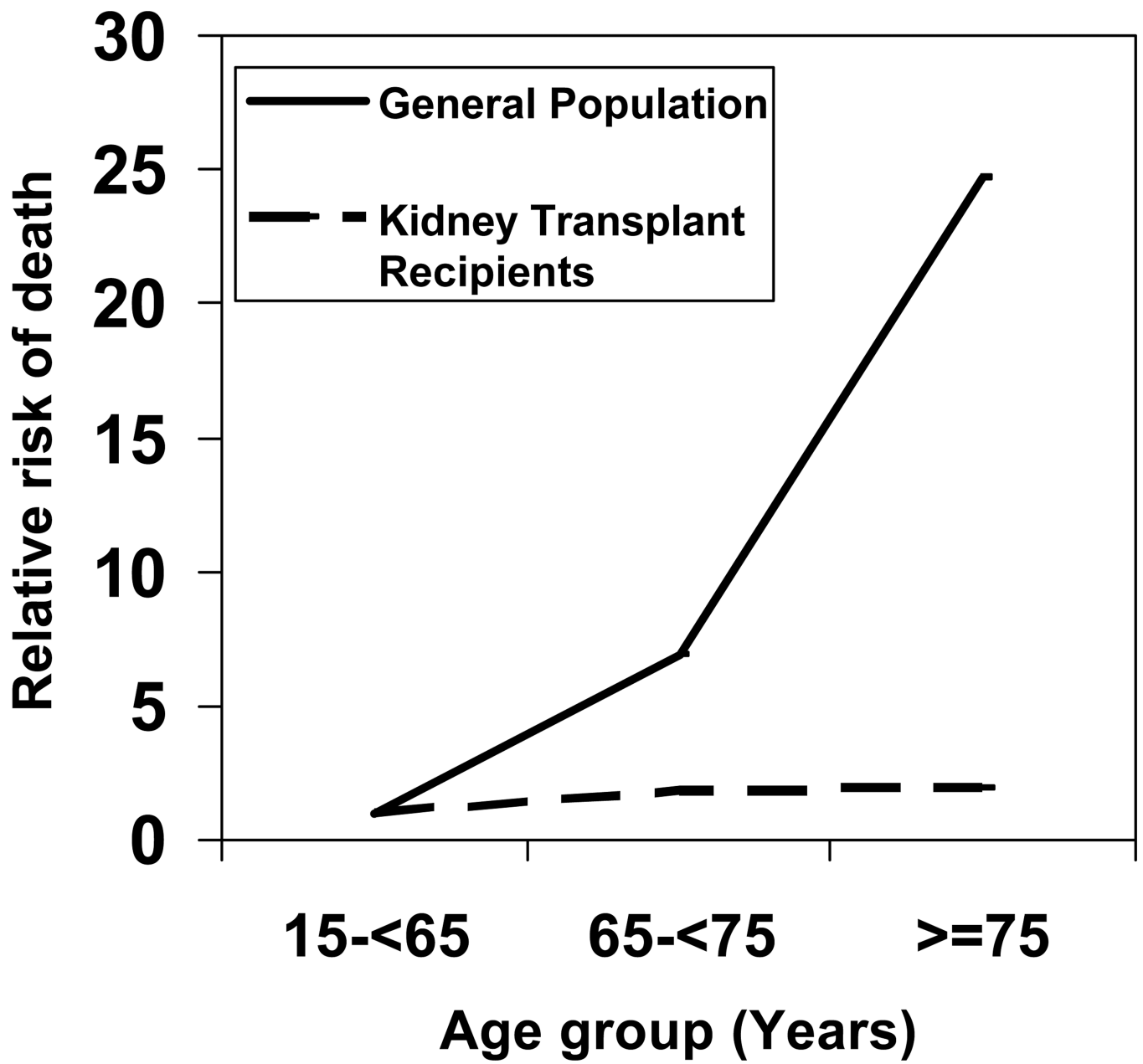


Figure 1. Relative risk of death with advancing age in the kidney transplant recipients and the general population

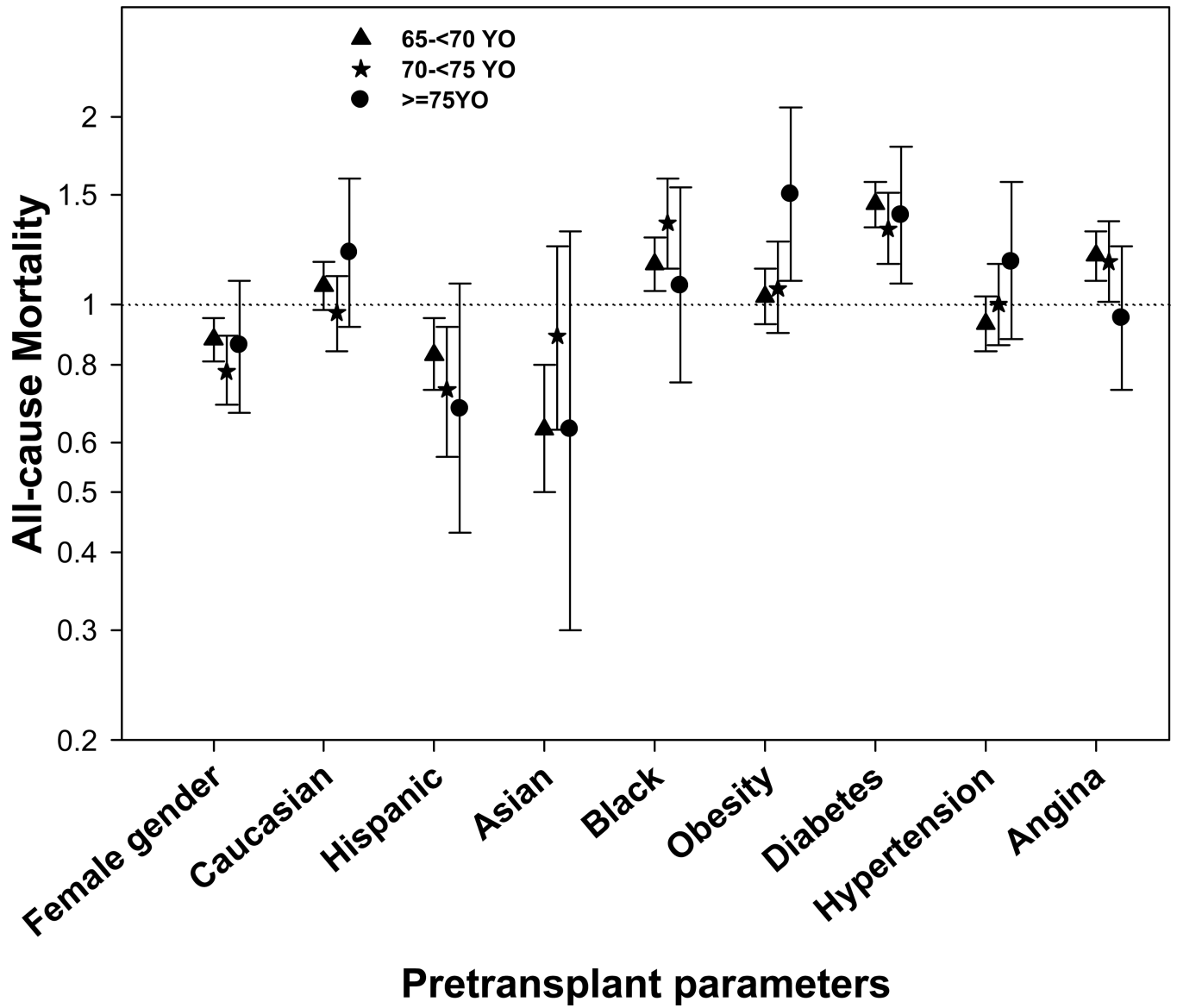


Figure 2. Hazard ratio with 95% confidence interval of all-cause mortality for pre-transplant parameters in 3 elderly age categories measured by the adjusted model

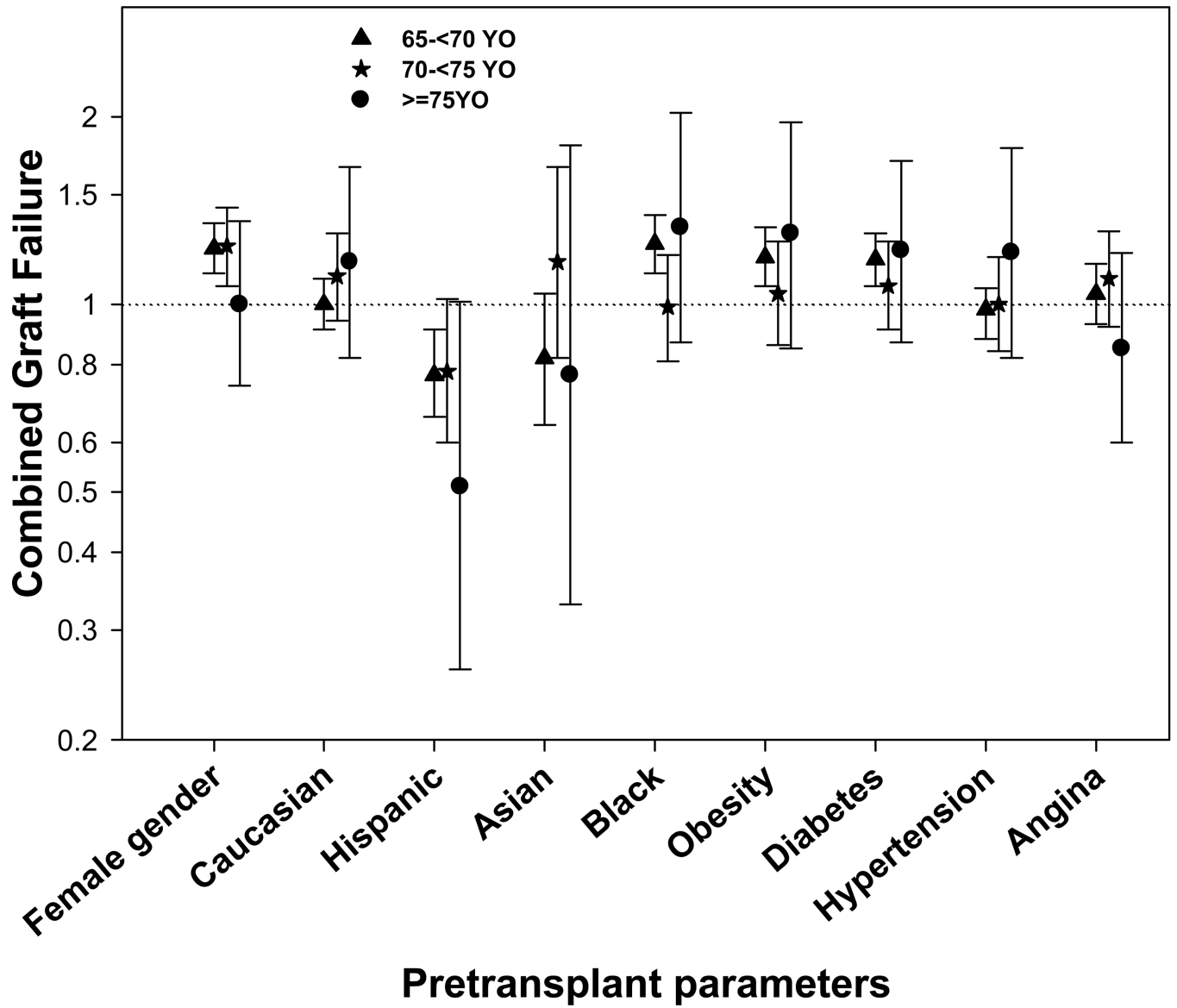


Figure 3. Hazard ratio with 95% confidence interval of combined graft failure-imminent graft failure for pre-transplant parameters in 3 elderly age categories measured by the adjusted model

Incremental categories of recipient age in 145470 kidney transplanted patients including selected clinical and laboratory values in each group. The study population included the last 3 groups only. Non-elderly recipients' information is included for comparison.

Table 1

Age range (year)	ALL	15-<65	65-<70	70-75	75	p-for trend
Number	145,470	129,803	10,101	4,271	1,295	<0.001
Age (years) (mean±SD)	47.3±13.6	44.7±12.0	66.8±1.4	71.6±1.4	77.1±2.2	<0.001
Gender (% women)	40	41	38	34	27	<0.001
Race (% Caucasian)	59	58	64	71	79	<0.001
Race (% Hispanic)	12	12	10	9	6	<0.001
Race (% Asian)	4	4	4	4	3	0.22
Race (% Black)	23	24	20	16	11	<0.001
BMI (kg/m ²) (mean±SD)	26.8±5.5	26.8±5.6	27.4±4.9	26.8±4.5	26.4±4.4	<0.001
Deaths (n) [Crude Death Rate %]	24901 [17]	20567 [16]	2759 [27]	1178 [28]	397 [31]	<0.001
Graft failure (n) [Crude Graft failure Rate %]	20614 [14]	19077 [15]	1014 [10]	397 [9]	126 [10]	<0.001
Imminent graft failure (n) [Crude imminent graft failure Rate %]	21600 [15]	19598 [15]	1306 [13]	574 [13]	122 [9]	<0.001
Combined graft failure-Imminent graft failure (n) [Crude combined graft failure Rate %]	34438 [23.67]	31315 [24.13]	2027 [20.07]	867 [20.3]	229 [17.68]	<0.001
Acute rejection episode (n) NEW	10121	9174	600	256	91	<0.001
Acute rejection episode (n)	7306	6702	365	180	59	<0.001
Comorbidities						
Diabetes mellitus (%)	22	21	30	24	16	<0.001
Hypertension [%]	77	76	82	82	84	<0.001
Angina [%]	11	9	20	19	19	<0.001
Cerebrovascular disease [%]	2	2	4	4	3	<0.001
Peripheral vascular disease [%]	4	4	6	6	4	<0.001
COPD [%]	1	1	2	2	1	<0.001
Peptic ulcer [%]	5	5	6	6	6	<0.001
Cancer	4	3	8	11	12	<0.001
Laboratory Values						
Baseline serum creatinine (mg/dL) (mean±SD)	8.13±3.39	8.29±3.45	7.02±2.71	6.89±2.57	6.61±2.49	<0.001
Baseline serum albumin (g/dL) (mean±SD)	3.86±0.66	3.86±0.67	3.84±0.59	3.86±0.60	3.90±0.52	0.04

Age range (year)	ALL	15-<65	65-<70	70-<75	75	p-for trend
PRA (%) mean [median, 25th-75th percentile] PRA = 0% (n) [%]	13.7 (0, 0, 11) 72432 [50]	13.9 (11, 0, 60) 64232 [50]	12.4 (10, 0, 49) 5209 [52]	11.1 (9, 0, 41) 2266 [53]	9.7 (7, 0, 33) 725 [56]	<0.001 <0.001

Abbreviations:

BMI: Body Mass Index.

COPD: Chronic obstructive pulmonary disease

HLA: Human leukocyte antibody

PRA: panel reactive antibody (last value prior to transplant).

Graft failure: Re-initiation of dialysis treatment or re-transplantation.

Imminent graft failure: estimated glomerular filtration rate (eGFR) <30 mL/min/1.73 m² using modified diet in renal disease (MDRD) equation, provided there was no eGFR >40 mL/min/1.73 m² reported afterward.

Table 2

Hazard ratios (95% confidence intervals) of **all-cause mortality** using Cox regression analyses

	Unadjusted		Adjusted	
	HR (95% CI)	P-Value	HR (95% CI)	P-Value
Age 65–<70 years (N = 10101)				
Female vs. male recipient (ref.)	0.86 (0.79–0.93)	<0.001	0.88 (0.81–0.95)	0.001
Recipient Race- Caucasian	1.00 (0.92–1.08)	0.93	1.07 (0.98–1.17)	0.11
Recipient Race- Hispanic	0.91 (0.80–1.04)	0.16	0.83 (0.73–0.95)	0.006
Recipient Race- Asian	0.64 (0.51–0.80)	<0.001	0.63 (0.50–0.80)	<0.001
Recipient Race- Black	1.18 (1.07–1.30)	<0.001	1.16 (1.05–1.28)	0.004
BMI (kg/m ²) (>30 vs. ≤30 [ref.])	1.14 (1.03–1.25)	0.01	1.03 (0.93–1.14)	0.53
Diabetic vs. non-diabetic (ref.)	1.49 (1.38–1.62)	<0.001	1.45 (1.33–1.57)	<0.001
Hypertensive vs. non-hypertensive (ref.)	0.97 (0.88–1.70)	0.55	0.93 (0.84–1.03)	0.14
Angina vs. non-Angina (ref.)	1.32 (1.21–1.44)	<0.001	1.20 (1.09–1.31)	<0.001
Age 70–<75 years (N = 4271)				
Female vs. male recipient (ref.)	0.81 (0.71–0.91)	<0.001	0.78 (0.69–0.89)	<0.001
Recipient Race- Caucasian	0.92 (0.81–1.04)	0.19	0.97 (0.84–1.11)	0.64
Recipient Race- Hispanic	0.78 (0.62–0.99)	0.04	0.73 (0.57–0.92)	0.008
Recipient Race- Asian	0.90 (0.64–1.25)	0.52	0.89 (0.63–1.24)	0.48
Recipient Race- Black	1.36 (1.17–1.59)	<0.001	1.35 (1.14–1.59)	<0.001
BMI (kg/m ²) (>30 vs. ≤30 [ref.])	1.16 (0.99–1.36)	0.07	1.06 (0.90–1.26)	0.46
Diabetic vs. non-diabetic (ref.)	1.453 (1.28–1.65)	<0.001	1.32 (1.16–1.51)	<0.001
Hypertensive vs. non-hypertensive (ref.)	1.058 (0.91–1.23)	0.46	1.00 (0.86–1.16)	1.00
Angina vs. non-Angina (ref.)	1.303 (1.14–1.50)	<0.001	1.17 (1.01–1.36)	0.04
Age 75 years (N = 1295)				
Female vs. male recipient (ref.)	0.91 (1.072–1.15)	0.42	0.86 (0.67–1.09)	0.21
Recipient Race- Caucasian	1.14 (0.88–1.48)	0.33	1.21 (0.92–1.59)	0.18
Recipient Race- Hispanic	0.71 (0.45–1.12)	0.14	0.68 (0.43–1.08)	0.10
Recipient Race- Asian	0.69 (0.34–1.42)	0.32	0.63 (0.30–1.31)	0.22
Recipient Race- Black	1.09 (0.78–1.54)	0.61	1.07 (0.75–1.54)	0.70
BMI (kg/m ²) (>30 vs. ≤30 [ref.])	1.61 (1.18–2.20)	0.003	1.50 (1.09–2.07)	0.01
Diabetic vs. non-diabetic (ref.)	1.38 (1.09–1.77)	0.009	1.39 (1.08–1.79)	0.01
Hypertensive vs. non-hypertensive (ref.)	1.15 (0.87–1.53)	0.3242	1.17 (0.88–1.57)	0.2737
Angina vs. non-Angina (ref.)	1.023 (0.80–1.31)	0.8603	0.95 (0.73–1.24)	0.7015

BMI: Body mass Index
 HR: Hazard Ratio
 CI: Confidence Interval
 Ref: Reference group