

UCLA
Contemporary Music Score Collection

Title

Three walls

Permalink

<https://escholarship.org/uc/item/8qv3j4rc>

Author

Shin, Sam

Publication Date

2020

Sam Shin

Three walls

for mixed quintet:

*clarinet in B \flat (doubling bass clarinet), trombone,
vibraphone and percussion, piano, and violin*

December 2018, ca. 10'

Three walls

Inspired by the precise and imposing Sol Lewitt wall paintings at MASS MoCA.

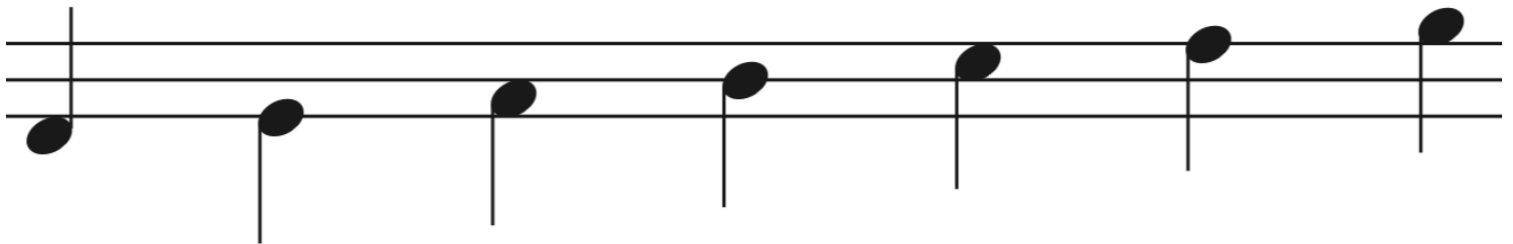
Vibraphone: play with mallets

"+" indicates dead stroke

m. 60: scrape cymbal

with triangle beater

Percussion: play with sticks



snare

low
wood block

low-mid
tom

mid
wood block

high-mid
tom

high
wood block

suspended
crash cymbal

Wall one: 413

♩ = 80

Clarinet in B \flat *mf*

Trombone *f*

Vibraphone *mf* *mp*

Piano *f*

Violin *mp*

4

B \flat Cl. *f* *mp* **A**

Tbn. *p* *f* *p*

Vib. *p* *f* *p* *pp*

Pno. *p* *f* *p* *pp*

Vln. *p* *f* *mp*

8

B♭ Cl. *mp* *f* *mp*

Tbn. *mp* *mf* *mp*

Vib. *p* *mp* *mf* *p*

Pno. *p* *mp* *mf* *p*

Vln. *mf* *f* *mp*

12

B♭ Cl. *p* *f* *subito p* *f* **B**

Tbn. *p* *f* *subito p* *f*

Vib. *f* *mp* *f*

Pno. *mf* *f* *subito p* *f*

Vln. *p* *f*

16

B \flat Cl. *mf* *mp* *f*

Tbn. *mf* *mp* *f*

Vib. *mf* *mp* *f*

Pno. *f*

Vln. *mp* *f*

20

B \flat Cl. *mf* *f*

Tbn. *mf* *mp* *f*

Vib. *mf* *mp* *mf*

Pno. *f*

Vln. *mf* *mp* *mf* *f*

24 C

B♭ Cl. *mp* *p* *f*

Tbn. *mp* *p* *f*

Vib. *mp* *mf*

Pno. *mp* *mf*

Vln. *mp* *p* *f*

28

B♭ Cl. *ff* *f* *p* *f* *p* *f* *p*

Tbn. *ff* *f* *p* *f* *p* *f* *p*

Vib. *ff* *mf*

Pno. *ff* *mf*

Vln. *ff* *f* *p* *f* *p* *f* *p*

32

B♭ Cl.

Tbn.

Vib.

Pno.

Vln.

f *p* *ff* *f* *p* *mp* *mf* *f*

f *p* *ff* *f* *p* *mp* *mf* *f*

to percussion

f *p* *mp* *mf* *f*

ff *f* *p* *mp* *mf* *f*

f *p* *ff* *f* *p* *mp* *mf* *f*

D

B♭ Cl.

Tbn.

Perc.

Pno.

Vln.

p *mp* *mf* *mp* *mf*

p *p* *mf* *p* *mf*

mf *mp* *p* *mf*

p

40

B♭ Cl. *f* *mp*

Tbn. *f* *mp*

Perc. *f*

Pno. *mp*

Vln. *mf* *f* *mp* *mf*

43

B♭ Cl. *f*

Tbn. *mp* *f* *mp* *f*

Perc.

Pno. *f* *mp*

Vln. *f* *mp* *f*

46

B♭ Cl. *mp*

Tbn. *mf*

Perc.

Pno.

Vln. *mp*

F

B♭ Cl. *p* *f*

Tbn. *p* *mf*

Perc. *mp*

Pno. *mp* *mf* *mp* *mf*

Vln. *f*

54

B \flat Cl. *mf* *pp*

Tbn. *mp*

Perc.

Pno. *mp*

Vln. *mf*

58

B \flat Cl. *mp* *p* **G** = 120

Tbn. *p*

Perc. *mp* *p* scrape ord.

Pno. *mp* *p*

Vln. *p* *pp*

62

B♭ Cl.

Tbn.

Perc.

Pno.

Vln.

p *mp*

p

mp *mf*

mp *mf*

p *mp*

66

B♭ Cl.

Tbn.

Perc.

Pno.

Vln.

mf

mp

f

f

mf

70

B♭ Cl.

Tbn.

Perc.

Pno.

Vln.

mf

74

B♭ Cl.

Tbn.

Perc.

Pno.

Vln.

ff

mp

ff *mf*

H

78

B \flat Cl. *mf* *f*

Tbn. *mf*

Perc.

Pno. *mf*

Vln.

82

B \flat Cl. *p* *f* *p*

Tbn. *f* *mp* *f* *p*

Perc. *mp* *f*

Pno. *f* *mf*

Vln. *f* *mf*

86

B \flat Cl. *mp*

Tbn. *mp*

Perc. *mf*

Pno. *mp*

Vln. *mp*

91

B \flat Cl. *f* *ff*

Tbn. *f* *ff*

Perc. *ff* *8va*

Pno. *f* *ff*

Vln. *f* *ff*

Wall two: 289

♩ = 66

Bass Clarinet

Trombone

mf

p

mf

mp

Vibraphone

mp

Piano

Violin

102

B. Cl.

mp

Tbn.

p

Vib.

p

Pno.

Vln.

mp < *mf*

> *mp*

B. Cl. *mp*

Tbn. *mp*

Vib. *p*

Pno. *mp*

Vln. *mp* > *p* *mp*

J

B. Cl.

Tbn. *mf* *gliss.*

Vib. *mp*

Pno. *mp*

Vln. *mf* *gliss.*

119

B. Cl. *mp*

Tbn. *mp* *p*

Vib.

Pno.

Vln. *mp* *< mf* *> mp* *> p*

K

124

B. Cl. *mp*

Tbn. *p* *mp*

Vib. *p* *mp*

Pno. *p* *mp*

Vln.

B. Cl. *mf* *f* *mf*

Tbn. *f* *mf*

Vib. *mf* *f* *mf*

Pno. *mf* *f* *mf*

Vln. *f* *mf*

B. Cl. *mp* *p*

Tbn. *mp* *p*

Vib. *mp* *p*

Pno. *mp* *p*

Vln. *mp* *p*

L

133

B. Cl.

Tbn.

Vib.

Pno.

Vln.

mp

mp

mp

mp

mp

gliss. (#)

135

B. Cl.

Tbn.

Vib.

Pno.

Vln.

mf

mf

mf

mf

mf

mf

B. Cl.
Tbn.
Vib.
Pno.
Vln.

B. Cl.
Tbn.
Vib.
Pno.
Vln.

137

accel.-----

a tempo
overblow

M

Sva

f *mp*

flz.

f *mp*

f

Sva-----

f

overpressure

f *mf*

141

B. Cl.

Tbn.

Vib.

Pno.

Vln.

Detailed description: This system of musical notation covers measures 141 to 145. It features five staves: B. Cl. (Bass Clarinet), Tbn. (Tuba), Vib. (Vibraphone), Pno. (Piano), and Vln. (Violin). The B. Cl. and Tbn. parts are in bass clef and show dynamic markings of *p*, *mf*, and *p* with hairpins, and *mf* at the end of the system. The Vib. part is in treble clef with markings of *mp*, *mf*, *mp*, *p*, and *mf*. The Pno. part is in grand staff with markings of *mf* and *f*. The Vln. part is in treble clef with markings of *p*, *mf*, *p*, and *f*.

146

B. Cl.

Tbn.

Vib.

Pno.

Vln.

Detailed description: This system of musical notation covers measures 146 to 150. It features five staves: B. Cl., Tbn., Vib., Pno., and Vln. The B. Cl. and Tbn. parts are in bass clef with markings of *mp* and *p*. The Vib. part is in treble clef with markings of *mp* and *p*. The Pno. part is in grand staff with markings of *mf*, *mp*, and *p*. The Vln. part is in treble clef with markings of *mf*, *mp*, and *p*. A *Sva* (Sustained) marking is present above the Vib. staff in measure 150.

Wall three: 439

♩ = 80

Clarinet in B \flat

Trombone

Percussion

Piano

Violin

155

B \flat Cl.

Tbn.

Perc.

Pno.

Vln.

159

B♭ Cl. *mp* *p* *mp*

Tbn. *mp* *p* *mp*

Perc. *mf*

Pno. *mf*

Vln. *mp* *p* *mf*

163

B♭ Cl. *mf* *p*

Tbn. *mf* *p*

Perc. *f* *p* *mp* *f*

Pno. *p* *mp* *sfz*

Vln. *f* *p*

B♭ Cl. *p* *pp* *rit. . .*

Tbn. *p* *pp*

Perc. *mp* *mf* *mp*

Pno. *mp* *mf* *mp*

Vln. *p* *pp*

○ *a tempo*

B♭ Cl. *mp* *f* *p*

Tbn. *mf* *f* *p*

Perc. *f* *p*

Pno. *p* *pp* *mp* *f* *p*

Vln. *f* *p*

174

B♭ Cl. *f p f p f mf*

Tbn. *f p f p f mf*

Perc. *f p f p f mf*

Pno. *f p f p f mf*

Vln. *f p f p f mf*

178

rit. ----- **P** a tempo

to bass clarinet

B♭ Cl. *mp p p mp p mp*

Tbn. *mp p p mp p mp*

to vibraphone

Perc. *mp p pp mf*

Pno. *mp p pp mf*

senza ped.

Vln. *mp p pp mf pizz. f*

B. Cl. *p* *mp* *p* *mp* *p* *mp*

Tbn. *p* *mp* *p* *mp* *p* *mp*

Vib.

Pno.

Vln.

B. Cl. *p* *mp* *pp* *mp* *f*

Tbn. *p* *mp* *pp* *mp* *f*

Vib. *mp* *f*

Pno. *f*

Vln. *f*

sempre ped. ad lib

arco

192

B. Cl. *mp* *f* *mf* *mp*

Tbn. *mp* *f* *mf* *mp*

Vib. *mp* *f* *mf* *mp*

Pno. *mf* *mp*

Vln. *f* *mf* *mp*

197

B. Cl. *f*

Tbn. *f*

Vib. *f*

Pno. *f*

Vln. *f*

R

B. Cl. 
Tbn. 
Vib. 
Pno. 
Vln. 

B. Cl. 
Tbn. 
Vib. 
Pno. 
Vln. 

206 S

B. Cl. *f* *mp*

Tbn. *f* *mp*

Vib. *mf* *f*

Pno. *mf* *f* *mf*

Vln. *mp* *f* *mp* *f*

209

B. Cl. *f* *p* *f* *p*

Tbn. *f* *p* *f* *p*

Vib. *mp* *p* *f* *p*

Pno. *f* *mp* *f* *p* *f* *p*

Vln. *p* *p* *f* *p*

28
212

T

rit.

a tempo

B. Cl. *f* *mp*

Tbn. *f* *p*

Vib. *f*

Pno. *fp*

Vln. *f*

215

B. Cl. *f*

Tbn. *f*

Vib. *mf* *f*

Pno. *f*

Vln. *f*