

# UCSF

## UC San Francisco Previously Published Works

### Title

Multicohort Analysis Identifies Monocyte Gene Signatures to Accurately Monitor Subset-Specific Changes in Human Diseases

### Permalink

<https://escholarship.org/uc/item/8s29b157>

### Authors

Vallania, Francesco  
Zisman, Liron  
Macaubas, Claudia  
et al.

### Publication Date

2021

### DOI

10.3389/fimmu.2021.659255

Peer reviewed



# Multicohort Analysis Identifies Monocyte Gene Signatures to Accurately Monitor Subset-Specific Changes in Human Diseases

OPEN ACCESS

**Edited by:**

Guochang Hu,  
University of Illinois at Chicago,  
United States

**Reviewed by:**

Jo A. Van Ginderachter,  
Vrije University Brussel, Belgium  
Darawan Rinchai,  
Sidra Medicine, Qatar

**\*Correspondence:**

Purvesh Khatri  
pkhatri@stanford.edu  
Elizabeth D. Mellins  
mellins@stanford.edu

**†Present address:**

Narendiran Rajasekaran,  
Department of Chemistry and  
Biochemistry, Northern Arizona  
University, AZ, United States

‡These authors have contributed  
equally to this work

**Specialty section:**

This article was submitted to  
Inflammation,  
a section of the journal  
Frontiers in Immunology

**Received:** 27 January 2021

**Accepted:** 26 April 2021

**Published:** 14 May 2021

**Citation:**

Vallania F, Zisman L, Macaubas C,  
Hung S-C, Rajasekaran N, Mason S,  
Graf J, Nakamura M, Mellins ED and  
Khatri P (2021) Multicohort Analysis  
Identifies Monocyte Gene Signatures  
to Accurately Monitor Subset-Specific  
Changes in Human Diseases.  
*Front. Immunol.* 12:659255.  
doi: 10.3389/fimmu.2021.659255

**Francesco Vallania**<sup>1,2</sup>, **Liron Zisman**<sup>1,2,3</sup>, **Claudia Macaubas**<sup>3</sup>, **Shu-Chen Hung**<sup>3</sup>,  
**Narendiran Rajasekaran**<sup>3†</sup>, **Sonia Mason**<sup>3</sup>, **Jonathan Graf**<sup>4</sup>, **Mary Nakamura**<sup>4</sup>,  
**Elizabeth D. Mellins**<sup>3\*</sup> and **Purvesh Khatri**<sup>1,2\*‡</sup>

<sup>1</sup> Institute for Immunity, Transplantation and Infection, School of Medicine, Stanford University, Stanford, CA, United States,

<sup>2</sup> Center for Biomedical Research, Department of Medicine, School of Medicine, Stanford University, Stanford, CA,

United States, <sup>3</sup> Department of Pediatrics, Program in Immunology, School of Medicine, Stanford University, Stanford, CA,

United States, <sup>4</sup> Department of Medicine, University of California San Francisco, San Francisco, CA, United States

Monocytes are crucial regulators of inflammation, and are characterized by three distinct subsets in humans, of which classical and non-classical are the most abundant. Different subsets carry out different functions and have been previously associated with multiple inflammatory conditions. Dissecting the contribution of different monocyte subsets to disease is currently limited by samples and cohorts, often resulting in underpowered studies and poor reproducibility. Publicly available transcriptome profiles provide an alternative source of data characterized by high statistical power and real-world heterogeneity. However, most transcriptome datasets profile bulk blood or tissue samples, requiring the use of *in silico* approaches to quantify changes in cell levels. Here, we integrated 853 publicly available microarray expression profiles of sorted human monocyte subsets from 45 independent studies to identify robust and parsimonious gene expression signatures, consisting of 10 genes specific to each subset. These signatures maintain their accuracy regardless of disease state in an independent cohort profiled by RNA-sequencing and are specific to their respective subset when compared to other immune cells from both myeloid and lymphoid lineages profiled across 6160 transcriptome profiles. Consequently, we show that these signatures can be used to quantify changes in monocyte subsets levels in expression profiles from patients in clinical trials. Finally, we show that proteins encoded by our signature genes can be used in cytometry-based assays to specifically sort monocyte subsets. Our results demonstrate the robustness, versatility, and utility of our computational approach and provide a framework for the discovery of new cellular markers.

**Keywords:** Systems Immunology, Gene signatures, monocyte subsets, gene expression, flow cytometry markers

## HIGHLIGHTS

- By integrating public expression data, we have developed gene signatures to monitor monocyte subset levels in human gene expression datasets
- Our signatures are accurate irrespective of biological and technical confounders and can be used as new markers in cytometry experiments

## INTRODUCTION

Monocytes, together with macrophages and dendritic cells (DCs), are part of the mononuclear phagocyte system. Monocytes and monocyte-derived cells play important roles in the regulation of inflammation, both as precursors as well as effector cells (1–3). Monocytes are a heterogeneous group of cells, and since Passlick and colleagues showed that the combined use of CD16 (FcγRIII) and the LPS co-receptor CD14 identified distinct subsets of monocytes in humans (4), three major subsets have been defined, as well as their murine counterparts. These subsets are: a classical (CD14<sup>+</sup>CD16<sup>-</sup> in humans and Ly6C<sup>hi</sup> in mice), a nonclassical (CD14<sup>-</sup>CD16<sup>+</sup> in humans and Ly6C<sup>lo</sup> in mice), and an intermediate subset (CD14<sup>+</sup>CD16<sup>+</sup> in humans and Ly6C<sup>+</sup>Treml4<sup>+</sup> in mice) (5–7). Although plasticity is an important characteristic of monocytes (8, 9), surface marker expression and functional studies have shown each monocyte subset to be functionally distinct. Consistent with this, transcriptome analyses of sorted monocyte subsets have revealed different gene expression profiles ascribed to each subset (7, 10, 11). Classical monocytes, around 90% of total monocytes in humans, are efficient phagocytic cells important for the initiation of inflammatory response, with high expression of scavenger and chemokine receptors, and elevated cytokine production (12, 13). Earlier work on nonclassical monocytes, around 5% of total monocytes, emphasized their capacity to produce inflammatory cytokines, especially TNF (14). However, recent work has shown that nonclassical monocytes are also involved in immune surveillance of the vasculature and have pro- and anti-inflammatory functions (9, 15). Intermediate monocytes are considered efficient antigen presenting cells (12). Consequently, altered frequencies of different subsets have been associated with inflammatory conditions, such as infections and autoimmune disorders including lupus, rheumatoid arthritis, and inflammatory bowel disease (13, 16–19), and more recently, COVID-19 (20, 21).

Dissecting the contribution of different monocyte subsets to disease is currently limited by samples and cohorts that can be profiled experimentally using cytometry and cell-staining-based assays. These limitations often result in underpowered studies and, consequently, poor reproducibility (22). Public transcriptomes provide an alternative source of data characterized by high statistical power and real-world biological, clinical, and technical heterogeneity, resulting in

increased reproducibility (23–30). However, most transcriptome datasets profile bulk blood or tissue samples, requiring the use of *in silico* approaches to quantify changes in the levels of specific cell types (31–36).

Here, we integrated 853 publicly available microarray expression profiles of sorted human monocyte subsets from 45 independent studies to identify robust and parsimonious gene expression signatures, consisting of 10 genes specific to each subset. These signatures, although derived using only datasets profiling healthy individuals, maintain their accuracy independent of the disease state in an independent cohort profiled by RNA-sequencing. Furthermore, we demonstrate that these signatures are specific to monocyte subsets compared to other immune cells such as B, T, dendritic cells (DCs) and natural killer (NK) cells. This increased specificity results in estimated monocyte subset levels that are strongly correlated with cytometry-based quantification of cellular subsets. Consequently, we show that these monocyte subset-specific signatures can be used to quantify changes in monocyte subsets levels in expression profiles from patients in clinical trials. Finally, we show that proteins encoded by our signature genes can be used in cytometry-based assays to specifically sort monocyte subsets. Our results demonstrate the robustness, versatility, and utility of our computational approach and provide a framework for the discovery of new cellular markers.

## METHODS

### Public Data Collection, Annotation, and Analysis

Unless otherwise noted, we obtained all gene expression data used in this study from the Gene Expression Omnibus (GEO) database ([www.ncbi.nlm.nih.gov/geo/](http://www.ncbi.nlm.nih.gov/geo/)) using the MetaIntegrator R package from CRAN (35) (**Supplemental Table 1**). All data was manually annotated using the available expression metadata. We normalized each expression dataset using quantile normalization and computed gene-level expression from probe-level data using the original probe annotation files available from GEO as described previously (31). We performed co-normalization, effect size calculation, and gene ranking as previously described (31). We performed gene set selection to identify parsimonious gene signatures using the following criteria: (a) we ranked genes based on effect size (b) we filtered genes that were up-regulated in the cell subset of interest (c) we filtered genes with a mean expression difference of 32 expression units or above (d) We selected the top 10 genes for each subset. We chose these criteria to increase the likelihood of successful independent experimental validation of each marker gene. Signature scores were computed by calculating the geometric mean of expression levels of the signature genes in the dataset of interest, as described previously (17–23). All follow-up analyses were performed using R (v. 3.4.1). Analysis scripts are included as **Supplemental Materials** and available online here (<https://www.biorxiv.org/content/biorxiv/early/2020/12/22/2020.12.21.423397/DC1/embed/media-1.gz?download=true>).

## Pathway Analysis

We performed gene set enrichment analysis (GSEA) as previously described (37). Briefly, for each monocyte subset we computed an effect size vector across all genes as described above. We then applied GSEA to the effect size vectors by comparing to MSigDB, a collection of molecular signatures derived from pathway analysis databases and published molecular data (<http://software.broadinstitute.org/gsea/msigdb/index.jsp>). We corrected for multiple hypothesis testing across all pathways using Benjamini-Hochberg's FDR correction. We performed this analysis using the 'fgsea' and 'MSigDB' packages in R.

## Samples

For the monocyte sorting and expression profiling, de-identified blood samples from 3 healthy adult donors were obtained from the Stanford Blood Center (SBC) and from 3 Rheumatoid Arthritis (RA) patients at UCSF (**Supplemental Table 6**). For the flow cytometry, 8 de-identified blood samples from healthy adults from the SBC, and 12 samples from patients with Systemic Juvenile Idiopathic Arthritis from Lucille Packard Children's Hospital were tested (**Supplemental Table 7**). The work was conducted with approval from the Administrative Panels on Human Subjects Research from Stanford University and UCSF.

## Fluorescent-Activated Cell Sorting of Monocytes

Venous blood from healthy controls and RA patients was collected in heparin tubes (BD Vacutainer, BD, Franklin Lakes, NJ); peripheral blood mononuclear cells (PBMCs) were isolated by density gradient centrifugation using LSM Lymphocyte Separation Medium (MP Biomedicals, Santa Ana, CA). PBMCs were enriched for total monocytes using the Pan Monocyte Isolation Kit (Miltenyi Biotec, San Diego, CA). Enriched monocytes were stained for surface antigens as previously described (38). Briefly, cells were stained with LIVE/DEAD Fixable Aqua Dead Cell Stain (Life Technologies, Eugene, OR). Antibodies against CD3, CD19, CD56, and CD66b, all labeled with PerCPy5.5, were used to exclude T cells, B cells, NK cells, and neutrophils respectively ('dump'); antibodies against CD1c and CD141 were used to identify and exclude dendritic cells. Antibodies against HLA-DR-APC Cy7 (clone L243), CD14-Pacific Blue (clone M5E2), and CD16-PE Cy7 (clone 3G8) were used to identify monocytes and their three subsets. All antibodies are from Biolegend (San Diego, CA). Fluorescence minus one (FMO) were used as control for gating cell populations. Sterile flow cytometry sorting was performed using a BD FACSAria II (BD Biosciences) at the Stanford Shared FACS Facility (SSFF) using a 100 $\mu$ m nozzle, yielding monocyte subset purity of over 98% (verified using the classical subset). Sorted cells were collected into polypropylene tubes containing RPMI media (RPMI+10% Heat inactivated Fetal Bovine Serum +1% Penicillin Streptomycin), counted and spun down for total RNA extraction.

## Total RNA Extraction and RNA-Seq

Total RNA extraction was performed using the Qiagen RNeasy Micro kit (Qiagen, Germantown, MD). Total RNA

concentration and quality were determined using a NanoDrop 1000 Spectrophotometer (ThermoFisher Scientific, Waltham, MA) and a BioAnalyzer 2100 (Agilent Technologies, Santa Clara, CA) at the Stanford PAN Facility. RNA sequencing (RNA-seq) was performed by BGI Americas (Cambridge, MA). The total RNA was enriched for mRNA using oligo(dT), and the RNA was fragmented. cDNA synthesis was performed using random hexamers as primers. After purification and end reparation, the short fragments were connected with adapters. The suitable fragments were selected for PCR amplification. The library was then sequenced using Illumina HiSeq 2000.

## Gene Expression by Real Time RT-PCR

Total RNA from sorted monocytes was converted into cDNA using the iScript Reverse Transcription Supermix (Bio-Rad, Hercules, CA), and cDNA was amplified with SsoAdvanced<sup>TM</sup> SYBR<sup>®</sup> Green Supermix (Bio-Rad); reactions were performed in a CFX384 real time PCR instrument (Bio-Rad). Primers sequences were obtained from qPrimerDepot (<http://primerdepot.nci.nih.gov/>), synthesized at the Stanford University Protein and Nucleic Acid Facility (PAN) and validated in our laboratory as previously described (39) using unsorted total monocytes. Primers are listed on **Supplemental Table 8**. Relative starting amounts of each gene of interest were determined using the delta delta Cq method.

## Flow Cytometry

PBMCs were isolated by density gradient centrifugation; healthy donors cells were treated with ACK lysing buffer (ThermoFisher) to lyse red blood cells (RBCs). Cells were frozen in 10% DMSO/10% heat inactivated (HI) human AB serum (Corning) for later flow cytometry staining. Frozen PBMC were thawed in RPMI 1640 with 10% HI AB human serum. The cells were washed with DPBS before staining with LIVE/DEAD Aqua (1:1000 dilution in PBS, ThermoFisher Scientific) for 10 min at room temperature. Cells were then washed with flow buffer (DPBS supplemented with 1% BSA and 0.02% NaN<sub>3</sub>) before blocking for nonspecific binding with flow buffer containing 5% heat inactivated AB serum (Corning), 5% goat serum (ThermoFisher Scientific), 0.5% mouse serum, and 0.5% rat serum for 15 min on ice. After blocking, cells were stained on ice for 30 min with the following fluorochrome-conjugated antibodies in a 12-color staining combination: APC anti-IL17RA (clone W15177A, Biolegend) at 1:50; APC-Vio770anti-CD32 (clone 2E1, Miltenyi Biotec) at 1:100; FITC anti-CD16 (clone 3G8, Biolegend) at 1:20; PerCP/Cy5.5 anti-CD114 (cloneLMM741, Biolegend) at 1: 20; Brilliant Violet 605 anti-Siglec 10 (clone 5G6, BD) at 1:20; Brilliant Violet 785 anti-CD14 (clone M5E2, Biolegend)at 1:50; PE anti-GPR183 (clone SA313E4, Biolegend)at 1:20; PE-CF594 anti-CD13 (clone VM15, BD)at 1: 20; PE/Cy7 anti-HLA-DR (clone L243, Biolegend) at 1:50; BUV395 anti-CD36 (clone CB38, BD) at 1:50. Alexa 700 dump channel includes anti-CD3 (clone UCHT1, Biolegend) at 1:300, anti-CD19 (clone HIB19, Biolegend) at 1:300, anti-CD56 (clone HCD56, Biolegend)at 1:300, anti-CD1c (clone L161, Biolegend)at 1:150, anti-CD66b (clone G10F5, Biolegend) at 1:150, anti-CD141 (clone 501733, Novus Biologicals) at 1:150.

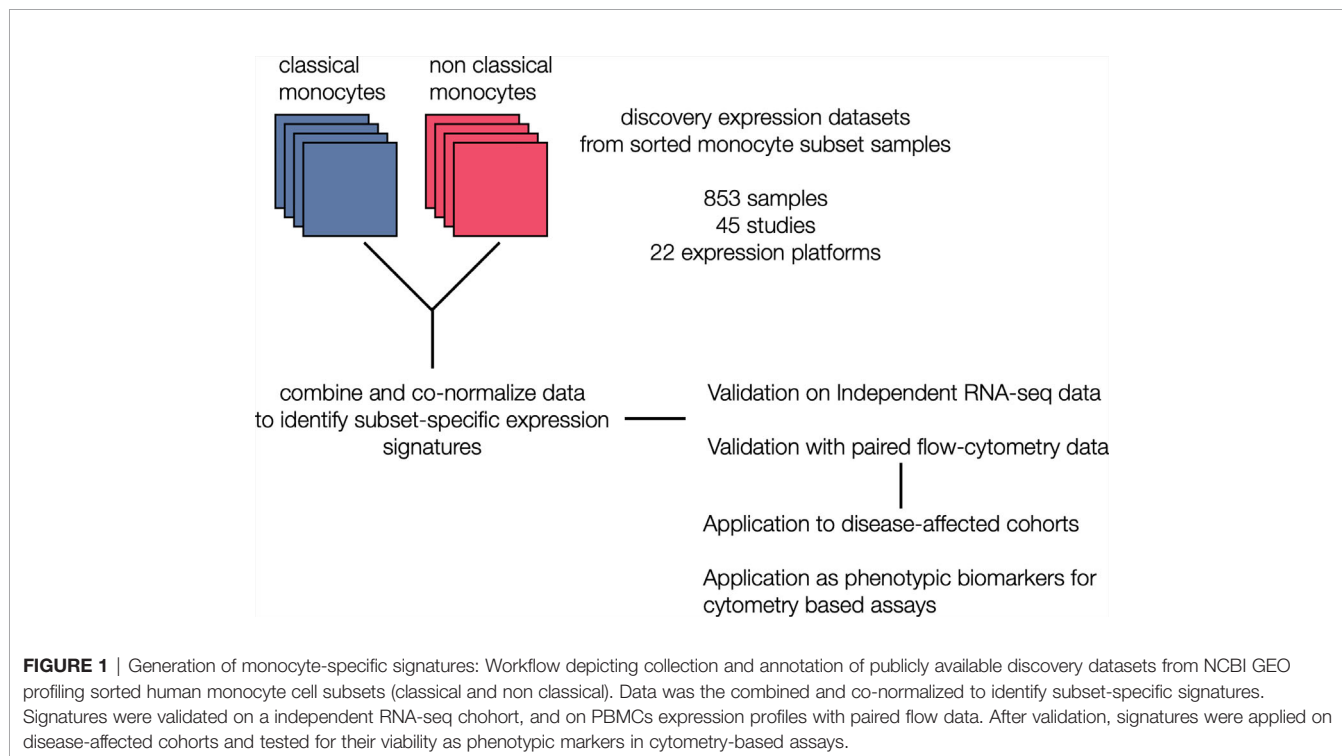
After wash, cells were fixed with 200  $\mu$ l fixation buffer (Cytofix, BD Biosciences) followed by 2 washes with flow buffer and resuspension in 200  $\mu$ l flow buffer. Cells were analyzed on a Becton Dickinson LSRII Analyzer at Stanford Shared FACS facility. Data were analyzed using FlowJo version 10 (FlowJo LLC).

## RESULTS

### Robust Subset-Specific Monocyte Signatures From Heterogeneous Gene Expression Datasets

We hypothesized that integrating heterogeneous transcriptome profiles of sorted human monocyte subsets across multiple cohorts would allow us to identify robust subset-specific gene expression signatures. To test this hypothesis, we collected and annotated 853 publicly available gene expression profiles of sorted human monocytes across 45 studies. These datasets spanned 22 microarray platforms for transcriptome profiling of samples acquired from healthy donors (**Supplemental Table 1**). After sample annotation, we co-normalized and integrated all expression data as previously described (31) (**Figure 1**). For each gene, we calculated effect sizes as Hedge's  $g$  between the samples from a cell subset of interest compared to all other samples. We then characterized the underlying biological functions represented within the transcriptional data for each monocyte subset by performing Gene Set Enrichment Analysis (GSEA) (see *Methods*). We identified 91 significantly enriched pathways in classical monocytes and 1737 for the nonclassical subset

(FDR < 5%). Our analysis revealed pathways associated with known functions of classical monocytes, such as wound healing, cytoskeleton remodeling, and phagocytosis, positively enriched in the classical subset (**Supplemental Table 2**). In contrast, our analysis of the nonclassical subset revealed categories of disease-associated gene expression changes, cell cycle, and metabolism (**Supplemental Table 3**). Notably, our most significant enrichment consisted of a gene signature previously reported to be down-regulated in Alzheimer's Disease (pathway: 'BLALOCK\_ALZHEIMERS\_DISEASE\_DN',  $p = 9.9e-6$ ). This is in agreement with previous reports showing that nonclassical monocytes are found to be reduced in patients affected by Alzheimer's (40). These results suggest that our data integration strategy allowed us to preserve and capture previously described biological functions of monocyte subsets irrespective of technical and biological confounders within our collection of datasets. We then applied our multi-cohort analysis framework to identify robust cell-subset specific genes (see *Methods*) (23, 31, 41). We considered classical and nonclassical monocyte subsets for our analysis because of their functional importance and the number of available datasets for each subset that could be integrated into our analysis ( $n \geq 4$ ). There were 30 genes significantly over-expressed in classical monocytes and 268 genes over-expressed in nonclassical monocytes. We created classical and nonclassical monocyte specific gene signatures using the top 10 genes for each monocyte subset that were consistently elevated within the subset of interest across all our discovery cohorts (**Figures 2A, B** and **Supplemental Table 4**). Among the classical signature genes, five have been previously associated with the classical monocytes in a single-cell RNA-seq study of healthy



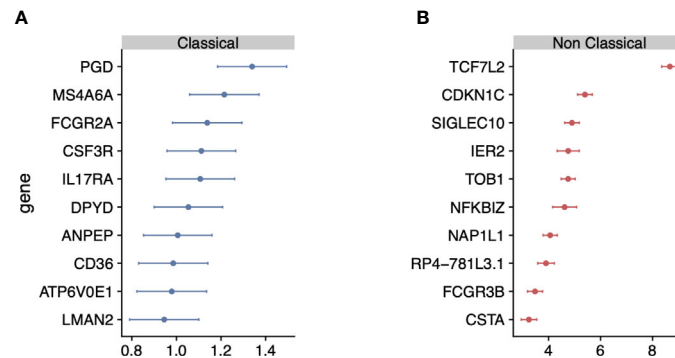


monocytes, and *SIGLEC10* was identified in non-classical monocytes as well (42).

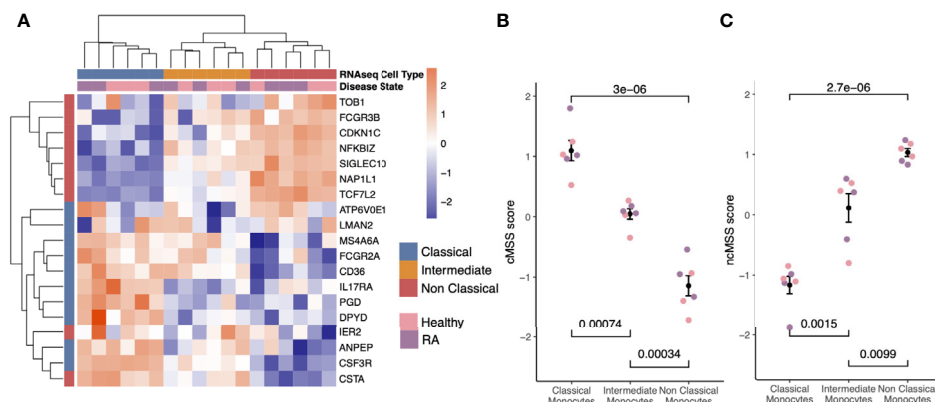
## Monocyte Signatures Are Robust in an Independent Validation Cohort and Independent of Disease State

Although the gene signatures for classical and non-classical monocytes were derived by integrating independent datasets with substantial technical and biological heterogeneity, they only included healthy human subjects. We have previously shown that the accuracy of cell-type specific genes can be significantly affected by disease-induced changes in gene expression (31). Therefore, we investigated whether these monocyte subset-specific signatures are confounded by disease state in an independent cohort of healthy controls (n=3) and patients with rheumatoid arthritis (RA; n=3). We sorted monocyte subsets (classical, nonclassical, and intermediate) from peripheral blood samples and measured their transcriptomic profile using RNA-seq (see *Materials and Methods*).

Hierarchical clustering of the RNA-seq data using all genes in our monocyte subset-specific signatures accurately separated samples according to their cell subset identity, but not by their disease status (**Figure 3A**). Importantly, the signature genes showed variable expression levels in the intermediate monocytes, suggesting that the intermediate monocytes may represent a transitional cellular state rather than a stable state. All genes except two from the non-classical monocyte signature, (*IER2* and *CTSA*), were correctly over-expressed in their respective subset, and most (15 of 20) were independently confirmed by RT-PCR in sorted monocytes from healthy controls and patients with RA (**Supplemental Figure 1**). Next, we defined a classical monocyte subset score (cMSS) of a sample as a geometric mean of expression of genes in classical monocyte-specific signature, and nonclassical monocyte subset score (ncMSS) of a sample as a geometric mean of expression of genes in nonclassical monocyte-specific signature. We computed cMSS and ncMSS for each sample. In the independent cohort of healthy controls and patients with RA, we found that cMSS was



**FIGURE 2** | Identification of monocyte-subset specific gene expression signature: **(A)** Forest plots displaying genes specific to the classical monocyte subset in the discovery cohort. Dots indicate *Hedge's g* effect size values and bars correspond to their standards errors. **(B)** Same as **(A)** but for non classical subset.



**FIGURE 3** | Subset-specific genes are independent of disease state: **(A)** Heat-map showing expression of subset signature genes (rows) on sorted human monocytes (columns) from independent RNA-seq validation. Samples are labeled by cell type and disease state. **(B)** Bee-swarm plots displaying classical monocyte subset score (cMSS) scores across monocyte subsets and disease condition. Significance was computed by t-test. **(C)** Same as **(B)** for non-classical monocyte subset score (ncMSS) scores.

higher in classical monocytes compared to nonclassical monocytes ( $p=3e-6$ ), whereas ncMSS was higher in nonclassical monocytes compared to the classical subset ( $p=2.7e-6$ ) (Figures 3B, C). Both scores identified their respective monocyte subset with high accuracy irrespective of the disease state of the sample (AUROC=1; Supplemental Figure 2), although *IER2* and *CTSA* were expressed in opposite directions. Importantly, cMSS and ncMSS for intermediate monocytes possessed scores between those of classical and non-classical monocytes (cMSS: intermediate vs classical  $p$ -value =  $7.4e-4$ ; intermediate vs non-classical  $p$ -value =  $3.4e-4$ ) (ncMSS: intermediate vs classical  $p$ -value =  $1.5e-3$ ; intermediate vs non-classical  $p$ -value =  $9.9e-3$ ) (Figures 3B, C). Overall, our results provide further independent evidence that our monocyte subset-specific signatures are consistently accurate across healthy and disease-affected samples.

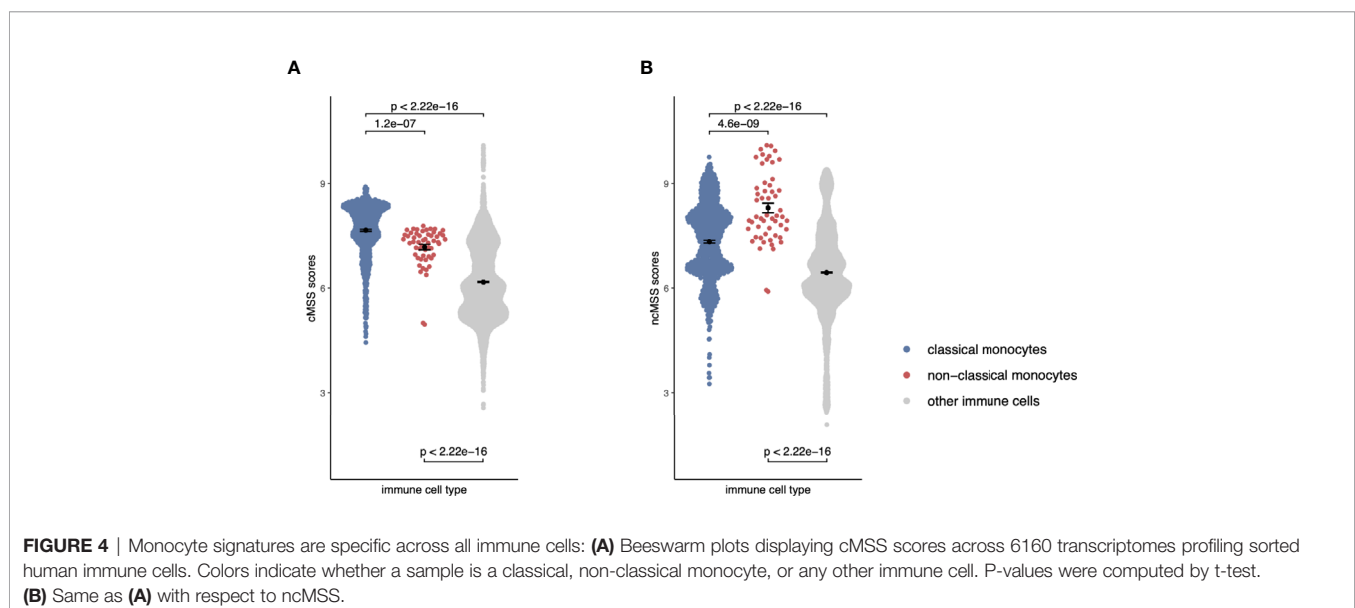
### Monocyte Signatures Are Highly Specific Across All Immune Cells

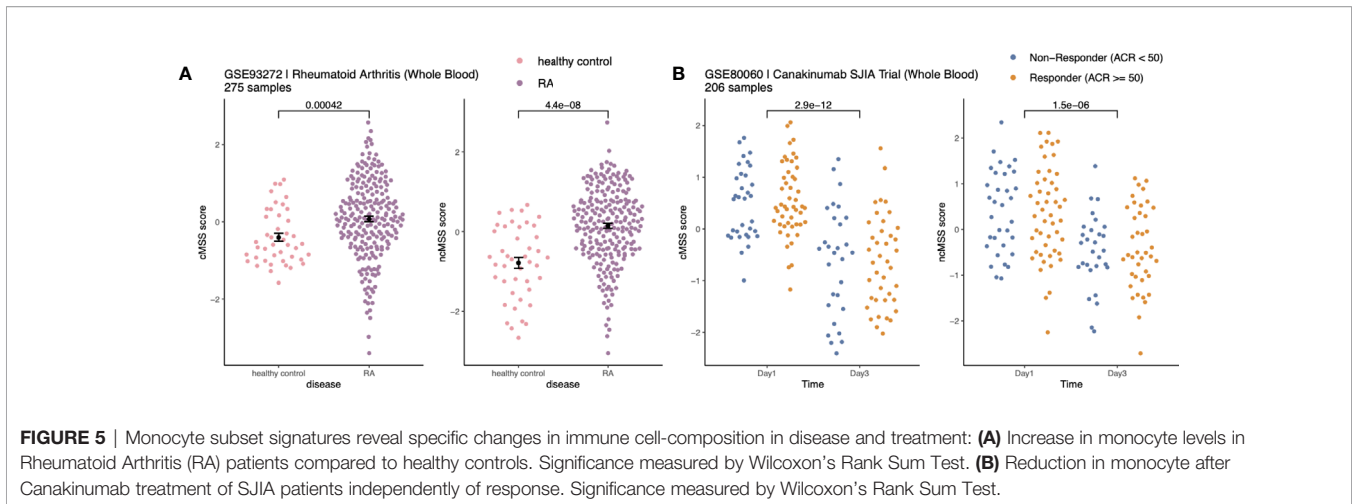
Although our transcriptional signatures are accurate and specific within monocyte subsets, irrespective of disease state and gene expression platform, they were obtained using gene expression data solely derived from monocytes. Therefore, we asked whether our signatures maintained their specificity and accuracy when compared across all immune cell lineages, including B cells, T cells, NK cells. This is important, as their direct application to blood or biopsy-derived expression profiles, which contain multiple and diverse cell populations, would otherwise produce confounded results (43). To answer this question, we compared effect sizes for each gene in our monocyte subset signatures across 20 sorted human immune cell types using 6160 transcriptomes from across 42 different microarray platforms described before (31). Hierarchical clustering of Hedge's  $g$  effect sizes (see Methods) of the genes in monocyte subset-specific signatures distinguished myeloid

and lymphoid lineages (Supplemental Figure 3). Further, within the myeloid cluster, both CD14+ and CD16+ subsets clustered separately from other myeloid cells (Supplemental Figure 3). Next, we calculated cMSS and ncMSS scores for each sample and evaluated their ability to accurately distinguish each subset among all immune cells. As expected, cMSS scores were significantly higher in classical monocytes compared to nonclassical monocytes (t-test  $p=1.2e-7$ ) and other immune cell types (t-test  $p<2.2e-16$ , Figure 4A). Similarly, ncMSS were significantly higher in nonclassical monocytes compared to classical monocytes (t-test  $p=4.6e-9$ ) and other immune cell types (t-test  $p<2.2e-16$ , Figure 4B). Furthermore, we observed high classification accuracy across both signatures (cMSS AUROC = 0.88; 95% CI: 0.87-0.89; ncMSS AUROC = 0.87; 95% CI: 0.83-0.91; Supplemental Figure 4), indicative of their specificity across all immune cells.

### Monocyte Signatures Reveal Changes Associated With Disease and Treatment

Next, we hypothesized that monocyte subset-specific signatures and their corresponding scores, cMSS and ncMSS, could be used to monitor changes in proportions of monocyte subset levels associated with disease. To test this hypothesis, we analyzed transcriptome profiles of whole blood samples (GSE93272) from healthy controls ( $n=43$ ) and patients with RA ( $n=232$ ) (44). We computed cMSS and ncMSS for each sample. We observed a significant increase in both cMSS ( $p = 4.2e-4$ ) and ncMSS ( $p = 4.4e-8$ ) in RA-patients compared to healthy controls, which is in line with increased monocyte proportion in patients with RA that has been previously observed (Figure 5A) (45). Finally, we assessed whether our signatures could detect changes in cellular composition induced by treatment. To this end, we analyzed a longitudinal dataset, GSE80060, profiling whole blood samples of patients affected by sJIA before and after treatment with canakinumab, a monoclonal antibody against IL-1 beta.





Changes in levels of circulating monocytes in sJIA have been described, with higher levels during active disease (46, 47). When comparing pre- and post-treatment samples, we measured a significant decrease in both classical ( $p = 2.9e-12$ ) and non-classical ( $p = 1.5e-6$ ) signatures post-treatment irrespective of response (**Figure 5B**). Our results indicate that our signatures can be used to specifically monitor changes in monocyte subsets occurring during disease and treatment.

### Validation of Monocyte Signature Genes as Novel Cell Surface Markers for Subset Quantification Using Cytometry

Cell type-specific gene signatures have been shown to enable accurate *in silico* estimation of corresponding cell types from expression data of mixed-cell samples, such as whole blood or peripheral blood mononuclear cells (PBMCs) (31). We therefore tested whether these signatures could be used to accurately quantify monocyte subsets within human samples by using publicly available expression profiles from healthy human PBMCs with paired flow-cytometry [GSE65316 (48)]. We indeed found the cMSS to be strongly and significantly correlated with cytometry-measured monocyte proportions across all samples ( $r = 0.69$ ,  $p = 6.7e-4$ ; **Figure 6**).

Next, we hypothesized that our large-scale transcriptome analysis would enable identification of cell surface markers to improve cellular phenotyping by cytometry using FACS or CyTOF. To test this hypothesis, we selected an extended set of genes that were significantly highly expressed in either classical or non-classical monocytes in both discovery and validation samples with an absolute effect size  $\geq 1$ , had documented surface expression, and for which an antibody for follow-up protein quantification by cytometry was commercially available (**Supplemental Table 5**). We selected *CD114* (gene name: *CSF3R*,  $ES = -1.28$ ,  $p = 2.84e-7$ ), *CD32* (gene name: *FCGR2A*,  $ES = -1.21$ ,  $p = 9.48e-7$ ), *CD36* ( $ES = -1.17$ ,  $p = 3.63e-6$ ), and *IL17RA* ( $ES = -1.10$ ,  $p = 4.39e-6$ ) as markers with higher expression in classical monocytes, and *SIGLEC10* ( $ES = 4.93$ ,  $p = 2.2e-70$ ) as a marker with higher expression in nonclassical monocytes compared to classical monocytes (**Figures 7A, B**).

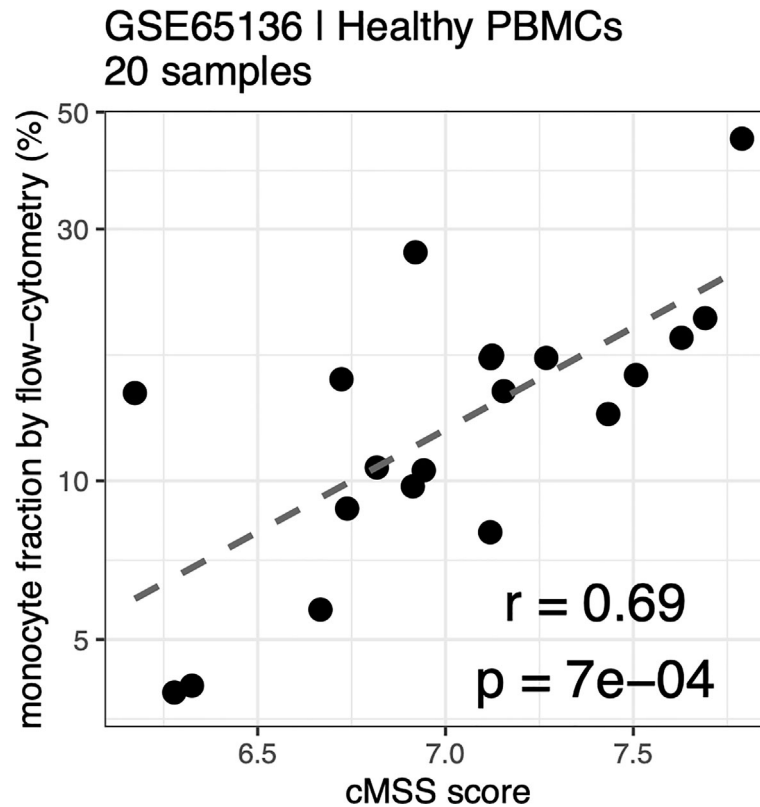
We profiled cell surface proteins corresponding to these differentially expressed genes in PBMCs from healthy adult donors ( $n=8$ ) and pediatric patients with sJIA ( $n=12$ ). In both healthy adults and sJIA subjects, expression of the selected markers was higher in the corresponding monocyte subset, as predicted by transcriptome analysis (**Figures 7C, D**) and **Supplemental Figure 5**). All of our predicted proteins had significantly different levels between classical and nonclassical monocytes on the cell surface in both healthy controls and sJIA patients ( $p < 0.05$ ).

In summary, we have developed monocyte subset-specific robust and parsimonious gene expression signatures. Our results highlight their specificity and accuracy irrespective of technical and biological confounders and show their utility in translational applications. More importantly, our approach demonstrates that genes differentially expressed between two groups despite biological and technical heterogeneity across multiple independent datasets can be robust differentiators of the two groups at the protein level as well.

## DISCUSSION

Here, we describe the generation and application of robust and parsimonious gene expression signatures to accurately and specifically quantify changes in monocyte subset levels from existing publicly available datasets. Our analysis presented here builds upon an existing framework that was previously applied to create a new and unbiased basis matrix for cell-mixture deconvolution of gene expression data. By applying this computational framework that integrates existing heterogeneous public expression data from sorted human monocytes, we identified gene signatures for the classical and nonclassical subsets, each consisting of ten over-expressed genes. We then validated our signatures using transcriptome profiles of 6661 sorted immune cell samples across 168 studies, including samples from patients with various diseases to demonstrate their generalizability despite biological, clinical, and technical heterogeneity. In addition, we profiled two independent





**FIGURE 6** | Monocyte signature quantifies monocytes in PBMC by flow-cytometry: Correlation between cMSS score and measured monocyte fraction by flow-cytometry from healthy PBMCs measured in GSE65136. Y-axis indicates measured cellular proportions by flow-cytometry, X-axis indicates cMSS score for the same samples. Correlation and significance are computed by calculating Pearson's correlation coefficient.

validation cohorts by RNA-seq and flow-cytometry, respectively, to validate our signatures at the individual gene level.

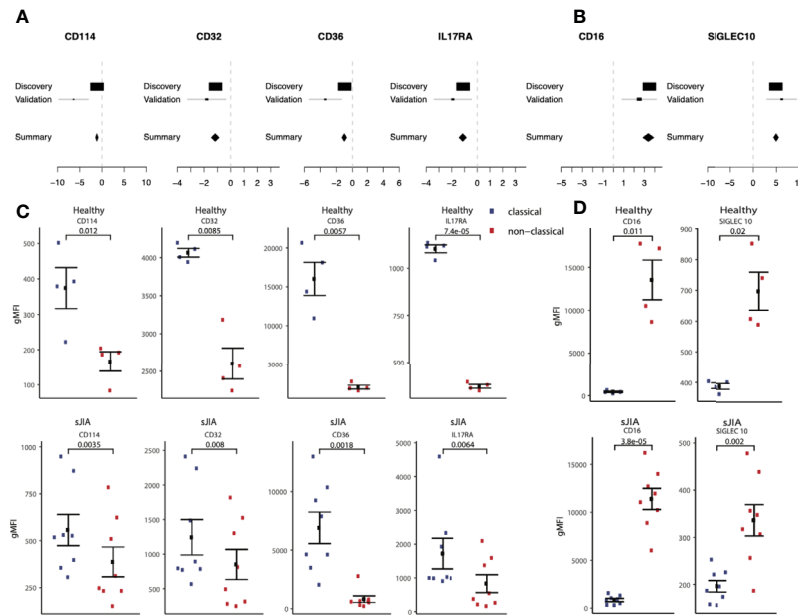
Our current work differs from previous efforts in several meaningful ways: First, our previous work on deconvolution aimed at building a basis matrix, *immunoStates*, that would account for 20 immune cell types. As a result, *immunoStates* is composed of more than 300 genes, and is applied in its entirety to deconvolve a sample of interest. Other studies, such as the one by Monaco et al. (36), established deconvolution approaches to quantify different cell types with high accuracy, as they rely on larger gene sets and statistical approaches tailored toward a specific data type or platform (e.g., RNA-seq).

In contrast, here we focused on creating cell-type specific signatures consisting of only a small set of genes to be used independent of any other signatures or deconvolution framework, while retaining high specificity and accuracy across multiple platforms. This strategy allows the researcher to specifically measure our parsimonious signature genes in a sample of interest using targeted assays such as qPCR or nanoString, which can be useful and cost-effective in pilot studies and clinical settings and is therefore complementary to tailored deconvolution approaches (36).

Second, our current gene selection strategy was chosen to prioritize genes that could be easily used as individual biomarkers

for cytometry-based assays. Such strategies take into account the directionality of the markers and their expression difference, to increase the likelihood of validation by flow-cytometry. Indeed, a number of genes in our signatures correspond to surface markers with commercially available antibodies. Using this set of markers, we confirmed the subset specificity of the markers in both healthy and disease samples at the protein level. Among the markers identified and validated by flow cytometry, only CD16 and CD36, in addition to CD14 and HLA-DR, have been commonly used to identify monocyte subsets (49, 50). The additional markers we identified could thus be potentially useful in further probing the heterogeneity of monocyte subsets, as revealed by recent studies utilizing the high dimensionality of mass cytometry and single cell sequencing to tease out the heterogeneity of the human monocyte population (42, 43, 51).

Finally, our analysis leveraged only samples profiled from healthy individuals, whereas our previous work included expression data from disease-affected samples as well. Our rationale for this decision was based on having on average 22 studies per targeted cell type in our discovery set, which triples both the statistical power and the amount of accounted heterogeneity in this study compared to our previous work [8 studies per cell type, (31)]. We hypothesized these increases would result in more robust signatures, and our validation



**FIGURE 7** | Monocyte signature genes distinguish monocyte subsets by flow-cytometry: **(A)** mRNA expression effect sizes comparing classical vs. non-classical subsets in both discovery and validation cohorts for each marker associated with classical monocytes (lower effect sizes values indicate higher expression in classical monocytes). **(B)** Same as **(A)** but for markers associated with non-classical monocytes (higher effect size values indicate higher expression in non-classical monocytes). **(C)** Monocyte subsets were manually gated using FlowJo software. Data shown are geometric mean fluorescence intensity (gmean) in both healthy (top row) and sJIA patients (bottom row). Comparisons made using T-test unpaired unless specified for markers associated with classical monocytes. **(D)** Same as (C) for markers associated with non-classical monocytes.

cohort validated our signatures irrespective of disease state. Analysis of our cohort also revealed that the expression levels of our signature scores in intermediate monocytes were intermediate between the classical and non-classical subsets. It has long been debated whether intermediate monocytes exist as a stable subset or represent a transitional state between classical and non-classical monocytes (52). Another alternative, not necessarily mutually exclusive, is that intermediate monocytes may comprise a heterogeneous cell mix (42, 53). Our results are consistent with evidence that human intermediate monocytes, like similar cells in mice (54) are an intermediate, transitory subset between classical and non-classical monocytes rather than a fixed, independent population (55). To test this hypothesis, we generated an additional expression signature from our discovery data, identifying genes that could specifically distinguish intermediate monocytes compared to all other subsets. Using the same criteria applied for the other signatures, we identified 10 genes that accurately distinguished intermediate monocytes from all other subsets (*ATG2A*, *ATP50*, *DX39A*, *EVL*, *GPR183*, *LPCAT1*, *POU2F2*, *TSC22D4*, *ZNF14*, *ARHGAP27*, **Supplemental Figure 6**). Unlike our previous signatures, we did not observe a good distinction of intermediate monocyte samples, neither in our own discovery set, nor in our validation cohort. Similarly, although gene expression analysis, both from microarray as well as from single cell RNA-seq analysis, generally support the concept of genetically separate three monocyte subsets, the exact nature of the intermediate subset, and its relationship to other monocyte subsets, could not be fully determined (56).

Our work has several limitations. First, our discovery data sets consist exclusively of microarray datasets, which can limit the number and type of cell-type specific markers that can be discovered compared to sequencing-based transcriptome profiling. This is particularly relevant in the context of intermediate monocytes. For example, HLA-DM has been identified as a strong discriminating marker that separates the intermediate subset from classical and non-classical (37). However, this marker is not usually profiled on microarrays, limiting our discovery potential. Secondly, we identified our signature genes by simply selecting the top 10 from a ranked list. While this approach is simple and intuitive, it prevents the consideration of other high-ranking genes as potential biomarkers. This potential can be explored in future work, where additional gene set selection strategies can be applied to this data.

Finally, to increase robustness and power of our signatures, our work leverages solely transcriptomic data without accounting for differences occurring post-transcriptionally that may affect final protein levels (57). This concern is especially relevant when translating our results into cytometry/staining based assays that leverage protein expression of surface markers. To this date, high-throughput proteomics data is limited by technical constraints on the number of protein markers that can be simultaneously profiled on a single sample. Advances in mass-cytometry based techniques can in principle extend our ability to profile multiple markers expressed in a single-cell (58), as well as proteomics (59), but at scales substantially lower than transcriptomics-based assays. In conclusion, we present a collection of robust and

parsimonious gene expression signatures that can distinguish and quantify monocyte subsets across disease affected samples and can be used to identify cytometry biomarkers. Our work provides several applications and highlights the potential for our signatures and markers to be used in clinical and translational settings.

## DATA AVAILABILITY STATEMENT

The datasets presented in this study can be found in online repositories. The names of the repository and accession numbers can be found in the **Supplemental Material**.

## AUTHOR CONTRIBUTIONS

FV, EM, and PK designed research, interpreted the results, and wrote the manuscript. FV and LZ performed bioinformatic analysis. CM contributed to experimental design, drafting of and revising manuscript. CM, SH, NR-a, and SM performed experiments and analyzed data. MN and JG performed patient sample collection and processing. EM and PK supervised the study. All authors contributed to the article and approved the submitted version.

## REFERENCES

- Jakubzick CV, Randolph GJ, Henson PM. Monocyte Differentiation and Antigen-Presenting Functions. *Nat Rev Immunol* (2017) 17:349–62. doi: 10.1038/nri.2017.28
- Guilliams M, Mildner A, Yona S. Developmental and Functional Heterogeneity of Monocytes. *Immunity* (2018) 49:595–613. doi: 10.1016/j.immuni.2018.10.005
- Serbina NV, Jia T, Hohl TM, Pamer EG. Monocyte-Mediated Defense Against Microbial Pathogens. *Annu Rev Immunol* (2008) 26:421–52. doi: 10.1146/annurev.immunol.26.021607.090326
- Passlick B, Flieger D, Ziegler-Heitbrock HW. Identification and Characterization of a Novel Monocyte Subpopulation in Human Peripheral Blood. *Blood* (1989) 74:2527–34. doi: 10.1182/blood.V74.7.2527.bloodjournal7472527
- Ziegler-Heitbrock L, Ancuta P, Crowe S, Dalod M, Grau V, Hart DN, et al. Nomenclature of Monocytes and Dendritic Cells in Blood. *Blood* (2010) 116:e74–80. doi: 10.1182/blood-2010-02-258558
- Ziegler-Heitbrock L. Blood Monocytes and Their Subsets: Established Features and Open Questions. *Front Immunol* (2015) 6:423. doi: 10.3389/fimmu.2015.00423
- Wong KL, Tai JJ, Wong WC, Sem X, Yeap WH, et al. Gene Expression Profiling Reveals the Defining Features of the Classical, Intermediate, and Nonclassical Human Monocyte Subsets. *Blood* (2011) 118:e16–31. doi: 10.1182/blood-2010-12-326355
- Mitchell AJ, Roediger B, Weninger W. Monocyte Homeostasis and the Plasticity of Inflammatory Monocytes. *Cell Immunol* (2014) 291(1-2):22–31. doi: 10.1016/j.cellimm.2014.05.010
- Trzebanski S, Jung S. Plasticity of Monocyte Development and Monocyte Fates [Published Online Ahead of Print, 2020 Aug 16]. *Immunol Lett* (2020), 277:66–78. doi: 10.1016/j.imlet.2020.07.007
- Cros J, Cagnard N, Woollard K, Patey N, Zhang SY, Senechal B, et al. Human CD14<sup>dim</sup> Monocytes Patrol and Sense Nucleic Acids and Viruses Via TLR7 and TLR8 Receptors. *Immunity* (2010) 33:375–86. doi: 10.1016/j.immuni.2010.08.012
- Zawada AM, Rogacev KS, Rotter B, Winter P, Marell RR, Fliser D, et al. Supersage Evidence for CD14<sup>++</sup>CD16<sup>+</sup> Monocytes as a Third Monocyte Subset. *Blood* (2011) 118(12):e50–61. doi: 10.1182/blood-2011-01-326827

## FUNDING

PK is funded in part by the Bill and Melinda Gates Foundation (OPP1113682); the National Institute of Allergy and Infectious Diseases (NIAID) grants 1U19AI109662, U19AI057229, and 5R01AI125197; Department of Defense contracts W81XWH-18-1-0253 and W81XWH1910235; and the Ralph & Marian Falk Medical Research Trust. EDM, SC-H supported in part by the Daylight Foundation and EDM, CM, SC-H, MN, JG supported in part by the University of California, San Francisco–Stanford Arthritis Center of Excellence, funded in part by the Arthritis Foundation.

## ACKNOWLEDGMENTS

We thank Michael Figueroa for help with PCR experiments.

## SUPPLEMENTARY MATERIAL

The Supplementary Material for this article can be found online at: <https://www.frontiersin.org/articles/10.3389/fimmu.2021.659255/full#supplementary-material>

- Kapellos TS, Bonaguro L, Gemünd I, Reusch N, Saglam A, Hinkley ER, et al. Human Monocyte Subsets and Phenotypes in Major Chronic Inflammatory Diseases. *Front Immunol* (2019) 10:2035. doi: 10.3389/fimmu.2019.02035
- Mukherjee R, Barman PK, Kumar PK, Tripathy R, Das BK, Ravindran B. Non-Classical Monocytes Display Inflammatory Features: Validation in Sepsis and Systemic Lupus Erythematosus. *Sci Rep* (2015) 5:13886. doi: 10.1038/srep13886
- Belge KU, Dayyani F, Horelt A, Siedlar M, Frankenberger M, Frankenberger B, et al. The Proinflammatory CD14<sup>+</sup>CD16<sup>+</sup>DR<sup>++</sup> Monocytes are a Major Source of TNF. *J Immunol* (2002) 168:3536–42. doi: 10.4049/jimmunol.168.7.3536
- Narasimhan PB, Marcovecchio P, Hamers AAJ, Hedrick CC. Nonclassical Monocytes in Health and Disease. *Annu Rev Immunol* (2019) 37:439–56. doi: 10.1146/annurev-immunol-042617-053119
- Rossol M, Kraus S, Pierer M, Baerwald C, Wagner U. The CD14(Bright) CD16<sup>+</sup> Monocyte Subset is Expanded in Rheumatoid Arthritis and Promotes Expansion of the Th17 Cell Population. *Arthritis Rheumatol* (2012) 64:671–7. doi: 10.1002/art.33418
- Tsukamoto M, Seta N, Yoshimoto K, Suzuki K, Yamaoka K, Takeuchi T. CD14(Bright)CD16<sup>+</sup> Intermediate Monocytes are Induced by Interleukin-10 and Positively Correlate With Disease Activity in Rheumatoid Arthritis. *Arthritis Res Ther* (2017) 19:28. doi: 10.1186/s13075-016-1216-6
- Tsukamoto M, Suzuki K, Seta N, Takeuchi T. Increased Circulating CD14<sup>bright</sup>CD16<sup>+</sup> Intermediate Monocytes are Regulated by TNF-Alpha and IL-6 Axis in Accordance With Disease Activity in Patients With Rheumatoid Arthritis. *Clin Exp Rheumatol* (2018) 36:540–44. doi: 10.1186/s13075-016-1216-6
- Stansfield BK, Ingram DA. Clinical Significance of Monocyte Heterogeneity. *Clin Trans Med* (2015) 4:5. doi: 10.1186/s40169-014-0040-3
- Silvin A, Chapuis N, Dunsmore G, Goubet AG, Dubuisson A, Derosa L, et al. Elevated Calprotectin and Abnormal Myeloid Cell Subsets Discriminate Severe From Mild COVID-19 [Published Online Ahead of Print, 2020 Aug 5]. *Cell* (2020) 182:1401–18. doi: 10.1016/j.cell.2020.08.002
- Gatti A, Radrizzani D, Viganò P, Mazzone A, Brando B. Decrease of Non-Classical and Intermediate Monocyte Subsets in Severe Acute SARS-Cov-2 Infection [Published Online Ahead of Print, 2020 Jul 12]. *Cytometry A* (2020) 97:887–90. doi: 10.1002/cyto.a.24188

22. Ionnadis JPA. Why Most Published Research Findings are False. *PloS Med* (2015) 2(8):e124. doi: 10.1371/journal.pmed.0020124
23. Sweeney TE, Haynes WA, Vallania F, Ioannidis JP, Khatri P. Methods to Increase Reproducibility in Differential Gene Expression Via Meta-Analysis. *Nucleic Acids Res* (2017) 45:e1. doi: 10.1093/nar/gkw797
24. Khatri P, Roederer S, Kimura N, De Vusser K, Morgan AA, Gong Y, et al. A Common Rejection Module (CRM) for Acute Rejection Across Multiple Organs Identifies Novel Therapeutics for Organ Transplantation. *J Exp Med* (2013) 210:2205–21. doi: 10.1084/jem.20122709
25. Mazur PK, Reynoird N, Khatri P, Jansen PW, Wilkinson AW, Liu S, et al. SMYD3 Links Lysine Methylation of MAP3K2 to Ras-Driven Cancer. *Nature* (2014) 510:283–7. doi: 10.1038/nature13320
26. Chen R, Khatri P, Mazur PK, Polin M, Zheng Y, Vaka D, et al. A Meta-Analysis of Lung Cancer Gene Expression Identifies PTK7 as a Survival Gene in Lung Adenocarcinoma. *Cancer Res* (2014) 74:2892–902. doi: 10.1158/0008-5472.CAN-13-2775
27. Li MD, Burns TC, Morgan AA, Khatri P. Integrated Multi-Cohort Transcriptional Meta-Analysis of Neurodegenerative Diseases. *Acta Neuropathol Commun* (2014) 2:93. doi: 10.1186/s40478-014-0093-y
28. Sweeney TE, Shidham A, Wong HR, Khatri P. A Comprehensive Time-Course-Based Multicohort Analysis of Sepsis and Sterile Inflammation Reveals a Robust Diagnostic Gene Set. *Sci Transl Med* (2015) 7:287ra71. doi: 10.1126/scitranslmed.aaa5993
29. Andres-Terre M, McGuire HM, Pouliot Y, Bongen E, Sweeney TE, Tato CM, et al. Integrated, Multi-Cohort Analysis Identifies Conserved Transcriptional Signatures Across Multiple Respiratory Viruses. *Immunity* (2015) 43:1199–211. doi: 10.1016/j.immuni.2015.11.003
30. Sweeney TE, Braviak L, Tato CM, Khatri P. Genome-Wide Expression for Diagnosis of Pulmonary Tuberculosis: A Multicohort Analysis. *Lancet Respir Med* (2016) 4:213–24. doi: 10.1016/S2213-2600(16)00048-5
31. Vallania F, Tam A, Lofgren S, Schaffert S, TD A, Bongen E, et al. Leveraging Heterogeneity in Public Data to Reduce Bias and Increase Accuracy of Cell-Mixture Deconvolution. *Nat Commun* (2018) 9:4735. doi: 10.1038/s41467-018-07242-6
32. Scott M, Quinn K, Li Q, Carroll R, Warsinske H, Vallania F, et al. Increased Monocyte Count as a Cellular Biomarker for Poor Outcomes in Fibrotic Diseases: A Retrospective, Multicentre Cohort Study. *Lancet Respir Med* (2019) 7:6 497–508. doi: 10.1016/S2213-2600(18)30508-3
33. Chowdury RR, Vallania F, Yang Q, Lopez Angel CJ, Darboe F, Penn-Nicholson A, et al. A Multi-Cohort Study of the Immune Factors Associated with M. Tuberculosis Infection Outcomes. *Nature* (2018) 560(7720):644–8. doi: 10.1038/s41586-018-0439-x
34. Bongen E, Vallania F, Utz PJ, Khatri P. KLRD1 Expressing NK Cells Predict Influenza Susceptibility. *Genome Med* (2018) 10:45. doi: 10.1186/s13073-018-0554-1
35. Zheng H, Rao AM, Dermadi D, Toh J, Jones LM, Donato M, et al. Multi-Cohort Analysis of Host Immune Response Identifies Conserved Protective and Detrimental Modules Associated With Severity Across Viruses. *Immunity* (2021) 54:1–16. doi: 10.1016/j.immuni.2021.03.002
36. Monaco G, Lee B, Xu W, Mustafah S, Hwang YY, Carré C, et al. RNA-Seq Signatures Normalized by Mrna Abundance Allow Absolute Deconvolution of Human Immune Cell Types. *Cell Rep* (2019) 26(6):1627–40.e7. doi: 10.1016/j.celrep.2019.01.041
37. Subramanian A, Tamayo P, Mootha VK, et al. Gene Set Enrichment Analysis: A Knowledge-Based Approach for Interpreting Genome-Wide Expression Profiles. *Proc Natl Acad Sci* (2005) 102(43):15545–50. doi: 10.1073/pnas.0506580102
38. Lee J, Tam H, Adler L, Istad-Minnihan A, Macaubas C, Mellins ED. The MHC Class II Antigen Presentation Pathway in Human Monocytes Differs by Subset and is Regulated by Cytokines. *PloS One* (2017) 12(8):e0183594. doi: 10.1371/journal.pone.0183594
39. Macaubas C, Wong E, Zhang Y, Nguyen KD, Lee J, Milojevic D, et al. Altered Signaling in Systemic Juvenile Idiopathic Arthritis Monocytes. *Clin Immunol (Orlando Fla)* (2016) 163:66–74. doi: 10.1016/j.clim.2015.12.011
40. Thériault P, ElAli A, Rivest S. The Dynamics of Monocytes and Microglia in Alzheimer's Disease. *Alzheimers Res Ther* (2015) 15(71):41. doi: 10.1186/s13195-015-0125-2
41. Haynes WA, Vallania F, Liu C, Bongen E, Tomczak A, Andres-Terrè M, et al. Empowering Multi-Cohort Gene Expression Analysis to Increase Reproducibility. *Pac Symp Biocomput* (2017) 22:144–53. doi: 10.1142/9789813207813\_0015
42. Villani AC, Satija R, Resynolds G, Sarkizova S, Shekhar K, Fletcher J, et al. Single-Cell RNA-Seq Reveals New Types of Human Blood Dendritic Cells, Monocytes, and Progenitors. *Science* (2017) 356(6335):eaah4573. doi: 10.1126/science.aah4573
43. Haynes W, Vallania F, Khatri P. Complementing Single-Cell RNA-Seq Using Bulk Transcriptional Profiles. *IEEE Int Conf Bioinf Biomed (BIBM) Kansas City Mo* (2017) 1446–50. doi: 10.1109/BIBM.2017.8217875
44. Tasaki S, Suzuki K, Kassai Y, Takeshita M, Murota A, Kondo Y, et al. Multi-Omics Monitoring of Drug Response in Rheumatoid Arthritis in Pursuit of Molecular Remission. *Nat Commun* (2018) 9:2755. doi: 10.1038/s41467-018-05044-4
45. Coulthard LR, Geiler J, Mathews RJ, Church LD, Dickie LJ, Cooper DL, et al. Differential Effects of Infliximab on Absolute Circulating Blood Leukocyte Counts of Innate Immune Cells in Early and Late Rheumatoid Arthritis Patients. *Clinical & Experimental. Immunology* (2012) 170:36–46. doi: 10.1111/j.1365-2249.2012.04626.x
46. Fall N, Barnes M, Thornton S, Luyrink L, Olson J, Ilowite NT, et al. Gene Expression Profiling of Peripheral Blood From Patients With Untreated New-Onset Systemic Juvenile Idiopathic Arthritis Reveals Molecular Heterogeneity That May Predict Macrophage Activation Syndrome. *Arthritis Rheumatol* (2007) 56(11):3793–804. doi: 10.1002/art.22981
47. Macaubas C, Nguyen K, Deshpande C, Phillips C, Peck A, Lee T, et al. Distribution of Circulating Cells in Systemic Juvenile Idiopathic Arthritis Across Disease Activity States. *Clin Immunol* (2010) 134(2):206–16. doi: 10.1016/j.clim.2009.09.010
48. Newman A, Liu C, Green M, Gentles AJ, Feng W, Xu Y, et al. Robust Enumeration of Cell Subsets From Tissue Expression Profiles. *Nat Methods* (2015) 12:453–7(2015). doi: 10.1038/nmeth.3337
49. Thomas GD, Hamers AAJ, Nakao C, Marcovecchio P, Taylor AM, McSkimming C, et al. Human Blood Monocyte Subsets: A New Gating Strategy Defined Using Cell Surface Markers Identified by Mass Cytometry. *Arterioscler Thromb Vasc Biol* (2017) 37:1548–58. doi: 10.1161/ATVBAHA.117.309145
50. Hamers AAJ, Dinh HQ, Thomas GD, Marcovecchio P, Blatchley A, Nakao CS, et al. Human Monocyte Heterogeneity as Revealed by High-Dimensional Mass Cytometry. *Arterioscler Thromb Vasc Biol* (2019) 39(1):25–36. doi: 10.1161/ATVBAHA.118.311022
51. Duterte CA, Becht E, Irac SE, Khalilnezhad A, Narang V, Khalilnezhad S, et al. Single-Cell Analysis of Human Mononuclear Phagocytes Reveals Subset-Defining Markers and Identifies Circulating Inflammatory Dendritic Cells. *Immunity* (2019) 51(3):573–89.e8. doi: 10.1016/j.immuni.2019.08.008
52. Ziegler-Heitbrock L, Hofer TP. Toward a Refined Definition of Monocyte Subsets. *Front Immunol* (2013) 4:23. doi: 10.3389/fimmu.2013.00023
53. Gregori S, Tomasoni D, Pacciani V, Scirpoli M, Battaglia M, Magnani CF, et al. Differentiation of Type 1 T Regulatory Cells (Tr1) by Tolerogenic DC-10 Requires the IL-10-Dependent ILT4/HLA-G Pathway [Published Correction Appears in *Blood*. 2011 Nov 3;118(18):5060]. *Blood* (2010) 116(6):935–44. doi: 10.1182/blood-2009-07-234872
54. Briseño CG, Haldar M, Kretzer NM, Wu X, Theisen DJ, Kc W, et al. Distinct Transcriptional Programs Control Cross-Priming in Classical and Monocyte-Derived Dendritic Cells. *Cell Rep* (2016) 15(11):2462–74. doi: 10.1016/j.celrep.2016.05.025
55. Patel AA, Zhang Y, Fullerton JN, Boelen L, Rongvaux A, Maini AA, et al. The Fate and Lifespan of Human Monocyte Subsets in Steady State and Systemic Inflammation. *J Exp Med* (2017) 214:1913–23. doi: 10.1084/jem.20170355
56. Cormican S, Griffin MD. Human Monocyte Subset Distinctions and Function: Insights From Gene Expression Analysis. *Front Immunol* (2020) 11:1070. doi: 10.3389/fimmu.2020.01070
57. Liu Y, Beyer A, Aebersold R. On the Dependency of Cellular Protein Levels on Mrna Abundance. *Cell* (2016) 165:535–50. doi: 10.1016/j.cell.2016.03.014
58. Maecker H, McCoy J, Nussenblatt R. Standardizing Immunophenotyping for the Human Immunology Project. *Nat Rev Immunol* (2012) 12:191–200. doi: 10.1038/nri3158

59. Ravenhill BJ, Soday L, Houghton J, Antrobus R, Weekes MP. Comprehensive Cell Surface Proteomics Defines Markers of Classical, Intermediate and Non-Classical Monocytes. *Sci Rep* (2020) 10(1):4560. doi: 10.1038/s41598-020-61356-w

**Conflict of Interest:** The authors declare that the research was conducted in the absence of any commercial or financial relationships that could be construed as a potential conflict of interest.

Copyright © 2021 Vallania, Zisman, Macaubas, Hung, Rajasekaran, Mason, Graf, Nakamura, Mellins and Khatri. This is an open-access article distributed under the terms of the Creative Commons Attribution License (CC BY). The use, distribution or reproduction in other forums is permitted, provided the original author(s) and the copyright owner(s) are credited and that the original publication in this journal is cited, in accordance with accepted academic practice. No use, distribution or reproduction is permitted which does not comply with these terms.