

UC Riverside

UC Riverside Previously Published Works

Title

Changing ecological communities along an elevation gradient in seasonally dry tropical forest on Hispaniola (Sierra Martín García, Dominican Republic)

Permalink

<https://escholarship.org/uc/item/8tr149z5>

Journal

Biotropica, 51(6)

ISSN

0006-3606

Authors

Franklin, Janet
Majure, Lucas C
Encarnación, Yuley
[et al.](#)

Publication Date

2019-11-01

DOI

10.1111/btp.12707

Peer reviewed

Changing ecological communities along an elevation gradient in seasonally dry tropical forest on Hispaniola (Sierra Martín García, Dominican Republic)

Running Head: Seasonally dry tropical forest on Hispaniola

Janet Franklin^{1,2}, Lucas C. Majure³, Yuley Encarnación⁴, Teodoro Clase⁴, Hodali Almonte-Espinosa⁵, Miguel Landestoy⁶, Andrew W. Kratter³, Jessica A. Oswald^{3,7}, Douglas E. Soltis³, Ryan S. Terrill⁸, and David W. Steadman³

¹ Department of Botany and Plant Sciences, University of California, Riverside CA, USA 92504

² Corresponding author; email: janet.franklin@ucr.edu

³ Florida Museum of Natural History, University of Florida, Gainesville, FL 32611

⁴ Herbario JBSD, Departamento de Botánica, Jardín Botánico Nacional “Dr. Rafael M. Moscoso”, Santo Domingo, República Dominicana.

⁵ Museo Nacional de Historia Natural “Prof. Eugenio de Jesús Marcano”, Santo Domingo, República Dominicana.

⁶ Escuela de Biología, Universidad Autónoma de Santo Domingo. República Dominicana.

⁷ University of Reno, Nevada, Reno, NV, 89557 USA

⁸ Biology Department, Occidental College, Los Angeles, CA 90041

THIS PAPER IS PUBLISHED AS:

Franklin, J., Steadman, D.W., Majure, L.C., Oswald, J.A., Soltis, D.E., Encarnación, Y., Clase, T., Almonte-Espinosa, H., Kratter, A.W., Terrill, R.S., 2019, The changing ecological communities along an elevation gradient in seasonally dry tropical forest on Hispaniola (Sierra Martín García, Dominican Republic), *Biotropica* 51:802-816 DOI: 10.1111/btp.12707

ABSTRACT

We report the results of systematic vascular plant and bird surveys in Seasonally Dry Tropical Forest (SDTF) across leeward and windward elevation gradients (31– 884 masl) in the Sierra Martín García (SMG), Dominican Republic. We expected to see gradual, systematic changes in plant distributions with elevation owing to the strong effect of topoclimate. In contrast, we predicted bird community composition to be related only weakly to elevation, because we expected bird distributions to be more strongly related to vegetation structure than composition. Based on 48 vegetation transects, we identified seven groups that differed in their species composition, which was correlated with elevation and precipitation. The most distinctive vegetation community occurs in dry, warm, low elevations on the leeward slope, featuring large numbers of non-woody indicator species (those species found frequently within one group but not in other groups) even though most of its trees and shrubs represent species that are widespread. Low rainfall and shale bedrock (rather than limestone) may be the primary drivers of distinctiveness in the low elevation leeward plots. On the leeward slope, where we also surveyed the birds, the vegetation community changes gradually with elevation at mid- to high elevations. The most distinctive bird community also was associated with the low-elevation forest on shale bedrock and was dominated by widespread species. At higher elevations, but still within leeward SDTF, the bird communities had a stronger component of species endemic either to Hispaniola or to Caribbean islands, and species turnover did not correspond to the elevation gradient.

ABSTRACT (SPANISH)

Se reportan los resultados de estudios sistemáticos de plantas vasculares y aves en bosque seco tropical (SDTF por sus siglas en inglés) a través de gradientes de elevación de sotavento y barlovento (31–884 msnm) en la Sierra Martín García (SMG), República Dominicana. Se esperaba encontrar cambios sistemáticos y graduales de distribuciones de plantas según la elevación debido al efecto fuerte de topoclima. Al contrario, se esperaba que la composición de la comunidad de aves (predicha) estuviera relacionada débilmente a elevación, porque se esperaba que la distribución de aves estuviera fuertemente relacionada más a la estructura vegetal que a la composición de vegetación. Basado en 48 transectos de vegetación, se indentificaron siete grupos que se diferenciaron en su composición de especies, lo cual fue correlacionado con elevación y precipitación. Las comunidades de vegetación más distintas ocurren en elevaciones bajas con el clima seco y caloroso, de la ladera de sotavento, que consta de un alto número de especies indicadoras no maderables, aunque la mayoría de los árboles y arbustos en esa área están representados por especies de amplia distribución. El promedio bajo de precipitación y piedra de pizarra (en vez de caliza) podrían ser los principales factores que causan esta distinción en las parcelas del sotavento de baja elevación. En la ladera de sotavento, donde

también anotamos las aves, la comunidad de vegetación cambia gradualmente con la elevación de media- a alta elevaciones. La comunidad de aves más distinta fue asociada con el bosque del lado de sotavento de baja-elevación sobre pizarra; esta comunidad de aves fue dominada por especies de amplia distribución. En elevaciones más altas, pero aún en SDTF del lado de sotavento, las comunidades de aves tuvieron un componente más representado por especies endémicas de La Española o del Caribe en general, y el recambio de especies no correspondió a gradientes de elevación.

Key words: birds, Caribbean island, climate, community composition, Greater Antilles, plants, precipitation, turnover, windward-leeward effects

ELEVATIONAL GRADIENTS ON TROPICAL MOUNTAINS FEATURE SYSTEMATICALLY DECREASING TEMPERATURES AND MORE COMPLEX CHANGES IN PRECIPITATION OVER SHORT GEOGRAPHICAL DISTANCES. Precipitation and temperature regimes, along with changes in atmospheric pressure, radiation, and cloudiness, strongly affect the bioclimatic environment (water balance, humidity, thermal, and light regimes) for terrestrial ecosystems (Körner 2007). While such patterns have long been associated with the distribution and diversity of plant and animal species and communities (von Humboldt & Bonpland 1805, Terborgh 1971, Gentry 1988), there is a renewed call to study ecosystems along tropical elevation gradients as laboratories for evaluating global change (Malhi *et al.* 2010, Campos-Cerqueira *et al.* 2017).

Foundational work in plant community ecology by R.H. Whittaker and others used elevation transects to represent gradients of environmental variation (Whittaker 1956, Whittaker & Niering 1968), concluding that vegetation was composed of a continuum of populations -- gradual turnover in species composition (rather than discontinuous assemblages) -- in concordance with the individualistic model of plant communities (Gleason 1926). These studies often used elevation in combination with topography to represent a "moisture gradient" of water available for plant growth, a key determinant of plant distributions. Whittaker also acknowledged, however, that plant community composition change is both continuous and discontinuous, with discontinuities (abrupt changes in composition) occurring where there are geographical discontinuities in environmental conditions (topography, soil parent material, disturbance) (Whittaker 1967). In tropical mountains "individualistic" patterns of plant species turnover with elevation (staggered distributions of dominant tree species without sharp discontinuities of turnover in community composition) characterized a gradient from 1500–2500 m on the Pacific slope of Mexico (Manatlán Biosphere Reserve, Jalisco) that included the transition from seasonally dry forest to cloud forest (Vázquez G. & Givnish 1998).

In contrast, across greater ranges of elevation, the changes in vegetation structure, life form composition, and species composition from tropical lowland forests to alpine shrublands and grasslands have been

recognized as different plant formations, biomes, or life zones (Holdridge 1947), suggesting discontinuities in species distributions. For example, spanning 3400 m of elevation on Mt. Kinabalu, Borneo, the distribution of lowland, montane, and subalpine plant formations was associated with changes in species composition, diversity, and vegetation structure, although the rates of these changes along the gradient differed among geologic substrates (Aiba & Kitayama 1999). (Different rates of species turnover were also found on different substrates in a temperate setting by Whittaker and Niering (1968)). In the Neotropics, differences in climatic conditions (temperature and rainfall) were the factors most strongly associated with changing plant species composition along an Andean 2000-m elevation gradient ranging from seasonally dry forest to cloud forest (Blundo *et al.* 2012). The distribution of two vegetation formations (pine woodland versus cloud forest) on the island of Hispaniola (Cordillera Central, Dominican Republic) from 1100–3100 m elevation was strongly determined by changes in mesoclimate, but also feedbacks between climate and the fire disturbance regimes (Martin *et al.* 2007, Martin & Fahey 2014). Also for Hispaniola (Sierra de Bahoruco, Dominican Republic), plant species composition was distinct among four plant formations spanning thorn woodland to cloud forest on an elevational transect of 0–1500 m (Fisher-Meerow & Judd 1989).

Our study also takes place on the West Indian island of Hispaniola, focusing on Neotropical seasonally dry tropical forest (SDTF), an ecological community that is highly threatened from extensive clearing for pasture and crops (Pennington *et al.* 2009). SDTF is closed-canopy tropical forest typically found in frost-free areas having strongly seasonal moisture, with annual rainfall $< \sim 1800$ mm and monthly rainfall < 100 mm during a 3–6 month dry season (Lugo *et al.* 2006). SDTF shows remarkable biogeographical patterns of tree diversity throughout the Neotropics (e.g., DRYFLOR *et al.* 2016), with high plant beta diversity (species turnover among disjunct regions) attributed to low dispersal ability and isolation, resulting in considerable speciation and endemism (Pennington *et al.* 2009). Variation in SDTF tree species composition across the West Indies is associated with large-scale gradients of temperature and precipitation, but also with biogeographical history and resulting patterns of isolation and endemism (Franklin *et al.* 2018). West Indian SDTF harbors unique plant (DRYFLOR *et al.* 2016) and bird (Prieto-Torres *et al.* 2018) communities. Within SDTF on Mexico's Pacific slope (Chamela-Cuixmala Biosphere Reserve, Jalisco), over an elevation range of only 48–123 m (therefore with little variation in mesoclimate), turnover in tree species composition (beta diversity) was associated with topographic factors affecting water balance – solar elevation, insolation, and slope (Balvanera *et al.* 2002, Segura *et al.* 2002). To our knowledge, no such studies of SDTF species turnover on an elevation transect have been carried out in the West Indies. A better understanding of ecological patterns and processes throughout Neotropical SDTF requires filling information gaps for little-studied areas such as the West Indies (Sánchez-Azofeifa *et al.* 2005).

While groups such as moths (Chen *et al.* 2009), ants (Longino & Colwell 2011) and reptiles (McCain 2010) have been studied on tropical elevation gradients (see also references cited by Guo *et al.*), many studies of changes in animal community composition have concerned birds. In contrast with plant community studies emphasizing rate of change in species composition in relation to spatial patterns of environmental drivers, studies of tropical bird communities on elevation transects have placed a greater emphasis on determining whether competitive exclusion between species drives patterns of species turnover. These studies have broadly aimed to differentiate the direct effects of climate on physiology, the indirect effects of climate on habitat structure (e.g., vegetation changes with elevation), and the effects of competitive and other interactions among species in shaping the functional and taxonomic composition of tropical bird communities (Terborgh 1977, Blake & Loiselle 2000, Jankowski *et al.* 2013).

Only a few studies have considered the influence of both plant composition and vegetation structure on birds (Gillespie & Walter 2001) or other vertebrate communities (Stoner 2005) within SDTF, or in other life zones along tropical elevation gradients (Jankowski *et al.* 2012). In Costa Rica, for example, tropical bird community composition changed along a moisture gradient associated with habitat (forest) types, a gradient not entirely captured by elevation alone because of its complex relationship with precipitation (Jankowski *et al.* 2009). Some research in the West Indies has measured the vegetation characteristics associated with SDTF bird communities, although these examples contrasted bird communities between SDTF and other structurally and compositionally distinct vegetation types. In the northern Bahamas, winter bird communities occupying SDTF were distinctly different from those in pine woodlands on the same island (Franklin & Steadman 2013). On St John, U.S. Virgin Islands, on the other hand, the differences in winter bird communities between SDTF and moist forest were minor, although species were detected more frequently in mature moist forest, and certain fruiting plant species were associated with frugivorous species of birds (Steadman *et al.* 2009). Also in the West Indies, a rigorous survey of birds (from 100–1074 m elevation) in Puerto Rico from moist to very wet forest (no SDTF) revealed significant upward elevational shifts between 1998 and 2015 in 8 of the 21 species analyzed (Campos-Cerqueira *et al.* 2017).

Past environmental change and biogeographical factors may also shape bird community turnover on elevation gradients. Variation in SDTF bird communities on elevation gradients spanning both sides of the Andes in northwest Peru, for example, was interpreted to result at least in part from barriers to dispersal as well as the dynamic climate of the Pleistocene (Oswald & Steadman 2015, Oswald *et al.* 2016, Oswald *et al.* 2017). The effects of past changes, including prehistoric human impacts as well as paleoclimatic fluctuations, on animal distributions are often underappreciated (e.g., Steadman 2006, Steadman & Franklin 2015). Pertinent to our study, there is substantial fossil-based evidence for shifts in

elevation in Hispaniolan birds during pre-Columbian times (Steadman and Takano 2013). For example, two species characteristic of lower elevation dry forest on Hispaniola today (the endemic *Siphonorhis brewsteri* and the widespread *Zenaida aurita*) occur very commonly as late Holocene (1600 to 600 BP) fossils in a cave at 1800+ m elevation in Haiti, where the modern habitat is cloud forest and pine forest (Steadman & Takano 2013).

Here we focus on patterns of both plant and bird species composition associated with environmental gradients within SDTF over a small geographic area (a single mountain range) on a topographically complex West Indian island. Furthermore, we include all vascular plants, not just trees. Because our study area has a single regional species pool lacking major barriers to dispersal, we expect community variation to be related to environmental variation and species interactions. Our surveys took place on Hispaniola, a large Greater Antillean island comprising Haiti and the Dominican Republic. Given the extreme level of habitat loss in Haiti at all elevations, including evidence for ongoing species-level extinction of vertebrates (Hedges *et al.* 2018), we chose a mountain range in nearby Dominican Republic to document ecological communities in a locality with relatively little current human impact. Essentially all of the Sierra Martín García (SMG) is protected as a national park. A previous vegetation survey done in 2004 focused on the eastern and southern slopes of SMG (García *et al.* 2007). Our field efforts took place on the northwestern (leeward) slope over a wide range of elevations, thus complementing existing data, and developing a more comprehensive analysis of the biotic communities in this tropical dry forest setting.

Objectives of this study.---

By conducting coordinated plant and bird surveys along an elevation gradient on an isolated coastal mountain range, Sierra Martín García, Dominican Republic, we examined composition patterns in both plant and bird communities over a broad range of elevations occupied by SDTF. We specifically addressed these three questions:

1. Is the change in species composition of plant communities with elevation (turnover) gradual or abrupt in West Indian SDTF? We expected the turnover in species composition to be gradual within the single plant formation over this small geographical area (even though that formation occurs across an impressive elevation range).
2. Are compositional changes in the plant community related to climate? Because of the relationship between climate (temperature and precipitation regime) and elevation, the great range of elevation over which SDTF is found in the study area (31-884 m), and the association of SDTF plant species distributions with temperature and moisture gradients shown in previous studies, we expected the compositional changes in the ecological community to be related to climate.
3. Do the patterns of change differ between plant and bird communities? We expected that distributions of birds will show less turnover on the

elevation/climate gradient than those of plants because of their greater dispersal ability and the general structural similarity of the SDTF habitat along the gradient (which lacks major changes in plant formations or vegetation types) and in light of previous work showing tropical bird distributions on elevation gradients to be related to habitat structure.

Understanding contemporary biotic distributions over elevation gradients, as well as how they have changed through time, is important not just for addressing these ecological questions, but also for conservation planning under a regime of climate change and human impact.

METHODS

Study Area and Survey Design.---

Sierra Martín García (SMG) is a small, rather isolated mountain range in southwestern Dominican Republic (Fig. 1). Essentially the entire SMG, including the areas that we surveyed, is within Parque Nacional Sierra Martín García, consisting of 339 km² of land from sea level to the summit at 1350 m elevation (SEA/DED 1990). SMG is surrounded entirely by arid lowlands or the Caribbean Sea. Much larger and higher mountain ranges lie to the southwest (Sierra de Bahoruco), northwest (Sierra de Neiba), and northeast (Cordillera Central). The bioclimate of the region where SMG is located is considered tropical xeric below about 800 m (Cano *et al.* 2012). Our coordinated surveys of plants and birds across an elevation gradient on SMG focused on one slope exposure to assure a strong relationship between elevation and precipitation, not confounded by rain shadow effects, although vegetation data were available for both exposures.

Vegetation.---

From 9 to 17 November 2016, we collected data on plant community composition in Seasonally Dry Tropical Forest (SDTF) at 11 locations along the elevation gradient on the northwestern (leeward) flank of SMG (Fig. 1). We listed all vascular plant species' occurrences in 100-m² (50 x 2 m) plots (Braun-Blanquet 1932, Wilson 2012) based on field identifications. We also collected all taxa encountered, and our field identifications were later confirmed in the herbarium using La Flora de la Española (Liogier, 1981-1996) as well as comparative methods with previously collected herbarium specimens from various herbaria (FLAS, NY). Our plot-based methods were the same as those used for 37 georeferenced plots surveyed in 2004 (Garcia *et al.*, 2007) at other areas on the eastern and south-central windward flanks of SMG (Fig. 1); our analyses incorporate the Garcia *et al.* (2007) data as well, which also were compiled by DryFlor.org for trees and shrubs. We added all life forms directly from the data table in the original paper. We used a Garmin 60CSx GPS to determine the locations of our new plots (Table S1). Our list of plant species names was developed with assistance from the Taxonomic Name Resolution Service (tnrs.org) and by consulting (Acevedo-Rodríguez & Strong 2012), as well as recent taxonomic treatments for specific groups. Determination of plant species' distributions was carried out

by consulting Acevedo-Rodriguez and Strong (2012), as well as La Flora de la Española (Liogier, 1981–1996).

We extracted elevation and bioclimatic data (interpolated from 1960–1990 averages, 30 arc-sec grids -- about 1 km² resolution) for all 48 plot locations from Worldclim data (worldclim.org) (Hijmans *et al.* 2005) using the R package raster (Hijmans 2014). Elevation values were extracted from NASA's Shuttle Radar Topography Mission (STRM) 90-m resolution data. While elevation is an indirect gradient (Austin 2002) related to temperature (via the lapse rate) and precipitation (via orography), it can serve as a proxy for finer scale climate variation than what is represented in the climate grids. For the 48 plant plots, elevation ranged from 31–884 m, Mean Annual Precipitation (MAP) from 859–1081 mm, Mean Annual Temperature (MAT) from 23.0–26.0°C, and average minimum temperature of the coldest month (Tmin) from 15–18°C (but almost perfectly correlated with MAT; $r = 0.99$). As expected for these 48 locations, elevation had a negative relationship with MAT ($r = -0.88$), and a positive relationship with MAP ($r = 0.67$) (Fig. S1) with variation related to slope exposure. MAT and MAP were strongly negatively correlated ($r = -0.88$)

Multivariate community data analysis was used to identify patterns of species composition (co-occurring species) among sites, and trends in species composition along the elevation gradient for SMG dry forest. Methods were similar to those previously applied to other West Indian SDTF plot data (Franklin *et al.* 2015, Franklin *et al.* 2018). Hierarchical agglomerative clustering (Peet & Roberts 2013) using Jaccard distance and Ward's linkage was applied to species presence/absence data for 48 sites and 750 taxa. Differences among clusters were tested using analysis of variance based on 999 permutations (permanova) (Anderson 2001). Patterns of similarity in species composition were displayed using indirect ordination based on non-metric multidimensional scaling (NMS) (Clarke 1993); correlation of ordination axes with climate and elevation was calculated. Indicator species analysis (Dufrêne & Legendre 1997) was used to identify species associated with groups of plots defined by clustering. The frequencies of widespread species in all groups were calculated. We determined the amount of similarity in species composition that was associated with environment (climate variables) versus distance (geographical coordinates) by variance partitioning (Legendre 2008) using generalized dissimilarity modeling (e.g., Fitzpatrick *et al.* 2013).

Birds.---

We conducted bird surveys (point-counts) at SGM from 26 May to 9 June 2017, along the same elevation gradient as the 11 plant plots we had surveyed six months earlier. Each of the 33 point-counts for birds (GPS locations in Table S1) was performed on or within 300 m of one of the 11 plant plots, in highly similar habitat to that of the particular plant plot, yielding two to four point-counts per plant plot (Table S1). Some of the plant plots were too close to each other to allow room for more than two point-

counts per plant plot. Dominant/common tree species were identified for each point-count to confirm that the habitat represented that of the nearby plant plot. At least 200 m separated each bird point-count. All birds heard or seen within 100 m were recorded for a 10-minute period at each point. All point-counts were double-observer. During our first two days in the field, when we did only practice point-counts, we determined that bird activity subsided at 3 to 3.5 hours after sunrise, so we did no point-counts after that time. Never were more than four point-counts done in one morning. Each point was visited a single time. Once a bird was detected, the observers kept track of its location throughout the 10-minute period to avoid double-counting. In late May and early June, all of the birds recorded were resident (breeding species) rather than migrants. Nomenclature follows Chesser et al. (2018).

The bird community data, comprising species counts per point, also were analyzed using multivariate ordination methods to describe patterns of species composition and turnover on the elevation gradient. Hierarchical agglomerative clustering using Bray distance and Ward's linkage identified clusters of points with similar species composition; differences among clusters were tested using permanova. Indicator Species (IS) analysis (Dufrêne & Legendre 1997) was used to identify species associated with groups of points defined by clustering. Correlation of ordination axes (based on NMS) with climate and elevation was calculated. In addition, generalized additive models (GAM) were used to estimate the relationship between abundance and elevation for individual bird species (Wood 2006); a zero-inflated model with a Poisson link was used (Wenger & Freeman 2008). Because the ecological community had far fewer species of birds than plants, it was both practical and informative to estimate responses to the elevation gradient for individual species using GAMs, providing results that are easily interpretable and complimentary to the (multispecies) ordination. All statistical analyses were done using R (R Core Team 2018) and packages 'vegan', 'labdsv', and 'mgcv'.

RESULTS

Vegetation.--

There were 750 vascular plant taxa recorded in the 11 plots with 719 identified to species or variety, 30 to genus, and one to family (Table S2). Plant Clusters, defined by cutting the cluster dendrogram at a height (Ward's distance) of 1.1, divide the 48 plots into seven significantly different groups ($R^2=0.35$; $F=3.61$, $P<0.001$) based on species composition (Fig. S2). The groups (clusters) show considerable overlap in two-dimensional ordination (Fig. 2a), however, reflecting many shared species among groups. MAT ($R^2 = 0.26$; $P < 0.001$) and MAP ($R^2 = 0.41$; $P < 0.001$), and to a lesser extent elevation ($R^2 = 0.13$; $P = 0.054$), are correlated with ordination axes. All three show the strongest correlation with the first ordination axis (the main pattern of variation or species turnover among sites, NMS1, with plot scores

ranging from -1.7 to 1.5), but little variation on the second axis of compositional variation (NMS2).

Boxplots of the frequency distribution of environmental variables also showed that the clusters are more strongly differentiated with regard to MAP (Fig. S3A) than elevation (Fig. S3B). This stronger relationship of MAP with species composition suggests that, although the climate data are of coarse resolution relative to the size of the study area, they nonetheless capture the rain shadow effects of prevailing ESE winds on precipitation. For example, the four leeward plots that make up Plant Cluster 6 are the driest, although not lowest in elevation (Fig. S3), and are also very distinct in their species composition (Fig. 2a). We note as well that the other set of leeward plots (Plant Cluster 7) has the largest range of elevation of any cluster, reflecting how gradually the plant community changed with elevation on that dry leeward slope.

While plant species composition was related to the elevation and climate gradient, clusters also show strong spatial patterns, with nearby plots typically having similar composition (Fig. 2b). Variance partitioning shows that, of the 12% of explained variance in the community composition (measured by the dissimilarity matrix), most is explained by geography, i.e., distance (6%) and the interaction of climate and distance (spatially structured climate; 4%); only 2% is explained by spatially unstructured climatic variation. (Most of the observed variance in composition, 88%, is unexplained by climate or geography.)

Our Indicator Species analysis identifies 84 species with significant indicator values for one of the clusters of plots (Table S2); those with the highest Indicator Values (IV) for each cluster are listed in Table 1. Plant Cluster 1 consists of 14 low-elevation plots sampled by García et al. (2007) predominantly on the eastern (windward) flank of SMG. Plant Cluster 2 comprises seven mid-elevation plots sampled by García et al. (2007) also on the eastern side of SMG. All five Indicator Species with the highest IVs in Plant Clusters 1 and 2 are native, primarily endemic, woody taxa. Plant Cluster 3 consists of two lower-elevation plots sampled by García et al. (2007) on the eastern side of SMG, characterized by widespread species, with only one tree Indicator Species (*Celtis iguanaea*) identified. For Plant Cluster 4, which includes 8 plots across a wide range of intermediate elevations on SMG, the five Indicator Species with the highest IVs all are “weedy” herbaceous species. Plant Cluster 5 comprises 6 mid-elevation plots surveyed by García et al. (2007) on the southwestern flank of SMG (near the park’s ranger station), featuring the trees *Chionanthus ligustrinus*, *Oxandra lanceolata*, and *Coccoloba diversifolia*, and the naturalized (non-native) orchid *Oeceoclades maculata*.

Plant Cluster 6 is a distinct group consisting entirely of four plots that we surveyed in 2016 at low elevation on shale bedrock on the northwestern (leeward) side of SMG (Fig. 2b), with correspondingly very low MAP and high MAT. Many Indicator Species (27) were identified in Plant Cluster 6, but interestingly they were not predominantly tree taxa (Table S2). The tree taxa

found here are shared with other clusters. The Indicator Species include five Cactaceae and many herbaceous species. Plant Cluster 7 comprises seven plots also sampled in 2016 by the authors at mid- to high elevations on the leeward side of SMG (Fig. 2b); Indicator Species include the woody endemics *Sideroxylon horridum* and *Capparis domingensis*.

A number of common SDTF species occur in several clusters and most are not Indicator Species for any single cluster. Ignoring the unusual Plant Cluster 3 with only two plots, the trees *Bursera simaruba*, *Senna atomaria*, *Capparis ferruginea*, *Guaiacum officinale*, and *Senegalia angustifolia*, the shrub *Cynophalla flexuosa*, and the woody vine *Stigmaphyllon emarginatum* are found in all six other clusters, and therefore represent widespread species typical of SDTF throughout the SMG elevation gradient. Other species occur in all plots at all elevations except those in the low, dry Plant Cluster 6; these are the trees *Amyris elemifera*, *Eugenia foetida*, *Eugenia rhombea*, *Exostema caribaeum*, *Guaiacum sanctum*, *Randia aculeata* and *Vachellia macracantha* (Table 2). The 19 species that were found in 22 or more plant plots are all either Caribbean endemic (4) or widespread native (15) species; neither Hispaniolan endemics or non-native species were represented (Table 2).

Birds.---

Our point-counts recorded 30 indigenous species of birds (and no non-indigenous species), consisting of 9 Hispaniolan endemics, 9 other species endemic to the Caribbean Region, and 12 widespread species (Table S3). The mean number of species per point-count was 13.5, with no elevational trend in species richness. The first axis of the NMS ordination (Fig. 3) is strongly correlated (based on a posteriori fitting) with MAP ($r=0.99$) and MAT ($r=-0.99$), but the smaller range of ordination scores indicates less species turnover in birds than in plants. Bird point-counts 1-11, each associated with Plant Cluster 6, form the highly distinctive Bird Cluster A (Figs. 3, S4), situated at low elevation (Fig. 4) on shale bedrock. Four of the five Indicator Species identified for Bird Cluster A are widespread rather than endemic species (Table 3). Furthermore, all five Indicator Species for Bird Cluster A are habitat generalists that tolerate, if not prefer, areas of secondary forest or other disturbance. At higher elevations, with plant communities developed on limestone substrate (Plant Cluster 7), the three other defined bird communities (Bird Clusters B-D) are more strongly represented by Indicator Species that are endemic either to Hispaniola or at least to the Caribbean islands (Table 3). In fact, each of Bird Clusters B-D has one of Hispaniola's endemic genera of birds (*Microligea*, *Phaenicophilus*, *Nesocittes*) as an Indicator Species.

Direct ordination (Fig. S5) and zero-inflated Poisson GAM (regression-type) models of individual bird species abundance with elevation suggest a few strong associations with elevation and many weaker ones (Table 4; Fig. S6). The strongest associations are for species preferring low elevations, such as *Columbina passerina*, *Mimus polyglottos*, *Zenaida macroura*, and

Melanerpes striatus (Fig. 5). Two other species (*Todus subulatus*, *Coereba flaveola*) seem to have bimodal elevation trends in abundance, being least common at mid-elevations. All six of these species are habitat generalists, although their feeding guilds are diverse, including granivores (the two doves), omnivores/frugivores (mockingbird, woodpecker, tody), and a nectarivore (bananaquit).

DISCUSSION

We found that most changes in SDTF plant species composition along >800 m of elevation change in a single mountain range, Sierra Martín García (Dominican Republic), were gradual as we predicted, indicated by the overlapping species composition among clusters seen in ordination space and the large range of climatic conditions seen within some clusters. One cluster was quite distinct in climate (dry, warm) and species composition, but also occurred on a different geological substrate (shale) than all the others (on limestone). Plant community composition was more strongly related to climate than to elevation alone (elevation does not account for rain shadow effects on precipitation), in accordance with our second prediction. We did, however, find strong spatial patterning in plant community composition, with as much variation in composition explained by proximity as by climate. Nearby plots had similar composition, suggesting dispersal limitations, spatially structured disturbances, or both. Furthermore, much of the variation in plant species composition remained unexplained. Finally, the bird communities did show less turnover on the elevation gradient than plant communities; bird communities varied among locations, but this variation was not strongly correlated with elevation and climate, nor did the patterns of individual species reflect ordered replacement along the gradient as suggested by e.g., Terborgh (1977).

SDTF spans a large elevation range (>800 m) in Sierra Martín García. In fact, the maximum elevation (884 m) of an SDTF plot in our study area is the highest of any Neotropical dry forest plot in the West Indies (Franklin *et al.* 2018), reflecting the strong rain shadow effect at SMG, which may be fueled by its steep slopes and by lying directly on the southern coast of Hispaniola. Even at this high elevation, the estimated MAP (~1080 mm; Fig. S3a) is well below the upper limit of precipitation (~1800 mm) for SDF, as put forth by Lugo *et al.* (2006). The only higher elevation Neotropical SDF plots that we know of are continental, e.g., in the strong rain shadow of the inter-Andean valleys of South America (DRYFLOR *et al.* 2016). In spite of being represented by coarse scale maps in our study, the bioclimatic variables reflecting direct ecological gradients of moisture availability (MAP) and temperature (MAT) were more strongly related to ecological community composition than the finer-scale elevation data representing an indirect gradient. Continuous turnover in Neotropical SDF vascular plant species composition along an elevation gradient has also been observed elsewhere (Vázquez G. & Givnish 1998). Detailed examination of several plant groups in Bolivian cloud forest similarly found significant species turnover limits

between, but not within, major vegetation zones (Bach *et al.* 2007). Systematic and gradual changes in West Indian forest composition along an elevation gradient have been shown to reflect turnover in plant functional traits, at least for rain forest trees (Swenson *et al.* 2010). In contrast, studies that identify abrupt discontinuities in plant community composition on tropical mountains, even in the absence of substrate differences, typically span a much greater range of elevations, encompassing multiple Holdridge life zones or vegetation formations (Hemp 2006).

By restricting our study to a single region, we were able to identify environmental factors (MAP, MAT) affecting communities subjected to the same larger-scale biogeographical processes (Franklin *et al.* 2018). The SDTF plant communities in Sierra Martín García appear to be somewhat different from the SDTF flora described for nearby Sierra de Batoruco (Fisher-Meerow & Judd 1989), but also showed a great deal of geographically-structured fine-scale variation not explained by the elevation-climate gradient represented in our environmental data. This unexplained variation could result from spatially structured environmental factors not measured in our study (e.g., topoclimate, soil properties), human factors (land use history, other disturbance, (e.g., Gillespie *et al.* 2000)), and/or biotic factors such as dispersal limitations.

The most distinctive change in plant composition at SMG was associated with a geological boundary, namely the change from shale (Plant Cluster 6) to limestone bedrock (all other plant clusters; Figs. 2, S2). This change in substrate was reflected most strongly in a unique vegetation type (Plant Cluster 6) that also was occupied by a distinctive bird community (Bird Cluster A). Shale typically weathers to a clayey soil that provides more uniform edaphic microhabitats than limestone, whereas karstic weathering provides pinnacles, pits, and crevices that can block the sun, concentrate moisture, and thus fuel microhabitat heterogeneity (Zhang *et al.* 2014). As noted by Whittaker (1967), discontinuous changes in plant community composition are expected when environmental conditions have strong spatial discontinuities, especially those with sharp boundaries such as disturbance (including land use) and soil parent material (geological substrate).

Bird species show a weaker relationship to elevation/climate than plants at SMG, where both plant and bird communities are rich with species endemic to Hispaniola or at least to the West Indies. Our results suggest a clear response of SDTF plants to elevation-mediated climate gradients, (as also found across wetter Greater Antillean life zones by Blake & Loiselle 2000). The more complex (and less well understood) responses of birds may be due in part to the vegetation itself (e.g., Jankowski *et al.* 2009), and perhaps also to each other ((interspecific interactions such as competition, e.g., Terborgh & Weske 1975), all within a framework of past and current human impact. We did find that endemic species were largely restricted to relatively higher elevations, as has been observed for birds and other vertebrates elsewhere in the tropics (e.g., Jankowski & Rabenold 2007).

At SMG, one suite of bird species (Bird Cluster A), characterized by habitat generalists, was confined to the lowest elevation sites with a distinctive plant community (Plant Cluster 6), although otherwise the bird species composition showed only a weak relationship to elevation. Other groups of sites with similar bird composition were detected, but species turnover was unrelated to the elevation gradient, suggesting that these patterns might be related to finer scale environmental variation (for example, habitat structure) or to other factors. This similarity in composition within a region has been noted in other Neotropical SDTF bird communities and attributed to the dispersal ability of the species (Oswald *et al.* 2016). This lack of clear turnover in many SDTF bird communities may reflect selection among surviving species to be flexible to dynamic conditions that include climate change as well as habitat disturbance, whether due to tropical storms, landslides, or human causes. It may be that forest physical structure, which is not the topic of this paper, did not vary much across our 11 plant plots on the leeward slope of SMG. Perhaps forest structure and diversity, rather than plant species composition *per se*, has a stronger influence on the SMG bird community (e.g., Terborgh 1977, Gillespie & Walter 2001), a potentially fruitful avenue for new research.

We note that a previous bird survey in SMG (Almonte-Espinosa 2017) included a broad range of habitats on multiple slopes of the mountain range, among which her habitat categories of BTM (*bosque de transición de áreas medias*), BS (*bosque seco*), and MES (*monte espinosa subtropical*) probably are ones that we would regard as SDTF. Of the 30 species of birds that we recorded in May-June 2017, the habitat categories of Almonte-Espinosa (2017) included 21 of the same species in BTM, 20 in BS, and 20 in MES. Without knowing the exact locations of her surveys, more detailed comparisons are not possible.

The contemporary ecological patterns observed in this study can be seen from a longer-term perspective. Paleontological evidence from across the West Indies reveals major late Quaternary changes in the abundance and distribution of birds and other vertebrates, including their inter-island distributions as well as intra-island elevation ranges (e.g., Pregill *et al.* 1994, Steadman & Takano 2013, Steadman *et al.* 2015, Cooke *et al.* 2017, Soto-Centeno *et al.* 2017). These and other studies show that numerous species were lost on the islands at the end of the Pleistocene (a period of major glacial-interglacial change in climate and sea level) and also during the Holocene from human activities. From Hispaniola in particular, various species of rails, woodcocks, eagles, owls, and caracaras already have been lost, especially after human arrival (Olson 1974, 1976, Steadman & Takano 2013, Suárez & Olson 2015, Takano & Steadman 2015). It is likely that the surviving species of birds are more labile in their habitat preferences and thus more tolerant of habitat disturbance. Two dramatic examples (are the endemic Least Pauraque *Siphonorhis brewsteri* and the widespread Zenaida Dove *Zenaida aurita*), which are considered characteristic of low elevations (<1000 m) on Hispaniola today. As recently as ~1,000 years ago, however,

both species occurred very commonly as fossils at much higher elevations (~1820 m) in a cave called Trou Jean Paul, which is ~100 km west of SMG (Steadman & Takano 2013, Takano & Steadman 2015).

Prehistoric habitat alteration (forest clearing) by people may have fueled these past upslope distributions, which may be taking place again in areas with modern habitat alteration. In fact, of the 18 non-passerine species that we recorded in 2017 at SMG, 9 (50%) of them occurred as fossils from Trou Jean Paul; four of these species (*Zenaida aurita*, *Z. macroura*, *Columbina passerina*, and *Mellisuga minima*) are unknown from such high elevations on Hispaniola today (Keith *et al.* 2003, Rimmer *et al.* 2005).

SDTF has been widely cleared and degraded on a global scale (Gillespie *et al.* 2012), with species in this biome being sensitive to climate on short and long time scales (Pennington *et al.* 2006b, Blundo *et al.* 2012). Neotropical SDTF sustains a diverse flora and fauna, fueled by endemism and species turnover at multiple scales (Pennington *et al.* 2006a, Oswald *et al.* 2016, Oswald *et al.* 2017). West Indian SDTF harbors particularly high endemism for many groups of plants and animals as a result of isolation as well as the complex historical biogeography of the Greater Antilles (Iturralde-Vinent *et al.* 2000, Keith *et al.* 2003, Santiago-Valentin & Olmstead 2004). The community ecology of West Indian SDTF is relatively poorly understood compared to that on the American continents (Sánchez-Azofeifa *et al.* 2005). Here we addressed this knowledge gap by describing in detail a rich community of SDTF plants and birds found within a single coastal mountain range.

The protected area of SMG is critically important to preserve Caribbean SDTF and its endemic species of plants, invertebrates, and vertebrates. Other studies have shown that large protected areas can counteract the effects of human disturbance on SDTF vertebrate biodiversity (Gillespie & Walter 2001). Our research sets a baseline to help understand how species will respond to future habitat modification and climate change on Hispaniola. With extreme levels of habitat loss already fueling considerable extinction of amphibians and reptiles in the Haitian portion of Hispaniola (Hedges *et al.* 2018), it is more important than ever to survey any groups of Hispaniolan organisms to learn about their biology and begin to curtail the processes underlying their declines.

ACKNOWLEDGMENTS

For permits to conduct this research and other courtesies, we thank El Medio Ambiente, Gabriel de los Santos and Carlos Suriel (Museo Nacional de Historia Natural “Prof. Eugenio de Jesús Marcano”) and Lemuel Familia (JBSD). Support from the Jardín Botánico Nacional “Sr. Rafael Moscoso” (Dept. de Botánica) was invaluable for completing this work. We thank Dr. R. García and colleagues for publishing their data (in 2007) for others to use, and DRYFLOR for capturing these data digitally. Several herbaria used here were essential for confirming our specimen identifications (FLAS, JBSD and NY-online). Funding was provided by the Florida Museum of Natural History

Biodiversity Institute, the National Science Foundation (grant GSS-1461496 to DWS and JF), and the Desert Botanical Garden.

DATA AVAILABILITY

The data used in this study are archived at the Dryad Digital Repository (DOI doi:10.5061/dryad.v6m6454).

LITERATURE CITED

- ACEVEDO-RODRIGUEZ, P., AND M. T. STRONG. 2012. Catalogue of seed plants of the West Indies. *Smithson Contrib Bot* 98: 1-1192.
- AIBA, S.-I., AND K. KITAYAMA. 1999. Structure, composition and species diversity in an altitude-substrate matrix of rain forest tree communities on Mount Kinabalu, Borneo. *Plant Ecology* 140: 139-157.
- ALMONTE-ESPINOSA, H. 2017. Caracterización de la comunidad de aves en el Parque Nacional Sierra Martín García, República Dominicana. *Novitates Caribaea* 11: 79-88.
- ANDERSON, M. J. 2001. A new method for non-parametric multivariate analysis of variance. *Austr. Ecol.* 26: 32-46.
- AUSTIN, M. P. 2002. Spatial prediction of species distribution: an interface between ecological theory and statistical modelling. *Ecological Modelling* 157: 101-118.
- BACH, K., M. KESSLER, AND S. GRADSTEIN. 2007. A simulation approach to determine statistical significance of species turnover peaks in a species-rich tropical cloud forest. *Divers Distrib* 13: 863-870.
- BALVANERA, P., E. LOTT, G. SEGURA, C. SIEBE, AND A. ISLAS. 2002. Patterns of β -diversity in a Mexican tropical dry forest. *J. Veg. Sci.* 13: 145-158.
- BLAKE, J. G., AND B. A. LOISELLE. 2000. Diversity of birds along an elevational gradient in the Cordillera Central, Costa Rica. *The Auk* 117: 663-686.
- BLUNDO, C., L. R. MALIZIA, J. G. BLAKE, AND A. D. BROWN. 2012. Tree species distribution in Andean forests: influence of regional and local factors. *J. Trop. Ecol.* 28: 83-95.
- BRAUN-BLANQUET, J. 1932. *Plant sociology; The study of plant communities*. McGraw-Hill, New York, NY.
- CAMPOS-CERQUEIRA, M., W. J. ARENDT, J. M. WUNDERLE JR, AND T. M. AIDE. 2017. Have bird distributions shifted along an elevational gradient on a tropical mountain? *Ecol Evol* 7: 9914-9924.
- CANO, E., A. CANO-ORTIZ, S. DEL RÍO GONZÁLEZ, J. ALATORRE COBOS, AND A. VELOZ. 2012. Bioclimatic map of the Dominican Republic. *Plant Sociology* 49: 81-90.
- CHEN, I.-C., H.-J. SHIU, S. BENEDICK, J. D. HOLLOWAY, V. K. CHEY, H. S. BARLOW, J. K. HILL, AND C. D. THOMAS. 2009. Elevation increases in moth assemblages over 42 years on a tropical mountain. *Proc. Nat. Acad. Sci. USA* 106: 1479-1483.
- CHESSER, R. T., K. J. BURNS, C. CICERO, J. L. DUNN, A. W. KRATTER, I. J. LOVETTE, P. C. RASMUSSEN, J. REMSEN JR, D. F. STOTZ, AND B. M. WINGER. 2018. Fifty-ninth Supplement to the American Ornithological Society's Check-list of North American Birds. *The Auk* 135: 798-813.
- CLARKE, K. R. 1993. Non-parametric multivariate analyses of changes in community structure. *J. Ecol.* 18: 117-143.
- COOKE, S. B., L. M. DÁVALOS, A. M. MYCHAJLIW, S. T. TURVEY, AND N. S. UPHAM. 2017. Anthropogenic extinction dominates Holocene declines of West Indian mammals. *Annu Rev Ecol Evol Syst* 48: 301-327.

DRYFLOR, K. BANDA-R, A. DELGADO-SALINAS, K. G. DEXTER, R. LINARES-PALOMINO, A. OLIVEIRA-FILHO, D. PRADO, M. PULLAN, C. QUINTANA, R. RIINA, G. M. RODRÍGUEZ M., J. WEINTRITT, P. ACEVEDO-RODRÍGUEZ, J. ADARVE, E. ÁLVAREZ, A. ARANGUREN B., J. C. ARTEAGA, G. AYMARD, A. CASTAÑO, N. CEBALLOS-MAGO, Á. COGOLLO, H. CUADROS, F. DELGADO, W. DEVIA, H. DUEÑAS, L. FAJARDO, Á. FERNÁNDEZ, M. Á. FERNÁNDEZ, J. FRANKLIN, E. H. FREID, L. A. GALETTI, R. GONTO, R. GONZÁLEZ-M., R. GRAVESON, E. H. HELMER, Á. IDÁRRAGA, R. LÓPEZ, H. MARCANO-VEGA, O. G. MARTÍNEZ, H. M. MATURO, M. McDONALD, K. McLAREN, O. MELO, F. MIJARES, V. MOGNI, D. MOLINA, N. D. P. MORENO, J. M. NASSAR, D. M. NEVES, L. J. OAKLEY, M. OATHAM, A. R. OLVERA-LUNA, F. F. PEZZINI, O. J. R. DOMINGUEZ, M. E. RÍOS, O. RIVERA, N. RODRÍGUEZ, A. ROJAS, T. SÄRKINEN, R. SÁNCHEZ, M. SMITH, C. VARGAS, B. VILLANUEVA, AND R. T. PENNINGTON. 2016. Plant diversity patterns in neotropical dry forests and their conservation implications. *Science* 353: 1383-1387.

DUFRENE, M., AND P. LEGENDRE. 1997. Species assemblages and indicator species: the need for a flexible asymmetrical approach. *Ecol. Monogr.* 67: 345-366.

FISHER-MEEROW, L., AND W. JUDD. 1989. floristic study of five sites along an elevational transect in the Sierra de Baoruco, Prov. Pedernales, Dominican Republic. *Moscosa*.

FITZPATRICK, M. C., N. J. SANDERS, S. NORMAND, J.-C. SVENNING, S. FERRIER, A. D. GOVE, AND R. R. DUNN. 2013. Environmental and historical imprints on beta diversity: insights from variation in rates of species turnover along gradients. *Proc R Soc Lond B Biol Sci* 280: 20131201.

FRANKLIN, J., R. ANDRADE, M. L. DANIELS, P. FAIRBAIRN, M. C. FANDINO, T. W. GILLESPIE, G. GONZÁLEZ, O. GONZALEZ, D. IMBERT, V. KAPO, D. L. KELLY, H. MARCANO-VEGA, E. MELÉNDEZ-ACKERMAN, K. P. McLAREN, M. A. McDONALD, J. RIPPLINGER, J. ROJAS-SANDOVAL, M. S. ROSS, J. RUIZ, D. W. STEADMAN, E. V. J. TANNER, I. TERRILL, AND M. VENNETIER. 2018. Geographical ecology of dry forest tree communities in the West Indies. *J. Biogeogr.* 45: 1168-1181.

FRANKLIN, J., J. RIPPLINGER, H. MARCANO-VEGA, E. FREID, AND D. W. STEADMAN. 2015. Regional variation in Caribbean dry forest tree species composition. *Plant Ecology* 216: 873-886.

FRANKLIN, J., AND D. W. STEADMAN. 2013. The winter bird communities in pine woodland vs. broadleaf forest on Abaco, The Bahamas. *Caribbean Naturalist* 3: 1-18.

GARCÍA, R., B. PEGUERO, T. CLASE, A. VELOZ, F. JIMÉNEZ, AND M. MEJÍAS. 2007. Flora y vegetación de las zonas áridas de la Sierra Martín García, República Dominicana. *Moscosa* 15: 5-60.

GENTRY, A. H. 1988. Changes in plant community diversity and floristic composition on environmental and geographical gradients. *Ann. Missouri Bot. Gard.* 75: 1-34.

GILLESPIE, T. W., A. GRIJALVA, AND C. N. FARRIS. 2000. Diversity, composition, and structure of tropical dry forests in Central America. *Plant Ecology* 147: 37-47.

GILLESPIE, T. W., B. LIPKIN, L. SULLIVAN, D. R. BENOWITZ, S. PAU, AND G. KEPPEL. 2012. The rarest and least protected forests in biodiversity hotspots. *Biodivers Conserv* 21: 3597-3611.

GILLESPIE, T. W., AND H. WALTER. 2001. Distribution of bird species richness at a regional scale in tropical dry forest of Central America. *J. Biogeogr.* 28: 651-662.

GLEASON, H. A. 1926. The individualistic concept of the plant association. *Bull Torrey Bot Club* 53: 7-26.

GUO, Q., D. A. KELT, Z. SUN, H. LIU, L. HU, H. REN, AND J. WEN. 2013. Global variation in elevational diversity patterns. *Scientific reports* 3: 3007.

HEDGES, S. B., W. B. COHEN, J. TIMYAN, AND Z. YANG. 2018. Haiti's biodiversity threatened by nearly complete loss of primary forest. *Proc. Nat. Acad. Sci. USA* 115: 11850-11855.

- HEMP, A. 2006. Continuum or zonation? Altitudinal gradients in the forest vegetation of Mt. Kilimanjaro. *Plant Ecology* 184: 27-42.
- HIJMANS, R. J. 2014. raster: Geographic data analysis and modeling. R package version 2.3-0. <http://CRAN.R-project.org/package=raster>.
- HIJMANS, R. J., S. E. CAMERON, J. L. PARRA, P. G. JONES, AND A. JARVIS. 2005. Very high resolution interpolated climate surfaces for global land areas. *Int J Climatol* 25: 1965-1978.
- HOLDRIDGE, L. 1947. Determination of world plant formations from simple climatic data. *Science* 105: 367-368.
- ITURRALDE-VINENT, M. A., R. D. MACPHEE, S. D. FRANCO, R. ROJAS-CONSUEGRA, W. SUÁREZ, AND A. LOMBA. 2000. Las Breas de San Felipe, a Quaternary fossiliferous asphalt seep near Martí (Matanzas Province, Cuba). *Caribb J Sci* 36: 300-313.
- JANKOWSKI, J. E., A. L. CIECKA, N. Y. MEYER, AND K. N. RABENOLD. 2009. Beta diversity along environmental gradients: implications of habitat specialization in tropical montane landscapes. *J. Animal Ecol.* 78: 315-327.
- JANKOWSKI, J. E., G. A. LONDOÑO, S. K. ROBINSON, AND M. A. CHAPPELL. 2013. Exploring the role of physiology and biotic interactions in determining elevational ranges of tropical animals. *Ecography* 13: 1-12.
- JANKOWSKI, J. E., C. L. MERKORD, W. F. RIOS, K. G. CABRERA, N. S. REVILLA, AND M. R. SILMA. 2012. The relationship of tropical bird communities to tree species composition and vegetation structure along an Andean elevational gradient. *J. Biogeogr.*
- JANKOWSKI, J. E., AND K. N. RABENOLD. 2007. Endemism and local rarity in birds of neotropical montane rainforest. *Biol. Conserv.* 138: 453-463.
- KAHLE, D., AND H. WICKHAM. 2013. ggmap: Spatial Visualization with ggplot2. *R Journal* 5: 144-161.
- KEITH, A. R., J. W. WILEY, S. C. LATTA, AND J. A. OTTENWALDER. 2003. The birds of Hispaniola (Haiti and the Dominican Republic). *British Ornithologists' Union No. 21*, Tring, UK.
- KÖRNER, C. 2007. The use of 'altitude' in ecological research. *Trends Ecol Evol* 22: 569-574.
- LEGENDRE, P. 2008. Studying beta diversity: ecological variation partitioning by multiple regression and canonical analysis. *Journal of Plant Ecology* 1: 3-8.
- LIOGIER, A. H. 1981. Antillean Studies I. Flora of Hispaniola. *Phytologia Memoirs* III. Moldenke and Moldenke, New Jersey.
- LIOGIER, A. H. 1983. La Flora de la Española II. Universidad Central del Este, R.D., San Pedro de Macorís.
- LIOGIER, A. H. 1985. La Flora de la Española III. San Pedro de Macorís, Universidad Central del Este, R.D.
- LIOGIER, A. H. 1986. La Flora de la Española IV. San Pedro de Macorís, Universidad Central del Este, R.D.
- LIOGIER, A. H. 1989. La Flora de la Española V. San Pedro de Macorís, Universidad Central del Este, R.D.
- LIOGIER, A. H. 1994. La Flora de la Española VI. San Pedro de Macorís, Universidad Central del Este, R.D.
- LIOGIER, A. H. 1995. La Flora de la Española VII. San Pedro de Macorís, Universidad Central del Este, R.D.
- LIOGIER, A. H. 1996. La Flora de la Española VIII. San Pedro de Macorís, Universidad Central del Este, R.D.

LONGINO, J. T., AND R. K. COLWELL. 2011. Density compensation, species composition, and richness of ants on a neotropical elevational gradient. *Ecosphere* 2: 1-20.

LUGO, A. E., E. MEDINA, J. C. TREJO-TORRES, AND E. HELMER. 2006. Botanical and ecological basis for the resilience of Antillean Dry Forests. *In* R. T. Pennington, G. P. Lewis and J. A. Ratter (Eds.). *Neotropical savannas and seasonally dry forests*, pp. 359-381. CRC Press, Boca Raton, FL.

MALHI, Y., M. SILMAN, N. SALINAS, M. BUSH, P. MEIR, AND S. SAATCHI. 2010. Introduction: elevation gradients in the tropics: laboratories for ecosystem ecology and global change research. *Glob. Change Biol.* 16: 3171-3175.

MARTIN, P. H., AND T. J. FAHEY. 2014. Mesoclimatic patterns shape the striking vegetation mosaic in the Cordillera Central, Dominican Republic. *Arctic, Antarctic, and Alpine Research* 46: 755-765.

MARTIN, P. H., R. E. SHERMAN, AND T. J. FAHEY. 2007. Tropical montane forest ecotones: climate gradients, natural disturbance, and vegetation zonation in the Cordillera Central, Dominican Republic. *J. Biogeogr.* 34: 1792-1806.

MCCAIN, C. M. 2010. Global analysis of reptile elevational diversity. *Glob Ecol Biogeogr* 19: 541-553.

OLSON, S. L. 1974. A new species of *Nesotrochis* from Hispaniola, with notes on other fossil rails from the West Indies (Aves: Rallidae). *Proceedings of the Biological Society of Washington*.

OLSON, S. L. 1976. A new species of *Milvago* from Hispaniola, with notes on other fossil caracaras from the West Indies (Aves: Falconidae). *Proceedings of the Biological Society of Washington*.

OSWALD, J. A., J. G. BURLEIGH, D. W. STEADMAN, S. K. ROBINSON, AND A. W. KRATTER. 2016. Historical climatic variability and geographical barriers as drivers of community composition in a biodiversity hotspot. *J. Biogeogr.* 43: 123-133.

OSWALD, J. A., I. OVERCAST, W. M. MAUCK III, M. J. ANDERSEN, AND B. T. SMITH. 2017. Isolation with asymmetric gene flow during the nonsynchronous divergence of dry forest birds. *Mol Ecol* 26: 1386-1400.

OSWALD, J. A., AND D. W. STEADMAN. 2015. The changing diversity and distribution of dry forest passerine birds in northwestern Peru since the last ice age. *The Auk* 132: 836-862.

PEET, R. K., AND D. W. ROBERTS. 2013. Classification of natural and semi-natural vegetation. *In* E. van der Maarel and J. Franklin (Eds.). *Vegetation Ecology*, pp. 28-70. Wiley-Blackwell, Chichester, UK.

PENNINGTON, R. T., M. LAVIN, AND A. OLIVEIRA-FILHO. 2009. Woody plant diversity, evolution, and ecology in the tropics: perspectives from seasonally dry tropical forests. *Annu Rev Ecol Evol Syst* 40: 437-457.

PENNINGTON, R. T., J. A. RATTER, AND G. P. LEWIS. 2006a. A overview of the plant diversity, biogeography and conservation of neotropical savannas and seasonally dry forests. *In* R. T. Pennington, G. P. Lewis and J. A. Ratter (Eds.). *Neotropical savannas and seasonally dry forests: plant diversity, biogeography and conservation.* , pp. 1-29. CRC Press, Boca Raton, FL.

PENNINGTON, R. T., J. E. RICHARDSON, AND M. LAVIN. 2006b. Insights into the historical construction of species-rich biomes from dated plant phylogenies, neutral ecological theory and phylogenetic community structure. *New Phytologist* 172: 605-616.

PREGILL, G. K., D. W. STEADMAN, AND D. R. WATTERS. 1994. Late Quaternary vertebrate faunas of the Lesser Antilles: Historical components of Caribbean biogeography. *Bull Carnegi Mus Nat Hist* 30: 1-51.

PRIETO-TORRES, D. A., O. R. ROJAS-SOTO, E. BONACCORSO, D. SANTIAGO-ALARCON, AND A. G. NAVARRO-SIGÜENZA. 2018. Distributional patterns of Neotropical seasonally dry forest birds: a biogeographical regionalization. *Cladistics*: doi:10.1111/cla.12366.

R CORE TEAM. 2018. R: A language and environment for statistical computing. <http://www.R-project.org>. R Foundation for Statistical Computing, Vienna, Austria.

RIMMER, C. C., J. M. TOWNSEND, A. K. TOWNSEND, E. M. FERNÁNDEZ, AND J. ALMONTE. 2005. Avian diversity, abundance, and conservation status in the Macaya Biosphere Reserve of Haiti. *Ornitología Neotropical* 16: 219-230.

SÁNCHEZ-AZOFFEIFA, G. A., M. QUESADA, J. P. RODRÍGUEZ, J. M. NASSAR, K. E. STONER, A. CASTILLO, T. GARVIN, E. L. ZENT, J. C. CALVO-ALVARADO, AND M. E. KALACSKA. 2005. Research priorities for Neotropical dry forests 1. *Biotropica: The Journal of Biology and Conservation* 37: 477-485.

SANTIAGO-VALENTIN, E., AND R. G. OLMSTEAD. 2004. Historical biogeography of Caribbean plants: introduction to current knowledge and possibilities from a phylogenetic perspective. *Taxon* 53: 299-319.

SEA/DED. 1990. Evaluación de los recursos naturales en la Sierra Martín García y Bahía de Neiba. Secretaría de Estado de Agricultura y Servicio Alemán de Cooperación Social-Técnica, Santo Domingo, República Dominicana.

SEGURA, G., P. BALVANERA, E. DURÁN, AND A. PÉREZ. 2002. Tree community structure and stem mortality along a water availability gradient in a Mexican tropical dry forest. *Plant Ecology* 169: 259-271.

SOTO-CENTENO, J. A., N. B. SIMMONS, AND D. W. STEADMAN. 2017. The bat community of Haiti and evidence for its long-term persistence at high elevations. *PloS one* 12: e0178066.

STEADMAN, D. W. 2006. Extinction and biogeography of tropical Pacific birds. University of Chicago Press, Chicago.

STEADMAN, D. W., N. A. ALBURY, B. KAKUK, J. I. MEAD, J. A. SOTO-CENTENO, H. M. SINGLETON, AND J. FRANKLIN. 2015. Vertebrate community on an ice-age Caribbean island. *Proc. Nat. Acad. Sci. USA* 112: E5963-E5971

STEADMAN, D. W., AND J. FRANKLIN. 2015. Changes in an insular bird community since the late Pleistocene. *J. Biogeogr.* 42: 426-438.

STEADMAN, D. W., J. R. MONTAMBAULT, S. K. ROBINSON, S. N. OSWALT, T. J. BRANDEIS, G. LONDONO, M. J. REETZ, W. M. SCHLESKY, N. A. WRIGHT, A. E. MARTINEZ, AND J. SMITH. 2009. Relative abundance, habitat and long-term population changes of wintering and resident landbirds on St. John, U.S. Virgin Islands. *Wilson J Ornithol* 121: 41-53.

STEADMAN, D. W., AND O. M. TAKANO. 2013. A late-Holocene bird community from Hispaniola: Refining the chronology of vertebrate extinction in the West Indies. *The Holocene* 23: 936-944.

STONER, K. E. 2005. Phyllostomid Bat Community Structure and Abundance in Two Contrasting Tropical Dry Forests1. *Biotropica* 37: 591-599.

SUÁREZ, W., AND S. L. OLSON. 2015. Systematics and distribution of the giant fossil barn owls of the West Indies (Aves: Strigiformes: Tytonidae).

SWENSON, N. G., P. ANGLADA-CORDERO, AND J. A. BARONE. 2010. Deterministic tropical tree community turnover: evidence from patterns of functional beta diversity along an elevational gradient. *Proc Roy Soc B: Biol Sci* 278: 877-884.

TAKANO, O. M., AND D. W. STEADMAN. 2015. A new species of Woodcock (Aves: Scolopacidae: *Scolopax*) from Hispaniola, West Indies. *Zootaxa* 4032: 117-126.

TERBORGH, J. 1971. Distribution on environmental gradients: theory and a preliminary interpretation of distributional patterns in the avifauna of the Cordillera Vilcabamba, Peru. *Ecology* 52: 23-40.

- TERBORGH, J. 1977. Bird species diversity on an Andean elevational gradient. *Ecology* 58: 1007-1019.
- TERBORGH, J., AND J. S. WESKE. 1975. The role of competition in the distribution of Andean birds. *Ecology* 56: 562-576.
- VÁZQUEZ G., J. A., AND T. J. GIVNISH. 1998. Altitudinal gradients in tropical forest composition, structure, and diversity in the Sierra de Manantlán. *J. Ecol.* 86: 999-1020.
- VON HUMBOLDT, A., AND A. BONPLAND. 1805. *Essai sur la géographie des plantes*. Chez Lerault, Schoell et Compagnie, Libraires, Paris.
- WENGER, S. J., AND M. C. FREEMAN. 2008. Estimating species occurrence, abundance, and detection probability using zero-inflated distributions. *Ecology* 89: 2953-2959.
- WHITTAKER, R. H. 1956. Vegetation of the great smoky mountains. *Ecol. Monogr.* 26: 1-80.
- WHITTAKER, R. H. 1967. Gradient analysis of vegetation. *Biological Reviews* 42: 207-264.
- WHITTAKER, R. H., AND W. A. NIERING. 1968. Vegetation of the Santa Catalina Mountains, Arizona: IV. Limestone and acid soils. *The Journal of Ecology*: 523-544.
- WILSON, J. B. 2012. Species presence/absence sometimes represents a plant community as well as species abundances do, or better. *J. Veg. Sci.* 23: 1013-1023.
- WOOD, S. N. 2006. *Generalized Additive Models: An Introduction with R*. CRC Press, New York.
- ZHANG, Z., B. HU, AND G. HU. 2014. Spatial heterogeneity of soil chemical properties in a subtropical karst forest, southwest China. *The Scientific World Journal* 2014: Article ID 473651.

TABLE 1. Top five Indicator Species of plants for each Cluster, or all species for which Indicator Value > 0.3, whichever is greater (p = probability value).

Species	Life Form	Status	Indicator Value	p
Cluster 1				
<i>Coccoloba flavescens</i>	shrub/ tree	HE	0.6667	0.001
<i>Calliandra haematomma</i> var. <i>haematomma</i>	shrub	CE	0.4966	0.024
<i>Scolosanthus acanthodes</i>	shrub	HE	0.3958	0.05
<i>Randia aculeata</i>	shrub	W	0.3599	0.001
<i>Maytenus buxifolia</i>	Tree	CE	0.3222	0.005
Cluster 2				
<i>Trichilia hirta</i>	tree	W	0.6127	0.007
<i>Ziziphus rhodoxylon</i>	shrub/ tree	CE	0.6122	0.001
<i>Rauvolfia nitida</i>	shrub	CE	0.6061	0.009
<i>Tabernaemontana citrifolia</i>	tree	CE	0.5614	0.009
<i>Coccothrinax argentea</i>	tree	W	0.5556	0.021
Cluster 3				
<i>Callisia monandra</i>	herb	W	0.5000	0.042
<i>Celtis iguanaea</i>	tree	W	0.5000	0.042
<i>Rhynchosia pyramidalis</i>	vine	W	0.5000	0.034
<i>Centrosema pubescens</i>	vine	W	0.4000	0.043
<i>Scleria lithosperma</i>	herb	W	0.3261	0.034
Cluster 4				
<i>Dalea carthagenensis</i>	herb	W	0.6250	0.01
<i>Bastardia viscosa</i>	herb	W	0.572	0.017
<i>Eragrostis barrelieri</i>	herb	W	0.5648	0.016
<i>Hibiscus phoeniceus</i>	herb	W	0.5648	0.011
<i>Setaria vulpiseta</i>	herb	W	0.5648	0.014
Cluster 5				
<i>Chionanthus ligustrinus</i>	tree	CE	0.5333	0.019
<i>Oxandra lanceolata</i>	tree	CE	0.5333	0.005
<i>Oeceoclades maculata</i>	herb	NN	0.5000	0.009
<i>Coccoloba diversifolia</i>	shrub/ tree	W	0.4105	0.044
<i>Bursera simaruba</i>	tree	W	0.2420	0.001
Cluster 6				
<i>Matelea viridivenia</i>	vine	HE	0.7500	0.005
<i>Pectis linearis</i>	herb	W	0.7500	0.002
<i>Tephrosia cinerea</i>	herb	W	0.7500	0.003
<i>Tribulus terrestris</i>	herb	NN	0.7500	0.003
<i>Herissantia crispa</i>	herb	W	0.7273	0.002
<i>Leptocereus paniculatus</i>	tree	HE	0.7273	0.001
<i>Melocactus lemairei</i>	shrub	HE	0.7137	0.001

Species	Life Form	Status	Indicator Value	p
<i>Stenocereus fimbriatus</i>	tree	W	0.6888	0.004
<i>Tournefortia stenophylla</i>	shrub	CE	0.6888	0.009
<i>Crossopetalum decussatum</i>	shrub	HE	0.6300	0.009
<i>Phyllostylon rhamnoides</i>	tree	W	0.5911	0.001
<i>Bothriochloa pertusa</i>	herb	NN	0.5625	0.007
<i>Mentzelia aspera</i>	herb	W	0.5625	0.006
<i>Heliotropium angiospermum</i>	herb	W	0.5451	0.003
<i>Desmodium glabrum</i>	herb	W	0.5000	0.02
Cluster 7				
<i>Sideroxylon horridum</i>	tree	CE	0.5714	0.008
<i>Myrcianthes fragrans</i>	shrub/ tree	W	0.4286	0.011
<i>Talinum paniculatum</i>	herb	W	0.4286	0.017
<i>Capparis domingensis</i>	shrub	HE	0.4286	0.015
<i>Cordia globosa</i>	shrub	W	0.3983	0.037

Status categories: HE, Hispaniolan endemic; CE, Caribbean endemic; W, widespread (islands and continents); NN, non-native.

TABLE 2. Commonly-occurring species of plants, found in 22 or more (Freq=frequency) of the 48 plots, listed in order of frequency, showing the proportion of the N plots in which they are found for each Plant Cluster (Clus1-Clus7).

	Life form	Status	Freq	Clus 1	Clus 2	Clus 3	Clus 4	Clus 5	Clus 6	Clus 7
Species			(N)	15	6	2	8	6	4	7
<i>Bursera simaruba</i>	tree	W	33	0.73	0.67	0.00	0.63	1.00	0.25	0.86
<i>Senna atomaria</i>	tree	W	33	0.67	0.67	0.00	0.75	0.50	0.75	1.00
<i>Capparis ferruginea</i>	shrub/ tree	CE	32	0.67	0.67	0.00	0.63	0.83	0.75	0.71
<i>Guaiacum officinale</i>	tree	W	30	0.53	0.67	0.00	1.00	0.00	1.00	0.86
<i>Amyris elemifera</i>	shrub/ tree	W	28	0.67	0.33	0.00	0.75	0.50	0.00	1.00
<i>Eugenia foetida</i>	shrub/ tree	W	28	0.53	0.83	0.00	0.88	0.83	0.00	0.43
<i>Stigmaphyllon emarginatum</i>	liana	CE	28	0.93	0.50	0.50	0.50	0.33	0.25	0.43
<i>Colubrina elliptica</i>	tree	W	26	0.53	0.00	0.00	0.50	0.83	1.00	0.71
<i>Exostema caribaeum</i>	shrub/ tree	W	26	0.40	0.67	0.00	1.00	0.33	0.00	0.86
<i>Guaiacum sanctum</i>	shrub/ tree	W	26	0.87	0.33	0.00	0.50	0.67	0.00	0.43
<i>Senegalia angustifolia</i>	tree	CE	26	0.67	0.33	0.00	0.88	0.67	0.25	0.29
<i>Cynophalla flexuosa</i>	shrub/ tree	W	25	0.40	0.17	1.00	0.88	0.50	1.00	0.29
<i>Tillandsia recurvata</i>	herb	W	25	0.40	0.50	0.00	0.50	0.50	0.75	0.86
<i>Samyda dodecandra</i>	shrub	W	24	0.60	0.50	0.00	0.75	0.00	0.00	0.86
<i>Maytenus buxifolia</i>	tree	CE	23	0.87	0.00	0.00	0.50	0.00	0.25	0.71
<i>Pilosocereus polygonus</i>	tree	W	23	0.67	0.33	0.00	0.00	0.33	0.75	0.86
<i>Eugenia rhombea</i>	shrub/ tree	W	22	0.60	0.50	0.00	0.38	0.50	0.00	0.57
<i>Randia aculeata</i>	shrub	W	22	0.87	0.00	0.00	0.63	0.17	0.00	0.43
<i>Vachellia macracantha</i>	Tree	W	22	0.20	0.83	0.00	0.75	0.50	0.00	0.71

Status categories: CE, Caribbean endemic; W, widespread (islands and continents).

TABLE 3. Top five Indicator Species for each Bird Cluster, or all for which IV>0.3, whichever is greater, showing their Indicator Value and significance (p).

Species	Status	Indicator Value	Prob
Cluster A -- Low Elevation			
<i>Zenaida macroura</i>	W	0.5561	0.009
<i>Mimus polyglottos</i>	W	0.5025	0.007
<i>Columbina passerina</i>	W	0.4234	0.010
<i>Coereba flaveola</i>	W	0.3868	0.085
<i>Melanerpes striatus</i>	HES	0.3664	0.084
Cluster B -- Low-Mid-High Elevation			
<i>Turdus plumbeus</i>	CE	0.5400	0.004
<i>Microligea palustris</i>	HEG	0.3288	0.066
Cluster C -- High Elevation			
<i>Zenaida asiatica</i>	W	0.4862	0.020
<i>Phaenicophilus palmarum</i>	HEG	0.3752	0.015
Cluster D -- Mid-High Elevation			
<i>Loxigilla violacea</i>	CE	0.5011	0.012
<i>Nesocittes micromegas</i>	HEG	0.4464	0.012
<i>Tiaris bicolor</i>	W	0.4188	0.064
<i>Vireo altiloquus</i>	W	0.3896	0.081
<i>Contopus hispaniolensis</i>	HES	0.3333	0.039

Status categories: CE, Caribbean endemic; HEG, Hispaniolan endemic genus; HES, Hispaniolan endemic species; W, widespread (islands and continents).

TABLE 4. Summary of zero-inflated Poisson regression generalized additive models (GAMs) for individual bird species that occurred in 10 or more point counts with elevation as the predictor. Species are grouped by direction of trend and listed in order of strength of the fit.

Species	Frequ ncy	% Dev. Expl.	Prob	REML
Low elevation species				
<i>Columbina passerina</i>	29	79.4	<0.001	39.21
<i>Mimus polyglottos</i>	22	71.2	<0.001	26.02
<i>Zenaida macroura</i>	19	43.8	<0.001	36.92
<i>Melanerpes striatus</i>	10	31.2	0.090	21.65
<i>Anthracothorax dominicensis</i>	17	17.6	0.090	30.37
<i>Myiarchus stolidus</i>	26	15.6	0.040	39.97
Mid- and mid-high elevation species				
<i>Turdus plumbeus</i>	12	83.3	0.017	10.38
<i>Vireo altiloquus</i>	19	100.0	0.319	12.25
High (+/- low) elevation species				
<i>Todus subulatus</i>	28	20.7	0.272	34.20
<i>Coereba flaveola</i>	23	11.2	0.230	46.48
Weak relationship elevation				
<i>Mellisuga minima</i>	18	35.9	0.580	24.53
<i>Zenaida asiatica</i>	15	31.8	0.382	31.82
<i>Phaenicophilus palmarum</i>	27	12.8	0.982	34.11
<i>Coccyzus minor</i>	12	26.7	0.847	24.10
<i>Loxigilla violacea</i>	16	11.6	0.220	32.98

Frequency is the number of points in which the species was recorded (out of 33), percent deviance explained (% Dev. Expl.), significance of the smoothing term (Prob), and Restricted Maximum Likelihood Estimator (REML).

Fig. 1. Locations of 11 vegetation plots surveyed in 2016 by the authors (tdf16), 37 vegetation plots collected by Garcia et al. (2007) in 2004 (tdf04), and bird point counts collected by the authors in 2017 (bird) on Sierra Martín García (plot locations on Hispaniola shown in inset). Produced using ggmap (Kahle & Wickham 2013) with Google satellite map.



Fig. 2. Plant plots a) arranged by compositional similarity based on non-metric multidimensional scaling (NMDS) applied to a Jaccard distance matrix, labeled by Plant Cluster number (clustered using Ward's distance). Vectors show correlation of MAT, MAP and elevation with ordination axes; b) locations of plant plots by Plant Cluster number (Table 1), shown in geographical coordinates.

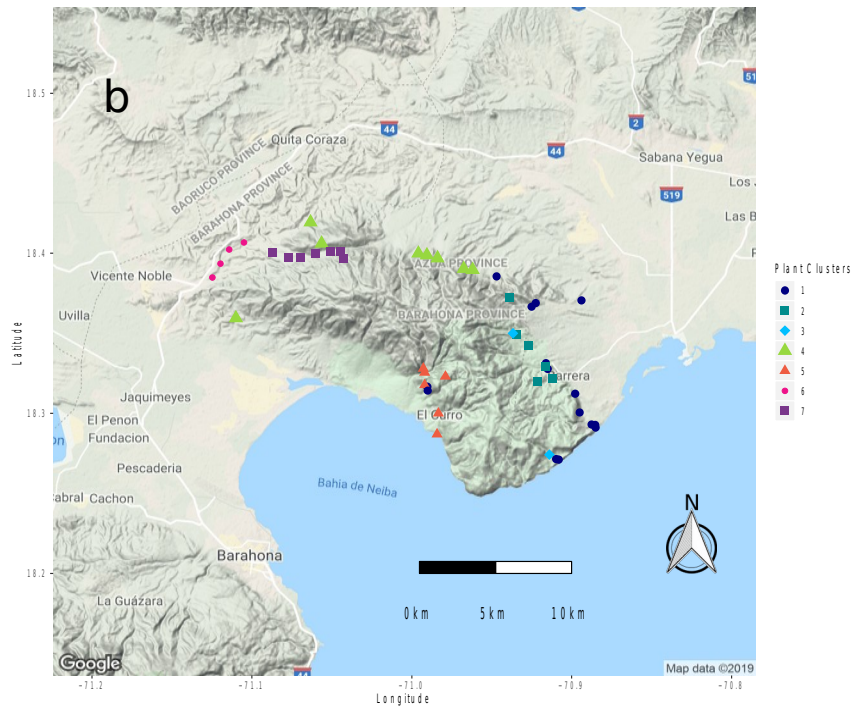
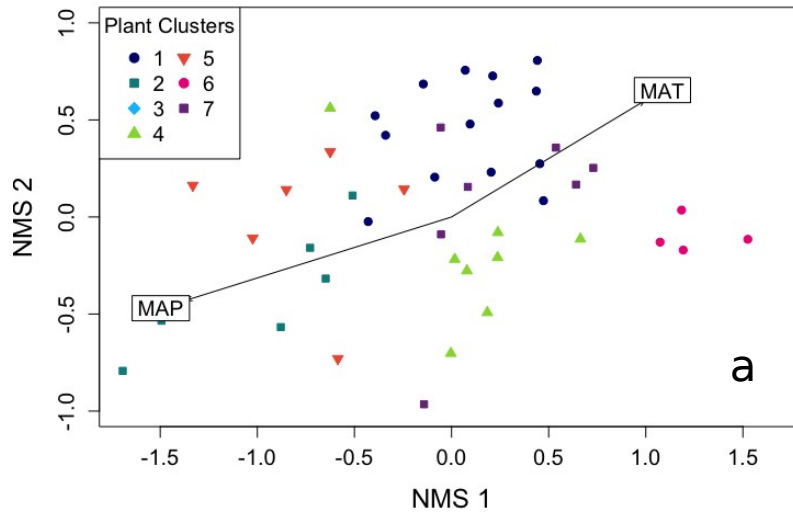


Fig. 3. Four groups of bird point counts (Bird Clusters A-D) defined by clustering, shown on the NMS ordination plot (axis 1 and 2) with vector indicating correlation with MAP and MAT, which are both strongly correlated with Axis 1, the main variation in bird species composition.

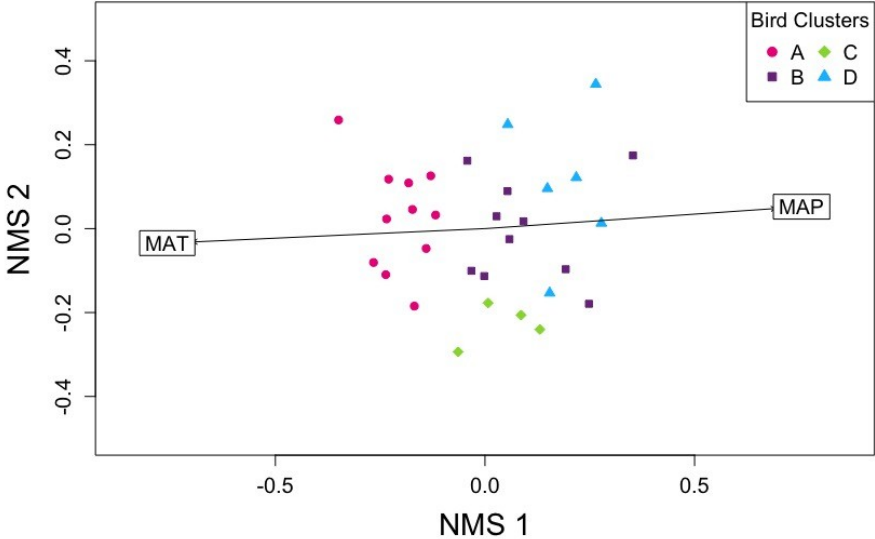


Fig. 4. Boxplots showing frequency distribution of elevation values for groups of bird point count locations defined by clustering (Bird Clusters). Thick line is median value, box encompasses 25-75%, whisker indicates 5% and 95%, circles are outliers.

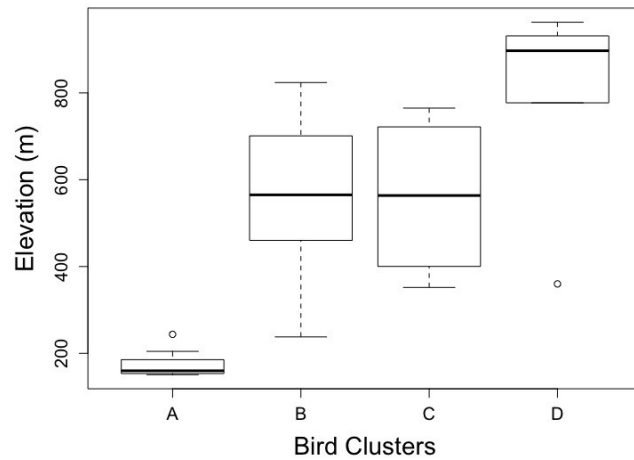
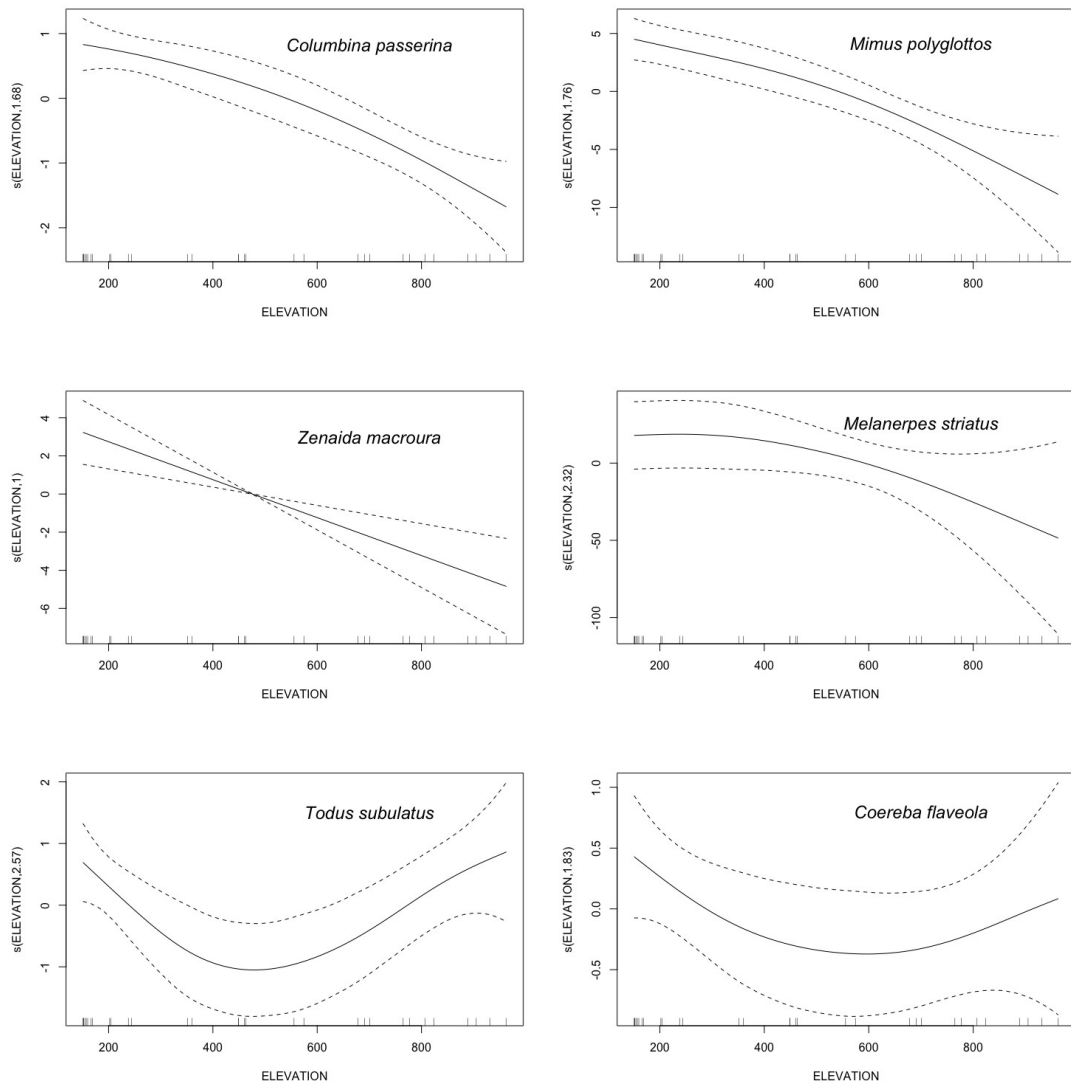


Figure 5. Trend (y-axes show the log of the Poisson parameter) in bird species abundance with elevation (shown on the x-axes) calculated from zero-inflated Poisson generalized additive models (GAMs; see Table 4) for four species showing association with low elevations (*Columbina passerina*, *Mimus polyglottos*, *Zenaida macroura*, *Melanerpes striatus*), and two showing bimodal pattern of low and high elevation (*Todus subulatus*, *Coereba flaveola*).



SUPPORTING INFORMATION

Additional Supporting Information may be found online in the supporting information tab for this article:

Fig. S1. Elevation (m) versus MAT (Mean Annual Temperature, °C) and Mean Annual Precipitation (MAP, mm) for 48 plant plot locations (Fig. 1 in main text) on Sierra Martín García.

Fig. S2. Ward's clustering cut at a similarity level of 1.3 defined seven Plant Clusters, groups of transects defined by shared plant species composition.

Fig. S3. Boxplots showing the frequency distribution of (A) Mean Annual Precipitation (MAP, mm) and (B) elevation for transects in each Plant Cluster (1-7).

Fig. S4. Ward's clustering cut at a similarity level of 0.8 defined four Bird Clusters, groups of point counts defined by shared bird species composition.

Fig. S5. Direct ordination of bird point counts using Canonical Correspondence Analysis (CCA), showing the distribution of species on ordination axes that are correlated with MAP and MAT (and therefore elevation).

Fig. S6. Trend (y-axes show the log of the Poisson parameter) in bird species abundance with elevation (shown on the x-axes) calculated from zero-inflated Poisson generalized additive models (GAMs) for species showing weak association with low elevation

Table S1. Bird point count locations (geographic coordinates in decimal degrees) and nearest plant plot. (**CSV file**)

Table S2. All plant taxa recorded in 48 (50 x 2 m) plant plots at Sierra Martín García, showing life form and status. (**CSV file**)

Table S3: All species of birds recorded in the 33 point counts at Sierra Martín García in May-June 2017, in order of frequency (% Points).

Fig. S1. Elevation (m) versus MAT (Mean Annual Temperature, °C) and Mean Annual Precipitation (MAP, mm) for 48 plant plot locations (Fig. 1 in main text) on Sierra Martín García.

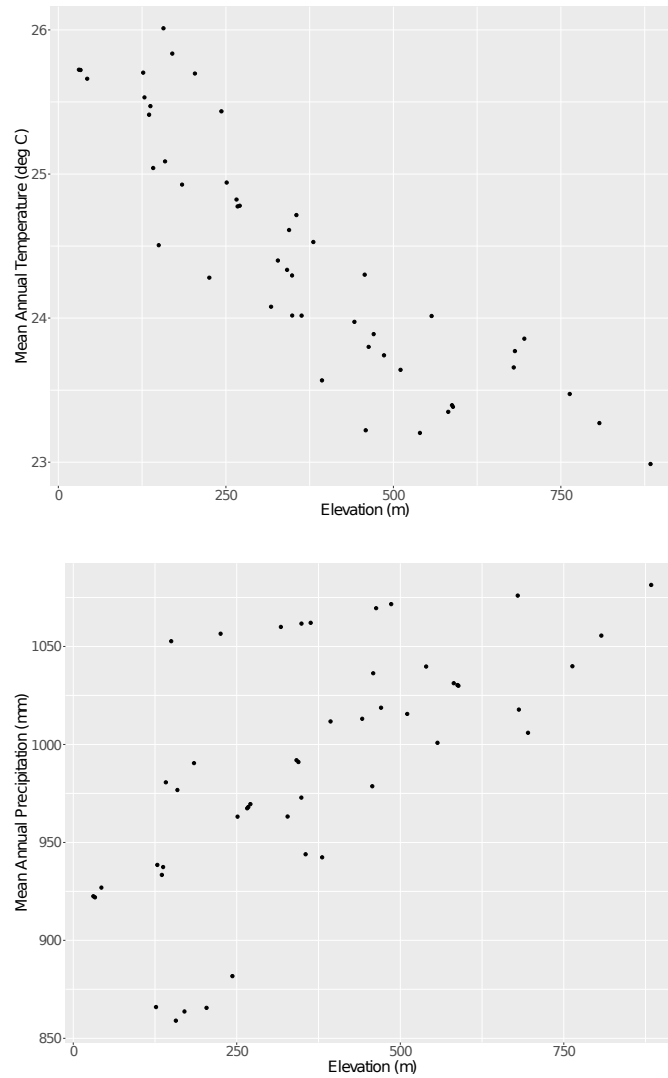


Fig. S2. Ward's clustering cut at a similarity level of 1.3 defined seven Plant Clusters, groups of transects defined by shared plant species composition.

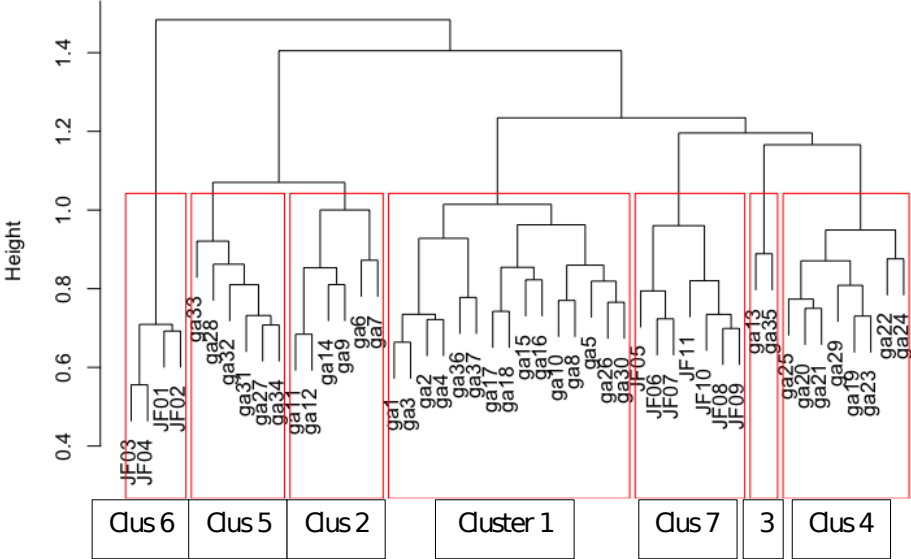


Fig. S3. Boxplots showing the frequency distribution of (A) Mean Annual Precipitation (MAP, mm) and (B) elevation for transects in each Plant Cluster (1-7). Thick line is median value, box encompasses 25-75%, whisker indicates 5% and 95%, circles are outliers.

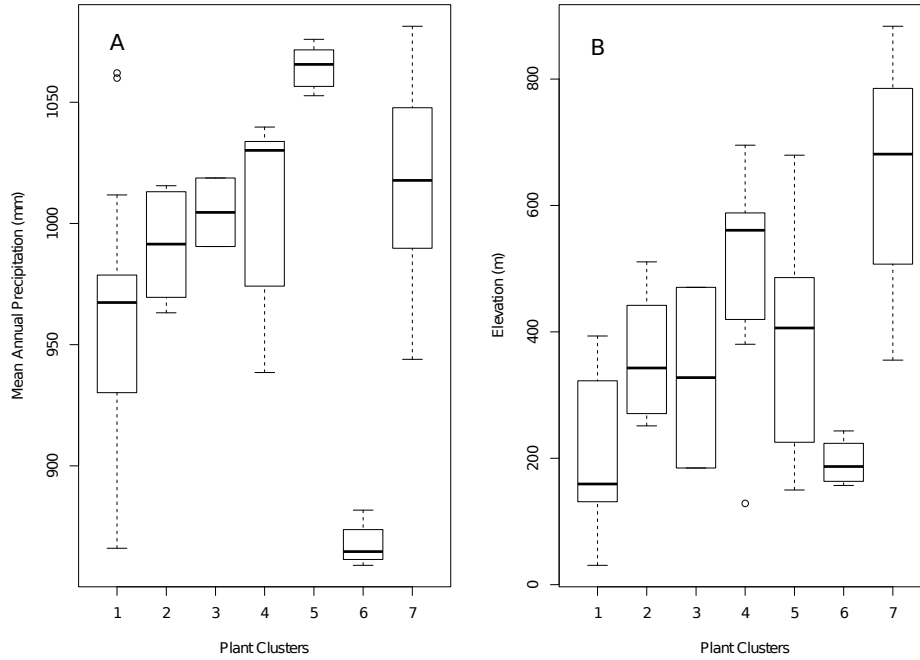


Fig. S4. Ward's clustering cut at a similarity level of 0.8 defined four Bird Clusters, groups of point counts defined by shared bird species composition

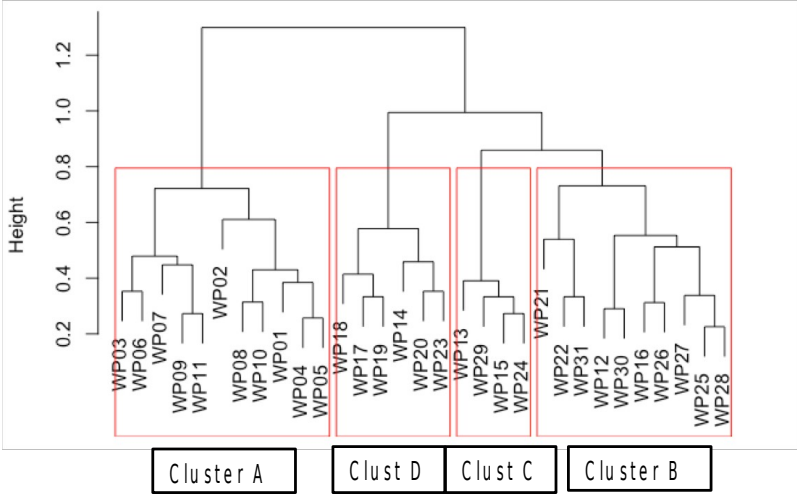


Fig. S5. Direct ordination of bird point counts using Canonical Correspondence Analysis (CCA), showing the distribution of species on ordination axes that are correlated with MAP and MAT (and therefore elevation). Six letter codes indicate species (see Table S2). Position on graph indicates which species occur in low-elevation (high values on CCA1, i.e., Cho_gun= *Chordeiles gundlachii*, Geo_mon= *Geotrygon montana*, Pat_squa= *Patagioenas squamosa*, Tac_pho= *Tachornis phoenicobia*), or high-elevation (low values on CCA1, i.e., Con_his= *Contopus hispaniolensis*, Nes_mic= *Nesocittes micromegas*, Pat_ino= *Patagioenas inornata*, Vir_nan= *Vireo nanus*), or throughout the elevation transect (species in the center of graph).

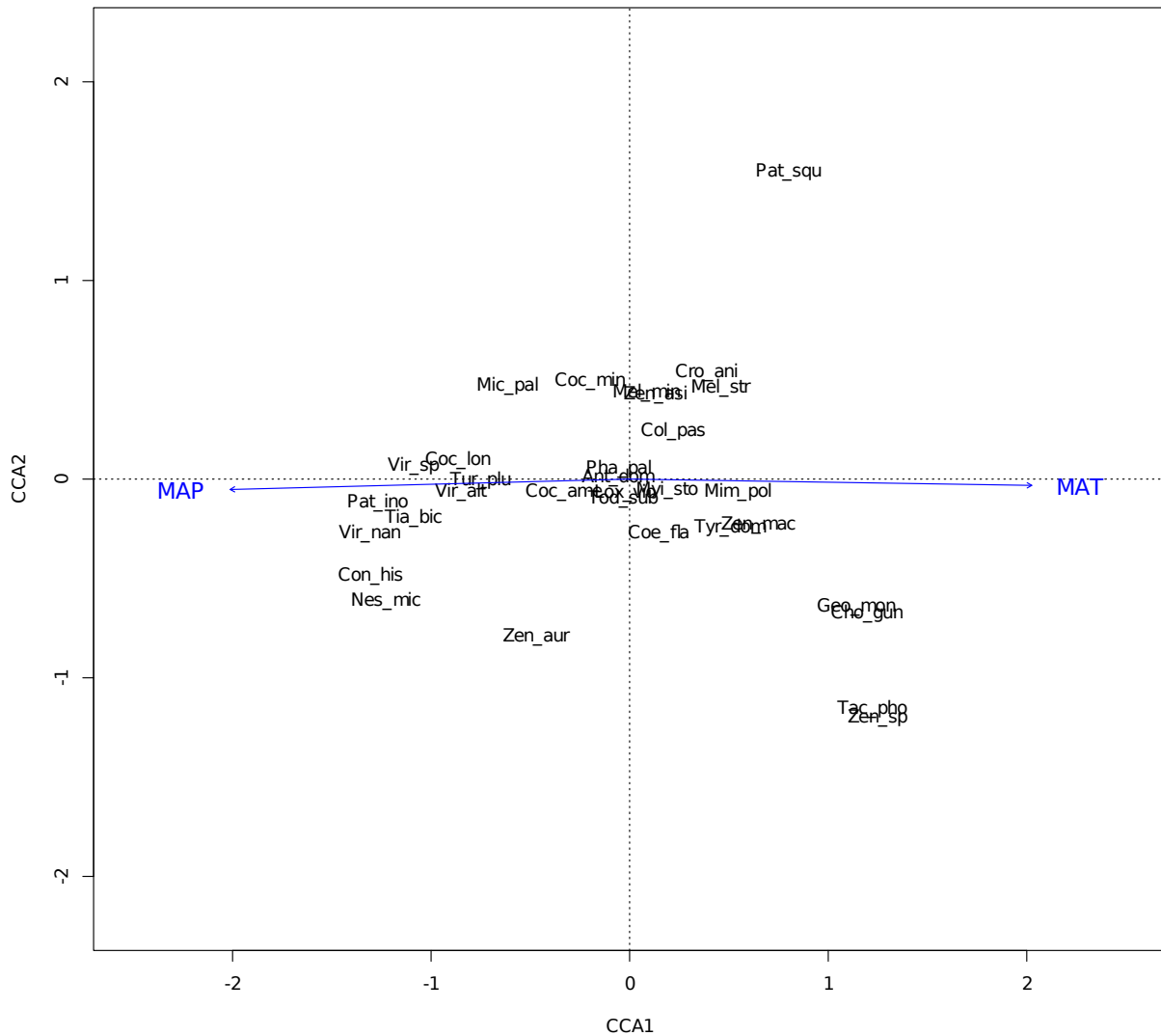


Fig. S6. Trend (y-axes show the log of the Poisson parameter) in bird species abundance with elevation (shown on the x-axes) calculated from zero-inflated Poisson generalized additive models (GAMs; see Table 4 in the main text) for species showing weak association with low elevation (*Anthracothonax dominicensis*, *Myiarchus stolidus*), and mid- to high elevation (*Vireo altiloquus*, *Turdus plumbeus*, *Coccyzus minor*).

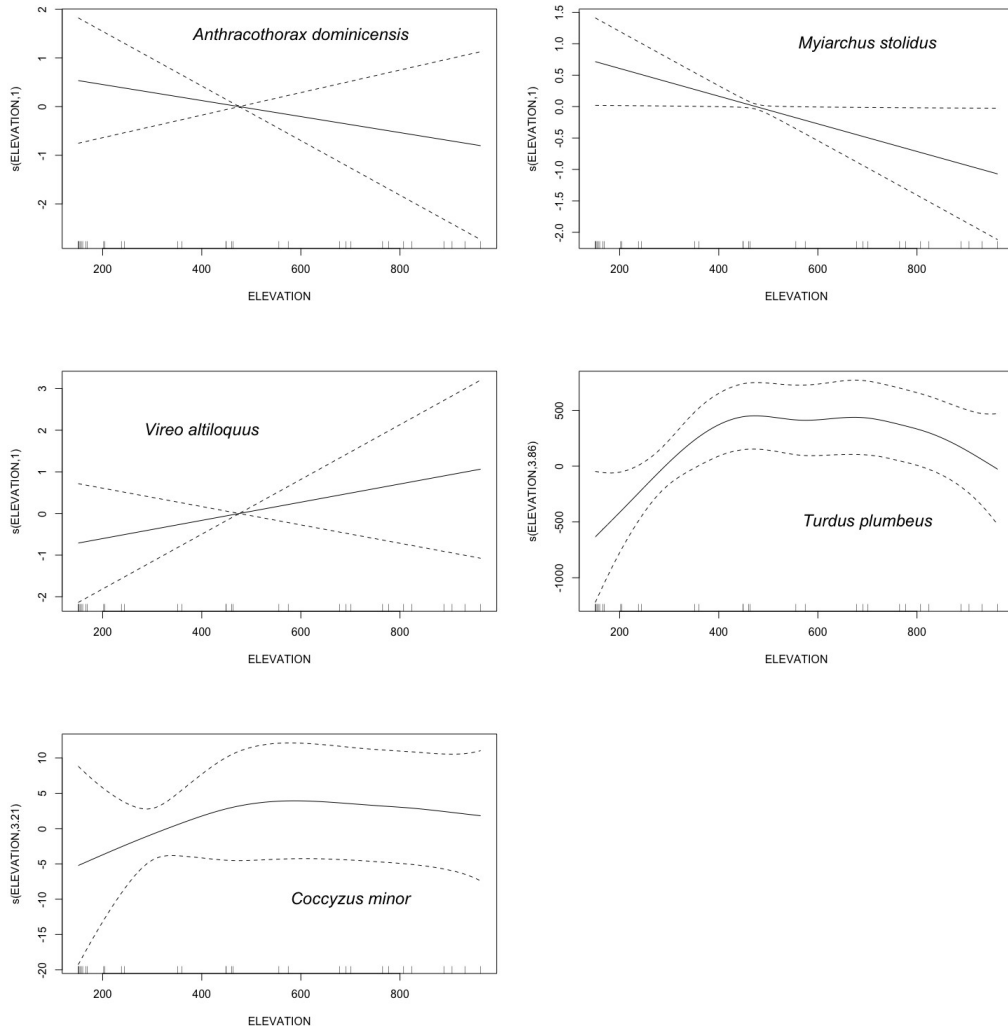


Table S1. Bird point count locations (geographic coordinates in decimal degrees) and nearest plant plot. (**Excel spreadsheet**)

Table S2. All plant taxa recorded in 48 (50 x 2 m) plant plots at Sierra Martín García, showing life form and status. (**Excel spreadsheet**)

Table S3: All species of birds recorded in the 33 point counts at Sierra Martín García in May-June 2017, in order of frequency (% Points). Status categories: HES, Hispaniolan endemic species; HEG, Hispaniolan endemic genus; CE, Caribbean endemic; W, widespread (islands and continents); NN, non-native. Points is number of point counts (out of 33) where species occurred (frequency). Total abundance is total number of birds counted. For Indicator Group see Table 3 in the main text. CCA score: low (negative) values correspond to low elevations sites with low precipitation and high temperatures, and high (positive) scores are the opposite. Elevation trend summarizes the results of GAMs in the main text (Table 4, Fig. 5), and see Fig. S5, and includes all species modelled, with low, mid-, high, and weak trend referring to elevation, and (rare) indicating to few occurrences to model.

Species	Status	Points	% Points	Total Abundance	Indicator Group (elevation)	CCA score	Elevation trend GAM
<i>Columbina passerina</i> Common Ground-Dove	W	29	88	54	1 (low)	0.219056	low
<i>Todus subulatus</i> Broad-billed Tody	HES	28	85	42		-0.036087	high +/- low
<i>Phaenicophilus palmarum</i> Black-crowned Palm-Tanager	HEG	27	82	38	3 (mid)	-0.056846	weak trend
<i>Myiarchus stolidus</i> Stolid Flycatcher	CE	26	79	41		0.186295	low
<i>Coereba flaveola</i> Bananaquit	W	23	70	43	1 (low)	0.145011	high +/- low
<i>Mimus polyglottos</i> Northern Mockingbird	W	22	67	32	1 (low)	0.543473	low
<i>Vireo altiloquus</i> Black-whiskered Vireo	W	19	58	25	4 (mid-high)	-0.853934	mid-high
<i>Zenaida macroura</i> Mourning Dove	W	19	58	36	1 (low)	0.647087	low
<i>Mellisuga minima</i> Vervain Hummingbird	CE	18	55	21		0.08255	weak trend
<i>Anthracothorax dominicus</i> Hispaniolan Mango	HES	17	52	21		-0.061543	low
<i>Loxigilla violacea</i> Greater Antillean Bullfinch	CE	16	48	22	4 (mid-high)	0.025213	low
<i>Zenaida asiatica</i> White-winged Dove	W	15	45	22	3 (mid)	0.128499	no trend
<i>Tiaris bicolor</i> Black-faced Grassquit	W	13	39	25	4 (mid-high)	-1.08881	(rare)

Species	Status	Points	% Points	Total Abundance	Indicator Group (elevation)	CCA score	Elevation trend GAM
						7	
<i>Coccyzus minor</i> Mangrove Cuckoo	W	12	36	14		- 0.20188 2	high
<i>Turdus plumbeus</i> Red-legged Thrush	CE	12	36	13	2 (all)	- 0.75312 1	middle
<i>Melanerpes striatus</i> Hispaniolan Woodpecker	HES	10	30	13		0.45495 2	low
<i>Microligea palustris</i> Green-tailed Warbler	HEG	7	21	10	2 (all)	- 0.61683	high
<i>Tyrannus dominicensis</i> Gray Kingbird	W	5	15	7		0.50236 8	(rare)
<i>Coccyzus longirostris</i> Hispaniolan Lizard-Cuckoo	HES	4	12	4		- 0.86734 9	(rare)
<i>Crotophaga ani</i> Smooth-billed Ani	W	4	12	4		0.38561 6	(rare)
<i>Nesocittes micromegas</i> Antillean Piculet	HEG	4	12	6	4 (mid-high)	- 1.22937 4	(rare)
<i>Vireo nanus</i> Flat-billed Vireo	HES	3	9	3		- 1.30962 5	(rare)
<i>Zenaida aurita</i> Zenaida Dove	CE	3	9	3		- 0.47245 8	(rare)
<i>Chordeiles gundlachii</i> Antillean Nighthawk	CE	2	6	4		1.19368 5	(rare)
<i>Coccyzus americanus</i> Yellow-billed Cuckoo	W	2	6	2		- 0.33330 3	(rare)
<i>Contopus hispaniolensis</i> Hispaniolan Pewee	HES	2	6	2	4 (mid-high)	- 1.30481 5	(rare)
<i>Tachornis phoenicobia</i> Antillean Palm-Swift	CE	2	6	2		1.22047 1	(rare)
<i>Geotrygon montana</i> Ruddy Quail-Dove	W	1	3	2		1.13847 4	(rare)
<i>Patagioenas inornata</i> Plain Pigeon	CE	1	3	1		- 1.27143 6	(rare)
<i>Patagioenas squamosa</i> Scaly-naped Pigeon	CE	1	3	1		0.79835 2	(rare)