

# UC Berkeley

## UC Berkeley Previously Published Works

### Title

Unified classification of mouse retinal ganglion cells using function, morphology, and gene expression

### Permalink

<https://escholarship.org/uc/item/8v86r2g6>

### Journal

Cell Reports, 40(2)

### ISSN

2639-1856

### Authors

Goetz, Jillian  
Jessen, Zachary F  
Jacobi, Anne  
[et al.](#)

### Publication Date

2022-07-01

### DOI

10.1016/j.celrep.2022.111040

### Copyright Information

This work is made available under the terms of a Creative Commons Attribution-NonCommercial-NoDerivatives License, available at <https://creativecommons.org/licenses/by-nc-nd/4.0/>

Peer reviewed



Published in final edited form as:

Cell Rep. 2022 July 12; 40(2): 111040. doi:10.1016/j.celrep.2022.111040.

## Unified classification of mouse retinal ganglion cells using function, morphology, and gene expression

Jillian Goetz<sup>1,13</sup>, Zachary F. Jessen<sup>1,2,3,13</sup>, Anne Jacobi<sup>4,5</sup>, Adam Mani<sup>1,10</sup>, Sam Cooler<sup>2,11</sup>, Devon Greer<sup>1,2</sup>, Sabah Kadri<sup>6,12</sup>, Jeremy Segal<sup>6</sup>, Karthik Shekhar<sup>7</sup>, Joshua R. Sanes<sup>5</sup>, Gregory W. Schwartz<sup>1,8,9,14,\*</sup>

<sup>1</sup>Department of Ophthalmology, Feinberg School of Medicine, Northwestern University, Chicago, IL, USA

<sup>2</sup>Northwestern University Interdepartmental Neuroscience Program, Northwestern University, Evanston, IL, USA

<sup>3</sup>Medical Scientist Training Program, Northwestern University, Chicago, IL, USA

<sup>4</sup>F.M. Kirby Neurobiology Center, Department of Neurology, Boston Children's Hospital, Harvard Medical School, Boston, MA 02115, USA

<sup>5</sup>Center for Brain Science and Department of Molecular and Cellular Biology, Harvard University, Cambridge, MA, USA

<sup>6</sup>Department of Pathology, Pritzker School of Medicine, University of Chicago, Chicago, IL, USA

<sup>7</sup>Department of Chemical and Biomolecular Engineering and Helen Wills Neuroscience Institute, University of California Berkeley, Berkeley, CA, USA

<sup>8</sup>Department of Physiology, Feinberg School of Medicine, Northwestern University, Chicago, IL, USA

<sup>9</sup>Department of Neurobiology, Weinberg College of Arts and Sciences, Northwestern University, Evanston, IL, USA

<sup>10</sup>Present address: Department of Neuroscience, Brown University, Providence, RI, USA

<sup>11</sup>Present address: Department of Neurosurgery, Stanford University, Stanford, CA, USA

This is an open access article under the CC BY-NC-ND license (<http://creativecommons.org/licenses/by-nc-nd/4.0/>).

\*Correspondence: [greg.schwartz@northwestern.edu](mailto:greg.schwartz@northwestern.edu).

### AUTHOR CONTRIBUTIONS

J.G. and G.W.S. designed the study. J.G. and G.W.S. collected functionally identified cells for RNA sequencing. A.J. performed RNA sequencing experiments in the lab of J.R.S. Z.F.J., G.W.S., and A.M. wrote analysis code for quantifying and classifying RGC responses. Z.F.J., S.C., and G.W.S. built [rgctypes.org](http://rgctypes.org). S.K. and J.S. helped design the molecular studies and analyzed transcriptomics data. K.S. matched transcriptomic data to the previously identified clusters. J.R.S., K.S., and G.W.S. led the molecular parts of the project. D.G. analyzed data for the dense RGC recording (Figure S6) and assembled the database of traced RGC images at [rgctypes.org](http://rgctypes.org). Z.F.J. built the machine learning RGC classifier. Z.F.J. and G.W.S. performed morphological analyses. G.W.S. performed analyses to align the classification modalities. J.G., Z.F.J., A.M., S.C., D.G., G.W.S., and additional members of the Schwartz Lab recorded RGCs for the dataset. J.R.S. and G.W.S. acquired funding and managed the project. J.G. and G.W.S. wrote the first draft of the paper. Z.F.J., J.R.S., K.S., and G.W.S. revised the paper.

### SUPPLEMENTAL INFORMATION

Supplemental information can be found online at <https://doi.org/10.1016/j.celrep.2022.111040>.

### DECLARATION OF INTERESTS

The authors declare no competing interests.

<sup>12</sup>Present address: Department of Pathology and Department of Preventive Medicine, Feinberg School of Medicine, Northwestern University, Chicago, IL, USA

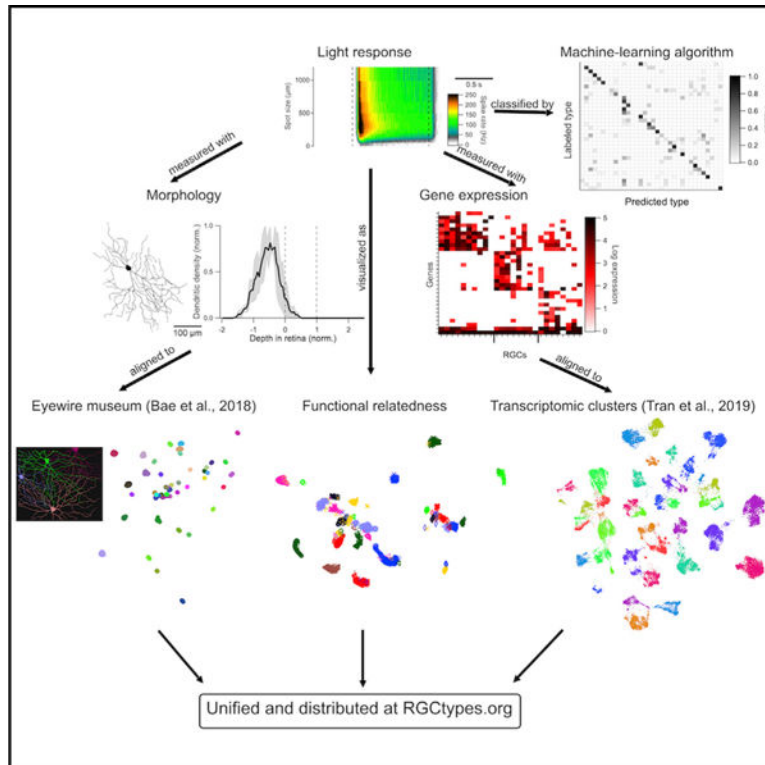
<sup>13</sup>These authors contributed equally

<sup>14</sup>Lead contact

### SUMMARY

Classification and characterization of neuronal types are critical for understanding their function and dysfunction. Neuronal classification schemes typically rely on measurements of electrophysiological, morphological, and molecular features, but aligning such datasets has been challenging. Here, we present a unified classification of mouse retinal ganglion cells (RGCs), the sole retinal output neurons. We use visually evoked responses to classify 1,859 mouse RGCs into 42 types. We also obtain morphological or transcriptomic data from subsets and use these measurements to align the functional classification to publicly available morphological and transcriptomic datasets. We create an online database that allows users to browse or download the data and to classify RGCs from their light responses using a machine learning algorithm. This work provides a resource for studies of RGCs, their upstream circuits in the retina, and their projections in the brain, and establishes a framework for future efforts in neuronal classification and open data distribution.

### Graphical abstract



### In brief

Function, morphology, and gene expression are the most common criteria used to classify neurons. Goetz et al. use all three criteria to create a unified classification of mouse retinal ganglion cells and build an interactive online resource for exploring the data.

---

## INTRODUCTION

A major goal in biology is the establishment of a comprehensive atlas of cell types. Many large-scale efforts are underway to classify cells in different tissues (BRAIN Initiative Cell Census Network, 2021; Hodge et al., 2019; Regev et al., 2017; Wilbrey-Clark et al., 2020; Yuste et al., 2020). In the central nervous system (CNS), classification efforts have relied mainly on three types of information: functional, morphological, and molecular. Functional classification involves the physiological properties of neurons, typically measured by electrophysiological recordings. Morphological classification uses the dendritic and axonal structures of neurons, measured by light or electron microscopic (EM) methods. Molecular classification was initially based on immunohistochemical or *in situ* hybridization, but has more recently relied on gene expression patterns (transcriptomes) assessed by high-throughput single-cell RNA sequencing and spatial transcriptomics (Close et al., 2021; Yuste et al., 2020). It has become increasingly clear that different classification methods offer complementary information and that a comprehensive classification of cell types needs to unify all three modalities (BRAIN Initiative Cell Census Network, 2021; Scala et al., 2020; Zeng and Sanes, 2017).

The mammalian retina is especially well suited to provide a template for integrating functional, morphological, and molecular classification for three reasons. First, many retinal cell types exhibit regular spacing, called a mosaic, which ensures smooth and complete sampling of visual space (Bleckert et al., 2014; Kay et al., 2012; Reese and Keeley, 2015; Rockhill et al., 2000; Rousso et al., 2016; Wässle et al., 1981). This property means that experimentalists can sample from a sub-region of the retina and be assured that they will find cells of each type. Moreover, mosaics establish an independent metric to assess whether a set of cells comprises an authentic type. Second, because the retina responds to light *ex vivo*, functional measurements of retinal neurons include both intrinsic biophysical properties and response properties to visual stimuli. Light responses depend on the entire upstream synaptic network, creating a rich dataset. Finally, our knowledge of the morphology of retinal neurons, particularly in the mouse, is unparalleled among tissues of the mammalian CNS (Bae et al., 2018; Hoon et al., 2014; Sanes and Masland, 2015).

Here, we present a unified functional, morphological, and genetic classification of mouse retinal ganglion cells (RGCs), the output cells of the retina. We collected detailed functional data from 1,859 RGCs and also obtained morphological or transcriptomic data from subsets of these cells. We then used these doubly characterized cells to align the functional classification with publicly available large-scale datasets of RGC morphology (381 RGCs reconstructed from EM sections; Bae et al., 2018) and gene expression (35,699 single-RGC transcriptomes; Tran et al., 2019), thereby generating a unified atlas. Comparison of the three datasets reveals that close relationships between cell types identified by one criterion sometimes predicts close relationships by other criteria.

Finally, we provide two tools that make the data useful to the community and suggest formats for crossmodal analyses of other populations. First, we devised a machine learning classifier that allows researchers to infer an RGC's functional type from a small and standardized set of spike measurements. Second, we curated the data in the form of a continuously updated, open-access library ([rgctypes.org](http://rgctypes.org)) where researchers can browse single-cell- or cell-type-level data and download functional, morphological, and transcriptomic datasets.

## RESULTS

RGCs have traditionally been classified by physiological, morphological, and molecular criteria. Recent studies have used high-throughput methods to categorize mouse RGCs at large scale using all three criteria: optical imaging of visually evoked responses (Baden et al., 2016); reconstruction from serial EM sections (Bae et al., 2018); and transcriptomic analysis of single RGCs (Tran et al., 2019). Our goal was to unify these dimensions into a single schema that was as complete as possible in representing all known RGC types in the mouse. We made our measurements in one cell at a time, allowing us to perform online functional classification followed by recovery of the same cells for morphological or transcriptomic measurements.

### Functional classification of RGCs

We began with physiological characterization, using a rapid and standardized light stimulus protocol for functional measurements. Experiments were performed in dark-adapted *ex vivo* preparations of the mouse retina where capacitive spikes from RGCs were recorded with cell-attached electrodes. Standard light stimuli presented to every RGC were rod-saturating (~200 isomerizations/rod/s) spots ( $\lambda = 450$  nm) from darkness with diameters ranging from 30 to 1,200  $\mu\text{m}$ , centered on the receptive field (RF) of each individual cell. We presented additional stimuli to subsets of RGCs to test for specific forms of feature selectivity. Moving bars were used to test for direction selectivity (DS), flashed bars, and drifting gratings for orientation selectivity (OS), and contrast series for contrast suppression (Figure S1). Background luminance values of 1,000  $\text{R}^*/\text{rod/s}$  were used for drifting gratings, and contrast series experiments were presented for less than 6 min per cell; response changes for subsequent measurements from darkness were negligible (data not shown).

Our standard stimulus paradigm differed from the full-field “checkerboard” white noise and “chirp” stimuli used in previous studies (Baden et al., 2016; Farrow and Masland, 2011; Jouty et al., 2018). Three considerations drove our stimulus choice. First, maintenance of a consistent light-adaptation state was essential because many aspects of RGC light responses change with luminance and with light adaptation (Tikidji-Hamburyan et al., 2015; Wienbar and Schwartz, 2018). High background light is unavoidable in functional two-photon imaging experiments due to excitation from the laser, limiting the period of stable light responses, especially in preparations lacking the retinal pigment epithelium (Euler et al., 2019). The use of patch electrodes allowed us to make measurements in darkness. Second, precise localization of stimuli with respect to the RF center cannot be achieved with full-field stimuli but turned out to be critical as shown below. Indeed, many RGCs that

respond well to small stimuli in their RF center fail to respond to any full-field stimulus (Jacoby and Schwartz, 2017; Zhang et al., 2012). Finally, to facilitate standardization in the field, we wanted our stimulus to be simple and rapid and to correspond to those commonly used by others. For example, many previous studies have used RF-centered spots of different sizes, enabling retrospective comparisons (Jacoby and Schwartz, 2017; Johnson et al., 2018; Krieger et al., 2017; Marco et al., 2013; Rousso et al., 2016).

We assigned RGCs to 42 functional types by hand based on our iteratively updated understanding of their response patterns. Thirty-four of these types were assigned based only on the responses to flashed spots, while the additional eight types were subdivided by direction or orientation preference. Thus, while our classification is not free from human bias, two pieces of evidence, detailed below, strengthen our confidence that it represents an accurate typology: (1) cells that we placed in the same functional group typically had strong morphological and molecular similarities and (2) a cross-validated algorithm successfully classified functional RGC types, including those with “external” classification data on which the algorithm was never trained. We organized the RGC types into eight functional groups: ON sustained, OFF sustained, ON transient, OFF transient, ON OS, DS, ON-OFF small RF, and suppressed-by-contrast (SbC)/other. These groups were chosen as a starting point based on previous work; a quantitative measure of functional relatedness is presented below.

In most recordings (1,246/1,859 cells), retinal orientation and cell locations were noted to determine whether classification varied based on retinal position. Response patterns within some RGC types have been shown to vary as a function of retinal position in photopic conditions (Joesch and Meister, 2016; Warwick et al., 2018), likely because of a pronounced cone opsin gradient along the dorsoventral axis (Nadal-Nicolás et al., 2020). In our dark-adapted preparation, however, where much of the light response was initiated in rods (Grimes et al., 2014), response variation across retinal position was minimal. We found no significant relationship between retinal position and any of the six response metrics we tested (see STAR Methods). The responses of OFF transient alpha RGCs, which had previously been shown to depend on dorsoventral position in high luminance (Warwick et al., 2018) showed no position dependence under our conditions (data not shown).

Most functional RGC types were relatively uniformly distributed across retinal locations (Figure S2). A shuffle test revealed two RGC types with significant positional biases (Table S1). F-mini-ON RGCs were found in greater proportion in the ventral retina; however, we specifically targeted them in that region based on a previous report of their prevalence there in a transgenic line (Rousso et al., 2016). PixON RGCs were found in greater proportion in the dorsal retina which, to the best of our knowledge, does not represent sampling bias and has not been reported previously. Several other RGC position distributions showed trending biases that failed to meet the Bonferroni correction for multiple comparisons. These include the known prevalence of ON alpha RGCs in the temporal retina (Bleckert et al., 2014), and the previously unreported prevalence of UHD RGCs in the nasal retina.

Data from 37 RGC types are presented in three ways in Figure 1 (only 37 of the 42 types are illustrated because DS RGCs with different directional preferences did not differ from each other in their responses to light spots). We first measured the response polarity and kinetics

of light responses with a 200  $\mu\text{m}$  light spot centered on the RF (marked “a” in the ON alpha RGC panel). This allowed us to assign cells according to response polarity (ON, OFF, ON-OFF, or SbC) and as having sustained or transient responses to luminance changes. Second, to assess how each RGC type’s response varied with stimulus size, we measured the total ON and OFF spike responses for spots of 12 sizes from well below the RF center diameter of the smallest RGC (30  $\mu\text{m}$ ) to a size that reached the far RF surround (1,200  $\mu\text{m}$ ) (marked “b” in the ON alpha RGC panel). This information was critical in separating many types. For example, despite similar responses to the 200  $\mu\text{m}$  spots, ON-OFF DS, HD1, HD2, and UHD all had different response profiles of their ON and OFF responses across spot size. For some RGC types, even the overall polarity of the light response depended on spot size. For example, HD2 RGCs are ON-OFF for small spots and ON for large spots (Jacoby and Schwartz, 2017), and the ON small OFF large RGC switches polarity entirely with spot size as its name suggests. Finally, we combined information about response amplitude and kinetics as a function of spot size into a single plot using a heatmap of firing rate over time for each spot size (marked “c” in the ON alpha RGC panel). Functional heatmaps of the variability in these responses within each functional group are presented in Figure S3 and distributions of six common response metrics for each RGC type are shown in Figure S4.

### Functional relatedness of RGC types

To visualize the relationships between functional RGC types, we used Uniform Manifold Approximation and Projection (UMAP) (Becht et al., 2018; McInnes et al., 2018) (Figure 2). The UMAP algorithm assigned each cell to a point in 2D space based only on its response to spots of varying size (see data in Figure 1) with closely related cells projecting to nearby locations in this space. We did not include the moving bar or drifting gratings responses as input to the UMAP algorithm since they were not measured for every RGC. Therefore, DS RGCs with different direction preferences and OS RGCs with different orientation preferences were grouped together in this representation. Most RGC types formed clear clusters in UMAP space with a few exceptions, typically for types that were sampled sparsely in our dataset (Figure 2A).

To assess the clustering of each of our defined functional types in this UMAP space, we subsequently clustered points in this 2D space with DBSCAN (Ester et al., 1996). F scores, which measure the overlap between our 34 type labels and the 33 clusters identified by DBSCAN are shown in Figure 2B. These scores represent the degree of functional similarity (for this stimulus paradigm) within our assigned types relative to the differences between types. The types with lowest F scores (10 types  $<0.75$ ) likely contain the majority of our labeling errors. There are also RGC types in this group (e.g., M1 and ON bursty RGCs) for which additional lines of evidence suggest that our labels are correct (see morphological and molecular data in Figures 4 and 5), but for which the average spike rates for flashed spots alone are not sufficient for highly reliable functional classification. The average F score, weighted by the number of cells of each type in the dataset, was 0.89.

### Automated functional classification

We implemented a machine learning classifier to assign RGCs to types based on a feature set comprising spike responses to spots of varying size. Since the responses to moving bars and



drifting gratings were not included in the feature set, we collapsed DS and OS cells across direction and orientation, respectively. Our dataset of 1,859 RGCs across 34 types was split into a training set (n = 883), a calibration set (n = 500), and a test set for model evaluation (n = 476). Details of data split and classifier architecture are provided in STAR Methods.

Following training, the performance of the classifier was evaluated on the test set (Figure 3). For each cell, the classifier outputs the probability of membership in each RGC type. Thus, the algorithm provides both a “best guess” and a confidence rating for each prediction. An advantage of probabilistic scoring is that the classifier predictions can easily be updated to include complementary sources of information (e.g., previous probabilities based on stratification depth in the inner plexiform layer [IPL] or labeling in a transgenic line) via Bayes’ rule (MacKay and Mac, 2003). Without thresholding the probability scores, classification accuracy was 59% overall (with chance being  $1/34 = 2.9\%$ ; Figures 3B and 3D). The correct RGC type was among the top three choices of the classifier 75% of the time (Figure 3A, inset), suggesting that additional information (functional, structural, or molecular), could be used to refine its predictions.

To gain some measure of the degree to which RGC types classified by flashed spots correspond to those identified by other criteria, we used five types of “external” validation data that were not available to the classifier: (1) an image of the cell’s morphology, (2) fluorescent labeling in one of several transgenic lines in which small subsets of RGCs are labeled (see STAR Methods), (3) synaptic currents in voltage-clamp whose profile match those in our published work on particular RGC types (Cooler and Schwartz, 2020; Jacoby and Schwartz, 2017; Jacoby et al., 2015; Mani and Schwartz, 2017; Nath and Schwartz, 2016, 2017), (4) large soma size noted at the time of recording (for the three alpha RGC types), and (5) DS or OS as measured by moving bars and/or drifting gratings (see Figure S1). A total of 634 of the RGCs in our dataset (34%) were validated by one or more of these external data types (Table S2). Classifier performance was slightly better for the validated cells in our test set (65% correct, n = 221 cells) than for the unvalidated cells (59% correct, n = 255 cells).

Classification accuracy varied widely across RGC types, with 9 types having 0% sensitivity and the other 24 having a median accuracy of 71% (Figure 3B). Overall accuracy scaled linearly with the unclassified fraction as we increased the classification margin, i.e., minimum probability score at which cells are assigned a type label (Figure 3A). Cells with maximal class probabilities below the classification margin are considered “unclassified.” Increasing the classification margin to 0.205 achieved an accuracy of 80% across the whole dataset, with 49% of cells unclassified (Figure 3E). The most significant limitation of our classifier was the size of the training set (Figure 3C). Thus, we expect classifier performance to improve steadily as we continue to collect more data, particularly from rare RGC types. Updated results, newly trained versions, and tutorials for formatting data and running it through the classifier will continue to be made available at [rgctypes.org](http://rgctypes.org).

### Alignment of functional and morphological classification

After we recorded visually evoked responses from RGCs, we filled some of them with either Alexa Fluor 488 for live imaging or with Neurobiotin for post-hoc imaging. A total



of 136 of these images could be effectively computationally flattened and registered to the choline acetyltransferase (ChAT) bands; ChAT is an established marker for the dendrites of starburst amacrine cells, which stratify in stereotypical, narrow strata (Sümbül et al., 2014). This alignment allowed quantitative measurements of *en face* morphology and stratification patterns within the IPL (Figure 4).

Stratification profiles for each functionally defined RGC type are shown in Figure 4A along with those of our suggested match in the Eyewire museum (Bae et al., 2018). Stratification similarity between each of our types and each type in the Eyewire museum is shown as cosine overlap in Figure 4C. While stratification profile was an important factor in matching our types to those in the Eyewire museum, it was not the only factor. Along with stratification location and thickness, Figure 4B also depicts the dendritic field diameter and density of each stratum as well as the soma size for each RGC type, as measured *en face*. Example traced images of each type are shown in Figure 4D, and a supplemental dataset contains all of the traced cells in *en face* and side views along with those of our suggested Eyewire match (see the key resources table in the STAR Methods).

We combined all of our morphological measurements and used UMAP to project the data for all 136 cells into 2D. While this dataset was not large enough for clustering into ~40 types to be feasible, we measured distances in this space to capture the morphological similarity among cells that we independently grouped together by their light responses (Figure S5). For 30 of the 32 types represented in this dataset (those with 2 or more members), the mean pairwise morphological distance for cells of the same functional type was less than the mean pairwise morphological distance in the entire dataset. The compactness of this morphological representation for RGCs of the same functional type varied by RGC type; 10 types were more than 10-fold more compact in this space than the mean.

### Alignment of functional and transcriptomic classification

Recent large-scale investigations of single-cell transcriptomes in the retina have identified ~45 molecularly distinct types of postnatal mouse RGCs, comparable with the number of RGC types identified through physiological and morphological analyses (Rheume et al., 2018; Tran et al., 2019). While some clusters could be matched 1:1 with previously known types based on well-established molecular markers (Sanes and Masland, 2015), approximately 40% of clusters remained unmatched. Moreover, these methods used dissociated tissue, precluding direct harmonization of gene expression with function.

To relate functional to molecular criteria, we used a variant of the Patch-seq technique (Cadwell et al., 2016) in which RGCs were first classified based on their cell-attached light responses and then the cytoplasm was collected for RNA sequencing by aspirating the soma with a clean pipette (see STAR Methods). We obtained 103 high-quality single-RGC transcriptomes (>2,000 genes/cell). We used gradient boosted decision trees (Chen and Guestrin, 2016) to match each of our transcriptomes to a cluster in the published adult RGC dataset (Tran et al., 2019) (see STAR Methods). Many of our functionally identified cells matched the transcriptomic clusters with high concordance (Figure 5A), providing putative matches to previously unknown clusters. For example, the three types of ON DS sus cells

all aligned to C10 (a previously uncharacterized cluster), OFF tr SmRF aligned with C21, corresponding to T-RGC S2 (Liu et al., 2018) and ON delayed (Mani and Schwartz, 2017), previously observed in *CCK-ires-Cre* mice (Jacoby and Schwartz, 2018; Tien et al., 2015) aligned with a cluster (C14), which was distinguished by the expression of the neuropeptide *Cck*.

### T5-RGCs share a functional and morphological profile

Alignment of our physiologically characterized types to transcriptomically defined RGC groups (Tran et al., 2019) enables a deeper analysis of the relationships between gene expression of RGCs and their function and morphology. One example is provided by the gene *Tusc5* (also known as *Trarg1*), which we identified as a key marker of a group of nine mostly unidentified transcriptomic clusters termed T5 RGCs (Tran et al., 2019). Most of these RGCs are labeled by the transgene TYW3, which exhibits insertion-site-dependent expression (Laboulaye et al., 2018).

Transcriptomic clusters corresponding to the T5 RGCs are labeled by green arrowheads in Figure 5A. Six of these clusters are matched to RGC types in our dataset, so we examined whether these types share functional or morphological characteristics. All six T5 RGC types lie at the intersection of two functional characteristics, transience and strong surround suppression, and one morphological characteristic, stratification between the ChAT bands (Figure 5B). Other subclasses of RGCs can be queried in this way, with increasing power as additional data are added to [rgctypes.org](http://rgctypes.org).

### The question of completeness

One way to estimate the completeness of our classification is to record nearly all the RGCs in a small region of the retina and count how many can be assigned to one of our types. We performed such an experiment and then stained the tissue with the pan-RGC marker gamma-synuclein (Surgucheva et al., 2008) to confirm RGC identity post-hoc (Figure S6). We recorded 55 spiking cells and 25 cells for which we could not elicit spikes with our test stimuli. Of the 55 spiking cells, 48 were successfully identified in the fixed tissue. In the live tissue we had labeled 42 of these cells as RGCs matching one of our types and 6 as spiking amacrine cells. All 48 of these identifications were verified by the gamma-synuclein staining (42/42 gamma-synuclein-positive RGCs and 6/6 gamma-synuclein-negative spiking amacrine cells).

Of the 25 cells for which we could not elicit spikes, 22 were identified in the fixed tissue: 10 were gamma-synuclein negative, presumably non-spiking amacrine cells, and 12 were gamma-synuclein positive, presumably RGCs that we failed to identify. Thus, we identified 78% (42/54) of the putative RGCs in this sample. While somewhat less than our estimate of 89% coverage of the types in the Eyewire museum, it is a conservative estimate because some of the non-responding RGCs were likely damaged during removal of the inner limiting membrane or by the recording procedure and did not spike (e.g., because the axon initial segment was destroyed) but survived enough structurally for gamma-synuclein staining.

## Relatedness of functional, morphological, and transcriptomic space

The main goal of our study was to directly relate physiological, structural, and molecular definitions of cell type. Our suggested alignments between these three modalities are shown in Figure 6A. Functional types are colored by their F scores from Figure 3, and the data used to infer the alignment are shown in Figures 4 and 5. With this alignment data in hand, we were able to address an additional question: to what extent do relationships among types established in one modality (e.g., function) predict those in another modality (e.g., morphology)? Importantly, this is not a test of the quality of our alignment between modalities. Functionally similar RGC types might differ substantially in morphology and/or gene expression, and the degree to which local neighborhoods are similar across modalities might vary for each RGC type.

To investigate the questions of crossmodality neighborhood similarity, we constructed a UMAP embedding of the stratification profiles of each cell in the Eyewire museum (Bae et al., 2018) (Figure 6B) and another UMAP embedding of gene expression from the mouse RGC transcriptomic atlas (Figure 6C) (replotted from Tran et al., 2019). To measure neighborhood similarity across the three UMAP spaces (the functional space from Figure 2A and the stratification and gene expression spaces in Figures 6B and 6C), we tested whether the nearest neighbors in a reference modality were also grouped nearby in another modality.

For each RGC type, we computed the fractional overlap among the identities of its nearest neighbors in the reference embedding to that in the other two embeddings. We repeated this analysis for neighborhood sizes from 2 to 12 nearest neighbors and grouped the results into the “local” and “global” neighborhoods. To establish statistical significance on this fractional overlap measure, we used the bootstrap approach. We randomly shuffled type identities in each of the maps and recomputed the fractional overlap. Repeating this process 1,000 times yielded an empirical null distribution. Fractional overlap values obtained from the real data are reported as *Z* scores relative to this null distribution, with positive values indicating greater overlap in the real data than in the null distribution (Figures 6D–6F).

Overall, similarity between modalities was modest; crossmodality overlap for many RGC types was within 1 SD of the null distribution (shaded regions in Figures 6D–6F). Several RGC types did show strong local neighborhood similarity between functional and morphological (IPL stratification) embeddings (Figure 6D), and one type (OFF OS; 2aw; C5 and C9) showed a strong correspondence between its local neighborhoods in stratification and gene expression space. Global neighborhood alignments had similar overall trends but a somewhat different set of RGCs tended to be more crossmodally aligned globally than locally.

## Integrated web-based RGC compendium

Finally, we created a resource so that labs around the world can come to a consensus on the classification of mouse RGCs. To that end, we have developed a website, [rgctypes.org](https://rgctypes.org). (Figure 7), with a direct pipeline to our database of functional and morphological measurements. Following a curation step and type assignment, every RGC recorded in the

Schwartz lab will automatically update to [rgctypes.org](https://rgctypes.org). Other researchers are invited to submit data for integration as well. Cells can also be reassigned to different types if evidence supports a different assignment. Full datasets are available for download immediately, regardless of publication status. We have also provided a downloadable version of our automated classifier and instructions on how to prepare a data file to obtain a type prediction and confidence score.

## DISCUSSION

We present a resource of physiological, morphological, and transcriptomic data aimed at establishing a comprehensive typology of mouse RGCs. A summary of our classification and its alignment with previous RGC classifications is provided in Table S3. As multi-modal neuronal classification efforts continue to be a major focus across many labs (BRAIN Initiative Cell Census Network, 2021), we first consider what lessons we have learned from this approach in our dataset that might apply to other regions of the CNS before discussing what our findings have revealed about the retina.

RGCs have a distinct advantage for studies of typology since they form mosaics to tile visual space. Several lines of evidence have now converged on a number of types near 45 in the mouse (Baden et al., 2016; Bae et al., 2018; Tran et al., 2019), and we find 42 types with an estimated coverage of 89%. Each type has functional characteristics that we used to distinguish it from others (Figure 1) and, with few exceptions, these differences were captured by supervised dimensionality reduction of the spike responses to a simple stimulus (Figure 2). Success in clustering responses, however, does not automatically translate into success for an automated classification algorithm (Figure 3). In clustering, there is typically no external ground truth data to assess the validity of the clusters as cell types. We also lacked an absolute ground truth, but we used external validation data not available to our classifier to label one-third of our cells (Table S2) and found performance to be similar (or slightly better) than on our unvalidated type labels. When external validation data are available, future studies of cell typology should report the performance of a cross-validated classifier in addition to measures of cluster separability.

As more studies employ multiple modalities, such as function, morphology, and gene expression, to classify neurons, comparisons of the same cells between modalities will become more frequent. Gene expression impacts both morphology and function, and stratification within the IPL is an important factor in determining the synaptic inputs of RGCs. Thus, one might have expected an even stronger correspondence between the positions of RGC types across modalities (Figures 6D–6F). It is worth noting that such an analysis inevitably simplifies across the large possible space of each modality by dimensionality reduction both at the level of feature selection (a single stimulus type, IPL stratification alone for morphology, gene selection for transcriptomics) and at the level of the UMAP algorithm (down to two dimensions for each modality). For example, specific single genes might be very important for IPL lamination (Krishnaswamy et al., 2015; Liu et al., 2018) yet might fail to group types in transcriptomic space. The high dimensionality required to fully specify a cell type in any single modality might mean that

new distance metrics will be needed to study crossmodal relationships between cell types if such relationships turn out to be important principles of brain architecture or development.

### Method for functional classification

We recorded from RGCs one at a time, which allowed us to center stimuli on the RF of each cell. This undeniably limits throughput. On the other hand, when activities of many RGCs are recorded simultaneously—for example, by calcium imaging or with multielectrode arrays—it is not feasible to center stimuli on individual RGCs, so these studies have used a combination of full-field modulation, large moving objects or gratings, and spatiotemporal white noise. These stimulus choices come with a significant cost. Many RGC types, including some of the most numerous types, respond poorly or not at all to full-field stimuli or spatiotemporal white noise (Jacoby and Schwartz, 2017; Zhang et al., 2012). Other types respond both to small (RF centered) and large stimuli, but basic response properties depend on spot size. For example, the ON small OFF large RGC would be classified as an OFF cell for full-field stimulation but responds as an ON cell for small spots in its RF center. Surround suppression differentially affects both the total spike count and response kinetics in most RGC types (Figure 1) (Wienbar and Schwartz, 2018), providing information that we found necessary to separate otherwise functionally similar types.

### Comparisons with previously defined RGC types

Our 42 RGC types appear to include all 28 types previously identified functionally (referenced in Table S3 and at [rgctypes.org](http://rgctypes.org).) as well as 14 types that have not, to our knowledge, been defined previously. Remarkably, most of these types can be distinguished based on their response patterns to spots of varying size. The total is close to previous estimates (Baden et al., 2016; Bae et al., 2018; Rheaume et al., 2018; Tran et al., 2019), supporting the view that mouse RGC classification is approaching completion. Many of the previously unnamed types had certainly been encountered in previous studies, but we list them as such here based on our belief that they had not been identified separately as distinct functional types (e.g., multiple types had been grouped into “ON transient” and “OFF transient” categories). The types we named include several sets of functionally similar RGCs (ON tr MeRF/ON tr SmRF/ON tr EW6t, OFF tr MeRF/OFF tr SmRF, OFF med sus/OFF sus EW1no/OFF sus EW3o), all of which match 1:1 to morphological types and many to transcriptomic types.

Why did the retina evolve entire populations of RGCs that vary only subtly in function? Of many possible answers, we believe the most likely is that functionally similar types would reveal profound differences under stimulus conditions beyond those in our simple battery. A striking example is Eyewire type 25. This type is abundant (5.8% of the population), and forms a convincing and statistically validated dendritic mosaic (Bae et al., 2018), yet we were unable to find its match in thousands of recordings. A natural hypothesis is that this RGC type does not respond to our standard test stimuli, so it was consistently passed over. Supporting this idea, the calcium responses for type 25 in the Eyewire museum are weak (~1% F/F with low signal-to-noise ratio as opposed to some RGC types that reached 20% F/F). Similarly, we failed to find a clear “trigger feature” for several RGC types (e.g., ON bursty, motion sensor, sSbC EW27). Responses of these cells to flashed spots were

inconsistent. For simplicity and reproducibility, our study omitted the vast space of light stimuli that may have differentiated these cell types, including high luminance, variations in color, and complex forms of motion.

DS and OS RGCs represent a substantial fraction of the RGCs in the mouse retina (14/42; 33% of types). We identified ON-OFF DS RGCs preferring all four cardinal directions (dorsal, ventral, nasal, temporal); ON DS sustained types preferring three different directions, and one ON DS transient type encountered infrequently and with a wide distribution of preferred directions (Figure S7). While there is broad agreement that there are four ON-OFF DS RGC types in the mouse, there is not as strong a consensus about ON DS RGCs. Some studies have reported three types (Estevez et al., 2013) while another reported four (Sabbah et al., 2017). It remains unclear whether this discrepancy is due to one of the ON DS RGC types being transient and the other three being sustained. One study reported a functionally and morphologically distinct ON DS RGC that projects to superior colliculus (SC) and not to the medial terminal nucleus (MTN) or nucleus of the optic tract of the accessory optic system (Gauvain and Murphy, 2015). This SC-projecting ON DS RGC had transient responses and more balanced ON and OFF dendritic strata than the MTN-projecting types, consistent with type 7o in the Eyewire museum. While the previous study on these cells did not report the distribution of their preferred directions (Gauvain and Murphy, 2015), calcium responses for Eyewire type 7o consistently preferred a nearly nasal direction on the retina (Bae et al., 2018). Our sample of ON DS sustained RGCs had a distribution of preferred directions with three clusters, separated by  $\sim 120^\circ$ , but the sparsely sampled ON DS transient RGCs had inconsistent direction preference (Figure S7), and we have so far been unable to reconstruct its morphology. Thus, we have provisionally assigned the ON DS trans RGC to Eyewire type 7o, but it is one of the matches in which we have the least confidence. A more focused study on ON DS RGCs will be needed to resolve this final issue in the classification of DS RGC types.

OS RGCs, described long ago in other species (Levick, 1967; Maturana and Frenk, 1963), were only recently identified in the mouse (Nath and Schwartz, 2016, 2017). OFF OS RGCs were separated into horizontal- and vertical-preferring types based on their physiology, and the vertical-preferring type tended to have ventrally directed dendrites, while horizontally preferring cells had a less consistent asymmetry (Nath and Schwartz, 2017). The Eyewire data did not have a corresponding type, consisting only of cells with strong ventrally directed dendrites, although they note that type “2aw,” with its similar range in dendritic asymmetry, has a much higher coverage factor than the other types and likely corresponds to at least two RGC types that were not separable based on morphology alone (Bae et al., 2018). Given these facts and the corresponding stratification patterns between these types, we are confident in the categorization of both OFFhOS and OFFvOS RGCs as Eyewire type 2aw. ON OS RGCs were also classified into horizontal- and vertical-preferring types when they were reported in mouse (Nath and Schwartz, 2016), but here we further subdivide each group into separate “Small RF” and “Large RF” types based on the spot size to which they respond optimally and their degree of surround suppression. All four ON OS RGC types are among the largest in the retina in terms of dendritic span, so their morphology is captured incompletely in the Eyewire dataset. Nonetheless, we have been able to assign each of these functional OS RGC types to its most likely matching morphological type.



We identified three RGC types as SbC, and a fourth, the ON delayed RGC, has been classified as an SbC RGC under some conditions (Jacoby and Schwartz, 2018; Tien et al., 2015). The RGC type that we originally identified as the sustained SbC (Jacoby et al., 2015) has now been split into two types (EW27 and EW28) based on both physiological and morphological criteria. The bursty SbC RGC is distinguished from the sustained SbC types by its much higher baseline firing rate, more transient suppression, and monostratified morphology (Wienbar and Schwartz, 2022). Overall, our data underscore the fact that, like the other three polarities (ON, OFF, and ON-OFF), SbC is a response class composed of multiple RGC types (Jacoby and Schwartz, 2018).

### Relationships between morphology, function, and gene expression

Having matched functional, morphological, and transcriptomic information for most RGC types, we were able to assess the relationships among these properties. Disappointingly, proximity of types as assessed by any single criterion failed to strongly predict proximity by either of the other two criteria (Figures 6D–6F. For transcriptomic relationships, one possibility is that genes expressed during development, when morphology and connectivity are being established, will need to be taken into account. On the other hand, the comparison between morphology and function was valuable in highlighting three unexpected trends. First, there are many exceptions to the rule that RGCs with dendrites in the outer half of the IPL have OFF responses. The M1 ipRGC was a well-known exception because it receives ectopic synapses from ON bipolar cells in the outer IPL (Dumitrescu et al., 2009), but it is far from the only exception to this rule. All four ON OS RGC types, the ON delayed, the M6, and both sSbC types have OFF dendrites but lack OFF spike responses. In addition, the OFF OS RGCs and the F-mini-ON RGC receive OFF input via gap junctions but lack OFF bipolar cell input under any stimulus condition we have tested (Cooler and Schwartz, 2020; Nath and Schwartz, 2017). An important caveat is that stimuli beyond our test set could reveal OFF responses, perhaps in bright conditions (Pearson and Kerschensteiner, 2015; Tikidji-Hamburyan et al., 2015).

Second, the dendritic area of an RGC has often been associated with the size of its RF center. While this association has a strong basis in the anatomy of the vertical excitatory pathways of the retina, there are a number of exceptions in our data set. For example, Small RF and Large RF ON OS RGC types do not differ appreciably in dendritic area, and M6 RGCs have smaller RFs than ON delayed RGCs despite substantially larger dendritic area. Differential influences of inhibition and disinhibition likely explain some of these effects (Mani and Schwartz, 2017; Wienbar and Schwartz, 2018).

Finally, RGCs with dendrites near the inner and outer margins of the IPL are typically assumed to have more sustained light responses while those stratifying near the middle of the IPL are assumed to be more transient (Awatramani and Slaughter, 2000; Roska and Werblin, 2001). This association has gained support from large-scale measurements of the kinetics of glutamate release from bipolar cells throughout the IPL (Franke et al., 2017; Marvin et al., 2013). While our data generally fit this trend, there were two notable exceptions. The M6 RGC is transient despite stratification at both margins of the IPL, and



the LED RGC is sustained despite stratification near the middle of the IPL (Jacoby and Schwartz, 2017).

The literature linking gene expression, in particular RGC types to their morphology and function, has been fragmentary because the lack of known matches has prevented a wide view. We found that expression of the gene *Tusc5* is strongly associated with a particular physiological profile (transient light responses and strong surround suppression) and a morphological profile (stratification between the ChAT bands) (Figure 5B). As more information about each of the RGC types becomes available, including their projection patterns in the brain, we expect more insights into the molecular determinants of RGC wiring patterns both within the retina and to the brain. Future studies may also link biophysical properties of RGCs to the expression of ion channels.

### Web-based resource

Standardization in the definitions of RGC types among different research groups is essential to support studies on retinal computation, circuit connectivity, and disease pathology. In addition, there is rapidly expanding interest in the projection patterns of different RGC types throughout the brain (Dhande et al., 2015; Johnson et al., 2021; Martersteck et al., 2017), which similarly relies on standardized type definitions. For these reasons, we created an open online resource at [rgctypes.org](https://rgctypes.org), where users can search and download full datasets, use our classification algorithm, and contribute their own data to this effort. By unifying the separate functional, morphological, and molecular RGC classification schemas, this resource will allow researchers to connect data across experimental modalities.

### Limitations of the study

Several limitations of our dataset suggest directions for future work. First, our stimuli were limited to a single wavelength distribution, a small range of scotopic to mesopic luminance, and a simple set of artificial patterns (spots, gratings, and moving bars). These stimulus choices meant that we could not explore how RGC responses differed over the parameters of luminance or wavelength. More generally, RGCs evolved not for selectivity to the artificial parameterized stimuli we presented but to detect behaviorally relevant features of natural scenes. Second, while centering the stimulus for each RGC was important for measuring the spatial features of its response, this step complicates the recovery of locally complete RGC mosaics. Therefore, a future step in RGC typology alignment will be needed to match our types with those in large-scale recordings using either calcium imaging or multi-electrode arrays. We hope to collaborate with other labs performing large-scale RGC recordings with some version of a sparse noise stimulus to validate the robustness of our functional classification across labs and preparations. Finally, our morphological alignment to the Eyewire dataset was not validated by a classification algorithm. The limited number of cells in both datasets and their methodological differences made such a morphology classifier impractical, but with additional data an RGC morphology classifier is a goal (Laturnus and Berens, 2021). Since our functional classification algorithm produces a posterior probability for each class, functional and morphological information could be incorporated seamlessly into a single prediction. Similarly, our improving understanding of the gene expression

profiles of each RGC type could enable more accurate composite predictions from the expression of a few key genes plus functional and/or morphological data.

## STAR★METHODS

### RESOURCE AVAILABILITY

**Lead contact**—Further information and requests for resources and reagents should be directed to and will be fulfilled by the lead contact, Gregory Schwartz (greg.schwartz@northwestern.edu).

**Materials availability**—This study did not generate new unique reagents.

#### Data and code availability

- Functional and transcriptomic data from this study are available at [rgctypes.org](https://rgctypes.org) and will be continuously updated. Morphological data and any additional raw data will be shared by the lead contact upon request.
- Tracings of all RGCs included in the morphology study are available at Mendeley Data (<https://doi.org/10.17632/8f435gyybb.1>)
- All original code has been deposited at Zenodo and is publicly available as of the date of publication. DOIs are listed in the key resources table.
- Any additional information required to reanalyze the data reported in this paper is available from the lead contact upon request.

### EXPERIMENTAL MODEL AND SUBJECT DETAILS

**Animals**—Wild-type mice (C57/B16 - JAX 000664) of either sex were housed and cared for at the Northwestern University Northwestern University Center for Comparative Medicine. They were housed with siblings in groups up to 4, fed normal mouse chow and maintained on a 12:12 h light/dark cycle. Mice were dark-adapted overnight and sacrificed at 4 to 12 weeks of age according to standards provided by Northwestern University Center for Comparative Medicine and approved by the Institutional Animal Care and Use Committee (IACUC). 4 transgenic lines were used to target subsets of RGCs. All other mice were WT.

PV-Cre (JAX #008069) x Ai14 (JAX #007908): 4 animals.

Opn4-GFP (Generous gift from lab of Tiffany Schmidt, Northwestern University): 2 animals.

TYW3-GFP (Lab of author J. Sanes): 9 animals.

JAMB-eYFP (Lab of author J. Sanes): 3 animals.

### METHOD DETAILS

**Ex vivo retina preparation**—Retinal tissue was isolated under infrared illumination (900 nm) with the aid of night-vision goggles and IR dissection scope attachments (BE Meyers). Retinal orientation was identified using scleral landmarks (Wei et al., 2010), and preserved

using relieving cuts in cardinal directions, with the largest cut at the ventral retina. Retinas were mounted on 12mm poly-D-lysine coated glass affixed to a recording dish with grease, with the ganglion cell layer up. Oxygenation was maintained by superfusing the dish with carbogenated Ames medium (US Biological, A1372–25) warmed to 32°C. Our dataset included 1859 recorded RGCs from 551 eyes of 544 animals.

**Visual stimuli**—RGC types were identified via cell-attached capacitive spike train responses to light stimuli as previously described (Jacoby and Schwartz, 2017; Jacoby et al., 2015; Mani and Schwartz, 2017; Nath and Schwartz, 2016, 2017). Briefly, stimuli were presented using a custom designed light-projector (DLP LightCrafter; Texas Instruments) at a frame rate of 60 Hz. Spatial stimuli patterns were generated on a 912 × 1140-pixel digital projector using blue (450nm) LEDs focused on the photoreceptor layer. Neutral density filters (Thorlabs) were used to attenuate the light intensity of stimuli to 200 rhodopsin isomerizations per rod per second ( $R^*/rod/s$ ) from darkness.

The receptive field (RF) centers of individual RGCs were determined by monitoring their relative light responses to horizontal and vertical bars ( $200 \times 40 \mu m$ , or  $100 \times 40 \mu m$  in the case of cells with high surround suppression) flashed at 30  $\mu m$  intervals at 11 locations along each axis. Subsequent stimuli were presented at the RF center. For generic light steps, a spot of 200  $\mu m$  diameter was presented for 1 s, with cell-attached responses recorded for at least 0.5 s pre-stimulus and 1s post-stimulus. For spots of multiple sizes, spots with diameters from 30 to 1200  $\mu m$  (on a logarithmic scale) were presented in pseudorandom order, with similarly timed epochs. Direction preference of direction-selective (DS) RGCs was determined by moving bar stimuli, consisting of a rectangular bar ( $600 \times 200 \mu m$ ) passing through the receptive field center at 1000  $\mu m/s$  (ON-OFF DS RGCs) or 500  $\mu m/s$  (ON DS RGCs). Flashed bar stimuli for testing orientation selectivity were  $800 \times 50 \mu m$  and presented at 12 different orientations (Nath and Schwartz, 2016). Drifting gratings and contrast series were presented from a background luminance of 1000  $R^*/rod/s$  following protocols from previous studies (Jacoby et al., 2015; Nath and Schwartz, 2017).

**Imaging**—A subset of recorded RGCs were injected with Neurobiotin (Vector Laboratories, SP-1150, ~3% w/v and ~280 mOsm in potassium aspartate internal solution) using patch pipettes. Retinas were then fixed in 4% paraformaldehyde for 15 min at 25°C, washed three times with PBS, and incubated for 1 h in blocking solution (1× PBS with 3% normal donkey serum, 0.05% sodium azide, 0.5% Triton X-100) including streptavidin conjugated to a fluorophore (Alexa Fluor 488 or Alexa Fluor 568). Next, retinas were incubated again in blocking solution with primary antibody against choline acetyltransferase (ChAT; Millipore, AB144P, goat anti-ChAT, 1:1000) for 5 nights at 4°C. Retinas were then rinsed in PBS three times at no less than 1 h per wash before incubation overnight at 4°C with streptavidin (Jackson, 016-600-084) and secondary antibody (Donkey anti-Goat 647, Fisher, A11055). Retinas were then rinsed again in PBS three times at no less than 1 h per wash before mounting on slides with Fluoromount.

RGCs filled with AlexaFluor were imaged immediately using two-photon microscopy (920 nm, MaiTai HP; SpectraPhysics) under a 60× water-immersion objective (Olympus LUMPLan FLN 60×/1.00 numerical aperture). A 520–540 nm band-pass filter was used

to collect emission. After immunohistochemistry, confocal imaging was performed at the Center for Advanced Microscopy at North-western University Feinberg School of Medicine generously supported by NCI CCSG P30 CA060553 awarded to the Robert H Lurie Comprehensive Cancer Center. Dendrites were traced in Fiji using the SNT plugin (Arshadi et al., 2021).

### Single-cell transcriptomics

**Library generation:** Following physiological recording, a subset of RGCs was isolated for single-cell transcriptome sequencing. First, the area surrounding cells of interest was cleaned of nearby cells and visible debris by aspiration through a large (3–4µm inner diameter) patch pipette. Cells were then aspirated using a freshly flame-pulled patch pipette (2.5 inner diameter) and placed into a 5 µL of lysis Buffer TCL (Qiagen, 1031576) + 1% 2-mercaptoethanol (Millipore-Sigma, 63689) before being flash-frozen on dry ice.

We generated RNA-Seq libraries using a modified Smart-seq2 method (Picelli et al., 2014) with the following minor changes: Before reverse transcription, RNA was purified using 2.2× SPRI-beads (Beckman Coulter, A3987) followed by 3 wash steps with 80% EtOH, elution in 4 µL of RT primer mix and denatured at 72°C for 3 min. Six µL of the first-strand reaction mix, containing 0.1 µL SuperScript II reverse transcriptase (200 U/µL, Invitrogen), 0.25 µL RNase inhibitor (40 U/µL, Clontech), 2 µL Superscript II First-Strand Buffer (5×, Invitrogen), 0.1 µL MgCl<sub>2</sub> (100 mM, Sigma), 0.1 µL TSO (100 µM) and 3.45 µL Trehalose (1M), were added to each sample. Reverse transcription was carried out at 50°C for 90 min followed by inactivation at 85°C for 5 min. After PCR preamplification, product was purified using a 0.8× of AMPsure XP beads (Beckman Coulter), with the final elution in 12 µL of EB solution (Qiagen). For tagmentation the Nextera DNA Sample Preparation kit (FC-131-1096, Illumina) was used and final PCR was performed as follows: 72°C 3 min, 95°C 30 s, then 12 cycles of (95°C 10 s, 55°C 30 s, 72°C 1 min), 72°C 5min. Purification was done with a 0.9× of AMPure XP beads. Libraries were diluted to a final concentration of 2 nM, pooled and sequenced on Next-Seq(Mid), 75bp paired end.

**Alignment and quantification of scRNA-cell transcriptomic libraries:** Gene expression levels were quantified using RNA-seq by Expectation Maximization (RSEM) (Li and Dewey, 2011). Under the hood, Bowtie 2 (Langmead and Salzberg, 2012) was used to map paired-end reads to a mouse transcriptome index (mm10/GRCm38 UCSC build). RSeQC (Wang et al., 2012) was used to quantify quality metrics for the alignment results. We only considered cells where the read alignment rate to the genome and transcriptome exceeded 85% and 35% respectively, and the total number of transcriptome-mapped reads was less than 350,000. RSEM yielded an expression matrix (genes x samples) of transcript per million counts (TPM), which were log-transformed after the addition of 1 to avoid zeros. Overall 103 RGCs, each of which carried a functional type label, were selected for further analysis.

## QUANTIFICATION AND STATISTICAL ANALYSIS

**Functional response metrics**—We measured 6 standard response metrics from the flashed spots data. Distributions for each metric for each RGC type are shown in Figure S4.

Baseline firing rate: Mean firing rate in darkness before spot presentation across all trials.

Peak firing rate: Highest firing rate (baseline subtracted) achieved in a 10 ms bin at light onset or offset across all spot sizes.

Peak response latency: Time from light onset or offset until the peak firing rate.

Response duration: Time from peak firing rate until firing rate drops below baseline +10 percent.

Suppression index: First we determined the dominant polarity for the cell by whether the maximum ON or OFF response (in total spike count from baseline) was larger across spot sizes. For the dominant polarity, the suppression index was the ratio of the difference between this maximum response and the response to the largest (1200  $\mu\text{m}$ ) spot divided by the sum of these two quantities.

ON:OFF index: Maximum ON response across spot sizes (spike count from baseline) minus the maximum OFF response divided by the sum of these two quantities.

**Automated classification**—A classifier was trained to recognize RGC types based on cell-attached recordings of responses to spots of multiple sizes. RGC type labels were assigned manually by two of the authors (JG and GWS), and cells were further labeled as externally validated or unvalidated by GWS based on the presence of identifying data not available to the classifier, including morphological, transcriptomic, whole-cell, and physiological (response to moving bars or drifting gratings) data. Types with 5 or fewer examples were excluded from training, and OS and DS cells were condensed across orientation/direction based on the similarity of their light responses to spots of multiple sizes.

Cells were randomly assigned to a testing set (~25% of cells) and a training set, which was further subdivided into a training set for a base classifier (~50% of cells) and a calibration set (~25% of cells). The scheme favored assignment of validated cells to the calibration set and unvalidated cells to the training set for the base classifier. The classifier implements a semi-supervised learning model: a base classifier learns to recognize features of the probability distribution of RGC light responses that are useful for predicting the manual labels, subject to labeling error; this knowledge is “transferred” by the calibrator to reweight the base model’s predictions in order to better predict the labels which are influenced by external validation. Thus we minimize error propagation while maintaining a large enough training set to form robust predictions about RGC type.

The multi-class classification problem was broken down into a series of binary ones using the error-correcting output code (ECOC) scheme, such that a series of classifiers each learns to discern different combinations of RGC types. Each binary learner in the ECOC scheme was trained using Ada-boosted decision trees (Hastie et al., 2009) with initial weights set to enforce a uniform prior probability of each RGC type.

Individual trees were trained by performing elastic net logistic regression on a random subset of firing rates from peristimulus time histogram (PSTH) vs. spot size for feature reduction and choosing the threshold that minimized class uncertainty (Friedman et al., 2010; Schneider et al., 2015). Since not all PSTHs were recorded over the same time and spot size ranges, we imputed missing data using a nearest neighbor approach. Poorly sampled points were penalized in both random selection and regression: for time points the penalty was inversely proportional to their frequency of occurrence across cells (since all PSTHs were binned with the same  $\Delta t$ ); for spot sizes we aimed to account for the nonlinearity of responses in the penalty with the following formula:

$$\text{penalty}^{-1}(s) \propto \max(\log(\text{MSE}(\cdot))_+, -\log(\text{MSE}(s))_+),$$

where MSE is the mean across cells of the squared error between the chosen spot size,  $s$ , and the nearest recorded spot size, and  $(\bullet)_+$  denotes positive rectification.

To implement the calibrator, the calibration fold was used to train an isotonic regression model that transformed each binary learner score into a probability, again enforcing a uniform prior using sample weighting (Zadrozny and Elkan, 2002). The probabilities from each binary learner were then coupled to obtain a probability for each class (Zadrozny, 2002).

We used three-fold cross validation to train a Bayesian optimization model for hyperparameter tuning. The table below lists the hyperparameters we optimized and their final values. The classifier is available for use at [rgctypes.org](http://rgctypes.org), and the link to the source code is in the Key Resources Table.

**Morphology analysis**—Dendrite skeleton images were flattened using a custom MATLAB tool based on the method in (Sümbül et al., 2014) and available at the link provided in the Key resources table. In cases where we had ChAT staining, the ChAT bands were used as the reference surfaces. In cases where ChAT staining was not available, we used a smoothed version of each (hand-selected) stratum as reference surfaces and used soma position to register to IPL depth. In addition to the stratification profile, we computed 10 additional metrics from each arbor skeleton. All of these metrics were combined for the unsupervised clustering analyzed in Figure S5.

*Area.* Area of the polygon connecting the tips of the dendrites in each stratum.

*Convexity Index.* Convex hull area around each stratum divided by the polygon area.

*Total length.* Linear length of dendritic tree.

*Arbor density.* Linear length divided by area for each stratum.

*Arbor complexity.* Number of branches divided by total length.

*Soma size.* Diameter of soma at its largest axial cross section.



*Branch length.* Distribution of lengths of all branches of the dendritic tree.

*Branch angle.* Distribution of angles at branch points in the arbor.

*Tortuosity.* Distribution of path length divided by Euclidean distance between endpoints for each branch.

*Depth range.* Distribution of range in depth in the IPL spanned by each branch.

**Matching gene-expression clusters to cell types**—To map each of the 103 RGC transcriptomes to a molecular cluster in Tran et al. (2019) we used the XGboost algorithm (Chen and Guestrin, 2016), as implemented in the R package *xgboost*. Briefly, we trained and validated an *xgboost* multi-class classifier on the atlas of 35,699 RGCs subdivided into 45 molecularly distinct groups (C1-C45). Around 50% of the data was used for training and the remaining 50% was held out and used for validation. We optimized hyperparameters (e.g. tree depth, number of features, class-specific weights) to achieve a validation set accuracy of >90% across each of the 45 transcriptomic classes. This trained classifier was then used to assign a cluster label for each of the 105 transcriptomes profiled in this study. We assigned a transcriptomic label to each RGC if a minimum of 15% of trees in the forest voted on the majority decision. This choice of voting margin was >6× higher than the random threshold of 2.3%, based on the fact that there are 45 classes. The correspondences between functional and transcriptomic labels were visualized as confusion matrices.

**UMAP and cross-modality neighborhood comparisons**—The functional input data to the UMAP algorithm was a linearized version of the full matrix of the PSTH for each cell across spot sizes (as in Figure 1). We used a MATLAB implementation of UMAP (<https://www.mathworks.com/matlabcentral/fileexchange/71902>) supervised by the RGC type labels for the dataset of 1859 cells. The input to the UMAP algorithm for morphology was the unnormalized stratification profile for each RGC from the Eyewire museum (381 cells) supervised by the labels in the museum. Although no attempt was made to capture details of the *en face* morphological characteristics of each cell, the unnormalized stratification data allowed the algorithm to use information about total dendritic length. The input to the UMAP algorithm for transcriptomic space was a vector of gene expression values for RGC-type-selective genes from the published dataset (~35,699 cells) as described in (Tran et al., 2019).

We measured similarities between the three UMAP spaces (function, morphology, and genetics) by comparing nearest neighbors between spaces. For each RGC type in which we established a match between the two spaces being compared, we measured the fractional overlap between the nearest neighbors in the first space and those in the second space (matching types/neighborhood size). The analysis was repeated for neighborhood sizes from 2–12. To assess the statistics of the measured overlap values, we created a bootstrap distribution by randomly shuffling the cluster identities in one of the spaces. Data in Figures 6D–6F are z scores with respect to this bootstrap distribution which was Gaussian.



## Supplementary Material

Refer to Web version on PubMed Central for supplementary material.

## ACKNOWLEDGMENTS

We would like to thank all the members of the Schwartz Lab past and present, each one of whom has contributed to this dataset over the past 8 years. We thank Kavin Suritharen and Shikhar Gupta for their help with tracing RGC dendrites, and we thank the countless colleagues with whom we have discussed this work over the years. Funding for this work was provided by NEI (R01EY031029, R01EY031329, and DP2 EY026770 to G.W.S.; R00EY028625 to K.S.; F30EY031565 to Z.F.J.; F31EY029593 to S.C.; and EY022073 to J.R.S.), NIH (MH105960 to J.R.S. and T32MH067564 to D.G.), NIGMS (T32GM008152 to Z.F.J.), the Karl Kirchgessner Foundation (to G.W.S.), the Chicago Biomedical Consortium Catalyst Award (A2011-00985 to J.G., J.S., S.K., and G.W.S.), the VitreoRetinal Surgical Foundation fellowship award (to Z.F.J.), and the Knights Templar Eye Foundation (to A.M.).

## REFERENCES

- Arshadi C, Günther U, Eddison M, Harrington KIS, and Ferreira TA (2021). SNT: a unifying toolbox for quantification of neuronal anatomy. *Nat. Methods* 18, 374–377. 10.1038/s41592-021-01105-7. [PubMed: 33795878]
- Awatramani GB, and Slaughter MM (2000). Origin of transient and sustained responses in ganglion cells of the retina. *J. Neurosci* 20, 7087–7095. 10.1523/jneurosci.20-18-07087.2000. [PubMed: 10995856]
- Baden T, Berens P, Franke K, Román Rosón M, Bethge M, and Euler T (2016). The functional diversity of retinal ganglion cells in the mouse. *Nature* 529, 345–350. 10.1038/nature16468. [PubMed: 26735013]
- Bae JA, Mu S, Kim JS, Turner NL, Tartavull I, Kemnitz N, Jordan CS, Norton AD, Silversmith WM, Prentki R, et al. (2018). Digital museum of retinal ganglion cells with dense anatomy and physiology. *Cell* 173, 1293–1306.e19. 10.1016/j.cell.2018.04.040. [PubMed: 29775596]
- Becht E, McInnes L, Healy J, Dutertre C-A, Kwok IWH, Ng LG, Ginhoux F, and Newell EW (2018). Dimensionality reduction for visualizing single-cell data using UMAP. *Nat. Biotechnol* 10.1038/nbt.4314.
- Bleckert A, Schwartz GW, Turner MH, Rieke F, and Wong ROL (2014). Visual space is represented by nonmatching topographies of distinct mouse retinal ganglion cell types. *Curr. Biol* 24, 310–315. 10.1016/j.cub.2013.12.020. [PubMed: 24440397]
- Borghuis BG, Looger LL, Demb JB, and Demb JB (2013). Two-photon imaging of nonlinear glutamate release dynamics at bipolar cell synapses in the mouse retina. *J. Neurosci* 33, 10972–10985. 10.1523/jneurosci.1241-13.2013. [PubMed: 23825403]
- BRAIN Initiative Cell Census Network BICCN (2021). A multimodal cell census and atlas of the mammalian primary motor cortex. *Nature* 598, 86–102. 10.1038/s41586-021-03950-0. [PubMed: 34616075]
- Cadwell CR, Palasantza A, Jiang X, Berens P, Deng Q, Yilmaz M, Reimer J, Shen S, Bethge M, Tolias KF, et al. (2016). Electrophysiological, transcriptomic and morphologic profiling of single neurons using Patch-seq. *Nat. Biotechnol* 34, 199–203. 10.1038/nbt.3445. [PubMed: 26689543]
- Chen T, and Guestrin C (2016). XGBoost: A Scalable Tree Boosting System In Proceedings of the 22nd ACM SIGKDD International Conference on Knowledge Discovery and Data Mining, pp. 785–794.
- Close JL, Long BR, and Zeng H (2021). Spatially resolved transcriptomics in neuroscience. *Nat. Methods* 18, 23–25. 10.1038/s41592-020-01040-z. [PubMed: 33408398]
- Cooler S, and Schwartz GW (2020). An offset ON–OFF receptive field is created by gap junctions between distinct types of retinal ganglion cells. *Nat. Neurosci* 24, 1–11.
- Dhande OS, Stafford BK, Lim J-HA, and Huberman AD (2015). Contributions of retinal ganglion cells to subcortical visual processing and behaviors. *Annu. Rev. Vis. Sci* 1, 291–328. 10.1146/annurev-vision-082114-035502. [PubMed: 28532372]

- Dumitrescu ON, Pucci FG, Wong KY, and Berson DM (2009). Ectopic retinal ON bipolar cell synapses in the OFF inner plexiform layer: contacts with dopaminergic amacrine cells and melanopsin ganglion cells. *J. Comp. Neurol* 517, 226–244. 10.1002/cne.22158. [PubMed: 19731338]
- Ester M, Kriegel H-P, Sander J, and Xu X (1996). A density-based algorithm for discovering clusters in large spatial databases with noise. In *Kdd 96*, 226–231.
- Estevez M, Quattrocchi L, Dhande O, Kim I, Firman T, Eldanaf R, Huberman A, and Berson D (2013). Form and function of the three ON-type direction-selective retinal ganglion cells in the *Hoxd10* mouse. *Invest. Ophthalmol. Vis. Sci* 54, 1298.
- Euler T, Franke K, and Baden T (2019). Studying a light sensor with light: multiphoton imaging in the retina. In *Multiphoton Microscopy*, Hartveit E, ed. (Springer), pp. 225–250.
- Farrow K, and Masland RH (2011). Physiological clustering of visual channels in the mouse retina. *J. Neurophysiol* 105, 1516–1530. 10.1152/jn.00331.2010. [PubMed: 21273316]
- Franke K, Berens P, Schubert T, Bethge M, Euler T, and Baden T (2017). Inhibition decorrelates visual feature representations in the inner retina. *Nature* 542, 439–444. 10.1038/nature21394. [PubMed: 28178238]
- Friedman J, Hastie T, and Tibshirani R (2010). Regularization paths for generalized linear models via coordinate descent. *J. Stat. Softw* 33, 1–22. 10.18637/jss.v033.i01. [PubMed: 20808728]
- Gauvain G, and Murphy GJ (2015). Projection-specific characteristics of retinal input to the brain. *J. Neurosci* 35, 6575–6583. 10.1523/jneurosci.4298-14.2015. [PubMed: 25904807]
- Grimes WN, Schwartz GW, and Rieke F (2014). The synaptic and circuit mechanisms underlying a change in spatial encoding in the retina. *Neuron* 82, 460–473. 10.1016/j.neuron.2014.02.037. [PubMed: 24742466]
- Hastie T, Rosset S, Zhu J, and Zou H (2009). Multi-class adaboost. *Stat. Interface* 2, 349–360. 10.4310/sii.2009.v2.n3.a8.
- Hodge RD, Bakken TE, Miller JA, Smith KA, Barkan ER, Graybuck LT, Close JL, Long B, Johansen N, Penn O, et al. (2019). Conserved cell types with divergent features in human versus mouse cortex. *Nature* 573, 61–68. 10.1038/s41586-019-1506-7. [PubMed: 31435019]
- Hoon M, Okawa H, Della Santina L, and Wong ROL (2014). Functional architecture of the retina: development and disease. *Prog. Retin. Eye Res* 42, 44–84. 10.1016/j.preteyeres.2014.06.003. [PubMed: 24984227]
- Jacoby J, and Schwartz GW (2017). Three small-receptive-field ganglion cells in the mouse retina are distinctly Tuned to size, speed, and object motion. *J. Neurosci* 37, 610–625. 10.1523/jneurosci.2804-16.2016. [PubMed: 28100743]
- Jacoby J, and Schwartz GW (2018). Typology and circuitry of suppressed-by-contrast retinal ganglion cells. *Front. Cell. Neurosci* 12, 269. 10.3389/fncel.2018.00269. [PubMed: 30210298]
- Jacoby J, Zhu Y, DeVries SH, and Schwartz GW (2015). An amacrine cell circuit for signaling steady illumination in the retina. *Cell Rep* 13, 2663–2670. 10.1016/j.celrep.2015.11.062. [PubMed: 26711334]
- Joesch M, and Meister M (2016). A neuronal circuit for colour vision based on rod–cone opponency. *Nature* 532, 236–239. 10.1038/nature17158. [PubMed: 27049951]
- Johnson KP, Fitzpatrick MJ, Zhao L, Wang B, McCracken S, Williams PR, and Kerschensteiner D (2021). Cell-type-specific binocular vision guides predation in mice. *Neuron* 109, 1527–1539.e4. 10.1016/j.neuron.2021.03.010. [PubMed: 33784498]
- Johnson KP, Zhao L, and Kerschensteiner D (2018). A pixel-encoder retinal ganglion cell with spatially offset excitatory and inhibitory receptive fields. *Cell Rep* 22, 1462–1472. 10.1016/j.celrep.2018.01.037. [PubMed: 29425502]
- Jouty J, Hilgen G, Sernagor E, and Hennig MH (2018). Non-parametric physiological classification of retinal ganglion cells in the mouse retina. *Front. Cell. Neurosci* 12, 481. 10.3389/fncel.2018.00481. [PubMed: 30581379]
- Kay JN, Chu MW, and Sanes JR (2012). MEGF10 and MEGF11 mediate homotypic interactions required for mosaic spacing of retinal neurons. *Nature* 483, 465–469. 10.1038/nature10877. [PubMed: 22407321]

- Krieger B, Qiao M, Rouso DL, Sanes JR, and Meister M (2017). Four alpha ganglion cell types in mouse retina: function, structure, and molecular signatures. *PLoS One* 12, e0180091. 10.1371/journal.pone.0180091. [PubMed: 28753612]
- Krishnaswamy A, Yamagata M, Duan X, Hong YK, and Sanes JR (2015). Sidekick 2 directs formation of a retinal circuit that detects differential motion. *Nature* 524, 466–470. 10.1038/nature14682. [PubMed: 26287463]
- Laboulaye MA, Duan X, Qiao M, Whitney IE, and Sanes JR (2018). Mapping transgene insertion sites reveals complex interactions between mouse transgenes and neighboring endogenous genes. *Front. Mol. Neurosci* 11, 385. 10.3389/fnmol.2018.00385. [PubMed: 30405348]
- Langmead B, and Salzberg SL (2012). Fast gapped-read alignment with Bowtie 2. *Nat. Methods* 9, 357–359. [PubMed: 22388286]
- Laternus S, and Berens P (2021). MorphVAE: generating neural morphologies from 3D-walks using a variational autoencoder with spherical latent space. Preprint at bioRxiv 10.1101/2021.06.14.448271.
- Levick WR (1967). Receptive fields and trigger features of ganglion cells in the visual streak of the rabbit's retina. *J. Physiol* 188, 285–307. 10.1113/jphysiol.1967.sp008140. [PubMed: 6032202]
- Li B, and Dewey CN (2011). RSEM: accurate transcript quantification from RNA-Seq data with or without a reference genome. *BMC Bioinformatics* 12. 10.1186/1471-2105-12-323.
- Liu J, Reggiani JDS, Laboulaye MA, Pandey S, Chen B, Rubenstein JLR, Krishnaswamy A, and Sanes JR (2018). Tbr1 instructs laminar patterning of retinal ganglion cell dendrites. *Nat. Neurosci* 21, 659–670. 10.1038/s41593-018-0127-z. [PubMed: 29632360]
- MacKay DJC, and Mac DJ (2003). *Information Theory, Inference and Learning Algorithms* (Cambridge University Press).
- Mani A, and Schwartz GW (2017). Circuit mechanisms of a retinal ganglion cell with stimulus-dependent response latency and activation beyond its dendrites. *Curr. Biol* 27, 471–482. 10.1016/j.cub.2016.12.033. [PubMed: 28132812]
- Marco SD, Di Marco S, Protti DA, and Solomon SG (2013). Excitatory and inhibitory contributions to receptive fields of alpha-like retinal ganglion cells in mouse. *J. Neurophysiol* 110, 1426–1440. 10.1152/jn.01097.2012. [PubMed: 23843429]
- Martersteck EM, Hirokawa KE, Evarts M, Bernard A, Duan X, Li Y, Ng L, Oh SW, Ouellette B, Royall JJ, et al. (2017). Diverse central projection patterns of retinal ganglion cells. *Cell Rep* 18, 2058–2072. 10.1016/j.celrep.2017.01.075. [PubMed: 28228269]
- Maturana HR, and Frenk S (1963). Directional movement and horizontal edge detectors in the pigeon retina. *Science* 142, 977–979. 10.1126/science.142.3594.977. [PubMed: 14069232]
- McInnes L, Healy J, and Melville J (2018). UMAP: uniform manifold approximation and projection for dimension reduction. Preprint at arXiv 10.48550/arXiv.1802.03426.
- Nadal-Nicolas FM, Kunze VP, Ball JM, Peng BT, Krishnan A, Zhou G, Dong L, and Li W (2020). True S-cones are concentrated in the ventral mouse retina and wired for color detection in the upper visual field. *Elife* 9, e56840. 10.7554/elife.56840. [PubMed: 32463363]
- Nath A, and Schwartz GW (2016). Cardinal orientation selectivity is represented by two distinct ganglion cell types in mouse retina. *J. Neurosci* 36, 3208–3221. 10.1523/jneurosci.4554-15.2016. [PubMed: 26985031]
- Nath A, and Schwartz GW (2017). Electrical synapses convey orientation selectivity in the mouse retina. *Nat. Commun* 8, 2025. 10.1038/s41467-017-01980-9. [PubMed: 29229967]
- Pearson JT, and Kerschensteiner D (2015). Ambient illumination switches contrast preference of specific retinal processing streams. *J. Neurophysiol* 114, 540–550. 10.1152/jn.00360.2015. [PubMed: 25995351]
- Picelli S, Faridani OR, Björklund AK, Winberg G, Sagasser S, and Sandberg R (2014). Full-length RNA-seq from single cells using Smart-seq2. *Nat. Protoc* 9, 171–181. [PubMed: 24385147]
- Reese BE, and Keeley PW (2015). Design principles and developmental mechanisms underlying retinal mosaics. *Biol. Rev. Camb. Philos. Soc* 90, 854–876. 10.1111/brv.12139. [PubMed: 25109780]

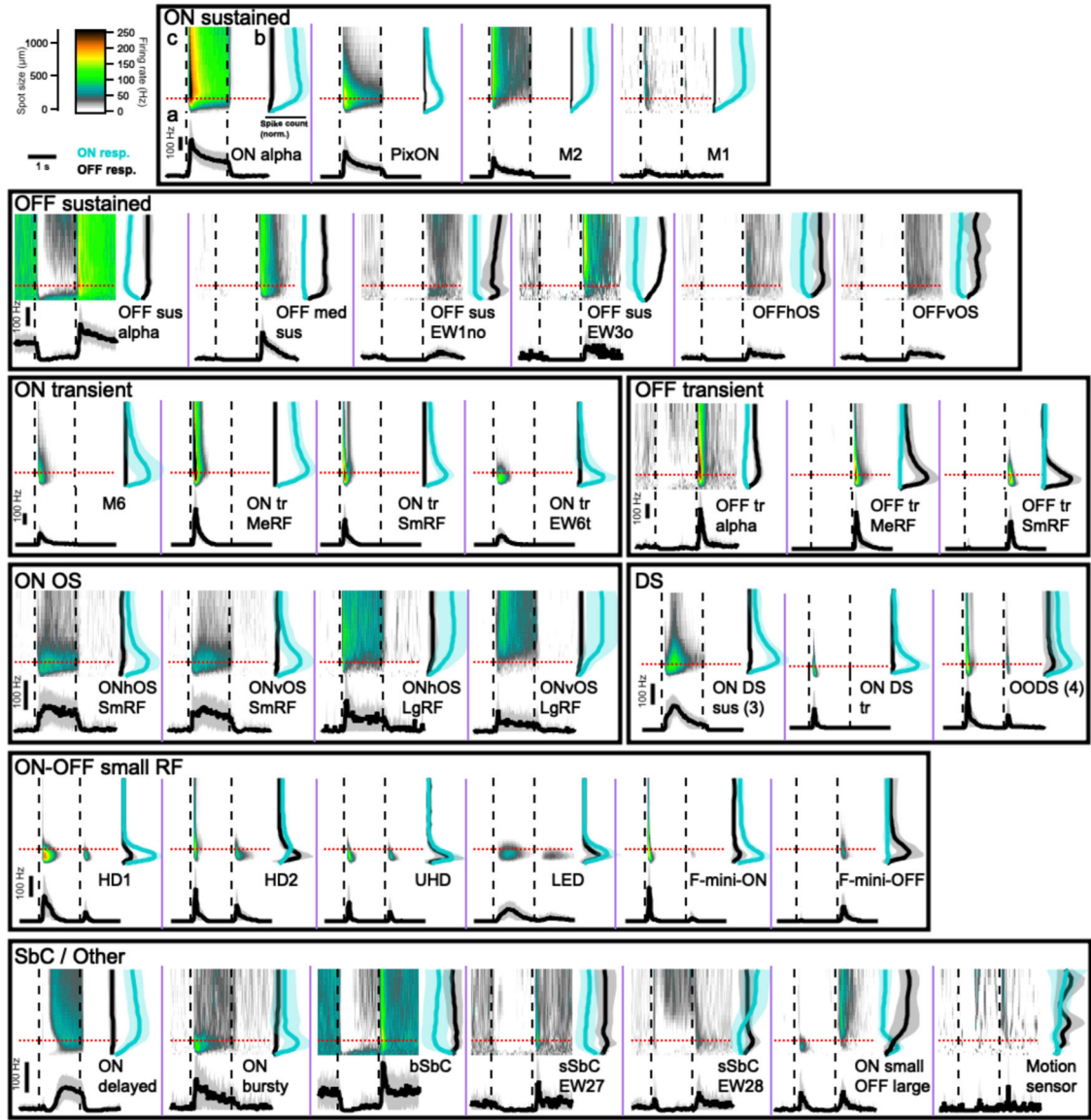
- Regev A, Teichmann SA, Lander ES, Amit I, Benoist C, Birney E, Bodenmiller B, Campbell P, Carninci P, Clatworthy M, et al. (2017). The human cell atlas. *Elife* 6, e27041. [PubMed: 29206104]
- Rheume BA, Jereen A, Bolisetty M, Sajid MS, Yang Y, Renna K, Sun L, Robson P, and Trakhtenberg EF (2018). Single cell transcriptome profiling of retinal ganglion cells identifies cellular subtypes. *Nat. Commun* 9, 2759. 10.1038/s41467-018-05134-3. [PubMed: 30018341]
- Rockhill RL, Euler T, and Masland RH (2000). Spatial order within but not between types of retinal neurons. *Proc. Natl. Acad. Sci. USA* 97, 2303–2307. 10.1073/pnas.030413497. [PubMed: 10688875]
- Roska B, and Werblin F (2001). Vertical interactions across ten parallel, stacked representations in the mammalian retina. *Nature* 410, 583–587. 10.1038/35069068. [PubMed: 11279496]
- Rouso DL, Qiao M, Kagan RD, Yamagata M, Palmiter RD, and Sanes JR (2016). Two pairs of ON and OFF retinal ganglion cells are defined by inter-sectional patterns of transcription factor expression. *Cell Rep* 15, 1930–1944. 10.1016/j.celrep.2016.04.069. [PubMed: 27210758]
- Sabbah S, Gemmer JA, Bhatia-Lin A, Manoff G, Castro G, Siegel JK, Jeffery N, and Berson DM (2017). A retinal code for motion along the gravitational and body axes. *Nature* 546, 492–497. 10.1038/nature22818. [PubMed: 28607486]
- Sanes JR, and Masland RH (2015). The types of retinal ganglion cells: current status and implications for neuronal classification. *Annu. Rev. Neurosci* 38, 221–246. 10.1146/annurev-neuro-071714-034120. [PubMed: 25897874]
- Scala F, Kobak D, Bernabucci M, Bernaerts Y, Cadwell CR, Castro JR, Hartmanis L, Jiang X, Laturus S, Miranda E, et al. (2020). Phenotypic variation of transcriptomic cell types in mouse motor cortex. *Nature* 598, 144–150. 10.1038/s41586-020-2907-3. [PubMed: 33184512]
- Schneider M, Hirsch S, Weber B, Székely G, and Menze BH (2015). Joint 3-D vessel segmentation and centerline extraction using oblique Hough forests with steerable filters. *Med. Image Anal* 19, 220–249. 10.1016/j.media.2014.09.007. [PubMed: 25461339]
- Sümbül U, Song S, McCulloch K, Becker M, Lin B, Sanes JR, Masland RH, and Sebastian Seung H (2014). A genetic and computational approach to structurally classify neuronal types. *Nat. Commun* 5, 3512. 10.1038/ncomms4512. [PubMed: 24662602]
- Surgucheva I, Weisman AD, Goldberg JL, Shnyra A, and Surguchov A (2008). Gamma-synuclein as a marker of retinal ganglion cells. *Mol. Vis* 14, 1540–1548. [PubMed: 18728752]
- Tien N-W, Pearson JT, Heller CR, Demas J, and Kerschensteiner D (2015). Genetically identified suppressed-by-contrast retinal ganglion cells reliably signal self-generated visual stimuli. *J. Neurosci* 35, 10815–10820. 10.1523/jneurosci.1521-15.2015. [PubMed: 26224863]
- Tikidji-Hamburyan A, Reinhard K, Seitter H, Hovhannisyann A, Procyk CA, Allen AE, Schenk M, Lucas RJ, and Münch TA (2015). Retinal output changes qualitatively with every change in ambient illuminance. *Nat. Neurosci* 18, 66–74. 10.1038/nn.3891. [PubMed: 25485757]
- Tran NM, Shekhar K, Whitney IE, Jacobi A, Benhar I, Hong G, Yan W, Adiconis X, Arnold ME, Lee JM, et al. (2019). Single-cell profiles of retinal ganglion cells differing in resilience to injury reveal neuroprotective genes. *Neuron* 104, 1039–1055.e12. 10.1016/j.neuron.2019.11.006. [PubMed: 31784286]
- Wang L, Wang S, and Li W (2012). RSeQC: quality control of RNA-seq experiments. *Bioinformatics* 28, 2184–2185. [PubMed: 22743226]
- Warwick RA, Kaushansky N, Sarid N, Golan A, and Rivlin-Etzion M (2018). Inhomogeneous encoding of the visual field in the mouse retina. *Curr. Biol* 28, 655–665.e3. 10.1016/j.cub.2018.01.016. [PubMed: 29456141]
- Wassle H, Peichl L, and Boycott BB (1981). Dendritic territories of cat retinal ganglion cells. *Nature* 292, 344–345. 10.1038/292344a0. [PubMed: 7254331]
- Wei W, Elstrott J, and Feller MB (2010). Two-photon targeted recording of GFP-expressing neurons for light responses and live-cell imaging in the mouse retina. *Nat. Protoc* 5, 1347–1352. 10.1038/nprot.2010.106. [PubMed: 20595962]
- Wienbar S, and Schwartz GW (2018). The dynamic receptive fields of retinal ganglion cells. *Prog. Retin. Eye Res* 67, 102–117. 10.1016/j.preteyeres.2018.06.003. [PubMed: 29944919]

- Wienbar S, and Schwartz GW (2022). Differences in spike generation instead of synaptic inputs determine the feature selectivity of two retinal cell types. *Neuron* 110, 1. 10.1016/j.neuron.2022.04.012. [PubMed: 34990574]
- Wilbrey-Clark A, Roberts K, and Teichmann SA (2020). Cell Atlas technologies and insights into tissue architecture. *Biochem. J* 477, 1427–1442. 10.1042/bcj20190341. [PubMed: 32339226]
- Yuste R, Hawrylycz M, Aalling N, Aguilar-Valles A, Arendt D, Armañanzas R, Ascoli GA, Bielza C, Bokharaie V, Bergmann TB, et al. (2020). A community-based transcriptomics classification and nomenclature of neocortical cell types. *Nat. Neurosci* 23, 1456–1468. 10.1038/s41593-020-0685-8. [PubMed: 32839617]
- Zadrozny B (2002). Reducing multiclass to binary by coupling probability estimates. In *Advances in Neural Information Processing Systems 14*, Dietterich TG, Becker S, and Ghahramani Z, eds. (MIT Press), pp. 1041–1048.
- Zadrozny B, and Elkan C (2002). Transforming classifier scores into accurate multiclass probability estimates In *Proceedings of the Eighth ACM SIGKDD International Conference on Knowledge Discovery and Data Mining (Association for Computing Machinery)*, pp. 694–699.
- Zeng H, and Sanes JR (2017). Neuronal cell-type classification: challenges, opportunities and the path forward. *Nat. Rev. Neurosci* 18, 530–546. 10.1038/nrn.2017.85. [PubMed: 28775344]
- Zhang Y, Kim I-J, Sanes JR, and Meister M (2012). The most numerous ganglion cell type of the mouse retina is a selective feature detector. *Proc. Natl. Acad. Sci. USA* 109, E2391–E2398. 10.1073/pnas.1211547109. [PubMed: 22891316]

### Highlights

- Function, morphology, and gene expression jointly specify retinal ganglion cell type
- 42 classified types in mice comprise 89% of the total population
- Online resource at [rgctypes.org](https://rgctypes.org) to explore and download the data





**Figure 1. Functional diversity of mouse RGCs**

Each panel (separated by purple lines) contains three graphs showing the light response of an RGC type to flashed spots of light (200 R\*/rod/s) from darkness. The top left graph (marked “c” in ON alpha panel) is a heatmap of average firing rate over time (x axis) for spots from 30–1,200 μm (y axis). Dashed lines show the time of spot onset and offset. The top right graph (marked “b” in the ON alpha panel) shows the total spike count during flash onset (cyan) and offset (black) for each spot size. The solid lines indicate mean across cells and the shaded regions indicate standard deviation (SD). The bottom graph (marked “a” in the ON alpha panel) shows peristimulus time histogram plots averaging the response of each cell type to 200 μm spots, indicated in upper plots by red dotted lines. Scale bars in the upper left region are shared across all graphs. Separate scale bars for the y axis of the PSTH plots are provided within each boxed group of cells and apply within that box. Abbreviations for cell types: sus, sustained; tr, transient; med, medium; EW, Eyewire



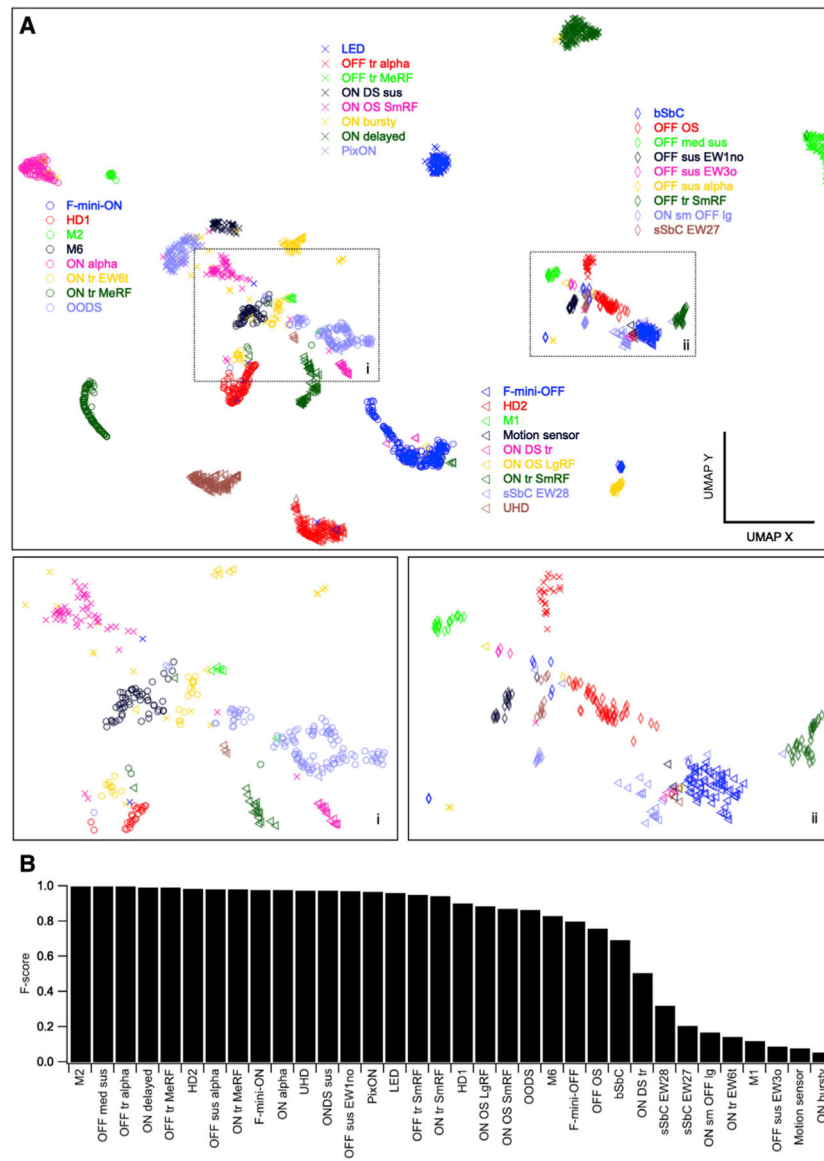
(named based on the Eyewire museum); OS, orientation-selective; h, horizontal; v, vertical; DS, direction-selective; SmRF, small receptive field; MeRF, medium receptive field; LgRF, large receptive field; HD, high definition; UHD, ultrahigh definition; LED, local edge detector; (b,s)SbC, (bursty, sustained) suppressed-by-contrast.

Author Manuscript

Author Manuscript

Author Manuscript

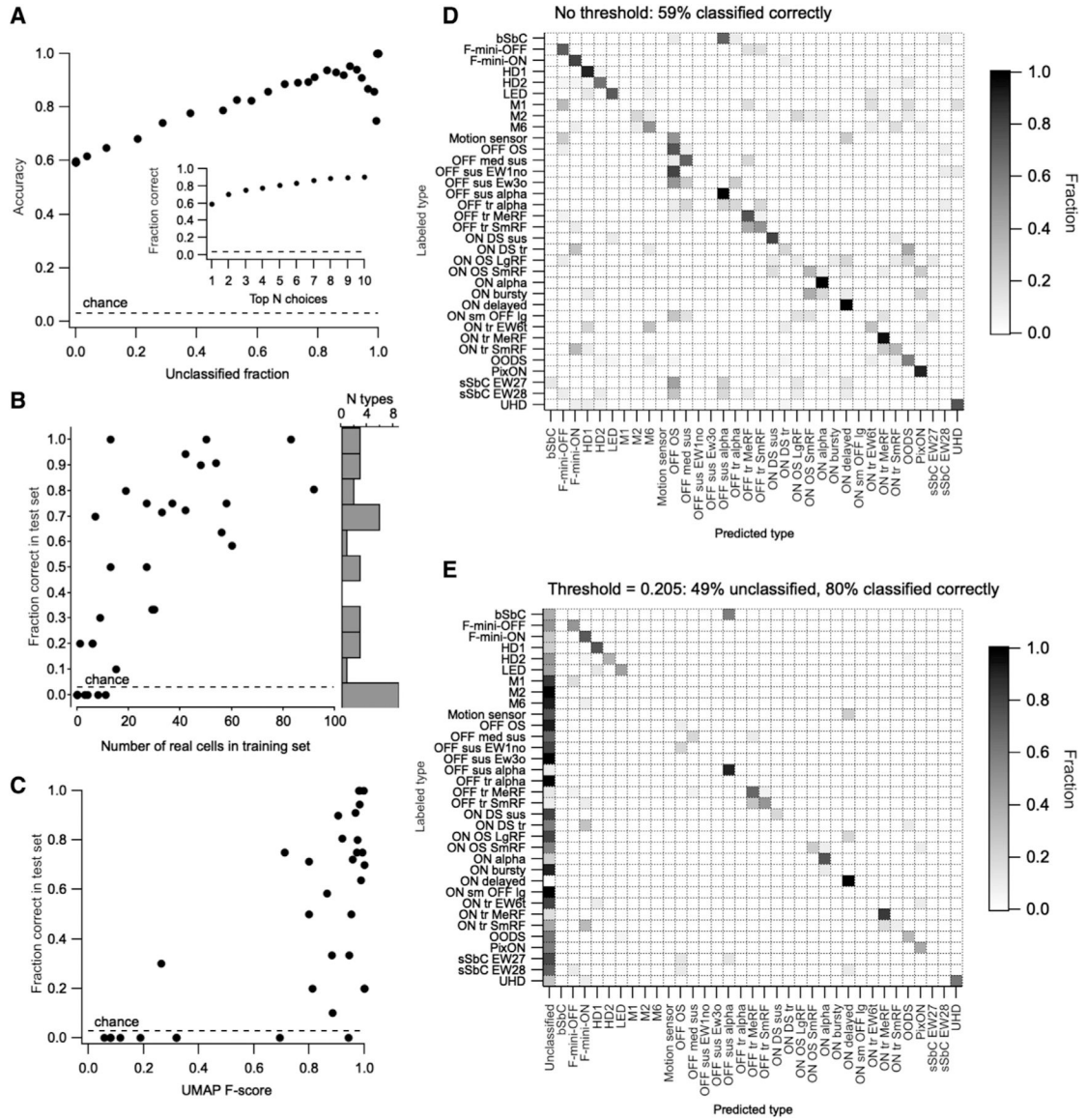
Author Manuscript



**Figure 2. Visualization of functional relationships among RGCs**

(A) UMAP projection of 1,859 RGCs labeled by assigned functional type. Insets show magnified views of boxed regions.

(B) F score for each RGC type, the harmonic mean of the precision (fraction of a given cluster representing a single-labeled type) and recall (fraction of our labeled cells of a given type in a single cluster) of its identification within a single DBSCAN cluster.



**Figure 3. Functional classification from spot responses**

(A) Overall model accuracy (y axis) as a function of the fraction of unclassified cells in the test cells (x axis), which increases with the classification margin. The dashed line represents the expected accuracy of a random classifier. Inset: fraction of instances when the correct choice was present among the top 1–10 probability scores in the classifier output.

(B) Fraction of test cells of each type classified correctly versus the number of cells of that type in the training set. Histogram at the right shows the distribution of classifier accuracy across RGC types.

(C) Accuracy of classification for each RGC type versus its F score from (B).

(D) Confusion matrix (row normalized) for the classifier with no explicit classification margin set. Dotted lines separate RGC groups as in Figure 2.

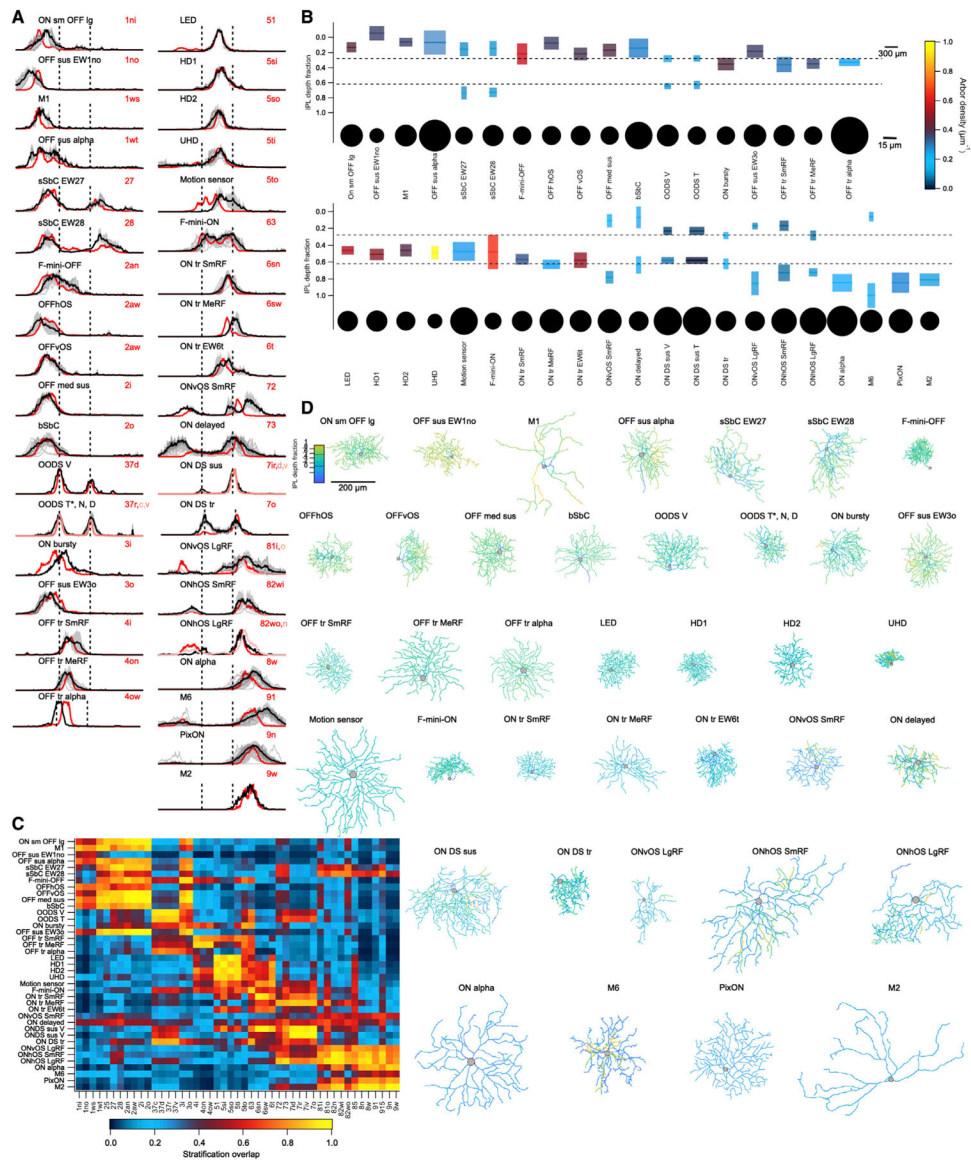
(E) Confusion matrix (row normalized) for the classifier with a classification margin of 0.205. The fraction of unclassified cells of each type is shown in the first column. Remaining entries in the matrix only consider classified cells.

Author Manuscript

Author Manuscript

Author Manuscript

Author Manuscript



**Figure 4. Morphological diversity of mouse RGCs**

(A) Stratification profile of each RGC type along the depth of the IPL from its outer (left) to inner (right) limits. Dashed lines indicate ChAT bands. Profiles include individual cells (thin gray lines), the mean (thick black line), and SD (gray shading), as well as the presumed matching type(s) in the Eyewire museum (shades of red).

(B) Summary plot of the morphology of each RGC type. Colored rectangles depict the mean and full-width-at-half-maximum of each dendritic stratum within the IPL (vertical scale) and the equivalent diameter (according to its diameter) of the stratum in the plane of the IPL (horizontal scale). Soma are colored by arbor density. Somata are drawn as circles relative to their diameter on a separate horizontal scale, as indicated.

(C) Mean overlap between the stratification profile of each measured cell and each template from the Eyewire museum as cosine similarity.

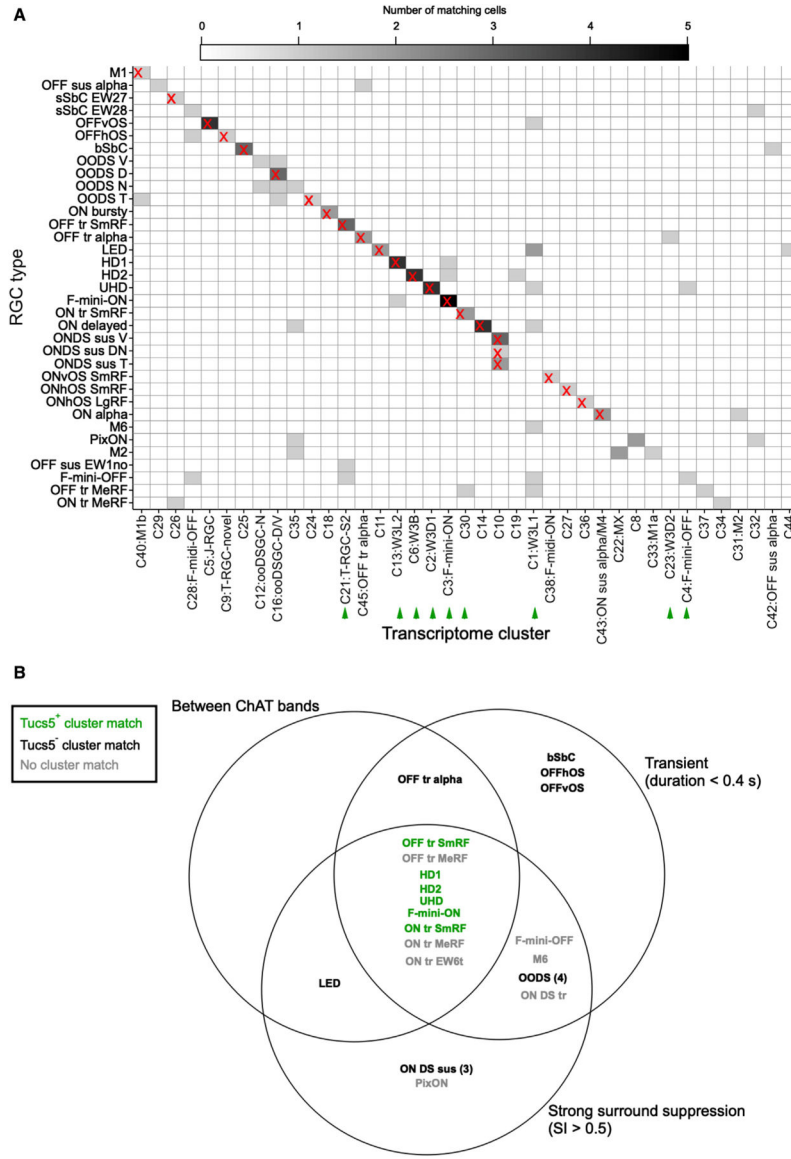
(D) Gallery of en face skeleton example images of each RGC type colored by IPL depth. Full galleries of all skeleton images and those in the Eyewire museum can be found at [rgctypes.org](http://rgctypes.org).

Author Manuscript

Author Manuscript

Author Manuscript

Author Manuscript

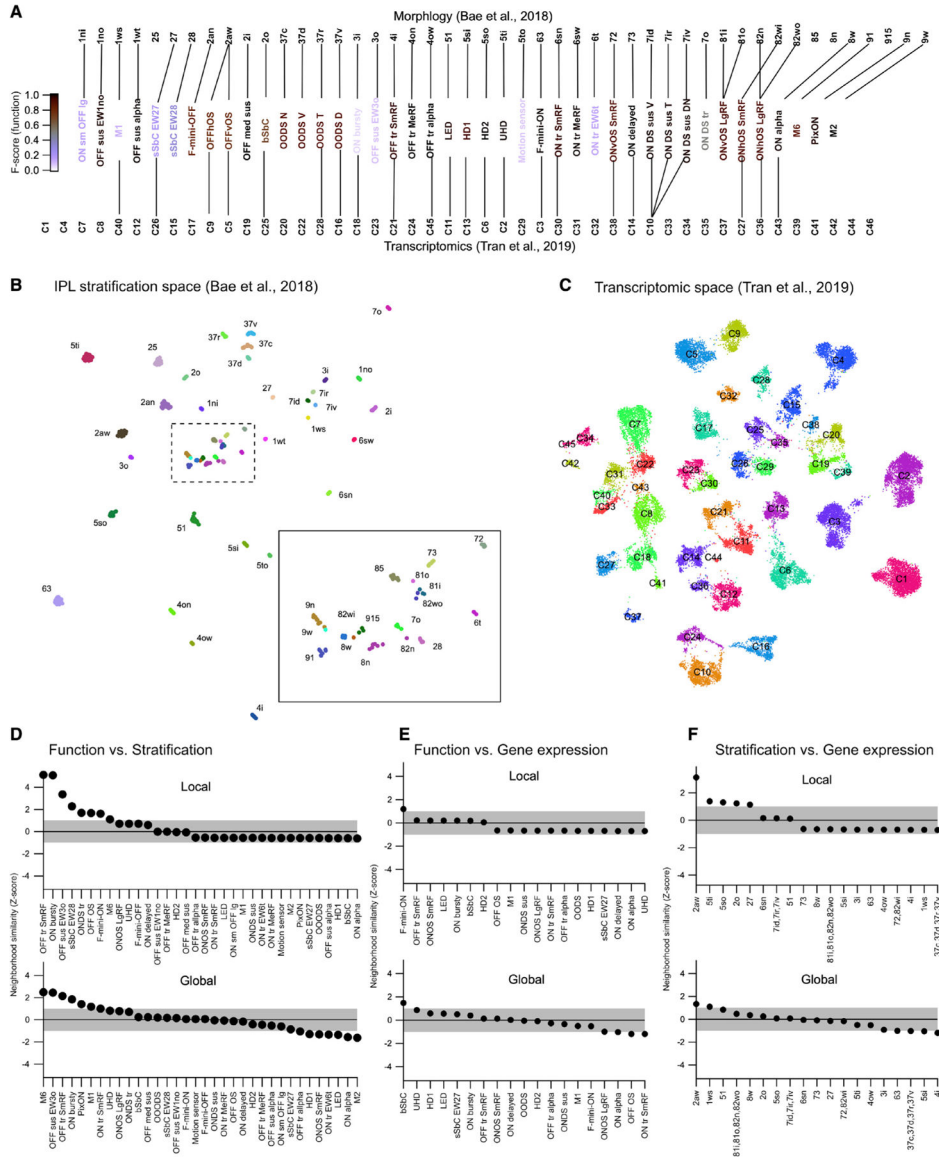


**Figure 5. Matches between functional types and transcriptomic clusters**

(A) Heatmap showing correspondence between functional types (rows) and transcriptomic clusters reported in Tran et al. (2019) (columns). Matches used in subsequent analyses are indicated by an “X.” Color scale indicates the number of patch sequencing cells matched to each cluster. See STAR Methods for matching procedure. Green arrowheads indicate T5 RGCs as described in Tran et al. (2019).

(B) Venn diagram of RGC types, including one morphological characteristic (stratification between the ChAT bands) and two functional characteristics (transience and surround suppression). Green text denotes cell types matched to transcriptomic clusters identified as T5 RGCs, characterized by the specific expression of gene *Tusc5/Trarg1* in Tran et al. (2019).





**Figure 6. Correspondence between RGC relatedness in functional, morphological, and transcriptomic space**  
 (A) UMAP embedding of RGC morphology constructed from the stratification profiles in the Eyewire museum (Bae et al., 2018). Inset shows boxed region at higher magnification.  
 (B) UMAP embedding of RGC gene expression from Tran et al. (2019). Cluster labels removed for clarity.  
 (C) Alignments between the three classification schemes that we used for subsequent analysis. Lines connect putative corresponding RGC types in each classification schema.  
 (D) List of RGC types ranked by the z-normalized fractional overlap between functional and stratification embeddings. Shaded region indicates 1 SD around the expectation from the null distribution. Top: local neighborhood (2–4) neighbors. Bottom: global neighborhood (5–12 neighbors).

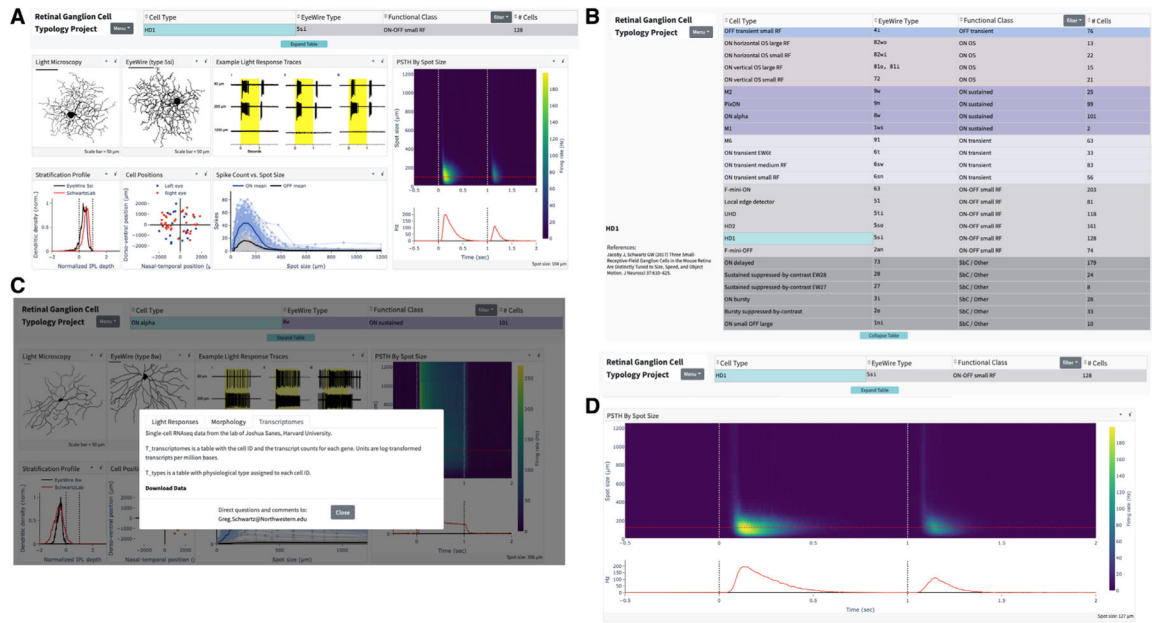
(E and F) Same as (D) but showing alignment between functional and morphological space (E) or morphological and gene expression space (F). Local neighborhood for (E and F) is 2–3 neighbors and global neighborhood is 4–8 neighbors.

Author Manuscript

Author Manuscript

Author Manuscript

Author Manuscript



**Figure 7. Screenshots from [rgctypes.org](http://rgctypes.org).**  
 (A) Landing page for the HD1 RGC.  
 (B) Table of RGC types.  
 (C) Data download area.  
 (D) Expanded, interactive graph of HD1 RGC light responses.

## KEY RESOURCES TABLE

REAGENT or RESOURCE	SOURCE	IDENTIFIER
<b>Antibodies</b>		
Streptavidin-488	Thermo Scientific	S32354
Streptavidin-568	Thermo Scientific	S11226
Goat anti-ChAT	Millipore	AB144P, RRID AB_2079751
Streptavidin-647	Jackson Immuno	016-600-084
Donkey anti-Goat 647	Fisher	A11055
<b>Chemicals, peptides, and recombinant proteins</b>		
Neurobiotin	Vector Laboratories	SP-1150
TCL Buffer	Qiagen	1031576
Recombinant Ribonuclease Inhibitor	Takara Bio	2313A
Advantage® UltraPure PCR Deoxynucleotide Mix (10mM)	Clontech/Takara	639125
KAPA HiFi HotStart PCR ReadyMix	KAPA Biosystems	KK2602
Maxima H-minus RT	Thermo Fischer	EP0752
SPRI SELECT Reagent	Beckman-Coulter	B23318
Trehalose	Life Sciences Technologies	TS1M-100
<b>Critical commercial assays</b>		
Nextera XT DNA Library Preparation Kit (96 samples)	Illumina Inc	FC-131-1096
<b>Deposited data</b>		
Traced RGCs	This paper	Mendeley Data. <a href="https://doi.org/10.17632/8f435gyybb.1">https://doi.org/10.17632/8f435gyybb.1</a>
<b>Experimental models: Organisms/strains</b>		
C57/B16 mice	Jackson Labs	000664, RRID IMSR_JAX:000664
PV-Cre	Jackson Labs	008069
Ai14	Jackson Labs	#007908
Opn4-GFP	Tiffany Schmidt	N/A
TYW3-GFP	Joshua Sanes	N/A
JAMB-eYFP	Joshua Sanes	N/A
<b>Oligonucleotides</b>		
Reverse Transcription DNA oligonucleotide primer (RNase-free, 10 μM)	IDT; Custom made: 5'-AAGCAGTGGTATCAACGCAGAGTACT(30)VN-3'	N/A
SMARTER TSO (with LNA, 10 μM)	Exiqon; Custom made: AAGCAGTGGTATCAACGCAGAGTACATrGrG+G	N/A
PCR oligonucleotide primer (10 μM)	IDT; Custom made: 5'-AAGCAGTGGTATCAACGCAGAGT-3'	N/A
<b>Software and algorithms</b>		
MATLAB	Mathworks	R2021A
ImageJ/FIJI	NIH	Version: 1.53

REAGENT or RESOURCE	SOURCE	IDENTIFIER
Symphony Data Acquisition System	Mark Cafaro	Version: 2
Symphony Analysis and other custom analysis scripts	MATLAB	<a href="https://doi.org/10.5281/zenodo.6423526">https://doi.org/10.5281/zenodo.6423526</a>
DataJoint physiology analysis code	MATLAB	<a href="https://doi.org/10.5281/zenodo.6544673">https://doi.org/10.5281/zenodo.6544673</a>
RGC Classifier	This paper	<a href="https://doi.org/10.5281/zenodo.6578626">https://doi.org/10.5281/zenodo.6578626</a>
RGC Morphology Analyzer	This paper	<a href="https://doi.org/10.5281/zenodo.6578530">https://doi.org/10.5281/zenodo.6578530</a>
UMAP	McInnes et al., 2018 (algorithm); <a href="https://www.mathworks.com/matlabcentral/fileexchange/71902">https://www.mathworks.com/matlabcentral/fileexchange/71902</a> (MATLAB implementation)	Version: 3.01
Igor Pro	Wavemetrics	Version: 8.04
R 3.6.2	<a href="http://www.r-project.org/">http://www.r-project.org/</a>	The R foundation
RStudio –2021.09.0	<a href="http://www.rstudio.com">http://www.rstudio.com</a>	RStudio
Bowtie v2.4.4	<a href="http://bowtie-bio.sourceforge.net/bowtie2/index.shtml">http://bowtie-bio.sourceforge.net/bowtie2/index.shtml</a>	Bowtie2
RSEM v1.3.2	<a href="https://github.com/deweylab/RSEM">https://github.com/deweylab/RSEM</a>	RSEM

Table.

Hyperparameters for the automated RGC classifier

Parameter	Algorithm level	Optimized value	Optimization range
Number of features	elastic net	54	5 to 100
Number of folds	elastic net	6	2 to 10
Alpha	elastic net	.326	0.0 to 1.0
Number of lambda values	elastic net	6	5 to 50
Number of repetitions	decision node	5	5 to 20
Minimum size	decision node	13	5 to 100
Maximum depth	decision tree	6	2 to 8
Minimum tree count	adaboost forest	76	20 to 100
Maximum tree count	adaboost forest	95	25 to 100
Stopping criterion	adaboost forest	1.44% improvement over last 44 trees	1% to 50% improvement over last 10 to 50 trees
Ensemble size	ECOC	96	32 to 100
Probability of ensemble membership	ECOC	22.2% in positive class, 38.2% in negative class, 60.4% null	10% to 90% in positive/negative class