

# UC Riverside

## UC Riverside Previously Published Works

### Title

Cross-serotypically conserved epitope recommendations for a universal T cell-based dengue vaccine

### Permalink

<https://escholarship.org/uc/item/8w07k8kv>

### Journal

PLOS Neglected Tropical Diseases, 14(9)

### ISSN

1935-2727

### Authors

Ahmed, Syed Faraz  
Quadeer, Ahmed A  
Barton, John P  
[et al.](#)

### Publication Date

2020

### DOI

10.1371/journal.pntd.0008676

Peer reviewed

## RESEARCH ARTICLE

# Cross-serotypically conserved epitope recommendations for a universal T cell-based dengue vaccine

Syed Faraz Ahmed<sup>1</sup>, Ahmed A. Quadeer<sup>1\*</sup>, John P. Barton<sup>2\*</sup>, Matthew R. McKay<sup>1,3\*</sup>

**1** Department of Electronic and Computer Engineering, The Hong Kong University of Science and Technology, Hong Kong, China, **2** Department of Physics and Astronomy, University of California, Riverside, California, United States of America, **3** Department of Chemical and Biological Engineering, The Hong Kong University of Science and Technology, Hong Kong, China

\* [eeaaquadeer@ust.hk](mailto:eeaaquadeer@ust.hk) (AAQ); [john.barton@ucr.edu](mailto:john.barton@ucr.edu) (JPB); [m.mckay@ust.hk](mailto:m.mckay@ust.hk) (MRM)



## OPEN ACCESS

**Citation:** Ahmed SF, Quadeer AA, Barton JP, McKay MR (2020) Cross-serotypically conserved epitope recommendations for a universal T cell-based dengue vaccine. *PLoS Negl Trop Dis* 14(9): e0008676. <https://doi.org/10.1371/journal.pntd.0008676>

**Editor:** Daniela Weiskopf, La Jolla Institute for Allergy and Immunology, UNITED STATES

**Received:** December 5, 2019

**Accepted:** August 4, 2020

**Published:** September 21, 2020

**Peer Review History:** PLOS recognizes the benefits of transparency in the peer review process; therefore, we enable the publication of all of the content of peer review and author responses alongside final, published articles. The editorial history of this article is available here: <https://doi.org/10.1371/journal.pntd.0008676>

**Copyright:** © 2020 Ahmed et al. This is an open access article distributed under the terms of the [Creative Commons Attribution License](https://creativecommons.org/licenses/by/4.0/), which permits unrestricted use, distribution, and reproduction in any medium, provided the original author and source are credited.

**Data Availability Statement:** All sequence data files are available from the ViPR database. Unique identifiers of all protein sequences as well as all epitope sequences are listed in the Supporting

## Abstract

Dengue virus (DENV)-associated disease is a growing threat to public health across the globe. Co-circulating as four different serotypes, DENV poses a unique challenge for vaccine design as immunity to one serotype predisposes a person to severe and potentially lethal disease upon infection from other serotypes. Recent experimental studies suggest that an effective vaccine against DENV should elicit a strong T cell response against all serotypes, which could be achieved by directing T cell responses toward cross-serotypically conserved epitopes while avoiding serotype-specific ones. Here, we used experimentally-determined DENV T cell epitopes and patient-derived DENV sequences to assess the cross-serotypic variability of the epitopes. We reveal a distinct near-binary pattern of epitope conservation across serotypes for a large number of DENV epitopes. Based on the conservation profile, we identify a set of 55 epitopes that are highly conserved in at least 3 serotypes. Most of the highly conserved epitopes lie in functionally important regions of DENV non-structural proteins. By considering the global distribution of human leukocyte antigen (HLA) alleles associated with these DENV epitopes, we identify a potentially robust subset of HLA class I and class II restricted epitopes that can serve as targets for a universal T cell-based vaccine against DENV while covering ~99% of the global population.

## Author summary

The rise in global incidence of DENV and the resulting rise in mortality rate necessitates an effective universal vaccine against it. Since infection from one DENV serotype makes a person vulnerable to severe disease upon infection from another serotype, an effective vaccine should protect against all DENV serotypes. Increasing experimental evidence suggests that T cells are important for protecting against DENV. In this work, we comprehensively analyzed the extensive publicly-available data on DENV and revealed a distinct pattern of epitope conservation for several of the DENV T cell epitopes. Importantly, we identified a set of epitopes that are highly conserved across at least three DENV

Information tables. All source code and scripts for reproducing the results are available at <https://github.com/faraz107/Robust-DENV-Vaccine-Candidates>.

**Funding:** This work was supported by the General Research Fund of the Hong Kong Research Grants Council (RGC) (grant numbers 16204519 and 16201620). SFA was also supported by the Hong Kong Ph.D. Fellowship Scheme (HKPFS) (number PF15-10255). The funders had no role in study design, data collection and analysis, decision to publish, or preparation of the manuscript.

**Competing interests:** The authors have declared that no competing interests exist.

serotypes. Incorporating information about the HLA alleles associated with these epitopes, we identified a potentially robust set of epitopes as targets for a prospective universal T cell-based vaccine that maximizes global population coverage. By training the immune system to target specific regions of DENV proteins which are likely to protect against multiple serotypes, a T cell-based vaccine might be effective in circumventing progression to severe dengue infection.

## Introduction

Dengue is a mosquito-borne viral infection that mostly causes febrile illness, but in some cases progresses into a life-threatening disease [1]. It is caused by the dengue virus (DENV) which exists as four genetically and antigenically distinct serotypes [2,3]. Global incidence of dengue has increased more than 6-fold over the last two decades [4] with an estimated 400 million new infections occurring annually [5]. Dengue is now endemic in at least 100 countries with multiple DENV serotypes co-circulating in various parts of the world [6] and it is estimated that 3.9 billion people are at risk of being infected by DENV [7]. Despite several efforts, there is currently no safe and effective vaccine that protects against dengue [8]. The only licensed dengue vaccine, Dengvaxia, does not completely protect against all DENV serotypes and, more importantly, increases the risk of severe disease among young children who are already most vulnerable to DENV infections [9,10].

One of the main hindrances in the development of an effective DENV vaccine is its complicated pathogenesis: primary DENV infections are mostly asymptomatic but secondary infection with a different serotype (i.e., heterologous infection) can cause clinical complications and lead to severe forms of disease [3]. Severe dengue has been associated with immunopathology where an aberrant immune response exacerbates the disease outcome [11]. Although both arms of the adaptive immune response—antibodies and T cells—have been investigated, the sub-neutralizing antibodies seem to play a major role in progression to severe dengue during secondary infection via a phenomenon known as antibody-dependent enhancement (ADE) of disease [12,13]. In contrast, there is no explicit evidence for the role of T cells in progression to severe dengue as of yet [14,15]. In fact, increasing evidence suggests a protective role of T cells against DENV infection [13–18]. Moreover, ADE as well as the lack of a DENV-specific T cell response following Dengvaxia vaccination have been suggested to be the main factors leading to an increased risk of severe dengue among vaccine recipients [10]. These recent developments suggest the potential importance of a vaccine designed to induce protective T cell responses.

Most of the vaccines against DENV that are currently in advanced stages of development are based on live-attenuated viruses (LAVs) comprising variant chimeric forms of DENV serotypes [19–22]. These vaccines are expected to induce strong T cell responses against the vaccine-strain-specific immunodominant epitopes, but may not be protective against multiple DENV serotypes [23–26]. The immunodominance hierarchy of DENV T cell epitopes is complex and has been shown to depend upon the serotypes of current and past infecting strains. That is, for primary and subsequent homologous infections, T cell responses are dominant towards serotype-specific epitopes, while for secondary heterologous infections the responses skew towards epitopes that are conserved across multiple DENV serotypes [27–29]. This expansion of T cell responses towards conserved epitopes following heterologous secondary infection is thought to play a protective role, resulting in a low incidence rate of symptomatic tertiary infections [28,30]. Notably, cross-reactive CD8+ T cells that target conserved epitopes

in multiple DENV serotypes have been shown to mediate protection in heterologous secondary infections [14,15,31,32]. Experiments using mice have shown that cross-reactive CD8+ T cells provide protection from DENV even in the presence of disease-enhancing antibodies [33,34]. These recent findings strongly suggest that a vaccine eliciting a T cell response specifically targeting epitopes conserved across serotypes is likely to enable protection against DENV, as highlighted in a recent review [13].

Thus far, only a few studies have attempted to identify protein regions (peptides) conserved across multiple DENV serotypes that may be targeted by T cell-based vaccines [18,35–37]. Specifically, in one such study [35], conservation of overlapping peptides across sequence data of multiple serotypes was used to identify 44 pan-DENV conserved peptides of varying lengths (9 to 22 residues). In another study [36], a block entropy based method was employed to identify 1,551 pan-DENV conserved blocks of 9-mer peptides from sequence data available at the time of study. The selection of conserved peptides in this study was not strict as it allowed for variants (i.e., peptides that differ from each other at few residues either within a single serotype or across serotypes). Similar to [36], studies [37] and [18] allowed for variants and reported 46 and 11 conserved epitopes, respectively. Although all these studies [18,35–37] reported multiple conserved regions/epitopes within the DENV proteome, they did not consider other factors that are important for the design of a cross-serotypic dengue vaccine. First, the conserved peptides/blocks predicted exclusively from DENV sequences (as in [35,36]) may not represent T cell epitopes that are actually presented on HLA molecules of DENV-infected cells. Second, training the immune system using variants of peptides/epitopes [18,36,37], especially those which are serotype-specific, may result in sub-optimal T cell responses in subsequent heterotypic infections [27]. These issues may be addressed respectively by exclusively using data on experimentally-determined DENV T cell epitopes (a large number of which have been determined over the past few years), and by selecting conserved epitopes based on a strict criterion that discounts variants. Thus, using the available immunological data, together with a strict approach to determine epitope conservation (i.e., which considers each variant as a separate epitope) based on the publicly-available patient-derived DENV sequence data, could enable the identification of cross-serotypically conserved T cell epitopes that can aid the rational design of a potentially effective universal vaccine against dengue.

Here, we take an epitope-centric approach by focusing on all available data of experimentally-determined DENV T cell epitopes that are derived from human hosts and carry associated HLA information. This makes our approach distinct from previous related works as the T cell epitopes that we consider are not only known to be processed and presented by the infected cells, but they also elicit positive/protective T cell responses within humans in the context of cognate HLA alleles. By examining the conservation of each available T cell epitope in the protein sequence data for each DENV serotype, our analysis reveals a striking near-binary pattern of conservation across serotypes for multiple epitopes. That is, epitopes are often highly conserved in particular serotypes and nearly absent from the remaining ones. We employ a conservative approach for mapping the epitopes onto sequences, which excludes non-conserved epitope variants from the analysis. This is important as mutation of even a single epitope residue is known to potentially abrogate HLA-epitope binding and significantly weaken the T cell response [38–40]. Based on the determined conservation profile of the epitopes, we identify a set of 55 epitopes that are strictly conserved in at least three of the four DENV serotypes. The majority of these epitopes are derived from functionally important regions of DENV non-structural proteins (NS3 and NS5), highlighting their potential as effective vaccine targets. Incorporating the HLA information associated with the identified cross-serotypically conserved epitopes, we propose a set of robust epitopes as targets for a prospective T cell-based universal vaccine against DENV that can potentially protect a large

percentage of the global population. Moreover, to demonstrate the further applicability of our approach, we also propose country-specific vaccine targets for three dengue-endemic countries (Thailand, Brazil and Philippines), that are experiencing a significant recent rise in number of DENV infections [41].

## Materials and methods

### Data acquisition and processing

We downloaded all available DENV protein sequences derived from human hosts from the NIAID Virus Pathogen Resource (ViPR) database [42] (<https://www.viprbrc.org/>; accessed July 30, 2019). The downloaded sequences were aligned separately for each DENV protein (E, prM, C, NS1, NS2a, NS2b, NS3, NS4a, NS4b, and NS5) and each serotype (DENV1-4) using the MAFFT multiple sequence alignment program [43]. Sequences that had less than 15% gaps within the alignment were retained for further analysis, which resulted in a total of 56,496 protein sequences (Fig 1) (see S1 Table for accession numbers of all protein sequences). Most of these sequences are from DENV1 and DENV2. The fewest are from DENV4, for which reporting of sequences has increased the least rapidly over the past several years [6]. Among DENV proteins, a large number of envelope protein (E) sequences are reported as compared to other proteins. This is expected, with envelope being a major focus of dengue research as it is the main target of antibodies.

We also downloaded data of all available DENV T cell epitopes from the NIAID ViPR database [42] (<https://www.viprbrc.org/>; accessed November 15, 2019) that were derived from human hosts. This data comprises both HLA class I and class II restricted epitopes, including those associated with the recently characterized class II loci (HLA-DP, DQ, and DRB3/4/5) [44]. These were grouped according to protein by separately filtering the epitope data for each protein. For this, the starting and ending protein positions were defined based on the following reference sequences: NP\_059433.1 (DENV1), NP\_056776.2 (DENV2), YP\_001621843.1 (DENV3) and NP\_073286.1 (DENV4). Of all the obtained epitopes, we retained only those that were reported to be positive in at least one T cell assay, and for which HLA information was available. This procedure resulted in a total of 1,768 (674 HLA class I and 1,094 HLA class II restricted) DENV T cell epitopes (Fig 2A and S2 Table).

### Computing conservation of epitopes

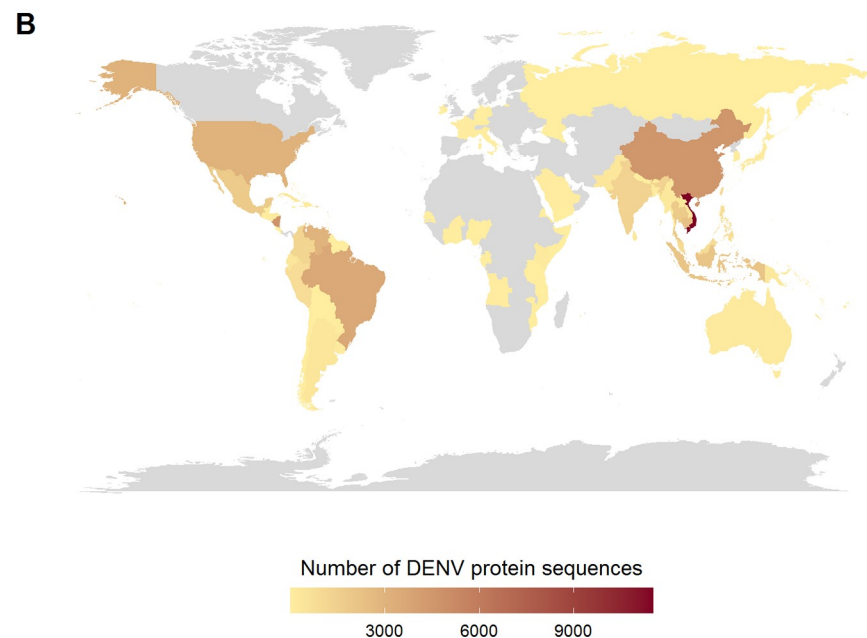
We measured the conservation of each epitope for each serotype as the fraction of protein sequences within that serotype that comprised the exact “epitope sequence”. That is, to compute the conservation of an epitope, we used an exact mapping procedure (Fig 2B) that screened each epitope against all protein sequences within each serotype and mapped the epitope onto a particular sequence only when it matched identically to the corresponding region of that sequence. The fraction of sequences to which the epitope was mapped represented its conservation in the respective serotype. This strict approach ensured that (variant) epitopes differing from each other at one or more residues were considered separately.

### Computing epitope coverage of DENV proteome

We defined the epitope coverage at any position of a protein as the number of epitopes that covered that position. To compute it, we first mapped all the T cell epitopes onto all sequences of the corresponding proteins for each serotype using the exact mapping procedure explained above (Fig 2B). The epitope coverage of a protein was then computed after accounting for all

**A**

Protein	DENV1	DENV2	DENV3	DENV4	All serotypes
E	6680	4238	2187	1561	14666
prM	2177	1851	1048	360	5436
C	1999	1691	939	286	4915
NS1	1938	1537	918	245	4638
NS2a	1893	1470	907	241	4511
NS2b	1896	1462	907	245	4510
NS3	1876	1467	922	238	4503
NS4a	1871	1457	910	231	4469
NS4b	1872	1442	909	229	4452
NS5	1852	1420	895	229	4396
Total	24054	18035	10542	3865	56496



**Fig 1. Analyzed DENV sequences span the DENV genome and come from multiple geographic locations.** (A) Number of DENV protein sequences for each of the four serotypes of DENV retrieved from the ViPR database [42]. (B) Locations where DENV protein sequences used in this study were sampled. Countries from where no sequence was available for analysis are colored as grey. The map was generated using the “maps” package (<https://cran.r-project.org/web/packages/maps/index.html>) through the R programming language.

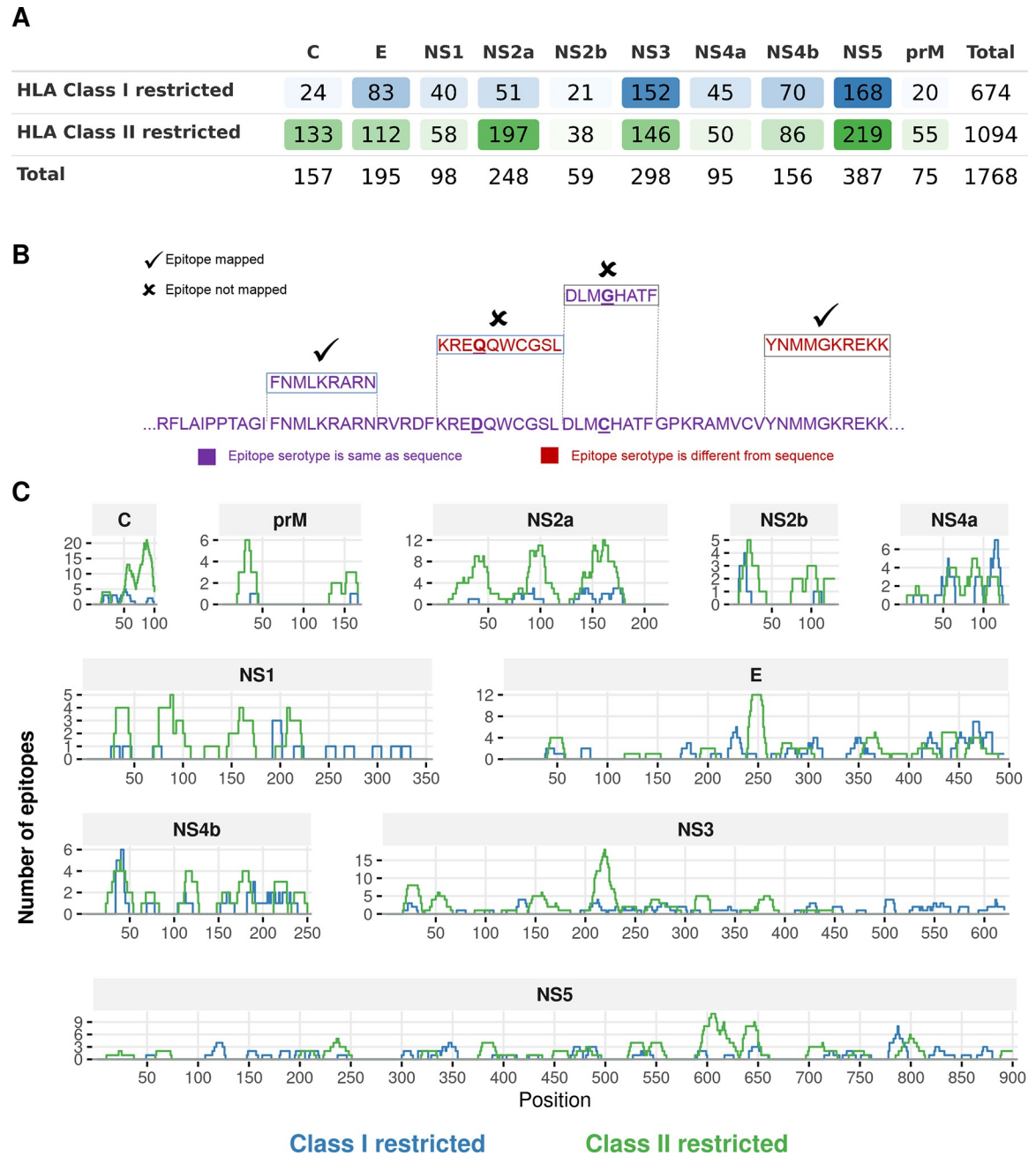
<https://doi.org/10.1371/journal.pntd.0008676.g001>

epitopes that mapped onto at least one sequence of that protein. We found the coverage of DENV proteins to be qualitatively similar across all serotypes (Fig 2C, S1 Fig).

### Estimating population coverage of epitopes

Population coverage is an estimate of the percentage of individuals in a target population that are likely to be able to mount a T cell response against a given epitope. We computed the population coverage of a T cell epitope based on the associated HLA alleles in the ViPR database that were reported together with the positive T cell assay data. We only considered alleles with





**Fig 2. Statistics and coverage of experimentally-determined DENV T cell epitopes.** (A) Number of DENV epitopes derived from different proteins across the serotypes, from the ViPR database [42]. (B) Procedure for the exact mapping of an epitope to a protein sequence. Epitopes were mapped onto the sequence only when all epitope residues exactly matched with the protein residues, i.e. no residue mismatches were allowed. (C) Coverage of T cell epitopes across DENV proteins. The locations of epitopes were determined by mapping them onto all DENV1 sequences. Similar patterns of epitope coverage were observed for most proteins when the epitopes were mapped onto sequences of DENV2/3/4 (see S1 Fig).

<https://doi.org/10.1371/journal.pntd.0008676.g002>

at least 4-digit resolution (e.g., A\*02:01). The (accumulated) population coverage of a set of epitopes is defined as the percentage of individuals in a target population that are likely to be able to respond to at least one T cell epitope within the set. We adopted a greedy approach to identify the set of epitopes from among the highly conserved ones which maximized the

accumulated population coverage. The steps of the approach were as follows: (i) we initialized the set with the epitope that had the highest individual population coverage; (ii) added to the set another epitope which maximized the accumulated population coverage; and (iii) continued adding epitopes until we obtained a set of epitopes for which the accumulated population coverage did not increase further by adding any of the remaining highly conserved epitopes. If at any step the same increase in accumulated population coverage resulted from adding multiple epitopes, then only the most conserved epitope among them was added to the set.

The Python code of the tool for computing the population coverage was downloaded from the IEDB Analysis Resource [45] (<http://tools.iedb.org/population/download/>; accessed August 1, 2019) and run locally. This tool uses the population-specific HLA allele genotypic frequencies from the Allele Frequency database [46] (<http://www.allelefrequencies.net/>).

## Results

### Mapping T cell epitopes onto the DENV proteome reveals their broad and non-uniform coverage

We first mapped the downloaded experimentally-determined HLA class I and II restricted T cell epitopes (summarized in Fig 2A) onto the protein sequences for each DENV serotype by using an exact mapping criterion; i.e., no mismatch was allowed between the epitope sequence and the corresponding region of the protein sequence (Fig 2B). We then determined the coverage of the mapped epitopes in each DENV serotype (see Methods for details). We found that for most DENV proteins the epitope coverage was broad, with at least 70% of C, NS2a, NS3, NS4a and NS4b residues being covered by at least one T cell epitope (Fig 2C, S1 Fig). Among the remaining proteins, coverage of E, NS1, NS2b and NS5 was moderate (40–70%), while prM was the least covered (less than 40%). This suggests that all DENV proteins are targeted by natural T cell responses, and that a large part of the DENV proteome is potentially immunogenic.

The mapping of epitopes onto the DENV proteome further revealed that the epitope coverage is distributed non-uniformly across different proteomic regions (Fig 2C, S1 Fig). Interestingly, specific “immunologically dense” regions, defined as regions covered by multiple epitopes, were observed in some proteins, including C (residues 50–100), NS2a (residues 150–180) and NS3 (residues 200–250). Moreover, most of the protein regions were covered by both HLA class I and II restricted epitopes, while some were covered by only one type of epitope. For example, both HLA class I and class II restricted epitopes covered most regions of NS2a, NS4b and NS5 proteins, while most of the C-terminal region of NS3 was covered only by HLA class I restricted epitopes and that of the C protein was covered only by HLA class II restricted epitopes. Epitope coverage is important to understand the proteomic regions accessible to T cells. It is also important, however, to examine their conservation across DENV serotypes in order to identify specific cross-serotypically conserved epitopes that may serve as potentially effective targets for T cells.

### Conservation profiles of epitopes reveal a near-binary pattern across serotypes

In order to compute the conservation profiles of the T cell epitopes, we first mapped them onto all available protein sequences for each serotype (Methods). Similar to above, we used an exact mapping criterion such that no mismatch was allowed between the epitope and any protein sequence (Fig 2B). This conservative mapping precluded one- or multiple-residue variants of an epitope from spuriously inflating its conservation profile. This is important from the



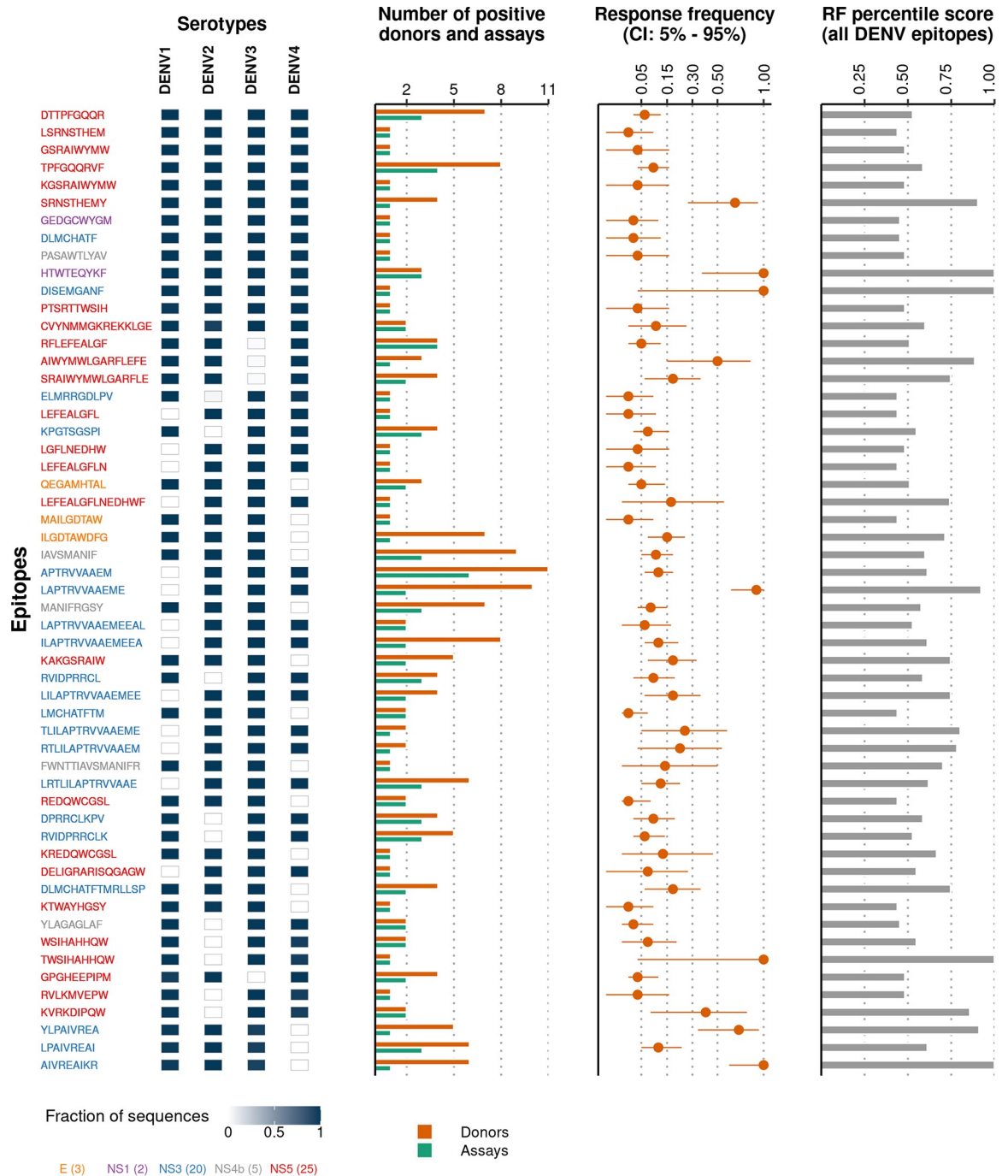
perspective of identifying vaccine targets since single residue substitutions have been demonstrated to influence epitope presentation, weaken or completely abrogate epitope-HLA molecule binding, and result in insufficient T cell responses [38–40]. Furthermore, it is particularly important to avoid training the immune system against epitope variants in the case of DENV, as targeting these can lead to weakened T cell responses (i.e., T cell responses to the variant epitopes may be weakly cross-reactive), and such effects have been implicated in offering a lack of protection and progression to severe disease [31,47,48].

Following the exact mapping of epitopes, we found 13 highly conserved epitopes, representing less than 1% of all available DENV epitopes across all four DENV serotypes. All of these epitopes were derived from non-structural proteins, with the majority (8 out of 13) from NS5 (Fig 3). The conservation profiles of the remaining epitopes revealed a distinct pattern: a large number of epitopes were highly conserved in 3 serotypes and nearly absent (almost zero conservation) in the fourth serotype. This unique near-binary pattern apparently resulted from the presence of serotype-specific residues within these epitopes. For example, the NS5 epitope LEFEALGFL was highly conserved (>99%) within each of DENV2, DENV3 and DENV4 but absent in DENV1 where, in the last epitope position, Leucine (L) was substituted by Methionine (M). Similarly, the envelope epitope QEGAMHTAL was highly conserved in DENV1, DENV2 and DENV3 but not in DENV4 where the variant QEGAMHSAL was highly conserved (S2 Fig). This distinct pattern of epitope conservation extended beyond the top epitopes and several other epitopes were found to be highly conserved within only two or one DENV serotype while being absent from the remaining serotypes (S3 Fig).

To identify robust T cell targets against multiple DENV serotypes, we excluded epitopes that are highly conserved in only one or two serotypes (~42% and ~6% of all DENV epitopes respectively), and instead focused only on epitopes that are expected to be protective against a majority of serotypes. Based on the conservation profile, we identified a set of 55 DENV epitopes that had a minimum conservation level above a high threshold (0.9) within at least 3 of the 4 serotypes (Fig 3). This set of epitopes was found to be robust to the specific choice of threshold used for defining the minimum conservation level (S4 Fig).

While the identification of epitopes that are conserved across multiple serotypes is critical to select targets for a prospective vaccine, examining the immunodominance of these epitopes across multiple individuals is also important. Measuring the immunodominance of epitopes, in general, is complicated and varies across studies [48,49]. Here, we used two approaches to quantitatively compare the immunodominance of epitopes. First, we extracted from IEDB the information about the number of positive assays and donors reported for each of the top 55 conserved epitopes (Fig 3). Half of these epitopes (28/55) were reported positive in multiple assays while nearly two-thirds (35/55) were reported positive in multiple donors, suggesting that these can be considered as immunodominant epitopes [48]. Second, we compared the response frequencies reported for each of these epitopes in the IEDB database (Fig 3). The median of the response frequencies for these epitopes was 0.09. Comparing this against the distribution of the reported response frequencies for all DENV T cell epitopes in IEDB, we found that all 55 identified epitopes scored above ~43% of all DENV T cell epitopes (Fig 3). In addition, many of our identified epitopes were reported to have very strong affinities with cognate HLA molecules (S8 Fig and S2 File); a factor considered important for eliciting a strong T cell response [14]. Moreover, we found that several of our identified epitopes were listed as being immunodominant in multiple previous studies [26,31,48] (S3 Table).

So far, we have focused only on epitopes determined from human hosts. However, we can also use our framework to analyze all the (213) experimentally-determined T cell epitopes from HLA transgenic mice reported in the ViPR database [42] (S3 File). Using our strict criteria, we found only 9 epitopes from HLA transgenic mice to be conserved (conservation greater



**Fig 3. Top cross-serotypically conserved DENV T cell epitopes exhibit near-binary conservation.** Of the 1,768 experimentally-determined epitopes, 55 mapped exactly onto at least 90% of sequences in at least 3 of the 4 DENV serotypes. The cells adjacent to each epitope represent its conservation within each DENV serotype. The number of donors and assays that have tested positive and the response frequency (RF) as reported in IEDB [45] are shown for each epitope. RF percentile score shows the response frequencies of each epitope compared to those reported for all DENV epitopes in IEDB [45] (S2 File). Epitopes are arranged according to their mean conservation (in descending order) and colored according to the protein from which they were derived. The number of epitopes within the set derived from each protein is shown within parentheses in the legend. For the conservation profile of all available (1,768) T cell epitopes, see S3 Fig.

<https://doi.org/10.1371/journal.pntd.0008676.g003>

than 0.9) in at least 3 serotypes (S9 Fig). Five of these epitopes (namely, APTRVVAEM, ELMRRGDLPV, RVIDPRRCL, SRAIWYMWLGARFLE, and LPAIVREAI) were also reported from human hosts and are thus present in our top 55 conserved epitopes (Fig 3).

To complement these results, we developed a software tool that filters all available DENV epitopes based on any choice of threshold for the minimum conservation level of epitopes within each serotype. This easy-to-use tool presents the conservation profiles of all 1,768 experimentally-determined DENV T cell epitopes considered in the present work (see [Methods](#)) and is provided as a standalone HTML file (S1 File) which can also help to quickly identify the most conserved epitopes from any DENV protein. Thus, this tool may serve as a useful reference for future research on DENV epitopes.

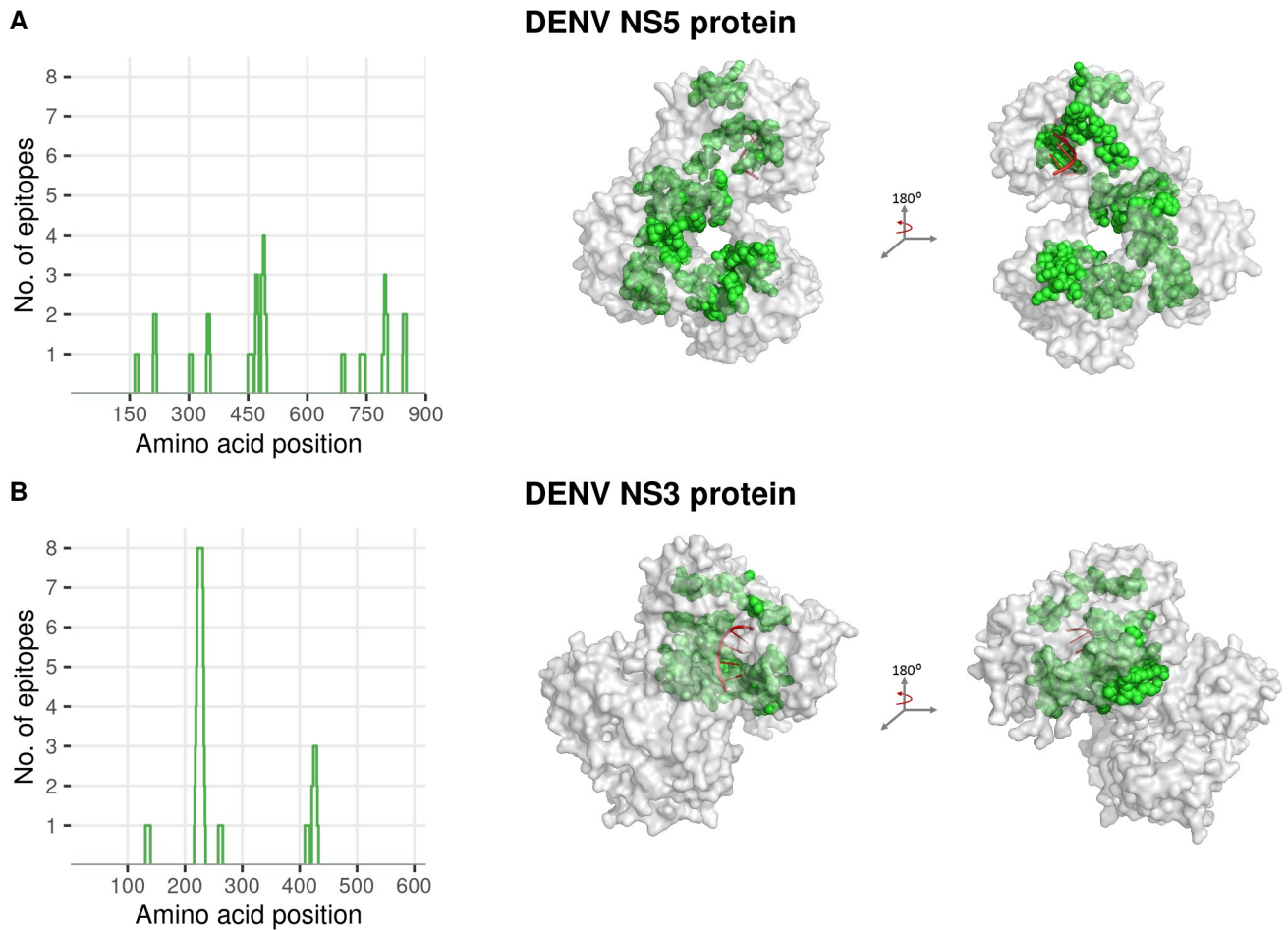
### Top conserved DENV T cell epitopes in NS3 and NS5 are located in functionally important regions

Most of the identified conserved epitopes (45 out of 55) were derived from NS5 and NS3 (25 and 20, respectively) (Fig 3), highlighting the potential biological importance of targeting these non-structural proteins. Both NS5 and NS3 are large DENV proteins, comprising about 900 and 618 residues respectively (lengths slightly vary across serotypes), which are multifunctional enzymes playing a critical role in viral replication [50–52]. The high conservation of the identified NS5 and NS3 epitopes across serotypes (Fig 3) indicates that the protein regions associated with them may be structurally/functionally important for DENV. To investigate this, we mapped these epitopes to the available protein crystal structures of these proteins. These top conserved epitopes were found to lie deep within the protein tertiary structures and generally in the proximity of functionally important regions such as RNA binding sites and known flavivirus motifs.

Among the top conserved NS5 epitopes, two of them (SRNSTHEMY and LSRNSTHEM) contained an active site (E216) of the enzymatic tetrad of methyltransferase (MTase) domain known to be critical for viral replication [53]. Four of the top conserved NS5 epitopes (DTTPFGQQR, TPFQQRVF, KTWAYHGSY and GPGHEEIPM) contained residues that are known to be involved in interactions that provide overall stability to the NS5 quaternary structure [54]. Some residues involved in these epitopes are known to be functionally critical as well [53]; for example, mutations in epitopes DTTPFGQQR (F349D) and SRNSTHEMY (E216A) were shown to severely impair viral replication. Four other epitopes among the top conserved NS5 epitopes (WSIHAHHQW, TWSIHAHHQW, PTSRTTWSIH and CVYNMMGKREKKLGE) were found to overlap with the priming loop, which is important for stabilizing the RNA-dependent RNA-polymerase (RdRp) initiation complex [52]; and motif F, which mediates conformational changes between the thumb and fingers domains of NS5 to provide stability to the RdRp domain [55] (Fig 4A). Furthermore, two of the top conserved epitopes of NS5 (GPGHEEIPM and KVRKDIPQW) contained residues involved at the NS5 inter-dimer interface [53] (S5 Fig).

Among the top conserved NS3 epitopes, one epitope (KPGTSGSPI) comprised an active site (S135) of the catalytic triad, mutations at which have been shown to completely abolish the protease activity [56]. All remaining top conserved NS3 epitopes were found to lie within the conserved flavivirus motifs and map to the helicase domain [57]. Remarkably, while these NS3 epitopes were located far from each other in the primary structure (Fig 4B), they localized in the tertiary structure around the groove that is important for interacting with viral RNA and facilitating its unwinding [50,58].

Overall, this analysis suggested that the identified top conserved epitopes of NS5 and NS3 are derived from functionally/structurally important regions of these proteins. These results



**Fig 4. Mapping of top conserved DENV NS5 and NS3 epitopes onto the protein primary and tertiary structures.** (A) (Left panel) Coverage of the top conserved NS5 epitopes (Fig 3) along the protein sequence, and (right panel) their locations in the corresponding tertiary structure (PDB ID 5DTO). Most of the residues within these epitopes are located in regions that provide stability to the polymerase complex [52]. (B) (Left panel) Coverage of the top conserved NS3 epitopes (Fig 3) along the protein sequence, and (right panel) their locations in the corresponding tertiary structure (PDB ID 5XC6) [50]. Although these epitopes are spread out in the primary structure, they localize near the RNA binding groove of the helicase domain [58]. Right panels show side views of the protein structure, rotated by 180°. Residues that belong to conserved epitopes are shown as green spheres while the RNA, interacting with helicase of NS3 (B) and methyltransferase of NS5 (A), is shown in red.

<https://doi.org/10.1371/journal.pntd.0008676.g004>

provide biological reasoning, complementary to the statistical analysis, to further suggest that training T cells to recognize the identified top conserved epitopes through vaccination may potentially be helpful in eliciting a robust T cell response against DENV.

### Identifying epitopes that can serve as targets for a universal T cell-based dengue vaccine

We sought to identify a robust set of epitopes as targets for a potential universal T cell-based dengue vaccine that would maximize chances of eliciting a T cell response against the conserved regions of DENV in a large percentage of the population. To address this, we used the global prevalence data of the HLA alleles [46] that are associated with the identified top 55 cross-serotypically conserved DENV epitopes (Fig 3).

We first estimated the population coverage of each of the top epitopes and ranked them accordingly. We then sought to determine sets of epitopes that provided maximum global

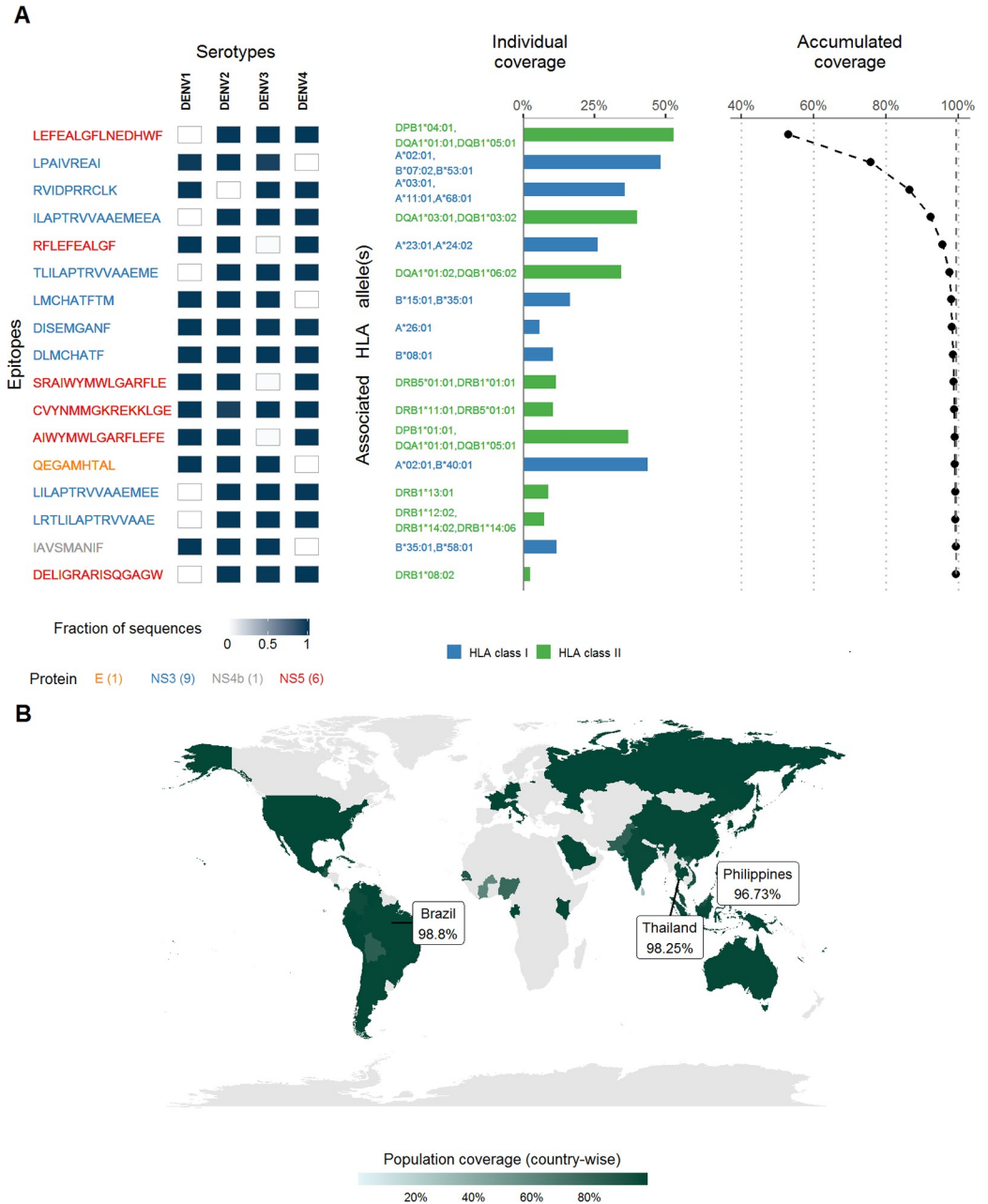
population coverage. We started by considering the epitope (LEFEALGFLNEDHWF) that had the highest individual population coverage (52.92%), and then progressively added epitopes such that the accumulated population coverage was maximized (see [Methods](#) for details). We continued this procedure until we obtained a set of epitopes for which the accumulated population coverage saturated. This procedure identified a set of 17 epitopes, from the top 55 epitopes ([Fig 3](#)), which provided an accumulated global population coverage of 99.23% ([Fig 5A](#)). Three epitopes in this set were highly conserved across all DENV serotypes, while the remaining were highly conserved in three of the four serotypes. Of these, DENV2 is covered by the greatest number of epitopes (16), followed by DENV3 (14), DENV4 (13) and DENV1 (11), respectively.

Based on our analysis we recommend these 17 epitopes (8 HLA class I and 9 HLA class II restricted) as potentially robust targets for a universal T cell-based vaccine against DENV. Interestingly, three epitopes within this set (LEFEALGFLNEDHWF, LPAIVREAI, and RVIDPRRCLK) together provided a global population coverage of greater than 80% due to their known associations with multiple distinct HLA alleles [45]. It is encouraging that the proposed set has a high population coverage within individual populations across multiple DENV-endemic countries spread across South-East Asia, Central and South Americas and the Western Pacific [1,5,7] ([Fig 5B](#)). Importantly, the estimated population coverage of the proposed set of epitopes is high within most countries that have recently experienced a high incidence of dengue [41], such as Thailand (98.25%), Brazil (98.8%) and Philippines (96.73%). To further demonstrate the applicability of our approach, we also proposed separate sets of epitopes as potentially robust targets for vaccines specifically targeting populations within these dengue-endemic countries by identifying the smallest sets of epitopes that achieved the maximum population coverages. These sets comprised 12, 13 and 5 epitopes, respectively ([S7 Fig](#)). With the exception of two epitopes (KGSRAIWYMW and YLAGAGLAF) in the Thailand specific set, and one epitope (RTLILAPTRVVAEM) in the Brazil-specific set, all the epitopes within the three country-specific target sets are also part of our proposed set for a universal dengue vaccine ([Fig 5](#)).

## Discussion

Incidence of infections from all serotypes of DENV continue to rise across the world, affecting more countries than ever before. Despite various efforts there is still no safe and effective vaccine that protects against dengue. Increasing experimental evidence indicates the potential protective role of T cell-based immune responses against DENV [13]. As all four serotypes of DENV are known to co-circulate in endemic regions and with increased risk of severe dengue from heterotypic infections, an effective vaccine should elicit protective T cell responses against most, if not all, serotypes. A fundamental question in designing such a cross-serotypic vaccine is whether there exist parts of the DENV proteome that are: (i) highly conserved across a majority of the four DENV serotypes, and (ii) immunogenic so that T cells can be trained to recognize them. In seeking to address this question, we analyzed the conservation profile of all experimentally-determined DENV T cell epitopes derived from human hosts within each serotype. We identified 55 T cell epitopes that are highly conserved within at least three serotypes. Their high conservation is apparently driven by functional/structural constraints imposed by the corresponding residues. Training T cells against these epitopes is expected to elicit robust responses against at least three DENV serotypes which may potentially be difficult to escape. Based on the identified top conserved epitopes, we also proposed a set of epitopes as recommended targets for a universal T cell-based dengue vaccine. This was chosen to maximize the global population coverage using HLA information associated with each epitope.





**Fig 5. Candidate for a universal DENV T-cell-based vaccine.** (A) Proposed set comprising 17 epitopes, selected from the set of top 55 DENV epitopes (Fig 3), that maximizes the global population coverage (left panel). The cells adjacent to each epitope represent its conservation within each DENV serotype and are colored according to the scale shown at the bottom. The population coverage of each epitope individually (middle panel) and the accumulated population coverage (right panel) of all epitopes up to and including the current one was calculated based on the information of the associated HLA alleles. Epitopes are ranked in increasing order of the accumulated coverage, which reached the maximum of 99.23%. Incorporating more epitopes within the set did not result in further increase of coverage (see S6 Fig). Epitopes are colored according to the protein from which they are derived while the HLA alleles are colored according to their class restriction. The number of epitopes within the proposed set derived from each protein is shown within parentheses at the bottom of left panel. (B) Population coverage by country of the proposed set of epitopes. Coverage is high in most countries, especially those with high incidence rate of dengue infections [41] such as Thailand (98.25%), Brazil (98.8%) and Philippines (96.73%). Countries for which the population coverage could not be computed due to the lack of country-specific HLA information or if no sequences were reported from them, are colored as grey. The map was generated using the “maps” package (<https://cran.r-project.org/web/packages/maps/index.html>) through the R programming language.

<https://doi.org/10.1371/journal.pntd.0008676.g005>



Most vaccine design efforts rely upon the use of LAVs to train the immune system for defending against DENV. However, LAVs pose multiple concerns. This includes mutation of the vaccine strain to virulent form, and the possibility of leading to severe dengue through ADE upon subsequent infection. In contrast, T cell-based vaccines are safer alternatives [59] as they not only eliminate the risks associated with LAVs, but they also provide the opportunity to explicitly train the immune system to target more precise regions of the viral proteome. Importantly, strong T cell responses against more conserved regions of DENV proteins have been correlated with protection from progression to severe disease [15].

Vaccination strategies targeting specifically the conserved epitopes are expected to develop cross-reactive T cell responses which would be expanded upon subsequent natural infection by any DENV serotype. However, this has not yet been demonstrated and further experimental studies are needed to examine the T cell responses elicited upon challenge with different serotypes following such vaccination. Encouragingly, there is evidence that T cell responses can be elicited against "conserved" epitopes among dengue/ flavivirus-naïve individuals vaccinated with monovalent as well as tetravalent LAVs, namely TV003 and TAK-003 vaccines [60,61], which are in advanced stages of clinical trials. Detectable T cell responses targeting some of the top 55 conserved epitopes identified in this study (Fig 3) have been reported in naïve individuals following immunization with these LAVs. Specifically, following vaccination with monovalent or tetravalent LAV TV003 [60] and with tetravalent LAV TAK-003 [61], T cell responses have been reported against 9 and 11 of the 55 identified epitopes, respectively (S4 Table). Moreover, there is evidence that a pre-existing T cell response against conserved epitopes is expanded in secondary infection [27,31]. Therefore, focusing the T cell response towards cross-serotypically conserved regions and away from serotype-specific regions, as proposed in this work, through properly designed T cell-based vaccines appears to be a promising vaccination strategy against DENV.

Various vaccine platforms (e.g., based on Modified Vaccinia Ankara (MVA) viral vector, polypeptide mixtures, fusion proteins and nanoparticles) which have been studied in clinical trials for T cell-based influenza vaccines [62–64] may be utilized for designing prospective T cell-based dengue vaccines employing the set of epitopes identified in this work. However, the T cell responses elicited against the combined set of (17) recommended epitopes need to be examined experimentally to determine their strength and the resulting immunodominance pattern of the epitopes. This is important because the sequence context in which the epitopes are delivered influences the intra-cellular processing and presentation of the T cell epitopes [65,66] and affects their immunodominance hierarchy [27]. Specifically, DENV epitopes are reported to have different immunodominance hierarchies depending upon the serotype as well as the order (primary vs secondary) of natural infection [27]. Furthermore, the presence of other antigenic peptides (i.e., potential epitopes) with respect to the cognate HLA molecules and the peptide-HLA binding affinity also affects epitope immunodominance [31,67]. Thus, while immunodominant epitopes are likely to elicit strong responses, precisely determining the immunodominance hierarchy of T cell epitopes is complex and beyond the scope of this study. This would require carefully designed experimental studies to examine the immune responses elicited following immunization with the proposed set of identified epitopes upon challenge with each DENV serotype.

There is evidence that by priming through vaccination, the immunodominance hierarchy can be altered and the immune response can be directed towards otherwise weakly immunodominant epitopes [66,68,69]. In fact, targeting such weakly immunodominant epitopes has been shown to even confer protection [23,70,71]. Thus, while a few of the 55 identified cross-serotypically conserved epitopes appear to be weakly immunodominant (Fig 3), we considered all of them when finding the subset of epitopes for recommending as vaccine targets (Fig 5).

The cross-serotypically conserved epitopes identified in our work differ from those obtained in previous related works [35–37]. Specifically, 44 pan-DENV conserved peptides (9 to 22 residues long) were identified in [35], 78 conserved regions (9 to 139 residues long) were identified in [36], and 46 peptides (15 to 18 residues long) were identified in [37]. None of these matched exactly with the 55 top conserved epitopes identified in this work. We note, however, that some of the conserved regions/peptides reported in the previous studies (10 peptides from [35] and 12 peptides from [37]), overlap partially with the top conserved epitopes identified in this work (S5 Table). We identify three main reasons for these differences. First, there is a larger amount of immunological and sequence data available now compared with past years when the previous studies were conducted, and this would affect the conservation profile of the epitopes. Second, our procedure is epitope-centric, which focuses on the conservation of precise DENV-specific T cell epitopes which have been experimentally-determined from human hosts, while the previous works [35,36] predicted conserved (large) regions/peptides from the sequence data alone which may not represent the precise epitope sequences processed and presented by the HLA molecules, and may not be immunogenic. Third, our definition of epitope conservation based on an “exact mapping” criterion is stricter and potentially more robust than the criteria used in previous works. This strict criterion is important for identifying robust vaccine targets because T cells trained against epitopes may not cross-react with even single residue variants of those epitopes (e.g., as reported for DENV epitope variants EENMDDVEIW and EENMEEVEIW [25]).

While we have recommended a set of target epitopes for a prospective T cell-based dengue vaccine that seeks to target a large proportion of the global population, the proposed framework also provides a template for identifying robust vaccine target recommendations for any specific population. The only additional information required is the HLA distribution of the specific population being targeted, which can be seamlessly incorporated with the accompanying source code (see <https://github.com/faraz107/Robust-DENV-Vaccine-Candidates>). We demonstrated this by identifying country-specific sets that maximize the individual population coverages for three dengue-endemic countries. This shows the promise of the proposed approach in identifying sets of epitopes for prospective vaccines targeting specific populations that are most adversely affected by dengue. Moreover, the developed framework can also be extended to perform a systematic study for identifying conserved epitopes across the flavivirus genus, particularly since there is evidence of cross-reactive T cell epitopes across different flaviviruses [72,73]. Similar approaches have been employed recently to identify potential immune targets for viruses belonging to other genera, e.g., SARS-CoV-2, the virus causing the ongoing COVID-19 pandemic [74–76].

We have also provided a comprehensive list of conservation profiles of 1,768 experimentally-determined DENV T cell epitopes with their associated HLAs (S1 File) which could serve as a reference for future studies. This comprehensive list can aid in reinterpreting earlier results. For example, the epitope NIQTAINQV was previously understood as being conserved across multiple DENV serotypes [77]. However, using the provided list one can observe that this epitope is only conserved in DENV2. Furthermore, it would be interesting to investigate the functional/structural importance of all the top cross-serotypically conserved epitopes identified in this work to better understand molecular determinants of their conservation.

## Supporting information

### **S1 Fig. Coverage of DENV T cell epitopes across the primary structure of DENV proteins.**

The locations of epitopes were determined by mapping them onto all: (A) DENV2, (B) DENV3, and (C) DENV4 sequences, respectively. The color scales in (A)–(C) indicate the

HLA class restriction of the epitopes.  
(PDF)

**S2 Fig. Top conserved epitopes are different only at DENV serotype-specific residues.**

Sequence-logos of top epitopes that are not highly conserved in one of the four DENV serotypes for: (A) 15 epitopes of NS5, (B) 16 epitopes of NS3, and (C) 2 epitopes of E (top panel) and 3 epitopes of NS4b (bottom panel).  
(PDF)

**S3 Fig. Conservation of the 1,768 T cell epitope sequences across the DENV serotypes.**

Cells adjacent to each epitope represents its conservation within each DENV serotype. The conservation level (i.e., fraction of sequences in which a given epitope was exactly mapped) for an epitope within a serotype was determined by mapping it onto all the corresponding protein sequences for that serotype, as shown in Fig 2B. All epitopes are shown here in descending order (top to bottom then left to right) of their mean conservation across the serotypes and colored according to the protein from which they are derived.  
(PDF)

**S4 Fig. Histogram of minimum conservation of epitopes among 3 DENV serotypes.** Minimum conservation of epitopes across sets of 3 out of 4 DENV serotypes. The conservation for each epitope within each serotype of DENV was determined after mapping the epitopes onto the corresponding protein sequences, as shown in Fig 2B. A threshold of 0.9 was used that resulted in the set of 55 top epitopes (i.e., epitopes that mapped exactly onto at least 90% of sequences in at least 3 of the 4 DENV serotypes were selected), shown in Fig 3. The histograms show that the selection of epitopes is robust to the choice of threshold.  
(PDF)

**S5 Fig. Some top epitopes are putatively involved in the inter-dimer interface in the quaternary structure proposed for DENV NS5.** The NS5 dimer structure (PDB: 5CCV) proposed in [53] is shown where one monomer is colored blue and the other green. The residues of two top NS5 epitopes (GPGHEEPIPM and KVRKDIPQW) that are involved in the inter-dimer interface are shown as spheres.  
(PDF)

**S6 Fig. Global population coverage for the identified top DENV T cell epitopes.** (Left panel) Top 51 epitopes, selected from the set of top 55 DENV epitopes (Fig 3) that had at least one HLA allele associated with 4-digit resolution. The cells adjacent to each epitope represent its conservation within each DENV serotype. The individual population coverage of each epitope (Middle panel) and the accumulated population coverage of the combination of epitopes (Right panel) was calculated based on the associated HLA alleles. The epitopes are ranked in increasing order of the accumulated coverage which reached the maximum of 99.23% with top 17 epitopes. The remaining epitopes are ordered in decreasing order of their mean conservation (Fig 3). Epitopes are colored according to the protein from which they are derived while the HLA alleles are colored according to their class restriction. Number of epitopes derived from each protein is shown within parentheses at the bottom of left panel.  
(PDF)

**S7 Fig. Proposed immunogens for country-specific populations.** (A) Thailand, (B) Philippines and (C) Brazil. For all (A-C): (Left panel) Proposed immunogens comprising epitopes selected from the set of top 55 DENV epitopes (Fig 3), that maximized the country-specific population coverages. The cells adjacent to each epitope represent its conservation within each DENV serotype. (Middle panel) The individual population coverage of each epitope and (right

panel) the accumulated population coverage calculated based on the associated HLA alleles. The epitopes are ranked in increasing order of the accumulated coverage which reached the maximum of: (A) 98.25%, (B) 96.73%, and (C) 98.8%. Incorporating more top epitopes within these immunogens did not result in further increase of coverage. Epitopes are colored according to the protein from which they are derived while the HLA alleles are colored according to their class restriction. Number of epitopes within the immunogens derived from each protein is shown within parentheses at the bottom of left panel in (A-C) respectively.  
(PDF)

**S8 Fig. Reported epitope-HLA binding affinity for the top 55 conserved epitopes (Fig 3) in the context of cognate HLA alleles.** The quantitative measure, IC50 values, of epitope-MHC binding was extracted from positive MHC assays corresponding to these epitopes in the IEDB database. Color of the cells represent the strength of the binding affinity. White cells represent epitope-HLA complexes for which no binding measurements were reported.  
(PDF)

**S9 Fig. Cross-serotypically-conserved DENV T cell epitopes from HLA-transgenic mice.** Of the 213 experimentally-determined HLA-transgenic mice epitopes, 9 mapped exactly onto at least 90% of sequences in at least 3 of the 4 DENV serotypes. Five of these epitopes—APTRV-VAAEM, ELMRRGDLPV, RVIDPRRCL, SRAIWYMWLGARFLE, and LPAIVREAI—were also reported from human hosts (Fig 3). Cells adjacent to each epitope represents its conservation within each DENV serotype. The conservation of an epitope within a serotype was determined using the exact mapping procedure (Fig 2B). All epitopes are shown here in descending order (top to bottom) of their mean conservation across the serotypes and colored according to the protein from which they are derived.  
(PDF)

**S1 Table. List of ViPR database based strain names and mature peptide IDs of DENV protein sequences used in the analysis.** The 56,496 DENV protein sequences were downloaded from ViPR database [42] (<https://www.viprbrc.org/>; accessed July 30, 2019).  
(CSV)

**S2 Table. List of DENV-specific T cell epitopes used in the analysis.** The 1,768 DENV-specific epitope sequences were downloaded from ViPR database [42] (<https://www.viprbrc.org/>; accessed November 15, 2019).  
(CSV)

**S3 Table. Cross-serotypically conserved epitopes identified in this study (Fig 3) that are reported as immunodominant in previous studies.**  
(PDF)

**S4 Table. Cross-serotypically conserved epitopes identified in this study (Fig 3) against which T cell responses were reported in naïve individuals following vaccination.**  
(PDF)

**S5 Table. Conserved peptides/epitopes reported in previous works that overlap with cross-serotypically conserved epitopes identified in this study (Fig 3).** Overlapping residues are indicated as red.  
(PDF)

**S1 File. Cross-serotypic conservation profiles of DENV T cell epitopes experimentally-determined from human hosts.** This HTML table serves as an easy-to-use tool for browsing, filtering, exploring and exporting conservation profiles and associated HLA alleles information

about DENV T cell epitopes.  
(HTML)

**S2 File. Cross-serotypic conservation profiles and immune response data of the top 55 conserved DENV T cell epitopes identified in this study (Fig 3).** Immune response data includes response frequency, and qualitative and quantitative binding reported in IEDB for each identified epitope. The response frequency percentile for each epitope, that we computed using the response frequencies of all available DENV epitopes, is also included in this table.  
(HTML)

**S3 File. Cross-serotypic conservation profiles of 213 DENV T cell epitopes experimentally-determined from HLA-transgenic mice.**  
(HTML)

## Author Contributions

**Conceptualization:** Syed Faraz Ahmed, Ahmed A. Quadeer, Matthew R. McKay.

**Data curation:** Syed Faraz Ahmed.

**Formal analysis:** Syed Faraz Ahmed, Ahmed A. Quadeer, John P. Barton, Matthew R. McKay.

**Funding acquisition:** Matthew R. McKay.

**Investigation:** Syed Faraz Ahmed, Ahmed A. Quadeer, John P. Barton, Matthew R. McKay.

**Methodology:** Syed Faraz Ahmed, Ahmed A. Quadeer, Matthew R. McKay.

**Project administration:** Matthew R. McKay.

**Resources:** Syed Faraz Ahmed.

**Software:** Syed Faraz Ahmed.

**Supervision:** Ahmed A. Quadeer, John P. Barton, Matthew R. McKay.

**Validation:** Syed Faraz Ahmed, Ahmed A. Quadeer, John P. Barton, Matthew R. McKay.

**Visualization:** Syed Faraz Ahmed.

**Writing – original draft:** Syed Faraz Ahmed, Ahmed A. Quadeer, Matthew R. McKay.

**Writing – review & editing:** Syed Faraz Ahmed, Ahmed A. Quadeer, John P. Barton, Matthew R. McKay.

## References

1. UN fact sheets. Dengue and severe dengue. 2019 [cited 14 Oct 2019]. Available: <https://www.who.int/en/news-room/fact-sheets/detail/dengue-and-severe-dengue>
2. Katzelnick LC, Fonville JM, Gromowski GD, Bustos Arriaga J, Green A, James SL, et al. Dengue viruses cluster antigenically but not as discrete serotypes. *Science*. 2015; 349: 1338–43. <https://doi.org/10.1126/science.aac5017> PMID: 26383952
3. Wilder-Smith A, Ooi E-EE, Horstick O, Wills B. Dengue. *Lancet*. 2019; 393: 350–363. [https://doi.org/10.1016/S0140-6736\(18\)32560-1](https://doi.org/10.1016/S0140-6736(18)32560-1) PMID: 30696575
4. Stanaway JD, Shepard DS, Undurraga EA, Halasa YA, Coffeng LE, Brady OJ, et al. The global burden of dengue: an analysis from the Global Burden of Disease Study 2013. *Lancet Infect Dis*. 2016; 16: 712–723. [https://doi.org/10.1016/S1473-3099\(16\)00026-8](https://doi.org/10.1016/S1473-3099(16)00026-8) PMID: 26874619
5. Bhatt S, Gething PW, Brady OJ, Messina JP, Farlow AW, Moyes CL, et al. The global distribution and burden of dengue. *Nature*. 2013; 496: 504–7. <https://doi.org/10.1038/nature12060> PMID: 23563266

6. Messina JP, Brady OJ, Scott TW, Zou C, Pigott DM, Duda KA, et al. Global spread of dengue virus types: mapping the 70 year history. *Trends Microbiol.* 2014; 22: 138–146. <https://doi.org/10.1016/j.tim.2013.12.011> PMID: 24468533
7. Brady OJ, Gething PW, Bhatt S, Messina JP, Brownstein JS, Hoen AG, et al. Refining the global spatial limits of dengue virus transmission by evidence-based consensus. Reithinger R, editor. *PLoS Negl Trop Dis.* 2012; 6: e1760. <https://doi.org/10.1371/journal.pntd.0001760> PMID: 22880140
8. Low JGH, Ooi EE, Vasudevan SG. Current status of dengue therapeutics research and development. *J Infect Dis.* 2017; 215: S96–S102. <https://doi.org/10.1093/infdis/jiw423> PMID: 28403438
9. Guzman MG, Harris E. Dengue. *Lancet.* 2015; 385: 453–465. [https://doi.org/10.1016/S0140-6736\(14\)60572-9](https://doi.org/10.1016/S0140-6736(14)60572-9) PMID: 25230594
10. Sridhar S, Luedtke A, Langevin E, Zhu M, Bonaparte M, Machabert T, et al. Effect of dengue serostatus on dengue vaccine safety and efficacy. *N Engl J Med.* 2018; 379: 327–340. <https://doi.org/10.1056/NEJMoa1800820> PMID: 29897841
11. Screaton G, Mongkolsapaya J, Yacoub S, Roberts C. New insights into the immunopathology and control of dengue virus infection. *Nat Rev Immunol.* 2015; 15: 745–759. <https://doi.org/10.1038/nri3916> PMID: 26603900
12. Zellweger RM, Prestwood TR, Shresta S. Enhanced infection of liver sinusoidal endothelial cells in a mouse model of antibody-induced severe dengue disease. *Cell Host Microbe.* 2010; 7: 128–139. <https://doi.org/10.1016/j.chom.2010.01.004> PMID: 20153282
13. Elong Ngono A, Shresta S. Immune response to dengue and zika. *Annu Rev Immunol.* 2018; 36: 279–308. <https://doi.org/10.1146/annurev-immunol-042617-053142> PMID: 29345964
14. Yauch LE, Zellweger RM, Kotturi MF, Qutubuddin A, Sidney J, Peters B, et al. A protective role for dengue virus-specific CD8 + T cells. *J Immunol.* 2009; 182: 4865–4873. <https://doi.org/10.4049/jimmunol.0801974> PMID: 19342665
15. Elong Ngono A, Chen HW, Tang WW, Joo Y, King K, Weiskopf D, et al. Protective role of cross-reactive CD8 T cells against dengue virus infection. *EBioMedicine.* 2016; 13: 284–293. <https://doi.org/10.1016/j.ebiom.2016.10.006> PMID: 27746192
16. Wen J, Shresta S. T cell immunity to zika and dengue viral infections. *J Interf Cytokine Res.* 2017; 37: 475–479. <https://doi.org/10.1089/jir.2017.0106> PMID: 29135369
17. Rivino L. T cell immunity to dengue virus and implications for vaccine design. *Expert Rev Vaccines.* 2016; 15: 443–453. <https://doi.org/10.1586/14760584.2016.1116948> PMID: 26560171
18. Roth C, Cantaert T, Colas C, Prot M, Casad munt I, Levillayer L, et al. A modified mRNA vaccine targeting immunodominant NS epitopes protects against dengue virus infection in HLA class I transgenic mice. *Front Immunol.* 2019; 10: 1–14. <https://doi.org/10.3389/fimmu.2019.00001> PMID: 30723466
19. Chu H, George SL, Stinchcomb DT, Osorio JE, Partidos CD. CD8 + T-cell responses in flavivirus-naive individuals following immunization with a live-attenuated tetravalent dengue vaccine candidate. *J Infect Dis.* 2015; 212: 1618–1628. <https://doi.org/10.1093/infdis/jiv258> PMID: 25943203
20. Whitehead SS. Development of TV003/TV005, a single dose, highly immunogenic live attenuated dengue vaccine; what makes this vaccine different from the Sanofi-Pasteur CYDTM vaccine? *Expert Rev Vaccines.* 2016; 15: 509–517. <https://doi.org/10.1586/14760584.2016.1115727> PMID: 26559731
21. Torresi J, Ebert G, Pellegrini M. Vaccines licensed and in clinical trials for the prevention of dengue. *Hum Vaccin Immunother.* 2017; 13: 1059–1072. <https://doi.org/10.1080/21645515.2016.1261770> PMID: 28281864
22. Elong Ngono A, Shresta S. Cross-reactive T cell immunity to dengue and zika viruses: New insights into vaccine development. *Front Immunol.* 2019; 10: 1316. <https://doi.org/10.3389/fimmu.2019.01316> PMID: 31244855
23. Holtappels R, Simon CO, Munks MW, Thomas D, Deegen P, K hnapfel B, et al. Subdominant CD8 T-cell epitopes account for protection against cytomegalovirus independent of immunodomination. *J Virol.* 2008; 82: 5781–96. <https://doi.org/10.1128/JVI.00155-08> PMID: 18367531
24. Duangchinda T, Dejnirattisai W, Vasana-wathana S, Limpitikul W, Tangthawornchaikul N, Malasit P, et al. Immunodominant T-cell responses to dengue virus NS3 are associated with DHF. *Proc Natl Acad Sci.* 2010; 107: 16922–16927. <https://doi.org/10.1073/pnas.1010867107> PMID: 20837518
25. Piazza P, Campbell D, Marques E, Hildebrand WH, Buchli R, Mailliard R, et al. Dengue virus-infected human dendritic cells reveal hierarchies of naturally expressed novel NS3 CD8 T cell epitopes. *Clin Exp Immunol.* 2014; 177: 696–702. <https://doi.org/10.1111/cei.12373> PMID: 24816171
26. de Alwis R, Bangs DJ, Angelo MA, Cerpas C, Fernando A, Sidney J, et al. Immunodominant dengue virus-specific CD8 + T cell responses are associated with a memory PD-1 + phenotype. Perlman S, editor. *J Virol.* 2016; 90: 4771–4779. <https://doi.org/10.1128/JVI.02892-15> PMID: 26912627



27. Weiskopf D, Angelo MA, Sidney J, Peters B, Shresta S, Sette A. Immunodominance changes as a function of the infecting dengue virus serotype and primary versus secondary infection. *J Virol*. 2014; 88: 11383–11394. <https://doi.org/10.1128/JVI.01108-14> PMID: 25056881
28. Weiskopf D, Cerpas C, Angelo MA, Bangs DJ, Sidney J, Paul S, et al. Human CD8 + T-cell responses against the 4 dengue virus serotypes are associated with distinct patterns of protein targets. *J Infect Dis*. 2015; 212: 1743–1751. <https://doi.org/10.1093/infdis/jiv289> PMID: 25980035
29. Grifoni A, Angelo MA, Lopez B, O'Rourke PH, Sidney J, Cerpas C, et al. Global assessment of dengue virus-specific CD 4+ T Cell responses in dengue-endemic areas. *Front Immunol*. 2017; 8: 1–13. <https://doi.org/10.3389/fimmu.2017.00001> PMID: 28149297
30. Gordon A, Kuan G, Mercado JC, Gresh L, Avilés W, Balmaseda A, et al. The Nicaraguan pediatric dengue cohort study: Incidence of inapparent and symptomatic dengue virus infections, 2004–2010. Petti-grew MM, editor. *PLoS Negl Trop Dis*. 2013; 7: e2462. <https://doi.org/10.1371/journal.pntd.0002462> PMID: 24086788
31. Weiskopf D, Angelo MA, de Azeredo EL, Sidney J, Greenbaum JA, Fernando AN, et al. Comprehensive analysis of dengue virus-specific responses supports an HLA-linked protective role for CD8+ T cells. *Proc Natl Acad Sci U S A*. 2013; 110: E2046–53. <https://doi.org/10.1073/pnas.1305227110> PMID: 23580623
32. Wijeratne DT, Fernando S, Gomes L, Jeewandara C, Ginneliya A, Samarasekara S, et al. Quantifica-tion of dengue virus specific T cell responses and correlation with viral load and clinical disease severity in acute dengue infection. Shresta S, editor. *PLoS Negl Trop Dis*. 2018; 12: e0006540. <https://doi.org/10.1371/journal.pntd.0006540> PMID: 30273352
33. Zellweger RM, Eddy WE, Tang WW, Miller R, Shresta S. CD8 + T cells prevent antigen-induced anti-body-dependent enhancement of dengue disease in mice. *J Immunol*. 2014; 193: 4117–4124. <https://doi.org/10.4049/jimmunol.1401597> PMID: 25217165
34. Lam JH, Chua YL, Lee PX, Martínez Gómez JM, Ooi EE, Alonso S. Dengue vaccine-induced CD8+ T cell immunity confers protection in the context of enhancing, interfering maternal antibodies. *JCI Insight*. 2017; 2. <https://doi.org/10.1172/jci.insight.94500> PMID: 29263304
35. Khan AM, Miotto O, Nascimento EJM, Srinivasan KN, Heiny AT, Zhang GL, et al. Conservation and var-iability of dengue virus proteins: Implications for vaccine design. *PLoS Negl Trop Dis*. 2008; 2.
36. Olsen L. Conservation analysis of dengue virus T-cell epitope-based vaccine candidates using peptide block entropy. *Front Immunol*. 2011; 2: 1–15. <https://doi.org/10.3389/fimmu.2011.00001> PMID: 22566792
37. Nascimento EJM, Mailliard RB, Khan AM, Sidney J, Sette A, Guzman N, et al. Identification of con-served and HLA promiscuous DENV3 T-cell epitopes. *PLoS Negl Trop Dis*. 2013; 7. <https://doi.org/10.1371/journal.pntd.0002497> PMID: 24130917
38. Sloan-Lancaster J, Allen PM. Altered peptide ligand-induced partial T cell activation: Molecular mecha-nisms and role in T cell biology. *Annu Rev Immunol*. 1996; 14: 1–27. <https://doi.org/10.1146/annurev.immunol.14.1.1> PMID: 8717505
39. Kalergis AM, Nathenson SG. Altered peptide ligand-mediated TCR antagonism can be modulated by a change in a single amino acid residue within the CDR3 beta of an MHC class I-restricted TCR. *J Immu-nol*. 2000; 165: 280–5. <https://doi.org/10.4049/jimmunol.165.1.280> PMID: 10861062
40. Ogishi M, Yotsuyanagi H. Quantitative prediction of the landscape of T cell epitope immunogenicity in sequence space. *Front Immunol*. 2019; 10: 827. <https://doi.org/10.3389/fimmu.2019.00827> PMID: 31057550
41. European Centre for disease prevention and. Dengue worldwide overview. 2019 [cited 29 Nov 2019]. Available: <https://www.ecdc.europa.eu/en/dengue-monthly>
42. Pickett BE, Sadat EL, Zhang Y, Noronha JM, Squires RB, Hunt V, et al. ViPR: An open bioinformatics database and analysis resource for virology research. *Nucleic Acids Res*. 2012; 40: D593–8. <https://doi.org/10.1093/nar/gkr859> PMID: 22006842
43. Katoh K, Standley DM. MAFFT multiple sequence alignment software version 7: Improvements in per-formance and usability. *Mol Biol Evol*. 2013; 30: 772–780. <https://doi.org/10.1093/molbev/mst010> PMID: 23329690
44. Grifoni A, Moore E, Voic H, Sidney J, Phillips E, Jadi R, et al. Characterization of magnitude and antigen specificity of HLA-DP, DQ, and DRB3/4/5 restricted DENV-specific CD4+ T cell responses. *Front Immu-nol*. 2019; 10: 1–10. <https://doi.org/10.3389/fimmu.2019.00001> PMID: 30723466
45. Vita R, Mahajan S, Overton JA, Dhanda SK, Martini S, Cantrell JR, et al. The immune epitope database (IEDB): 2018 update. *Nucleic Acids Res*. 2019; 47: D339–D343. <https://doi.org/10.1093/nar/gky1006> PMID: 30357391

46. González-Galarza FF, Takeshita LYC, Santos EJM, Kempson F, Maia MHT, Silva ALS da, et al. Allele frequency net 2015 update: New features for HLA epitopes, KIR and disease and HLA adverse drug reaction associations. *Nucleic Acids Res.* 2015; 43: D784–D788. <https://doi.org/10.1093/nar/gku1166> PMID: 25414323
47. Weiskopf D, Sette A. T-cell immunity to infection with dengue virus in humans. *Front Immunol.* 2014; 5: 93. <https://doi.org/10.3389/fimmu.2014.00093> PMID: 24639680
48. Tian Y, Grifoni A, Sette A, Weiskopf D. Human T cell response to dengue virus infection. *Front Immunol.* 2019; 10: 1–9. <https://doi.org/10.3389/fimmu.2019.00001> PMID: 30723466
49. Raué H-P, Slifka MK. CD8+ T cell immunodominance shifts during the early stages of acute LCMV infection independently from functional avidity maturation. *Virology.* 2009; 390: 197–204. <https://doi.org/10.1016/j.virol.2009.05.021> PMID: 19539966
50. Swarbrick CMD, Basavannacharya C, Chan KWK, Chan SA, Singh D, Wei N, et al. NS3 helicase from dengue virus specifically recognizes viral RNA sequence to ensure optimal replication. *Nucleic Acids Res.* 2017; 45: 12904–12920. <https://doi.org/10.1093/nar/gkx1127> PMID: 29165589
51. Teramoto T, Balasubramanian A, Choi KH, Padmanabhan R. Serotype-specific interactions among functional domains of dengue virus 2 nonstructural proteins (NS) 5 and NS3 are crucial for viral RNA replication. *J Biol Chem.* 2017; 292: 9465–9479. <https://doi.org/10.1074/jbc.M117.775643> PMID: 28396347
52. Patil VM, Balasubramanian K, Masand N. Dengue virus polymerase. *Viral Polymerases.* Elsevier; 2019. pp. 387–428. <https://doi.org/10.1016/B978-0-12-815422-9.00014-0>
53. Klema VJ, Ye M, Hindupur A, Teramoto T, Gottipati K, Padmanabhan R, et al. Dengue virus nonstructural protein 5 (NS5) assembles into a dimer with a unique methyltransferase and polymerase interface. *PLoS Pathog.* 2016; 12: 1–21. <https://doi.org/10.1371/journal.ppat.1005451> PMID: 26895240
54. da Fonseca NJ, Lima Afonso MQ, Pedersolli NG, de Oliveira LC, Andrade DS, Bleicher L. Sequence, structure and function relationships in flaviviruses as assessed by evolutive aspects of its conserved non-structural protein domains. *Biochem Biophys Res Commun.* 2017; 492: 565–571. <https://doi.org/10.1016/j.bbrc.2017.01.041> PMID: 28087275
55. Lim SP, Noble CG, Shi P-YY. The dengue virus NS5 protein as a target for drug discovery. *Antiviral Res.* 2015; 119: 57–67. <https://doi.org/10.1016/j.antiviral.2015.04.010> PMID: 25912817
56. Li Z, Zhang J, Li H. Flavivirus NS2B/NS3 protease: Structure, function, and inhibition. *Viral Proteases and Their Inhibitors.* Elsevier; 2017. pp. 163–188. <https://doi.org/10.1016/B978-0-12-809712-0.00007-1>
57. Luo D, Vasudevan SG, Lescar J. The flavivirus NS2B-NS3 protease-helicase as a target for antiviral drug development. *Antiviral Res.* 2015; 118: 148–158. <https://doi.org/10.1016/j.antiviral.2015.03.014> PMID: 25842996
58. Luo D, Xu T, Hunke C, Gruber G, Vasudevan SG, Lescar J. Crystal structure of the NS3 protease-helicase from dengue virus. *J Virol.* 2008; 82: 173–183. <https://doi.org/10.1128/JVI.01788-07> PMID: 17942558
59. Reginald K, Chan Y, Plebanski M, Poh CL. Development of peptide vaccines in dengue. *Curr Pharm Des.* 2018; 24: 1157–1173. <https://doi.org/10.2174/1381612823666170913163904> PMID: 28914200
60. Weiskopf D, Angelo MA, Bangs DJ, Sidney J, Paul S, Peters B, et al. The human CD8+ T cell responses induced by a live attenuated tetravalent dengue vaccine are directed against highly conserved epitopes. Diamond MS, editor. *J Virol.* 2015; 89: 120–128. <https://doi.org/10.1128/JVI.02129-14> PMID: 25320311
61. Waickman AT, Friberg H, Gargulak M, Kong A, Polhemus M, Endy T, et al. Assessing the diversity and stability of cellular immunity generated in response to the candidate live-attenuated dengue virus vaccine TAK-003. *Front Immunol.* 2019; 10: 1–13. <https://doi.org/10.3389/fimmu.2019.00001> PMID: 30723466
62. Berthoud TK, Hamill M, Lillie PJ, Hwenda L, Collins KA, Ewer KJ, et al. Potent CD8+ T-cell immunogenicity in humans of a novel heterosubtypic influenza A vaccine, MVA-NP+M1. *Clin Infect Dis.* 2011; 52: 1–7. <https://doi.org/10.1093/cid/ciq015> PMID: 21148512
63. Atsmon J, Kate-Ilovitz E, Shaikevich D, Singer Y, Volokhov I, Haim KY, et al. Safety and immunogenicity of multimeric-001—A novel universal influenza vaccine. *J Clin Immunol.* 2012; 32: 595–603. <https://doi.org/10.1007/s10875-011-9632-5> PMID: 22318394
64. Pleguezuelos O, Robinson S, Fernández A, Stoloff GA, Mann A, Gilbert A, et al. A synthetic influenza virus vaccine induces a cellular immune response that correlates with reduction in symptomatology and virus shedding in a randomized phase Ib live-virus challenge in humans. *Clin Vaccine Immunol.* 2015; 22: 828–835. <https://doi.org/10.1128/CVI.00098-15> PMID: 25994549

65. Martinez AN, Tenzer S, Schild H. T-cell epitope processing (The epitope flanking regions matter). *Methods in Molecular Biology*. 2009. pp. 407–415. [https://doi.org/10.1007/978-1-59745-450-6\\_29](https://doi.org/10.1007/978-1-59745-450-6_29) PMID: [19377961](https://pubmed.ncbi.nlm.nih.gov/19377961/)
66. Welsh RM, Che JW, Brehm MA, Selin LK. Heterologous immunity between viruses. *Immunol Rev*. 2010; 235: 244–266. <https://doi.org/10.1111/j.0105-2896.2010.00897.x> PMID: [20536568](https://pubmed.ncbi.nlm.nih.gov/20536568/)
67. Feltkamp MCW, Vierboom MPM, Kast WM, Melief CJM. Efficient MHC class I-peptide binding is required but does not ensure MHC class I-restricted immunogenicity. *Mol Immunol*. 1994; 31: 1391–1401. [https://doi.org/10.1016/0161-5890\(94\)90155-4](https://doi.org/10.1016/0161-5890(94)90155-4) PMID: [7823965](https://pubmed.ncbi.nlm.nih.gov/7823965/)
68. Im E-J, Hong JP, Roshorm Y, Bridgeman A, Létourneau S, Liljeström P, et al. Protective efficacy of serially up-ranked subdominant CD8+ T cell epitopes against virus challenges. Douek DC, editor. *PLoS Pathog*. 2011; 7: e1002041. <https://doi.org/10.1371/journal.ppat.1002041> PMID: [21625575](https://pubmed.ncbi.nlm.nih.gov/21625575/)
69. Remakus S, Rubio D, Ma X, Sette A, Sigal LJ. Memory CD8 + T cells specific for a single immunodominant or subdominant determinant induced by peptide-dendritic cell immunization protect from an acute lethal viral disease. *J Virol*. 2012; 86: 9748–9759. <https://doi.org/10.1128/JVI.00981-12> PMID: [22740418](https://pubmed.ncbi.nlm.nih.gov/22740418/)
70. Ruckwardt TJ, Luongo C, Malloy AMW, Liu J, Chen M, Collins PL, et al. Responses against a subdominant CD8 + T cell epitope protect against immunopathology caused by a dominant epitope. *J Immunol*. 2010; 185: 4673–4680. <https://doi.org/10.4049/jimmunol.1001606> PMID: [20833834](https://pubmed.ncbi.nlm.nih.gov/20833834/)
71. Frahm N, Kiepiela P, Adams S, Linde CH, Hewitt HS, Sango K, et al. Control of human immunodeficiency virus replication by cytotoxic T lymphocytes targeting subdominant epitopes. *Nat Immunol*. 2006; 7: 173–178. <https://doi.org/10.1038/ni1281> PMID: [16369537](https://pubmed.ncbi.nlm.nih.gov/16369537/)
72. Slon Campos JL, Mongkolsapaya J, Srean G. The immune response against flaviviruses. *Nat Immunol*. 2018; 19: 1189–1198. <https://doi.org/10.1038/s41590-018-0210-3> PMID: [30333606](https://pubmed.ncbi.nlm.nih.gov/30333606/)
73. Rathore APS, St. John AL. Cross-reactive immunity among flaviviruses. *Front Immunol*. 2020; 11: 1–9. <https://doi.org/10.3389/fimmu.2020.00001> PMID: [32038653](https://pubmed.ncbi.nlm.nih.gov/32038653/)
74. Grifoni A, Sidney J, Zhang Y, Scheuermann RH, Peters B, Sette A. A sequence homology and bioinformatic approach can predict candidate targets for immune responses to SARS-CoV-2. *Cell Host Microbe*. 2020; 27: 671–680.e2. <https://doi.org/10.1016/j.chom.2020.03.002> PMID: [32183941](https://pubmed.ncbi.nlm.nih.gov/32183941/)
75. Ahmed SF, Quadeer AA, McKay MR. Preliminary identification of potential vaccine targets for the COVID-19 coronavirus (SARS-CoV-2) based on SARS-CoV immunological studies. *Viruses*. 2020; 12: 254. <https://doi.org/10.3390/v12030254> PMID: [32106567](https://pubmed.ncbi.nlm.nih.gov/32106567/)
76. Ahmed SF, Quadeer AA, McKay MR. COVIDep: A web-based platform for real-time reporting of vaccine target recommendations for SARS-CoV-2. *Nat Protoc*. 2020; 15: 2141–2142. <https://doi.org/10.1038/s41596-020-0358-9> PMID: [32555466](https://pubmed.ncbi.nlm.nih.gov/32555466/)
77. Testa JS, Shetty V, Sinnathamby G, Nickens Z, Hafner J, Kamal S, et al. Conserved MHC class I-presented dengue virus epitopes identified by immunoproteomics analysis are targets for cross-serotype reactive T-Cell response. *J Infect Dis*. 2012; 205: 647–655. <https://doi.org/10.1093/infdis/jir814> PMID: [22246683](https://pubmed.ncbi.nlm.nih.gov/22246683/)