

UCSF

UC San Francisco Previously Published Works

Title

FAM222A encodes a protein which accumulates in plaques in Alzheimer's disease

Permalink

<https://escholarship.org/uc/item/91m9z93j>

Journal

Nature Communications, 11(1)

ISSN

2041-1723

Authors

Yan, Tingxiang

Liang, Jingjing

Gao, Ju

et al.

Publication Date

2020

DOI

10.1038/s41467-019-13962-0

Peer reviewed

ARTICLE

<https://doi.org/10.1038/s41467-019-13962-0>

OPEN

FAM222A encodes a protein which accumulates in plaques in Alzheimer's disease

Tingxiang Yan^{1,80}, Jingjing Liang^{2,80*}, Ju Gao^{1,80}, Luwen Wang^{1,80}, Hisashi Fujioka³, The Alzheimer Disease Neuroimaging Initiative, Xiaofeng Zhu^{2*} & Xinglong Wang^{1*}

Alzheimer's disease (AD) is characterized by amyloid plaques and progressive cerebral atrophy. Here, we report *FAM222A* as a putative brain atrophy susceptibility gene. Our cross-phenotype association analysis of imaging genetics indicates a potential link between *FAM222A* and AD-related regional brain atrophy. The protein encoded by *FAM222A* is predominantly expressed in the CNS and is increased in brains of patients with AD and in an AD mouse model. It accumulates within amyloid deposits, physically interacts with amyloid- β (A β) via its N-terminal A β binding domain, and facilitates A β aggregation. Intracerebroventricular infusion or forced expression of this protein exacerbates neuroinflammation and cognitive dysfunction in an AD mouse model whereas ablation of this protein suppresses the formation of amyloid deposits, neuroinflammation and cognitive deficits in the AD mouse model. Our data support the pathological relevance of protein encoded by *FAM222A* in AD.

¹Department of Pathology, Case Western Reserve University, Cleveland, OH, USA. ²Department of Population and Quantitative Health Sciences, Case Western Reserve University, Cleveland, OH, USA. ³Electron Microscopy Core Facility, Case Western Reserve University, Cleveland, OH, USA. ⁸⁰These authors contributed equally: Tingxiang Yan, Jingjing Liang, Ju Gao, Luwen Wang. A full list of consortium members appears at the end of the paper.

*email: jingjing.liang@case.edu; xxz10@case.edu; xinglong.wang@case.edu

Alzheimer's disease (AD), the leading cause of dementia named for Dr. Alois Alzheimer, is characterized by pathologic hallmarks amyloid plaques and neurofibrillary tangles, and accompanied by other prominent pathological changes such as progressive atrophy of the brain, neuropil threads, dystrophic neurites, granulovacuolar degeneration, Hirano bodies, and cerebrovascular amyloid¹. Amyloid plaques are spherical extracellular lesions composed of amyloid- β (A β) peptides, whereas neurofibrillary tangles are intracellular lesions made up of hyperphosphorylated form of the microtubule-associated protein tau. Although many risk factors such as aging, lifestyle, and environmental factors are usually considered for the pathogenesis, AD is increasingly proposed to be a genetically dichotomous disease in the early-onset familial form showing classical Mendelian inheritance with little influence from the environment (EOAD), or in the late-onset sporadic form inherited in a non-Mendelian fashion (LOAD)².

Less than 10% of AD cases are EOAD with only a small fraction caused by autosomal dominantly inherited genetic changes in amyloid precursor protein (APP), presenilin 1 (PS1) or presenilin 2 (PS2), all of which are responsible for the overproduction of A β and the earlier formation of amyloid plaques³. Though more than 90% of AD cases are LOAD referred to as sporadic AD without family history, they have the similar clinical and pathologic phenotypes as EOAD and are heritable⁴. In the past decade, intensive efforts have been made to identify over 25 genes associated with AD⁵. In support of the dominant amyloid cascade hypothesis suggesting A β deposition in the brain as the primary cause, a number of AD-associated genes are enriched in the APP processing pathway, and involved in A β overproduction and amyloid plaque deposition though their encoded proteins are usually not directly associated with amyloid plaques.

Quantitative structural magnetic resonance imaging (MRI) has been extensively used for assessment of AD-related structural differences in selective brain regions⁶. Genome-wide association studies (GWAS) using MRI measures have identified several AD risk variants^{7,8}. Likewise, the MRI changes in statistically-defined regions of interest (ROI) were found closely associated with reported AD risk variants^{9,10}. Genetic loci harboring variants can be associated with multiple, sometimes seemingly distinct, traits^{11,12}. The test for such associations, i.e., cross-phenotype association test, has been increasingly employed to investigate the genetic overlap between multiple traits and diseases. Our previous study has developed a cross-phenotype association analysis (CPASSOC) that can integrate association evidence from GWAS summary statistics of multiple traits, either correlated,

independent, continuous, or binary traits, and has been successfully used to identify four loci associated with hypertension-related traits missed by a single-trait analysis¹³. In this study, we performed CPASSOC analysis of MRI measures and genetic datasets, and identified a possible link between *FAM222A* and AD-related regional brain atrophy. To understand its pathological role in AD, we investigated the protein encoded by *FAM222A* in patients with AD or transgenic mice for AD, and found its characteristic accumulation within the center of amyloid deposits. Further mechanistic study revealed that this protein could physically interact with A β and regulate A β aggregation and amyloid formation. Our results therefore identify a protein that likely plays an important role in amyloidosis, a finding providing perspective for AD pathogenesis.

Results

Susceptibility of regional brain atrophy to *FAM222A* in AD.

To identify brain atrophy-related imaging quantitative trait loci, we employed a genome-wide whole brain approach to analyze the imaging genetic dataset from the Alzheimer's Disease Neuroimaging Initiative (ADNI) (Supplementary Fig. 1a). After GWAS and the estimation of shared genetic contributions among 145 ROIs spanning the entire brain by linkage disequilibrium (LD) regression method¹⁴ (Supplementary Fig. 1b, c), we attempted to extract disease-related ROIs and detect genetic variants associated with them. With hierarchical clustering analysis on a genetic correlation network (Supplementary Fig. 1d–k), 16 modules of ROIs with high within-module genetic correlation were generated (Supplementary Fig. 1l, m). We further combined GWAS summary statistics of ROIs in each module using CPASSOC we developed¹³. Previously reported AD top markers, *APOE* single nucleotide polymorphism (SNP) rs429358¹⁵, *TOMM40* SNP rs2075650¹⁵, *APOC1* SNP rs12721051¹⁶, and rs117028417 on *FAM222A* were found in one module (Fig. 1, Supplementary Figs. 2, 3 and Supplementary Table 1), which consists of five ROIs including left hippocampus, right hippocampus, basal forebrain, entorhinal area, and planum polare, brain areas we know are affected by AD^{17–19} and well predict AD (Supplementary Fig. 4). SNP rs117028417 had a minor allele A (frequency = 0.044) with positive effects for all 5 ROIs in the ADNI cohort ($P = 1.95 \times 10^{-8}$ for CPASSOC analysis; Supplementary Table 2), and was further validated to be associated with the mean volume of hippocampus, one of the earliest affected brain regions in AD, in the Enhancing NeuroImaging Genetics through Meta-Analysis (ENIGMA) consortium cohort comprising MRI images of

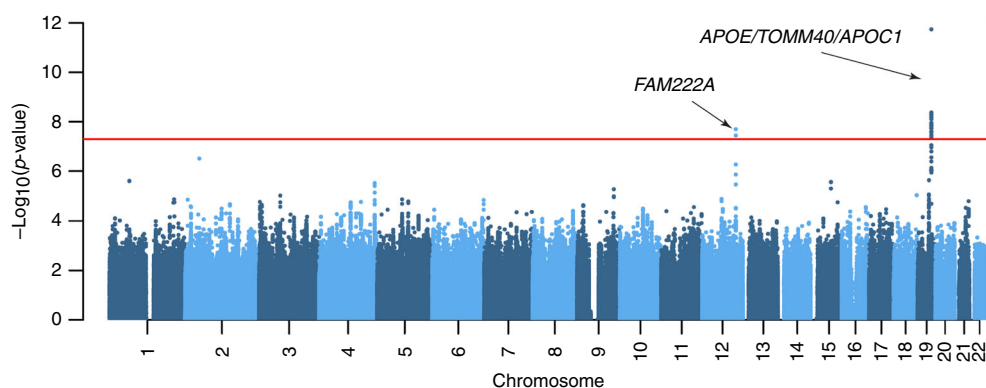


Fig. 1 CPASSOC analysis of the ADNI cohort. Manhattan plot of CPASSOC analysis combining GWAS summary statistics of ROIs in the green-colored module (Supplementary Fig. 1m) including left hippocampus, right hippocampus, basal forebrain, entorhinal area, and planum polare. The red line represents the threshold of $P = 5 \times 10^{-8}$ for the genome-wide significance level. Arrows indicate loci associated with regional brain atrophy. Source data are provided as a Source Data file (Source Data for GWAS in Fig. 1).

30,717 individuals from 50 cohorts²⁰ with the same effect direction ($\beta = 38.1$, $P = 8.29 \times 10^{-3}$; Supplementary Table 2).

On a genome-wide scale, *FAM222A* rs117028417 was only marginally associated with AD diagnosis in the International Genomics of Alzheimer's Project (I-GAP, $P = 0.052$)²¹. The positron emission tomography (PET) imaging using radiotracer ¹⁸F-Florbetapir (AV45) provides quantitative measures of amyloid pathology in vivo²². To investigate whether SNP rs117028417 is associated with brain A β accumulation, we performed single SNP association test of rs117028417 with AV45 standard uptake value ratio (SUVR) measures for brain regions available in the PET scan dataset from ADNI. The minor allele A of rs117028417 was found significantly associated with longitudinal decrease but not baseline of AV45 SUVR measures in anterior or posterior cingulate ($P < 0.0125$) (Supplementary Table 3), which is relatively consistent with the findings from brain volume associations, where the association direction was positive (i.e. higher volume). rs117028417 is located in an intergenic region that is approximately 5 kb downstream of *FAM222A* and 8 kb downstream of *TRPV4*. We searched among published GWAS studies of AD or AD-related biomarkers and did not identify common variants previously reported on these two genes. We thus further performed gene-based burden and SKAT tests^{23,24} of coding variants on both *FAM222A* and *TRPV4*. All of the coding variants on these two genes available in ADNI whole-genome sequencing data were low-frequency or rare variants with minor allele frequency less than 0.05 (Supplementary Table 4). *FAM222A*, but not *TRPV4*, displayed significant association with AV45 SUVR longitudinal changes in anterior or posterior cingulate or lateral parietal regions in the burden test after adjusting for 10 independent tests ($P < 0.005$) (Supplementary Table 5), collectively suggesting a possible role of *FAM222A* in brain amyloid deposition. However, when we tested rs117028417 for genetic association with AD cerebrospinal fluid (CSF) A β and tau biomarkers, only nominal association of rs117028417 with total tau annual change could be discovered, and there was no association with baseline CSF A β and tau on both single SNP association tests and variant burden tests (Supplementary Tables 6, 7), indicating that *FAM222A* variant may not have a strong genetic influence on AD biomarkers.

***FAM222A*-encoded protein accumulates within amyloid plaques.** The large independent AD brain imaging dataset including GWAS studies is not available at this time, making it difficult to further validate the genetic link between *FAM222A* and AD-related brain atrophy. However, to elucidate the possible pathological role of *FAM222A* in AD, we carried out experimental validation to focus on its encoded protein, which we designated as Aggregatin. Aggregatin consists of 452 amino acids with a predicted molecular weight of 47 kD, and has not yet been characterized. Using a well-characterized specific antibody against Aggregatin (Supplementary Fig. 5a–e), Aggregatin was found predominantly expressed in the central nervous system (CNS) including both the brain and the spinal cord, but not in other tissues such as heart, spleen, lung, kidney, or liver in mice or humans (Supplementary Fig. 5d, e). There was a slight increase in the expression of Aggregatin in brain lysates from AD patients compared to age-matched control subjects (Supplementary Fig. 5f–h). The most distinct pattern of Aggregatin immunostaining observed in AD was that Aggregatin was remarkably immunoreactive within the center of amyloid plaques, which were stained by the pan-A β antibodies 6E10 and 4G8, the N-terminal truncated and modified pyroglutamate A β species A β [N3pe] antibody 82E1, fibrillar A β dye thioflavin-S (Thio-S) or oligomer A β antibody NU-4²⁵ (Fig. 2a, b and Supplementary

Fig. 6a–e). In contrast, all control brain sections lacking detectable amyloid plaques demonstrated weak diffusive Aggregatin immunoreactivity without association with puncta (Fig. 2a).

Robust Aggregatin staining of the central core of amyloid deposits was consistently observed in the brains of multiple mouse models for AD including 5XFAD²⁶, TgCRND8²⁷, APP/PS1²⁸, Tg2576²⁹, and 3xTg³⁰ transgenic mice overexpressing human mutant APP along with or without human mutant PS1 (Fig. 2c, d and Supplementary Fig. 6f–h). With the exception of 5XFAD or Tg2576 mice in which Aggregatin-positive foci were connected with wispy fibrils, Aggregatin within amyloid deposits of other transgenic mice showed negligible projecting fibrillar structures, similar as in human plaques. Despite the general localization of Aggregatin large puncta to the core of amyloid deposits, they highly co-localized with A β in 5XFAD mice but not in AD patients or TgCRND8 mice, together indicating that the processes contributing to amyloid deposition may be different in human and different animal models. Notably, the formation of Aggregatin puncta occurred concurrently with amyloid deposition, but was not present in the pre-depositing young 5XFAD mice (Supplementary Fig. 6i). The characteristic Aggregatin-positive core staining was abolished by the pre-absorption of primary antibodies with human recombinant Aggregatin protein (rAggregatin) purified by combined 10 K dialysis and size-exclusion chromatography, but not A β _{1–42} peptides (Supplementary Fig. 7a), further validating the specificity of the anti-Aggregatin antibody. To confirm the presence of Aggregatin within amyloid deposits, we isolated amyloid cores purified by sucrose density gradient fractionation of 2% sodium dodecyl sulfate (SDS) homogenized AD or 5XFAD mouse brains. Dot blot and immunoblot studies of proteins under native and denatured forms respectively confirmed the existence of full-length Aggregatin without noticeable cleaved products in the SDS-resistant insoluble core-enriched fractions positive for 6E10 (Fig. 2e–h).

Aggregatin physically interacts with A β . The radio-immunoprecipitation assay buffer (RIPA) widely used for co-immunoprecipitation failed to extract Aggregatin from AD brains (Supplementary Fig. 7b), making it difficult to examine the likely association between Aggregatin and A β in AD. To overcome this obstacle, we performed in vitro pull-down assays using synthetic A β _{1–40} or A β _{1–42} and rAggregatin. Dynamic light scattering (DLS), circular dichroism (CD), and SDS-PAGE assays of rAggregatin indicated that rAggregatin existed in the soluble partially folded monomeric state (Supplementary Fig. 7c–e). Notably, rAggregatin co-precipitated with different forms of A β _{1–40} or A β _{1–42} (Fig. 3a and Supplementary Fig. 7f, g). Consistently, immobilized monomeric A β _{1–40} or A β _{1–42} was also able to pull down rAggregatin (Supplementary Fig. 7h). Further surface binding affinity assays revealed that immobilized A β _{1–40} or A β _{1–42} bound to rAggregatin, and similarly, immobilized rAggregatin bound to A β _{1–40} or A β _{1–42} all within the nanomolar ranges (Fig. 3b, c and Supplementary Fig. 7i, j). In agreement with these results, surface plasmon resonance (SPR) measurements confirmed that A β _{1–42} bound to immobilized rAggregatin at the low nanomolar dissociation equilibrium constant (K_d) (Fig. 3d). Although no measurement was noted in blank or BSA-immobilized sensor chips (Supplementary Fig. 7k), signal spikes produced in the SPR assays may be in proportion to the mass of A β aggregates, making dynamic measurements unlikely consistent with the surface binding affinity assessments at the steady state. To investigate the binding of rAggregatin to A β ex vivo, we performed an in situ binding assay in which fixed brain sections of AD patients or 5XFAD mice were incubated with Flag-tagged rAggregatin and

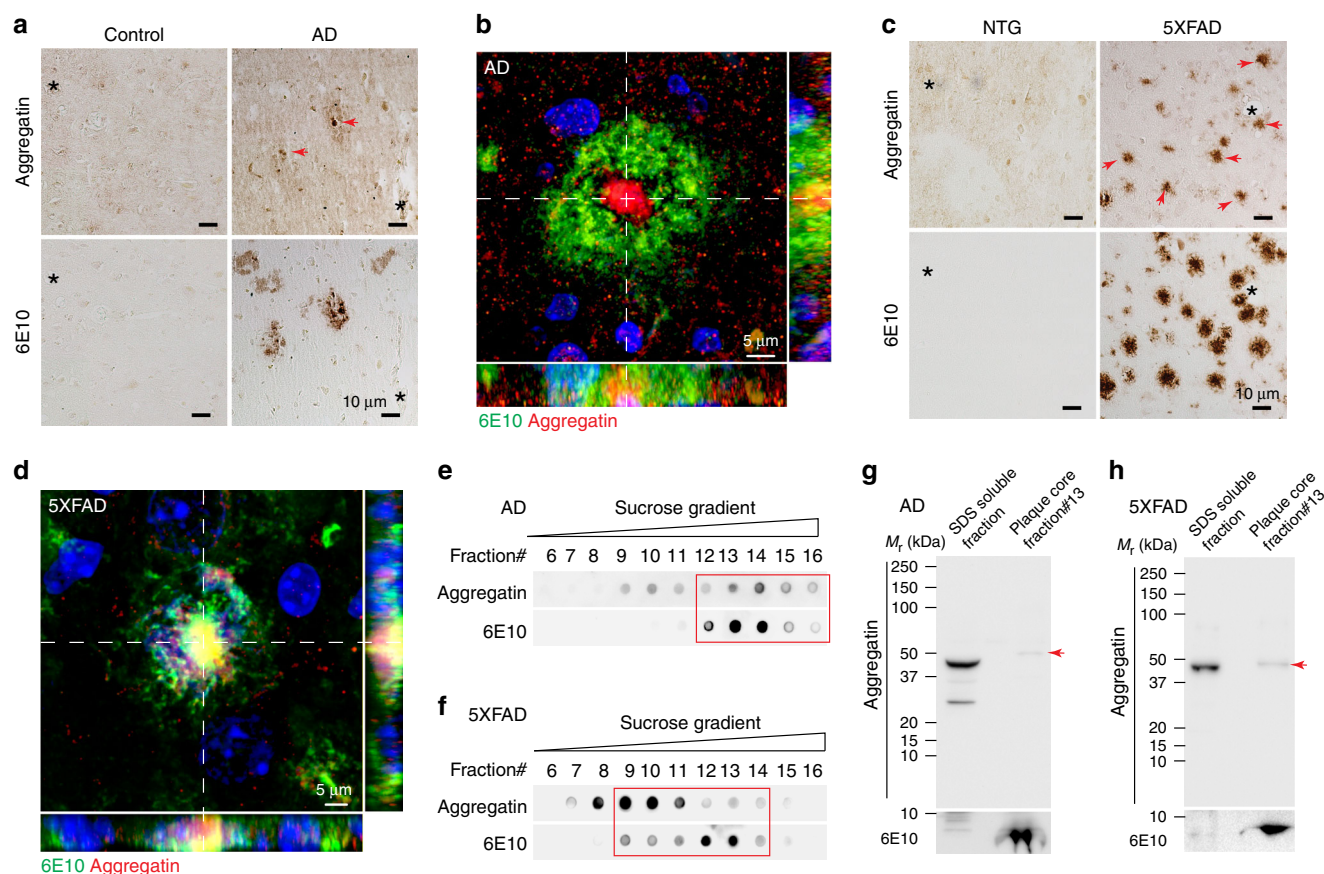


Fig. 2 Aggregatin accumulates within the center of amyloid deposits. **a** Representative images of immunohistochemistry of Aggregatin (arrowheads) and amyloid plaques (stained by the 6E10 antibody) in adjacent sections (denoted by asterisks) of cortices of sporadic AD patients. **b** Representative fluorescent images of Aggregatin (Red), amyloid plaques (Green, stained by the 6E10 antibody) and DAPI nuclei staining (Blue) in cortices of sporadic AD. **c** Representative images of immunohistochemistry of Aggregatin (arrowheads) and amyloid plaques (stained by the 6E10 antibody) in adjacent sections (denoted by asterisks) of brains of 6-month-old 5XFAD mice. **d** Representative images of Aggregatin (Red), amyloid plaques (Green, stained by the 6E10 antibody) and DAPI nuclei staining (Blue) in brains of 6-month-old 5XFAD mice. **e, f** Representative dot blots of Aggregatin and A β (6E10) in serial fractions of amyloid plaques separated by differential centrifugation in sucrose gradient from sporadic AD patients (**e**) or 6-month-old 5XFAD mice (**f**). **g, h** Representative immunoblots of Aggregatin and A β (6E10) in the SDS-resistant insoluble core-enriched fraction from sporadic AD patients (**g**) or 6-month-old 5XFAD mice (**h**). Arrow heads point Aggregatin. Due to the presence of urea used for plaque core protein extraction, plaque core fractions show slight shifts compared to SDS soluble fraction. All experiments were independently performed at least three times. Source data are provided as a Source Data file (Source Data for Statistics and Blots).

stained by an anti-Flag antibody. Remarkably, all amyloid deposits were labelled by rAggregatin (Supplementary Fig. 7l–n). Considering the widespread presence of A β in brains, it was not surprising that brain sections also showed background staining after rAggregatin incubation. Notably, amyloid deposits and the background binding of rAggregatin were completely abolished by pre-incubation of rAggregatin with A β_{1-40} or A β_{1-42} (Supplementary Fig. 7l–n), confirming that rAggregatin binds amyloid deposits by interacting with A β . Collectively, these results highlight the pathological relevance of Aggregatin in AD, and show that Aggregatin is a A β binding protein with high-affinity.

Aggregatin binds to A β via its N-terminal region. Next, we generated a series of rAggregatin deletion mutants to map the binding region for A β . Although rAggregatin alone does not form oligomers or aggregates, the composition of A β preparations at the micromolar range quickly changes over time due to the formation of higher order oligomers, which are expected to influence the Aggregatin and A β interaction. To quantitatively identify the binding strength of different rAggregatin deletion mutants, the in situ binding assay rather than pull-down assay was used for the binding motif mapping. The deletion of residues from 1 to 80

(designated as NABD, N-terminal A β binding domain), but not residues outside of this region, was found to greatly reduce the binding of rAggregatin to amyloid deposits (Fig. 3e–g and Supplementary Fig. 8a, b). Recombinant NABD (rNABD) alone was able to bind to amyloid deposits or A β_{1-42} similar as full-length rAggregatin, and caused a dose-dependent decrease in the association between rAggregatin and amyloid deposits when co-incubated (Fig. 3b, c, e–g and Supplementary Fig. 8c, d), together suggesting NABD as the domain both necessary and sufficient for A β binding. The residues from 61 to 80 appear to be a core motif for NABD though they alone were not sufficient to bind amyloid deposits (Fig. 3e–g and Supplementary Fig. 8a, b). Notably, rNABD bound amyloid deposits in a length-dependent manner, and rAggregatin with partial deletions of every 5 amino acids within the core motif of NABD exhibited weaker but still strong interactions with amyloid deposits (Supplementary Fig. 8a, b), further indicating that NABD may contain multiple sites cooperatively involved in A β binding.

Aggregatin cross-seeds A β via direct binding. Given the strong interaction between Aggregatin and A β , we further set out to determine whether Aggregatin would influence the A β

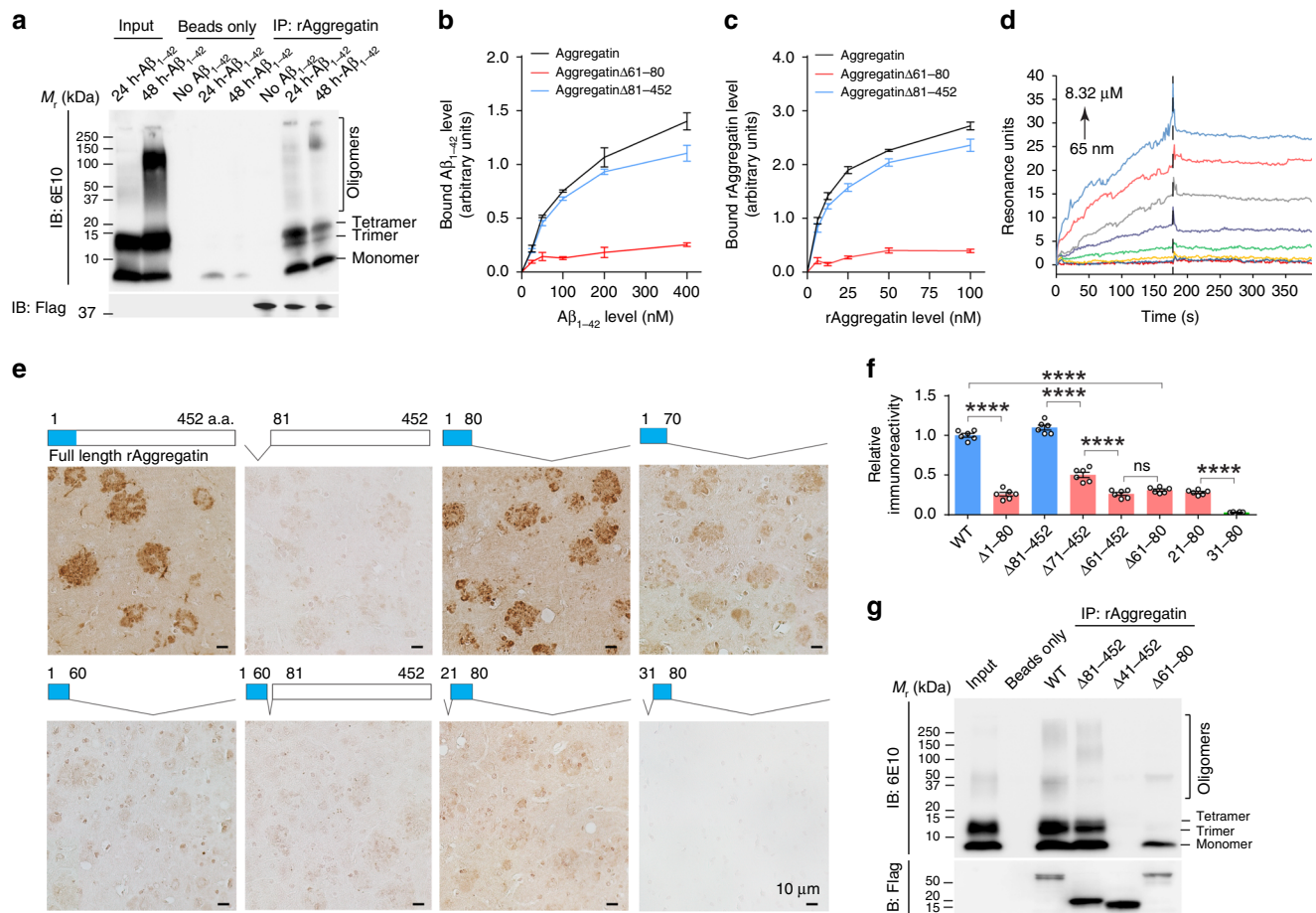


Fig. 3 Aggregatin interacts with $A\beta$. **a** Coimmunoprecipitation of purified Flag-tagged rAggregatin and $A\beta_{1-42}$ (pre-aggregated in vitro for 24 or 48 h). rAggregatin was immunoprecipitated using streptavidin magnetic beads and immunoblotted using the antibody to Flag. **b** Measurement of $A\beta_{1-42}$ levels bound to immobilized rAggregatin (normalized to maximal rAggregatin and $A\beta_{1-42}$ binding). $n = 3$ independent experiments. **c** Measurement of rAggregatin levels bound to immobilized $A\beta_{1-42}$ (normalized to maximal rAggregatin and $A\beta_{1-42}$ binding). $n = 3$ independent experiments. **d** Bio-layer interferometry measurement of the binding kinetics of monomeric $A\beta_{1-42}$ to immobilized rAggregatin. Curves are corresponded to $A\beta_{1-42}$ at 8320, 4160, 2080, 1040, 520, 260, 130 and 65 nM from the top to bottom. **e, f** Representative immunohistochemistry (**e**) and quantification (**f**) of rAggregatin immunoreactivity (Flag antibody) in 5XFAD mouse brain sections after incubation with 100 nM indicated rAggregatin deletion mutants ($n = 6$ independent experiments in each group). Blocks with blue color on the top of each immunohistochemistry image show NABD. **g** Coimmunoprecipitation analysis of purified Flag-tagged rAggregatin deletion mutations and $A\beta_{1-42}$ using streptavidin magnetic beads. Source data are provided as a Source Data file (Source Data for Statistics and Blots). Data are means \pm s.e.m (\pm is the plus-minus sign). One-way analysis of variance (ANOVA) followed by Tukey's multiple comparison test. **** $P < 0.0001$. ns, non-significant.

aggregation process. $A\beta$ aggregation kinetics were first monitored in vitro using $A\beta_{1-40}$ or $A\beta_{1-42}$ for the thioflavin T (ThT) based fluorescence assay. As illustrated by changes in ThT-associated fluorescence, $A\beta$ self-aggregated only at high concentrations whereas rAggregatin alone did not produce any observable aggregate (Fig. 4a and Supplementary Fig. 9a). Remarkably, once co-incubated with rAggregatin, $A\beta$ was able to form aggregates at low concentrations even in the nanomolar range (Fig. 4a, b and Supplementary Fig. 9a–c). With increasing concentrations of rAggregatin, the lag times of the aggregation reaction were greatly decreased (Fig. 4a and Supplementary Fig. 9b). As a control, rAggregatin Δ 61–80 had similar folding as wild type rAggregatin, but failed to induce $A\beta_{1-42}$ aggregation (Fig. 4a and Supplementary Fig. 7d, e). These observations were confirmed using immunoblot and dot blot analyses for $A\beta$ aggregation measurements under denatured and native conditions, which showed that Aggregatin but not rAggregatin Δ 61–80 indeed promoted $A\beta_{1-42}$ oligomerization (Fig. 4c–f and Supplementary Fig. 9d). Of note, due to the sensitivity of immunoblot, $A\beta$ oligomer was only detectable with long exposure when $A\beta_{1-42}$ at the low micromolar

but not nanomolar was applied. Consistently, transmission electron microscopy analyses revealed that soluble $A\beta_{1-42}$ protofibrils³¹ were more abundant and have more complicated structures in the presence of rAggregatin during the early phase of incubation when $A\beta$ fibrils were absent (Fig. 4g). As expected, the low concentration of $A\beta_{1-42}$ only yielded very few short and un-branched fibrils after long periods of incubation under negative staining (Fig. 4g), and rAggregatin alone did not form identifiable particles or large aggregates (Supplementary Fig. 9e). Strikingly, co-incubation of low micromolar $A\beta_{1-42}$ with rAggregatin lead to the formation of large micrometer-long branched fibrils (Fig. 4g and Supplementary Fig. 9f), which were Thio-S-positive and visible under the fluorescent microscopy (Fig. 4h). Taken together, these data imply Aggregatin as a potent seeding factor for $A\beta$ oligomerization and aggregation.

Aggregatin regulates amyloid deposition. $A\beta$ levels are low in young especially predepositing 5XFAD mice²⁶. To examine the effect of extracellular Aggregatin on amyloid deposition with

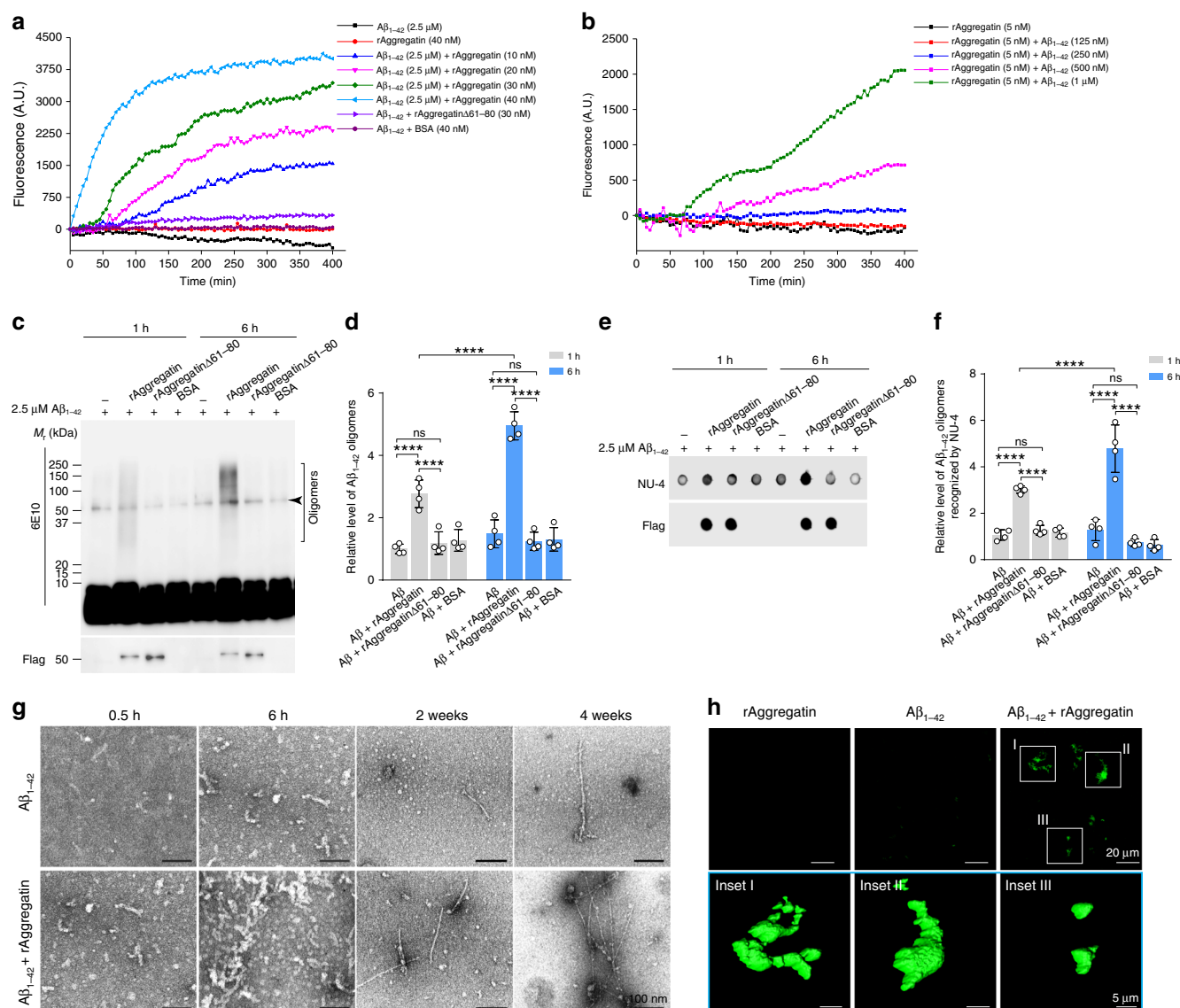


Fig. 4 Aggregatin accelerates A β aggregation in vitro. **a** ThT-based assay measuring aggregation kinetics of 2.5 μ M A β_{1-42} in the presence of various concentrations of rAggregatin ($n = 5$ independent experiments in each time points). **b** ThT-based assay measuring aggregation kinetics of various concentrations of A β_{1-42} in the presence of 5 nM rAggregatin ($n = 5$ independent experiments in each time points). **c**, **d** Representative immunoblot (**c**, light exposure shown in Fig. S9d) and quantification (**d**) of A β_{1-42} oligomers recognized by 6E10 in the 30 nM rAggregatin and 2.5 μ M A β_{1-42} mixture collected after 6-h co-incubation ($n = 4$ independent experiments). Arrow head points to non-specific bands due to long exposure. **e**, **f** Representative dot blot (**e**) and quantification (**f**) of A β_{1-42} oligomers recognized by the oligomer A β specific antibody NU-4 in the 30 nM rAggregatin and 2.5 μ M A β_{1-42} mixture collected after 6-hour co-incubation ($n = 4$ independent experiments). **g** Negative staining electron microscopy of 2.5 μ M A β_{1-42} aggregates after 0.5-h, 6-h, 2-week, and 4-week co-incubation with or without 30 nM rAggregatin. **h** Representative 3D images of 2.5 μ M A β_{1-42} aggregates stained by Thio-S after 4-week co-incubation with or without 30 nM rAggregatin. Source data are provided as a Source Data file (Source Data for Statistics and Blots). Data are means \pm s.e.m. One-way analysis of variance (ANOVA) followed by Tukey's multiple comparison test. **** $P < 0.0001$. ns, non-significant.

unrestricted access to predeposited-state A β , we performed intracerebroventricular (ICV) infusion of Flag-tagged rAggregatin or rAggregatin Δ 61–80 into 5XFAD mice at 4-month-old, when A β rises to high levels²⁶ (Supplementary Fig. 10a). Infusion did not cause the death of mice or histological abnormalities in the brain. Importantly, the levels of total A β , APP or BACE1 remained unchanged 4 weeks after rAggregatin infusion, indicating that rAggregatin did not affect A β production or degradation (Supplementary Fig. 10b, c). ICV infused rAggregatin was detected in amyloid deposit (Fig. 5a). Remarkably, compared to age-matched control mice infused with artificial cerebrospinal fluid (aCSF), rAggregatin-infused mice showed greatly increased amyloid deposition spreading the brain at 5 months of age, which could be

completely blocked by the deletion of NABD core motif (Fig. 5b, c and Supplementary Fig. 10d, e). As prominent AD pathological features, microgliosis and astrogliosis are closely associated with amyloid deposits in 5XFAD mice^{26,32}. Corresponding to increased plaque load, 5XFAD mice infused with rAggregatin but not rAggregatin Δ 61–80 exhibited more microgliosis and astrogliosis compared to aCSF-infused control 5XFAD mice (Fig. 5d and Supplementary Fig. 10f). 5XFAD mice begin to show cognitive deficits at around 4-months-old^{33,34}. Compared with NTG mice, FAD mice exhibited significantly impaired Y-maze and Barnes-maze performance, both of which were significantly exacerbated in transgenic mice with rAggregatin but not rAggregatin Δ 61–80 infusion (Fig. 5e, f). To further examine the role of neuronal

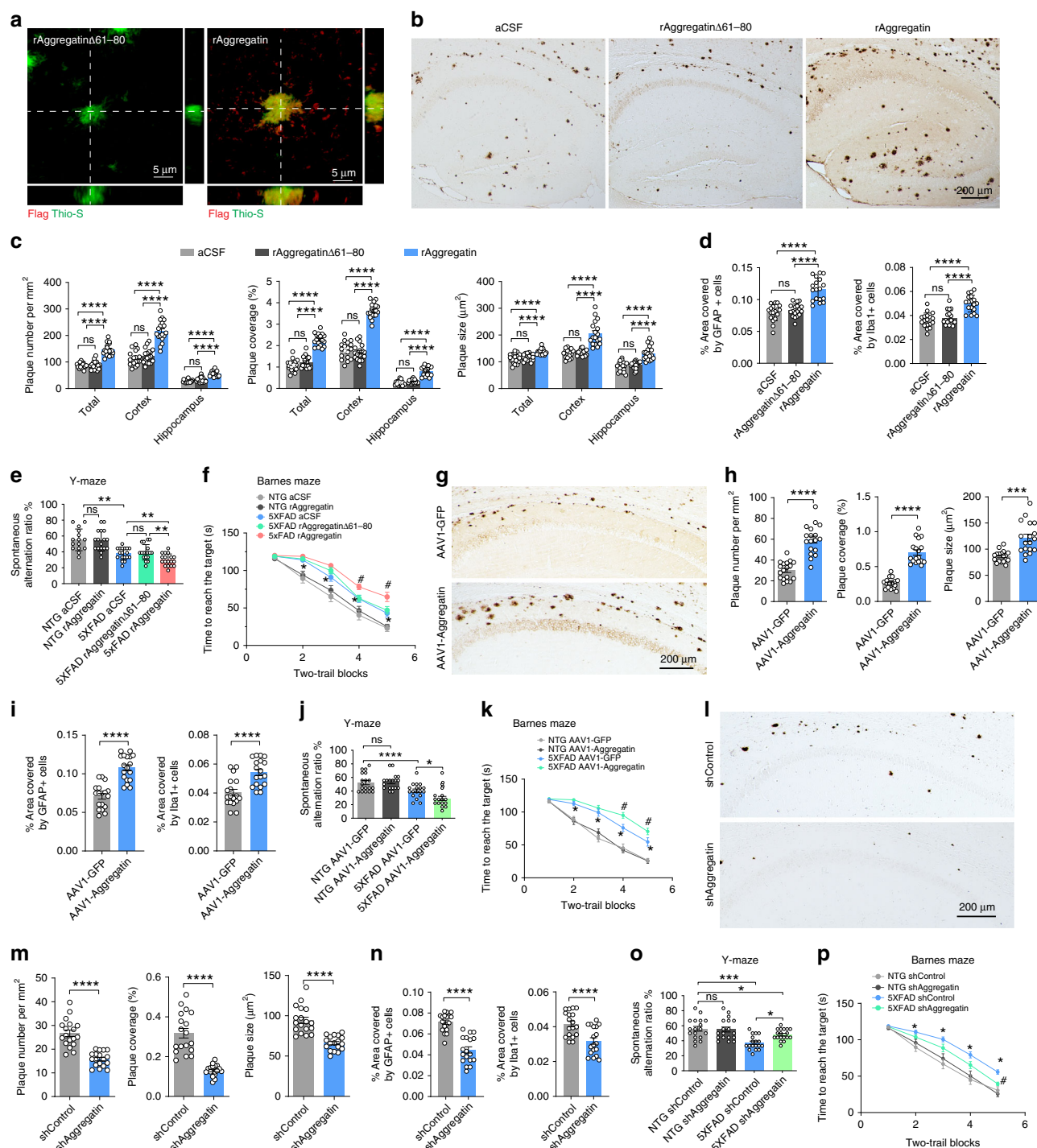


Fig. 5 Aggregatin regulates amyloid deposits. 5-month-old 5xFAD mice were ICV infused with Flag-tagged rAggregatin Δ 61–80 or rAggregatin for 4 weeks. **a** Representative images of Flag-tagged Aggregatin (Red) and amyloid plaques (Green, Thio-S) in the brain. **b, c** Representative images (**b**) and quantification (**c**) of plaque by NU-4 antibody in the total brain (Total), cortex or hippocampus ($n = 18$ mice in each group). **d** Quantification of astroglia and microglia in hippocampus (representative images shown in Supplementary Fig. 10f). **e, f** Y-maze (**e**) and Barnes maze (**f**) performance ($n = 15, 17, 18, 18$, and 18 mice for NTG aCSF, NTG rAggregatin, 5xFAD aCSF, 5xFAD rAggregatin Δ 61–80, and 5xFAD rAggregatin respectively). 5-month-old 5xFAD mice were injected with AAV1-GFP or AAV1-Aggregatin at 1.5 month-old. **g, h** Representative images (**g**) and quantification (**h**) of plaques stained by NU-4 in the hippocampus ($n = 18$ mice in each group). **i** Quantification of astroglia and microglia in the hippocampus ($n = 18$ mice in each group). **j, k** Y-maze (**j**) and Barnes maze (**k**) performance ($n = 18$ mice in each group). Representative images are shown in Supplementary Fig. 11g. 5-month-old 5xFAD mice were injected with AAV1-shControl or AAV1-shAggregatin at 1.5-month-old. **l, m** Representative images (**h**) and quantification (**i**) of plaques stained by NU-4 in the hippocampus ($n = 18$ mice in each group). **n** Quantification of astroglia and microglia in the hippocampus ($n = 18$ mice in each group). Representative images are shown in Supplementary Fig. 12f. **o, p** Y-maze (**o**) and Barnes maze (**p**) performance ($n = 18$ mice in each group). Source data are provided as a Source Data file (Source Data for Statistics and Blots). Data are means \pm s.e.m. Student's t -test or one and two-way analysis of variance (ANOVA) followed by Tukey's multiple comparison test. * $P < 0.05$, ** $P < 0.01$, *** $P < 0.001$, **** $P < 0.0001$. ns, non-significant.

Aggregatin in amyloid deposition, we injected adeno-associated virus serotype 1 encoding human Aggregatin or GFP alone under the neuron specific promoter *eSYN* (AAV1-Aggregatin or AAV1-GFP) into the hippocampus CA1 of young predepositing 5XFAD mice at 1.5-month-old (Supplementary Fig. 11a). When analyzed at 5 months of age, in line with ICV infusion experiments, intra-hippocampal injection of AAV1-Aggregatin significantly increased amyloid deposition without any effect on total A β levels in the GFP-positive hippocampal region, but not in the brain areas without AAV1-Aggregatin delivery (Fig. 5g, h and Supplementary Fig. 11b–f), together suggesting that Aggregatin is sufficient to enhance amyloid deposition *in vivo*. Consistently, amyloid deposition associated microgliosis, astrogliosis, and cognitive deficits were also worsened by neuronal Aggregatin overexpression (Fig. 5i–k and Supplementary Fig. 11g). To investigate whether Aggregatin was required for amyloid deposition, we performed intrahippocampal injection of AAV1 co-expressing GFP and a short hairpin RNA targeting Aggregatin (AAV1-shAggregatin) or control shRNAi (AAV1-shControl) in predepositing 5XFAD mice (Supplementary Fig. 5b, c). It was observed that decreasing Aggregatin was not associated with neuronal loss or altered total A β (Supplementary Fig. 12a). At 5 months of age, the injection of AAV1-shAggregatin significantly alleviated amyloid deposition in the GFP-positive areas of hippocampus compared to AAV1-shControl injection, but not in the GFP-negative brain areas (Fig. 5l, m and Supplementary Fig. 12b–e). Likewise, Aggregatin reduction significantly alleviated amyloid deposit associated microgliosis, astrogliosis, and cognitive impairment (Fig. 5n–p and Supplementary Fig. 12f). Taken together, these results further imply that Aggregatin is also an important factor necessary for amyloid deposition.

Discussion

Here, we report on Aggregatin, the protein encoded by *FAM222A*, as a plaque core protein directly binding A β and facilitating A β aggregation, a process thought to be central in AD onset. Therefore, this work provides strong experimental evidence supporting a pathophysiological role for Aggregatin in AD.

In people diagnosed with AD or mild cognitive impairment (MCI), a proportion of whom can progress to AD, *FAM222A* is associated with the module enriched for atrophy in AD-affected brain regions. *FAM222A* association with hippocampal volume could be validated in the replication ENIGMA cohort, together pointing to a potential mechanism by which *FAM222A* may affect regional brain atrophy. Notably, our cross phenotype association analysis also led to the identification of long-established AD risk genes *APOE*, *TOMM40*, and *APOC1* exclusively in the same module, suggesting possible genetic interplays between *FAM222A* and AD risk genes. Interestingly, although we only discovered marginal association between rs117028417 and AD diagnosis, *FAM222A*, but not the nearby gene *TRPB4*, was found significantly associated with longitudinal increase of brain amyloid deposition. Along this line, as AD is a genetically complex and multifactorial disease with different etiological subtypes, *FAM222A* variants or pathogenic mutations strongly associated with AD may be present in subsets of AD patients. Nevertheless, although our genetic discovery study did not observe a strong influence of *FAM222* variant on AD risk and biomarkers, the module enriched for *FAM222A* and previously reported AD risk variants likely represents a statistical AD-specific cluster worthy of further investigation using independent AD neuroimaging databases.

Due to the limited sample size, only a slight, but not significant increase of Aggregatin mRNA level was observed in AD cortices collected in our laboratory (Supplementary Fig. 13a, b). However, analysis of previously published microarray data of the Mount

Sinai Brain Bank (MSBB) cohort³⁵ found significantly increased levels of Aggregatin mRNA in many brain regions especially cortices of AD, which were also tested to be associated with AD neuropathologies (Supplementary Fig. 13c, d and Supplementary Tables 8, 9). DNA methylation is one of several epigenetic mechanisms regulating gene expression³⁶ and has been implicated in AD³⁷. Interestingly, several methylation sites on *FAM222A* associated with AD could be identified (Supplementary Fig. 14 and Supplementary Table 10), indicating the likely involvement of *FAM222A* in AD pathogenesis through epigenetic regulation of its gene expression. Considering Aggregatin mRNA levels were usually measured at one time-point, future studies may be interesting to investigate longitudinal changes of Aggregatin gene expression and their relationship with neuropathologies during the progression of disease. While the relationship between *FAM222A* DNA methylation, transcription, translation, and posttranslational modification remains to be determined, these interesting findings provide further genetic evidence supporting the association of *FAM222A* to AD.

Consistent with the genetic association of *FAM222A* with longitudinal brain A β deposition, pathologically accumulated Aggregatin, the protein encoded by *FAM222A*, is readily noted in plaques in AD and amyloid deposits in multiple APP transgenic mice, strongly illustrating the pathological function of Aggregatin. Of note, there are remarkable differences in the morphology of Aggregatin puncta and their co-localization with A β . Similarly, as plaques in AD patients are more complex structures than amyloid deposits in APP transgenic mice³⁸, it could be expected that Aggregatin is also present differentially in amyloid core-enriched fractions from AD patients and 5XFAD mice. A number of explanations may account for the discrepancy regarding the pattern of Aggregatin puncta or presence of Aggregatin in plaques, including but not limited to differences in disease stages, the effects of A β clearance and degradation pathways or the length of time spent for plaque deposition. This notion is indeed supported by the observation that while only one or several condensed Aggregatin foci were present in single plaque in AD, amyloid deposits in cortex from patients with Down's syndrome (DS), a complex genetic abnormality developing AD-like pathology, were largely associated with multiple foci (Supplementary Fig. 15).

It is still unclear how Aggregatin becomes accumulated within the center of plaques without the ability for self-aggregation. Aggregatin appears to bind A β _{1–40} and A β _{1–42} with different affinities. Along this line, amyloid plaques are made up of different N or C-terminally truncated and modified A β species³⁹. Interestingly, we found that Aggregatin was present in exosomes (Supplementary Fig. 16). Although Aggregatin has no signal sequence and is not predicted to be secreted, this data supports the possibility that Aggregatin can be exported into the interstitial fluid. Of note, the presence of exogenously expressed Aggregatin in exosomes of cultured cells is physiologic. There may be other mechanisms responsible for Aggregatin secretion under pathological conditions. As Aggregatin protein levels were upregulated in AD, there may be a complex interplay among A β specific forms, Aggregatin expression, post-translational modification, extracellular secretion, and other unknown factors responsible for this. Nevertheless, on the basis of the facts that Aggregatin puncta appear concurrently with amyloid plaques and does not exist in the predepositing mice, Aggregatin should accumulate in plaques before or concurrent with rather than after the well formation of plaques. Aggregatin did not form intraneuronal accumulation in AD patients and 5XFAD mice. Not surprisingly, we did not observe the presence of Aggregatin puncta in neurons bearing neurofibrillary tangles (Supplementary Fig. 17a). Along this line, intraneuronal APP and/or A β immunoreactivity assessed by 6E10 was not changed by Aggregatin in 5XFAD mice. Therefore,

Aggregatin may not be involved in intraneuronal protein aggregation. Noteworthy, Aggregatin does not physically interact with tau and other previously reported plaque-associated proteins such as α -synuclein and APOE (Supplementary Fig. 17b–d), further implicating the likely specific link between Aggregatin and A β . However, as AD is a multifactorial disease, further detailed investigation will still be needed to determine the spatiotemporal relationship between Aggregatin and other AD-related pathologies especially considering the presence of Aggregatin immunoreactivity outside of plaques.

Aggregatin facilitates A β aggregation in vitro although it is not clear whether Aggregatin influences the primary or secondary nucleation. Increasing Aggregatin enhances, whereas reduced Aggregatin suppresses amyloid deposition and associated neuroinflammation and cognitive deficits. Of note, in addition to exacerbate A β pathology in adult 5XFAD mice, Aggregatin infusion causes further amyloid deposition in aged 5XFAD mice when amyloid deposit size and number largely plateau (Supplementary Fig. 18). Therefore, Aggregatin is likely an unrecognized co- or even limiting factor both necessary and sufficient for A β aggregating into the fibrils to form plaques. Although the bioinformatics analysis of Aggregatin amino acid sequence reveals that Aggregatin does not contain any known conserved functional motifs, our CD characterization of Aggregatin indicated it as at least a partially folded protein containing α -helix, β -sheet, and intrinsically disordered element(s) (Supplementary Fig. 7e). While the structure and physiological function of Aggregatin is still under investigation, we found that Aggregatin was exclusively expressed in the CNS. The substantial loss of Aggregatin in hippocampus does not cause neuronal death, suggesting that Aggregatin may not be vital for neuronal survival. Future studies may be feasible to generate mice with global or neuronal specific deletion of Aggregatin to test whether the knockout of Aggregatin is sufficient to completely abolish amyloid deposition and further validate the pathological role of Aggregatin in amyloid plaque formation and disease progression.

The genetic inhibition of Aggregatin–A β interaction was able to suppress Aggregatin-induced A β aggregation or amyloid deposits, suggesting that Aggregatin should directly interact with A β to regulate its pathology. Of note, although rNABD (i.e. Aggregatin 1–80 or Aggregatin Δ 81–452) alone is able to bind A β , it does not induce A β _{1–42} aggregation or promote amyloid deposits (Supplementary Fig. 19), suggesting that the C-terminal fragment is also required for Aggregatin-induced A β aggregation and plaque formation. The exact mechanism for Aggregatin-mediated A β aggregation is still under investigation. Noteworthy, likely due to the high A β binding affinity of Aggregatin, the specific anti-Aggregatin antibody used in this study does not dissociate the Aggregatin–A β interaction or prevent Aggregatin-induced aggregation of A β , and likewise, ICV infusion of the specific anti-Aggregatin antibody failed to alleviate A β pathologies in 5XFAD mice. Thus, the Aggregatin targeted immunotherapy for AD may require the generation of high-affinity monoclonal antibodies. The genetic manipulation or infusion of Aggregatin did not change APP or A β levels, suggesting that Aggregatin is unlikely involved in A β production or degradation. However, even though Aggregatin large puncta do not overlap with neurons, microglia or astrocytes, our results cannot rule out the possibility that Aggregatin may regulate amyloidosis indirectly through neuronal function or microglial or astrocytic Aggregatin, which is also worthy of further clarification. APOE4 is the strongest genetic risk factor for LOAD. Although the involvement of APOE in A β metabolism might complicate the interpretation of data⁴⁰, future studies will also be interesting to investigate Aggregatin-mediated amyloidosis in vivo on the human ApoE knock-in or ApoE knockout background as previously reported⁴¹.

In conclusion, we have reported FAM222A as a likely gene associated with AD-related regional brain atrophy, which encodes an amyloid plaque core protein pathologically involved in A β assembly and amyloid deposition. Our findings therefore not only inform future genetic studies of FAM222A, but also encourage detailed pathophysiological investigation of its encoded Aggregatin for AD and related dementia.

Methods

Samples, genotyping, and imputation. Data used in the preparation of this article were obtained from the ADNI database (<http://www.loni.ucla.edu/ADNI>). The Illumina SNP genotyping data, demographic information, APOE genotype and baseline diagnosis information from 754 ADNI-1 participants, including 213 cognitive normal individual controls, 175 AD patients, and 366 patients with mild cognitive impairment (MCI) were downloaded from ADNI database. All participants provided written informed consent and study protocols were approved by participating sites' Institutional Review Board.

SNP genotyping of 620,901 markers on ADNI-1 participants were generated using Illumina BeadStudio 3.2 software from bead intensity data. All SNP genotypes are publicly available for download at the ADNI website. For genotype imputation analysis, only SNPs fulfilling the following criteria were included (1) per-SNP call rate ≥ 0.98 ; (2) minor allele frequency (MAF) ≥ 0.01 ; (3) P -value for Hardy–Weinberg equilibrium (HWE) $\geq 10^{-6}$ in our sample set. Imputation was performed using the software MACH-ADMIX⁴² using the 1000 Genomes Project Phase 3 V.5 (<http://www.internationalgenome.org>) as a reference panel. We excluded SNPs with $R^2 < 0.3$, MAF < 0.01 and all INDELS from the imputed genotype data to obtain genotypes for 7,512,167 SNPs for subsequent association analyses.

MRI analysis and extraction of imaging phenotypes. Dr. Christos Davatzikos' group from University of Pennsylvania analyzed the baseline MRI T1 scans of ADNI1 participants and generated the 145 ROIs spanning the entire brain by using the Multi-atlas region Segmentation (MUSE) framework⁴³. In this framework, multiple atlases with semi-automatically extracted ground-truth ROI labels were first warped individually to the target image using non-linear registration methods^{44,45}. To fuse the ensemble into a final segmentation, they adopted a spatial adaptive weighted voting strategy, in which a local similarity term was used for ranking and weighting ground truth labels from different atlases and an image intensity based term was used for modulating the segmentations at the boundaries of the ROIs according to the intensity profile of the subject image⁴³. In validation experiments, the multi-atlas approach was showed to achieve significantly higher accuracy in comparison to single-atlas based segmentation⁴³. In this study, we downloaded the volume measures of ROIs from ADNI.

ROI-wise genome-wide association analysis in ADNI1. Autosomal chromosome SNP associations for volumes from 145 ROIs spanning whole brain were assessed by linear regression under the assumption of an additive genetic model. All models were adjusted for age, gender, education, handedness and 3 principal components to control population stratification. The genomic control for 145 GWASs ranged between 0.98 to 1.02.

Genetic correlation network analysis of brain ROIs in ADNI1. In multivariate quantitative genetics, a genetic correlation (r_g) is the proportion of variance that two traits share due to additive genetic effects, which estimates the degree of pleiotropy or causal overlap^{12,14,46}. The cross phenotype association analysis (CPASSOC) is a method proposed to integrate association evidence of multiple traits from multiple GWAS and detect cross-phenotype associations¹³. Thus, CPASSOC analysis of genetic correlated AD-related brain imaging traits could improve power to identify genetic variants associated with multiple AD-imaging traits. To identify groups of highly genetic correlated ROIs, we used the estimated pairwise ROI genetic correlations to define the brain genetic correlation network. In this network, nodes are brain ROIs while edges are estimated genetic correlations between ROIs. To extract modules from this network, we adopted a weighted gene co-expression network analysis (WGCNA) framework and used the method of topological overlap matrix (TOM) elements in hierarchical clustering to identify modular structures⁴⁷. A flowchart for constructing a ROI genetic correlation network, extracting network modules and identifying genetic variants associated with modules using CPASSOC is presented in Supplementary Fig. 1a.

Pairwise ROI genetic correlations were estimated by the technique of cross-trait LD score regression method¹⁴ using the GWAS summary statistics of ROIs. For 10,400 pairs among 145 ROIs, genetic correlations were not correctly estimated for 3,255 pairs because the estimated values were either “NA”, above 1 or below –1, which might be driven by the small sample size, and these pairs were then filtered out. However, this filter may reduce power to identify variants associated with ROIs. The pairwise genetic correlations are presented in Supplementary Fig. 1 and we observed high genetic correlations among the ROIs.

We used the ROI genetic correlation matrix and power adjacency function⁴⁷ to generate network adjacent matrix:

$$a_{ij} = |r_{gij}|^\beta \quad (1)$$

while r_{gij} is the genetic correlation between nodes ROI i and ROI j , and a_{ij} is the connection strength between two nodes.

To choose the parameter β and genetic correlation P -value threshold, we used the scale-free network model to construct an image network. The scale-free network assumes that most nodes in a network are sparsely connected with the exception of a few hub nodes that are densely connected with other nodes⁴⁸. In the scale-free network models, more connections are likely to occur for those hub nodes with already-high connectivity, which meet biological criteria^{47,48}. We used the power law $p(k) \sim k^{-\gamma}$ to estimate the scale-free property, where k is the connectivity for each node and equals the number of its direct connections to other node. To generate the network, we assessed different power adjacency function parameter $\beta = 2, 4, 6$ and 8 and filtered the genetic correlation with different genetic correlation (r_g) P -value thresholds of $0.5, 0.3, 0.2$ and 0.1 . For each P -value threshold, if the estimated genetic correlation P -value was larger than that, we set the genetic correlation to be 0 . Using the four thresholds, we generated different networks for $\beta = 2, 4, 6$ and 8 and accessed their corresponding scale-free topology using linear regression model fitting index R^2 between $\log_{10}(p(k))$ and $\log_{10}(k)$ for all nodes. We observed that a P -value threshold of 0.2 with $\beta = 6$ corresponded a network with the scale-free topology and had the largest R^2 of 0.61 . The histogram of connectivity k and scale-free topology plots for networks with $\beta = 6$ and different P -value threshold were showed in Supplementary Fig. 2. Thus, we used the network adjacent matrix generated under this criterion for further analysis. In this network, 40 out of 145 ROIs had k equal to 0 and 105 ROIs were carried out in module identification analysis.

We adopted the methods introduced by WGCNA framework⁴⁷ to identify network modules. The adjacent matrix was transformed into a topological overlap matrix (TOM) with element defined as

$$w_{ij} = \frac{l_{ij} + a_{ij}}{\min\{k_i, k_j\} + 1 - a_{ij}} \quad (2)$$

where $l_{ij} = \sum_u a_{ij}a_{ui}$ and $k_i = \sum_u a_{iu}$ is the node connectivity.

TOM based dissimilarity measure was generated by

$$d_{ij}^w = 1 - w_{ij} \quad (3)$$

This dissimilarity matrix was used as the input for average linkage hierarchical clustering. The hierarchical clustering grouped the closet ROIs and formed the branches to identify module. For the genetic correlation network, we identified 16 modules spanning the whole brain with the largest module containing 17 ROIs and the smallest containing 3 ROIs (Supplementary Fig. 2).

CPASSOC analysis within modules. We applied the CPASSOC package developed by Zhu et al.¹³ to combine association evidence of ROIs within each module. CPASSOC can integrate association evidence from summary statistics of multiple traits and improves power when variant is associated with at least one trait. CPASSOC provides two statistics, S_{Hom} and S_{Het} . S_{Hom} is similar to the fixed effect meta-analysis method⁴⁹ but accounting for the correlation of summary statistics among cohorts induced by potential overlapped or related samples. In brief, assuming we have summary statistical results of GWAS from J cohorts with K phenotypic traits. In each cohort, single SNP-trait association was analyzed for each trait separately. Let T_{jk} be a summary statistic for a SNP, j^{th} cohort and k^{th} trait. Let $\mathbf{T} = (T_{11}, \dots, T_{1K}, \dots, T_{JK}, \dots, T_{JK})^T$ represents a vector of test statistics for testing the association of a SNP with K traits. Let

$\beta = (\beta_{11}, \dots, \beta_{1K}, \dots, \beta_{JK}, \dots, \beta_{JK})^T$ be the effect sizes of the SNP. The null hypothesis is $H_0: \beta = \mathbf{0}$ and the alternative hypothesis H_1 is that at least one of the elements of β is not equal to zero. We used a Wald test statistic $T_{jk} = \hat{\beta}_{jk} / \hat{s}_{jk}$, where $\hat{\beta}_{jk}$ and \hat{s}_{jk} are the estimated coefficient and corresponding standard error for the k^{th} trait in the j^{th} cohort. It is reasonable to assume that \mathbf{T} follows a multivariate normal distribution with mean $\mathbf{0}$ and correlation matrix R under the null hypothesis. When the effect is homogeneous, the most powerful test statistic S_{Hom} is defined as

$$S_{\text{Hom}} = \frac{e^T (RW)^{-1} T (e^T (RW)^{-1} T)^T}{e^T (WRW)^{-1} e} \quad (4)$$

which follows a χ^2 distribution with one degree of freedom, where $e^T = (1, \dots, 1)$ has length $J \times K$ and W is a diagonal matrix of weights for the individual test statistics. We used the sample sizes for the weights, $w_{jk} = \sqrt{n_j}$, n_j is sample size of the j^{th} cohort.

To further allow for different effect directions of a variant for different traits in different cohorts, we define S_{Het} . We first let

$$S(\tau) = \frac{e^T R(\tau) W(\tau)^{-1} T(\tau) (R(\tau) W(\tau)^{-1} T(\tau))^T}{e^T W(\tau)^{-1} R(\tau)^{-1} W(\tau)^{-1} e} \quad (5)$$

Where $\mathbf{T}(\tau)$ is the sub-vector of \mathbf{T} satisfying $|T_{jk}| > \tau$ for a given $\tau > 0$, $R(\tau)$ is a

sub-matrix of R representing the correlation matrix, and $W(\tau)$ be the diagonal submatrix of W , corresponding to $\mathbf{T}(\tau)$. The test statistic is then

$$S_{\text{Het}} = \max_{\tau > 0} S(\tau) \quad (6)$$

The asymptotic distribution of S_{Het} does not follow a standard distribution but can be evaluated using simulation. S_{Het} is an extension of S_{Hom} but power can be improved when the genetic effect sizes vary for different traits. The distribution of S_{Het} under the null hypothesis can be obtained through simulations or approximated by an estimated beta distribution.

We applied both S_{Hom} and S_{Het} to combine summary statistics for ROIs within each module. The CPASSOC analysis of multiple genetic correlated traits in identified module would allow us to identify variants that are likely to be missed by conventional GWAS of single trait and reduce the multiple comparison burden in the genetic analysis of hundreds of neuroimaging traits. Finally, we identified 15 loci with CPASSOC test P -value less than 1×10^{-7} in nine modules (Supplementary Table 1). Importantly, three previously reported AD-associated SNPs, rs429358, rs2075650 and rs439401 and the FAM222A SNP rs117028417 were exclusively found in one module, which were green colored in Supplementary Fig. 1M and Supplementary Table 1. The Manhattan plots and Q-Q plots of CPASSOC analysis and single ROI GWAS for this module were showed in Fig. 1 and Supplementary Fig. 2.

Genetic analysis of AV-45 PET imaging. ¹⁸F-Florbetapir (AV-45) PET imaging was performed at baseline and 2-year follow-up for participants enrolled in the ADNI GO and two phases²². UC Berkeley extracted weighted AV-45 standardized uptake value ratio (SUVR) means for four main cortical regions: frontal, anterior, and posterior cingulate, lateral parietal and lateral temporal regions (version 2019.4.12) for ADNI-GO2 participants. They also calculated composite SUVR for cortical which is weighted SUVR mean in frontal, cingulate, parietal and temporal regions. These data can be downloaded from the ADNI database. We used the SUVR mean of composite region including whole cerebellum, pons/brainstem and eroded white matter as reference. Mean AV-45 SUVR of frontal, cingulate, lateral parietal, lateral temporal and composite cortical relative to the reference were calculated. The annual percent change in SUVR means at 2-year follow-up compared to baseline was used as the main quantitative phenotype for genetic analysis. The annual percent changes in AV-45 SUVR for all five brain regions were approximately normally distributed (Supplementary Fig. 20). We collected 369 individuals with both SUVR measures for baseline and 2-year follow-up and whole-genome sequencing data. The samples included 120 healthy people, 26 people with AD, 64 people with late mild cognitive impairment (LMCI) and 159 people with early mild cognitive impairment (EMCI) diagnosed at baseline. The samples characteristics and demographics for samples are shown in Supplementary Table 11.

WGS data from 817 ADNI participants were downloaded from the ADNI dataset. WGS was performed using blood-derived genomic DNA samples and sequenced on the Illumina HiSeq2000 using paired-end read chemistry and read lengths of 100 bp at 30–40X coverage⁵⁰. As previously described using Broad GATK and BWA-mem, reads were mapped and aligned to the human genome (build 37), then variants were called^{50,51}.

For single SNP association test, association test of SNP rs117028417 with phenotypes were performed using linear regression under an additive genetic model in PLINK. Baseline age and gender were included as covariates. For gene-based association test, we extracted 8 and 6 functional coding variants defined as missense, in frame deletion/insertion, stop gained/lost, start gained/lost, splice acceptor/donor, or initiator/start codon for FAM222A and TRPV4 respectively. All of those variants are rare with minor allele frequency (MAF) < 0.01 in ADNI samples. Gene-based association tests were performed using burden and SKAT⁵², adjusting age and sex as covariates.

Genetic analysis of CSF A β and Tau. Collection and processing of ADNI CSF samples was described in the ADNI procedures manual (<http://www.adni-info.org/>). We downloaded UPENNBIOMKs dataset.csv file from ADNI website. We collected 617 individuals with both CSF A β_{42} , tTau and pTau at baseline level and WGS data. For baseline data, since raw CSF biomarkers were skewed or bimodal skewed distributed, rank normal transformations were conducted for each biomarker separately (Supplementary Fig. 21a–f). To conduct CSF biomarkers longitudinal change genetic association, we collected 274 individuals with both baseline and 24-month follow-up CSF biomarkers and WGS data. The CSF biomarkers raw data at baseline and 2-year follow-up in 218 individuals were used to calculate annual changes in A β_{42} , tTau and pTau separately. The annual changes of three CSF biomarkers were approximately normally distributed (Supplementary Fig. 21g–i). The samples characteristics and demographics for CSF biomarker traits association analysis are shown in Supplementary Tables 12, 13.

Association test of SNP rs117028417 with phenotypes were performed using linear regression under an additive genetic model in PLINK. Baseline age and sex were included as covariates. We extracted 8 and 15 coding variants defined as missense, in frame deletion/insertion, stop gained/lost, start gained/lost, splice acceptor/donor, or initiator/start codon for FAM222A and TRPV4 respectively (Supplementary Table 4). All of those variants are rare with minor allele frequency

(MAF) < 0.01 in ADNI samples. Gene-based association tests were performed using burden and SKAT⁵², adjusting age and sex as covariates.

Analysis of FAM222A mRNA in AD. The development of the Mount Sinai Brain Bank (MSBB) cohort was described in the previous studies^{35,53}. MSBB is a large AD cohort and now holds over 2,040 well-characterized human brains⁵³. The datasets we used assessed a total of 125 human brains which was assembled after applying stringent inclusion/exclusion criteria and represents the full spectrum of cognitive and neuropathological disease severity³⁵. Detailed sample demographic information and description of the cognitive and neuropathological traits can be seen in previously published paper by Dr. Bin Zhang's lab³⁵. We downloaded the normalized microarray data of MSBB Array Tissue Panel Study from the Synapse at <http://www.synapse.org/#!Synapse:syn3157699>. The RNA samples from 19 brain regions isolated from 125 MSBB specimens were collected and profiled on the Affymetrix 133AB and Affymetrix 133Plus2 platforms. RNA quality was assessed using a combination of a 260/280 ratio derived from resolution electrophoresis system (LabChipTM, Agilent Technologies, Palo Alto, CA, USA) and 3'–5' hybridization ratios for GAPDH probes³⁵. Not all brain regions for all subjects were available for analysis. There was an approximately 60 samples (40 AD, 20 controls) per brain region available for analysis. The array probes were annotated according to the Ensemble version 72 (genome build GRCh37) using the R/Bio-mart library. The raw microarray data were quantile normalized with all probe sets on the arrays using RMA⁵⁴ method implemented in the R/Bioconductor package *affy* (v1.44) with the default parameters. The data were then corrected for covariates including sex, postmortem interval (PMI), pH and race using a linear regression model. The FAM222A gene expression data was identified by probe set 226487_at. The processed FAM222A mRNA level means for groups of AD and control were compared using two-sided Welch t-test using R.

Association analysis of FAM222A DNA methylation. We downloaded two datasets, E-GEOD-45775 and E-GEOD-76105, with DNA methylation profiling from the European Bioinformatics Institute (EMBL-EBI) ArrayExpress website <https://www.ebi.ac.uk/arrayexpress/>. Samples of dataset E-GEOD-45775 included 5 controls, 5 AD Braak stage I–II and 5 AD Braak stage V–VI (Supplementary Table 14). The methylation values were adjusted and normalized using BeadStudio software v3.2 to obtain normalized beta and average Beta detect P-value. The array used the HumanMethylation27_270596_v1.2 design and one methylation site cg01335367 was identified located on chr12:109734355–109734404 (*GRCh38.p12*), associated with FAM222A. We analyzed the association between methylation in cg01335367 with AD using logistic regression and adjusted for sex. We also performed one-way analysis of variance (ANOVA) to determine differences between methylation levels of control and different Alzheimer Braak stage groups. Study E-GEOD-76105 investigated DNA methylation profiling in the superior temporal gyrus (STG). Samples included 34 AD and 34 non-demented controls, which had 52 European, 8 Hispanic, 6 African, 1 Asian Americans and 1 unknown (Supplementary Table 15). The Beta values from the probes were quantile normalized using lumi package in R. We performed association analysis in 52 European Americans only. The association between methylation in those sites with AD were analyzed using logistic regression model adjusting age, gender and estimated cellular proportions (neuronal vs. glial).

Mice and human tissues. Mouse surgery and procedures were performed according to the NIH guidelines and were approved by the Institutional Animal Care and Use Committee (IACUC) at Case Western Reserve University. 5xFAD transgenic mice (B6.Cg-Tg(APPs^{Swf}Llon, PSEN1*^{M146L}L286V) 6799Vas/Mmjax, JAX#008730) were purchased from the Jackson Laboratory. The use of all human tissue samples was approved by the University Hospitals Institutional Review Board (IRB) for human investigation at University Hospitals Case Medical Center at Cleveland. Human brain tissues obtained postmortem from University Hospitals of Cleveland were fixed, and 6-μm-thick consecutive sections were prepared. The information of fixed or frozen human tissues were listed in Supplementary Tables 16, 17.

Immunocytochemistry, immunofluorescence and immunoblot. Immunocytochemistry was performed by the peroxidase anti-peroxidase protocol. Taken briefly, paraffin embedded brain tissue sections were first deparaffinized in xylene and rehydration in graded ethanol and incubated in Tris Buffered Saline (TBS, 50 mM Tris-HCl and 150 mM NaCl, pH 7.6) for 10 min before antigen retrieval in 1X Immuno/DNA retriever with citrate (BioSB, Santa Barbara, CA) under pressure using BioSB's TintoRetriever pressure cooker. Sections were rinsed with distilled H₂O, and blocked with 10% normal goat serum (NGS) in TBS at room temperature (RT) for 30 min. Tissue sections were further incubated with primary antibodies in TBS containing 1% NGS overnight at 4 °C, and immunostained by the peroxidase-antiperoxidase based method. For double Immunofluorescence staining, paraffin embedded tissue sections were deparaffinized in xylene and re-hydrated in graded ethanol without H₂O₂ incubation as described above. The sections were incubated in phosphate buffered saline (PBS) at RT for 10 min followed by block with 10% NGS in PBS for 45 min at RT. The sections were incubated with primary antibodies in PBS containing 1% NGS overnight at 4 °C. After being washed with 1% NGS in

PBS for 10 min, the sections were incubated in 10% NGS for 10 min and followed by three quick washes with 1% NGS in PBS. Then, the sections were incubated with Alexa Fluor 488 or 568 dye labeled secondary antibodies (1:300, Invitrogen, Carlsbad, CA) for 2 h at RT in dark, washed three times with PBS, stained with DAPI, washed again with PBS for three times, and finally mounted with Fluoromount-G mounting medium (Southern Biotech, Birmingham, AL). For thioflavin-S staining, slides were incubated with 1% thioflavin-S (Santa Cruz Biotechnology, Dallas, TX) for 8 min, washed 2 times with 80% ethanol, and 1 time with 95% ethanol and PBS, then stained with DAPI. For immunoblot, human or mice tissue samples were all lysed with TBS plus 1 mM phenylmethylsulfonyl fluoride (PMSF) (Millipore, Burlington, MA), protease inhibitor cocktail (Sigma Aldrich, St. Louis, MO) and phosphatase inhibitor cocktail (Sigma Aldrich, St. Louis, MO). Equal amounts of total protein extract were resolved by SDS-PAGE and transferred to Immobilon-P (Millipore, Burlington, MA). Following blocking with 10% nonfat dry milk, primary and secondary antibodies were applied and the blots developed with Immobilon Western Chemiluminescent HRP Substrate (Millipore, Burlington, MA). Images were taken by ChemiDoc Touch Imager (Bio-rad, Hercules, CA). Primary antibodies used in this study are listed in Supplementary Table 18. The dilution of antibodies used for IF or IHC. 4G8 (BioLegend, SIG-39220; IF, 1:1000), 6E10 (BioLegend, 803001; IF and IHC, 1:1000), 82E1 (IBL, 10323; IF, 1:1000), Aggregatin (Abcam, ab122626; IF/IHC, 1:100), Aggregatin (LifeSpan BioSciences, LS-C170630; IHC, 1:1000), Aggregatin (Aviva Systems Biology, ARP69038_P050; IHC, 1:1000), Flag (Sigma Aldrich, F1804; IF/IHC, 1:1000), Flag (Thermo Fisher, PA1-984B; IHC, 1:200), Flag (Cell Signaling Technology, 2368; IHC, 1:200), Flag-HRP (Proteintech, HRP-66008; IHC, 1:1000), GFP (Abcam, ab32146; IHC, 1:500), Myc (Thermo Fisher, MA1-21316; IHC, 1:1000), Myc (Cell Signaling Technology, 2276; IHC, 1:500), and Nu4 (Klein lab, IF/IHC, 1:2000). All uncropped and unprocessed blots are provided in the Source Data file (Source Data for Statistics and Blots).

Expression vectors and recombinant proteins. pcDNA3.1(+) (Invitrogen, Carlsbad, CA) plasmid was modified to express recombinant proteins to express recombinant proteins containing a 4xFlag-Twin-Strep-tag at their N-terminal. The cDNA of full length or truncated human Aggregatin were inserted into the modified pcDNA3.1(+) plasmid. All primers and cDNA constructs used in this study are listed in Supplementary Data 1 and Supplementary Table 19. Eight micrograms plasmid was used to transfect one 10 cm dish of Lenti-293T cells with TransIT[®]—293 Transfection Reagent (Mirus, Madison, WI). Cells were collected at 24 h after transfection and lysed by lysis buffer (100 mM Tris-HCl, 150 mM NaCl, 1 mM EDTA and 1% NP40, pH 8.0) containing 1 mM PMSF (Millipore, Burlington, MA), protease inhibitor cocktail (Sigma Aldrich, St. Louis, MO) and phosphatase inhibitor cocktail (Sigma Aldrich, St. Louis, MO). The lysate was centrifuged at 14,000 g for 15 min at 4 °C. Supernatant was incubated with Mag-Strep type3 XT beads (IBA Lifesciences, Goettingen, Germany) overnight at 4 °C. Beads were washed three times with lysis buffer, and eluted with BXT buffer (IBA Lifesciences, Goettingen, Germany) overnight at 4 °C. At last, the eluted recombinant proteins were subjected to dialysis using 10 kD Slide-A-Lyzer™ Dialysis Cassettes (Thermo Fisher Scientific, Waltham, MA), concentration with 10 kD Spin Column (Abcam, Cambridge, MA) and purification by size-exclusion chromatography.

Stereotaxic injection and ICV infusion. Mice surgery were performed according to the NIH guidelines and were approved by the Institutional Animal Care and Use Committee (IACUC) at Case Western Reserve University. All AAVs with 10¹³ genome copies per mL (GC per mL) were obtained from Vigene Biosciences (Jinan, China). For stereotaxic injection, mice were anesthetized with isoflurane and immobilized using the stereotaxic frame equipped with a heating blanket to maintain body temperature throughout the procedure. After hair removal and the cleaning of the shaved area with betadine and alcohol, mice were injected with bupivacaine/lidocaine and a small incision was made to expose the skull surface. Two small holes were drilled in the skull (relative to bregma: anteroposterior –2.1 mm, medial lateral ±2 mm; Note that ± is the plus-minus sign throughout this study) followed by injection of 2 μl AAVs using Hamilton syringes into the hippocampal CA1 at dorsal ventral –1.45 mm. Injection speed was pump controlled at 0.2 μl per min. The needle was left in place for 5 min before it was slowly withdrawn. For ICV infusion, the mini-osmotic pump (Model 1004, Alzet, Cupertino, CA; flow rate of 0.11 μl per hour, 28 days) and brain infusion cannula attached with 2.5–3 cm catheter tubes (Brain infusion kit 3, Alzet, Cupertino, CA) were filled with recombinant protein in artificial cerebrospinal fluid (aCSF), followed by pump incubation in aCSF at 37 °C for 48 h according to the manufacturer's instructions. For implant surgery, a hole was drilled in the skull (relative to bregma: anteroposterior –0.5 mm, medial lateral 0.75 mm). The cannula was positioned on the skull with the needle plug 2.5 mm into the ventricle. The cannula was fixed and secured by cyanoacrylate glue.

Behavioral tests. Mice behavioral tests were also performed according to the NIH guidelines and were approved by the Institutional Animal Care and Use Committee (IACUC) at Case Western Reserve University. The Barnes maze consisted of a white acrylic circular disk 92 cm in diameter with 20 equally spaced holes (5 cm in

diameter) located 2 cm from the edge of the disk. The maze was illuminated by two 60 W lamps to provide an aversive, bright disk surface. An acrylic escape box (7 × 7 × 5 cm) could be fitted under any of the holes in the maze. The maze was raised 30 cm from the floor and rested on a pedestal that enabled it to be rotated 360° on a horizontal plane. An acrylic start bin with 15 cm diameter and 15 cm height was used. Trials were recorded using a webcam and analyzed by video tracking software (EthoVision XT, Noldus, Leesburg, VA). Each trial began with the start bin positioned in the center of the maze with the mouse placed inside. The mouse remained in the start bin for 30 s, providing a standard starting context for each trial and ensuring that initial orientation of the mouse in the maze varied randomly from trial to trial. Each mouse was allowed to explore the maze freely for 2 min. After the mouse entered the escape hole, the mouse was left in the escape box for 90 s before being returned to its home cage. If the mouse did not enter the escape box within 120 s, it was gently picked up by the experimenter and placed over the target hole and allowed to enter the escape box. After each trial, the maze and escape box were cleaned carefully with a 10% alcohol solution to dissipate odor cues and provide a standard olfactory context. Five training sessions consisting of two trials each were run on subsequent days and escape latencies were measured. For Y maze test, mice were placed in a Plexiglas Y maze (with arms 60 cm in length) and allowed to explore the maze freely for 10 min. When put in the Y maze, the mice were recorded using the ANY-maze tracking system, and the time and frequency in the spontaneous alteration ratio were counted automatically. All tests were performed at the Case Behavior Core, with the investigator blinded to mouse genotype.

Plaque isolation. Amyloid plaque cores were isolated as previously described⁵⁵. Briefly, whole mouse brain or human brain gray matters were homogenized, boiled in lysis buffer (2% SDS, 50 mM Tris-HCl pH 7.5, 50 mM DTT), and centrifuged at 100,000 g for 1 h at 10 °C. The pellet was solubilized in fraction buffer (1% SDS, 50 mM Tris-HCl pH 7.5, 50 mM DTT) and centrifuged at 100,000 g for 1 h at 10 °C. The pellet was further suspended in fraction buffer and loaded on top of a discontinuous sucrose gradient (1.0, 1.2, 1.4 and 2.0 M sucrose in 50 mM Tris pH 7.5 containing 1% SDS), centrifuged at 220,000 g for 20 h at 10 °C and fractionated into sixteen fractions (300 µl per fraction). Plaque-core-enriched fraction #13 were further diluted in fraction buffer and centrifuged at 220,000 g for 2 h at 10 °C. The resulting pellet was dissolved in 70% formic acid and subsequently dried using a SpeedVac system. Solubilized proteins were further resuspended in 1X SDS sample buffer with 8 M Urea.

Aβ preparation, pull-down, and co-sedimentation assay. Synthetic human Aβ_{1–42} and Aβ_{1–40} peptides (GL Biochem, Shanghai) were dissolved in hydroxyl-fluoro-isopropanol (HFIP) and subsequently dried using a SpeedVac system. Both Aβ_{1–42} and Aβ_{1–40} monomers were prepared by dissolving the lyophilized Aβ in dimethyl sulfoxide (DMSO) at 5 mM, sonicated for 10 min and diluted in PBS buffer (NaCl 137 mM, KCl 2.7 mM, Na₂HPO₄ 10 mM, KH₂PO₄ 1.8 mM, pH 7.4) to different concentrations. Aβ_{1–42} oligomers were prepared in DMSO/PBS and oligomerized by incubation at 4 °C for 24 or 48 h. Monomeric or oligomer Aβ_{1–40} (100 µM) and Aβ_{1–42} solutions (50 µM) supplemented with or without rAggregatin bound Strevdin-avidin beads were incubated in IP buffer (NaCl 300 mM, KCl 2.7 mM, Na₂HPO₄ 10 mM, KH₂PO₄ 1.8 mM, pH 7.4) at RT with shaking for 2 h. After 4 times wash with IP buffer, beads were eluted by 1XSDS sample buffer (32.9 mM Tris-HCl pH 6.8, 13% Glycerol, 1% SDS and 0.005 % bromophenol blue) and analyzed by 10–20% SDS/Tricine protein gels (Invitrogen, Carlsbad, CA). For Aβ_{1–42} oligomer formation and co-sedimentation assay, HFIP dissolved synthetic Aβ_{1–42} peptides were solubilized in 30 mM NaOH to a final concentration of 100 µM, diluted to 2.5 µM in PBS and incubated with and without 30 nM rAggregatin at 37 °C for different time points. After 10-minute centrifuge at 14,000 g, pellets and supernatants were collected and analyzed by 10–20% SDS/Tricine protein gels (Invitrogen, Carlsbad, CA).

Dynamic light scattering. Dynamic light scattering (DLS) experiments were carried out with DynaPro™ instrument from Wyatt technology with a wavelength of 633 nm and a scattering angle of 173°. The measurements of Aggregatin or Aggregatin Δ61–80 at 100 nM were performed at 25 °C after 2 min equilibration with correlation times defined on 10 s per run with 30 runs for each measurement. The results were plotted as intensity of distribution (%) of particles versus hydrodynamic radius (nm).

Circular dichroisms. The spectra were recorded over a wavelength range of 260–190 nm with standard sensitivity at the 50 nm per min scan speed with 1-nm resolution and 1-s time constant at room temperature using a spectropolarimeter (Jasco J-815). All the proteins were dissolved in phosphate buffer (pH 8.0). The final concentration of all samples was 1 µM. The secondary structure content was calculated from the Circular dichroisms (CD) spectra using the online software K2D3.

Surface plasmon resonance. Surface plasmon resonance (SPR) was determined using BIAcore3000 (GE Healthcare Life Sciences, Pittsburgh, PA). rAggregatin (0.1 mg per ml) was immobilized on the CM5 sensor surface (GE Healthcare Life Sciences, Pittsburgh, PA) in 10 mM acetate buffer (pH = 4.5). Running buffer was 1% DMSO in PBS-P buffer (0.02 M phosphate, 2.7 mM KCl, 137 mM NaCl and

0.05% Tween 20). Binding of a dilution series comprising Aβ_{1–42} monomers to rAggregatin was analyzed and fitted to the 1:1 binding model using BIAevaluation software (GE Healthcare Life Sciences, Pittsburgh, PA).

Solid phase binding assay. rAggregatin was coated onto Nunc MaxiSorp 96-well plates (Thermo Fisher Scientific, Waltham, MA) at 0.1 µg per well in PBS at 4 °C overnight. After blocking in 1% BSA in PBS for 2 h at RT, Aβ_{1–42} at 6.25, 12.5, 25, 50, 100, or 200 nM or Aβ_{1–40} at 0.5, 1, 2, 4, or 8, or 16 µM monomers were added to the plates at 4 °C overnight. Plates were washed with PBS 4 times and incubated with 6E10 antibody at 4 °C overnight, followed by 4 times PBS wash and development in TMB solution (Thermo Fisher Scientific, Waltham, MA). The reaction was stopped by sulfuric acid and assessed using a Synergy H1 microplate reader (BioTek, Winooski, VT). Likewise, 0.2 µg Aβ_{1–42} or Aβ_{1–40} monomers were immobilized on plates and incubated with 3.125, 6.25, 12.5, 25, 50, or 100 nM rAggregatin. Bound rAggregatin were detected by an anti-Flag antibody and developed in TMB solution as described above.

ThT fluorescence assay. HFIP treated Aβ_{1–40} or Aβ_{1–42} peptides were solubilized in 30 mM NaOH to a final concentration of 400 µM, sonicated for 5 min in a water bath and stored at –80 °C until further use. To monitor Aβ_{1–40} and Aβ_{1–42} fibrillization, a ThT assay was performed according previous studies^{56,57}. Briefly, a stock solution of Aβ was diluted to in PBS with 20 µM ThT. Then rAggregatin were added at desired concentrations to the final volume of 100 µl. All samples were transferred to a black 96-well nonbinding Surface microplate with clear bottom (Corning, Corning, NY), and sealed with a polyester-based sealing film (Corning, Corning, NY). Samples were incubated at 37 °C with stirring. Real-time ThT fluorescence was measured every 5 min for at least 12 h at the excitation and emission wavelengths of 446 nm and 482 nm respectively by a Synergy H1 microplate reader (BioTek, Winooski, VT).

Aβ_{1–42} aggregates stained by Thio-S. To evaluate Aβ aggregates formed in vitro, rAggregatin (30 nM) and 2.5 µM Aβ in PBS were incubated at 37 °C for 4 weeks. 20 µl of protein solution were applied to the glass slides and completely air dry for 30 min. After washing with PBS, the samples were stained by 1% Thio-S for 10 min. The 3D confocal images were analyzed by using Imaris (Bitplane, Concord, MA) and the structure surface were extracted by using the SURFACE tools following the manufacturer's instructions.

Negative electric microscopy. HFIP dissolved synthetic Aβ_{1–42} peptides were solubilized in 30 mM NaOH to a final concentration of 100 µM. Then diluted to 2.5 µM in PBS and incubated with and without 30 nM rAggregatin at 37 °C. Immediately following the indicated incubation time, 20 µl of protein solution were applied to the support surface of the grids, which were autoclaved by UV irradiation overnight. The grids were washed with 20 µl droplets of water 4 times, followed by a 20 µl droplet of uranyl acetate solution, then examined in an FEI Tecnai Spirit (T12) with a Gatan US4000 4kx4k CCD.

Total Aβ measurement by ELISA. Brains were homogenized in TBS Buffer (50 mM Tris-HCl and 150 mM NaCl, pH 7.6) containing 1 mM PMSF (Millipore, Burlington, MA), protease inhibitor cocktail (Sigma Aldrich, St. Louis, MO) and phosphatase inhibitor cocktail (Sigma Aldrich, St. Louis, MO). Total protein concentrations were determined using the BCA kit (Thermo Fisher Scientific, Waltham, MA). ELISA of total Aβ was carried out in 96-well high-binding microtiter plates. Monoclonal antibody 6E10 raised against residues Aβ_{1–16} was used as a capture antibody (diluted in PBS pH 7.4) and incubated overnight at 4 °C in a humid chamber. After removal of the capture antibody, the plate surface was blocking with 1% BSA for 1.5 h. After washing with PBS, 0.5 µg total protein were added and incubated at 4 °C overnight. Monoclonal antibody MOAB-2 coupled to horseradish peroxidase diluted in PBS were used as secondary antibodies and again incubated overnight at 4 °C. After three times washing with PBS, 100 µl of TMB ELISA peroxidase substrate (Thermo Fisher Scientific, Waltham, MA) was added and incubated for 1–10 min at RT in darkness. The reaction was stopped with 100 µl 2 M H₂SO₄ and absorbance was measured in a microplate reader at 450 nm. For generation of standard curves, synthetic Aβ_{1–42} peptides freshly dissolved in DMSO from 1 ng per µL to 10 pg per µL.

Isolation of exosomes. Lenti-293T cells were transfected with empty vector or pCDNA-4xFlag-Aggregatin using TransIT®–293 Transfection Reagent (Mirus, Madison, WI). Twenty-four hours after transfection, cells were cultured in the DMEM medium supplemented with exosome-free FBS. Forty-eight hours later, the cell culture medium was collected and centrifuged at 300 g for 15 min to remove cells and debris. The supernatant was further filtered through a 0.22 µm filter and centrifuged at 100,000 g for 2 h at 4 °C. The pellets enriched with exosomes were resuspended in the lysis buffer (100 mM Tris-HCl, 150 mM NaCl, 1 mM EDTA and 1% NP40, pH 8.0) containing 1 mM PMSF (Millipore, Burlington, MA), protease inhibitor cocktail (Sigma Aldrich, St. Louis, MO), and phosphatase inhibitor cocktail (Sigma Aldrich, St. Louis, MO) followed by immunoblot analysis.

Confocal microscopy and image analysis. All fluorescence images were imaged on a Leica TCS SP8 gSTED confocal microscopy (Leica Microsystems, Buffalo Grove, IL) equipped with a motorized super Z galvo stage, two PMTs, three HyD SP GaAsP detectors for gated imaging, and the AOBs system lasers including a 405 nm, Argon (458, 476, 488, 496, 514 nm), a tunable white light (470 to 670 nm), and a 592 nm STED depletion laser. Series of confocal images with optical thickness of 300 nm were collected using the $\times 100$ oil objective. All 3D confocal images of plaque were reconstructed using Imaris (Bitplane, Concord, MA) after background subtraction. Quantification of Aggregatin foci in plaques and measurement of plaque load and size were performed with open-source image analysis programs WCIF ImageJ (developed by W. Rasband).

Statistical analysis. Statistical analysis was done with one-way analysis of variance (ANOVA) followed by Tukey's multiple comparison test or student-t-test using GraphPad Prism (GraphPad, CA). Data are means \pm SEM. $p < 0.05$ was considered to be statistically significant.

Reporting summary. Further information on research design is available in the Nature Research Reporting Summary linked to this article.

Data availability

The data that support the findings of this study are available on request from the corresponding author X.L.W. Case Western Reserve University supports the NIH Guidelines for the Sharing of Research Resources including "the Sharing of Biomedical Research Resources: Principles and Guidelines for Recipients of NIH Grants and Contracts". If any intellectual property is pursued, the data will be shared and distributed following advice from the authorities of Case Western Reserve University. The source data underlying Figs. 1, 2g, 2h, 3a–d, 3f, 3g, 4a–f, 5c–f, 5h–k, 5m–p, and Supplementary Figs. 3a–e, 4, 5c–h, 7d, 7e, 7i–k, 8b, 8d, 9a–d, 10b, 10c, 10e, 11b–f, 12a, 12c–e, 13a–d, 14, 15e–h, 16, 17b–d, 18b, 18c, 19a, 19c, and 19e are provided as a Source Data file. Source Data for GWAS in Fig. 1: 10.6084/m9.figshare.11336657 (<https://figshare.com/s/2d59f2f0b7cfd04d31ca>). Source Data for GWAS in Supplementary Fig. 2a: 10.6084/m9.figshare.11336666 (<https://figshare.com/s/c094e1a5c2ea562b6aef>). Source Data for GWAS in Supplementary Fig. 2b: 10.6084/m9.figshare.11337272 (<https://figshare.com/s/1449069e2b80a75b30cf>). Source Data for GWAS in Supplementary Fig. 2c: 10.6084/m9.figshare.11337281 (<https://figshare.com/s/4cc10442ea2f51333cd7>). Source Data for GWAS in Supplementary Fig. 2d: 10.6084/m9.figshare.11337284 (<https://figshare.com/s/220153dbf30bca2802>). Source Data for GWAS in Supplementary Fig. 2e: 10.6084/m9.figshare.11337290 (<https://figshare.com/s/8a1f80899f6b462f284>).

Received: 3 October 2019; Accepted: 10 December 2019;

Published online: 21 January 2020

References

- Smith, M. A. Alzheimer disease. *Int. Rev. Neurobiol.* **42**, 1–54 (1998).
- Tanzi R. E. The genetics of Alzheimer disease. *Cold Spring Harb Perspect. Med.* **2**, a006296 (2012).
- Cacace, R., Sleegers, K. & Van Broeckhoven, C. Molecular genetics of early-onset Alzheimer's disease revisited. *Alzheimers Dement* **12**, 733–748 (2016).
- Gatz, M. et al. Heritability for Alzheimer's disease: the study of dementia in Swedish twins. *J. Gerontol. A Biol. Sci. Med. Sci.* **52**, M117–M125 (1997).
- Verheijen J., Sleegers K. Understanding Alzheimer disease at the interface between genetics and transcriptomics. *Trends Genet.: TIG.* **34**, 434–447 (2018).
- Jack, C. R. Jr et al. Tracking pathophysiological processes in Alzheimer's disease: an updated hypothetical model of dynamic biomarkers. *Lancet Neurol.* **12**, 207–216 (2013).
- Furney, S. J. et al. Genome-wide association with MRI atrophy measures as a quantitative trait locus for Alzheimer's disease. *Mol. Psychiatr.* **16**, 1130–1138 (2011).
- Biffi, A. et al. Genetic variation and neuroimaging measures in Alzheimer disease. *Arch. Neurol.* **67**, 677–685 (2010).
- Rajagopalan, P., Hibar, D. P. & Thompson, P. M. TREM2 and neurodegenerative disease. *N. Engl. J. Med.* **369**, 1565–1567 (2013).
- Giraldo M., et al. Variants in triggering receptor expressed on myeloid cells 2 are associated with both behavioral variant frontotemporal lobar degeneration and Alzheimer's disease. *Neurobiol. Aging* **34**, 2077.e11–8. (2013).
- Sivakumaran, S. et al. Abundant pleiotropy in human complex diseases and traits. *Am. J. Hum. Genet.* **89**, 607–618 (2011).
- Wagner, G. P. & Zhang, J. Z. The pleiotropic structure of the genotype-phenotype map: the evolvability of complex organisms. *Nat. Rev. Genet.* **12**, 204–213 (2011).
- Zhu, X. et al. Meta-analysis of correlated traits via summary statistics from GWASs with an application in hypertension. *Am. J. Hum. Genet.* **96**, 21–36 (2015).
- Bulik-Sullivan, B. et al. An atlas of genetic correlations across human diseases and traits. *Nat. Genet.* **47**, 1236–1241 (2015).
- Harold, D. et al. Genome-wide association study identifies variants at CLU and PICALM associated with Alzheimer's disease. *Nat. Genet.* **41**, 1088–1093 (2009).
- Yashin, A. I. et al. Hidden heterogeneity in Alzheimer's disease: Insights from genetic association studies and other analyses. *Exp. Gerontol.* **107**, 148–160 (2018).
- Harasty, J. A., Halliday, G. M., Kril, J. J. & Code, C. Specific temporoparietal gyral atrophy reflects the pattern of language dissolution in Alzheimer's disease. *Brain* **122**(Pt 4), 675–686 (1999).
- Scahill, R. L., Schott, J. M., Stevens, J. M., Rossor, M. N. & Fox, N. C. Mapping the evolution of regional atrophy in Alzheimer's disease: unbiased analysis of fluid-registered serial MRI. *Proc. Natl Acad. Sci. USA* **99**, 4703–4707 (2002).
- Kilimann, I. et al. Subregional basal forebrain atrophy in Alzheimer's disease: a multicenter study. *J. Alzheimers Dis.* **40**, 687–700 (2014).
- Hibar, D. P. et al. Common genetic variants influence human subcortical brain structures. *Nature* **520**, 224–229 (2015).
- Lambert, J. C. et al. Meta-analysis of 74,046 individuals identifies 11 new susceptibility loci for Alzheimer's disease. *Nat. Genet.* **45**, 1452–1458 (2013).
- Jagust, W. J. et al. The Alzheimer's Disease neuroimaging initiative positron emission tomography core. *Alzheimers Dement* **6**, 221–229 (2010).
- Lee, S. et al. Optimal unified approach for rare-variant association testing with application to small-sample case-control whole-exome sequencing studies. *Am. J. Hum. Genet.* **91**, 224–237 (2012).
- Wu, M. C. et al. Rare-variant association testing for sequencing data with the sequence kernel association test. *Am. J. Hum. Genet.* **89**, 82–93 (2011).
- Lambert, M. P. et al. Monoclonal antibodies that target pathological assemblies of Abeta. *J. neurochemistry* **100**, 23–35 (2007).
- Oakley, H. et al. Intraneuronal beta-amyloid aggregates, neurodegeneration, and neuron loss in transgenic mice with five familial Alzheimer's disease mutations: potential factors in amyloid plaque formation. *J. Neurosci.* **26**, 10129–10140 (2006).
- Chishti, M. A. et al. Early-onset amyloid deposition and cognitive deficits in transgenic mice expressing a double mutant form of amyloid precursor protein 695. *J. Biol. Chem.* **276**, 21562–21570 (2001).
- Radde, R. et al. Abeta42-driven cerebral amyloidosis in transgenic mice reveals early and robust pathology. *EMBO Rep.* **7**, 940–946 (2006).
- Hsiao, K. et al. Correlative memory deficits, Abeta elevation, and amyloid plaques in transgenic mice. *Science* **274**, 99–102 (1996).
- Oddo, S. et al. Triple-transgenic model of Alzheimer's disease with plaques and tangles: intracellular Abeta and synaptic dysfunction. *Neuron* **39**, 409–421 (2003).
- Walsh, D. M., Lomakin, A., Benedek, G. B., Condron, M. M. & Teplow, D. B. Amyloid beta-protein fibrillogenesis—detection of a protofibrillar intermediate. *J. Biol. Chem.* **272**, 22364–22372 (1997).
- Akiyama, H. et al. Inflammation and Alzheimer's disease. *Neurobiol. Aging* **21**, 383–421 (2000).
- O'Leary, T. P., Robertson, A., Chipman, P. H., Rafuse, V. F. & Brown, R. E. Motor function deficits in the 12 month-old female 5xFAD mouse model of Alzheimer's disease. *Behav. Brain Res* **337**, 256–263 (2018).
- Kimura, R. & Ohno, M. Impairments in remote memory stabilization precede hippocampal synaptic and cognitive failures in 5XFAD Alzheimer mouse model. *Neurobiol. Dis.* **33**, 229–235 (2009).
- Wang, M. et al. Integrative network analysis of nineteen brain regions identifies molecular signatures and networks underlying selective regional vulnerability to Alzheimer's disease. *Genome Med* **8**, 104 (2016).
- Bird, A. DNA methylation patterns and epigenetic memory. *Genes Dev.* **16**, 6–21 (2002).
- Mastroeni, D. et al. Epigenetic changes in Alzheimer's disease: decrements in DNA methylation. *Neurobiol. Aging* **31**, 2025–2037 (2010).
- Kokjohn, T. A. & Roher, A. E. Amyloid precursor protein transgenic mouse models and Alzheimer's disease: understanding the paradigms, limitations, and contributions. *Alzheimers Dement* **5**, 340–347 (2009).
- Kummer, M. P. & Heneka, M. T. Truncated and modified amyloid-beta species. *Alzheimers Res Ther.* **6**, 28 (2014).
- Zhao, N., Liu, C. C., Qiao, W. & Bu, G. Apolipoprotein E, receptors, and modulation of Alzheimer's disease. *Biol. Psychiatry* **83**, 347–357 (2018).
- Shi, Y. et al. ApoE4 markedly exacerbates tau-mediated neurodegeneration in a mouse model of tauopathy. *Nature* **549**, 523–527 (2017).
- Liu, E. Y., Li, M., Wang, W. & Li, Y. MaCH-admix: genotype imputation for admixed populations. *Genet Epidemiol.* **37**, 25–37 (2013).
- Doshi, J. et al. MUSE: Multi-atlas region segmentation utilizing ensembles of registration algorithms and parameters, and locally optimal atlas selection. *Neuroimage* **127**, 186–195 (2016).
- Avants, B. B., Epstein, C. L., Grossman, M. & Gee, J. C. Symmetric diffeomorphic image registration with cross-correlation: evaluating automated labeling of elderly and neurodegenerative brain. *Med. Image Anal.* **12**, 26–41 (2008).

45. Ou, Y., Sotiras, A., Paragios, N. & Davatzikos, C. DRAMMS: deformable registration via attribute matching and mutual-saliency weighting. *Med. Image Anal.* **15**, 622–639 (2011).
46. Purcell, S. Variance components models for gene-environment interaction in twin analysis. *Twin Res.* **5**, 554–571 (2002).
47. Zhang, B. & Horvath, S. A general framework for weighted gene co-expression network analysis. *Stat. Appl. Genet. Mol. Biol.* **4**, Article17 (2005).
48. Barabasi, A. L. & Albert, R. Emergence of scaling in random networks. *Science* **286**, 509–512 (1999).
49. Willer, C. J., Li, Y. & Abecasis, G. R. METAL: fast and efficient meta-analysis of genomewide association scans. *Bioinformatics* **26**, 2190–2191 (2010).
50. Nho, K. et al. Comparison of multi-sample variant calling methods for whole genome sequencing. *IEEE Int. Conf. Syst. Biol.* **2014**, 59–62 (2014).
51. Nho, K. et al. Integration of bioinformatics and imaging informatics for identifying rare PSEN1 variants in Alzheimer's disease. *BMC Med. Genomics* **9** (Suppl. 1), 30 (2016).
52. Ionita-Laza, I., Lee, S., Makarov, V., Buxbaum, J. D. & Lin, X. Sequence kernel association tests for the combined effect of rare and common variants. *Am. J. Hum. Genet.* **92**, 841–853 (2013).
53. Wang, M. et al. The Mount Sinai cohort of large-scale genomic, transcriptomic and proteomic data in Alzheimer's disease. *Sci. Data* **5**, 180185 (2018).
54. Irizarry, R. A. et al. Exploration, normalization, and summaries of high density oligonucleotide array probe level data. *Biostatistics* **4**, 249–264 (2003).
55. Rostagno, A. & Ghiso, J. Isolation and biochemical characterization of amyloid plaques and paired helical filaments. *Curr. Protoc. Cell Biol.* **44**, 1–33 (2009).
56. Biancalana, M. & Koide, S. Molecular mechanism of Thioflavin-T binding to amyloid fibrils. *Biochimica Et. Biophysica Acta* **1804**, 1405–1412 (2010).
57. Xue, C., Lin, T. Y., Chang, D. & Guo, Z. Thioflavin T as an amyloid dye: fibril quantification, optimal concentration and effect on aggregation. *R. Soc. Open Sci.* **4**, 160696 (2017).

Acknowledgements

This work is supported by grants from the US National Institutes of Health (RF1AG056320 to X.W.) and the US Alzheimer's Association (AARG-17-499682 to X.W.). Data collection and sharing for this project was funded by the Alzheimer's Disease Neuroimaging Initiative (ADNI) (National Institutes of Health Grant U01 AG024904) and DOD ADNI (Department of Defense award number W81XWH-12-2-0012). ADNI is funded by the National Institute on Aging, the National Institute of Biomedical Imaging and Bioengineering, and through generous contributions from the following: AbbVie, Alzheimer's Association; Alzheimer's Drug Discovery Foundation; Araclon Biotech; BioClinica, Inc.; Biogen; Bristol-Myers Squibb Company; CereSpir, Inc.; Cogstate; Eisai Inc.; Elan Pharmaceuticals, Inc.; Eli Lilly and Company; EuroImmun; F. Hoffmann-La Roche Ltd and its affiliated company Genentech, Inc.; Fujirebio; GE Healthcare; IXICO Ltd.; Janssen Alzheimer Immunotherapy Research & Development, LLC.; Johnson & Johnson Pharmaceutical Research & Development LLC.; Lumosity; Lundbeck; Merck & Co., Inc.; Meso Scale Diagnostics, LLC.; NeuroRx Research; Neurotrack Technologies; Novartis Pharmaceuticals Corporation; Pfizer Inc.; Piramal Imaging; Servier; Takeda Pharmaceutical Company; and Transition Therapeutics. The

Canadian Institutes of Health Research is providing funds to support ADNI clinical sites in Canada. Private sector contributions are facilitated by the Foundation for the National Institutes of Health (www.fnih.org). The grantee organization is the Northern California Institute for Research and Education, and the study is coordinated by the Alzheimer's Therapeutic Research Institute at the University of Southern California. ADNI data are disseminated by the Laboratory for Neuro Imaging at the University of Southern California.

Author contributions

X.W. and J.L. conceived and directed the project, interpreted results, and wrote the paper. J.L. and X.Z. contributed to the genetic studies. T.Y. and J.G. contributed to human pathology experiments. T.Y. contributed to the identification of the A β binding motif of Aggregatin. J.G. contributed to A β in vitro binding and aggregation experiments. T.Y., J.G., and L.W. contributed to all animal related studies. H.F. contributed to electron microscopy study. T.Y., J.L., J.G. L.W., X.Z., and X.W. all contributed to data analysis and paper preparation.

Competing interests

The authors declare the following competing interests: X.W. has a patent pending regarding the treatment and diagnosis of AD and related dementia based on Aggregatin.

Additional information

Supplementary information is available for this paper at <https://doi.org/10.1038/s41467-019-13962-0>.

Correspondence and requests for materials should be addressed to J.L., X.Z. or X.W.

Peer review information *Nature Communications* thanks Nilufer Ertekin-Taner and the other, anonymous, reviewer(s) for their contribution to the peer review of this work.

Reprints and permission information is available at <http://www.nature.com/reprints>

Publisher's note Springer Nature remains neutral with regard to jurisdictional claims in published maps and institutional affiliations.



Open Access This article is licensed under a Creative Commons Attribution 4.0 International License, which permits use, sharing, adaptation, distribution and reproduction in any medium or format, as long as you give appropriate credit to the original author(s) and the source, provide a link to the Creative Commons license, and indicate if changes were made. The images or other third party material in this article are included in the article's Creative Commons license, unless indicated otherwise in a credit line to the material. If material is not included in the article's Creative Commons license and your intended use is not permitted by statutory regulation or exceeds the permitted use, you will need to obtain permission directly from the copyright holder. To view a copy of this license, visit <http://creativecommons.org/licenses/by/4.0/>.

© The Author(s) 2020

The Alzheimer Disease Neuroimaging Initiative

Michael W. Weiner⁴, Norbert Schuff⁴, Howard J. Rosen⁴, Bruce L. Miller⁴, David Perry⁴, Paul Aisen⁵, Arthur W. Toga⁵, Gustavo Jimenez⁵, Michael Donohue⁵, Devon Gessert⁵, Kelly Harless⁵, Jennifer Salazar⁵, Yuliana Cabrera⁵, Sarah Walter⁵, Lindsey Hergesheimer⁵, Arthur W. Toga⁵, Karen Crawford⁵, Scott Neu⁵, Lon S. Schneider⁵, Sonia Pawluczyk⁵, Mauricio Becerra⁵, Liberty Teodoro⁵, Bryan M. Spann⁵, Paul Aisen⁵, Ronald Petersen⁶, Clifford R. Jack⁶, Matthew Bernstein⁶, Bret Borowski⁶, Jeff Gunter⁶, Matt Senjem⁶, Prashanthi Vemuri⁶, David Jones⁶, Kejal Kantarci⁶, Chad Ward⁶, Sara S. Mason⁶, Colleen S. Albers⁶, David Knopman⁶, Kris Johnson⁶, Neill R. Graff-Radford⁷, Francine Parfitt⁷, Kim Poki-Walker⁷, William Jagust⁸, Susan Landau⁸, John Q. Trojanowki⁹, Leslie M. Shaw⁹, Jason H. Karlawish⁹, David A. Wolk⁹, Sanjeev Vaishnavi⁹,

Christopher M. Clark⁹, Steven E. Arnold⁹, Virginia Lee⁹, Magdalena Korecka⁹, Michal Figurski⁹, Laurel Beckett¹⁰, Danielle Harvey¹⁰, Charles DeCARli¹⁰, Evan Fletcher¹⁰, Pauline Maillard¹⁰, John Olichney¹⁰, Owen Carmichael¹⁰, Robert C. Green¹¹, Reisa A. Sperling¹¹, Keith A. Johnson¹¹, Gad A. Marshall¹¹, Andrew J. Saykin¹², Tatiana M. Foroud¹², Li Shen¹², Kelley Faber¹², Sungeun Kim¹², Kwangsik Nho¹², Martin R. Farlow¹², Ann Marie Hake¹², Brandy R. Matthews¹², Jared R. Brosch¹², Scott Herring¹², John Morris¹³, Marc Raichle¹³, David Holtzman¹³, John C. Morris¹³, Nigel J. Cairns¹³, Erin Franklin¹³, Lisa Taylor-Reinwald¹³, Beau Ances¹³, David Winkfield¹³, Maria Carroll¹³, Angela Oliver¹³, Mary L. Creech¹³, Mark A. Mintun¹³, Stacy Schneider¹³, Lew Kuller¹⁴, Chet Mathis¹⁴, Oscar L. Lopez¹⁴, MaryAnn Oakley¹⁴, Donna M. Simpson¹⁴, Steven Paul¹⁵, Norman Relkin¹⁵, Gloria Chiang¹⁵, Michael Lin¹⁵, Lisa Ravdin¹⁵, Peter Davies¹⁶, M. Marcel Mesulam¹⁷, Marek-Marsel Mesulam¹⁷, Emily Rogalski¹⁷, Kristine Lipowski¹⁷, Sandra Weintraub¹⁷, Borna Bonakdarpour¹⁷, Diana Kerwin¹⁷, Chuang-Kuo Wu¹⁷, Nancy Johnson¹⁷, Peter J. Snyder¹⁸, Tom Montine¹⁹, Michael Donohue²⁰, Lean Thal²⁰, James Brewer²⁰, Helen Vanderswag²⁰, Adam Fleisher²⁰, Paul Thompson²¹, Ellen Woo²¹, Daniel H.S. Silverman²¹, Edmond Teng²¹, Sarah Kremen²¹, Liana Apostolova²¹, Kathleen Tingus²¹, Po H. Lu²¹, George Bartzokis²¹, Robert A. Koeppe²², Jaimie Ziolkowski²², Judith L. Heidebrink²², Joanne L. Lord²², Norm Foster²³, Marilyn Albert²⁴, Chiadi Onyike²⁴, Daniel D'Agostino²⁴, Stephanie Kielb²⁴, Joseph Quinn²⁵, Lisa C. Silbert²⁵, Betty Lind²⁵, Jeffrey A. Kaye²⁵, Raina Carter²⁵, Sara Dolen²⁵, Javier Villanueva-Meyer²⁶, Valory Pavlik²⁶, Nathaniel Pacini²⁶, Ashley Lamb²⁶, Joseph S. Kass²⁶, Rachelle S. Doody²⁶, Victoria Shibley²⁶, Munir Chowdhury²⁶, Susan Rountree²⁶, Mimi Dang²⁶, Yaakov Stern²⁷, Lawrence S. Honig²⁷, Karen L. Bell²⁷, Randy Yeh²⁷, Daniel Marson²⁸, David Geldmacher²⁸, Marissa Natelson²⁸, Randall Griffith²⁸, David Clark²⁸, John Brockington²⁸, Hillel Grossman²⁹, Effie Mitsis²⁹, Raj C. Shah³⁰, Melissa Lamar³⁰, Patricia Samuels³⁰, Martin Sadowski³¹, Mohammed O. Sheikh³¹, Jamika Singleton-Garvin³¹, Anasztasia Ulysse³¹, Mrunalini Gaikwad³¹, P. Murali Doraiswamy³², Olga James³², Salvador Borges-Neto³², Terence Z. Wong³², Edward Coleman³², Charles D. Smith³³, Greg Jicha³³, Peter Hardy³³, Riham El Khoul³³, Elizabeth Oates³³, Gary Conrad³³, Anton P. Porsteinsson³⁴, Kim Martin³⁴, Nancy Kowalksi³⁴, Melanie Keltz³⁴, Bonnie S. Goldstein³⁴, Kelly M. Makino³⁴, M. Saleem Ismail³⁴, Connie Brand³⁴, Gaby Thai³⁵, Aimee Pierce³⁵, Beatriz Yanez³⁵, Elizabeth Sosa³⁵, Megan Witbracht³⁵, Steven Potkin³⁵, Kyle Womack³⁶, Dana Mathews³⁶, Mary Quiceno³⁶, Allan I. Levey³⁷, James J. Lah³⁷, Janet S. Cellar³⁷, Jeffrey M. Burns³⁸, Russell H. Swerdlow³⁸, William M. Brooks³⁸, Christopher H. van Dyck³⁹, Richard E. Carson³⁹, Pradeep Varma³⁹, Howard Chertkow⁴⁰, Howard Bergman⁴⁰, Chris Hosein⁴⁰, Raymond Scott Turner⁴¹, Kathleen Johnson⁴¹, Brigid Reynolds⁴¹, Neil Kowall⁴², Ronald Killiany⁴², Andrew E. Budson⁴², Alexander Norbash⁴², Patricia Lynn Johnson⁴², Thomas O. Obisesan⁴³, Ntekim E. Oyonumo⁴³, Joanne Allard⁴³, Olu Ogunlana⁴³, Alan Lerner⁴⁴, Paula Ogrocki⁴⁴, Curtis Tatsuoka⁴⁴, Parianne Fatica⁴⁴, Sterling Johnson⁴⁵, Sanjay Asthana⁴⁵, Cynthia M. Carlsson⁴⁵, Jerome Yesavage⁴⁶, Joy L. Taylor⁴⁶, Steven Chao⁴⁶, Barton Lane⁴⁶, Allyson Rosen⁴⁶, Jared Tinklenberg⁴⁶, Douglas W. Scharre⁴⁷, Maria Kataki⁴⁷, Rawan Tarawneh⁴⁷, Earl A. Zimmerman⁴⁸, Dzintra Celmins⁴⁸, David Hart⁴⁸, Laura A. Flashman⁴⁹, Marc Seltzer⁴⁹, Mary L. Hynes⁴⁹, Robert B. Santulli⁴⁹, Kaycee M. Sink⁵⁰, Mia Yang⁵⁰, Akiva Mintz⁵⁰, Delwyn D. Miller⁵¹, Karen Ekstam Smith⁵¹, Hristina Koleva⁵¹, Ki Won Nam⁵¹, Hyungsub Shim⁵¹, Susan K. Schultz⁵¹, Amanda Smith⁵², Christi Leach⁵², Balebail Ashok Raj⁵², Kristin Fargher⁵², Eric M. Reiman⁵³, Kewei Chen⁵³, Pierre Tariot⁵³, Anna Burke⁵³, Joel Hetelle⁵³, Kathryn DeMarco⁵³, Nadira Trncic⁵³, Adam Fleisher⁵³, Stephanie Reeder⁵³, Edward Zamrini⁵⁴, Christine M. Belden⁵⁴, Sherye A. Sirrel⁵⁴, Ranjan Duara⁵⁵, Maria T. Greig-Custo⁵⁵, Rosemarie Rodriguez⁵⁵, Charles Bernick⁵⁶, Donna Munic⁵⁶, Zaven Khachaturian⁵⁷, Neil Buckholtz⁵⁸, John Hsiao⁵⁸, William Potter⁵⁹, Howard Fillit⁶⁰, Franz Hefti⁶¹, Carl Sadowsky⁶², Teresa Villena⁶², Ging-Yuek Robin Hsiung⁶³, Benita Mudge⁶³, Vesna Sossi⁶³, Howard Feldman⁶³, Michele Assaly⁶³, Elizabeth Finger⁶⁴, Stephen Pasternack⁶⁴,

William Pavlosky⁶⁴, Irina Rachinsky⁶⁴, Dick Drost⁶⁴, Andrew Kertesz⁶⁴, Sandra Black⁶⁵, Bojana Stefanovic⁶⁵, Chrinthaka Heyn⁶⁵, Brian R. Ott⁶⁶, Geoffrey Tremont⁶⁶, Lori A. Daniello⁶⁶, Courtney Bodge⁶⁷, Stephen Salloway⁶⁷, Paul Malloy⁶⁷, Stephen Correia⁶⁷, Athena Lee⁶⁷, Godfrey D. Pearlson⁶⁸, Karen Blank⁶⁸, Karen Anderson⁶⁸, Vernice Bates⁶⁹, Horacio Capote⁶⁹, Michelle Rainka⁶⁹, Jacobo Mintzer⁷⁰, Kenneth Spicer⁷⁰, David Bachman⁷⁰, Elizabeth Finger⁷¹, Stephen Pasternak⁷¹, Irina Rachinsky⁷¹, John Rogers⁷¹, Andrew Kertesz⁷¹, Dick Drost⁷¹, Elizabeth Finger⁷¹, Stephen Pasternak⁷¹, Irina Rachinsky⁷¹, John Rogers⁷¹, Andrew Kertesz⁷¹, Dick Drost⁷¹, Nunzio Pomara⁷², Raymundo Hernando⁷², Antero Sarrael⁷², Smita Kittur⁷³, Michael Borrie⁷⁴, T.-Y. Lee⁷⁴, Rob Bartha⁷⁴, Richard Frank⁷⁵, Nick Fox⁷⁶, Veronika Logovinsky⁷⁷, Maria Corrillo⁷⁸ & Greg Sorensen⁷⁹

⁴University of California, San Francisco, CA, USA. ⁵University of Southern California, San Francisco, CA, USA. ⁶Mayo Clinic, Rochester, MN, USA. ⁷Mayo Clinic, Jacksonville, FL, USA. ⁸University of California, Berkeley, CA, USA. ⁹University of Pennsylvania, Philadelphia, PA, USA. ¹⁰University of California, Davis, CA, USA. ¹¹Brigham and Women's Hospital, Boston, MA, USA. ¹²Indiana University, Indianapolis, IN, USA. ¹³Washington University, St. Louis, MO, USA. ¹⁴University of Pittsburgh, Pittsburgh, PA, USA. ¹⁵Cornell University, New York, NY, USA. ¹⁶Albert Einstein College of Medicine of Yeshiva University, New York, NY, USA. ¹⁷Northwestern University, Chicago, IL, USA. ¹⁸Brown University, Providence, RI, USA. ¹⁹University of Washington, Seattle, WA, USA. ²⁰University of California, San Diego, CA, USA. ²¹University of California, Los Angeles, CA, USA. ²²University of Michigan, Ann Arbor, MI, USA. ²³University of Utah, Salt Lake City, UT, USA. ²⁴Johns Hopkins University, Baltimore, MD, USA. ²⁵Oregon Health & Science University, Portland, OR, USA. ²⁶Baylor College of Medicine, Houston, TX, USA. ²⁷Columbia University Medical Center, New York, NY, USA. ²⁸University of Alabama, Birmingham, AL, USA. ²⁹Mount Sinai School of Medicine, New York, NY, USA. ³⁰Rush University Medical Center, Chicago, IL, USA. ³¹New York University, New York, NY, USA. ³²Duke University Medical Center, Durham, NC, USA. ³³University of Kentucky, Lexington, KY, USA. ³⁴University of Rochester Medical Center, Rochester, NY, USA. ³⁵University of California, Irvine, CA, USA. ³⁶University of Texas Southwestern Medical School, Dallas, TX, USA. ³⁷Emory University, Atlanta, GA, USA. ³⁸University of Kansas Medical Center, Kansas City, KS, USA. ³⁹Yale University School of Medicine, New Haven, CT, USA. ⁴⁰McGill University Montreal-Jewish General Hospital, Montreal, QC, Canada. ⁴¹Georgetown University Medical Center, Washington, DC, USA. ⁴²Boston University, Boston, MA, USA. ⁴³Howard University, Washington, DC, USA. ⁴⁴University Hospitals, Cleveland, OH, USA. ⁴⁵University of Wisconsin, Madison, WI, USA. ⁴⁶Stanford University, Stanford, CA, USA. ⁴⁷Ohio State University, Columbus, OH, USA. ⁴⁸Albany Medical College, Albany, NY, USA. ⁴⁹Dartmouth-Hitchcock Medical Center, Lebanon, NH, USA. ⁵⁰Wake Forest University Health Sciences, Winston-Salem, NC, USA. ⁵¹University of Iowa College of Medicine, Iowa City, IA, USA. ⁵²University of South Florida, Health Byrd Alzheimer's Institute, Tampa, FL, USA. ⁵³Banner Alzheimer's Institute, Phoenix, AZ, USA. ⁵⁴Banner Sun Health Research Institute, Sun City, AZ, USA. ⁵⁵Wien Center, Miami Beach, FL, USA. ⁵⁶Cleveland Clinic Lou Ruvo Center for Brain Health, Cleveland, OH, USA. ⁵⁷Prevent Alzheimer's Disease, Rockville, MD 2020, USA. ⁵⁸National Institute on Aging, Baltimore, MD, USA. ⁵⁹National Institute of Mental Health, Rockville, MD, USA. ⁶⁰AD Drug Discovery Foundation, New York, NY, USA. ⁶¹Acumen Pharmaceuticals, Livermore, CA, USA. ⁶²Premiere Research Institute, Palm Beach Neurology, West Palm Beach, FL, USA. ⁶³U.B.C. Clinic for AD & Related Disorders, Vancouver, BC, Canada. ⁶⁴Cognitive Neurology - St. Joseph's, London, ON, Canada. ⁶⁵Sunnybrook Health Sciences, Vancouver, ON, Canada. ⁶⁶Rhode Island Hospital, Providence, RI, USA. ⁶⁷Butler Hospital, Butler, PA, USA. ⁶⁸Hartford Hospital, Olin Neuropsychiatry Research Center, Hartford, CT, USA. ⁶⁹Dent Neurologic Institute, Orchard Park, NY, USA. ⁷⁰Medical University South Carolina, Charleston, SC, USA. ⁷¹St. Joseph's Health Care, London, ON, Canada. ⁷²Nathan Kline Institute, Orangeburg, NY, USA. ⁷³Neurological Care of CNY, Liverpool, NY, USA. ⁷⁴Parkwood Institute, London, ON, USA. ⁷⁵Richard Frank Consulting, London, UK. ⁷⁶University of London, London, UK. ⁷⁷Eli Lilly and Company, Indianapolis, IN, USA. ⁷⁸Alzheimer's Association, Chicago, IL, USA. ⁷⁹Siemens, Henkestr, DE, Germany