

# UC Irvine

## UC Irvine Previously Published Works

### Title

Identification of Residual Blood Proteins in Ticks by Mass Spectrometry Proteomics

### Permalink

<https://escholarship.org/uc/item/97r655tn>

### Journal

Emerging Infectious Diseases, 14(8)

### ISSN

1080-6059

### Authors

Wickramasekara, Samanthi  
Bunikis, Jonas  
Wysocki, Vicki  
[et al.](#)

### Publication Date

2008-08-01

Peer reviewed

# Identification of Residual Blood Proteins in Ticks by Mass Spectrometry Proteomics

Samanthi Wickramasekara,\*<sup>1</sup> Jonas Bunikis,†<sup>1</sup>  
Vicki Wysocki,\* and Alan G. Barbour†

Mass spectrometry-based proteomics of individual ticks demonstrated persistence of mammalian host blood components, including  $\alpha$ - and  $\beta$ -globin chains, histones, and mitochondrial enzymes, in *Ixodes scapularis* and *Amblyomma americanum* ticks for months after molting. Residual host proteins may identify sources of infection for ticks.

Without transovarial or venereal transmission, a vector-borne pathogen's persistence in nature depends on successful passage between  $\geq 1$  species of vertebrate reservoirs. For Lyme borreliosis in eastern North America, black-legged tick (*Ixodes scapularis*) larvae acquire *Borrelia burgdorferi* from a reservoir host during their first blood meal. Infection persists through subsequent molts, and when a tick feeds for the second time as a nymph it may transmit infection to another competent reservoir or to a human. Reservoir hosts for *B. burgdorferi* are commonly white-footed mice but also include chipmunks, voles, shrews, and ground-foraging birds.

When a tick-borne agent has multiple reservoir hosts, assigning relative contributions of each species to maintenance of the pathogen in the environment may be difficult. One approach is to capture animals, sample blood or tissue for evidence of infection, and examine embedded ticks for the microorganism (1,2). However, this approach is labor- and resource-intensive, and sample sizes are limited. Greater statistical power could be attained with fewer resources if questing ticks were examined not only for infection but also for the source of the last blood meal because the tick would likely have acquired the infection from that vertebrate. If the tick were engorged, this would be straightforward with the PCR, as demonstrated in mosquitoes (3,4). However, host-seeking nymphal hard ticks are flat because their last blood meals were months earlier. Use of PCR to

identify DNA of vertebrate mitochondria in ticks has been reported (5,6), but results lacked full sensitivity (7,8).

An alternative approach is to detect residual proteins from the blood meal. Uptake and retention of host immunoglobulin into the hemolymph of different species of ticks have been documented (9), and Venneström and Jensen found vertebrate actin in *I. ricinus* nymphs weeks after the molt (10). Given these observations, we hypothesized that sufficient host proteins remained in flat ticks for identification of blood meal by using proteins instead of DNA.

## The Study

We used mass spectrometry (MS)-based proteomics, as described by Brečić et al. and Koller et al. (11,12). Individual ticks or pools were pulverized after freezing in liquid nitrogen. Total proteins were precipitated in 95% ethanol at  $-20^{\circ}\text{C}$  and recovered by centrifugation. Proteins of individual ticks were reduced with 100 mmol/L dithiothreitol, alkylated with 50 mmol/L iodoacetamide, digested with trypsin at a final concentration of 0.01  $\mu\text{g}/\mu\text{L}$ , and filtered through a C18 cartridge before being subjected to liquid chromatography (LC) with a 5%–50% acetonitrile gradient in 0.1% formic acid, followed by tandem MS (LC-MS/MS; LTQ ThermoElectron, San Jose, CA, USA). Proteins of pooled ticks were separated by 1-dimensional sodium dodecyl sulfate-polyacrylamide gel electrophoresis, and gel slices were digested in situ with trypsin before using LC-MS/MS. Upwards of  $\approx 7,000$  spectra were submitted to a protein identification algorithm for each pooled sample. Sizes of sequenced peptides ranged from 5 aa to 34 aa. The SEQUEST search algorithm (<http://fields.scripps.edu/sequest>) with data-filtering criteria was used to identify sequence matches of output against databases of rabbit, sheep, deer, goat, mouse (*Mus musculus*), and tick proteins.

We studied *I. scapularis* and the lone-star tick, *Amblyomma americanum*, which is a vector of human monocytic ehrlichiosis in the United States. Ticks were provided by the tick-rearing facility of the Department of Entomology and Plant Pathology of Oklahoma State University (Stillwater, OK, USA). We examined pools of 15 *A. americanum* nymphs that had fed on sheep or rabbits as larvae and were 3 months postmolt. Predominant vertebrate peptides in all pools were  $\alpha$ - and  $\beta$ -globin chains of hemoglobin and immunoglobulins. Sequences of these proteins corresponded to the source of the blood for the ticks. Other mammalian proteins detected in pools from ticks fed on sheep or rabbits were histone H3, histone H2, mitochondrial malate dehydrogenase, glyceraldehyde-3-phosphate dehydrogenase, mitochondrial ATP synthase, interferon regulatory factor,  $\alpha$  tubulin,  $\beta$  tubulin, and transferrin.

We then studied individual ticks that had fed as larvae on mice (*I. scapularis*), rabbits (*A. americanum* and

<sup>†</sup>These authors contributed equally to this article.

\*University of Arizona, Tucson, Arizona, USA; and †University of California Irvine, Irvine, California, USA

*I. scapularis*), or sheep (*A. americanum*) and examined flat nymphs of *A. americanum* at 7 months postmolt and *I. scapularis* at 3–11 months postmolt. We also examined *I. scapularis* adults (2 males and 1 female) that had fed as larvae and nymphs on mice and were 3–5 months postmolt. Concentrations of extracted proteins from individual ticks were 50–70 µg/tick. The Figure shows representative LC-MS/MS spectra of an *A. americanum* nymph that had fed on a sheep as a larva. Panel A shows the tandem mass spectrum for the singly charged peptide AAVTGFWGK, corresponding to residues 8–16 of sheep hemoglobin β-subunit (P02075). Panel B shows the tandem mass spectrum for doubly charged VKVDEVGAEALGR, corresponding to residues 17–29 of the same protein. These 2 peptides cover 15.2% of the protein sequence and differ from the orthologous sequence of rabbit (P02099) at 8 of 22 positions.

The Table summarizes results of all individual tick analyses. There was no correlation between number of proteins detected and postmolt period. Although some proteins, such as immunoglobulin and histone H3, were detected in both species, other proteins distinguished between *A. americanum* and *I. scapularis*. Globin chains were more commonly found in *A. americanum* than in *I. scapularis* nymphs. Cytochrome c-type heme lyase, which binds heme moieties and is transported from the cytoplasm to mitochondria of eukaryotes, was present in all samples of *I. scapularis* but not in *A. americanum* (2-sided  $p < 0.001$ , by likelihood ratio). Peptides detected included those specific for the host animal for the blood meal.

## Conclusions

Digestion of a blood meal in ticks differs from what generally occurs in hematophagous insects. In ticks, digestion takes place gradually within cells of the intestinal tract after endocytosis, rather than by intraluminal enzymatic breakdown of blood cells and plasma components, as in insects (13). The combination of slow assimilation and uptake of some host proteins into hemolymph may explain persistence of host blood proteins for months after feeding and molting. Immunoglobulins in hemolymph have been

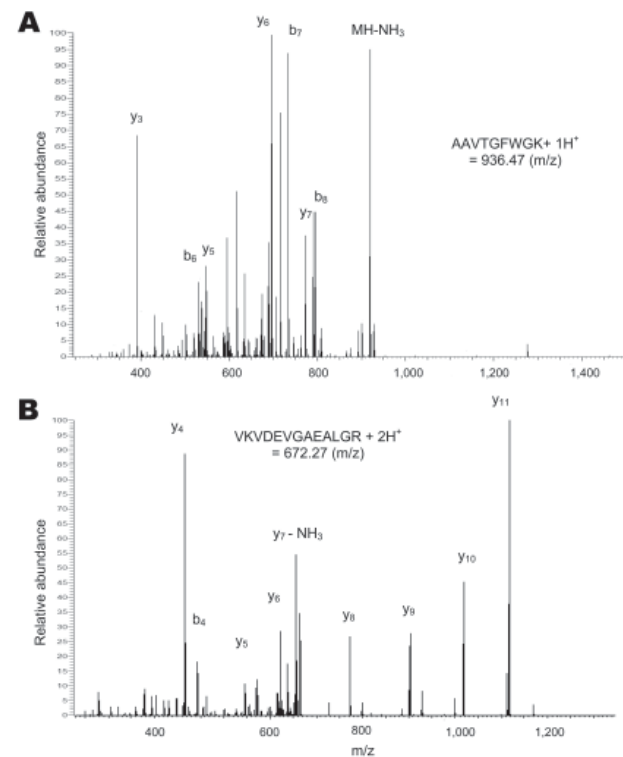


Figure. Tandem mass spectra of 2 peptides from sheep hemoglobin β-subunit identified in a nymph of an *Amblyomma americanum* tick. A) Singly protonated AAVTGFWGK. B) Doubly protonated VKVDEVGAEALGR. The peaks are labeled in the conventional manner: b ions include the N-terminus of the peptide and y ions include the C-terminus, with subscripts indicating the number of amino acid residues in the fragment.

demonstrated, but demonstration of several other proteins, including globin chains, histones, and mitochondrial enzymes, indicates that host protein persistence is not limited to 1 type of molecule.

The success of our study depended on access to a large database of protein sequences for sheep, rabbits, and laboratory mice. For most host species for these ticks in nature, such as the white-footed mouse (*Peromyscus leucopus*),

Table. Vertebrate proteins detected by mass spectrometry in extracts of *Amblyomma americanum* or *Ixodes scapularis* flat ticks

Protein in tryptic digest	No. ticks in which protein was detected/no. examined				
	<i>A. americanum</i> nymphs		<i>I. scapularis</i> nymphs		<i>I. scapularis</i> adults
	Fed on rabbit	Fed on sheep	Fed on rabbit	Fed on mouse	Fed on mouse
Immunoglobulin	3/4	3/4	3/5	4/10	0/3
Globin (α or β)	1/4	3/4	0/5	0/10	3/3
Histone H3	1/4	3/4	3/5	5/10	3/3
Histone H2	3/4	3/4	4/5	6/10	3/3
Tubulin	1/4	2/4	5/5	9/10	3/3
Keratin	0/4	3/4	5/5	7/10	1/3
Actin	1/4	3/4	5/5	10/10	0/3
Cytochrome c-type heme lyase	0/4	0/4	5/5	10/10	3/3
≥1 of above	4/4	4/4	5/5	10/10	3/3

protein databases currently are much less extensive. Thus, a priority before application of this approach is MS-based sequencing of highly prevalent proteins from the blood of *P. leucopus* and other host species. Although LC-MS/MS of individual ticks is feasible and highly sensitive, its cost confines it to exploratory studies. High-throughput analysis of hundreds or thousands of specimens will likely require species-specific assays that use antibodies or aptamers for detection and identification of selected proteins.

Understanding contributions of different vertebrate hosts to pathogen maintenance is a prerequisite for effective monitoring, modeling, and disease prevention efforts that focus on natural reservoirs. Unfortunately, this level of understanding has not been broadly achieved. A major impediment to success in this area for most tick-borne zoonoses has been the absence of reliable and reproducible methods for identification of the vertebrate source of the infection for the tick vector by characterizing residual blood components. Our study shows a way to achieve this goal. Similar data on uninfected ticks would establish the denominator for prevalence studies and indicate the relative competence of different host species.

#### Acknowledgments

We thank Joseph Piesman for providing ticks that were used in pilot studies for this project.

This study was supported by National Institutes of Health grant AI065359 and by a grant from the National Research Fund for Tick-borne Diseases.

Ms Wickramasekara is a doctoral candidate in the Department of Chemistry at the University of Arizona in Tucson. Her research interest is application of advanced mass spectrometry to the proteomics of infectious diseases.

#### References

1. Brisson D, Dykhuizen DE. ospC diversity in *Borrelia burgdorferi*: different hosts are different niches. *Genetics*. 2004;168:713–22. DOI: 10.1534/genetics.104.028738
2. Hanincova K, Kurtenbach K, Diuk-Wasser M, Brei B, Fish D. Epidemic spread of Lyme borreliosis, northeastern United States. *Emerg Infect Dis*. 2006;12:604–11.
3. Kent RJ, Norris DE. Identification of mammalian blood meals in mosquitoes by a multiplexed polymerase chain reaction targeting cytochrome B. *Am J Trop Med Hyg*. 2005;73:336–42.
4. Oshaghi MA, Chavshin AR, Vatandoost H. Analysis of mosquito bloodmeals using RFLP markers. *Exp Parasitol*. 2006;114:259–64. DOI: 10.1016/j.exppara.2006.04.001
5. Kirstein F, Gray JS. A molecular marker for the identification of the zoonotic reservoirs of Lyme borreliosis by analysis of the blood meal in its European vector *Ixodes ricinus*. *Appl Environ Microbiol*. 1996;62:4060–5.
6. Humair PF, Douet V, Cadenas FM, Schouls LM, van de Pol I, Gern L. Molecular identification of bloodmeal source in *Ixodes ricinus* ticks using 12S rDNA as a genetic marker. *J Med Entomol*. 2007;44:869–80. DOI: 10.1603/0022-2585(2007)44[869:MIOBSI]2.0.CO;2
7. Pichon B, Rogers M, Egan D, Gray J. Blood-meal analysis for the identification of reservoir hosts of tick-borne pathogens in Ireland. *Vector Borne Zoonotic Dis*. 2005;5:172–80. DOI: 10.1089/vbz.2005.5.172
8. Morán Cadenas F, Rais O, Humair PF, Douet V, Moret J, Gern L. Identification of host bloodmeal source and *Borrelia burgdorferi* sensu lato in field-collected *Ixodes ricinus* ticks in Chaumont (Switzerland). *J Med Entomol*. 2007;44:1109–17. DOI: 10.1603/0022-2585(2007)44[1109:IOHBSA]2.0.CO;2
9. Jasinskas A, Jaworski DC, Barbour AG. *Amblyomma americanum*: specific uptake of immunoglobulins into tick hemolymph during feeding. *Exp Parasitol*. 2000;96:213–21. DOI: 10.1006/expr.2000.4567
10. Vennestrom J, Jensen PM. *Ixodes ricinus*: the potential of two-dimensional gel electrophoresis as a tool for studying host-vector-pathogen interactions. *Exp Parasitol*. 2007;115:53–8. DOI: 10.1016/j.exppara.2006.05.008
11. Brei L, Hatrup E, Keeler M, Letarte J, Johnson R, Haynes PA. Comprehensive proteomics in yeast using chromatographic fractionation, gas phase fractionation, protein gel electrophoresis, and isoelectric focusing. *Proteomics*. 2005;5:2018–28. DOI: 10.1002/pmic.200401103
12. Koller A, Washburn MP, Lange BM, Andon NL, Deciu C, Haynes PA, et al. Proteomic survey of metabolic pathways in rice. *Proc Natl Acad Sci U S A*. 2002;99:11969–74. DOI: 10.1073/pnas.172183199
13. Sonenshine DE. *Biology of ticks*. New York: Oxford University Press; 1991.

Address for correspondence: Alan G. Barbour, Departments of Microbiology and Molecular Genetics and Medicine, University of California Irvine, 3012 Hewitt, Irvine, CA 92697-4028, USA; email: abarbour@uci.edu

EMERGING INFECTIOUS DISEASES *online*

[www.cdc.gov/eid](http://www.cdc.gov/eid)

To receive tables of contents of new issues send an email to [listserv@cdc.gov](mailto:listserv@cdc.gov) with subscribe eid-toc in the body of your message.