

UCLA

UCLA Previously Published Works

Title

Genetic differences between Asian and Caucasian chronic lymphocytic leukemia

Permalink

<https://escholarship.org/uc/item/9bk9v801>

Journal

International Journal of Oncology, 43(2)

ISSN

1019-6439

Authors

KAWAMATA, NORIHIKO
MOREILHON, CHIMENE
SAITOH, TAKAYUKI
[et al.](#)

Publication Date

2013-07-01

DOI

10.3892/ijo.2013.1966

Peer reviewed

Genetic differences between Asian and Caucasian chronic lymphocytic leukemia

NORIIHIKO KAWAMATA¹, CHIMENE MOREILHON², TAKAYUKI SAITOH³,
MASAMITSU KARASAWA³, BRIAN K. BERNSTEIN¹, AIKO SATO-OTSUBO⁴,
SEISHI OGAWA^{4*}, SOPHIE RAYNAUD^{1*} and H. PHILLIP KOEFFLER^{1,5*}

¹Hematology/Oncology, Cedars-Sinai Medical Center, Los Angeles, CA, USA;

²Center Hospital, University of Nice, Nice, France; ³Gunma University, Maebashi, Gunma;

⁴University of Tokyo, Tokyo, Japan; ⁵National University of Singapore, Singapore

Received December 27, 2012; Accepted February 22, 2013

DOI: 10.3892/ijo.2013.1966

Abstract. Chronic lymphocytic leukemia (CLL) is a common hematological malignancy in Western countries. However, this disease is very rare in Asian countries. It is not clear whether the mechanisms of development of CLL in Caucasians and Asians are the same. We compared genetic abnormalities in Asian and Caucasian CLL using 250k GeneChip arrays. Both Asian and Caucasian CLL had four common genetic abnormalities: deletion of 13q14.3, trisomy 12, abnormalities of ATM (11q) and abnormalities of 17p. Interestingly, trisomy 12 and deletion of 13q14.3 were mutually exclusive in both groups. We also found that deletions of miR 34b/34c (11q), caspase 1/4/5 (11q), Rb1 (13q) and DLC1 (8p) are common in both ethnic groups. Asian CLL more frequently had gain of 3q and 18q. These suggest that classic genomic changes in the Asian and Caucasian CLL are same. Further, we found amplification of IRF4 and deletion of the SP140/SP100 genes; these genes have been reported as CLL-associated genes by previous genome-wide-association study. We have found classic genomic abnormalities in Asian CLL as well as novel genomic alteration in CLL.

Introduction

Development of cancers are affected by a number of factors including environment and genetic background (1). Difference in incidence of certain cancers between Asian and Caucasian populations is well-recognized (2,3). Environmental and/or genetic factors may contribute to these differences. For

example, a high incidence of gastric cancers have been reported in Asian countries including Japan (3,4). However, the incidence of gastric cancers in Japanese immigrants to Hawaii is much lower than the frequency in Japanese in their homeland (4,5). This high incidence of gastric cancer appears to be strongly influenced by environmental factors. In contrast, Asian non-smoking women have a high incidence of non-small cell lung cancer (NSCLC) associated with an EGFR mutation irrespective of the country where they live (6,7), suggesting a germline predisposition for NSCLC with this mutation.

Chronic lymphocytic leukemia (CLL) is a common hematological malignancy in Western countries and it is very rare in Asian countries, including Japan (8-10). Furthermore, Asians including Japanese immigrants to USA continue to have a low incidence of CLL (11,12).

This difference in incidence of CLL between Asians and Caucasians is not clear. One possible explanation for the difference may be that CLL in these two distinct ethnic groups show two distinctly different molecular signatures. Another possible explanation may be that environmental factors, for example an infectious disease, could cause the development of CLL and affect the incidence of this disease in two geographically distinct regions. This seems less likely because Asians in USA also have a low incidence of CLL (11,12). A third possibility is germline variation in the general population of these two ethnic groups leads to the difference in the incidence of the development of CLL.

To identify molecular signatures of Caucasian and Asian CLL at the DNA level, we analyzed these cells using high resolution single nucleotide polymorphism (SNP) genomic oligonucleotide microarrays.

Materials and methods

Samples. Diagnosis of CLL was made based on the updated National Cancer Institute-Working Group guidelines (13). All leukemic cells expressed CD5, CD19 and CD20. Rearrangement of the immunoglobulin heavy chain gene was confirmed by PCR as described previously (14). Detailed information of the Japanese CLL has been reported previously (14). Leukemic cells were collected from 77 cases of Asian CLL (75 Japanese

Correspondence to: Dr Norihiko Kawamata, Hematology/Oncology, Cedars-Sinai Medical Center, 8700 Beverly Blvd., Los Angeles, CA 90048, USA

E-mail: kawamatan@cshs.org

*Contributed equally

Key words: SNP-chip, common genomic changes, caspase, IRF4

Table I. Four common genomic abnormalities in Asian and Caucasian CLL.

	Asian CLL (77)	Caucasian CLL (55)	P-value
13q14 deletion	39 (51%)	26 (48%)	0.60
(sole 13q14 deletion)	12 (16%)	8 (15%)	0.66
11q deletion/UPD	21 (27%)	5 (10%)	<0.01 ^a
17p deletion/UPD	11 (15%)	3 (5%)	0.06
Trisomy 12	15 (20%)	16 (30%)	0.09

Seventy-seven Asian and 55 Caucasian samples of CLL were examined with SNP-chip. Four common genomic abnormalities are tabulated. The number of cases with indicated abnormalities are shown. Sole 13q14 deletion indicates the numbers of cases with only 13q14 deletion genomic abnormality noted on SNP-chip analysis. P-values are also shown. ^aStatistical significance.

and 2 Chinese) and 55 Caucasian CLL after their informed consents were obtained. Institutional committees approved the experiments undertaken. DNA was extracted using Qiagen DNA extraction kit according to the manufacturer's protocol.

SNP-chip analysis. The extracted DNAs were digested with Nsp-I restriction enzyme, amplified and hybridization with GeneChip250NspI chip from Affymetrix. Hybridized signals were captured on GeneChip Scanner 3000 and the data were analyzed by CNAG3.3 software (15,16). Significant differences were analyzed using χ^2 tests. P-values <0.05 were considered statistically significant.

Results

Caucasian and Asian CLL shared the major genomic copy number changes. We analyzed 55 cases of Caucasian CLL and 77 cases of Asian CLL and found a number of genomic abnormalities in both groups. The four well characterized genomic abnormalities of CLL, including deletion of 13q14, trisomy 12, deletion/UPD of 17p and deletion/UPD of 11q (ATM) (17,18), were detected in both groups at a comparable frequency except for deletion/UPD of 11q. Asian v/s Caucasian CLL had deletion of 13q14.3 (Asian: 39 cases, 51%; Caucasian: 26 cases, 48%), trisomy 12 (Asian: 15 cases, 20%; Caucasian: 16 cases, 30%), abnormalities of 11q (Asian: 21 cases, 27%; Caucasian: 5 cases, 10%) and abnormalities of 17p (Asian: 11 cases, 15%; Caucasian: 3 cases, 5%) (Table I). Only the frequency of 11q was statistically different (P<0.01). Interestingly, deletion of 13q14 and trisomy 12 was mutually exclusive in Asian CLL cases (no cases with both trisomy 12 and 13q14 in the 77 Asian CLL) and nearly same in Caucasian CLL (2 of the 55).

Other genomic alterations involved four regions: trisomy 3/duplication of 3q; trisomy 18/duplication of 18q; deletion of 18p; and deletion of 8p (Table II). Asians more frequently had either trisomy 3/duplication (dup) of 3q or trisomy 18/dup18q compared to the Caucasian CLL samples (18 Asian v.s. 0 Caucasian CLL sample) (Table II).

Table II. Other common genomic abnormalities found in Asian and Caucasian CLL.

	Asian CLL (77)	Caucasian CLL (55)	P-value
Trisomy 3/Dup 3q	6 (8%)	0 (0%)	<0.01 ^a
Trisomy 18/Dup 18q	8 (11%)	0 (0%)	<0.01 ^a
Del 8p	4 (7%)	1 (2%)	0.11
Del 18p	3 (4%)	3 (5%)	0.47

The number of cases with indicated abnormalities are shown. P-values are also shown. ^aStatistical significance.

Novel candidate target genes associated with development of CLL. In this study, we found novel tumor suppressor candidate genes often deleted in CLL. Deletion of 11q is frequently detected in CLL, involving the ATM gene (26/132 cases in total); however, of interest, these 26 cases also had deletion of the microRNA (miR) 34b/34c (Fig. 1A and data not shown). A second novel finding was a homozygous deletion of 11q22.3 involving caspase 1/4/5 genes in an Asian CLL sample (Fig. 1A); and seven additional cases had hemizygous deletion of these caspase genes (Fig. 1A).

The third finding was near the well-known commonly deleted region at 13q14.3 (65 cases in total) involving miR 15-a and 16-1 (Table I and Fig. 1B). One case had two distinct deletions in this region; one involved miR 15-a and 16-1; and the other encompassed the Rb1 gene (Asian CLL #23 in Fig. 1B). On close inspection, 36% of cases with deletion of 13q (23/65 cases), had a deletion of Rb1, suggesting that Rb1 might be another target of deletion of 13q in CLL.

Fourth, we found that deletion of 8p was common in CLL (5 cases) (Table II and Fig. 1C). One Asian-CLL had a very small deletion only spanning the DLC1 gene (Asian-CLL #17, Fig. 1C). The DLC1 gene may be one of the target genes in those samples with deletion of 8p in CLL.

CLL-associated genes are genomically abnormal in CLL samples. One Asian-CLL sample had high copy number amplification of IRF4 (Fig. 2A). Also, we found that SP140/SP100 genes were deleted in two Asian and one Caucasian CLL samples (Fig. 2B).

A previous genome-wide association study (GWAS) identifies SNP sites related to Caucasian CLL (19), including SNP-rs872071 (6p25.3) located close to IRF4 gene and SNP-rs13397985 (2q37.1) located close to the SP140/SP100 genes.

Discussion

CLL is extremely rare in Asians (10-12). We have for the first time, analyzed a large number of Asian CLL samples, using high resolution SNP-chips. Well-known common genomic abnormalities (17,18) occurred in Asian CLL at a comparable frequency as Caucasian CLL except for deletion/UPD of 11q. Thus, the classic genomic abnormalities of CLL in these two ethnic groups are similar at the DNA level. However, the Asian

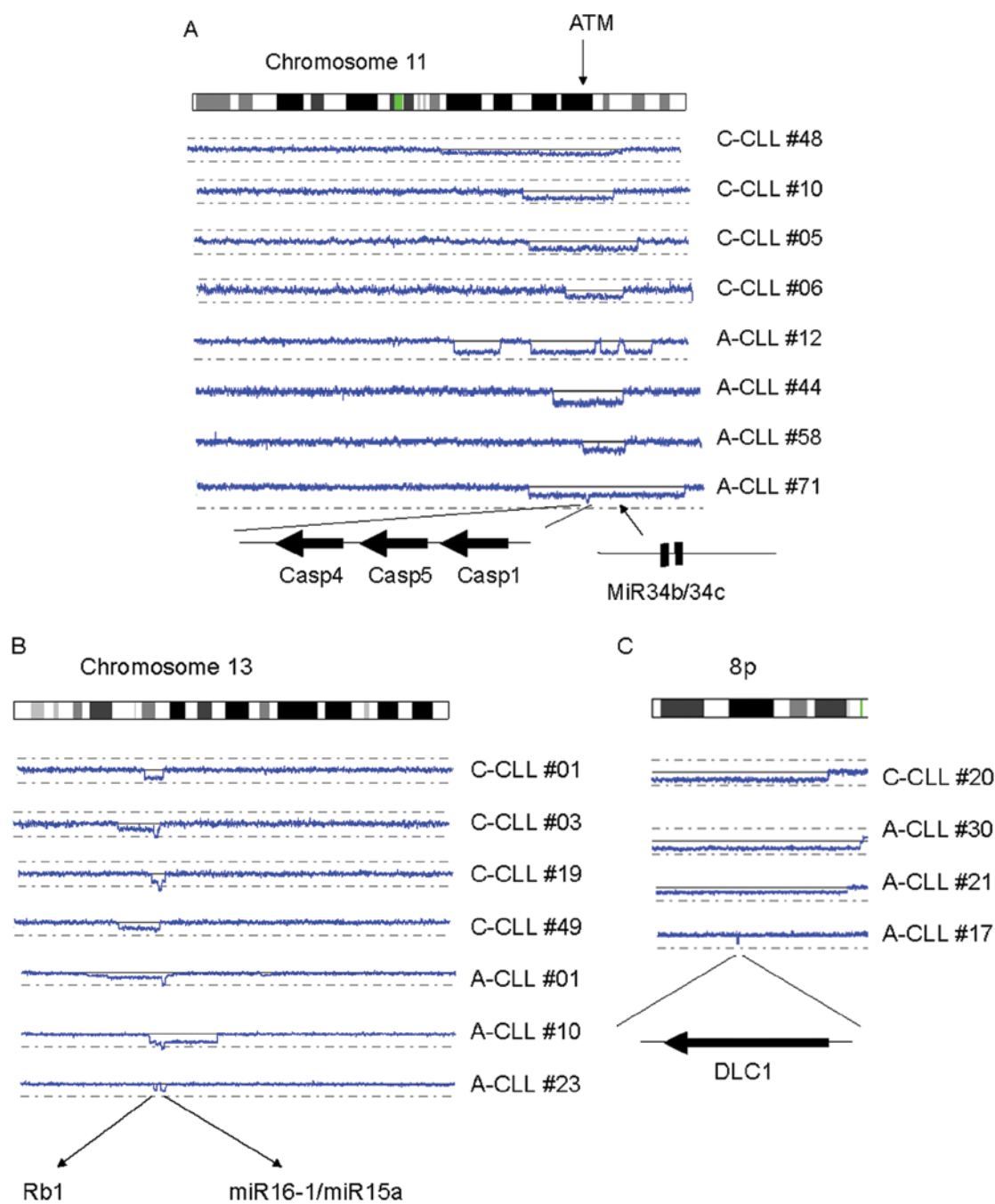


Figure 1. Novel common target candidate genes in CLL. (A) Representative CLL cases with deletion of 11q. SNP-chip analysis (blue lines) is shown with a scheme of the chromosome (top), individual CLL samples and their altered genes (bottom). The arrow on the chromosome panel indicates the position of the ATM gene. At the bottom, the three large arrows show the direction of transcription of the target genes; and the diagonal arrow designates the position of the microRNAs, miR 34b/34c. The CLL case numbers are shown on the right side (A, Asian; C, Caucasian). (B) Representative CLL cases with deletion of 13q. The results of SNP-chip analysis (blue lines) are shown together with the scheme of the chromosome (top). Arrows at the bottom indicate the positions of RB1 gene and the microRNAs, miR 15-a/16-1. The case numbers are shown on the right side (A, Asian; C, Caucasian). (C) Representative CLL cases with deletion of 8p. The result of SNP-chip analysis (blue lines) is shown with the scheme of the chromosome (top) and genes (bottom). The arrow indicates the direction of transcription of the DLC1 gene. The case numbers are shown on the right side (A, Asian; C, Caucasian).

CLL had trisomy 3/duplication of 3q and trisomy 18/duplication of 18q more frequently than Caucasian CLL samples, suggesting that the mechanism of development of CLL in Asians is slightly different from Caucasian CLL.

The 18q region contains the BCL2 gene. BCL2 is associated with an anti-apoptotic effect and the gene is often overexpressed in CLL (20,21). CLL-related loss of 13q14, deletes miR15-a/miR 16-1 (22-24). These two microRNAs

target BCL2 and their deletion causes high expression of BCL2 (24,25). Trisomy 18/duplication of 18q may be an alternative mechanism to overexpress BCL2. Also, the 3q region contains BCL6 (26,27), whose protein antagonizes the TP53 tumor suppressor gene (27,28).

Seven cases had an 8p deletion (3/77 Asian CLL, 1/55 Caucasian CLL); and the minimally commonly deleted region involved DLC1. In fact, one sample (Asian-CLL 17)

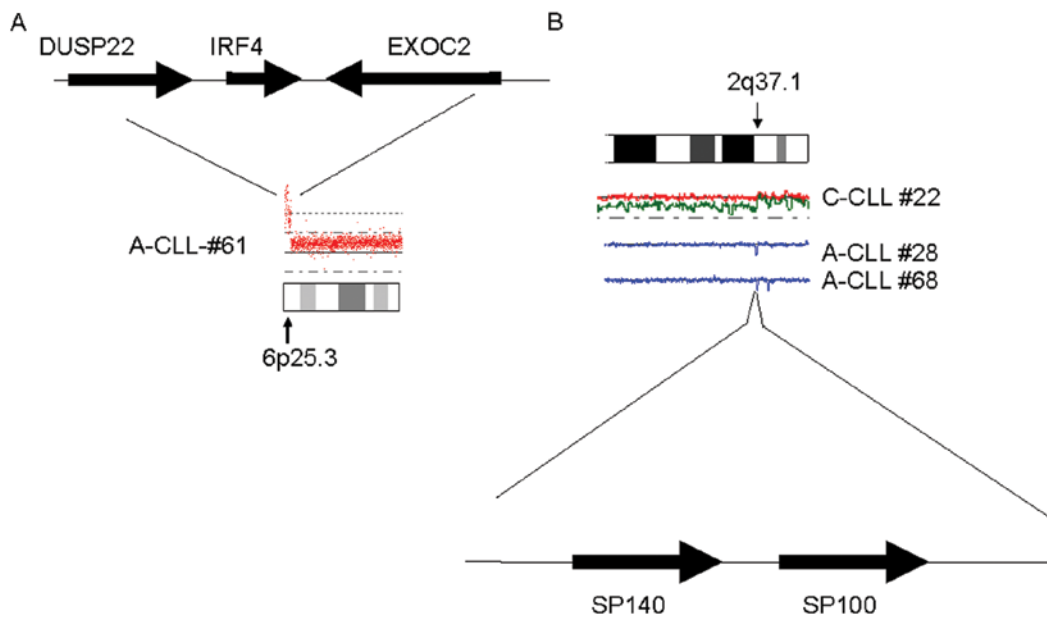


Figure 2. Genes close to high-risk SNP sites are targets for genomic alterations in CLL. (A) CLL with amplification of IRF4. The result of SNP-chip analysis (orange dots) is shown with the scheme of the chromosome (bottom) and genes (top). An arrow on the chromosome panel shows the position of the 6p25.3 involving the IRF4 gene. Arrows on the top panel indicate the direction of transcription of the genes. The case number is shown on the left side (A, Asian). (B) CLL cases with deletion of SP140. The result of SNP-chip analysis (blue lines or red/green lines) is shown with the scheme of the chromosome (top). An arrow on the chromosome panel indicates the position of 2q37.1 involving SP140. Arrows and their diagonal lines at the bottom indicate the direction of transcription and location of SP100/SP140 genes. The case numbers are shown on the right side (A, Asian; C, Caucasian).

had a deletion that only involved the *DLC1* gene. This gene encodes the GAP protein and plays an important role in the RAS/MAP pathway in a manner similar to *NF1* (29,30). This gene is frequently deleted in a variety of cancers (30-33). Our data suggest that dysregulation of RAS/MAP signal pathway occurs in CLL. Reagents targeting this signaling pathway could be a promising treatment option for these CLL cases.

Deletion of 8p, duplication of 3q and duplication of 18q are also frequently detected in other types of B-cell malignancies including lymphomas (34,35). Although a variety of B-cell lymphoid malignancies have their distinct clinical features (36), they may have dysregulation of common signaling pathways. Identification of molecular signatures by SNP-chip may lead to re-classification of B-cell malignancies and guide clinicians to select optimal therapeutic options targeting the dysregulated signaling pathways.

In this study, we also found novel candidate target genes in altered chromosomal regions, which may be involved in development of CLL. We found that *Rb1* on the 13q chromosome is frequently deleted when 13q14 is deleted (Fig. 1B). This was especially evident in the sample, A-CLL #23, which had two distinct deletions in 13q; one targeting 13q14 (*miR15-a/miR16-1*) and the other targeting *RBI1*. Thus, *Rb1* may be another tumor suppressor gene on 13q that is altered in CLL. In addition, a homozygous deletion of three gene family (*Casp1/4/5*) occurred at 11q in A-CLL #71. Both *ATM* and *miR34b/34c* genes are on 11q and are frequently deleted in CLL. A short distance away are these three caspase genes which can also be target genes of this common deleted regions. *Casp1/4/5* are components of the inflammasome associated with inflammation and cell growth (37,38). Deletion of these genes may cause an abnormal response of leukemic cells to the

immuno-surveillance system, allowing proliferation of the leukemic cells.

GWAS co-relates presence or absence of a disease with the patterns of SNPs in large populations, leading to identification of high-risk alleles strongly associated with development of the disease (39,40). Interestingly, the genes close to these CLL-associated SNP-sites (*IRF4* and *SP140/SP100*) are moderately often mutated (deleted/amplified) in CLL.

In conclusion, we found that: i) the fundamental molecular signatures of CLL in the Caucasian and Asian populations are fairly similar; ii) novel candidate target genes in commonly altered genomic regions include *Rb1*, *Casp1/4/5*, *DLC1*, *IRF4* and *SP140/SP100*; iii) CLL-associated genes identified by the previous GWAS were moderately often mutated in CLL. These findings will help to re-classify CLL based on their molecular signatures and lead to individualized treatment for CLL with reagents targeting signaling pathways which are altered in each patient.

Acknowledgments

This study was supported by NIH grants R01CA02603831 and U54CA143930 and A* STAR Investigator Grant to H.P.K and the Tower Cancer Foundation and NIH grant GM008243 to N.K. We thank Rocio Alvarez for technical assistance.

References

- DeVita VT, Lawrence TS, Rosenberg SA, DePinho RA and Weinberg RA: DeVita, Hellman, and Rosenberg's Cancer: Principles and Practice of Oncology. 8th edition. Lippincott Williams & Wilkins, 2009.

2. Eley JW, Hill HA, Chen VW, *et al*: Racial differences in survival from breast cancer. Results of the National Cancer Institute Black/White Cancer Survival Study. *JAMA* 272: 947-954, 1994.
3. GLOBOCAN 2008/Cancer Incidence and Mortality Worldwide in 2008. International Agency for Research on Cancer. World Health Organization. <http://globocan.iarc.fr/>
4. Tsugane S and Sasazuki S: Diet and the risk of gastric cancer: review of epidemiological evidence. *Gastric Cancer* 10: 75-83, 2007.
5. Dunn JE: Cancer epidemiology in populations of the United States - with emphasis on Hawaii and California - and Japan. *Cancer Res* 35: 3240-3245, 1975.
6. Jänne PA, Engelman JA and Johnson BE: Epidermal growth factor receptor mutations in non-small-cell lung cancer: implications for treatment and tumor biology. *J Clin Oncol* 23: 3227-3234, 2005.
7. Bell DW, Lynch TJ, Haserlat SM, *et al*: Epidermal growth factor receptor mutations and gene amplification in non-small-cell lung cancer: molecular analysis of the IDEAL/INTACT gefitinib trials. *J Clin Oncol* 23: 8081-8092, 2005.
8. Rai KR and Keating MJ: *Chronic Lymphocytic Leukemia*. Chapter 127. *Cancer Medicine*. 6th edition. BC Decker, Hamilton, ON, 2000.
9. Redaelli A, Laskin BL, Stephens JM, Botteman MF and Pashos CL: The clinical and epidemiological burden of chronic lymphocytic leukaemia. *Eur J Cancer Care* 13: 279-287, 2004.
10. SEER Stat Fact Sheets: Chronic Lymphocytic Leukemia. Surveillance epidemiology and end of results. National Cancer Institute. <http://seer.cancer.gov/statfacts/html/clyl.html>
11. Gale RP, Cozen W, Goodman MT, Wang FF and Bernstein L: Decreased chronic lymphocytic leukemia incidence in Asians in Los Angeles County. *Leuk Res* 24: 665-669, 2000.
12. Pan JW, Cook LS, Schwartz SM and Weis NS: Incidence of leukemia in Asian migrants to the United States and their descendants. *Cancer Causes Control* 13: 791-795, 2002.
13. Hallek M, Cheson BD, Catovsky D, *et al*: Guidelines for the diagnosis and treatment of chronic lymphocytic leukemia: a report from the International Workshop on Chronic Lymphocytic Leukemia updating the National Cancer Institute-Working Group 1996 guidelines. *Blood* 111: 5446-5456, 2008.
14. Nakahashi H, Tsukamoto N, Hashimoto Y, *et al*: Characterization of immunoglobulin heavy and light chain gene expression in chronic lymphocytic leukemia and related disorders. *Cancer Sci* 100: 671-677, 2009.
15. Kawamata N, Ogawa S, Gueller S, *et al*: Identified hidden genomic changes in mantle cell lymphoma using high-resolution single nucleotide polymorphism genomic array. *Exp Hematol* 37: 937-946, 2009.
16. Yamamoto G, Nannya Y, Kato M, *et al*: Highly sensitive method for genomewide detection of allelic composition in nonpaired, primary tumor specimens by use of affymetrix single-nucleotide-polymorphism genotyping microarrays. *Am J Hum Genet* 81: 114-126, 2007.
17. Lehmann S, Ogawa S, Raynaud SD, *et al*: Molecular allelokaryotyping of early-stage, untreated chronic lymphocytic leukemia. *Cancer* 112: 1296-1305, 2008.
18. Caporaso N, Goldin L, Plass C, *et al*: Chronic lymphocytic leukaemia genetics overview. *Br J Haematol* 139: 630-634, 2007.
19. Di Bernardo MC, Crowther-Swanepoel D, Broderick P, *et al*: A genome-wide association study identifies six susceptibility loci for chronic lymphocytic leukemia. *Nat Genet* 40: 1204-1210, 2008.
20. Kitada S, Andersen J, Akar S, *et al*: Expression of apoptosis-regulating proteins in chronic lymphocytic leukemia: correlations with in vitro and in vivo chemoresponses. *Blood* 91: 3379-3389, 1998.
21. Majid A, Tsoulakis O, Walewska R, *et al*: BCL2 expression in chronic lymphocytic leukemia: lack of association with the BCL2 938A>C promoter single nucleotide polymorphism. *Blood* 111: 874-877, 1998.
22. Calin GA, Dumitru CD, Shimizu M, *et al*: Frequent deletions and down-regulation of micro-RNA genes miR15 and miR16 at 13q14 in chronic lymphocytic leukemia. *Proc Natl Acad Sci USA* 99: 15524-15529, 2002.
23. Calin GA, Ferracin M, Cimmino A, *et al*: A MicroRNA signature associated with prognosis and progression in chronic lymphocytic leukemia. *N Engl J Med* 353: 1793-1801, 2005.
24. Calin GA and Croce CM: Chronic lymphocytic leukemia: interplay between noncoding RNAs and protein-coding genes. *Blood* 114: 4761-4770, 2009.
25. Cimmino A, Calin GA, Fabbri M, *et al*: miR-15 and miR-16 induce apoptosis by targeting BCL2. *Proc Natl Acad Sci USA* 102: 13944-13949, 2006.
26. Abramson JS and Shipp MA: Advances in the biology and therapy of diffuse large B-cell lymphoma: moving toward a molecularly targeted approach. *Blood* 106: 1164-1174, 2005.
27. Basso K and Dalla-Favera R: BCL6: master regulator of the germinal center reaction and key oncogene in B cell lymphomagenesis. *Adv Immunol* 105: 193-210, 2010.
28. Phan RT and Dalla-Favera R: The BCL6 proto-oncogene suppresses p53 expression in germinal-centre B cells. *Nature* 432: 635-639, 2004.
29. Ching YP, Wong CM, Chan SF, *et al*: Deleted in liver cancer (DLC) 2 encodes a RhoGAP protein with growth suppressor function and is underexpressed in hepatocellular carcinoma. *J Biol Chem* 278: 10824-10830, 2003.
30. Lahoz A and Hall A: DLC1: a significant GAP in the cancer genome. *Genes Dev* 22: 1724-1730, 2008.
31. Yin XL, Pang JC and Ng HK: Identification of a region of homozygous deletion on 8p22-23.1 in medulloblastoma. *Oncogene* 21: 1461-1468, 2002.
32. Yuan BZ, Jefferson AM, Baldwin KT, Thorgeirsson SS, Popescu NC and Reynolds SH: DLC-1 operates as a tumor suppressor gene in human non-small cell lung carcinomas. *Oncogene* 23: 1405-1411, 2004.
33. Zender L, Xue W, Zuber J, *et al*: An oncogenomics-based in vivo RNAi screen identifies tumor suppressors in liver cancer. *Cell* 135: 852-864, 2008.
34. Rinaldi A, Mian M, Chigrinova E, *et al*: Genome-wide DNA profiling of marginal zone lymphomas identifies subtype-specific lesions with an impact on the clinical outcome. *Blood* 117: 1595-1604, 2011.
35. Tagawa H, Suguro M, Tsuzuki S, *et al*: Comparison of genome profiles for identification of distinct subgroups of diffuse large B-cell lymphoma. *Blood* 106: 1770-1777, 2005.
36. Swerdlow SH, Campo E, Harris NL, *et al*: *WHO Classification of Tumours of Haematopoietic and Lymphoid Tissues*. 4th edition. World Health Organization, 2008.
37. **Martinon F and Tschopp J: Inflammatory caspases and inflammasomes: master switches of inflammation.** *Cell Death Differ* 14: 10-22, 2007.
38. Davis BK, Wen H and Ting JP: The inflammasome NLRs in immunity, inflammation, and associated diseases. *Annu Rev Immunol* 29: 707-735, 2011.
39. Altshuler D, Daly MJ and Lander ES: Genetic mapping in human disease. *Science* 322: 881-888, 2008.
40. Clifford RJ, Edmonson MN, Nguyen C, Scherpbier T, Hu Y and Buetow KH: Bioinformatics tools for single nucleotide polymorphism discovery and analysis. *Ann NY Acad Sci* 1020: 101-109, 2004.