

UCSF

UC San Francisco Previously Published Works

Title

Longevity factor klotho enhances cognition in aged nonhuman primates.

Permalink

<https://escholarship.org/uc/item/9br3t0v4>

Journal

Nature Aging, 3(8)

Authors

Castner, Stacy

Gupta, Shweta

Wang, Dan

et al.

Publication Date

2023-08-01

DOI

10.1038/s43587-023-00441-x

Peer reviewed

Longevity factor *klotho* enhances cognition in aged nonhuman primates

Received: 30 November 2021

Accepted: 23 May 2023

Published online: 3 July 2023

 Check for updates

Stacy A. Castner¹, Shweta Gupta², Dan Wang², Arturo J. Moreno², Cana Park², Chen Chen², Yan Poon³, Aaron Groen³, Kenneth Greenberg³, Nathaniel David³, Tom Boone⁴, Mark G. Baxter⁵, Graham V. Williams¹ & Dena B. Dubal² ✉

Cognitive dysfunction in aging is a major biomedical challenge. Whether treatment with *klotho*, a longevity factor, could enhance cognition in human-relevant models such as in nonhuman primates is unknown and represents a major knowledge gap in the path to therapeutics. We validated the rhesus form of the *klotho* protein in mice showing it increased synaptic plasticity and cognition. We then found that a single administration of low-dose, but not high-dose, *klotho* enhanced memory in aged nonhuman primates. Systemic low-dose *klotho* treatment may prove therapeutic in aging humans.

Cognition is a highly valued and central manifestation of brain function eroded by aging and age-related disease such as Alzheimer's disease. With the world's population rapidly aging, cognitive deficits have become a major biomedical challenge in need of effective pharmacological interventions.

Klotho (KL) is a longevity factor that declines in aging^{1,2}. Elevating KL boosts cognitive functions in mice through transgenic overexpression^{3,4} and acute peripheral administration^{5,6}. KL (secreted α -*klotho*) circulates as a hormone following cleavage from its transmembrane form and impacts insulin⁷ and fibroblastic growth factor (FGF) signaling⁸, Wnt⁹ and *N*-methyl-D-aspartate receptor (NMDAR) functions³⁻⁵. Systemic elevation of KL in mice increases synaptic plasticity, cognition and neural resilience to aging, Alzheimer's and Parkinson disease-related toxicities^{3,10-14}. Notably, systemic administration of KL does not cross the blood-brain barrier as measured by autoradiography¹⁵ and His-tagged protein studies⁵. Human relevance for KL in brain health is supported by studies showing that individuals with elevated KL, due to genetic *KLOTHO* variation or other reasons, demonstrate better cognition, attenuated neuropathological measures or decreased dementia risk in aging and Alzheimer's disease^{3,16-25}.

Historically, mice have provided insights translating into important medicines^{26,27}, indicating their importance in the discovery process; however, in paths to new cognitive treatments for humans, additional studies of animal models with increased genetic, anatomical and functional complexity of the brain, such as in aging nonhuman

primates (NHPs), may prove critical. Whether KL treatment could enhance cognition in aging NHPs is unknown and represents a major knowledge gap.

We sought to test whether a low-dose, subcutaneous administration of KL could, in parallel to mice^{5,6}, boost cognition in aged rhesus macaques, a type of NHP. Use of rhesus macaques circumvents certain limitations of mouse models, as they share 93%²⁸ (versus 70%) phylogenetic similarity to humans, harbor similar or more genetic diversity than humans and demonstrate complex higher-order cognitive functions. Like humans, rhesus macaques undergo age-induced cognitive decline with synaptic changes, without significant neuronal loss, impairing brain regions, including the hippocampus²⁹ and prefrontal cortex (PFC)³⁰. Targeted earlier by aging³¹, the PFC subserves executive functions such as working memory and, in rhesus macaques, shows age-induced deficits in neuronal firing³², regulated protein kinase C (PKC) activity^{33,34}, neurotransmitter balance^{35,36} and structural decline^{30,37}.

Our primary goal was to test whether a KL dose in rhesus macaques that increases serum levels to a range present during the human lifespan, and is comparable to therapeutically effective increases in mice, can enhance cognition. Our secondary goal was to explore higher KL doses in rhesus macaques to test whether KL-mediated benefits on cognition could be dose-dependent.

We first generated the rhesus macaque form of the KL protein (96% homologous to human KL) and functionally validated its activity using assays in mice. This was the secreted, hormonal form (and not

¹Department of Psychiatry and VA Connecticut Healthcare System, Yale School of Medicine, West Haven, CT, USA. ²Department of Neurology and Weill Institute for Neurosciences, University of California, San Francisco, CA, USA. ³Unity Biotechnology, Brisbane, CA, USA. ⁴Tom Boone Consulting, Newbury Park, CA, USA. ⁵Section on Comparative Medicine, Department of Pathology, Wake Forest University School of Medicine, Winston-Salem, NC, USA.

✉ e-mail: Dena.Dubal@ucsf.edu

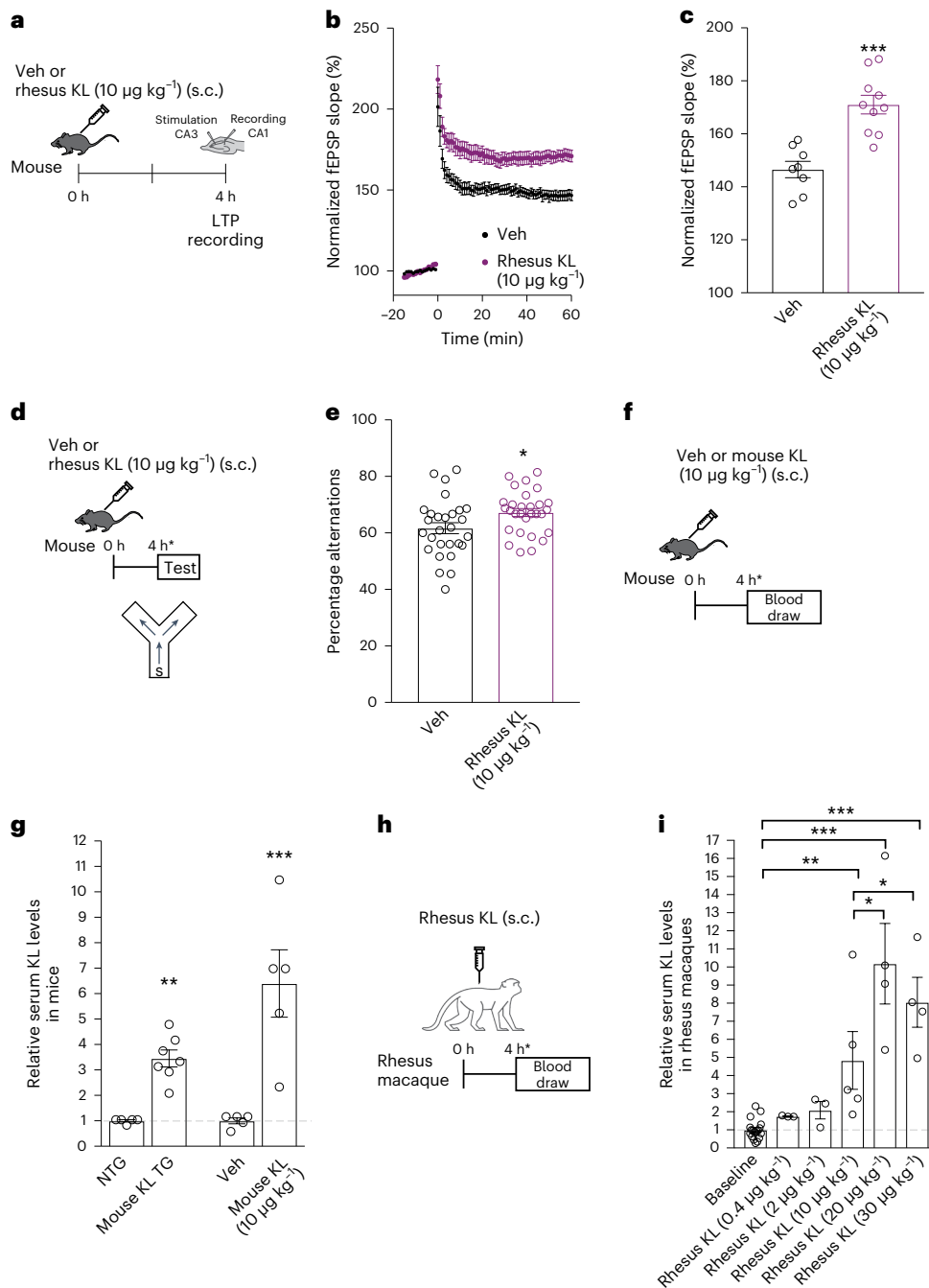


Fig. 1 | Rhesus klotho is biologically active and increases serum KL levels in aged rhesus macaques. **a**, Paradigm of hippocampal LTP recordings from young male mice treated with either vehicle (Veh) or rhesus KL ($10 \mu\text{g kg}^{-1}$, s.c.). **b**, Field excitatory post-synaptic potential (fEPSP) recordings from acute hippocampal slices of mice (age 3 months) ($n = 8$ biologically independent slices from three mice for Veh; ten biologically independent slices from three mice for rhesus KL). **c**, Average fEPSP slope of the last 10 min of recordings from slices of mice (same as **b**). $***P < 0.0001$ (two-tailed Student's *t*-test); if biological unit is mouse, $**P = 0.0039$ (two-tailed Student's *t*-test). **d**, Paradigm for testing male mice (age 4 months) in the small Y maze following treatment with Veh or rhesus KL ($10 \mu\text{g kg}^{-1}$, s.c.). **e**, Percent alternations of mice ($n = 28$ mice, Veh; $n = 29$ mice, KL). Two independent cohorts combined. $*P = 0.0243$ (two-tailed Student's *t*-test; $*P = 0.0249$ KL effect, accounting for cohort by linear regression two-tailed *t*-test). **f**, Paradigm for measuring serum KL levels in young male mice (age 4 months) 4 h following treatment with Veh or mouse KL ($10 \mu\text{g kg}^{-1}$, s.c.).

g, Relative KL serum levels from nontransgenic (NTG) and KL transgenic overexpressing (KL TG) mice alongside serum from young mice (age 4 months) 4 h following treatment with Veh or mouse KL ($10 \mu\text{g kg}^{-1}$, s.c.) ($n = 5$ mice in each group of NTG, Veh, KL; $n = 7$ mice, KL TG). $**P < 0.0001$ versus NTG (two-tailed *t*-test), $***P = 0.0036$ versus Veh (two-tailed *t*-test). **h**, Paradigm for measuring serum KL levels in aged rhesus macaques 4 h following treatment with Veh or varying doses of rhesus KL. **i**, Relative KL serum levels of aged rhesus macaques at baseline and following varying doses of KL (baseline, $n = 19$ monkeys; $n = 14$ female, $n = 5$ male; KL dosing, $n = 3$ monkeys in each group at 0.4 and $2 \mu\text{g kg}^{-1}$; $n = 4$ monkeys in each group at 20 and $30 \mu\text{g kg}^{-1}$; $n = 5$ monkeys at $10 \mu\text{g kg}^{-1}$; all female except one male at $10 \mu\text{g kg}^{-1}$). Values relative to baseline. $*P = 0.0479$ (KL $20 \mu\text{g kg}^{-1}$) and $*P = 0.0508$ (KL $30 \mu\text{g kg}^{-1}$) (one-tailed, one-sample *t*-tests versus KL $10 \mu\text{g kg}^{-1}$); $**P = 0.0046$ and $***P < 0.0001$ versus baseline (two-tailed, Bonferroni-corrected). Data are represented as mean \pm s.e.m.

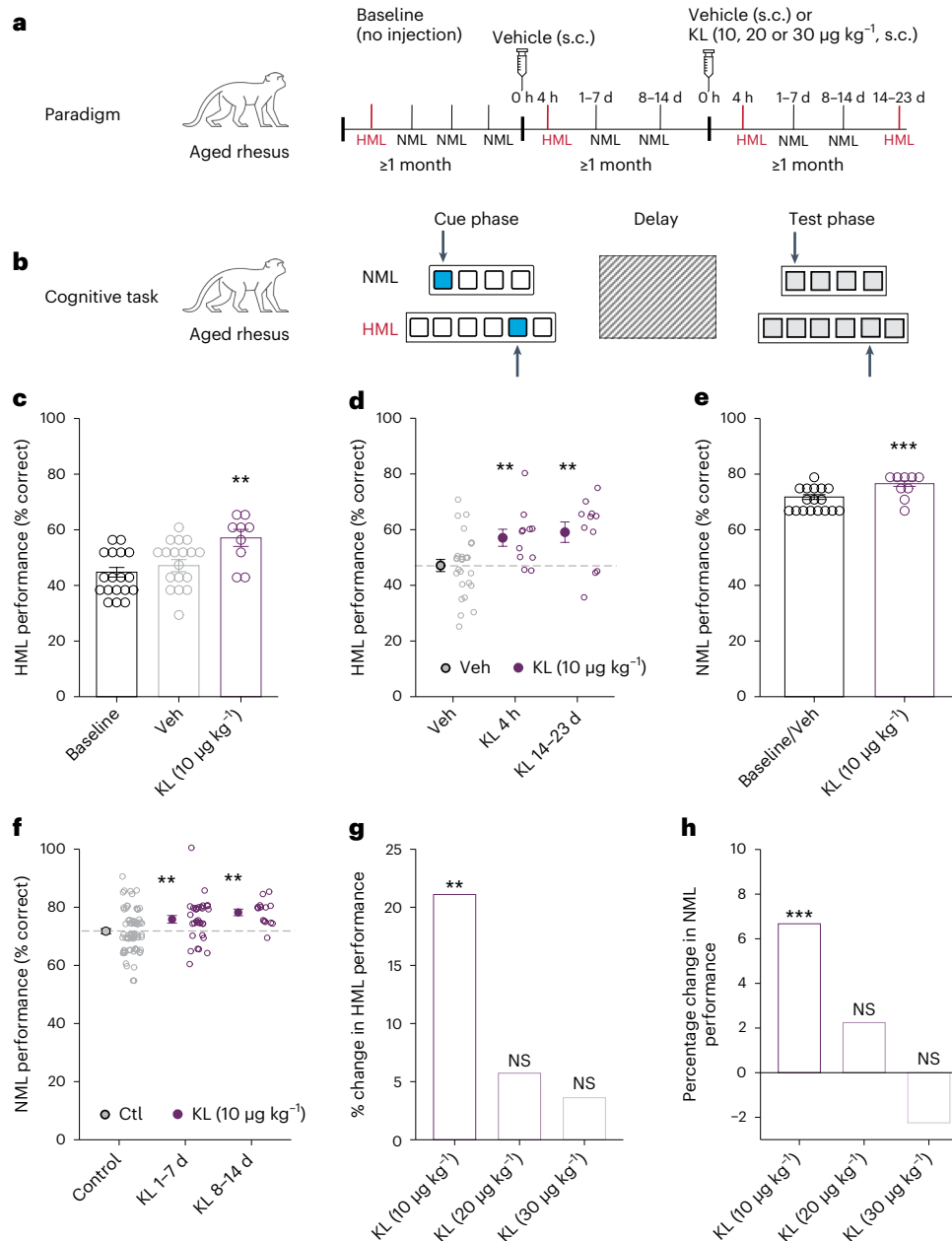


Fig. 2 | Rhesus KL enhances cognition in aged rhesus macaques. a, Paradigm for testing aged rhesus macaques (age 15–28 years; $n = 18$ monkeys; 13 females and 5 males) in a spatial delayed memory task following treatment with Veh or rhesus KL (Supplementary Table 1 shows testing in each monkey). **b**, Diagram of the SDR cognitive task. Monkey is shown food reward (cue phase), screen is lowered (delay) and then screen is raised with all wells covered (test phase). Remembering location of hidden reward in NML and HML (more wells and longer delays) was measured. **c**, Percent correct choices by monkeys, representing spatial and working memory, in HML task at baseline ($n = 19$ sessions from 18 monkeys; 13 females and 5 males), at 4 h following treatment with Veh ($n = 26$ sessions from 18 monkeys; 13 females and 5 males) or rhesus KL ($10 \mu\text{g kg}^{-1}$) ($n = 11$ sessions from 9 monkeys; 6 females and 3 males). $**P = 0.0077$ versus Veh (linear mixed-model ANOVA and Satterthwaite’s t -tests using sessions, two-tailed). Bars represent mean \pm s.e.m. of test sessions; points are mean performance of each monkey. **d**, Percent correct choices by monkeys in the HML task 4 h and 14–23 d after a single injection with Veh or rhesus KL ($10 \mu\text{g kg}^{-1}$). n , same as Fig. 1c. $**P = 0.0077$ (4 h), $**P = 0.0035$ (14–23 d) versus Veh (linear mixed-model ANOVA and Satterthwaite’s t -tests using sessions, two-tailed). Points indicate sessions. Filled circles are mean \pm s.e.m. of sessions. Dashed line shows mean Veh performance. **e**, Percent correct choices by monkeys in NML task 1–14 d after baseline or vehicle treatment ($n = 71$ sessions from 17 monkeys; 12 females and 5 males) or rhesus KL ($10 \mu\text{g kg}^{-1}$) ($n = 46$ sessions from 9 monkeys; 6 females and 3 males), $***P = 0.0006$

versus Veh + baseline (linear mixed-model ANOVA and Satterthwaite’s t -tests using session, two-tailed). Points show mean performance of each monkey. Bars represent mean \pm s.e.m. of test sessions. **f**, Percent correct choices by monkeys in NML task averaged over the first and second weeks after baseline or Veh treatment (Ctl) (n , same as Fig. 1e) or rhesus KL ($10 \mu\text{g kg}^{-1}$) (n , same as Fig. 1e; 32 sessions between 1–7 d and 14 sessions between 8–14 d), $**P = 0.0080$ (1–7 d) and $**P = 0.0021$ (8–14 d) versus Veh + baseline (linear mixed-model ANOVA and Satterthwaite’s t -tests using sessions, two-tailed). Points indicate sessions. Filled circles indicate mean \pm s.e.m. of sessions. Dashed line shows mean control performance. **g**, Percent increase in cognition in HML task at varying doses of rhesus KL treatment at $10 \mu\text{g kg}^{-1}$ averaged over the course of testing ($n = 11$ sessions from 9 monkeys; 6 female and 3 male), $20 \mu\text{g kg}^{-1}$ ($n = 7$ sessions from 7 monkeys; 5 female and 2 male) or $30 \mu\text{g kg}^{-1}$ ($n = 13$ sessions from 13 monkeys; 9 females and 4 males) compared to Veh treatment ($n = 26$ sessions from 18 monkeys; 13 females and 5 males). $**P = 0.0077$ versus Veh (linear mixed-model ANOVA and Satterthwaite’s t -tests using sessions, two-tailed). **h**, Percent increase in cognition in NML task at varying doses of rhesus KL treatment at $10 \mu\text{g kg}^{-1}$ averaged over the course of testing ($n = 46$ sessions from 9 monkeys; 6 female and 3 male), $20 \mu\text{g kg}^{-1}$ ($n = 31$ sessions from 7 monkeys; 5 female and 2 male) or $30 \mu\text{g kg}^{-1}$ ($n = 40$ sessions from 13 monkeys; 9 females and 4 males) compared to Veh + baseline ($n = 71$ sessions from 17 monkeys; 12 females and 5 males) $***P = 0.0006$ versus Veh (linear mixed-model ANOVA and Satterthwaite’s t -tests using sessions, two-tailed).

the transmembrane form) of the α -klotho protein. We tested a KL dose ($10 \mu\text{g kg}^{-1}$) previously shown to increase synaptic and cognitive functions in mice⁵. As expected, 4 h after peripheral administration in mice (Fig. 1a), rhesus KL enhanced long-term potentiation (LTP), a form of synaptic plasticity (Fig. 1b,c). In parallel to LTP, rhesus KL, 4 h after peripheral administration in mice, enhanced working memory in the small Y maze (Fig. 1d,e) without altering total movements (Extended Data Fig. 1). Collectively, these data show that the rhesus form of the KL protein was biologically active in the mouse brain, with a dose previously found to be effective using mouse KL⁵.

We next assessed serum KL levels in mice with KL-mediated cognitive enhancement. We measured serum KL levels 4 h after hormone administration because peripheral KL treatment enhances cognition by that time point (Fig. 1f). Mice were treated with either vehicle or mouse KL ($10 \mu\text{g kg}^{-1}$) and 4 h later their serum was collected and assayed for KL levels (Fig. 1f). Peripheral KL treatment with $10 \mu\text{g kg}^{-1}$ increased serum KL levels by approximately sixfold compared to vehicle-treated mice (Fig. 1g). As transgenic overexpression of KL also enhances cognition in mice^{3,4}, we measured serum KL in transgenic mice and found 3.5-fold increases compared to nontransgenic mice (Fig. 1g). Thus, a range of 3.5- to sixfold increase of serum KL was observed in KL-mediated cognitive enhancement of mice. Whether lower levels could be efficacious is unknown.

We aimed to achieve similar increases of serum KL in aging rhesus macaques to those observed in cognitively enhanced mice. As metabolism of KL could differ between the species, we peripherally administered a range of KL doses in rhesus macaques (0.4 – $30 \mu\text{g kg}^{-1}$ s.c.), collected their serum 4 h later and assayed KL levels. Baseline serum KL levels were similar between aged males and females. Compared to baseline levels of KL in aging rhesus macaques, treatment with $10 \mu\text{g kg}^{-1}$ was the lowest dose tested that significantly increased serum levels by fivefold, within the desired therapeutic range observed in mice. Of note, fivefold higher levels of serum KL are observed in human cord blood compared to adults³⁸ and decrease thereafter in aging^{1,2}.

To exceed our primary goal, we treated aged rhesus macaques (mean age ~ 21.78 years; Supplementary Table 1, putative human age equivalent of mean ~ 65 years) with a single administration of vehicle or $10 \mu\text{g kg}^{-1}$ (s.c.) of rhesus KL and tested their cognition. We chose this dose for primary analysis because it produced similar increases of KL that are (1) effective in cognitive enhancement of mice and (2) present at birth in humans³⁸.

Cognitive testing of aged rhesus macaques was performed using the spatial delayed response (SDR) task (Fig. 2a), assessing frontal-temporal circuits and regions of the brain, including the hippocampus and PFC. This task assesses working and spatial memory for both a normal memory load (NML; easier task) and high memory load (HML; harder task)³⁹ (Fig. 2b). SDR is an ideal task to test KL because aging disrupts the specific cognitive domains that it probes^{31,40}. In brief, monkeys were trained to achieve a stable baseline response for the NML task in remembering the spatial location of a food reward (Fig. 2a). All macaques were then treated with vehicle (s.c.) to habituate to effects of the procedure and stress of an injection on cognitive performance. Finally, monkeys were treated with either vehicle or rhesus KL (s.c.); 4 h later, monkeys underwent the HML task (with up to nine wells) followed by a series of NML tasks (up to seven wells) over 2 weeks (Fig. 2a), ending with another HML task.

In the primary analysis, KL ($10 \mu\text{g kg}^{-1}$, s.c.) enhanced cognition in aged rhesus macaques during both NML and HML testing. As expected, performance between baseline or vehicle treatment did not differ. KL ($10 \mu\text{g kg}^{-1}$, s.c.) increased HML performance by 4 h after treatment (Fig. 2c), within the same rapid time frame it increased cognition in mice (Fig. 1e). KL-mediated cognitive enhancement of HML, a harder memory task, persisted at 2 weeks (Fig. 2d). KL ($10 \mu\text{g kg}^{-1}$, s.c.) also enhanced the average NML performance (Fig. 2e), an effect that persisted across multiple tests during the first and second weeks

following treatment (Fig. 2f). KL-mediated enhancement was observed independent of sex.

In exploratory analysis of higher KL doses (20 and $30 \mu\text{g kg}^{-1}$, s.c.), significant cognitive improvement was not observed in either the HML (Fig. 2g) or the NML (Fig. 2h) tasks. It is interesting to note that in contrast to monkeys, mice continued to show cognitive enhancement with much higher KL doses⁵. This species difference may be related to increased structural and network complexity of the monkey compared to the mouse brain.

Collectively, our data show that KL ($10 \mu\text{g kg}^{-1}$) enhanced cognition in aging rhesus macaques, an effect that persisted for at least 2 weeks in both the NML and HML measures of memory. KL-mediated cognitive enhancement similarly persisted in mice for at least 2 weeks⁵, suggesting organizational, longer-lasting and beneficial effects on the synapse and brain. In both species, the cognitive effect outlasted the putative half-life of the hormone, 7 min¹⁵ in rodents and estimated at 29.5 h in aging rhesus macaques ($n = 8$ samples from two monkeys; Extended Data Fig. 2). KL induced a greater change in HML compared to NML, potentially because HML is a harder and more sensitive task with more dynamic range for improvement.

Higher doses of KL (20 and $30 \mu\text{g kg}^{-1}$) did not enhance cognition in monkeys. Of note, the higher doses tested did not impair cognition as the 2–5% changes were not significantly increased or decreased statistically; however, it remains to be determined whether doses even higher than those tested could impair cognition. Together, these data indicate that KL-mediated cognitive enhancement extends to NHPs in a complex genetic, anatomical and functional brain similar to humans. These data also suggest that lower, more ‘physiological’ levels of the hormone in the body may be required for a therapeutic window of cognitive enhancement in humans.

As KL has pleiotropic actions, including on insulin⁷ and FGF signaling⁸, Wnt⁹ and NMDAR functions^{3–5}, it is interesting to speculate that the specificity of its action at low doses represents a balanced, multimodal effect across signaling systems that inherently benefits biological substrates of cognition. Higher doses of KL, beyond what is experienced over the human lifespan, could differentially impact signaling systems to create imbalances that no longer enhance cognition. Whether even lower doses of KL than those tested could also enhance cognition remains to be determined. Further, because peripherally injected KL does not cross into the brain^{5,15}, peripheral messengers that transduce its signals into the brain should be identified.

Potential limitations of our study include that monkeys were tested on one cognitive task (SDR) and were not drug naive, though their cognitive testing was confirmed to have stably returned to baseline. We chose SDR because it is sensitive to aging and measures functions of the hippocampus and the PFC, a cognitive hub enhanced in individuals with a *KLOTHO* variant leading to higher systemic KL levels²⁵. SDR, which does not exhibit practice effects because each trial is unique (combined with a longitudinal experimental design), enabled testing of multiple time points after KL treatment using comparable testing procedures.

Because KL levels decrease in human aging^{1,2}, our data showing that a lower dose of KL (comparable to five times baseline levels and similar to levels observed at birth³⁸) can enhance cognition in aged NHPs suggest that peripheral treatment or replenishment with this endogenous hormone may prove therapeutic in aging humans.

Methods

Animals

All mice were on a congenic C57BL/6J background and kept on a 12-h light–dark cycle with ad libitum access to food and water. The ambient temperature was approximately 70°F and humidity was 42–43%. The standard housing group was five mice per cage. Behavioral tasks were carried out during the light cycle. All studies were approved by the Institutional Animal Care and Use Committee of the University of California, San Francisco, and conducted in compliance with

National Institutes of Health guidelines. Adult aged male and female rhesus macaque monkeys (*Macaca mulatta*) were on average (s.d.) 21.78 (3.80) years for monkeys ranging from 15–28 years; Supplementary Table 1). The putative human equivalent using a 1:3 conversion is 65.33 (11.39) years, ranging 45–84 years. Monkeys were maintained in accordance with the Yale University Institutional Animal Care and Use Committee and federal guidelines for the care and use of nonhuman primates. Monkeys were maintained in a 12-h light–dark cycle, fed standard monkey chow and fruit and were tested during the light cycle.

Drug treatment

Mouse KL and rhesus KL were diluted in PBS (pH 7.5) and injected s.c. at specified doses before behavior testing or sample collection for serum KL measurements. Recombinant proteins were used within 1 week of thawing from -80°C stock solutions and stored at 4°C . Proteins were coded to keep experimenters blind to the identity of treatment used in experiments for all mouse studies and for the majority of monkey studies performed.

Serum KL measurements

ELISAs were performed to measure KL from monkey serum samples, according to the manufacturer's directions as described³. Briefly, each monkey serum sample was diluted with ELISA buffer (1:2) and analyzed for KL by ELISA. One serum value, several s.d. above the cohort mean was excluded from analysis. For mouse serum, samples were assayed using immunoprecipitation-immunoblot for mouse KL by the O'Brien Kidney Research Core at UT Southwestern as described elsewhere⁴¹.

Electrophysiology

Mouse brain slices (300 μm) were obtained from coronal sections as described with some modifications^{3–5} from the hippocampal CA1 region following Schaffer collateral path stimulation. Briefly, mice were anesthetized, the brain was placed in ice-cold artificial cerebrospinal fluid, sliced on a vibratome (Leica VT1200) and slices were incubated (32°C for 30 min, then room temperature for 1 h before testing). Hippocampal slices were positioned on a Med64-Quad II multielectrode array (Alpha MED Scientific). Using planar electrodes (Quad II 2×8 Probe AL-MED-PG501A), the fEPSPs were produced and recorded. Using a theta-burst protocol, LTP was generated with a theta-burst protocol. Analysis and recordings were executed with Med64 Mobius Software (Alpha MED Scientific). After a stable induction of LTP, the final 10 min of a 60-min recording were averaged for each experimental group.

Small Y maze

Mice were tested in the small Y maze, also known as spontaneous alternation Y maze with spatial cues, as described^{3–5}. Briefly, a mouse was placed inside one of the three identical arms of the Y maze and allowed to explore the apparatus for 6 min. The recorded spontaneous alterations (Ethnavision XT v.10, Noldus) were scored manually and percent alternations were calculated. Two mouse cohorts were tested at the same time of day.

Spatial delayed response task

The SDR task with NML and HML was performed as described previously^{39,42}. Briefly, following training to stability (65–75% correct) on the NML task, monkeys were tested at approximately the same time of day for highly palatable food rewards. Stable performance was first achieved for each monkey by titrating task difficulty by increasing the number of spatial locations or lengthening the delays (a variable multiplier between one and ten applied to a set of baseline delays of 0, 1, 2, 3 and 4 s). Once stable, the number of wells and delay multiplier was kept fixed for that monkey for the duration of the testing for the current study. For testing, monkeys watched the spatially distanced wells while the investigator put a preferred treat in a single well. The wells were covered, an opaque screen between the monkey and wells

was lowered and after a predetermined delay, the screen was raised. The monkey was able to retrieve the treat if the choice of well was correct. Based on the number of wells and the time between cue and task the behavior is classified as either HML (6–9 wells; 0–15-s delay) or NML (4–7 wells; 0–32-s delay).

All animals had extensive training and testing on the task, typically over many years and participated in previous studies. During that time they exhibited stability in their working memory performance ($70 \pm 2.5\%$ s.e.m. correct) on multiple occasions, including immediately before commencing engagement in the current study. Animals performed 20 trials on any one test session, with generally one test session performed on any given day. A typical testing session lasted less than 10 min. In nearly all cases, animals were tested on a minimum of four SDR sessions between HML sessions to ensure stability or to detect any long-term changes in performance. A total of 13 animals were tested at the dose of $30 \mu\text{g kg}^{-1}$, 7 at $20 \mu\text{g kg}^{-1}$ and 9 at $10 \mu\text{g kg}^{-1}$ (two of them twice). One animal only received vehicle. Monkeys were used again to test other treatments such as vehicle or other KL doses only after cognitive testing was confirmed to be at the monkey's baseline. The history of testing for each monkey is provided in Supplementary Table 1.

Statistics and reproducibility

Statistical analyses were carried out with GraphPad Prism (v.7.0) for *t*-tests and analysis of variance (ANOVA). Two-tailed *t*-tests were used to determine differences between two means and two-way ANOVA was used to determine differences between multiple means. Post hoc corrections were performed for multiple comparisons as indicated. Linear mixed-model analysis for determining the effect of KL on task performance was performed with lme4 in R⁴³ with drug condition as a fixed effect and monkey as a random effect, accounting for repeated testing of some monkeys across test conditions. For analyses, baseline and vehicle HML sessions and post-baseline/vehicle NML test sessions were only used when monkeys were naive to KL treatment. Error bars represent \pm s.e.m. Null hypotheses were rejected at or below a *P* value of 0.05. For data exclusion, for mouse studies, exclusion criteria (greater than 2 s.d. above or below the mean) were defined a priori to ensure unbiased exclusion of outliers. In monkey studies, a monkey was excluded if it refused to perform the behavior task. No randomization method was used to allocate animals to experimental groups. Sample sizes were determined by assessing data reported in previous publications on KL in mice^{3,6} and in pharmacological studies of rhesus macaques⁴⁴. Data distribution was normal in studies of mouse synaptic plasticity and behaviors studies. For linear mixed-model analyses of monkey studies, residual plots were inspected for evidence of violation of assumptions; none was apparent. Blinding was used for mouse studies of behavior and synaptic plasticity and for the majority (>50%) of monkey behavior test sessions that included baseline, vehicle and varying KL doses (unblinded data did not differ appreciably from blinded data). Blinding was not used for ELISA studies.

Reporting summary

Further information on research design is available in the Nature Portfolio Reporting Summary linked to this article.

Data availability

All data supporting the findings of this study are available within the source data provided with this paper.

Code availability

There was no new code created for analysis of these data.

References

1. Semba, R. D. et al. Plasma klotho and mortality risk in older community-dwelling adults. *J. Gerontol. A Biol. Sci. Med. Sci.* **66**, 794–800 (2011).

2. Yamazaki, Y. et al. Establishment of sandwich ELISA for soluble α -klotho measurement: age-dependent change of soluble α -klotho levels in healthy subjects. *Biochem. Biophys. Res. Commun.* **398**, 513–518 (2010).
3. Dubal, D. B. et al. Life extension factor klotho enhances cognition. *Cell Rep.* **7**, 1065–1076 (2014).
4. Dubal, D. B. et al. Life extension factor klotho prevents mortality and enhances cognition in hAPP transgenic mice. *J. Neurosci.* **35**, 2358–2371 (2015).
5. Leon, J. et al. Peripheral elevation of a klotho fragment enhances brain function and resilience in young, aging, and α -synuclein transgenic mice. *Cell Rep.* **20**, 1360–1371 (2017).
6. Gupta, S. et al. KL1 domain of longevity factor klotho mimics the metabolome of cognitive stimulation and enhances cognition in young and aging mice. *J. Neurosci.* **42**, 4016–4025 (2022).
7. Wolf, I. et al. Klotho: a tumor suppressor and a modulator of the IGF-1 and FGF pathways in human breast cancer. *Oncogene* **27**, 7094–7105 (2008).
8. Urakawa, I. et al. Klotho converts canonical FGF receptor into a specific receptor for FGF23. *Nature* **444**, 770–774 (2006).
9. Liu, H. et al. Augmented Wnt signaling in a mammalian model of accelerated aging. *Science* **317**, 803–806 (2007).
10. Dubal, D. B. & Yokoyama, J. S. Longevity gene KLOTHO and Alzheimer disease: a better fate for individuals who carry APOE epsilon4. *JAMA Neurol.* **77**, 798–800 (2020).
11. Laszczyk, A. M. et al. Klotho regulates postnatal neurogenesis and protects against age-related spatial memory loss. *Neurobiol. Aging* **59**, 41–54 (2017).
12. Masso, A., Sanchez, A., Bosch, A., Gimenez-Llort, L. & Chillón, M. Secreted α -klotho isoform protects against age-dependent memory deficits. *Mol. Psychiatry* **23**, 1937–1947 (2018).
13. Zeng, C. Y. et al. Lentiviral vector-mediated overexpression of klotho in the brain improves Alzheimer's disease-like pathology and cognitive deficits in mice. *Neurobiol. Aging* **78**, 18–28 (2019).
14. Zhao, Y. et al. Klotho overexpression improves amyloid- β clearance and cognition in the APP/PS1 mouse model of Alzheimer's disease. *Aging Cell* **19**, e13239 (2020).
15. Hu, M. C. et al. Renal production, uptake, and handling of circulating α -klotho. *J. Am. Soc. Nephrol.* **27**, 79–90 (2016).
16. Driscoll, I. et al. Age-related tau burden and cognitive deficits are attenuated in KLOTHO KL-VS heterozygotes. *J. Alzheimers Dis.* **79**, 1297–1305 (2021).
17. Ali, M. et al. Leveraging large multi-center cohorts of Alzheimer disease endophenotypes to understand the role of klotho heterozygosity on disease risk. *PLoS ONE* **17**, e0267298 (2022).
18. Belloy, M. E. et al. KL*VS heterozygosity reduces brain amyloid in asymptomatic at-risk APOE*4 carriers. *Neurobiol. Aging* **101**, 123–129 (2021).
19. Belloy, M. E. et al. Association of klotho-VS heterozygosity with risk of Alzheimer disease in individuals who carry APOE4. *JAMA Neurol.* **77**, 849–862 (2020).
20. Driscoll, I. et al. AD-associated CSF biomolecular changes are attenuated in KL-VS heterozygotes. *Alzheimers Dement.* **14**, e12383 (2022).
21. Erickson, C. M. et al. KLOTHO heterozygosity attenuates APOE4-related amyloid burden in preclinical AD. *Neurology* **92**, e1878–e1889 (2019).
22. Grontvedt, G. R. et al. Association of klotho protein levels and KL-VS heterozygosity with Alzheimer disease and amyloid and tau burden. *JAMA Netw. Open* **5**, e2243232 (2022).
23. Kundu, P. et al. Serum levels of α -klotho are correlated with cerebrospinal fluid levels and predict measures of cognitive function. *J. Alzheimers Dis.* **86**, 1471–1481 (2022).
24. Neitzel, J. et al. KL-VS heterozygosity is associated with lower amyloid-dependent tau accumulation and memory impairment in Alzheimer's disease. *Nat. Commun.* **12**, 3825 (2021).
25. Yokoyama, J. S. et al. Variation in longevity gene KLOTHO is associated with greater cortical volumes. *Ann. Clin. Transl. Neurol.* **2**, 215–230 (2015).
26. Spector, J. M., Harrison, R. S. & Fishman, M. C. Fundamental science behind today's important medicines. *Sci. Transl. Med.* **10**, eaaq1787 (2018).
27. Yuede, C. M., Dong, H. & Csernansky, J. G. Anti-dementia drugs and hippocampal-dependent memory in rodents. *Behav. Pharmacol.* **18**, 347–363 (2007).
28. Rhesus Macaque Genome, S. et al. Evolutionary and biomedical insights from the rhesus macaque genome. *Science* **316**, 222–234 (2007).
29. Luebke, J. I. & Rosene, D. L. Aging alters dendritic morphology, input resistance, and inhibitory signaling in dentate granule cells of the rhesus monkey. *J. Comp. Neurol.* **460**, 573–584 (2003).
30. Morrison, J. H. & Baxter, M. G. The ageing cortical synapse: hallmarks and implications for cognitive decline. *Nat. Rev. Neurosci.* **13**, 240–250 (2012).
31. Moore, T. L., Killiany, R. J., Herndon, J. G., Rosene, D. L. & Moss, M. B. Executive system dysfunction occurs as early as middle-age in the rhesus monkey. *Neurobiol. Aging* **27**, 1484–1493 (2006).
32. Wang, M. et al. Neuronal basis of age-related working memory decline. *Nature* **476**, 210–213 (2011).
33. Birnbaum, S. G. et al. Protein kinase C overactivity impairs prefrontal cortical regulation of working memory. *Science* **306**, 882–884 (2004).
34. Brennan, A. R. et al. Protein kinase C activity is associated with prefrontal cortical decline in aging. *Neurobiol. Aging* **30**, 782–792 (2009).
35. Lacreuse, A. & Herndon, J. G. *Nonhuman Primate Models of Cognitive Aging* (Humana Press, 2009).
36. Luebke, J. I., Chang, Y. M., Moore, T. L. & Rosene, D. L. Normal aging results in decreased synaptic excitation and increased synaptic inhibition of layer 2/3 pyramidal cells in the monkey prefrontal cortex. *Neuroscience* **125**, 277–288 (2004).
37. Dumitriu, D. et al. Selective changes in thin spine density and morphology in monkey prefrontal cortex correlate with aging-related cognitive impairment. *J. Neurosci.* **30**, 7507–7515 (2010).
38. Ohata, Y. et al. Circulating levels of soluble α -klotho are markedly elevated in human umbilical cord blood. *J. Clin. Endocrinol. Metab.* **96**, E943–E947 (2011).
39. Castner, S. A. & Goldman-Rakic, P. S. Enhancement of working memory in aged monkeys by a sensitizing regimen of dopamine D1 receptor stimulation. *J. Neurosci.* **24**, 1446–1450 (2004).
40. Herndon, J. G., Moss, M. B., Rosene, D. L. & Killiany, R. J. Patterns of cognitive decline in aged rhesus monkeys. *Behav. Brain Res.* **87**, 25–34 (1997).
41. Barker, S. L. et al. The demonstration of α -klotho deficiency in human chronic kidney disease with a novel synthetic antibody. *Nephrol. Dial. Transplant.* **30**, 223–233 (2015).
42. Roberts, B. M. et al. Glycine transporter inhibition reverses ketamine-induced working memory deficits. *Neuroreport* **21**, 390–394 (2010).
43. Bates, D., Machler, M., Bolker, B. & Walker, S. Fitting Linear Mixed-Effects Models Using lme4. *J. Stat. Softw.* **67**, 1–48 (2015).
44. Kozak, R. et al. Reduction of brain kynurenic acid improves cognitive function. *J. Neurosci.* **34**, 10592–10602 (2014).

Acknowledgements

We thank M. Shanabrough for technical assistance with monkey behavioral studies, G. Davis for discussions and S. Lichtsteiner for assistance with experimental planning. This work was supported by

National Institutes of Health grants AG034531 and AG038325 (to D.B.D.), Coulter-Weeks (to D.B.D.), Bradley, Godsoe and Bakar Families (to D.B.D.) and Unity Biotechnology (to S.C., G.W. and D.B.D.). Unity Biotechnology had a role in the monkey study design, otherwise, funders had no role in study design, data collection, analysis, decision to publish or preparation of the manuscript. Mouse serum assays were performed by J. Pastor at the O'Brien Kidney Research Core at UT Southwestern (P30DK079328).

Author contributions

S.G., D.W., A.M., C.P., C.C., Y.P., A.G., K.G., N.D., T.B., M.G.B., G.V.W., S.A.C. and D.B.D. carried out experimental design and studies, analyzed data and/or contributed to the manuscript. All authors discussed the results and commented on the manuscript.

Competing interests

The Regents of the University of California holds an issued patent on 'Methods and compositions for improved cognition' involving KL (US10864256B2, inventor D.B.D.). The Regents of the University of California, Yale University and Unity Biotechnology have applied for a provisional patent application 'Methods for improving cognition' (inventors D.B.D., Y.P., K.G., N.D., S.C. and G.V.W.) involving KL. S.A.C., T.B., M.B., G.W. and D.B.D. consulted for Unity Biotechnology. D.B.D. consulted for SV Health Investors. K.G., Y.P., N.D. and D.B.D. hold stock in Unity Biotechnology. Y.P. and N.D. founded Jocasta Neuroscience to continue development of KL therapeutics. G.W. and S.C. founded SimCogNova. The other authors declare no competing interests.

Additional information

Extended data is available for this paper at <https://doi.org/10.1038/s43587-023-00441-x>.

Supplementary information The online version contains supplementary material available at <https://doi.org/10.1038/s43587-023-00441-x>.

Correspondence and requests for materials should be addressed to Dena B. Dubal.

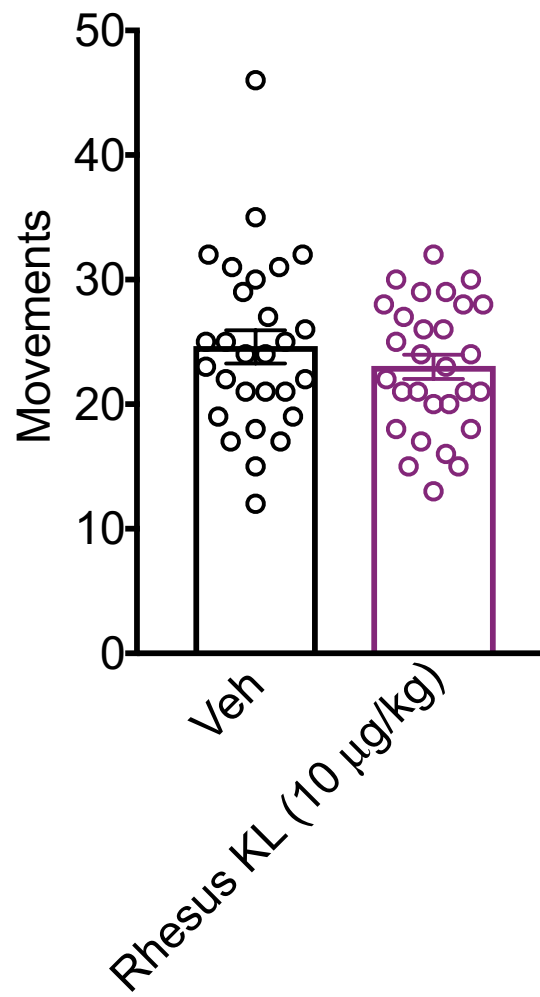
Peer review information *Nature Aging* thanks the anonymous reviewers for their contribution to the peer review of this work.

Reprints and permissions information is available at www.nature.com/reprints.

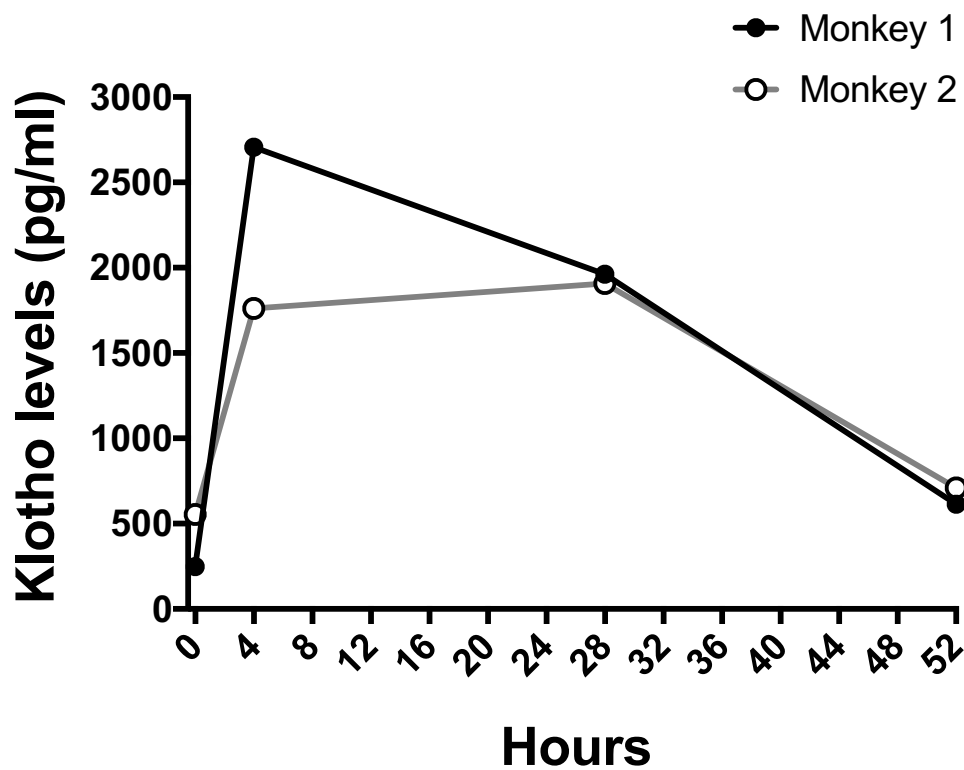
Publisher's note Springer Nature remains neutral with regard to jurisdictional claims in published maps and institutional affiliations.

Open Access This article is licensed under a Creative Commons Attribution 4.0 International License, which permits use, sharing, adaptation, distribution and reproduction in any medium or format, as long as you give appropriate credit to the original author(s) and the source, provide a link to the Creative Commons license, and indicate if changes were made. The images or other third party material in this article are included in the article's Creative Commons license, unless indicated otherwise in a credit line to the material. If material is not included in the article's Creative Commons license and your intended use is not permitted by statutory regulation or exceeds the permitted use, you will need to obtain permission directly from the copyright holder. To view a copy of this license, visit <http://creativecommons.org/licenses/by/4.0/>.

© The Author(s) 2023



Extended Data Fig. 1 | Rhesus klothe treatment of mice did not alter total arm entries in the Y maze, despite increasing % alternations. Mice (n = 28 mice, Veh; n = 29 mice, KL; age=4 months, male) treated with Veh or Rhesus KL (s.c., 10 µg/kg) did not differ in their number of entries despite klothe-mediated increased % alternations (Related to Fig. 1e). Data are mean ± SEM.



Extended Data Fig. 2 | Time course of serum klotho levels following treatment of two aged rhesus macaques. Following Rhesus KL injection (s.c., 30 $\mu\text{g}/\text{kg}$), blood was collected at 4 h, 28 h and 52hrs (n = 8 samples from 2 monkeys, female, ages 22 and 24 years). Assuming peak concentration at 4 h, putative klotho half-life was 29.5 h with predicted elimination in 6.15 days.

Reporting Summary

Nature Portfolio wishes to improve the reproducibility of the work that we publish. This form provides structure for consistency and transparency in reporting. For further information on Nature Portfolio policies, see our [Editorial Policies](#) and the [Editorial Policy Checklist](#).

Statistics

For all statistical analyses, confirm that the following items are present in the figure legend, table legend, main text, or Methods section.

n/a Confirmed

- The exact sample size (n) for each experimental group/condition, given as a discrete number and unit of measurement
- A statement on whether measurements were taken from distinct samples or whether the same sample was measured repeatedly
- The statistical test(s) used AND whether they are one- or two-sided
Only common tests should be described solely by name; describe more complex techniques in the Methods section.
- A description of all covariates tested
- A description of any assumptions or corrections, such as tests of normality and adjustment for multiple comparisons
- A full description of the statistical parameters including central tendency (e.g. means) or other basic estimates (e.g. regression coefficient) AND variation (e.g. standard deviation) or associated estimates of uncertainty (e.g. confidence intervals)
- For null hypothesis testing, the test statistic (e.g. F , t , r) with confidence intervals, effect sizes, degrees of freedom and P value noted
Give P values as exact values whenever suitable.
- For Bayesian analysis, information on the choice of priors and Markov chain Monte Carlo settings
- For hierarchical and complex designs, identification of the appropriate level for tests and full reporting of outcomes
- Estimates of effect sizes (e.g. Cohen's d , Pearson's r), indicating how they were calculated

Our web collection on [statistics for biologists](#) contains articles on many of the points above.

Software and code

Policy information about [availability of computer code](#)

Data collection

Data analysis

For manuscripts utilizing custom algorithms or software that are central to the research but not yet described in published literature, software must be made available to editors and reviewers. We strongly encourage code deposition in a community repository (e.g. GitHub). See the Nature Portfolio [guidelines for submitting code & software](#) for further information.

Data

Policy information about [availability of data](#)

All manuscripts must include a [data availability statement](#). This statement should provide the following information, where applicable:

- Accession codes, unique identifiers, or web links for publicly available datasets
- A description of any restrictions on data availability
- For clinical datasets or third party data, please ensure that the statement adheres to our [policy](#)

Field-specific reporting

Please select the one below that is the best fit for your research. If you are not sure, read the appropriate sections before making your selection.

Life sciences Behavioural & social sciences Ecological, evolutionary & environmental sciences

For a reference copy of the document with all sections, see [nature.com/documents/nr-reporting-summary-flat.pdf](https://www.nature.com/documents/nr-reporting-summary-flat.pdf)

Life sciences study design

All studies must disclose on these points even when the disclosure is negative.

Sample size	Typical sample sizes in our studies of synaptic plasticity and behavior with klotho are chosen based on previous experiments and studies (PMID: 35428698, 28793260). This includes: synaptic plasticity in mice (n=3-6 mice per group), behavior in mice (n=15-30 per group), and behavior in monkeys (n= 10-20 per group). For ELISA klotho level studies, sample sizes of n=3-7 were considered required to yield biologically relevant differences; this was considered sufficient since pilot studies showed several fold increases for klotho levels with transgenic overexpression or treatment in mice. For monkey ELISA klotho level studies, we were limited to monkeys that were available for injection and blood draw.
Data exclusions	In mouse studies, exclusion criteria (greater than 2 SDs above or below the mean) were defined a priori to ensure unbiased exclusion of outliers. In monkey studies, the monkey was excluded if it refused to perform the behavior task.
Replication	Significant results in the small Y maze of mice were tested again and successfully replicated using rhesus klotho. In other experiments, klotho-enhancing LTP results were replicated over five times using mouse and human forms of klotho (data not shown). All attempts at replication were successful. ELISA studies and monkey behavior studies were not replicated in independent cohorts.
Randomization	Allocation to groups was random.
Blinding	In mouse studies, experimenters were blinded to the treatment of all mice. In monkey studies, experimenters were blinded to treatment in the majority (>50%) of monkey behavior test sessions that included baseline, vehicle, and varying klotho doses . Blinded data did not appreciably differ from unblinded test behavior data. Monkey ELISA studies were not blinded since only klotho was injected for determining klotho level increase.

Reporting for specific materials, systems and methods

We require information from authors about some types of materials, experimental systems and methods used in many studies. Here, indicate whether each material, system or method listed is relevant to your study. If you are not sure if a list item applies to your research, read the appropriate section before selecting a response.

Materials & experimental systems

n/a	Involved in the study
<input checked="" type="checkbox"/>	<input type="checkbox"/> Antibodies
<input checked="" type="checkbox"/>	<input type="checkbox"/> Eukaryotic cell lines
<input checked="" type="checkbox"/>	<input type="checkbox"/> Palaeontology and archaeology
<input type="checkbox"/>	<input checked="" type="checkbox"/> Animals and other organisms
<input checked="" type="checkbox"/>	<input type="checkbox"/> Human research participants
<input checked="" type="checkbox"/>	<input type="checkbox"/> Clinical data
<input checked="" type="checkbox"/>	<input type="checkbox"/> Dual use research of concern

Methods

n/a	Involved in the study
<input checked="" type="checkbox"/>	<input type="checkbox"/> ChIP-seq
<input checked="" type="checkbox"/>	<input type="checkbox"/> Flow cytometry
<input checked="" type="checkbox"/>	<input type="checkbox"/> MRI-based neuroimaging

Animals and other organisms

Policy information about [studies involving animals](#); [ARRIVE guidelines](#) recommended for reporting animal research

Laboratory animals	All mice were on a congenic C57BL/6J background and were male (3-4 months old). Male and female monkeys were tested as described in the figure legends. Monkeys were rhesus macaques (<i>Macaca mullata</i>) (15-28 years old).
Wild animals	The study did not involve wild animals
Field-collected samples	The study did not involve samples collected from the field
Ethics oversight	All mouse studies were approved by the Institutional Animal Care and Use Committee of the University of California, San Francisco, and conducted in compliance with NIH guidelines. All monkey studies were approved by Yale University Institutional Animal Care and Use Committee

Note that full information on the approval of the study protocol must also be provided in the manuscript.