

Lawrence Berkeley National Laboratory

LBL Publications

Title

Seagrass genomes reveal ancient polyploidy and adaptations to the marine environment.

Permalink

<https://escholarship.org/uc/item/9c36v1w9>

Journal

Nature Plants, 10(2)

Authors

Ma, Xiao

Vanneste, Steffen

Chang, Jiyang

et al.

Publication Date

2024-02-01

DOI

10.1038/s41477-023-01608-5

Peer reviewed

Published in final edited form as:

Nat Plants. 2024 January 26; 10(2): 240–255. doi:10.1038/s41477-023-01608-5.

Seagrass genomes reveal ancient polyploidy and adaptations to the marine environment

Xiao Ma^{#1,2}, Steffen Vanneste^{#3}, Jiyang Chang^{#1,2}, Luca Ambrosino⁴, Kerrie Barry⁵, Till Bayer⁶, Alexander A. Bobrov⁷, LoriBeth Boston⁸, Justin E Campbell⁹, Hengchi Chen^{1,2}, Maria Luisa Chiusano^{4,10}, Emanuela Dattolo¹¹, Jane Grimwood⁸, Guifen He⁵, Jerry Jenkins⁸, Marina Khachatryan^{6,12}, Lázaro Marín-Guirao^{11,13}, Attila Mesterházy¹⁴, Danish-Daniel Muhd¹⁵, Jessica Pazzaglia^{11,16}, Chris Platt⁸, Shanmugam Rajasekar¹⁷, Stephane Rombauts^{1,2}, Miriam Ruocco^{11,18,19}, Alison Scott²⁰, Min Pau Tan¹⁵, Jozefien Van de Velde²⁰, Bartel Vanholme^{1,2}, Jenell Webber⁸, Li Lian Wong¹⁵, Mi Yan⁵, Yeong Yik Sung¹⁵, Polina Novikova²⁰, Jeremy Schmutz^{5,8}, Thorsten B.H. Reusch²¹, Gabriele Procaccini^{11,16}, Jeanine L. Olsen²², Yves Van de Peer^{1,2,23,24}

¹Department of Plant Biotechnology and Bioinformatics, Ghent University, 9052 Ghent, Belgium

²VIB Center for Plant Systems Biology, VIB, 9052 Ghent, Belgium

³Department Plants and Crops, Faculty of Bioscience Engineering, Ghent University, Coupure Links 653, 9000 Ghent, Belgium

⁴Department of Research Infrastructure for Marine Biological Resources, Stazione Zoologica Anton Dohrn, Villa Comunale, 80121, Naples, Italy

For the purpose of Open Access, the author has applied a [CC BY](#) public copyright licence to any Author Accepted Manuscript version arising from this submission.

Author contributions table

X.M., V.S. and J.Ch. contributed equally to the work and are joint first authors. Y.VdP., J.L.O., T.B.H.R. and G.P. conceived the project, provided the overall evolutionary context, and wrote the proposal. Y.VdP., J.L.O., T.B.H.R. and G.P. wrote and edited the main manuscript, and organized and further edited the individual contributions for the Supplementary Notes (as listed for the Supplementary Information below). All co-authors then provided specific feedback in forming the final version.

J.L.O., J.Ca., G.P., L.M.G., T.B.H.R., A.B., A.M., and P.N. contributed to sample tissue collection, preparation, and shipping for DNA extraction. S.Raj., L.B., G.H., J.W., M.Y. performed the HMW DNA extractions and QC, as well as RNA extractions and QC for annotation assistance. J.S. and J.G. coordinated genome sequencing management steps for the seagrasses. A.M. and P.N. coordinated genome sequencing management steps for *Potamogeton*. K.B. was responsible for overall JGI technical coordination, liaison with principal investigators and project manager.

J.J., C.P., J.S., Y.VdP., S.R., A.S., J.vV. and T.B. performed analysis activities surrounding genome assembly (PacBio, HiC), supporting transcriptomics for annotation. J.J., Y.VdP., S.R., X.M. were responsible for deposition and maintenance of the species on the ORCAE site, and deposition of the new genomes to NCBI and Phytozome. J.Ch., X.M., S.M., J.Ch. were responsible for manuscript graphics.

Analysis of architectural features of genome evolution and annotation of specific gene families, including the written contributions to the main paper and Supplementary Information sections as follows: M.L.C., L.A. for the Orthogroups Master Extended Data; M.L.C., A.S., X.M., J.Ch. for overview of gene families; H.C., X.M., J.Ch., Y.VdP. for Whole Genome Duplications/Triplications and dating; M.L.C., X.M. for Transposable Elements and repeat elements; M.K., T.B.H.R. for Organellar genomes; M.L.C., L.A. for Non-protein coding RNA families; S.V., X.M. for Stomata; S.V., X.M. for Volatile metabolites and signaling, ethylene; X.M., S.V. for Plant body development, lignification, vascular tissue; T.B. for Plant defense, R-genes; L.M.G. for Heat shock factors; S.V., X.M. for Flavenoids and phenolics; S.V. for Cellular salt tolerance; S.V., B.V. for Cell wall plasticity; S.V., X.M. for Hypoxia; G.P. for Light perception, photosynthesis, light harvesting, transcription factors; G.P., M.R. Carbon acquisition, CCMs; G.P. for UVB tolerance; G.P., E.D. for Clock genes; J.P. for NAC genes; D.M., L.W., M.P.T., Y.Y.S. for Nitrogen metabolism.

X.M., J.Ch., S.R. were responsible for data deposit on ORCAE platform. K.B., J.G. were in charge of data deposit on NCBI.

Competing Interests

The authors declare no competing interests

⁵DOE Joint Genome Institute, Lawrence Berkeley National Laboratory, Mail Stop: 91R183, 1 Cyclotron Road, Berkeley, CA 94720, USA

⁶GEOMAR Helmholtz-Zentrum für Ozeanforschung Kiel, Marine Evolutionary Ecology, Wischhofstr. 1-3, 24148 Kiel, Germany

⁷Papanin Institute for Biology of Inland Waters RAS, Borok, Nekouz Distr., Yaroslavl Reg., 152742, Russia

⁸Genome Sequencing Center, Hudson Alpha Institute for Biotechnology, 601 Genome Way, Huntsville, AL 35806, USA

⁹Coastlines and Oceans Division, Institute of Environment, Florida International University-Biscayne Bay Campus, 3000 NE 151st St., Miami, Florida 33181, USA

¹⁰Department of Agricultural Sciences, University Federico II of Naples, Naples, Italy

¹¹Department of Integrative Marine Ecology, Stazione Zoologica Anton Dohrn, Villa Comunale, 80121 Naples, Italy

¹²Institute of General Microbiology, University of Kiel, Kiel, Germany

¹³Seagrass Ecology Group, Oceanographic Center of Murcia, Spanish Institute of Oceanography (IEO-CSIC), Murcia, Spain

¹⁴Centre for Ecological Research, Wetland Ecology Research Group, Bem tér 18/C, Debrecen, H-4026, Hungary

¹⁵Institute of Marine Biotechnology, Universiti Malaysia Terengganu, Terengganu, Malaysia

¹⁶National Biodiversity Future Centre (NBFC), Palermo, Italy

¹⁷Arizona Genomics Institute, University of Arizona, 1657 E. Helen St, Tucson, AZ 85721, USA

¹⁸University of Bologna, Department of Biological, Geological and Environmental Sciences, Bologna, Italy

¹⁹Fano Marine Center, Fano, Italy

²⁰Max Planck Institute for Plant Breeding Research (MPIPZ), Department of Chromosome Biology, Carl-von-Linne-Weg 10, 50829 Köln, Germany

²¹Marine Evolutionary Ecology, GEOMAR Helmholtz Centre for Ocean Research Kiel, Düsternbrooker Weg 20, D-24105 Kiel, Germany

²²Groningen Institute for Evolutionary Life Sciences (GELIFES), University of Groningen, Nijenborgh 7, 9747AG, Groningen, Netherlands

²³Centre for Microbial Ecology and Genomics, Department of Biochemistry, Genetics and Microbiology, University of Pretoria, Pretoria 0028, South Africa

²⁴College of Horticulture, Academy for Advanced Interdisciplinary Studies, Nanjing Agricultural University, Nanjing, China

Thorsten B.H. Reusch: treusch@geomar.de; Gabriele Procaccini: gpro@szn.it; Jeanine L. Olsen: j.l.olsen@rug.nl; Yves Van de Peer: yves.vandepeer@psb.ugent.be

These authors contributed equally to this work.

Abstract

We present chromosome-level genome assemblies from representative species of each of three independently evolved seagrass lineages, namely *Posidonia oceanica*, *Cymodocea nodosa*, *Thalassia testudinum*, and *Zostera marina*. We also include a draft genome of *Potamogeton acutifolius*, belonging to a freshwater sister lineage to Zosteraceae. All seagrass species share an ancient whole genome triplication, while additional whole genome duplications were uncovered for *C. nodosa*, *Z. marina* and *P. acutifolius*. Comparative analysis of selected gene families suggests that the transition from submerged-freshwater to submerged-marine environments mainly involved fine-tuning of multiple processes, e.g., osmoregulation, salinity, light capture, carbon acquisition and temperature, that all had to happen in parallel, likely explaining why adaptation to a marine lifestyle has been exceedingly rare. Major gene losses related to stomata, volatiles, defense, and lignification, are likely a consequence of the return to the sea rather than the cause of it. These new genomes will accelerate functional studies and solutions — as continuing losses of the ‘savannas of the sea’ are of major concern in times of climate change and loss of biodiversity.

Keywords

Alismatales; convergent evolution; *Cymodocea nodosa*; hexaploidy; *Posidonia oceanica*; *Potamogeton acutifolium*; seagrasses; *Thalassia testudinum*; whole genome duplication (WGD); whole genome triplication (WGT); *Zostera marina*

Introduction

Seagrasses are unique flowering plants, adapted to a fully submerged existence in the highly saline environment of the ocean, where they must root in reducing sediments, endure chronic light limitation, and withstand considerable hydrodynamic forces. In spite of these obstacles, the 80 or so species are among the most widely distributed flowering plants^{1–3} with recently measured estimates of coverage ranging from 600,000 km²⁴ to a modeled value of 1,6 million km²^{5,6}. Seagrasses fulfill many critical ecosystem functions and services including carbon sequestration, nutrient cycling, bacterial suppression, and coastal erosion protection^{7–11}. Along with mangroves, saltmarshes, and coral reefs, seagrass meadows are among the most biologically productive ecosystems on Earth. They act as breeding and nursery grounds for a huge variety of organisms including juvenile and adult fish, epiphytic and free-living algae, mollusks, bristle worms, nematodes, and other invertebrates such as scallops, crabs, and shrimp. Their importance for marine megafauna such as sea turtles, dugongs and manatees is unrivalled and their disappearance an important driver of the decline of these marine animals¹². Seagrasses also rank amongst the most efficient natural carbon sinks on Earth, sequestering CO₂ through photosynthesis and storing organic carbon in sediments for millennia¹³. While occupying only 0.1% of the ocean surface, seagrasses have been estimated to bury 27–44 Tg C_{org} per year globally, accounting for 10–18% of the total C burial in the oceans and being up to 40 times more efficient at capturing organic carbon than land-forests soils¹⁴.

Previous work on *Zostera marina*^{15,16} uncovered several unique gene family losses, as well as metabolic pathway losses and gains, that collectively underly novel structural and

physiological traits, along with evidence for ancient polyploidy. Here, we expand on this work and present new chromosome-scale, high-quality reference genomes to understand the specific morphological and physiological adaptations that have enabled their worldwide distribution, except for Antarctica¹. These included *Posidonia oceanica* (L.) Delile (Posidoniaceae), *Cymodocea nodosa* (Ucria) Ascherson (Cymodoceaceae), and *Thalassia testudinum* K. D. Koenig (Hydrocharitaceae) to chromosome level assemblies, and a closely related freshwater-submerged alismatid, *Potamogeton acutifolius* Link (Potamogetonaceae), to draft level. Representative seagrass species within each family (Supplementary Figure 1.1) were chosen based on ecological importance, susceptibility to anthropogenic pressure, and availability of an extensive ecological literature. Briefly, *Posidonia oceanica* is the iconic Mediterranean seagrass and the largest in terms of plant size and physical biomass. It is a climax species characterized by extreme longevity and carbon storage capacity. *Thalassia testudinum* (turtle grass) is a climax tropical species unique to the greater Caribbean region, with a single sister species endemic to the Indo-Pacific. *Cymodocea nodosa* is restricted mainly to the Mediterranean, Black and Caspian Seas, with an Atlantic extension along the Canary Island archipelago and along the subtropical Atlantic coast of Africa. It is the only temperate species of an otherwise disjunct tropical genus from the Indo-Pacific. The curly pondweed *Potamogeton acutifolius* belongs to the sister family of Zosteraceae and was chosen as its closest submerged freshwater sister taxon. We also included the recently upgraded genome of *Zostera marina* L.¹⁷, which is found throughout the northern hemisphere and is arguably the most widespread species on the planet¹⁸. To distinguish between adaptations to an aquatic lifestyle, and those unique to the ocean environment, our comparative analysis also included genomes of two recently sequenced emergent freshwater alismatids (which are rooted in underwater substrate, but have leaves and stems extending out of the water), along with the genomes of two distantly related salt-water tolerant mangrove species. In addition, representative transcriptomic data¹⁶ of 89 Alismatales species was utilized to gain a more comprehensive view of shared and unique seagrass and freshwater adaptations within the order Alismatales (Supplementary Figure 1.1).

To better understand the extremely rare transition from a freshwater environment to a submerged saline environment, we compared gene family and pathway evolution across species, considering gene loss, as well as gene birth through small and large-scale gene duplication events, and investigated their effect on plant body structure (cell walls, stomata, hypolignification) and also investigated their relationship to physiological adaptations (hypoxia, plant defense, secondary metabolites, light perception, carbon acquisition, heat shock factors and especially salt tolerance mechanisms).

Results and Discussion

Genome assemblies and gene annotations

We assembled the genomes of *T. testudinum*, *P. oceanica*, and *C. nodosa* to chromosomal level using a combination of short sequence reads, PacBio HiFi, PacBio long reads, and Hi-C chromosome mapping. The novel seagrass genomes varied in haploid chromosome number from 6 to 18 and were very different in size, while containing approximately the same number of gene models (Supplementary Table 2.1.4). Further details of

genome assembly and annotation, based on a combination of *ab initio* prediction, homology searches, RNA-aided evidence, and manual curation can be found in Methods, Supplementary Table 2.1.4., Supplementary Note 2.1, and Supplementary Table 2.1.3. BUSCO scores of >95% demonstrate the high level of completeness in the genomes. The prediction of non-protein coding RNA families (i.e., rRNAs, tRNAs, snoRNAs) for *Z. marina*, *C. nodosa*, *P. oceanica*, *T. testudinum*, and *P. acutifolius* can be found in Supplementary Note 3.1 and Supplementary Table 3.1.). Figure 1 shows the distribution of different genomic features along the reconstructed pseudochromosomes for the different seagrass species. Information on plastid and mitochondrial genomes can be found respectively in Supplementary Note 2.2 and Supplementary Note 2.3.

Information on Nuclear-mitochondria (NUMTs) and nuclear-chloroplast (NUPTs) integrants can be found in Supplementary Note 2.4 and Supplementary Table 2.4.

Genome Evolution

Transposable elements—Transposable elements (TE) comprise more than 85% of the genomes of *T. testudinum* and *P. oceanica*, as compared to only 65% for *C. nodosa* and *Z. marina*, and 40% for *P. acutifolius* (Supplementary Table 4.1). Long terminal-repeat retrotransposons (LTR-REs) are the major class of TEs and account for 72%, 66%, 46% and 42% in *T. testudinum*, *P. oceanica*, *C. nodosa* and *Z. marina*, respectively. LTR/Gypsy elements account for 63.18% in *T. testudinum*, 57.8% in *P. oceanica* and 32.11% in *Z. marina*, whereas the proportion of LTR/Copia elements was higher than that of LTR/Gypsy in *C. nodosa* and *P. acutifolius*. Bursts of TEs (especially LTRs) create new genetic variation that may be adaptive under conditions of stress. Over evolutionary time, different TE loads and distributions among species provide clues related to habitat differences and stress resistance^{19,20}. The insertion times of LTRs in the seagrass genomes (Methods) indicates a massive LTR/Gypsy burst around 200 thousand years ago (Kya) in *T. testudinum* (see y-axis), a moderate burst around 400 Kya in *P. oceanica* and *Z. marina*, but not in *C. nodosa*. By contrast, an expansion in Copia-elements happened around 2 Mya in *C. nodosa* but was weaker in *P. oceanica*, and nearly absent in *T. testudinum* and *Z. marina*. The recent TE gypsy burst (200 Kya) and older Copia burst (2 Mya median) coincide with drastic environmental fluctuations during Pleistocene ice ages (Supplementary Figure 4.1) and the timing of the trans-Arctic dispersal of *Z. marina* to the Atlantic from the Pacific¹⁸. The Gypsy bursts at 400 and 200 Kya correspond to Marine Isotope Stage MIS12 and MIS6, two heavy glaciations that were followed by rapid warming²¹.

Whole genome duplication, ancient (hexa)polyploidy and dating—Next, we revisited the established whole genome duplication (WGD) in *Z. marina*¹⁵ and investigated whether evidence for ancient polyploidy could be found in the other seagrasses, which are all behaving as functional diploids²². To this end, we used inferred age distributions of synonymous substitution rate (K_S) for paralogs retained in collinear regions (anchor pairs), along with gene-tree/species-tree reconciliation methods (see Methods, Supplementary Note 4.2.1 and Supplementary Note 4.2.2). First, K_S distributions of all seagrass species showed peaks indicative of ancient WGDs (Supplementary Figure 4.2.1)¹⁶. This was supported by intra- and intergenomic collinearity analysis (see Supplementary Note 4.2.1). Comparison

of *P. oceanica* and *T. testudinum* with a reconstructed ancestral monocot karyotype (AMK²³) shows a clear 3:1 synteny relationship, while a comparison of *Z. marina* with the AMK exhibits a 1:6 synteny relationship (Supplementary Figure 4.2.2). *Cymodocea nodosa* was also found to show a 6:1 relationship compared to the AMK, while showing a 2:1 relationship with its sister species *P. oceanica* (Supplementary Figure 4.2.3), providing strong support for an additional WGD in *C. nodosa* after diverging from the *P. oceanica* lineage. Likewise, the freshwater species *P. acutifolius* was found to show a collinear relationship of 6:1 with the AMK and a 2:1 relationship with *P. oceanica*, and a 2:2 relationship with *C. nodosa*, while the colinearity relationship with its sister species *Z. marina* was more obscure (Supplementary Figure 4.2.4). However, these findings provide evidence that also *P. acutifolius* experienced an additional WGD event after its divergence with *P. oceanica* and *C. nodosa*. Of note, the overall 1:3 or 1:6 synteny relationships with the AMK suggested a hexaploid rather than a tetraploid ancestry for seagrasses and relatives.

Second, based on a K_S analysis using ksrates²⁴, we were able to confirm that this paleohexploidy is shared by *P. oceanica*, *C. nodosa*, *Z. marina*, and *P. acutifolius*, while the analysis was inconclusive for *T. testudinum* (Supplementary Figure 4.2.5). To resolve this issue, we applied a gene-tree/species-tree reconciliation approach using WHALE²⁵, which confirmed that the ancient whole genome triplication (WGT) event is shared by all seagrasses, and *P. acutifolius*. WHALE also supported the younger WGD in *Z. marina* is shared with *P. acutifolius* (Supplementary Note 4.2.2 and Supplementary Figure 4.2.6). Phylogenomic dating of the WGT (see Methods and Supplementary Note 4.2.3) further shows that most gene duplicates are reconciled on the branch leading to the most recent common ancestor (MRCA) of Potamogetonaceae, Zosteraceae, Posidoniaceae, Cymodoceaceae and Hydrocharitaceae, at approximately 86.96 (89.89 - 79.81) Mya (Figure 2 and Supplementary Figure 4.2.7a). Recently, Chen et al.¹⁶ also reported a WGD shared by all core Alismatales (Supplementary Figure 1.1). However, these authors suggested a WGD rather than a WGT, which can be attributed to the lack of structural data, since their study was based solely on transcriptome data. Independent absolute dating of the shared WGD for *P. acutifolius* and *Z. marina* confirmed an earlier obtained date for the *Zostera* WGD of approximately 65 Mya (Supplementary Figure 4.2.7c-f), coinciding with the K/Pg boundary¹⁵, which was also used to date a recent within-species phylogeographic study for *Z. marina*¹⁸.

Adaptation to the Marine Environment

All three seagrass lineages characterized in this study share many specific morphological and physiological adaptations to their specific environment. Historically, a number of features were proposed as prerequisites for marine angiosperm life, such as tolerance to submergence, tolerance to salinity, hydrophilous pollination, and a capacity for vegetative anchorage^{26,27}. Previous studies have already reported genes potentially linked to the adaptation to the marine environment¹⁵, while a recent study that conducted a broad transcriptome-based sampling of Alismatales uncovered some patterns of gene loss and gain also likely associated with aquatic and/or marine adaptation¹⁶. Discrimination between aquatic (i.e., freshwater) and marine adaptations is not necessarily easy. To achieve greater insights into both adaptations, we used a common set of species for which full

genome information is available (four seagrasses, three freshwater alismatids, and 16 other angiosperms, Figure 2 and Supplementary Note 4.3). We also utilized the extensive transcriptome dataset of Chen et al. (16) and broadly assessed commonalities and differences in gains and losses across gene families (further referred to as orthogroups, see Methods and Extended Data Table 1-10). The most important findings on adaptation to both aquatic-submerged, and marine conditions are summarized in Figure 3 (and Supplementary Figure 5.1).

Use it or lose it - convergence and specificity of gene losses—Under water, stomata are not required and may even be harmful for a submerged lifestyle because of the intrusion of water. Hence, seagrasses, and to a limited extent also freshwater alismatids, e.g., *P. acutifolius*, have reduced the number of genes involved in their development. Specifically, out of 30 orthogroups containing guard cell toolkit genes²⁸, eleven have been convergently and completely lost in seagrasses, while six others were significantly contracted compared to non-seagrass genomes (Figure 3a and Extended Data Table 1). Lost gene families include positive (SMF transcription factors), negative (EPIDERMAL PATTERNING FACTOR1 AND 2 (encoded by *EPF1*, *EPF2*), and TOO MANY MOUTHS (encoded by *TMM*)) regulators of stomatal development, as well as stomatal function (encoded by *BLUS1*, *KAT1/2* and *CHX20*) (Figures 3a and 3c). Gene losses and contractions in the guard cell toolkit are also seen in the submerged freshwater alismatid *P. acutifolius* studied here, and to a less extreme degree in the floating alismatid *S. polyrhiza* (Figure 3a and Extended Data Table 1).

The aqueous habitat of seagrasses is also not conducive to emitting volatile substances as signals. Accordingly, we observed a convergent loss of orthogroups associated with volatile metabolites and signals. This includes the biosynthesis of triterpenes, and the volatile systemic acquired resistance signal, methyl salicylate²⁹ (Extended Data Table 2). Probably a more dramatic gene loss relates to ethylene biosynthesis and signaling (Extended Data Table 2). Two species, *C. nodosa* and *Z. marina*, do not contain *ACS* or *ACO* genes and hence, are not expected to produce ethylene or its precursor 1-aminocyclopropane 1-carboxylic acid (ACC). Moreover, they seem to have lost the ability to respond to ethylene, as indicated by a severe contraction of the early ethylene signal transduction components (Figure 3a and 3d)^{15,16,30}. In contrast, the downstream ethylene transcription factors (encoded by *EIN3/EIL1/2*) have been retained in all seagrasses, suggesting they can still exert ethyleneindependent functions. Remarkably, and unlike *C. nodosa* and *Z. marina*, *T. testudinum* and *P. oceanica*, as well as freshwater submerged species, retained some components for functional ethylene biosynthesis and signaling, as was also reported by Chen et al.¹⁶. As diffusion of ethylene into water is extremely slow compared to diffusion in the air, ethylene rapidly accumulates in submerged organs. Such accumulation typically serves as a signal for submergence, and activating adaptive responses, such as formation of aerenchyma, adventitious rooting, shoot elongation, quiescence and priming the metabolism for efficient low-oxygen responses^{31,32}. However, while the accumulation of ethylene can be considered beneficial for the flooding tolerance of land plants, high levels and prolonged exposure to ethylene can have detrimental effects, such as stunted growth, senescence and abscission of leaves and flowers, root growth inhibition, and increased stress sensitivity

³³. One possible mechanism that may prevent the accumulation of deleterious levels of ethylene, and thus explain its retention in *T. testudinum* and *P. oceanica*, is via epiphytic and endophytic bacteria that express ACC deaminases. This hypothesis is supported by the presence of multiple ACC deaminases in the metagenome of *P. oceanica* sediments ³⁴, but needs further study.

Seagrasses increase their morphological flexibility to withstand hydrodynamic wave and current forces by a reduction in vascular tissues, the main site of lignification ³⁵, consistent with the absence of vascular proliferation factor encoded by *WOX4*, and a contraction of the number of pericycle cell identity transcription factors (Figure 3a and Extended Data Table 3). This finding seems a more general adaptation to aquatic lifestyles, as also suggested by analysis of the transcriptomes of different Alismatales (Supplementary Figure 5.1, this study, and ref ⁽¹⁶⁾). The most severe reduction of the vascular bundle is seen in *Z. marina* which even lacks a pericycle³⁶, a finding that correlates with the loss and divergence of the vascular proliferation regulators encoded by *PXY* and *MONOPTEROS/ARF5* (Figure 3a and Extended Data Table 3). Notably, the lack of *MONOPTEROS/ARF5* in *Z. marina* is further reflected in its inability to form an embryonic primary root ³⁷. The general cellular hypolignification in seagrasses is reflected in the reduction in the number of *LACCASEs* encoding the final enzymes in the lignin pathway, which oxidize monolignols to facilitate their polymerization into lignin ^{38,39} (Figures 3a, 3e and Extended Data Table 4). The reduced need for the monolignol production is matched by a reduction of respectively PHENYLALANINE AMMONIA LYASE (encoded by *PAL*), and HYDROXYCINNAMOYL-COA SHIKIMATE/QUINATE HYDROXYCINNAMOYL TRANSFERASE (encoded by *HCT*) genes, which constitute entrance points into phenylpropanoid biosynthesis ⁴⁰ (Figures 3a, 3f and Extended Data Table 4). Gene family contractions in lignin biosynthesis are also observed for the submerged freshwater species *P. acutifolius* and the freshwater floating species *S. polyrhiza* (Figure 3a).

Arbuscular mycorrhizal symbiosis (AMS) were and are critical for plant terrestrialization ^{41,42} and are found in salt marsh plants, mangrove forests, and freshwater ecosystems ^{43–45}. There is currently no evidence for any seagrass species to form mycorrhizal associations ⁴⁶, which is reflected in the absence (secondary loss) of AMS-specific genes, with the sole exception of *DMI3* in *P. oceanica* (Figure 3a). Gene loss of AMS-specific genes is also seen in freshwater submerged and floating species (Figure 3a). We also investigated so-called AMS-conserved genes, which have non-symbiotic roles ⁴⁷ and discovered that seagrasses and *P. acutifolius* consistently retained a specific set of these conserved genes (*DMI1*, *NUP85*, *NUP133*, *NENA*, *CCD7*, *CCD8* and *MAX2*) (Figure 3a). The absence of *NSP1* and *NSP2* is not unique to seagrasses but seems to be rather a common adaptation observed in aquatic environments (Supplementary Figure 5.1) and Proteales species ⁴⁸.

The pathogen landscape of the marine environment is associated with a different composition of plant resistance (R-genes) genes. In the seagrasses, there are fewer genes containing nucleotide-binding leucine-rich repeat receptors (NLRs) as compared to most other plants (Extended Data Table 5, Supplementary Note 5.2, Supplementary Table 5.2 and Supplementary Figure 5.2.1). As in many monocots, NLRs with a Toll/interleukin-1

receptor/resistance protein (TIR) domain are also completely absent in all seagrass lineages, as well as a few other NLR genes from the leucine rich repeat (LRR) domain. It is currently unclear what selective pressure was responsible for the unique R-gene composition of the seagrasses. Lower counts of disease resistance genes have also been observed for other aquatic plants⁴⁹.

Temperature fluctuations are much slower and show a lower amplitude in the marine compared to terrestrial environment⁵⁰. Accordingly, we observed a reduction in the number of plant heat shock transcription factors (*HSFs*) that are involved in the rapid activation of stress-responsive genes upon temperature changes, and which have been linked to the evolutionary adaptation of plants to the terrestrial environment⁵⁰. Seagrasses contain only about half the number of *HSFs* as compared with terrestrial plants (Extended Data Table 5, Supplementary Note 5.3 and Supplementary Table 5.3). Notably, only seagrasses belonging to the tropical genera retained some of the key heat stress-related *HSFs* from WGD and WGT events (Extended Data Table 5), which is consistent with their warmer native environment and higher heat stress tolerance compared to temperate seagrasses (*P. oceanica* and *Z. marina*).

Multi-level “tweaking” to adapt to the marine environment

Protective flavonoids and phenolics—Most seagrasses, except *C. nodosa*, seem to have greatly expanded the number of CHALCONE SYNTHASEs, which channel *p*-coumaroyl-CoA into flavonoid biosynthesis at the expense of monolignol biosynthesis (Figure 3a, 3f, and Extended Data Table 6). Flavonoids provide protection against UV and fungi, while enhancing recruitment of N-fixing bacteria^{34,51,52}. Flavonoids and other phenolics in seagrasses can be sulphated by the activity of cytosolic sulphotransferases to increase their water solubility and bioactivity in the marine environment^{53,54}. For example, the sulphated monolignol, zosteric acid (*O*-sulfonated *p*-coumaric acid) is an antifouling agent that prevents biofilm formation at the leaf surface⁵⁵. Cytosolic sulphotransferases are expanded in seagrasses, but significantly contracted in *Potamogeton*. However, flavonoid glycosyltransferases and flavonoid beta-glucosidases are contracted in both (Figure 3a, 3f, and Extended Data Table 6). Jointly, these data illustrate how rerouting precursors of the lignin biosynthesis pathway likely facilitated two traits, i.e., reduced rigidity, which appears to be a general aquatic adaptation, and sulphated protection, which contributes to the evolution of the marine lifestyle of seagrasses^{34,54}. In the case of *P. oceanica*, secreted phenolic compounds, together with anoxia, both inhibit microbial consumption of sucrose from root exudates³⁴.

Diverse mechanisms of cellular salt tolerance

Salt tolerance in flowering plants is a complex trait that involves multiple cellular processes⁵⁶. In the extreme case of invasion of highly-saline, marine environments, one might assume wholesale changes in salt tolerance mechanisms and/or the evolution of specialized features, such as salt glands in mangrove species. To date, no obvious specialized structures involved in salt tolerance have been identified in seagrasses. Instead, it seems that canonical salt tolerance mechanisms have been fine-tuned or “tweaked” towards higher efficiency on multiple levels. A major challenge associated with the marine environment is to prevent

the accumulation of noxious levels of Na^+ and Cl^- , while allowing the efficient uptake of the essential ion K^+ . Angiosperms employ secondary Na^+ transport mechanisms based on Na^+/H^+ antiporters fueled by a strong electrochemical H^+ gradient. Surprisingly, no notable gene gains or losses were observed among the putative sodium transporting NHXs (*NHX1* and *SOS1/NHX7*), except for *C. nodosa*, which contains a few extra copies of *NHX1* and *SOS1* orthologs (Extended Data Table 7). Instead of an increased number of genes, we observed similar amino-acid substitutions in regulatory domains of *SOS1* orthologs in all four species (Supplementary Figure 5.4.1), indicating the possibility of altered regulation of *SOS1/NHX7* in these species, a notion that is also supported by the loss of *SOS3*, a key regulator of *SOS1* activity in *C. nodosa* (Extended Data Table 7). The electrochemical H^+ gradients that fuel Na^+ transport is established via H^+ ATPases (encoded by *AHA*), V-ATPases and vacuolar H^+ -PPases (encoded by *AVPI*). Of these genes, only the *AVPI* genes were obviously expanded in all the seagrasses, containing almost twice the number of *AVPI* genes found on average in other angiosperms (Figure 3a and 3b). Interestingly, the expansion of *AVPI*-like genes can, at least partly, be linked to the ancient WGT followed by their specific retention, suggesting that these additional AVP copies were co-opted for adaptation to a marine lifestyle (Supplementary Figure 5.5.2). Indeed, overexpression of such PPases has been shown to improve salt tolerance in several angiosperms (e.g., *Arabidopsis*, poplar, sugar cane)^{57–59}, by enhancing Na^+ sequestration in the vacuole⁶⁰. Analysis of the K^+ -channel repertoire in seagrasses reveals the loss of Shaker-type K^+ channels (Supplementary Figure 5.4.2)⁶¹, and a greatly reduced number of CYCLIC NUCLEOTIDE GATE CATION CHANNELs (Figure 3a, 3b and Extended Data Table 7). Moreover, the constant high K^+ concentrations in seawater (9.7mM) renders high-affinity K^+ transport systems superfluous, explaining the absence of *AtHAK5* in all seagrass genomes (Figure 3a and 3b). Also, the Cl^- transporter repertoire is reduced in seagrasses (Figure 3a and 3b), and seagrasses lack orthologs for NPF2.4 and ALMT12/QUAC1, CLC-A, B and CLC-E, likely reflecting their adaptation to a marine lifestyle (Figure 3a and 3b).

Maintaining the elasticity of the cell wall is another critical component of salt tolerance. The elasticity and structural strength of the cell wall are mainly dictated by components such as cellulose and pectins that cross-link the cellulose microfibrils. The bivalent cation Ca^{2+} stiffens the cell wall by establishing electrostatic bond between pectin strands. The excess of monovalent Na^+ in seawater may displace the divalent calcium and hinder dimerization of homogalacturonan chains that are present in canonical pectin⁶². In addition to the canonical pectin polysaccharides, seagrasses deposit apiogalacturonan in their cell walls⁶³. The borate-bridges that cross-link apiogalacturonan chains are less sensitive to sodium displacement, providing an advantage to plants grown under high salt condition⁶⁴. One of the few known key enzymes in the synthesis of apiogalacturonan is UDP-D-apiose/UDP-D-xylose synthase (encoded by *Api*), which converts UDP-D-glucuronate into UDP-D-apiose⁶⁵. Its expansion in seagrasses (in particular in *Zostera* and *Cymodocea*) is reflected in the cell-wall composition of seagrasses and therefore likely contributes to salt tolerance (Figure 3a). In addition, the apiogalacturonan could provide a way to incorporate boron into the cell wall, and protect seagrasses against its toxic effects.

Compared to terrestrial lineages, no major changes were observed for cellulose and hemi-cellulose biosynthesis (Extended Data Table 7). Notably, most of the salt related evolutionary changes in seagrasses are not reflected in the genomes of mangrove species (*Avicinea marina* and *Rhizophora apiculata*), which is consistent with the independent evolution of salt tolerance in mangrove species^{66,67}.

Coping with hypoxic sediments—The solubility of oxygen in seawater is limited (typically around 10 mL O₂ L⁻¹), while the sediments in which seagrasses grow are oxygen-free and reducing below a sediment depth of a few mm. This increases the O₂ demand/draw-down by extensive belowground root-rhizome tissues that often comprise >50% of total plant biomass. Consistent with the increased risk of hypoxia, all seagrasses have expanded their repertoire of Plant Cysteine Oxidases (encoded by PCOs) and group VII Ethylene Responsive (*ERF-VIIs*) genes, for direct sensing and transcriptional adjustment to hypoxia (Figure 3a, 3e and Extended Data Table 8). As expected, most *ERF-VIIs* had higher expression in rhizomes and roots as compared to leaves (Supplementary Figure 5.5.1). Also, *P. acutifolius* contains an expanded hypoxia response machinery, reflecting its adaptation to submergence (Figure 3a). This is also supported by the transcriptome data of other Alismatales (Supplementary Figure 5.1)¹⁶. Again, many, if not most, *ERF-VII* members reside within syntenic blocks retained from the WGT event in seagrasses, especially for *P. oceanica* and *T. testudinum* (Supplementary Figure 5.5.2). Such increases in the number of genes through whole genome duplication is also true for multiple hypoxia-related genes. Some examples are: (1) the *PFK4* gene family, which encodes the rate-limiting enzyme in the glycolysis pathway (including enolases), expanded in both seagrasses and *P. acutifolius*, and derived from the WGT event (Supplementary Figure 5.5.2); (2) Lactate dehydrogenase, a rate-limiting enzyme in lactate fermentation, that is also expanded in seagrasses (Figure 3a and Extended Data Table 8) and has been shown to provide higher waterlogging tolerance in *Arabidopsis* upon overexpression⁶⁸; and (3) genes encoding the energy-sensing sucrose nonfermenting kinase *SnRK1*⁶⁹ and *eFiso4G1* (the dominant regulator in translational regulation by *SnRK1* under hypoxia⁷⁰) (Extended Data Table 8) are increased as a result of the WGT (Supplementary Figure 5.5.2). In conclusion, we speculate that the increase and specific retention of many hypoxia responsive genes, subsequent to the WGT (dated at ~86 Mya), might have coincided with the Cenomanian-Turonian anoxic event (~91± 8.6 Mya,^{71,72}); if true, this low oxygen period may have helped to select for hypoxia tolerance in submerged species. In *C. nodosa* and *P. acutifolius*, additional recent lineage specific WGDs and tandem duplications may have also contributed to further expansion of the hypoxia responsive genes as a possible adaptation to submergence.

Light perception and photosynthetic carbon acquisition—Seagrass growth and zonation are constrained by light availability, as ocean waters rapidly attenuate photosynthetic active radiation with depth and modify its spectral quality, enriching blue while reducing red wavelengths⁷³. Most seagrass species grow in shallow water and even in the clearest waters, only a few species reach depths of 40 m or more. Dissolved inorganic carbon (DIC) is mainly available as bicarbonate (HCO₃⁻) in seawater (nearly 90% DIC at normal pH) that needs to be exploited via special acquisition systems, as it cannot diffuse passively across the cell plasma membrane⁷⁴. The availability of dissolved CO₂ for

photosynthesis is instead limited to ~1% of the DIC pool, hence submerged plants and algae evolved CO₂-concentration and convergent evolution of HCO₃⁻ to CO₂ mechanisms (CCMs) to overcome this low availability. A recent report identified an evolutionary adaptation of RuBisCO kinetics across submerged angiosperms from marine, brackish-water and freshwater environments that correlates with the development and effectiveness of CCMs⁷⁵.

The analysis of genes related to inorganic carbon (Ci) acquisition revealed a slight increase in extracellular α -CA (encoding Carbonic Anhydrase α -type) copy number across the studied species (Supplementary Note 5.6.1). In *P. oceanica* and *P. acutifolius*, extra genes again have been specifically retained following the WGT event, although some copies also evolved local tandem duplications. α -CA OG0013954 was found to be specific to seagrasses (except for *T. testudinum*) and *P. acutifolius* (Extended Data Table 9 and Supplementary Table 5.6), and most of the corresponding genes are highly expressed in leaves (Supplementary Figure 5.6.1). This supports their involvement in Ci acquisition and possibly CCMs, as the presence of external CAs catalyzing the apoplastic dehydration of HCO₃⁻ to the RuBisCO substrate CO₂, together with a higher activity of the extrusion proton pumps⁷⁶, likely evolved to alleviate dissolved inorganic carbon limitation in most seagrass species⁷⁷.

Our findings of a retention of 15 C4-related genes after WGT or WGD events (of which two encode PEPC) support the hypothesis that *C. nodosa* could be a C4 species⁷⁸, similar to what has been observed in *P. acutifolius* (Extended Data Table 9). Notably, none of the studied seagrass species possesses the Serine-residue characteristic of C4 Phosphoenolpyruvate carboxylase (PEPC), thus likely ruling out that a terrestrial-like C4-based (biochemical) CCM system is operating in seagrasses. This would suggest the presence of some kind of C3-C4 intermediate metabolism. Alternatively, homologs to C4 genes could have a role in the resistance of seagrasses to a variety of abiotic stresses, including salt stress⁷⁹.

Consistent with an augmented need for light capture, seagrasses show an expansion of LHCB (encoding light-harvesting complex B) as compared to freshwater plants that occur close to the water surface (Supplementary Figure 5.6.2 and Supplementary Note 5.6.2). Only *C. nodosa* had a number of LHCB genes comparable to the freshwater *P. acutifolius* and *Spirodela* spp. Other components of the photosynthetic machinery, including Photosystems I and II, are similar in gene number to other species, either freshwater or terrestrial (Supplementary Figure 5.6.2). Seagrasses have conserved the full repertoire of orthologous genes encoding photosensory proteins and components of the light signaling systems (Supplementary Figure 5.6.4 and Supplementary Note 5.6.3) that evolved in the green lineages during the different stages of plant terrestrialization⁸⁰.

Species-specific adaptation to UV tolerance and downstream regulation, and its relation to light habitat features during the invasion of the marine environment, appear to have differed among seagrass lineages (Supplementary Note 5.6.3). Those living at lower latitudes with intense UV-B radiation throughout the year (*T. testudinum* and *C. nodosa*) have kept the typical *UVR8* of land plants along with their main regulatory proteins (encoded by *RUP1,2*).

In contrast, *Z. marina*, as a higher latitude species, has lost the genes for both photoreceptors and their main negative regulatory proteins (Supplementary Figure 5.6.4), consistent with its lower exposure to UV-B radiation. In *P. oceanica*, a species restricted to the Mediterranean, the orthologous gene for *UVR8* lacks the sequence region C27 engaged in the regulation of UVR8 reversion state from the activated to the inactivated state. The species-specific adaptation in the UV-signaling and its negative feedback regulation (Supplementary Figure 5.6.5), further reinforce the idea that ‘tweaking’ and not massive change of key traits and their regulatory mechanisms facilitated the invasion of the marine environment.

Perception of surrounding light cues is also critical for the entrainment of the circadian clock system which in turn is essential for regulation of basic physiology and the life cycle, e.g., daily water and carbon availability, and hormone signaling pathways⁸¹. All seagrass species, except *T. testudinum* have lost the *TIMING OF CAB1* (encoded by *TOC1*) gene (Supplementary Figure 5.6.4). The general reduction of clock genes in aquatic species suggests that the “absence of drought”, has led to a reduction of the regulatory daily-timing constraints for some metabolic and developmental plant processes. We find it interesting that all seagrasses have retained some genes related to the phytochromes light-signaling pathway. These include *PIFs* and *LAF1* (Supplementary Figure 5.6.4) following WGT and WGD events, as well as genes related to the circadian clock and photoperiodism such as *GI* and *ZTL* (Supplementary Figure 5.6.4).

No Apical Meristem (NAC) Transcription Factors (TF)—NAC transcription factors (TF) are among the largest plant-specific-transcription factor (TF) families involved in signaling crosstalk events. They mediate development and aging programs and environmental stress signals. While a comparable number of sequences are found in seagrasses as compared to land plants, freshwater and mangrove species, specific orthogroups were restricted to seagrasses. One of them is annotated as Transcription factor JUNGBRUNNEN 1 (encoded by *JUB1*), a central longevity regulator that is also involved in (salt) stress tolerance. A detailed screening of sequences annotated as *JUB1* across other plant genomes reveals sequence similarities and functional reorganizations among *JUB1* found in *C. nodosa* and *P. oceanica*. Besides the sequence similarity between the two species, only *C. nodosa* sequences are expressed (Supplementary Note 5.7 and Supplementary Figure 5.7). This difference in functional regulation could potentially be linked to the different ecological tolerance of the two species to environmental factors. Although the two species can coexist, *C. nodosa* can colonize enclosed and shallow environments, which have higher fluctuation range and speed of salinity, light and temperature.

Nitrogen Metabolism—Key genes linked to nitrogen uptake/transport and assimilation have been retained in all seagrasses examined, although nitrate transporters (encoded by *NRTs*) are strongly contracted (Extended Data Table 10 and Supplementary Note 5.8). This implies that seagrasses may have evolved alternative mechanisms for nitrogen uptake and utilization. Although our results are not particularly revealing in this regard, recent work on seagrass microbiomes has shown that nitrogen acquisition involves nitrogen-fixing bacteria in the roots⁸² and that epiphytic micro-organisms on the leaves mineralize amino acids via

their heterotrophic metabolism⁸³. Gaining a more mechanistic understanding of the plant role in these interactions, is now possible for future investigations, given these new genomes.

Flower Development—Sexual reproduction in seagrasses occurs underwater (hydrophilous) by completely submerged male and female (unisexual) flowers. Their floral structures are simplified, often having reduced, or no, sepals and petals, which may represent an adaptation to hydrophilous, and mostly abiotic, pollination⁸⁴. However, this striking morphological adaptation is not reflected by a striking loss of genes defining the well-known ABC(D)E model for floral organ-specification^{85,86} (Supplementary Table 5.9 and Figure 4a). In *Z. marina*, the B-function (encoding *PISTILATA*) homolog seems to be mainly expressed in the staminate (“male”) flower, while two C-function homologs (*AGAMOUS*; *AGa* and *AGb*) were mainly expressed in the pistillate (“female”) flower (Figure 4d), suggesting involvement of the B-function only in stamen development, and C-function in carpel development. In *P. oceanica*, the expression patterns differ from those in *Z. marina*, but largely agree with previously ascribed roles in floral organ patterning: B-function *PI* and C-function *AG* homologs are highly expressed in both staminate and pistillate flowers (Figure 4e). However, in both seagrasses, one A-function homolog, *AGL6*, is highly expressed in pistillate flowers, indicating the possibility of A-function neofunctionalization, transitioning from a role in sepals and petals to one being associated with pistillate flower development. The two *SEPE*-function homologs of three seagrasses are highly expressed in pistillate and staminate flowers, indicating an essential role of these flower-specific co-factors in organ specification. The discrepancy between the floral simplification and the presence of all types of floral organ identity genes in the seagrass genomes may reflect the instability of the floral ground plan between alismatid lineages⁸⁷, and is possibly affected by neofunctionalisation and shifts in expression domains of floral identity genes.

Hydrophilous pollination is extremely rare outside the seagrasses, leading to the proposal that it is one of the defining features of seagrasses²⁶. The majority of seagrasses have flexible, filiform pollen in which a rigid exine layer is structurally reduced or absent⁸⁸, likely facilitating hydrophilous pollination. Consistent with the loss or severe reduction of the exine layer, many genes involved in the biosynthesis and secretion of the exine layer (Supplementary Note 5.9) are absent in *Z. marina*¹⁵, while *C. nodosa*, *P. oceanica*, and *T. testudinum* show partial gene loss (Figure 4f). It will be of interest to also investigate the role of pollen-specific genes, such as an orthologs of RESTORER OF FERTILITY 1 (encoded by *RF-1*), in the evolution of hydrophilous pollination. Supplementary Figure 5.9 shows flower and pollen development toolkit gene family expansion and contraction values for 96 species, including the 90 species-transcriptome data set of Chen et al.¹⁶.

Conclusion

Seagrasses are now recognized as foundational species for invaluable ecosystems that provide multiple functions and services⁹. They prevent erosion and hence preserve coastal seascapes, serve as biodiversity hotspots for associated animals, algae and plants, and have recently been proposed as a nature-based solution for climate mitigation owing to their carbon storage capacity in belowground biomass⁸⁹. Seagrasses also represent an extremely rare adaptation in the world of flowering plants, unlike (re-)adaptation to freshwater

environments, which occurred at least 222 times in embryo-bearing plants⁹⁰. As far as is known, in part due to an extremely poor fossil record, seagrasses have evolved only on three different occasions from freshwater ancestors to (a group of) species that lives continuously submerged in a highly saline environment, including subaqueous pollination (except in *Enhalus acoroides*⁹¹). Why only 84 species, spread across the three lineages, emerged in a time interval of 100 Mya, remains unresolved, but it may be related to high ocean connectivity on one hand⁹², while within-species, ecological tolerance and phenotypic plasticity is high⁹³.

Comparative genome analysis has unveiled considerable convergence in seagrasses, but mainly for processes and pathways that have become redundant or even detrimental in a submerged marine environment. These include genes for stomata development, ethylene biosynthesis and signaling, pollen-coat formation, disease resistance, and heat shock transcription factors (HSFs). Jointly, these results illustrate that the invasion of the marine environment is associated with a significant loss of genes in multiple pathways that are no longer needed, a compelling example of “use it or lose it.”

Clear evidence of convergent positive (or gain of function) adaptation among the different lineages of seagrasses is harder to establish. Rather than unveiling major biological innovations including the rewiring of biological networks, adaptation to the marine environment seems mainly to involve the fine-tuning of many different/supportive processes that likely all had to happen in parallel, possibly explaining why the transitioning to a marine lifestyle has been exceedingly rare. For instance, adaptation of seagrasses to a marine (saline) environment was not accompanied by massive changes to individual salt tolerance traits, but rather involved more subtle changes in gene copy number and regulatory mechanisms, along with structural adaptations of the cell walls. This gradual modulation of preexisting mechanisms is consistent with the presence of multiple less extreme halophytes within alismatid families⁹⁴. The fine-tuning of many biological processes may also have facilitated the considerable phenotypic plasticity displayed by seagrass populations allowing their colonization from the tropics to the poles.

Many of the genes co-opted in different pathways in seagrasses seem to have been specifically retained following WGDs and WGTs that occurred long ago, suggesting important interdependencies of large-scale (or major) genome evolution events and evolutionary adaptation. Prime examples identified here are hypoxia-responsive genes, genes involved in salt tolerance, flavonoid metabolism, carbon acquisition, and C4-like photosynthesis. Therefore, the co-option of extra genes specifically retained following ancient whole genome duplications likely played a crucial role in facilitating survival in a marine environment.

We expect that the new, high-quality, seagrass genomes presented here will accelerate experimental and functional studies and contribute to transformative solutions in the management and conservation of seagrass ecosystems, which is an urgent concern in times of climate change and marine biodiversity crisis given the continuing worldwide loss of seagrass meadows.

Methods

Sampling metadata, DNA and RNA preparation

Whole plants from each species were collected from the field, transported to the lab in a cool box, cleaned, frozen in LN₂ and then stored at -80°C. Collection and processing information are summarized in Supplementary Table 1.1. All samples were made with collection permits and followed the CBD-Nagoya Protocol. Care was taken to use tissue harvested from the basal area of young, clean leaves (10-cm pieces) to minimize epiphytic diatoms and bacteria. If necessary, the seagrass tissues were then sent by overnight courier on dry ice to the Arizona Genomics Institute, Tucson, AZ, USA for extraction of nucleic acids (<https://www.genome.arizona.edu>). Quality controlled nucleic acid samples were then shipped on dry ice to the Joint Genome Institute (JGI) in Berkeley, CA, USA (<https://jgi.doe.gov/>) for further diagnostics and sequencing library preparation. For *P. acutifolius*, nucleic acids were extracted, QC'd and sequenced at the Max Planck-Genome-Centre Cologne, Germany (<https://mpgc.mpiiz.mpg.de/home/>).

High Molecular Weight (HMW) DNA was extracted from young leaves of *T. testudinum*, *P. oceanica*, and *C. nodosa*, using the protocol of Doyle and Doyle (1987)⁹⁵ with minor modifications. Young leaves, that had been flash frozen in LN₂ and kept frozen at -80°C, were ground to a fine powder in a frozen pestle and mortar with LN₂ followed by very gentle extraction in CTAB buffer (that included proteinase K, PVP-40 and β-mercaptoethanol) for 20 mins at 37°C, followed by 20 mins at 50°C. Following centrifugation, the supernatant was gently extracted twice with 24:1 chloroform: iso-amyl alcohol. The upper phase was adjusted to 1/10th volume with 3M Sodium acetate (pH=5.2), gently mixed, and DNA precipitated with iso-propanol. DNA was collected by centrifugation, washed with 70% EtOH, air dried for few minutes and dissolved thoroughly in 1x TE at room temperature. Size was validated by pulsed field electrophoresis. HMW DNA for *P. acutifolius* was extracted from 2 g of young leaves with the NucleoBond HMW DNA kit (Macherey Nagel). Quality was assessed with a FEMTOpulse device (Agilent) and the quantity was measured by a Quantus fluorometer (Promega).

RNA was extracted from seagrass leaves, rhizomes, roots, and flowers (Supplementary Table 1.1) with the NucleoSpin RNA Plant and Fungi Kit (Macherey-Nagel, USA), and checked for integrity by capillary electrophoresis using an Agilent (Santa Clara, CA, USA) 2100 Bioanalyzer with the Agilent RNA 6000 Nano Kit following manufacturer's instructions. RNA was extracted from leaves and roots of *P. acutifolius* with the RNAeasys Plant Kit (Qiagen), including an on-column DNase I treatment. Quality was assessed with an Agilent Bioanalyser and the quantity was calculated by an RNA-specific kit from Quantus (Promega).

Genome Sequencing

The genomes of *T. testudinum*, *P. oceanica*, and *C. nodosa* were determined following a whole genome shotgun sequencing strategy and standard sequencing protocols. Sequencing reads were produced using the Illumina NovaSeq platform and the PacBio SEQUEL II platform at the Department of Energy (DOE) Joint Genome Institute (JGI) in Walnut

Creek, California, and the Hudson Alpha Institute in Huntsville, Alabama. One 400bp insert 2x150 Illumina fragment library and one HiC library was sequenced for each organism. Technical sequencing statistics are summarized in Supplementary Table 2.1.1. Prior to assembly, Illumina fragment reads were screened for PhiX contamination and reads composed of >95% simple sequences were removed. Furthermore, Illumina reads <50bp, after trimming for adapter and checking for quality ($q < 20$), were also removed. For the Illumina sequencing, the final combined read set consisted of 4,284,278,120 high-quality reads with 161x coverage for *T. testudinum*, 6,543,657,580 high-quality reads with 327x coverage for *P. oceanica*, and 693,903,610 high-quality reads with 208x coverage for *C. nodosa*. For the PacBio sequencing, a total of 18 PB chemistry 3.1 chips (30-hour movie time) were sequenced with a HiFi read yield of 231.8 Gb with 51.53x coverage, 238.3 Gb with 79.44x coverage and 39.6 Gb with 79.24x coverage for *T. testudinum*, *P. oceanica* and *C. nodosa*, respectively.

For *P. acutifolius*, all libraries (PacBio, RNA and Tell-seq) and PacBio HiFi sequencing were performed at the Max Planck-Genome-Centre Cologne, Germany (<https://mpgc.mpipz.mpg.de/home/>). Short-read libraries and sequencing (RNA-seq and Tell-seq) were performed at Novogene Ltd (UK), using a NovaSeq 6000 S4 flowcell Illumina system. An Illumina-compatible was prepared with the NEBNext® Ultra™ II RNA Library Prep Kit for Illumina. PacBio-HiFi libraries were prepared according to the manual “Procedure & Checklist - Preparing HiFi SMRTbell® Libraries using SMRTbell Express Template Prep Kit 2.0” with an initial DNA fragmentation by g-Tubes (Covaris) and final library size selection on BluePippin (Sage Science). Size distribution was again controlled by FEMTOPulse (Agilent). Size-selected libraries were sequenced on a Sequel II with Binding Kit 2.0 and Sequel II Sequencing Kit 2.0 for 30 h (Pacific Biosciences). The same genomic DNA was used for TELL-seq but without fragmentation. Library preparation was done as outlined in the manual “TELL-Seq™ WGS Library Prep User Guide” (ver. November 2020). Illumina “sequencing-by-synthesis” was performed on a HiSeq 2500, 2 x 250 bp with additional index sequencing cycles to read out the unique fragment barcodes. Sequences were analyzed as recommended by Universal Sequencing Technology (UST, Canton, U.S.A). The final combined read set consisted of 54,401,190 Illumina high-quality reads with 13.4 coverage and 1,900,000 PacBio HiFi reads with 43.5 coverage (Supplementary Table 2.1.1)

Genome assembly

For *T. testudinum*, *P. oceanica* and *C. nodosa*, the following assembly strategy was used: the PacBio HiFi data was assembled using HiFiAsm and subsequently polished using RACON (<https://github.com/lccb-sci/racon>). Due to the high heterozygosity of our sequenced seagrasses, both haplotypes were nearly complete resulting in a genome assembly composed of a highly contiguous primary set of chromosomes and a more fragmented alternative set of chromosomes (Supplementary Figure 2.1.1). For *T. testudinum*, the initial primary assembly consisted of 1,987 contigs with a contig N50 of 483.4 Mb, and a total assembled size of 4,866.1 Mb. For *P. oceanica*, the initial primary assembly consisted of 3,470 contigs, with a contig N50 of 355.8 Mb, and a total assembled size of 3,192.0 Mb (Supplementary Table 2.1.2). For *C. nodosa*, we produced an initial primary assembly of

1,362 contigs, with a contig N50 of 18.5 Mb, and a total assembled size of 466.0 Mb (Supplementary Table 2.1.2). Misjoins in the assemblies were identified using HiC data as part of the JUICER/JuiceBox pipeline⁹⁶ for each of the three seagrass genomes. After resolving the misjoins, the broken contigs were then oriented, ordered, and joined together with HiC data using the JUICER/JuiceBox pipeline. In *T. testudinum*, there were 5 misjoins identified in the polished primary assembly, and a total of 15 joins were applied to the primary assembly to form the final assembly consisting of 9 chromosomes. In both the *P. oceanica* and *C. nodosa* polished primary genomes, there were no misjoins identified. A total of 6 joins were applied to the primary assemblies of *P. oceanica* and *C. nodosa* to form the final assembly consisting of 10 chromosomes and 18 chromosomes, respectively. Each chromosome join is padded with 10,000 Ns. Significant telomeric sequence was identified using the (TTTAGGG)_n repeat, and care was taken to make sure that contigs terminating in telomere were properly oriented in the production assembly. The remaining scaffolds were screened against bacterial proteins, organelle sequences, GenBank nr and removed if found to be a contaminant. Heterozygous SNP/indel phasing errors were corrected using the HiFi data (51.53x for *T. testudinum*, 79.44x for *P. oceanica* and 79.24x for *C. nodosa*). Finally, homozygous SNPs and indels were corrected in the releases using Illumina reads (2x150, 400bp insert). A total of 2,613 homozygous SNPs and 82,421 homozygous indels were corrected in *T. testudinum*. A total of 1,643 homozygous SNPs and 100,570 homozygous indels were corrected in *P. oceanica* and total of 1,426 homozygous SNPs and 12,492 homozygous indels were corrected in the *C. nodosa*. Due to the high heterozygosity of the three genomes, both haplotypes of each chromosome were well represented in the assemblies. The primary set of chromosomes were constructed from the primary assembly, while an alternative set of chromosomes were constructed from the alternate assembly. Chromosomes for the alternate haplotype were then oriented, ordered, and joined together using synteny from the primary chromosomes (Supplementary Table 2.1.3).

For *Potamogeton acutifolius*, we used HiFiAsm⁹⁷ to assemble a draft genome assembly of a total length of 611 Mb with N50 = 3.09 Mb and scaffolded it further with Tell-seq data (linked reads; [bioRxiv 2019, 852947](https://doi.org/10.1101/2019.08.29.292947)) using the ARCS software⁹⁸ and reaching final N50 = 4.45 Mb (6,705 scaffolds in total, the length of the largest scaffold = 31.2 Mb).

Genome annotation

Structural and functional annotation of genes—Our annotation pipeline integrated three independent approaches, the first one based on transcriptome data, the second one being an *ab initio* prediction and the third based on protein homology. Both RNA-seq and Iso-seq data from different tissues (Supplementary Table 3.2.1 – Supplementary Table 3.2.4) were used to aid the structural annotation and RNA-seq datasets were first mapped using Hisat2 (v2.1.0, arguments dta)⁹⁹ and subsequently assembled into transcript sequences by Stringtie2¹⁰⁰, whereas Iso-seq sequences were aligned to the seagrass genome using GMAP¹⁰¹. All transcripts from RNA-seq and Iso-seq were combined using Cuffcompare (v2.2.1) and subsequently merged with Stringtie2 (arguments merge -m 150) to remove fragments and redundant structures¹⁰⁰. Transdecoder v5.0.2 (github.com/TransDecoder) was then used to predict protein sequences with diamond v2.0.14 results (evaluate 1e-5 max-target-seqs 1 -f 6). BARKER v2.1.2¹⁰² was used for *ab initio* gene prediction using model training based on

RNA-seq data. Homology-based annotation was based on the protein sequences from related species (*Z. marina* v1.0, *Spirodela polyrhiza*, *Oryza sativa* and *Arabidopsis thaliana*) as query sequences to search the reference genome using TBLASTN with e-value $1e^{-5}$, then regions mapped by these query sequences were subjected to Exonerate to generate putative transcripts. Additionally, an independent, homology-based gene annotation was performed using GeMoMa¹⁰³ using the same species with TBLASTN.

All structural gene annotations were joined with EvidenceModeller¹⁰⁴ v1.1.1, and BUSCO v4.0.4 (Benchmarking Universal Single-Copy Orthologs)¹⁰⁵ was used to assess the quality of the annotation results. Finally, we used GenomeView¹⁰⁶ to do the gene curations manually based on the RNA-seq and Iso-seq data. Putative gene functions were identified using InterProScan¹⁰⁷ with different databases, including PFAM, Gene3D, PANTHER, CDD, SUPERFAMILY, ProSite and GO. Meanwhile, functional annotation of these predicted genes was obtained by aligning the protein sequences of these genes against the sequences in public protein databases and the UniProt database using BLASTP with the e-value $1e^{-5}$.

Annotation of non-protein coding RNA families—Finished genome assemblies and annotations (genome.fasta and genome.gff files for *Z. marina*, *C. nodosa*, *P. oceanica*, *T. testudinum* and *P. acutifolius*) were uploaded to, and later downloaded from, JGI Phytozome¹⁰⁸. Infernal v1.1.4 (Dec 2020)¹⁰⁹ was used to perform sequence similarity searches of each genome sequence versus the RFAM database (RNA families database, Dec2021)¹¹⁰. The output from Infernal was filtered, keeping only the hits with an E-value threshold $E < 0.01$. A second filtering step was performed to remove redundant information, i.e., overlapping matches with similar hits. A third filtering step was performed by retaining all the hits matching with a coverage of at least 95% and removing all partial/fragmented matches with incomplete hits from the reference collection. rRNA, tRNA, snoRNA and miRNA regions were selected and annotated in the annotation.jff files for each species. An updated functional annotation including the identified loci in the genomes was performed by scanning the Uniprot database¹¹¹ with BLASTp³. Introns and the corresponding sequence regions were extracted by GenomeTools¹¹² and Bedtools¹¹³ programs. The functional annotation of the long introns ($\geq 20\text{kb}$) was performed by similarity searches in the NCBI nucleotide¹¹⁴ database with the BLASTn tool³.

Annotation of repeats and transposable elements (TEs)—Two complementary approaches were used to identify repetitive DNA sequences. First, a *de novo* repeat identification was carried out with RepeatModeler v2.0.1 (<https://www.repeatmasker.org/RepeatModeler/>) based on the default TE Rfam database, followed by RepeatMasker v4.1 (<https://www.repeatmasker.org/>) to discover and classify repeats based on the custom repeat libraries from RepeatModeler v2.0.1. Second, LTR_Finder¹¹⁵ (v1.0.7), LTR_harvest¹¹⁶ from genomertools (v1.5.9) and LTR_retriever¹¹⁷ (v2.9.0) were used to identify and trace the LTR elements, which were subsequently characterized at clade/lineage level by searching coding domains within the sequences, using the tool Domain based ANnotation of Transposable Elements (DANTE) (<https://github.com/kavonrtep/dante>). Transposable elements not classified by RepeatModeler were analyzed using DeepTE¹¹⁸. We merged

the libraries from RepeatModeler, LTR_retriever and DeepTE using USEARCH¹¹⁹ with 80% identity as the minimum threshold for combining similar sequences into the final non-redundant de novo repeat library. Finally, we used RepeatMasker v4.1.0 (-e rmbblast -gff -xsmall -s -norna -no_is - lib) to identify and classify repeats in the genome assemblies of seagrasses and *Potamogeton*.

Dating bursts of repeats in seagrass genomes—The identification of high-quality intact LTR-RTs and the calculation of insertion age for intact LTR-RTs were carried out using LTR_retriever (v2.9.0), using the formula $T=K/2r$. The nucleotide substitution rate “r” was set to 1.3e-8 substitutions per site per year¹²⁰.

Identifying Whole Genome Duplications

K_S age distributions and gene tree-species tree reconciliation—K_S age distribution analysis was performed using the wgd package¹²¹. Anchor pairs (i.e., paralogous genes lying in collinear or syntenic regions of the genome) were obtained using i-ADHoRe¹²². K_S distribution analysis was also performed using the KSRATES software¹²³, which locates ancient polyploidization events with respect to speciation events within a phylogeny, comparing paralog and ortholog K_S distributions, while correcting for substitution rate differences across the involved lineages (see Supplementary Note 4.2.1).

OrthoFinder¹²⁴ was used to build orthologous gene families. For each orthogroup, a multiple sequence alignment (MSA) based on amino acid sequences was obtained using PRANK¹²⁵ and then used as input for Markov Chain Monte Carlo (MCMC) analysis in MrBayes¹²⁶. A time-calibrated species tree was inferred by MCMCtree from the PAML package¹²⁷, using reference speciation times of 42–52 million years ago (MYA) for the divergence between *Oryza sativa* and *Brachypodium distachyon*, 118–129 MYA for that between *Spirodela polyrhiza* and *Z. marina*, and 130–140 for that between *Spirodela* and other terrestrial monocots¹²⁸. A gene duplication-loss (DL)+WGD model, under critical and relaxed branch-specific rates, was implemented for the inference of the significance and corresponding retention rates of the assumed WGD events under Bayesian inference²⁵. (see Supplementary Note 4.2.2)

Absolute dating of WGDs—Absolute dating of WGD events followed an approach previously described for *Zostera marina*¹⁵. Paralogous gene pairs located in duplicated segments (so-called anchors) and duplicated pairs lying under the WGD peak (so-called peak-based duplicates) were collected for phylogenetic dating. Anchors, which are assumed to correspond to the most recent WGD, were detected using i-ADHoRe 3.0¹²². For each WGD paralogous pair, an orthogroup was created that included the two paralogues plus several orthologues from other plant species, as identified by InParanoid (v. 4.1)¹²⁹, using a broad taxonomic sampling. Gene duplicates were then dated using the BEAST v. 1.7 package¹³⁰ under an uncorrelated relaxed clock model with the LG+G (four rate categories) evolutionary model. A starting tree with branch lengths satisfying all fossil-prior-constraints was created according to the consensus APGIII phylogeny. Fossil calibrations were implemented using log-normal calibration priors (see Supplementary Note 4.2.3).

Time-calibrated tree construction—Protein sets were collected for 23 species (see Supplementary Note 4.3). These species were selected as representatives for monocots and eudicots, and representing different habitats from terrestrial, freshwater-floating, freshwater-submerged, to marine-submerged. Orthofinder v2.3¹³¹ was used to delineate gene families with mcl inflation factor 3.0. All-versus-all Diamond blast with an E-value cutoff of $1e-05$ was performed and orthologous genes were clustered using OrthoFinder. Single-copy orthologous genes were extracted from the clustering results. MAFFT¹³²) with default parameters was used to perform multiple sequence alignment of protein sequences for each set of single-copy orthologous genes, and to transform the protein sequence alignments into codon alignments after removing the poorly aligned or divergent regions using trimAl¹³³. The resulting codon alignments from all single copy orthologs were then concatenated into one supergene for species phylogenetic analysis. A maximum-likelihood phylogenetic tree of single-copy protein alignments and codon alignments was constructed using IQ-TREE¹³⁴ with the GTR+G model and 1,000 bootstrap replicates. Divergence times between species were estimated using MCMCtree from the PAML package under the GTR+G model (see Supplementary Note 4.3).

Gene family comparisons—Gene families analyzed in the paper were searched in the output from Orthofinder and a master table was compiled to show the detailed information for each orthogroup, which is defined as the group of genes from multiple species descended from a single gene in the last common ancestor. For the superfamilies, we used the phylogenetic tree to further classify them into subfamilies. We adopted a custom criterion to assess the expansion and contraction of gene families. If the average gene number in seagrasses increased or reduced by >40% compared to non-seagrass species, we called it expansion or contraction. Syntenic analysis of genes are performed using MCScanX¹³⁵ and i-ADHoRe¹²². Lastly, circos plots were drawn using Circos¹³⁶.

Extended Data

Orthogroup	Gene name	Seagrasses				Freshwater species			Mangrove		Moconots					Eudicots							ATR	average non seagrasses	average in seagrasses	enrichment in seagrasses	
		CN	PO	TT	ZM	PA	SP	WA	AM	RA	OS	BD	AC	EG	AO	BV	UG	SL	CC	VV	PT	AT					TC
OG0007504	KAT1/2	0	0	0	0	0	0	0	1	1	3	3	2	2	3	2	0	2	1	1	1	2	1	1	1.4	0	-1.4
OG0007602	CHX20	0	0	0	0	1	1	1	0	1	1	1	1	3	2	1	2	1	2	2	1	1	3	1	1.4	0	-1.4
OG0008443	SPCH	0	0	0	0	0	0	2	4	1	2	2	1	1	1	1	2	1	1	1	2	1	1	1	1.4	0	-1.4
OG0010600	FAMA	0	0	0	0	1	0	1	1	2	1	1	1	1	1	2	1	2	1	1	2	1	1	1	1.2	0	-1.2
OG0010778	MUTE	0	0	0	0	0	1	2	2	1	1	1	1	2	1	1	1	1	1	1	1	1	1	1	1.2	0	-1.2
OG0011023	EPF2	0	0	0	0	0	1	1	1	0	2	2	2	0	3	1	0	1	0	1	1	2	1	1	1.1	0	-1.1
OG0011265	EPFL9	0	0	0	0	0	1	0	3	1	2	1	1	2	1	1	0	1	0	1	1	1	1	1	1.1	0	-1.1
OG0011287	EPF1	0	0	0	0	1	1	0	1	1	0	0	1	1	1	1	1	1	1	2	3	1	1	1	1	0	-1
OG0011459	BLUS1	0	0	0	0	0	1	1	0	1	1	1	1	1	1	1	0	1	1	1	3	1	1	1	1	0	-1
OG0012246	TMM	0	0	0	0	0	1	1	1	1	1	1	1	0	1	0	0	1	1	0	1	1	1	1	0.8	0	-0.8
OG0013441	BASL	0	0	0	0	0	0	0	1	1	0	0	0	0	0	0	4	1	1	0	1	1	0	0	0.6	0	-0.6
OG0000002	MYB60	28	25	25	12	25	21	12	19	2	26	28	27	2	27	18	21	30	24	37	44	27	32	14	22.8	22.5	-0.3
OG0000010	ABCG3	7	14	8	10	14	18	13	0	18	24	15	14	16	21	11	14	25	23	31	24	15	25	15	17.9	9.8	-8.1
OG0000040	STP	3	7	5	6	10	4	3	11	1	14	14	14	13	9	10	8	12	10	9	24	11	14	7	10.4	5.3	-5.2
OG0000102	SnRK2.6	8	5	5	4	6	6	5	11	8	11	10	7	2	7	5	1	8	11	8	13	10	7	4	7.4	5.5	-1.9
OG0000274	CNGC14	4	4	2	2	5	4	2	7	5	5	6	4	7	2	7	0	6	6	6	5	5	6	2	4.7	3	-1.7
OG0000293	CPK	5	4	4	4	6	4	2	6	2	4	4	3	1	3	4	4	6	4	4	6	8	5	3	4.1	4.3	0.2
OG0000927	ABI1	2	2	1	1	2	3	2	7	3	3	3	3	4	2	1	2	4	3	3	3	4	3	1	3	1.5	-1.5
OG0001440	SCRM	1	2	3	1	1	2	1	5	2	2	2	2	4	3	2	4	2	2	3	2	2	2	3	2.5	1.8	-0.8
OG0001443	PHU11/2	3	3	2	2	4	2	2	2	2	3	2	2	2	2	2	2	2	2	2	3	2	2	2	2.1	2.5	0.4
OG0001444	ER/ERL1/ERL2	2	2	2	3	1	2	5	3	4	3	2	2	0	2	1	0	2	3	2	3	3	2	2	2.3	2.3	0
OG0001734	SKOR/GORK	1	1	1	1	1	1	1	3	2	2	3	2	2	4	2	3	3	2	5	3	2	2	2	2.4	1	-1.4
OG0002166	YODA	2	2	1	2	2	1	1	5	3	2	2	1	1	2	1	1	3	1	3	4	1	2	1	1.9	1.8	-0.2
OG0002436	GRP7	1	2	1	1	2	2	3	3	1	2	2	3	1	2	1	2	3	2	1	2	2	1	2	1.9	1.3	-0.7
OG0004112	MYB88	0	1	1	1	1	2	1	3	2	1	1	2	2	2	1	2	2	1	1	2	2	1	1	1.6	0.8	-0.9
OG0004841	POLAR	1	1	2	1	1	1	0	1	0	3	4	2	2	2	1	0	1	1	0	2	2	1	2	1.4	1.3	-0.1
OG0005143	TPK1	1	1	1	1	2	1	1	1	1	3	3	1	1	1	1	1	1	1	1	2	2	1	1	1.3	1	-0.3
OG0006635	MPRS	1	1	1	1	1	1	0	3	1	1	1	2	2	1	1	1	1	1	1	2	1	1	1	1.2	1	-0.2
OG0010592	HT1	1	1	1	1	1	1	1	0	1	1	1	1	0	1	1	0	2	1	0	2	1	1	1	0.9	1	0.1
OG0010864	SLAC1	0	1	0	1	1	1	1	1	1	1	1	1	1	0	1	1	1	1	1	1	1	1	1	0.9	0.5	-0.4

	Orthogroup	Gene name	Seagrasses				freshwater species			Mangrove		Monocots					Eudicots							ATR	average non seagrasses	average in seagrasses	enrichment in seagrasses	
			CN	PO	TT	ZM	PA	SP	WA	AM	RA	OS	BD	AC	EG	AO	BV	UG	SL	CC	VV	PT	AT					TC
TPS	OG0000073	Terpene synthase - TPS	0	0	0	0	0	0	0	11	0	30	13	4	9	1	8	0	14	17	30	13	22	18	2	10.7	0	-10.7
	OG0000414	TPS-CIN1	1	1	1	0	1	4	0	3	0	0	3	1	1	4	3	1	12	14	4	11	6	8	9	4.7	0.8	-3.9
	OG0001267	SQE	1	2	3	1	1	1	1	7	2	2	1	1	2	2	2	1	2	4	5	4	3	7	1	2.7	1.8	-0.9
	OG0003488	TPS14	0	0	0	0	0	0	0	2	4	2	2	3	0	1	3	0	2	1	6	2	1	4	4	2.1	0	-2.1
	OG0003932	squalene synthase	1	1	3	1	1	1	1	2	1	2	2	1	2	1	2	0	4	1	1	2	2	1	1	1.5	1.5	0
	OG0004390	TPS31/GA1	1	1	1	1	1	2	1	2	2	3	1	2	1	1	1	1	1	2	2	2	1	1	1	1.5	1	-0.5
	OG0008991	CYP705A5	0	0	0	0	0	0	0	0	0	0	0	0	0	0	0	0	0	0	0	0	25	0	0	1.4	0	-1.4
	OG0011463	TPS04	0	0	0	0	0	0	0	0	0	0	0	0	0	1	3	0	1	2	4	1	1	3	2	1	0	-1
	OG0014737	CYP708A2	0	0	0	0	0	0	0	0	1	3	1	0	0	0	0	0	0	0	0	1	1	0	0	0.4	0	-0.4
	MeSA	OG0000086	JMT, BSTM1	4	6	3	2	2	3	0	6	2	20	6	11	4	6	16	1	10	13	17	10	9	14	10	8.8	3.8
OG0000120		CHL1	5	6	4	4	3	4	4	8	5	14	12	7	2	8	6	6	15	5	6	5	7	6	10	7.2	4.8	-2.5
OG0000199		LOX3	3	4	2	2	5	7	9	1	4	8	5	6	1	5	7	2	6	4	8	9	4	10	6	5.7	2.8	-2.9
OG0000306		NPF	4	3	4	3	4	2	1	8	6	6	4	3	2	3	3	5	7	3	5	6	5	3	3	4.3	3.5	-0.8
OG0000394		ABCG1/2/6/20	4	6	3	6	4	3	1	5	2	5	5	4	3	1	3	2	4	2	2	5	8	5	1	3.4	4.8	1.4
OG0000542		JAZ1	3	2	4	2	4	2	2	2	5	4	5	3	4	6	2	8	3	2	2	3	4	2	1	3.3	2.8	-0.6
OG0000649		AOX2	3	4	3	3	4	3	4	1	2	3	4	1	1	4	4	3	4	3	3	4	5	2	2	2.9	3.3	0.3
OG0000886		NPF1.2	0	0	0	0	0	0	0	4	0	1	1	0	0	1	6	1	17	12	3	11	2	4	1	3.6	0	-3.6
OG0001204		CYP94C1	2	3	1	2	4	3	1	6	4	4	4	1	4	0	2	0	2	2	3	4	1	3	0	2.4	2	-0.4
OG0001236		NPF8.1	1	1	1	9	2	1	1	2	2	2	2	2	0	3	1	3	4	2	1	5	1	4	2	2.1	3	0.9
OG0001254		JOX1	2	4	2	2	2	0	1	5	1	4	4	5	0	2	1	1	3	2	2	5	4	2	1	2.4	2.5	0.1
OG0001476		JAR1	2	4	3	2	3	3	1	3	2	2	2	2	3	2	1	2	8	1	1	2	1	1	1	2.1	2.8	0.6
OG0001848		JAM1	2	1	1	3	1	2	6	4	2	2	2	2	2	1	1	2	2	1	1	2	2	1	3	2.1	1.8	-0.4
OG0001871		JAZ3,4,9	2	1	3	0	2	1	1	6	3	2	1	1	2	1	2	4	3	2	2	4	3	2	1	2.3	1.5	-0.8
OG0002013		NPF3.1	1	1	1	1	1	1	5	2	2	4	4	2	0	0	2	2	2	3	2	4	1	3	2	2.3	1	-1.3
OG0002236		CYP94B1	1	4	2	5	1	1	2	0	3	2	1	1	1	1	1	2	4	1	1	2	3	1	1	1.5	3	1.5
OG0002251		NPF2.7/NAXT	0	0	0	0	1	3	0	0	0	1	1	1	2	2	4	0	8	6	2	1	7	5	1	2.4	0	-2.4
OG0002270		MYC2	1	2	4	3	2	1	1	2	2	1	1	1	4	0	2	3	2	1	1	2	4	1	1	1.7	2.5	0.8
OG0002613		JAZ7	0	0	2	0	0	2	2	3	3	1	1	4	2	1	1	1	4	2	5	2	3	1	2	2.2	0.5	-1.7
OG0003233		OPR3	1	3	1	4	1	1	2	1	1	1	1	1	1	1	3	1	1	1	1	3	1	2	1	1.3	2.3	0.9
OG0003391		NPF5.7	1	1	2	1	1	0	0	3	3	1	1	1	0	2	4	1	3	2	1	3	2	2	1	1.7	1.3	-0.4
OG0003582		JAZ11	4	2	3	1	3	2	2	0	2	1	1	1	2	1	0	0	1	1	1	2	2	2	1	1.2	2.5	1.3
OG0004210		NINJA	1	1	1	6	1	1	1	1	2	1	1	1	2	2	1	1	1	1	1	2	1	1	1	1.2	2.3	1
OG0004293		JASSY	1	1	1	2	1	1	1	1	1	1	1	1	1	1	1	1	1	1	1	1	9	1	1	1.4	1.3	-0.2
OG0004420		JAZ10	3	2	2	1	3	3	0	2	2	1	1	1	3	0	1	0	0	0	1	2	1	1	1	1.1	2	0.9
OG0004530		COS1	1	1	1	1	1	1	1	1	1	1	2	1	1	2	2	1	2	5	1	2	1	1	1	1.5	1	-0.5
OG0004860		CTS	2	2	1	1	1	1	1	1	2	2	2	1	4	1	1	1	1	1	0	2	1	1	1	1.3	1.5	0.2
OG0009426		GH3.10	1	1	1	1	1	1	1	1	1	0	0	1	2	1	0	0	3	1	1	2	1	1	1	1	1	0
OG0011832		NPF5.1	0	0	0	0	0	0	0	2	1	1	1	1	0	1	1	0	1	1	1	1	1	1	1	0.8	0	-0.8
OG0014068		NPF4.1	0	1	0	0	0	0	0	0	0	0	0	0	0	1	1	0	0	0	0	1	2	1	1	0.4	0.3	-0.1
ethylene	OG0000276	EIN3/EIL2	2	4	4	4	5	3	5	6	4	7	6	4	2	6	4	0	9	4	3	7	6	3	2	4.5	3.5	-1
	OG0000281	ENAP1	5	5	3	3	5	4	5	7	4	4	4	2	8	3	4	5	5	4	2	7	5	3	3	4.4	4	-0.4
	OG0000296	LTH1.2	4	3	6	3	4	1	1	15	5	3	5	4	2	2	2	4	4	4	8	5	7	4	1	4.3	4	-0.3
	OG0000357	SAMI/MAT1,2,3,4	4	3	4	2	3	3	2	6	7	5	3	4	6	2	2	8	4	3	4	6	4	4	2	4.2	3.3	-0.9
	OG0000744	ETR2, ERS2, EIN4	1	3	2	0	2	3	4	3	3	4	4	2	4	4	2	3	8	3	3	4	3	2	1	3.4	1.5	-1.9
	OG0001476	JAR1	2	4	3	2	3	3	1	3	2	2	2	2	3	2	1	2	8	1	1	2	1	1	1	2.1	2.8	0.6
	OG0001646	ERF1,2	0	2	3	0	3	3	3	3	3	2	2	2	2	2	2	3	4	2	2	4	2	2	1	2.4	1.3	-1.2
	OG0001697	ARD1,2,3,4	2	1	2	1	2	2	2	5	1	3	3	2	2	2	2	2	2	2	2	2	4	2	2	2.3	1.5	-0.8
	OG0002343	Type-1 ACS1,2,6	0	1	1	0	1	1	1	2	3	3	2	1	0	1	2	1	5	6	2	4	3	2	2	2.3	0.5	-1.8
	OG0002836	Type-2 ACS4,5,8,9,11	0	1	1	0	3	1	1	3	3	1	1	2	2	1	1	1	3	2	3	3	5	2	1	2	0.5	-1.5
	OG0002976	ETR1, ERS1	0	1	1	0	2	1	1	2	3	2	3	3	3	1	2	1	3	1	2	3	2	2	1	2	0.5	-1.5
	OG0003168	EIN2	0	1	1	0	1	1	0	3	2	4	3	2	3	4	1	1	3	1	2	2	1	1	1	1.9	0.5	-1.4
	OG0003464	Type-1 ACS ACS1,2,6	0	0	0	0	0	0	0	5	4	1	1	1	2	1	2	1	5	3	2	3	3	2	1	2.1	0	-2.1
	OG0003520	ACS10,12	2	1	1	1	2	1	1	2	2	1	1	1	2	1	2	2	2	2	2	2	2	2	1	1.6	1.3	-0.4
	OG0003634	ETO1, EOL1	1	1	2	1	1	2	0	1	4	1	1	1	1	0	1	2	2	2	2	4	2	2	1	1.6	1.3	-0.4
	OG0005343	MTN1.2	1	1	1	1	1	1	1	2	2	1	1	1	1	1	1	2	1	1	1	2	2	1	2	1.3	1	-0.3
	OG0005438	MTK	1	1	1	1	1	1	0	2	1	2	1	1	2	1	1	1	1	1	2	2	1	2	2	1.3	1	-0.3
	OG0005504	ETO1-like2 (EOL2)	1	1	1	1	1	1	1	2	1	2	2	2	2	1	2	1	1	1	1	2	1	1	1	1.3	1	-0.3
	OG0005606	RAN1	2	1	1	1	1	1	1	2	2	2	2	1	1	1	1	1	1	1	1	2	1	1	1	1.3	1.3	0
	OG0005645	CTR1 (Ref1)	0	1	1	0	1	1	1	1	2	2	2	1	1	1	1	0	3	1	2	4	1	2	1	1.5	0.5	-

Orthogroup	Gene name	Seagrasses				Freshwater species			Mangrove		Moconots					Eudicots							ATR	average non seagrasses	average in seagrasses	enrichment in seagrasses			
		CN	PO	TT	ZM	PA	SP	WA	AM	RA	OS	BD	AC	EG	AO	BV	UG	SL	CC	VV	PT	AT					TC		
OG0011664	WOX4	0	0	0	0	0	0	0	3	2	1	1	0	1	0	1	0	1	0	1	1	1	2	1	1	1	0.9	0	-0.9
OG0000863	PFA4/6	1	3	1	1	2	2	1	8	4	3	3	3	4	3	2	3	4	2	2	4	4	2	2	2	3.1	1.5	-1.6	
OG0001432	PFA2/3	2	2	3	1	3	1	0	5	4	3	2	4	4	2	1	1	3	2	2	3	2	2	1	2.3	2	-0.3		
OG0002048	PFB1/2	0	1	2	0	1	1	1	4	4	2	3	2	3	2	2	1	3	2	3	4	3	2	1	2.4	0.8	-1.6		
OG0004244	LRL1/2	2	2	1	2	1	1	0	3	2	2	2	0	2	1	1	1	2	1	1	2	2	1	1	1.4	1.8	0.4		
OG0010761	PFA5	1	1	1	0	1	0	0	3	1	1	1	1	2	0	0	0	1	1	1	2	1	1	1	0.9	0.8	-0.2		
OG0011216	PXY	1	1	1	0	1	1	0	0	1	1	1	0	0	1	1	0	2	1	1	2	1	1	1	0.8	0.8	-0.1		
OG0008868	ARF5/MP	2	1	1	0	1	1	0	3	1	1	1	1	1	1	1	1	1	1	1	2	1	1	1	1.1	1	-0.1		
OG0000009	PEAR	15	13	19	13	22	18	8	35	16	14	16	12	21	2	11	29	20	16	11	18	22	13	12	16.3	15	-1.3		
OG0000050	LOG3/4	8	10	7	6	11	7	6	19	13	11	9	8	2	10	8	0	9	11	11	17	9	9	7	9.2	7.8	-1.5		
OG0000101	ERF109	8	5	8	6	8	6	11	4	0	10	7	6	10	3	7	10	12	4	6	10	8	7	5	7	6.8	-0.3		
OG0000147	AHK (A-tvse)	4	4	7	4	8	4	5	13	5	8	7	5	2	7	7	0	7	4	10	10	11	5	4	6.3	4.8	-1.6		
OG0000465	ERF1	3	3	2	2	4	2	7	2	2	4	4	3	3	2	2	3	7	6	2	8	3	5	1	3.7	2.5	-1.2		
OG0000521	APL1	3	3	5	3	5	3	3	2	2	4	3	4	2	4	2	2	3	3	4	6	4	4	2	3.2	3.5	0.3		
OG0000619	LBD3/4	1	2	2	2	3	1	0	3	5	4	2	4	6	3	3	1	5	3	5	8	3	4	2	3.4	1.8	-1.7		
OG0000679	SVP	6	5	2	1	2	4	2	5	2	3	4	3	1	1	4	0	3	3	5	8	2	3	1	3	3.5	0.5		
OG0000743	CVP2	2	1	3	3	2	3	2	6	4	5	5	3	3	2	2	3	3	2	2	4	3	2	1	3.1	2.3	-0.8		
OG0000789	PHV, PHB, REV	2	2	2	1	3	3	2	6	4	4	3	3	3	3	1	4	3	3	3	4	3	2	2	3.1	1.8	-1.4		
OG0000913	PSK1-6	3	3	3	1	4	1	1	5	2	3	2	4	0	2	2	3	4	3	3	5	5	3	1	2.7	2.5	-0.2		
OG0001299	NEN4	2	2	2	2	2	2	1	3	3	3	2	3	3	3	2	2	3	2	2	3	4	2	1	2.4	2	-0.4		
OG0001663	SACL1/2	2	2	2	0	3	1	0	5	4	0	1	0	2	2	3	2	4	2	0	9	3	2	2	2.3	1.5	-0.8		
OG0001698	ERF018	1	1	1	0	2	1	0	4	3	7	3	1	2	0	2	2	3	2	2	6	3	3	2	2.6	0.8	-1.8		
OG0001785	SHR	2	2	2	1	2	3	1	4	3	2	1	2	4	1	2	3	2	2	2	3	1	2	2	2.2	1.8	-0.5		
OG0001893	LBD1/11	2	1	1	0	2	1	0	1	3	1	2	1	4	1	2	5	4	4	7	2	2	2	1	2.4	1	-1.4		
OG0002017	PSKR1/2	2	2	2	2	2	2	1	1	3	3	3	3	0	3	1	0	2	3	1	4	2	2	2	2	2	2	0	
OG0002065	BES1/BZR1	1	1	2	1	1	3	1	4	3	1	1	0	2	1	1	5	3	2	2	4	4	2	1	2.2	1.3	-1		
OG0002445	WOX10/13	2	4	2	1	2	2	0	2	2	1	2	1	2	2	1	1	1	2	3	3	3	2	1	1.7	2.3	0.5		
OG0003527	LHW	1	1	1	1	0	1	1	4	2	4	1	1	2	3	1	3	2	1	1	2	1	1	1	1.8	1	-0.8		
OG0003906	KNAT1	2	1	1	1	1	1	1	2	2	4	2	2	4	1	1	1	1	1	1	1	1	1	1	1.6	1.3	-0.3		
OG0004118	TMOS/TSL1	2	1	1	1	1	1	1	3	2	1	2	2	2	1	1	1	2	1	1	2	2	1	1	1.5	1.3	-0.3		
OG0004211	ATHB8	1	1	0	1	1	0	0	2	3	1	1	1	1	2	2	1	3	1	2	4	2	2	1	1.6	0.8	-0.9		
OG0004259	LHW-like1	1	1	1	2	2	1	1	1	2	1	1	1	2	6	1	0	1	1	1	2	1	1	1	1.4	1.3	-0.1		
OG0005806	TSL2,3	1	1	1	1	2	2	1	2	1	1	1	1	2	1	1	0	1	1	1	2	2	1	1	1.2	1	-0.2		
OG0006199	SACL3	1	1	1	1	2	1	1	3	1	3	2	2	3	0	0	1	1	1	0	1	1	1	0	1.2	1	-0.2		
OG0006692	PSK3	0	0	1	0	0	1	0	2	3	2	0	2	0	1	2	0	4	2	2	2	1	2	1	1.5	0.3	-1.3		
OG0010611	CLE45	1	1	0	0	0	1	0	4	2	1	0	2	0	2	0	2	1	1	0	2	1	1	0	1.1	0.5	-0.6		
OG0011216	PXY	1	1	1	0	1	1	0	0	1	1	1	0	0	1	1	0	2	1	1	2	1	1	1	0.8	0.8	-0.1		
OG0012266	AHP6	0	0	0	0	0	0	0	2	2	0	0	1	0	0	1	0	1	1	1	2	1	1	1	0.8	0	-0.8		
OG0012813	LHW-like2,3	0	0	0	0	0	0	0	2	1	0	0	0	0	0	1	0	1	1	1	2	2	1	0	0.7	0	-0.7		
OG0023514	CLE41,44-TDIF	0	0	0	0	0	0	0	0	0	0	0	0	0	0	0	0	0	0	0	0	0	2	0	0	0.1	0	-0.1	

Orthogroup	Gene name	Seagrasses				Freshwater species			Mangrove		Moconots					Eudicots							ATR	average non seagrasses	average in seagrasses	enrichment in seagrasses		
		CN	PO	TT	ZM	PA	SP	WA	AM	RA	OS	BD	AC	EG	AO	BV	UG	SL	CC	VV	PT	AT					TC	
OG0000443	PAL	2	2	2	2	2	2	3	4	3	8	8	5	3	4	1	3	10	4	1	5	4	3	2	4.1	2	-2.1	
OG0000764	C4H	5	5	5	3	3	3	1	4	3	4	3	4	0	1	2	3	1	3	3	3	1	3	2	2.4	4.5	2.1	
OG0000371	ACL	3	4	3	6	3	4	2	9	5	5	5	2	4	2	2	2	5	2	3	5	4	3	2	3.7	4	0.3	
OG0000655	HCT	1	1	1	2	1	5	1	0	11	2	2	3	1	1	6	4	2	2	2	6	2	12	2	3.6	1.3	-2.3	
OG0000651	CCoAOMT	2	4	3	2	2	0	3	4	3	3	5	5	4	1	2	2	8	2	5	3	2	4	2	3.2	2.8	-0.5	
OG0001245	COMT	3	1	4	1	3	5	2	3	3	1	4	1	2	4	3	2	1	1	4	3	1	3	1	2.4	2.3	-0.2	
OG0001242	FSH	2	1	2	2	2	1	12	2	3	3	3	2	0	1	2	3	1	2	3	3	2	2	1	2.6	1.8	-0.8	
OG0001314	CCR	1	1	4	1	1	1	1	1	2	2	2	1	1	4	2	0	2	12	5	2	7	1	1	2.6	1.8	-0.9	
OG0005436	CAD	1	1	1	1	1	1	1	2	2	1	1	1	1	1	1	1	1	1	3	1	2	2	1	1.3	1	-0.3	
OG0001038	PER	1	1	2	1	6	1	3	0	2	4	3	3	0	3	3	0	4	4	3	10	4	1	1	2.7	1.3	-1.5	
OG0001082	PER	2	1	0	8	1	2	1	1	1	7	9	2	0	1	1	0	10	2	0	3	3	1	1	2.5	2.8	0.3	
OG0002652	PER	1	2	0	1	1	0	0	2	2	1	1	1	0	1	4	0	6	4	5	3	2	3	2	2.1	1	-1.1	
OG0000015	LAC	6	6	3	3	9	7	3	1	14	25	18	16	21	12	14	1	24	22	34	44	15	23	11	16.9	4.5	-12.4	
OG0014186	LAC	0	0	0	0	0	0	0	0	0	0	0	0	0	0	0	0	0	1	1	4	1	1	0	0.4	0	-0.4	
OG0012253	LAC	0	0	0	0	0	0	0	0	1	0	0	1	2	2	1	0	1	1	1	1	1	1	1	1	0.8	0	-0.8

Orthogroup	Gene name	Seagrasses				Freshwater species			Mangrove		Moconots					Eudicots							ATR	average non seagrasses	average in seagrasses	enrichment in seagrasses			
		CN	PO	TT	ZM	PA	SP	WA	AM	RA	OS	BD	AC	EG	AO	BV	UG	SL	CC	VV	PT	AT					TC		
Resistance (NRL) genes	Muti OGs	CC-NBS (CN)	2	0	0	0	2	3	0	0	0	72	37	7	41	3	26	0	35	0	26	19	7	46	15	17	0.5	-16.5	
	Muti OGs	CC-NBS-LRR (CNL)	59	58	27	21	71	30	0	83	66	42	55	39	143	29	32	11	123	460	200	119	43	82	14	86	41	-45	
	Muti OGs	NBS-LRR (NL)	26	37	27	23	40	41	1	18	9	118	6	109	59	9	47	18	48	93	12	71	11	104	40	44	28	-16	
	Muti OGs	NBS (N)	0	0	0	0	2	11	0	0	0	260	15	17	17	4	0	0	57	0	n/a	n/a	0	53	39	28	0	-28	
	Muti OGs	TIR-NBS (TN)	0	0	0	0	0	4	0	0	0	1	0	5	0	0	0	0	9	0	14	32	15	4	4	4.6	0	-4.6	
	Muti OGs	TIR-NBS-LRR (TNL)	0	0	0	0	0	0	0	2	6	0	0	0	0	0	1	0	21	8	90	91	83	8	14	17	0	-17	
		TOTAL	87	95	54	44	115	89	1	103	81	493	113	177	260	45	106	29	293	561	342	332	159	297	126	196	70	-126	
Heat shock factots (HSF)	Class A	A1	2	1	2	1	5	2	2	3	2	1	2	5	7	2	3	1	4	0	0	5	6	3	2	2.89	1.5	-1.39	
		A2	1	2	1	3	4	2	1	3	1	7	9	2	5	2	1	2	1	2	1	3	1	4	1	2.74	1.75	-0.99	
		A3	0	0	0	0	0	0	0	0	4	1	2	1	1	2	2	1	2	1	1	1	1	1	1	1	1.21	0	-1.21
		A4	1	1	1	1	1	2	1	1	1	3	2	6	1	2	2	1	4	3	1	1	3	2	2	0	2.00	1	-1.00
		A5	1	1	1	1	1	1	1	1	0	3	1	1	1	5	1	1	3	1	1	2	2	1	1	1	1.47	1	-0.47
	Class B	A6	1	1	1	1	2	1	1	5	2	3	5	2	1	2	1	0	3	2	3	7	2	9	1	2.74	1	-1.74	
		A7	0	0	0	0	0	0	0	0	0	3	2	1	0	1	0	0	0	0	0	0	0	2	0	0	0.47	0	-0.47
		A8	0	0	0	0	0	0	0	0	2	1	3	1	0	0	0	1	1	1	1	5	1	1	0	0.95	0	-0.95	
		A9	0	0	0	0	0	0	0	0	2	0	0	0	0	0	0	1	2	3	3	1	1	2	1	0	0.84	0	-0.84
		B1	1	1	1	0	1	1	0	2	1	1	1	3	2	0	1	1	1	1	1	1	2	1	1	1	1.16	0.75	-0.41
		B2	2	2	2	2	2	2	1	4	3	5	3	4	4	1	3	4	2	1	2	7	2	1	1	1	2.74	2	-0.74
		B3	0	0	0	0	0	0	0	2	2	0	0	0	0	0	1	0	2	1	1	2	1	1	0	0	0.68	0	-0.68
		B4	3	2	4	2	4	2	3	5	2	4	5	3	3	3	2	1	2	1	2	5	1	2	2	2	2.74	2.75	0.01
		B5	0	0	0	0	0	0	0	1	0	0	0	0	0	0	0	0	1	1	1	1	2	0	1	1	0.42	0	-0.42
Class C	C1	0	0	0	0	0	0	0	3	2	3	3	1	2	1	0	0	1	1	1	2	1	1	0	0	1.16	0	-1.16	
	C2	0	0	0	0	0	0	0	0	0	2	3	1	2	1	0	0	0	0	0	0	0	0	0	0	0.47	0	-0.47	
	TOTAL	12	11	13	11	20	13	10	37	23	37	42	25	35	18	16	21	26	17	18	47	24	29	11	24.68	11.75	-12.98		

Orthogroup	Gene name	Seagrasses				Freshwater species			Mangrove		Moconots						Eudicots							ATR	average non seagrasses	average in seagrasses	enrichment in seagrasses
		CN	PO	TT	ZM	PA	SP	WA	AM	RA	OS	BD	AC	EG	AO	BV	UG	SL	CC	VV	PT	AT	TC				
OG0000079	<i>CHS</i>	4	32	31	12	9	1	1	5	4	7	2	1	14	3	8	1	4	2	13	9	1	5	3	4.7	19.8	15.1
OG0005602	<i>CHI</i>	1	1	2	1	1	1	1	1	1	1	1	1	1	1	2	1	2	1	1	1	2	1	3	1.3	1.3	0
OG0001878	<i>F3H</i>	1	3	3	7	2	1	3	1	2	1	1	1	0	1	4	1	1	1	2	2	1	2	4	1.6	3.5	1.9
OG0000110	<i>F3'H</i>	5	7	14	3	2	7	8	6	10	10	11	6	0	4	2	1	9	24	7	11	1	4	4	6.9	7.3	0.4
OG0000578	<i>FNS</i>	1	2	1	2	3	2	1	10	2	4	3	3	1	4	3	0	2	2	5	14	3	3	2	3.6	1.5	-2.1
OG0003398	<i>FLS</i>	1	3	0	0	1	0	0	3	3	1	1	1	0	1	2	1	1	1	3	4	5	3	2	1.8	1	-0.8
OG0002592	<i>DFR</i>	1	1	6	2	1	2	1	0	3	2	1	1	1	1	1	0	1	1	4	2	1	3	4	1.6	2.5	0.9
Multi-OGs	<i>GT1</i>	46	76	74	56	94	73	42	146	92	227	177	73	137	83	103	78	184	239	126	215	121	168	143	132.7	63	-69.7
Multi-OGs	<i>GH1</i>	6	7	7	5	7	8	7	17	24	27	26	16	15	20	11	9	18	32	21	42	38	24	21	20.2	6.25	-13.95
OG0000016	<i>SOT12</i>	13	6	18	7	2	0	0	18	14	31	19	1	13	3	34	0	26	25	17	28	17	25	7	2 in freshwater species	11	9
OG0000669	<i>RT</i>	1	2	2	2	4	2	0	2	4	10	6	4	6	1	2	1	2	4	3	2	4	5	1	3.3	1.8	-1.5

	Orthogroup	Gene name	Seagrasses				Freshwater species			Mangrove		Icoconots					Eudicots							ATR	average non seagrasses	average in seagrasses	enrichment in seagrasses	
			CN	PO	TT	ZM	PA	SP	WA	AM	RA	OS	BD	AC	EG	AO	BV	UG	SL	CC	VV	PT	AT					TC
Na ⁺ /H ⁺ antiporters	OG0000616	NH-K1/2/4	4	2	2	3	2	2	3	5	5	3	3	3	3	1	2	3	4	4	5	3	4	2	3.2	2.8	-0.5	
	OG0002900	NH-K5/6	2	2	1	1	1	1	1	1	2	2	2	4	2	4	1	1	1	2	2	1	2	1	2	1.8	1.5	-0.3
	OG0011282	NH-B3	0	0	0	0	1	1	1	1	1	1	1	1	1	1	1	1	1	1	1	0	1	1	2	1	0	-1
	OG0005894	SOS1	2	1	1	1	1	1	1	1	2	1	1	1	1	1	1	2	1	1	1	2	2	1	1	1.2	1.3	0
		Total NH-Ks	8	5	4	5	5	5	6	8	10	7	7	9	7	9	4	6	6	8	8	8	8	7	7	7.1	5.5	-1.6
	OG0001686	SOS3	0	1	1	2	5	1	1	1	3	4	1	2	2	2	2	4	5	2	2	3	2	2	1	2.2	1	-1.2
OG0009717	SOS2	1	1	1	1	1	1	1	2	1	1	1	1	0	0	1	1	1	1	1	2	1	1	1	1	1	0	
H ⁺ -PPases	OG0000466	AVP1	3	4	5	5	4	2	1	4	3	6	4	5	5	3	2	1	5	3	3	4	1	3	2	3.2	4.25	1.05
	OG0017048	AVP1-like	0	3	0	0	1	0	0	0	0	0	0	0	1	0	0	0	0	0	0	0	0	0	0	0.1	0.8	0.7
	OG0022475	AVP1-like	0	0	0	1	0	0	0	0	0	0	0	0	0	0	0	1	0	0	0	0	0	0	0	0.1	0.3	0.2
	OG0026704	AVP1-like	0	0	1	0	0	0	0	0	0	0	0	0	1	0	0	0	0	0	0	0	0	0	0	0.1	0.3	0.2
	OG0028988	AVP1-like	0	0	0	1	0	0	0	0	0	0	0	0	0	0	0	0	0	0	0	0	0	0	0	0	0.3	0.3
CYCLIC NUCLEOTIDE GATED CATION CHANNELS	OG0000274	CNGC14/15/16/17	4	4	2	2	5	4	2	7	5	5	6	4	7	2	7	0	6	6	6	5	5	6	2	4.7	3	-1.7
	OG0001012	CNGC2/4	2	1	3	0	2	4	0	4	5	3	3	2	6	4	2	1	3	3	2	3	2	3	3	2.9	1.5	-1.4
	OG0001185	CNGC13/10/12/13	1	1	1	1	2	1	2	5	2	1	3	2	3	1	7	0	5	2	2	4	6	2	2	2.8	1	-1.8
	OG0001985	CNGC5/6/7/9	1	1	2	2	2	1	1	3	3	3	2	2	2	1	2	0	3	2	2	3	5	2	1	2.1	1.5	-0.6
	OG0003668	CNGC19/20	0	1	0	1	4	4	0	4	1	2	2	1	1	1	1	0	1	2	2	3	2	1	1	1.6	0.5	-1.1
	OG0013989	CNGC20-like	0	0	0	0	1	0	8	0	0	0	0	0	0	0	0	0	0	0	0	0	0	0	0	0.4	0	-0.4
	OG0015248	CNGC14-like	0	0	1	0	1	0	0	0	0	0	0	0	0	1	0	0	0	1	0	0	0	0	1	0.2	0.3	0.1
	OG0015675	CNGC14-like	0	0	1	0	0	0	0	0	0	0	0	0	0	0	3	0	1	0	1	0	0	0	0	0.3	0.3	0
	OG0021657	CNGC1-like	0	0	0	0	0	0	0	0	0	2	0	0	0	0	0	0	1	0	0	0	0	0	0	0.2	0	-0.2
	OG0028477	CNGC14-like	0	0	0	1	0	0	0	0	0	0	0	0	0	0	0	0	0	0	0	0	0	0	0	0	0.3	0.3
	OG0030129	CNGC17-like	0	0	0	1	0	0	0	0	0	0	0	0	0	0	0	0	0	0	0	0	0	0	0	0	0.3	0.3
	CNGCs in total	8	8	10	8	17	14	13	23	16	16	16	11	19	10	22	1	20	16	15	18	20	14	10	15.3	8.5	-6.8	
K ⁺ channels and transporters	OG0007504	KAT1/2	0	0	0	0	0	0	0	1	1	3	3	2	2	3	2	0	2	1	1	1	2	1	1	1.4	0	-1.4
	OG0001794	GORK	1	1	1	1	1	1	1	3	2	2	3	2	2	4	2	3	3	2	5	3	2	2	2	2.4	1	-1.4
	OG0027252	KOR1-like	0	2	0	0	0	0	0	0	0	0	0	0	0	0	0	0	0	0	0	0	0	0	0	0	0.5	0.5
	OG0001335	AKT1/6	2	2	6	2	1	2	1	5	2	2	2	1	2	3	3	1	2	3	2	4	3	2	1	2.3	3	0.7
	OG0022411	AKT1-like	0	0	1	1	0	0	0	0	0	0	0	0	0	0	0	0	0	0	0	0	0	0	0	0	0.5	0.5
	OG0029548	AKT1-like	0	0	0	1	0	0	0	0	0	0	0	0	0	0	0	0	0	0	0	0	0	0	0	0	0.3	0.3
	OG0008929	AKT2/3	1	1	0	2	1	1	1	1	1	1	1	1	2	1	1	0	2	1	1	1	1	1	1	1.1	1	-0.1
	OG0019063	AKT2/3-like	0	0	1	1	1	0	0	0	0	0	0	0	0	0	0	0	1	0	0	0	0	0	0	0.1	0.5	0.4
	OG0008967	KAT3	1	1	1	1	1	1	1	1	1	3	1	1	0	0	0	1	2	1	1	3	1	1	0	1.1	1	-0.1
	OG0010757	HAK5	0	0	0	0	3	1	1	0	0	1	2	1	0	1	0	0	2	2	1	3	1	1	1	1	0	-1
	OG0017639	HAK5-like	0	0	0	0	1	0	0	0	0	0	0	2	0	0	0	0	0	1	0	0	0	0	0	0.2	0	-0.2
	OG0009315	HAK5-like	0	1	0	0	2	0	0	2	2	0	0	0	3	0	8	0	0	1	1	0	0	0	4	1.2	0.3	-0.9
	OG0027392	HAK5-like	0	0	0	0	1	0	0	0	0	0	0	0	0	0	0	0	0	0	1	0	0	0	0	0.1	0	-0.1
OG0000055	KUP/HAK	4	4	5	7	6	8	5	9	13	17	17	12	1	10	8	1	13	8	10	13	7	10	13	9.7	5	-4.7	
OG0000529	KUP/HAK	3	3	2	4	4	2	2	9	5	5	5	2	0	2	3	1	3	3	3	4	3	3	3	3.2	3	-0.2	
OG0003652	KUP/HAK	2	1	2	1	1	1	0	0	2	3	3	1	0	1	2	0	3	1	2	3	2	2	2	1.6	1.5	-0.1	
OG0014464	KUP/HAK	0	1	3	0	0	0	1	0	0	0	0	0	0	0	0	1	1	0	1	0	0	0	0	0.2	1	0.8	
Cl ⁻ transporter/channel	OG0000508	CLC-C/G	4	5	2	3	4	2	2	2	4	5	5	4	4	6	3	2	3	2	3	6	2	2	2	3.3	3.5	0.2
	OG0004143	CLC-F	2	2	2	2	2	1	1	1	1	2	2	2	2	1	0	1	2	1	1	1	1	1	1	1.2	2	0.8
	OG0008344	CLC-D	1	1	1	1	1	1	1	1	1	1	1	1	1	1	1	1	1	1	1	1	1	1	1	1.1	1	-0.1
	OG0011016	CLC-A/B	0	0	0	0	0	1	1	2	0	1	1	1	1	1	2	0	2	1	1	1	2	1	1	1.1	0	-1.1
	OG0011443	CLC-E	0	0	0	0	1	1	1	0	1	1	1	1	1	1	1	1	1	1	1	1	1	1	1	0.9	0	-0.9
	OG0002251	NPF2.7/NA XT	0	0	0	0	1	3	0	0	0	1	1	1	2	2	4	0	8	6	2	1	7	5	1	2.4	0	-2.4
	OG0009029	ALMT12/Q UAC1	0	0	0	0	0	0	0	1	2	1	1	1	1	5	1	1	2	1	1	1	3	1	1	1.3	0	-1.3

	Orthogroup	Gene name	Seagrasses				Freshwater species			Mangrove		Moconots					Eudicots							ATR	average non seagrasses	average in seagrasses	enrichment in seagrasses		
			CN	PO	TT	ZM	PA	SP	WA	AM	RA	OS	BD	AC	EG	AO	BV	UG	SL	CC	VV	PT	AT					TC	
PCO genes	OG0001645	PCO1,2	2	2	4	2	3	2	1	4	2	2	2	3	4	2	1	1	3	2	2	2	2	1	1	2.1	2.5	0.4	
	OG0004744	PCO4	0	2	0	0	1	1	0	2	2	2	1	2	3	1	1	2	2	1	2	2	2	2	1	1.6	0.5	-1.1	
	OG0008626	PCO3	1	1	1	1	1	1	0	0	1	3	1	1	1	1	1	1	1	1	1	2	1	1	1	1.1	1	-0.1	
	OG0009770	PCO-like	1	3	2	0	1	1	1	1	1	1	1	1	1	1	1	2	0	1	1	2	0	1	0	0.9	1.5	0.6	
	OG0011709	PCO-like	1	3	2	1	1	0	0	0	1	1	0	2	2	0	0	0	0	0	1	0	0	1	0	0.4	1.8	1.3	
	OG0018699	PCO	1	0	0	1	1	0	0	0	0	0	0	0	0	0	0	0	0	0	0	0	0	0	0	0	0	0.5	0.5
	OG0028813	PCO-like	0	0	0	1	0	0	0	0	0	0	0	0	0	0	0	0	0	0	0	0	0	0	0	0	0	0.3	0.3
		PCO s in total	6	11	9	6	8	5	2	7	7	9	5	9	11	5	4	6	6	5	7	8	5	6	3	5.5	8	2.5	
ERF-VII genes	OG0000298	RAP2.3	7	4	10	7	10	6	5	3	2	4	2	1	5	0	2	4	2	2	2	4	3	4	3	3	3	7	4
	OG0001149	RAP2.2, RAP2.12	4	3	5	2	6	2	1	3	2	3	3	4	2	1	1	3	3	2	0	2	2	1	1	2	3.5	1.5	
	OG0021466	ERF	1	1	0	0	1	0	0	0	0	0	0	0	0	0	0	0	0	0	0	0	0	0	0	0	0.5	0.5	
	OG0021512		1	2	0	0	0	0	0	0	0	0	0	0	0	0	0	0	0	0	0	0	0	0	0	0	0.8	0.8	
	OG0026423		1	1	0	0	0	0	0	0	0	0	0	0	0	0	0	0	0	0	0	0	0	0	0	0	0.5	0.5	
	OG0029099		0	0	0	1	0	0	0	0	0	0	0	0	0	0	0	0	0	0	0	0	0	0	0	0	0.3	0.3	
	OG0001132	ZPR2, ZPR3	2	1	1	1	2	3	1	5	3	5	3	3	2	4	1	4	3	2	3	4	2	2	2	2	2.9	1.3	-1.6
OG0022570		0	0	0	2	0	0	0	0	0	0	0	0	0	0	0	0	0	0	0	0	0	0	0	0	0.5	0.5		
OG0030094		0	0	0	1	0	0	0	0	0	0	0	0	0	0	0	0	0	0	0	0	0	0	0	0	0.3	0.3		
		ERF-VII s in total	16	12	16	14	19	11	7	11	7	12	8	8	9	5	4	11	8	6	5	10	7	7	6	6	14.5	8.5	
LDH genes	OG0002170		3	1	5	3	2	1	2	1	2	2	1	2	1	1	2	2	2	2	3	1	1	1	1	1.6	3	1.4	
	OG0007502		1	1	1	1	1	1	1	1	1	1	1	1	2	1	1	2	1	1	1	1	1	1	1	1.1	1	-0.1	
	OG0017976	LDH	0	2	0	0	0	0	1	0	0	0	0	0	0	1	0	0	0	0	0	0	0	0	0	0	0.1	0.5	0.4
	OG0018984		0	1	2	0	0	0	0	0	0	0	0	0	0	0	0	0	0	0	0	0	0	0	0	0	0.8	0.8	
	OG0029967		0	0	0	1	0	0	0	0	0	0	0	0	0	0	0	0	0	0	0	0	0	0	0	0	0.3	0.3	
		LDHs in total	4	5	8	5	3	2	4	2	3	3	2	3	3	4	2	3	4	3	3	4	2	2	2	2.8	5.5	2.7	

	Orthogroup	Gene name	Seagrasses			Freshwater species			Mangrove	Moconots				Eudikots								ATR	average non-seagrass	average in seagrasses	enrichment in seagrasses			
			CN	PO	TT	ZM	PA	SP	WA	AM	RA	OS	BD	AC	EG	AO	BV	UG	SL	CC	WV					PT	AT	TC
Carbonic anhydrases (CA)	OG0000299	ACAS7	6	4	6	4	3	0	0	8	5	2	1	4	2	3	3	7	5	4	6	6	6	5	3.95	5	1.05	
	OG0000316	ACA1	1	1	3	0	2	1	9	2	1	4	4	2	2	2	2	1	1	1	2	1	1	1	2.11	1.25	-0.86	
	OG0013954	ACA	1	2	0	2	3	0	0	0	0	0	0	0	0	0	0	0	0	0	0	0	0	0	0.16	1.25	1.09	
	OG0014553	ACA	0	0	0	0	0	0	0	0	0	1	0	0	0	0	0	0	0	0	0	0	0	0	5	0.32	0	-0.32
	OG0019481	ACA	0	0	0	0	0	0	0	0	0	1	0	0	0	0	1	0	0	0	0	0	0	0	1	0.16	0	-0.16
	OG0028785	ACA8	0	0	0	1	0	0	0	0	0	0	0	0	0	0	0	0	0	0	0	0	0	0	0	0.00	0.25	0.25
		Alpha CA in total	8	7	9	7	8	1	9	10	6	11	6	3	6	4	6	4	8	6	5	8	7	7	12	6.68	7.75	1.07
	OG0001190	BCA1/2/3	2	2	2	1	4	1	0	4	2	1	2	2	3	1	2	5	3	2	4	5	4	4	1	2.63	1.75	-0.88
	OG0005111	BCA5	1	1	1	1	2	1	2	1	1	1	1	2	1	1	1	1	1	2	3	1	2	1	1	1.37	1	-0.37
		Beta CA in total	3	3	3	2	6	2	2	5	3	2	3	3	5	2	3	6	4	3	6	8	5	6	2	4.00	2.75	-1.25
OG0002131	GAMMACAI	1	1	1	3	1	2	2	2	2	3	2	2	2	2	1	1	3	2	2	3	3	2	1	2.00	1.5	-0.50	
OG0006442	GAMMACAI-like 1/2	2	2	1	1	1	1	1	1	1	1	1	2	1	1	1	1	1	0	2	2	1	1	1	1.11	1.5	0.39	
	Gamma CA in total	3	3	2	4	2	3	3	3	3	4	3	3	4	3	2	2	4	3	2	5	5	3	2	3.11	3	-0.11	
Boron/HCO ₃ ⁻ transporters and proton pumps	OG0001707	Boron transporter 4/5	2	1	1	1	1	1	3	4	2	2	2	1	2	4	3	1	2	1	3	5	4	3	1	2.37	1.25	-1.12
	OG0001954	Boron transporter 1/2	1	2	2	1	1	2	1	2	3	1	1	1	2	2	3	2	3	1	3	5	3	3	2	2.16	1.5	-0.66
	OG0012730	Boric acid channel	0	0	0	0	0	0	0	0	1	0	0	0	2	0	1	0	1	1	1	2	1	1	1	0.63	0	-0.63
	OG0004171	Boron/HCO ₃ ⁻ transporter family in total	3	4	6	4	3	5	6	8	7	4	4	3	8	7	9	5	7	5	8	14	9	8	5	6.58	4.25	-2.33
	OG0000088	ATPase 8/14/6	8	6	6	8	6	5	6	2	9	9	9	8	4	9	7	0	7	9	8	14	12	9	5	7.26	7	-0.26
	OG0010781	ATPase Calcium-transporting	1	0	0	0	0	0	0	10	0	0	0	2	4	0	0	1	1	0	0	0	0	0	2	1.05	0.25	-0.80
	OG0001162	ATPase 5/6 H ⁺ -ATPase (pm) in total	3	2	3	2	3	2	2	3	2	4	3	2	4	2	1	1	2	2	2	5	3	2	1	2.42	2.5	0.08
			12	8	9	10	9	7	8	15	11	13	12	12	12	11	8	2	10	11	10	19	15	11	8	10.74	9.75	-0.99
C4-photosynthesis pathways	OG0000943	PEPC2/3	2	2	1	4	3	2	1	2	3	5	5	2	4	2	2	2	4	2	2	3	3	2	1	2.63	2.25	-0.38
	OG0006429	PEPC	1	1	1	1	1	1	1	1	1	1	1	1	2	1	2	1	1	1	0	2	2	2	1	1.21	1	-0.21
	OG0007219	PEPC	1	1	1	1	1	1	1	2	1	2	2	1	1	1	1	1	1	1	1	1	1	1	1	1.16	1	-0.16
	OG0008463	PEPC4	1	1	1	1	1	1	1	1	1	1	1	1	1	1	1	1	1	1	1	2	1	1	1	1.05	1	-0.05
	OG0017899	PEPC2	0	0	1	0	0	0	0	0	0	0	0	0	1	0	1	0	1	0	0	0	0	0	0	0.16	0.25	0.09
	OG0008097	PEPC	1	1	4	0	1	4	2	2	0	1	0	0	1	0	4	0	0	0	0	1	2	1	1	1.05	1.5	0.45
	OG0001051	PEPC1/2	1	1	6	1	6	2	1	3	2	2	1	0	2	1	1	2	2	2	2	2	2	2	15	2.63	2.25	-0.38
	OG0008566	PEPC	1	1	1	2	1	1	1	0	1	1	1	1	3	3	1	0	0	0	1	1	0	1	1	0.95	1.25	0.30
	OG0001738	PEPC1/2	2	3	1	2	2	1	3	3	2	2	3	2	0	2	2	0	5	2	2	4	2	2	1	2.11	2	-0.11
	OG0003685	PPDK	1	1	1	2	1	1	1	5	1	2	1	1	1	2	1	3	1	1	2	1	1	2	1	1.53	1.25	-0.28
	OG0004857	PPDK regulatory protein	1	1	2	2	2	1	1	2	1	1	1	1	2	1	1	2	1	1	1	1	2	1	1	1.26	1.5	0.24
	OG0000557	NADP-dependent malic enzyme	3	3	3	3	3	2	1	6	5	4	4	2	3	4	3	2	5	3	3	5	4	3	1	3.32	3	-0.32
	OG0015507	NADP-dependent malic enzyme	0	0	2	0	0	0	0	0	0	1	0	0	0	1	0	0	0	0	1	0	0	0	0	0.16	0.5	0.34
	OG0005961	NAD-dependent malic enzyme	1	1	1	1	2	1	4	1	1	1	1	1	1	1	1	1	1	1	1	2	1	1	1	1.26	1	-0.26
	OG0008588	NAD-dependent malic enzyme	1	1	1	1	1	1	1	1	1	1	1	1	1	1	1	1	1	1	1	2	1	1	1	1.05	1	-0.05
	OG0007502	Malate dehydrogenase 1	1	1	1	1	1	1	1	1	1	1	1	1	1	2	1	1	2	1	1	1	1	1	1	1.11	1	-0.11
	OG0002210	ALAA1/2	3	1	2	4	4	1	1	0	1	5	4	1	0	2	1	2	3	1	1	2	2	1	0	1.68	2.5	0.82
OG0006199	GGT2	2	1	1	1	3	1	0	1	2	1	1	1	0	1	1	1	2	1	1	2	2	1	1	1.21	1.25	0.04	
OG0029713	AtAlaAT2	0	0	1	0	0	0	0	0	0	0	0	0	0	1	0	0	0	0	0	0	0	0	0	0.05	0.25	0.20	
OG0024911	GGT2	0	0	0	0	1	0	0	0	0	0	1	0	0	0	0	0	0	0	0	0	0	0	0	0.11	0	-0.11	
OG0002885	Asp4/3	2	1	1	2	1	1	1	2	2	1	1	1	1	2	2	2	2	2	2	3	3	2	1	1.68	1.5	-0.18	
OG0004376	ASPARTATE AMINOTRANSFERASE 1	1	1	1	2	1	1	1	2	2	2	2	1	1	0	1	2	1	1	2	2	1	2	1	1.37	1.25	-0.12	
OG0007063	Aspartate aminotransferase	1	1	1	1	1	1	1	1	1	1	1	1	1	2	1	2	1	1	1	2	1	1	1	1.16	1	-0.16	
	C4-metabolism in total	27	24	35	32	37	25	24	36	29	36	33	20	26	32	28	27	34	24	26	39	32	28	32	29.89	29.5	-0.39	
Rubisco activase	OG0005372	Rubisco activase	1	2	1	3	1	1	1	1	1	1	1	1	1	1	1	1	2	1	1	2	1	1	1	1.11	1.75	0.64
	OG0008417	Rubisco activase	1	1	1	1	1	1	1	0	1	1	1	1	1	2	1	0	1	1	1	2	1	2	1	1.05	1	-0.05
	OG0020352	Rubisco activase	0	1	0	0	0	0	0	0	0	0	0	0	0	1	0	1	0	0	0	0	0	0	0	0.11	0.25	0.14
	OG0002125	Rubisco activase	1	1	1	2	3	2	1	2	3	1	2	3	2	1	1	4	2	2	3	3	1	2	1	2.05	1.25	-0.80
	Rubisco activase in total	3	5	3	6	5	4	3	3	5	3	4	5	4	5	3	6	5	4	5	7	3	5	3	4.32	4.25	-0.07	

Orthogroup	Gene name	Seagrasses				Freshwater species			Mangrove	Moconots						Eudicots							ATR	average non seagrasses	average in seagrasses	enrichment in seagrasses		
		CN	PO	TT	ZM	PA	SP	WA	AM	RA	OS	BD	AC	EG	AO	BV	UG	SL	CC	WV	PT	AT					TC	
OG0000120	Nitrate/Nitrite Transporter (NRT)	5	6	4	4	3	4	4	8	5	14	12	7	2	8	6	6	15	5	6	5	7	6	6	10	7.2	4.8	-2.5
OG0000306		4	3	4	3	4	2	1	8	6	6	4	3	2	3	3	5	5	7	3	5	6	5	3	4	4.3	3.5	-0.8
OG0000367		3	3	2	3	2	7	1	1	3	12	10	3	1	6	2	3	4	4	6	3	3	3	3	4	4.2	2.8	-1.5
OG0000480		1	1	1	1	2	2	2	5	2	3	6	2	3	2	10	2	6	5	3	7	6	6	2	2	4.1	1	-3.1
OG0000886		0	0	0	0	0	0	0	4	0	1	1	0	0	1	6	1	17	12	3	11	2	4	1	1	3.6	0	-3.6
OG0000925		1	1	1	3	3	2	3	4	3	3	2	1	0	3	5	1	5	3	2	5	3	3	3	3	2.8	1.5	-1.3
OG0002990		2	1	1	1	2	1	0	4	2	2	2	2	1	2	1	1	2	2	2	3	2	2	1	1	1.8	1.3	-0.5
OG0003549		0	1	2	1	1	2	0	4	2	1	1	3	0	1	2	0	4	2	2	2	3	2	1	1	1.8	1	-0.8
OG0003600		1	1	1	1	1	1	2	2	1	2	2	1	1	2	1	1	1	2	1	3	2	1	4	1	1.7	1	-0.7
OG0008152		1	1	1	2	1	0	0	0	0	6	6	1	3	1	0	0	0	0	0	0	0	0	1	1	1	1.3	0.3
OG0010200		1	1	1	1	1	1	1	0	1	1	1	1	1	1	1	1	1	1	1	1	1	1	1	1	0.9	1	0.1
OG0013788		0	0	0	0	0	0	0	2	0	0	0	0	0	0	4	1	0	1	0	0	1	0	0	0	0.5	0	-0.5
OG0016342		0	0	0	1	1	0	0	0	0	0	0	1	0	1	0	0	0	0	0	0	0	0	0	0	0.1	0.3	0.1
OG0016485		0	1	1	0	0	0	0	0	2	0	0	0	0	1	0	0	0	0	0	0	0	0	0	0	0.2	0.5	0.3
OG0017868		0	0	0	0	0	1	0	0	0	0	0	0	0	1	0	0	0	0	1	0	1	0	0	0	0.2	0	-0.2
OG0023822	1	0	0	0	0	0	0	0	0	0	0	0	0	1	0	0	0	0	0	0	0	0	0	0	0.1	0.3	0.2	
	Total NRT	20	20	19	21	21	23	14	42	27	51	47	25	14	34	41	22	60	44	30	45	37	33	31	33.7	20	-13.7	
OG0000251	Amino acid Transporter	4	3	7	8	6	4	3	5	8	3	2	2	5	0	5	6	3	4	2	7	5	5	3	3	4	5.5	1.5
OG0000740		4	4	5	4	6	1	0	3	2	6	5	2	3	0	1	2	1	2	3	6	1	2	2	2	2.3	4.3	1.9
OG0002047		0	2	1	0	0	0	0	4	3	3	1	3	3	5	0	1	4	3	3	6	0	3	2	2	2.4	0.8	-1.7
OG0002121		0	1	1	0	1	4	1	6	2	2	2	2	2	2	1	0	3	2	3	4	3	2	2	2	2.4	0.5	-1.9
OG0006860		1	2	1	1	1	1	1	0	1	1	1	1	2	1	1	1	1	2	1	2	1	1	1	1	1.1	1.3	0.1
OG0014275		0	0	2	0	0	0	0	1	0	1	0	0	1	1	0	1	0	0	1	0	0	0	0	0	0.3	0.5	0.2
OG0022012		0	0	0	1	2	0	0	0	0	0	0	0	0	0	0	0	0	0	0	0	0	0	0	0	0	0.3	0.3
OG0027980		0	0	1	1	0	0	0	0	0	0	0	0	0	0	0	0	0	0	0	0	0	0	0	0	0	0.5	0.5
OG0008862	Urea transporter	1	1	1	1	1	1	1	1	1	1	1	1	1	2	1	1	1	1	1	1	1	1	1	1.1	1	-0.1	
OG0005068	Nitrate Reductase (NR)	1	1	1	1	7	1	2	0	1	1	1	1	2	1	1	1	1	1	1	1	1	1	1	1.1	1	-0.1	
OG0005078		1	1	1	1	1	1	7	1	1	1	1	2	1	1	1	1	1	1	1	1	1	1	1	1.4	1	-0.4	
OG0005129		1	0	1	1	1	1	1	2	1	3	2	2	1	1	1	1	1	2	1	2	2	1	1	1.4	0.8	-0.7	
OG0005957	Ferredoxin-Nitrite Reductase (FNIR)	1	1	1	1	1	2	1	2	1	1	1	1	2	2	1	1	1	1	1	2	1	1	1	1.3	1	-0.3	
OG0009014		1	1	1	1	1	1	1	1	1	1	1	1	1	0	1	1	2	1	1	1	1	1	1	1	1	0	
OG0001530	Glutamate Synthase (GOGAT)	1	1	1	1	16	11	1	1	1	1	1	1	2	2	1	1	1	1	1	2	2	1	1	1.8	1	-0.8	
OG0001582		3	3	2	2	2	2	2	1	2	2	2	2	2	2	2	3	2	2	2	4	3	1	2	2.1	2.5	0.4	
OG0003012		1	3	2	3	0	0	1	1	3	0	0	2	0	0	6	2	7	4	0	2	1	0	0	1.6	2.3	0.6	
OG0003672		2	2	2	2	2	1	1	2	2	2	2	1	2	1	1	1	1	1	1	2	1	1	1	1.3	2	0.7	
OG0003964		2	2	2	1	1	1	1	3	1	2	1	2	1	2	1	1	2	1	1	2	2	1	1	1.4	1.8	0.3	
OG0017196		0	0	0	1	4	0	0	0	0	0	0	0	0	0	0	0	0	0	0	0	0	0	0	0	0	0.3	0.3
OG0027329		0	0	0	1	1	0	0	0	0	0	0	0	0	0	0	0	0	0	0	0	0	0	0	0	0	0.3	0.3
OG0029155		0	0	0	1	0	0	0	0	0	0	0	0	0	0	0	0	0	0	0	0	0	0	0	0	0	0.3	0.3
OG0003672		2	2	2	2	2	1	1	2	2	2	2	1	2	1	1	1	1	1	1	2	1	1	1	1.3	2	0.7	
OG0000244		Glutamine Synthetase (GS)	3	2	3	8	4	4	2	5	5	4	4	6	7	4	2	5	5	3	5	8	6	4	4	4.6	4	-0.6
OG0018028	0		0	1	1	0	0	0	0	0	0	0	0	0	1	0	0	0	0	0	0	0	0	0	0.1	0.5	0.4	
OG0029514	0		0	0	1	0	0	0	0	0	0	0	0	0	0	0	0	0	0	0	0	0	0	0	0	0	0.3	0.3
OG0000842	Asparagine synthetase	2	3	4	3	3	2	4	3	2	2	3	4	4	3	3	1	2	2	1	3	3	2	2	2.6	3	0.4	
OG0007556		1	1	1	1	1	1	2	1	0	1	1	1	2	1	1	1	1	2	1	1	1	1	1	1.1	1	-0.1	
OG0001180	Glutamate Dehydrogenase (GDH)	1	2	3	2	2	3	1	3	5	2	2	2	2	2	1	3	4	2	3	4	3	2	2	2.6	2	-0.6	
OG0008777		1	1	1	1	1	1	1	1	1	1	1	1	2	1	1	1	1	1	1	1	1	1	1	1.1	1	-0.1	
OG0027340		0	0	0	1	1	0	0	0	0	0	0	0	0	0	0	0	0	0	0	0	0	0	0	0	0.3	0.3	
OG0028925		0	0	0	1	0	0	0	0	0	0	0	0	0	0	0	0	0	0	0	0	0	0	0	0	0	0.3	0.3
OG0029894		0	0	0	1	0	0	0	0	0	0	0	0	0	0	0	0	0	0	0	0	0	0	0	0	0	0.3	0.3
OG0030253		0	0	0	1	0	0	0	0	0	0	0	0	0	0	0	0	0	0	0	0	0	0	0	0	0	0.3	0.3

Supplementary Material

Refer to Web version on PubMed Central for supplementary material.

Acknowledgements

Y.VdP., J.L.O., T.B.H.R. and G.P. acknowledge funding from the US-Dept. of Energy, Joint Genome Institute, Berkeley, California, USA, under the Community Sequencing Program 2018, Project Number 504341 (Marine Angiosperm Genomes Initiative-MAGI). The CSP award also included support sequencing and plant bioinformatics from HudsonAlpha Institute for Biotechnology, Huntsville, AL; and DNA/RNA extraction and processing from

the Arizona Genomics Institute, Tuscon, AZ. Y.VdP. acknowledges funding from the European Research Council (ERC) under the European Union's Horizon 2020 research and innovation program (No. 833522) and from Ghent University (Methusalem funding, BOF.MET.2021.0005.01). P.N. acknowledges funding by the Deutsche Forschungsgemeinschaft (DFG, German Research Foundation) – project number 497665889, 1606/3-1 for research on *Potamogeton*. M.K. acknowledge funding through the Helmholtz School for Marine Data Science (MarDATA), Grant No. HIDSS-0005. The work of G.P., E.D., J.P., and M.R. was partially supported by the project Marine Hazard, PON03PE_00203_1 (MUR, Italian Ministry of University and Research) and by the National Biodiversity Future Centre (NBFC) Program, Italian Ministry of University and Research, PNRR, Missione 4 Componente 2 Investimento 1.4 (Project: CN00000033). M.D.D., L.L.W., M.P.T. and Y.Y.S. acknowledge funding from Universiti Malaysia Terengganu (SRG Vot55317). The work (proposal: 10.46936/10.25585/60001196) conducted by the U.S. Department of Energy Joint Genome Institute (<https://ror.org/04xm1d337>), a DOE Office of Science User Facility, is supported by the Office of Science of the U.S. Department of Energy operated under Contract No. DE-AC02-05CH11231. The work of A.B. was performed within the Papanin Institute for Biology of Inland Waters RAS state assignment (theme 121051100099-5).

Data availability

The DNA sequencing data for *C. nodosa* genome assembly has been deposited in the NCBI databases under the BioProject PRJNA1041560 via the link: <https://www.ncbi.nlm.nih.gov/bioproject/?term=PRJNA1041560> All assemblies and annotations for all seagrass species discussed in the current paper can be found at <https://bioinformatics.psb.ugent.be/gdb/seagrasses/>. Transcriptome data (including raw data and clean data) and sequencing QC Reports for *C. nodosa* can be found at https://genome.jgi.doe.gov/portal/pages/dynamicOrganismDownload.jsf?organism=Cymnodnscriptome_2; transcriptome data and sequencing QC Reports for *P. oceanica* can be found at https://genome.jgi.doe.gov/portal/pages/dynamicOrganismDownload.jsf?organism=Posocenscriptome_2; transcriptome data and sequencing QC Reports for *T. testudinum* can be found at https://genome.jgi.doe.gov/portal/pages/dynamicOrganismDownload.jsf?organism=Thatesnscriptome_4; transcriptome data for *Z. marina* is from Jeanine et al. (2016). For the public databases, RFAM database v14.7 can be downloaded at <https://ftp.ebi.ac.uk/pub/databases/Rfam/14.7/>; UniProt database can be accessed from the web at <http://www.uniprot.org> and downloaded from <http://www.uniprot.org/downloads>; NCBI nucleotide database can be accessed via <https://www.ncbi.nlm.nih.gov/>

References

- Green, EP, Short, FT. World Atlas of Seagrasses Prepared by the UNEP World Conservation Monitoring Centre. Berkeley, USA: Univ. of California Press; 2003. 48–58.
- Short F, Carruthers T, Dennison W, Waycott M. Global seagrass distribution and diversity: A bioregional model. *Journal of Experimental Marine Biology and Ecology*. 2007; 350: 3–20. DOI: 10.1016/j.jembe.2007.06.012
- Camacho C, et al. BLAST+: architecture and applications. *BMC Bioinformatics*. 2009; 10: 421. doi: 10.1186/1471-2105-10-421 [PubMed: 20003500]
- McKenzie LJ, et al. The global distribution of seagrass meadows. *Environmental Research Letters*. 2020; 15 074041 doi: 10.1088/1748-9326/ab7d06
- Duffy JE, et al. Toward a Coordinated Global Observing System for Seagrasses and Marine Macroalgae. *Frontiers in Marine Science*. 2019; 6
- Gallagher AJ, et al. Tiger sharks support the characterization of the world's largest seagrass ecosystem. *Nature Communications*. 2022; 13 6328 doi: 10.1038/s41467-022-33926-1
- Bertelli CM, Unsworth RKF. Protecting the hand that feeds us: Seagrass (*Zostera marina*) serves as commercial juvenile fish habitat. *Marine Pollution Bulletin*. 2014; 83: 425–429. DOI: 10.1016/j.marpolbul.2013.08.011 [PubMed: 23998854]

8. Nordlund L, Koch E, Barbier E, Creed J. Seagrass Ecosystem Services and Their Variability across Genera and Geographical Regions. *PLOS ONE*. 2016; 11 e0163091 doi: 10.1371/journal.pone.0163091 [PubMed: 27732600]
9. Unsworth RKF, Cullen-Unsworth LC, Jones BLH, Lilley RJ. The planetary role of seagrass conservation. *Science*. 2022; 377: 609–613. DOI: 10.1126/science.abq6923 [PubMed: 35926055]
10. Waycott M, et al. Accelerating loss of seagrasses across the globe threatens coastal ecosystems. *Proc Natl Acad Sci U S A*. 2009; 106: 12377–12381. DOI: 10.1073/pnas.0905620106 [PubMed: 19587236]
11. Reusch TBH, et al. Lower *Vibrio* spp. abundances in *Zostera marina* leaf canopies suggest a novel ecosystem function for temperate seagrass beds. *Marine Biology*. 2021; 168: 149. doi: 10.1007/s00227-021-03963-3
12. Sievers M, et al. The Role of Vegetated Coastal Wetlands for Marine Megafauna Conservation. *Trends in Ecology & Evolution*. 2019; 34: 807–817. DOI: 10.1016/j.tree.2019.04.004 [PubMed: 31126633]
13. Duarte CM, Sintes T, Marbà N. Assessing the CO₂ capture potential of seagrass restoration projects. *Journal of Applied Ecology*. 2013; 50: 1341–1349. DOI: 10.1111/1365-2664.12155
14. Macreadie PI, et al. Blue carbon as a natural climate solution. *Nature Reviews Earth & Environment*. 2021; 2: 826–839. DOI: 10.1038/s43017-021-00224-1
15. Olsen JL, et al. The genome of the seagrass *Zostera marina* reveals angiosperm adaptation to the sea. *Nature*. 2016; 530: 331–335. DOI: 10.1038/nature16548 [PubMed: 26814964]
16. Chen LY, et al. Phylogenomic Analyses of Alismatales Shed Light into Adaptations to Aquatic Environments. *Molecular Biology and Evolution*. 2022; 39 msac079 doi: 10.1093/molbev/msac079 [PubMed: 35438770]
17. Ma X, et al. Improved chromosome-level genome assembly and annotation of the seagrass, *Zostera marina* (eelgrass). *F1000Res*. 2021; 10: 289. doi: 10.12688/f1000research.38156.1 [PubMed: 34621505]
18. Yu L, et al. Ocean current patterns drive the worldwide colonization of eelgrass (*Zostera marina*). *Nature Plants*. 2023; 9: 1207–1220. DOI: 10.1038/s41477-023-01464-3 [PubMed: 37474781]
19. Dubin MJ, Mittelsten Scheid O, Becker C. Transposons: a blessing curse. *Curr Opin Plant Biol*. 2018; 42: 23–29. DOI: 10.1016/j.pbi.2018.01.003 [PubMed: 29453028]
20. Vicent CM, Casacuberta JM. Impact of transposable elements on polyploid plant genomes. *Annals of Botany*. 2017; 120: 195–207. DOI: 10.1093/aob/mcx078 [PubMed: 28854566]
21. Böse M, Lüthgens C, Lee JR, Rose J. Quaternary glaciations of northern Europe. *Quaternary Science Reviews*. 2012; 44: 1–25. DOI: 10.1016/j.quascirev.2012.04.017
22. Van de Peer Y, Mizrachi E, Marchal K. The evolutionary significance of polyploidy. *Nat Rev Genet*. 2017; 18: 411–424. DOI: 10.1038/nrg.2017.26 [PubMed: 28502977]
23. Murat F, Armero A, Pont C, Klopp C, Salse J. Reconstructing the genome of the most recent common ancestor of flowering plants. *Nature Genetics*. 2017; 49: 490–496. DOI: 10.1038/ng.3813 [PubMed: 28288112]
24. Sensalari C, Maere S, Lohaus R. ksrates: positioning whole-genome duplications relative to speciation events in KS distributions. *Bioinformatics*. 2022; 38: 530–532. DOI: 10.1093/bioinformatics/btab602 [PubMed: 34406368]
25. Zwaenepoel A, Van de Peer Y. Inference of Ancient Whole-Genome Duplications and the Evolution of Gene Duplication and Loss Rates. *Mol Biol Evol*. 2019; 36: 1384–1404. DOI: 10.1093/molbev/msz088 [PubMed: 31004147]
26. Arber, A. *Water plants: a study of aquatic angiosperms*. Cambridge University Press; 1920.
27. Den Hartog, C. *The seagrasses of the world*. North Holland Publishing Co; 1970.
28. Harris BJ, Harrison CJ, Hetherington AM, Williams TA. Phylogenomic Evidence for the Monophyly of Bryophytes and the Reductive Evolution of Stomata. *Current Biology*. 2020; 30: 2001–2012. e2002 doi: 10.1016/j.cub.2020.03.048 [PubMed: 32302587]
29. Shulaev V, Silverman P, Raskin I. Airborne signalling by methyl salicylate in plant pathogen resistance. *Nature*. 1997; 385: 718–721. DOI: 10.1038/385718a0

30. Golicz AA, et al. Genome-wide survey of the seagrass *Zostera muelleri* suggests modification of the ethylene signalling network. *J Exp Bot.* 2015; 66: 1489–1498. DOI: 10.1093/jxb/eru510 [PubMed: 25563969]
31. Sasidharan R, Voeselek LACJ. Ethylene-Mediated Acclimations to Flooding Stress. *Plant Physiology.* 2015; 169: 3–12. DOI: 10.1104/pp.15.00387 [PubMed: 25897003]
32. Hartman S, et al. Ethylene-mediated nitric oxide depletion pre-adapts plants to hypoxia stress. *Nat Commun.* 2019; 10 4020 doi: 10.1038/s41467-019-12045-4 [PubMed: 31488841]
33. Van de Poel B, Smet D, Van Der Straeten D. Ethylene and Hormonal Cross Talk in Vegetative Growth and Development. *Plant Physiol.* 2015; 169: 61–72. DOI: 10.1104/pp.15.00724 [PubMed: 26232489]
34. Sogin EM, et al. Sugars dominate the seagrass rhizosphere. *Nat Ecol Evol.* 2022; doi: 10.1038/s41559-022-01740-z
35. Kuo, J, Cambridge, ML, Kirkman, H. Seagrasses of Australia: Structure, Ecology and Conservation. Larkum, Anthony WD, Kendrick, Gary A, Ralph, Peter J, editors. Springer International Publishing; 2018. 93–125.
36. Barnabas AD, Arnott HJ. *Zostera capensis* Setchell: root structure in relation to function. *Aquatic Botany.* 1987; 27: 309–322.
37. Taylor ARA. Studies of the development of *Zostera marina* L.: II. Germination and seedling development. *Can J Botany.* 1957; 35: 477–499.
38. Zhuo C, et al. Developmental changes in lignin composition are driven by both monolignol supply and laccase specificity. *Sci Adv.* 2022; 8 eabm8145 doi: 10.1126/sciadv.abm8145 [PubMed: 35263134]
39. Zhao Q, et al. Laccase is necessary and nonredundant with peroxidase for lignin polymerization during vascular development in *Arabidopsis*. *Plant Cell.* 2013; 25: 3976–3987. DOI: 10.1105/tpc.113.117770 [PubMed: 24143805]
40. Barros J, Dixon RA. Plant Phenylalanine/Tyrosine Ammonia-lyases. *Trends Plant Sci.* 2020; 25: 66–79. DOI: 10.1016/j.tplants.2019.09.011 [PubMed: 31679994]
41. Wang B, et al. Presence of three mycorrhizal genes in the common ancestor of land plants suggests a key role of mycorrhizas in the colonization of land by plants. *New Phytol.* 2010; 186: 514–525. DOI: 10.1111/j.1469-8137.2009.03137.x [PubMed: 20059702]
42. Strullu-Derrien C, Selosse MA, Kenrick P, Martin FM. The origin and evolution of mycorrhizal symbioses: from palaeomycology to phylogenomics. *New Phytologist.* 2018; 220: 1012–1030. DOI: 10.1111/nph.15076 [PubMed: 29573278]
43. Kohout P, et al. Surprising spectra of root-associated fungi in submerged aquatic plants. *FEMS Microbiology Ecology.* 2012; 80: 216–235. DOI: 10.1111/j.1574-6941.2011.01291.x [PubMed: 22224638]
44. Moora M, et al. AM fungal communities inhabiting the roots of submerged aquatic plant *Lobelia dortmanna* are diverse and include a high proportion of novel taxa. *Mycorrhiza.* 2016; 26: 735–745. DOI: 10.1007/s00572-016-0709-0 [PubMed: 27246225]
45. Bohrer KE, Friese CF, Amon JP. Seasonal dynamics of arbuscular mycorrhizal fungi in differing wetland habitats. *Mycorrhiza.* 2004; 14: 329–337. DOI: 10.1007/s00572-004-0292-7 [PubMed: 15015060]
46. Nielsen SL, Thingstrup I, Wigand C. Apparent lack of vesicular–arbuscular mycorrhiza (VAM) in the seagrasses *Zostera marina* L. and *Thalassia testudinum* Banks ex König. *Aquatic Botany.* 1999; 63: 261–266. DOI: 10.1016/S0304-3770(98)00123-5
47. Gomez-Roldan V, et al. Strigolactone inhibition of shoot branching. *Nature.* 2008; 455: 189–194. DOI: 10.1038/nature07271 [PubMed: 18690209]
48. Chang J, et al. The genome of the king protea, *Protea cynaroides*. *Plant J.* 2023; 113: 262–276. DOI: 10.1111/tpj.16044 [PubMed: 36424853]
49. Liu Y, et al. An angiosperm NLR Atlas reveals that NLR gene reduction is associated with ecological specialization and signal transduction component deletion. *Mol Plant.* 2021; 14: 2015–2031. DOI: 10.1016/j.molp.2021.08.001 [PubMed: 34364002]

50. Scharf KD, Berberich T, Ebersberger I, Nover L. The plant heat stress transcription factor (Hsf) family: structure, function and evolution. *Biochim Biophys Acta*. 2012; 1819: 104–119. DOI: 10.1016/j.bbagr.2011.10.002 [PubMed: 22033015]
51. Papazian S, Parrot D, Buryskova B, Weinberger F, Tasdemir D. Surface chemical defence of the eelgrass *Zostera marina* against microbial foulers. *Sci Rep*. 2019; 9 3323 doi: 10.1038/s41598-019-39212-3 [PubMed: 30804483]
52. Lamb JB, et al. Seagrass ecosystems reduce exposure to bacterial pathogens of humans, fishes, and invertebrates. *Science*. 2017; 355: 731–733. DOI: 10.1126/science.aal1956 [PubMed: 28209895]
53. Teles YCF, Souza MSR, Souza MFV. Sulphated Flavonoids: Biosynthesis, Structures, and Biological Activities. *Molecules*. 2018; 23 doi: 10.3390/molecules23020480
54. Grignon-Dubois M, Rezzonico B. Phenolic chemistry of the seagrass *Zostera noltei* Hornem. Part 1: First evidence of three infraspecific flavonoid chemotypes in three distinctive geographical regions. *Phytochemistry*. 2018; 146: 91–101. DOI: 10.1016/j.phytochem.2017.12.006 [PubMed: 29253735]
55. Vilas-Boas C, Sousa E, Pinto M, Correia-da-Silva M. An antifouling model from the sea: a review of 25 years of zosteric acid studies. *Biofouling*. 2017; 33: 927–942. DOI: 10.1080/08927014.2017.1391951 [PubMed: 29171304]
56. van Zelm E, Zhang Y, Testerink C. Salt Tolerance Mechanisms of Plants. *Annu Rev Plant Biol*. 2020; 71: 403–433. DOI: 10.1146/annurev-arplant-050718-100005 [PubMed: 32167791]
57. Gaxiola RA, et al. Drought-and salt-tolerant plants result from overexpression of the AVP1 H⁺-pump. *Proc Natl Acad Sci U S A*. 2001; 98: 11444–11449. DOI: 10.1073/pnas.191389398 [PubMed: 11572991]
58. Kumar T, Khan Uzma MR, Abbas Z, Ali GM. Genetic improvement of sugarcane for drought and salinity stress tolerance using *Arabidopsis* vacuolar pyrophosphatase (AVP1) gene. *Mol Biotechnol*. 2014; 56: 199–209. DOI: 10.1007/s12033-013-9695-z [PubMed: 24002911]
59. Yang Y, et al. Overexpression of a *Populus trichocarpa* H⁺-pyrophosphatase gene PtVP1.1 confers salt tolerance on transgenic poplar. *Tree Physiol*. 2015; 35: 663–677. DOI: 10.1093/treephys/tpv027 [PubMed: 25877769]
60. Duan XG, Yang AF, Gao F, Zhang SL, Zhang JR. Heterologous expression of vacuolar H⁽⁺⁾-PPase enhances the electrochemical gradient across the vacuolar membrane and improves tobacco cell salt tolerance. *Protoplasma*. 2007; 232: 87–95. DOI: 10.1007/s00709-007-0268-5 [PubMed: 18094929]
61. Nakamura RL, Gaber RF. Ion selectivity of the Kat1 K⁺ channel pore. *Mol Membr Biol*. 2009; 26: 293–308. DOI: 10.1080/09687680903188332 [PubMed: 19742379]
62. Morris ER, Powell DA, Gidley MJ, Rees DA. Conformations and interactions of pectins. I. Polymorphism between gel and solid states of calcium polygalacturonate. *J Mol Biol*. 1982; 155: 507–516. DOI: 10.1016/0022-2836(82)90484-3 [PubMed: 7086901]
63. Gloaguen V, et al. Structural characterization and cytotoxic properties of an apiose-rich pectic polysaccharide obtained from the cell wall of the marine phanerogam *Zostera marina*. *J Nat Prod*. 2010; 73: 1087–1092. DOI: 10.1021/np100092c [PubMed: 20465284]
64. Byrt CS, Munns R, Burton RA, Gilliam M, Wege S. Root cell wall solutions for crop plants in saline soils. *Plant Science*. 2018; 269: 47–55. DOI: 10.1016/j.plantsci.2017.12.012 [PubMed: 29606216]
65. Mølhøj M, Verma R, Reiter WD. The biosynthesis of the branched-chain sugar d--apiose in plants: functional cloning and characterization of a UDP-d--apiose/UDP-d-xylose synthase from *Arabidopsis*. *Plant J*. 2003; 35: 693–703. DOI: 10.1046/j.1365-313x.2003.01841.x [PubMed: 12969423]
66. Xu S, et al. The origin, diversification and adaptation of a major mangrove clade (Rhizophoraceae) revealed by whole-genome sequencing. *National Science Review*. 2017; 4: 721–734. DOI: 10.1093/nsr/nwx065 [PubMed: 31258950]
67. Natarajan P, et al. A reference-grade genome identifies salt-tolerance genes from the salt-secreting mangrove species *Avicennia marina*. *Communications Biology*. 2021; 4: 851. doi: 10.1038/s42003-021-02384-8 [PubMed: 34239036]

68. Dolferus R, et al. Functional analysis of lactate dehydrogenase during hypoxic stress in Arabidopsis. *Functional Plant Biology*. 2008; 35: 131–140. [PubMed: 32688764]
69. Baena-González E, Rolland F, Thevelein JM, Sheen J. A central integrator of transcription networks in plant stress and energy signalling. *Nature*. 2007; 448: 938–942. DOI: 10.1038/nature06069 [PubMed: 17671505]
70. Cho HY, Lu MYJ, Shih MC. The SnRK1-eIFiso4G1 signaling relay regulates the translation of specific mRNAs in Arabidopsis under submergence. *New Phytologist*. 2019; 222: 366–381. DOI: 10.1111/nph.15589 [PubMed: 30414328]
71. Monteiro FM, Pancost RD, Ridgwell A, Donnadieu Y. Nutrients as the dominant control on the spread of anoxia and euxinia across the Cenomanian-Turonian oceanic anoxic event (OAE2): Model-data comparison. *Paleoceanography*. 2012; 27 doi: 10.1029/2012PA002351
72. Selby D, Mutterlose J, Condon DJ. U–Pb and Re–Os geochronology of the Aptian/Albian and Cenomanian/Turonian stage boundaries: Implications for timescale calibration, osmium isotope seawater composition and Re–Os systematics in organic-rich sediments. *Chemical Geology*. 2009; 265: 394–409. DOI: 10.1016/j.chemgeo.2009.05.005
73. Kirk J. *Light and Photosynthesis in Aquatic Systems*. Light and Photosynthesis in Aquatic Ecosystems (Third edition). 2010; VI 1–651. DOI: 10.1017/CBO9781139168212
74. Campbell JE, Fourqurean JW. Mechanisms of bicarbonate use influence the photosynthetic carbon dioxide sensitivity of tropical seagrasses. *Limnology and Oceanography*. 2013; 58: 839–848. DOI: 10.4319/lo.2013.58.3.0839
75. Capó-Bauçà S, Iñiguez C, Aguiló-Nicolau P, Galmés J. Correlative adaptation between Rubisco and CO₂-concentrating mechanisms in seagrasses. *Nature Plants*. 2022; 8: 706–716. DOI: 10.1038/s41477-022-01171-5 [PubMed: 35729266]
76. Rubio L, et al. Direct uptake of HCO₃⁻ in the marine angiosperm *Posidonia oceanica* (L.) Delile driven by a plasma membrane H⁺ economy. *Plant, Cell & Environment*. 2017; 40: 2820–2830. DOI: 10.1111/pce.13057
77. Larkum AWD, Davey PA, Kuo J, Ralph PJ, Raven JA. Carbon-concentrating mechanisms in seagrasses. *Journal of Experimental Botany*. 2017; 68: 3773–3784. DOI: 10.1093/jxb/erx206 [PubMed: 28911056]
78. Koch M, Bowes G, Ross C, Zhang XH. Climate change and ocean acidification effects on seagrasses and marine macroalgae. *Global Change Biology*. 2013; 19: 103–132. DOI: 10.1111/j.1365-2486.2012.02791.x [PubMed: 23504724]
79. Chen S, Peng W, Ansah EO, Xiong F, Wu Y. Encoded C4 homologue enzymes genes function under abiotic stresses in C3 plant. *Plant Signal Behav*. 2022; 17 2115634 doi: 10.1080/15592324.2022.2115634 [PubMed: 36102341]
80. Han X, et al. Origin and Evolution of Core Components Responsible for Monitoring Light Environment Changes during Plant Terrestrialization. *Mol Plant*. 2019; 12: 847–862. DOI: 10.1016/j.molp.2019.04.006 [PubMed: 31009752]
81. McClung CR. *The Plant Circadian Oscillator*. *Biology*. 2019; 8
82. Mohr W, et al. Terrestrial-type nitrogen-fixing symbiosis between seagrass and a marine bacterium. *Nature*. 2021; 600: 105–109. DOI: 10.1038/s41586-021-04063-4 [PubMed: 34732889]
83. Tarquinio F, et al. Microorganisms facilitate uptake of dissolved organic nitrogen by seagrass leaves. *ISME J*. 2018; 12: 2796–2800. DOI: 10.1038/s41396-018-0218-6 [PubMed: 29977008]
84. Kuo, J, Hartog, Cd. *SEAGRASSES: BIOLOGY, ECOLOGY AND CONSERVATION*. Larkum, Anthony WD, Orth, Robert J, Duarte, Carlos M, editors. Springer Netherlands; 2006. 51–87.
85. Krizek BA, Fletcher JC. Molecular mechanisms of flower development: an armchair guide. *Nature Reviews Genetics*. 2005; 6: 688–698. DOI: 10.1038/nrg1675
86. Lohmann JU, Weigel D. Building beauty: the genetic control of floral patterning. *Dev Cell*. 2002; 2: 135–142. DOI: 10.1016/s1534-5807(02)00122-3 [PubMed: 11832239]
87. Remizowa MV, Sokoloff DD, Rudall PJ. Evolutionary History of the Monocot Flower. *Annals of the Missouri Botanical Garden*. 2010; 97: 617–645.
88. Ackerman, JD. *Seagrasses: Biology, Ecology and Conservation*. Larkum, Anthony WD, Orth, Robert J, Duarte, Carlos M, editors. Springer Netherlands; 2006. 89–109.

89. Orth RJ, et al. Restoration of seagrass habitat leads to rapid recovery of coastal ecosystem services. *Science Advances*. 6 eabc6434 doi: 10.1126/sciadv.abc6434
90. Cook CDK. The number and kinds of embryo-bearing plants which have become aquatic: a survey. *Perspectives in Plant Ecology, Evolution and Systematics*. 1999; 2: 79–102. DOI: 10.1078/1433-8319-00066
91. Ackerman, JD. *Seagrasses: Biology, Ecology and Conservation*. Larkum, WD, Orth, RJ, Duarte, CM, editors. Springer, NL; 2006. 89–109.
92. Waycott, M, Biffin, E, Les, DH. *Seagrasses of Australia: Structure, Ecology and Conservation*. Larkum, Anthony WD, Kendrick, Gary A, Ralph, Peter J, editors. Springer International Publishing; 2018. 129–154.
93. Pazzaglia J, Reusch TBH, Terlizzi A, Marín-Guirao L, Procaccini G. Phenotypic plasticity under rapid global changes: The intrinsic force for future seagrasses survival. *Evolutionary Applications*. 2021; 14: 1181–1201. DOI: 10.1111/eva.13212 [PubMed: 34025759]
94. Flowers TJ, Galal HK, Bromham L. Evolution of halophytes: multiple origins of salt tolerance in land plants. *Functional Plant Biology*. 2010; 37: 604–612.
95. Doyle JJ, Doyle JL. A rapid DNA isolation procedure for small quantities of fresh leaf tissue. *Phytochemical bulletin*. 1987.
96. Dudchenko O, et al. The Juicebox Assembly Tools module facilitates *de novo* assembly of mammalian genomes with chromosome-length scaffolds for under \$1000. *bioRxiv*. 2018; 254797 doi: 10.1101/254797
97. Cheng H, Concepcion GT, Feng X, Zhang H, Li H. Haplotype-resolved *de novo* assembly using phased assembly graphs with hifiasm. *Nature Methods*. 2021; 18: 170–175. DOI: 10.1038/s41592-020-01056-5 [PubMed: 33526886]
98. Yeo S, Coombe L, Warren RL, Chu J, Birol I. ARCS: scaffolding genome drafts with linked reads. *Bioinformatics*. 2018; 34: 725–731. DOI: 10.1093/bioinformatics/btx675 [PubMed: 29069293]
99. Kim D, Paggi JM, Park C, Bennett C, Salzberg SL. Graph-based genome alignment and genotyping with HISAT2 and HISAT-genotype. *Nature Biotechnology*. 2019; 37: 907–915. DOI: 10.1038/s41587-019-0201-4
100. Kovaka S, et al. Transcriptome assembly from long-read RNA-seq alignments with StringTie2. *Genome Biology*. 2019; 20: 278. doi: 10.1186/s13059-019-1910-1 [PubMed: 31842956]
101. Wu TD, Watanabe CK. GMAP: a genomic mapping and alignment program for mRNA and EST sequences. *Bioinformatics*. 2005; 21: 1859–1875. DOI: 10.1093/bioinformatics/bti310 [PubMed: 15728110]
102. Bruna T, Hoff KJ, Lomsadze A, Stanke M, Borodovsky M. BRAKER2: automatic eukaryotic genome annotation with GeneMark-EP+ and AUGUSTUS supported by a protein database. *NAR Genom Bioinform*. 2021; 3 qaa108 doi: 10.1093/nargab/lqaa108
103. Keilwagen J, Hartung F, Grau J. GeMoMa: Homology-Based Gene Prediction Utilizing Intron Position Conservation and RNA-seq Data. *Methods Mol Biol*. 2019; 1962: 161–177. DOI: 10.1007/978-1-4939-9173-0_9 [PubMed: 31020559]
104. Haas BJ, et al. Automated eukaryotic gene structure annotation using EVidenceModeler and the Program to Assemble Spliced Alignments. *Genome Biol*. 2008; 9: R7. doi: 10.1186/gb-2008-9-1-r7 [PubMed: 18190707]
105. Seppy M, Manni M, Zdobnov EM. BUSCO: Assessing Genome Assembly and Annotation Completeness. *Methods Mol Biol*. 2019; 1962: 227–245. DOI: 10.1007/978-1-4939-9173-0_14 [PubMed: 31020564]
106. Abeel T, Van Parys T, Saeys Y, Galagan J, Van de Peer Y. GenomeView: a next-generation genome browser. *Nucleic Acids Research*. 2012; 40 doi: 10.1093/nar/gkr995
107. Quevillon E, et al. InterProScan: protein domains identifier. *Nucleic Acids Res*. 2005; 33: W116–120. DOI: 10.1093/nar/gki442 [PubMed: 15980438]
108. Nordberg H, et al. The genome portal of the Department of Energy Joint Genome Institute: 2014 updates. *Nucleic Acids Res*. 2014; 42: D26–31. DOI: 10.1093/nar/gkt1069 [PubMed: 24225321]
109. Nawrocki EP, Eddy SR. Infernal 1.1: 100-fold faster RNA homology searches. *Bioinformatics*. 2013; 29: 2933–2935. DOI: 10.1093/bioinformatics/btt509 [PubMed: 24008419]

110. Kalvari I, et al. Rfam 14: expanded coverage of metagenomic, viral and microRNA families. *Nucleic Acids Res.* 2021; 49: D192–d200. DOI: 10.1093/nar/gkaa1047 [PubMed: 33211869]
111. Consortium U. UniProt: the universal protein knowledgebase in 2021. *Nucleic Acids Res.* 2021; 49: D480–d489. DOI: 10.1093/nar/gkaa1100 [PubMed: 33237286]
112. Gremme G, Steinbiss S, Kurtz S. GenomeTools: A Comprehensive Software Library for Efficient Processing of Structured Genome Annotations. *IEEE/ACM Transactions on Computational Biology and Bioinformatics.* 2013; 10: 645–656. DOI: 10.1109/TCBB.2013.68 [PubMed: 24091398]
113. Quinlan AR, Hall IM. BEDTools: a flexible suite of utilities for comparing genomic features. *Bioinformatics.* 2010; 26: 841–842. DOI: 10.1093/bioinformatics/btq033 [PubMed: 20110278]
114. Benson DA, et al. GenBank. *Nucleic Acids Res.* 2013; 41: D36–42. DOI: 10.1093/nar/gks1195 [PubMed: 23193287]
115. Xu Z, Wang H. LTR_FINDER: an efficient tool for the prediction of full-length LTR retrotransposons. *Nucleic Acids Res.* 2007; 35: W265–268. DOI: 10.1093/nar/gkm286 [PubMed: 17485477]
116. Ellinghaus D, Kurtz S, Willhoeft U. LTRharvest, an efficient and flexible software for de novo detection of LTR retrotransposons. *BMC Bioinformatics.* 2008; 9: 18. doi: 10.1186/1471-2105-9-18 [PubMed: 18194517]
117. Ou S, Jiang N. LTR_retriever: A Highly Accurate and Sensitive Program for Identification of Long Terminal Repeat Retrotransposons. *Plant Physiology.* 2017; 176: 1410–1422. DOI: 10.1104/pp.17.01310 [PubMed: 29233850]
118. Yan H, Bombarely A, Li S. DeepTE: a computational method for de novo classification of transposons with convolutional neural network. *Bioinformatics.* 2020; 36: 4269–4275. DOI: 10.1093/bioinformatics/btaa519 [PubMed: 32415954]
119. Edgar RC. Search and clustering orders of magnitude faster than BLAST. *Bioinformatics.* 2010; 26: 2460–2461. DOI: 10.1093/bioinformatics/btq461 [PubMed: 20709691]
120. Ma J, Bennetzen JL. Rapid recent growth and divergence of rice nuclear genomes. *Proc Natl Acad Sci U S A.* 2004; 101: 12404–12410. DOI: 10.1073/pnas.0403715101 [PubMed: 15240870]
121. Zwaenepoel A, Van de Peer Y. wgd—simple command line tools for the analysis of ancient whole-genome duplications. *Bioinformatics.* 2019; 35: 2153–2155. DOI: 10.1093/bioinformatics/bty915 [PubMed: 30398564]
122. Proost S, et al. i-ADHoRe 3.0 fast and sensitive detection of genomic homology in extremely large data sets. *Nucleic Acids Res.* 2012; 40 e11 doi: 10.1093/nar/gkr955 [PubMed: 22102584]
123. Sensalari C, Maere S, Lohaus R. ksrates: positioning whole-genome duplications relative to speciation events in KS distributions. *Bioinformatics.* 2021; doi: 10.1093/bioinformatics/btab602
124. Emms DM, Kelly S. OrthoFinder: phylogenetic orthology inference for comparative genomics. *Genome Biology.* 2019; 20: 238. doi: 10.1186/s13059-019-1832-y [PubMed: 31727128]
125. Löytynoja A, Goldman N. An algorithm for progressive multiple alignment of sequences with insertions. *P Natl Acad Sci USA.* 2005; 102: 10557–10562. DOI: 10.1073/pnas.0409137102
126. Huelsenbeck JP, Ronquist F. MRBAYES: Bayesian inference of phylogenetic trees. *Bioinformatics.* 2001; 17: 754–755. DOI: 10.1093/bioinformatics/17.8.754 [PubMed: 11524383]
127. Yang Z. PAML 4: phylogenetic analysis by maximum likelihood. *Mol Biol Evol.* 2007; 24: 1586–1591. DOI: 10.1093/molbev/msm088 [PubMed: 17483113]
128. An D, et al. Plant evolution and environmental adaptation unveiled by long-read whole-genome sequencing of *Spirodela*. *Proc Natl Acad Sci U S A.* 2019; 116: 18893–18899. DOI: 10.1073/pnas.1910401116 [PubMed: 31484765]
129. O’Brien KP, Remm M, Sonnhammer EL. Inparanoid: a comprehensive database of eukaryotic orthologs. *Nucleic Acids Res.* 2005; 33: D476–480. DOI: 10.1093/nar/gki107 [PubMed: 15608241]
130. Drummond AJ, Suchard MA, Xie D, Rambaut A. Bayesian phylogenetics with BEAUti and the BEAST 1.7. *Mol Biol Evol.* 2012; 29: 1969–1973. DOI: 10.1093/molbev/mss075 [PubMed: 22367748]

131. Emms DM, Kelly S. OrthoFinder: solving fundamental biases in whole genome comparisons dramatically improves orthogroup inference accuracy. *Genome Biology*. 2015; 16: 157. doi: 10.1186/s13059-015-0721-2 [PubMed: 26243257]
132. Rozewicki J, Li S, Amada KM, Standley DM, Katoh K. MAFFT-DASH: integrated protein sequence and structural alignment. *Nucleic Acids Research*. 2019; 47: W5–W10. DOI: 10.1093/nar/gkz342 [PubMed: 31062021]
133. Capella-Gutiérrez S, Silla-Martínez JM, Gabaldón T. trimAl: a tool for automated alignment trimming in large-scale phylogenetic analyses. *Bioinformatics*. 2009; 25: 1972–1973. DOI: 10.1093/bioinformatics/btp348 [PubMed: 19505945]
134. Minh BQ, et al. IQ-TREE 2: New Models and Efficient Methods for Phylogenetic Inference in the Genomic Era. *Molecular Biology and Evolution*. 2020; 37: 1530–1534. DOI: 10.1093/molbev/msaa015 [PubMed: 32011700]
135. Wang Y, et al. MCSanX: a toolkit for detection and evolutionary analysis of gene synteny and collinearity. *Nucleic Acids Res*. 2012; 40 e49 doi: 10.1093/nar/gkr1293 [PubMed: 22217600]
136. Krzywinski M, et al. Circos: an information aesthetic for comparative genomics. *Genome Res*. 2009; 19: 1639–1645. DOI: 10.1101/gr.092759.109 [PubMed: 19541911]

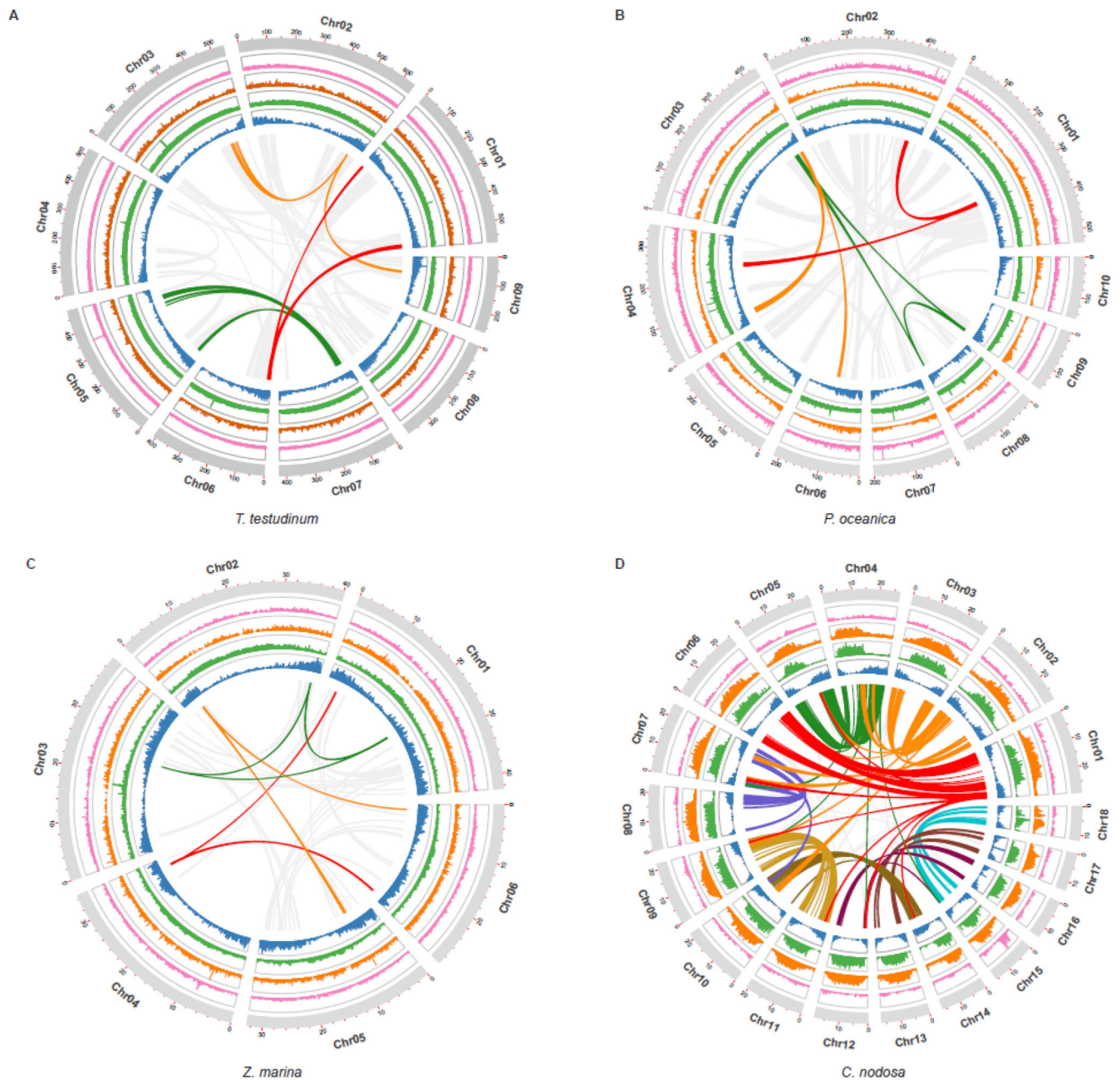


Figure 1. Distribution of the genomic features for the seagrass species *T. testudinum*, *P. oceanica*, *Z. marina* and *C. nodosa*.

Tracks from the inner to outer side correspond to gene density (blue); LTR/Gypsy density (green); LTR/Copia (orange); DNA transposable elements (pink) and chromosomes (with length in Mb). Curved lines through the center denote synteny between different genomic regions. Grey lines in A, B and C reflect synteny involving the WGD, whereas the three colored lines represent synteny with WGTs. Colored lines in D represent synteny and strong intragenomic conservation and should not be compared with colors in A, B and C (see text for further details). The distribution of the genomic features for the longest scaffolds of *P. acutifolius*, can be found in Supplementary Figure 2.1.2.

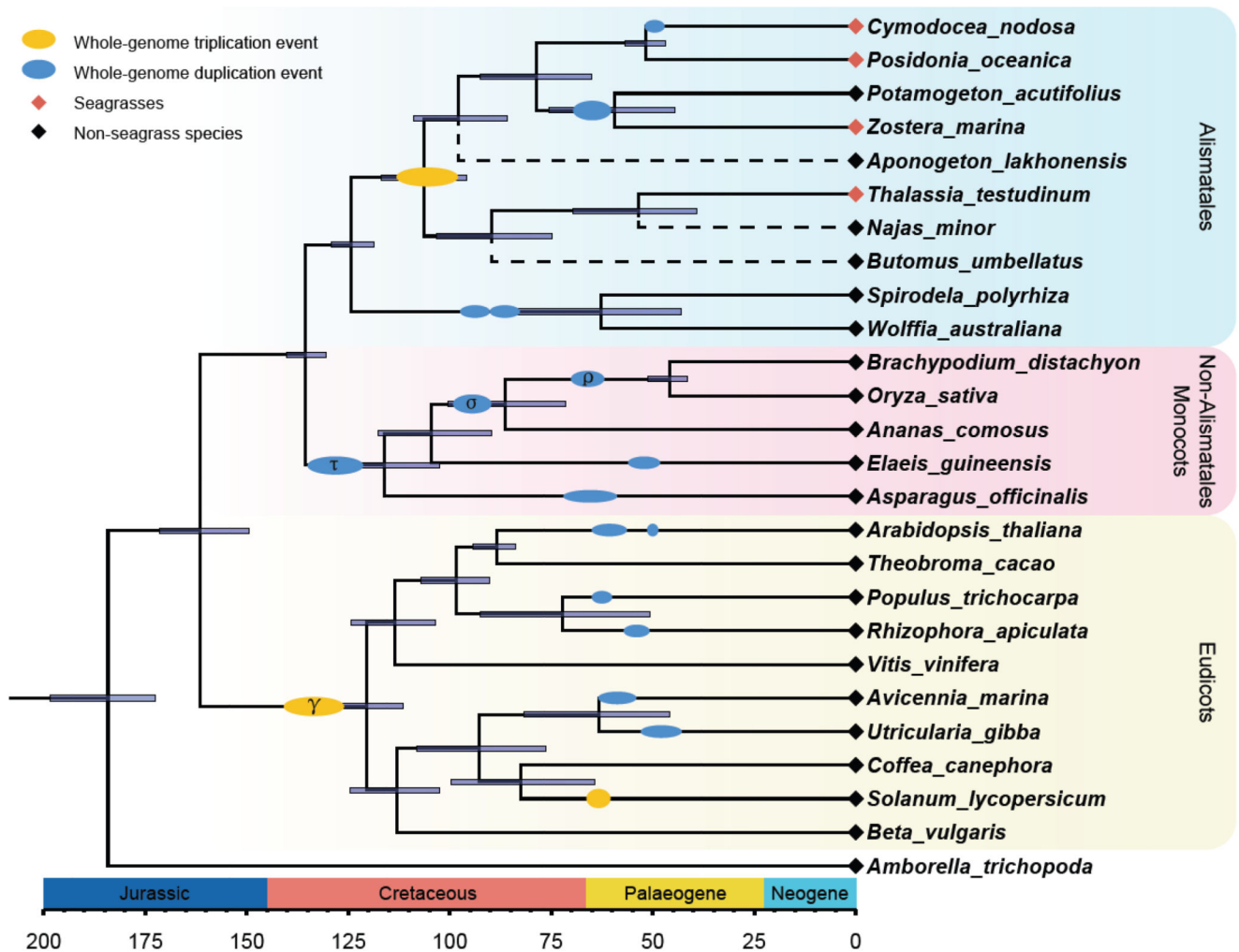


Figure 2. Time-calibrated phylogeny and WGT/WGD events across flowering plants that have chromosome-level genome assemblies.

The tree was inferred from 146 single-copy genes and show WGDs and WGTs based on inferences from the current study and previous analyses (Supplementary Table 4.2 and Supplementary Figure 4.2.8). For a more comprehensive tree showing the phylogenetic position of seagrasses within Alismatales, see Supplementary Figure 1.1. The dashed lines represent additional freshwater Alismatales species (phylogenetic position inferred using transcriptome data), mainly added for illustrative purposes to show non-monophyly of seagrass species. All branches have bootstrap support >98%. See text and Methods for details.

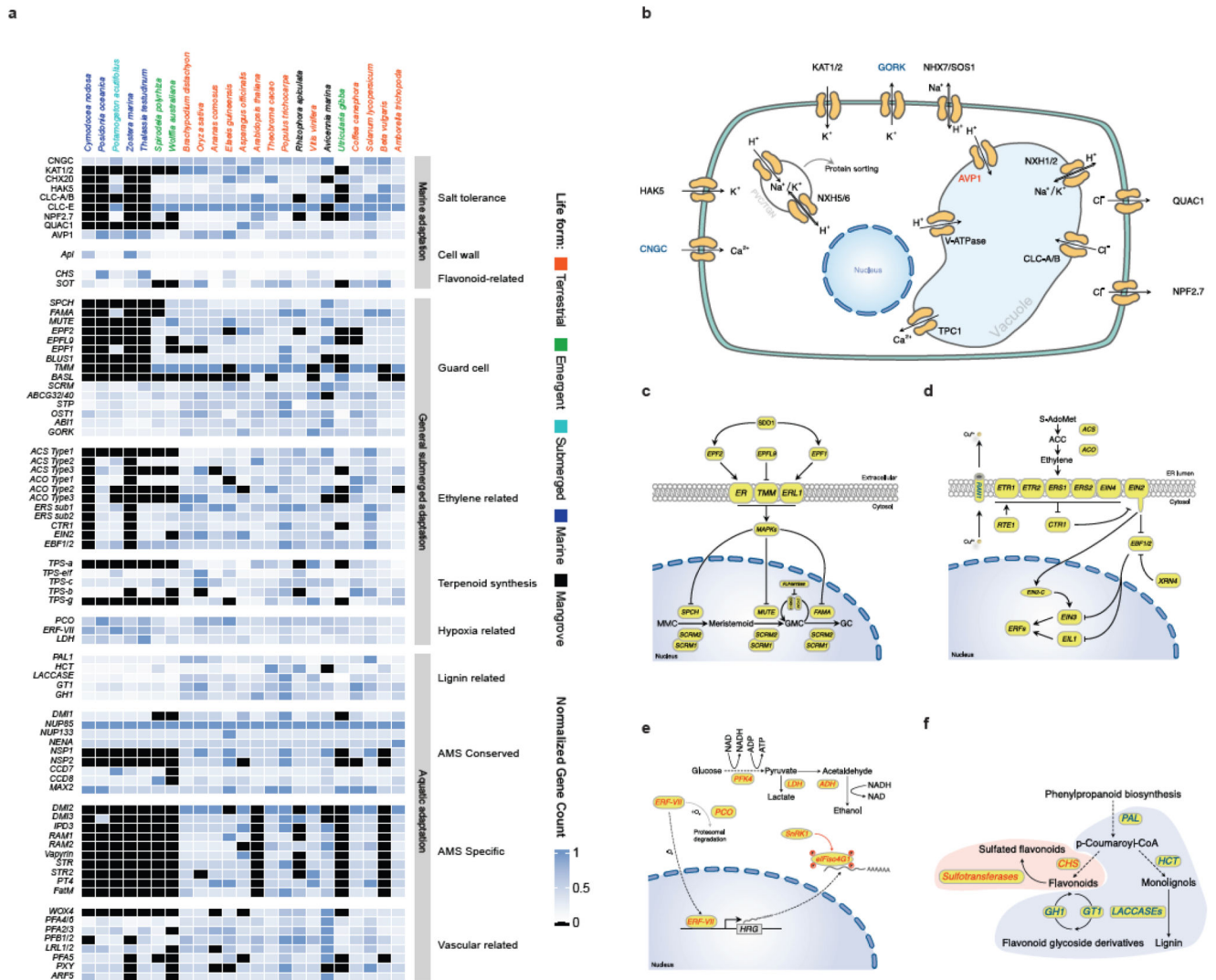


Figure 3. The loss, contraction, and expansion of gene families involved in the adaption to a marine environment.

a) The normalized gene copy numbers for 4 seagrasses and 19 representative non-seagrass species. The normalization on the family dataset divides the gene count number of each species by the largest gene copy number within that family. The species order on the top of the heatmap is the same as that in Figure 1. The colors correspond to the different life-forms. The orange ones are terrestrial species; the green ones are emergent species (floating-leaved); the light blue ones are submerged species; the navy-blue ones are marine species (seagrasses) and the black ones are mangroves **b)** Salt stress signaling implies different ion channels. *HAK5* encodes HIGH-AFFINITY POTASSIUM TRANSPORTER 5; *CNGC*, CYCLIC NUCLEOTIDE GATE CATION CHANNELS; *AVP1* encodes Vacuolar H⁺-PPases **c)** Stomata differentiation from meristemoid mother cells (MMC) to guard mother cell (GMC), to guard cells. **d)** Ethylene synthesis and signaling. **e)** The hypoxia-responsive signaling in which the direct (*ERF-VII*) and indirect responsive (*SnRK1*) pathways are expanded. The rate-limiting enzyme (encoded by *PFK4*) in the

glycolysis pathway, along with Lactate dehydrogenase (encoded by *LDH*), a rate-limiting enzyme in fermentation, are also expanded. **F**) Simplified schematic of the lignin and flavonoid biosynthesis pathways. Only steps that have significantly changed are shown. *PAL* encodes phenylalanine ammonia-lyase, which is the gateway enzyme of the general phenylpropanoid pathway; *CHS* encodes chalcone synthase, which is the first enzyme of flavonoid biosynthesis that directs the metabolic flux to flavonoid biosynthesis; *GTI* encode flavonoid glycosyltransferases, which catalyze the final step of flavonoid biosynthesis to generate various flavonoid glycoside derivatives; *GHI* encode flavonoid beta-glucosidase & myrosinase, which are responsible for the recycling of carbohydrate-based flavonoids; *HCT* encode Hydroxycinnamoyl-CoA shikimate/quinic acid hydroxycinnamoyl transferase, channels phenylpropanoids via the “esters” pathway to monolignols”; *LACCASEs* encode the final enzymes in the pathway that oxidize monolignols to facilitate their polymerization into lignin. Panels d) e) f) genes in red are expanded; blue means contracted; The dashed line in the pathway means multiple metabolic steps.

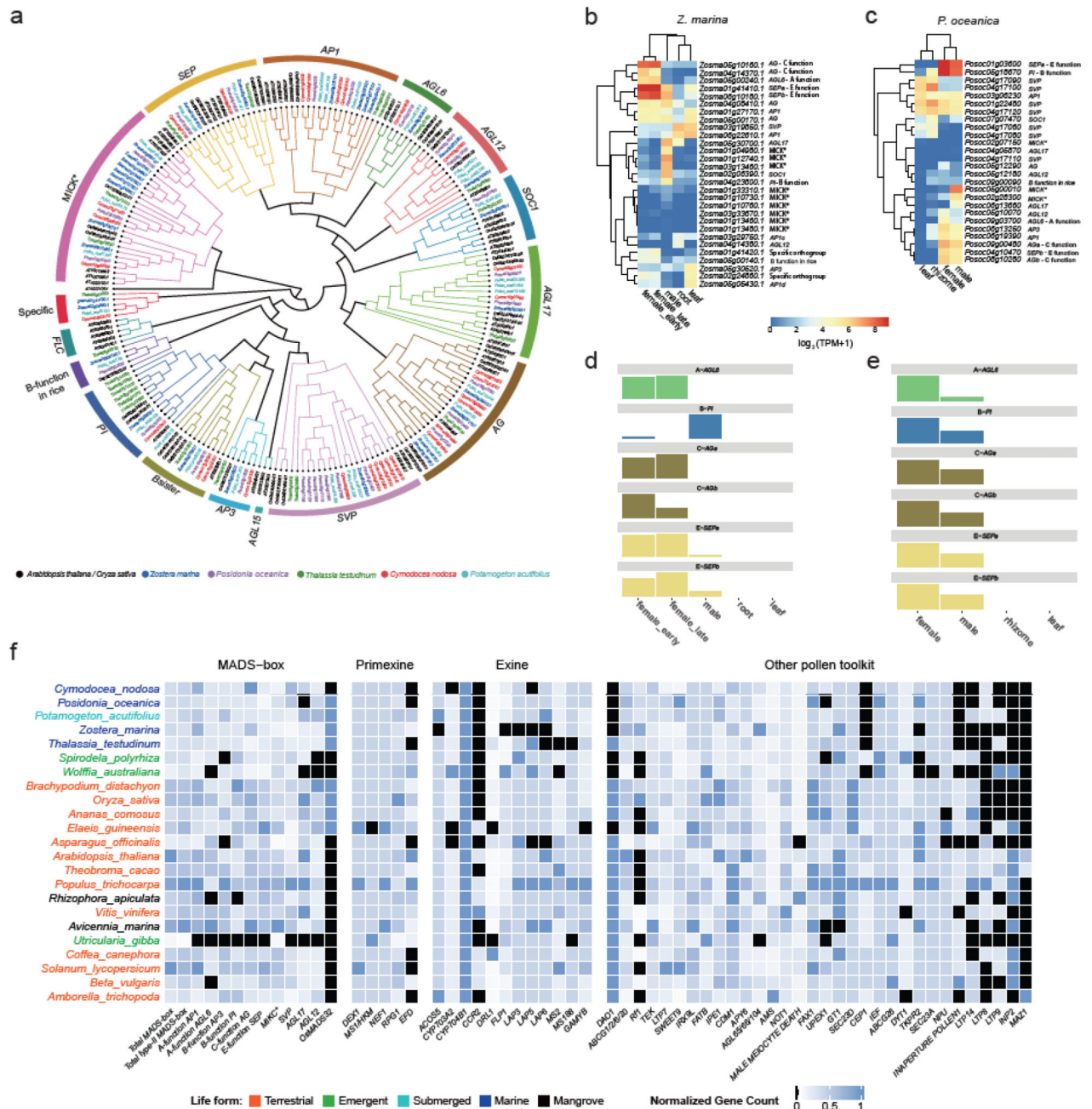


Figure 4. Flower development (like MADS-box genes) and pollen toolkit genes.

a) Phylogenetic tree of type II MADS-box genes in seagrasses and *P. acutifolius*, including *Arabidopsis thaliana* (AT) and *Oryza sativa* (Os) for reference. b) Gene expression patterns for type II MADS-box genes from various organs of *Z. marina*. Expression values were scaled by $\log_2(\text{TPM}+1)$. c) Gene expression patterns for type II MADS-box genes from various organs of *P. oceanica*. Expression values were scaled by $\log_2(\text{TPM}+1)$. d) The flowering ABCE model in *Z. marina* specifying female and male organs as proposed based on gene expression values (bar heights) from b. e) The flowering ABCE model in *P.*

oceanica specifying female and male organs as proposed based on the gene expression values (bar heights) from c. f) Normalized gene copy numbers for MADS-box and pollen toolkit genes for 4 seagrasses and 19 representative non-seagrass species. Normalization for each gene family was obtained by dividing the number of genes in that gene family for a particular species by the largest gene copy number within that family (considering all species). Genes in black are absent. Taxa are arranged phylogenetically and colored by life form.