

UC Irvine

UC Irvine Previously Published Works

Title

Platinum-trimer decorated cobalt-palladium core-shell nanocatalyst with promising performance for oxygen reduction reaction.

Permalink

<https://escholarship.org/uc/item/9fz2135d>

Journal

Nature Communications, 10(1)

Authors

Dai, Sheng

Chou, Jyh-Pin

Wang, Kuan-Wen

et al.

Publication Date

2019-01-25

DOI

10.1038/s41467-019-08323-w



Peer reviewed

ARTICLE

<https://doi.org/10.1038/s41467-019-08323-w>

OPEN

Platinum-trimer decorated cobalt-palladium core-shell nanocatalyst with promising performance for oxygen reduction reaction

Sheng Dai¹, Jyh-Pin Chou ², Kuan-Wen Wang³, Yang-Yang Hsu⁴, Alice Hu ², Xiaoqing Pan^{1,5,6} & Tsan-Yao Chen^{4,7,8,9}

Advanced electrocatalysts with low platinum content, high activity and durability for the oxygen reduction reaction can benefit the widespread commercial use of fuel cell technology. Here, we report a platinum-trimer decorated cobalt-palladium core-shell nanocatalyst with a low platinum loading of only 2.4 wt% for the use in alkaline fuel cell cathodes. This ternary catalyst shows a mass activity that is enhanced by a factor of 30.6 relative to a commercial platinum catalyst, which is attributed to the unique charge localization induced by platinum-trimer decoration. The high stability of the decorated trimers endows the catalyst with an outstanding durability, maintaining decent electrocatalytic activity with no degradation for more than 322,000 potential cycles in alkaline electrolyte. These findings are expected to be useful for surface engineering and design of advanced fuel cell catalysts with atomic-scale platinum decoration.

¹Department of Materials Science and Engineering, University of California, Irvine, CA 92697, USA. ²Department of Mechanical and Biomedical Engineering, City University of Hong Kong, Kowloon, Hong Kong. ³Institute of Materials Science and Engineering, National Central University, Taoyuan 32001, Taiwan. ⁴Department of Engineering and System Science, National Tsing Hua University, Hsinchu 30013, Taiwan. ⁵Department of Physics and Astronomy, University of California, Irvine, CA 92697, USA. ⁶Irvine Materials Research Institute (IMRI), University of California, Irvine, CA 92697, USA. ⁷Institute of Nuclear Engineering and Science, National Tsing Hua University, Hsinchu 30013, Taiwan. ⁸Higher Education Sprout Project, Competitive Research Team, National Tsing Hua University, Hsinchu 30013, Taiwan. ⁹Hierarchical Green-Energy Materials Research Center, National Cheng Kung University, Tainan 70101, Taiwan. Correspondence and requests for materials should be addressed to T.-Y.C. (email: tsanyao@mx.nthu.edu.tw)

Fuel cells, which convert chemical energy from a fuel into electricity through an electrochemical reaction, are promising for stationary power generation and transportation, and thus may help solve global problems of energy supply and clean environment^{1–4}. However, the sluggish kinetics of the oxygen reduction reaction (ORR) at the cathode, and the high cost of Pt used in electrocatalysts pose obstacles to the commercial viability of this technology^{5–7}. In the past decades, substantial efforts have been devoted to developing high-performance electrocatalysts with minimal Pt content, through the control of particle size, morphology, chemical composition, and surface configuration^{8–12}. For example, alloying Pt and non-noble metals (e.g., Fe, Co, Ni) reduces the Pt usage in electrocatalysts while improving their intrinsic ORR activity, in comparison with the pure Pt catalysts^{12–14}; decorating Pt overlayers on metal nanoparticles is another strategy to achieve decent ORR performance at a low Pt content^{15–21}.

Besides the improved ORR activity in these advanced studies^{12–21}, there is still room for higher Pt utilization efficiency at the atomic level in ORR catalysts²². In addition, it is notable that durability is an even more critical issue of the application of ORR catalysts since the agglomeration and surface corrosion of nanoparticles always result in a rapid loss of the ORR performance^{23–25}. Therefore, designing and synthesizing novel ORR catalysts that possess high catalytic activity and durability with a low Pt content remains an important challenge.

In an attempt to address these critical issues of ORR nanocatalysts, we report a new design configuration of a ternary Co-Pd-Pt catalyst at a low Pt loading of 2.4%, where Pt trimer (Pt₃) species are decorated on a Co-Pd core-shell (Co@Pd) structure. This ternary catalyst shows an ORR mass activity that is enhanced by a factor of 30.6 relative to a commercial Pt catalyst. In particular, the Co-Pd-Pt catalyst exhibits an outstanding durability, maintaining its high activity for over 322,000 potential cycles in alkaline electrolyte due to the survival and dispersion of the decorated Pt₃ species during ORR. Theoretical calculations reveal a unique charge localization on the ternary catalyst surface, induced by the Pt₃ decoration, thus weakening the chemisorbed anions and improving the ORR performance. These findings should help pave the way for atomic-scale surface engineering and design of advanced ORR nanocatalysts used in alkaline fuel cells.

Results

Sample preparation. A carbon nanotube (CNT)-supported ternary Co-Pd-Pt nanocatalyst (Co@Pd-Pt/CNT), consisting of a Co@Pd core-shell structure and surface decoration of Pt₃, was synthesized via a developed wet chemical reduction method²⁶, following a controlled sequence of Co nanoparticle formation, Pd shell growth, and Pt decoration. Particularly, the reaction time of the final step of Pt decoration was restricted within 10 s for a precise control of the Pt₃ decoration (detailed synthetic approaches are described in Methods and Supplementary Notes 1 and 2).

In addition, control samples, including CNT-supported Co (Co/CNT), CNT-supported Pt (Pt/CNT), CNT-supported Pd (Pd/CNT), CNT-supported Co-Pd core-shell (Co@Pd/CNT), CNT-supported Co-Pt core-shell (Co@Pt/CNT), and CNT-supported Pd-Pt core-shell (Pd@Pt/CNT) catalysts were also prepared through similar synthetic procedures for comparison and analysis.

Electron microscopy. Aberration-corrected scanning transmission electron microscopy (AC-STEM) was utilized to reveal morphology and structure information of the as-synthesized

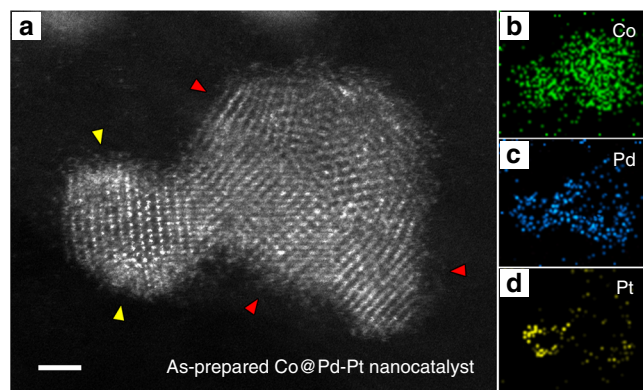


Fig. 1 Scanning transmission electron microscopy (STEM) of Pt-decorated Co-Pd. **a** Atomic-scale high angle annular dark field-STEM (HAADF-STEM) image of as-prepared Pt-decorated Co-Pd (Co@Pd-Pt) nanocatalyst. Yellow and red arrows indicate the decorated Pt species and the unconformable Pd shell regions, respectively. Scale bar: 1 nm. **b–d** EDS elemental maps of the Co@Pd-Pt nanocatalyst in **a**

Co@Pd-Pt/CNT nanocatalyst. Figure 1 shows the typical result of high angle annular dark field (HAADF)-STEM imaging and energy dispersive X-ray spectroscopy (EDS). As illustrated by the EDS elemental maps in Fig. 1b, c, a structure of a Co-rich core and a Pd-rich shell is well reflected (more STEM results showing the Co@Pd core-shell structure are provided in Supplementary Fig. 1). According to the atomic-scale STEM image, the Pd shell exhibits a unconformable characteristic, showing various crystal orientations on the Co core, as indicated by the red arrows in Fig. 1a. Moreover, the decorated Pt species can be directly observed in the HAADF-STEM image due to the highest Z-contrast²⁷ (indicated by the yellow arrows in Fig. 1a), and further confirmed by the EDS elemental map in Fig. 1d. Based on typical STEM results (see Supplementary Figs. 1 and 2), it is noticeable that the decorated Pt species show a fuzzy feature, instead of clear lattice fringes, indicating its unique structure on the Co@Pd nanoparticle surface.

According to the semi-quantitative EDS analysis, chemical composition of the Co@Pd-Pt nanoparticles is revealed as 52.1% of Co, 43.4% of Pd, and 4.5% of Pt (weight ratio). Moreover, X-ray photoelectron spectroscopy (XPS) shows that the surface composition of the as-synthesized nanoparticles is 3.9% of Co, 49.2% of Pd, and 46.9% of Pt on average, within a probing depth around 1.5 nm (see Supplementary Figs. 3–5 and Supplementary Table 1), confirming the structure of surface Pt-decorated Co-Pd core-shell nanoparticles.

X-ray absorption spectroscopy. For a deeper understanding of the unique structure of the ternary Co@Pd-Pt catalyst, X-ray absorption spectroscopy (XAS) was carried out while representative control samples were also analyzed. For example, Fig. 2a shows the normalized Pt L₃-edge X-ray absorption near-edge spectra (XANES) of Co@Pd-Pt/CNT catalyst, while the spectra of Pt/CNT, Pd@Pt/CNT, and the reference sample (Pt foil) are also provided for comparison. As indicated by the black arrow in Fig. 2a, the position of the inflection point in XANES refers to the threshold energy for 2p to 5d electron transition, and is generally proportional to the oxidation state of Pt. Clearly, positions of the inflection point of Co@Pd-Pt/CNT, Pd@Pt/CNT, and Pt/CNT catalysts are all identical to that of Pt foil, demonstrating the metallic characteristics of Pt atoms in these materials (more details can be found in Supplementary Fig. 6 showing the derivative XANES spectra in the near-edge region). Moreover, the relative extent of empty states and the splitting of Pt 5d_{5/2} orbital

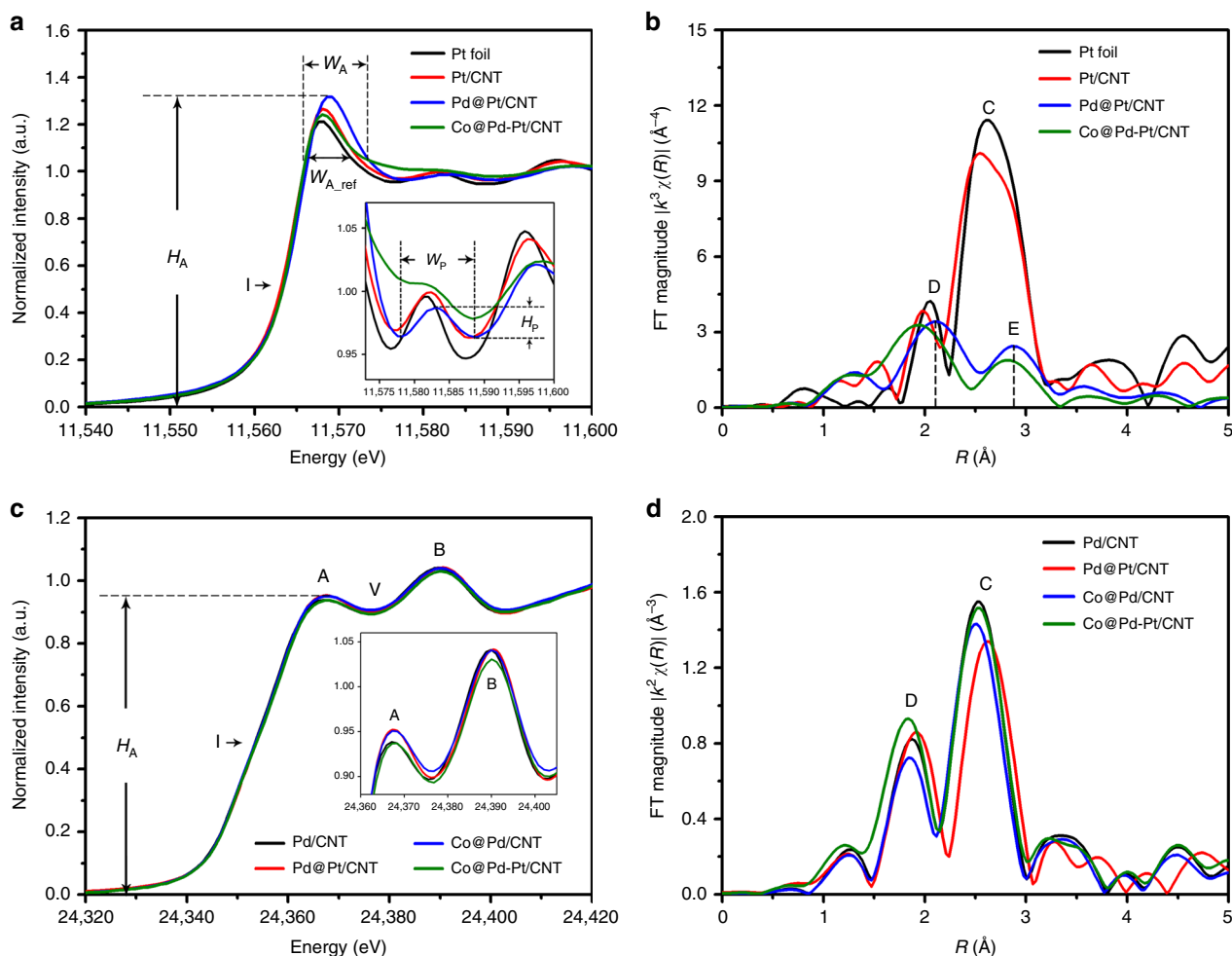


Fig. 2 X-ray absorption spectra of Pt-decorated Co-Pd and control samples. **a** X-ray absorption near-edge spectra (XANES) of Pt L_{3} -edge of standard Pt foil, Pt/carbon nanotube (CNT), Pd-Pt core-shell/CNT (Pd@Pt/CNT), and Pt-decorated Co-Pd/CNT (Co@Pd-Pt/CNT) catalysts. The inset shows the enlarged post-edge region. **b** Fourier-transformed extended X-ray absorption fine structure (FT-EXAFS) of the four samples in **a**. **c** XANES spectra of Pd K-edge of Pd/CNT, Pd@Pt/CNT, Co-Pd core-shell/CNT (Co@Pd/CNT), and Co@Pd-Pt/CNT catalysts. The inset shows the enlarged region of peaks A and B. **d** FT-EXAFS of the four samples in **c**

can be revealed through the intensity (H_A) and the width (W_A) of the main absorption peak, as illustrated in Fig. 2a. For example, compared to that of Pt foil, the absorption intensity of Pt/CNT sample (the red line) show an increment, corresponding to the oxygen chemisorption due to an absence of surface stabilization. As for the Pd@Pt/CNT sample (the blue line), a substantial increment of the absorption intensity shows that majority of the coordination sites of Pt atoms are occupied by oxygen chemisorption in this catalyst sample. However, the Co@Pd-Pt/CNT nanocatalyst (the green line) represents a much lower H_A , demonstrating a strong charge localization from the Co@Pd surface to the decorated Pt species, while the narrowest width W_A reflects the lowest extent of $5d_{5/2}$ splitting among these catalyst samples.

In addition, features in the post edge of XANES spectra, corresponding to the interference of photoelectrons with local atoms, are usually used to describe the extent of local structural ordering around the target atom. As shown in the inset of Fig. 2a, a major difference is revealed between the Pt-decorated catalysts (Pd@Pt/CNT and Co@Pd-Pt/CNT) and the Pt-based samples (Pt/CNT and Pt foil) that the intensity of the oscillation hump (H_p) decreases along with broadening of the width (W_p) of the hump in the previous two catalysts, indicating disordered structures around the decorated Pt species. Particularly, a

significantly attenuated H_p and a broadened W_p of the Co@Pd-Pt/CNT catalysts (see the green line in the inset of Fig. 2a) denote the presence of high-density local defects around Pt atoms on the Co@Pd surface.

Quantitative atomic structural parameters around the Pt atoms are further revealed by model analysis of extended X-ray absorption fine structure (EXAFS). Figure 2b presents the Fourier-transformed extended X-ray absorption fine structure (FT-EXAFS) spectra (radial structure function, RSF) of Pt L_{3} -edge of the four samples, and corresponding structural parameters are summarized in Table 1 (more details including the comparison in Supplementary Fig. 7). For example, in the RSF of Pt/CNT, the radial peak (C) at 2.75 Å accounts for the X-ray interference with metallic Pt-Pt bond of a coordination number (CN) of 6.45. In the RSF of Pd@Pt/CNT sample, it is clear that the main radial peak (1.9–3.1 Å) is split into peaks D and E, as illustrated in Fig. 2b, featuring an interference between photoelectrons and both homo-atomic Pt-Pt (at a distance (R_{Pt-Pt}) of 2.705 Å and a CN (CN_{Pt-Pt}) of 4.49) and hetero-atomic Pt-Pd ($R_{Pt-Pd} = 2.662$ Å and $CN_{Pt-Pd} = 1.46$) bond pairs in the Pt-decorated Pd nanoparticles²⁸. The radial peak with a bond length of 1.893 Å represented the oxygen chemisorption bond in Pt atoms. According to a low CN_{Pt-O} (0.57) and a substantially smaller

Table 1 Quantitative results of X-ray absorption spectroscopy model analysis at Pt L₃-edge and Pd K-edge of Co@Pd-Pt/CNT nanocatalysts and control samples

Sample	Pt L ₃ -edge				Pd K-edge			
	Bond pair	CN	R	χ	Bond pair	CN	R	χ
Co@Pd-Pt	Pt-Pt	1.95	2.691	43.5%	Pd-Pd	5.88	2.762	62.3%
	Pt-Pd	1.16	2.671	25.9%	Pd-Pt	2.91	2.711	30.8%
	Pt-Co	1.37	2.629	30.6%	Pd-Co	0.65	2.708	6.9%
Co@Pd					Pd-Pd	5.51	2.731	89.9%
					Pd-Co	0.62	2.753	10.1%
					Pd-Pt	5.5	2.75	66.7%
Pd@Pt	Pt-O	0.57	1.893		Pd-Pt	2.75	2.723	33.3%
	Pt-Pt	4.49	2.705	75.5%	Pd-O	0.47	2.03	
	Pt-Pd	1.46	2.662	24.5%				
Pt/CNT	Pt-Pt	6.45	2.752					
Pd/CNT					Pd-Pd	5.71	2.747	
					Pd-O	0.78	2.041	

CNT carbon nanotube
 χ represents a hetero-atomic intermix of coordination neighbors to the target atom in a selected bond pair. For the Pt L₃-edge result, $\chi_M = (\text{CN}_{\text{Pt-M}} / \text{CN}_{\text{Pt-total}}) \times 100\%$, where M represents neighboring atoms of Pt and $\text{CN}_{\text{Pt-total}} = \sum \text{CN}_{\text{Pt-M}}$ (for instance, $\text{CN}_{\text{Pt-total}} = \text{CN}_{\text{Pt-Pt}} + \text{CN}_{\text{Pt-Pd}}$ for the sample of Pd@Pt catalyst)
R-factor is 0.04 for Co@Pd-Pt, 0.01 for Pd@Pt, 0.01 for Pt/CNT at Pt L₃-edge; 0.02 for Co@Pd-Pt, 0.01 for Pd@Pt; and 0.01 for Pd/CNT at Pd K-edge

total CN of Pt atoms ($\text{CN}_{\text{total-Pt}} = 5.95$) than that of surface atoms in an ideal crystal ($\text{CN}_{\text{total-surface}} = 6-9$ at different facets), it can be revealed that the Pt clusters were intercalated in the top layer of the Pd crystal in the Pd@Pt/CNT catalysts.

As for the result of Co@Pd-Pt/CNT nanocatalyst (see the green line), radial peaks across 1.7–3.2 Å were attributed to Pt-Co ($R_{\text{Pt-Co}} = 2.629$ Å, $\text{CN}_{\text{Pt-Co}} = 1.37$), Pt-Pd ($R_{\text{Pt-Pd}} = 2.671$ Å, $\text{CN}_{\text{Pt-Pd}} = 1.16$), and Pt-Pt ($R_{\text{Pt-Pt}} = 2.691$ Å, $\text{CN}_{\text{Pt-Pt}} = 1.95$) bond pairs. Particularly, the CN of Pt-Pt bonds is revealed as 1.95, much smaller than that in the Pd@Pt structure. This evidence demonstrates the formation of Pt₃ (possessing an average CN of 2.0 theoretically) on the Co@Pd nanoparticle surface in the as-synthesized ternary catalyst. Although the Pt decorations look like nanometer-range clusters in our STEM observation (see Fig. 1a), they are actually the agglomerated Pt₃ species, and that is the reason why lattice fringes are not visible in the atomic-scale STEM image. Moreover, it is found that the hetero-atomic intermix of Co to Pt atoms ($\chi_{\text{Co}} = 30.6\%$) is higher than that of Pd to Pt atoms ($\chi_{\text{Pd}} = 25.9\%$), indicating a higher extent of galvanic replacement of Pt⁴⁺ to Co atoms ($\text{Pt}^{4+} + \text{Co}^0_{\text{core}} \rightarrow \text{Pt}^0_{\text{cluster}} + \text{Co}^{2+}$) during the synthesis process. Notably, the Co@Pd-Pt/CNT catalyst shows a higher total hetero-atomic intermix ($\chi_{\text{Co}} + \chi_{\text{Pd}} = 56.5\%$) than that of Pd@Pt/CNT catalysts ($\chi_{\text{total}} = \chi_{\text{Pd}} = 24.5\%$), demonstrating that the Pt₃ species are sitting at the defective regions between the Co core and the Pd shell of Co@Pd nanoparticles.

Figure 2c presents the Pd K-edge XANES spectra of the Co@Pd-Pt/CNT nanocatalyst and the control samples (Pd/CNT, Co@Pd/CNT, and Pd@Pt/CNT). It is clear that the binary and ternary catalysts are all showing identical positions of inflection point (I), two resolved peaks (A and B), and valley (V) to those of Pd/CNT, demonstrating the metallic state of Pd atoms in these samples²⁹. Particularly, as shown in the enlarged inset, the Co@Pd-Pt/CNT catalyst (the green line) represents the lowest intensities of both peaks A and B, reflecting its lowest empty state in Pd 4s/4p orbital, which is attributed to the steric coverage of Pt₃ species at the defect sites of Pd shell (near the Co core).

Moreover, Fig. 2d presents the *k*²-weighted RSF pattern of Pd K-edge of these four samples, and the fitting curves with experimental EXANES spectra are provided in Supplementary Fig. 8. Similar to the analysis of Pt L₃-edge, the radial peak C in Fig. 2d is corresponding to an interference between X-ray and metallic Pd-Pd bond pairs, while the peak D is a typical out-of-

phase X-ray interference of bond pairs between heavy transition metal atoms. Taking the Pd/CNT as a reference, the Co@Pd structure shows a decreasing intensity of peak C, confirming the unconformable structure of Pd on the Co surface. However, while the Pt₃ species are decorated on the Co@Pd surface, the intensity of peak C of Co@Pd-Pt was enhanced, close to that of metal Pd (Pd/CNT). This result indicates that Pd shell (on the Co core) tends to form a locally ordered structure with the decoration of Pt₃, although it exhibits an unconformable characteristic within a long range, as we observed in the STEM images.

Combining the above XAS analysis of both Pt L₃-edge and Pd K-edge, it is notable that the Pt-Pt bond and Pd-Pd bond of Co@Pd-Pt structure were compressed and elongated at the greatest extent, respectively (see the parameters in Table 1). Such obvious strain effect is likely to introduce charge relocation, and may affect the catalytic performance accordingly.

Ultraviolet photoelectron spectroscopy. Ultraviolet photoelectron spectroscopy (UPS) was carried out to determine the work function (ϕ) to elucidate the charge localization of the Co@Pd-Pt/CNT nanocatalyst. Work function refers to the energy that is required to remove a valence electron to infinity from a material surface of a given solid, and is a qualitative index to describe the activity of materials in a redox reaction. In general, ϕ of metallic nanoparticles is always dominated by two factors: particle size and surface configuration^{30,31}. Here, Fig. 3 compares the UPS spectra of various catalyst samples, and ϕ is determined by the position of secondary cutoff potential. Accordingly, the work function follows a trend of Co@Pd-Pt/CNT (4.51 eV) < Pt/CNT (4.74 eV) < Pd@Pt/CNT (4.77 eV) < Co@Pd/CNT (5.01 eV) < Pd/CNT (5.23 eV). Based on our STEM statistic observation (see Supplementary Table 2), it is revealed that the average size of Pd@Pt, Co@Pd, and Co@Pd-Pt nanoparticles are quite similar, within the range of 4.12–4.65 nm. However, the Co@Pd-Pt nanoparticles show a much lower work function than those two core-shell structures, indicating a unique surface effect from the Pt₃ decoration. Also, a strong charge localization on the Co@Pd-Pt surface was confirmed according to the substantially enhanced intensity (H_ϕ) of the peak M in the near-Fermi level (Fig. 3), highlighting the quantum size effect of decorated Pt₃ species³². This finding is consistent with our XAS result showing a high rate of 5d_{5/2} occupancy of the Pt atoms in Co@Pd-Pt/CNT catalyst.

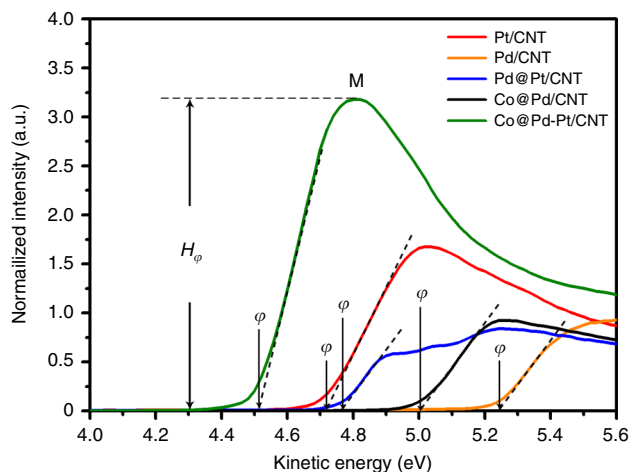


Fig. 3 Ultraviolet photoelectron spectra of Pt-decorated Co-Pd and controls. The work function of Pt-decorated Co-Pd (Co@Pd-Pt/carbon nanotube (CNT)) catalyst is lower than that of the control samples including Pt/CNT, Pd/CNT, Pd-Pt core-shell (Pd@Pt/CNT), and Co-Pd core-shell (Co@Pd/CNT) catalysts

These experimental evidences are further supported by our density functional theory (DFT) calculations. In order to mimic the structure and configuration of Co@Pd-Pt nanoparticles as revealed from our AC-STEM, XAS and additional X-ray diffraction (see Supplementary Fig. 9 and Supplementary Table 3) results, a model of five layers of 4×4 Co (111) slab capping by one layer of Pt₃-doped Pd slab was constructed (more details are provided in the calculation part of Methods). As a result, a strong electron coupling effect was revealed by the presence of a localized charge bridging the Pt and Co atoms, as illustrated in Supplementary Fig. 10, in agreement with the enhanced H_ϕ of Co@Pd-Pt nanocatalyst in the UPS result. A strong negative field is formed around the Pt₃ decoration, and may weaken the adsorption of O₂/O at the Pt₃ site, thus facilitating the ORR.

Electrochemical testing. To assess the ORR catalytic performance of Co@Pd-Pt/CNT nanocatalyst, linear sweep voltammetry (LSV) and cyclic voltammetry (CV) were carried out. ORR polarization curves of Co@Pd-Pt/CNT nanocatalysts and various control samples are provided in Supplementary Fig. 11. Electrochemical active surface areas (ECSAs) are calculated based on corresponding CV curves by using the oxygen desorption peak in the backward potential sweeping curve (detailed ECSA data of various ORR catalysts are listed in Supplementary Table 4).

Figure 4a shows a comparison of ORR polarization curves of Co@Pd-Pt/CNT and commercial Pt/C catalyst (J.M. Pt), which were normalized by the area of carbon electrode. At the initial state (see the solid lines), Co@Pd-Pt/CNT catalyst shows an enhanced half-wave potential ($E_{1/2}$) to the commercial Pt/C, indicating a smaller energy barrier for the ORR. The onset potential (E_{oc}) of Co@Pd-Pt/CNT nanocatalyst is 0.944 V vs. a reversible hydrogen electrode (vs. RHE), a little bit lower than that of commercial Pt/C (0.956 V vs. RHE), because of the oxide species on its surface (see the following CV analysis). In order to compare the activity for these two catalysts, current densities at 0.85 V vs. RHE (denoted as J_k) are normalized with respect to the loading amount of metal Pt. As illustrated in Fig. 4e, the Co@Pd-Pt/CNT catalyst exhibits an initial mass activity of 2055.1 mA mg_{Pt}⁻¹ at 0.85 V vs. RHE, representing an improvement by a factor of 30.6 relative to the commercial Pt/C catalyst (67.1 mA mg_{Pt}⁻¹ at 0.85 V vs. RHE), while at a low Pt loading of 2.4% (detailed calculation of mass activity can be found in

Supplementary Note 3, and more ORR mass activity results of the control samples are provided in Supplementary Table 5).

The long-term durability of Co@Pd-Pt/CNT catalyst was first evaluated by conducting the accelerated degradation test (ADT) up to 310,000 cycles (more detailed ADT conditions can be found in Methods). As shown in the representative ORR curves at selected ADT cycles in Fig. 4b, the ORR performance were largely retained with no degradation, even after 310k ADT cycles. For example, both E_{oc} and $E_{1/2}$ show a slight increase during the ADT cycling (Fig. 4c), indicating the additional gain of the active sites; J_k was always within a range of 5.0–5.3 mA cm⁻², showing no obvious deterioration as compared to the initial state (Fig. 4d).

For a direct comparison, the final state of ORR curves of Co@Pd-Pt/CNT catalyst (#310k cycle) and commercial Pt/C catalyst (#31k cycle, since J_k was <75% of the initial state) are plotted in Fig. 4a. Clearly, the commercial Pt/C catalyst exhibits a negative shift (−32.2 mV vs. RHE) of the half-wave potential after 31k cycles, denoting a degradation of its ORR performance due to the particle agglomeration²⁵. However, in contrast, our Co@Pd-Pt/CNT catalyst shows a positive shift (+27.1 mV vs. RHE) of the half-wave potential after continuous 310k ADT cycles, demonstrating an outstanding durability, and even an enhancement of its ORR performance.

In addition, Fig. 4e summarizes the change of mass activity of Co@Pd-Pt/CNT catalyst during ADT cycling, and the commercial Pt/C is used as a baseline catalyst for comparison. The mass activity of the commercial Pt/C degraded steadily by 30% after 31k cycles, due to the agglomeration of Pt nanoparticles (see our TEM result in Supplementary Fig. 12). However, it is surprising to find that the mass activity of the Co@Pd-Pt/CNT catalyst always maintained at a very high level, as illustrated in Fig. 4e. Notably, the mass activity was still as high as 2103.6 mA mg_{Pt}⁻¹ at 0.85 V vs. RHE after the #310k ADT cycle, suggesting this is not the limit of the Co@Pd-Pt/CNT catalyst.

Discussion

The Pt₃-decorated Co@Pd catalyst shows desirable ORR activity and durability simultaneously, as compared to the advanced Pt-decorated metal catalysts in alkaline media from the literature^{33–36}, in which the highest mass activity is at a level of about 400 mA mg_{Pt}⁻¹ at 0.85 V vs. RHE and the degradation always takes place around 5k cycles (more detailed comparisons are summarized in Supplementary Table 6). Clearly, in contrast to the Pt overlayers and large Pt clusters on metal nanoparticles^{33–36}, the atomic-scale Pt decoration²⁶ on Co@Pd nanoparticle not only shows a unique surface configuration at a higher Pt utilization efficiency, but also provides a further improved promotion effect toward ORR.

To have a better understanding of the specific advantages from the Pt₃ decoration, we first analyze the CV curves of the Co@Pd-Pt catalyst that were collected during the ADT cycling, as shown in Fig. 4f (more detailed CV curves at every 10,000 of the first 70,000 cycles are provided in Supplementary Fig. 13). At the initial state (the red solid line), current peaks corresponding to the redox of the metal nanoparticle surface can be revealed: for example, the five current peaks (B₁–B₅), as marked in the forward sweeping curve, are attributed to the formation of oxide species with different combinations of Co, Pd, and Pt, while the obvious peak C in the backward sweeping is determined as reduction of PdO, according to the literature^{37,38} as well as our CV results of control samples and theoretical calculation (more details are expanded in Supplementary Note 4 on the basis of Supplementary Fig. 14 and Supplementary Tables 7 and 8). As the ADT going on, an obvious evolution of the oxide reduction peak C is found during the first 50k cycles: the peak intensity was

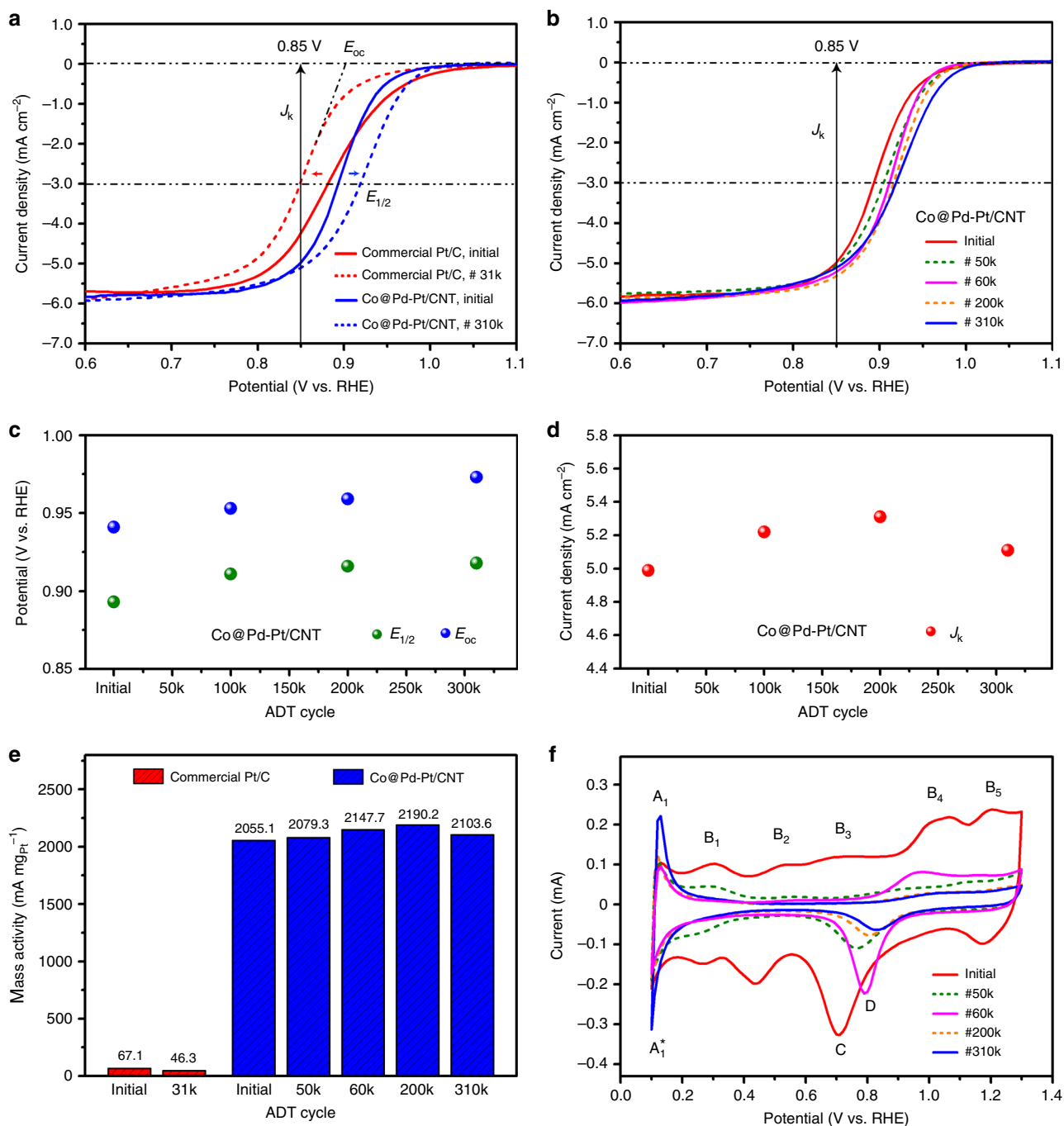


Fig. 4 Electrochemical results of Pt-decorated Co-Pd nanocatalyst. **a** Initial and final oxygen reduction reaction (ORR) polarization curves of commercial Pt/C and Pt-decorated Co-Pd (Co@Pd-Pt/carbon nanotube (CNT)) catalysts. **b** ORR polarization curves of Co@Pd-Pt/CNT at selected accelerated degradation test (ADT) cycles. **c** Changes of onset potential and half-wave potential of Co@Pd-Pt/CNT at selective ADT cycles. **d** Changes of kinetic current density of Co@Pd-Pt/CNT at selective ADT cycles. **e** Comparison of ORR mass activity of commercial Pt/C and Co@Pd-Pt/CNT at selected ADT cycles. **f** Cyclic voltammetry (CV) curves of Co@Pd-Pt/CNT at selected ADT cycles

decreasing while the peak position was gradually shifting to the high potential region, reflecting a catalyst surface reconstruction. Meanwhile, the redox peaks at hydrogen underpotential deposition (H_{upd}) region, as indicated by A_1 and A_1^* in Fig. 4f, were becoming narrow and sharp at the position of ~ 0.1 V vs. RHE, showing a unique hydrogen adsorption/desorption characteristic of the Co@Pd-Pt catalyst. According to the published results in literature, this kind of strong H_2 evolution activity is a typical feature of sub-nanometer Pt clusters^{39–41}, consistent with the decorated Pt_3 species on the Co@Pd surface.

Then, between the interval from #50k to #60k cycles, the oxide reduction peak C continued to shift to the high potential region, but the intensity was greatly enhanced at #60k ADT cycles, as denoted by peak D, which can be determined as reduction of PtO ^{37,38}. In view of the gradually enhanced peaks A_1 and A_1^* , it can be concluded that the oxygen reduction activity at the catalyst surface was dominated by Pt phase at that time, instead of the initial Pd phase. Afterwards, the shape of CV curves was relatively stable during the subsequent ADT cycles (from #60k to #310k) and the peak intensities of A_1 and A_1^* were continuously

becoming stronger, demonstrating that the sub-nanometer Pt decoration still survived with a further increment of their surface area.

For a direct visualization of the survival of the Pt decoration, atomic-scale STEM characterization was carried out on the post-ADT Co@Pd-Pt/CNT catalyst that was collected after 310,000 ADT cycles. As a comparison, Fig. 5 presents the atomic-scale HAADF-STEM images of the as-prepared Co@Pd-Pt/CNT catalyst (Fig. 5a) and the post-ADT one (Fig. 5b). Obviously, the distribution of Pt₃ species was changing during the ADT cycling, validating the proposed surface reconstruction: the initially agglomerated Pt₃ species (as indicated by yellow arrows in Fig. 5a) dispersed into isolated atomic-scale Pt species on the Co@Pd nanoparticle surface. Particularly, the predominant Pt species in the post-ADT sample were revealed as isolated Pt₃, which can be directly observed in Fig. 5b (as highlighted by yellow circles), while some Pt single atoms (Pt₁) were also found (as marked by red circles). Quantitative analysis regarding the size of Pt₃ species are expanded in Supplementary Note 5. Based on STEM data with higher statistics (e.g., see Supplementary Fig. 15), the density of Pt₃ in the post-ADT catalyst is estimated to be as high as 4.6 Pt₃/100 nm², indicating that majority of Pt₃ decoration survived on the Co@Pd nanoparticle surface after over 300,000 ADT cycles.

Actually, the defective region between the Co core and the uncomfortable Pt shell plays an important role in dispersing the Pt₃ species. As revealed through the STEM and XAS results, decorated Pt₃ species prefer to sit at the defective regions between the Co core and the Pt shell. Therefore, since considerable amount of defect sites are generated on the Co@Pd surface during ORR due to decomposition of Pd/Co oxides and desorption of oxygen species, the Pt₃ species tend to relocate at the new defective sites to minimize the surface energy. This behavior is the origin for enhancement of ORR activity that was observed in the Co@Pd-Pt catalyst during the continuous potential sweeping.

For a further exploration of the stability of the Pt₃ species on the Co@Pd surface, we stored the rotation electrode (after 310,000 ADT cycles) in distilled water for a couple of days to restore its pH value, and then continued the electrochemical testing for additional 12,000 ADT cycles; therefore, 322k cycles in total. Consequently, the Co@Pd-Pt catalyst was still highly active, representing a stable mass activity (>2000 mA mg_{Pt}⁻¹ at 0.85 V vs. RHE) after #322k ADT cycle, as compared to the state before storage. This result further highlights the outstanding durability

of the Co@Pd-Pt/CNT catalyst, which is promising in practical and commercial applications of alkaline fuel cells.

According to our experimental evidence, it is confirmed that the decorated Pt₃ species are stable and dominate the surface oxygen redox of Co@Pd-Pt/CNT catalyst. Going a step further for deeper mechanistic insights, DFT calculation revealed the ORR promotion effect of the Pt₃ decoration on the Co@Pd surface (more calculation details are provided in Methods). As shown by the result in Supplementary Fig. 10, both the charge localization around Pt₃ and the electron-coupling effect between Pt and Co atoms are revealed, thus high density of electrons were extracted in the near-Fermi level. Hence, a strong negative electric field is induced and weakens the adsorption of O/O₂ at the Pt₃ and its neighboring sites. Furthermore, we calculated the oxygen adsorption energy ($E_{\text{O}}^{\text{ads}}$) on the surface of Co@Pd-Pt catalyst as well as Pt (111) and Pd (111) surfaces, and the result is illustrated in Fig. 6. Accordingly, it is clear that $E_{\text{ads}}^{\text{O}}$ peaks and $E_{\text{ads}}^{\text{O}}$ valleys are distributed periodically in the contours of Pt (111) and Pd (111) surfaces. However, the presence of slight gradient of $E_{\text{O}}^{\text{ads}}$ is found on the Co@Pd-Pt surface, indicating feasible relocation pathways for the O^{ads} between O₂ splitting sites (site S) and O reduction sites (site V). Meanwhile, relocation of O^{ads} to the neighboring sites reduces the possibility of passivation on Pt₃ by intermediates (e.g., the suppressed electric double layer current in the CV curves). This characteristic enables the neighboring sites to share the loading from the Pt₃ in subsequent reaction steps, and maintain the high ORR activity of the Co@Pd-Pt/CNT catalyst.

Furthermore, it is found that the adsorption energy for O₂ molecule ($E_{\text{ads}}^{\text{O}_2}$) is very close to 0 on most surface sites of Co@Pd-Pt (see the data in Supplementary Tables 9 and 10). This characteristic implies a substantially weakened O₂ adsorption on the Co@Pd-Pt surface, which exhibits an oxidation resistance, as compared to the Pt (111) or the Pd (111) surface, thus improving the durability of the Co@Pd-Pt/CNT catalyst. Notably, the theoretical findings that the Pt₃ decoration not only reduces the Pt loading, but also provides a unique charge localization state that greatly improves the ORR performance.

In conclusion, we designed and synthesized a ternary nanocatalyst with low Pt-loading that consists of a Co@Pd core-shell structure and surface decoration of Pt₃ species to catalyze ORR in alkaline electrolytes. Advanced characterization result and theoretical calculation revealed a unique charge localization induced by the Pt₃ decoration at the interfacial region between Co core

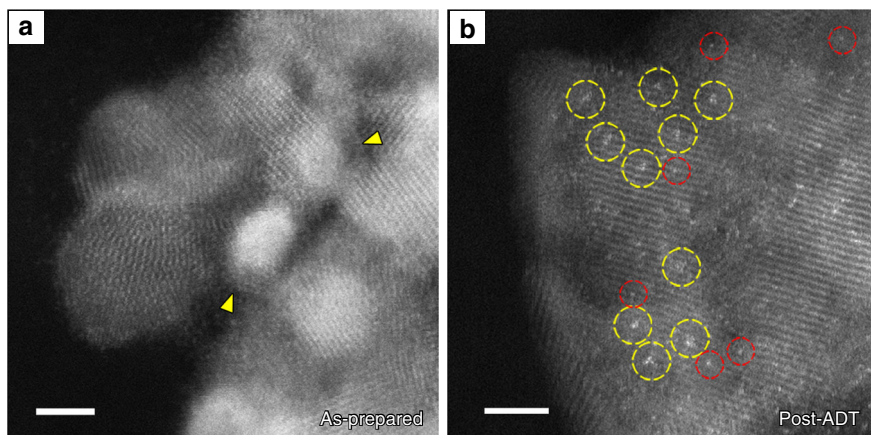


Fig. 5 Dispersion of Pt trimer species on the Co-Pd surface. **a** High angle annular dark field-scanning transmission electron microscopy (HAADF-STEM) image of the as-prepared Pt-decorated Co-Pd (Co@Pd-Pt) catalyst. Yellow arrows indicate the agglomerated Pt trimer species. Scale bar: 2 nm. **b** HAADF-STEM image of the Co@Pd-Pt catalyst after 310,000 accelerated degradation test (ADT) cycles. Yellow and red circles indicate the dispersed Pt trimer species and single Pt atoms, respectively. Scale bar: 2 nm

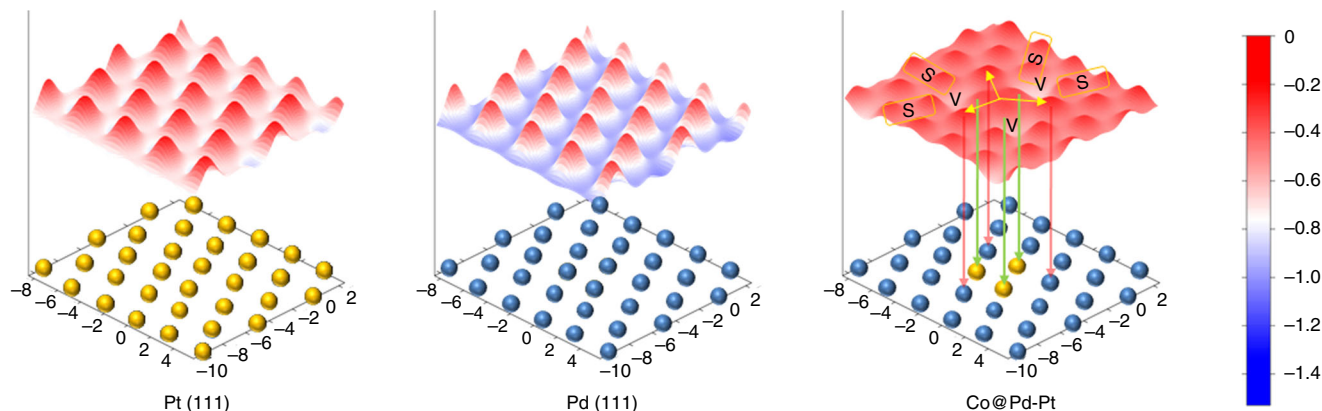


Fig. 6 Contours of oxygen adsorption energy, $E_{\text{ads}}^{\text{O}}$ in models of Pt (111), Pd (111), and Pt-decorated Co-Pd catalyst surface. Atomic structures of the topmost layers are shown in schematics in which blue and yellow spheres correspond to Pd and Pt atoms, respectively. Co atoms are not shown in the Pt-decorated Co-Pd (Co@Pd-Pt) model

and Pd shell. Accordingly, the Co@Pd-Pt catalyst shows an ORR mass activity improved by a factor of 30.6 relative to a commercial Pt catalyst. In particular, this ternary catalyst exhibits an outstanding durability, maintaining the high activity, without degradation, for more than 322,000 potential cycles in alkaline electrolytes, due to the decorated Pt_3 species that becomes dispersed and stabilized on the Co@Pd surface under working condition.

The Co@Pd-Pt catalyst, possessing desirable catalytic activity and durability simultaneously with a low Pt content, is promising for the future development of low-cost, high-performance alkaline fuel cells. Of course, the strategy to decorate atomic-level Pt species on the defective regions of the metals is not limited to the Co-Pd-Pt system, and can be extended further and make applicable to the other catalyst systems with most types of 3d transition metals in the core region.

Methods

Catalyst synthesis. Pt_3 decorated Co-Pd core-shell nanocatalysts were synthesized by a wet chemical reduction method with sequential control. To improve the attachment, CNT support (CNT, Cnano Technology Ltd.) was acid treated in aqueous solution of 4.0 M sulfuric acid at 80 °C for 4 h (corresponding characterization result is presented in Supplementary Fig. 16). The CNT powders were filtered and then washed with distilled water until the pH value of the washing liquid reached 6.0. After washing and drying, the resulting 36 mg of CNT powder was immersed in an aqueous solution of cobalt chloride (CoCl_2 , 99%, MW = 129.84, Sigma-Aldrich Co.) and stirred at 250 rpm at 25 °C for 4 h. This solution (solution A) contained 33.0 mg CoCl_2 (0.25 mmol of Co metal ion) and 6.0 g H_2O . After immersion, 3.0 g of H_2O solution containing 20.0 mg (0.54 mmol) NaBH_4 (99%, Sigma-Aldrich Co.) was added to solution A and stirred at 250 rpm for 10 s. Then, Pd precursor solution comprising 2.0 g distilled water and ~48.4 mg (~0.046 mmol) Pd ion was added in solution A to form solution B. In solution B, the mole ratio of Co/Pd was 1.0. The Pd precursor solution was prepared by dissolving metal powders (Pd, 99%, Sigma-Aldrich Co.) in 1.0 M $\text{HCl}_{(\text{aq})}$. After 20 s, 500 mg of aqueous solution containing ~26.6 mg $\text{H}_2\text{PtCl}_6 \cdot 6\text{H}_2\text{O}$ (99%, Sigma-Aldrich Co.) was added to solution B within a reaction time of 10 s (the atomic ratio of Pt/Pd is 1/20). In this step, Pt^{4+} was adsorbed on defect sites of the Pd shell and Co-Pd interface, and then reduced to Pt_3 by interacting with H.

Synthesis of Co@Pd/CNT nanocatalysts followed similar processes as those used for the preparation Co@Pd-Pt/CNT nanocatalyst, except for the Pt decoration treatment. Co@Pt/CNT and Pd@Pt/CNT nanocatalysts were synthesized by immersing CNT in Co and Pd precursor aqueous solution at 25 °C for 4 h, respectively, followed by the addition of 3.0 g of NaBH_4 , and then 500 mg of Pt precursor solution to the reaction system. More details of sample preparation are provided in Supplementary Information.

Structure characterization. TEM was performed on a JEOL Grand ARM equipped with two spherical aberration correctors at 300 kV. HAADF-STEM images were recorded using a convergence semi-angle of 22 mrad, and inner and outer collection angles of 83 and 165 mrad, respectively. XAS, XPS, and UPS experiments were carried out at beamlines BL-17C, 01C1, and BL-24A1 of the National Synchrotron Radiation Research Center (NSRRC, Taiwan). XRD patterns

were measured at beamline BL-12B2 of Spring-8, Japan. Model analysis was conducted in the Artemis program with atomic structural models determined in physical structure characterization, and models for data analysis were generated by feff8.0 code.

Electrochemical testing. As-synthesized nanocatalysts were mixed in a slurry sample and coated on a rotational disk electrode to conduct LSV and CV analyses. The slurry samples were made of 5.0 mg active carbon-supported nanocatalysts mixed in distilled water (14.0 mL), IPA (6.0 mL), and 5 wt% Nafion (0.1 mL). The mixture was stirred at 250 rpm for 30 min prior to ultrasonication at 30 °C for 30 min. To prepare the working electrode in the ORR sweeping experiment, the slurry (20.0 μL) was dropped and dried on top of a rotating graphite electrode (with a diameter of 5.0 mm). LSV data were collected using a potentiostat (CH Instruments Model 600B) equipped with a three-electrode electrochemical system. This system consisted of a standard electrode of mercury oxide electrode (the voltage was calibrated by 0.098 V in alignment to that of RHE), a counter electrode of Pt metal wire, and a working electrode. The electrolyte was an aqueous solution of KOH (0.1 M). The voltage scan rate was 5 mV s^{-1} for LSV and 50 mV s^{-1} for the accelerated degradation test. In these tests, the speed of the rotation electrode was 1600 rpm.

First principle calculation. Calculations based on DFT were carried out with the Vienna Ab-initio Simulation Package^{42–45}. All the calculations were performed using a plane-wave basis with a cutoff kinetic energy of 420 eV and the projector augmented wave method^{46,47}. The exchange-correlation functional was treated at the level of the generalized gradient approximations, using the Perdew–Burke–Ernzerhof functional⁴⁸. The structure of Co@Pd-Pt catalyst was modeled by a five layer of 4×4 Co (111) slab capping by one layer of Pd doped with Pt_3 ($\text{Co}_5\text{LPd}_1\text{L-Pt}_3$), which represents the structure of Co@Pd-Pt based on our experimental evidence, particularly, taking the neighboring Co and Pd atoms around Pt_3 into account. It is worthwhile noting that the (111) slab in face-centered cubic phase is used to keep consistent with the observation from the XRD result (see Supplementary Fig. 9) showing the preferential growth of the (111) facet in the Co@Pd-Pt/CNT catalyst. For comparison, the models of three Pt atoms incorporating into six layers of Pd (111) and three Pt atoms incorporating into six layers of Co(111) were also constructed, respectively. In the calculation part, the Pt atoms were positioned at different sorption sites of the top layer to confirm the most stable atomic configuration. We applied $5 \times 5 \times 1$ Γ -centered k -points to map the Brillouin zone and an inter-slab vacuum spacing of 15 Å to avoid the interaction between the replicas of the slabs. The sensitivity of total energies for slab thickness, vacuum spacing, and kinetic energy cutoff were examined as well. All the relevant adsorbates and the upper most four layers of slabs were fully relaxed, while the bottom two layers were fixed to their calculated bulk position.

To investigate the electron localization of Co@Pd-Pt catalyst quantitatively, we introduced the charge density difference distribution ($\Delta\rho$), which is defined as $\Delta\rho = \rho_{\text{T}} - \rho_{\text{S}} - \rho_{\text{Pt}}$. Here, ρ_{T} is the charge density of $\text{Co}_5\text{LPd}_1\text{L}(111)\text{-Pt}_3$ model, ρ_{S} is the charge density of $\text{Co}_5\text{LPd}_1\text{L}(111)$ without Pt_3 decoration, and ρ_{Pt} is the charge density of isolated Pt_3 at the same position in the model.

The adsorption energy (E_{ads}) of a single oxygen atom adsorbed on the surfaces of interest is defined as $E_{\text{ads}} = E(\text{O} - \text{NC}) - 1/2E(\text{O}_2) - E(\text{NC})$, where $E(\text{O} - \text{NC})$ is the total energy of the entire system, $E(\text{O}_2)$ is the energy of an oxygen molecule, and $E(\text{NC})$ is the energy of the pristine slab. The negative values of E_{ads} refer to the oxygen adsorption in endothermic.

Data availability

The data that support the findings of this study are available from the corresponding author on reasonable request.

Received: 25 February 2018 Accepted: 4 January 2019

Published online: 25 January 2019

References

- Gasteiger, H. A. & Markovic, N. M. Just a dream—or future reality? *Science* **324**, 48–49 (2009).
- Debe, M. K. Electrocatalyst approaches and challenges for automotive fuel cells. *Nature* **486**, 43–51 (2012).
- Wagner, F. T., Lakshmanan, B. & Mathias, M. F. Electrochemistry and the future of the automobile. *J. Phys. Chem. Lett.* **1**, 2204–2219 (2010).
- Katsounaros, I., Cherevkov, S., Zeradjanin, A. R. & Mayrhofer, K. J. J. Oxygen electrochemistry as a cornerstone for sustainable energy conversion. *Angew. Chem. Int. Ed.* **53**, 102–121 (2014).
- Wu, J. & Yang, H. Platinum-based oxygen reduction electrocatalysts. *Acc. Chem. Res.* **46**, 1848–1857 (2013).
- Greeley, J. et al. Alloys of platinum and early transition metals as oxygen reduction electrocatalysts. *Nat. Chem.* **1**, 552–556 (2009).
- Shao, M., Chang, Q., Dodelet, J. P. & Chenitz, R. Recent advances in electrocatalysts for oxygen reduction reaction. *Chem. Rev.* **116**, 3594–3657 (2016).
- Stamenkovic, V. R. et al. Effect of surface composition on electronic structure, stability, and electrocatalytic properties of Pt-transition metal alloys: Pt-skin versus Pt-skeleton surfaces. *J. Am. Chem. Soc.* **128**, 8813–8819 (2006).
- Zhang, J., Yang, H., Fang, J. & Zou, S. Synthesis and oxygen reduction activity of shape-controlled Pt₃Ni nanopolyhedra. *Nano Lett.* **10**, 638–644 (2010).
- Wang, D. et al. Structurally ordered intermetallic platinum–cobalt core-shell nanoparticles with enhanced activity and stability as oxygen reduction electrocatalysts. *Nat. Mater.* **12**, 81–87 (2013).
- Chen, C. et al. Highly crystalline multimetallic nanoframes with three dimensional electrocatalytic surfaces. *Science* **343**, 1339–1343 (2014).
- Huang, X. et al. High-performance transition metal-doped Pt₃Ni octahedra for oxygen reduction reaction. *Science* **348**, 1230–1234 (2015).
- Wu, J. et al. Truncated octahedral Pt₃Ni oxygen reduction reaction electrocatalysts. *J. Am. Chem. Soc.* **132**, 4984–4985 (2010).
- Choi, S. I. et al. Synthesis and characterization of 9 nm Pt-Ni octahedra with a record high activity of 3.3 A/mg_{Pt} for the oxygen reduction reaction. *Nano Lett.* **13**, 3420–3425 (2013).
- Shao, M., Sasaki, K., Marinkovic, N. S., Zhang, L. & Adzic, R. R. Synthesis and characterization of platinum monolayer oxygen-reduction electrocatalysts with Co-Pd core-shell nanoparticle supports. *Electrochem. Commun.* **9**, 2848–2853 (2007).
- Sarkar, A., Murugan, A. V. & Manthiram, A. Pt-encapsulated Pd-Co nanoalloy electrocatalysts for oxygen reduction reaction in fuel cells. *Langmuir* **26**, 2894–2903 (2010).
- Wang, D. et al. Pt-decorated PdCo@Pd/C core-shell nanoparticles with enhanced stability and electrocatalytic activity for the oxygen reduction reaction. *J. Am. Chem. Soc.* **132**, 17664–17666 (2010).
- Zhou, W. P. et al. Gram-scale-synthesized Pd₂Co-supported Pt monolayer electrocatalysts for oxygen reduction reaction. *J. Phys. Chem. A* **114**, 8950–8957 (2010).
- Wang, D. et al. Facile synthesis of carbon-supported Pd-Co core-shell nanoparticles as oxygen reduction electrocatalysts and their enhanced activity and stability with monolayer Pt decoration. *Chem. Mater.* **24**, 2274–2281 (2012).
- Singh, R. K., Rahul, R. & Neergat, M. Stability issues in Pd-based catalysts: the role of surface Pt in improving the stability and oxygen reduction reaction (ORR) activity. *Phys. Chem. Chem. Phys.* **15**, 13044–13051 (2013).
- Trinh, Q. T., Yang, J., Lee, J. Y. & Saeys, M. Computational and experimental study of the volcano behavior of the oxygen reduction activity of PdM@PdPt/C (M = Pt, Ni, Co, Fe, and Cr) core-shell electrocatalysts. *J. Catal.* **291**, 26–35 (2012).
- Liu, J. et al. High performance platinum single atom electrocatalyst for oxygen reduction reaction. *Nat. Commun.* **8**, 15938 (2017).
- Carpenter, M. K., Moylan, T. E., Kukreja, R. S., Atwan, M. H. & Tessema, M. M. Solvothermal synthesis of platinum alloy nanoparticles for oxygen reduction electrocatalysis. *J. Am. Chem. Soc.* **134**, 8535–8542 (2012).
- Cui, C., Gan, L., Heggen, M., Rudi, S. & Strasser, P. Compositional segregation in shaped Pt alloy nanoparticles and their structural behaviour during electrocatalysis. *Nat. Mater.* **12**, 765–771 (2013).
- Lafforgue, C., Chatenet, M., Dubau, L. & Dekel, D. R. Accelerated stress test of Pt/C nanoparticles in an interface with an anion-exchange membrane—an identical-location transmission electron microscopy study. *ACS Catal.* **8**, 1278–1286 (2018).
- Zhuang, Y. et al. Atomic scale Pt decoration promises oxygen reduction properties of Co@Pd nanocatalysts in alkaline electrolytes for 310k redox cycles. *Sustain. Energy Fuels* **2**, 946–957 (2018).
- Crewe, A. V., Wall, J. & Langmore, J. Visibility of single atoms. *Science* **168**, 1338–1340 (1970).
- Barkholtz, H. M. et al. Lithium assisted “dissolution–alloying” synthesis of nanoalloys from individual bulk metals. *Chem. Mater.* **28**, 2267–2277 (2016).
- Besenbacher, F. et al. Design of a surface alloy catalyst for steam reforming. *Science* **279**, 1913–1915 (1998).
- Kornblum, L., Shekhter, P., Slovatzky, Y., Amouyal, Y. & Eizenberg, M. Composition and crystallography dependence of the work function: experiment and calculations of Pt-Al alloys. *Phys. Rev. B* **86**, 125305 (2012).
- Xue, M. et al. Changes in surface morphology and work function caused by corrosion in aluminum alloys. *J. Phys. Chem. Solids* **73**, 781–787 (2012).
- Eberhardt, W. et al. Photoemission from mass-selected monodispersed Pt clusters. *Phys. Rev. Lett.* **64**, 780–783 (1990).
- Han, X. et al. Hydrogenated uniform Pt clusters supported on porous CaMnO₃ as a bifunctional electrocatalyst for enhanced oxygen reduction and evolution. *Adv. Mater.* **26**, 2047–2051 (2014).
- Lee, C., Yang, C., Liu, C., Liu, Z. & Ye, J. Pt-coated Pd nanocubes as catalysts for alkaline oxygen reduction activity. *J. Power Sources* **268**, 712–717 (2014).
- Wang, L. et al. Co@Pt core@shell nanoparticles encapsulated in porous carbon derived from zeolitic imidazolate framework 67 for oxygen electroreduction in alkaline media. *J. Power Sources* **343**, 458–466 (2017).
- Liu, S. et al. One-pot synthesis of Pd@PtNi core-shell nanoflowers supported on the multi-walled carbon nanotubes with boosting activity toward oxygen reduction in alkaline electrolyte. *J. Power Sources* **365**, 26–33 (2017).
- Rahul, R., Singh, R. K. & Neergat, M. Effect of oxidative heat-treatment on electrochemical properties and oxygen reduction reaction (ORR) activity of Pd-Co alloy catalysts. *J. Electroanal. Chem.* **712**, 223–229 (2014).
- Singh, R. K., Ramesh, R., Devivaraprasad, R., Chakraborty, A. & Neergat, M. Investigation on the reduction of the oxides of Pd and graphite in alkaline medium and the simultaneous evolution of oxygen reduction reaction and peroxide generation features. *Electrochim. Acta* **191**, 81–89 (2016).
- Wells, P. P. et al. Preparation, structure, and stability of Pt and Pd monolayer modified Pd and Pt electrocatalysts. *Phys. Chem. Chem. Phys.* **11**, 5773–5781 (2009).
- Wang, R. et al. Dispersing Pt atoms onto nanoporous gold for high performance direct formic acid fuel cells. *Chem. Sci.* **5**, 403–409 (2014).
- Yang, T. et al. Surface-limited synthesis of Pt nanocluster decorated Pd hierarchical structures with enhanced electrocatalytic activity toward oxygen reduction reaction. *ACS Appl. Mater. Interfaces* **7**, 17162–17170 (2015).
- Kresse, G. & Hafner, J. Ab initio molecular dynamics for liquid metals. *Phys. Rev. B* **47**, 558–561 (1993).
- Kresse, G. & Hafner, J. Ab initio molecular-dynamics simulation of the liquidmetal–amorphous-semiconductor transition in germanium. *Phys. Rev. B* **49**, 14251–14269 (1994).
- Kresse, G. & Furthmüller, J. Efficient iterative schemes for ab initio total-energy calculations using a plane-wave basis set. *Phys. Rev. B* **54**, 11169–11186 (1996).
- Kresse, G. & Furthmüller, J. Efficiency of ab-initio total energy calculations for metals and semiconductors using a plane-wave basis set. *Comput. Mater. Sci.* **6**, 15–50 (1996).
- Bloch, P. E. Projector augmented-wave method. *Phys. Rev. B* **50**, 17953–17979 (1994).
- Kresse, G. & Joubert, D. From ultrasoft pseudopotentials to the projector augmented-wave method. *Phys. Rev. B* **59**, 1758–1775 (1999).
- Perdew, J. P., Burke, K. & Ernzerhof, M. Generalized gradient approximation made simple. *Phys. Rev. Lett.* **77**, 3865–3868 (1996).

Acknowledgements

This work was supported by the Ministry of Science and Technology, Taiwan (MOST 106-2112-M-007-016-MY3 and MOST 105-3113-E-006-019-CC2) and the National Science Foundation (grant numbers DMR-1506535 and CBET-1159240). We would like to acknowledge the help from the National Synchrotron Radiation Research Center (NSRRC), Hsinchu, Taiwan, for various synchrotron-based measurements. Transmission electron microscopy was carried out at the Irvine Materials Research Institute (IMRI), University of California, Irvine.

Author contributions

T.-Y.C.: Conceived the experiments and designed the synthetic procedures of the ternary nanocatalyst. S.D. and X.P.: Performed the electron microscopy characterization. T.-Y.C.: Performed the XAS, XPS, XRD, and UPS experiments. J.-P.C. and A.H.: Carried out the DFT calculation and interpreted the results. Y.-Y.H.: Prepared various catalyst samples and performed the electrochemical measurements. S.D., K.-W.W., and T.-Y.C.: Analyzed the experimental data. S.D. and T.-Y.C.: Wrote the manuscript and prepared the figures. All authors participated in discussions and knew implications of the work.

Additional information

Supplementary Information accompanies this paper at <https://doi.org/10.1038/s41467-019-08323-w>.

Competing interests: The authors declare no competing interests.

Reprints and permission information is available online at <http://npg.nature.com/reprintsandpermissions/>

Journal peer review information: *Nature Communications* thanks Chen-Hao Wang and the other anonymous reviewers for their contribution to the peer review of this work.

Publisher's note: Springer Nature remains neutral with regard to jurisdictional claims in published maps and institutional affiliations.



Open Access This article is licensed under a Creative Commons Attribution 4.0 International License, which permits use, sharing, adaptation, distribution and reproduction in any medium or format, as long as you give appropriate credit to the original author(s) and the source, provide a link to the Creative Commons license, and indicate if changes were made. The images or other third party material in this article are included in the article's Creative Commons license, unless indicated otherwise in a credit line to the material. If material is not included in the article's Creative Commons license and your intended use is not permitted by statutory regulation or exceeds the permitted use, you will need to obtain permission directly from the copyright holder. To view a copy of this license, visit <http://creativecommons.org/licenses/by/4.0/>.

© The Author(s) 2019