

UC Berkeley

UC Berkeley Previously Published Works

Title

Near-linear response of mean monsoon strength to a broad range of radiative forcings

Permalink

<https://escholarship.org/uc/item/9gn9z9m5>

Journal

Proceedings of the National Academy of Sciences of the United States of America, 113(6)

ISSN

0027-8424

Authors

Boos, William R
Storelvmo, Trude

Publication Date

2016-02-09

DOI

10.1073/pnas.1517143113

Peer reviewed

[Skip to main content](#)

-
-
-
-
-

University of California Digital Library



• [Log in](#)

• [Log out](#)

• [My Cart](#)

Proceedings of the
National Academy of
the United States

Search for this keyword
Search

[Advanced Search](#)

-
-
-
-
-
-

[Articles](#)

NEW RESEARCH IN

Physical Sciences
Social Sciences
Biological Sciences

Near-linear response of mean monsoon strength to a broad range of radiative forcings

William R. Boos and Trude Storelvmo

PNAS February 9, 2016 113 (6) 1510-1515; published ahead of print January 25, 2016 <https://doi.org/10.1073/pnas.1517143113>

1. Edited by Robert E. Dickinson, The University of Texas at Austin, Austin, TX, and approved December 9, 2015 (received for review August 27, 2015)

This article has a reply. Please see:

- [Abrupt monsoon transitions as seen in paleorecords can be explained by moisture-advection feedback](#)
- [Article](#)
- [Figures & SI](#)
- [Authors & Info](#)
- [PDF](#)

Significance

Previous studies have argued that monsoons, which are continental-scale atmospheric circulations that deliver water to billions of people, will abruptly shut down when aerosol emissions, land use change, or greenhouse gas concentrations reach a critical threshold. Here it is shown that the theory used to predict such “tipping points” omits a dominant term in the equations of motion, and that both a corrected theory and an ensemble of global climate model simulations exhibit no abrupt shift in monsoon strength in response to large changes in various forcings. Therefore, although monsoons are expected to change in response to anthropogenic forcings, there is no reason to expect an abrupt shift into a dry regime in the next century or two.

Abstract

Theoretical models have been used to argue that seasonal mean monsoons will shift abruptly and discontinuously from wet to dry stable states as their radiative forcings pass a critical threshold, sometimes referred to as a “tipping point.” Further support for a strongly nonlinear response of monsoons to radiative forcings is found in the seasonal onset of the South Asian summer monsoon, which is abrupt compared with the annual cycle of insolation. Here it is shown that the seasonal mean strength of monsoons instead exhibits a nearly linear dependence on a wide range of radiative forcings. First, a previous theory that predicted a discontinuous, threshold response is shown to omit a dominant stabilizing term in the equations of motion; a corrected theory predicts a continuous and nearly linear response of seasonal mean monsoon strength to forcings. A comprehensive global climate model is then used to show that the seasonal mean South Asian monsoon exhibits a near-linear dependence on a wide range of isolated greenhouse gas, aerosol, and surface albedo forcings. This model reproduces the observed abrupt seasonal onset of the South Asian monsoon but produces a near-linear response of the mean monsoon by changing the duration of the summer circulation and the latitude of that circulation’s ascent branch. Thus, neither a physically correct theoretical model nor a comprehensive climate model support the idea that seasonal mean

monsoons will undergo abrupt, nonlinear shifts in response to changes in greenhouse gas concentrations, aerosol emissions, or land surface albedo.

- [monsoons](#)
 - [tropical climate](#)
 - [tipping points](#)
-

Monsoons deliver water to billions of people, so catastrophe would likely result if a gradual and small change in a forcing produced a comparatively abrupt and large change in monsoon strength. Previous studies ([1](#), [2](#)) used theoretical models to argue that monsoons will undergo exactly this sort of abrupt transition if anthropogenic or natural forcings exceed a critical threshold, which they referred to as a “tipping point” ([3](#)). Changes in land use or atmospheric aerosols sufficient to increase local top-of-atmosphere albedo to 0.5 have been predicted to cause a shift in the Indian summer monsoon from its current wet state to a dry state ([1](#)). The idea that anthropogenic climate forcings might produce an abrupt shutdown of some monsoons has become prominent ([3](#), [4](#)), even though some argue that this is unlikely to occur in the next century ([5](#)).

Paleoclimate records contain abundant evidence for abrupt changes in various measures of monsoon strength ([6](#), [7](#)). However, such records typically measure variations at a particular location and so may not distinguish between a nonlinear response of the entire monsoon and a more gradual, linear shift of a spatial pattern with sharp horizontal gradients. It is also unclear whether mechanisms that govern monsoon changes on orbital to geological time scales are relevant for the response to anthropogenic forcings. However, even if proxy records of past monsoons are ambiguous, the modern seasonal cycle contains evidence for the abrupt response of monsoons to a radiative forcing: South Asian summer monsoon onset occurs more rapidly than can be explained by a linear response to the annual cycle of insolation ([8](#), [9](#)). Although the cause of this nonlinear seasonal evolution is the subject of active research ([10](#), [11](#)), it seems plausible that the same mechanism might produce an abrupt response of the seasonal mean monsoon to an imposed seasonal mean forcing.

These results motivate our examination of how monsoon strength scales with a range of forcings. In particular, we use a simple energetic theory and an ensemble of global climate model (GCM) integrations to determine whether the summer mean strength of tropical monsoons will change discontinuously in response to a large range of radiative forcings.

Analytical Results

A simple model of a monsoon is obtained by assuming thermally direct flow from an ocean toward a tropical continent,

$$v = \kappa \epsilon \partial T / \partial y \quad v = \kappa \epsilon \partial T / \partial y$$

[1] where the wind v is positive for low-level flow from ocean to land, T is tropospheric temperature, κ is the ratio of the gas constant to the specific heat of air, and ϵ is a frictional damping constant. Steady-state conservation equations for T and humidity q , which represent anomalies relative to a tropical mean background state, are used to couple v to the energy sources provided by surface sensible heat flux H , surface evaporation E , and the atmospheric radiative flux convergence R ,

$$a_T v \partial T / \partial y - M_s \partial v / \partial y = P + R + H \quad a_T v \partial T / \partial y - M_s \partial v / \partial y = P + R + H$$

[2]

$$a_q v \partial q / \partial y + M_q \partial v / \partial y = -P + E \quad a_q v \partial q / \partial y + M_q \partial v / \partial y = -P + E.$$

[3] Here M_s is the dry thermal stratification and the term $M_s \partial v / \partial y$ in [Eq. 2](#) represents adiabatic cooling in the circulation's rising branch (where low-level air converges). This system represents the state of the full depth of the troposphere, with T the temperature anomaly of the entire tropospheric column and with winds changing sign in the midtroposphere (i.e., upper-tropospheric flow is given by $-v$). Both T and q have units of energy, having absorbed constants for the specific heat and latent heat of vaporization, respectively. The moisture stratification M_q appears in the term representing low-level moisture convergence ($M_q \partial v / \partial y$), which, in the tropics, is the leading term that balances removal of water by precipitation P . The constants a_T and a_q express the efficiency with which horizontal advection alters T and q , respectively. A common, simple closure for precipitation has P increase with column moisture and decrease as rising free-tropospheric temperatures make the column more stable to moist convection,

$$P = q - T \tau^* \mathcal{H}(q - T) \quad P = q - T \tau^* \mathcal{H}(q - T).$$

[4] Here τ^* is the time scale over which moist convection relaxes the troposphere toward a moist adiabatic state in which $q = T$; when $T > q$, the column is sufficiently warm and dry so as to be stable to moist convection. The Heaviside function \mathcal{H} ensures nonnegative precipitation. This system is identical to the nonrotating equations for the first baroclinic mode of the tropical troposphere used in the Quasi-Equilibrium Tropical Circulation Model (QTCM), which numerous studies have used to advance understanding of monsoons ([12](#), [13](#)). We neglect rotation, for consistency with previous theoretical models used to argue for the existence of monsoon tipping points ([2](#)).

We combine [Eqs. 1–4](#) into a cubic polynomial in v and solve it analytically using a standard set of parameter values ([12](#)). The solution (see [Materials and Methods](#) and [SI Appendix](#) for methodological details) shows that when a net source of energy is supplied to the atmosphere over the monsoonal continent so that $Q = E + H + R > 0$, low-level winds blow from ocean to land, where precipitating ascent occurs ($v > 0$ and $P > 0$, [Fig. 1A](#)). The circulation exports energy from its ascending branch to balance the imposed energy source Q ; the low-level import of moisture is more than compensated for, in the vertically integrated energy budget, by the export of dry static energy by upper-tropospheric divergent flow. This compensation is captured by the fact

that the gross moist stability, $M_s - M_q$, is positive but much less than the dry stability, M_s , consistent with studies of the energetics of large-scale tropical flow (14, 15). When $Q < 0$, the circulation reverses ($v < 0$) and precipitation is suppressed in the continental subsiding flow ($P = 0$), typical of winter conditions in monsoon regions.

- [Download figure](#)
- [Open in new tab](#)
- [Download powerpoint](#)

Fig. 1.

Response of analytical model of a monsoon to forcing variations. (A) Low-level landward wind (red, meters per second) and land precipitation (solid blue, millimeters per day) as a function of the vertically integrated atmospheric energy source Q for our standard analytical model. Thick dashed line shows precipitation when the static stability is artificially set to zero, with the magenta square marking the critical value of Q below which no solution exists and the thin dashed blue line showing the nonphysical solution. (B) Annual cycle of radiative forcing (red) and precipitation (blue) when the standard model is used to represent the daily mean response to daily mean Q . Solid lines are for a sinusoidal forcing with amplitude $100 \text{ W}\cdot\text{m}^{-2}$ and zero mean, and dashed lines are for the same forcing with a $-40 \text{ W}\cdot\text{m}^{-2}$ offset. Time is in radians with spring equinox at zero. (C) Precipitation as a function of Q with both averaged over the half of the year centered on the peak Q and the offset in Q varied from $-120 \text{ W}\cdot\text{m}^{-2}$ to $60 \text{ W}\cdot\text{m}^{-2}$.

As Q becomes positive, precipitation smoothly increases from zero. There are no discontinuities in P or v as Q is varied, and their response to Q is only slightly nonlinear for $Q > 0$. The sensitivities of v and P to Q change as Q passes through zero, because, in subsiding regions, the diabatic heat source of precipitation does not offset adiabatic heating due to vertical motion (i.e., precipitation is nonnegative). There is no critical value of Q at which P and v change discontinuously, and thus no threshold or tipping point at which the monsoon could be argued to abruptly shut down.

In their model of monsoon tipping points, Levermann et al. (2)

set M_s in Eq. 2 to zero, thereby neglecting the adiabatic cooling of ascending air. The transport of moisture from ocean to land then provides an energy source that effectively makes the gross moist stability negative, and the circulation imports energy into the ascending column to balance the net divergence of radiative energy. Levermann et al. (2) and related studies (1, 4) stated that this import of moisture provides a “moisture advection feedback” that causes abrupt shifts of monsoons between wet and dry states. They also notably omitted the term $M_q \partial_y v$ in Eq. 3, which represents horizontal convergence of moisture. Moisture convergence and adiabatic cooling are widely acknowledged to be leading terms in the moisture and thermodynamic equations, respectively, by many theoretical and observational studies over the past 50 y (14, 16–19); these two terms do not simply cancel, and neglecting them in any model of a monsoon is not a matter of theoretical preference but a fundamental error.

We modify our analytical model to demonstrate that the moisture advection feedback and the threshold behavior it permits are artifacts of neglecting the static stability. We set $M_s = 0$ and change the sign of $\partial_y T$ so that the associated advection represents temperature advection due only to lower tropospheric winds, consistent with Levermann et al. (2). The latter change is minor, however, and the key change is setting $M_s = 0$ (see discussion in SI Appendix). With these two modified parameters, precipitating monsoonal ascent occurs for all $Q > -61.3 \text{ W}\cdot\text{m}^{-2}$ (dashed blue curve in Fig. 1A). The precipitating monsoon circulation would abruptly cease (i.e., no solutions exist) if atmospheric aerosols, land use change, or some other forcing caused Q to become more negative than this critical threshold. However, this only occurs when the static stability is erroneously assumed to be zero and the monsoon circulation thus becomes energetically indirect, converging energy into its ascending branch. Observational estimates of the energy budget are consistent with our assertion that $Q > 0$ in summer monsoon regions and that monsoons export energy from their ascending branches (20).

Global Climate Model Results

Although Eqs. 1–4 are a more complete model than that used in previous studies arguing for the existence of tipping points, this system neglects planetary rotation, nonlinear momentum advection, and the wind dependence of ocean surface evaporation, each of which has been argued to cause the abrupt seasonal onset of the South Asian monsoon (9, 10). Instead of adding representations of these processes to our theoretical model, we integrate the coupled ocean–atmosphere Community Earth System Model (CESM), at a

nominal 1° horizontal resolution, to determine whether seasonal mean monsoon strength exhibits a threshold response to large variations in four types of forcings (see [Materials and Methods](#) for details). In particular, we vary greenhouse gas concentrations, anthropogenic sulfate aerosol emissions, and anthropogenic black carbon (BC) aerosol emissions independently from 0.25 to 16 times present-day values in three series of integrations. In a fourth set of integrations, we vary the land surface albedo of continental India from zero to unity (see summary in [SI Appendix, Table S2](#)).

The summer mean strength of the South Asian monsoon exhibits no discontinuous or abrupt response to variations in any of these forcings. As the surface albedo of continental India is increased from zero to unity, South Asian monsoon precipitation and circulation strength both decrease near linearly as a function of albedo [[Fig. 2](#); the meridional wind average used to define the circulation strength is based on an existing monsoon index ([21](#)) and is a good analog for v in the analytical model]. Increased albedo weakens precipitating ascent and low-level monsoon westerlies ([Fig. 3B](#)) because land absorbs less shortwave radiation and thus emits less enthalpy into the atmospheric column. This reduces Q in a basic state where $Q > 0$, so P decreases as in our analytical model. Although our albedo forcing is idealized and not intended to represent realistic changes in land use, this nearly linear response disproves the idea that the South Asian monsoon will abruptly switch into a dry state as its local energy source is reduced. These albedo variations span the maximum possible range and produce variations in Q larger than any that might be produced by plausible changes in land use or atmospheric aerosols; they far exceed the value of 0.5 at which monsoon shutdown was predicted to occur by previous studies ([1](#), [3](#)). Although we only changed the albedo of nonelevated parts of India, it has been shown that South Asian monsoon strength is more sensitive to surface heat flux perturbations in this region than in the Tibetan Plateau and Himalayas ([22](#), [23](#)). Additionally, even though previous studies of tipping points did not argue for hysteresis in monsoons, we note that there is no evidence for hysteresis as albedo changes in time (see [SI Appendix](#)).

- [Download figure](#)
- [Open in new tab](#)
- [Download powerpoint](#)

Fig. 2.

Response of monsoon (A) precipitation and (B) circulation (i.e., meridional wind) to an ensemble of forcings in the GCM. Black line is for albedo forcings, with India's surface albedo noted on the top abscissa. Dashed line is for CO₂ forcings, and thin red and green lines are for sulfate and BC emission forcings, with the scaling factor for CO₂ concentrations or aerosol emissions shown on the bottom abscissa. Vertical bars show the 95% confidence interval for the mean,

estimated by 2,000 iterations of a bootstrap. Precipitation was averaged from May through September over the blue box shown in [Fig. 3A](#), and the circulation is a slightly modified form of an existing “southerly shear” index ([21](#)) obtained by averaging the meridional wind difference between 850 hPa and 200 hPa over regions of strong low-level northward monsoon flow: (85°E–100°E, 15°N–30°N) and (30°E–55°E, 15°S–0°N).

- [Download figure](#)
- [Open in new tab](#)
- [Download powerpoint](#)

Fig. 3.

GCM anomalies of precipitation (shading, millimeters per day), 850-hPa horizontal wind (vectors), and vertically integrated atmospheric energy source Q (contours, magenta positive and green negative) produced by select forcings. Plots only show precipitation and Q anomalies significant at the 5% level and wind anomalies with a zonal or meridional component significant at the 5% level, as estimated by a Student t test. Panels show differences between integrations with (A) 16× and 1× present-day CO_2 , (B) India’s surface albedo of 0.8 and the default land surface albedo, (C) 16× and 1× modern sulfate emissions, and (D) 16× and 1× modern BC aerosol emissions. All quantities are averaged May–September. Contour interval for Q anomalies is 50 $\text{W}\cdot\text{m}^{-2}$ in A and B and 10 $\cdot\text{W m}^{-2}$ in C and D; note the change in color scale and reference vector between A and B and C and D.

Enhanced CO_2 concentrations cause increased precipitation over all of South Asia in this GCM, together with a weakening and northward shift of low-level westerlies (**Fig. 3A**). Because CO_2 is well mixed, its variations provide a more spatially uniform forcing than albedo changes. Thus, although albedo can be thought to primarily alter Q , CO_2 changes leave Q relatively unchanged and modify $M_s M_s$ and $M_q M_q$ through the temperature dependence of those variables. A horizontally uniform increase in temperature at fixed relative humidity will increase $M_q M_q$ following Clausius–Clapeyron; $M_s M_s$ also increases as the troposphere moves to a warmer moist adiabat and as deep convection reaches higher altitudes. Some studies have found that $M_s M_s$, $M_q M_q$, and the quantity $M_s - M_q$ all increase in GCMs as the tropics warm (**24**), which, for negligible change in Q , requires a slowing of the circulation and an increase in rainfall. This is exactly what is seen in our simulations. Although monsoon precipitation increases faster than linearly as a function of $\log_2 \log_2(\text{CO}_2)$, it scales near linearly until CO_2 concentrations reach $4 \times$ modern values. Circulation strength scales linearly over almost the entire range of CO_2 forcings, with some evidence for a saturation of circulation strength at very low CO_2 concentrations.

The monsoon exhibits a comparatively weak response to 64-fold variations in Asian anthropogenic emissions of either BC or sulfate aerosols and their precursors (thin green and red lines in **Fig. 2**). The weakness of this change may seem surprising given that previous studies argued that anthropogenic aerosols have reduced South Asian rainfall (**25, 26**). However, our strong aerosol forcings produce radiation and precipitation changes comparable in magnitude to those of previous studies (see *SI Appendix*). The full range of our albedo and CO_2 forcings is simply much larger than any expected to arise from anthropogenic causes, whereas our aerosol changes are closer to the observed difference between preindustrial and modern periods; we plot all of these responses on the same axes only for convenience in assessing whether thresholds exist, not because of any expectation that the magnitude of the responses should be similar.

Major features of the response to aerosols can also be understood in terms of our analytical model. Enhanced burdens of BC aerosol (e.g., absorbing soot) increase Q by increasing the absorption of shortwave radiation, which strengthens the monsoon. When anthropogenic BC emissions are increased 16-fold compared with modern values, Q increases by $10\text{--}20 \text{ W}\cdot\text{m}^{-2}$ over the Indo-Gangetic plain, Bay of Bengal, and East Asia (**Fig. 3D**), the regions where BC burden rose most strongly (see *SI Appendix*). Low-level cyclonic flow intensifies around this region of enhanced Q . The statistically significant precipitation increase is much smaller in horizontal extent than the change in Q , consistent with the fact that there is more precipitable water over the Bay of Bengal than over East Asia; the vertical structure of BC heating may also suppress precipitation. Precipitation and Q are reduced over the Arabian Sea, and that Q decrease comprises enhanced outgoing longwave radiation resulting from reduced high-level cloudiness, which might in turn be caused by BC stabilization

of the atmospheric column. There is also reduction in Arabian Sea sea surface temperature (SST), so BC aerosols might alternatively weaken the monsoon by reducing the cross-equatorial SST gradient (25, 27), but cross-equatorial flow and low-level westerlies actually strengthen in our GCM. Sea salt aerosol also increases over the Arabian Sea, presumably because of the intensification of the Somali jet, which may also contribute to the rain and cloud response.

Increased sulfate aerosol produces changes that are of similar magnitude but more spatially uniform than those induced by BC aerosol. A 16-fold increase in sulfate emissions reduces rainfall by 1–2 mm·d⁻¹ over large parts of the North Indian Ocean and South Asia (Fig. 3C). However, sulfate produces a change in Q (Fig. 3C) that is much weaker and less horizontally extensive than that produced by BC. Sulfate aerosol also produces only a slight weakening of monsoon winds. All of this seems to occur because sulfate acts primarily through a tropics-wide cooling and associated reduction in precipitable water, which, in our analytical model, would reduce P by reducing $M_q M_q$ rather than by changing Q . Like CO₂, sulfate aerosol may thus act primarily via spatially homogeneous temperature change, whereas BC aerosol and land surface albedo act primarily to alter horizontal gradients in Q . To our knowledge, this aspect of the response to BC vs. sulfate aerosol has not been discussed and may complicate understanding of the response to realistic superpositions of sulfate and BC aerosol. For our present purpose, these are all side issues, with the main point being that no threshold response is seen in response to a large range of aerosol changes.

Response of Monsoon Duration and Location

Previous studies have argued that the mechanism responsible for the observed abrupt seasonal onset of the South Asian monsoon might produce an abrupt response to forcings that vary on geological time scales (28). In contrast, other work has shown that atmospheric dynamics alone produce only a linear scaling of African rainfall in response to orbital forcings in one GCM (29). In any case, it seems worth exploring why the largest albedo forcings do not produce a total monsoon shutdown in our GCM, because those forcings might be expected to reduce absorbed shortwave radiation below what is needed to achieve the seasonal monsoon onset.

Our control GCM integration reproduces the observed abrupt seasonal onset, as indicated by a composite annual cycle of Somali jet speed (Fig. 4A), which has been used in previous studies as a measure of onset and mass flux in the South Asian monsoon (30, 31). The jet speed increases from its winter to its summer mean value on a time scale of 1 wk, considerably faster than a linear response to the insolation forcing (9). Equally rapid intensification occurs in the integration where India's surface albedo was increased to 0.8, but is delayed by 1 mo compared with the control. The transition back to the winter state also occurs earlier, but there is little change in the extreme summer and winter values. The monsoon thus responds to the albedo forcing primarily by altering its duration rather than its intensity. Surface albedo increases also modify the

spatial structure of the peak summer monsoon, reducing ascent over continental India and increasing it over the near-equatorial Indian Ocean during the 20 d following onset (**Fig. 4B**). The region of nonlinear atmospheric dynamics also shifts toward the equator in response to increased surface albedo (see [SI Appendix](#)). Thus, abrupt seasonal onset and nonlinear atmospheric dynamics still occur for even the strongest forcings; the response to large increases in albedo includes a reduction in monsoon duration and an equatorward shift of the ascending, nonlinear branch of the circulation.

- [Download figure](#)
- [Open in new tab](#)
- [Download powerpoint](#)

Fig. 4.

Response of monsoon duration and location to albedo forcing in the GCM integration with default albedo (solid lines) and with the land surface albedo of continental India set to 0.8 (dashed lines). (A) Composite annual cycle of Somali jet speed, averaged over 5 y relative to the date on which jet onset occurs (see [Materials and Methods](#)). Small vertical lines on the bottom axis indicate dates over which the quantities in B were averaged. (B) The 500-hPa vertical velocity (blue) averaged 50°E–90°E and over 5 y during the 20 d after which jet onset occurs in each year.

We now modify our analytical model to account for variable monsoon duration. We treat [Eqs. 1–4](#) as a model for the daily mean response to daily mean Q , and solve for P as the radiative forcing goes through a seasonal cycle. As expected, $P=0$ in winter then increases with Q for $Q>0$ in a rectified oscillation ([Fig. 1B](#)). When we apply a constant offset to Q , this changes the amount of time $Q>0$ and thus alters the duration of the precipitating period of the year. By averaging both Q and P over the 6-mo period centered on the date of peak Q to obtain a “summer mean,” we produce a graph of summer mean P as a function of summer mean Q (with the mean Q controlled via its time-invariant offset). This shows that (i) summer mean P first becomes nonzero when summer mean Q is negative because of the rectification of the forcing, (ii) the sensitivity of summer mean P to summer mean Q is different, in both magnitude and functional form, from the sensitivity of P to Q obtained when [Eqs. 1–4](#) are taken to represent the summer mean state, and (iii) the increase of P from zero is nearly linear, and P exhibits no discontinuous changes. Thus, theoretical models of seasonal mean monsoons must account for changes in the duration of the summer circulation to properly represent the sensitivity to summer mean forcings.

Summary and Discussion

Few studies have assessed how seasonal mean monsoon strength will scale as radiative forcings vary over a large range, so it has perhaps seemed reasonable to believe the assertion that monsoons will shift discontinuously between wet and dry states as their forcing passes a critical threshold ([1](#), [3](#), [4](#)). Here we showed that the theory on which that assertion was based ([2](#)) neglected the static stability of the troposphere, a dominant, stabilizing term in the equations of motion that eliminates the bifurcation associated with the threshold response. We also showed that a comprehensive GCM fails to produce a threshold response to large changes in several types of forcings. That GCM contains representations of many nonlinear processes not included in our analytical model and successfully simulates the abrupt seasonal onset of the South Asian summer monsoon. However, it produces seasonal mean responses to aerosol, greenhouse gas, and albedo forcings qualitatively consistent with our much simpler analytical model. The GCM results furthermore show that it is overly simplistic to think of monsoons as circulations that respond to forcings only through variations in intensity; failing to account for changes in monsoon

duration can even lead to erroneous predictions of nonlinear changes in seasonal mean strength.

Forcings stronger than those used here might entirely eliminate the monsoon, but, because such a shutdown was not produced even by increasing the surface albedo of India to unity, this would seem to require a more horizontally extensive continental forcing or large modification of SSTs or the extratropical state. Such large forcings may occur on orbital or geological time scales, and perhaps are responsible for the abrupt changes in monsoon strength in past millenia inferred from proxy records (7). Alternatively, abrupt changes in paleo monsoons might require large changes in vegetation cover (e.g., greening of the Sahara) (32) or continental ice sheets that do not operate on the decadal time scales considered here.

Other simulations of next-century climate have produced evidence for a linear relationship between trends in regional precipitation and trends in tropical mean temperature (33). In addition, the South Asian monsoon exhibited a nearly linear response to large changes in elevated topography in other GCM simulations (23). Thus, outside of a theory that omitted a dominant term in the equations of motion, we know of no evidence supporting the idea that monsoons will shut down in response to anthropogenic forcings. Monsoons may have a strong response to anthropogenic forcings, but current theory and numerical models indicate that this response will be nearly linear.

Materials and Methods

A full derivation of the analytical model is provided in the description of the QTCM (12). The parameters used are the same as in QTCM1 v2.3 and are listed in [SI Appendix, Table S1](#). Horizontal derivatives are approximated as differences between values over land and those over ocean, divided by an assumed horizontal length scale of 1,000 km. We changed the sign of v from that used in the original QTCM so that it represents horizontal wind in the lower instead of upper troposphere. The oceanic value of q is assumed to be $5 \text{ g}\cdot\text{kg}^{-1}$ moister than the tropical mean profile about which the model's vertical profiles are expanded to first order, and the oceanic value of T is set equal to q so that the oceanic atmosphere is convectively neutral. These choices are consistent with monsoons occurring in regions warmer than the tropical mean, but our results are not qualitatively sensitive to the oceanic values used for T and q . For consistency with Levermann et al. (2), we set E and H to zero and force the circulation through changes in R . This is physically unrealistic, but E , H , and R are all components of Q , and the omission of E and H makes no qualitative difference in our results, consistent with the analysis in Levermann et al. (2).

Our GCM (CESM) is produced by the National Center for Atmospheric Research and has fully coupled and interactive dynamical ocean, atmosphere, land, and sea ice models. These components are integrated at a nominal horizontal resolution of $0.9^\circ \times 1.25^\circ$ with 26 atmospheric vertical levels, using the B_2000

component set with 0.9x1.25_gx1v6 grid. Although CESM has bias relative to observations in its simulation of the South Asian monsoon (34), it is better than most GCMs in simulating the observed climatology of South Asian rainfall (35). It has been used in multiple studies of the effects of aerosols on the South Asian monsoon (36, 37). One series of integrations was conducted for each type of forcing, all using modern initial and boundary conditions but slightly different CESM versions. For the series in which CO₂ was varied, we used version 1.2.2 with Community Atmosphere Model version 4 (CAM4) physics, run for 100 model years with the last 70 used for analyses. The CO₂ mixing ratio was changed on the first time step of each integration to the given multiple of 367 ppm and fixed thereafter. For the series of runs in which aerosol emissions were varied, we used version 1.2.2 with CAM5 physics, run for 30 y with the last 25 analyzed. We used the aerosol scheme (Modal Aerosol Module version 3) that describes the aerosol size distribution with three log-normal modes (38). Only Asian anthropogenic emissions (from domestic, agricultural, and industrial activity) were changed, with BC and sulfate emissions perturbed separately. For the series in which land surface albedo was changed, we used version 1.0.4 with CAM4 physics, run for 30 y with the last 25 analyzed. In those runs, a time-invariant, horizontally homogeneous, broadband surface shortwave albedo was prescribed over nonelevated parts of India (green contours in Fig. 3B provide rough bounds). Specifically, albedo was modified for land with surface pressure higher than 910 hPa in these three regions: (60°E–90°E, 3°N–27.5°N), (60°E–73°E, 25°N–35°N), and the region 73°E–90°E that lies north of 25°N and south of a line between (73°E, 35°N) and (90°E, 25°N). Code containing the albedo modifications is available from the authors.

The speed of the Somali jet was defined following previous work (9). Composites of the annual cycle of jet speed were produced by averaging over 5 y relative to the onset date, with onset being the start of the first 6-d period, of each calendar year, in which the speed maintained a value more than 1 SD above its climatological annual mean.

Acknowledgments

W.R.B. thanks Tim Cronin, Ian Eisenman, Nadir Jeevanjee, and Tim Merlis for useful comments. W.R.B. was supported by National Science Foundation Grants AGS-1253222 and AGS-1515960 and Office of Naval Research Grant N000141512531. This work was supported in part by the Yale University Faculty of Arts and Sciences High Performance Computing Center.

Footnotes

- ¹To whom correspondence should be addressed.
Email: billboos@alum.mit.edu.
 - Author contributions: W.R.B. designed research, produced analytical results, and performed and analyzed GCM runs; W.R.B. and T.S. wrote the
-

paper; T.S. designed GCM aerosol emissions and interpreted aerosol response.

- The authors declare no conflict of interest.
- This article is a PNAS Direct Submission.
- Data deposition: Global climate model output used in this study is available from the authors.

-
- This article contains supporting information online at www.pnas.org/lookup/suppl/doi:10.1073/pnas.1517143113/-/DCSupplemental.

References

1. [↵](#)
 1. Zickfeld K,
 2. Knopf B,
 3. Petoukhov V,
 4. Schellnhuber H(2005) Is the Indian summer monsoon stable against global change? *Geophys Res Lett* **32**(15):L15707
. [UC-eLinksCrossRefGoogle Scholar](#)
2. [↵](#)
 1. Levermann A,
 2. Schewe J,
 3. Petoukhov V,
 4. Held H(2009) Basic mechanism for abrupt monsoon transitions. *Proc Natl Acad Sci USA* **106**(49):20572–20577
. [UC-eLinksAbstract/FREE Full TextGoogle Scholar](#)
3. [↵](#)
 1. Lenton TM, et al.(2008) Tipping elements in the Earth's climate system. *Proc Natl Acad Sci USA* **105**(6):1786–1793
. [UC-eLinksAbstract/FREE Full TextGoogle Scholar](#)
4. [↵](#)
 1. Schewe J,
 2. Levermann A(2012) A statistically predictive model for future monsoon failure in India. *Environ Res Lett* **7**(4):044023
. [UC-eLinksCrossRefGoogle Scholar](#)
5. [↵](#)

1. Collins M, et al.
(2013) in *Climate Change 2013: The Physical Science Basis. Contribution of Working Group I to the Fifth Assessment Report of the Intergovernmental Panel on Climate Change*, ed Stocker T, et al. (Cambridge Univ Press, Cambridge, UK)
.
[Google Scholar](#)
6. [↵](#)
 1. Overpeck JT,
 2. Cole JE(2006) Abrupt change in Earth's climate system. *Annu Rev Environ Resour* **31**:1-31
.
[UC-eLinksCrossRefGoogle Scholar](#)
7. [↵](#)
 1. McGee D, et al.(2013) The magnitude, timing and abruptness of changes in North African dust deposition over the last 20,000 yr. *Earth Planet Sci Lett* **371-372**:163-176
.
[UC-eLinksGoogle Scholar](#)
8. [↵](#)
 1. Murakami T,
 2. Chen LX,
 3. Xie A(1986) Relationship among seasonal cycles, low-frequency oscillations, and transient disturbances as revealed from outgoing longwave radiation data. *Mon Weather Rev* **114**(8):1456-1465
.
[UC-eLinksCrossRefGoogle Scholar](#)
9. [↵](#)
 1. Boos WR,
 2. Emanuel KA(2009) Annual intensification of the Somali jet in a quasi-equilibrium framework: Observational composites. *Q J R Meteorol Soc* **135**(639):319-335
.
[UC-eLinksCrossRefGoogle Scholar](#)
10. [↵](#)
 1. Bordoni S,
 2. Schneider T(2008) Monsoons as eddy-mediated regime transitions of the tropical overturning circulation. *Nat Geosci* **1**:515-519
.
[UC-eLinksCrossRefGoogle Scholar](#)
11. [↵](#)
 1. Shaw TA

(2014) On the role of planetary-scale waves in the abrupt seasonal transition of the Northern Hemisphere general circulation. *J Atmos Sci* **71**(5):1724–1746

.
[UC-eLinksCrossRefGoogle Scholar](#)

12. [↵](#)

1. Neelin JD,
2. Zeng N

(2000) A quasi-equilibrium tropical circulation model. Formulation. *J Atmos Sci* **57**(11):1741–1766

.
[UC-eLinksCrossRefGoogle Scholar](#)

13. [↵](#)

1. Neelin J

(2007) in *The Global Circulation of the Atmosphere*, eds Schneider T, Sobel AH (Princeton Univ Press, Princeton, NJ), pp 267–301

.
[Google Scholar](#)

14. [↵](#)

1. Neelin J,
2. Held I

(1987) Modeling tropical convergence based on the moist static energy budget. *Mon Weather Rev* **115**(1):3–12

.
[UC-eLinksCrossRefGoogle Scholar](#)

15. [↵](#)

1. Yu J,
2. Chou C,
3. Neelin J

(1998) Estimating the gross moist stability of the tropical atmosphere. *J Atmos Sci* **55**(8):1354–1372

.
[UC-eLinksCrossRefGoogle Scholar](#)

16. [↵](#)

1. Kuo HL

(1965) On formation and intensification of tropical cyclones through latent heat release by cumulus convection. *J Atmos Sci* **22**(1):40–63

.
[UC-eLinksCrossRefGoogle Scholar](#)

17. [↵](#)

1. Matsuno T

(1966) Quasi-geostrophic motions in the equatorial area. *J Meteorol Soc Jpn* **44**(1):25–43

.
[UC-eLinksGoogle Scholar](#)

18. [↵](#)

1. Webster PJ
(1981) Mechanisms determining the atmospheric response to sea surface temperature anomalies. J Atmos Sci **38**(3):554-571

.
[UC-eLinksCrossRefGoogle Scholar](#)

19. [↵](#)

1. Sobel A,
2. Bretherton C
(2000) Modeling tropical precipitation in a single column. J Clim **13**(24):4378-4392

.
[UC-eLinksCrossRefGoogle Scholar](#)

20. [↵](#)

1. Trenberth KE,
2. Fasullo JT
(2013) Regional energy and water cycles: Transports from ocean to land. J Clim **26**(20):7837-7851

.
[UC-eLinksCrossRefGoogle Scholar](#)

21. [↵](#)

1. Wang B,
2. Fan Z
(1999) Choice of South Asian summer monsoon indices. Bull Am Meteorol Soc **80**(4):629-638

.
[UC-eLinksCrossRefGoogle Scholar](#)

22. [↵](#)

1. Boos WR,
2. Kuang Z
(2013) Sensitivity of the South Asian monsoon to elevated and non-elevated heating. Sci Rep **3**:1192

.
[UC-eLinksPubMedGoogle Scholar](#)

23. [↵](#)

1. Ma D,
2. Boos W,
3. Kuang Z
(2014) Effects of orography and surface heat fluxes on the south Asian summer monsoon. J Clim **27**(17):6647-6659

.
[UC-eLinksCrossRefGoogle Scholar](#)

24. [↵](#)

1. Chou C,
2. Wu TC,

3. Tan PH
(2013) Changes in gross moist stability in the tropics under global warming. *Clim Dyn* **41**(9):2481–2496
. [UC-eLinksCrossRefGoogle Scholar](#)
25. [↵](#)
 1. Ramanathan V, et al.
(2005) Atmospheric brown clouds: Impacts on South Asian climate and hydrological cycle. *Proc Natl Acad Sci USA* **102**(15):5326–5333
. [UC-eLinksAbstract/FREE Full TextGoogle Scholar](#)
26. [↵](#)
 1. Bollasina MA,
2. Ming Y,
3. Ramaswamy V
(2011) Anthropogenic aerosols and the weakening of the South Asian summer monsoon. *Science* **334**(6055):502–505
. [UC-eLinksAbstract/FREE Full TextGoogle Scholar](#)
27. [↵](#)
 1. Chung C,
2. Ramanathan V
(2006) Weakening of north Indian SST gradients and the monsoon rainfall in India and the Sahel. *J Clim* **19**(10):2036–2045
. [UC-eLinksCrossRefGoogle Scholar](#)
28. [↵](#)
 1. Molnar P,
2. England P,
3. Martinod J
(1993) Mantle dynamics, uplift of the Tibetan Plateau, and the Indian monsoon. *Rev Geophys* **31**(4):357–396
. [UC-eLinksGoogle Scholar](#)
29. [↵](#)
 1. deMenocal P, et al.
(2000) Abrupt onset and termination of the African Humid Period: Rapid climate responses to gradual insolation forcing. *Quat Sci Rev* **19**:347–361
. [UC-eLinksCrossRefGoogle Scholar](#)
30. [↵](#)
 1. Krishnamurti TN,
2. Ardanuy P,
3. Ramanathan Y,

4. Pasch R
(1981) On the onset vortex of the summer monsoon. Mon Weather Rev **109**(2):344-363

.
[UC-eLinksCrossRefGoogle Scholar](#)

31. [↵](#)

1. Halpern D,
2. Woiceshyn PM
(1999) Onset of the Somali jet in the Arabian Sea during June 1997. J Geophys Res **104**(C8):18041-18046

.
[UC-eLinksCrossRefGoogle Scholar](#)

32. [↵](#)

1. Hales K,
2. Neelin JD,
3. Zeng N
(2006) Interaction of vegetation and atmospheric dynamical mechanisms in the mid-Holocene African monsoon. J Clim **19**(16):4105-4120

.
[UC-eLinksCrossRefGoogle Scholar](#)

33. [↵](#)

1. Neelin JD,
2. Münnich M,
3. Su H,
4. Meyerson JE,
5. Holloway CE
(2006) Tropical drying trends in global warming models and observations. Proc Natl Acad Sci USA **103**(16):6110-6115

.
[UC-eLinksAbstract/FREE Full TextGoogle Scholar](#)

34. [↵](#)

1. Boos WR,
2. Hurley JV
(2012) Thermodynamic bias in the multimodel mean boreal summer monsoon. J Clim **26**(7):2279-2287

.
[UC-eLinksGoogle Scholar](#)

35. [↵](#)

1. Sperber KR, et al.
(2013) The Asian summer monsoon: An intercomparison of CMIP5 vs. CMIP3 simulations of the late 20th century. Clim Dyn **41**(9):2711-2744

.
[UC-eLinksCrossRefGoogle Scholar](#)

36. [↵](#)

1. Vinoj V, et al.
(2014) Short-term modulation of Indian summer monsoon rainfall by West Asian dust. Nat Geosci **7**(4):308–313

.
[UC-eLinksCrossRefGoogle Scholar](#)

37. [↵](#)

1. Ganguly D,
2. Rasch PJ,
3. Wang H,
4. Yoon JH

(2012) Climate response of the South Asian monsoon system to anthropogenic aerosols. J Geophys Res **117**(D13):D13209

.
[UC-eLinksCrossRefGoogle Scholar](#)

38. [↵](#)

1. Liu X, et al.

(2012) Toward a minimal representation of aerosols in climate models: Description and evaluation in the Community Atmosphere Model CAM5. Geosci Model Dev **5**(3):709–739

.
[UC-eLinksCrossRefGoogle Scholar](#)

[View Abstract](#)

We recommend

1. [Shortwave and longwave radiative contributions to global warming under increasing CO₂.](#)
Aaron Donohoe et al., Proc Natl Acad Sci U S A
 2. [Weak response of oceanic dimethylsulfide to upper mixing shoaling induced by global warming.](#)
S M Vallina et al., Proc Natl Acad Sci U S A
 3. [Atmospheric brown clouds: impacts on South Asian climate and hydrological cycle.](#)
V Ramanathan et al., Proc Natl Acad Sci U S A
 4. [A scaling theory for the size distribution of emitted dust aerosols suggests climate models underestimate the size of the global dust cycle.](#)
Jasper F Kok, Proc Natl Acad Sci U S A
 5. [Efficient transport of tropospheric aerosol into the stratosphere via the Asian summer monsoon anticyclone](#)
Zhixuan Bai et al., Proc Natl Acad Sci U S A
1. [Monsoon meteorology](#)
Fein et al., AccessScience
 2. [Climatic prediction](#)
Fein et al., AccessScience

3. [Greenhouse- and orbital-forced climate extremes during the early Eocene](#)
Jeffrey T. Kiehl et al., Philosophical Transactions A
4. [Chemical Kinetic Data Evaluation for Atmospheric Chemistry and the IUPAC Kinetics Database](#)
Chemistry International
5. [Seasonal changes in the performance of a catch crop for mitigating diffuse agricultural pollution](#)
K. Kondo et al., Water Sci Technol

[Powered by](#)
[Previous](#)[Next](#)

[Back to top](#)

[Article Alerts](#)
[Email Article](#)
[Citation Tools](#)
[Permissions](#)
[Share](#)

-
-

-  [Mendeley](#)

More Articles of This Classification

Physical Sciences

- [Convolutional neural networks automate detection for tracking of submicron-scale particles in 2D and 3D](#)
- [Phase-transition-induced p-n junction in single halide perovskite nanowire](#)
- [Wettability in complex porous materials, the mixed-wet state, and its relationship to surface roughness](#)

[Show more](#)

Earth, Atmospheric, and Planetary Sciences

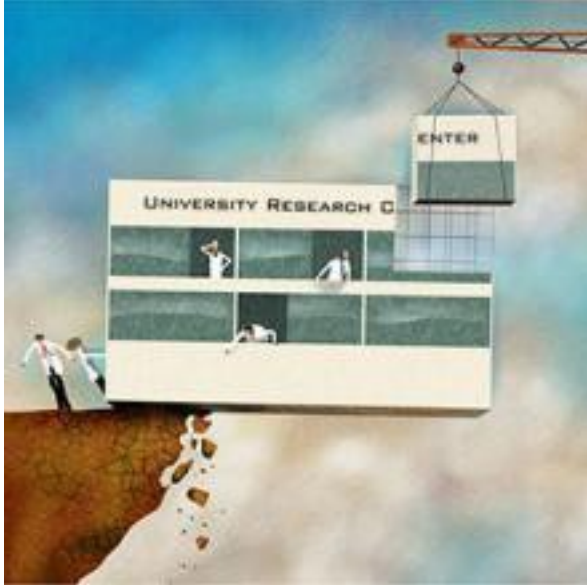
- [Multidecadally resolved polarity oscillations during a geomagnetic excursion](#)
- [Direct evidence of surface exposed water ice in the lunar polar regions](#)
- [Wettability in complex porous materials, the mixed-wet state, and its relationship to surface roughness](#)

[Show more](#)

Related Content
Cited by...

Similar Articles

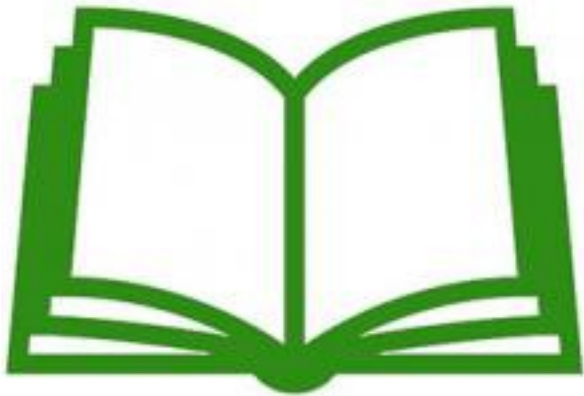
YOU MAY ALSO BE INTERESTED IN



Opinion: Expansion fever and soft money plague the biomedical research enterprise

Can academic institutions rescue biomedical research and the next generation of investigators? Yes, but the task will be hard and slow, and success will be piecemeal, not sweeping.

Image courtesy of Dave Cutler.



Journal Club: Highly-detailed solar wind observations may help explain sun's mysteries



Origins of Bread

Amaia Arranz-Otaegui describes the discovery of bread that far pre-dates agriculture.

[Listen](#)

[Past Podcasts](#)[Subscribe](#)



PNAS QnAs

PNAS QnAs with chemist and NAS foreign associate Lia Addadi



Earth's potential climate trajectories

In a Perspective, researchers explore the risk of crossing a planetary climate threshold due to Earth's intrinsic biogeophysical feedbacks that, notwithstanding reduction of human emissions, might lead to "Hothouse Earth" conditions. Image courtesy of Pixabay/Wikimedia.

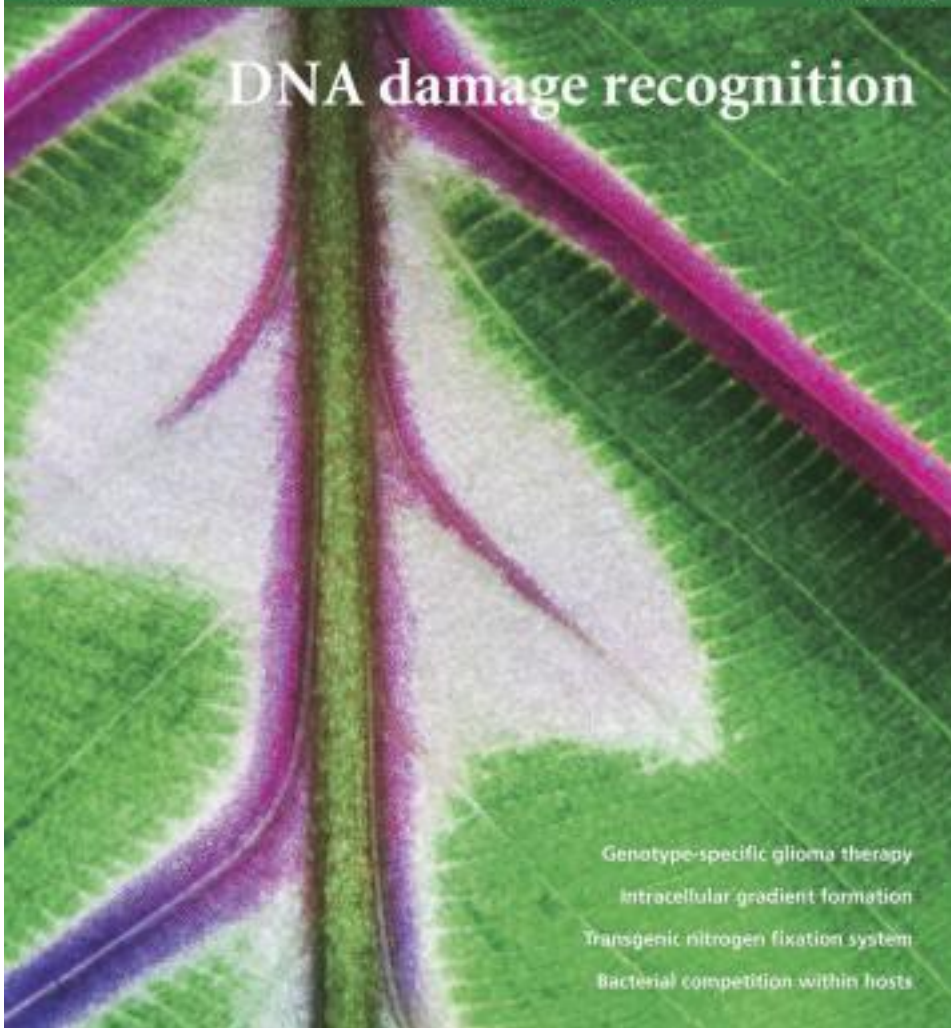
September 4, 2018 | vol. 115 | no. 36 | pp. 8841-9044

PNAS

Proceedings of the National Academy of Sciences of the United States of America

www.pnas.org

DNA damage recognition



Genotype-specific glioma therapy
Intracellular gradient formation
Transgenic nitrogen fixation system
Bacterial competition within hosts

[Current Issue](#)

[Submit](#)

Sign up for Article Alerts

Sign up

JUMP TO SECTION

- [Article](#)
 - o [Abstract](#)

- o [Analytical Results](#)
- o [Global Climate Model Results](#)
- o [Response of Monsoon Duration and Location](#)
- o [Summary and Discussion](#)
- o [Materials and Methods](#)
- o [Acknowledgments](#)
- o [Footnotes](#)
- o [References](#)
- [Figures & SI](#)
- [Authors & Info](#)
- [PDF](#)

PNAS

Powered by  HighWire

- [Submit Manuscript](#)
- [Twitter](#)
- [Facebook](#)
- [RSS Feeds](#)
- [Email Alerts](#)

Articles

- [Current Issue](#)
- [Latest Articles](#)
- [Archive](#)

PNAS Portals

- [Classics](#)
- [Front Matter](#)
- [Teaching Resources](#)
- [Anthropology](#)
- [Chemistry](#)
- [Physics](#)
- [Sustainability Science](#)

Information

- [Authors](#)
- [Reviewers](#)
- [Press](#)
- [Site Map](#)



[Feedback](#) [Privacy/Legal](#)

Copyright © 2018 National Academy of Sciences.

PDFHelp