

UCSF

UC San Francisco Previously Published Works

Title

Enhanced immune activation within the tumor microenvironment and circulation of female high-risk melanoma patients and improved survival with adjuvant CTLA4 blockade compared to males

Permalink

<https://escholarship.org/uc/item/9qq7m8rm>

Journal

Journal of Translational Medicine, 20(1)

ISSN

1479-5876

Authors

Saad, Mariam

Lee, Sandra J

Tan, Aik Choon

et al.

Publication Date

2022-12-01

DOI

10.1186/s12967-022-03450-3

Copyright Information

This work is made available under the terms of a Creative Commons Attribution License, available at <https://creativecommons.org/licenses/by/4.0/>


Peer reviewed

RESEARCH

Open Access



Enhanced immune activation within the tumor microenvironment and circulation of female high-risk melanoma patients and improved survival with adjuvant CTLA4 blockade compared to males

Mariam Saad¹, Sandra J. Lee², Aik Choon Tan⁹, Issam M. El Naqa¹⁰, F. Stephen Hodi³, Lisa H. Butterfield⁴, William A. LaFramboise⁵, Walter Storkus⁶, Arivarasan D. Karunamurthy⁶, Jose Conejo-Garcia¹², Patrick Hwu¹³, Howard Streicher⁷, Vernon K. Sondak¹¹, John M. Kirkwood^{6,8} and Ahmad A. Tarhini^{1*} 

Abstract

Background: We hypothesized that a gender difference in clinical response may exist to adjuvant CTLA4 blockade with ipilimumab versus high-dose IFN α (HDI). We investigated differences in candidate immune biomarkers in the circulation and tumor microenvironment (TME).

Patients and methods: This gender-based analysis was nested within the E1609 trial that tested adjuvant therapy with ipilimumab 3 mg/kg (ipi3) and 10 mg/kg (ipi10) versus HDI in high risk resected melanoma. We investigated gender differences in treatment efficacy with ipi3 and ipi10 versus HDI while adjusting for age, stage, ECOG performance (PS), ulceration, primary tumor status and lymph node number. Forest plots were created to compare overall survival (OS) and relapse free survival (RFS) between ipi and HDI. Gene expression profiling (GEP) was performed on tumors of 718 (454 male, 264 female) patients. Similarly, serum and peripheral blood mononuclear cells (PBMC) samples were tested for soluble and cellular biomarkers (N=321 patients; 109 female and 212 male).

Results: The subgroups of female, stage IIIc, PS = 1, ulcerated primary, in-transit metastasis demonstrated significant improvement in RFS and/or OS with ipi3 versus HDI. Female gender was significant for both OS and RFS and was further explored. In the RFS comparison, a multivariate Cox regression model including significant variables indicated a significant interaction between gender and treatment ($P=0.024$). In peripheral blood, percentages of CD3+T cells ($P=0.024$) and CD3+CD4+ helper T cells ($P=0.0001$) were higher in females compared to males. Trends toward higher circulating levels of IL1 β ($P=0.07$) and IL6 ($P=0.06$) were also found in females. Males had higher percentages of monocytes ($P=0.03$) with trends toward higher percentages of regulatory T cells (T-reg). Tumor GEP analysis supported enhanced infiltration with immune cells including gammadelta T cells ($P=0.005$), NK cells ($P=0.01$), dendritic

*Correspondence: Ahmad.Tarhini@moffitt.org

¹ Departments of Cutaneous Oncology and Immunology, H. Lee Moffitt Cancer Center and Research Institute, Tampa, FL 33612, USA, 10920 McKinley Dr.

Full list of author information is available at the end of the article



© The Author(s) 2022. **Open Access** This article is licensed under a Creative Commons Attribution 4.0 International License, which permits use, sharing, adaptation, distribution and reproduction in any medium or format, as long as you give appropriate credit to the original author(s) and the source, provide a link to the Creative Commons licence, and indicate if changes were made. The images or other third party material in this article are included in the article's Creative Commons licence, unless indicated otherwise in a credit line to the material. If material is not included in the article's Creative Commons licence and your intended use is not permitted by statutory regulation or exceeds the permitted use, you will need to obtain permission directly from the copyright holder. To view a copy of this licence, visit <http://creativecommons.org/licenses/by/4.0/>. The Creative Commons Public Domain Dedication waiver (<http://creativecommons.org/publicdomain/zero/1.0/>) applies to the data made available in this article, unless otherwise stated in a credit line to the data.

cells ($P=0.01$), CD4+T cells ($P=0.03$), CD8+T cells ($P=0.03$) and T-reg ($P=0.008$) in the tumors of females compared to males and a higher T-effector and IFN γ gene signature score ($P=0.0244$).

Conclusion: Female gender was associated with adjuvant CTLA4 blockade clinical benefits and female patients were more likely to have evidence of type1 immune activation within the TME and the circulation.

Trial registration ClinicalTrials.gov NCT01274338. Registered 11 January 2011, <https://www.clinicaltrials.gov/ct2/show/NCT01274338>

Keywords: Melanoma, Adjuvant, Female, Male, Ipilimumab, Interferon

Introduction

Melanoma accounts for the majority of skin cancer deaths in the United States. An estimated total of 7650 deaths will be attributed to melanoma in 2022 [1]. While early-stage resectable low-risk melanoma can be cured by surgical excision alone, later high-risk stages are managed with the postoperative addition of systemic adjuvant therapy that can reduce the risks of recurrence and death [2]. In 2015, ipilimumab 10 mg/kg (ipi10) received regulatory approval in the U.S. as the first immune checkpoint inhibitor (ICI) adjuvant therapy for high-risk resected melanoma, almost 10 years after the approval of adjuvant high-dose interferon-alpha (HDI) [3]. The North American Intergroup Phase III adjuvant trial E1609 tested ipilimumab 3 mg/kg (ipi3) versus HDI (primary comparison) or ipi10 versus HDI and demonstrated significant overall survival (OS) improvement with ipi3 versus HDI (hazard ratio [HR], 0.78; 95.6% repeated CI 0.61 to 0.99; $P=0.044$) and no significant differences in survival between ipi10 and HDI [4]. Comparing ipi3 and ipi10, there were significant differences in toxicity rates in favor of ipi3 while recurrence and survival rates were similar.

While sexual dimorphism in immunity is acknowledged, sex-based responses to immunotherapies continue to be poorly understood [5]. Gender-based differences in cancer survival are well established in melanoma, with females having a significant survival advantage when compared to males. Cancer-specific survival differences in favor of females appear to decrease, however with increasing age [6], and with increasing metastatic tumor load [7]. While non-biological factors could be associated with this variance, such as a proposed more protective health-seeking behavior in women as well as improved reporting and access to health care, similar trends in cancer-related survival in favor of women were reported when these factors are accounted for [7]. Furthermore, sex hormonal differences have been hypothesized to differentially affect immune responses to immunotherapies [5]. Hormonal studies in murine models have demonstrated gender differences in melanoma outcomes that may be hormonally driven [9]. This is in addition to reported

associations between the levels of estrogen and estrogen receptor expression in melanoma with patient survival in women [8]. When it comes to response to ICIs, gender-based differences have not been consistent in recent analyses of immunotherapy clinical trials. While one meta-analysis of recent immunotherapy clinical trials found significant gender-based differences in clinical benefits from ICIs in patients with metastatic melanoma [9], another metaanalysis found no significant association between gender and ICI survival benefits [10].

Therefore, there is a need to further investigate the contribution of sex to patient immunity and clinical benefits from ICIs in well-conducted randomized clinical trials such as E1609 with available biospecimens for correlative scientific testing. Here, based on our observations and literature reports we hypothesized that there is a gender difference in response to adjuvant immunotherapy with ipilimumab (ipi3 or ipi10) versus HDI as tested in the E1609 trial and investigated treatment efficacy between ipi and HDI in the subgroup of gender while controlling for other prognostic factors in a multivariate model. In addition, we hypothesized that male–female disparities in clinical benefits from ICIs are supported by differences in candidate immune biomarkers in the circulation and the tumor microenvironment (TME) of female and male patients.

Patients and methods

Patients

E1609 was a phase III study that enrolled patients with high-risk melanoma of cutaneous or unknown primary origin. Eligibility criteria included histological confirmation of melanoma. Patients were randomized and were rendered disease-free surgically within 12 weeks of randomization on the trial and were required to have AJCC 7th edition stages IIIB, IIIC, M1a or M1b [4]. Other criteria included ECOG performance status (PS) of 0 or 1 and passing screening safety laboratory testing criteria. Auto-immune disorders and conditions of immunosuppression that necessitated the use of systemic corticosteroids or other immunosuppressants were not permitted.

Trial design and treatments

E1609 was an open-label phase III trial that randomized melanoma patients to systemic adjuvant therapy with ipi10, HDI or ipi3. Patients were stratified by the AJCC 7th edition stage groups of IIIB, IIIC, M1a and M1b [4]. Clinical trial design details and additional information related to the clinical trial endpoint points, treatment regimens, randomization specifics, and trial oversight were previously published [4]. Patient disposition is described in the consort diagram included in Additional file 1: Fig. S1. All patients provided an IRB-approved written informed consent.

Methods and statistical analysis

E1609 demonstrated significant OS benefit with ipi3 versus HDI. We investigated treatment efficacy between ipi and HDI in the subgroups by gender (female, male), age (<55 or ≥55), stage at study entry (AJCC 7th edition IIIB, IIIC, M1a/1b), ECOG performance status (PS 0, 1), primary tumor ulceration (yes, no), primary tumor identification (known, unknown), number of lymph nodes involved (0, 1, 2–3, 4+). Forest plots were created to compare OS and RFS with ipi3 versus HDI and ipi10 versus HDI using the concurrently randomized ITT populations. For the estimated HRs, 95% confidence intervals were created for all subgroups. Univariate and Multivariate analyses were conducted with the multivariate Cox regression analysis used to adjust for confounders.

Gene expression profiling (GEP)

GEP was performed on the tumor biopsies of 718 (454 male, 264 female) melanoma patients. Only metastatic tumors were included that were resected to render patients disease free prior to clinical trial enrollment. Microdissection of Formalin-Fixed Paraffin-Embedded (FFPE) tumor specimens was performed manually using an inverted microscope (Nikon Eclipse TE200) as needed to obtain a minimum of 90% tumor cells for RNA purification. Dissection involved scraping cells from unstained sections of 5 micron thickness on slides aligned in register with serially cut hematoxylin and eosin stained specimens including tumor domains demarcated by a surgical pathologist (A. K.). RNA purification was performed using the Qiagen miRNeasy FFPE Kit and protocol (Qiagen, Valencia, CA) with isolated RNA suspended in nuclease-free water. Inclusion in subsequent in vitro amplification (IVT) assays was determined both by spectrophotometric absorption ratio [$260/280 > 1.8$ (NanoDrop, Wilmington, DE)] and RIN values (RNA Integrity Index) determined via microchip electrophoretic analysis (Agilent Bioanalyzer 2100, Agilent Technologies, Santa Clara, CA). We previously established that RIN

values ranging from 5.0 to 8.0 in RNA from FFPE specimens can undergo successful in vitro transcription and amplification using a multiplex primer approach. Amplification was performed using the NuGen whole transcription method comprising the Ovation FFPE WTA assay (NuGEN, San Carlos, CA) employing random and 3' primers to eliminate amplification bias beginning with 100 ng total RNA. Confirmation of cDNA diversity was obtained using the Bioanalyzer 2100 to generate an electrophoretogram for each amplification reaction regarding sample yield, integrity and size diversity compared to a laboratory human RNA standard and a Universal Human Reference RNA (Stratagene, La Jolla, CA). 5 µg of purified cDNA were incubated with fragmentation buffer (NuGEN, San Carlos, CA) at 37 °C for 30 min, then 95 °C for 2 min. The cDNA samples were hybridized on Affymetrix GeneChip HG U133A 2.0 arrays which comprehensively represent the functionally characterized human genome with overlapping probe sets for transcripts.

Data analysis of gene expression profiles

Robust Multi-array Average (RMA) method was used to normalize raw microarray data as previously described [11, 12]. Genes with multiple probe sets were collapsed by using the probe with maximum gene expression. Gene set enrichment analysis (GSEA) was performed by comparing the female and male tumor samples [13]. In this study, KEGG pathways gene sets were obtained from MSigDB to interrogate the enrichment of pathways in the female and male samples [14]. In order to further deconvolute the cell types in the bulk transcriptomics, we used gene sets obtained from CIBERSORT [15, 16], and TIMEx [17], in comparing the female versus male samples. Gene sets with a false discovery rate (FDR) q -value < 0.15 were deemed as significant. We also tested previously published prognostic gene signatures of immunotherapy in comparing female versus male tumors including IFN γ 6-gene signature (IDO1, CXCL10, CXCL9, HLA-DRA, IFNG, STAT1) [18], and T-effector and IFN γ gene signature (CD8A, GZMA, GZMB, IFNG, EOMES, CXCL9, CXCL10, TBX21) [19]. For each sample, we computed a gene signature score by averaging the standardized z -score for the genes in the signature. For each of these gene signatures [20]. Mann–Whitney U test was performed by comparing female and male and $p < 0.05$ was deemed as statistically significant.

Serum and peripheral blood mononuclear cells (PBMC) data analysis

Peripheral blood samples were tested for soluble (Luminex) and cellular (multicolor flow cytometry) prognostic biomarkers in a subset of patients (N = 321; 109 female and 212 male). Mann–Whitney U test was

performed by comparing between female and male and $p < 0.05$ was deemed as statistically significant.

Peripheral blood

Red top vacutainer tubes (BD, no anticoagulant) were used for serum collection and all samples were processed within 24 h of collection (samples received before 5 pm were processed upon receipt, those arriving after 5 pm were processed the following morning). Serum samples were centrifuged at 2500 rpm for 10 min at 4 °C according to laboratory standard operating procedures (SOPs) and single use aliquots of each patient's sera were then stored at -80 °C. For PBMC, blood was drawn into heparin tubes and processed by the Immunologic Monitoring Laboratory upon receipt. PBMCs were obtained from the blood samples by ficol density-gradient centrifugation and stored frozen. The laboratory freezers were monitored continuously for any temperature fluctuations and maintained the samples at -80 °C.

Multiplex serum cytokine analysis

21 serum cytokines were selected for analysis based on function. These included Th1 type cytokines (IL-12p70, IL-17, IL-2, IP-10), proinflammatory (IL-1 α , IL-1 β , IL-6, TNF- α , TNF-R1I, IL-2R, IL-8, CRP, IL-17, IFN- α), immunoregulatory (TGF- α , IL-10, TIMP1), growth factor (VEGF-A), and other/chemokines (CCL3/MIP-1 α , CCL4/MIP-1 β , CXCL9/MIG, CXCL11/I-TAC). The xMAP Luminex serum assay for these cytokines was performed according to the manufacturer's protocol (BioSource International (Camarillo, CA) as previously described [21], and laboratory SOPs, and analyzed on the Bio-Plex suspension array system (Bio-Rad Laboratories, Hercules, CA). Experimental data was analyzed using five-parametric curve fitting and assay controls included kit standards and multiplex QC controls (R & D Systems). Inter-assay variabilities for individual cytokines were 1.0 to 9.8% and intra-assay variabilities were 3.6 to 12.6% (information provided by Biosource International and validation performed in our laboratory). C-reactive Protein (CRP) was run singly as it requires different dilutions.

Multicolor flow cytometry

Multicolor flow cytometry was used to compare cell subset phenotypes on thawed patient peripheral blood mononuclear cells (PBMC), with healthy donor controls, run according to laboratory SOPs. Regulatory T cells (Treg) were defined as CD4+ CD25+ FOXP3+ or CD4+ CD25hi+ CD39+ cells, to incorporate the candidate functional marker CD39 as previously described [22]. Myeloid-derived-suppressor cells (MDSC) were defined as cells expressing Lin-neg/HLA-DR-/CD33+/

CD11b+ in either a "lymphocyte" (small FSCxSSC) gate, or in a "monocyte" (larger FSCxSSC) gate, and as HLA-DR+/lo CD14+ cells in a large gate as previously described [22]. We also tested the frequencies of CD4+ and CD8+ T cells specific to shared tumor-associated antigens (gp100, MART-1, NY-ESO-1) utilizing overlapping peptide libraries (15-mer peptides overlapping by 4) and a short (4–5 h) in vitro culture to identify activated (CD69+) and cytokine producing (intracellular IFN γ +) T cells. Detailed methods were described previously [22].

Results

The characteristics of patients enrolled in E1609 and the treatment details as well as the incidence rate of irAEs were previously published [4]. Table 1 summarizes the baseline and disease characteristics of the E1609 study population included in this analysis.

Using the concurrently randomized ITT populations in the subgroup analyses, forest plots were created to compare ipi3 versus HDI in terms of RFS and OS (Fig. 1) and to compare ipi10 versus HDI in terms of RFS and OS (Additional file 2: Fig. S2).

In investigating RFS with ipi3 versus HDI, the subgroups of female, stage IIIC, PS = 1, ulcerated, in-transit without lymph node involvement demonstrated significant improvement in OS and/or RFS with ipi3 versus HDI as summarized in Table 2. Female gender was significant for both OS and RFS and was further explored. A multivariate Cox regression model including gender, treatment and interaction term of gender*treatment, indicated a significant interaction between gender and treatment ($P = 0.026$). Including gender, PS (0 versus 1), age (<55 versus ≥ 55), ulceration (yes versus no), stage (IIIB, IIIC, M1a, M1b), treatment and interaction term of gender*treatment, indicated a significant interaction between gender and treatment ($P = 0.024$).

When exploring age further in the univariate analyses in the ipi3 versus HDI comparison, older women appeared to drive most of the difference (age ≥ 55 : OS, $P = 0.02$ and RFS, $P = 0.08$; differences non-significant for age < 55).

While similar trends were clearly seen, no significant interactions between gender and treatment effect were found in the OS multivariate analysis for ipi3 versus HDI or in the comparison of ipi10 versus HDI.

Among the subset of patients (N = 321) tested for circulating biomarkers, females were significantly younger than males ($P = 0.03$). Testing PBMCs, the percentages of CD3+ T cells ($P = 0.04$) and CD3+ CD4+ helper T cells ($P = 0.001$) were significantly higher in female patients compared to males (Fig. 2). Also, there were trends toward higher levels of proinflammatory cytokines IL-1 β

Table 1 Patient demographics and baseline disease characteristics

	Ipilimumab 10 mg/kg (ipi10) (n = 511)	HDI (n = 636)	Ipilimumab 3 mg/kg (ipi3) (n = 523)
Age Median (range)	52 years (18–80)	54 years (18–83)	54 years (19–80)
Stage (AJCC7)			
III B	268 (52.5%)	331 (52.0%)	280 (53.5%)
III C	205 (40.1%)	253 (39.8%)	205 (39.2%)
M1a	28(5.5%)	34 (5.4%)	28 (5.4%)
M1b	10 (1.9%)	18(2.8%)	10 (1.9%)
Sex			
Male	342 (66.9%)	395 (62.1%)	328 (62.7%)
Female	169 (33.1%)	241 (37.9%)	195 (37.3%)
PS			
0	426 (83.5%)	533 (83.8%)	439 (84.7%)
1	85(16.5%)	102 (16.0%)	82 (15%)
Unknown/Missing	0	1 (.2%)	2 (.3%)
Primary tumor status			
Unknown	56 (11.0%)	103 (16.2%)	84 (16.1%)
Ulceration			
No	216 (42.3%)	263 (41.4%)	187 (35.4%)
Yes	227 (44.4%)	260 (41.5%)	252 (46.9%)
Unknown (most due to unknown primary)	68 (13.3%)	113 (18.1%)	84 (17.7%)
Microscopic LN Involvement			
Yes (among III B/III C)	233 (49.2%)	285 (50.5%)	247 (50.9%)

($P=0.07$) and IL6 ($P=0.06$) in females (Additional file 3: Fig. S3). Conversely, males had significantly higher percentages of circulating monocytes ($P=0.03$). Importantly, there were trends toward higher percentages of CD3+/CD4+/CD25hi+/Foxp3+ ($P=0.1$) and CD3+/CD4+/CD25+/CD127low+ ($P=0.1$) T-reg in male patients compared to females (Fig. 3).

Among the cohort of patients ($N=718$) with tumor GEP data, females were significantly younger than males ($P=0.0009$, U-test). As expected, when comparing the differentially expressed genes and pathways between female and male patient tumors, the top ranked genes were related to the sex chromosomes. To investigate the underlying immunologic differences related to female and male in response to immunotherapy, we performed GSEA using CIBERSORT gene signatures which are related to immune cell infiltration and activation. Interestingly, female patients' tumors were significantly enriched in immune related pathways and genes compared to the tumors of male patients, with estimated enhanced immune cell infiltration including CD4+ T cells, CD8+ T cells, $\gamma\delta$ T cells, NK cells, dendritic cells, Tregs and M1 macrophages (Table 3). Furthermore, we performed TIMEx analysis and male patients' tumors were estimated to be enriched in tumor stromal

endothelial cells as compared to female patients' tumors ($p=0.0429$, U-test).

To further explore gender-related differences in response to adjuvant immunotherapy, we evaluated published gene signatures that may be associated with immunotherapy benefits in female versus male tumors in this study. The T-effector and IFN γ gene signature was found to have a higher score in female tumors as compared to male tumors ($P=0.0244$, U-test) and there was a trend toward a higher score for the IFN γ 6-gene signature in favor of female tumors ($P=0.07$, U-test) (Fig. 4).

Discussion

When exploring differences in gender response to immune-checkpoint inhibitors, results from the E1609 trial suggest superior clinical benefits from CTLA4 blockade in the subgroup of female patients. Particularly when accounting for potential confounders, females were shown to have significantly higher relapse-free survival rate as compared to males in the study comparison of ipi3 versus HDI with similar trends observed in the OS comparison and in investigating RFS and OS with ipi10 versus HDI. Overall, in melanoma, female patients have generally been reported to have improved survival including a lower risk of regional and systemic disease progression, and a higher likelihood of survival

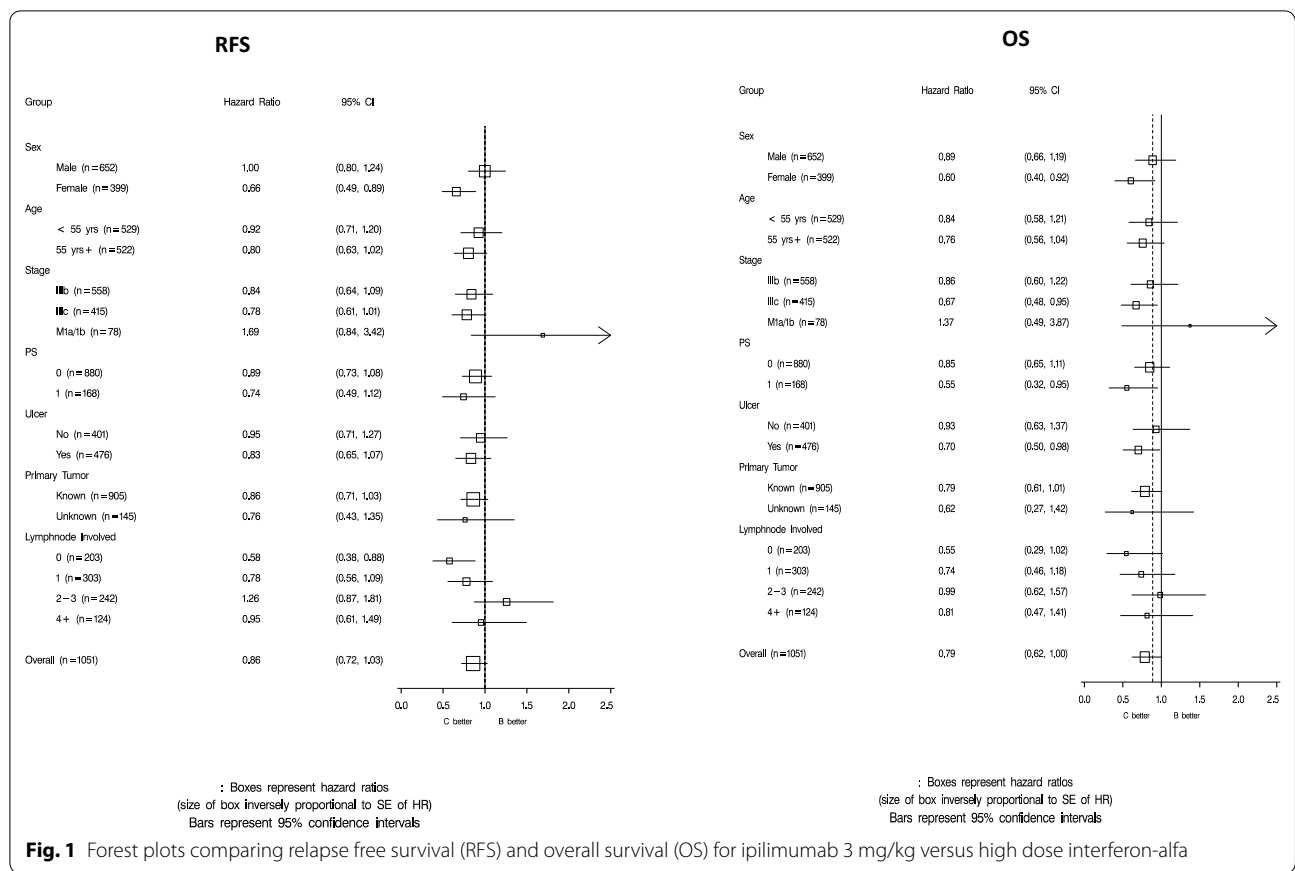


Table 2 Treatment efficacy between ipi3 and HDI by subgroup

Group	HR, 95% CI	
	OS	RFS
Female gender	0.60 (0.40, 0.92)	0.66 (0.49, 0.89)
In-transit, LN-ve	0.55 (0.29, 1.02)	0.58 (0.38, 0.88)
Ulceration	0.70 (0.50, 0.98)	0.83 (0.65, 1.07)
Stage IIIC	0.67 (0.48, 0.95)	0.78 (0.61, 1.01)
PS = 1	0.55 (0.32, 0.95)	0.74 (0.49, 1.12)

Estimated hazard ratios (HR) with 95% confidence intervals (CI) are provided. The subgroups of female, stage IIIC, PS = 1, ulcerated, in-transit without lymph node involvement demonstrated significant improvement in OS and/or RFS with ipi3 versus HDI. Female gender was significant for both OS and RFS

following disease progression [7, 23]. While the results of this study support the gender disparity in terms of benefit from adjuvant CTLA4 blockade, analyses of other ICI trials have not been consistent. Yang et al. reported no significant differences in gender-based benefits from ICIs therapy in a meta-analysis of 37 randomized clinical trials involving patients with advanced malignancies including melanoma [10]. On the other hand, Conforti et al. conducted a meta-analysis of 20 randomized trials of ICIs in advanced cancers including melanoma and

suggested that men derived more survival benefits compared to women [9]. Overall, these meta-analyses constituted pan-cancer analyses, the number of men included was significantly higher than the number of women and the control arm in the melanoma studies was most often another ICI. Furthermore, the aforementioned meta-analyses included studies of inoperable metastatic disease rather than patients in the operable adjuvant setting which is the case of E1609.

Our clinical findings of potential improvement in survival for females following ipilimumab adjuvant therapy were also supported by our immune monitoring studies. In testing candidate circulating biomarkers females were shown to have significantly higher percentages of CD3+ T cells and CD3+CD4+ helper T cells in addition to trends towards higher levels of proinflammatory cytokines IL1 β and IL6 in females. Males had significantly higher percentages of monocytes with trends of higher percentages of CD3+/CD4+/CD25hi+/Foxp3+ and CD3+/CD4+/CD25+/CD127low+ regulatory T cells. Our findings are consistent with other immune monitoring reports in the literature of higher baseline numbers of CD3+ CD4+ helper T cells, a higher CD4+/CD8+ cell ratio in women compared to men [24],

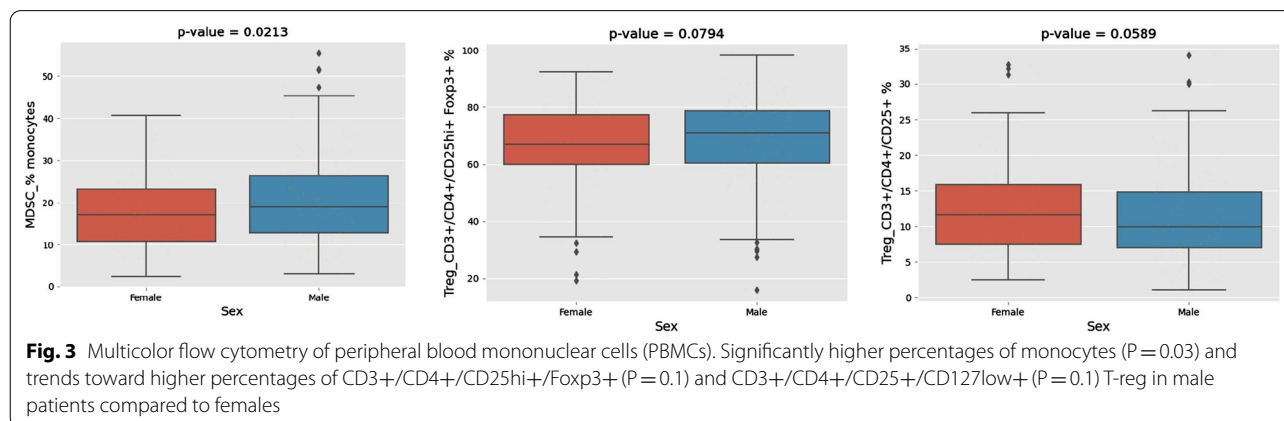
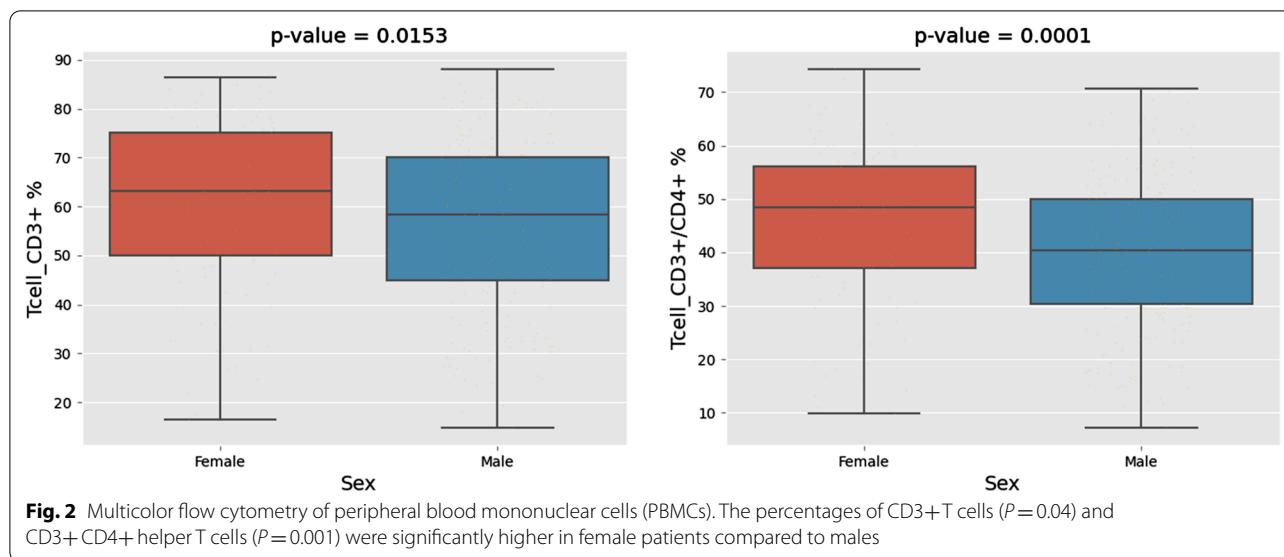
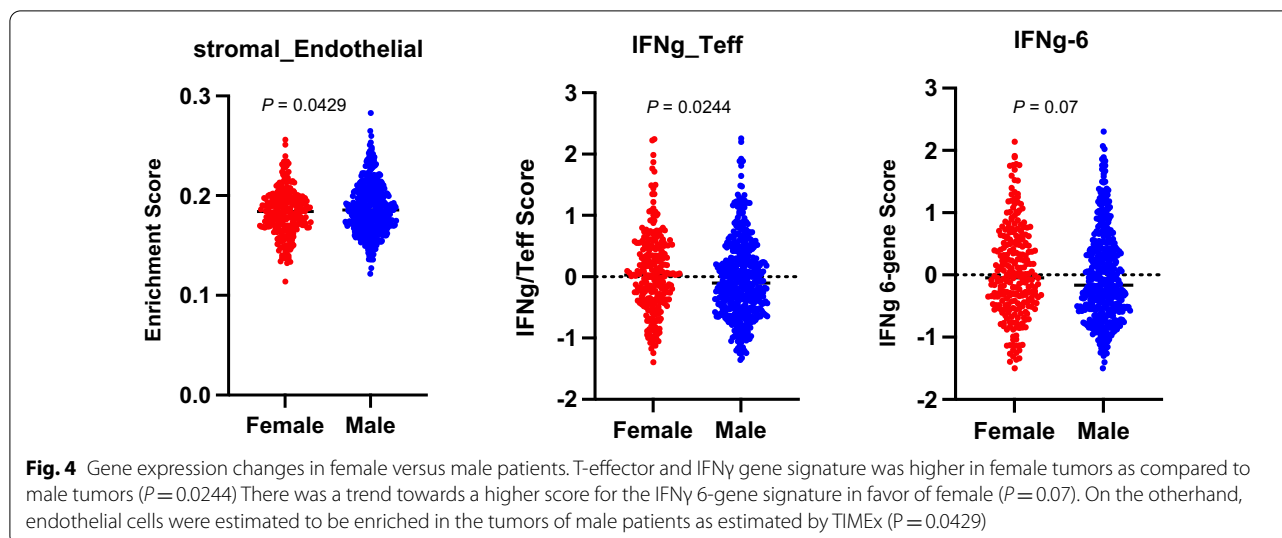


Table 3 Immune related pathways found to be significantly enriched in the tumors of female patients compared to tumors of male patients as computed by gene set enrichment analysis (GSEA; utilizing CIBERSORT gene sets) (NES: Normalized enrichment score)

Name	NES	p-val	FDR q-val
T_CELLS_GAMMA_DELTA	2.16	0.0052	0.1141
NK_CELLS_ACTIVATED	1.97	0.0102	0.0607
NK_CELLS_RESTING	1.77	0.0118	0.0552
DENDRITIC_CELLS_ACTIVATED	1.73	0.0106	0.0465
T_CELLS_REGULATORY_(TREGS)	1.65	0.0085	0.0503
DENDRITIC_CELLS_RESTING	1.59	0.0140	0.0636
T_CELLS_CD8	1.52	0.0270	0.0830
MACROPHAGES_M1	1.50	0.0164	0.0824
T_CELLS_CD4_NAIVE	1.46	0.0294	0.0932

and lower regulatory T cell percentage in females than in males [25]. The monocyte frequency is a new finding and should be investigated further for the M1/M2 profile of those cells, and absolute counts in addition to frequencies. Because ipilimumab blockade of CTL4 induces immune-mediated tumoricidal actions by fortifying effector T cell activation [26], our findings support potential more pronounced immune effects with CTLA4 blockade in the peripheral blood of females as compared to males.

Immune escape in melanoma includes, and certainly is not limited to, altering immune cell functions such as impairing NK cell cytolytic activity, reducing stimulatory effects of dendritic cells upon effector T cells, promoting cytotoxic T cell anergy and stimulating Treg [27]. This is in addition to the ability of the tumor cells



themselves to directly evade T cell surveillance and destruction. The nature of the TME transcriptome provides important clues that reflect the immunogenicity of the TME and its susceptibility to immunotherapy interventions. In this study we identified pathways and genes related to immune cell infiltration and activation that were significantly enriched in the tumors of females compared to males. We estimated enhanced immune cell infiltration in female tumors including CD4+ T cells, CD8+ T cells, $\gamma\delta$ T cells, NK cells and dendritic cells that support a more immunogenic TME and are prognostic or improved survival [28]. Similarly, the T-effector and IFN γ gene signature was found to have a higher score in female tumors and there was a trend towards a higher score for the of IFN γ 6-gene signature in favor of female tumors. These gene expression profiles were shown to be prognostic of improved survival in patients treated with ICIs [18, 19]. Our findings that these signatures were more pronounced in the tumors of females support our original hypothesis of a higher susceptibility to ICI induced immune responses in females with high-risk resected melanoma. Interestingly, we observed that genes related to stromal endothelial cells were significantly more expressed in the tumors of males. Cancer growth and metastasis are regulated in part by stromal cells such as fibroblasts and endothelial cells that impact the immune cell repertoire within the TME. Increased endothelial cell density may reflect a more angiogenic tumor where neoangiogenesis is a recognized hallmark of cancer that drives cancer progression and growth and confers poorer prognosis [29–31]. In terms of the tumor types tested and

potential differences between males and females, all tumors were metastases. The types of metastases were cutaneous/subcutaneous, nodal or lung metastasis as reflected by the patients' stage groups (IIIB, IIIC, M1a or M1b). We analyzed our cohort of 718 patients and have found no significant differences between females and males in terms of stage groups. Therefore, it is unlikely that there are significant differences between females and males in terms of the types of tumor tissue samples analyzed that may explain the difference in endothelial cell density.

Finally, we observed that females were significantly younger than males in our cohorts. This observation is consistent with the incidence of melanoma in the general population. Furthermore, in our investigation of gender differences in treatment efficacy we adjusted for age and other prognostic factors including stage, ECOG PS, ulceration, primary tumor status and lymph node number. In addition, when exploring age further in the univariate analyses in the ipi3 versus HDI comparison, older women appeared to drive most of the differences in survival (age ≥ 55 : OS, $P = 0.02$ and a trend in RFS, $P = 0.08$; differences were non-significant for age < 55). Therefore, it is unlikely that the younger age of females is a major contributing factor to the outcomes seen in our analysis.

Conclusions

Female gender was associated with adjuvant immunotherapeutic benefit and female patients were more likely to have evidence of immune activation within the TME and the circulation, supporting a potentially important role for factors related to female gender in

the immune response against melanoma. These warrant further investigation.

Abbreviations

AJCC: American Joint Committee on Cancer; CTLA-4: Cytotoxic T lymphocyte antigen 4; ECOG-ACRIN: Eastern Cooperative Oncology Group-American College of Radiology Imaging Network; FFPE: Formalin fixed paraffin embedded; GSEA: Gene set enrichment analysis; GI: Gastrointestinal; MHC: Major histocompatibility complex; HDI: High-dose interferon- α ; HR: Hazard ratio; ICI: Immune checkpoint inhibitor; irAE: Immune-related adverse event; Ipi3: Ipilimumab at 3 mg/kg; Ipi10: Ipilimumab at 10 mg/kg; KEGG: Kyoto Encyclopedia of Genes and Genomes; MUP: Melanoma of unknown primary; NES: Normalized enrichment score; PBMC: Peripheral blood mononuclear cells; PD-1: Programmed cell death protein 1; PS: Performance status; OS: Overall survival; RFS: Relapse free survival; TME: Tumor microenvironment.

Supplementary Information

The online version contains supplementary material available at <https://doi.org/10.1186/s12967-022-03450-3>.

Additional file 1: Figure S1. E1609 Consolidated Standards of Reporting Trials diagram (adult patient population). aE1609 included a pediatric component (ages 12–17 years) consisting of three separate cohorts randomized to the three treatment regimens and analyzed separately for safety per study protocol. Total pediatric accrual was three subjects; bthese overlap with but are not limited to treatment-related grade 5 events previously reported; cconcurrently randomized cases. HDI, high-dose interferon alpha-2b; Ipi3, ipilimumab 3 mg/kg; Ipi10, ipilimumab 10 mg/kg; ITT, Intent to Treat.

Additional file 2: Figure S2. Forest plots comparing relapse free survival (RFS) and overall survival (OS) for ipilimumab 10 mg/kg versus high dose interferon- α .

Additional file 3: Figure S3. Serum cytokine analysis utilizing the xMAP Luminex serum assay. Trends toward higher levels of proinflammatory cytokines IL1beta ($P=0.07$) and IL6 ($P=0.06$) in females compared to males.

Acknowledgements

We thank the patients and their families and the investigators who participated in the E1609 study. The authors are also indebted to Professor Uma N. M. Rao who acted as the Pathology Co-Chair for the original ECOG-ACRIN E1609 trial. Professor Rao passed away in 2020. Presented in part elsewhere: Presented in part at the Annual Meeting of the American Society of clinical Oncology, Chicago, IL, May 28–May 30, 2020 and the Society for Immunotherapy of Cancer's (SITC) 36th Annual Meeting, Washington, D.C., Nov. 10–14, 2021.

Author contributions

Conception and design: AT, SL, ACT, IE, LB, WL. Provision of study material or patients: AT, JK, FSH, VS, ECOG-ACRIN E1609 study investigators. Collection and assembly of data: AT, JK, SL, FSH, VS, ECOG-ACRIN E1609 study investigators. Data analysis: AT, SL, ACT, IE, MS. Data interpretation: AT, SL, ACT, IE, LB, WL, WS, FSH, JK, VS, ADK, JCG, PH, HS, MS. Manuscript writing: All authors. Final approval of manuscript: All authors. Accountable for all aspects of the work: All authors. All authors read and approved the final manuscript.

Funding

This study was coordinated by the ECOG-ACRIN Cancer Research Group (Peter J. O'Dwyer, MD and Mitchell D. Schnall, MD, PhD, Group Co-Chairs) and supported by the National Cancer Institute of the National Institutes of Health under the following award numbers: U10CA180820, U10180794, U10CA180888, UG1CA233180, UG1CA233184. The content is solely the responsibility of the authors and does not necessarily represent the official views of the National Institutes of Health. This study was also supported by Bristol Myers Squibb. Biomarkers studies were supported under University of Pittsburgh Skin Spore award number P50CA12197310 (Tarhini, Storkus,

Butterfield and Kirkwood). Support for Shared Resources was provided by Cancer Center Support Grant (CCSG) CA076292 to H. Lee Moffitt Cancer Center.

Data availability

The data sets generated, analyzed and reported in the present paper will be made available in the NCTN/NCORP Data Archive (<https://nctn-data-archive.nci.nih.gov>).

Declarations

Ethics approval and consent to participate

The study protocol was approved by the institutional review board of each participating institution and conducted in accordance with Good Clinical Practice guidelines as defined by the International Conference on Harmonization. All patients provided an IRB-approved written informed consent. This study was monitored by the ECOG-ACRIN Data Safety Monitoring Committee and the NCI.

Consent for publication

Yes.

Competing interests

MS has nothing to disclose. AAT reports grants from National Cancer Institute, National Institute of Health, ECOG-ACRIN, grants from Bristol Myers Squibb, during the conduct of the study; grants from Bristol Myers Squibb, personal fees from Bristol Myers Squibb, grants from Merck, personal fees from Merck, personal fees from Novartis, personal fees from Genentech-Roche, grants from Genentech-Roche, personal fees from Array Biopharma, grants from Incyte, personal fees from Incyte, personal fees from NEWLINK Genetics, personal fees from HUYA, personal fees from BioNTech, grants from Prometheus, personal fees from Prometheus, personal fees from Immunocore, grants from Greenpeptide, grants from Amgen, grants from Clinigen, personal fees from Clinigen, personal fees from Partners Therapeutics, personal fees and grants from Regeneron, personal fees and grants from Sanofi-Genzyme outside the submitted work. SJL has nothing to disclose. ACT reports has nothing to disclose. IEN is a deputy editor for Medical Physics and reports relationship with Scientific Advisory Endectra, LLC. FSH reports clinical trial support from Eastern Cooperative oncology Group, during the conduct of the study; grants, personal fees and other from Bristol Myers Squibb, personal fees from Merck, personal fees from EMD Serono, grants and personal fees from Novartis, personal fees from Takeda, personal fees from Surface, personal fees from Genentech/Roche, personal fees from Compass Therapeutics, personal fees from Apricity, personal fees from Bayer, personal fees from Aduro, personal fees from Partners Therapeutics, personal fees from Sanofi, personal fees from Pfizer, personal fees from Pionyr, from 7 Hills Pharma, personal fees from Verastem, other from Torque, personal fees from Rheos, outside the submitted work; in addition, Dr. Hodi has a patent Methods for Treating MICA-Related Disorders (#20100111973) with royalties paid, a patent Tumor antigens and uses thereof (#7250291) issued, a patent Angiopoiten-2 Biomarkers Predictive of Anti-immune checkpoint response (#20170248603) pending, a patent Compositions and Methods for Identification, Assessment, Prevention, and Treatment of Melanoma using PD-L1 Isoforms (#20160340407) pending, a patent Therapeutic peptides (#20160046716) pending, a patent Therapeutic Peptides (#20140004112) pending, a patent Therapeutic Peptides (#20170022275) pending, a patent Therapeutic Peptides (#20170008962) pending, a patent THERAPEUTIC PEPTIDES Therapeutic Peptides Patent number: 9402905 issued, and a patent METHODS OF USING PEMBROLIZUMAB AND TREBANANIB pending. LHB declares the following unrelated advisory activities: StemImmune/Calidi Scientific and Medical Advisory Board, April 6, 2017-present; Western Oncolytics, Scientific Advisory Board, 2018-present; Torque Therapeutics, Scientific Advisory Board, 2018–2020; Khloris, Scientific Advisory Board, 2019-present; Pyxis, Scientific Advisory Board, 2019-present; Cytomix, Scientific Advisory Board, 2019-present; Vir, Scientific Advisory Board meeting, Feb. 2020; DCprime, Scientific Advisory Board meeting, Nov. 2020; RAPT, Scientific Advisory Board, 2020-present; Takeda, Scientific Advisor, 2020-present; EnaraBio scientific advisor, Feb. 2021. WAL has nothing to disclose. WS has nothing to disclose. ADK has nothing to disclose. JRCG has stock options with Compass

Therapeutics, Anixa Biosciences and Alloy Therapeutics, receives honorarium from Anixa Biosciences, Alloy Therapeutics and Leidos, and has sponsored research with Anixa Biosciences. PH reports consulting fees consulting fees from Dragonfly and Immatics. HS has nothing to disclose. VKS reports personal fees from Merck, Bristol-Myers Squibb, Novartis, Array, Polynoma, Pfizer, and Regeneron, outside the submitted work. JMK reports grants and personal fees from Amgen, Bristol Myers Squibb, Castle Biosciences, Checkmate Pharmaceuticals, Immvira Pharma Co., Immunocore, Iovance Biotherapeutics, Lion Biotechnologies, Merck, Novartis Pharmaceuticals, Schering-Plough, personal fees Ankyra Therapeutics, Axio Research / Instil Bio, Becker Pharmaceutical Consulting, DermTech, Elsevier, Fenix Group International, Harbour BioMed, Intellisphere, LLC / Cancer Network, IQVIA, Istari Oncology, Millennium Pharmaceuticals / Takeda Pharmaceutical, Natera, OncoCyte, OncoSec, Pfizer, Replimune, Scopus BioPharma, SR One Capital Management, outside the submitted work.

Author details

¹Departments of Cutaneous Oncology and Immunology, H. Lee Moffitt Cancer Center and Research Institute, Tampa, FL 33612, USA, 10920 McKinley Dr.. ²Dana Farber Cancer Institute and Harvard Medical School, Boston, MA, USA. ³Dana Farber Cancer Institute, Boston, MA, USA. ⁴Univ. California San Francisco and The Parker Institute for Cancer Immunotherapy, San Francisco, CA, USA. ⁵Allegheny Health Network Cancer Institute, Pathology, Pittsburgh, PA, USA. ⁶University of Pittsburgh School of Medicine (UPSON), Pittsburgh, PA, USA. ⁷National Cancer Institute, Rockville, MD, USA. ⁸UPMC Hillman Cancer Center, University of Pittsburgh, Pittsburgh, PA, USA. ⁹Department of Biostatistics and Bioinformatics, H. Lee Moffitt Cancer Center and Research Institute, Tampa, USA, Florida. ¹⁰Department of Machine Learning, H. Lee Moffitt Cancer Center and Research Institute, Tampa, USA. ¹¹Department of Cutaneous Oncology, H. Lee Moffitt Cancer Center and Research Institute, Florida, Tampa, USA. ¹²Department of Immunology, H. Lee Moffitt Cancer Center and Research Institute, Florida, Tampa, USA. ¹³Administration, Cutaneous Oncology, Immunology, H. Lee Moffitt Cancer Center and Research Institute, Florida, Tampa, USA.

Received: 17 March 2022 Accepted: 19 May 2022

Published online: 03 June 2022

References

- Siegel RL, Miller KD, Fuchs HE, Jemal A. Cancer statistics, 2022. *CA Cancer J Clin.* 2022;72(1):7–33.
- Tarhini AA. The current state of adjuvant therapy of melanoma. *Lancet Oncol.* 2020;21(11):1394–5.
- Eggermont AM, Chiarion-Sileni V, Grob JJ, et al. Prolonged survival in stage III melanoma with ipilimumab adjuvant therapy. *N Engl J Med.* 2016;375(19):1845–55.
- Tarhini AA, Lee SJ, Hodi FS, et al. Phase III study of adjuvant ipilimumab (3 or 10 mg/kg) versus high-dose interferon Alfa-2b for resected high-risk melanoma: North American Intergroup E1609. *J Clin Oncol.* 2020;38(6):567–75.
- Klein SL, Morgan R. The impact of sex and gender on immunotherapy outcomes. *Biol Sex Differ.* 2020;11(1):24.
- Hieken TJ, Glasgow AE, Enninga EAL, et al. Sex-based differences in melanoma survival in a contemporary patient cohort. *J Womens Health.* 2020;29(9):1160–7.
- Joesse A, Collette S, Suci S, et al. Sex is an independent prognostic indicator for survival and relapse/progression-free survival in metastasized stage III to IV melanoma: a pooled analysis of five European organisation for research and treatment of cancer randomized controlled trials. *J Clin Oncol.* 2013;31(18):2337–46.
- Bellenghi M, Puglisi R, Pontecorvi G, De Feo A, Care A, Mattia G. Sex and gender disparities in melanoma. *Cancers.* 2020;12(7):1819.
- Conforti F, Pala L, Bagnardi V, et al. Cancer immunotherapy efficacy and patients' sex: a systematic review and meta-analysis. *Lancet Oncol.* 2018;19(6):737–46.
- Yang F, Markovic SN, Molina JR, et al. Association of sex, age, and Eastern Cooperative Oncology Group performance status with survival benefit of cancer immunotherapy in randomized clinical trials: a systematic review and meta-analysis. *JAMA Netw Open.* 2020;3(8):e2012534.
- Irizarry RA, Hobbs B, Collin F, et al. Exploration, normalization, and summaries of high density oligonucleotide array probe level data. *Biostatistics.* 2003;4(2):249–64.
- Tarhini AA, Lee SJ, Tan AC, et al. Improved prognosis and evidence of enhanced immunogenicity in tumor and circulation of high-risk melanoma patients with unknown primary. *J Immunother Cancer.* 2022;10(1):e004310.
- Subramanian A, Tamayo P, Mootha VK, et al. Gene set enrichment analysis: a knowledge-based approach for interpreting genome-wide expression profiles. *Proc Natl Acad Sci USA.* 2005;102(43):15545–50.
- Liberzon A, Subramanian A, Pinchback R, Thorvaldsdottir H, Tamayo P, Mesirov JP. Molecular signatures database (MSigDB) 3.0. *Bioinformatics.* 2011;27(12):1739–40.
- Newman AM, Liu CL, Green MR, et al. Robust enumeration of cell subsets from tissue expression profiles. *Nat Methods.* 2015;12(5):453–7.
- Seiler M, Peng S, Agrawal AA, et al. Somatic mutational landscape of splicing factor genes and their functional consequences across 33 cancer types. *Cell Rep.* 2018;23(1):282–96.
- Xie M, Lee K, Lockhart JH, et al. TIMEx: tumor-immune microenvironment deconvolution web-portal for bulk transcriptomics using pan-cancer scRNA-seq signatures. *Bioinformatics.* 2021. <https://doi.org/10.1093/bioinformatics/btab244>.
- Ayers M, Lunceford J, Nebozhyn M, et al. IFN-gamma-related mRNA profile predicts clinical response to PD-1 blockade. *J Clin Invest.* 2017;127(8):2930–40.
- Fehrenbacher L, Spira A, Ballinger M, et al. Atezolizumab versus docetaxel for patients with previously treated non-small-cell lung cancer (POPLAR): a multicentre, open-label, phase 2 randomised controlled trial. *Lancet.* 2016;387(10030):1837–46.
- Liu D, Lin JR, Robitschek EJ, et al. Evolution of delayed resistance to immunotherapy in a melanoma responder. *Nat Med.* 2021;27(6):985–92.
- Butterfield LH, Potter DM, Kirkwood JM. Multiplex serum biomarker assessments: technical and biostatistical issues. *J Transl Med.* 2011;9:173.
- Tarhini AA, Edington H, Butterfield LH, et al. Immune monitoring of the circulation and the tumor microenvironment in patients with regionally advanced melanoma receiving neoadjuvant ipilimumab. *PLoS ONE.* 2014;9(2):e87705.
- Joesse A, de Vries E, Eckel R, et al. Gender differences in melanoma survival: female patients have a decreased risk of metastasis. *J Invest Dermatol.* 2011;131(3):719–26.
- Wikby A, Mansson IA, Johansson B, Strindhall J, Nilsson SE. The immune risk profile is associated with age and gender: findings from three Swedish population studies of individuals 20–100 years of age. *Biogerontology.* 2008;9(5):299–308.
- Afshan G, Afzal N, Qureshi S. CD4+CD25(hi) regulatory T cells in healthy males and females mediate gender difference in the prevalence of autoimmune diseases. *Clin Lab.* 2012;58(5–6):567–71.
- Peggs KS, Quezada SA, Chambers CA, Korman AJ, Allison JP. Blockade of CTLA-4 on both effector and regulatory T cell compartments contributes to the antitumor activity of anti-CTLA-4 antibodies. *J Exp Med.* 2009;206(8):1717–25.
- Falahat R, Berglund A, Putney RM, et al. Epigenetic reprogramming of tumor cell-intrinsic STING function sculpts antigenicity and T cell recognition of melanoma. *Proc Natl Acad Sci USA.* 2021;118(15):e2013598118.
- Tarhini AA, Kudchadkar RR. Predictive and on-treatment monitoring biomarkers in advanced melanoma: moving toward personalized medicine. *Cancer Treat Rev.* 2018;71:8–18.
- Kashani-Sabet M, Sagebiel RW, Ferreira CM, Nosrati M, Miller JR 3rd. Vascular involvement in the prognosis of primary cutaneous melanoma. *Arch Dermatol.* 2001;137(9):1169–73.
- Tarhini AA, Frankel P, Margolin KA, et al. Aflibercept (VEGF Trap) in inoperable stage III or stage IV melanoma of cutaneous or uveal origin. *Clin Cancer Res.* 2011;17(20):6574–81.
- Tarhini AA, Frankel P, Ruel C, et al. NCI 8628: a randomized phase 2 study of ziv-aflibercept and high-dose interleukin 2 or high-dose interleukin 2 alone for inoperable stage III or IV melanoma. *Cancer.* 2018;124(22):4332–41.

Publisher's Note

Springer Nature remains neutral with regard to jurisdictional claims in published maps and institutional affiliations.

Ready to submit your research? Choose BMC and benefit from:

- fast, convenient online submission
- thorough peer review by experienced researchers in your field
- rapid publication on acceptance
- support for research data, including large and complex data types
- gold Open Access which fosters wider collaboration and increased citations
- maximum visibility for your research: over 100M website views per year

At BMC, research is always in progress.

Learn more biomedcentral.com/submissions

