

UCLA

UCLA Previously Published Works

Title

Structural and functional brain alterations revealed by neuroimaging in CNV carriers

Permalink

<https://escholarship.org/uc/item/9rq7p90v>

Authors

Moreau, Clara A
Ching, Christopher Rk
Kumar, Kuldeep
[et al.](#)

Publication Date

2021-06-01

DOI

10.1016/j.gde.2021.03.002

Peer reviewed



HHS Public Access

Author manuscript

Curr Opin Genet Dev. Author manuscript; available in PMC 2022 June 01.

Published in final edited form as:

Curr Opin Genet Dev. 2021 June ; 68: 88–98. doi:10.1016/j.gde.2021.03.002.

Structural and functional brain alterations revealed by neuroimaging in CNV carriers

Clara A. Moreau^{1,2,3}, Christopher R. K. Ching⁴, Kuldeep Kumar¹, Sebastien Jacquemont^{1,2}, Carrie E. Bearden⁵

¹Sainte-Justine Hospital Research Center, Montreal, Canada

²Department of Pediatrics, University of Montreal, Montreal, Canada

³Centre de Recherche de l'Institut Universitaire de Gériatrie de Montréal, Montréal, Canada

⁴Imaging Genetics Center, USC Mark and Mary Stevens Neuroimaging and Informatics Institute, Keck School of Medicine of the University of Southern California

⁵Semel Institute for Neuroscience and Human Behavior, Departments of Psychiatry and Biobehavioral Sciences and Psychology, University of California, Los Angeles. Semel Institute/NPI, 760 Westwood Plaza, Los Angeles, CA 90024, USA

Abstract

Copy Number Variants (CNVs) are associated with elevated rates of neuropsychiatric disorders. A 'genetics-first' approach, involving the CNV effects on the brain, irrespective of clinical symptomatology, allows investigation of mechanisms underlying neuropsychiatric disorders in the general population. Recent years have seen an increasing number of larger multisite neuroimaging studies investigating the effect of CNVs on structural and functional brain endophenotypes. Alterations overlap with those found in idiopathic psychiatric conditions but effect sizes are 2 to 5-fold larger. Here we review new CNV-associated structural and functional brain alterations and outline the future of neuroimaging genomics research, with particular emphasis on developing new resources for the study of high-risk CNVs and rare genomic variants.

Keywords

structural MRI; functional connectivity; copy number variation; 22q11.2; 16p11.2; neuropsychiatric disorders

Corresponding authors: Carrie E. Bearden and Sebastien Jacquemont, clara.moreau@umontreal.ca, sebastien.jacquemont@umontreal.ca.

Publisher's Disclaimer: This is a PDF file of an unedited manuscript that has been accepted for publication. As a service to our customers we are providing this early version of the manuscript. The manuscript will undergo copyediting, typesetting, and review of the resulting proof before it is published in its final form. Please note that during the production process errors may be discovered which could affect the content, and all legal disclaimers that apply to the journal pertain.

Introduction: A brief history

Over the past two decades, the study of brain alterations associated with specific genetic conditions has offered a powerful tool for investigating gene–brain-behavior relationships in humans. Earlier structural and functional neuroimaging studies revealed insights into the impact of genetic conditions such as Fragile X [3], Turner Syndrome and Williams Syndrome on brain development and downstream behavior [4]. This ‘behavioral neurogenetics’ approach has shed light on potential mechanisms underlying developmental neuropsychiatric disorders in the general population. These initial studies were performed before the widespread availability of genome-wide chromosomal array techniques and thus were limited to a small set of clinically recognizable conditions diagnosed with locus-specific genetic tests. In recent years, both case-control and population-based neuroimaging studies of ever-increasing sample sizes, in which DNA was also collected (Figure 1), have provided an opportunity to investigate the effects of a broader range of genetic mutations on brain structure and function. In particular, recurrent copy number variants (CNVs) associated with elevated rates of neuropsychiatric disorders, including autism spectrum disorder (ASD) and schizophrenia, have advanced knowledge of genetic drivers of structural and functional brain alterations.

Several developments in recent years have greatly accelerated progress (Figure 1). In particular, significant technical advances in both acquisition and analysis of neuroimaging data, have facilitated harmonization across sites and scanners [5], both prospectively [6] and retrospectively [7], and have substantially increased resolution of imaging acquisition protocols, thus providing greater insights into neurobiology. Secondly, increasing collection of large multi-site and population-based cohorts using common protocols, as well as increased public availability of imaging-genomic data resources [8,9], has led to important cross-CNV discoveries, described below.

Structural brain alterations in CNV carriers

Recent structural neuroimaging studies have included vastly larger samples of CNV carriers due to new efforts in data collection, development of international consortia, and, to some extent, large-scale population-based studies. The Enhancing NeuroImaging Genetics through Meta-Analysis (ENIGMA), Variation in individual’s project (VIP) and European 16p11.2 Consortia have published multi-site studies of brain structure alterations in 22q11.2, 16p11.2 [10,11], and 15q11.2 CNVs [12], applying standardized processing and analysis techniques to improve replication and generalizability of findings, while empowering comparisons with large-scale studies of idiopathic psychiatric illness. Semi-automated methods to measure MRI-derived thickness and surface area of the cerebral cortex (Text Box 1) are widely used in neuroimaging studies and have been used to model developmental and disease processes. One of the most notable observations across studies is that the effect sizes of CNV-associated brain alterations are generally 2 to 5-fold larger than those found in large-scale studies of idiopathic psychiatric disorders (Figure 2).

Insights from the 22q11.2 Microdeletion and Williams Syndrome

The 22q11.2 deletion syndrome (22q11DS; also known as Velocardiofacial Syndrome) has been more widely studied using neuroimaging techniques due to its relative frequency (at ~1/4000 live births), large effects on neurodevelopment, and well-established link with schizophrenia. One in four individuals with 22q11DS develops psychotic illness, thus providing a powerful genetics-first framework to study brain markers for psychosis. A recent meta-analysis finds that 22q11DS is associated with widespread reductions of brain volume that converge with findings from idiopathic schizophrenia [13]. Recent ENIGMA studies, which have pooled 22q11DS neuroimaging cohorts from around the world, have mapped large-scale cortical [14], subcortical [15], and white matter [16] alterations in 22q11DS using both conventional and vertex-wise methods to reveal the spatial complexity of these alterations. Individuals with 22q11DS showed a widespread and highly consistent pattern of thicker cortex and lower cortical surface area [14], as well as robust subcortical alterations including smaller overall hippocampal, putamen, amygdala, and left thalamus volumes, and larger bilateral ventricle, caudate and accumbens volumes [15]. Subcortical shape analysis revealed a complex spatial pattern of these morphometric differences between 22q11DS and typically developing individuals [15]. In the first evidence of an effect of 22q11.2 deletion size on structural anatomy, smaller deletions (1.5Mb LCRA-LCRB) were associated with significantly greater cortical surface area [14] and less extreme subcortical alterations compared to the larger, more typical deletion (~2.6Mb LCRA-LCRD) [15].

Structural brain alterations have also been investigated in Williams Syndrome (WS), a condition resulting from a deletion of 26 genes at chromosome 7q11.23, associated with marked visuospatial deficits and hypersocial personality [17]. Using an alternative approach to identify intermediate phenotypes for broader genetic association studies, researchers created a multivariate neuroanatomical score from structural brain differences found between individuals with WS and controls. These neuroanatomical scores were then associated with SNPs within the 7q11.23 WS region from neurotypical cohorts and used to identify potential loci involved in normal brain development [18].

Gene Dosage Effects on the Brain

Studies have revealed that reciprocal CNVs, (i.e., deletions and duplications at the same locus) have opposing effects on brain phenotypes. Given the correlation between the number of genomic copies (deletions or duplications) and transcriptional levels of genes encompassed in CNVs [19], one may conclude that transcription levels quantitatively modulate structural and functional neuroimaging phenotypes. Intriguingly, the direction of such dosage effects differs across CNVs [Figure 2]: while 1q21.1 and 22q11.2 show positive dosage effects on brain volume and surface area (Del<Control<Dup), 16p11.2 BP4–5 and BP1–3 show negative dosage effects on grey and white matter volumes and cortical surface area (Dup<Control<Del). Similarly, head circumference, intracranial volume (ICV), and insula volumes were negatively correlated with the number of genomic copies at the 16p11.2 BP4–5 locus [10]. These brain alterations were present at age 4 and remained stable across childhood, adolescence and early adulthood [20]. 16p11.2 BP1–3 deletion carriers were also found to have higher ICV, putamen, pallidum, and caudate brain volumes, whereas individuals with reciprocal duplications had lower brain volumes [11]. In contrast, 22q11.2

reciprocal CNVs show positive gene dosage effects for ICV, gray/white matter volume, cortical surface area, and hippocampal volumes, with a negative gene dosage effect for mean cortical thickness, caudate, and corpus callosum volume [21]. Similar principles of gene dosage apply to sex chromosome aneuploidies, where there are large-effect negative associations between the number of additional X chromosomes and total cortical surface area, as well as total brain volume [22]. 15q11.2 deletion carriers show a similar pattern to 22q11.2 deletions, albeit with much smaller effects, involving lower surface area and thicker cortex across frontal, cingulate, and pre-and post-central regions compared to duplication and non-carriers [12], as well as reciprocal alterations in white matter, with duplications showing higher fractional anisotropy compared to controls and duplications (Del>Control>Dup) [23]. However, the very small effect size observed for 15q11.2 duplications means that much larger studies will be needed to confirm these preliminary findings. Notably, 15q11.2 CNVs have consistently small effects on both brain and neurobehavioral traits, including psychiatric disease risk and cognition [24,25]. Taken together, the observed dose-response on brain traits observed across multiple CNVs suggests that neuroanatomical variation may be sensitive to gene dosage across multiple genomic regions. This is in line with the highly polygenic architecture of cortical surface area, observed in GWAS of common variants [26]. Furthermore, pervasive effects of gene dosage across cortical and subcortical structures suggests these effects may be driven by genes important in early neurodevelopment.

Shared vs. Distinct Neuroanatomic Effects across CNVs

The polygenic nature of psychiatric conditions and the pleiotropic effects of genomic-risk variants could potentially be explained by the shared effects of genomic variants on brain alteration. The proportion of shared and specific effects associated with CNVs remains unknown. A recent examination of subcortical variation across CNVs found significantly smaller volumes (hippocampus, thalamus, putamen, pallidum, and accumbens) in 49 unaffected individuals carrying at least one of 12 CNVs known to increase risk for schizophrenia [27]. These subcortical volume decreases mediated a proportion of the negative association between CNVs and fluid intelligence. Another cross-CNV study found that CNV-associated penetrance scores for psychiatric illness were associated with medial (cingulum and corpus callosum) white-matter microstructure and morphological features [28]. However, larger samples, including a broader list of genomic variants, are required to draw robust conclusions on the putative convergence of CNVs on shared brain alterations.

Effects of CNVs versus effects of idiopathic Schizophrenia and ASD on Brain Structure

One of the key goals of neuroimaging studies of ‘neuropsychiatric’ CNVs is to determine whether there is convergence with underlying neuroanatomic alterations observed in complex polygenic idiopathic (i.e., behaviorally defined) developmental psychiatric disorders. To date, observations suggest that 1) CNVs with opposing effects on brain structure and function may be associated with the same neuropsychiatric condition; e.g., 16p11.2 deletions and duplications are both associated with high ASD risk); and 2) The effect sizes of rare variants on neuroimaging endophenotypes are concordant with their effects on cognitive and behavioural traits [10,29] observed for neuroimaging phenotypes in idiopathic schizophrenia, ASD, and ADHD (Figure 2) [30,31]; 3) Additional factors present

in CNV carriers who develop a psychiatric condition demonstrate neuroimaging similarities with that particular condition, as suggested by findings from the multisite 22q-ENIGMA study where large demographically well-matched subgroups of 22q11.2 deletion carriers with and without a psychotic disorder were investigated. Notably, those with 22q11.2 deletion and a history of psychosis showed significantly thinner frontal-temporal cortex [14], as well as smaller thalamic, hippocampal and amygdala volumes compared to 22q11.2 deletion cases without a history of psychosis [15]; these findings converge with those from the largest studies of cortical and subcortical structure in idiopathic schizophrenia [32,33]. In contrast, analysis of white matter revealed a sharply diverging pattern from idiopathic schizophrenia [34], characterized by higher fractional anisotropy and lower diffusivity [16] (Text Box 1), suggesting distinct connectivity profiles may drive similar clinical outcomes. If indeed CNVs increase risk for neuropsychiatric disorders through distinct brain mechanisms, this would suggest that there may be mechanistically distinct subgroups with divergent brain alterations within behaviorally defined (idiopathic) cohorts, with this heterogeneity resulting in much smaller average effect sizes and diluting signal (Figure 2).

Functional connectivity across CNVs

Functional connectivity (FC) studies have provided critical insight into the architecture of brain networks involved in neuropsychiatric disorders. FC represents the intrinsic low-frequency synchronization between different neuroanatomical regions. It is measured via resting-state functional magnetic resonance imaging (rs-fMRI) which captures fluctuations of blood oxygenation as an indirect measure of neural activity across brain areas when no explicit task is performed (Text Box 1). The field has gained traction, characterizing increasingly reproducible results [35] and demonstrating FC dimensions shared across diagnostic categories, suggesting that correlations observed at the molecular level are also present at the brain network level [36].

Few studies to date have investigated the effect of neuropsychiatric CNVs on FC patterns. Recently a ‘mirror’ effect of gene dosage on mean (global) connectivity was identified at the 16p11.2 proximal locus. This opposing effect was not observed for FC at the regional level. Regional FC alterations associated with 16p11.2 deletion included a thalamic-sensorimotor over-synchronization, weaker long-range functional coupling of frontal and temporoparietal regions, and disrupted connectivity of the posterior insula, pre-supplementary motor cortex, and basal ganglia (beta values > 1 [Figure 2]) [37,38]. Duplications at the 16p11.2 proximal locus, in contrast, had a smaller effect on connectivity and mostly involved the amygdala-hippocampus complex, cerebellum, and the basal ganglia.

Functional imaging studies at the 22q11.2 locus have shown evidence for large-scale network dysconnectivity, with underconnectivity in default mode, visual, and frontoparietal networks consistently observed in deletion carriers compared to controls [38–40]. Several studies also reported thalamocortical overconnectivity involving somatomotor regions and underconnectivity in frontoparietal associative networks, indicating that this effect maps onto large-scale resting-state networks with a dissociation along a sensory-associative hierarchy. The opposite effect was observed for the hippocampus in regards to somatomotor

and associative network connectivity, suggesting disruption of thalamic-hippocampal circuitry in 22q11 deletion carriers [38,41].

FC has also been investigated in WS using an *a priori* approach [17]. Given that the intraparietal sulcus has been previously found to be structurally and functionally abnormal in WS, the authors investigated whole-brain connectivity with this seed region. Compared to typically developing children, those with WS showed opposite FC patterns of the intraparietal sulcus with visual processing regions (underconnectivity) and with social processing regions (overconnectivity) [17]. Other CNVs have not yet been investigated with functional MRI; as such, the generalizability of these patterns to other CNVs is unknown.

There is evidence that FC alterations in CNVs such as 16p11.2 and 22q11.2 deletions delineate dimensions that generalize to idiopathic ASD and schizophrenia. The connectivity signatures of both 16p11.2 and 22q11.2 deletions showed similarities with dysconnectivity patterns of individuals with either idiopathic schizophrenia or autism, but not ADHD. Notably, individuals with FC patterns that more closely resembled FC signatures of deletion carriers showed more severe cognitive and behavioral symptoms. Regions showing the greatest FC similarities across both deletions and idiopathic psychiatric conditions included the thalamus, temporal pole, putamen, posterior insula, and above all the thalamus and somatomotor regions [38]. This pattern of findings is consistent with an emerging body of evidence for common neurobiological substrates of psychopathology (e.g., [42]).

Linking CNV-associated neuroimaging alterations to temporal and cytoarchitectural patterns of gene expression

Studies investigating the effects of CNVs on brain structure and function have provided a complex catalog of brain alteration patterns linked to different genomic loci. However, mechanisms linking CNVs to brain architecture remain largely unknown. Recent advances in large-scale, high-throughput transcriptomics, highlighted by the availability of brain-wide gene expression atlases such as the Allen Human Brain Atlas [43], have opened opportunities to study the relationship between temporal and spatial distribution of gene expression and macroscopic neuroimaging phenotypes. Studies have investigated how gene expression relates to independently measured functional connectivity [44], neuroanatomical hierarchy [45], and patterns of cortical alteration in idiopathic ASD [46] and schizophrenia [47]. However, to date, only two studies have investigated associations between human brain gene expression and CNV-associated neuroimaging alterations [38,48].

Seidlitz and colleagues linked structural MRI-derived cortical changes with spatial patterns of CNV gene expression. By studying multiple neurogenetic disorders known to increase the risk for one or more neurodevelopmental disorders, researchers revealed significant correlations between the spatial variation in cortical anatomy with the spatial expression of cell-type-specific patterns of CNV gene expression in neurotypical adults. This noninvasive, transcriptional vulnerability model provides a potential link between MRI-derived brain phenotypes and the underlying cell types and genomic mechanisms influencing neurogenetic disorders [48].

Moreau and colleagues showed a significant association between the functional connectivity signatures of two neuropsychiatric CNVs, deletions at 22q11.2 and 16p11.2, and the spatial expression patterns of genes encompassed in the respective genomic loci [38,48]. However, many genes outside these 2 loci also exhibited similar levels of association. This redundancy has been hypothesized to represent a factor underlying similarities between the two CNV FC signatures and may explain why many CNVs affect a similar range of neuropsychiatric symptoms.

While these studies show the potential of combined analysis of brain imaging and transcriptome data, further studies covering a broader landscape of CNVs, concomitant with spatio-temporal patterns of gene expression, are required to unveil the underlying mechanisms that regulate the mapping of genetic risks onto brain alterations and potential organizing principles of neurodevelopment.

The future of neuroimaging genomic research

Datasets currently available for the analysis of CNVs.—Studies on CNVs to date have been conducted either by recruiting clinically ascertained CNV carriers or by calling CNVs in unselected populations or (to a lesser extent) disease cohorts that were previously genotyped with the initial aim of conducting GWAS. While the latter strategy has enabled access to large sample sizes with a 0.5 to 3% rate of moderately to mildly deleterious CNVs, the former approach is the only way to obtain neuroimaging data in individuals with large and extreme effect-size variants. As an example, the low frequency of CNVs in the general population, such as in UK-Biobank [27,49,50], will provide limited power to individually study neuroimaging effects of large effect size CNVs because this healthy cohort of relatively high-functioning individuals includes very few participants with significant cognitive and behavioral deficits. The Adolescent Brain Cognitive Development Study (ABCD) [51] is a long-term prospective study of brain development, with around 10,000 children recruited between ages 9–10 and followed into early adulthood. ABCD is currently among the largest neuroimaging cohorts, and ongoing CNV identification will provide additional observations of CNV effects on neuroimaging traits in unselected populations. It also constitutes a more sociodemographically diverse cohort than those currently available, another urgent need in the field. Beyond unselected populations, however, large neuroimaging genomic datasets are almost non-existent in psychiatric cohorts. Currently, there are no autism cohorts and only a few small ($n < 100$) schizophrenia cohorts with such data. The European Autism Interventions - A Multicenter Study for Developing New Medications (EU-Aims) will be the first dataset with neuroimaging genomic data, including approximately 250 individuals with ASD. We are not aware of any ongoing large-scale neuroimaging genomic data collection in psychiatric cohorts; such cohorts would provide valuable insights into genetic effects on brain structural and functional architecture across the allelic frequency, as detailed below.

Developing new resources for the study of CNVs and rare genomic variants with large effect sizes

To increase our understanding of the effects of deleterious variants on brain architecture, efforts must be made to recruit individuals presenting with a broad spectrum of cognitive

deficits and neuropsychiatric symptoms. Based on previous studies [52–54], this ascertainment strategy would provide a 10 to 30-fold enrichment in large effect size variants, including CNVs and single nucleotide variants. Further enrichment would also include individuals selected on the basis of having a deleterious genomic variant. A genetics-first genome-wide cohort would provide a yield of developmental psychiatric CNVs approximately 100-fold higher compared to an unselected population [50]. As such, the burden of large effect-size CNVs in a cohort of 10000 individuals recruited through psychiatric, developmental pediatrics and genetic clinics would be equivalent to the mutational burden in 500,000 to 1,000,000 individuals from the general population. Genomics, neuroimaging, as well as dimensional neurobehavioral assessments in such a cross-disorder cohort would provide multiscale information unmatched by any current resources. It would provide a valuable resource for the fields of neuroimaging, genomics, and neurodevelopmental disorders. To achieve a multiscale and multimodal dataset while limiting cost, assessments could be aligned with those conducted in an unselected population to provide a larger group of unaffected individuals for comparison, thus ascertaining a broad spectrum of genomic and clinical variation.

Conclusion

Identifying gene functions that may mediate the effect of CNVs on neuroimaging traits and risk for psychiatric conditions will require genome-wide analyses of a large number of genomic variants that alter genes with a broad variety of functions. Neuroimaging studies in animal models of CNVs are also beginning to shed light on the pathophysiology underlying brain alterations detected in human CNV carriers, although very few studies to date have directly compared neuroimaging findings between CNV mouse models and humans [37,55,56]. Transitioning from the current candidate studies to genome-wide analyses of rare variants will require large-scale efforts ascertaining individuals enriched for high-risk variants across a broad spectrum of neuropsychiatric symptoms. While in the near future, datasets will likely remain underpowered for gene-based association studies, other strategies collapsing variants across molecular pathways and developmental processes (weighted burden) would provide significant insight into mechanisms underlying the effects of rare variants on the structure and function of the brain.

Collectively, the research presented here summarizes insights that CNVs can offer into fundamental principles of brain development, in the context of health and disease. Such genetics-first neuroimaging approaches, combined with top-down data-driven neuroimaging subtyping performed in idiopathic psychiatric conditions[1] will advance understanding of neural mechanisms of psychopathology.

Acknowledgement

We wish to thank Sophia Thomopoulos for her assistance with accessing effect size data from the published ENIGMA studies for Figure 2. We also thank the ENIGMA 22q11.2 Deletion Syndrome Working Group (<http://enigma.ini.usc.edu/ongoing/enigma-22q-working-group/>) and CNV Working Group members (<http://enigma.ini.usc.edu/ongoing/enigma-cnvr/>) for their contributions to these large-scale collaborative studies.

Funding

This work was supported by Calcul Quebec (<http://www.calculquebec.ca>) and Compute Canada (<http://www.computeCanada.ca>), the Brain Canada Multi-Investigator initiative, the Canadian Institutes of Health Research, CIHR_400528, The Institute of Data Valorization (IVADO) through the Canada First Research Excellence Fund, Healthy Brains for Healthy Lives through the Canada First Research Excellence Fund, and the National Institute of Mental Health (grants R01MH085953, R21MH116473, and 9U01MH119736-02).

Dr Jacquemont is a recipient of a Canada Research Chair in neurodevelopmental disorders, and a chair from the Jeanne et Jean Louis Levesque Foundation. Kuldeep Kumar was supported by The Institute of Data Valorization (IVADO) Postdoctoral Fellowship program, through the Canada First Research Excellence Fund.

Competing interests

Christopher Ching has received partial research support from Biogen, Inc. (Boston, USA) for work unrelated to the topic of this manuscript.

References

- Hong S-J, Vogelstein JT, Gozzi A, Bernhardt BC, Yeo BTT, Milham MP, Di Martino A: Toward Neurosubtypes in Autism. *Biol Psychiatry* 2020, 88:111–128. [PubMed: 32553193]
- Stefanik L, Erdman L, Ameis SH, Foussias G, Mulsant BH, Behdinan T, Goldenberg A, O'Donnell LJ, Voineskos AN: Brain-Behavior Participant Similarity Networks Among Youth and Emerging Adults with Schizophrenia Spectrum, Autism Spectrum, or Bipolar Disorder and Matched Controls. *Neuropsychopharmacology* 2018, 43:1180–1188. [PubMed: 29105664]
- Walter E, Mazaika PK, Reiss AL: Insights into brain development from neurogenetic syndromes: evidence from fragile X syndrome, Williams syndrome, Turner syndrome and velocardiofacial syndrome. *Neuroscience* 2009, 164:257–271. [PubMed: 19376197]
- Reiss AL, Eliez S, Schmitt JE, Patwardhan A, Haberecht M: Brain imaging in neurogenetic conditions: realizing the potential of behavioral neurogenetics research. *Ment Retard Dev Disabil Res Rev* 2000, 6:186–197. [PubMed: 10982496]
- Stein JL, Medland SE, Vasquez AA, Hibar DP, Senstad RE, Winkler AM, Toro R, Appel K, Bartecek R, Bergmann Ø, et al.: Identification of common variants associated with human hippocampal and intracranial volumes. *Nat Genet* 2012, 44:552–561. [PubMed: 22504417]
- Harms MP, Somerville LH, Ances BM, Andersson J, Barch DM, Bastiani M, Bookheimer SY, Brown TB, Buckner RL, Burgess GC, et al.: Extending the Human Connectome Project across ages: Imaging protocols for the Lifespan Development and Aging projects. *Neuroimage* 2018, 183:972–984. [PubMed: 30261308]
- Thompson PM, Jahanshad N, Ching CRK, Salminen LE, Thomopoulos SI, Bright J, Baune BT, Bertolín S, Bralten J, Bruin WB, et al.: ENIGMA and global neuroscience: A decade of large-scale studies of the brain in health and disease across more than 40 countries. *Transl Psychiatry* 2020, 10:100. [PubMed: 32198361]
- Elliott LT, Sharp K, Alfaro-Almagro F, Shi S, Miller KL, Douaud G, Marchini J, Smith SM: Genome-wide association studies of brain imaging phenotypes in UK Biobank. *Nature* 2018, 562:210–216. [PubMed: 30305740]
- Littlejohns TJ, Holliday J, Gibson LM, Garratt S, Oesingmann N, Alfaro-Almagro F, Bell JD, Boulwood C, Collins R, Conroy MC, et al.: The UK Biobank imaging enhancement of 100,000 participants: rationale, data collection, management and future directions. *Nat Commun* 2020, 11:2624. [PubMed: 32457287]
- Martin-Brevet S, Rodríguez-Herreros B, Nielsen JA, Moreau C, Modenato C, Maillard AM, Pain A, Richetin S, Jønch AE, Qureshi AY, et al.: Quantifying the Effects of 16p11.2 Copy Number Variants on Brain Structure: A Multisite Genetic-First Study. *Biol Psychiatry* 2018, 84:253–264. [PubMed: 29778275]
- Sønderby IE, Gústafsson Ó, Doan NT, Hibar DP, Martin-Brevet S, Abdellaoui A, Ames D, Amunts K, Andersson M, Armstrong NJ, et al.: Dose response of the 16p11.2 distal copy number variant on intracranial volume and basal ganglia. *Mol Psychiatry* 2020, 25:584–602. [PubMed: 30283035]

12. Writing Committee for the ENIGMA-CNV Working Group, van der Meer D, S nderby IE, Kaufmann T, Walters GB, Abdellaoui A, Ames D, Amunts K, Andersson M, Armstrong NJ, et al.: Association of Copy Number Variation of the 15q11.2 BP1-BP2 Region With Cortical and Subcortical Morphology and Cognition. *JAMA Psychiatry* 2019. ● This study from the ENIGMA CNV working group investigates the effect of deletion and duplication at 15q11.2 BP1-BP2 on cortical and subcortical brain morphology and cognitive performance using a discovery/replication design with more than 45,000 individuals from 38 datasets (203 individuals with a 15q11.2 deletion, 45,247 non-carriers, and 306 duplication carriers). The authors report a smaller nucleus accumbens, smaller surface area, and thicker cortices for deletion carriers compared to non-carriers, with regional effects localized in the frontal lobe, anterior cingulate, and pre/postcentral gyri. Also, widespread poorer cognitive performance is observed for deletion carriers compared with non-carriers. Highlighting the importance of genetic-first studies, the authors report that the pattern of results fits well with known molecular functions of the genes in the 15q11.2 BP1-BP2 region and suggests the involvement of these genes in neuronal plasticity and cortical development.
13. Rogdaki M, Gudbrandsen M, McCutcheon RA, Blackmore CE, Brugger S, Ecker C, Craig MC, Daly E, Murphy DGM, Howes O: Magnitude and heterogeneity of brain structural abnormalities in 22q11.2 deletion syndrome: a meta-analysis. *Mol Psychiatry* 2020, doi:10.1038/s41380-019-0638-3.
14. Sun D, Ching CRK, Lin A, Forsyth JK, Kushan L, Vajdi A, Jalbrzikowski M, Hansen L, Villalon-Reina JE, Qu X, et al.: Large-scale mapping of cortical alterations in 22q11.2 deletion syndrome: Convergence with idiopathic psychosis and effects of deletion size. *Mol Psychiatry* 2018, doi:10.1038/s41380-018-0078-5.
15. Ching CRK, Gutman BA, Sun D, Villalon Reina J, Ragothaman A, Isaev D, Zavaliangos-Petropulu A, Lin A, Jonas RK, Kushan L, et al.: Mapping Subcortical Brain Alterations in 22q11.2 Deletion Syndrome: Effects of Deletion Size and Convergence With Idiopathic Neuropsychiatric Illness. *Am J Psychiatry* 2020,
16. Villal n-Reina JE, Mart nez K, Qu X, Ching CRK, Nir TM, Kothapalli D, Corbin C, Sun D, Lin A, Forsyth JK, et al.: Altered white matter microstructure in 22q11.2 deletion syndrome: a multisite diffusion tensor imaging study. *Mol Psychiatry* 2019, doi:10.1038/s41380-019-0450-0.
17. Gregory MD, Mervis CB, Elliott ML, Kippenhan JS, Nash T, B Czarapata J, Prabhakaran R, Roe K, Eisenberg DP, Kohn PD, et al.: Williams syndrome hemideletion and LIMK1 variation both affect dorsal stream functional connectivity. *Brain* 2019, 142:3963–3974. [PubMed: 31687737]
18. Fan CC, Schork AJ, Brown TT, Spencer BE, Akshoomoff N, Chen C-H, Kuperman JM, Hagler DJ Jr, Steen VM, Le Hellard S, et al.: Williams Syndrome neuroanatomical score associates with GTF2IRD1 in large-scale magnetic resonance imaging cohorts: a proof of concept for multivariate endophenotypes. *Transl Psychiatry* 2018, 8:114. [PubMed: 29884845]
19. Jacquemont S, Reymond A, Zufferey F, Harewood L, Walters RG, Kutalik Z, Martinet D, Shen Y, Valsesia A, Beckmann ND, et al.: Mirror extreme BMI phenotypes associated with gene dosage at the chromosome 16p11.2 locus. *Nature* 2011, 478:97–102. [PubMed: 21881559]
20. C rdenas-de-la-Parra A, Martin-Brevet S, Moreau C, Rodr guez-Herreros B, Fonov VS, Maillard AM, Z rcher NR, 16p11.2 European Consortium, Hadjikhani N, Beckmann JS, et al.: Developmental trajectories of neuroanatomical alterations associated with the 16p11.2 Copy Number Variations. *Neuroimage* 2019, 203:116155. [PubMed: 31494251]
21. Lin A, Ching CRK, Vajdi A, Sun D, Jonas RK, Jalbrzikowski M, Kushan-Wells L, Pacheco Hansen L, Krikorian E, Gutman B, et al.: Mapping 22q11.2 Gene Dosage Effects on Brain Morphometry. *J Neurosci* 2017, 37:6183–6199. [PubMed: 28536274]
22. Raznahan A, Lee NR, Greenstein D, Wallace GL, Blumenthal JD, Clasen LS, Giedd JN: Globally Divergent but Locally Convergent X- and Y-Chromosome Influences on Cortical Development. *Cerebral Cortex* 2016, 26:70–79. [PubMed: 25146371]
23. Silva AI, Ulfarsson MO, Stefansson H, Gustafsson O, Walters GB, Linden DEJ, Wilkinson LS, Drakesmith M, Owen MJ, Hall J, et al.: Reciprocal White Matter Changes Associated With Copy Number Variation at 15q11.2 BP1-BP2: A Diffusion Tensor Imaging Study. *Biol Psychiatry* 2018, doi:10.1016/j.biopsych.2018.11.004.

24. Stefansson H, Meyer-Lindenberg A, Steinberg S, Magnusdottir B, Morgen K, Arnarsdottir S, Bjornsdottir G, Walters GB, Jonsdottir GA, Doyle OM, et al.: CNVs conferring risk of autism or schizophrenia affect cognition in controls. *Nature* 2014, 505:361–366. [PubMed: 24352232]
25. Jønch AE, Douard E, Moreau C, Van Dijck A, Passeggeri M, Kooy F, Puechberty J, Campbell C, Sanlaville D, Lefroy H, et al.: Estimating the effect size of the 15Q11.2 BP1-BP2 deletion and its contribution to neurodevelopmental symptoms: recommendations for practice. *J Med Genet* 2019, 56:701–710. [PubMed: 31451536]
26. Grasby KL, Jahanshad N, Painter JN, Colodro-Conde L, Bralten J, Hibar DP, Lind PA, Pizzagalli F, Ching CRK, McMahon MAB, et al.: The genetic architecture of the human cerebral cortex. *Science* 2020, 367. ● The largest genome-wide meta-analysis of brain MRI measures including over 51,000 individuals and identifying 199 loci influencing cortical surface area and thickness. Genetic variants accounted for a significant proportion of the variance in brain measures with surface area and thickness of the cortex showing a negative genetic correlation, indicating opposing genetic influences. Significant genetic correlations between brain structure and cognitive functioning, educational attainment, neurological and psychiatric illness provide additional evidence that MRI-derived brain measures serve as endophenotypes along the continuum from variations in genes to brain structure to behavior.
27. Warland A, Kendall KM, Rees E, Kirov G, Caseras X: Schizophrenia-associated genomic copy number variants and subcortical brain volumes in the UK Biobank. *Mol Psychiatry* 2019, doi:10.1038/s41380-019-0355-y. ● This study investigates subcortical brain volume differences between unaffected participants from UK Biobank, carrying at least one CNV associated with schizophrenia and non-carriers. They asked whether unaffected CNV carriers could present similar brain alterations to those previously observed in idiopathic psychiatric samples. Results showed that CNV carriers exhibit reduced volume in three areas previously reported as smaller in schizophrenia: the thalamus, the hippocampus and the accumbens. Furthermore, they reported that thalamic and hippocampal volumes were mediating the relationship between cognitive performance (Fluid Intelligence) and CNV status, suggesting that these rare genetic variants may represent intermediate brain phenotype for schizophrenia.
28. Drakesmith M, Parker GD, Smith J, Linden SC, Rees E, Williams N, Owen MJ, van den Bree M, Hall J, Jones DK, et al.: Genetic risk for schizophrenia and developmental delay is associated with shape and microstructure of midline white-matter structures. *Transl Psychiatry* 2019, 9:102. [PubMed: 30804328] ● A novel approach in which penetrance for schizophrenia and developmental delay was calculated in carriers of different CNVs and related to multimodal MRI measures of gray and white matter (morphometry, DTI, NODDI, tractography and shape analysis). Penetrance was associated with subtle convergent features of medial white matter structures that may explain cognitive and intellectual impairments contributing to risk for schizophrenia and intellectual disability. This study included only 21 adults with a variety of CNVs (22q11.2, 15q11.2, 1q21.1, 16p11.2 and 17q12) and 15 matched controls; as such, future studies employing similar multimodal techniques with larger samples are needed to validate these findings.
29. Huguet G, Schramm C, Douard E, Jiang L, Labbe A, Tihy F, Mathonnet G, Nizard S, Lemyre E, Mathieu A, et al.: Measuring and Estimating the Effect Sizes of Copy Number Variants on General Intelligence in Community-Based Samples. *JAMA Psychiatry* 2018, doi:10.1001/jamapsychiatry.2018.0039.
30. van Erp TGM, Walton E, Hibar DP, Schmaal L, Jiang W, Glahn DC, Pearlson GD, Yao N, Fukunaga M, Hashimoto R, et al.: Cortical Brain Abnormalities in 4474 Individuals With Schizophrenia and 5098 Control Subjects via the Enhancing Neuro Imaging Genetics Through Meta Analysis (ENIGMA) Consortium. *Biol Psychiatry* 2018, 84:644–654. [PubMed: 29960671]
31. van Rooij D, Anagnostou E, Arango C, Auzias G, Behrmann M, Busatto GF, Calderoni S, Daly E, Deruelle C, Di Martino A, et al.: Cortical and Subcortical Brain Morphometry Differences Between Patients With Autism Spectrum Disorder and Healthy Individuals Across the Lifespan: Results From the ENIGMA ASD Working Group. *Am J Psychiatry* 2018, 175:359–369. [PubMed: 29145754]
32. Van Erp TGM, Walton E, Hibar DP, Schmaal L, Jiang W, Glahn DC, Pearlson GD, Yao N, Fukunaga M, Hashimoto R, et al.: Cortical brain abnormalities in 4474 individuals with schizophrenia and 5098 control subjects via the Enhancing Neuro Imaging Genetics Through Meta Analysis (ENIGMA) Consortium. *Biol Psychiatry* 2018, 84:644–654. [PubMed: 29960671]

33. van Erp TGM, Hibar DP, Rasmussen JM, Glahn DC, Pearlson GD, Andreassen OA, Agartz I, Westlye LT, Haukvik UK, Dale AM, et al.: Subcortical brain volume abnormalities in 2028 individuals with schizophrenia and 2540 healthy controls via the ENIGMA consortium. *Mol Psychiatry* 2016, 21:585. [PubMed: 26283641]
34. Kelly S, Jahanshad N, Zalesky A, Kochunov P, Agartz I, Alloza C, Andreassen OA, Arango C, Banaj N, Bouix S, et al.: Widespread white matter microstructural differences in schizophrenia across 4322 individuals: results from the ENIGMA Schizophrenia DTI Working Group. *Mol Psychiatry* 2018, 23:1261–1269. [PubMed: 29038599]
35. King JB, Prigge MBD, King CK, Morgan J, Weathersby F, Fox JC, Dean DC 3rd, Freeman A, Villaruz JAM, Kane KL, et al.: Generalizability and reproducibility of functional connectivity in autism. *Mol Autism* 2019, 10:27. [PubMed: 31285817]
36. Lee PH, Anttila V, Won H, Feng Y-CA, Rosenthal J, Zhu Z, Tucker-Drob EM, Nivard MG, Grotzinger AD, Posthuma D, et al.: Genomic Relationships, Novel Loci, and Pleiotropic Mechanisms across Eight Psychiatric Disorders. *Cell* 2019, 179:1469–1482.e11. [PubMed: 31835028]
37. Bertero A, Liska A, Pagani M, Parolisi R, Masferrer ME, Gritti M, Pedrazzoli M, Galbusera A, Sarica A, Cerasa A, et al.: Autism-associated 16p11.2 microdeletion impairs prefrontal functional connectivity in mouse and human. *Brain* 2018, doi:10.1093/brain/awy111. ● This study involved a novel cross species approach in which altered prefrontal resting state functional MRI connectivity associated with cognitive impairment in human 16p11.2 deletion carriers overlapped with similar functional deficits in a mouse model with the same genetic deletion. This one of the only translational studies to date to investigate functional connectivity in both mouse and humans with the same genetic defect. As such, these findings provide insights into the fronto-thalamic wiring defects and neural desynchronization underlying a syndromic developmental disorder.
38. Moreau CA, Urchs SGW, Kuldeep K, Orban P, Schramm C, Dumas G, Labbe A, Huguet G, Douard E, Quirion P-O, et al.: Mutations associated with neuropsychiatric conditions delineate functional brain connectivity dimensions contributing to autism and schizophrenia. *Nat Commun* 2020, 11:1–12. [PubMed: 31911652]
39. Mattiaccio LM, Coman IL, Schreiner MJ, Antshel KM, Fremont WP, Bearden CE, Kates WR: Atypical functional connectivity in resting-state networks of individuals with 22q11.2 deletion syndrome: associations with neurocognitive and psychiatric functioning. *J Neurodev Disord* 2016, 8:2. [PubMed: 26855683]
40. Schreiner M, Forsyth JK, Karlsgodt KH, Anderson AE, Hirsh N, Kushan L, Uddin LQ, Mattiaccio L, Coman IL, Kates WR, et al.: Intrinsic Connectivity Network-Based Classification and Detection of Psychotic Symptoms in Youth With 22q11.2 Deletions. *Cereb Cortex* 2017, 27:3294–3306. [PubMed: 28383675]
41. Schleifer C, Lin A, Kushan L, Lisa Ji J, Yang G, Bearden CE, Anticevic A: Dissociable Disruptions in Thalamic and Hippocampal Resting-State Functional Connectivity in Youth with 22q11.2 Deletions. *J Neurosci* 2018, doi:10.1523/JNEUROSCI.3470-17.2018.
42. Goodkind M, Eickhoff SB, Oathes DJ, Jiang Y, Chang A, Jones-Hagata LB, Ortega BN, Zaiko YV, Roach EL, Korgaonkar MS, et al.: Identification of a common neurobiological substrate for mental illness. *JAMA Psychiatry* 2015, 72:305–315. [PubMed: 25651064]
43. Hawrylycz M, Miller JA, Menon V, Feng D, Dolbeare T, Guillozet-Bongaarts AL, Jegga AG, Aronow BJ, Lee C-K, Bernard A, et al.: Canonical genetic signatures of the adult human brain. *Nat Neurosci* 2015, 18:1832–1844. [PubMed: 26571460]
44. Richiardi J, Altmann A, Milazzo A-C, Chang C, Chakravarty MM, Banaschewski T, Barker GJ, Bokde ALW, Bromberg U, Büchel C, et al.: BRAIN NETWORKS. Correlated gene expression supports synchronous activity in brain networks. *Science* 2015, 348:1241–1244. [PubMed: 26068849]
45. Burt JB, Demirta M, Eckner WJ, Navejar NM, Ji JL, Martin WJ, Bernacchia A, Anticevic A, Murray JD: Hierarchy of transcriptomic specialization across human cortex captured by structural neuroimaging topography. *Nat Neurosci* 2018, 21:1251–1259. [PubMed: 30082915]
46. Romero-Garcia R, Warrier V, Bullmore ET, Baron-Cohen S, Bethlehem RAI: Synaptic and transcriptionally downregulated genes are associated with cortical thickness differences in autism. *Mol Psychiatry* 2018, doi:10.1038/s41380-018-0023-7.

47. Morgan SE, Seidlitz J, Whitaker KJ, Romero-Garcia R, Clifton NE, Scarpazza C, van Amelsvoort T, Marcellis M, van Os J, Donohoe G, et al.: Cortical patterning of abnormal morphometric similarity in psychosis is associated with brain expression of schizophrenia-related genes. *Proc Natl Acad Sci U S A* 2019, 116:9604–9609. [PubMed: 31004051] ● This study used a multilevel approach to link MRI-derived brain alterations in schizophrenia to publicly available transcriptomic data from AHBA brain-wide gene expression. The psychosis-related brain alterations were spatially correlated with genes previously associated with schizophrenia and antipsychotic treatments. The study highlights how the combined analysis of neuroimaging and gene expression data may provide insights into factors driving structural brain network changes mediating the genetic risk for schizophrenia.
48. Seidlitz J, Nadig A, Liu S, Bethlehem RAI, Vértes PE, Morgan SE, Váša F, Romero-Garcia R, Lalonde FM, Clasen LS, et al.: Transcriptomic and cellular decoding of regional brain vulnerability to neurogenetic disorders. *Nature Communications* 2020, 11. ● Investigators present a transcriptional vulnerability model linking MRI-derived brain alterations associated with risk for neurodevelopmental disorders to underlying gene expression. Structural brain alterations from six neurogenetic disorders were correlated with cell-type-specific patterns of CNV gene expression in neurotypical adults, providing candidate cell type and genomic mechanisms influencing brain development both in typical and neurodevelopmental disorders.
49. Kendall KM, Bracher-Smith M, Fitzpatrick H, Lynham A, Rees E, Escott-Price V, Owen MJ, O'Donovan MC, Walters JTR, Kirov G: Cognitive performance and functional outcomes of carriers of pathogenic copy number variants: analysis of the UK Biobank. *Br J Psychiatry* 2019, 214:297–304. [PubMed: 30767844]
50. Huguet G, Schramm C, Douard E, Petra T, Main A, Monin P, England J, Jizi K, Renne T, Poirier M, et al.: Genome wide analysis of gene dosage in 24,092 individuals shows that 10,000 genes modulate cognitive ability. *Cold Spring Harbor Laboratory* 2020, doi:10.1101/2020.04.03.024554.
51. Hagler DJ Jr, Hatton S, Cornejo MD, Makowski C, Fair DA, Dick AS, Sutherland MT, Casey BJ, Barch DM, Harms MP, et al.: Image processing and analysis methods for the Adolescent Brain Cognitive Development Study. *Neuroimage* 2019, 202:116091. [PubMed: 31415884]
52. Moreno-De-Luca D, Sanders SJ, Willsey AJ, Mulle JG, Lowe JK, Geschwind DH, State MW, Martin CL, Ledbetter DH: Using large clinical data sets to infer pathogenicity for rare copy number variants in autism cohorts. *Mol Psychiatry* 2013, 18:1090–1095. [PubMed: 23044707]
53. Marshall CR, Howrigan DP, Merico D, Thiruvahindrapuram B, Wu W, Greer DS, Antaki D, Shetty A, Holmans PA, Pinto D, et al.: Contribution of copy number variants to schizophrenia from a genome-wide study of 41,321 subjects. *Nat Genet* 2017, 49:27–35. [PubMed: 27869829]
54. Tammimies K, Marshall CR, Walker S, Kaur G, Thiruvahindrapuram B, Lionel AC, Yuen RKC, Uddin M, Roberts W, Weksberg R, et al.: Molecular Diagnostic Yield of Chromosomal Microarray Analysis and Whole-Exome Sequencing in Children With Autism Spectrum Disorder. *JAMA* 2015, 314:895–903. [PubMed: 26325558]
55. Bristow GC, Thomson DM, Openshaw RL, Mitchell EJ, Pratt JA, Dawson N, Morris BJ: 16p11 Duplication Disrupts Hippocampal-Orbitofrontal-Amygdala Connectivity, Revealing a Neural Circuit Endophenotype for Schizophrenia. *Cell Rep* 2020, 31:107536. [PubMed: 32320645]
56. Ellegood J, Anagnostou E, Babineau BA, Crawley JN, Lin L, Genestine M, DiCicco-Bloom E, Lai JKY, Foster JA, Peñagarikano O, et al.: Clustering autism: using neuroanatomical differences in 26 mouse models to gain insight into the heterogeneity. *Mol Psychiatry* 2015, 20:118–125. [PubMed: 25199916]
57. van der Lee SJ, Knol MJ, Chauhan G, Satizabal CL, Smith AV, Hofer E, Bis JC, Hibar DP, Hilal S, van den Akker EB, et al.: A genome-wide association study identifies genetic loci associated with specific lobar brain volumes. *Commun Biol* 2019, 2:285. [PubMed: 31396565]
58. Psaty Bruce M, O'Donnell Christopher J, Vilmundur Gudnason, Lunetta Kathryn L, Folsom Aaron R, Rotter Jerome I, Uitterlinden André G, Harris Tamara B, Witteman Jacqueline CM, Eric Boerwinkle: Cohorts for Heart and Aging Research in Genomic Epidemiology (CHARGE) Consortium. *Circ Cardiovasc Genet* 2009, 2:73–80. [PubMed: 20031568]
59. Petersen RC, Aisen PS, Beckett LA, Donohue MC, Gamst AC, Harvey DJ, Jack CR Jr, Jagust WJ, Shaw LM, Toga AW, et al.: Alzheimer's Disease Neuroimaging Initiative (ADNI): clinical characterization. *Neurology* 2010, 74:201–209. [PubMed: 20042704]

60. Schumann G, Loth E, Banaschewski T, Barbot A, Barker G, Büchel C, Conrod PJ, Dalley JW, Flor H, Gallinat J, et al.: The IMAGEN study: reinforcement-related behaviour in normal brain function and psychopathology. *Mol Psychiatry* 2010, 15:1128–1139. [PubMed: 21102431]
61. Simons Vip Consortium: Simons Variation in Individuals Project (Simons VIP): a genetics-first approach to studying autism spectrum and related neurodevelopmental disorders. *Neuron* 2012, 73:1063–1067. [PubMed: 22445335]
62. Van Essen DC, Ugurbil K, Auerbach E, Barch D, Behrens TEJ, Bucholz R, Chang A, Chen L, Corbetta M, Curtiss SW, et al.: The Human Connectome Project: a data acquisition perspective. *Neuroimage* 2012, 62:2222–2231. [PubMed: 22366334]
63. Holmes AJ, Hollinshead MO, O’Keefe TM, Petrov VI, Fariello GR, Wald LL, Fischl B, Rosen BR, Mair RW, Roffman JL, et al.: Brain Genomics Superstruct Project initial data release with structural, functional, and behavioral measures. *Sci Data* 2015, 2:150031. [PubMed: 26175908]
64. Hibar DP, Stein JL, Renteria ME, Arias-Vasquez A, Desrivieres S, Jahanshad N, Toro R, Wittfeld K, Abramovic L, Andersson M, et al.: Common genetic variants influence human subcortical brain structures. *Nature* 2015, 520:224–229. [PubMed: 25607358]
65. Wang L, Alpert KI, Calhoun VD, Cobia DJ, Keator DB, King MD, Kogan A, Landis D, Tallis M, Turner MD, et al.: SchizConnect: Mediating neuroimaging databases on schizophrenia and related disorders for large-scale integration. *Neuroimage* 2016, 124:1155–1167. [PubMed: 26142271]
66. Jernigan TL, Brown TT, Hagler DJ Jr, Akshoomoff N, Bartsch H, Newman E, Thompson WK, Bloss CS, Murray SS, Schork N, et al.: The Pediatric Imaging, Neurocognition, and Genetics (PING) Data Repository. *Neuroimage* 2016, 124:1149–1154. [PubMed: 25937488]
67. Loth E, Charman T, Mason L, Tillmann J, Jones EJJ, Wooldridge C, Ahmad J, Auyeung B, Brogna C, Ambrosino S, et al.: The EU-AIMS Longitudinal European Autism Project (LEAP): design and methodologies to identify and validate stratification biomarkers for autism spectrum disorders. *Mol Autism* 2017, 8:24. [PubMed: 28649312]
68. Casey BJ, Cannonier T, Conley MI, Cohen AO, Barch DM, Heitzeg MM, Soules ME, Teslovich T, Dellarco DV, Garavan H, et al.: The Adolescent Brain Cognitive Development (ABCD) study: Imaging acquisition across 21 sites. *Dev Cogn Neurosci* 2018, 32:43–54. [PubMed: 29567376]
69. Miller KL, Alfaro-Almagro F, Bangerter NK, Thomas DL, Yacoub E, Xu J, Bartsch AJ, Jbabdi S, Sotiropoulos SN, Andersson JLR, et al.: Multimodal population brain imaging in the UK Biobank prospective epidemiological study. *Nat Neurosci* 2016, 19:1523–1536. [PubMed: 27643430]
70. Bycroft C, Freeman C, Petkova D, Band G, Elliott LT, Sharp K, Motyer A, Vukcevic D, Delaneau O, O’Connell J, et al.: The UK Biobank resource with deep phenotyping and genomic data. *Nature* 2018, 562:203–209. [PubMed: 30305743]
71. Schmaal L, Hibar DP, Sämann PG, Hall GB, Baune BT, Jahanshad N, Cheung JW, van Erp TGM, Bos D, Ikram MA, et al.: Cortical abnormalities in adults and adolescents with major depression based on brain scans from 20 cohorts worldwide in the ENIGMA Major Depressive Disorder Working Group. *Mol Psychiatry* 2017, 22:900–909. [PubMed: 27137745]
72. Boedhoe PSW, Schmaal L, Abe Y, Alonso P, Ameis SH, Anticevic A, Arnold PD, Batistuzzo MC, Benedetti F, Beucke JC, et al.: Cortical Abnormalities Associated With Pediatric and Adult Obsessive-Compulsive Disorder: Findings From the ENIGMA Obsessive-Compulsive Disorder Working Group. *Am J Psychiatry* 2018, 175:453–462. [PubMed: 29377733]
73. Hibar DP, Westlye LT, Doan NT, Jahanshad N, Cheung JW, Ching CRK, Versace A, Bilderbeck AC, Uhlmann A, Mwangi B, et al.: Cortical abnormalities in bipolar disorder: an MRI analysis of 6503 individuals from the ENIGMA Bipolar Disorder Working Group. *Mol Psychiatry* 2018, 23:932–942. [PubMed: 28461699]
74. Hoogman M, Muetzel R, Guimaraes JP, Shumskaya E, Mennes M, Zwiers MP, Jahanshad N, Sudre G, Wolfers T, Earl EA, et al.: Brain Imaging of the Cortex in ADHD: A Coordinated Analysis of Large-Scale Clinical and Population-Based Samples. *Am J Psychiatry* 2019, 176:531–542. [PubMed: 31014101]
75. Modenato C, Kumar K, Moreau C, Martin-Brevet S, Huguet G, Schramm C, Martineau J-L, Martin C-O, Younis N, Tamer P, et al.: Neuropsychiatric copy number variants exert shared effects on human brain structure. *Genetic and Genomic Medicine* 2020, doi:10.1101/2020.04.15.20056531.

76. Hoogman M, Bralten J, Hibar DP, Mennes M, Zwiers MP, Schweren LSJ, van Hulzen KJE, Medland SE, Shumskaya E, Jahanshad N, et al.: Subcortical brain volume differences in participants with attention deficit hyperactivity disorder in children and adults: a cross-sectional mega-analysis. *Lancet Psychiatry* 2017, 4:310–319. [PubMed: 28219628]
77. Hibar DP, Westlye LT, van Erp TGM, Rasmussen J, Leonardo CD, Faskowitz J, Haukvik UK, Hartberg CB, Doan NT, Agartz I, et al.: Subcortical volumetric abnormalities in bipolar disorder. *Mol Psychiatry* 2016, 21:1710–1716. [PubMed: 26857596]
78. Schmaal L, Veltman DJ, van Erp TGM, Sämann PG, Frodl T, Jahanshad N, Loehrer E, Tiemeier H, Hofman A, Niessen WJ, et al.: Subcortical brain alterations in major depressive disorder: findings from the ENIGMA Major Depressive Disorder working group. *Mol Psychiatry* 2016, 21:806–812. [PubMed: 26122586]
79. Boedhoe PSW, Schmaal L, Abe Y, Ameis SH, Arnold PD, Batistuzzo MC, Benedetti F, Beucke JC, Bollettini I, Bose A, et al.: Distinct Subcortical Volume Alterations in Pediatric and Adult OCD: A Worldwide Meta- and Mega-Analysis. *Am J Psychiatry* 2017, 174:60–69. [PubMed: 27609241]

Text Box 1.**Why study neuroimaging in CNVs?**

There is a consensus that substantial heterogeneity underlies the neurobiology of developmental psychiatric conditions such as autism and schizophrenia [1,2].

Neuroimaging has been used to characterize atypical brain patterns in idiopathic psychiatric conditions and findings have highlighted small effect sizes and variability across studies, likely due to neurobiological heterogeneity. As such, it has become increasingly clear that stratification at the molecular, and brain network level is a prerequisite for identifying mechanisms in behaviorally defined conditions.

The study of brain alterations associated with specific genomic disorders (large effect size variants) offer a powerful tool for investigating gene–brain–behavior relationships in humans. Specifically, neuroimaging studies of CNVs: 1) provide intermediate phenotypes on the causal pathways between variants and cognition 2) offer a window into potential shared biological mechanisms between these highly penetrant large-effect mutations, where the molecular basis is known, and idiopathic (behaviorally defined) neuropsychiatric disorders; 3) can shed light on fundamental principles of brain development and help dissect the heterogeneity of neuropsychiatric disorders.

Definitions**Pathogenic CNV:**

A CNV of large effect size on neurodevelopment which contributes substantially to the neurodevelopmental symptoms of a patient. Such variants are also referred to as “clinically significant”.

Gene dosage effect:

Effects related to a change in the number of genomic copies (deletions or duplications).

Surface area:

As with cortical thickness, semi-automated MRI processing techniques can be used to estimate the surface area of the cortical mantle and have been widely used to study brain development in healthy and clinical populations. MRI-derived measures of surface area are thought to be driven by the number of cortical columns and are likely under differential genetic control than cortical thickness.

Cortical thickness:

Measures of local thickness of the cerebral cortex can be obtained from widely used (and histologically validated) MRI processing techniques that measure the distance between the pial surface and gray/white matter boundary beneath the cortical ribbon. Local thickness measures are thought to vary with the number of cells within the cortical column, where thickness decreases from childhood onward.

Diffusion tensor imaging (DTI):

A widely used method to infer the underlying microstructural organization of brain tissue by quantifying the local direction and magnitude of water diffusion, especially in white matter.

Fractional anisotropy (FA):

A scalar measure derived from the DTI model that provides the degree of anisotropy in a given region and has been related to degree of axonal packing.

Mean Diffusivity (MD):

Another scalar measure from DTI that quantifies the total velocity of diffusion, a signal that has been tied to tissue cellularity, edema and necrosis.

Resting-state functional connectivity:

Resting-state functional magnetic resonance imaging (rs-fMRI) captures fluctuations of blood oxygenation as an indirect measure of neural activity across brain areas when no explicit task is performed. Functional connectivity represents the synchronization of oxygenation fluctuation between different neuroanatomical regions. Each connection value is measured by the correlation of low-frequency activities between 2 regions. Robust functional brain networks measured by rs-fMRI are also recapitulated by spatial patterns of gene expression in the adult brain.

Global and regional functional connectivity (FC):

Global FC represents the mean value of connectivity strength across all regions in the brain. Regional FC is the connectivity between a given region and the rest of the brain.

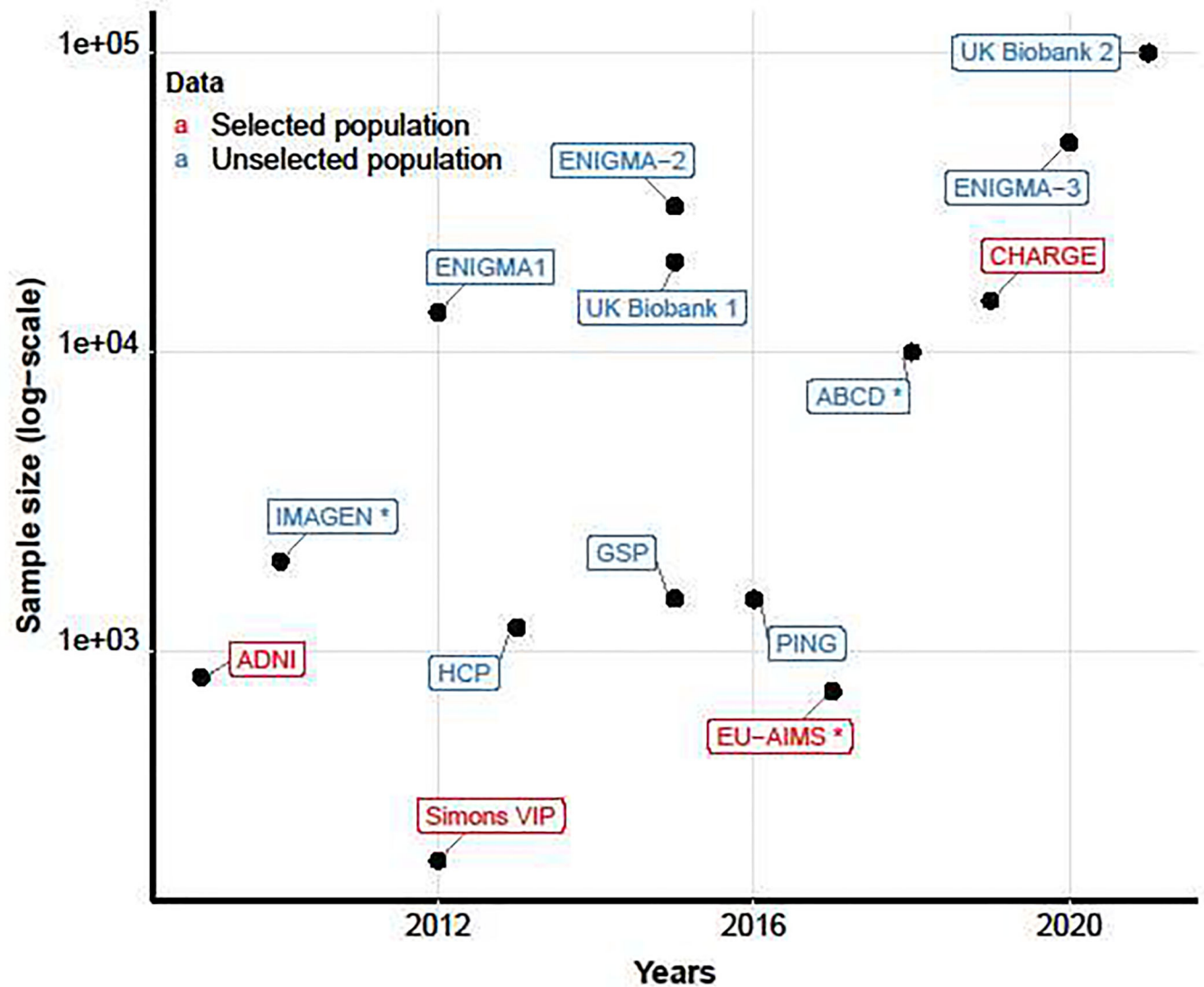
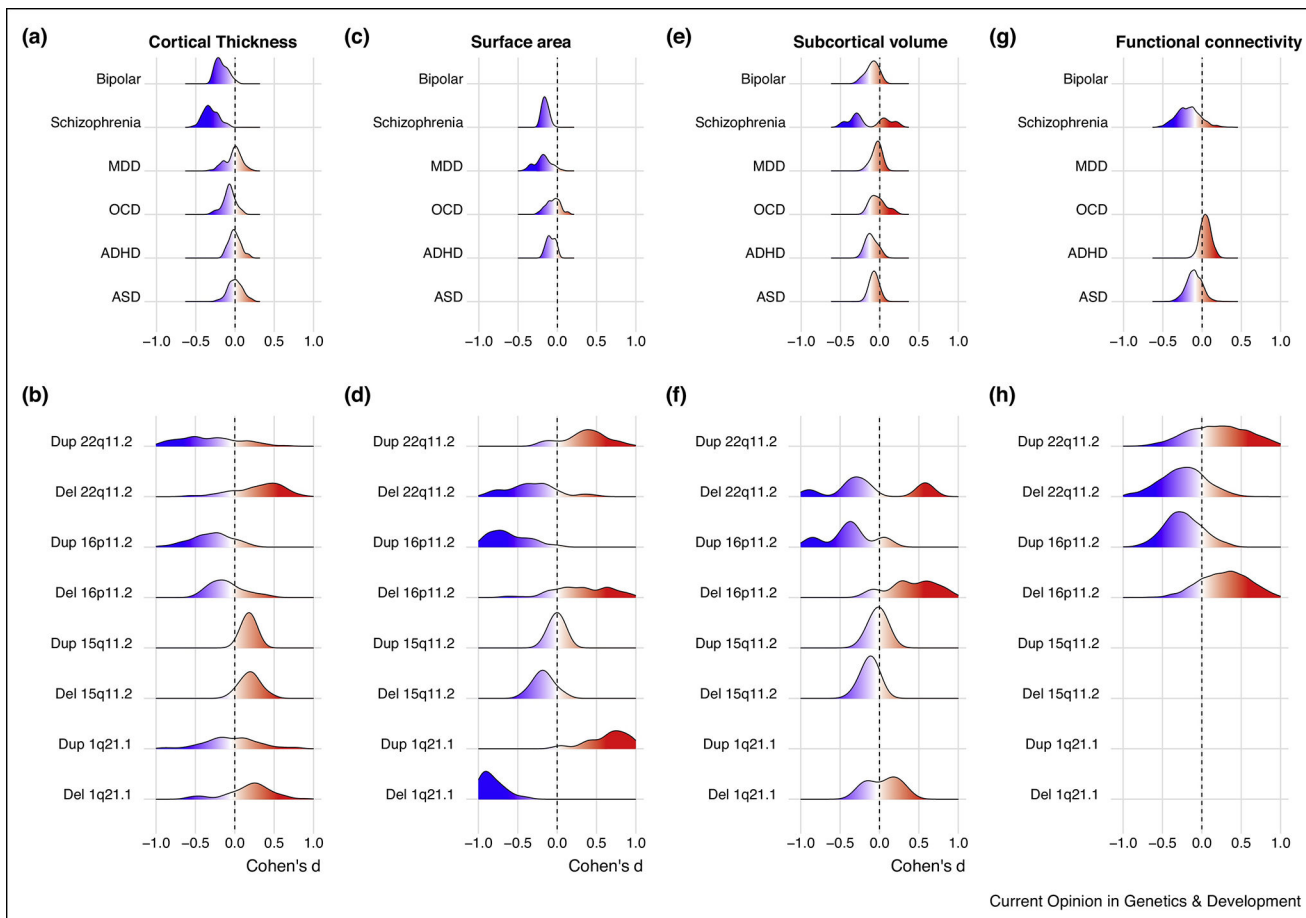


Figure 1.

Collection of genomic and brain imaging data has been exponential in the past 5 years. Cohorts for Heart and Aging Research in Genomic Epidemiology: CHARGE [57,58]; Alzheimer's Disease Neuroimaging Initiative: ADNI [59]; IMAGEN [60]; Simons Variation in Individuals Project: Simons VIP [61]; Enhancing Neuro Imaging Genetics through Meta-Analysis: ENIGMA 1 [5]; Human Connectome Project (HCP [62]; Brain Genomics Superstruct Project: GSP [63]; ENIGMA 2: [64]; SchizConnect [65]; UK-Biobank [9]; The Pediatric Imaging, Neurocognition, and Genetics: PING [66]; European Autism Interventions A Multicentre Study for Developing New Medications: EU-AIMS [67]; The Adolescent Brain Cognitive Development: ABCD [68]; ENIGMA-3 [26]; UK-Biobank release [69,70].

Red: Selected population (disease-first or genetic-first cohort), Blue: unselected population; "*" Longitudinal study.

**Figure 2.**

Cortical thickness (A-B) and Surface area (C-D): Effect sizes are shown for Schizophrenia: n=4,474 patients with schizophrenia vs. 5,098 HC [32]; ASD: n=1,571 patients with ASD vs. 1,651 HC [31]; Major Depressive Disorder (MDD): n=2,148 patients with MDD vs. 7,957 HC [71]; Obsessive Compulsive Disorder (OCD): n=1,905 patients with OCD vs. 1,760 HC [72]; Bipolar Disorder: n=6,503 patients with Bipolar Disorder vs. 1,837 HC [73]; ADHD: n=2,246 patients with ADHD vs. 1,934 HC [74].

22q11.2 deletion: n=474 carriers vs. 315 HC [14]; 22q11.2 duplication: n=19 carriers vs. 312 HC; 16p11.2 BP4–5: n=80 deletion carriers, n=69 duplication carriers, and 312 HC; 1q21.1: n=25 deletion carriers, n=16 duplication carriers, and 312 HC [75]; 15q11.2: n=203 deletion carriers, n=306 duplication carriers, and 45247 HC [12]

Subcortical volume (E-F): ADHD: n=1,713 patients with ADHD, and 1,529 HC [76]; Bipolar Disorder: n=1,710 patients with BIP, and 2594 HC [77]; MDD: n=1,728 patients with MDD, and 7,199 HC [78]; OCD: n=1,830 patients with OCD, and 1,759 HC [79]; Schizophrenia: n=2,028 patients with SZ, and 2,540 HC [33]. 22q11.2 deletion: n=533 subjects with 22q11DS, and 330 HC [15].

Functional MRI (G-H): Schizophrenia: n=241 patients with SZ, and 242 HC; ASD: n=225 patients with ASD, and 234 HC; ADHD: n=289 patients with ADHD, and 474 HC; 16p11.2 proximal (BP4–5) locus: n=20 subjects with 16p11.2 deletion, n=23 subjects with 16p11.2

duplications and 79 HC; 22q11.2: n=46 subjects with 22q11.2 deletion, n=12 subjects with 22q11.2 duplication and 43 HC [38].

Author Manuscript

Author Manuscript

Author Manuscript

Author Manuscript