

UC Riverside

UC Riverside Previously Published Works

Title

Protein-Level Interactions as Mediators of Sexual Conflict in Ants*

Permalink

<https://escholarship.org/uc/item/9sz4f6c5>

Journal

Molecular & Cellular Proteomics, 18(Suppl 1)

ISSN

1535-9476

Authors

Dosselli, Ryan
Grassl, Julia
den Boer, Susanne PA
et al.

Publication Date

2019-03-01

DOI

10.1074/mcp.ra118.000941

Peer reviewed

Protein-Level Interactions as Mediators of Sexual Conflict in Ants

Authors

Ryan Dosselli, Julia Grassl, Susanne P.A. den Boer, Madlen Kratz, Jessica M. Moran, Jacobus J. Boomsma, and Boris Baer

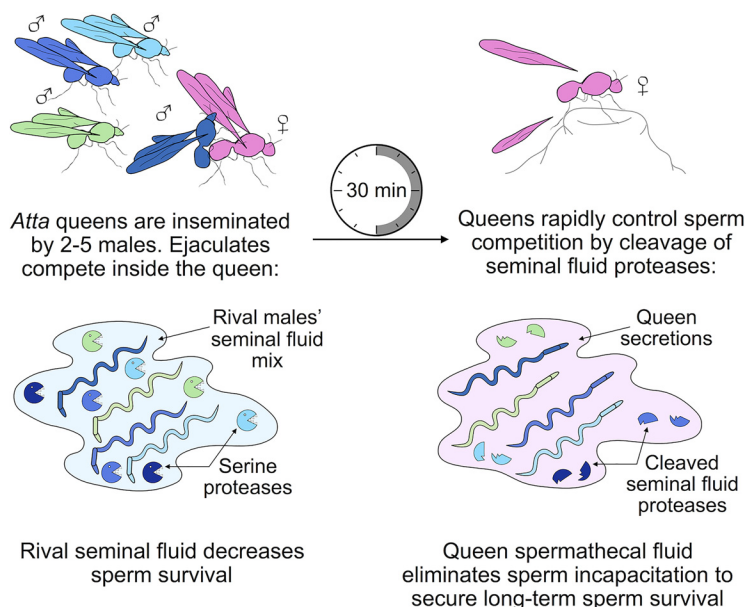
Correspondence

boris.bar@ucr.edu;
JJBoomsma@bio.ku.dk

In Brief

Sexual conflicts continue after insemination because reproductive interests of the sexes differ when females mate with multiple males. In the ant *Atta colombica*, exposure to male seminal fluid proteins harms rival sperm, but queens are expected to neutralize this damage because they cannot re-mate later in life. We found that queen sperm storage organ fluid targets a distinct subset of male seminal fluid proteases and we show experimentally that inhibition of these proteases increases sperm survival when ejaculates are mixed.

Graphical Abstract



Highlights

- Proteins in reproductive fluids are key mediators of sexual conflict in ants.
- Proteomes of seminal and spermathecal fluids show evidence of role specialization.
- Spermathecal fluid targets a distinct subset of seminal fluid proteases for fragmentation.
- Inhibition of serine proteases prevents sperm mortality induced by rival seminal fluid.



Protein-Level Interactions as Mediators of Sexual Conflict in Ants*[§]

✉ Ryan Dosselli^{‡§§}, ✉ Julia Grassl^{‡§§}, ✉ Susanne P.A. den Boer^{‡¶}, Madlen Kratz^{‡||},
✉ Jessica M. Moran^{‡§||}, ✉ Jacobus J. Boomsma^{¶‡‡}, and ✉ Boris Baer^{**¶¶}

All social insects with obligate reproductive division of labor evolved from strictly monogamous ancestors, but multiple queen-mating (polyandry) arose *de novo* in several evolutionarily derived lineages. Polyandrous ant queens are inseminated soon after hatching and store sperm mixtures for a potential reproductive life of decades. However, they cannot re-mate later in life and are thus expected to control the loss of viable sperm because their lifetime reproductive success is ultimately sperm limited. In the leaf-cutting ant *Atta colombica*, the survival of newly inseminated sperm is known to be compromised by seminal fluid of rival males and to be protected by secretions of the queen sperm storage organ (spermatheca). Here we investigate the main protein-level interactions that appear to mediate sperm competition dynamics and sperm preservation. We conducted an artificial insemination experiment and DIGE-based proteomics to identify proteomic changes when seminal fluid is exposed to spermathecal fluid followed by a mass spectrometry analysis of both secretions that allowed us to identify the sex-specific origins of the proteins that had changed in abundance. We found that spermathecal fluid targets only seven (2%) of the identified seminal fluid proteins for degradation, including two proteolytic serine proteases, a SERPIN inhibitor, and a semen-liquefying acid phosphatase. *In vitro* and *in vivo* experiments provided further confirmation that these proteins are key molecules mediating sexual conflict over sperm competition and viability preservation during sperm storage. *In vitro* exposure to spermathecal fluid reduced the capacity of seminal fluid to compromise survival of rival sperm in a matter of hours and biochemical inhibition of these seminal fluid proteins largely eliminated that adverse effect. Our findings indicate that *A. colombica* queens are in control of sperm competition and sperm storage, a capacity that has not been documented in other animals but is predicted to have independently evolved in other polyandrous social insects. *Molecular & Cellular Proteomics* 18: S34–S45, 2019. DOI: 10.1074/mcp.RA118.000941.

When females mate with multiple males, *i.e.* are polyandrous, conflicts over paternity continue after mating if sperm from different males compete for storage and egg fertilization, a process referred to as sperm competition. Due to conflicting reproductive interests between the sexes, female reproductive tracts have evolved discrimination mechanisms to secure appropriate mate choice and reproductive success despite sperm competition constraints (1, 2). The phenotypic manifestations of these sexual conflicts have been well studied (2–4), but the underlying molecular processes mediating them remain largely unknown. Resolving these mechanisms is becoming increasingly feasible (5, 6) and has the potential to provide key insights into the homology and possible convergence of genes and proteins mediating sexual conflict (7–9).

Seminal fluid (SF) is a glandular secretion that males provide to sperm. It contains proteins that are important determinants of male reproductive success (10), as is particularly well documented in *Drosophila* where the sex peptide has a range of effects on female reproductive physiology and behavior (11). These interactions may serve joint reproductive interests, but they tend to primarily favor male interests while reducing future reproductive success of females (12). Such sexual conflicts are often influenced by dynamic coevolutionary arms races, where molecular mechanisms are difficult to disentangle particularly when rates of re-mating are unpredictable. Females affect the outcome of sexual conflicts via defensive sexual strategies, but they are unlikely to gain ultimate control when re-mating continues to expose them to new male ejaculates (12, 13).

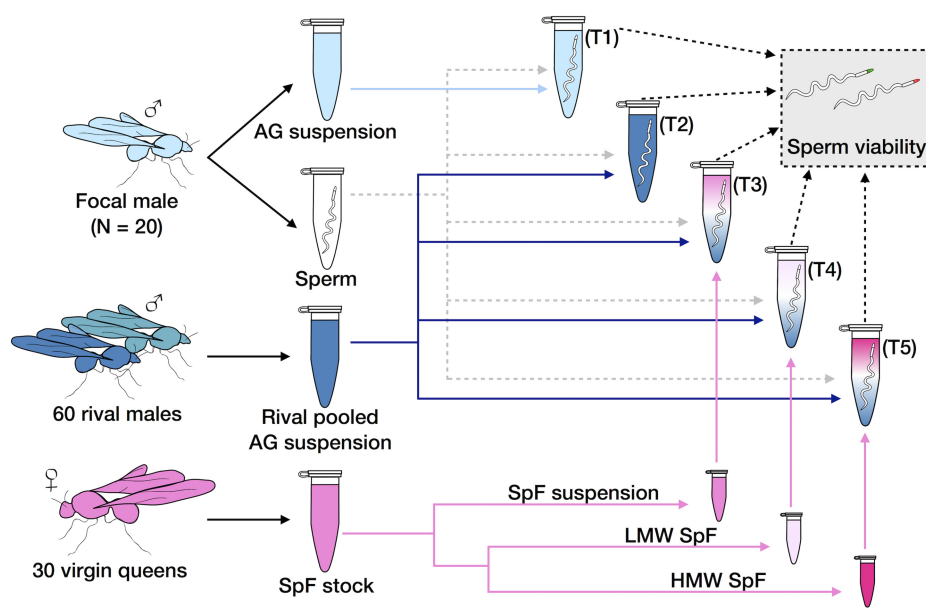
The mating systems of *Atta* leaf-cutting ants offer unique opportunities to study male-female protein interactions during insemination and sperm storage. Queens and males have large body sizes and ejaculates are transferred directly to the spermatheca, the queen's sperm storage organ, where they encounter both rival ejaculates and queen-derived secretions (14). These characteristics imply that artificial insemination is

From the ‡ARC Centre of Excellence in Plant Energy Biology, School of Molecular Sciences, Bayliss Building (M316), §Centre for Evolutionary Biology, School of Biological Sciences (M092), ||Honey Bee Health Research Group, School of Molecular Sciences (M316), The University of Western Australia, Crawley WA 6009, Australia; ¶Centre for Social Evolution, Department of Biology, University of Copenhagen, Universitetsparken 15, 2100 Copenhagen, Denmark; **Center for Integrative Bee Research (CIBER), Department of Entomology, The University of California, Riverside CA 92506

Received July 11, 2018, and in revised form, December 6, 2018

Published, MCP Papers in Press, December 31, 2018, DOI 10.1074/mcp.RA118.000941

FIG. 1. Experimental procedure for quantifying the effect of SF proteins on mutual sperm incapacitation and the termination of sperm competition by female SpF, using unrelated field-collected virgin queens and males of *A. colombica*. Sperm from a single focal male ($n = 20$) was exposed to a sample of: (T1) the male's own diluted AG secretion; (T2) a similar suspension mixture of rival male AG secretion from 60 unrelated males obtained from two other colonies, emulating that queens mate with 2–3 males on average under natural conditions; (T3) the mixture of rival male AG secretion plus queen SpF; (T4) the mixture of rival AG secretion plus the low molecular weight (LMW) fraction of the SpF; and (T5) the mixture of rival AG secretion plus the high molecular weight (HMW) fraction of the SpF. After 30 min, sperm survival was scored under a microscope using live/dead staining.



a feasible experimental approach for emulating natural insemination (15). Because queens never re-mate later in life (16), selection can produce both female enhancement mechanisms of sperm preservation after insemination (14) and mechanisms to terminate sperm competition if it compromises future female reproductive success (17). Directly after mating, *Atta* queens must individually dig a burrow to establish a new colony. Thus, *Atta* queens face a series of trade-offs when allocating metabolic resources to control sexual conflict and maximize survival during solitary colony-founding under significant constraints of resource availability and disease pressure (17, 18).

We previously found that SF of *A. colombica* males reduces survival of rival sperm *in vitro*, a process known as sperm incapacitation, and that the queen's spermathecal secretions terminate this process of competitive elimination (19). Here we conducted a series of experiments to unravel the molecular basis of these male-male and male-female interactions. We first show that the *in vitro* incapacitation effects of SF on sperm of other males are due to proteins (20) and that the interactions between SF and spermathecal fluid (SpF) are also protein based. This implies that proteins play crucial roles in the phenotypic expression of sperm competition and its termination. In a second step, we used a quantitative proteomics approach by mixing SF with SpF to identify the proteins that are targeted for degradation using differential in gel electrophoresis (DIGE). In a third step, to assess whether focal proteins originated from male or female secretions, we con-

ducted a full proteome analyses of both SF and SpF, which allowed us to identify the SF proteins that are degraded by SpF. Finally, we performed an *in vivo* artificial insemination experiment and *in vitro* follow-up trials with general and specific protease inhibitors to obtain phenotypic confirmation for these SF proteins being molecular agents and counteragents of sperm competition. The experimental procedures and results are presented in this order in the sections below.

EXPERIMENTAL PROCEDURES

Collection of Virgin Queens and Males—All ant sampling and fieldwork was done in May (2008–2016) at the Smithsonian Tropical Research Institute in Gamboa, Republic of Panama. Male and virgin queens of *A. colombica* were dug out of specific colonies around Gamboa. Male sexual maturity was confirmed by dissecting subsamples of individuals to verify that testes had degenerated and all sperm had been transferred to the accessory testes (ATs), which are enlarged sections of the vas deferens used for the storage of mature sperm prior to ejaculation (21). Virgin queens were assumed to be sexually mature when found in fungus-garden chambers close to the surface and when their cuticles had become dark brown. All dissections were conducted using Inox 5 watchmaker forceps in Hayes saline solution (9 g NaCl, 0.2 g CaCl₂, 0.2 g KCl, and 0.1 g NaHCO₃ in 1,000 ml H₂O) as used for our previous studies (22).

The Effects of SpF on Sperm Incapacitation Activity of SF—An overview of the experimental procedures of this section is given in Fig. 1. To obtain SF, the accessory glands (AGs) of 60 males originating from two different *A. colombica* colonies were dissected in 200 μ l Hayes, ruptured with forceps, and vortexed for 3 min before centrifugation for 3 min at 13,500 g. The supernatant of all AGs was pooled, and 48 ml of Hayes was added to create a 60 ml stock solution and stored at -20°C . This solution represented the contents of ~ 2 AGs/ml, which seemed a reasonable approximation because: 1) Protein concentrations in natural ejaculates are unknown, and 2) males can inseminate multiple queens and allocate some unknown fraction of their total complement of SF to each ejaculate. The concentrations that we used are therefore most likely to be lower than in natural ejaculates, so the effects we quantified can be regarded as conserv-

¹ The abbreviations used are: AEBSF, 4-(2-aminoethyl)benzenesulfonyl fluoride hydrochloride, serine protease specific inhibitor; AT, accessory testes; AGs, accessory glands; DIGE, differential in-gel electrophoresis; emPAI, Exponentially Modified Protein Abundance Index; HMW, high molecular weight; MOWSE, MOlecular Weight Search; SF, seminal fluid; SpF, spermathecal fluid.

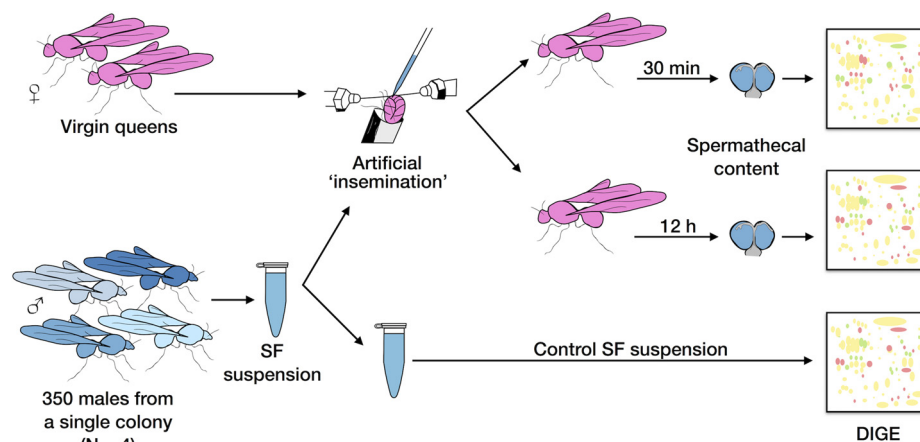


FIG. 2. Experimental procedure using artificial “insemination” (in quotes because no sperm was involved) and DIGE to identify changes in abundance of SF proteins after exposure to SpF *in vivo*. Virgin queens were artificially inseminated with a mixture of SF from 350 brother males, which corresponds to the genetic diversity of two unrelated haploid males; after 30 min (10 queens) or 12 h (10 queens), the spermathecal contents were retrieved by dissection, pooled per treatment, and analyzed using DIGE along with a similar sample of SF suspension that had not been used for artificial insemination. DIGE included four biological replicates (*i.e.* SF from four sets of 350 brother males), each consisting of a noninseminated SF control suspension and the two SF insemination suspensions retrieved after 30 min and 12 h.

ative estimates of the protein-level interactions as they occur in nature.

To obtain SpF, we collected 30 virgin queens from four different colonies and artificially inseminated (*i.e.* transferred using an artificial insemination technique) 20 μ l of Hayes saline into the spermatheca of each queen as described previously (15). The queens were sacrificed after 60 min, dissected, and their spermathecae ruptured in Hayes saline. The samples were then vortexed for 3 min, followed by centrifugation for 3 min at 13,500 *g* to separate SpF from tissue residues. The supernatant from all 30 queens was pooled, after which half of this SpF stock solution was transferred to a new Eppendorf tube and suspended in Hayes resulting in a final concentration of ca. 1 spermatheca fluid complement per milliliter, *i.e.* a comparable protein concentration as in the AG samples. The second half of the SpF stock solution was separated into a high molecular weight (HMW) fraction, mainly containing protein molecules >3 kDa, and a low molecular weight (LMW) fraction, most likely containing peptide and metabolite molecules <3 kDa, using a centrifugal filter device (AMICON Ultrafree Centrifugal Filters 3 kDa, Millipore, Bayswater, VIC, Australia) for 30 min at 13,500 *g*. Both fractions were resuspended in Hayes saline to reach the original volume of 15 ml (Fig. 1).

An additional 20 males were collected from a single *A. colombica* colony that was not used previously for any of the reproductive fluid collections described above (Fig. 1). This new colony allowed us to obtain five 1 μ l samples of sperm dissected from the ATs of each of these males, which were diluted in: (T1) 1 ml of AG suspension of the same male collected as described above, (T2) a 1 ml aliquot of the AG stock suspension (from 60 rival males from one of the previous colonies), (T3) a 0.5 ml aliquot of the AG stock suspension and 0.5 ml of the SpF stock solution (collected from 30 queens), (T4) 0.5 ml AG stock suspension and 0.5 ml of the LMW fraction of the SpF stock solution, and (T5) 0.5 ml AG stock suspension and 0.5 ml of the HMW fraction of the SpF stock solution.

A 5- μ l aliquot of each of the treatment samples was used to estimate sperm survival with a Live/Dead sperm viability kit (Molecular Probes, Mulgrave, VIC, Australia) and using an earlier developed protocol (22). A minimum of 300 sperm cells per treatment were scored as live or dead using a fluorescence microscope (Olympus CX41, EXFO X-Cite 120, filter cube CX-DMB-2 and 800x magnification). Counting was performed blindly in relation to treatment and data

analysis was performed in JMP, version 11.0.0 (SAS Institute, Cary, NC), for Windows using generalized linear models with a binomial error structure and logit link function. Sperm origin (male identity) was included as a random factor, number of live sperm as dependent variable, and the total number of sperm counted per replicate as binomial denominator.

Changes in Abundance of SF Proteins After Exposure to SpF Using DIGE—To identify the proteins involved in sexual conflict, we used DIGE to detect protein abundance changes when SF encounters SpF in the experimental design summarized in Fig. 2. DIGE compares protein abundances between multiple proteomes of interest while maintaining their key properties such as isoelectric point and molecular weight (MW). In order to minimize experimental variation, samples are labeled with different fluorescent dyes before being separated by 2D-PAGE. An internal standard, labeled with a separate fluorescent dye, allows comparison between samples run on different gels. Although DIGE has limited detection efficiency for proteins with extreme isoelectric points, unusual MWs, posttranslational modifications, and nonstandard amino acid sequences (23), it is a well-established method for obtaining quantitative data on changes in abundance of intact and fragmented proteins, which was the main objective of our study.

Sample Collection and Preparation—Four biological replicates of SF were collected from four colonies by squeezing a male’s abdomen between two fingers to induce ejaculation and collecting 2–4 μ l of outflowing semen per male (15, 20). Each biological replicate originated from a separate colony and the SF was collected from ~350 males per colony. Each replicate was divided into 100 μ l aliquots, and assigned to one of the following treatments: (1) untreated SF controls, (2) SF transferred to the spermatheca using artificial insemination and retrieved after 30 min, and (3) SF transferred to the spermatheca in the same way and retrieved after 12 h (Fig. 2). Because leaf-cutting ant queens never re-mate later in life to replenish stored sperm (20), we hypothesized that queens should have been under strong selection to quickly intervene in male-driven sperm incapacitation. The 30-min time point is a reasonable estimate for the duration of naturally occurring mating flights of *Atta* queens when they are inseminated by 2–5 males with a median of 2–3 (18). Our selection of 12 h as second time point was also purposefully considered because by that time

queens will have terminated all mating activities and finalized digging a nest burrow to initiate a new colony.

In each of the two different treatments, we transferred 10 μl of SF to the spermathecae of 10 queens and allowed them to recover for 30 min or 12 h before dissecting them to obtain the spermathecal content as described above. Recovered spermathecal contents (transferred SF plus SpF) were then pooled per treatment and replicate, resulting in a total of 12 samples (three treatments with four biological replicates, see Fig. 2). Proteins were precipitated by adding 4x volumes of ice-cold acetone to each sample for 4 h at -20°C and centrifuging at 14,000 g for 10 min, after which supernatants were discarded and the protein pellets were stored at -80°C until further use.

Differential In-gel Electrophoresis (DIGE) Experiment—For DIGE, we prepared all 12 samples as described in Bogaerts *et al.* (24) and performed minimal labeling as described in Grassl *et al.* (25). Each sample, containing 150 μg of protein, was resuspended in 100 μl of DIGE buffer (7 M urea, 2 M thiourea, 4% CHAPS, 20 mM Tris, 1% DTT) and cOmplete Protease Inhibitor Mixture (Roche Diagnostic, Basel, Switzerland), sonicated four times for 30 s, and placed on ice for 1 min, followed by centrifugation at 14,000 g for 10 min at 4°C . Samples were desalted using the PlusOne Mini Dialysis Kit (GE Healthcare, Parramatta, NSW, Australia) according to the manufacturer's protocol, and dialyzed against DIGE buffer. IPG strips (24 cm Immobiline Drystrips pH 3–10 NL; GE Healthcare) were rehydrated overnight with DIGE buffer (DTT replaced by 1.2% DeStreak Reagent and 0.5% IPG buffer pH 3–10, both GE Healthcare). Each protein sample was minimally labeled with DIGE Cy3 fluorescent dye, and an internal standard containing equal amounts of each sample was labeled with Cy5 dye (GE Healthcare) according to manufacturer's instructions. Using cup loading, we loaded 100 μg proteins (50 μg per sample plus 50 μg of internal standard) in 150 μl of DIGE buffer using isoelectric focusing.

Isoelectric focusing was performed with an IPGphor Manifold (GE Healthcare) at 20°C allowing a maximum of 50 μA per strip using the following setup: 4 h at 300V, 3-h gradient to 600 V, 2-h gradient to 1,000 V, 2-h gradient to 3,500 V, 3-h gradient to 8,000 V, 5 h at 8,000 V (total 60,000 Vh). Strips were stored at -80°C and thawed at room temperature prior to SDS-PAGE separation. Each strip was equilibrated twice at room temperature by incubation for 15 min in equilibration buffer (6 M urea, 50 mM Tris-HCl (pH 8.8), 30% glycerol, 2% SDS) containing either 1% w/v DTT (reduction step) or 4% w/v iodoacetamide (alkylation step, in the dark). The second dimension was separated by polyacrylamide gel electrophoresis (1 mm thick, 12%T, 2.6%C) and using a Hoefer SE90010NA at 10°C for 1 h at 7 mA per gel overnight at 50 mA per gel. All gels were scanned using a Typhoon fluorescence scanner (GE Healthcare), and the resulting images were imported into Delta2D software (v 4.34, Decodon GmbH, Greifswald, Germany) for spot analyses.

Experimental Design and Statistical Rationale—Each spot on the DIGE gels was inspected manually, and only spots present on at least three of the four gels per treatment were kept for further analyses. Principal component analysis was used to exclude one outlier gel belonging to the 30 min treatment and analyses of variance were used to test for significant differences in spot intensity between treatments, based on log-transformed ratios. Finally, we applied Student's *t*-tests for pairwise *post hoc* comparisons among treatments using the “*p* values based on permutations” - all permutations and the “false discovery rate (FDR) - number of false positive spots should not be exceeded” corrections available in the Delta2D software. Protein spots with significant abundance differences ($p < 0.05$) between treatments and fold-change differences larger than 2 were selected for protein identification. To do this, we silver-stained one gel per treatment group using a mass spectrometry (MS)-compatible proto-

col (26), then destained spots by incubating them in 15 mM $\text{K}_3[\text{Fe}(\text{CN})_6]$ and 50 mM $\text{Na}_2\text{S}_2\text{O}_3$, and rinsed them in water until fully destained. Spots were then dehydrated in 100% ACN, followed by drying in a speed-vac and in-gel protein digestion with trypsin (Promega, Alexandria, VIC, Australia 20 ng/ μl in NH_4HCO_3 , pH 8.4) overnight at 37°C . Tryptic peptide extraction was done in 70% ACN, 5% formic acid in 10 mM NH_4HCO_3 (pH 8.4) with sonication repeated three times. All supernatant extracts were dried in a vacuum centrifuge and stored at -20°C .

In order to identify the spots selected for MS, each tryptic digest was resuspended in 5% ACN, 0.1% formic acid, and filtered with Ultrafree Centrifugal Filters (Durapore, PVDF 0.2 μm , Millipore). The individual digests were analyzed with LC-MS/MS using a Q-TOF mass spectrometer (Agilent 6550 with a HPLC-Chip Cube and a large capacity C18 chip), coupled to an Agilent 1200 series HPLC and a 20-min gradient (5–35% ACN, 0.1% formic acid). Peak lists were generated using MassHunter Quantitative Analysis B.07.01. Data files were analyzed using a Mascot server (v. 2.5.1) against the *A. colombica* total proteome (16,519 sequences; 7,007,606 residues, Acol_1.0, downloaded October 2016) (27) using the following settings: MS error tolerance ± 100 ppm, MS/MS error tolerance ± 0.5 Da, trypsin digestion, maximum missed cleavages tolerated as 1, peptide charge as 2+, 3+, and 4+, and the instrument selected electrospray ionization Q-TOF setting allowing for variable modifications: carbamidomethyl (C) and oxidation (M). We accepted protein identifications when at least three different peptides were detected with an overall MOlecular Weight Search (MOWSE) ion score greater than 30. We report all protein matches from each spot with a comparable Exponentially Modified Protein Abundance Index (emPAI) score.

Obtaining SF and SpF Proteomes—To distinguish whether proteins identified in our DIGE analysis were of male or female origin, we obtained proteomes of both SF and SpF, using a pooled SF sample of 25 males from five colonies as described above by squeezing their abdomens to collect 2–4 μl of ejaculate per male (15, 20). The SF supernatant was collected from the pooled ejaculates after two centrifugations for 10 min at 13,500 g to separate sperm from SF, before storing the final supernatant at -80°C . SpF was obtained from four different colonies by collecting 10 virgin queens per colony and transferring 10 μl Hayes into their spermathecae using the same methodology as for artificial insemination. All 40 queens were allowed to recover for 12 h before retrieving the content of their spermathecae as described above.

The SF and SpF samples went through reduction/alkylation as described above before trypsin digestion (1:20 enzyme: protein ratio, Promega) at 37°C overnight. Samples were acidified to pH 3 with formic acid and separated by high pH C18-RP fractionation (28). We performed a concatenated, high pH reversed-phase fractionation off line using an Agilent 1200 series HPLC configured with two J4SDS-2 guard columns (PolyLC, Columbia, MD) and a Xbridge™ C18 column (particle size 3.5 μm , inner diameter 4.6 \times 250 mm (Waters, Milford, MA)). Peptides were fractionated using a gradient of 5–60% ACN (v/v) at a flowrate of 1 ml/min in 10 mM ammonium formate, pH 10/ NH_4OH . Fractions were collected in 1-min windows over 96 min in a 96 deep-well plate. The first and last 12 fractions were discarded, and the remaining fractions were pooled for each plate column, resulting in 12 fractions. These were dried in a vacuum centrifuge and processed as described above before MS analysis, also conducted as described above except that the peptides were separated across a longer gradient of 60 min (5–35% ACN, 0.1% formic acid). Data files of the 12 fractions were combined in Mascot Daemon (Matrix Science) and searched as described above. We accepted proteins with at least two peptide identifications and with a protein MOWSE ion score greater than 30. For all proteins identified by a single peptide, we reviewed the MS/MS spectra and removed 106 proteins from the

SF list and 74 proteins from the SpF list that had low peptide ion scores and poor b-ion/y-ion series. For all other single-peptide identifications that were retained, the fully annotated MS/MS spectrum is provided as supplemental files S1 and S2. We compared the obtained SF proteome of *A. colombica* with published SF proteomes of honeybees (29) and fruit flies (30), looking for homologous amino acid sequences using Basic Local Alignment Search Tool (Blastp) protein at National Centre for Biotechnology Information (NCBI).

Effects of Exposure Time of SF to SpF on Sperm Incapacitation—To test whether the exposure of SF to SpF impacts the ability of SF to incapacitate rival sperm, we collected a pooled SF sample from ~200 males from several colonies and our artificial insemination method to transfer 6 μ l of SF to 25 virgin queens collected from different colonies. The spermathecal content of five randomly chosen queens was then recovered through dissection 5 min, 3 h, 6 h, 9 h, or 12 h after the transfer procedure and pooled to produce five treatment samples. We then collected 25 males from four additional colonies to obtain sperm samples from dissected ATs, and incubated these samples in 500 μ l of one of the five spermathecal treatment samples for 60 min before quantifying sperm survival with live-dead fluorescence dyes as described above.

The Effect of Protease Inhibitors on Sperm Incapacitation—To test whether sperm incapacitation can be reduced through biochemical inhibition of the SF proteins targeted by SpF, we exposed sperm from focal individual males to a mixture of SF from rival males either in the presence or absence of different protease inhibitors (see [supplemental Fig. S1](#) for an overview of the experimental design). In an initial experiment, we collected sperm from the AT of one male (22 replicates) and split it into four subsamples (1 μ l of sperm in 200 μ l of Hayes saline each). Two of these sperm subsamples were exposed for 2 h at room temperature to either: 1 μ l rival SF (pooled from 250 males from five colonies) or 1 μ l SF + Roche cOmplete Protease Inhibitor mixture (containing inhibitors for serine proteases, carboxypeptidases and cysteine proteases) at a ratio 1 inhibitor: 2.5 SF sample. The other two subsamples were exposed to relevant controls of Hayes and Hayes + Roche cOmplete Protease Inhibitor mixture. The SF samples were incubated with the protease inhibitor for 4 h before they were combined with the sperm subsamples, and we compared sperm survival using the Live/Dead kit after 2 h ([supplemental Fig. S1](#)).

The results showed a significant effect of the inhibitors to neutralize sperm incapacitation by rival SF. Therefore, in a second experiment we used specific protease inhibitors to explore the identity of the proteases involved in sperm incapacitation ([supplemental Fig. S1](#)). SF was collected from 250 males (50 males each from five colonies). Each SF sample was split into three subsamples of equal volume, treated with (a) a serine protease specific inhibitor—AEBF¹ (100 μ M, Sigma Aldrich, Castle Hill, NSW, Australia) (31), (b) a specific inhibitor of carboxypeptidases—EDTA (10 mM, Sigma Aldrich) (32), and (c) Hayes saline as a control. The treated SF subsamples were then incubated at room temperature for 4 h. We then assessed each treatments' sperm-incapacitation efficiency by splitting a sperm sample from one male into six aliquots of 1 μ l sperm in 200 μ l Hayes and exposing each aliquot to 1 μ l of one of the treated SF subsamples (a-c), plus controls of (d) Hayes only, (e) Hayes containing EDTA, and (f) Hayes containing AEBF. Sperm survival was then assessed after 2 h using the Live/Dead kit.

RESULTS

Our results confirm that the key interaction effects between male SF and queen SpF are driven by the protein containing (HMW) fractions of these secretions (Fig. 3A), and that the proteomic interactions between these secretions are essential

for understanding the molecular mechanisms of sexual conflict in *A. colombica*. This result prompted our comparative DIGE experiment to identify changes in the sex-specific proteomes when SF interacts with SpF. The results of the DIGE experiment then triggered our efforts to obtain the SF and SpF proteomes, so we could determine the sex-specific origin of the proteins with altered abundances after the male and female secretions interact (Fig. 4) and to do validation experiments to show that serine proteases have key roles in the expression and regulation of sexual conflict (Figs. 3B-3D).

The SF and SpF proteomes included 311 and 396 identified proteins, respectively, and showed that less than half of these proteins (135) were shared (Fig. 4, [supplemental Fig. S2](#), [supplemental Table S1](#)). Gene Ontology further showed that a large number of proteins were present either in SF or SpF but not in both secretions. In particular, proteins involved in DNA replication, amino acid biosynthesis/metabolism, ATP-binding, and metal ion binding were identified in greater number in the SpF proteome than in the SF proteome (Fisher's exact probability test, two tailed, $p < 0.05$), whereas proteins involved in glycan processing, signaling, and carbohydrate turnover were identified in greater number in the SF proteome ([supplemental Table S2](#)). These results also showed that the *A. colombica* SF proteome is of comparable size to that of honeybee drones (29) but considerably larger than that of fruit flies (30). The SpF proteome that we obtained extends the resolution depth by an order of magnitude compared with a previous study that identified proteins in the spermatheca of another species of *Atta* leaf-cutting ants (33).

The DIGE experiment (Fig. 2) enabled us to identify a total of 471 protein spots, 418 of which did not show any significant change in abundance. Of the 53 spots that changed in abundance, 39 significantly increased and 14 significantly decreased after SF and SpF interacted. These abundance changes accumulated over time after insemination, with 26 spots having changed in intensity after 30 min and 49 after 12 h. However, only four spots had changed after 30 min and not after 12 h ([supplemental Table S3](#)). Because we found no evidence for any overall changes in protein abundance in 89% (418 out of 471) gel spots, we concluded that no overall degradation of proteins had occurred during the experiment. This inference was reinforced by our finding that the average amount of protein retrieved per inseminated queen did not differ across experimental groups ($32.2 \pm 10.6 \mu$ g in controls, $24.1 \pm 6.0 \mu$ g in the 30-min treatment, and $29.2 \pm 13.4 \mu$ g in the 12-h treatment; analysis of variance, $F = 0.4597$, $df = 2$, $p = 0.645$).

Using MS, we identified 44 protein spots where abundances were significantly changed on the DIGE gel. No significant protein identifications were found in nine spots, but we identified a total of 22 unique proteins in the remaining 35 spots (Table I, [supplemental Table S3](#)). Some of the SF proteins that changed in abundance after contact with SpF were identified in multiple spots across the gels ([supplemental Table S3](#) and

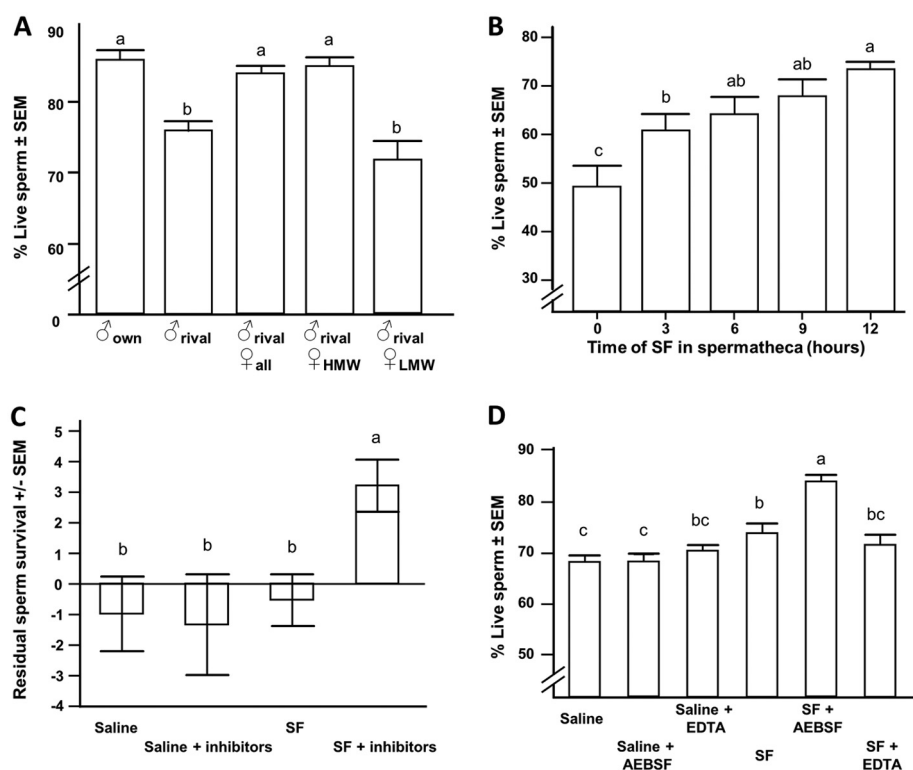


FIG. 3. Changes in sperm survival after experimentally manipulating the sperm-incapacitation efficiency of rival males' SF, by exposure to either SpF or synthetic protease inhibitors. (A) Sperm survival after 30 min exposure to: a male's own SF (δ own; control), rival males' SF (δ rival), rival males' SF mixed with female SpF (δ rival + ♀ all), rival males' SF mixed with the high molecular weight fraction of female SpF (δ rival + ♀ HMW), and rival males' SF with the low molecular weight fraction of SpF (δ rival + ♀ LMW). The first three bars have previously been published by Den Boer *et al.* 2010 (18). (B) Sperm survival after exposure to rival SF (pooled from 350 males), after being artificially inseminated into a queen's spermatheca and recovered at time intervals between 5 min (0 h) and 12 h. (C) Sperm survival after 2-h exposure to Hayes saline, saline with a mixture of synthetic inhibitors of proteases (Saline + inhibitors), rival males' SF, and rival males' SF with synthetic inhibitors of proteases (SF + inhibitors); we used residuals rather than direct measurements to adjust the response variable for unexplained variation in overall sperm viability across two subsequent field seasons (see methods and supplemental Fig. S1 for details). (D) Sperm survival after 2-h exposure to Hayes saline, saline with synthetic inhibitors of serine proteases (Saline + AEBSF), saline with synthetic inhibitors of carboxypeptidases (Saline + EDTA), rival males' SF, rival males' SF with synthetic inhibitors of serine proteases (SF + AEBSF), and rival males' SF with synthetic inhibitors of carboxypeptidases (SF + EDTA). See supplemental Fig. S1 for procedural details. Bars marked with different letters are significantly different at $p < 0.05$ (contrasts test).

supplemental Figs. S3 and S4), suggesting these spots only contained protein fragments, also because MW and isoelectric point were substantially different from the intact protein predictions in Uniprot. Such indications of protein fragmentation were found for a total of 24 spots. Three of these proteins (serine protease inhibitor B10 (SERPIN B10), acid phosphatase, and the uncharacterized protein Acol_04113) showed a decreased abundance in the spots representing the expected molecular size and PI for the intact proteins and increased abundances in spots representing lower MWs consistent with these being fragments (Table I and supplemental Fig. S3). For all spots that were identified as representing multiple proteins, we compared the emPAI scores and report all significant identifications (supplemental Table S3).

We identified 22 unique proteins from the 2D-DIGE gels, of which seven showed a decrease and 15 an increase in abundance (Table I, Fig. 4). Of the seven SF proteins with reduced abundance, four (serine protease: snake, acid phosphatase,

the uncharacterized protein Acol_04113, and hydroxyacid-oxoacid transhydrogenase) were found in the SF proteome only, and three (serine protease: easter, SERPIN B10, and carboxypeptidase B) were present in both the SF and SpF proteomes (Table I, supplemental Tables S1 and S3, and supplemental Figs. S3 and S4).

Of the 15 proteins that increased in abundance after transfer of SF to the spermatheca, seven were found in both proteomes (chitinase-like protein imaginal disk growth factor 4, superoxide dismutase, glutathione S-transferase, phosphatidylethanolamine-binding protein, arginine kinase, actin, and transferrin (Table I)). The remaining eight proteins were identified only in the SpF proteome, including glyceraldehyde-3-phosphate dehydrogenase, beta-glucuronidase, transketolase, catalase, hexamerin, transgelin, peptidyl-prolyl cis-trans isomerase, and nucleoside diphosphate kinase (Table I). Because no intact proteins that were exclusively found in the SF increased in abundance after contact with SpF, we inferred

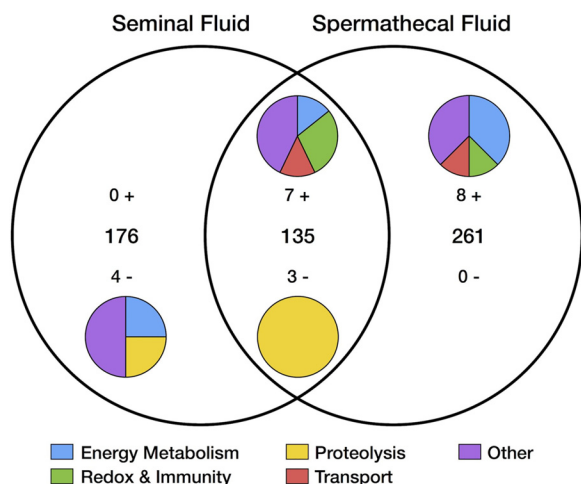


FIG. 4. Comparison of the SF and SpF proteomes of *A. colombica*. The Venn diagram shows the total number of proteins identified from male SF and queen SpF and the number of proteins identified in both proteomes using shotgun proteomics (large font). The pie charts represent functional classes of proteins quantified in the DIGE experiment, showing the class fractions (colors) and numbers of proteins (small font) that increased (+) or decreased (–) in abundance after exposure to SpF (see supplemental Table S2).

that all observed increases in abundances were the result of proteins that were introduced by the SpF (Table I).

SF proteins that decreased in abundance after contact with SpF predominantly belonged to the proteolysis functional category (serine proteases: easter and snake, SERPIN B10, and carboxypeptidase B). It is noteworthy that three of the proteins that changed in abundance after contact with SpF showed a decreased abundance in spots with a MW of the intact protein, while some smaller fragments increased in abundance (SERPIN B10, acid phosphatase, and the uncharacterized protein Acol_04113). This suggests that the intact protein was fragmented, consistent with these proteins being specific targets of SpF proteins directly after insemination (Table I).

Most of the proteins that increased in abundance are involved in energy metabolism (glyceraldehyde-3-phosphate dehydrogenase, beta-glucuronidase, transketolase, and arginine kinase) and oxidative stress responses, including redox and immunity (catalase, superoxide dismutase, and glutathione S-transferase) (Table I, Fig. 4; see supplemental Table S3 for further details on all proteins). Of the eight SpF-specific proteins that we did not identify in the SF, five appeared only on the gels where SF was exposed to SpF for 30 min and 12 h. The remaining three SpF-specific proteins plus all seven proteins shared between SF and SpF were all found in higher abundances after the SF was exposed to SpF (Table I), suggesting that increased abundances of SF proteins resulted from the mixing with SpF proteins.

As already mentioned, the seven SF proteins that decreased in abundance after exposure to SpF (Table I) included two serine proteases (easter and snake), SERPIN B10, and a

carboxypeptidase B. Snake appeared to be SF-specific, whereas easter and SERPIN B10 were found in both SpF and SF. Carboxypeptidases have a rather broad array of biological functions (32), but SERPINs can target serine proteases involved in sperm-egg recognition (see Discussion). We detected a total of five different SERPIN proteins in the SpF proteome, three of which were also present in the SF proteome. Our results thus provide several lines of evidence that serine proteases and SERPINs are targeted by SpF to terminate mutual sperm incapacitation in *A. colombica*. We also detected a fragment of SERPIN B10 in SF after *in vivo* exposure to SpF (Table I and supplemental Fig. S3). Interestingly, although we identified a total of three different SERPINs in the SF proteome, only SERPIN B10 was found to be targeted by SpF for degradation, suggesting that SpF targets individual proteins with high specificity.

Of the remaining three SF-specific proteins that were reduced in abundance, uncharacterized protein Acol_04113 was degraded into at least three fragments that all increased in abundance after male and female secretions came into contact (Table I, supplemental Fig. S3), consistent with this protein also being targeted for destruction by SpF. A similar fragmentation effect could be observed for acid phosphatase (supplemental Fig. S3) where we detected one fragment spot that increased 21-fold after 12 h of SpF exposure. Acid phosphatase has fertility-reducing effects (see Discussion for further details). The final SF-specific protein identified as being targeted by SpF was hydroxyacid-oxoacid transhydrogenase, an enzyme that catalyzes oxidation-reduction reactions (Table I). We did not detect any fragments for this protein, but the intact protein decreased in abundance after exposure to SpF (supplemental Fig. S3).

Five of the 15 proteins that increased in abundance (chitinase-like protein imaginal disk growth factor 4, catalase, phosphatidylethanolamine-binding protein, glutathione S-transferase, and transferrin) were identified as fragments, but it was not possible to ascertain whether fragmentation occurred before or after SF was put in contact with SpF (Table I and supplemental Fig. S3). Imaginal disk growth factor 4 appeared to be already split into several fragments in the male body because it was identified in six spots of the pure SF (369, 371, 380, 386, 397, and 511; Table I, supplemental Fig. S3), but two new degradation products (spots 374 and 517) appeared when exposed to SpF, suggesting some further fragmentation had occurred.

Exposure of SF to SpF Reduces Rival Sperm Incapacitation Quickly—To confirm the efficiency of SpF in eliminating sperm incapacitation over time, we replicated the experiment of Fig. 1 and transferred pooled SF mixtures from six unrelated rival males to the spermathecae of virgin queens, which we then recovered by dissection after time intervals between 5 min and 12 h. These recovered SF samples were then exposed to newly collected sperm of a different male, which showed that sperm survival was higher when the SF had been exposed to

TABLE I

Proteins identified in DIGE spots with significant abundance changes after exposure of seminal fluid to spermathecal fluid

Columns provide protein names, biological functions, presence in male SF and female SpF, spot number on DIGE gels, expected vs observed molecular weight and abundance changes after exposure to SpF. Protein abbreviations: HOT, hydroxyacid-oxoacid transhydrogenase; GAPDH, glyceraldehyde-3-phosphate dehydrogenase; SOD, superoxide dismutase; GST, glutathione S-transferase; PEBP, phosphatidylethanolamine-binding protein, PpiC-type - peptidyl-prolyl cis-trans isomerase; NDP, nucleoside diphosphate kinase. See [supplemental Tables S1 and S3](#) for details.

Protein	Function	SF	SpF	Number	Size	Change
Serine protease Easter (Acol_08100)	Proteolysis	Yes	Yes	365	Fragment	Decreased
				368	Fragment	Decreased
				432	Fragment	Decreased
				436	Fragment	Decreased
Serine protease Snake (Acol_02829)	Proteolysis	Yes	No	421	Intact	Decreased
				436	Intact	Decreased
Serpin B10 (Acol_08024)	Serine protease inhibitor	Yes	Yes	257	Intact	Decreased
				267	Intact	Decreased
				388	Intact	Decreased
				389	Intact	Decreased
				399	Intact	Decreased
Carboxypeptidase B (Acol_07302)	Metallo-carboxypeptase	Yes	Yes	262	Intact	Decreased
				257	Intact	Decreased
Acid phosphatase (Acol_04502)	Dephosphorylation	Yes	No	267	Intact	Decreased
				395	Fragment	Increased
				265	Intact	Decreased
HOT (Acol_07180 HOT)	Energy metabolism	Yes	No	3245	Intact	Decreased
				87	Intact	Decreased
Uncharacterized protein Acol_04113	Unknown	Yes	Yes	192	Fragment	Increased
				198	Fragment	Increased
				551	Fragment	Increased
				374	Fragment	Increased
Chitinase-like protein Idgf4 (Acol_07567)	Morphogenesis	Yes	Yes	386	Fragment	Increased
				369	Fragment	Increased
				371	Fragment	Increased
				380	Fragment	Increased
				397	Fragment	Increased
				511	Fragment	Increased
				517	Fragment	Increased
GAPDH (Acol_07180 GapDH)	Glycolysis	No	Yes	329	Intact	Increased
				346	Intact	Increased
Beta-glucuronidase (Acol_05025)	Carbohydrates metabolism	No	Yes	156	Intact	Increased
				154	Intact	Increased
Transketolase (Acol_07599)	Pentose phosphate shunt	No	Yes	213	Intact	Increased
				210	Fragment	Increased
				213	Fragment	Increased
Catalase (Acol_06379)	Response to oxidative stress	No	No	216	Fragment	Increased
				519	Intact	Increased
				464	Fragment	Increased
SOD [Cu-Zn] (Acol_09923)	Response to oxidative stress	Yes	Yes	114	Intact	Increased
GST (Acol_15065)	Response to oxidative stress	Yes	Yes	120	Intact	Increased
				2031	Intact	Increased
Hexamerin (Acol_04072)	Oxygen transport	No	Yes	464	Fragment	Increased
				467	Fragment	Increased
PEBP (Acol_01467)	Lipid binding	Yes	Yes	531	Intact	Increased
				552	Intact	Increased
Transgelin (Acol_06601)	Actin binding	No	Yes	562	Intact	Increased
PpiC-type (Acol_08173)	Protein folding	No	No	562	Intact	Increased
NDP (Acol_07573)	GTP/UTP biosynthesis	No	Yes	320	Intact	Increased
Arginine kinase (Acol_12832)	Phosphorylation	Yes	Yes	198	Intact	Increased
Transferrin (Acol_11379)	Metal ion binding	No	Yes	551	Fragment	Increased
				213	Fragment	Increased
Actin (Acol_04097)	Cytoskeleton	Yes	Yes	213	Intact	Increased

SpF for longer periods of time ($\chi^2 = 25.308$, $df = 4$, $p < 0.001$) (Fig. 3B).

Protease Inhibitors Confirm the Identity of Antagonistic Proteins in SF—We finally tested whether SF proteases are indeed the prime agents of sperm incapacitation by incubating SF mixtures of competing males with or without adding three commercially available cocktails of protease inhibitors. We found that sperm survival increased significantly when general protease inhibitors were present ($\chi^2 = 10.419$, $df = 3$, $p = 0.015$, Fig. 3C). We subsequently tested protease inhibitors that are more specifically effective against the two main categories of proteases, carboxypeptidases, and serine proteases, as identified in the DIGE experiment. This confirmed that only the serine protease inhibitor AEBSF reduced the incapacitation ability of SF toward rival sperm ($\chi^2 = 62.271$, $df = 5$, $p < 0.001$, Fig. 3D). These combined results provide further support that spermathecal secretions have a general and indiscriminate preservation function for the viability of newly stored sperm mixtures (see (19) for phenotypic evidence) by neutralizing those SF proteases that mediate sperm incapacitation between ejaculates.

DISCUSSION

Sexual conflicts are known to continue after insemination when the reproductive interests of females and males are not fully aligned, which is essentially always the case when females mate with multiple males. In the leaf-cutting ant *A. colombica* male SF proteins incapacitate rival sperm within a brief time window, and queens are known to neutralize hostility among competing ejaculates upon storing sperm, an adaptation that seems logical because they cannot re-mate later in life (17, 19). We here combined proteomic methods with the experimental approaches that are typically used in evolutionary and behavioral ecology to obtain first insights in the expression and regulation of sexual conflicts in social insects. The SF and SpF proteomes that we obtained are of sufficient size and depth to make meaningful comparisons and we are confident that they enabled us to identify potential proteins of interest that are essential for the expression of sexual conflict in leaf-cutting ants.

We found that proteins secreted by the sperm storage organ, the spermatheca, target a very small subset of male SF proteases and we show that their degradation or biochemical inhibition increases the survival of sperm that would otherwise have died due to exposure to SF of other males. Our results are also consistent with many components of SF having an overall positive effect on sperm survival, similar to what we have reported previously in both ants and bees (17, 19), and that this support is independent of whether SF originates from the same or a different male (19). This is why sperm survival is typically higher in SF from rival males compared with Hayes saline. Phenotypic studies of differential sperm survival in scenarios of sperm competition therefore always require both own-SF and Hayes saline controls.

Our study shows, to our knowledge for the first time, that it is the proteins in the SpF that neutralize the antagonistic effects of rival SF on sperm survival. Our finding that SpF contains a larger number of proteins involved in oxidation-reduction supports the idea that the queen's spermatheca evolved a highly specific biochemical machinery to keep sperm viable for long periods of time, consistent with *Atta* queens potentially surviving for 20 years and producing in the order of 100 million fertilized eggs (19, 22, 34). Both proteomes appeared to contain a large number of proteins involved in protein degradation and proteolysis, which we were able to functionally link to both the initiation and termination of mutual sperm incapacitation (supplemental Table S2 and supplemental Fig. S2).

When we inspected the 22 proteins that had changed in abundance after SF had been exposed to SpF (DIGE experiment), we found four that increased in abundance to have known functions in energy metabolism and that three are involved in response to oxidative stress and immunity (Table I, Fig. 4, and supplemental Table S3). Both these functions seem logical as adaptations to maximize queen survival and fertility. However, the SF proteins that were significantly reduced in abundance provided direct insights into the expression and control of sexual conflicts in leaf-cutting ants. Using a serine-specific protease inhibitor, we were able to reproduce the SpF neutralizing effect *in vitro*, which confirmed that serine proteases are directly involved in sperm incapacitation (Fig. 3C) and that they are eliminated by SpF proteins. Indeed, four proteins reduced in abundance are involved in proteolysis, including the serine proteases easter and snake.

In *Drosophila*, snake (specific to SF in *Atta*) and easter (present in both SpF and SF proteomes of *Atta*) are part of a proteolytic cascade that ultimately activates the Toll receptor during embryo development (35, 36), which initiates the innate immune system (37) by responding to the protein spätzle (38). This suggests that there is a connection between the incapacitation of rival sperm and cellular immunity functions in SF, consistent with other insect homologs of easter and snake being involved in the pro-phenoloxidase cascade (39, 40), which determines innate immune defenses mediated by self-non-self-recognition. Sperm incapacitation by rival SF could therefore have evolved via modifications of immune proteins that originally functioned to recognize pathogens and minimize disease transmission during mating in the strictly monogamous ancestors of the leaf-cutting ants. Proteins of the innate immune system are also very abundant in the SF of polyandrous honeybees (29) and have been shown to kill sexually transmitted diseases with high efficiency (41).

We detected that fragments of SERPIN B10 and of several serine proteases increased in abundance, indicating that the intact proteins were cleaved when SF came into contact with SpF (Table I). SERPINs are a class of protease inhibitors that irreversibly target serine proteases, which can mediate sperm-egg recognition (reviewed (42, 43)). Serine proteases

and SERPINs are further known to affect proteolytic cascades responsible for incapacitating and preserving sperm in mammals and solitary insects by protecting sperm against damage from female immune reactions (42). This is once more consistent with the conjecture that immune proteins might have been precursors for the evolution of sperm competition proteins (42). We detected a total of five different SERPIN proteins in the total SpF proteome, two of which were also present in the SF proteome, including SERPIN B10, the protein we found to be specifically targeted by female secretions. This suggests that female spermathecal secretions specifically eliminate easter and snake (especially the latter, which is SF specific), possibly with the three SpF-specific SERPINs.

As to the remaining proteins targeted by the SpF (Table I), carboxypeptidase B, acid phosphatase, and hydroxyacid-oxoacid transhydrogenase have many biological functions, including protein digestion and regulating the insect molting process (32, 44). The uncharacterized protein Acol_04113, the most abundant protein in *A. colombica* SF but not detected in SpF, shows strong homology with a family of uncharacterized ant proteins (27) that all share an Armadillo-like domain normally used in protein binding. Uncharacterized protein Acol_04113 also has some degree of homology with mucins, which are glycoproteins belonging to the extracellular matrix, and with the BRO-1 domain involved in protein targeting to the lysozyme. Acol_04113 is degraded into at least three fragments when SF and SpF come into contact (supplemental Fig. S3), highlighting its importance as target for elimination by SpF.

The acid phosphatase, which has also been found in moth testes (45), cleaves phosphate groups from other proteins and has been shown to liquefy human ejaculates, where it has consistently negative effects on male fertility in conjunction with the serine protease kallikrein (46). Finally, *Atta* SpF reduced the abundance of hydroxyacid-oxoacid transhydrogenase in SF, an enzyme that catalyzes several oxidation-reduction reactions, including the interconversion of 2-hydroxyglutarate and 2-oxoglutarate, which are key intermediates in the TCA cycle and amino acid metabolism (47). Further research will be required to resolve the complex molecular functioning of these less-well-studied proteins in more detail, but our results suggest that sexual conflict over sperm storage is mediated by very few proteins and that the known characteristics of these proteins are consistent with them being instruments of antagonism between male and female reproductive interests (Table I).

Our follow-up experiments generated several lines of independent evidence that the proteins we identified are indeed instrumental in the dynamics of sperm competition and sperm preservation, even though further details remain to be studied in the future. Increased exposure time of SF to SpF *in vivo* increased the survival of rival sperm, and a mixture of general protease inhibitors and a specific serine protease inhibitor both terminated the harmful effect of SF on rival sperm. These

in vitro results corroborate the idea that spermathecal secretions have a general and indiscriminate preservation function for the viability of newly stored sperm mixtures (see (19) for phenotypic evidence) by neutralizing hostile SF proteins. In particular, serine proteases from SF seem to have an important role and will likely be gratifying targets in follow-up studies.

A mechanistic understanding of sexual conflict does not only require knowledge of the interactions between male and female proteomes but also depends on the morphological traits that determine the efficiency by which the sexes can impose and control their respective interests. Ants and many other evolutionary-derived hymenopteran social bees are peculiar in that males are unable to physically enhance their individual interests because they either die shortly after copulation or continue to seek copulations with other queens (16). This provides newly inseminated queens with considerable opportunities to control the sperm storage process in ways that maximise female reproductive success. Consistent with this logic, dissection of artificially and naturally inseminated *A. colombica* queens revealed that spermathecae are highly muscular and able to contract continuously between the two spermathecal lobes (supplemental Movie S1). These contractions are likely instrumental for queens to mix newly stored sperm with spermathecal gland secretions, and their existence is consistent with queens rapidly gaining control over hostile interactions between rival ejaculates.

Comparisons between our results and those obtained for honeybees (29, 48) and fruit flies (30, 49) showed that the *A. colombica* SF proteins targeted by SpF are not expressed in the SF of these other insects (supplemental Table S4), even though homologs are universally present in their genomes. This mutual exclusiveness is consistent with the independent evolution of polyandry in these insect lineages (50) but also suggests rapid evolutionary dynamics and continuous recruitment (over evolutionary time) of novel proteins for attack and defense during insemination. In a more general comparative sense, the 24% overlap between SF and SpF proteomes in *Atta* (Fig. 4) was similar to the 20% overlap reported in honeybees (48). This overall proportional similarity may reflect functional evolutionary convergence across social insect lineages that independently evolved obligate polyandry from ancestral ants and bees that were monandrous (50). These similarities across taxa are consistent with SF of polyandrous social insects being universally selected to enhance short-term sperm survival and to express proteolytic activity to reduce the survival of rival sperm as shown phenotypically in previous studies of *Atta* leaf cutter ants and honeybees (19). In contrast, female secretions are expected to have evolved molecular mechanisms to sustain long-term sperm storage and to neutralize hostile SF proteins, but there is no compelling reason to expect that ants and bees recruited the same proteins for their sexually antagonistic arms races.

Taken together, the results of our study underline that complete lack of re-mating later in life imposes strong selective pressure on polyandrous ant queens to prevail in evolutionary arms races with their mates to secure maximal storage of both viable and genetically diverse sperm. Whether queens are capable to discriminate between sperm from different males during this process is unknown, but any such cryptic female choice would have to be based on mechanisms that are more complex than self-non-self-recognition, which appears to drive the interactions we document here. In this context, it might be of interest that the SF-specific protein Acol_04113 sharply decreases in abundance in the spermatheca after insemination. The partial homology of this protein with mucins, which are glycoproteins known to mediate complex recognition processes via differential glycosylation (51), suggests that Acol_04113 could mediate preferential recognition and discrimination between variants of the same protein molecules. Interactions of this kind have been shown to be important for male fertility in humans because they affect sperm binding to oocytes (52, 53). Further research in this area will be required to understand the mechanisms that inseminated queens might use to discriminate between ejaculates.

To our knowledge, we provide the first study that documents proteomic interactions at a high level of detail in any social insect. The insights that we obtained match predictions from evolutionary theory and underline the unique opportunities that ants and other social insects provide for studying the dynamics of sexual conflict. The interactions that we elucidated appear to involve a limited set of male and female proteins as molecular agents or counteragents (either alone or as key parts of molecular cascades) for sperm competition and sperm survival during insemination and sperm storage. The involvement of rather few specific proteases and protease inhibitors will facilitate future studies of the molecular dynamics that induce or avoid harm to sperm cells during the sperm storage process in *Atta* and possibly also other polyandrous social insects such as the honeybee and some vespine wasps (50).

Acknowledgments—This study was funded by a Queen Elizabeth II Fellowship, a Future Fellowship and a Discovery Project from the Australian Research Council (ARC) to B.B., a start-up grant to B.B. offered by the University of California Riverside, a Centre of Excellence grant by the Danish National Research Foundation (DNRF57) and an Advanced ERC grant to J.J.B., and a Marie-Curie International Outgoing Fellowship to S.P.A.d.B. We gratefully acknowledge the Smithsonian Tropical Research Institute in Panama for providing facilities and logistic support, and the Autoridad Nacional de Ambiente (ANAM) for issuing collection and export permits for collected ant samples. We thank Marlene Stürup for help with the field experiments and Clelia Gasparini, Joanito Liberti, and Harvey Millar for helpful discussions.

DATA AVAILABILITY

The datasets supporting this article have been submitted to PRIDE (PXD011306 for the SF and SpF proteomes and

PXD011320 for the DIGE experiment) and are available for download online. Eleven additional files are available as supplement of the online version of this paper, including four supplemental figures, four supplemental tables, two supplemental files, and a supplemental movie.

☐ This article contains [supplemental material Tables S1-S3, Figs. S1-S4, and Movie S1](#).

✉ To whom correspondence may be addressed: Centre for Social Evolution, Department of Biology, University of Copenhagen, 2100 Copenhagen, Denmark. Tel.: +45 35321340; E-mail: JJBoomsma@bio.ku.dk.

✉ To whom correspondence may be addressed: Center for Integrative Bee Research (CIBER), Department of Entomology, University of California, Riverside, CA 92506. Tel.: +1 951 827 5833, Fax: +1 951 827 3086; E-mail: boris.bar@ucr.edu.

§§ These authors contributed equally.

Author contributions: R.D., S.P.A.d.B., J.J.B., and B.B. designed research; R.D., J.G., S.P.A.d.B., M.K., J.M.M., and B.B. performed research; R.D., J.G., S.P.A.d.B., M.K., J.M.M., J.J.B., and B.B. analyzed data; R.D., J.G., J.J.B., and B.B. wrote the paper; and B.B. contributed new reagents/analytic tools.

REFERENCES

- Birkhead, T. R., Hosken, D. J., and Pitnick, S. (2009) *Sperm Biology: An Evolutionary Perspective*. 1st ed. Academic Press, London
- Peretti, A. V., and Aisenberg, A. (2015) *Cryptic Female Choice in Arthropods: Patterns, Mechanisms and Prospects*. Springer International Publishing, Cham (Switzerland) and New York
- Shuker, D. M., and Simmons, L. W. (2014) *The Evolution of Insect Mating System*. Oxford University Press, Oxford
- Firman, R. C., Gasparini, C., Manier, M. K., and Pizzari, T. (2017) Postmating female control: 20 years of cryptic female choice. *Trends Ecol. Evol.* **32**, 368–382
- Harrison, P. W., Wright, A. E., Zimmer, F., Dean, R., Montgomery, S. H., Pointer, M. A., and Mank, J. E. (2015) Sexual selection drives evolution and rapid turnover of male gene expression. *Proc. Natl. Acad. Sci. U.S.A.* **112**, 4393–4398
- Wilkinson, G. S., Breden, F., Mank, J. E., Ritchie, M. G., Higginson, A. D., Radwan, J., Jaquiere, J., Salzburger, W., Arriero, E., Barribeau, S. M., Phillips, P. C., Renn, S. C., and Rowe, L. (2015) The locus of sexual selection: Moving sexual selection studies into the post-genomics era. *J. Evol. Biol.* **28**, 739–755
- Sirota, L. K., Wong, A., Chapman, T., and Wolfner, M. F. (2014) Sexual conflict and seminal fluid proteins: A dynamic landscape of sexual interactions. *Cold Spring Harb. Perspect. Biol.* **7**, a017533
- Lüpold, S., Pitnick, S., Berben, K. S., Blengini, C. S., Belote, J. M., and Manier, M. K. (2013) Female mediation of competitive fertilization success in *Drosophila melanogaster*. *Proc. Natl. Acad. Sci. U.S.A.* **110**, 10693–10698
- Pitnick, S., and Pfennig, D. W. (2014) Brotherly love benefits females. *Nature* **505**, 626–627
- Poiani, A. (2006) Complexity of seminal fluid: A review. *Behav. Ecol. Sociobiol.* **60**, 289–310
- Liu, H., and Kubli, E. (2003) Sex-peptide is the molecular basis of the sperm effect in *Drosophila melanogaster*. *Proc. Natl. Acad. Sci. U.S.A.* **100**, 9929–9933
- Avila, F. W., Sirota, L. K., LaFlamme, B. A., Rubinstein, C. D., and Wolfner, M. F. (2011) Insect seminal fluid proteins: Identification and function. *Annu. Rev. Entomol.* **56**, 21–40
- Rice, W. R. (1996) Sexually antagonistic male adaptation triggered by experimental arrest of female evolution. *Nature* **381**, 232–234
- Liberti, J., Baer, B., and Boomsma, J. J. (2016) Queen reproductive tract secretions enhance sperm motility in the ants. *Biol. Lett.* **12**, 20160722
- den Boer, S. P. A., Boomsma, J. J., and Baer, B. (2013) A technique to artificially inseminate leafcutter ants. *Insectes Sociaux* **60**, 111–118
- Boomsma, J. J., Baer, B., and Heinze, J. (2005) The evolution of male traits in social insects. *Annu. Rev. Entomol.* **50**, 395–420

17. den Boer, S. P. A., Baer, B., Dreier, S., Aron, S., Nash, D. R., and Boomsma, J. J. (2009) Prudent sperm use by leaf-cutter ant queens. *Proc. R Soc. B-Biol. Sci.* **276**, 3945–3953
18. Baer, B., Armitage, S. A., and Boomsma, J. J. (2006) Sperm storage induces an immunity cost in ants. *Nature* **441**, 872–875
19. den Boer, S. P., Baer, B., and Boomsma, J. J. (2010) Seminal fluid mediates ejaculate competition in social insects. *Science* **327**, 1506–1509
20. den Boer, S. P., Stürup, M., Boomsma, J. J., and Baer, B. (2015) The ejaculatory biology of leafcutter ants. *J. Insect. Physiol.* **74**, 56–62
21. Holldobler, B., and Bartz, S. H. (1985) Sociobiology of reproduction in ants. In: Holldobler B., ed. *Experimental Behavioral Ecology*, pp 237–257. G. Fischer Verlag, Stuttgart
22. den Boer, S. P. A., Boomsma, J. J., and Baer, B. (2008) Seminal fluid enhances sperm viability in the leafcutter ant *Atta colombica*. *Behav. Ecol. Sociobiol.* **62**, 1843–1849
23. Arentz, G., Weiland, F., Oehler, M. K., and Hoffmann, P. (2015) State of the art of 2D DIGE. *Proteom Clin. Appl.* **9**, 277–288
24. Bogaerts, A., Baggerman, G., Vierstraete, E., Schoofs, L., and Verleyen, P. (2009) The hemolymph proteome of the honeybee: Gel-based or gel-free? *Proteomics* **9**, 3201–3208
25. Grassl, J., Scaife, C., Polden, J., Daly, C. N., Iacovella, M. G., Dunn, M. J., and Clyne, R. K. (2010) Analysis of the budding yeast pH 4–7 proteome in meiosis. *Proteomics* **10**, 506–519
26. Shevchenko, A., Wilm, M., Vorm, O., and Mann, M. (1996) Mass spectrometric sequencing of proteins from silver stained polyacrylamide gels. *Anal. Chem.* **68**, 850–858
27. Nygaard, S., Hu, H., Li, C., Schiøtt, M., Chen, Z., Yang, Z., Xie, Q., Ma, C., Deng, Y., Dikow, R. B., Rabeling, C., Nash, D. R., Wcislo, W. T., Brady, S. G., Schultz, T. R., Zhang, G., and Boomsma, J. J. (2016) Reciprocal genomic evolution in the ant-fungus agricultural symbiosis. *Nat. Commun.* **7**, 12233
28. Yang, F., Shen, Y., Camp, D. G., 2nd, and Smith, R. D. (2012) High-pH reversed-phase chromatography with fraction concatenation for 2D proteomic analysis. *Expert Rev. Proteomics* **9**, 129–134
29. Grassl, J., Peng, Y., Baer-Imhoof, B., Welch, M., Millar, A. H., and Baer, B. (2017) Infections with the sexually transmitted pathogen *Nosema apis* trigger an immune response in the seminal fluid of honey bees (*Apis mellifera*). *J. Proteome Res.* **16**, 319–334
30. Ravi Ram, K., and Wolfner, M. F. (2007) Seminal influences: *Drosophila* Acps and the molecular interplay between males and females during reproduction. *Integr. Comp. Biol.* **47**, 427–445
31. Beek, J., Nauwynck, H., Appeltant, R., Maes, D., and Van Soom, A. (2015) Inhibitors of serine proteases decrease sperm penetration during porcine fertilization in vitro by inhibiting sperm binding to the zona pellucida and acrosome reaction. *Theriogenology* **84**, 1378–1386
32. Gatehouse, J. A. (2013) Insect Carboxypeptidases. In: Rawlings, N. D., and Salvesen, G. S., eds. *Handbook of Proteolytic Enzymes, Vols 1 and 2*, 3rd ed., pp. 1366–1370. Elsevier Science Publishers Bv, Amsterdam
33. Malta, J., Martins, G. F., Marques, A. E., Games, P. D., Zanuncio, J. C., Baracat-Pereira, M. C., and Salomao, T. M. F. (2014) Insights into the proteome of the spermatheca of the leaf-cutting ant *Atta sexdens rubropilosa* (Hymenoptera: Formicidae). *Fla Entomol.* **97**, 1856–1861
34. Paynter, E., Millar, A. H., Welch, M., Baer-Imhoof, B., Cao, D., and Baer, B. (2017) Insights into the molecular basis of long-term storage and survival of sperm in the honeybee (*Apis mellifera*). *Scientific Reports* **7**, 40236
35. Misra, S., Hecht, P., Maeda, R., and Anderson, K. V. (1998) Positive and negative regulation of Easter, a member of the serine protease family that controls dorsal-ventral patterning in the *Drosophila* embryo. *Development* **125**, 1261–1267
36. Smith, C. L., Giordano, H., Schwartz, M., and DeLotto, R. (1995) Spatial regulation of *Drosophila* Snake protease activity in the generation of dorsal-ventral polarity. *Development* **121**, 4127–4135
37. Valanne, S., Wang, J.-H., and Rämét, M. (2011) The *Drosophila* Toll signaling pathway. *J. Immunol.* **186**, 649–656
38. Jang, I. H., Chosa, N., Kim, S. H., Nam, H. J., Lemaitre, B., Ochiai, M., Kambris, Z., Brun, S., Hashimoto, C., Ashida, M., Brey, P. T., and Lee, W. J. (2006) A spatzle-processing enzyme required for toll signaling activation in *Drosophila* innate immunity. *Dev. Cell* **10**, 45–55
39. Kim, M. S., Baek, M. J., Lee, M. H., Park, J. W., Lee, S. Y., Soderhall, K., and Lee, B. L. (2002) A new easter-type serine protease cleaves a masquerade-like protein during prophenoloxidase activation in *Holotrichia diomphalia* larvae. *J. Biol. Chem.* **277**, 39999–40004
40. Wang, Y., and Jiang, H. (2007) Reconstitution of a branch of the *Manduca sexta* prophenoloxidase activation cascade in vitro: Snake-like hemolymph proteinase 21 (HP21) cleaved by HP14 activates prophenoloxidase-activating proteinase-2 precursor. *Insect. Biochem. Mol. Biol.* **37**, 1015–1025
41. Peng, Y., Grassl, J., Millar, A. H., and Baer, B. (2016) Seminal fluid of honeybees contains multiple mechanisms to combat infections of the sexually transmitted pathogen *Nosema apis*. *Proc. R Soc. B-Biol. Sci.* **283**, 51785–51785
42. Laflamme, B. A., and Wolfner, M. F. (2013) Identification and function of proteolysis regulators in seminal fluid. *Mol. Reprod. Dev.* **80**, 80–101
43. Huntington, J. A. (2011) Serpin structure, function and dysfunction. *J. Thromb. Haemost.* **9**, 26–34
44. Ote, M., Mita, K., Kawasaki, H., Daimon, T., Kobayashi, M., and Shimada, T. (2005) Identification of molting fluid carboxypeptidase A (MF-CPA) in *Bombyx mori*. *Comp. Biochem. Physiol. B - Biochem. Mol. Biol.* **141**, 314–322
45. Gilbert, L. I., and Huddleston, C. J. (1965) Testicular acid phosphatase in giant silkmoths. *J. Insect. Physiol.* **11**, 177–194
46. Brillard-Bourdet, M., Réhault, S., Juliano, L., Ferrer, M., Moreau, T., and Gauthier, F. (2002) Amidolytic activity of prostatic acid phosphatase on human semenogelins and semenogelin-derived synthetic substrates. *Eur. J. Biochem.* **269**, 390–395
47. Kardon, T., Noël, G., Vertommen, D., and Schaftingen, E. V. (2006) Identification of the gene encoding hydroxyacid-oxoacid transhydrogenase, an enzyme that metabolizes 4-hydroxybutyrate. *FEBS Lett.* **580**, 2347–2350
48. Baer, B., Heazlewood, J. L., Taylor, N. L., Eubel, H., and Millar, A. H. (2009) The seminal fluid proteome of the honeybee *Apis mellifera*. *Proteomics* **9**, 2085–2097
49. Findlay, G. D., Sitnik, J. L., Wang, W., Aquadro, C. F., Clark, N. L., and Wolfner, M. F. (2014) Evolutionary rate covariation identifies new members of a protein network required for *Drosophila melanogaster* female post-mating responses. *PLoS Genet.* **10**, e1004108
50. Boomsma, J. J. (2013) Beyond promiscuity: Mate-choice commitments in social breeding. *Phil. Trans. R Soc. B* **368**
51. Hollingsworth, M. A., and Swanson, B. J. (2004) Mucins in cancer: Protection and control of the cell surface. *Nat. Rev. Cancer* **4**, 45–60
52. Saraswat, M., Joenväärä, S., Tomar, A. K., Singh, S., Yadav, S., and Renkonen, J. (2016) N-Glycoproteomics of human seminal plasma glycoproteins. *J. Proteome Res.* **15**, 991–1001
53. Pang, P.-C., Chiu, P. C., Lee, C.-L., Chang, L.-Y., Panico, M., Morris, H. R., Haslam, S. M., Khoo, K.-H., Clark, G. F., Yeung, W. S., and Dell, A. (2011) Human sperm binding is mediated by the sialyl-Lewis (x) oligosaccharide on the zona pellucida. *Science* **333**, 1761–1764