

UC Davis

UC Davis Previously Published Works

Title

Coronary artery calcium progression after coronary artery bypass grafting surgery.

Permalink

<https://escholarship.org/uc/item/9sz4w5mr>

Journal

Open Heart, 8(1)

ISSN

2053-3624

Authors

Abazid, Rami
Romsa, Jonathan
Akincioglu, Cigdem
[et al.](#)

Publication Date

2021-06-01

DOI

10.1136/openhrt-2021-001684

Peer reviewed

openheart Coronary artery calcium progression after coronary artery bypass grafting surgery

Rami M Abazid ¹, Jonathan G Romsa,¹ Cigdem Akincioglu,¹ James C Warrington,² Yves Bureau,¹ Bob Kiaii,³ William C Vezina¹

To cite: Abazid RM, Romsa JG, Akincioglu C, *et al.* Coronary artery calcium progression after coronary artery bypass grafting surgery. *Open Heart* 2021;**8**:e001684. doi:10.1136/openhrt-2021-001684

Received 14 April 2021
Accepted 31 May 2021

ABSTRACT

Objectives Accelerated atherosclerosis is a well-established phenomenon after coronary artery bypass grafting surgery (CABG). In this study, we analysed coronary artery calcium (CCS) progression after CABG. **Methods** We retrospectively measured the CCS Agatston score (AS), volume score (VS) and mass score (MS) of 39 patients before and after CABG. The annualised CCS change and annualised CCS percent change of each coronary artery, coronary artery segments proximal and distal to anastomosis were analysed. **Results** Mean age at the time of the surgery was 59.8±8.5 years. Follow-up period between the first and second CT scans was 6.7±2.8 (range, 1.1–12.8) years. Annualised CCS percent change (AS, VS and MS) of the coronary segments proximal-to-anastomosis did not differ from that of the non-grafted coronary arteries as follow: segments proximal-to-anastomosis: median (Q1–Q3) 12.8 (5.0–37.4), 13.7 (6.1–41.1) and 14.9 (5.4–53.7), left main coronary artery 12.6 (7.4–43.8), 22.0 (8.1–44.4) and 18.2 (7.3–57.4), non-grafted left circumflex artery: 13.5 (4.4–38.1), 10.5 (2.9–45.2) and 11.5 (7.1–47.9) and non-grafted right coronary artery: 31.4 (14.4–74.5), 25.2 (16.7–62.0) and 31.3 (23.8–85.6), respectively. Likewise, annualised percent change (AS, VS and MS) was similar between the native coronary arteries. Multivariate regression analysis showed that diabetes mellitus was the only predictor of annualised percent progression of the total CCS of >15% (HR, 8.12; 95% CI, 1.05 to 26.6; p=0.04).

Conclusion The CCS post-CABG did not follow an accelerated progression process. Among coronary artery disease risk factors, diabetes mellitus is the only predictor of annualised CCS percent progression of >15% post-CABG.

INTRODUCTION

Accelerated atherosclerosis (AA), so-called rapid atherosclerosis, of proximal coronary segments is a well-established syndrome after coronary artery bypass grafting surgery (CABG).^{1–3} Initial reports showed that coronary artery segments proximal to severe luminal stenosis develop rapid atherosclerotic progression after CABG.¹ A similar phenomenon was described after CABG in

Key questions

What is already known about this subject?

- ▶ Accelerated atherosclerosis is a well-established phenomenon of proximal coronary segments after coronary artery bypass grafting surgery (CABG).

What does this study add?

- ▶ This study confirmed that the coronary calcium has a non-accelerated progression post-CABG.

How might this impact on clinical practice?

- ▶ The present study gives insight on the process of atherosclerotic plaques components progression after CABG.

the grafted coronary artery segments with luminal stenosis of <50% as well as in normal segments lying between a high-grade stenosis and the anastomosis site.^{2–4}

Spontaneous atherosclerosis has a complex evolution which consists of six distinguishable stages, each with particular morphological characteristics related to the changes in lipid accumulation, thrombotic deposits and calcification.⁵ In contrast, AA describes an exceedingly aggressive subset with a pathophysiology involving a denuding injury of the vascular intima and endothelium followed by thrombosis and proliferation of the smooth muscle cells and subsequently fibrosis results in the rapid progression of the lesions. Atheroma containing calcium is considered as an advanced atherosclerotic lesion and is classified as type V.⁵ Since total coronary calcium strongly correlates with total plaque burden and the average coronary calcium area is approximately 20% of the total histological plaque area,^{6,7} quantification of coronary artery calcium by CT provides an estimation of an extent and progression of coronary atherosclerosis.

Coronary CT is the reference tool to quantify coronary artery calcium (CCS) and to differentiate calcified from non-calcified



© Author(s) (or their employer(s)) 2021. Re-use permitted under CC BY-NC. No commercial re-use. See rights and permissions. Published by BMJ.

¹London Health Sciences Centre, London, Ontario, Canada

²Nuclear Medicine, London Health Sciences Centre, London, Ontario, Canada

³Division of Cardiac Surgery, University of California Davis, Davis, California, USA

Correspondence to

Dr Rami M Abazid; ramiabazid@yahoo.com

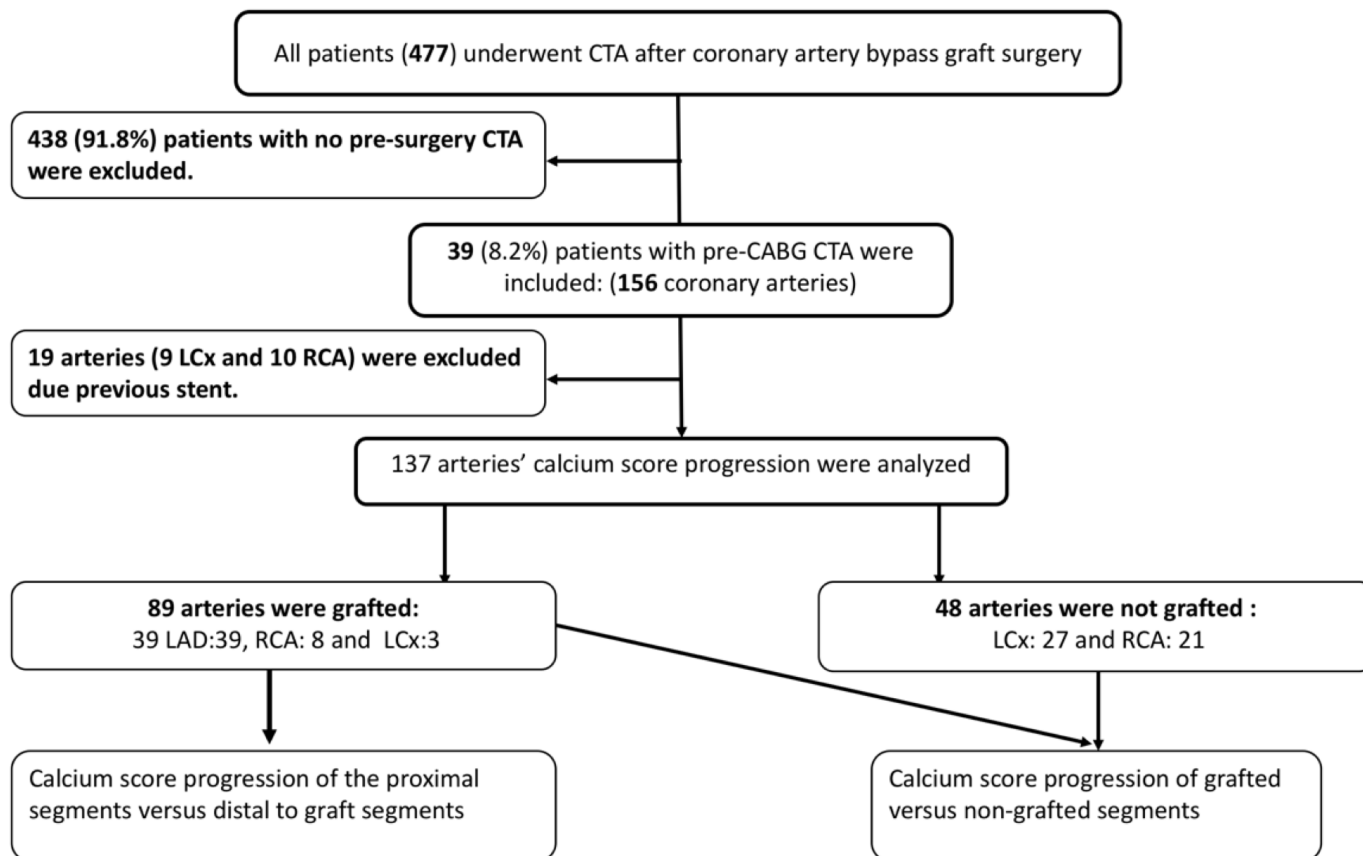


Figure 1 Patients inclusion. CABG, coronary artery bypass grafting surgery; CTA, CT angiography; LAD, left anterior descending artery; LCx, left circumflex artery; RCA, right coronary artery.

plaques. In contrast, invasive coronary angiography was used in previous reports to assess AA post CABG and is a lumenogram that has a major limitation in determining coronary artery wall composition.⁸

To date, there are no reports that analyse the progression rate of calcium in the coronary artery tree after CABG. The aim of this study is to determine the progression of CCS post-CABG using CT and determine whether it differs from that of the non-grafted vessels.

MATERIALS AND METHODS

Study population

We retrospectively analysed all patients who had CABG between January 2005 and December 2018 who had a pre-CABG calcium score scan (either as diagnostic CT angiography (CTA) or as planning prior to minimal-invasive surgery) and were referred for follow-up CTA (30 asymptomatic patients were referred as part of research follow-up study and 9 patients with atypical chronic chest pain). Only patients with CT scan within 3 months prior to the CABG and more than 12 months after surgery were included. Stented coronary arteries were excluded, [figure 1](#). This study was approved by the ethics committee and all research patients signed a consent to have follow-up CTA and to allow their data to be entered into a registry. All CTs were performed using a GE 64-detector lightspeed CT.

Calcium score measurements

CT images of 39 patients were reviewed using dedicated software (AquariusNet Thin Client; TeraRecon, San Mateo, California, USA) to measure three different calcium scores: Agatston score (AS), volume score (VS) and mass score (MS). The total calcium score of the coronary tree was the sum of the CCS of left main coronary artery (LM), left anterior descending artery (LAD), left circumflex artery (LCx) and the right coronary artery (RCA). CCS of the grafted coronary arteries was divided into CCS proximal to the graft and CCS distal to the graft, [figure 1](#). Angiographic landmarks such as side-branches or myocardial bridges of the post-CABG CTA were used as a guidance to define anastomosis sites on the pre-CABG and post-CABG calcium score scans. Calcification of the coronary artery branches originating proximal to graft anastomosis was added to the proximal CCS segments.

Statistical analysis

Quantitative variables were expressed as means \pm SD and categorical variables were expressed as frequencies with 95% CI. The progression of CCS scores (AS, VS and MS) was expressed as three variables⁹:

- ▶ Absolute CCS change=CCS (Post-CABG)–CCS (Pre-CABG).
- ▶ Annualised CCS change=Absolute CCS Differences/ follow-up (in years).

- Annualised CCS percent change = $(\text{CCS (Post-CABG)} - \text{CCS (Pre-CABG)}) / \text{CCS (Pre-CABG)} \times 100$ (for patients with non-zero CCS Pre-CABG).

The annualised percent change of >15% was considered to be significant.¹⁰

We used paired t-test to compare the CCS scores between segments proximal versus distal to anastomosis, and to compare relative CCS between proximal segments versus the non-grafted coronary arteries, and the four coronary arteries. Our results were verified using non-parametric Wilcoxon test. Multivariate regression analysis was used to define predictors including traditional risk factors with total CCS annualised percent change of >15%. A p value <0.05 was considered statistically significant. All statistical analyses were performed using SPSS for Windows (SPSS V.19.0).

RESULTS

In total, 39 patients were included (156 coronary arteries). The total number of grafted vessels was 50: 39 left internal thoracic artery to LAD, 8 saphenous vein graft (SVG) to RCA and 3 SVG to LCx. Forty-eight coronary arteries (27 LCx and 21 RCA) were not grafted. Nineteen coronary arteries (9 LCx and 10 RCA) were excluded due to previous stent deployment, [figure 1](#). The mean age at the time of the surgery was 59.8 (± 8.5) years and 28/39 (71.8%) were men. Other baseline characteristics are shown in [table 1](#).

The pre-CABG and post-CABG CCS of the coronary artery tree, the CCS absolute differences and the annualised percent differences are shown in [table 2](#).

The mean follow-up period between the first and second CT scan was 6.7 (± 2.8), (1.1–12.8) years.

We found that annualised CCS percent change was not significantly different between the native coronary arteries with a median AS and (Q1–Q3) of LM: 14.2 (8.3–43.4), LAD: 14.4 (5.1–41.3), LCx: 16.1 (4.7–39.8) and RCA: 24.8 (15.8–65.2); VS as follow: LM: 22.7 (7.7–43.9), LAD: 13.9 (5.9–38.4), LCx: 16.6 (2.9–45.7) and RCA: 20.4 (10.8–58.1) and MS: LM: 16.8 (7.2–57.5), LAD: 14.7 (5.3–50.4), LCx: 12.4 (7.1–63.9) and RCA: 32.2 (21.2–70.6), [figure 2](#).

Similarly, annualised CCS percent change of the coronary segments proximal-to-anastomosis did not differ from that of the non-grafted coronary arteries with a median AS as follow: segments proximal-to-anastomosis: 12.8 (5.0–37.4), LM: 12.6 (7.4–43.8), non-grafted LCx: 13.5 (4.4–38.1) and non-grafted RCA: 31.4 (14.4–74.5); VS as follow: proximal-to-graft segments: 13.7 (6.1–41.1), LM: 22.0 (8.1–44.4), non-grafted LCx: 10.5 (2.9–45.2) and non-grafted RCA: 25.2 (16.7–62.0), MS as follow: segments proximal-to-anastomosis: 14.9 (5.4–53.7), LM: 18.2 (7.3–57.4), non-grafted LCx: 11.5 (7.1–47.9) and non-grafted RCA: 31.3 (23.8–85.6), [figure 3](#).

However, the annualised CCS change was significantly higher in pre-graft when compared with post-graft: AS changes 61.2 (± 10.1), versus 2.6 (± 8.8), $p < 0.0001$, VS

Table 1 Baseline characteristics

Variables	
Age, mean \pm SD, years	59.8 \pm 8.5
Gender, n (%)	28/39 (71.8)
Diabetes, n (%)	11/39 (28.2)
Hypertension, n (%)	30/39 (76.9)
Smoking, n (%)	21/39 (53.8)
Family history of CAD, n (%)	25/39 (64.1)
Dyslipidaemia, n (%)	32/39 (82.1)
Left ventricular ejection fraction, %	54.7
Medications, n (%)	
Beta-blocker	19/39 (48.7)
Calcium channel blocker	10/39 (25.6)
ACEI/ARB	23/39 (58.9)
Antiplatelet	37/39 (94.9)
Nitroglycerin	6/39 (15.4)
Statin therapy	35/39 (89.7)
Diuretic	6/39 (15.4)
Percutaneous coronary intervention, n (%)	14/39 (35.9%)
RA-CABG	30/39 (76.9)
LITA graft used	39/39 (100)
Number of coronary arteries stenosis, n (%)	
Three vessel coronary artery disease/LM	8/31 (20.5)
Two vessel coronary artery disease	19/31 (48.8)
Single-vessel coronary artery disease	12/31 (30.7)

ACEI, angiotensin-converting enzyme inhibitors; ARB, angiotensin II receptor blockers; CAD, coronary artery disease; LITA, Left internal thoracic artery; LITA, Left internal thoracic artery; LM, left main coronary artery; RA-CABG, robotic-assisted coronary artery bypass grafting surgery.

changes 16.2 (± 25.7), versus 1.2 (± 4.4), $p < 0.0001$, and MS changes 4.7 (± 6.9), versus 0.3 (± 1.1), $p < 0.0001$ [figure 4](#).

19/39 (48.7%) of the patients had annualised percent changes (AS, VS and MS) of the total CCS of >15%. Multivariate regression analysis including the traditional risk factors of coronary artery disease (CAD) was used to define the predictors of annualised percent progression of the total CCS of >15% which showed that diabetes was the only predictor of rapid progression with HR of 8.12, 95% CI (1.05 to 26.6), $p = 0.04$ ([table 3](#)).

DISCUSSION

In this study, in-depth progression of the three different calcium scores (Agatston, volume and mass) post-CABG was analysed. We found that the annualised CCS percent change did not differ between the coronary arteries (LM, LAD, LCx and RCA), nor between segments proximal to anastomosis compared with the non-grafted coronary arteries. We found that diabetes independently predicted annualised percent progression of the total CCS of more than 15% after CABG.

Table 2 Calcium scores of different coronary arteries presurgery and postsurgery

	Coronary arteries	Agatston score	Volume score	Mass score
CCS before CABG	Total CCS	594±804	402.1±523.1	109.6±149.9
	LM	48±77	32.9±51.5	9.8±17.4
	LAD	202±234	155.4±181.2	42.7±57.2
	LCx	140±290	110.5±223	28.8±58.6
	RCA	248±418	189.3±313.9	46.7±83.1
CCS after CABG	Total CCS	941±891	729.6±693.3	198.3±192.5
	LM	94±127	72.9±98.9	21.4±31.2
	LAD	358±318	280.8±253.6	72.1±66.1
	LCx	219±334	174.1±268.7	50.5±84.3
	RCA	238±374	335.1±455.5	86.5±121.9
Absolute CCS change	Total CCS	413±368	327.5±315.1	88.8±74.3
	LM	46±74	40.1±62.2	11.6±19.2
	LAD	156±159	125.4±136.8	29.4±33.0
	LCx	98±150	63.7±74.2	21.7±31.2
	RCA	182±239	145.7±201.3	39.8±51.2
Annualised CCS change	Total CCS	65±56	49.6±41.2	14.4±12.3
	LM	7±9	5.6±7.9	1.7±2.6
	LAD	23±23	18.2±18.8	4.4±4.3
	LCx	14±16	11.9±18.5	3.3±4.1
	RCA	31±37	24.2±30.3	7.4±10.2

CABG, coronary artery bypass grafting surgery; CCS, coronary artery calcium score; LAD, left anterior descending artery; LCx, left circumflex artery; LM, left main coronary artery; RCA, right coronary artery.

There are multiple invasive coronary angiography-based reports confirming the AA phenomenon post-CABG. Pereg *et al*² found that approximately 62% of patients developed at least one new total occlusion of the native coronary vessels within the first year after CABG. Total occlusion was five times more prevalent in coronary arteries with >90% stenosis before the surgery. The underlying mechanisms of AA that result in new coronary obstructions after CABG are not fully understood. Competitive blood flow in the proximal segments reduces wall shear stress proximal to anastomosis leading to endothelial dysfunction through downregulation of

prostacyclin and nitric oxide production, and upregulation of thrombomodulin and endothelin-1 production.^{11 12} Several studies showed a non-random high prevalence of coronary artery plaques in the proximal coronary tree. Grunfeld *et al*¹³ reported that the prevalence of proximally located plaques was two times that of the distally located plaques (79% vs 39%). Similarly, severe coronary obstruction is more common in the proximal segments of the coronary arteries.¹⁴⁻¹⁷ Unlike proximal and mid segment plaques, traditional CAD risk factors have no significant association with distal coronary plaques. However, Agatston CCS score >100

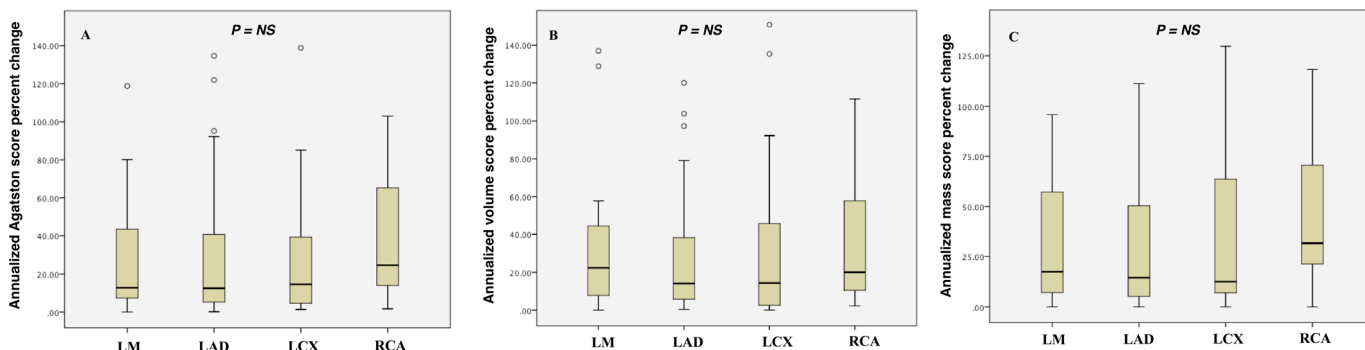


Figure 2 Relative calcium score changes. (A) Agatston score, (B) volume score and (C) mass score between the coronary arteries. LAD, left anterior descending artery; LCx, left circumflex artery; LM, left main coronary artery; RCA, right coronary artery.

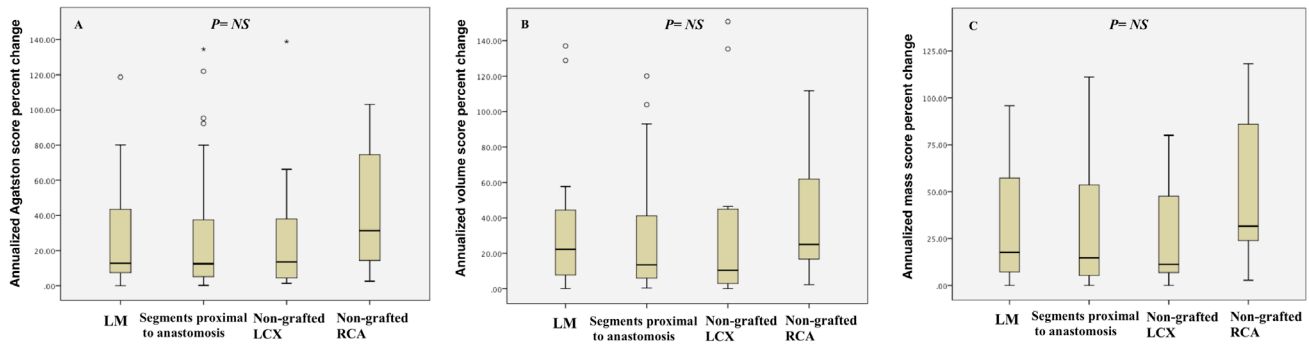


Figure 3 Relative calcium score changes. (A) Agatston score, (B) volume score and (C) mass score between pre-graft LAD segments and non-grafted coronary arteries. LAD, left anterior descending artery; LCx, left circumflex artery; LM, left main coronary artery; RCA, right coronary artery.

is considered a strong predictor for both proximal and distal plaques.¹³

Despite that annualised CCS percent change is more accurate than annualised CCS change, the former formula requires a pre-CABG CCS greater than zero. Annualised percent change calculation was omitted in our analysis as 42/50 (84%) of the distal segments of the grafted arteries had a CCS of zero before CABG.

In this study, the annualised CCS change in segments proximal to anastomosis was significantly higher than in the distal segments. A similar finding was demonstrated by Schmermund *et al*¹⁸ who analysed the natural history of CCS progression without CABG and determined the topographic distribution of coronary calcified plaques; he found that the annualised CCS change is greater in the proximal segments than the distal segments. In addition, he reported that annualised CCS progression was significantly less in segments with lower baseline CCS. As well, the non-significant variation of the annualised CCS percent change between proximal-to-graft segments and the non-grafted coronary arteries demonstrated in our study suggests that the greater annualised CCS change of the proximal segment is part of the natural history of atherosclerosis progression and not due to AA after CABG.

Our study is the first to analyse the CCS progression after CABG and gives insight on the process of atherosclerosis post-CABG. Given the non-rapid progression of

CCS in our study and the AA noted in previous reports, this supports an inhomogeneous progression of atherosclerotic plaque after CABG with greater progression of the non-calcified plaque components.

Among traditional CAD risk factors, diabetes was the only predictor for annualised percent change of the total CCS >15% after CABG which was previously reported by Hong *et al*¹⁹ who found that patients with diabetes have a higher whole plaque volume and calcified plaque progression than non-diabetics.

Previous reports demonstrated that the most important predictors of CCS progression were white ethnicity, male gender, hypertension, diabetes mellitus and family history of heart attack. Although statin therapy reduces the cardiac events, it has no significant impact on CAC progression.^{20 21}

Strength of this study

This is the first to analyse calcium score progression post-CABG. We used three different CCS scores with VS and MS being more reproducible than AS.²² There was a reasonable follow-up between the CT scans of 6.7 years.

Limitations

This study is single-centre analysis involving a small number of patients. No angiographic data were available to correlate coronary stenosis progression with calcium score progression.

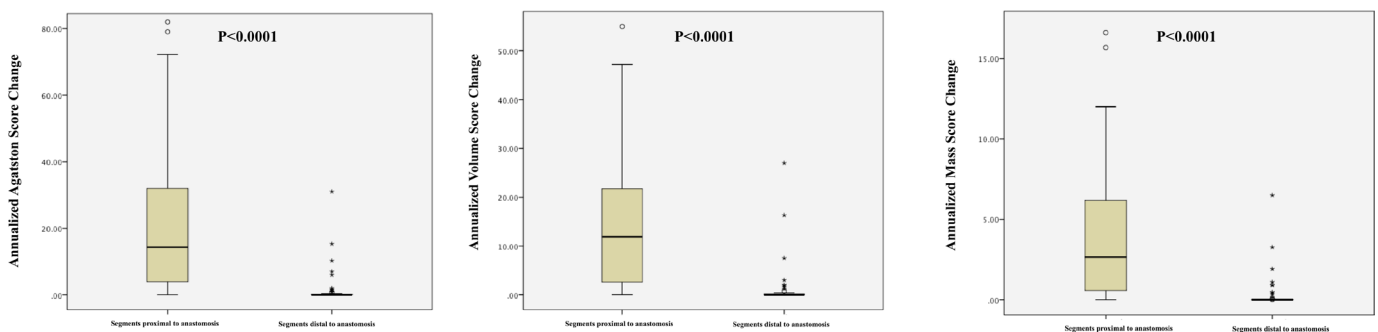


Figure 4 Absolute calcium score changes. (A) Agatston score, (B) volume score and (C) mass score between segments proximal to anastomosis and segments distal to anastomosis.

Table 3 Multivariate binary regression of coronary artery disease risk factors versus rapid progression

Variable	Multivariate binary regression			P value
	HR	HR (95% CI)		
		Lower	Upper	
Age	0.956	0.868	1.053	0.36
Male sex	0.718	0.141	3.648	0.69
Smoking	0.290	0.047	1.791	0.18
Diabetes	8.125	1.053	26.686	0.04
Hypertension	2.443	0.238	25.035	0.45
Dyslipidaemia	1.278	0.139	11.715	0.82
Family history of CAD	0.515	0.091	3.333	0.55

CAD, coronary artery disease.

CONCLUSION

This study supports inhomogeneous atherosclerotic plaque progression with a non-accelerated progression of the coronary calcium post-CABG. No significant differences in the annualised CCS percent change between the coronary arteries were observed. CCS progression did not differ between segments proximal to anastomoses compared with the non-grafted coronary arteries. Diabetes was the only CAD risk factor that independently predicted a significant annualised percent progression of CCS of more than 15% after CABG.

Contributors RMA contributed to conception of the work. RMA, JGR, BK and WCV contributed to the design of the work. RMA contributed to data collection. YB contributed to data analysis. RMA, YB, BK and WCV contributed to data interpretation. All authors contributed to critical revision of the article and final approval of the version to be published.

Funding The authors have not declared a specific grant for this research from any funding agency in the public, commercial or not-for-profit sectors.

Competing interests None declared.

Patient consent for publication Not required.

Ethics approval University of Western Ontario Health Sciences Research Ethics Board. The Cardiovascular Registry—13575E. This study was approved by the ethics committee and all research patients signed a consent to have follow-up CTA and to allow their data to be entered into a registry.

Provenance and peer review Not commissioned; externally peer reviewed.

Data availability statement Data are available upon reasonable request.

Open access This is an open access article distributed in accordance with the Creative Commons Attribution Non Commercial (CC BY-NC 4.0) license, which permits others to distribute, remix, adapt, build upon this work non-commercially, and license their derivative works on different terms, provided the original work is properly cited, appropriate credit is given, any changes made indicated, and the use is non-commercial. See: <http://creativecommons.org/licenses/by-nc/4.0/>.

ORCID iD

Rami M Abazid <http://orcid.org/0000-0002-8504-1930>

REFERENCES

- Cashin WL, Sanmarco ME, Nessim SA, *et al.* Accelerated progression of atherosclerosis in coronary vessels with minimal lesions that are bypassed. *N Engl J Med* 1984;311:824–8.
- Pereg D, Fefer P, Samuel M, *et al.* Native coronary artery patency after coronary artery bypass surgery. *JACC Cardiovasc Interv* 2014;7:761–7.
- Zouridakis EG, Schwartzman R, Garcia-Moll X, *et al.* Increased plasma endothelin levels in angina patients with rapid coronary artery disease progression. *Eur Heart J* 2001;22:1578–84.
- Ip JH, Fuster V, Badimon L, *et al.* Syndromes of accelerated atherosclerosis: role of vascular injury and smooth muscle cell proliferation. *J Am Coll Cardiol* 1990;15:1667–87.
- Stary HC, Chandler AB, Dinsmore RE, *et al.* A definition of advanced types of atherosclerotic lesions and a histological classification of atherosclerosis. A report from the Committee on Vascular Lesions of the Council on Arteriosclerosis, American Heart Association. *Arterioscler Thromb Vasc Biol* 1995;15:1512–31.
- Rumberger JA, Simons DB, Fitzpatrick LA, *et al.* Coronary artery calcium area by electron-beam computed tomography and coronary atherosclerotic plaque area. A histopathologic correlative study. *Circulation* 1995;92:2157–62.
- Blaha MJ, Mortensen MB, Kianoush S, *et al.* Coronary artery calcium scoring: is it time for a change in methodology? *JACC Cardiovasc Imaging* 2017;10:923–37.
- Tuzcu EM, Berkalp B, De Franco AC, *et al.* The dilemma of diagnosing coronary calcification: angiography versus intravascular ultrasound. *J Am Coll Cardiol* 1996;27:832–8.
- Budoff MJ, Hokanson JE, Nasir K, *et al.* Progression of coronary artery calcium predicts all-cause mortality. *JACC Cardiovasc Imaging* 2010;3:1229–36.
- Raggi P, Callister TQ, Shaw LJ. Progression of coronary artery calcium and risk of first myocardial infarction in patients receiving cholesterol-lowering therapy. *Arterioscler Thromb Vasc Biol* 2004;24:1272–7.
- Dancu MB, Berardi DE, Vanden Heuvel JP, *et al.* Asynchronous shear stress and circumferential strain reduces endothelial NO synthase and cyclooxygenase-2 but induces endothelin-1 gene expression in endothelial cells. *Arterioscler Thromb Vasc Biol* 2004;24:2088–94.
- Malek AM, Izumo S. Molecular aspects of signal transduction of shear stress in the endothelial cell. *J Hypertens* 1994;12:989–1000–99.
- Grunfeld C, Scherzer R, Varosy PD, *et al.* Relation of coronary artery plaque location to extent of coronary artery disease studied by computed tomographic angiography. *J Cardiovasc Comput Tomogr* 2010;4:19–26.
- Halon DA, Sapoznikov D, Lewis BS, *et al.* Localization of lesions in the coronary circulation. *Am J Cardiol* 1983;52:921–6.
- Montenegro MR, Eggen DA. Topography of atherosclerosis in the coronary arteries. *Lab Invest* 1968;18:586–93.
- McGill HC, McMahan CA, Herderick EE, *et al.* Effects of coronary heart disease risk factors on atherosclerosis of selected regions of the aorta and right coronary artery. PDAY Research Group. pathobiological determinants of atherosclerosis in youth. *Arterioscler Thromb Vasc Biol* 2000;20:836–45.
- Wasilewski J, Niedziela J, Osadnik T, *et al.* Predominant location of coronary artery atherosclerosis in the left anterior descending artery. The impact of septal perforators and the myocardial bridging effect. *Kardiochir Torakochirurgia Pol* 2015;12:379–85. vol..
- Schmermund A, Baumgart D, Möhlenkamp S, *et al.* Natural history and topographic pattern of progression of coronary calcification in symptomatic patients: an electron-beam CT study. *Arterioscler Thromb Vasc Biol* 2001;21:421–6.
- Kim U, Leipsic JA, Sellers SL, *et al.* Natural history of diabetic coronary atherosclerosis by quantitative measurement of serial coronary computed tomographic angiography: results of the paradigm study. *JACC Cardiovasc Imaging* 2018;11:1461–71.
- Kronmal RA, McClelland RL, Detrano R, *et al.* Risk factors for the progression of coronary artery calcification in asymptomatic subjects: results from the Multi-Ethnic Study of Atherosclerosis (MESA). *Circulation* 2007;115:2722–30.
- Rodriguez-Granillo GA, Carrascosa P, Bruining N. Progression of coronary artery calcification at the crossroads: sign of progression or stabilization of coronary atherosclerosis? *Cardiovasc Diagn Ther* 2016;6:250–8.
- Hong C, Bae KT, Pilgram TK. Coronary artery calcium: accuracy and reproducibility of measurements with multi-detector row CT—assessment of effects of different thresholds and quantification methods. *Radiology* 2003;227:795–801.