

UC Irvine

UC Irvine Previously Published Works

Title

Society of Interventional Radiology Position Statement on the Role of Percutaneous Ablation in Renal Cell Carcinoma Endorsed by the Canadian Association for Interventional Radiology and the Society of Interventional Oncology

Permalink

<https://escholarship.org/uc/item/9v97600x>

Journal

Journal of Vascular and Interventional Radiology, 31(2)

ISSN

1051-0443

Authors

Morris, Christopher S
Baerlocher, Mark O
Dariushnia, Sean R
[et al.](#)

Publication Date

2020-02-01

DOI

10.1016/j.jvir.2019.11.001

Copyright Information

This work is made available under the terms of a Creative Commons Attribution License, available at <https://creativecommons.org/licenses/by/4.0/>

Peer reviewed



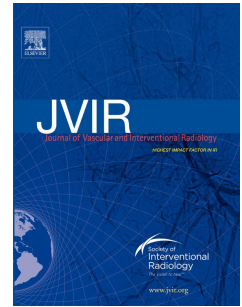
Since January 2020 Elsevier has created a COVID-19 resource centre with free information in English and Mandarin on the novel coronavirus COVID-19. The COVID-19 resource centre is hosted on Elsevier Connect, the company's public news and information website.

Elsevier hereby grants permission to make all its COVID-19-related research that is available on the COVID-19 resource centre - including this research content - immediately available in PubMed Central and other publicly funded repositories, such as the WHO COVID database with rights for unrestricted research re-use and analyses in any form or by any means with acknowledgement of the original source. These permissions are granted for free by Elsevier for as long as the COVID-19 resource centre remains active.

Journal Pre-proof

Diagnosis of Asymptomatic COVID-19 Infection in a Patient Referred for CT Lung Biopsy

Michael F. Morris, MD, Christopher Goettel, MD, Cole Mendenhall, MD, Steve Chen, MD, Kevin Hirsch, MD



PII: S1051-0443(20)30342-0

DOI: <https://doi.org/10.1016/j.jvir.2020.04.002>

Reference: JVIR 5590

To appear in: *Journal of Vascular and Interventional Radiology*

Received Date: 31 March 2020

Accepted Date: 1 April 2020

Please cite this article as: Morris MF, Goettel C, Mendenhall C, Chen S, Hirsch K, Diagnosis of Asymptomatic COVID-19 Infection in a Patient Referred for CT Lung Biopsy, *Journal of Vascular and Interventional Radiology* (2020), doi: <https://doi.org/10.1016/j.jvir.2020.04.002>.

This is a PDF file of an article that has undergone enhancements after acceptance, such as the addition of a cover page and metadata, and formatting for readability, but it is not yet the definitive version of record. This version will undergo additional copyediting, typesetting and review before it is published in its final form, but we are providing this version to give early visibility of the article. Please note that, during the production process, errors may be discovered which could affect the content, and all legal disclaimers that apply to the journal pertain.

© 2020 Published by Elsevier, Inc., on behalf of SIR.

Title: Diagnosis of Asymptomatic COVID-19 Infection in a Patient Referred for CT Lung Biopsy

Authors: Michael F. Morris MD^{1,2}, Christopher Goettel MD^{1,2}, Cole Mendenhall MD^{1,2}, Steve Chen MD^{1,2}, Kevin Hirsch MD^{1,2}

¹Department of Radiology, Banner University Medical Center – Phoenix

²University of Arizona College of Medicine – Phoenix

Corresponding Author:

Michael F. Morris MD

1111 E. McDowell Rd

Phoenix AZ 85006

Telephone: 602-839-4850

Fax: 602-839-7661

Email: Michael.morris@bannerhealth.com

Disclosures: The authors have no conflicts of interest or financial disclosures to declare.

As the prevalence of COVID-19 infection continues to rise, there is increased risk of disease transmission to healthcare workers performing procedures where the virus may aerosolize, such as computed tomography (CT) guided transthoracic lung biopsy. We report a case of an asymptomatic patient who was diagnosed with COVID-19 infection based on imaging findings at the time of CT guided transthoracic lung biopsy. IRB approval was not required for this case report.

A 61 year-old asymptomatic male with prior tonsillar cancer was referred for computed tomography (CT) guided transthoracic lung biopsy of a suspicious nodule identified on chest CT one month prior (Figure 1). Pre-biopsy laboratory testing demonstrated a mildly decreased white blood cell count of 3.1k/mm² (normal 4-11), with otherwise normal laboratory values.

Pre-procedural CT in the prone position re-demonstrated the suspicious left lower lobe nodule, as well as multiple new ground-glass and nodular opacities in the periphery of both lungs (Figure 2). The imaging findings raised concern for possible asymptomatic COVID-19 infection, and the lung biopsy was postponed. The patient was subsequently referred for polymerase chain reaction (PCR) testing, which confirmed COVID-19 infection.

Up to 50% of patients infected with COVID-19 are either asymptomatic or capable of pre-symptomatic disease transmission (1). A recent study of PCR proven COVID-19 patients found that 54% of the asymptomatic cohort had lung opacities present on CT (2). The most commonly reported chest CT findings of COVID-19 infection include peripheral predominant ground glass opacities and consolidations, sometimes with a rounded morphology (3).

Although COVID-19 infection is transmitted primary through direct contact or respiratory droplets, patients with a cough can aerosolize the virus. Because many of the complications from CT-guided transthoracic lung biopsy are likely to induce coughing (4), there is increased risk of disease transmission to healthcare workers who may be using only standard universal precautions during the procedure.

With widespread community transmission of COVID-19 in many parts of the United States, interventional radiologists performing CT-guided transthoracic procedures should carefully review pre-procedural imaging for findings associated with COVID-19 infection, including in asymptomatic patients. Depending on the clinical setting, it may be prudent to either defer the interventional procedure and obtain COVID-19 testing or use more stringent airborne precautions to avoid accidental exposure to the COVID-19 virus.

References:

1. Mizumoto K, Kagaya K, Zarebski A, Chowell G. Estimating the asymptomatic proportion of coronavirus disease 2019 (COVID-19) cases on board the Diamond Princess cruise ship, Yokohama, Japan, 2020. *Eurosurveillance*. 2020;25(10):1–5.
2. Inui S, Fujikawa A, Jitsu M, Kunishima N, Watanabe S, Suzuki Y, et al. Chest CT Findings in Cases from the Cruise Ship “Diamond Princess” with Coronavirus Disease 2019 (COVID-19). *Radiol Cardiothorac Imaging*. 2020 2(2). doi.org/10.1148/ryct.2020200110

3. Chung M, Bernheim A, Mei X, Zhang N, Huang M, Zeng X, et al. CT Imaging Features of 2019 Novel Coronavirus (2019-nCoV). *Radiology*. 2020 Apr 4;295(1):202–7.
4. Heerink WJ, de Bock GH, de Jonge GJ, Groen HJM, Vliegenthart R, Oudkerk M. Complication rates of CT-guided transthoracic lung biopsy: meta-analysis. *Eur Radiol*. 2017;27(1):138–48.

Figure 1.

Non-contrast chest CT one month prior to transthoracic lung biopsy demonstrating a suspicious 1.1x1.5cm left lower lobe nodule. No other lung abnormalities were present.

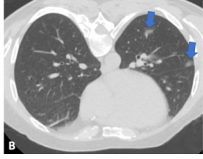
Figure 2. Pre-procedural CT in the prone position prior to CT guided transthoracic lung biopsy, from cranial to caudal (A-C). There are multiple new ground glass opacities in the lung periphery, some with a rounded morphology (blue arrows). Suspicious left lower lobe nodule persists (white arrow).



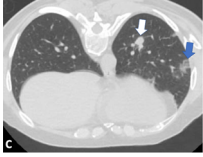
Journal Pre-proof



Journal Pre-proof



Journal Pre-proof



Journal Pre-proof