

# UC Irvine

## UC Irvine Previously Published Works

### Title

A Nongenomic Mechanism for Progesterone-mediated Immunosuppression: Inhibition of K<sup>+</sup> Channels, Ca<sup>2+</sup> Signaling, and Gene Expression in T Lymphocytes

### Permalink

<https://escholarship.org/uc/item/9vp6q27p>

### Journal

Journal of Experimental Medicine, 188(9)

### ISSN

0022-1007

### Authors

Ehring, George R  
Kerschbaum, Hubert H  
Eder, Claudia  
[et al.](#)

### Publication Date

1998-11-02

### DOI

10.1084/jem.188.9.1593

### Copyright Information

This work is made available under the terms of a Creative Commons Attribution License, available at <https://creativecommons.org/licenses/by/4.0/>

Peer reviewed

# A Nongenomic Mechanism for Progesterone-mediated Immunosuppression: Inhibition of $K^+$ Channels, $Ca^{2+}$ Signaling, and Gene Expression in T Lymphocytes

By George R. Ehring, Hubert H. Kerschbaum, Claudia Eder, Amber L. Neben, Christopher M. Fanger, Rosana M. Khoury, Paul A. Negulescu, and Michael D. Cahalan

*From the Department of Physiology and Biophysics, University of California, Irvine, California 92697*

## Summary

The mechanism by which progesterone causes localized suppression of the immune response during pregnancy has remained elusive. Using human T lymphocytes and T cell lines, we show that progesterone, at concentrations found in the placenta, rapidly and reversibly blocks voltage-gated and calcium-activated  $K^+$  channels ( $K_V$  and  $K_{Ca}$ , respectively), resulting in depolarization of the membrane potential. As a result,  $Ca^{2+}$  signaling and nuclear factor of activated T cells (NF-AT)-driven gene expression are inhibited. Progesterone acts distally to the initial steps of T cell receptor (TCR)-mediated signal transduction, since it blocks sustained  $Ca^{2+}$  signals after thapsigargin stimulation, as well as oscillatory  $Ca^{2+}$  signals, but not the  $Ca^{2+}$  transient after TCR stimulation.  $K^+$  channel blockade by progesterone is specific; other steroid hormones had little or no effect, although the progesterone antagonist RU 486 also blocked  $K_V$  and  $K_{Ca}$  channels. Progesterone effectively blocked a broad spectrum of  $K^+$  channels, reducing both Kv1.3 and charybdotoxin-resistant components of  $K_V$  current and  $K_{Ca}$  current in T cells, as well as blocking several cloned  $K_V$  channels expressed in cell lines. Progesterone had little or no effect on a cloned voltage-gated  $Na^+$  channel, an inward rectifier  $K^+$  channel, or on lymphocyte  $Ca^{2+}$  and  $Cl^-$  channels. We propose that direct inhibition of  $K^+$  channels in T cells by progesterone contributes to progesterone-induced immunosuppression.

Key words: T lymphocyte •  $K^+$  channel • calcium signaling • gene expression • nuclear factor of activated T cells

Immunosuppression within the uterus is crucial for the survival of the fetus (1, 2). Although the maternal immune system becomes sensitized to paternal antigens during pregnancy, fetal cells and placental trophoblasts bearing those antigens do not elicit a cytolytic immune response (3–5). High concentrations of progesterone in the placenta inhibit the maternal immune response against the fetal allograft (6, 7). The immunosuppressive effects of progesterone were demonstrated in vivo by prolonged survival of xenografts near silastic implants containing progesterone at concentrations typically found in the placenta (3, 6). In vitro assays have established that progesterone inhibits lymphocyte activation and proliferation in response to allogeneic cells or mitogens (8–10). In contrast, progesterone does not inhibit the effector functions of previously activated cytolytic T cells (11). These data suggest that progesterone may interfere with the early phases of T cell activation.

Antigen presentation and TCR ligation stimulate tyrosine kinases, leading to the generation of inositol 1,4,5-trisphosphate ( $IP_3$ )<sup>1</sup> and a consequent rise in the cytoplasmic calcium concentration ( $[Ca^{2+}]_i$ ). Elevated  $[Ca^{2+}]_i$  activates calcineurin, a phosphatase which then dephosphorylates a cytoplasmic transcription factor, the nuclear factor of activated T cells (NF-AT). Dephosphorylated NF-AT moves into the nucleus where it promotes the expression of the IL-2 gene (12). A sustained elevation in  $[Ca^{2+}]_i$  requiring  $Ca^{2+}$  influx across the plasma membrane is necessary for the retention of NF-AT in the nucleus and efficient transcription of IL-2 (13–16). In lymphocytes, the opening of  $Ca^{2+}$  release-activated  $Ca^{2+}$  (CRAC) channels initiates  $Ca^{2+}$  influx after the depletion of  $Ca^{2+}$  stores by

<sup>1</sup>Abbreviations used in this paper:  $[Ca^{2+}]_i$ , intracellular free calcium concentration; CRAC,  $Ca^{2+}$  release-activated  $Ca^{2+}$ ; CTX, charybdotoxin;  $E_m$ , membrane potential;  $IP_3$ , inositol 1,4,5-trisphosphate;  $K_{Ca}$ ,  $Ca^{2+}$ -activated  $K^+$ ;  $K_V$ , voltage-gated  $K^+$ ; NF-AT, nuclear factor of activated T cells; TG, thapsigargin.

G.R. Ehring and H.H. Kerschbaum contributed equally to this work.

IP<sub>3</sub> (17–19). Once the CRAC channels are open, the transmembrane concentration gradient for Ca<sup>2+</sup> and the membrane potential ( $E_m$ ) provide the driving force for Ca<sup>2+</sup> entry.  $E_m$  is set by the interplay between several ion channels in the T cell membrane. By itself, the Ca<sup>2+</sup> current through CRAC channels would diminish the driving force for calcium entry by reducing  $E_m$ . However, currents through voltage-gated K<sup>+</sup> (K<sub>V</sub>) channels and Ca<sup>2+</sup>-activated K<sup>+</sup> (K<sub>Ca</sub>) channels enhance Ca<sup>2+</sup> entry by driving  $E_m$  to a negative voltage. Chloride channels may also play a role in maintaining a negative  $E_m$  during T cell activation (20, 21). The four major types of ion channels found in T cells are possible targets for immunosuppressive agents. In particular, the K<sub>V</sub> channel encoded by Kv1.3 is required for normal lymphocyte activation both in vitro and in vivo (14, 22–25).

We have determined the effects of progesterone on lymphocyte ion channels, Ca<sup>2+</sup> signaling, and gene expression. By combining functional assays of gene expression with patch-clamp and Ca<sup>2+</sup>-imaging measurements, we demonstrate that progesterone blocks lymphocyte K<sup>+</sup> channels, interferes with TCR-induced [Ca<sup>2+</sup>]<sub>i</sub> signaling, and inhibits gene expression. We propose that progesterone acts as an endogenous immunosuppressant by directly and reversibly blocking K<sup>+</sup> channels.

## Materials and Methods

**Chemicals and Solutions.** Salts and other reagents were obtained from Sigma Chemical Co. (St Louis, MO) unless otherwise noted. Thapsigargin (TG) was obtained from Alexis Corp. (San Diego, CA). Progesterone (10 mM) and PMA (3 mM) stocks were prepared in DMSO.

**Cell Culture.** B3Z cells and K897 cells were provided along with the antigenic peptide fragment SIINFEKL by Dr. N. Shastri (University of California, Berkeley, CA). B3Z cells are a murine, CD8<sup>+</sup>, T cell hybridoma with a known antigen specificity for OVA/K<sup>b</sup>-MHC and containing a β-galactosidase reporter gene construct (*lacZ*) under the control of the NF-AT promoter (26). The corresponding antigen-presenting K897 cells had been transfected with K<sup>b</sup> class I MHC as described (27). The human leukemia T cell line Jurkat E6-1 was obtained from the American Type Culture Collection (Rockville, MD). Human peripheral T lymphocytes were collected from venous blood of healthy volunteers and isolated using a Ficoll-Hypaque density gradient as described previously (28). A population of activated T cell blasts was prepared in culture by treating the resting cells with 10 μg/ml PHA (PHA-P; Difco Laboratories, Inc., Detroit, MI). Cell lines expressing the cloned K<sub>V</sub> channels Kv1.1, Kv1.2, Kv1.3, Kv1.4, Kv1.5, and Kv3.1 and a voltage-gated Na<sup>+</sup> channel hSKM1 were maintained in culture. All cells were grown in RPMI 1640 medium containing 10% heat-inactivated fetal bovine serum, 10 mM Hepes, 2 mM glutamine, 1 mM pyruvate, 50 μM 2-ME. Cells were cultured in 25-ml flasks (Costar Corp., Cambridge, MA) at 37°C, 5% CO<sub>2</sub> in a humidified incubator. For experiments on inward rectifier K<sup>+</sup> channels, rat basophilic leukemia (RBL) cells were maintained in Eagle's MEM supplemented with 10% FCS and 1% l-glutamine. RBL cells were plated onto glass coverslips 1–2 d before use.

**LacZ Reporter Gene Assay.** The fraction of B3Z cells expressing β-galactosidase was measured using flow cytometry (FAC-

Scan®; Becton Dickinson, San Jose, CA) as described previously (13). In brief, 5 × 10<sup>4</sup> cells in RPMI without serum were placed in individual wells of 24-well plates activated either by 1 μM TG plus 50 nM PMA or by antibodies to the CD3-ε subunit of the TCR complex. In the latter, wells were coated with 10 μg/ml anti-CD3-ε antibodies (PharMingen, San Diego, CA) overnight and rinsed briefly with PBS before use. Cells were activated in the incubator for a total of 4 h before being resuspended and loaded by osmotic shock with the fluorogenic substrate, fluorescein-di-β-galactopyranoside (FDG; Molecular Probes, Inc., Eugene, OR). The fluorescence of *lacZ*<sup>+</sup> cells was at least fivefold greater than autofluorescence. The effect of progesterone on *lacZ* gene expression was quantified using a MUG (4-methylumbelliferyl β-d-galactopyranoside) assay (29). In brief, B3Z cells were plated at 10<sup>5</sup> cells per well in 96-well plates, and the fluorescence produced by cell lysates in a solution containing 3 mM MUG was measured in a multi-well plate reader (CytoFluor Series 4000; PerSeptive Biosystems, Framingham, MA).

**Patch-clamp Recordings.** Membrane currents were measured using the whole-cell configuration of the patch-clamp technique (28, 30), and membrane potential was measured using the perforated patch method in current-clamp mode with nystatin to permeabilize the cells (31). An EPC-9 amplifier (HEKA, Lambrecht/Pfalz, Germany) interfaced to a Macintosh Quadra 700 computer was used for pulse application and data recording. Membrane voltages were corrected for liquid junction potentials, and current recordings were corrected for leak and capacitive currents. Patch pipettes were pulled from Accu-fill 90 Micropets (Becton Dickinson, Parsippany, NJ) using a P87 micropipette puller (Sutter Instruments Co., Novato, CA). Pipettes were coated with Sylgard (Dow Corning Corp., Midland, MI) and heat polished to final resistances of 2–5 MΩ. Patch-clamp experiments were performed at room temperature (20–25°C). Unless otherwise indicated, the membrane currents were filtered at 1.5 kHz. Data analysis was performed using the program Pulse (HEKA). Mammalian Ringer contained (in mM): 160 NaCl, 4.5 KCl, 2 CaCl<sub>2</sub>, 1 MgCl<sub>2</sub>, 10 Hepes (pH 7.4; osmolality 290–310 mosmol/kg). The ionic composition of the pipette solutions used in the individual experiments is reported in the figure legends.

**[Ca<sup>2+</sup>]<sub>i</sub> Measurement.** [Ca<sup>2+</sup>]<sub>i</sub> was measured ratiometrically using fura-2, as described previously (13). In brief, cells were loaded with 3 μM fura-2/AM (Molecular Probes, Inc.) for 30–40 min at room temperature (20–25°C). The cells were then washed three times with RPMI/10% FCS and stored in the dark. Illumination was provided by a xenon arc-lamp (Carl Zeiss, Jena, Germany) and transmitted through a filter wheel unit (Lambda 10; Axon Instruments, Inc., Foster City, CA) containing 350- and 385-nm excitation filters. The filtered light was reflected by a 400-nm dichroic mirror through a 63× oil-immersion objective to illuminate cells. Emitted light >480 nm was received by a SIT camera (C2400; Hamamatsu Photonics, Bridgewater, NJ) and the video information relayed to an image processing system (Videoprobe; ETM Systems, Petaluma, CA). Full field-of-view 8-bit images, averaged over 16 frames, were collected at 350- and 385-nm wavelengths. Digitally stored 350/385 ratios were constructed from background-corrected 350- and 385-nm images. Single-cell measurements of [Ca<sup>2+</sup>]<sub>i</sub> were calculated from the 350/385 ratios using the equation of Grynkiewicz et al. (32) and a K<sub>d</sub> of 250 nM for fura-2. The minimum 350/385 ratio was measured in single cells after incubation for 10 min in Ca<sup>2+</sup>-free Ringer containing 2 mM EGTA. Maximum ratio values were obtained after perfusion with Ringer containing 10 mM Ca<sup>2+</sup>, 1 μM TG, and 10 μM ionomycin.

**Data Analysis.** Numerical values for single-cell  $[Ca^{2+}]_i$  traces were analyzed with Origin (Microcal Software, Inc., Northampton, MA). Statistical analysis was performed on data sets using Excel version 5.0 (Microsoft Corp., Redmond, WA). Data are reported as mean  $\pm$  SD. Analysis of variance (ANOVA) or Student's *t* test was used to compare mean values. Pairs of means were considered statistically different if  $P < 0.05$ .

## Results

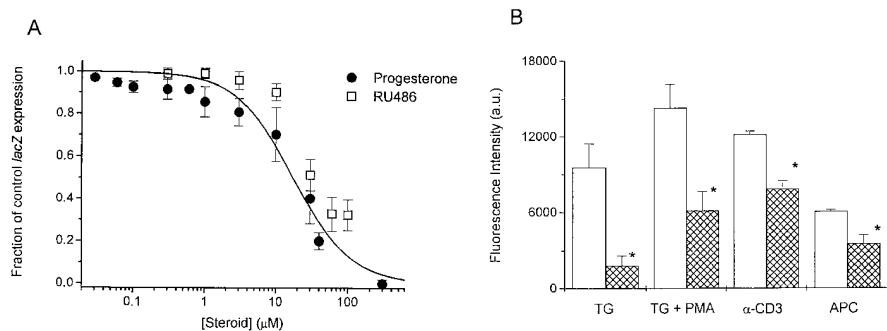
**Progesterone Suppresses Gene Expression Driven by NF-AT.** The murine T cell hybridoma, B3Z, recognizes an octapeptide fragment from ovalbumin (SIINFEKL) and expresses the *lacZ* reporter construct under transcriptional control of the NF-AT response element of the IL-2 promoter (26, 27). Several treatments that increase  $[Ca^{2+}]_i$  lead to NF-AT-driven *lacZ* expression in B3Z cells (13), including TCR engagement or stimulation with TG, a specific inhibitor of the endoplasmic reticulum  $Ca^{2+}$ -ATPase (33). By flow cytometry in the present series of experiments, cross-linking the TCR with anti-CD3- $\epsilon$  antibodies or stimulating with TG plus PMA produced *lacZ* expression in the majority of B3Z cells ( $60 \pm 4\%$ ,  $n = 7$ ; or  $72 \pm 10\%$ ,  $n = 3$ , respectively). Progesterone reduced NF-AT-mediated *lacZ* gene expression in a concentration-dependent manner, with an  $IC_{50}$  value of  $22 \pm 2.1 \mu M$  in cells stimulated by TG/PMA (Fig. 1 A, filled circles). The progesterone antagonist RU 486 also inhibited gene expression with slightly lower potency (Fig. 1 A, open squares). Progesterone reduced *lacZ* expression when B3Z cells were stimulated by TG alone or with PMA, by immobilized anti-CD3- $\epsilon$  antibody, or by antigen presentation (Fig. 1 B). Thus, at concentrations normally obtained in the placenta (34, 35), progesterone inhibits NF-AT-mediated gene expression when driven by four treatments that increase  $[Ca^{2+}]_i$ . Our results with NF-AT-driven *lacZ* re-

porter gene expression are consistent with levels of progesterone or RU 486 shown previously to inhibit activation of human T cells in vitro (8, 9).

**Progesterone Inhibits  $[Ca^{2+}]_i$  Signals in T Cells after TCR Engagement or TG Stimulation.** Upon contact with K897 cells preloaded with SIINFEKL, B3Z cells responded with an initial  $Ca^{2+}$  transient from a resting  $[Ca^{2+}]_i$  of  $180 \pm 86$  nM to a peak of  $2.5 \pm 0.5 \mu M$  ( $n = 20$ ), followed by sustained  $Ca^{2+}$  oscillations (Fig. 2 A). In the absence of preloaded antigen, K897 cells did not elicit  $Ca^{2+}$  signaling in B3Z cells (data not shown). Application of  $50 \mu M$  progesterone reversibly suppressed antigen-induced  $Ca^{2+}$  oscillations (Fig. 2 A).

To determine if progesterone directly inhibits TCR-initiated signaling or interferes with costimulatory pathways, we activated the TCR complex by cross-linking CD3. Settling B3Z cells onto chambers coated with anti-CD3- $\epsilon$  antibodies elicited an initial  $Ca^{2+}$  transient followed by vigorous  $Ca^{2+}$  oscillations that continued for at least 40 min (Fig. 2 B). In the presence of  $50 \mu M$  progesterone, most cells produced only the initial  $Ca^{2+}$  transient lasting  $271 \pm 178$  s, or a transient followed by severely attenuated oscillations ( $n = 14$ ; Fig. 2 C). These data demonstrate that progesterone blocks  $Ca^{2+}$  signaling after TCR engagement. Since the initial  $Ca^{2+}$  transient results from  $IP_3$ -mediated release of  $Ca^{2+}$  from intracellular stores, and the sustained  $Ca^{2+}$  signal requires  $Ca^{2+}$  influx, these data also suggest that progesterone inhibits  $Ca^{2+}$  influx but not the steps that lead to  $Ca^{2+}$  release from intracellular stores.

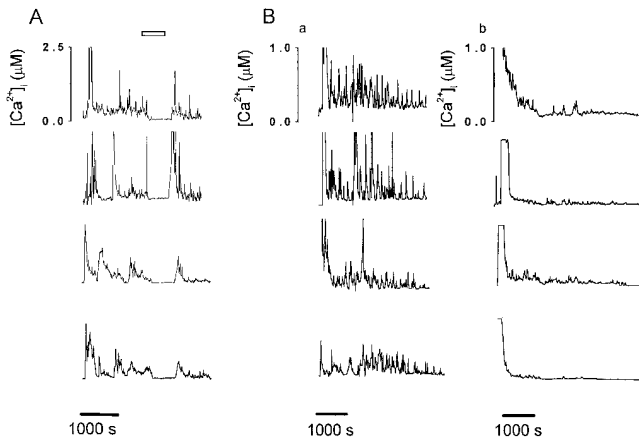
TG inhibits the  $Ca^{2+}$  reuptake pump, leading to depletion of the intracellular  $Ca^{2+}$  stores and  $Ca^{2+}$  influx while bypassing the initial steps of TCR signaling and  $IP_3$  generation (36, 37). In resting human T cells, the addition of TG to the bathing solution increased  $[Ca^{2+}]_i$  from  $72 \pm 8$  nM to a stable plateau level of  $1.2 \pm 0.1 \mu M$  ( $n = 76$ ; Fig. 3 A). Progesterone reversibly inhibited the sustained  $Ca^{2+}$  signal with an  $IC_{50}$  value of  $28 \pm 2.7 \mu M$  (Fig. 3, A and



**Figure 1.** Progesterone inhibits NF-AT-mediated gene expression in B3Z cells. (A) The concentration-dependent inhibition of *lacZ* expression in B3Z cells by progesterone (●) or RU 486 (□) was measured in a multiwell fluorescence plate reader using MUG as a substrate for  $\beta$ -galactosidase. The cells were stimulated for 4 h with  $1 \mu M$  TG plus  $50$  nM PMA. For each experiment, triplicate samples were corrected for background fluorescence and normalized for control *lacZ* expression. Data are presented as mean  $\pm$  SD ( $n = 10$ ), and were fitted to a Hill equation of the form

$$y = \frac{y_{\max}}{1 + \left(\frac{[X]}{IC_{50}}\right)^n},$$

where  $y$  = the fraction of control *lacZ* expression with a maximum level represented by  $y_{\max}$ ,  $[X]$  = the concentration of progesterone,  $IC_{50}$  = the dissociation constant, and  $n$  = the Hill coefficient. The curve represents a Hill equation with an  $IC_{50}$  value of  $22 \pm 2.1 \mu M$  and  $n = 1.7 \pm 0.3$ . The effects of progesterone were not due to nonspecific toxicity, since after treatment with  $30 \mu M$  progesterone,  $>95\%$  of the cells stained with vital stain acetoxy-methoxy calcein and  $<5\%$  stained with propidium iodide, a dye that is excluded from live cells. (B) Application of  $30 \mu M$  progesterone reduced *lacZ* expression when B3Z cells were stimulated for 4 h by  $1 \mu M$  TG alone, a combination of  $1 \mu M$  TG plus  $50$  nM PMA (TG + PMA), immobilized anti-CD3- $\epsilon$  antibodies, or K897 cells presenting SIINFEKL. Fluorescence readouts from the multiwell plate reader in arbitrary units (a.u.) are presented as mean  $\pm$  SD (white bars, stimulation alone; hatched bars, stimulation plus  $30 \mu M$  progesterone). \*Significance was determined with one-tail *t* tests ( $P < 0.0001$ ).



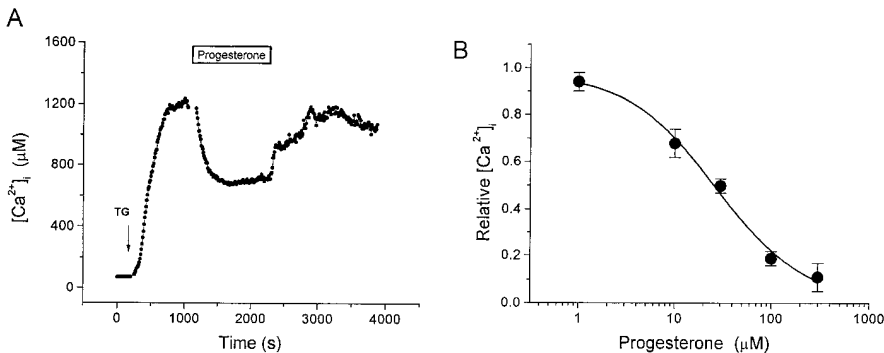
**Figure 2.** Progesterone inhibits  $[Ca^{2+}]_i$  oscillations induced by TCR ligation. (A)  $[Ca^{2+}]_i$  responses from four representative B3Z cells activated by contact with SIINFEKL-presenting K897 cells illustrate that  $[Ca^{2+}]_i$  oscillations were reversibly inhibited by the application of 50  $\mu$ M progesterone to the bath (bar). (B)  $[Ca^{2+}]_i$  oscillations in four B3Z cells activated by settling onto coverslips coated with anti-CD3- $\epsilon$  antibodies in the absence (a) or presence (b) of 50  $\mu$ M progesterone.

B). Thus, progesterone blocks  $Ca^{2+}$  influx subsequent to emptying of the  $Ca^{2+}$  stores.

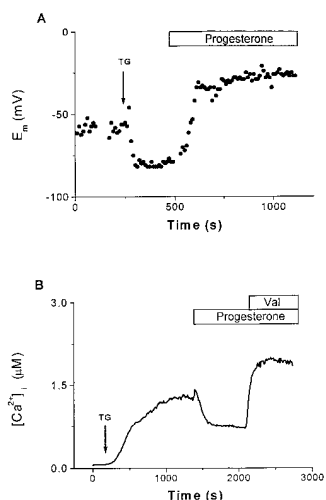
**Progesterone Depolarizes the Membrane Potential, Reducing the Driving Force for  $Ca^{2+}$  Entry.**  $Ca^{2+}$  influx depends upon the opening of CRAC channels and upon an electrochemical gradient for  $Ca^{2+}$  entry across the cell membrane. The negative membrane potential supported by  $K^+$  channels provides the electrical component of the driving force favoring  $Ca^{2+}$  entry; membrane depolarization would reduce this driving force. By direct measurement during perforated-patch current-clamp recording, we found that progesterone depolarizes the membrane potential,  $E_m$ .  $K_V$  channels normally maintain the resting membrane potential of T lymphocytes near  $-60$  mV (38). Fig. 4 A illustrates that membrane hyperpolarization accompanies TG stimulation (from  $-61 \pm 1.2$  mV,  $n = 3$ ; to  $-78 \pm 2.0$  mV,  $n = 11$ ). The hyperpolarization that follows TG stimulation is produced by activation of  $K_{Ca}$  channels during the rise in

$[Ca^{2+}]_i$ , driving  $E_m$  towards the  $K^+$  equilibrium potential of  $\sim -80$  mV. Progesterone (50  $\mu$ M; application bar, Fig. 4 A) not only reversed the hyperpolarization, but also resulted in depolarization to an average of  $-41 \pm 4.3$  mV ( $n = 13$ ,  $P < 0.0001$ ). These results suggest that progesterone may block both  $K_V$  and  $K_{Ca}$  channels. If the reduction of  $[Ca^{2+}]_i$  by progesterone is secondary to decreased  $K^+$  current, then restoration of a  $K^+$  flux across the cell membrane should reverse this effect of progesterone. We tested this hypothesis by using the  $K^+$  ionophore, valinomycin, to hyperpolarize  $E_m$ . In the experiment shown in Fig. 4 B, 30  $\mu$ M progesterone reduced the plateau in  $[Ca^{2+}]_i$  that followed TG stimulation. The subsequent addition of valinomycin in the continued presence of progesterone resulted in an increase of  $[Ca^{2+}]_i$ . Thus,  $Ca^{2+}$ -imaging and current-clamp experiments demonstrate that progesterone reduces the driving force for  $Ca^{2+}$  entry, an effect that can be reversed by reestablishing  $K^+$  efflux. These data suggest that progesterone may affect  $[Ca^{2+}]_i$  and gene expression by blocking  $K^+$  channels.

**Progesterone Blocks Voltage-gated  $K^+$  and  $Ca^{2+}$ -activated  $K^+$  Channels in T Cells.** Whole-cell recording with the patch-clamp technique permits direct measurement of several types of channel activity in T cells. A voltage step from a holding potential of  $-80$  to  $+30$  mV elicits rapidly activating  $K_V$  currents, which reach a peak and then slowly inactivate.  $K_V$  currents consist of two components, a predominant fraction encoded by homotetramers of the *Shaker*-related Kv1.3 gene and a much smaller fraction of unknown molecular identity (for a review, see reference 24). The two components can be readily distinguished by their biophysical and pharmacological properties. Kv1.3 channels are blocked by nanomolar concentrations of a scorpion toxin, charybdotoxin (CTX), and undergo cumulative (use-dependent) C-type inactivation during repetitive depolarization. The smaller, CTX-resistant current does not exhibit use-dependent inactivation. Application of progesterone rapidly and reversibly reduces  $K_V$  currents in human or B3Z T cells, with an  $IC_{50}$  of  $29 \pm 2$   $\mu$ M for the peak  $K^+$  current (Fig. 5). Progesterone accelerates the decline of  $K^+$  current during a depolarizing pulse, and thus the block



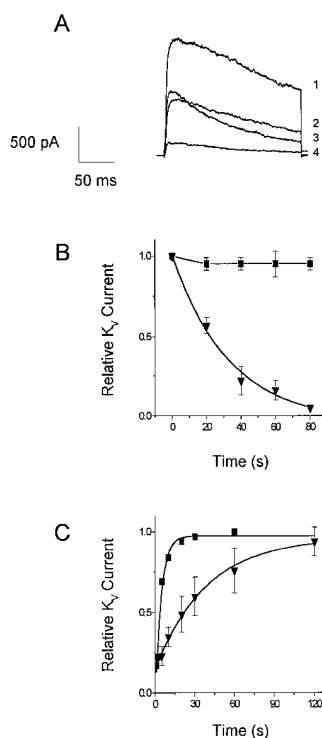
**Figure 3.** Progesterone reduces the  $[Ca^{2+}]_i$  plateau evoked by TG stimulation in human T cells. (A) Average  $[Ca^{2+}]_i$  is plotted against time ( $n = 76$ ) before and during stimulation with 1  $\mu$ M TG (arrow). TG stimulated  $Ca^{2+}$  influx, resulting in a stable rise in  $[Ca^{2+}]_i$ . Addition of 30  $\mu$ M progesterone (bar) reversibly reduced the  $[Ca^{2+}]_i$  plateau obtained after TG stimulation. (B) The concentration dependence of the reduction of  $[Ca^{2+}]_i$  by progesterone is plotted for TG-stimulated cells. Calcium levels were normalized by subtracting the resting  $[Ca^{2+}]_i$  and dividing  $[Ca^{2+}]_i$  in the presence of progesterone and TG by  $[Ca^{2+}]_i$  in the presence of TG alone. Data are presented as mean  $\pm$  SD and were fitted to a Hill equation illustrated by the smooth curve ( $IC_{50} = 28 \pm 2.7$   $\mu$ M and  $n = 1.3 \pm 0.2$ ).



**Figure 4.** Progesterone reduces the driving force for  $\text{Ca}^{2+}$  influx. (A) Current-clamp recordings using the perforated-patch technique were performed in B3Z cells to determine the effects of progesterone on  $E_m$ . This panel presents a representative single-cell recording. The addition of  $1 \mu\text{M}$  TG (arrow) hyperpolarized the cell from the resting potential ( $-60 \text{ mV}$ ) to near the  $\text{K}^+$  equilibrium potential ( $\sim -80 \text{ mV}$ ), enhancing the driving force for  $\text{Ca}^{2+}$  influx. Subsequent application of  $50 \mu\text{M}$  progesterone depolarized the cell to  $-26 \text{ mV}$ , resulting in a reduction of the driving force for  $\text{Ca}^{2+}$  influx. For perforated-patch recordings, the tips of the

pipettes were filled with the following solution (in mM):  $120 \text{ K}_2\text{SO}_4$ ,  $16 \text{ KCl}$ ,  $5 \text{ MgSO}_4$ ,  $10 \text{ Hepes}$  (pH 7.2). A stock solution of nystatin in DMSO ( $25 \mu\text{g/ml}$ ) was prepared daily and subsequently diluted in the pipette solution to a final concentration of  $100 \mu\text{g/ml}$ . After sonication, this solution was used for backfilling the pipettes as described previously (reference 31). (B) Measurements of average  $[\text{Ca}^{2+}]_i$  from B3Z cells ( $n = 37$ ). After the addition of  $1 \mu\text{M}$  TG (arrow),  $[\text{Ca}^{2+}]_i$  rose from a resting level of  $70 \pm 30 \text{ nM}$  to a plateau of  $1.3 \pm 0.4 \mu\text{M}$ . Progesterone ( $30 \mu\text{M}$ ) reduced the  $[\text{Ca}^{2+}]_i$  to approximately half of plateau concentration, an effect that was completely reversed by the addition of  $2 \mu\text{M}$  valinomycin. Application bars. The additions of progesterone and valinomycin to the bath.

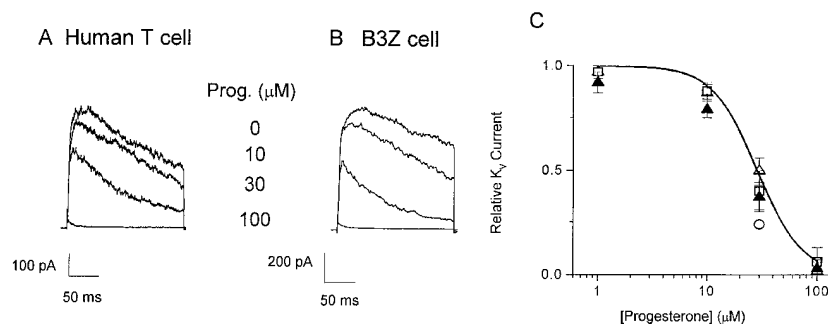
is more potent when evaluated at the end of a 200-ms pulse (Fig. 5 C, filled triangles). The apparent increased rate of channel inactivation (Fig. 5, A and B) suggests that progesterone may preferentially bind to and block the open or inactivated  $\text{Kv}1.3$  channel. To determine if steady-state inactivation enhances the block by progesterone, we inactivated a significant fraction of  $\text{Kv}1.3$  channels by decreasing the holding potential from  $-80$  to  $-50 \text{ mV}$ . As shown in Fig. 6 A, progesterone ( $30 \mu\text{M}$ ) reduced the peak  $\text{Kv}1.3$  currents more potently when the holding potential was  $-50 \text{ mV}$  (70% block; see open circle in Fig. 5 C) than when the holding potential was  $-80 \text{ mV}$  (45% block), demonstrating that channel inactivation effectively enhances the block of  $\text{Kv}1.3$  currents by progesterone. During antigen-induced oscillations of  $[\text{Ca}^{2+}]_i$ ,  $\text{Kv}1.3$  channels would un-



**Figure 6.** Inactivation enhances  $\text{Kv}$  block by progesterone. (A)  $\text{Kv}$  currents were elicited by steps to  $+30 \text{ mV}$  from holding potential of  $-80 \text{ mV}$  (1, 3) or  $-50 \text{ mV}$  (2, 4) in the absence (1, 2) or presence (3, 4) of  $30 \mu\text{M}$  progesterone. Solutions used are as in Fig. 5. (B) Use-dependent block of voltage-gated  $\text{K}^+$  currents. Current responses were elicited by repetitive voltage pulses from  $-80$  to  $+30 \text{ mV}$  separated by  $20 \text{ s}$ . Normalized peak current amplitudes in the absence (■) or presence (▼) of  $67 \mu\text{M}$  progesterone were plotted against time. (C) Time course of recovery from inactivation in a B3Z cell before and during application of  $60 \mu\text{M}$  progesterone. Pairs of 200-ms pulses to  $+30 \text{ mV}$  were applied from a holding potential of  $-80 \text{ mV}$ . The graph shows the ratio of peak current during the second pulse to the peak current during the first pulse, plotted as a function of the time interval between the pulses. Data were fitted by single exponentials with time constants of  $4 \text{ s}$  for control (■) and  $39 \text{ s}$  for progesterone (▼).

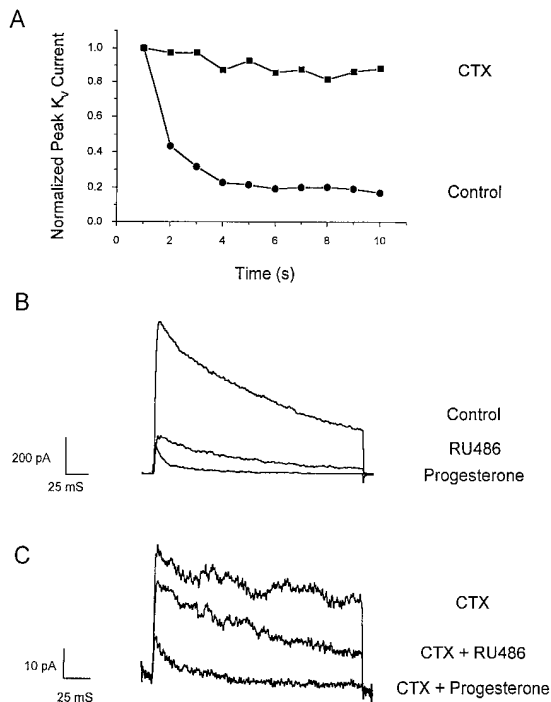
dergo repetitive cycles of activation, inactivation, and recovery as the membrane potential fluctuates. Activation cycles can result in frequency or use-dependent inhibition if the interval between depolarizations is less than the time required for full recovery from inactivation; normally, pulse intervals of  $>20 \text{ s}$  allow full recovery. In the presence of progesterone,  $\text{Kv}1.3$  currents steadily declined during repetitive pulsing, because channel inactivation recovers 10-fold more slowly, resulting in accumulation of channels in the inactivated state (Fig. 6, B and C).

We also examined the effects of progesterone on the smaller component of  $\text{Kv}$  current by selectively blocking the  $\text{Kv}1.3$  component with  $100 \text{ nM}$  CTX. At this dose, we expect a residual  $\text{Kv}1.3$  current of only 2% that in the ab-



**Figure 5.** Progesterone blocks  $\text{Kv}$  channels. Whole-cell currents were measured in human T cells (A) and B3Z cells (B) during 200-ms voltage pulses from a holding potential of  $-80 \text{ mV}$  to  $+30 \text{ mV}$  applied every  $30 \text{ s}$ . The pipette solution contained (in mM):  $160 \text{ K}^+$  aspartate,  $2 \text{ MgCl}_2$ ,  $1 \text{ CaCl}_2$ ,  $10 \text{ EGTA}$ ,  $10 \text{ Hepes}$  (pH 7.2). Currents are shown before and during bath application of  $10$ ,  $30$ , or  $100 \mu\text{M}$  progesterone. (C) Concentration dependence for the reduction of  $\text{Kv}$  currents by progesterone. Peak current amplitudes in human T cells ( $\Delta$ ) and B3Z cells ( $\square$ ) were analyzed and plotted against progesterone concentration. Data points for B3Z and human T cells overlaid each other at most concentrations. For human

T cells, the current at the end of the 200-ms pulse ( $\blacktriangle$ ) was also plotted. To determine the effect of depolarization on progesterone block,  $E_m$  was held at  $-50 \text{ mV}$  ( $\circ$ ). Data were normalized to control currents measured in the absence of progesterone and presented as mean  $\pm$  SD. The line represents a fit using a Hill equation with an  $\text{IC}_{50}$  of  $29 \pm 2 \mu\text{M}$  and  $n = 2.1 \pm 0.4$ .



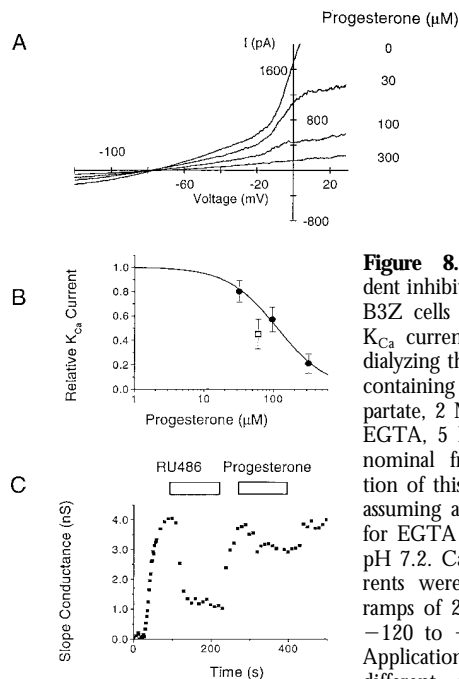
**Figure 7.** Progesterone blocks CTX-resistant  $K_V$  channels. Pipette solution as in Fig. 5. (A) Current responses of the total  $K_V$  current (●) and the CTX-resistant current (■) to repetitive voltage pulses from  $-80$  to  $+30$  mV separated by 1 s. At this rate of pulsing,  $K_{V1.3}$  channels undergo cumulative inactivation, as shown by normalized peak current amplitudes in the absence of CTX (■). With 100 nM CTX present (●), the remaining current does not decline during repetitive pulsing. (B) Progesterone or RU 486 (50  $\mu$ M) blocks the  $K_V$  component. (C) Progesterone blocks the CTX-resistant component of  $K_V$  current more than RU 486. 100 nM CTX was preapplied in Ringer in order to block  $K_{V1.3}$  channels.

sence of CTX. However, in 11 cells examined in this series of experiments and in previous work (21), 5–20% of the  $K_V$  current remains in the presence of CTX. This residual CTX-resistant current does not undergo use-dependent inactivation during repetitive depolarizing pulses (Fig. 7 A). Fig. 7 B demonstrates that the larger, use-dependent, CTX-sensitive component of  $K_V$  current is blocked either by progesterone or by RU 486. As shown in Fig. 7 C, most of the CTX-resistant current is also blocked by 50  $\mu$ M progesterone, whereas RU 486 at the same concentration is less effective. We conclude that progesterone blocks both the predominant  $K_{V1.3}$  component and the CTX-resistant component of  $K_V$  current in T cells, and that RU 486 blocks primarily the  $K_{V1.3}$  component.

$K_{Ca}$  channels hyperpolarize the membrane potential of T cells during the  $[Ca^{2+}]_i$  signal, effectively counteracting the depolarizing effects of  $Ca^{2+}$  influx.  $K_{Ca}$  channels are voltage-independent and highly sensitive to a rise in  $[Ca^{2+}]_i$ , with half-activation at  $\sim 400$  nM and a steep  $[Ca^{2+}]_i$  dependence, suggesting that at least four  $Ca^{2+}$  ions must bind to open the channel (for a review, see reference 24). Based upon biophysical characterization and its expression in T cells, it is likely that the  $K_{Ca}$  channel in T cells is encoded by the gene  $hKCa4$  (39). Intracellular dialysis of B3Z or ac-

tivated human T cells with solutions containing 1  $\mu$ M  $Ca^{2+}$  activated a large  $K^+$  current that was evident in voltage ramps (Fig. 8 A). Progesterone blocked  $K_{Ca}$  channels with an  $IC_{50}$  value of  $113 \pm 9$   $\mu$ M (Fig. 8 B). Thus, progesterone blocks the  $K_V$  currents more potently than the  $K_{Ca}$  currents in T cells. In contrast, the progesterone antagonist RU 486 was consistently more potent than progesterone in blocking  $K_{Ca}$  current (Fig. 8 C). These experiments demonstrate some degree of selectivity of the two components of  $K_V$  current and the  $K_{Ca}$  current for progesterone and RU 486.

**Selectivity of Progesterone for  $K_V$  Channels: Progesterone Does Not Block CRAC or Chloride Channels in T Cells.** The results from patch-clamp experiments suggested that progesterone, RU 486, and perhaps other steroid hormones might block several  $K^+$  channel types, albeit with rather low affinity. Therefore, we screened a panel of steroids on the  $K_V$  and  $K_{Ca}$  channels in T lymphocytes. Most of the compounds tested either had no effect or were less effective than progesterone in blocking  $K_V$  or  $K_{Ca}$  currents (Table 1). In addition, we screened several channel types, including both cloned and native channels expressed in a variety of cell lines, for block by progesterone, as summarized in Table 2. Progesterone blocks several  $Kv1$  family members,



**Figure 8.** Concentration-dependent inhibition of  $K_{Ca}$  current in B3Z cells by progesterone. (A)  $K_{Ca}$  currents were activated by dialyzing the cell with a solution containing (in mM) 140  $K^+$  aspartate, 2  $MgCl_2$ , 7.8  $CaCl_2$ , 10 EGTA, 5 HEPES (pH 7.2). The nominal free  $Ca^{2+}$  concentration of this solution was 1  $\mu$ M, assuming a dissociation constant for EGTA and  $Ca^{2+}$  of  $10^{-7}$  at pH 7.2.  $Ca^{2+}$ -activated  $K^+$  currents were evoked by voltage ramps of 200-ms duration from  $-120$  to  $+50$  mV every 30 s. Application of progesterone at different concentrations (indicated at the right of each trace) inhibited the  $K_{Ca}$  current. (B) Concentration-response curve for progesterone block of  $K_{Ca}$  currents (●). The slope conductance between  $-100$  and  $-60$  mV was used as a measure of the  $K_{Ca}$  conductance to avoid contamination by  $K_V$  currents. Data were normalized to the conductance measured in the absence of progesterone and presented as mean  $\pm$  SD. The line represents the fit to a Hill equation with  $IC_{50} = 113$   $\mu$ M and  $n = 1.2$ . Block of  $K_{Ca}$  channels by 60  $\mu$ M RU 486 (□) is shown for comparison. (C) Comparison of progesterone and RU 486. Slope conductance values at  $-80$  mV illustrate activation and block of the  $K_{Ca}$  current by RU 486 and progesterone, each applied at 60  $\mu$ M.

**Table 1.** Percent Inhibition of  $K_V$  and  $K_{Ca}$  Channels by Steroids (60  $\mu$ M)

	Progesterone	RU 486	Estradiol	Testosterone	Cortisol	DHEA	OHP	Aldosterone
$K_V$	77 $\pm$ 8	61 $\pm$ 15	24 $\pm$ 7	17 $\pm$ 12	13 $\pm$ 4	10 $\pm$ 6	12 $\pm$ 6	12 $\pm$ 13
$K_{Ca}$	34 $\pm$ 11	55 $\pm$ 12	8 $\pm$ 10	4 $\pm$ 7	0.0 $\pm$ 0.1	0.4 $\pm$ 0.7	2 $\pm$ 4	6 $\pm$ 7

Currents through  $K_V$  channels in human T cells were evoked by depolarizing pulses to +30 mV, as in Fig. 5.  $K_{Ca}$  channels in activated human T cells were opened by 1  $\mu$ M  $[Ca^{2+}]_i$ , with currents measured during voltage-ramp stimuli as in Fig. 8. Data are presented as mean  $\pm$  SD, with at least three separate experiments for each compound tested at 60  $\mu$ M, and represent the percent inhibition of peak  $K_V$  currents or slope conductances of  $K_{Ca}$  currents near -80 mV. DHEA, Dehydroepiandrosterone; OHP, 17 $\alpha$ -hydroxy-4-pregnene-3,20-dione.

including Kv1.3 expressed in lymphocytes as the predominant  $K_V$  current, as well as Kv3.1 expressed in the brain and in certain subsets of mouse thymocytes. In contrast, progesterone had very little effect on a cloned voltage-gated  $Na^+$  channel found in skeletal muscle, or on a strongly inward rectifying  $K^+$  channel found in RBL cells. We conclude that progesterone is a broad spectrum, low-affinity  $K^+$  channel blocker.

In further experiments on Jurkat T lymphocytes, we evaluated effects of progesterone on CRAC and  $Cl^-$  channels to determine if modulation of these channel types might contribute to the inhibition of  $Ca^{2+}$  signaling. During whole-cell patch-clamp recordings, intracellular dialysis with heavily buffered low- $Ca^{2+}$  solutions passively depleted the intracellular  $Ca^{2+}$  stores and activated CRAC channels (Fig. 9 A). After maximal activation, 30  $\mu$ M progesterone (Fig. 9 B, application bar) had no effect on the amplitude or the current-voltage characteristics ( $n = 6$  cells). This experiment rules out direct CRAC channel block as a possible contributor to the inhibition of  $Ca^{2+}$  signaling by progesterone; instead, it appears that progesterone blocks  $Ca^{2+}$  signaling by inhibiting  $K^+$  channels, indirectly reducing the driving force for  $Ca^{2+}$  entry.  $Cl^-$  channels have also been implicated in lymphocyte signaling mechanisms by helping to maintain  $E_m$  during T cell acti-

vation (20, 21). However, superfusion of B3Z or Jurkat cells with 50  $\mu$ M progesterone did not affect the amplitude or the current-voltage characteristics of  $Cl^-$  currents induced by cell swelling (Fig. 9, C and D).

## Discussion

In this report, we demonstrate by patch-clamp measurement that progesterone directly blocks  $K_V$  and  $K_{Ca}$  channels, but not  $Ca^{2+}$  or  $Cl^-$  channels in T lymphocytes. Furthermore, we show that  $K^+$  channel blockade is associated with membrane depolarization, inhibition of  $Ca^{2+}$  signaling, and a reduction of NF-AT-driven gene expression. Since NF-AT links activation of the TCR to IL-2 production, interruption of these signals would inhibit production of the major proliferative cytokine for T cells. We propose that  $K^+$  channel blockade provides a mechanism contributing to the immunosuppressive effects of progesterone.

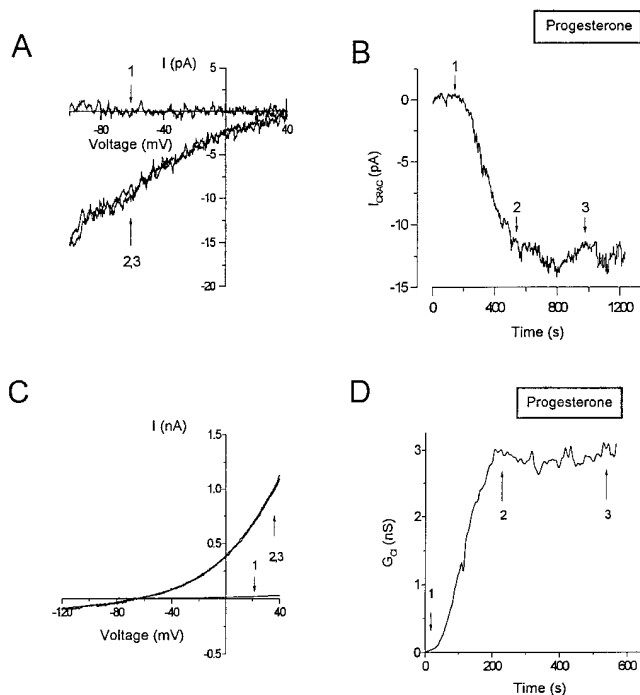
The rapid onset and reversibility of  $K_V$  channel block by progesterone is incompatible with changes in mRNA or protein synthesis, suggesting that these effects are not mediated by the classical steroid receptor pathway (40). The progesterone antagonist RU 486 is nearly as potent as progesterone in blocking both  $K_V$  channels and gene expression, also implicating a nongenomic action of proges-

**Table 2.** Percent Inhibition of Various Channel Types by Progesterone

Cloned channels							
Gene	Kv1.1	Kv1.2	Kv1.3	Kv1.4	Kv1.5	Kv3.1	hSKM1
Cell type	L929	NGK1	L929	LTK	MEL	L929	HEK
	31 $\pm$ 6	45 $\pm$ 10	44 $\pm$ 9	23 $\pm$ 8	25 $\pm$ 2	53 $\pm$ 3	11 $\pm$ 1
Native channels							
Channel	$K_V$	$K_V$	$K_V$ (CTX)	$K_{Ca}$	CRAC	$Cl^-$	$K_{IR}$
Cell type	Human T	B3Z	Human T	Human T, act.	Jurkat T	Jurkat T	RBL
	50 $\pm$ 6	40 $\pm$ 10	70 $\pm$ 20	34 $\pm$ 11	0	0	4 $\pm$ 12

The panel of cloned  $K_V$  channels was provided by Dr. K. George Chandy (Department of Physiology and Biophysics, University of California, Irvine), as described (reference 55). The voltage-gated  $Na^+$  channel clone hSKM1, originally derived from skeletal muscle, was made by Dr. Frank Lehmann-Horn (Department of General Physiology, University of Ulm, Germany). Peak  $Na^+$  currents were evaluated at +10 mV.  $K_V$  currents were evoked by depolarizing pulses, as in Fig. 5. CTX-resistant  $K_V$  channels [ $K_V$  (CTX)] were studied in the presence of 100 nM CTX, as in Fig. 7.  $K_{Ca}$  channels were activated by 1  $\mu$ M  $[Ca^{2+}]_i$ , as in Fig. 8. CRAC and  $Cl^-$  channels were activated by  $Ca^{2+}$ -store depletion or by cell swelling, respectively, as in Fig. 9. Inwardly rectifying  $K^+$  ( $K_{IR}$ ) currents were evaluated during voltage-ramp stimuli. In each case, progesterone was tested at 30  $\mu$ M, except for  $K_V$  (CTX),  $K_{Ca}$ , and  $Cl^-$  channels tested at 50  $\mu$ M. Data are presented as mean  $\pm$  SD, with at least three separate experiments for each channel type.





**Figure 9.** Progesterone does not affect CRAC or  $\text{Cl}^-$  channels. (A) Whole-cell recordings of  $\text{Ca}^{2+}$  current through CRAC channels measured during voltage ramps from  $-100$  to  $+40$  mV for a duration of 200 ms. The pipette solution contained (in mM) 128  $\text{Cs}^+$  aspartate, 12 BAPTA, 0.9  $\text{CaCl}_2$ , 3.16  $\text{MgCl}_2$ , Hepes (pH 7.2). The external solution had the following composition (in mM): 150  $\text{NaMeSO}_3$ , 20  $\text{CaCl}_2$ , 10 glucose, 10 Hepes (pH 7.4). (B) Time-dependent changes in the amplitude of the current measured at  $-80$  mV. Arrows, Representative currents recorded before store depletion (1), and after maximal induction activation of CRAC channels, while superfusing cells with control solution (2) or with an external solution containing  $30 \mu\text{M}$  progesterone (3). (C) Whole-cell recordings of swelling-activated  $\text{Cl}^-$  current ( $I_{\text{Cl}}$ ) measured during voltage ramps from  $-120$  to  $+40$  mV for a duration of 200 ms. The pipette solution contained (in mM) 140  $\text{Cs}^+$  aspartate, 2  $\text{MgCl}_2$ , 4  $\text{MgATP}$ , 1  $\text{CaCl}_2$ , 10 EGTA, 10 Hepes (pH 7.2). For the induction of  $I_{\text{Cl}}$ , the pipette solution was made hypertonic (390–400 mosmol) by the addition of 100 mM glucose. Currents are shown before the onset of cell swelling (1), and after maximal induction of  $I_{\text{Cl}}$ , while superfusing cells with control solution (2) or with an external solution containing  $50 \mu\text{M}$  progesterone (3). (D) Time-dependent changes in the slope conductance measured at the reversal potential for  $\text{Cl}^-$ .

terone. Furthermore, channel inactivation enhances block by progesterone, suggesting that the state of the channel modulates the affinity of progesterone. In T cells, the direct block of  $\text{K}_V$  channels by dihydroquinolines and benzhydryl piperidines is also enhanced by inactivation (41, 42). In addition, progesterone blocks  $\text{Kv1.3}$  channels exogenously expressed in a cell line (Table 2). Progesterone also blocks other  $\text{K}_V$  and  $\text{K}_{\text{Ca}}$  channels with low affinity. These data suggest that progesterone blocks  $\text{K}^+$  channels directly, rather than acting via the classical nuclear progesterone receptor pathway.

Channel blockade by progesterone is not without prece-

dent. Previous studies demonstrated that progesterone blocks voltage-gated  $\text{Ca}^{2+}$  channels and a variety of  $\text{K}^+$  channels in smooth muscle cells and a variety of  $\text{K}^+$  channels in MDCK cells and hepatocytes (43–45). Several transmitter-activated channels are also suppressed by progesterone in the micromolar concentration range (46–49). In contrast to its effects on somatic cells, progesterone activates  $\text{Ca}^{2+}$  influx in sperm (50, 51). We found no evidence for progesterone-induced  $\text{Ca}^{2+}$  influx in T cells.

Our data provide the first evidence that an endogenous hormone may act as an immunosuppressant by blocking  $\text{K}^+$  channels. Inhibition of  $\text{K}^+$  channels has been shown to reduce IL-2 production and T cell activation in vitro (22, 23, 52). Moreover, recent studies demonstrated that the peptide scorpion toxin margatoxin, a specific blocker of  $\text{Kv1.3}$  channels, inhibits delayed-type hypersensitivity reaction and reduces response to allogeneic challenge in vivo (25). The depolarization and reduction of the driving force for  $\text{Ca}^{2+}$  entry resulting from  $\text{K}^+$  channel inhibition are sufficient to account for the reduction of  $\text{Ca}^{2+}$  signals and NF-AT-driven gene expression. CRAC channels are inwardly rectifying, and a modest depolarization can reduce  $\text{Ca}^{2+}$  entry significantly, reducing the rise in  $[\text{Ca}^{2+}]_i$  below the threshold for gene expression (for a review, see reference 24). At high concentrations, progesterone reduces  $\text{Ca}^{2+}$  signaling and gene expression almost to control levels, below a plateau level seen with  $100 \text{ nM}$  CTX (21, 53, and data not shown). Progesterone, although acting with low affinity, may reduce  $\text{Ca}^{2+}$  signaling and gene expression to a greater extent than CTX because progesterone also inhibits CTX-resistant  $\text{K}_V$  channels. The block of  $\text{K}^+$  channels by progesterone or RU 486 can also account for previous results showing that progesterone or RU 486 inhibits activation of human T cells in vitro (8, 9), as well as the reduction of the number of  $\text{CD3}^+$  cells in the placenta compared with maternal blood (11, 54).

During pregnancy, immunoregulatory mechanisms must operate locally at the placental interface and be readily reversible to preserve the systemic immune competence of the mother. Several mechanisms involving progesterone may contribute to fetal-maternal protection, including altered expression of MHC class I proteins in fetal tissue, altered T cell subsets, or elaboration of immunosuppressive factors (2). Biochemical measurements have estimated progesterone concentrations to be  $20 \mu\text{M}$  within the placenta (34, 35); concentrations in the vicinity of trophoblasts producing progesterone must be even higher. Average progesterone levels found in the placenta would be sufficient to block lymphocyte  $\text{K}^+$  channels and thereby mediate a highly localized and reversible immunosuppression without compromising the maternal immune system. The affinity of progesterone for  $\text{K}^+$  channels ensures that this mechanism would only be effective in the region of potential contact between allogeneic cells, where progesterone is present at high concentrations.

We thank Dr. Patricia Schmidt for helpful discussions at the onset of this project, Dr. K. George Chandy for providing clones and a panel of stable cell lines, and Dr. Lu Forrest for tissue culture support.

This work is supported by National Institutes of Health grants GM41514 and NS14609 (to M.D. Cahalan), a Schroedinger Stipendium (to H.H. Kerschbaum), and a fellowship of the Alexander von Humboldt Foundation (to C. Eder).

Address correspondence to Michael D. Cahalan, Department of Physiology and Biophysics, University of California, Irvine, CA 92697-4560. Phone: 714-824-7260; Fax: 714-824-3143; E-mail: mcahalan@uci.edu

H.H. Kerschbaum's present address is Department of Physiology, Institute for Zoology, University of Salzburg, 5020 Salzburg, Austria. Claudia Eder's current address is Department of Neurophysiology, Institute of Physiology Humboldt University, D-10019 Berlin, Germany. P.A. Negulescu's present address is Aurora Biosciences, 11010 Torreyana Rd., San Diego, CA 92121.

Received for publication 20 April 1998 and in revised form 30 July 1998.

## References

1. Stites, D.P., and P.K. Siiteri. 1983. Steroids as immunosuppressants in pregnancy. *Immunol. Rev.* 75:117-138.
2. Pepe, G.J., and E.D. Albrecht. 1995. Actions of placental and fetal adrenal steroid hormones in primate pregnancy. *Endocr. Rev.* 16:608-648.
3. Beer, A.E., and J.O. Sio. 1982. Placenta as an immunological barrier. *Biol. Reprod.* 26:15-27.
4. Gurka, G., and R.E. Rocklin. 1987. Reproductive immunology. *JAMA (J. Am. Med. Assoc.)* 258:2983-2987.
5. Hunt, J.S. 1994. Immunologically relevant cells in the uterus. *Biol. Reprod.* 50:461-466.
6. Siiteri, P.K., F. Febres, L.E. Clemens, R.J. Chang, B. Gundos, and D. Stites. 1977. Progesterone and maintenance of pregnancy: is progesterone nature's immunosuppressant? *Ann. NY Acad. Sci.* 286:384-397.
7. Siiteri, P.K., and D.P. Stites. 1982. Immunologic and endocrine interrelationships in pregnancy. *Biol. Reprod.* 26:1-14.
8. Clemens, L.E., P.K. Siiteri, and D.P. Stites. 1979. Mechanism of immunosuppression of progesterone on maternal lymphocyte activation during pregnancy. *J. Immunol.* 122:1978-1985.
9. Van Voorhis, B.J., D.J. Anderson, and J.A. Hill. 1989. The effects of RU 486 on immune function and steroid-induced immunosuppression *in vitro*. *J. Clin. Endocrinol. Metab.* 69:1195-1199.
10. Monteroso, V.H., and P.J. Hansen. 1993. Regulation of bovine and ovine lymphocyte proliferation by progesterone: modulation by steroid receptor antagonists and physiological status. *Acta Endocrinol.* 129:532-535.
11. Pavia, C., P.K. Siiteri, J.D. Perlman, and D.P. Stites. 1979. Suppression of murine allogeneic cell interactions by sex hormones. *J. Reprod. Immunol.* 1:33-38.
12. Crabtree, G.R., and N.A. Clipstone. 1994. Signal transmission between the plasma membrane and nucleus of T lymphocytes. *Annu. Rev. Biochem.* 63:1045-1083.
13. Negulescu, P.A., N. Shastri, and M.D. Cahalan. 1994. Intracellular calcium dependence of gene expression in single T lymphocytes. *Proc. Natl. Acad. Sci. USA.* 91:2873-2877.
14. Lewis, R.S., and M.D. Cahalan. 1995. Potassium and calcium channels in lymphocytes. *Annu. Rev. Immunol.* 13:623-653.
15. Timmerman, L.A., N.A. Clipstone, S.N. Ho, J.P. Northrop, and G.R. Crabtree. 1996. Rapid shuttling of NF-AT in discrimination of  $Ca^{2+}$  signals and immunosuppression. *Nature.* 383:837-840.
16. Dolmetsch, R.E., R.S. Lewis, C.C. Goodnow, and J.I. Healy. 1997. Differential activation of transcription factors induced by  $Ca^{2+}$  response amplitude and duration. *Nature.* 386:855-858.
17. Lewis, R.S., and M.D. Cahalan. 1989. Mitogen-induced oscillations of cytosolic  $Ca^{2+}$  and transmembrane  $Ca^{2+}$  current in human leukemic T cells. *Cell Regul.* 1:99-112.
18. Zweifach, A., and R.S. Lewis. 1993. Mitogen-regulated  $Ca^{2+}$  current of T lymphocytes is activated by depletion of intracellular  $Ca^{2+}$  stores. *Proc. Natl. Acad. Sci. USA.* 90:6295-6299.
19. Premack, B.A., T.V. McDonald, and P. Gardner. 1994. Activation of  $Ca^{2+}$  current in Jurkat T cells following the depletion of  $Ca^{2+}$  stores by microsomal  $Ca^{2+}$ -ATPase inhibitors. *J. Immunol.* 152:5226-5240.
20. Phipps, D.J., D.R. Branch, and L.C. Schlichter. 1996. Chloride-channel block inhibits T lymphocyte activation and signalling. *Cell. Signalling.* 8:141-149.
21. Kerschbaum, H.H., P.A. Negulescu, and M.D. Cahalan. 1997. Ion channels,  $Ca^{2+}$  signaling, and reporter gene expression in antigen-specific mouse T cells. *J. Immunol.* 159:1628-1638.
22. Chandy, K.G., T.E. DeCoursey, M.D. Cahalan, C. McLaughlin, and S. Gupta. 1984. Voltage-gated potassium channels are required for human T lymphocyte activation. *J. Exp. Med.* 160:369-385.
23. Lin, C.S., R.C. Boltz, J.T. Blake, M. Nguyen, A. Talento, P.A. Fischer, M.S. Springer, N.H. Sigal, R.S. Slaughter, and M.L. Garcia. 1993. Voltage-gated potassium channels regulate calcium-dependent pathways involved in human T lymphocyte activation. *J. Exp. Med.* 177:637-645.
24. Cahalan, M.D., and K.G. Chandy. 1997. Ion channels in the immune system as targets for immunosuppression. *Curr. Opin. Biotechnol.* 8:749-756.
25. Koo, G.C., J.T. Blake, A. Talento, M. Nguyen, S. Lin, A. Sirotna, K. Shah, K. Mulvany, D.J. Hora, P. Cunningham, et al. 1997. Blockade of the voltage-gated potassium channel Kv1.3 inhibits immune responses *in vivo*. *J. Immunol.* 158:5120-5128.
26. Karttunen, J., and N. Shastri. 1991. Measurement of ligand-

- induced activation in single viable T cells using the lacZ reporter gene element of the human interleukin 2 enhancer. *Proc. Natl. Acad. Sci. USA.* 88:3972–3976.
27. Shastri, N., and F. Gonzalez. 1993. Endogenous generation and presentation of the ovalbumin peptide/K<sup>b</sup> complex to T cells. *J. Immunol.* 150:2724–2736.
  28. Cahalan, M.D., K.G. Chandy, T.E. DeCoursey, and S. Gupta. 1985. A voltage-gated potassium channel in human T lymphocytes. *J. Physiol. (Lond.)* 358:197–237.
  29. Fiering, S.N., M. Roederer, G.P. Nolan, D.R. Micklem, D.R. Parks, and L.A. Herzenberg. 1991. Improved FACS-Gal: flow cytometric analysis and sorting of viable eukaryotic cells expressing reporter gene constructs. *Cytometry.* 12:291–301.
  30. Hamill, O.P., A. Marty, E. Neher, B. Sakmann, and F.J. Sigworth. 1981. Improved patch-clamp techniques for high-resolution current recording from cells and cell-free membrane patches. *Pflügers Arch. Eur. J. Physiol.* 391:85–100.
  31. Horn, R., and A. Marty. 1988. Muscarinic activation of ionic currents measured by a new whole-cell recording method. *J. Gen. Physiol.* 92:145–159.
  32. Grynkiewicz, G., M. Poenie, and R.Y. Tsien. 1985. A new generation of Ca<sup>2+</sup> indicators with greatly improved fluorescence properties. *J. Biol. Chem.* 260:3440–3450.
  33. Thastrup, O., A.P. Dawson, O. Scharff, B. Foder, P.J. Cullen, B.K. Drobak, P.J. Bjerrum, S.B. Christensen, and M.R. Hanley. 1989. Thapsigargin, a novel molecular probe for studying intracellular calcium release and storage. *Agents Actions.* 27:17–23.
  34. Runnebaum, B., H. Runnebaum, I. Stober, and J. Zander. 1975. Progesterone 20 alpha-dihydroprogesterone and 20 beta-dihydroprogesterone levels in different compartments from the human foeto-placental unit. *Acta Endocrinol.* 80: 558–568.
  35. Runnebaum, B., I. Stober, and J. Zander. 1975. Progesterone, 20 alpha-dihydroprogesterone and 20 beta-dihydroprogesterone in mother and child at birth. *Acta Endocrinol.* 80: 569–576.
  36. Gouy, H., D. Cefai, S.B. Christensen, P. Debre, and G. Bismuth. 1990. Ca<sup>2+</sup> influx in human T lymphocytes is induced independently of inositol phosphate production by mobilization of intracellular Ca<sup>2+</sup> stores. A study with the Ca<sup>2+</sup> endoplasmic reticulum-ATPase inhibitor thapsigargin. *Eur. J. Immunol.* 20:2269–2275.
  37. Mason, M.J., M.P. Mahaut-Smith, and S. Grinstein. 1991. The role of intracellular Ca<sup>2+</sup> in the regulation of the plasma membrane Ca<sup>2+</sup> permeability of unstimulated rat lymphocytes. *J. Biol. Chem.* 266:10872–10879.
  38. Verheugen, J.A., H.P. Vijverberg, M. Oortgiesen, and M.D. Cahalan. 1995. Voltage-gated and Ca<sup>2+</sup>-activated K<sup>+</sup> channels in intact human T lymphocytes. Noninvasive measurements of membrane currents, membrane potential, and intracellular calcium. *J. Gen. Physiol.* 105:765–794.
  39. Logsdon, N.J., J. Kang, J.A. Togo, E.P. Christian, and J. Aiyar. 1997. A novel gene, hKCa4, encodes the calcium-activated potassium channel in human T lymphocytes. *J. Biol. Chem.* 272:32723–32726.
  40. Revelli, A., M. Massobrio, and J. Tesarik. 1998. Nongenomic actions of steroid hormones in reproductive tissues. *Endocr. Rev.* 19:3–17.
  41. Michne, W.F., J.W. Guiles, A.M. Treasurywala, L.A. Castonguay, C.A. Weigelt, B. Oconnor, W.A. Volberg, A.M. Grant, C.C. Chadwick, and D.S. Krafte. 1995. Novel inhibitors of potassium ion channels on human T lymphocytes. *J. Med. Chem.* 38:1877–1883.
  42. Nguyen, A., J.C. Kath, D.C. Hanson, M.S. Biggers, P.C. Canniff, C.B. Donovan, R.J. Mather, M.J. Bruns, H. Rauer, J. Aiyar, et al. 1996. Novel nonpeptide agents potently block the C-type inactivated conformation of Kv1.3 and suppress T cell activation. *Mol. Pharmacol.* 50:1672–1679.
  43. Bielefeldt, K., L. Waite, F.M. Abboud, and J.L. Conklin. 1996. Nongenomic effects of progesterone on human intestinal smooth muscle cells. *Am. J. Physiol.* 271:G370–G376.
  44. Waldegger, S., F. Beisse, H. Apfel, S. Breit, H.A. Kolb, D. Haussinger, and F. Lang. 1995. Electrophysiological effects of progesterone on hepatocytes. *Biochim. Biophys. Acta.* 1266: 186–190.
  45. Breit, S., H. Kolb, H. Apfel, C. Haberland, M. Schmitt, D. Haussinger, J. Graf, and F. Lang. 1998. Regulation of ion channels in rat hepatocytes. *Pflügers Arch. Eur. J. Physiol.* 435: 203–210.
  46. Wu, F.S., T.T. Gibbs, and D.H. Farb. 1990. Inverse modulation of gamma-aminobutyric acid- and glycine-induced currents by progesterone. *Mol. Pharmacol.* 37:597–602.
  47. Bertrand, D., S. Valera, S. Bertrand, M. Ballivet, and D. Rungger. 1991. Steroids inhibit nicotinic acetylcholine receptors. *Neuroreport.* 2:277–280.
  48. Valera, S., M. Ballivet, and D. Bertrand. 1992. Progesterone modulates a neuronal nicotinic acetylcholine receptor. *Proc. Natl. Acad. Sci. USA.* 89:9949–9953.
  49. Bergeron, R., C. de Montigny, and G. Debonnel. 1996. Potentiation of neuronal NMDA response induced by dehydroepiandrosterone and its suppression by progesterone: effects mediated via sigma receptors. *J. Neurosci.* 16:1193–1202.
  50. Foresta, C., M. Rossato, and F. Di Virgilio. 1993. Ion fluxes through the progesterone-activated channel of the sperm plasma membrane. *Biochem. J.* 294:279–283.
  51. Blackmore, P.F. 1993. Rapid non-genomic actions of progesterone stimulate Ca<sup>2+</sup> influx and the acrosome reaction in human sperm. *Cell. Signalling.* 5:531–538.
  52. Price, M., S.C. Lee, and C. Deutsch. 1989. Charybdotoxin inhibits proliferation and interleukin 2 production in human peripheral blood lymphocytes. *Proc. Natl. Acad. Sci. USA.* 86: 10171–10175.
  53. Hess, S., M. Oortgiesen, and M.D. Cahalan. 1993. Calcium oscillations in human T and natural killer cells depend upon membrane potential and calcium influx. *J. Immunol.* 150: 2620–2633.
  54. Roussev, R.G., N.G. Higgins, and J.A. McIntyre. 1993. Phenotypic characterization of normal human placental mononuclear cells. *J. Reprod. Immunol.* 25:15–29.
  55. Grissmer, S., A.N. Nguyen, J. Aiyar, D.C. Hanson, R.J. Mather, G.A. Gutman, M.J. Karmilowicz, D.D. Auperin, and K.G. Chandy. 1994. Pharmacological characterization of five cloned voltage-gated K<sup>+</sup> channels, types Kv1.1, 1.2, 1.3, 1.5, and 3.1, stably expressed in mammalian cell lines. *Mol. Pharmacol.* 45:1227–1234.