

UCLA

UCLA Previously Published Works

Title

Differential expression of interferon- γ and chemokine genes distinguishes Rasmussen encephalitis from cortical dysplasia and provides evidence for an early Th1 immune response

Permalink

<https://escholarship.org/uc/item/9zg1h5qs>

Journal

Journal of Neuroinflammation, 10(1)

ISSN

1742-2094

Authors

Owens, Geoffrey C
Huynh, My N
Chang, Julia W
[et al.](#)

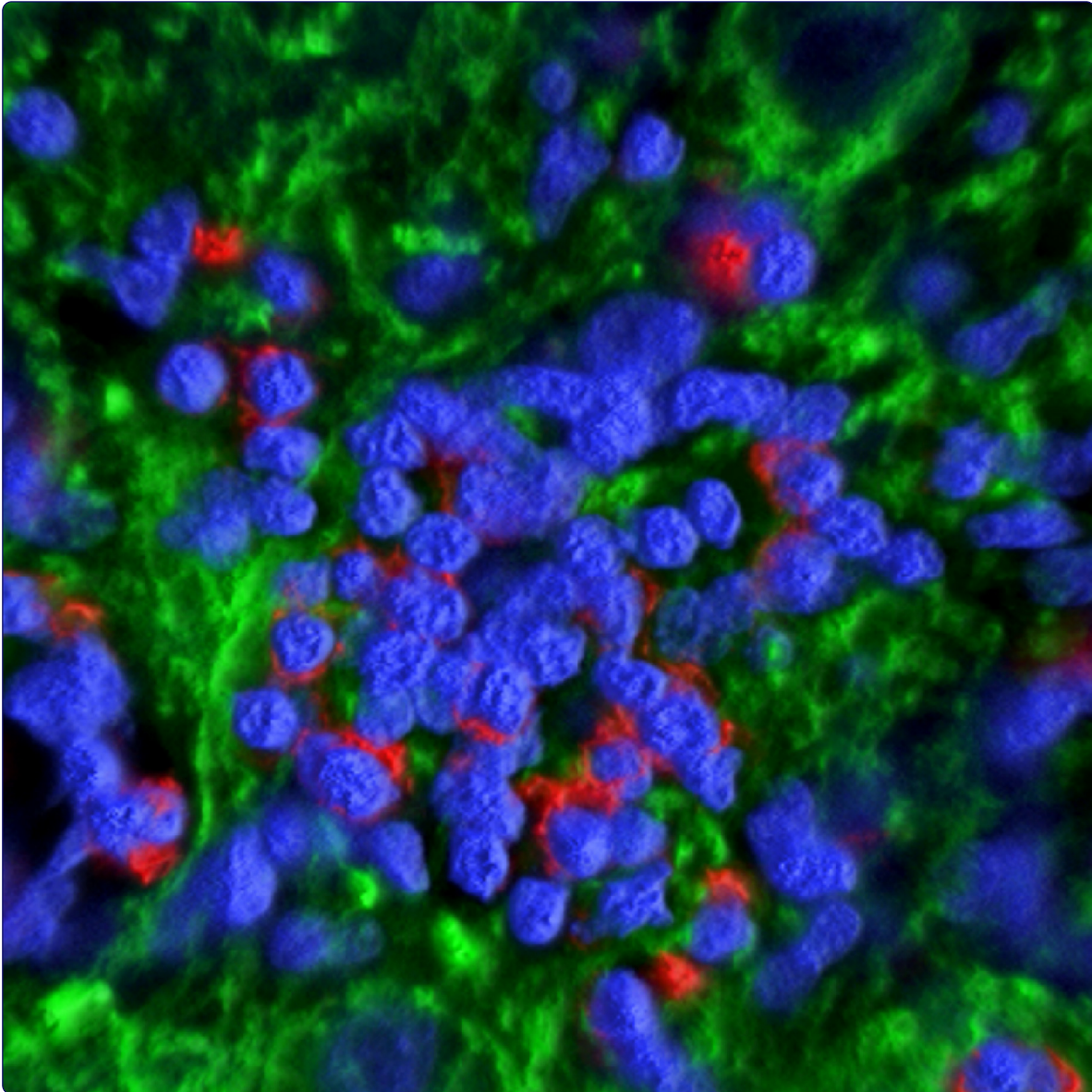
Publication Date

2013-05-02

DOI

<http://dx.doi.org/10.1186/1742-2094-10-56>

Peer reviewed



Differential expression of interferon- γ and chemokine genes distinguishes Rasmussen encephalitis from cortical dysplasia and provides evidence for an early Th1 immune response

Owens *et al.*

RESEARCH

Open Access

Differential expression of interferon- γ and chemokine genes distinguishes Rasmussen encephalitis from cortical dysplasia and provides evidence for an early Th1 immune response

Geoffrey C Owens^{1,7*}, My N Huynh¹, Julia W Chang¹, David L McArthur¹, Michelle J Hickey², Harry V Vinters^{2,3}, Gary W Mathern^{1,4,5,6†} and Carol A Kruse^{1,6†}

Abstract

Background: Rasmussen encephalitis (RE) is a rare complex inflammatory disease, primarily seen in young children, that is characterized by severe partial seizures and brain atrophy. Surgery is currently the only effective treatment option. To identify genes specifically associated with the immunopathology in RE, RNA transcripts of genes involved in inflammation and autoimmunity were measured in brain tissue from RE surgeries and compared with those in surgical specimens of cortical dysplasia (CD), a major cause of intractable pediatric epilepsy.

Methods: Quantitative polymerase chain reactions measured the relative expression of 84 genes related to inflammation and autoimmunity in 12 RE specimens and in the reference group of 12 CD surgical specimens. Data were analyzed by consensus clustering using the entire dataset, and by pairwise comparison of gene expression levels between the RE and CD cohorts using the Harrell-Davis distribution-free quantile estimator method.

Results: Consensus clustering identified six RE cases that were clearly distinguished from the CD cases and from other RE cases. Pairwise comparison showed that seven mRNAs encoding interferon- γ , CCL5, CCL22, CCL23, CXCL9, CXCL10, and Fas ligand were higher in the RE specimens compared with the CD specimens, whereas the mRNA encoding hypoxanthine-guanine phosphoribosyltransferase was reduced. Interferon- γ , CXCL5, CXCL9 and CXCL10 mRNA levels negatively correlated with time from seizure onset to surgery ($P < 0.05$), whereas CCL23 and Fas ligand transcript levels positively correlated with the degree of tissue destruction and inflammation, respectively ($P < 0.05$), as determined from magnetic resonance imaging (MRI) T2 and FLAIR images. Accumulation of CD4⁺ lymphocytes in leptomeninges and perivascular spaces was a prominent feature in RE specimens resected within a year of seizure onset.

Conclusions: Active disease is characterized by a Th1 immune response that appears to involve both CD8⁺ and CD4⁺ T cells. Our findings suggest therapeutic intervention targeting specific chemokine/chemokine receptors may be useful in early stage RE.

Keywords: Inflammation, Rasmussen encephalitis, Cortical dysplasia, Epilepsy, Gene expression, T cells, Chemokines

* Correspondence: geoffreyowens@mednet.ucla.edu

†Equal contributors

¹Department of Neurosurgery, David Geffen School of Medicine, University of California, Los Angeles, CA, USA

⁷UCLA Neurosurgery, Gonda Center, Room 1554, Box 951761, Los Angeles, CA 90095, USA

Full list of author information is available at the end of the article

Background

Rasmussen encephalitis (RE) is an inflammatory neurodegenerative disease primarily seen in young children. It is clinically characterized by intense focal and generalized seizures with inflammation almost invariably confined to one cerebral hemisphere [1-3]. Seizure frequency may decrease over time, but patients are left with unilateral hemiparesis and significant cognitive deficits [4,5]. Histopathologic examination of RE brain tissue, usually after years of seizures, reveals the presence of activated microglia and T lymphocytes [6-8]. CD8⁺ T cells containing granzymes are observed in close apposition to neurons and astrocytes, but not oligodendrocytes [6,9]. Auto-antibodies against the glutamate receptor GluR3, once considered a possible cause of RE [10], are not present in all RE cases and are not specific to the disease [11-13]. Circulating antibodies to other neuronal proteins are found in other RE cases [14-16], leading to the view that a humoral immune response may be a secondary event to T cell immunity [6,17]. Thus, RE resembles an autoimmune disease although the histopathology is also consistent with an immune response to a virus or other infectious agent [1,17]. Cytomegalovirus, herpes simplex virus, and Epstein Barr virus sequences have been detected in some RE brain specimens, but have not been reproducibly identified in all cases [18-22]. Neither autoimmunity nor infection can easily explain the unilateral hemispheric involvement.

To gain further insight into the immunopathology of RE, we measured the relative expression of 84 mRNA transcripts associated with inflammation and autoimmunity in brain tissue from 12 RE and 12 cortical dysplasia (CD) epilepsy patients. The CD cases constituted a reference group against which to compare gene expression levels. Inflammation is associated with CD, but is less severe than in RE, and T cell involvement is limited [23,24]. Quantitative differences in transcript levels between RE and CD specimens were found for several genes involved in the activation and recruitment of effector T cells. The highest levels of expression were found in early stage RE cases.

Methods

Cohort recruitment and clinical variables

Under University of California, Los Angeles, (UCLA) Institutional Review Board (IRB) approval, brain tissue was collected at surgery as part of UCLA's Pediatric Epilepsy Surgery program. Informed consent to use the surgically resected tissue for research was obtained through the parents or legal guardians. The 12 RE and 12 CD cases used in the study were selected with similar ages at surgery. Seven CD cases were classified as CDI, and five as CDII [25]. The clinical protocols for patient evaluation

and surgical procedures for collection and processing of cortical specimens have been previously published [26,27]. Clinical variables included, age at seizure onset, age at surgery, and disease progression (age at seizure onset to age at surgery). Magnetic resonance imaging (MRI) scans were assessed by one investigator (GWM). A semiquantitative score was assigned to the T2 and FLAIR signal changes (0 = none, 1 = slight; 2 = mild; 3 = moderate; 4 = extensive) to estimate the degree of tissue destruction and inflammation, respectively.

Real-time PCR and analysis

Total RNA was purified from flash frozen blocks of involved tissue consisting of mostly cortical gray matter (approximately 50 mg) using Trizol™ (Life Technologies, Carlsbad, CA, USA) and reverse transcribed (Qiagen, Valencia, CA, USA). PCR reactions were carried out in an ABI 7300 thermocycler using SYBR™ green chemistry (SABiosciences, Valencia, CA, USA). The 96-well format qPCR array contained primers for 84 genes of interest and 5 reference genes (SABiosciences inflammation and autoimmunity qPCR array, cat no. PAHS-0077Z). Standard cycling parameters were used as follows: 1 cycle: 95°C 10 min, 40 cycles: 95°C 15 sec, 60°C 1 min. As part of the cycling program, all PCR products were thermally denatured and dissociation curves were obtained. Two of the primer sets resulted in dissociation curves with multiple peaks (CCL16 and CCL24) and were eliminated from the analysis. To calculate relative transcript levels, baseline-subtracted fluorescence values per cycle for each primer set were entered into LinRegPCR [28] and PCR efficiencies (E) and Ct values were determined. The relative expression of each gene (X_0) [29] in each array was calculated from:

$$X_0 = E^{-Ct}$$

NormalFinder [30] was used to identify the least variable housekeeping gene across the 24 arrays. *ACTB* encoding β -actin was found to be the most stable reference gene, and was used to normalize all of the data including the four other reference genes (*HPRT1*, *RPL13A*, *GAPDH*, *B2M*). Samples were grouped by consensus clustering [31] using the non-negative matrix factorization algorithm [32] found in the GENE-E bioinformatics package (www.broadinstitute.org). Statistical analyses utilized R-project programs (www.r-project.org). Plots were generated by the Deducer graphical user interface and exported into CorelDRAW X6 (Corel Corporation, Ottawa, ON, Canada). Significant differences ($P < 0.05$) in gene expression between RE and CD cases were determined by pairwise comparison of the distribution of transcript levels for each gene using Harrell-Davis quantile estimators [33,34].

Table 1 Summary of clinical variables for Rasmussen encephalitis (RE) and cortical dysplasia (CD) cohorts

Clinical variable	RE (n = 12)	CD (n = 12)	P value
Age at surgery (years)	9.9 ± 3.1	9.2 ± 3.6	<i>P</i> = 0.621 ^a
Age at seizure onset (years)	6.4 ± 3.1	2.8 ± 2.4	<i>P</i> = 0.005^a
Time from onset to surgery (years)	3.5 ± 3.5	6.5 ± 3.3	<i>P</i> = 0.047^a
Number of AED pre-surgery	3 ± 1	3 ± 1	<i>P</i> = 0.248 ^a
Side (Left/Right)	4/8	6/6	<i>P</i> = 0.408 ^b
Gender (Female/Male)	5/7	8/4	<i>P</i> = 0.219 ^b
T2 Index	2.5	0	<i>P</i> = 0.016^c
FLAIR Index	2	1	<i>P</i> = 0.003^c

Mean ± SD or median values are shown. *P* values calculated as ^at-test.

^bChi square or ^cMann-Whitney. AED, antiepileptic drugs; FLAIR, fluid attenuated inversion recovery.

Immunocytochemistry and image analysis

Paraffin-embedded blocks of involved tissue were serially sectioned (5 μm), deparaffinized, and microwaved for 20 minutes in buffered citrate (10 mM, pH 6.0) for antigen retrieval. After one hour in blocking solution (Impress Kit, Vector Laboratories, Burlingame, CA, USA) sections

were incubated overnight at 4°C with rabbit anti-human CD4 (1:250, Novus Biologicals, Littleton, CO, USA) or mouse anti-human CD8 (1:100, Dako, Carpinteria, CA, USA). Sections were immunostained for one hour at 25°C with peroxidase-conjugated anti-rabbit or anti-mouse secondary antibodies (Impress Kit, Vector Laboratories)

Table 2 Clinical variables associated with Rasmussen encephalitis and cortical dysplasia patient specimens

Specimen	Gender	Age at onset (years)	Age at surgery (years)	Onset to surgery (years)	Number of AEDs at surgery	Etiology	Affected hemisphere	Operation	T2 ^a	FLAIR ^a
RE1	M	4	4.75	0.75	2	RE	Right	Hemispherectomy	1	4
RE2	F	6.7	7.5	0.8	5	RE	Right	Hemispherectomy	3	1
RE3	F	4.5	10	5.5	4	RE	Right	Hemispherectomy	2	1
RE4	M	2.5	10	7.5	3	RE	Left	Hemispherectomy	1	1
RE5	M	9.25	10.5	1.25	3	RE	Left	Hemispherectomy	3	2
RE6	F	8	13	5	0	RE	Right	Hemispherectomy	4	3
RE7	M	12	13.5	1.5	4	RE	Left	Hemispherectomy	1	2
RE8	M	8	10.1	2.1	2	RE	Right	Hemispherectomy	2	1
RE9	F	4.1	6.25	2.15	4	RE	Right	Hemispherectomy	3	2
RE10	F	10	12.2	2.2	4	RE	Right	Hemispherectomy	3	3
RE11	M	2	14.4	12.2	4	RE	Left	Hemispherectomy	3	2
RE12	M	5.3	6.3	1	2	RE	Right	Hemispherectomy	1	1
CD1	F	5	14.2	9.2	2	CD1	Right	Temporal	1	1
CD2	F	0.75	3.2	2.45	2	CD1	Left	Frontal-Parietal	0	0
CD3	F	1.5	10.2	8.7	3	CD1/HS	Left	Temporal	0	1
CD4	F	3	6.5	3.5	1	CD1	Right	Temporal	1	1
CD5	F	1.4	9	7.6	4	CD	Right	Frontal	1	1
CD6	F	9	12.3	3.3	3	CD2A	Left	Temporal	1	1
CD7	F	3	8.5	5.5	2	CD2A	Right	Temporal	0	0
CD8	M	2.3	14.5	12.2	3	CD1	Left	Temporal-Parietal	0	1
CD9	M	0.1	5.2	5.1	2	CD1	Left	Parietal	0	1
CD10	F	0.75	9.3	8.55	4	CD1	Right	Hemispherectomy	0	0
CD11	M	3	12	9	3	CD2B	Left	Parietal	2	1
CD12	M	3.5	5.25	1.75	1	CD1	Right	Hemispherectomy	0	0

^aEvaluation of T2 and FLAIR signal changes on scales of 0 to 4.

AED, antiepileptic drugs; CD, cortical dysplasia; FLAIR, fluid attenuated inversion recovery; HS, hippocampal sclerosis; RE, Rasmussen encephalitis.

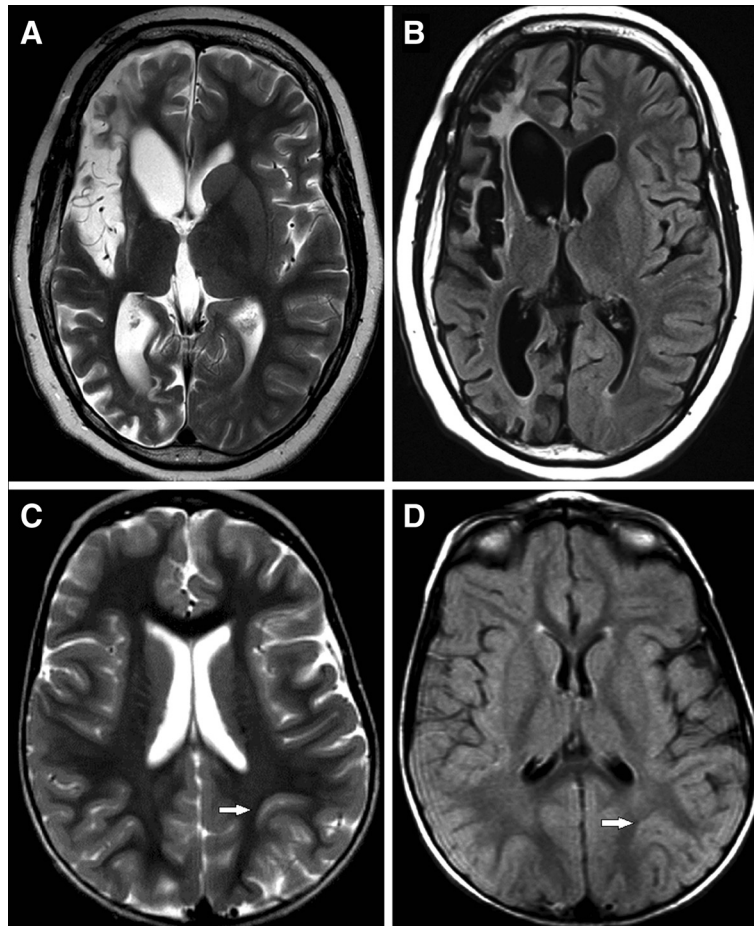


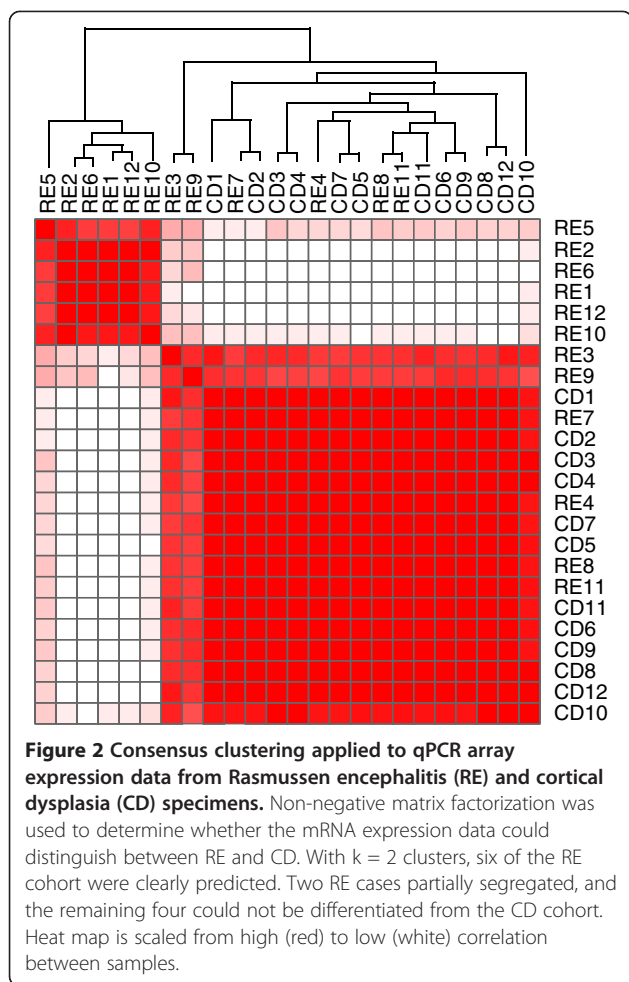
Figure 1 Examples of magnetic resonance imaging (MRI) scans from patients with Rasmussen encephalitis (RE) or cortical dysplasia (CD). Scans were semiquantitatively assessed for T2 (A and C) and FLAIR (B and D) signal changes. The RE case (A and B) was a 13 year old with a five-year history of seizures originating from the right hemisphere. The T2 image was scored severe (4) for tissue destruction (A), and moderate (3) for amount of FLAIR changes (B). The patient with CD (C and D) had abnormality localized to the left parietal area (arrows). The MRI scans were scored zero (no increased signal changes) for T2 (C) and FLAIR changes (D) despite the abnormal anatomy.

followed by incubation with 3,3'-diaminobenzidine (DAB) substrate (MP Biomedicals, Santa Ana, CA, USA), then counterstained with hematoxylin. Sections of tonsil tissue were used as positive controls, and omission of primary antibodies served as negative controls. Images of entire sections were acquired with an Aperio ScanScope XT scanner (Aperio, Vista, CA, USA) and transferred to CorelDRAWX6. Strong DAB staining of CD4 and CD8 immunoreactive cells was quantified using the positive pixel count algorithm, part of the Aperio ImageScope software package.

Western blotting

Blocks of flash frozen involved tissue were homogenized in RIPA buffer containing protease and phosphatase inhibitors (Sigma-Aldrich, St. Louis, MO, USA). Lysates were separated on precast 10% polyacrylamide gels

(Biorad, Hercules, CA, USA) and transferred to PVDF membranes (Biorad). Prestained molecular standards were used (Biorad). The membrane was blocked in Tris-buffered saline (pH 7.4) containing 5% nonfat dried milk and 0.1% Tween™ 20, and probed with a monoclonal antibody to hypoxanthine-guanine phosphoribosyltransferase (anti-HPRT 1:1000, Proteintech Group Inc., Chicago, IL, USA). Proteins were visualized with a secondary antibody conjugated to horseradish peroxidase (1:2500, Jackson ImmunoResearch Laboratories, West Grove, PA, USA) using a chemiluminescent substrate (Thermo-Scientific, Waltham, MA, USA). The blot was stripped and re-probed with a monoclonal antibody to glyceraldehyde 3-phosphate dehydrogenase (anti-GAPDH 1:1000, Stressgen, Victoria, BC, Canada). X-ray films were scanned and processed (background subtraction and enhancement using default settings) in Image J, and exported to CorelDRAWX6.



Results

Rasmussen encephalitis and cortical dysplasia patient cohorts

Table 1 summarizes clinical variables for the RE ($n = 12$) and CD ($n = 12$) cohorts selected for study. Patient data associated with each specimen are provided in Table 2. The age range at surgery was similar, whereas seizure onset occurred at an earlier age in the CD compared with the RE cohort, thus time from seizure onset to surgery also differed. Other clinical parameters were not significantly different, except for the extent of tissue destruction and inflammation measured by changes in the T2-weighted and FLAIR MRI scans, respectively. These parameters were scored semiquantitatively and reflect more injury/inflammation in RE compared with CD cases (Tables 1 and 2). Figure 1 shows examples of graded MRI scans from an RE (A and B) and CD patient (C and D).

A subset of inflammatory genes distinguishes Rasmussen encephalitis from cortical dysplasia

We obtained normalized expression data for 86 genes (82 inflammatory and 4 housekeeping genes). Transcripts of

71 genes were detected in every specimen, confirming that inflammatory genes are expressed in both RE and CD [24]. Thirteen of the remaining genes were expressed in at least six RE specimens, and were retained for analysis. IL23R and IL1F10 transcripts were detected in only three of the RE specimens and were eliminated, leaving a total of 84 genes. IL23R transcripts were expressed in four of the CD cases, and IL1F10 expression was not detected in any of the CD cases.

We employed a consensus clustering method to organize the blinded samples into two groups. Half of the RE cases (RE1, 2, 5, 6, 10, 12) segregated from the 12 CD specimens, two (RE3, 9) partially segregated, and the remaining four (RE4, 7, 8, 11) could not be distinguished from the CD cases (Figure 2). Thus, 6 of 12 RE cases could be clearly identified based solely on the array data. Sample heterogeneity may partly explain why not all of the RE cases clustered. On the other hand, the six clustered RE cases may indicate differences related to clinical variables such as disease progression [35].

Although the clustering analysis revealed variability within the RE cohort, we proceeded to examine whether the expression of particular genes differed between the RE and CD cohorts. The distribution of transcript levels of 40 genes in the RE set and 36 genes in the CD set did not satisfy the Shapiro-Wilk normality test ($P < 0.05$); $>85\%$ of these genes showed P values of <0.01 . Therefore pairwise comparisons were carried out using the Harrell-Davis distribution-free quantile estimator method. This generates robust analyses that are well-protected from violations of normality. The analysis uses an adjusted critical value for determining significance that controls for multiple comparisons. Distributions were divided into deciles. Transcript levels of eight genes were significantly different between the RE and CD samples across all quantiles ($P < 0.05$; [see Additional file 1: Table S1]). Seven genes were expressed at higher levels in the RE samples; whereas hypoxanthine-guanine phosphoribosyltransferase (HPRT) mRNA levels were reduced (Figure 3). Western blot analysis showed less HPRT protein in tissue lysates that were available from two of the RE specimens compared with one of the CD specimens (Figure 4). The other housekeeping genes did not differ between the RE and CD groups [see Additional file 1: Table S1]).

Four of the seven genes with higher expression in the RE specimens, that is, the cytokine IFN- γ , and the chemokines, CCL5/RANTES (regulated and normal T cell expressed and secreted), CXCL9/MIG (monokine induced by IFN- γ), CXCL10/IP-10 (IFN- γ -induced protein 10), play a role in T cell-mediated immunity (see Discussion). Relative expression levels of these genes in the RE cohort were highly positively correlated with each other (Table 3); the lower amounts of these transcripts in the CD cohort were not correlated (Table 4). The

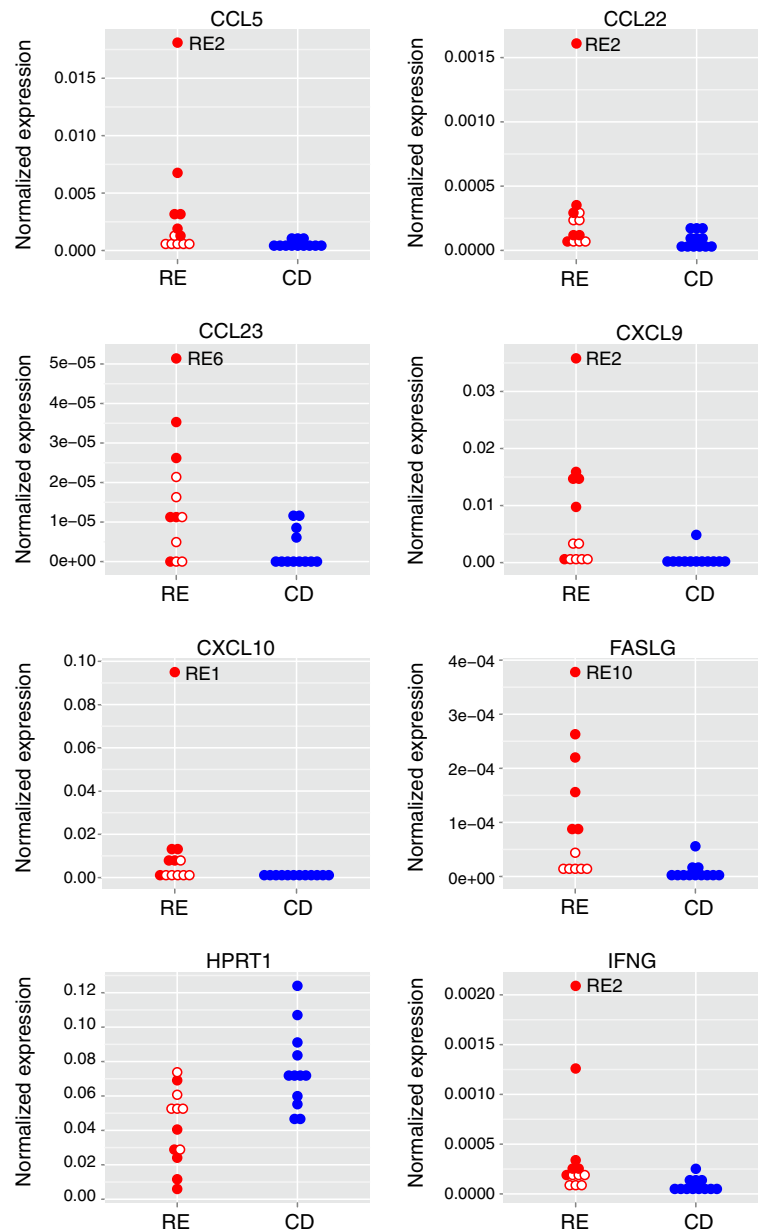
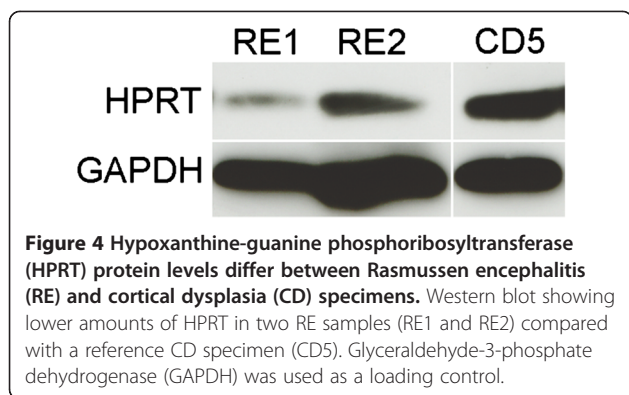


Figure 3 Expression levels of genes that were significantly different between Rasmussen encephalitis (RE) and cortical dysplasia specimens. Stacked dot plots of normalized expression values for each sample are shown. Solid circles identify the six RE specimens separable by consensus clustering (Figure 2); open circles identify the remaining RE cases. The RE sample with the highest inflammatory gene transcript level is indicated.

remaining genes encode two other chemokines, CCL22/MDC (macrophage derived chemokine) and CCL23/MIP-3 (macrophage inflammatory protein 3), and Fas ligand (FasL). FasL mRNA levels positively correlated with IFN- γ , CCL5, and CXCL9 mRNA levels (Table 3); correlation between FasL and CXCL10 did not quite reach the threshold for significance. The amounts of CCL22 and CCL23 mRNA did not correlate with expression of the other genes (Table 3).

Inflammatory gene expression correlated with clinical parameters

We next asked whether the expression of the seven inflammatory genes associated with RE correlated with clinical variables (Table 1). Time from seizure onset to surgery, a measure of disease progression, negatively correlated with mRNA levels for IFN- γ , CCL5, CXCL9 and CXCL10 ($P < 0.05$; Table 3). By contrast, in the CD group the lower amounts of IFN- γ mRNA positively



correlated with time from seizure onset to surgery ($P < 0.05$; Table 4). Positive correlations were found comparing FasL mRNA and severity of inflammation, and CCL23 levels and tissue destruction as assessed by FLAIR and T2 MRIs, respectively (Table 3). As shown in Figure 5A and 5B, the data for IFN- γ and CXCL9 best fit nonlinear functions. Of the six RE cases identified by consensus clustering, five correspond to the earliest times points (filled circles in Figure 5A and 5B), suggesting that an early highly inflammatory phase distinguishes RE from CD. The FasL and CCL23 results are best described by linear functions (Figure 5C and 5D). The number of antiepileptic drugs that the RE and CD patients were receiving at the time of surgery did not significantly correlate with the expression of any of the seven inflammatory genes (Tables 3 and 4).

T cell infiltration in Rasmussen encephalitis brain correlated with levels of inflammatory genes

Based on our findings we predicted that a more pronounced T cell infiltration would be evident in tissue

specimens with higher expression of IFN- γ mRNA. Sections from blocks that were available from seven of the 12 RE specimens were immunostained for CD4 and CD8 expression (four from the group of six with the highest levels of IFN- γ mRNA: RE1, RE2, RE5, and RE10, and three from the remaining specimens: RE3, RE4, and RE8). Quantitation of the strongly immunoreactive cells in digitized images of the stained sections revealed that there were more CD4⁺ and CD8⁺ T cells in sections from three out of the four cases with higher IFN- γ and related chemokine mRNA expression (Figure 6; filled circles). CD4⁺ T cells were associated with clusters of CD8⁺ T cells, but were mainly concentrated in leptomeninges and perivascular (Virchow-Robin) spaces, which contained fewer CD8⁺ T cells (Figure 7).

Discussion

We used a qPCR array to measure inflammatory gene expression in 12 RE specimens and 12 CD specimens, and then correlated the expression of genes that differed between the two groups with clinical parameters. Selection of the CD specimens from the UCLA Pediatric Surgery Program's tissue bank was based on choosing patients whose ages at surgery were approximately the same as the much rarer RE cases that took approximately ten years to accrue. There were no other exclusion criteria. The array included genes encoding pro-inflammatory T helper 1 (Th1) and anti-inflammatory T helper 2 (Th2) cell cytokines, chemokines, Toll-like receptors and other factors involved in downstream signaling. The expression levels of only eight transcripts significantly differed between the RE and CD specimens. With the exception of HPRT mRNA, the transcripts were expressed at higher levels in the RE specimens. Reduced HPRT, a housekeeping gene

Table 3 Cross-correlation matrix (Spearman rank correlation coefficients) generated by comparing gene expression levels with clinical parameters of the Rasmussen encephalitis cohort

	CCL5	CCL22	CCL23	CXCL9	CXCL10	FasL	FLAIR	IFN- γ	T2	Time	AED
CCL5	1.00	0.66^a	0.31	0.73	0.64	0.83	0.12	0.94	0.17	-0.62	0.07
CCL22		1.00	0.06	0.54	0.54	0.22	-0.44	0.5	-0.08	-0.54	0.28
CCL23			1.00	0.12	-0.08	0.50	0.44	0.28	0.64	-0.21	0.08
CXCL9				1.00	0.92	0.63	0.01	0.82	-0.24	-0.82	-0.07
CXCL10					1.00	0.53	0.00	0.73	-0.33	-0.69	0.00
FasL						1.00	0.60	0.87	0.25	-0.54	-0.02
FLAIR							1.00	0.19	0.31	-0.09	-0.19
IFN- γ								1.00	0.07	-0.64	-0.09
T2									1.00	0.27	0.18
Time ^b										1.00	0.12
AED											1.00

^aStatistically significant correlations are in bold type ($P < 0.05$). ^bTime from seizure onset to surgery. AED, antiepileptic drugs.

Table 4 Cross-correlation matrix (Spearman rank correlation coefficients) generated by comparing gene expression levels with clinical parameters of the cortical dysplasia cohort

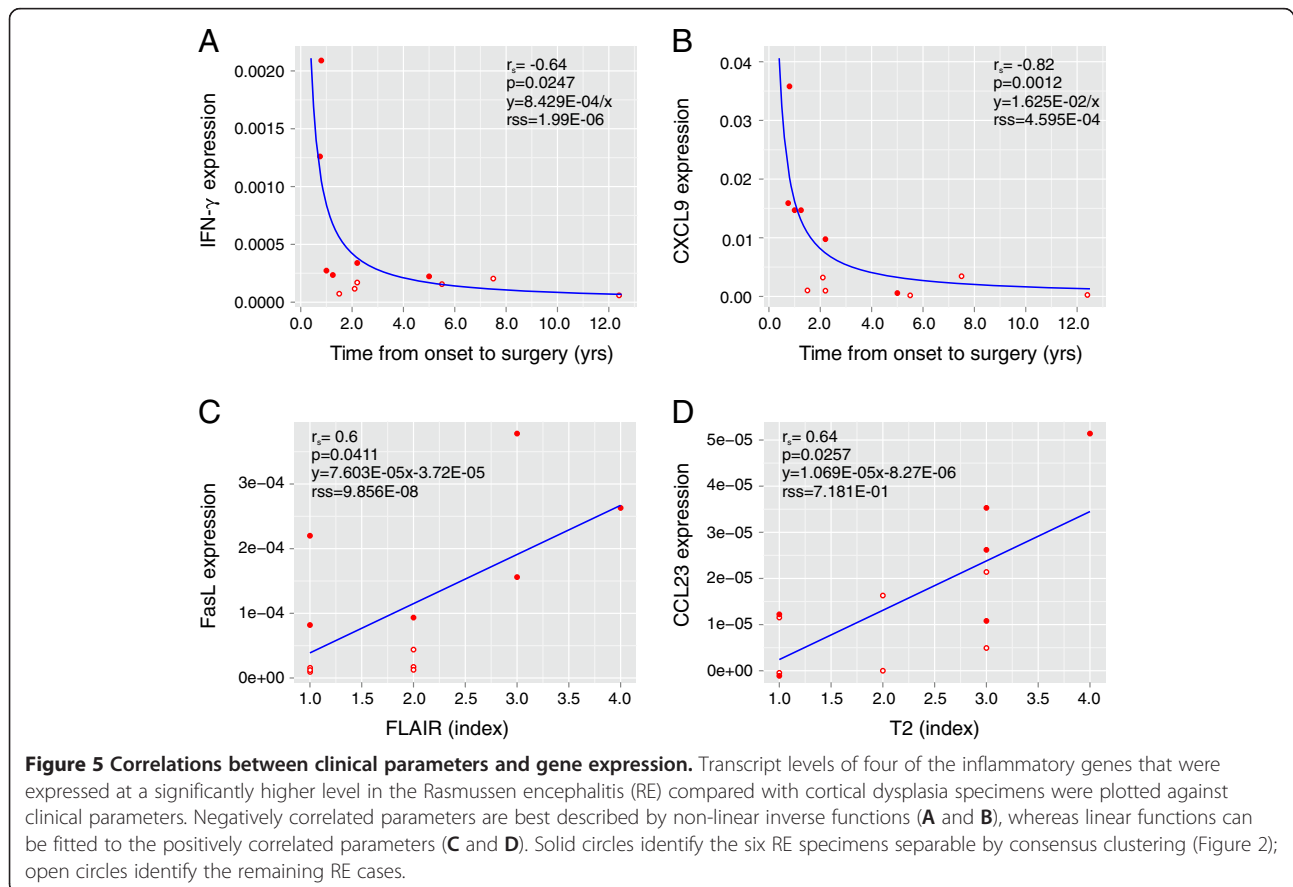
	CCL5	CCL22	CCL23	CXCL9	CXCL10	FasL	FLAIR	IFN- γ	T2	Time	AED
CCL5	1.00	-0.16	0.26	0.3	0.06	0.17	-0.02	0.06	-0.15	0.36	0.43
CCL22		1.00	-0.01	-0.02	0.06	0.08	0.04	0.03	-0.4	0.03	-0.31
CCL23			1.00	0.3	-0.19	0.57	0.21	0.1	0.16	0.12	0.22
CXCL9				1.00	0.08	0.49	0.16	-0.46	-0.1	-0.05	0.08
CXCL10					1.00	-0.12	-0.26	-0.2	-0.42	0.13	0.04
FasL						1.00	0.37	-0.15	0.39	0.23	0.56
FLAIR							1.00	0.18	0.41	0.57	0.25
IFN- γ								1.00	-0.04	0.62^a	0.31
T2									1.00	0.18	0.13
Time ^b										1.00	0.51
AED											1.00

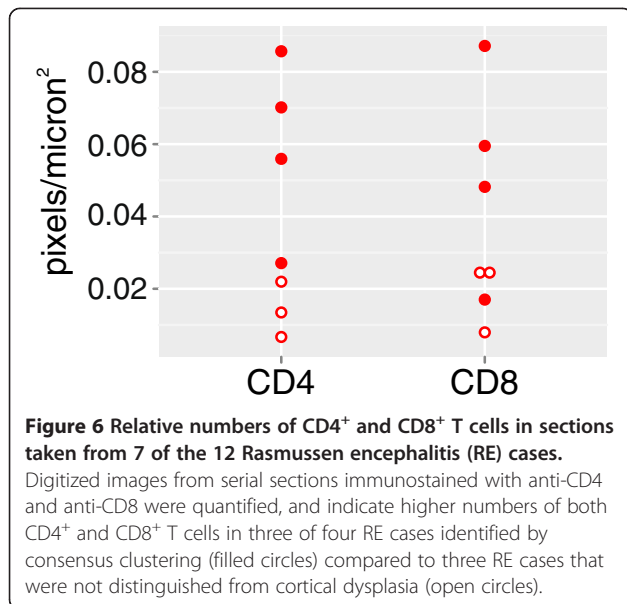
^aStatistically significant correlation is in bold type ($P < 0.05$). ^bTime from seizure onset to surgery. AED, antiepileptic drugs.

on the array, was unexpected and may reflect disease-associated atrophy. Alternatively, a reduced level of HPRT in brain tissue may be significant since a decrease in this enzyme would be expected to affect purine metabolism, with possible effects on brain function [36]. Analysis of HPRT protein levels in more RE samples will be

necessary to establish the significance of this finding to the disease process.

In RE there is clear histopathologic evidence for the involvement of CD8⁺ T cells in the disease process [6-8,23]. In agreement with these data, four of the seven genes whose mRNA levels were higher in RE compared



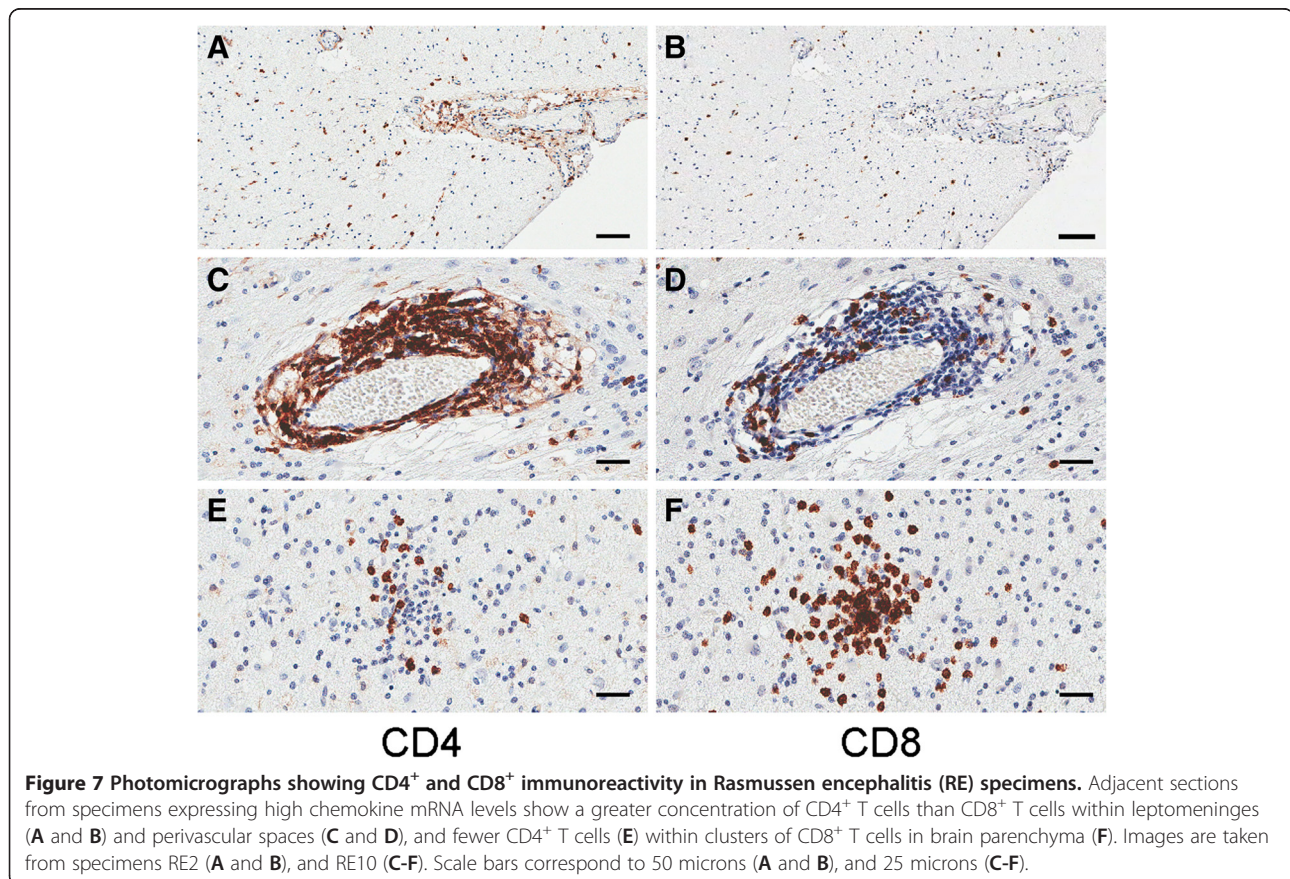


with CD cases encode proteins involved in Th1-driven immune responses, namely IFN- γ , CCL5, CXCL9 and CXCL10. Activated CD8⁺ cytotoxic T cells (Tc1) and CD4⁺ Th1 cells produce IFN- γ [37,38], thus infiltrating CD8⁺ T cells in neuropil and CD4⁺ T cells in Virchow-

Robin spaces and leptomeninges (Figure 7) could be sources of IFN- γ transcripts in the RE brain specimens. Although the immunopathology in RE appears to be driven by Tc1 cells, CD4⁺ cells, in the perivascular space may play a role in sustaining Tc1 activity [39-41]. Natural killer (NK) cells, NKT cells, and $\gamma\delta$ T cells produce IFN- γ [37,42], which may also account for the IFN- γ transcripts in RE tissue. To date, we and others have found no evidence for significant numbers of NK cells in RE brain tissue [7]. However, we have recently identified $\gamma\delta$ T cells in brain infiltrating lymphocytes isolated from fresh RE brain tissue (unpublished data).

IFN- γ can induce major histocompatibility complex (MHC) class I molecules on the surface of neurons, rendering them vulnerable to attack by autoantigen-sensitized MHC class I-restricted Tc1 cells [43]. Further, IFN- γ has been shown to induce bursting of hippocampal pyramidal neurons *in vitro* [44], providing a possible link between T cells and epileptogenesis.

It has been reported that IFN- γ induces the production of CXCL9 by microglia and CXCL10 by microglia and astrocytes [45], and promotes IL-1-induced synthesis of CCL5 by astrocytes [46]. The positive correlation between the relative amounts of CXCL9, CXCL10, CCL5 and IFN- γ mRNA that we observed among the RE



specimens is consistent with these reports. All three chemokines have been implicated in attracting Th1, Tc1, $\gamma\delta$ T cells and NK cells to sites of inflammation [47]. The presence of CXCR3, the receptor for CXCL9 and CXCL10 [48], and CCR5 (CCL5 receptor) on infiltrating T cells in brain sections from a single RE case has been documented [49]. Other single patient studies have provided evidence for the expression of CCL5 and CXCL10 in RE brain tissue [50,51].

Quantitative PCR allowed correlations to be made between the amount of inflammatory gene transcripts and clinical variables. Notably, much higher levels of IFN- γ and CXCL9 mRNAs were detected in specimens from patients that had undergone surgery within shorter times from disease onset compared to later times. This suggests that there is a pronounced Th1 immune response in the early phase of the disease that declines after 1 to 2 years. The observation of large numbers of CD4⁺ and CD8⁺ lymphocytes in sections from specimens in which high levels of IFN- γ mRNA were detected is consonant with an initial Th1 polarized response. In support of these data, it was previously reported that cerebrospinal fluid levels of IFN- γ were higher in the earlier stages of RE [52].

A role for the Fas/FasL-mediated cell death pathway in RE is indicated from the qPCR data. Based on the observation of granzyme B immunoreactivity in T cells in close apposition to neurons and astrocytes, it has been suggested that MHC class I-restricted killing occurs by the perforin lytic pathway [6,9]. However MHC class I-restricted killing of neurons can also occur by Fas ligand-induced apoptosis [53]. On the other hand, the detection of FasL transcripts in the present study could be explained by activation-induced cell death of activated T cells in the brain [54]. In experimental autoimmune encephalitis, astrocytes expressing FasL have been implicated in T cell homeostasis [55].

In contrast to the chemokines associated with a Th1 response, CCL22, which binds CCR4 [56], is associated with a Th2 polarized response, which can facilitate B cell activation [38]. The finding of higher levels of this chemokine in RE brain tissue is therefore consistent with the presence of circulating antibodies to neuronal proteins in some RE patients [10,11,14-16]. Unlike the Th1 cytokines, CCL22 expression did not strongly correlate with time from disease onset to surgery, supporting the notion that a B cell response may be a secondary consequence of tissue destruction mediated by Tc1 cells [17]. CCL22 may also be involved in recruiting immunosuppressive T regulatory cells into the brain to modulate the Tc1 response [57].

A positive correlation was observed between the extent of tissue destruction as measured by MRI and the level of CCL23 mRNA. CCL23 can act as a chemoattractant for monocytes [58]. A role for monocytes in RE pathogenesis

is therefore possible as is the case in viral encephalitis [59]. Since monocytes also produce vascular endothelial growth factor [60], this may explain the vascular changes that have been observed in resected RE but not CD brain tissue [61].

Conclusions

Local inflammation of the brain is seen in both RE and CD, however quantitative differences in a small set of genes associated with inflammation and autoimmunity can clearly distinguish early phase RE cases from CD. In RE brain tissue, the levels of IFN- γ , CXCL9, CXCL10 and CCL5 mRNA were inversely related to the length of time between disease onset and surgery, suggesting a pronounced Th1 response in the early symptomatic phase of the disease. Differences in the number of CD4⁺ and CD8⁺ T cells in brain sections from the same cases supported this conclusion. An unresolved Th1 response can lead to autoimmunity [62], and this may explain the persistent inflammation, presence of circulating antibodies to neuronal proteins, and tissue destruction in RE. One outcome of the present study is the suggestion that blockade of chemokines could constitute a new therapeutic avenue for controlling RE disease progression [63].

Additional file

Additional file 1: Table S1. The Harrell–Davis distribution-free quantile estimator method applied to a pairwise comparison of the expression of each gene.

Abbreviations

CCL5/RANTES: regulated and normal T cell expressed and secreted; CCL22/MDC: macrophage derived chemokine; CCL23/MIP-3: macrophage inflammatory protein 3; CXCL9/MIG: monokine induced by IFN- γ ; CXCL10/IP-10: IFN- γ -induced protein 10; CD: cortical dysplasia; FasL: Fas ligand; FLAIR: fluid attenuated inversion recovery; GAPDH: glyceraldehyde 3-phosphate dehydrogenase; HPRT: hypoxanthine-guanine phosphoribosyltransferase; IFN- γ : interferon-gamma; RE: Rasmussen encephalitis.

Competing interests

The authors declare that they have no competing interests.

Authors' contributions

GCO designed study, performed qPCR, analyzed the data and drafted the manuscript; MNH performed immunocytochemistry; JWC performed western blot analysis; DLMCA carried out statistical analysis; MJH assisted with data interpretation and helped draft the manuscript; HWV provided tissue sections and helped draft the manuscript; GWM provided surgical specimens, evaluated MRI scans, and helped draft the manuscript, CAK, provided project oversight and helped draft the manuscript. All authors read and approved the final manuscript.

Acknowledgements

Financial support provided by: RE Children's Project (CAK/HW/GWM), NIH R01 NS38992 (GWM), NIH R01CA125244 (CAK), R01CA154256 (CAK), the Joan S. Holmes Memorial Research Fund (CAK), the Joan S. Holmes Memorial Postdoctoral Fellowship (MJH), and the University of California Pediatric Neuropathology Consortium (HWV).

Author details

¹Department of Neurosurgery, David Geffen School of Medicine, University of California, Los Angeles, CA, USA. ²Department of Pathology and Laboratory Medicine, David Geffen School of Medicine, University of California, Los Angeles, CA, USA. ³Department of Neurology, David Geffen School of Medicine, University of California, Los Angeles, CA, USA. ⁴Intellectual and Developmental Disabilities Research Center, David Geffen School of Medicine, University of California, Los Angeles, CA, USA. ⁵Mattel Children's Hospital, David Geffen School of Medicine, University of California, Los Angeles, CA, USA. ⁶Brain Research Institute, David Geffen School of Medicine, University of California, Los Angeles, CA, USA. ⁷UCLA Neurosurgery, Gonda Center, Room 1554, Box 951761, Los Angeles, CA 90095, USA.

Received: 6 March 2013 Accepted: 18 April 2013
Published: 2 May 2013

References

- Rasmussen T, Olszewski J, Lloydsmith D: **Focal seizures due to chronic localized encephalitis.** *Neurology* 1958, **8**:435–445.
- Oguni H, Andermann F, Rasmussen TB: **The syndrome of chronic encephalitis and epilepsy. A study based on the MNI series of 48 cases.** *Adv Neurol* 1992, **57**:419–433.
- Farrell MA, Droogan O, Secor DL, Poukens V, Quinn B, Vinters HV: **Chronic encephalitis associated with epilepsy: immunohistochemical and ultrastructural studies.** *Acta Neuropathol* 1995, **89**:313–321.
- Vining EP, Freeman JM, Brandt J, Carson BS, Uematsu S: **Progressive unilateral encephalopathy of childhood (Rasmussen's syndrome): a reappraisal.** *Epilepsia* 1993, **34**:639–650.
- Bien CG, Elger CE, Leitner Y, Gomori M, Ran B, Urbach H, Wilken B, Korn-Lubetzki I: **Slowly progressive hemiparesis in childhood as a consequence of Rasmussen encephalitis without or with delayed-onset seizures.** *Eur J Neurol* 2007, **14**:387–390.
- Bien CG, Bauer J, Deckwerth TL, Wiendl H, Deckert M, Wiestler OD, Schramm J, Elger CE, Lassmann H: **Destruction of neurons by cytotoxic T cells: a new pathogenic mechanism in Rasmussen's encephalitis.** *Ann Neurol* 2002, **51**:311–318.
- Prayson RA, Frater JL: **Rasmussen encephalitis: a clinicopathologic and immunohistochemical study of seven patients.** *Am J Clin Pathol* 2002, **117**:776–782.
- Pardo CA, Vining EP, Guo L, Skolasky RL, Carson BS, Freeman JM: **The pathology of Rasmussen syndrome: stages of cortical involvement and neuropathological studies in 45 hemispherectomies.** *Epilepsia* 2004, **45**:516–526.
- Bauer J, Elger CE, Hans VH, Schramm J, Urbach H, Lassmann H, Bien CG: **Astrocytes are a specific immunological target in Rasmussen's encephalitis.** *Ann Neurol* 2007, **62**:67–80.
- Rogers SW, Andrews PJ, Gahring LC, Whisenand T, Cauley K, Crain B, Hughes TE, Heinemann SF, McNamara JO: **Autoantibodies to glutamate receptor GluR3 in Rasmussen's encephalitis.** *Science* 1994, **265**:648–651.
- Wiendl H, Bien CG, Bernasconi P, Fleckenstein B, Elger CE, Dichgans J, Mantegazza R, Melms A: **GluR3 antibodies: prevalence in focal epilepsy but no specificity for Rasmussen's encephalitis.** *Neurology* 2001, **57**:1511–1514.
- Watson R, Jiang Y, Bermudez I, Houlihan L, Clover L, McKnight K, Cross JH, Hart IK, Roubertie A, Valmier J, Hart Y, Palace J, Beeson D, Vincent A, Lang B: **Absence of antibodies to glutamate receptor type 3 (GluR3) in Rasmussen encephalitis.** *Neurology* 2004, **63**:43–50.
- Mantegazza R, Bernasconi P, Baggi F, Spreafico R, Ragona F, Antozzi C, Bernardi G, Granata T: **Antibodies against GluR3 peptides are not specific for Rasmussen's encephalitis but are also present in epilepsy patients with severe, early onset disease and intractable seizures.** *J Neuroimmunol* 2002, **131**:179–185.
- Watson R, Jepson JE, Bermudez I, Alexander S, Hart Y, McKnight K, Roubertie A, Fecto F, Valmier J, Sattelle DB, Beeson D, Vincent A, Lang B: **Alpha7-acetylcholine receptor antibodies in two patients with Rasmussen encephalitis.** *Neurology* 2005, **65**:1802–1804.
- Alvarez-Baron E, Bien CG, Schramm J, Elger CE, Becker AJ, Schoch S: **Autoantibodies to Munc18, cerebral plasma cells and B-lymphocytes in Rasmussen encephalitis.** *Epilepsy Res* 2008, **80**:93–97.
- Takahashi Y, Mori H, Mishina M, Watanabe M, Kondo N, Shimomura J, Kubota Y, Matsuda K, Fukushima K, Shiroma N, Akasaka N, Nishida H, Imamura A, Watanabe H, Sugiyama N, Ikezawa M, Fujiwara T: **Autoantibodies and cell-mediated autoimmunity to NMDA-type GluRepsilon2 in patients with Rasmussen's encephalitis and chronic progressive epilepsy partialis continua.** *Epilepsia* 2005, **46**(Suppl 5):152–158.
- Granata T, Cross H, Theodore W, Avanzini G: **Immune-mediated epilepsies.** *Epilepsia*, **52**(Suppl 3):5–11.
- Walter GF, Renella RR: **Epstein-Barr virus in brain and Rasmussen's encephalitis.** *Lancet* 1989, **1**:279–280.
- Power C, Poland SD, Blume WT, Girvin JP, Rice GP: **Cytomegalovirus and Rasmussen's encephalitis.** *Lancet* 1990, **336**:1282–1284.
- Vinters HV, Wang R, Wiley CA: **Herpesviruses in chronic encephalitis associated with intractable childhood epilepsy.** *Hum Pathol* 1993, **24**:871–879.
- Atkins MR, Terrell W, Hulette CM: **Rasmussen's syndrome: a study of potential viral etiology.** *Clin Neuropathol* 1995, **14**:7–12.
- Jay V, Becker LE, Otsubo H, Cortez M, Hwang P, Hoffman HJ, Zielenska M: **Chronic encephalitis and epilepsy (Rasmussen's encephalitis): detection of cytomegalovirus and herpes simplex virus 1 by the polymerase chain reaction and in situ hybridization.** *Neurology* 1995, **45**:108–117.
- Wienfeldt M, Clare R, Tung S, Bottini A, Mathern GW, Vinters HV: **Increased activation of Iba1+ microglia in pediatric epilepsy patients with Rasmussen's encephalitis compared with cortical dysplasia and tuberous sclerosis complex.** *Neurobiol Dis* 2009, **34**:432–440.
- Iyer A, Zurolo E, Spliet WG, van Rijen PC, Baayen JC, Gorter JA, Aronica E: **Evaluation of the innate and adaptive immunity in type I and type II focal cortical dysplasias.** *Epilepsia* 2010, **51**:1763–1773.
- Blumcke I, Thom M, Aronica E, Armstrong DD, Vinters HV, Palmini A, Jacques TS, Avanzini G, Barkovich AJ, Battaglia G, Becker A, Cepeda C, Cendes F, Colombo N, Crino P, Cross JH, Delalande O, Dubeau F, Duncan J, Guerrini R, Kahane P, Mathern G, Najm I, Ozkara C, Raybaud C, Represa A, Roper SN, Salamon N, Schulze-Bonhage A, Tassi L, et al: **The clinicopathologic spectrum of focal cortical dysplasias: a consensus classification proposed by an ad hoc task force of the ILAE diagnostic methods commission.** *Epilepsia* 2011, **52**:158–174.
- Cepeda C, Hurst RS, Flores-Hernandez J, Hernandez-Echeagaray E, Klapstein GJ, Boylan MK, Calvert CR, Jocoy EL, Nguyen OK, Andre VM, Vinters HV, Ariano MA, Levine MS, Mathern GW: **Morphological and electrophysiological characterization of abnormal cell types in pediatric cortical dysplasia.** *J Neurosci Res* 2003, **72**:472–486.
- Hemb M, Velasco TR, Parnes MS, Wu JY, Lerner JT, Matsumoto JH, Yudovin S, Shields WD, Sankar R, Salamon N, Vinters HV, Mathern GW: **Improved outcomes in pediatric epilepsy surgery: the UCLA experience, 1986–2008.** *Neurology* 2010, **74**:1768–1775.
- Ramakers C, Ruijter JM, Deprez RH, Moorman AF: **Assumption-free analysis of quantitative real-time polymerase chain reaction (PCR) data.** *Neurosci Lett* 2003, **339**:62–66.
- Thomsen R, Solvsten CA, Linnert TE, Blechingberg J, Nielsen AL: **Analysis of qPCR data by converting exponentially related Ct values into linearly related X0 values.** *J Bioinformatics Computational Biol* 2010, **8**:885–900.
- Andersen CL, Jensen JL, Orntoft TF: **Normalization of real-time quantitative reverse transcription-PCR data: a model-based variance estimation approach to identify genes suited for normalization, applied to bladder and colon cancer data sets.** *Cancer Res* 2004, **64**:5245–5250.
- Monti S, Tamayo P, Mesriov J, Golub T: **Consensus clustering: a resampling-based method for class discovery and visualization of gene expression microarray data.** *Mach Learn* 2003, **52**:91–118.
- Brunet JP, Tamayo P, Golub TR, Mesirov JP: **Metagenes and molecular pattern discovery using matrix factorization.** *Proc Natl Acad Sci USA* 2004, **101**:4164–4169.
- Harrell FE, Davis CE: **A new distribution-free quantile estimator.** *Biometrika* 1982, **69**:635–640.
- Wilcox RR: **Introduction to Robust Estimation and Hypothesis Testing.** 3rd edition. San Diego, CA: Academic; 2012.
- Bien CG, Urbach H, Deckert M, Schramm J, Wiestler OD, Lassmann H, Elger CE: **Diagnosis and staging of Rasmussen's encephalitis by serial MRI and histopathology.** *Neurology* 2002, **58**:250–257.
- Burnstock G, Krugel U, Abbracchio MP, Illes P: **Purinergic signalling: from normal behaviour to pathological brain function.** *Prog Neurobiol* 2011, **95**:229–274.
- Zhu J, Yamane H, Paul WE: **Differentiation of effector CD4 T cell populations.** *Annu Rev Immunol* 2010, **28**:445–489.
- Schoenborn JR, Wilson CB: **Regulation of interferon-gamma during innate and adaptive immune responses.** *Adv Immunol* 2007, **96**:41–101.

39. Bevan MJ: **Helping the CD8(+) T-cell response.** *Nature Rev Immunol* 2004, **4**:595–602.
40. Rocha B, Tanchot C: **Towards a cellular definition of CD8+ T-cell memory: the role of CD4+ T-cell help in CD8+ T-cell responses.** *Curr Opin Immunol* 2004, **16**:259–263.
41. Siffrin V, Brandt AU, Radbruch H, Herz J, Boldakowa N, Leuenberger T, Werr J, Hahner A, Schulze-Toppoff U, Nitsch R, Zipp F: **Differential immune cell dynamics in the CNS cause CD4+ T cell compartmentalization.** *Brain* 2009, **132**:1247–1258.
42. Caccamo N, Todaro M, Sireci G, Meraviglia S, Stassi G, Dieli F: **Mechanisms underlying lineage commitment and plasticity of human gammadelta T cells.** *Cell Mol Immunol* 2013, **10**:30–34.
43. Chevalier G, Suberbielle E, Monnet C, Duplan V, Martin-Blondel G, Farrugia F, Le Masson G, Liblau R, Gonzalez-Dunia D: **Neurons are MHC class I-dependent targets for CD8 T cells upon neurotropic viral infection.** *PLoS Pathog* 2011, **7**:e1002393.
44. Muller M, Fontana A, Zbinden G, Gahwiler BH: **Effects of interferons and hydrogen peroxide on CA3 pyramidal cells in rat hippocampal slice cultures.** *Brain Res* 1993, **619**:157–162.
45. Muller M, Carter S, Hofer MJ, Campbell IL: **Review: The chemokine receptor CXCR3 and its ligands CXCL9, CXCL10 and CXCL11 in neuroimmunity—a tale of conflict and conundrum.** *Neuropathol Appl Neurobiol* 2010, **36**:368–387.
46. Kim MO, Suh HS, Brosnan CF, Lee SC: **Regulation of RANTES/CCL5 expression in human astrocytes by interleukin-1 and interferon-beta.** *J Neurochem* 2004, **90**:297–308.
47. Prendergast CT, Anderton SM: **Immune cell entry to central nervous system—current understanding and prospective therapeutic targets.** *Endocr Metab Immune Disord Drug Targets* 2009, **9**:315–327.
48. Groom JR, Luster AD: **CXCR3 ligands: redundant, collaborative and antagonistic functions.** *Immunol Cell Biology* 2011, **89**:207–215.
49. Trebst C, Staugaitis SM, Tucky B, Wei T, Suzuki K, Aldape KD, Pardo CA, Troncso J, Lassmann H, Ransohoff RM: **Chemokine receptors on infiltrating leucocytes in inflammatory pathologies of the central nervous system (CNS).** *Neuropathol Appl Neurobiol* 2003, **29**:584–595.
50. Baranzini SE, Laxer K, Bollen A, Oksenberg JR: **Gene expression analysis reveals altered brain transcription of glutamate receptors and inflammatory genes in a patient with chronic focal (Rasmussen's) encephalitis.** *J Neuroimmunol* 2002, **128**:9–15.
51. Choi J, Nordli DR Jr, Alden TD, DiPatri A Jr, Laux L, Kelley K, Rosenow J, Schuele SU, Rajaram V, Koh S: **Cellular injury and neuroinflammation in children with chronic intractable epilepsy.** *J Neuroinflammation* 2009, **6**:38.
52. Takahashi Y, Mine J, Kubota Y, Yamazaki E, Fujiwara T: **A substantial number of Rasmussen syndrome patients have increased IgG, CD4+ T cells, TNFalpha, and Granzyme B in CSF.** *Epilepsia* 2009, **50**:1419–1431.
53. Medana IM, Gallimore A, Oxenius A, Martinic MM, Wekerle H, Neumann H: **MHC class I-restricted killing of neurons by virus-specific CD8+ T lymphocytes is effected through the Fas/FasL, but not the perforin pathway.** *Eur J Immunol* 2000, **30**:3623–3633.
54. Arnold R, Brenner D, Becker M, Frey CR, Krammer PH: **How T lymphocytes switch between life and death.** *Eur J Immunol* 2006, **36**:1654–1658.
55. Wang X, Haroon F, Karray S, Martina D, Schluter D: **Astrocytic Fas ligand expression is required to induce T-cell apoptosis and recovery from experimental autoimmune encephalomyelitis.** *Eur J Immunol* 2013, **43**:115–124.
56. Imai T, Nagira M, Takagi S, Kakizaki M, Nishimura M, Wang J, Gray PW, Matsushima K, Yoshie O: **Selective recruitment of CCR4-bearing Th2 cells toward antigen-presenting cells by the CC chemokines thymus and activation-regulated chemokine and macrophage-derived chemokine.** *International Immunol* 1999, **11**:81–88.
57. Columba-Cabezas S, Serafini B, Ambrosini E, Sanchez M, Penna G, Adorini L, Aloisi F: **Induction of macrophage-derived chemokine/CCL22 expression in experimental autoimmune encephalomyelitis and cultured microglia: implications for disease regulation.** *J Neuroimmunol* 2002, **130**:10–21.
58. Youn BS, Zhang SM, Broxmeyer HE, Cooper S, Antol K, Fraser M Jr, Kwon BS: **Characterization of CKbeta8 and CKbeta8-1: two alternatively spliced forms of human beta-chemokine, chemoattractants for neutrophils, monocytes, and lymphocytes, and potent agonists at CC chemokine receptor 1.** *Blood* 1998, **91**:3118–3126.
59. Terry RL, Getts DR, Deffrasnes C, van Vreden C, Campbell IL, King NJ: **Inflammatory monocytes and the pathogenesis of viral encephalitis.** *J Neuroinflammation* 2012, **9**:270.
60. Eubank TD, Galloway M, Montague CM, Waldman WJ, Marsh CB: **M-CSF induces vascular endothelial growth factor production and angiogenic activity from human monocytes.** *J Immunol* 2003, **171**:2637–2643.
61. Wagner AS, Yin NS, Tung S, Mathern GW, Vinters HV: **Intimal thickening of meningeal arteries after serial corticectomies for Rasmussen encephalitis.** *Hum Pathol* 2012, **43**:1308–1313.
62. Goverman J: **Autoimmune T cell responses in the central nervous system.** *Nature Rev Immunol* 2009, **9**:393–407.
63. Schall TJ, Proudfoot AE: **Overcoming hurdles in developing successful drugs targeting chemokine receptors.** *Nature Rev Immunol* 2011, **11**:355–363.

doi:10.1186/1742-2094-10-56

Cite this article as: Owens et al.: Differential expression of interferon- γ and chemokine genes distinguishes Rasmussen encephalitis from cortical dysplasia and provides evidence for an early Th1 immune response. *Journal of Neuroinflammation* 2013 **10**:56.

Submit your next manuscript to BioMed Central and take full advantage of:

- Convenient online submission
- Thorough peer review
- No space constraints or color figure charges
- Immediate publication on acceptance
- Inclusion in PubMed, CAS, Scopus and Google Scholar
- Research which is freely available for redistribution

Submit your manuscript at
www.biomedcentral.com/submit

