

# UCLA

## UCLA Previously Published Works

### Title

Patient-Reported oral health outcome measurement for children and adolescents.

### Permalink

<https://escholarship.org/uc/item/88d5k9v4>

### Journal

BMC oral health, 16(1)

### ISSN

1472-6831

### Authors

Liu, Honghu  
Hays, Ron D  
Marcus, Marvin  
[et al.](#)

### Publication Date

2016-09-01

### DOI

10.1186/s12903-016-0293-x

Peer reviewed

RESEARCH ARTICLE

Open Access



# Patient-Reported oral health outcome measurement for children and adolescents

Honghu Liu<sup>1\*</sup>, Ron D. Hays<sup>2</sup>, Marvin Marcus<sup>1</sup>, Ian Coulter<sup>1</sup>, Carl Maida<sup>1</sup>, Francisco Ramos-Gomez<sup>3</sup>, Jie Shen<sup>1</sup>, Yan Wang<sup>4</sup>, Vladimir Spolsky<sup>1</sup>, Steve Lee<sup>5</sup>, Li Cai<sup>6</sup> and James Crall<sup>1</sup>

## Abstract

**Background:** Oral health is an important component of daily functioning and well-being. A comprehensive patient-reported oral health measure is needed to gauge the impact of oral health status on children and adolescents. This study aims to develop oral health item banks and associated short-form surveys for children and adolescents 2–17 year olds.

**Methods:** Using children and adolescents, ages 2–17 years, selected from diverse dental sites in Greater Los Angeles Area, we propose to develop state-of-the-science methods to create oral health item banks to effectively measure oral health outcomes for children and adolescents. Methods include a literature review of existing measures, focus groups, cognitive interviews, drafting and field testing of survey items, and evaluation of the psychometric properties of the measures.

**Results:** Based on the systematic literature search and focus groups, we identified core (physical health, mental health, and social function domains) and peripheral (e.g., need and access) oral health domains. We then drafted survey items and revised them based on 66 cognitive interviews (27 children/adolescents and 39 parents) with 39 families. The revised items will be administered in a field test of 500 children and adolescents ages 2–17, and their parents.

**Conclusions:** The qualitative methods used in the initial phases of the project (focus group and cognitive interviews) are the initial steps in the development of oral health item banks and associated short-form surveys for children and adolescents. The oral health items can potentially be used to create effective computerized adaptive test and/or create ad hoc short forms targeting specific areas of oral health to survey large populations of children with much less cost compared with traditional clinical oral health examination.

**Keywords:** Oral health, Children, Adolescent, Longitudinal survey, Patient-reported outcomes

## Background

Oral health is an important component of daily functioning and well-being. Healthy People 2020 [1] notes the importance of prevention and control of oral and craniofacial diseases, conditions, and injuries, and of enhancing access to preventive services and dental care. The 2000 Surgeon General's Report on Oral Health in America [2] showed that early childhood caries is one of the most serious and costly health conditions among young children. The need for oral health care is the most

prevalent unmet healthcare need among children and adolescents [3]. Pediatric oral disorders have a negative effect on children's health-related quality of life [4]. The adolescent years could be a difficult emotional period when dental and medical needs may be neglected [5]. Understanding and assessing children and adolescents is complex as they are not a stable target, rather in the stage of emerging-developmental skills and functions.

Patient-reported outcomes (PROs) are important for assessing oral health status and evaluating the impact of dental care. Prior researches have shown that children 8 years and older are mature enough to be able to accurately self-report health issues [6–8], and respond appropriately to questions regarding their functioning and

\* Correspondence: hliu@dentistry.ucla.edu

<sup>1</sup>Division of Public Health & Community Dentistry, School of Dentistry, University of California, Los Angeles (UCLA), Los Angeles, CA, USA  
Full list of author information is available at the end of the article

well-being [9]. More recently, Tsakos et al. (2012)'s study has shown that children as young as 5 years old can provide accurate reports of the impact of oral disorders on their quality of life [10].

Obtaining PROs directly from children, adolescents, and their parents is possible; however, effective assessment requires consideration of developmental issues such as the rapid change in children's cognitive capacities. Self-reports are the primary method of assessment, supplemented by parent or guardian proxy report when a child is unable to accurately self-report (e.g., too young) [11]. The Patient-Reported Outcome Measurement Information System (PROMIS®) was initiated in 2004 to develop and evaluate health-related quality of life measures. The PROMIS Network's overall goal is to develop a publicly available set of standardized instruments for measuring major self-reported health domains that are affected by many chronic illnesses [12].

Several questionnaires for measures of oral health-related quality of life have been produced for use with children or using parents as proxies. These generic questionnaires are designed to cover a variety of oral conditions such as dental caries, malocclusion and craniofacial anomalies. The most frequently used measures for self-completion by children are the Child Perceptions Questionnaire (CPQ) [13–15], Child Oral Impacts on Daily Performances Index (C-OIDP) [16], Child Oral Health Impact Profile (COHIP) [17], and PedsQL Oral Health Scale.

This paper describes the approaches, methods and process of our study for the creation, administration and evaluation of oral health items for children and adolescents 2–17, selected from diverse dental sites in Greater Los Angeles Area. The PROMIS methodologies and framework were adopted in this study, as detailed below.

## Methods

### Measurement framework

Our proposed framework for conceptualizing and addressing oral health domains is summarized in Fig. 1. Children and adolescent characteristics have an impact on oral health determinants, which in turn have an impact on oral health outcomes. Social environmental factors also have an impact on both oral health determinants and oral health outcomes. This model builds upon our previous work on the multi-level influences of oral health [18]. It integrates the life-course concept into the dynamics of oral health by including genetic, biological, behavioral, social, and economic contexts that change as a person develops through childhood, adolescence, young adulthood and later adult life [19].

The study has four carefully designed and well-connected operational phases: (1) a systematic review of

the literature to identify instruments and survey items associated with oral health; (2) focus groups, cognitive interviews, item selection, and drafting of oral health items; and (3) field testing of subject surveys and dental examinations; and (4) psychometric analyses of oral health items. We have already completed Phase 1 and Phase 2 of the study and are now in the middle of Phase 3.

### PHASE 1: Evaluate the relevance of PROMIS and conduct systematic literature review

We conducted systematic literature searches on existing oral health items previously used to measure oral health, particularly those for children and adolescent ages 2–17, as well as their parents, to capture the latest research, through exhaustive searches of PubMed, Google scholar, the Patient-Reported Outcome and Quality of Life Instruments Database, and the Dental, Oral, and Craniofacial Data Resource Center (DRC). The systematic review and search identified all surveys, instruments and items that have been used to date to measure oral health applicable to children and adolescents, ages 2–17. The DRC serves as a resource on dental, oral, and craniofacial data. We searched through DRC by criteria, which include survey title, acronym, sample design type, sample size, general variables, oral health variables, population, survey type, sponsor, and geographic region. Multiple items can be selected under each criterion. Records can be selected that match all or any of the criteria. Search results included survey overview, sample size, geographic region, population, year, interval, survey type, sample design, method/technique, reliability/validity, general variables, and oral health variables. Key instruments were identified to be considered “legacy” instruments. A modified Delphi approach was used to reach agreement on the domain, sub-domains and elements for oral health within the PROMIS domain hierarchy framework. We adopted the PROMIS method of binning (identifying those items thought to represent distinct domains related to oral health) and winnowing (using a consensus process to exclude items that do not meet the domain definitions or are redundant, etc.), and ensure that the items are concise, simple, have the same item stem, and are targeted to appropriate reading level for the children and adolescents.

### PHASE 2: Focus groups, cognitive interviews, and final item selection

Phase 2 involved convening focus groups with racially/ethnically and geographically diverse groups of children, parents, and oral health professionals, and was conducted to help conceptualize oral health PROs. The cut-off criteria used to separate age groups are based on

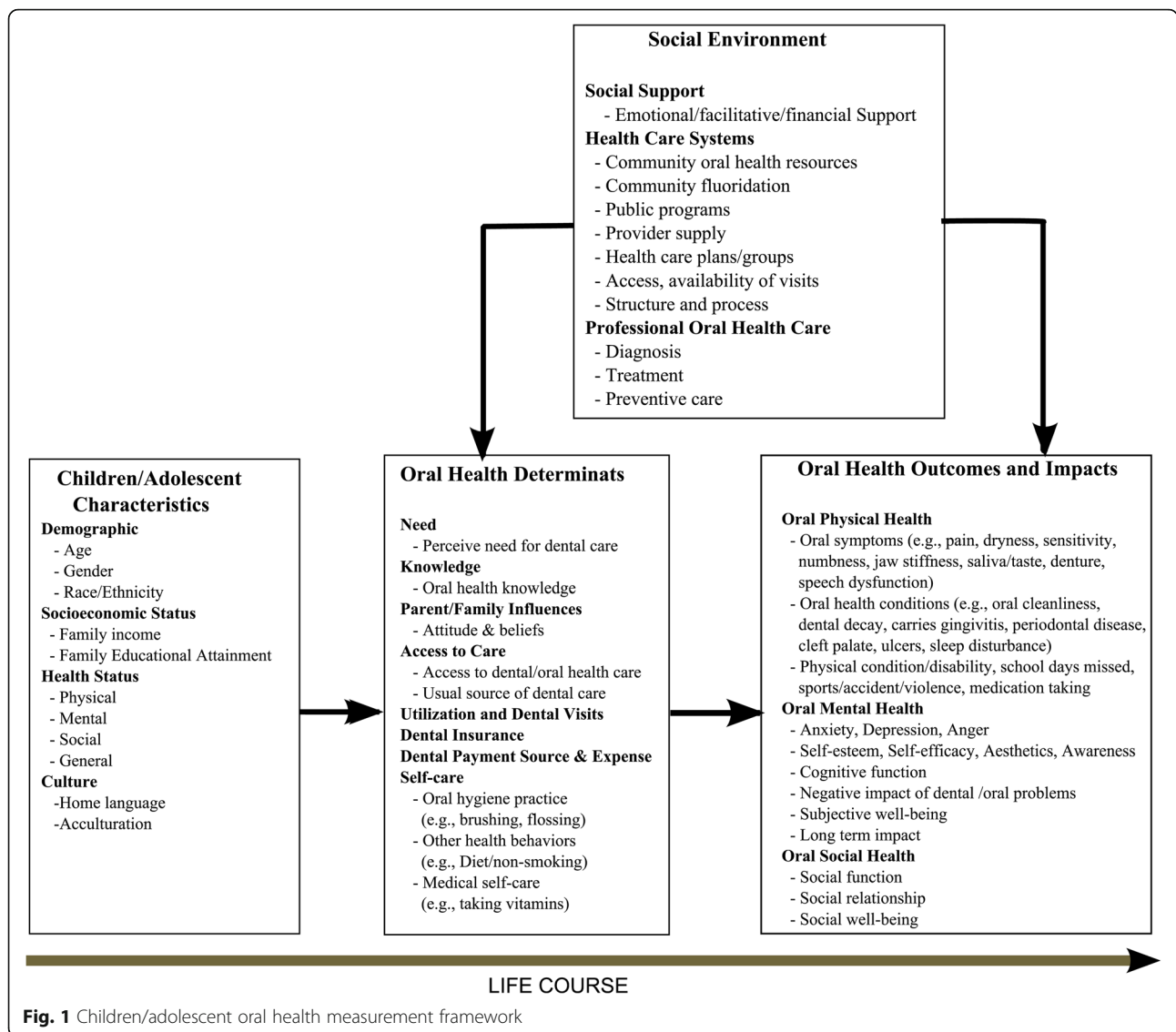


Fig. 1 Children/adolescent oral health measurement framework

children and adolescents’ physical, mental and dental development that are pertinent to that specific age group. The basic age breakdown was related to dentition. In the 2–7 age group, children mainly had primary teeth; in the 8–12 age group, there is mixed dentition, including permanent and primary teeth; the 13–17 age group all have permanent teeth. Adolescents were also more likely to have full orthodontic treatment. We conducted focus group interviews with parents of children ages 2–7, 8–13, and 14–17, and with children/adolescents ages 8–13 and 14–17. These focus groups elicited perceptions of oral health in children and adolescents. Each focus group was digitally recorded and transcribed verbatim. The research team conducted thematic and narrative analysis to identify the terms used by the participants.

Following the focus groups, we drafted survey items and administered them in a series of face-to-face

cognitive interviews with children and adolescents, parents and professionals. Cognitive interviewing provides a means to evaluate participants’ responses to the items and test their understanding of the meaning of the items. For each candidate item, we probed the subject regarding the item content and response options [20]. We explored how respondents recall information, what time frame they use, and what time frame is beyond their recall. Cognitive interviews were conducted using intermittent and retrospective probes following completion of all items. Based on findings from cognitive interviews, items were then refined for the field test.

**PHASE 3: Field test**

The field test collects data to evaluate the oral health items identified through phases 1 and 2. We survey children’s oral health perceptions and conduct dental

clinical examination. Children ages 2–7 receive dental clinical examinations only, and their parents completed the survey as their child's proxy. Children 8–13 and 14–17 received both survey and dental clinical examinations, and their parents also completed surveys. We use a software program called Questionnaire Development System™ (QDS™), developed by Nova Research Company, to build and implement Audio Computer-Assisted Self-Interview Software (ACASI) interviews for child and patient surveys. Each of the surveys contains core items (e.g., demographics and pain) that are applicable to all three age groups and the targeted items that are pertinent only to that specific age group. With the ACASI surveys, each participant hears the same text-to-speech computer-generated voice reading the same instructions and questionnaire items.

Given the large age span of children from 2 to 17, in view of the varying nature of dentation and the level of maturity, we use different versions of the ACASI surveys: one for parents of children ages 2–7, one for children ages 8–17, and one for their parents. Each of the surveys contains core items (e.g., demographics and pain) that are applicable to all three age groups and age-group targeted items.

To evaluate responsiveness to change over time and estimate minimally important differences, a group of 150 randomly selected children and adolescents along with their parents will also complete a follow-up ACASI survey at 6 months from the initial survey to collect information about changes in oral health. They will also be given a follow-up clinical exam at the 6-month period. These children and adolescents will likely have changes, such as loss of primary teeth and body growth, which may affect their aesthetic concept and perception.

#### **Clinical examination**

A dental clinical examination is conducted on all participating children. The oral examination of the 2-7-year group is performed before or after the interview of their parent or caregiver. The clinical examination of the 2–7 year children consists of an examination of the oral mucosa, examination of the teeth for the presence of obvious decay and decalcification (white spots), the presence of plaque on the centrals and molars, when present, and bleeding on probing an inflammation of the gingiva. Oral clinical examinations for children ages 8–17 are performed before or after they have completed the survey. Starting with an examination of the oral mucosa, dental caries are assessed and followed by examination for the presence of plaque, gingivitis and calculus. In addition, the occlusion is assessed as well as orthodontic factors that characterize the position of the teeth,

spacing within the arch and facial profile. Condition on tooth crowding, spaces and jaw relationships, such as overbite and overjet, are also noted. Photographs of the profile of front teeth are taken to assess aesthetics and tooth color.

The assessment of the oral mucosa is based on the format developed by the World Health Organization, which consists of a systematic assessment of the lips, labial mucosa and sulcus, commissures, buccal mucosa and sulcus, gingival and alveolar ridges, floor of the mouth, and hard and soft palate. The caries examination consists of a full mouth examination of all primary and permanent teeth. All of the coronal portions are assessed using the DFT/DMFT index, for the primary and permanent dentition, respectively. The measures included in the exam are also consistent with the Children's Oral Health Status Index [21, 22].

#### **Sample size**

Sample size will be 500 children/adolescents for the field test. The sample will be selected from diverse dental clinics and private practices throughout the Greater Los Angeles Area. With a sample size of 500, the standard error around a correlation is approximately 0.045. A sample size of 500 or more was recommended by Reeve and Fayers (2005) [23] for estimating the item response theory graded response model (2 parameter model).

#### **Field test recruitment**

Four hundred children and adolescents, and their parents will be recruited from community clinics and private practices throughout the Greater Los Angeles Area. These clinics and practices encompass community general clinics, safety-net clinics, group practices, solo general practices, and solo specialty practices with general dentists, pediatric dentists and specialists. These recruitment sites cover different geographic areas and communities, ranging from low-income underserved immigrant neighborhoods to high-income professional communities, with diverse race and ethnic compositions. Institutional review board approval for this study was obtained from the UCLA Office of the Human Research Protection Program.

#### **Phase 4: Psychometric and statistical analysis**

Using data collected from field test, psychometric and statistical analyses will be performed to evaluate oral health items and scales. We will evaluate the reliability and validity of the oral health scales by using item-level factor analytic methods to assess the dimensionality of the oral health scales, and estimate item response theory (IRT) parameters (e.g., threshold,

discrimination). Psychometric evaluations will be completed sequentially using the following steps described in Reeve et al.'s paper [24].

#### Revision and finalization of item banks

Based on the findings from psychometric and statistical analyses, we will make revisions and adjustments to the selected oral health items to finalize the item banks. For example, we may modify the levels of response for some items or drop the items that do not show good psychometric properties (e.g., very low reliability).

#### Results

After comprehensive and systematic literature search on existing oral health items, surveys and instrument relative to children and adolescents, ages 2–17 and their parents, initial core domains for the oral health item banks to be developed are listed in Table 1, which include physical health domains, mental health domains, and social function domains. These initial domains were revised in light of data derived from focus group analysis, cognitive interview, team investigators, experts and analysis.

Table 2 lists domains that are related to oral health. Items related to access, behavior, etc., are critical to oral health, but do not yet fit into the current PROMIS framework.

Table 3 lists the PROMIS self-reported health domains. These results provided valuable information about core domains for the oral health item banks to be developed and generated content for new items and evaluated with cognitive interviews and in a field test.

Through focus groups, we identified three unique themes that the youth associated with their oral health status: (1) understanding the value of maintaining good oral health over the life course, with respect to longevity and quality of life in the adult years; (2) positive association between maintaining good oral health and interpersonal relationships at school, and dating, for older youth; and (3) knowledge of the benefits of orthodontic treatment to appearance and positive self-image, while holding a strong view as to the discomfort associated with braces [25].

We then drafted survey items and revised them based on 66 cognitive interviews (27 children/adolescents and 39 parents) with 39 families. We identified a number of issues from the cognitive interviews that informed subsequent item development. The first issue was guardian involvement in the interview and their reliability as proxies. The second issue was confusing wording of some of the new items created as a result of focus group discussions. The third issue was temporality. Certain items required parents to recall a time when they were

**Table 1** Oral health domains

Domains	Measures
Physical Health	Physical Function
	Pain
	Physical Condition
	Sleep Disturbance/Pain
	Other Symptoms
	School Days Missed
	Sports/Accident/Violence
	Medication Taking
	Physical disability
	Function Limitation
	Oral health symptoms
	Halitosis
	Sensory Problem
	Lips/tongue
	Gums/tissues
	Saliva/Taste
	Natural teeth
	Denture
	Oral cleanliness
	Speech function
Mental Health	Anxiety
	Depression
	Anger
	Cognitive Function
	Negative Impact of Dental/Oral Problems
	Awareness
	Self-Esteem
	Self-Efficacy
	Aesthetics
	Sleep disturbance
Subjective well-being Provided	
Social Function	Social Function
	Social Relationship
	Social Well-being

concerned about a recent oral health problem or indicate any instances of dental anxiety or phobic reactions. We have completed additional cognitive interviews to test comprehensibility of 23 child/adolescent items and 35 parent items, notably those items that we changed through analysis and expert review of the results of original cognitive interviews, and also to test a few revised legacy items derived from the California Health Interview Survey (CHIS) [26, 27].

**Table 2** Oral health related domains

Domains	Measures
Need	Perceived need for dental care
Knowledge	Oral health Knowledge
	Awareness
Health Behavior	Oral hygiene practice
	Smoking
	Alcohol
	Substance abuse
Access	Access to dental/oral health care
	Usual Source of Dental Care
Utilization	Utilization of dental/oral health care
Diet	Diet
Community Level Measures	Community Oral Health Prevention and Intervention
Preventive Dental services	Immunizations, water fluoridation
	Oral health access
	Dental Visits
	Availability of Dentists
Health care delivery	Access, availability of visits
	Process – method by which oral health care is provided
	Outcome – the consequence of the healthcare Provided
	Structure– the environment in which healthcare is provided
Dental Visits	Last dental visits, first dental visits, frequency, type of provider seen.
Dental Insurances	Type of insurance
Dental Expense and Payment Source	Source of payment

## Discussion

Children and adolescents are in the stage of emerging developmental skills and functions. Younger children are already capable of expressing a range of emotions (e.g., anxiety, happiness). However, due to limited level of maturity and responsibilities, children ages 8–17 are not able to answer all questions related to their oral health such as insurance co-pay or other financial questions, for which parents or guardians are the appropriate respondents. Therefore, it is necessary to assess self-reported oral health outcomes for children and adolescents with children surveys supplemented by parent interviews. Furthermore, given the young age of children, oral health outcomes will have profound long-term impacts on their future function and well-being for many years to come, and we need to use life course lens to view the process and impact. Focus groups can serve as an innovative approach to understanding

children's experiences from a developmental perspective through children and parents' involvement.

The National Institute of Health is encouraging use of PROMIS measures in clinical practice and research through the Patient-Centered Assessment Resource: <http://healthcaresdelivery.cancer.gov/resource/>. PROMIS has created an extensive library of item banks, but is still completely lacking oral health item banks. This project capitalized on innovations in modern measurement theory, qualitative methods for instrument development and computerized adaptive testing. In our field testing, we used ACASI approach that has very desirable measurement properties. A research staff is present to instruct the respondent in the use of the laptop computer that administers the questions. The questions are presented both visually on computer screen and audible through earphones so that even respondents with low levels of literacy can take part. ACASI combines the power, flexibility, and standardization of automation with the privacy of self-administration. The audio component of ACASI is particularly effective for participants with low literacy skills. Among the diverse participants and different clinical settings, the majority felt comfortable using the computer, liked the privacy, and faced few difficulties with its use. When they faced difficulties, research staff is present to help solve the technical issues. Weaknesses using ACASI are possible data loss if staff is not properly trained, or the children cannot focus on answering the questions, or the children are cognitively impaired to use the computers. We strived to train research staff and a knowledgeable data manager will be present onsite to troubleshoot so that these issues can be minimized.

Some important future steps are as follows. First, psychometric analyses on the field test data will be performed to construct oral health-targeted items and scales for children and adolescents, ages 2–17. We will use full-information item factor analysis methods [28, 29] to evaluate dimensionality [30–32], calibrate the selected items using the graded response model (GRM) [33], and assess differential item functioning (DIF) using the updated version of Lord's Wald test [34]. Second, we will estimate the minimally important differences (MID) for the new oral health measures using an anchor-based approach [35]. A subset of 150 patients with longitudinal data will be asked to assess changes in their oral health at second data point compared to baseline (e.g., retrospective global oral health rating: *a lot better, a little better, the same, a little worse, or a lot worse*). People who report either getting a "little better" or a "little worse" on oral health will constitute the minimal change subgroup. The change in oral health rating for this group will be used to estimate the MID. The change

**Table 3** Self-reported health domains in PROMIS

Component	Subcomponent	Domain	Sub-domain		
Physical Health	symptoms	Pain	Behavior*		
			Interference		
			Quality*		
			Intensity*		
			Impact		
		Fatigue	Experience		
			Impact		
			Asthma Impact		
		Function	Physical Function	Upper Extremity	
				Lower Extremity	
				Central	
				Activities*	
				Mobility	
				Sexual Function and Satisfaction	Global Satisfaction with Sex Life
					Interest in Sexual Activity
	Lubrication				
	Vaginal Discomfort				
	Erectile Function				
	Orgasm				
	Therapeutic Aids				
	Sexual Activities				
	Sleep Function		Sleep Disturbance		
			Sleep-related Impairment		
			Wake Disturbance		
	Wake Function		Physical Activity	Motor	Balance
		Dexterity			
	Affect	Sensation		Endurance	
				Locomotion	
				Strength	
				Audition	
				Olfaction	
					Pain
					Taste
Vestibular					
Vision					
Anxiety					

**Table 3** Self-reported health domains in PROMIS (Continued)

		Negative (Emotional Distress)	Depression	
Mental Health			Anger	
			Experience of Stress*	
			Psychosocial Illness Impact - Negative	
			Meaning & Spirituality	
			Stress Response	
			Self-concept	
			Social Isolation	
			Emotional and Behavioral Dyscontrol	
			Stigma	
			Fear	
			Sadness	
			Subjective Well-being*	
			Psychosocial Illness Impact - Positive	
			Meaning & Spirituality	
			Coping	
Self-concept				
Social Connection				
Mastery & control (Self-efficacy)				
Subjective Well-being (positive affect) *				
Behavior	Substance Use/Alcohol		Alcohol Use	
			Positive Consequences	
			Positive Expectancies	
			Negative Consequences	
			Negative Expectancies	
	Smoking			Nicotine Dependence
				Perceived Benefits: Affective/Hedonic
				Perceived Benefits: Coping
				Perceived Benefits: Social
				Perceived Benefits: Psychosocial



**Table 3** Self-reported health domains in PROMIS (Continued)

		Perceived Benefits: Health	
Social Health	Cognition	Applied Cognition - General Concerns	General  Self-Efficacy with management of Chronic Disease*
		Applied Cognition - Abilities	
		Applied Cognition – Attention/ Executive Function	
		Self - efficacy	
	Relationships	Episodic memory	Companionship  Emotional Support  Informational Support  Instrumental Support  Social Isolation  Interaction with peers
		Language	
		Processing speed	
		Working memory	
		Social Isolation	
		Quality of Social Support	
		Peer Relationships	
		Family Belongingness*	
		Communication	
		Function	
Satisfaction with Participation in Social Roles and Activities	Social Roles Discretionary Social Activities		

\* Under-development as indicated  
by <http://www.assessmentcenter.net/documents/instrumentlibrary.pdf>

in oral health self-reports will also be examined using clinical anchors of change (e.g. the difference in number of dental caries between baseline and follow-up by dental exams). Third, linking metrics and cross-walk tables will be created to estimate legacy scores from oral health domains and vice versa, and provide confidence interval around these estimates. Appropriate equity criteria such as the equipercentile equating procedure will be implemented to determine the linking method. Using the information in the item bank library, users will be able to create computerized adaptive tests or short forms tailored

to their populations of interest or aspects of oral health (e.g., dental caries issue) of interest. Scores on these tailored measures can then be compared because the items have been mapped onto a common metric.

This study has several limitations. First, our study sample may not be representative of the U.S. general population in that it is comprised of children who are already under dental care and agreed to participate in this project. Second, there are many decisions involved in the evaluation and refinement of item banks. These decisions require extensive skill and experience and are inherently subjective, but the experience of our team will provide a system of checks and balances. Additionally, we will minimize the likelihood of bad decisions by performing a comprehensive set of psychometric and statistical analyses and balance empirical results with clinical input. We are aware of issues that arise when health-related constructs are fit to IRT models (e.g., extreme threshold parameters, very large discrimination parameters, and highly skewed information curves), and will test alternative models in order to find the best fit.

## Conclusions

This project utilizes qualitative and state-of-the-science quantitative methods to develop oral health PROs for children and adolescents. The qualitative methods used in the initial phases of the project (focus group and cognitive interviews) are the initial steps in the development of oral health item banks and associated short-form surveys for children and adolescents. The oral health items can potentially be used to create effective computerized adaptive test and/or create ad hoc short forms targeting specific areas of oral health to survey large populations of children with much less cost compared with traditional clinical oral health examination. These surveys can be used by dentists, oral health researchers and professionals, and public policy makers for oral health screening, program assessment, oral health evaluation with large populations as well as oral health management and policy planning.

## Abbreviations

ACASI: Audio computer-assisted self-interview software; COHIP: Child oral health impact profile; C-OIDP: Child oral impacts on daily performances index; CPQ: Child perceptions questionnaire; DIF: Differential item functioning; GRM: Graded response model; IRT: Item response theory; MID: Minimally important differences; PedsQL™: Pediatric Quality of Life Inventory™; PRO: Patient-reported outcomes; PROMIS: Patient-reported outcomes measurement information system

## Acknowledgements

We thank the families for their participation in the study and contributing to the enhancement of oral health item back development. We also thank the field staff of the data collection and coordination sites. This research was supported by a NIDCR/NIH grant to the University of California, Los Angeles (UCLA) (U01DE022648).

**Availability of data and materials**

The datasets analysed during the current study are available from the corresponding author on reasonable request.

**Authors' contributions**

HHL and JS drafted the manuscript. RDH MM IC CM FRG JS YW VS LC JC made substantial contributions to conception and design of the study and acquisition and analysis and interpretation of the data, were involved in revising the manuscript. SL made contributions to acquisition and analysis and interpretation of the data. All authors gave final approval for publication.

**Competing interests**

The authors declare that they have no competing interests.

**Consent for publication**

Not applicable.

**Ethics approval and consent to participate**

To participate in the study, each family member will provide active consent, as approved by the University of California Los Angeles Institutional Review Board (approval # 13-001330). All children gave consent to participate in the study. Moreover, each of their parents or guardians signed an informed consent form.

**Author details**

<sup>1</sup>Division of Public Health & Community Dentistry, School of Dentistry, University of California, Los Angeles (UCLA), Los Angeles, CA, USA. <sup>2</sup>UCLA Department of Medicine, David Geffen School of Medicine, Los Angeles, CA, USA. <sup>3</sup>UCLA Section of Pediatric Dentistry, Los Angeles, CA, USA. <sup>4</sup>UCLA Department of Biostatistics, Los Angeles, CA, USA. <sup>5</sup>UCLA Section of Restorative Dentistry, Los Angeles, CA, USA. <sup>6</sup>UCLA Department of Education, School of Education and Information Studies, Los Angeles, CA, USA.

Received: 7 January 2016 Accepted: 8 September 2016

Published online: 15 September 2016

**References**

- Dye BA, Thornton-Evans G. Trends in oral health by poverty status as measured by Healthy People 2010 objectives. *Public Health Rep.* 2010;125: 817–30.
- Oral health in America: a report of the Surgeon General. *J Calif Dent Assoc.* 2000;28:685–95.
- Romer M, Dougherty N, Amores-Lafleur E. Predoctoral education in special care dentistry: paving the way to better access? *ASDC J Dent Child.* 2007;66:132–5.
- Barbosa TS, Gavião MBD. Oral health-related quality of life in children: Part I. How well do children know themselves? A systematic review. *Int J Dent Hyg.* 2008;6:93–9.
- Waldman HB, Perlman SP. Dental needs assessment and access to care for adolescents. *Dent Clin North Am.* 2006;50:1–16.
- Walsh TR, Irwin DE, Meier A, Varni JW, DeWalt DA. The use of focus groups in the development of the PROMIS pediatrics item bank. *Qual Life Res.* 2008;17:725–35.
- Varni JW, Seid M, Rode CA. The PedsQL (TM): Measurement model for the pediatric quality of life inventory. *Med Care.* 1999;37:126.
- Matza LS, Patrick DL, Riley AW, Alexander JJ, Rajmil L, Pleil AM, et al. Pediatric patient-reported outcome instruments for research to support medical product labeling: report of the ISPOR PRO good research practices for the assessment of children and adolescents task force. *Value Health.* 2013;16:461–79.
- Irwin DE, Varni JW, Yeatts K, DeWalt DA. Cognitive interviewing methodology in the development of a pediatric item bank: a patient reported outcomes measurement information system (PROMIS) study. *Health Qual Life Outcomes.* 2009;7:1–10.
- Tsakos G, Blair YI, Yusuf H, Wright W, Watt RG, Macpherson LMD. Developing a new self-reported scale of oral health outcomes for 5-year-old children (SOHO-5). *Health Qual Life Outcomes.* 2012;10:62.
- Irwin DE, Gross HE, Stucky BD, Thissen D, DeWitt EM, Lai JS, et al. Development of six PROMIS pediatrics proxy-report item banks. *Health Qual Life Outcomes.* 2012;10:22.
- Cella D, Yount S, Rothrock N, Gershon R, Cook K, Reeve B, et al. The Patient-Reported Outcomes Measurement Information System (PROMIS): progress of an NIH Roadmap cooperative group during its first two years. *Med Care.* 2007;45:53.
- Jokovic A, Locker D, Tompson B, Guyatt G. Questionnaire for measuring oral health-related quality of life in eight- to ten-year-old children. *Pediatr Dent.* 2004;26:512–8.
- Jokovic A, Locker D, Stephens M, Kenny D, Tompson B, Guyatt G. Validity and reliability of a questionnaire for measuring child oral-health-related quality of life. *J Dent Res.* 2002;81:459–63.
- Jokovic A, Locker D, Guyatt G. Short forms of the Child Perceptions Questionnaire for 11-14-year-old children (CPQ11-14): development and initial evaluation. *Health Qual Life Outcomes.* 2006;4:4.
- Gherunpong S, Tsakos G, Sheiham A. Developing and evaluating an oral health-related quality of life index for children; the CHILD-OIDP. *Community Dent Health.* 2004;21:161–9.
- Broder HL, McGrath C, Cisneros GJ. Questionnaire development: face validity and item impact testing of the Child Oral Health Impact Profile. *Community Dent Oral Epidemiol.* 2007;35 Suppl 1:8–19.
- Fisher-Owens SA, Gansky SA, Platt LJ, Weintraub JA, Soobader M-J, Bramlett MD, et al. Influences on children's oral health: a conceptual model. *Pediatrics.* 2007;120:e510–520.
- Osler M. The life course perspective: a challenge for public health research and prevention. *Eur J Public Health.* 2006;16:230.
- Christodoulou C, Junghaenel DU, DeWalt DA, Rothrock N, Stone AA. Cognitive interviewing in the evaluation of fatigue items: results from the patient-reported outcomes measurement information system (PROMIS). *Qual Life Res.* 2008;17:1239–46.
- Koch AL, Gershen JA, Marcus M. A children's oral health status index based on dentists' judgment. *J Am Dent Assoc.* 1985;110:36–42.
- Gershen JA, Marcus M, Koch A. Using dentists' judgments to identify the components of children's oral health. *ASDC J Dent Child.* 1980;47:419–24.
- Reeve BB, Fayers P. Applying item response theory modeling for evaluating questionnaire item and scale properties. *Assess. Qual. Life Clin. Trials Methods Pract.* 2005;2:55–73.
- Reeve BB, Hays RD, Bjorner JB, Cook KF, Crane PK, Teresi JA, et al. Psychometric evaluation and calibration of health-related quality of life item banks: plans for the Patient-Reported Outcomes Measurement Information System (PROMIS). *Med Care.* 2007;45:522.
- Maida CA, Marcus M, Hays RD, Coulter ID, Ramos-Gomez F, Lee SY, et al. Child and adolescent perceptions of oral health over the life course. *Qual Life Res.* 2015;24:2739–51.
- CHS 2011–2012 Child Questionnaire Version 12. 5 [Internet]. Available from: <http://healthpolicy.ucla.edu/chis/design/Documents/CHS2011childquestionnaire.pdf>. Accessed 2 Sept 2016.
- CHS 2011–2012 Adolescent Questionnaire Version 15. 3 [Internet]. Available from: <http://healthpolicy.ucla.edu/chis/design/Documents/CHS2011teenquestionnaire.pdf>. Accessed 2 Sept 2016.
- Cai L, Du Toit SHC, Thissen D. IRTPRO: Flexible, multidimensional, multiple categorical IRT modeling [Computer software]. Chicago: Scientific Software International; 2011.
- Cai L, Thissen D, du Toit SHC. IRTPRO for Windows [Computer software]. Lincolnwood: Scientific Software International; 2011.
- Cai L. A two-tier full-information item factor analysis model with applications. *Psychometrika.* 2010;75:581–612.
- Cai L. Metropolis-Hastings Robbins-Monro algorithm for confirmatory item factor analysis. *J Educ Behav Stat.* 2010;35:307–35.
- Cai L. High-dimensional exploratory item factor analysis by a Metropolis-Hastings Robbins-Monro algorithm. *Psychometrika.* 2010;75:33–57.
- Samejima F. Estimation of latent ability using a response pattern of graded scores. *Psychometrika.* 1969;34:1–97.
- Langer MM. A reexamination of Lord's Wald test for differential item functioning using item response theory and modern error estimation. Chapel Hill: The University of North Carolina; 2009.
- Hays RD, Farivar SS, Liu H. Approaches and recommendations for estimating minimally important differences for health-related quality of life measures. *COPD J Chronic Obstr Pulm Dis.* 2005;2:63–7.